



# Full wwPDB X-ray Structure Validation Report ⓘ

May 26, 2020 – 06:51 am BST

PDB ID : 4CGF  
Title : Interrogating HIV integrase for compounds that bind- a SAMPL challenge  
Authors : Peat, T.S.  
Deposited on : 2013-11-23  
Resolution : 1.70 Å(reported)

This is a Full wwPDB X-ray Structure Validation Report for a publicly released PDB entry.

We welcome your comments at [validation@mail.wwpdb.org](mailto:validation@mail.wwpdb.org)

A user guide is available at

<https://www.wwpdb.org/validation/2017/XrayValidationReportHelp>

with specific help available everywhere you see the ⓘ symbol.

---

The following versions of software and data (see [references ⓘ](#)) were used in the production of this report:

MolProbity : 4.02b-467  
Mogul : 1.8.5 (274361), CSD as541be (2020)  
Xtriage (Phenix) : 1.13  
EDS : 2.11  
buster-report : 1.1.7 (2018)  
Percentile statistics : 20191225.v01 (using entries in the PDB archive December 25th 2019)  
Refmac : 5.8.0158  
CCP4 : 7.0.044 (Gargrove)  
Ideal geometry (proteins) : Engh & Huber (2001)  
Ideal geometry (DNA, RNA) : Parkinson et al. (1996)  
Validation Pipeline (wwPDB-VP) : 2.11

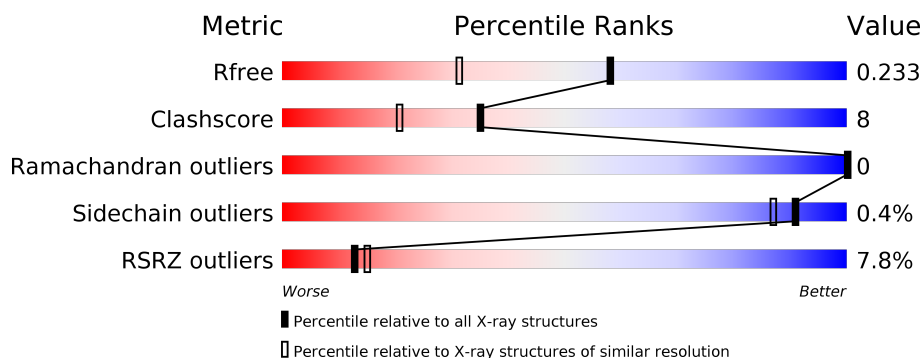
# 1 Overall quality at a glance

The following experimental techniques were used to determine the structure:

## *X-RAY DIFFRACTION*

The reported resolution of this entry is 1.70 Å.

Percentile scores (ranging between 0-100) for global validation metrics of the entry are shown in the following graphic. The table shows the number of entries on which the scores are based.



Metric	Whole archive (#Entries)	Similar resolution (#Entries, resolution range(Å))
$R_{free}$	130704	4298 (1.70-1.70)
Clashscore	141614	4695 (1.70-1.70)
Ramachandran outliers	138981	4610 (1.70-1.70)
Sidechain outliers	138945	4610 (1.70-1.70)
RSRZ outliers	127900	4222 (1.70-1.70)

The table below summarises the geometric issues observed across the polymeric chains and their fit to the electron density. The red, orange, yellow and green segments on the lower bar indicate the fraction of residues that contain outliers for  $\geq 3$ , 2, 1 and 0 types of geometric quality criteria respectively. A grey segment represents the fraction of residues that are not modelled. The numeric value for each fraction is indicated below the corresponding segment, with a dot representing fractions  $\leq 5\%$ . The upper red bar (where present) indicates the fraction of residues that have poor fit to the electron density. The numeric value is given above the bar.

Mol	Chain	Length	Quality of chain
1	A	183	
1	B	183	

The following table lists non-polymeric compounds, carbohydrate monomers and non-standard residues in protein, DNA, RNA chains that are outliers for geometric or electron-density-fit criteria:

Mol	Type	Chain	Res	Chirality	Geometry	Clashes	Electron density
3	ACT	B	1213	-	-	X	-
3	ACT	B	1214	-	-	X	-
3	ACT	B	1215	-	-	X	-
3	ACT	B	1216	-	-	X	-
4	EDO	B	1218	-	-	X	-

## 2 Entry composition

There are 6 unique types of molecules in this entry. The entry contains 2700 atoms, of which 0 are hydrogens and 0 are deuteriums.

In the tables below, the ZeroOcc column contains the number of atoms modelled with zero occupancy, the AltConf column contains the number of residues with at least one atom in alternate conformation and the Trace column contains the number of residues modelled with at most 2 atoms.

- Molecule 1 is a protein called INTEGRASE.

Mol	Chain	Residues	Atoms					ZeroOcc	AltConf	Trace
1	A	148	Total	C	N	O	S	0	9	0
			1201	774	204	219	4			
1	B	148	Total	C	N	O	S	0	14	0
			1231	797	210	220	4			

There are 46 discrepancies between the modelled and reference sequences:

Chain	Residue	Modelled	Actual	Comment	Reference
A	30	MET	-	expression tag	UNP Q76353
A	31	GLY	-	expression tag	UNP Q76353
A	32	SER	-	expression tag	UNP Q76353
A	33	SER	-	expression tag	UNP Q76353
A	34	HIS	-	expression tag	UNP Q76353
A	35	HIS	-	expression tag	UNP Q76353
A	36	HIS	-	expression tag	UNP Q76353
A	37	HIS	-	expression tag	UNP Q76353
A	38	HIS	-	expression tag	UNP Q76353
A	39	HIS	-	expression tag	UNP Q76353
A	40	SER	-	expression tag	UNP Q76353
A	41	SER	-	expression tag	UNP Q76353
A	42	GLY	-	expression tag	UNP Q76353
A	43	LEU	-	expression tag	UNP Q76353
A	44	VAL	-	expression tag	UNP Q76353
A	45	PRO	-	expression tag	UNP Q76353
A	46	ARG	-	expression tag	UNP Q76353
A	47	GLY	-	expression tag	UNP Q76353
A	48	SER	-	expression tag	UNP Q76353
A	49	HIS	-	expression tag	UNP Q76353
A	56	SER	CYS	engineered mutation	UNP Q76353
A	139	ASP	PHE	engineered mutation	UNP Q76353
A	185	HIS	PHE	engineered mutation	UNP Q76353
B	30	MET	-	expression tag	UNP Q76353
B	31	GLY	-	expression tag	UNP Q76353

*Continued on next page...*

Continued from previous page...

Chain	Residue	Modelled	Actual	Comment	Reference
B	32	SER	-	expression tag	UNP Q76353
B	33	SER	-	expression tag	UNP Q76353
B	34	HIS	-	expression tag	UNP Q76353
B	35	HIS	-	expression tag	UNP Q76353
B	36	HIS	-	expression tag	UNP Q76353
B	37	HIS	-	expression tag	UNP Q76353
B	38	HIS	-	expression tag	UNP Q76353
B	39	HIS	-	expression tag	UNP Q76353
B	40	SER	-	expression tag	UNP Q76353
B	41	SER	-	expression tag	UNP Q76353
B	42	GLY	-	expression tag	UNP Q76353
B	43	LEU	-	expression tag	UNP Q76353
B	44	VAL	-	expression tag	UNP Q76353
B	45	PRO	-	expression tag	UNP Q76353
B	46	ARG	-	expression tag	UNP Q76353
B	47	GLY	-	expression tag	UNP Q76353
B	48	SER	-	expression tag	UNP Q76353
B	49	HIS	-	expression tag	UNP Q76353
B	56	SER	CYS	engineered mutation	UNP Q76353
B	139	ASP	PHE	engineered mutation	UNP Q76353
B	185	HIS	PHE	engineered mutation	UNP Q76353

- Molecule 2 is SULFATE ION (three-letter code: SO4) (formula: O<sub>4</sub>S).



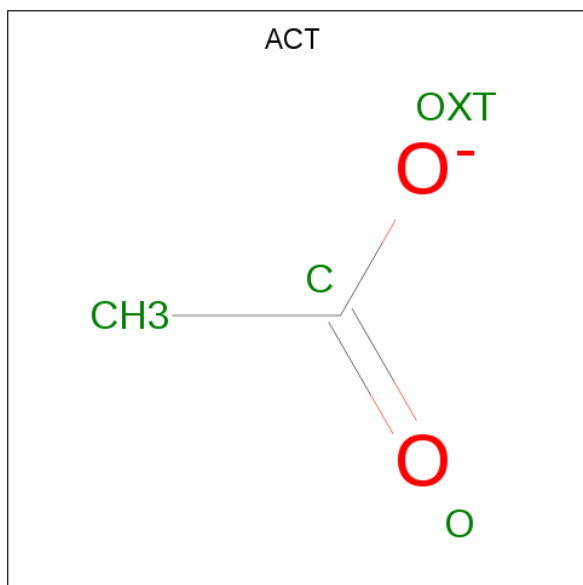
Mol	Chain	Residues	Atoms			ZeroOcc	AltConf
2	A	1	Total	O	S	0	0
			5	4	1		

Continued on next page...

Continued from previous page...

Mol	Chain	Residues	Atoms			ZeroOcc	AltConf
2	A	1	Total	O	S	0	0
			5	4	1		
2	B	1	Total	O	S	0	0
			5	4	1		
2	B	1	Total	O	S	0	0
			5	4	1		

- Molecule 3 is ACETATE ION (three-letter code: ACT) (formula: C<sub>2</sub>H<sub>3</sub>O<sub>2</sub>).



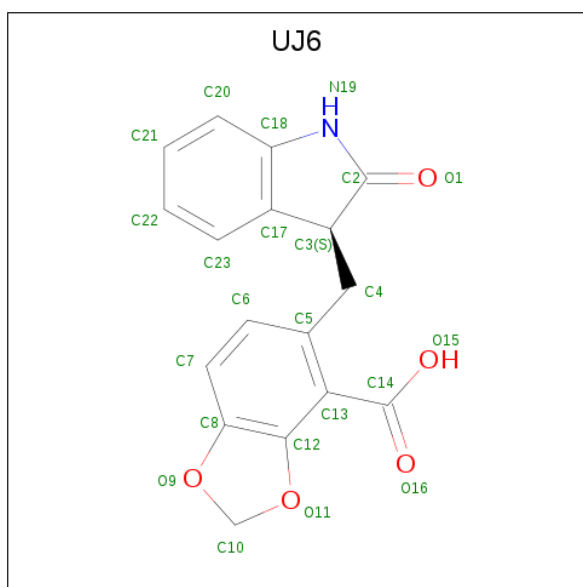
Mol	Chain	Residues	Atoms			ZeroOcc	AltConf
3	A	1	Total	C	O	0	0
			4	2	2		
3	A	1	Total	C	O	0	0
			4	2	2		
3	A	1	Total	C	O	0	0
			4	2	2		
3	B	1	Total	C	O	0	0
			4	2	2		
3	B	1	Total	C	O	0	0
			4	2	2		
3	B	1	Total	C	O	0	0
			4	2	2		
3	B	1	Total	C	O	0	0
			4	2	2		

- Molecule 4 is 1,2-ETHANEDIOL (three-letter code: EDO) (formula:  $C_2H_6O_2$ ).



Mol	Chain	Residues	Atoms			ZeroOcc	AltConf
4	A	1	Total	C	O	0	0
			4	2	2		
4	B	1	Total	C	O	0	0
			4	2	2		
4	B	1	Total	C	O	0	0
			4	2	2		

- Molecule 5 is 5-[[[(3S)-2-oxo-2,3-dihydro-1H-indol-3-yl]methyl]-1,3-benzodioxole-4-carboxylic acid (three-letter code: UJ6) (formula:  $C_{17}H_{13}NO_5$ ).



Mol	Chain	Residues	Atoms				ZeroOcc	AltConf
5	A	1	Total	C	N	O	0	0
			23	17	1	5		
5	B	1	Total	C	N	O	0	0
			23	17	1	5		

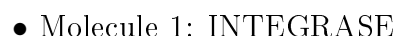
- Molecule 6 is water.

Mol	Chain	Residues	Atoms		ZeroOcc	AltConf
6	A	87	Total	O	0	0
			87	87		
6	B	71	Total	O	0	0
			71	71		





- Molecule 1: INTEGRASE



## 4 Data and refinement statistics

Property	Value	Source
Space group	P 31	Depositor
Cell constants a, b, c, $\alpha$ , $\beta$ , $\gamma$	71.63 Å 71.63 Å 67.13 Å 90.00° 90.00° 120.00°	Depositor
Resolution (Å)	35.84 – 1.70 35.82 – 1.70	Depositor EDS
% Data completeness (in resolution range)	96.2 (35.84-1.70) 96.2 (35.82-1.70)	Depositor EDS
$R_{merge}$	0.06	Depositor
$R_{sym}$	(Not available)	Depositor
$\langle I/\sigma(I) \rangle$ <sup>1</sup>	2.17 (at 1.70 Å)	Xtriage
Refinement program	REFMAC 5.7.0032	Depositor
R, $R_{free}$	0.208 , 0.230 0.213 , 0.233	Depositor DCC
$R_{free}$ test set	2049 reflections (5.03%)	wwPDB-VP
Wilson B-factor (Å <sup>2</sup> )	21.2	Xtriage
Anisotropy	0.025	Xtriage
Bulk solvent $k_{sol}$ (e/Å <sup>3</sup> ), $B_{sol}$ (Å <sup>2</sup> )	0.35 , 28.5	EDS
L-test for twinning <sup>2</sup>	$\langle  L  \rangle = 0.49$ , $\langle L^2 \rangle = 0.33$	Xtriage
Estimated twinning fraction	0.027 for -h,-k,l 0.488 for h,-h-k,-l 0.028 for -k,-h,-l	Xtriage
$F_o, F_c$ correlation	0.95	EDS
Total number of atoms	2700	wwPDB-VP
Average B, all atoms (Å <sup>2</sup> )	26.0	wwPDB-VP

Xtriage's analysis on translational NCS is as follows: *The largest off-origin peak in the Patterson function is 7.79% of the height of the origin peak. No significant pseudotranslation is detected.*

<sup>1</sup>Intensities estimated from amplitudes.

<sup>2</sup>Theoretical values of  $\langle |L| \rangle$ ,  $\langle L^2 \rangle$  for acentric reflections are 0.5, 0.333 respectively for untwinned datasets, and 0.375, 0.2 for perfectly twinned datasets.

## 5 Model quality ⓘ

### 5.1 Standard geometry ⓘ

Bond lengths and bond angles in the following residue types are not validated in this section: UJ6, ACT, EDO, SO4

The Z score for a bond length (or angle) is the number of standard deviations the observed value is removed from the expected value. A bond length (or angle) with  $|Z| > 5$  is considered an outlier worth inspection. RMSZ is the root-mean-square of all Z scores of the bond lengths (or angles).

Mol	Chain	Bond lengths		Bond angles	
		RMSZ	# Z  >5	RMSZ	# Z  >5
1	A	0.32	0/1252	0.52	0/1697
1	B	0.32	0/1299	0.51	0/1760
All	All	0.32	0/2551	0.52	0/3457

There are no bond length outliers.

There are no bond angle outliers.

There are no chirality outliers.

There are no planarity outliers.

### 5.2 Too-close contacts ⓘ

In the following table, the Non-H and H(model) columns list the number of non-hydrogen atoms and hydrogen atoms in the chain respectively. The H(added) column lists the number of hydrogen atoms added and optimized by MolProbity. The Clashes column lists the number of clashes within the asymmetric unit, whereas Symm-Clashes lists symmetry related clashes.

Mol	Chain	Non-H	H(model)	H(added)	Clashes	Symm-Clashes
1	A	1201	0	1241	12	0
1	B	1231	0	1285	21	0
2	A	10	0	0	0	0
2	B	10	0	0	0	0
3	A	12	0	9	1	0
3	B	20	0	15	16	0
4	A	4	0	6	0	0
4	B	8	0	12	7	0
5	A	23	0	12	0	0
5	B	23	0	12	0	0
6	A	87	0	0	1	0

*Continued on next page...*

*Continued from previous page...*

Mol	Chain	Non-H	H(model)	H(added)	Clashes	Symm-Clashes
6	B	71	0	0	1	0
All	All	2700	0	2592	42	0

The all-atom clashscore is defined as the number of clashes found per 1000 atoms (including hydrogen atoms). The all-atom clashscore for this structure is 8.

All (42) close contacts within the same asymmetric unit are listed below, sorted by their clash magnitude.

Atom-1	Atom-2	Interatomic distance (Å)	Clash overlap (Å)
1:B:72[B]:VAL:HG13	1:B:89:ILE:HG13	1.68	0.75
1:B:77[B]:VAL:HG12	1:B:84:ILE:HG22	1.69	0.74
1:B:197:GLY:O	4:B:1218:EDO:H22	1.94	0.67
1:B:87[B]:GLU:OE1	3:B:1216:ACT:OXT	2.15	0.64
1:A:109:PRO:HD3	4:B:1218:EDO:C1	2.28	0.64
6:A:2069:HOH:O	3:B:1215:ACT:H2	2.00	0.62
3:B:1216:ACT:H2	6:B:2056:HOH:O	2.00	0.62
3:B:1215:ACT:H3	3:B:1216:ACT:H3	1.86	0.57
1:B:72[B]:VAL:CG1	1:B:89:ILE:HG13	2.34	0.57
3:B:1215:ACT:C	3:B:1216:ACT:H3	2.36	0.56
1:A:87[B]:GLU:OE1	3:B:1215:ACT:OXT	2.24	0.56
1:B:65:CYS:SG	1:B:72[B]:VAL:HG21	2.46	0.56
1:A:109:PRO:HD3	4:B:1218:EDO:H11	1.88	0.56
1:B:181:PHE:O	1:B:185[B]:HIS:HD2	1.90	0.54
1:A:87[B]:GLU:OE2	1:B:103[B]:LYS:NZ	2.37	0.54
3:B:1215:ACT:H3	3:B:1216:ACT:C	2.38	0.54
3:B:1215:ACT:O	3:B:1216:ACT:H3	2.08	0.54
1:B:77[B]:VAL:HG11	1:B:154:MET:SD	2.48	0.53
1:B:62[B]:GLN:HB3	1:B:77[B]:VAL:CG2	2.40	0.52
1:B:185[B]:HIS:CE1	3:B:1214:ACT:H3	2.46	0.51
1:B:65:CYS:SG	1:B:72[B]:VAL:CG2	3.00	0.50
1:A:103[B]:LYS:NZ	1:B:87[B]:GLU:OE2	2.43	0.49
3:B:1215:ACT:H3	3:B:1216:ACT:O	2.13	0.48
1:A:109:PRO:HD3	4:B:1218:EDO:H12	1.96	0.47
3:B:1215:ACT:CH3	3:B:1216:ACT:H3	2.45	0.47
1:A:205:ALA:O	1:A:209:GLN:HG2	2.14	0.47
3:B:1214:ACT:H2	4:B:1218:EDO:O2	2.14	0.46
3:B:1215:ACT:H3	3:B:1216:ACT:CH3	2.47	0.45
3:B:1213:ACT:H1	4:B:1217:EDO:H21	1.99	0.44
1:A:103[B]:LYS:HE3	1:B:87[B]:GLU:OE2	2.17	0.43
1:B:72[B]:VAL:HG13	1:B:89:ILE:CG1	2.41	0.43
1:A:100:PHE:CE1	3:A:1212:ACT:H1	2.54	0.43

*Continued on next page...*

*Continued from previous page...*

Atom-1	Atom-2	Interatomic distance (Å)	Clash overlap (Å)
1:B:99:TYR:CE2	1:B:103[B]:LYS:HD2	2.53	0.43
1:B:181:PHE:O	1:B:185[B]:HIS:CD2	2.71	0.42
1:A:200:ILE:HG12	1:A:204:ILE:HD12	2.01	0.41
1:B:62[B]:GLN:HB3	1:B:77[B]:VAL:HG23	2.01	0.41
1:B:63[B]:LEU:HD21	1:B:97:THR:HG23	2.02	0.41
1:A:103[A]:LYS:NZ	3:B:1216:ACT:H1	2.35	0.41
1:B:200:ILE:HG12	1:B:204:ILE:HD12	2.02	0.41
1:A:169:ALA:HB1	1:A:174:THR:HB	2.04	0.40
3:B:1213:ACT:CH3	4:B:1217:EDO:H21	2.51	0.40
1:B:169:ALA:HB1	1:B:174:THR:HB	2.04	0.40

There are no symmetry-related clashes.

## 5.3 Torsion angles [i](#)

### 5.3.1 Protein backbone [i](#)

In the following table, the Percentiles column shows the percent Ramachandran outliers of the chain as a percentile score with respect to all X-ray entries followed by that with respect to entries of similar resolution.

The Analysed column shows the number of residues for which the backbone conformation was analysed, and the total number of residues.

Mol	Chain	Analysed	Favoured	Allowed	Outliers	Percentiles	
1	A	153/183 (84%)	152 (99%)	1 (1%)	0	100	100
1	B	158/183 (86%)	157 (99%)	1 (1%)	0	100	100
All	All	311/366 (85%)	309 (99%)	2 (1%)	0	100	100

There are no Ramachandran outliers to report.

### 5.3.2 Protein sidechains [i](#)

In the following table, the Percentiles column shows the percent sidechain outliers of the chain as a percentile score with respect to all X-ray entries followed by that with respect to entries of similar resolution.

The Analysed column shows the number of residues for which the sidechain conformation was analysed, and the total number of residues.

Mol	Chain	Analysed	Rotameric	Outliers	Percentiles	
1	A	132/150 (88%)	131 (99%)	1 (1%)	81	74
1	B	137/150 (91%)	137 (100%)	0	100	100
All	All	269/300 (90%)	268 (100%)	1 (0%)	91	87

All (1) residues with a non-rotameric sidechain are listed below:

Mol	Chain	Res	Type
1	A	95	GLN

Some sidechains can be flipped to improve hydrogen bonding and reduce clashes. All (3) such sidechains are listed below:

Mol	Chain	Res	Type
1	A	155	ASN
1	B	148	GLN
1	B	155	ASN

### 5.3.3 RNA ⓘ

There are no RNA molecules in this entry.

## 5.4 Non-standard residues in protein, DNA, RNA chains ⓘ

There are no non-standard protein/DNA/RNA residues in this entry.

## 5.5 Carbohydrates ⓘ

There are no carbohydrates in this entry.

## 5.6 Ligand geometry ⓘ

17 ligands are modelled in this entry.

In the following table, the Counts columns list the number of bonds (or angles) for which Mogul statistics could be retrieved, the number of bonds (or angles) that are observed in the model and the number of bonds (or angles) that are defined in the Chemical Component Dictionary. The Link column lists molecule types, if any, to which the group is linked. The Z score for a bond length (or angle) is the number of standard deviations the observed value is removed from the expected value. A bond length (or angle) with  $|Z| > 2$  is considered an outlier worth inspection. RMSZ is the root-mean-square of all Z scores of the bond lengths (or angles).

Mol	Type	Chain	Res	Link	Bond lengths			Bond angles		
					Counts	RMSZ	# Z  > 2	Counts	RMSZ	# Z  > 2
2	SO4	A	1211	-	4,4,4	0.31	0	6,6,6	0.18	0
3	ACT	A	1213	-	1,3,3	0.84	0	0,3,3	0.00	-
3	ACT	B	1215	-	1,3,3	0.87	0	0,3,3	0.00	-
3	ACT	B	1212	-	1,3,3	1.92	0	0,3,3	0.00	-
2	SO4	B	1210	-	4,4,4	0.29	0	6,6,6	0.17	0
3	ACT	A	1212	-	1,3,3	1.84	0	0,3,3	0.00	-
4	EDO	A	1215	-	3,3,3	0.52	0	2,2,2	0.19	0
3	ACT	B	1216	-	1,3,3	0.71	0	0,3,3	0.00	-
4	EDO	B	1217	-	3,3,3	0.41	0	2,2,2	0.17	0
5	UJ6	A	1216	-	23,26,26	1.36	3 (13%)	30,38,38	1.92	7 (23%)
2	SO4	B	1211	-	4,4,4	0.27	0	6,6,6	0.20	0
5	UJ6	B	1219	-	23,26,26	1.35	3 (13%)	30,38,38	1.93	7 (23%)
2	SO4	A	1210	-	4,4,4	0.29	0	6,6,6	0.15	0
4	EDO	B	1218	-	3,3,3	0.49	0	2,2,2	0.44	0
3	ACT	A	1214	-	1,3,3	1.10	0	0,3,3	0.00	-
3	ACT	B	1214	-	1,3,3	0.95	0	0,3,3	0.00	-
3	ACT	B	1213	-	1,3,3	1.13	0	0,3,3	0.00	-

In the following table, the Chirals column lists the number of chiral outliers, the number of chiral centers analysed, the number of these observed in the model and the number defined in the Chemical Component Dictionary. Similar counts are reported in the Torsion and Rings columns. '-' means no outliers of that kind were identified.

Mol	Type	Chain	Res	Link	Chirals	Torsions	Rings
5	UJ6	B	1219	-	-	0/4/26/26	0/4/4/4
4	EDO	A	1215	-	-	1/1/1/1	-
5	UJ6	A	1216	-	-	0/4/26/26	0/4/4/4
4	EDO	B	1218	-	-	1/1/1/1	-
4	EDO	B	1217	-	-	1/1/1/1	-

All (6) bond length outliers are listed below:

Mol	Chain	Res	Type	Atoms	Z	Observed(Å)	Ideal(Å)
5	A	1216	UJ6	C2-N19	3.65	1.38	1.35
5	B	1219	UJ6	C2-N19	3.56	1.38	1.35
5	A	1216	UJ6	C18-C17	-3.48	1.36	1.39
5	B	1219	UJ6	C18-C17	-3.48	1.36	1.39
5	B	1219	UJ6	C13-C14	2.41	1.49	1.47
5	A	1216	UJ6	C13-C14	2.29	1.49	1.47

All (14) bond angle outliers are listed below:

Mol	Chain	Res	Type	Atoms	Z	Observed(°)	Ideal(°)
5	A	1216	UJ6	C10-O9-C8	-4.39	99.64	105.34
5	B	1219	UJ6	C10-O9-C8	-4.34	99.71	105.34
5	B	1219	UJ6	C17-C3-C2	-4.03	101.05	102.40
5	A	1216	UJ6	C18-N19-C2	-3.83	109.76	111.85
5	B	1219	UJ6	C10-O11-C12	-3.76	100.35	105.04
5	A	1216	UJ6	O9-C8-C12	3.71	113.05	109.63
5	A	1216	UJ6	C10-O11-C12	-3.69	100.44	105.04
5	B	1219	UJ6	C18-N19-C2	-3.52	109.93	111.85
5	B	1219	UJ6	O9-C8-C12	3.46	112.82	109.63
5	B	1219	UJ6	O11-C10-O9	3.15	113.11	108.08
5	A	1216	UJ6	C17-C3-C2	-3.11	101.36	102.40
5	A	1216	UJ6	O11-C10-O9	3.06	112.97	108.08
5	A	1216	UJ6	C4-C5-C6	-2.57	114.94	119.71
5	B	1219	UJ6	C4-C5-C6	-2.36	115.32	119.71

There are no chirality outliers.

All (3) torsion outliers are listed below:

Mol	Chain	Res	Type	Atoms
4	A	1215	EDO	O1-C1-C2-O2
4	B	1217	EDO	O1-C1-C2-O2
4	B	1218	EDO	O1-C1-C2-O2

There are no ring outliers.

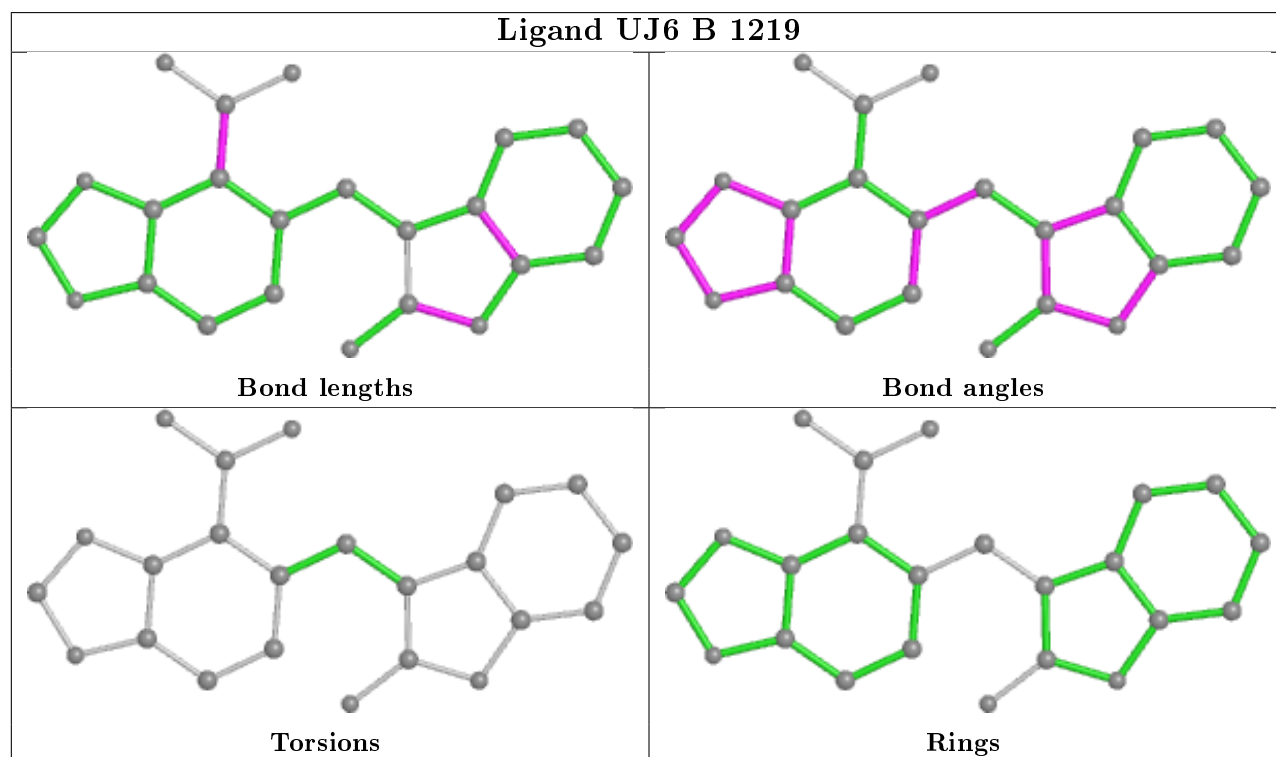
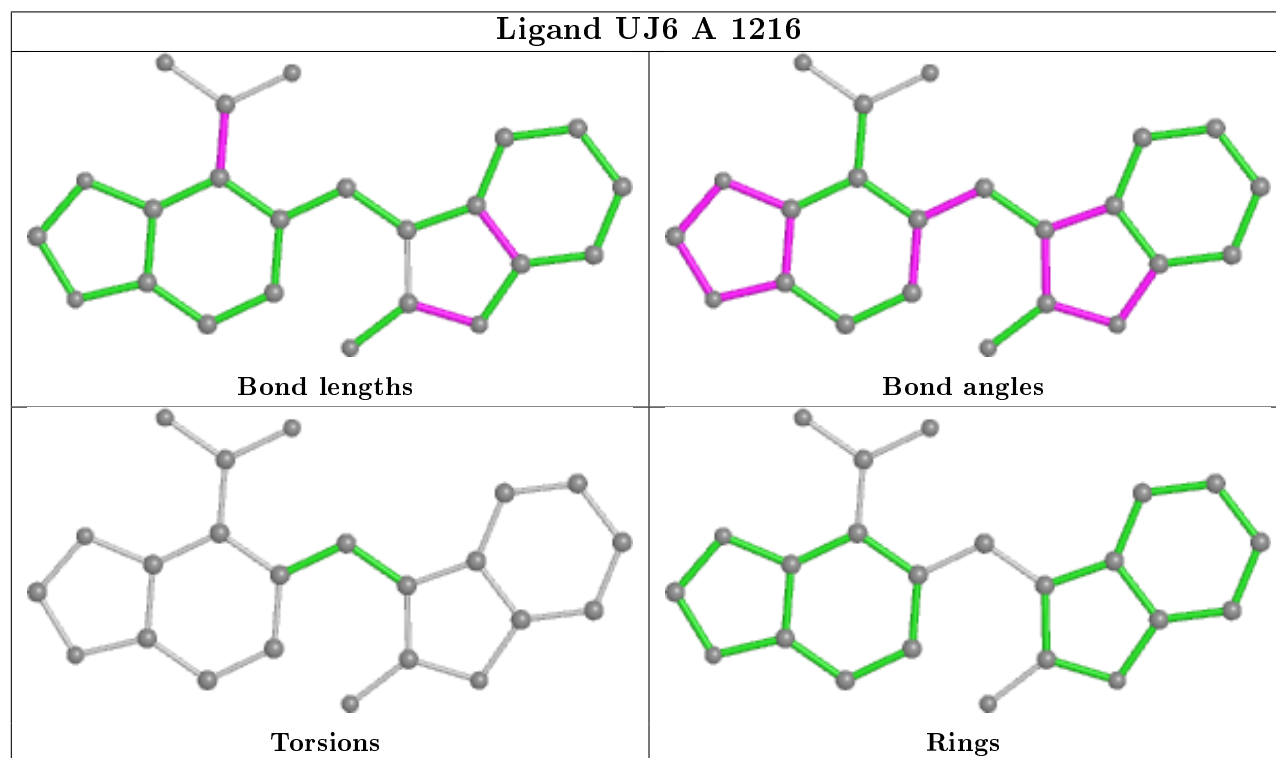
7 monomers are involved in 21 short contacts:

Mol	Chain	Res	Type	Clashes	Symm-Clashes
3	B	1215	ACT	9	0
3	A	1212	ACT	1	0
3	B	1216	ACT	10	0
4	B	1217	EDO	2	0
4	B	1218	EDO	5	0
3	B	1214	ACT	2	0
3	B	1213	ACT	2	0

The following is a two-dimensional graphical depiction of Mogul quality analysis of bond lengths, bond angles, torsion angles, and ring geometry for all instances of the Ligand of Interest. In addition, ligands with molecular weight > 250 and outliers as shown on the validation Tables will also be included. For torsion angles, if less than 5% of the Mogul distribution of torsion angles is within 10 degrees of the torsion angle in question, then that torsion angle is considered an outlier. Any bond that is central to one or more torsion angles identified as an outlier by Mogul will be highlighted in the graph. For rings, the root-mean-square deviation (RMSD) between the ring in question and similar rings identified by Mogul is calculated over all ring torsion angles. If the



average RMSD is greater than 60 degrees and the minimal RMSD between the ring in question and any Mogul-identified rings is also greater than 60 degrees, then that ring is considered an outlier. The outliers are highlighted in purple. The color gray indicates Mogul did not find sufficient equivalents in the CSD to analyse the geometry.



## 5.7 Other polymers

There are no such residues in this entry.

## 5.8 Polymer linkage issues

There are no chain breaks in this entry.

## 6 Fit of model and data ⓘ

### 6.1 Protein, DNA and RNA chains ⓘ

In the following table, the column labelled ‘#RSRZ> 2’ contains the number (and percentage) of RSRZ outliers, followed by percent RSRZ outliers for the chain as percentile scores relative to all X-ray entries and entries of similar resolution. The OWAB column contains the minimum, median, 95<sup>th</sup> percentile and maximum values of the occupancy-weighted average B-factor per residue. The column labelled ‘Q< 0.9’ lists the number of (and percentage) of residues with an average occupancy less than 0.9.

Mol	Chain	Analysed	<RSRZ>	#RSRZ>2		OWAB(Å <sup>2</sup> )	Q<0.9
1	A	148/183 (80%)	0.09	13 (8%)	10 11	12, 20, 60, 95	1 (0%)
1	B	148/183 (80%)	0.10	10 (6%)	17 19	12, 20, 57, 90	0
All	All	296/366 (80%)	0.10	23 (7%)	13 15	12, 20, 61, 95	1 (0%)

All (23) RSRZ outliers are listed below:

Mol	Chain	Res	Type	RSRZ
1	A	143	TYR	11.4
1	B	143	TYR	11.0
1	A	142	PRO	5.6
1	B	142	PRO	5.5
1	A	141	ILE	4.5
1	A	194	TYR	4.3
1	A	144	ASN	4.2
1	B	194	TYR	4.0
1	B	144	ASN	3.6
1	B	141	ILE	3.6
1	A	188	LYS	3.6
1	A	140	GLY	3.5
1	B	140	GLY	3.4
1	A	149	GLY	3.2
1	B	148	GLN	3.2
1	A	145	PRO	3.1
1	A	146	GLN	3.0
1	A	148	GLN	3.0
1	B	147	SER	2.7
1	B	188	LYS	2.6
1	A	147	SER	2.3
1	B	145	PRO	2.1
1	A	209	GLN	2.0

## 6.2 Non-standard residues in protein, DNA, RNA chains [i](#)

There are no non-standard protein/DNA/RNA residues in this entry.

## 6.3 Carbohydrates [i](#)

There are no carbohydrates in this entry.

## 6.4 Ligands [i](#)

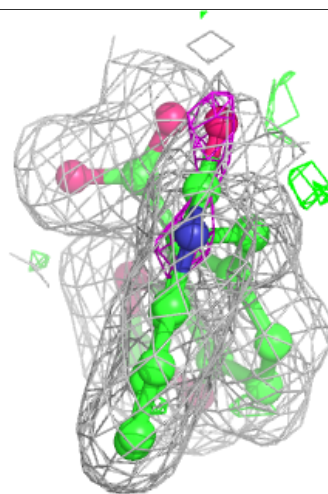
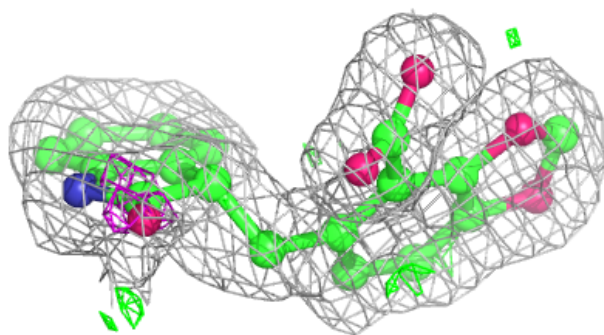
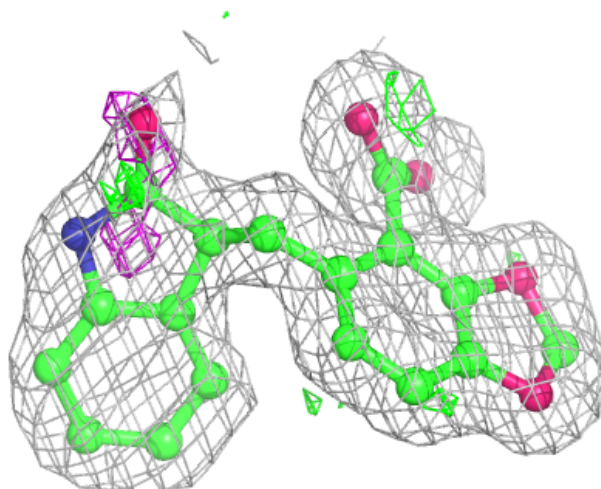
In the following table, the Atoms column lists the number of modelled atoms in the group and the number defined in the chemical component dictionary. The B-factors column lists the minimum, median, 95<sup>th</sup> percentile and maximum values of B factors of atoms in the group. The column labelled 'Q< 0.9' lists the number of atoms with occupancy less than 0.9.

Mol	Type	Chain	Res	Atoms	RSCC	RSR	B-factors( $\text{\AA}^2$ )	Q<0.9
3	ACT	A	1212	4/4	0.53	0.17	41,43,43,44	0
3	ACT	B	1212	4/4	0.64	0.15	39,42,42,45	0
3	ACT	B	1214	4/4	0.78	0.18	40,43,44,45	0
3	ACT	A	1214	4/4	0.81	0.17	45,46,47,47	0
4	EDO	A	1215	4/4	0.82	0.16	33,39,39,43	0
4	EDO	B	1218	4/4	0.87	0.14	36,37,37,44	0
3	ACT	B	1216	4/4	0.88	0.12	24,25,27,27	0
3	ACT	A	1213	4/4	0.88	0.14	33,33,34,35	0
5	UJ6	B	1219	23/23	0.89	0.11	17,19,27,33	0
5	UJ6	A	1216	23/23	0.90	0.11	18,20,28,33	0
4	EDO	B	1217	4/4	0.91	0.13	30,34,36,38	0
3	ACT	B	1213	4/4	0.91	0.14	35,35,38,38	0
3	ACT	B	1215	4/4	0.92	0.12	23,25,27,27	0
2	SO4	A	1211	5/5	0.96	0.11	22,23,24,25	5
2	SO4	A	1210	5/5	0.96	0.08	28,29,32,34	5
2	SO4	B	1211	5/5	0.96	0.11	25,26,27,29	5
2	SO4	B	1210	5/5	0.97	0.10	27,28,30,33	5

The following is a graphical depiction of the model fit to experimental electron density of all instances of the Ligand of Interest. In addition, ligands with molecular weight > 250 and outliers as shown on the geometry validation Tables will also be included. Each fit is shown from different orientation to approximate a three-dimensional view.

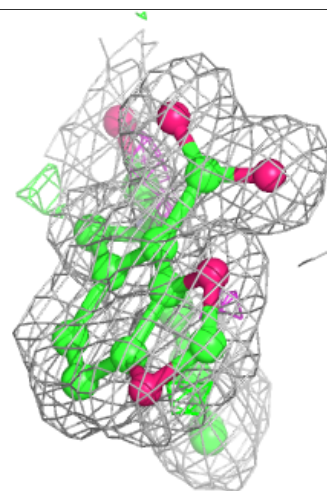
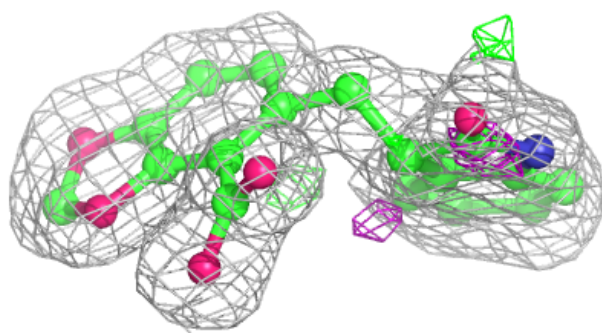
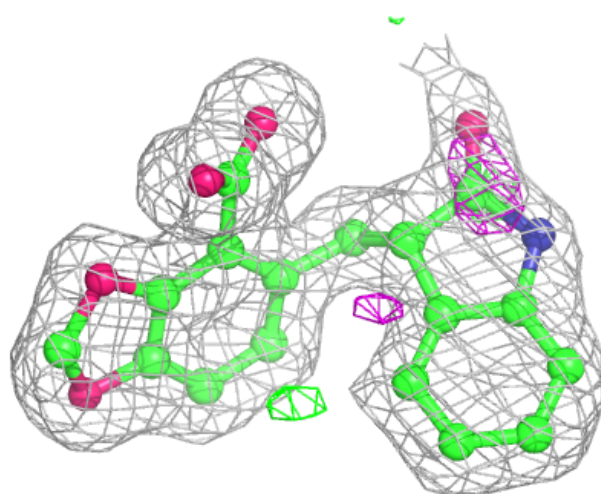
**Electron density around UJ6 B 1219:**

$2mF_o-DF_c$  (at 0.7 rmsd) in gray  
 $mF_o-DF_c$  (at 3 rmsd) in purple (negative)  
and green (positive)



**Electron density around UJ6 A 1216:**

$2mF_o-DF_c$  (at 0.7 rmsd) in gray  
 $mF_o-DF_c$  (at 3 rmsd) in purple (negative)  
and green (positive)



## 6.5 Other polymers ⓘ

There are no such residues in this entry.