



Full wwPDB X-ray Structure Validation Report ⓘ

May 25, 2020 – 02:43 pm BST

PDB ID : 6CGE
Title : Crystal structure of human 17beta-HSD type 1 in ternary complex with PBRM and NADP+
Authors : Li, T.; Lin, S.X.
Deposited on : 2018-02-20
Resolution : 2.20 Å(reported)

This is a Full wwPDB X-ray Structure Validation Report for a publicly released PDB entry.

We welcome your comments at validation@mail.wwpdb.org

A user guide is available at

<https://www.wwpdb.org/validation/2017/XrayValidationReportHelp>

with specific help available everywhere you see the ⓘ symbol.

The following versions of software and data (see [references ⓘ](#)) were used in the production of this report:

MolProbity : 4.02b-467
Mogul : 1.8.5 (274361), CSD as541be (2020)
Xtriage (Phenix) : 1.13
EDS : 2.11
buster-report : 1.1.7 (2018)
Percentile statistics : 20191225.v01 (using entries in the PDB archive December 25th 2019)
Refmac : 5.8.0158
CCP4 : 7.0.044 (Gargrove)
Ideal geometry (proteins) : Engh & Huber (2001)
Ideal geometry (DNA, RNA) : Parkinson et al. (1996)
Validation Pipeline (wwPDB-VP) : 2.11

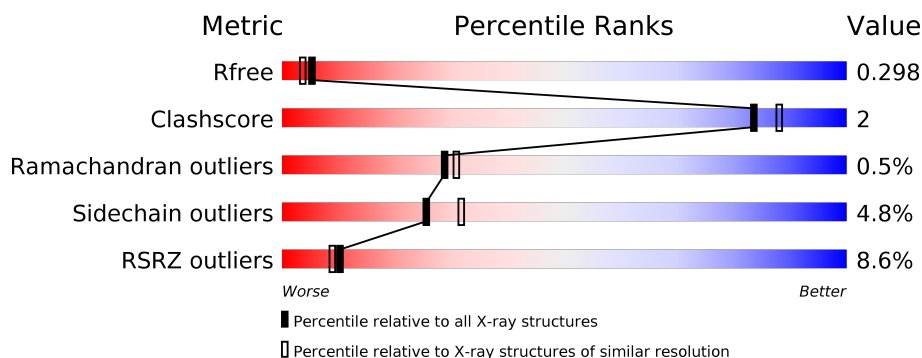
1 Overall quality at a glance

The following experimental techniques were used to determine the structure:

X-RAY DIFFRACTION

The reported resolution of this entry is 2.20 Å.

Percentile scores (ranging between 0-100) for global validation metrics of the entry are shown in the following graphic. The table shows the number of entries on which the scores are based.



Metric	Whole archive (#Entries)	Similar resolution (#Entries, resolution range(Å))
R_{free}	130704	4898 (2.20-2.20)
Clashscore	141614	5594 (2.20-2.20)
Ramachandran outliers	138981	5503 (2.20-2.20)
Sidechain outliers	138945	5504 (2.20-2.20)
RSRZ outliers	127900	4800 (2.20-2.20)

The table below summarises the geometric issues observed across the polymeric chains and their fit to the electron density. The red, orange, yellow and green segments on the lower bar indicate the fraction of residues that contain outliers for ≥ 3 , 2, 1 and 0 types of geometric quality criteria respectively. A grey segment represents the fraction of residues that are not modelled. The numeric value for each fraction is indicated below the corresponding segment, with a dot representing fractions $\leq 5\%$. The upper red bar (where present) indicates the fraction of residues that have poor fit to the electron density. The numeric value is given above the bar.

Mol	Chain	Length	Quality of chain
1	A	328	<div> <div>8%</div> <div> <div></div> <div>77%</div> <div>7%</div> <div>15%</div> </div> </div>
1	B	328	<div> <div>7%</div> <div> <div></div> <div>73%</div> <div>11%</div> <div>16%</div> </div> </div>

2 Entry composition [i](#)

There are 4 unique types of molecules in this entry. The entry contains 4398 atoms, of which 0 are hydrogens and 0 are deuteriums.

In the tables below, the ZeroOcc column contains the number of atoms modelled with zero occupancy, the AltConf column contains the number of residues with at least one atom in alternate conformation and the Trace column contains the number of residues modelled with at most 2 atoms.

- Molecule 1 is a protein called Estradiol 17-beta-dehydrogenase 1.

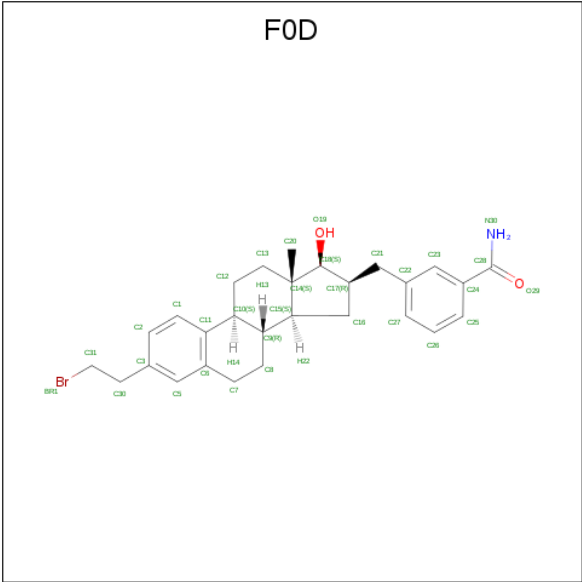
Mol	Chain	Residues	Atoms					ZeroOcc	AltConf	Trace
1	A	279	Total	C	N	O	S	0	0	0
			2132	1351	379	391	11			
1	B	277	Total	C	N	O	S	0	0	0
			2115	1340	375	389	11			

- Molecule 2 is NADP NICOTINAMIDE-ADENINE-DINUCLEOTIDE PHOSPHATE (three-letter code: NAP) (formula: C₂₁H₂₈N₇O₁₇P₃).



Mol	Chain	Residues	Atoms					ZeroOcc	AltConf
2	A	1	Total	C	N	O	P	0	0
			31	10	5	13	3		
2	B	1	Total	C	N	O	P	0	0
			31	10	5	13	3		

- Molecule 3 is 3-{[(14beta,16alpha,17alpha)-3-(2-bromoethyl)-17-hydroxyestra-1,3,5(10)-trien-16-yl]methyl}benzamide (three-letter code: F0D) (formula: C₂₈H₃₄BrNO₂) (labeled as "Ligand of Interest" by author).

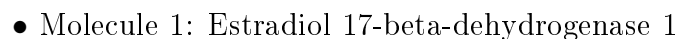


Mol	Chain	Residues	Atoms				ZeroOcc	AltConf
3	A	1	Total	C	N	O	0	0
			31	28	1	2		
3	B	1	Total	C	N	O	0	0
			31	28	1	2		

- Molecule 4 is water.

Mol	Chain	Residues	Atoms		ZeroOcc	AltConf
4	A	12	Total	O	0	0
			12	12		
4	B	15	Total	O	0	0
			15	15		

- Molecule 1: Estradiol 17-beta-dehydrogenase 1



4 Data and refinement statistics

Property	Value	Source
Space group	P 21 21 21	Depositor
Cell constants a, b, c, α , β , γ	42.82Å 108.94Å 116.36Å 90.00° 90.00° 90.00°	Depositor
Resolution (Å)	24.67 – 2.20 24.67 – 2.20	Depositor EDS
% Data completeness (in resolution range)	99.4 (24.67-2.20) 99.5 (24.67-2.20)	Depositor EDS
R_{merge}	(Not available)	Depositor
R_{sym}	0.10	Depositor
$\langle I/\sigma(I) \rangle$ ¹	2.50 (at 2.19Å)	Xtriage
Refinement program	REFMAC 5.8.0135	Depositor
R, R_{free}	0.223 , 0.303 0.229 , 0.298	Depositor DCC
R_{free} test set	1459 reflections (5.15%)	wwPDB-VP
Wilson B-factor (Å ²)	33.0	Xtriage
Anisotropy	0.596	Xtriage
Bulk solvent k_{sol} (e/Å ³), B_{sol} (Å ²)	0.34 , 37.6	EDS
L-test for twinning ²	$\langle L \rangle = 0.49$, $\langle L^2 \rangle = 0.32$	Xtriage
Estimated twinning fraction	No twinning to report.	Xtriage
F_o, F_c correlation	0.94	EDS
Total number of atoms	4398	wwPDB-VP
Average B, all atoms (Å ²)	47.0	wwPDB-VP

Xtriage's analysis on translational NCS is as follows: *The largest off-origin peak in the Patterson function is 6.23% of the height of the origin peak. No significant pseudotranslation is detected.*

¹Intensities estimated from amplitudes.

²Theoretical values of $\langle |L| \rangle$, $\langle L^2 \rangle$ for acentric reflections are 0.5, 0.333 respectively for untwinned datasets, and 0.375, 0.2 for perfectly twinned datasets.

5 Model quality

5.1 Standard geometry

Bond lengths and bond angles in the following residue types are not validated in this section: F0D, NAP

The Z score for a bond length (or angle) is the number of standard deviations the observed value is removed from the expected value. A bond length (or angle) with $|Z| > 5$ is considered an outlier worth inspection. RMSZ is the root-mean-square of all Z scores of the bond lengths (or angles).

Mol	Chain	Bond lengths		Bond angles	
		RMSZ	$\# Z > 5$	RMSZ	$\# Z > 5$
1	A	0.56	0/2171	0.79	2/2945 (0.1%)
1	B	0.56	0/2153	0.80	3/2921 (0.1%)
All	All	0.56	0/4324	0.80	5/5866 (0.1%)

There are no bond length outliers.

All (5) bond angle outliers are listed below:

Mol	Chain	Res	Type	Atoms	Z	Observed(°)	Ideal(°)
1	A	245	ARG	NE-CZ-NH2	7.48	124.04	120.30
1	B	136	ARG	NE-CZ-NH1	5.32	122.96	120.30
1	B	132	ARG	NE-CZ-NH1	5.09	122.85	120.30
1	B	120	ARG	NE-CZ-NH1	5.07	122.83	120.30
1	A	131	ARG	NE-CZ-NH1	5.00	122.80	120.30

There are no chirality outliers.

There are no planarity outliers.

5.2 Too-close contacts

In the following table, the Non-H and H(model) columns list the number of non-hydrogen atoms and hydrogen atoms in the chain respectively. The H(added) column lists the number of hydrogen atoms added and optimized by MolProbity. The Clashes column lists the number of clashes within the asymmetric unit, whereas Symm-Clashes lists symmetry related clashes.

Mol	Chain	Non-H	H(model)	H(added)	Clashes	Symm-Clashes
1	A	2132	0	2169	8	0
1	B	2115	0	2150	16	0
2	A	31	0	11	0	0
2	B	31	0	11	0	0

Continued on next page...

Continued from previous page...

Mol	Chain	Non-H	H(model)	H(added)	Clashes	Symm-Clashes
3	A	31	0	0	0	0
3	B	31	0	0	0	0
4	A	12	0	0	0	0
4	B	15	0	0	0	0
All	All	4398	0	4341	21	0

The all-atom clashscore is defined as the number of clashes found per 1000 atoms (including hydrogen atoms). The all-atom clashscore for this structure is 2.

All (21) close contacts within the same asymmetric unit are listed below, sorted by their clash magnitude.

Atom-1	Atom-2	Interatomic distance (Å)	Clash overlap (Å)
1:B:86:VAL:HG11	1:B:244:LEU:HD21	1.77	0.67
1:A:216:TYR:CD1	1:A:219:LEU:HD12	2.38	0.58
1:B:64:LEU:HD21	1:B:72:VAL:HG22	1.89	0.55
1:B:86:VAL:HG21	1:B:244:LEU:CD2	2.37	0.54
1:B:180:LEU:HD23	1:B:181:SER:N	2.22	0.53
1:A:267:LEU:HD22	1:B:267:LEU:HD22	1.90	0.52
1:A:86:VAL:HG11	1:A:244:LEU:HD21	1.94	0.50
1:A:216:TYR:HD1	1:A:219:LEU:HD12	1.78	0.48
1:B:203:VAL:O	1:B:207:THR:HG22	2.13	0.48
1:B:86:VAL:HG21	1:B:244:LEU:HD21	1.95	0.48
1:B:35:THR:C	1:B:36:LEU:HD12	2.34	0.47
1:A:169:LEU:HD11	1:B:99:LEU:HD22	1.96	0.47
1:A:42:GLN:NE2	1:A:46:TRP:HE1	2.12	0.47
1:B:269:ASP:HB2	1:B:274:ASN:HD22	1.80	0.47
1:A:149:LEU:HB2	1:A:152:ASN:HD22	1.81	0.46
1:B:260:LEU:N	1:B:261:PRO:CD	2.82	0.43
1:B:263:LEU:O	1:B:267:LEU:HG	2.19	0.43
1:A:171:VAL:HA	1:B:276:VAL:HG13	2.02	0.42
1:B:221:HIS:CD2	1:B:283:VAL:HA	2.55	0.41
1:B:208:ASP:OD1	1:B:208:ASP:N	2.53	0.41
1:B:231:GLN:NE2	1:B:255:THR:OG1	2.50	0.41

There are no symmetry-related clashes.

5.3 Torsion angles

5.3.1 Protein backbone

In the following table, the Percentiles column shows the percent Ramachandran outliers of the chain as a percentile score with respect to all X-ray entries followed by that with respect to entries of similar resolution.

The Analysed column shows the number of residues for which the backbone conformation was analysed, and the total number of residues.

Mol	Chain	Analysed	Favoured	Allowed	Outliers	Percentiles	
1	A	275/328 (84%)	256 (93%)	17 (6%)	2 (1%)	22	22
1	B	273/328 (83%)	266 (97%)	6 (2%)	1 (0%)	34	37
All	All	548/656 (84%)	522 (95%)	23 (4%)	3 (0%)	29	31

All (3) Ramachandran outliers are listed below:

Mol	Chain	Res	Type
1	A	200	PRO
1	A	258	ARG
1	B	208	ASP

5.3.2 Protein sidechains

In the following table, the Percentiles column shows the percent sidechain outliers of the chain as a percentile score with respect to all X-ray entries followed by that with respect to entries of similar resolution.

The Analysed column shows the number of residues for which the sidechain conformation was analysed, and the total number of residues.

Mol	Chain	Analysed	Rotameric	Outliers	Percentiles	
1	A	230/257 (90%)	218 (95%)	12 (5%)	23	28
1	B	228/257 (89%)	218 (96%)	10 (4%)	28	35
All	All	458/514 (89%)	436 (95%)	22 (5%)	25	32

All (22) residues with a non-rotameric sidechain are listed below:

Mol	Chain	Res	Type
1	A	111	LEU
1	A	189	HIS
1	A	204	LEU

Continued on next page...

Continued from previous page...

Mol	Chain	Res	Type
1	A	213	HIS
1	A	224	GLN
1	A	226	PHE
1	A	227	ARG
1	A	245	ARG
1	A	257	GLU
1	A	258	ARG
1	A	271	SER
1	A	277	THR
1	B	29	SER
1	B	40	LYS
1	B	69	SER
1	B	128	ASP
1	B	131	ARG
1	B	174	LEU
1	B	214	ARG
1	B	223	LYS
1	B	241	LEU
1	B	248	LYS

Some sidechains can be flipped to improve hydrogen bonding and reduce clashes. All (6) such sidechains are listed below:

Mol	Chain	Res	Type
1	A	42	GLN
1	A	224	GLN
1	B	42	GLN
1	B	63	GLN
1	B	231	GLN
1	B	274	ASN

5.3.3 RNA ⓘ

There are no RNA molecules in this entry.

5.4 Non-standard residues in protein, DNA, RNA chains ⓘ

There are no non-standard protein/DNA/RNA residues in this entry.

5.5 Carbohydrates [i](#)

There are no carbohydrates in this entry.

5.6 Ligand geometry [i](#)

4 ligands are modelled in this entry.

In the following table, the Counts columns list the number of bonds (or angles) for which Mogul statistics could be retrieved, the number of bonds (or angles) that are observed in the model and the number of bonds (or angles) that are defined in the Chemical Component Dictionary. The Link column lists molecule types, if any, to which the group is linked. The Z score for a bond length (or angle) is the number of standard deviations the observed value is removed from the expected value. A bond length (or angle) with $|Z| > 2$ is considered an outlier worth inspection. RMSZ is the root-mean-square of all Z scores of the bond lengths (or angles).

Mol	Type	Chain	Res	Link	Bond lengths			Bond angles		
					Counts	RMSZ	# $ Z > 2$	Counts	RMSZ	# $ Z > 2$
2	NAP	B	401	-	27,33,52	1.23	3 (11%)	35,52,80	1.67	9 (25%)
2	NAP	A	401	-	27,33,52	1.26	2 (7%)	35,52,80	1.45	5 (14%)
3	F0D	B	402	1	34,35,36	1.23	2 (5%)	52,53,54	1.28	5 (9%)
3	F0D	A	402	1	34,35,36	1.21	1 (2%)	52,53,54	1.01	2 (3%)

In the following table, the Chirals column lists the number of chiral outliers, the number of chiral centers analysed, the number of these observed in the model and the number defined in the Chemical Component Dictionary. Similar counts are reported in the Torsion and Rings columns. '-' means no outliers of that kind were identified.

Mol	Type	Chain	Res	Link	Chirals	Torsions	Rings
2	NAP	B	401	-	-	3/17/37/67	0/3/3/5
2	NAP	A	401	-	-	3/17/37/67	0/3/3/5
3	F0D	B	402	1	-	0/10/53/54	0/5/5/5
3	F0D	A	402	1	-	0/10/53/54	0/5/5/5

All (8) bond length outliers are listed below:

Mol	Chain	Res	Type	Atoms	Z	Observed(Å)	Ideal(Å)
3	A	402	F0D	C6-C11	6.04	1.49	1.40
3	B	402	F0D	C6-C11	5.54	1.49	1.40
2	A	401	NAP	PN-O1N	4.14	1.63	1.50
2	B	401	NAP	PN-O1N	3.75	1.62	1.50
2	A	401	NAP	C5A-C4A	2.78	1.48	1.40
2	B	401	NAP	C5A-C4A	2.46	1.47	1.40

Continued on next page...

Continued from previous page...

Mol	Chain	Res	Type	Atoms	Z	Observed(Å)	Ideal(Å)
3	B	402	F0D	C11-C10	-2.17	1.49	1.52
2	B	401	NAP	P2B-O2B	2.09	1.63	1.59

All (21) bond angle outliers are listed below:

Mol	Chain	Res	Type	Atoms	Z	Observed(°)	Ideal(°)
3	B	402	F0D	C13-C12-C10	-4.61	106.12	112.33
2	B	401	NAP	O4B-C1B-C2B	-4.05	99.56	106.59
2	A	401	NAP	O5D-PN-O2N	3.63	121.52	107.64
3	B	402	F0D	C24-C28-N30	3.59	122.06	117.75
2	B	401	NAP	C4A-C5A-N7A	-3.53	105.72	109.40
2	B	401	NAP	N3A-C2A-N1A	-3.27	123.57	128.68
2	A	401	NAP	C4A-C5A-N7A	-3.10	106.17	109.40
2	A	401	NAP	N3A-C2A-N1A	-3.09	123.85	128.68
2	B	401	NAP	O5D-PN-O2N	3.01	119.14	107.64
2	A	401	NAP	C1B-N9A-C4A	-2.86	121.62	126.64
3	B	402	F0D	O29-C28-N30	-2.75	118.67	122.58
2	B	401	NAP	O3X-P2B-O2X	2.55	117.39	107.64
2	B	401	NAP	O3X-P2B-O2B	-2.50	94.78	105.99
3	A	402	F0D	C8-C9-C10	2.30	111.52	109.28
2	B	401	NAP	PA-O3-PN	-2.26	125.05	132.83
2	B	401	NAP	C1B-N9A-C4A	-2.26	122.66	126.64
2	A	401	NAP	C2A-N1A-C6A	2.24	122.58	118.75
3	B	402	F0D	C6-C11-C10	-2.19	118.53	121.05
3	A	402	F0D	C13-C12-C10	-2.13	109.46	112.33
2	B	401	NAP	C2A-N1A-C6A	2.04	122.24	118.75
3	B	402	F0D	C2-C3-C5	2.04	121.39	118.54

There are no chirality outliers.

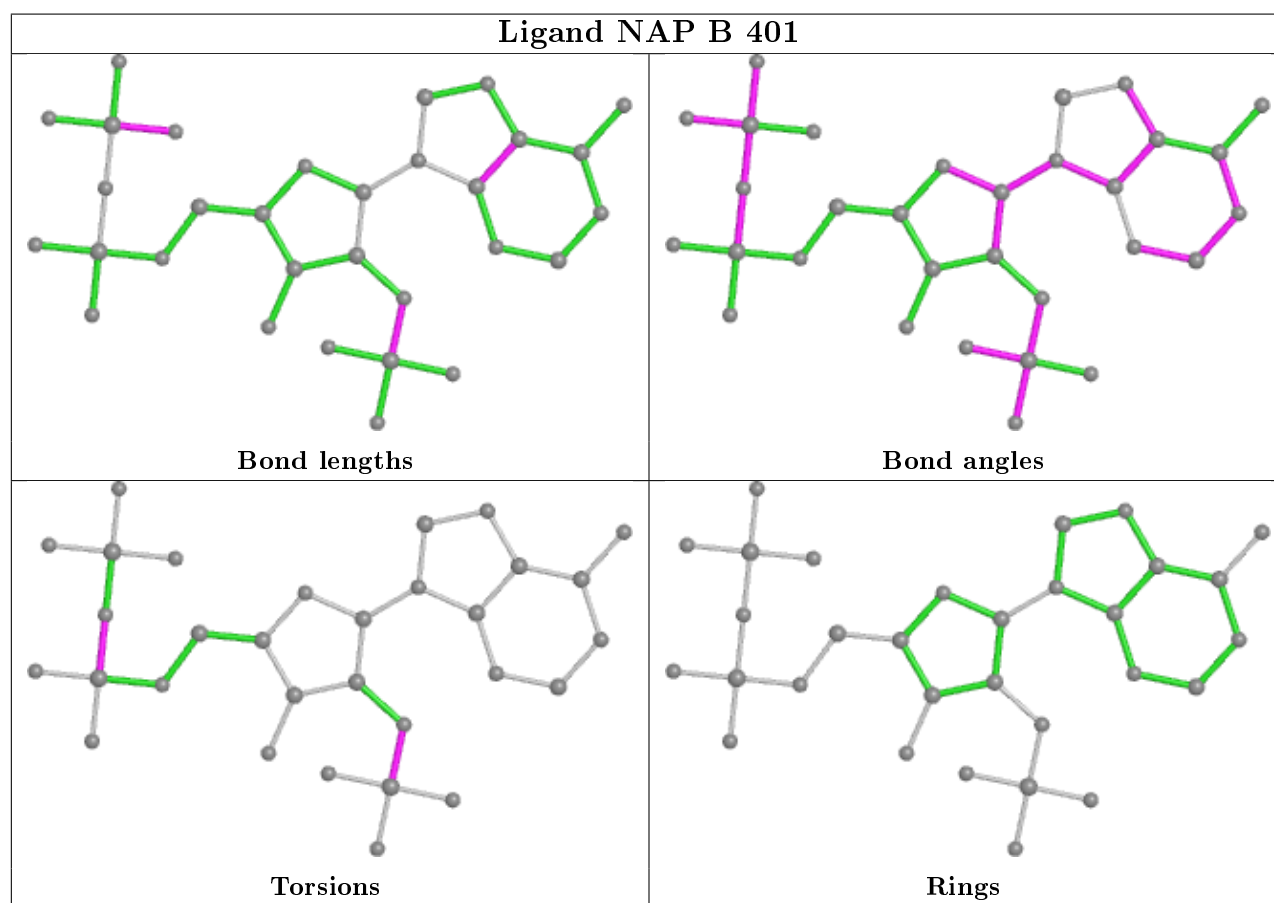
All (6) torsion outliers are listed below:

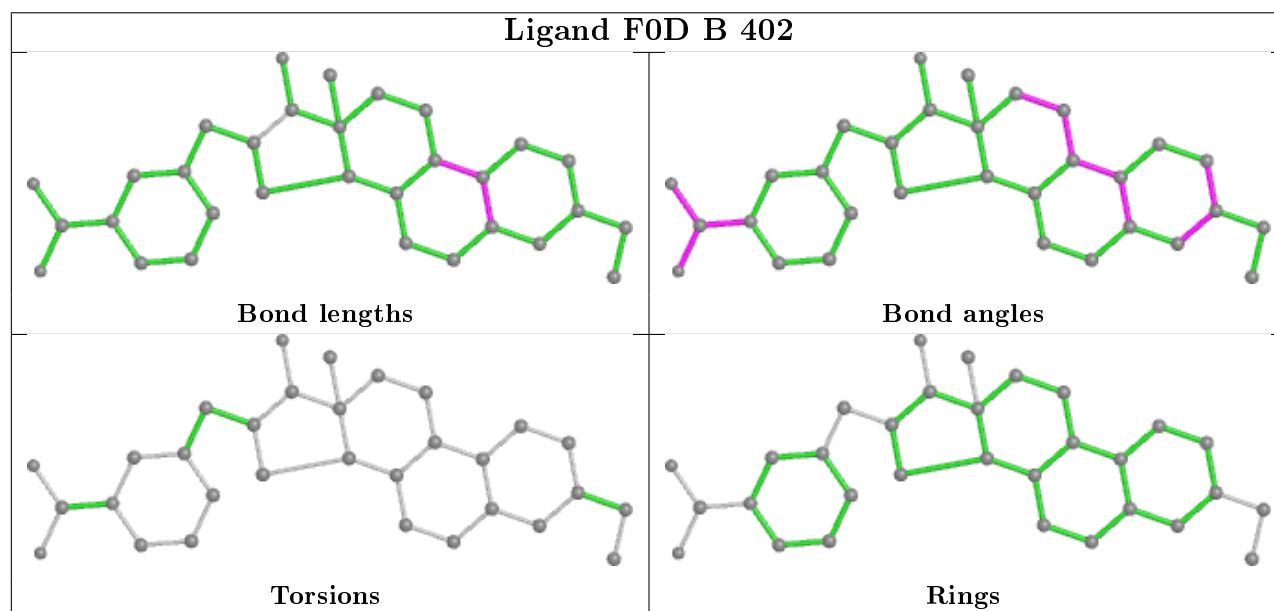
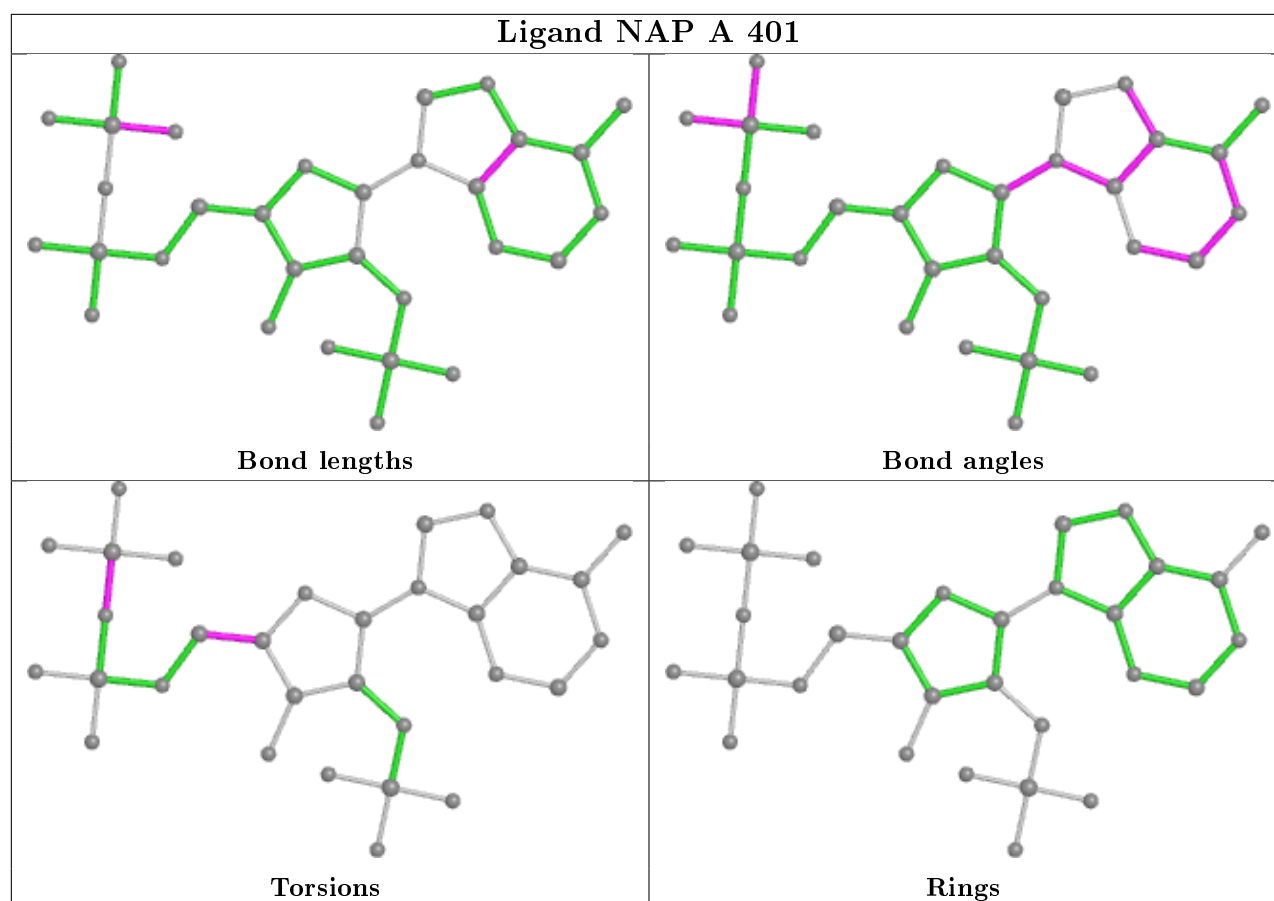
Mol	Chain	Res	Type	Atoms
2	A	401	NAP	PA-O3-PN-O5D
2	B	401	NAP	PN-O3-PA-O2A
2	A	401	NAP	PA-O3-PN-O1N
2	A	401	NAP	O4B-C4B-C5B-O5B
2	B	401	NAP	C2B-O2B-P2B-O3X
2	B	401	NAP	PN-O3-PA-O1A

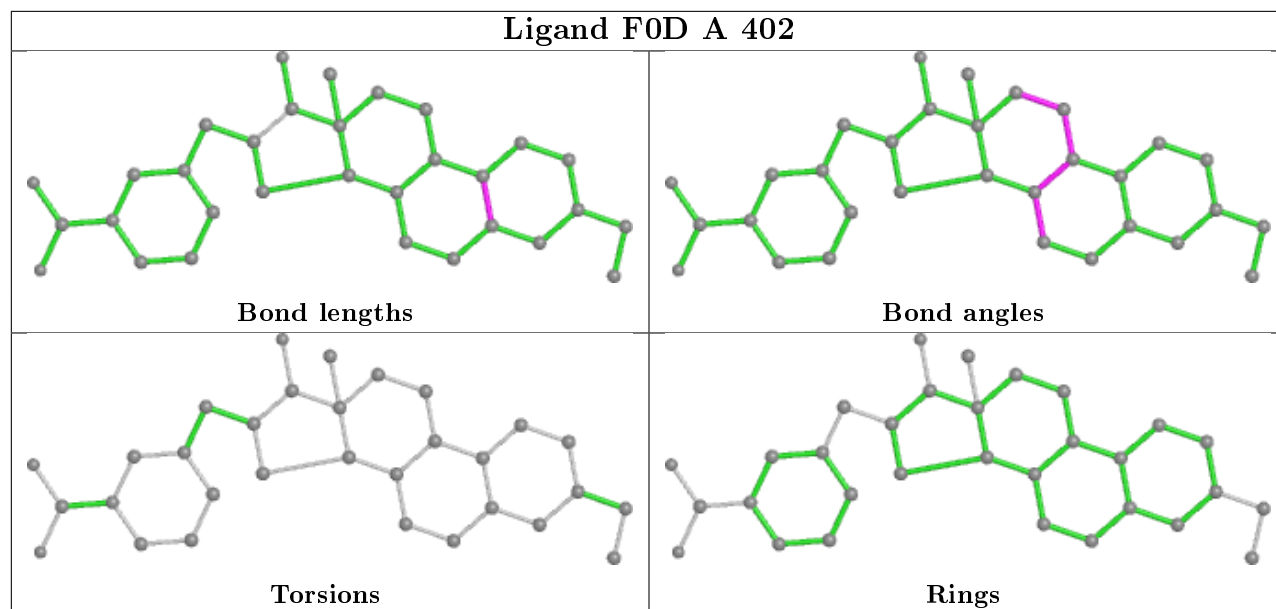
There are no ring outliers.

No monomer is involved in short contacts.

The following is a two-dimensional graphical depiction of Mogul quality analysis of bond lengths, bond angles, torsion angles, and ring geometry for all instances of the Ligand of Interest. In addition, ligands with molecular weight > 250 and outliers as shown on the validation Tables will also be included. For torsion angles, if less than 5% of the Mogul distribution of torsion angles is within 10 degrees of the torsion angle in question, then that torsion angle is considered an outlier. Any bond that is central to one or more torsion angles identified as an outlier by Mogul will be highlighted in the graph. For rings, the root-mean-square deviation (RMSD) between the ring in question and similar rings identified by Mogul is calculated over all ring torsion angles. If the average RMSD is greater than 60 degrees and the minimal RMSD between the ring in question and any Mogul-identified rings is also greater than 60 degrees, then that ring is considered an outlier. The outliers are highlighted in purple. The color gray indicates Mogul did not find sufficient equivalents in the CSD to analyse the geometry.







5.7 Other polymers [i](#)

There are no such residues in this entry.

5.8 Polymer linkage issues [i](#)

There are no chain breaks in this entry.

6 Fit of model and data

6.1 Protein, DNA and RNA chains

In the following table, the column labelled ‘#RSRZ> 2’ contains the number (and percentage) of RSRZ outliers, followed by percent RSRZ outliers for the chain as percentile scores relative to all X-ray entries and entries of similar resolution. The OWAB column contains the minimum, median, 95th percentile and maximum values of the occupancy-weighted average B-factor per residue. The column labelled ‘Q< 0.9’ lists the number of (and percentage) of residues with an average occupancy less than 0.9.

Mol	Chain	Analysed	<RSRZ>	#RSRZ>2	OWAB(Å ²)	Q<0.9
1	A	279/328 (85%)	0.25	26 (9%) 8 7	22, 42, 86, 100	0
1	B	277/328 (84%)	0.18	22 (7%) 12 11	23, 41, 77, 100	0
All	All	556/656 (84%)	0.21	48 (8%) 10 9	22, 41, 83, 100	0

All (48) RSRZ outliers are listed below:

Mol	Chain	Res	Type	RSRZ
1	B	209	ILE	8.3
1	A	285	GLY	5.5
1	A	202	GLU	4.1
1	B	285	GLY	4.1
1	A	227	ARG	4.0
1	A	229	ALA	4.0
1	A	226	PHE	3.9
1	A	1	ALA	3.8
1	B	281	ARG	3.6
1	A	259	PHE	3.5
1	A	213	HIS	3.4
1	B	201	GLU	3.4
1	A	197	LEU	3.4
1	B	268	ASP	3.2
1	B	190	THR	3.2
1	B	226	PHE	3.2
1	A	284	PHE	3.1
1	A	190	THR	3.0
1	A	198	GLY	2.9
1	B	202	GLU	2.9
1	A	258	ARG	2.9
1	B	1	ALA	2.8
1	A	172	LEU	2.8
1	A	224	GLN	2.7

Continued on next page...

Continued from previous page...

Mol	Chain	Res	Type	RSRZ
1	B	56	PRO	2.7
1	A	204	LEU	2.6
1	B	7	ILE	2.6
1	B	224	GLN	2.5
1	A	277	THR	2.5
1	B	284	PHE	2.4
1	A	220	ALA	2.4
1	A	171	VAL	2.4
1	B	131	ARG	2.4
1	A	189	HIS	2.4
1	B	210	HIS	2.4
1	A	281	ARG	2.3
1	B	267	LEU	2.3
1	B	223	LYS	2.3
1	B	205	ASP	2.3
1	A	263	LEU	2.2
1	B	227	ARG	2.2
1	B	189	HIS	2.2
1	B	149	LEU	2.2
1	A	228	GLU	2.1
1	A	209	ILE	2.1
1	A	267	LEU	2.1
1	A	225	VAL	2.1
1	B	213	HIS	2.0

6.2 Non-standard residues in protein, DNA, RNA chains [i](#)

There are no non-standard protein/DNA/RNA residues in this entry.

6.3 Carbohydrates [i](#)

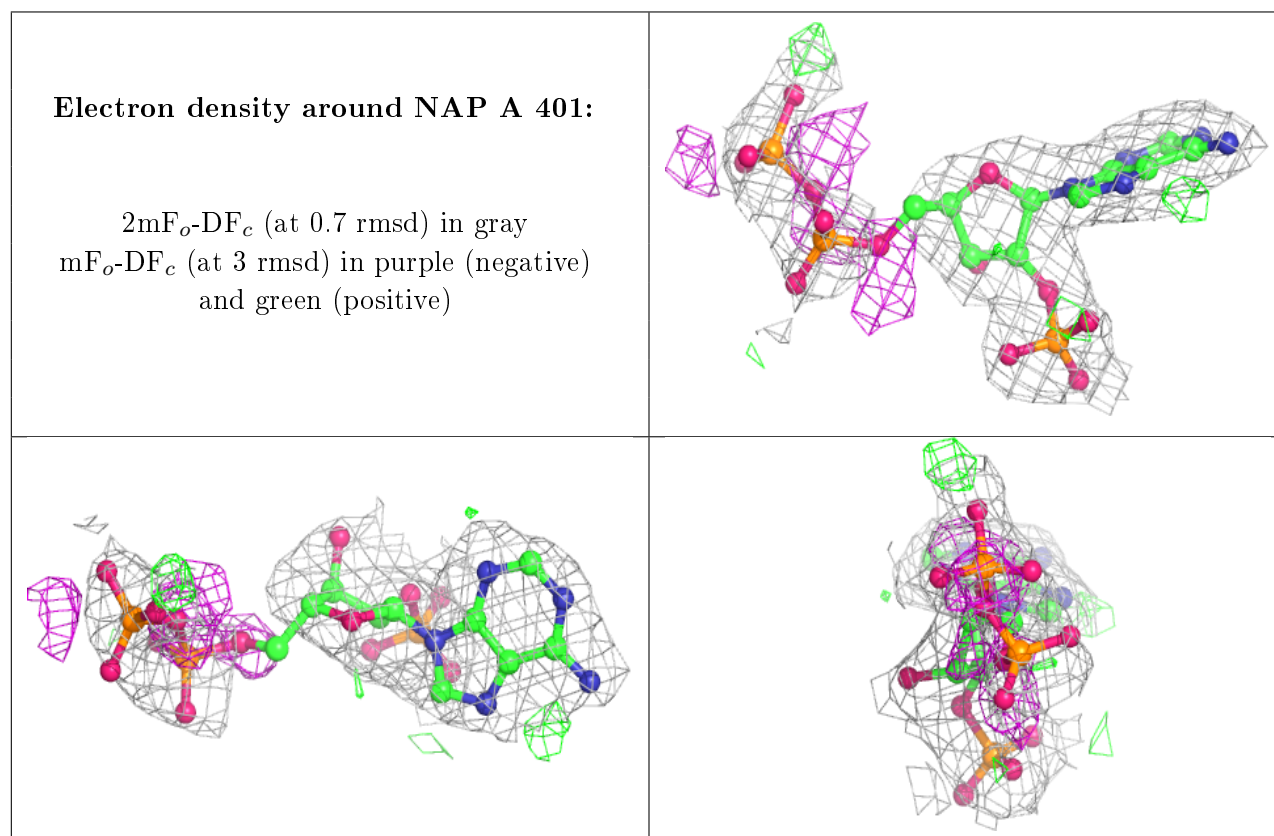
There are no carbohydrates in this entry.

6.4 Ligands [i](#)

In the following table, the Atoms column lists the number of modelled atoms in the group and the number defined in the chemical component dictionary. The B-factors column lists the minimum, median, 95th percentile and maximum values of B factors of atoms in the group. The column labelled 'Q< 0.9' lists the number of atoms with occupancy less than 0.9.

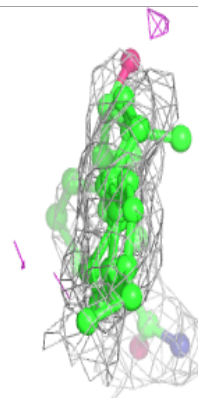
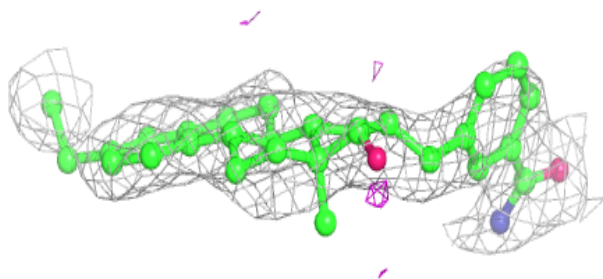
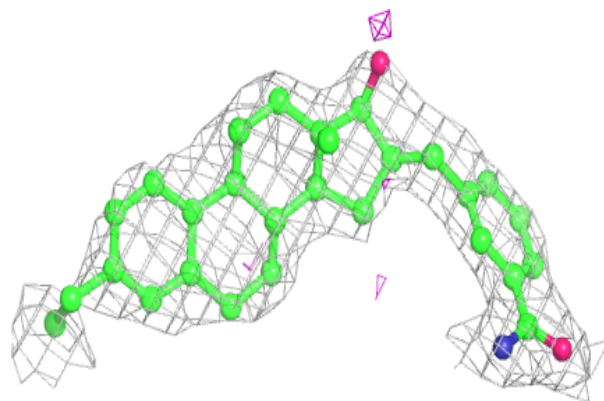
Mol	Type	Chain	Res	Atoms	RSCC	RSR	B-factors(\AA^2)	Q<0.9
2	NAP	A	401	31/48	0.84	0.18	34,60,94,98	0
3	F0D	B	402	31/32	0.86	0.18	37,55,62,71	0
2	NAP	B	401	31/48	0.88	0.14	33,51,91,94	0
3	F0D	A	402	31/32	0.90	0.16	40,56,61,62	0

The following is a graphical depiction of the model fit to experimental electron density of all instances of the Ligand of Interest. In addition, ligands with molecular weight > 250 and outliers as shown on the geometry validation Tables will also be included. Each fit is shown from different orientation to approximate a three-dimensional view.

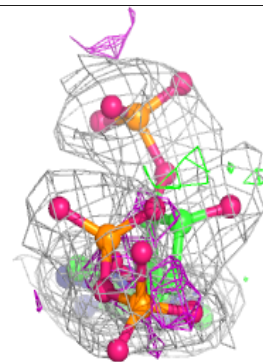
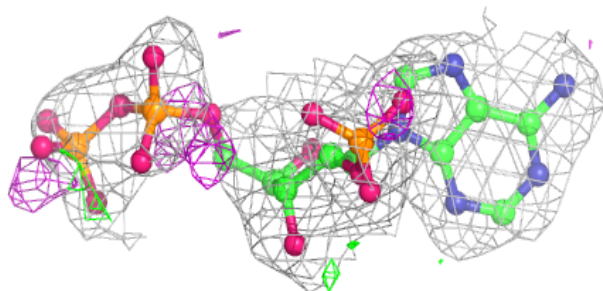
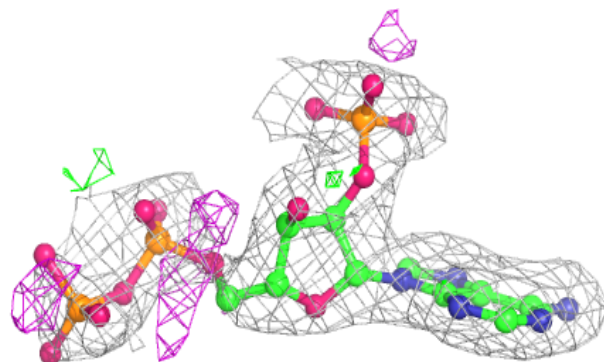


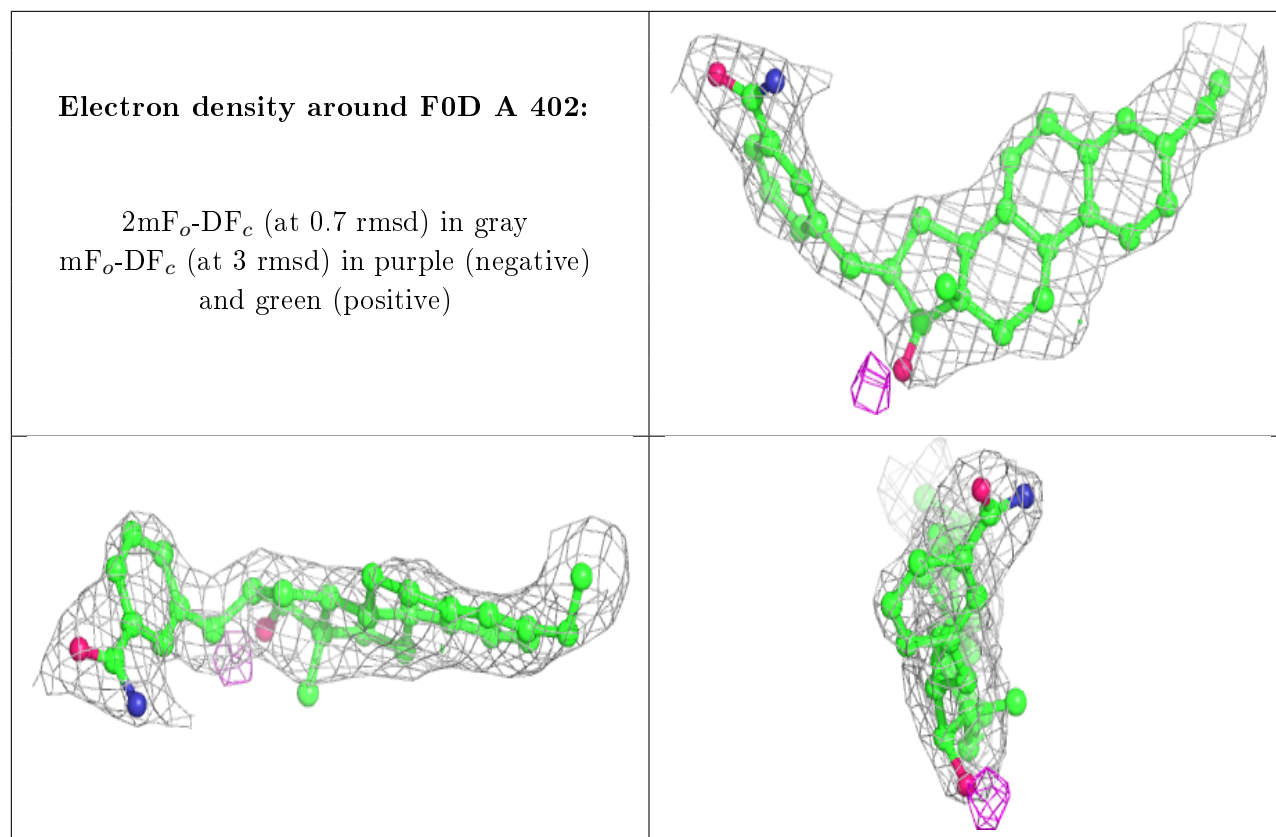
Electron density around F0D B 402:

$2mF_o-DF_c$ (at 0.7 rmsd) in gray
 mF_o-DF_c (at 3 rmsd) in purple (negative)
and green (positive)

**Electron density around NAP B 401:**

$2mF_o-DF_c$ (at 0.7 rmsd) in gray
 mF_o-DF_c (at 3 rmsd) in purple (negative)
and green (positive)





6.5 Other polymers [i](#)

There are no such residues in this entry.