



# wwPDB X-ray Structure Validation Summary Report ⓘ

Aug 29, 2020 – 09:38 PM BST

PDB ID : 6CGF  
Title : Crystal structure of HIV-1 Y188L mutant reverse transcriptase in complex with non-nucleoside inhibitor K-5a2  
Authors : Yang, Y.; Nguyen, L.A.; Smithline, Z.B.; Steitz, T.A.  
Deposited on : 2018-02-20  
Resolution : 1.94 Å(reported)

This is a wwPDB X-ray Structure Validation Summary Report for a publicly released PDB entry.

We welcome your comments at [validation@mail.wwpdb.org](mailto:validation@mail.wwpdb.org)

A user guide is available at

<https://www.wwpdb.org/validation/2017/XrayValidationReportHelp>

with specific help available everywhere you see the ⓘ symbol.

---

The following versions of software and data (see [references ⓘ](#)) were used in the production of this report:

MolProbity : 4.02b-467  
Mogul : 1.8.5 (274361), CSD as541be (2020)  
Xtriage (Phenix) : 1.13  
EDS : 2.13  
buster-report : 1.1.7 (2018)  
Percentile statistics : 20191225.v01 (using entries in the PDB archive December 25th 2019)  
Refmac : 5.8.0158  
CCP4 : 7.0.044 (Gargrove)  
Ideal geometry (proteins) : Engh & Huber (2001)  
Ideal geometry (DNA, RNA) : Parkinson et al. (1996)  
Validation Pipeline (wwPDB-VP) : 2.13

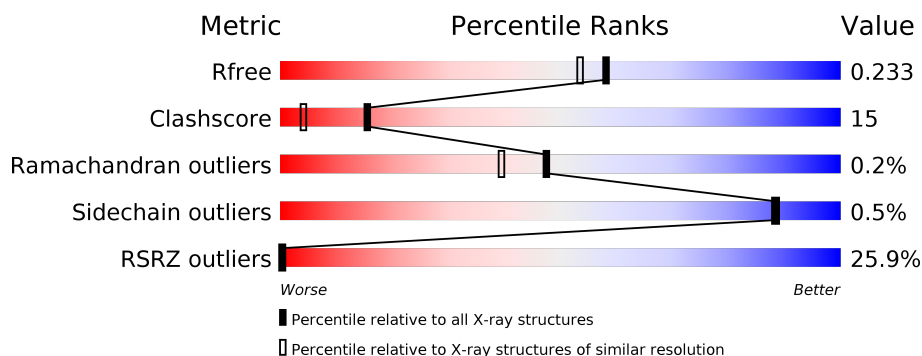
# 1 Overall quality at a glance

The following experimental techniques were used to determine the structure:

*X-RAY DIFFRACTION*

The reported resolution of this entry is 1.94 Å.

Percentile scores (ranging between 0-100) for global validation metrics of the entry are shown in the following graphic. The table shows the number of entries on which the scores are based.



Metric	Whole archive (#Entries)	Similar resolution (#Entries, resolution range(Å))
$R_{free}$	130704	4310 (1.96-1.92)
Clashscore	141614	1023 (1.94-1.94)
Ramachandran outliers	138981	1007 (1.94-1.94)
Sidechain outliers	138945	1007 (1.94-1.94)
RSRZ outliers	127900	4250 (1.96-1.92)

The table below summarises the geometric issues observed across the polymeric chains and their fit to the electron density. The red, orange, yellow and green segments on the lower bar indicate the fraction of residues that contain outliers for  $\geq 3$ , 2, 1 and 0 types of geometric quality criteria respectively. A grey segment represents the fraction of residues that are not modelled. The numeric value for each fraction is indicated below the corresponding segment, with a dot representing fractions  $\leq 5\%$ . The upper red bar (where present) indicates the fraction of residues that have poor fit to the electron density. The numeric value is given above the bar.

Mol	Chain	Length	Quality of chain
1	A	557	<div> <div>26%</div> <div>71%</div> <div>28%</div> <div>.</div> </div>
2	B	428	<div> <div>25%</div> <div>77%</div> <div>19%</div> <div>.</div> </div>

The following table lists non-polymeric compounds, carbohydrate monomers and non-standard residues in protein, DNA, RNA chains that are outliers for geometric or electron-density-fit criteria:

Mol	Type	Chain	Res	Chirality	Geometry	Clashes	Electron density
5	NA	A	603	-	-	-	X
7	EDO	A	614	-	-	-	X
7	EDO	B	511	-	-	-	X
7	EDO	B	512	-	-	X	-
7	EDO	B	515	-	-	X	-

## 2 Entry composition

There are 8 unique types of molecules in this entry. The entry contains 8966 atoms, of which 28 are hydrogens and 0 are deuteriums.

In the tables below, the ZeroOcc column contains the number of atoms modelled with zero occupancy, the AltConf column contains the number of residues with at least one atom in alternate conformation and the Trace column contains the number of residues modelled with at most 2 atoms.

- Molecule 1 is a protein called Reverse transcriptase/ribonuclease H.

Mol	Chain	Residues	Atoms					ZeroOcc	AltConf	Trace
1	A	556	Total	C	N	O	S	0	6	0
			4562	2949	762	843	8			

There are 6 discrepancies between the modelled and reference sequences:

Chain	Residue	Modelled	Actual	Comment	Reference
A	-1	MET	-	initiating methionine	UNP P03366
A	0	VAL	-	expression tag	UNP P03366
A	172	ALA	LYS	engineered mutation	UNP P03366
A	173	ALA	LYS	engineered mutation	UNP P03366
A	188	LEU	TYR	engineered mutation	UNP P03366
A	280	SER	CYS	engineered mutation	UNP P03366

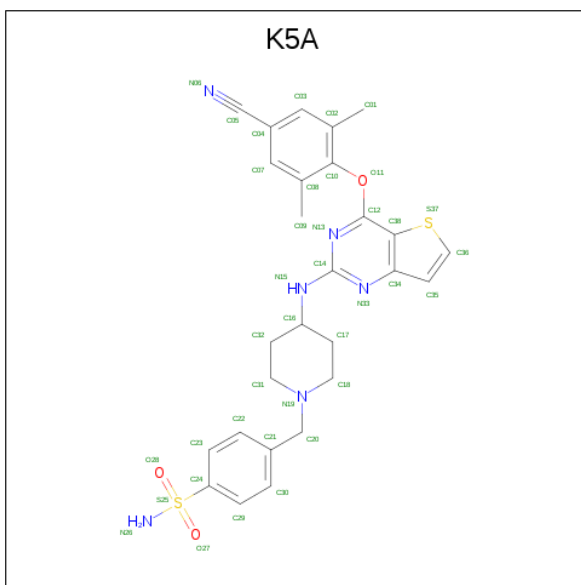
- Molecule 2 is a protein called p51 RT.

Mol	Chain	Residues	Atoms					ZeroOcc	AltConf	Trace
2	B	414	Total	C	N	O	S	0	7	0
			3490	2276	575	632	7			

There is a discrepancy between the modelled and reference sequences:

Chain	Residue	Modelled	Actual	Comment	Reference
B	280	SER	CYS	engineered mutation	UNP P03366

- Molecule 3 is 4-[(4-{[4-(4-cyano-2,6-dimethylphenoxy)thieno[3,2-d]pyrimidin-2-yl]amino}piperidin-1-yl)methyl]benzene-1-sulfonamide (three-letter code: K5A) (formula: C<sub>27</sub>H<sub>28</sub>N<sub>6</sub>O<sub>3</sub>S<sub>2</sub>) (labeled as "Ligand of Interest" by author).



Mol	Chain	Residues	Atoms						ZeroOcc	AltConf
3	A	1	Total	C	H	N	O	S	0	0
			66	27	28	6	3	2		

- Molecule 4 is MAGNESIUM ION (three-letter code: MG) (formula: Mg).

Mol	Chain	Residues	Atoms	ZeroOcc	AltConf
4	A	1	Total Mg 1 1	0	0

- Molecule 5 is SODIUM ION (three-letter code: NA) (formula: Na).

Mol	Chain	Residues	Atoms	ZeroOcc	AltConf
5	A	1	Total Na 1 1	0	0

- Molecule 6 is SULFATE ION (three-letter code: SO4) (formula: O<sub>4</sub>S).



Mol	Chain	Residues	Atoms			ZeroOcc	AltConf
6	A	1	Total	O	S	0	0
			5	4	1		
6	A	1	Total	O	S	0	0
			5	4	1		
6	A	1	Total	O	S	0	0
			5	4	1		
6	B	1	Total	O	S	0	0
			5	4	1		
6	B	1	Total	O	S	0	0
			5	4	1		
6	B	1	Total	O	S	0	0
			5	4	1		

- Molecule 7 is 1,2-ETHANEDIOL (three-letter code: EDO) (formula: C<sub>2</sub>H<sub>6</sub>O<sub>2</sub>).



Mol	Chain	Residues	Atoms			ZeroOcc	AltConf
7	A	1	Total	C	O	0	0
			4	2	2		
7	A	1	Total	C	O	0	0
			4	2	2		
7	A	1	Total	C	O	0	0
			4	2	2		
7	A	1	Total	C	O	0	0
			4	2	2		
7	A	1	Total	C	O	0	0
			4	2	2		
7	A	1	Total	C	O	0	0
			4	2	2		
7	A	1	Total	C	O	0	0
			4	2	2		
7	A	1	Total	C	O	0	0
			4	2	2		
7	B	1	Total	C	O	0	0
			4	2	2		
7	B	1	Total	C	O	0	0
			4	2	2		

*Continued on next page...*

*Continued from previous page...*

Mol	Chain	Residues	Atoms			ZeroOcc	AltConf
7	B	1	Total 4	C 2	O 2	0	0
7	B	1	Total 4	C 2	O 2	0	0
7	B	1	Total 4	C 2	O 2	0	0
7	B	1	Total 4	C 2	O 2	0	0
7	B	1	Total 4	C 2	O 2	0	0
7	B	1	Total 4	C 2	O 2	0	0
7	B	1	Total 4	C 2	O 2	0	0
7	B	1	Total 4	C 2	O 2	0	0
7	B	1	Total 4	C 2	O 2	0	0

- Molecule 8 is water.

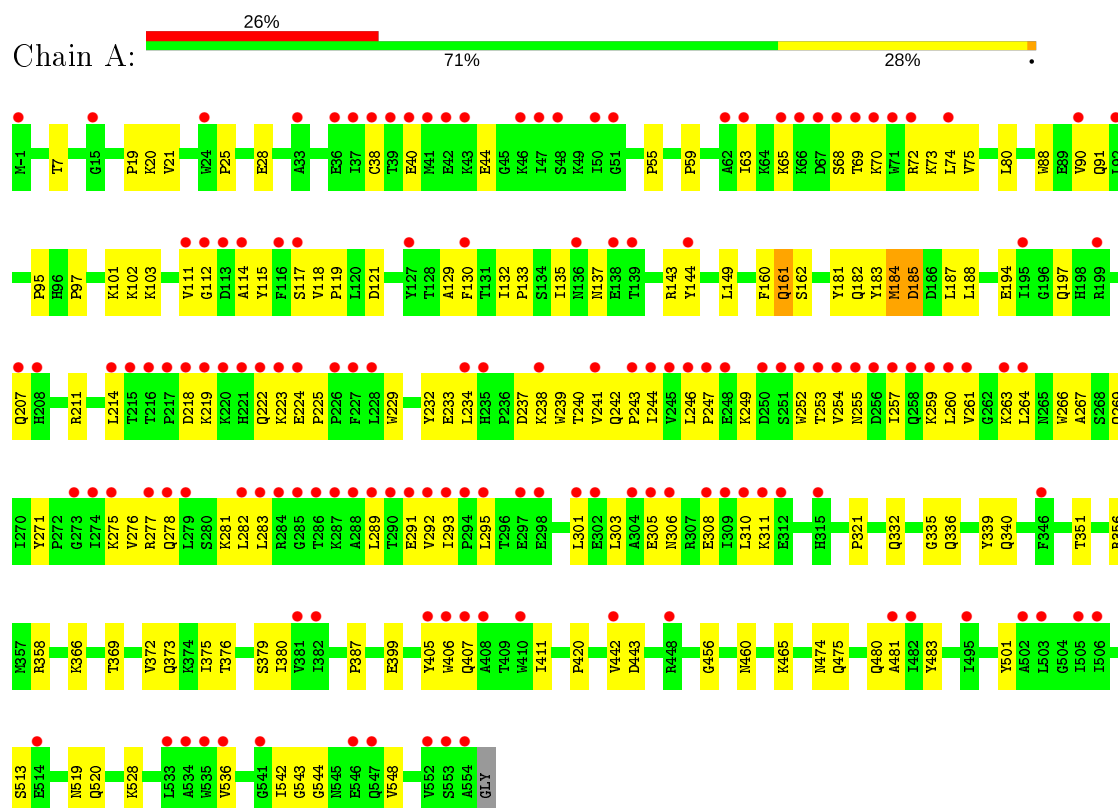
Mol	Chain	Residues	Atoms		ZeroOcc	AltConf
8	A	402	Total 402	O 402	0	0
8	B	317	Total 317	O 317	0	0



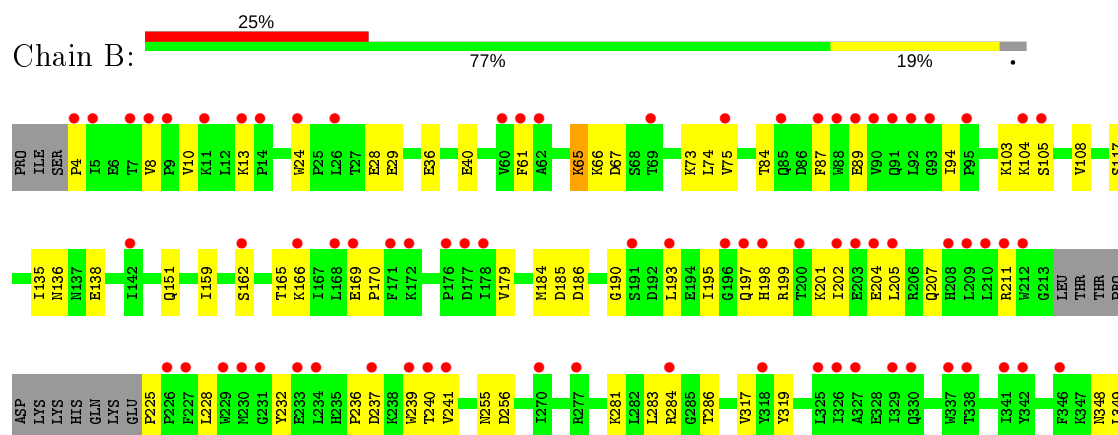
### 3 Residue-property plots

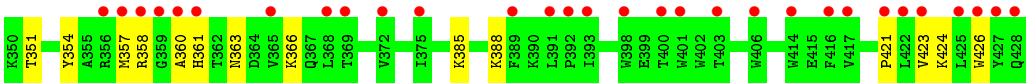
These plots are drawn for all protein, RNA, DNA and oligosaccharide chains in the entry. The first graphic for a chain summarises the proportions of the various outlier classes displayed in the second graphic. The second graphic shows the sequence view annotated by issues in geometry and electron density. Residues are color-coded according to the number of geometric quality criteria for which they contain at least one outlier: green = 0, yellow = 1, orange = 2 and red = 3 or more. A red dot above a residue indicates a poor fit to the electron density ( $RSRZ > 2$ ). Stretches of 2 or more consecutive residues without any outlier are shown as a green connector. Residues present in the sample, but not in the model, are shown in grey.

#### • Molecule 1: Reverse transcriptase/ribonuclease H



#### • Molecule 2: p51 RT





## 4 Data and refinement statistics

Property	Value	Source
Space group	C 1 2 1	Depositor
Cell constants a, b, c, $\alpha$ , $\beta$ , $\gamma$	162.70Å 72.70Å 109.05Å 90.00° 100.21° 90.00°	Depositor
Resolution (Å)	42.06 – 1.94 42.07 – 1.94	Depositor EDS
% Data completeness (in resolution range)	99.5 (42.06-1.94) 99.6 (42.07-1.94)	Depositor EDS
$R_{merge}$	0.03	Depositor
$R_{sym}$	(Not available)	Depositor
$\langle I/\sigma(I) \rangle$ <sup>1</sup>	0.97 (at 1.94Å)	Xtriage
Refinement program	PHENIX (1.13_2998)	Depositor
R, $R_{free}$	0.194 , 0.232 0.196 , 0.233	Depositor DCC
$R_{free}$ test set	4621 reflections (5.00%)	wwPDB-VP
Wilson B-factor (Å <sup>2</sup> )	57.2	Xtriage
Anisotropy	0.148	Xtriage
Bulk solvent $k_{sol}$ (e/Å <sup>3</sup> ), $B_{sol}$ (Å <sup>2</sup> )	0.30 , 71.8	EDS
L-test for twinning <sup>2</sup>	$\langle  L  \rangle = 0.50$ , $\langle L^2 \rangle = 0.33$	Xtriage
Estimated twinning fraction	No twinning to report.	Xtriage
$F_o, F_c$ correlation	0.97	EDS
Total number of atoms	8966	wwPDB-VP
Average B, all atoms (Å <sup>2</sup> )	84.0	wwPDB-VP

Xtriage's analysis on translational NCS is as follows: *The largest off-origin peak in the Patterson function is 5.01% of the height of the origin peak. No significant pseudotranslation is detected.*

<sup>1</sup>Intensities estimated from amplitudes.

<sup>2</sup>Theoretical values of  $\langle |L| \rangle$ ,  $\langle L^2 \rangle$  for acentric reflections are 0.5, 0.333 respectively for untwinned datasets, and 0.375, 0.2 for perfectly twinned datasets.

## 5 Model quality

### 5.1 Standard geometry

Bond lengths and bond angles in the following residue types are not validated in this section: NA, MG, EDO, K5A, SO4

The Z score for a bond length (or angle) is the number of standard deviations the observed value is removed from the expected value. A bond length (or angle) with  $|Z| > 5$  is considered an outlier worth inspection. RMSZ is the root-mean-square of all Z scores of the bond lengths (or angles).

Mol	Chain	Bond lengths		Bond angles	
		RMSZ	# Z  >5	RMSZ	# Z  >5
1	A	0.51	0/4680	0.49	0/6362
2	B	0.53	0/3594	0.52	0/4884
All	All	0.52	0/8274	0.50	0/11246

There are no bond length outliers.

There are no bond angle outliers.

There are no chirality outliers.

There are no planarity outliers.

### 5.2 Too-close contacts

In the following table, the Non-H and H(model) columns list the number of non-hydrogen atoms and hydrogen atoms in the chain respectively. The H(added) column lists the number of hydrogen atoms added and optimized by MolProbity. The Clashes column lists the number of clashes within the asymmetric unit, whereas Symm-Clashes lists symmetry related clashes.

Mol	Chain	Non-H	H(model)	H(added)	Clashes	Symm-Clashes
1	A	4562	0	4611	159	0
2	B	3490	0	3503	87	0
3	A	38	28	0	2	0
4	A	1	0	0	0	0
5	A	1	0	0	0	0
6	A	15	0	0	0	0
6	B	20	0	0	0	0
7	A	48	0	72	13	0
7	B	44	0	66	15	0
8	A	402	0	0	13	0
8	B	317	0	0	21	0
All	All	8938	28	8252	244	0

The all-atom clashscore is defined as the number of clashes found per 1000 atoms (including hydrogen atoms). The all-atom clashscore for this structure is 15.

The worst 5 of 244 close contacts within the same asymmetric unit are listed below, sorted by their clash magnitude.

Atom-1	Atom-2	Interatomic distance (Å)	Clash overlap (Å)
2:B:360:ALA:HB2	2:B:366:LYS:HD3	1.39	1.04
1:A:184:MET:HG2	1:A:185:ASP:H	1.25	1.00
1:A:399:GLU:HG2	7:A:614:EDO:H12	1.42	0.98
1:A:277:ARG:HB2	1:A:336[B]:GLN:HE21	1.25	0.97
1:A:259:LYS:HE2	1:A:263:LYS:HE3	1.43	0.97

There are no symmetry-related clashes.

## 5.3 Torsion angles [i](#)

### 5.3.1 Protein backbone [i](#)

In the following table, the Percentiles column shows the percent Ramachandran outliers of the chain as a percentile score with respect to all X-ray entries followed by that with respect to entries of similar resolution.

The Analysed column shows the number of residues for which the backbone conformation was analysed, and the total number of residues.

Mol	Chain	Analysed	Favoured	Allowed	Outliers	Percentiles	
1	A	560/557 (100%)	541 (97%)	17 (3%)	2 (0%)	34	24
2	B	417/428 (97%)	396 (95%)	21 (5%)	0	100	100
All	All	977/985 (99%)	937 (96%)	38 (4%)	2 (0%)	47	39

All (2) Ramachandran outliers are listed below:

Mol	Chain	Res	Type
1	A	184	MET
1	A	276	VAL

### 5.3.2 Protein sidechains [i](#)

In the following table, the Percentiles column shows the percent sidechain outliers of the chain as a percentile score with respect to all X-ray entries followed by that with respect to entries of similar resolution.

The Analysed column shows the number of residues for which the sidechain conformation was analysed, and the total number of residues.

Mol	Chain	Analysed	Rotameric	Outliers	Percentiles	
1	A	500/495 (101%)	498 (100%)	2 (0%)	91	91
2	B	383/390 (98%)	381 (100%)	2 (0%)	88	88
All	All	883/885 (100%)	879 (100%)	4 (0%)	88	88

All (4) residues with a non-rotameric sidechain are listed below:

Mol	Chain	Res	Type
1	A	161	GLN
1	A	185	ASP
2	B	65	LYS
2	B	204	GLU

Some sidechains can be flipped to improve hydrogen bonding and reduce clashes. All (1) such sidechains are listed below:

Mol	Chain	Res	Type
1	A	161	GLN

### 5.3.3 RNA [i](#)

There are no RNA molecules in this entry.

## 5.4 Non-standard residues in protein, DNA, RNA chains [i](#)

There are no non-standard protein/DNA/RNA residues in this entry.

## 5.5 Carbohydrates [i](#)

There are no monosaccharides in this entry.

## 5.6 Ligand geometry [i](#)

Of 33 ligands modelled in this entry, 2 are monoatomic - leaving 31 for Mogul analysis.

In the following table, the Counts columns list the number of bonds (or angles) for which Mogul statistics could be retrieved, the number of bonds (or angles) that are observed in the model and the number of bonds (or angles) that are defined in the Chemical Component Dictionary. The

Link column lists molecule types, if any, to which the group is linked. The Z score for a bond length (or angle) is the number of standard deviations the observed value is removed from the expected value. A bond length (or angle) with  $|Z| > 2$  is considered an outlier worth inspection. RMSZ is the root-mean-square of all Z scores of the bond lengths (or angles).

Mol	Type	Chain	Res	Link	Bond lengths			Bond angles		
					Counts	RMSZ	$\# Z  > 2$	Counts	RMSZ	$\# Z  > 2$
3	K5A	A	601	-	40,42,42	2.40	11 (27%)	50,61,61	2.83	22 (44%)
6	SO4	A	605	-	4,4,4	0.16	0	6,6,6	0.09	0
7	EDO	A	614	-	3,3,3	0.42	0	2,2,2	0.33	0
7	EDO	A	611	-	3,3,3	0.46	0	2,2,2	0.42	0
7	EDO	A	618	-	3,3,3	0.45	0	2,2,2	0.34	0
6	SO4	B	502	-	4,4,4	0.14	0	6,6,6	0.04	0
7	EDO	A	615	-	3,3,3	0.46	0	2,2,2	0.35	0
6	SO4	B	503	-	4,4,4	0.14	0	6,6,6	0.05	0
6	SO4	B	504	-	4,4,4	0.13	0	6,6,6	0.06	0
7	EDO	B	510	-	3,3,3	0.42	0	2,2,2	0.32	0
7	EDO	A	612	-	3,3,3	0.44	0	2,2,2	0.39	0
7	EDO	A	617	-	3,3,3	0.41	0	2,2,2	0.34	0
7	EDO	A	616	-	3,3,3	0.52	0	2,2,2	0.36	0
7	EDO	B	512	-	3,3,3	0.37	0	2,2,2	0.34	0
7	EDO	B	511	-	3,3,3	0.49	0	2,2,2	0.41	0
7	EDO	B	509	-	3,3,3	0.48	0	2,2,2	0.44	0
6	SO4	B	501	-	4,4,4	0.14	0	6,6,6	0.06	0
7	EDO	B	513	-	3,3,3	0.41	0	2,2,2	0.35	0
7	EDO	A	607	-	3,3,3	0.43	0	2,2,2	0.42	0
7	EDO	A	610	-	3,3,3	0.45	0	2,2,2	0.33	0
7	EDO	B	515	-	3,3,3	0.43	0	2,2,2	0.34	0
6	SO4	A	606	-	4,4,4	0.12	0	6,6,6	0.05	0
7	EDO	B	507	-	3,3,3	0.49	0	2,2,2	0.31	0
7	EDO	A	608	-	3,3,3	0.40	0	2,2,2	0.35	0
7	EDO	B	514	-	3,3,3	0.45	0	2,2,2	0.31	0
7	EDO	A	609	-	3,3,3	0.50	0	2,2,2	0.28	0
7	EDO	A	613	-	3,3,3	0.46	0	2,2,2	0.36	0
7	EDO	B	505	-	3,3,3	0.33	0	2,2,2	0.29	0
6	SO4	A	604	-	4,4,4	0.16	0	6,6,6	0.07	0
7	EDO	B	508	-	3,3,3	0.47	0	2,2,2	0.45	0
7	EDO	B	506	-	3,3,3	0.37	0	2,2,2	0.14	0

In the following table, the Chirals column lists the number of chiral outliers, the number of chiral centers analysed, the number of these observed in the model and the number defined in the Chemical Component Dictionary. Similar counts are reported in the Torsion and Rings columns. '-' means no outliers of that kind were identified.

Mol	Type	Chain	Res	Link	Chirals	Torsions	Rings
3	K5A	A	601	-	-	1/20/30/30	0/5/5/5
7	EDO	A	614	-	-	0/1/1/1	-
7	EDO	A	611	-	-	0/1/1/1	-
7	EDO	A	618	-	-	0/1/1/1	-
7	EDO	A	615	-	-	0/1/1/1	-
7	EDO	A	613	-	-	0/1/1/1	-
7	EDO	B	510	-	-	0/1/1/1	-
7	EDO	A	612	-	-	0/1/1/1	-
7	EDO	A	617	-	-	0/1/1/1	-
7	EDO	A	616	-	-	1/1/1/1	-
7	EDO	B	512	-	-	0/1/1/1	-
7	EDO	B	511	-	-	0/1/1/1	-
7	EDO	B	509	-	-	0/1/1/1	-
7	EDO	B	513	-	-	0/1/1/1	-
7	EDO	A	607	-	-	0/1/1/1	-
7	EDO	A	610	-	-	0/1/1/1	-
7	EDO	B	515	-	-	0/1/1/1	-
7	EDO	B	507	-	-	0/1/1/1	-
7	EDO	A	608	-	-	0/1/1/1	-
7	EDO	B	514	-	-	0/1/1/1	-
7	EDO	A	609	-	-	0/1/1/1	-
7	EDO	B	505	-	-	0/1/1/1	-
7	EDO	B	508	-	-	0/1/1/1	-
7	EDO	B	506	-	-	1/1/1/1	-

The worst 5 of 11 bond length outliers are listed below:

Mol	Chain	Res	Type	Atoms	Z	Observed(Å)	Ideal(Å)
3	A	601	K5A	S25-N26	7.47	1.75	1.60
3	A	601	K5A	C18-N19	6.74	1.65	1.46
3	A	601	K5A	C14-N15	5.47	1.41	1.34
3	A	601	K5A	C32-C16	4.72	1.63	1.52
3	A	601	K5A	C12-N13	3.65	1.38	1.31

The worst 5 of 22 bond angle outliers are listed below:

Mol	Chain	Res	Type	Atoms	Z	Observed(°)	Ideal(°)
3	A	601	K5A	C03-C04-C05	6.58	128.28	119.54
3	A	601	K5A	C20-N19-C31	6.37	125.24	111.06
3	A	601	K5A	C21-C20-N19	-5.54	102.38	113.12
3	A	601	K5A	C29-C24-C23	-5.36	112.96	120.44
3	A	601	K5A	C07-C04-C05	-5.12	112.74	119.54



There are no chirality outliers.

All (3) torsion outliers are listed below:

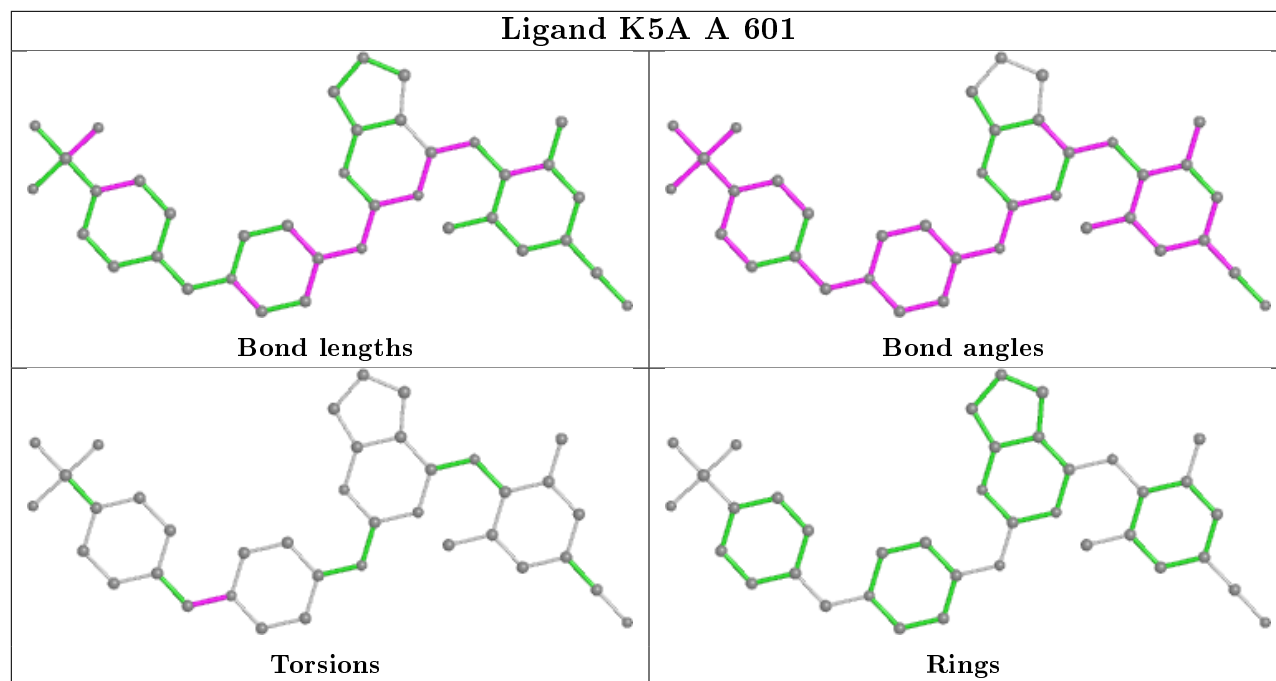
Mol	Chain	Res	Type	Atoms
3	A	601	K5A	C21-C20-N19-C18
7	A	616	EDO	O1-C1-C2-O2
7	B	506	EDO	O1-C1-C2-O2

There are no ring outliers.

14 monomers are involved in 30 short contacts:

Mol	Chain	Res	Type	Clashes	Symm-Clashes
3	A	601	K5A	2	0
7	A	614	EDO	2	0
7	A	611	EDO	3	0
7	A	617	EDO	1	0
7	B	512	EDO	4	0
7	B	511	EDO	1	0
7	B	509	EDO	1	0
7	B	513	EDO	2	0
7	A	610	EDO	3	0
7	B	515	EDO	5	0
7	A	608	EDO	2	0
7	B	514	EDO	1	0
7	A	609	EDO	2	0
7	B	505	EDO	1	0

The following is a two-dimensional graphical depiction of Mogul quality analysis of bond lengths, bond angles, torsion angles, and ring geometry for all instances of the Ligand of Interest. In addition, ligands with molecular weight > 250 and outliers as shown on the validation Tables will also be included. For torsion angles, if less than 5% of the Mogul distribution of torsion angles is within 10 degrees of the torsion angle in question, then that torsion angle is considered an outlier. Any bond that is central to one or more torsion angles identified as an outlier by Mogul will be highlighted in the graph. For rings, the root-mean-square deviation (RMSD) between the ring in question and similar rings identified by Mogul is calculated over all ring torsion angles. If the average RMSD is greater than 60 degrees and the minimal RMSD between the ring in question and any Mogul-identified rings is also greater than 60 degrees, then that ring is considered an outlier. The outliers are highlighted in purple. The color gray indicates Mogul did not find sufficient equivalents in the CSD to analyse the geometry.



## 5.7 Other polymers [i](#)

There are no such residues in this entry.

## 5.8 Polymer linkage issues [i](#)

There are no chain breaks in this entry.

## 6 Fit of model and data [i](#)

### 6.1 Protein, DNA and RNA chains [i](#)

In the following table, the column labelled ‘#RSRZ> 2’ contains the number (and percentage) of RSRZ outliers, followed by percent RSRZ outliers for the chain as percentile scores relative to all X-ray entries and entries of similar resolution. The OWAB column contains the minimum, median, 95<sup>th</sup> percentile and maximum values of the occupancy-weighted average B-factor per residue. The column labelled ‘Q< 0.9’ lists the number of (and percentage) of residues with an average occupancy less than 0.9.

Mol	Chain	Analysed	<RSRZ>	#RSRZ>2	OWAB(Å <sup>2</sup> )	Q<0.9
1	A	556/557 (99%)	1.53	145 (26%) 0 0	41, 80, 173, 253	0
2	B	414/428 (96%)	1.42	106 (25%) 0 0	42, 70, 140, 287	0
All	All	970/985 (98%)	1.48	251 (25%) 0 0	41, 75, 162, 287	0

The worst 5 of 251 RSRZ outliers are listed below:

Mol	Chain	Res	Type	RSRZ
1	A	257	ILE	20.6
1	A	286	THR	16.2
1	A	221	HIS	13.8
1	A	292	VAL	13.0
2	B	4	PRO	13.0

### 6.2 Non-standard residues in protein, DNA, RNA chains [i](#)

There are no non-standard protein/DNA/RNA residues in this entry.

### 6.3 Carbohydrates [i](#)

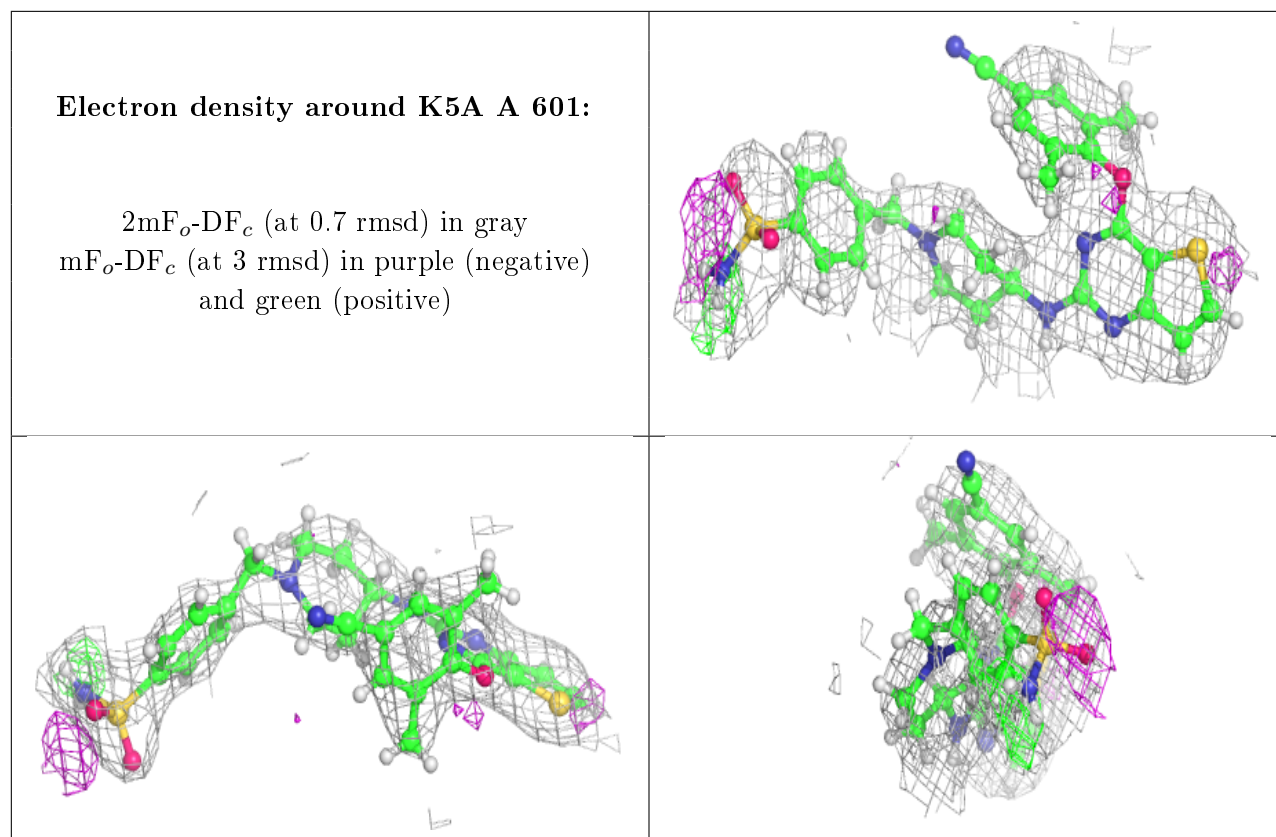
There are no monosaccharides in this entry.

### 6.4 Ligands [i](#)

In the following table, the Atoms column lists the number of modelled atoms in the group and the number defined in the chemical component dictionary. The B-factors column lists the minimum, median, 95<sup>th</sup> percentile and maximum values of B factors of atoms in the group. The column labelled ‘Q< 0.9’ lists the number of atoms with occupancy less than 0.9.

Mol	Type	Chain	Res	Atoms	RSCC	RSR	B-factors( $\text{\AA}^2$ )	Q<0.9
7	EDO	A	616	4/4	0.50	0.32	88,89,91,94	0
7	EDO	B	515	4/4	0.58	0.20	121,123,125,125	0
7	EDO	A	609	4/4	0.60	0.34	98,99,100,101	0
7	EDO	A	610	4/4	0.62	0.40	109,112,116,118	0
5	NA	A	603	1/1	0.65	0.66	125,125,125,125	0
6	SO4	B	501	5/5	0.70	0.28	211,211,211,211	0
7	EDO	A	614	4/4	0.73	0.41	97,102,108,111	0
6	SO4	A	606	5/5	0.76	0.18	148,148,149,151	0
7	EDO	A	611	4/4	0.76	0.13	76,79,81,85	0
7	EDO	B	513	4/4	0.77	0.29	93,96,96,96	0
7	EDO	B	511	4/4	0.78	0.51	83,85,87,88	0
7	EDO	A	613	4/4	0.78	0.27	106,107,107,109	0
7	EDO	B	507	4/4	0.78	0.20	93,94,96,98	0
7	EDO	A	615	4/4	0.78	0.23	92,93,97,100	0
7	EDO	B	508	4/4	0.80	0.20	85,87,88,91	0
7	EDO	B	509	4/4	0.81	0.34	73,75,78,83	0
7	EDO	B	510	4/4	0.81	0.19	83,89,96,100	0
6	SO4	B	504	5/5	0.82	0.24	156,156,157,157	0
7	EDO	A	617	4/4	0.82	0.60	109,110,111,113	0
7	EDO	A	612	4/4	0.85	0.19	94,95,95,97	0
7	EDO	B	514	4/4	0.86	0.51	132,132,133,133	0
4	MG	A	602	1/1	0.88	0.28	67,67,67,67	0
7	EDO	B	512	4/4	0.88	0.37	99,100,100,101	0
6	SO4	A	604	5/5	0.89	0.27	115,116,118,121	0
6	SO4	B	503	5/5	0.90	0.20	143,144,144,144	0
6	SO4	B	502	5/5	0.90	0.28	147,148,149,149	0
7	EDO	A	607	4/4	0.90	0.18	60,65,69,77	0
3	K5A	A	601	38/38	0.90	0.16	57,100,145,153	0
7	EDO	A	608	4/4	0.90	0.22	79,81,86,88	0
7	EDO	B	506	4/4	0.92	0.22	66,67,67,69	0
6	SO4	A	605	5/5	0.94	0.10	110,113,115,119	0
7	EDO	A	618	4/4	0.94	0.32	31,34,39,43	0
7	EDO	B	505	4/4	0.95	0.31	55,61,62,67	0

The following is a graphical depiction of the model fit to experimental electron density of all instances of the Ligand of Interest. In addition, ligands with molecular weight > 250 and outliers as shown on the geometry validation Tables will also be included. Each fit is shown from different orientation to approximate a three-dimensional view.



## 6.5 Other polymers [i](#)

There are no such residues in this entry.