



Full wwPDB X-ray Structure Validation Report ⓘ

May 15, 2020 – 05:09 am BST

PDB ID : 5CJU
Title : Isobutyryl-CoA mutase fused with bound adenosylcobalamin, GDP, Mg (holo-IcmF/GDP), and substrate n-butyryl-coenzyme A
Authors : Jost, M.; Drennan, C.L.
Deposited on : 2015-07-15
Resolution : 3.50 Å(reported)

This is a Full wwPDB X-ray Structure Validation Report for a publicly released PDB entry.

We welcome your comments at validation@mail.wwpdb.org

A user guide is available at

<https://www.wwpdb.org/validation/2017/XrayValidationReportHelp>

with specific help available everywhere you see the ⓘ symbol.

The following versions of software and data (see [references ⓘ](#)) were used in the production of this report:

MolProbity : 4.02b-467
Mogul : 1.8.5 (274361), CSD as541be (2020)
Xtriage (Phenix) : 1.13
EDS : 2.11
buster-report : 1.1.7 (2018)
Percentile statistics : 20191225.v01 (using entries in the PDB archive December 25th 2019)
Refmac : 5.8.0158
CCP4 : 7.0.044 (Gargrove)
Ideal geometry (proteins) : Engh & Huber (2001)
Ideal geometry (DNA, RNA) : Parkinson et al. (1996)
Validation Pipeline (wwPDB-VP) : 2.11

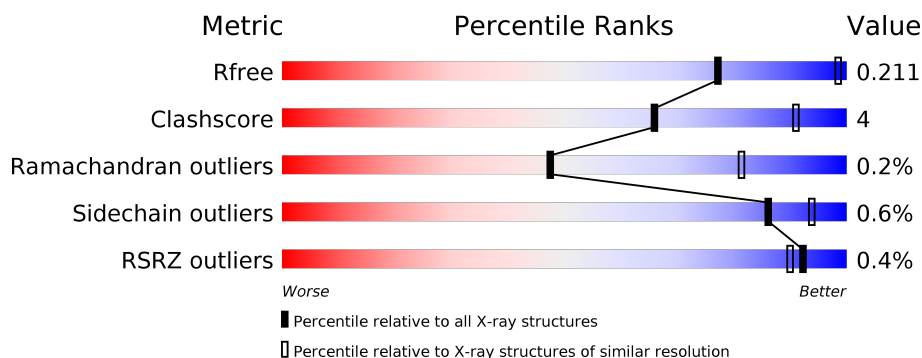
1 Overall quality at a glance

The following experimental techniques were used to determine the structure:

X-RAY DIFFRACTION



The reported resolution of this entry is 3.50 Å.

Percentile scores (ranging between 0-100) for global validation metrics of the entry are shown in the following graphic. The table shows the number of entries on which the scores are based.



Metric	Whole archive (#Entries)	Similar resolution (#Entries, resolution range(Å))
R_{free}	130704	1659 (3.60-3.40)
Clashscore	141614	1036 (3.58-3.42)
Ramachandran outliers	138981	1005 (3.58-3.42)
Sidechain outliers	138945	1006 (3.58-3.42)
RSRZ outliers	127900	1559 (3.60-3.40)

The table below summarises the geometric issues observed across the polymeric chains and their fit to the electron density. The red, orange, yellow and green segments on the lower bar indicate the fraction of residues that contain outliers for ≥ 3 , 2, 1 and 0 types of geometric quality criteria respectively. A grey segment represents the fraction of residues that are not modelled. The numeric value for each fraction is indicated below the corresponding segment, with a dot representing fractions $\leq 5\%$. The upper red bar (where present) indicates the fraction of residues that have poor fit to the electron density. The numeric value is given above the bar.

Mol	Chain	Length	Quality of chain
1	A	1113	 85% 10% 5%
1	B	1113	 85% 10% 5%

2 Entry composition

There are 6 unique types of molecules in this entry. The entry contains 16527 atoms, of which 0 are hydrogens and 0 are deuteriums.

In the tables below, the ZeroOcc column contains the number of atoms modelled with zero occupancy, the AltConf column contains the number of residues with at least one atom in alternate conformation and the Trace column contains the number of residues modelled with at most 2 atoms.

- Molecule 1 is a protein called Isobutyryl-CoA mutase fused.

Mol	Chain	Residues	Atoms					ZeroOcc	AltConf	Trace
1	A	1064	Total	C	N	O	S	0	0	0
			8111	5068	1455	1551	37			
1	B	1060	Total	C	N	O	S	0	0	0
			8058	5032	1445	1544	37			

There are 40 discrepancies between the modelled and reference sequences:

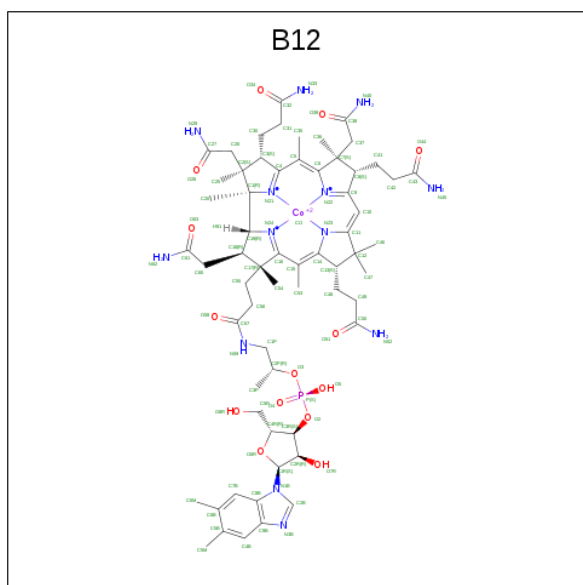
Chain	Residue	Modelled	Actual	Comment	Reference
A	-19	MET	-	initiating methionine	UNP Q1LRY0
A	-18	GLY	-	expression tag	UNP Q1LRY0
A	-17	SER	-	expression tag	UNP Q1LRY0
A	-16	SER	-	expression tag	UNP Q1LRY0
A	-15	HIS	-	expression tag	UNP Q1LRY0
A	-14	HIS	-	expression tag	UNP Q1LRY0
A	-13	HIS	-	expression tag	UNP Q1LRY0
A	-12	HIS	-	expression tag	UNP Q1LRY0
A	-11	HIS	-	expression tag	UNP Q1LRY0
A	-10	HIS	-	expression tag	UNP Q1LRY0
A	-9	SER	-	expression tag	UNP Q1LRY0
A	-8	SER	-	expression tag	UNP Q1LRY0
A	-7	GLY	-	expression tag	UNP Q1LRY0
A	-6	LEU	-	expression tag	UNP Q1LRY0
A	-5	VAL	-	expression tag	UNP Q1LRY0
A	-4	PRO	-	expression tag	UNP Q1LRY0
A	-3	ARG	-	expression tag	UNP Q1LRY0
A	-2	GLY	-	expression tag	UNP Q1LRY0
A	-1	SER	-	expression tag	UNP Q1LRY0
A	0	HIS	-	expression tag	UNP Q1LRY0
B	-19	MET	-	initiating methionine	UNP Q1LRY0
B	-18	GLY	-	expression tag	UNP Q1LRY0
B	-17	SER	-	expression tag	UNP Q1LRY0
B	-16	SER	-	expression tag	UNP Q1LRY0
B	-15	HIS	-	expression tag	UNP Q1LRY0

Continued on next page...

Continued from previous page...

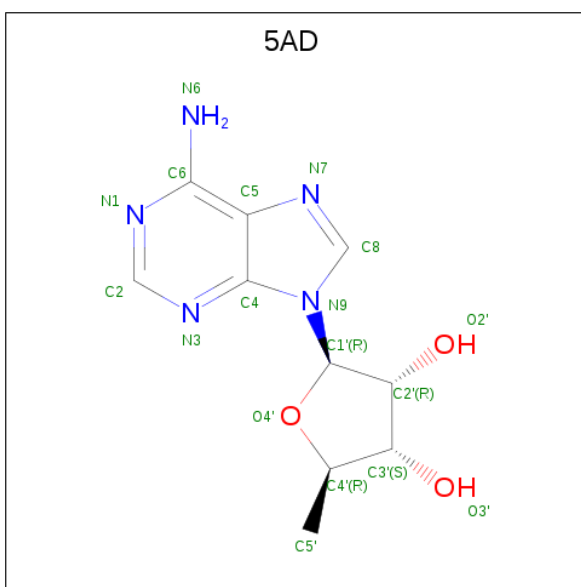
Chain	Residue	Modelled	Actual	Comment	Reference
B	-14	HIS	-	expression tag	UNP Q1LRY0
B	-13	HIS	-	expression tag	UNP Q1LRY0
B	-12	HIS	-	expression tag	UNP Q1LRY0
B	-11	HIS	-	expression tag	UNP Q1LRY0
B	-10	HIS	-	expression tag	UNP Q1LRY0
B	-9	SER	-	expression tag	UNP Q1LRY0
B	-8	SER	-	expression tag	UNP Q1LRY0
B	-7	GLY	-	expression tag	UNP Q1LRY0
B	-6	LEU	-	expression tag	UNP Q1LRY0
B	-5	VAL	-	expression tag	UNP Q1LRY0
B	-4	PRO	-	expression tag	UNP Q1LRY0
B	-3	ARG	-	expression tag	UNP Q1LRY0
B	-2	GLY	-	expression tag	UNP Q1LRY0
B	-1	SER	-	expression tag	UNP Q1LRY0
B	0	HIS	-	expression tag	UNP Q1LRY0

- Molecule 2 is COBALAMIN (three-letter code: B12) (formula: $C_{62}H_{89}CoN_{13}O_{14}P$).



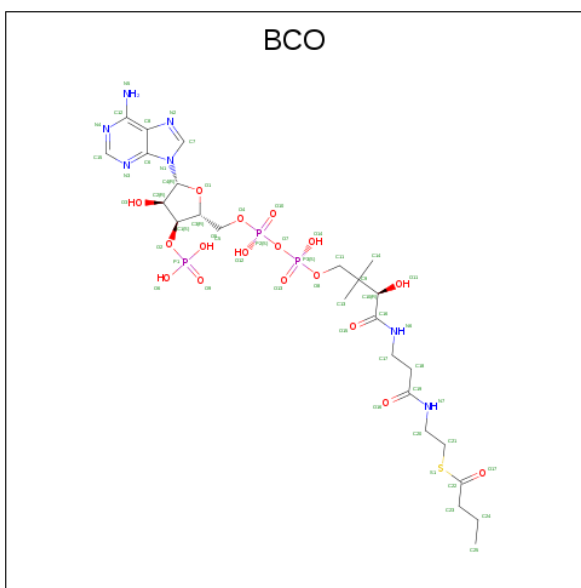
Mol	Chain	Residues	Atoms						ZeroOcc	AltConf
2	A	1	Total	C	Co	N	O	P	0	0
			91	62	1	13	14	1		
2	B	1	Total	C	Co	N	O	P	0	0
			91	62	1	13	14	1		

- Molecule 3 is 5'-DEOXYADENOSINE (three-letter code: 5AD) (formula: $C_{10}H_{13}N_5O_3$).



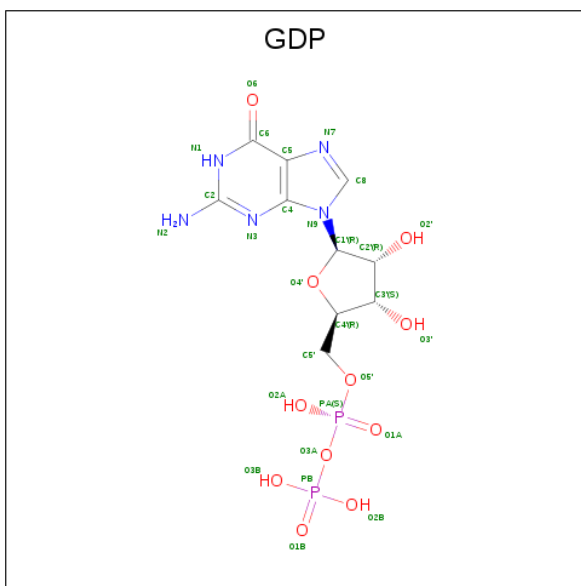
Mol	Chain	Residues	Atoms				ZeroOcc	AltConf
3	A	1	Total	C	N	O	0	1
			36	20	10	6		

- Molecule 4 is Butyryl Coenzyme A (three-letter code: BCO) (formula: $\text{C}_{25}\text{H}_{42}\text{N}_7\text{O}_{17}\text{P}_3\text{S}$).



Mol	Chain	Residues	Atoms						ZeroOcc	AltConf
4	A	1	Total 53	C 25	N 7	O 17	P 3	S 1	0	0
4	B	1	Total 27	C 10	N 5	O 10	P 2		0	0

- Molecule 5 is GUANOSINE-5'-DIPHOSPHATE (three-letter code: GDP) (formula:

$$\text{C}_{10}\text{H}_{15}\text{N}_5\text{O}_{11}\text{P}_2).$$


Mol	Chain	Residues	Atoms					ZeroOcc	AltConf
5	A	1	Total 28	C 10	N 5	O 11	P 2	0	0
5	B	1	Total 28	C 10	N 5	O 11	P 2	0	0

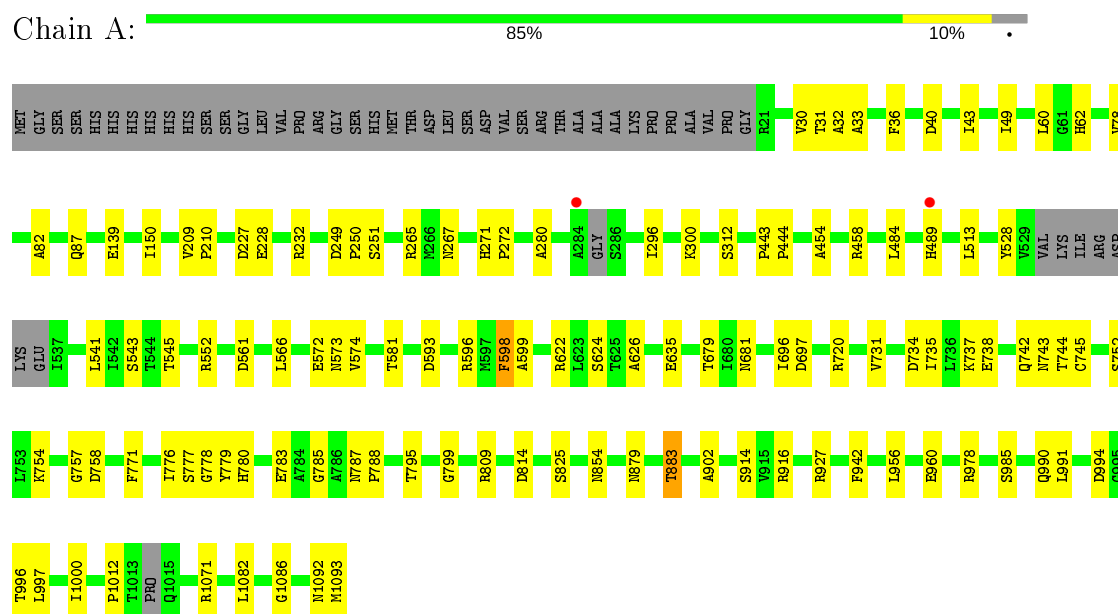
- Molecule 6 is MAGNESIUM ION (three-letter code: MG) (formula: Mg).

Mol	Chain	Residues	Atoms	ZeroOcc	AltConf
6	B	2	Total Mg 2 2	0	0
6	A	2	Total Mg 2 2	0	0

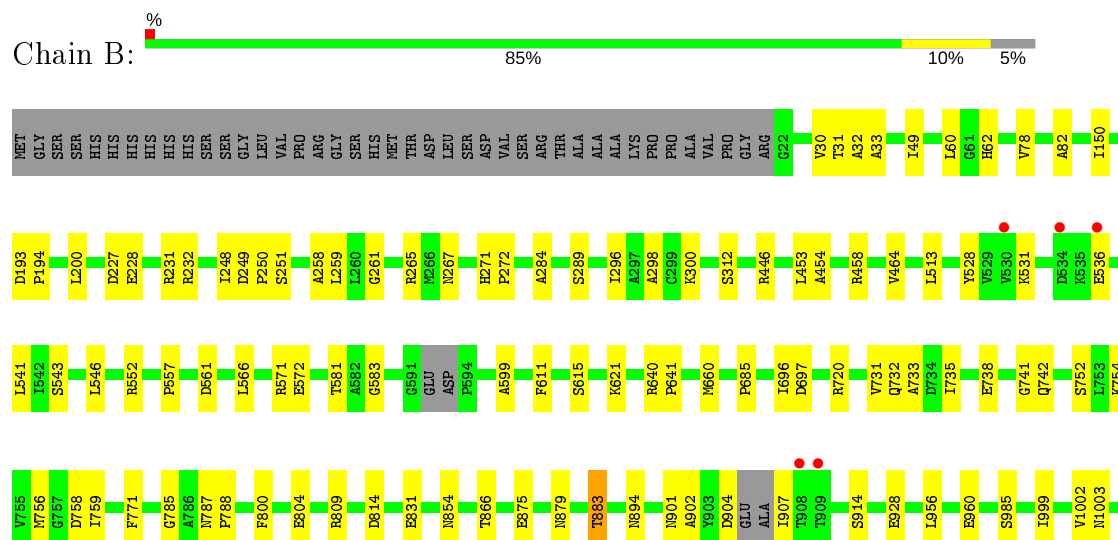
3 Residue-property plots

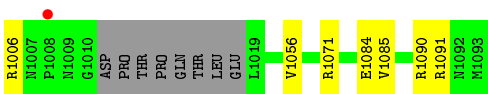
These plots are drawn for all protein, RNA and DNA chains in the entry. The first graphic for a chain summarises the proportions of the various outlier classes displayed in the second graphic. The second graphic shows the sequence view annotated by issues in geometry and electron density. Residues are color-coded according to the number of geometric quality criteria for which they contain at least one outlier: green = 0, yellow = 1, orange = 2 and red = 3 or more. A red dot above a residue indicates a poor fit to the electron density ($RSRZ > 2$). Stretches of 2 or more consecutive residues without any outlier are shown as a green connector. Residues present in the sample, but not in the model, are shown in grey.

• Molecule 1: Isobutyryl-CoA mutase fused



• Molecule 1: Isobutyryl-CoA mutase fused





4 Data and refinement statistics

Property	Value	Source
Space group	H 3 2	Depositor
Cell constants a, b, c, α , β , γ	316.76 Å 316.76 Å 342.67 Å 90.00° 90.00° 120.00°	Depositor
Resolution (Å)	34.82 – 3.50 34.82 – 3.50	Depositor EDS
% Data completeness (in resolution range)	98.5 (34.82-3.50) 98.6 (34.82-3.50)	Depositor EDS
R_{merge}	(Not available)	Depositor
R_{sym}	0.15	Depositor
$\langle I/\sigma(I) \rangle$ ¹	1.75 (at 3.47 Å)	Xtriage
Refinement program	PHENIX 1.9_1692	Depositor
R, R_{free}	0.185 , 0.209 0.189 , 0.211	Depositor DCC
R_{free} test set	4120 reflections (5.05%)	wwPDB-VP
Wilson B-factor (Å ²)	98.5	Xtriage
Anisotropy	0.217	Xtriage
Bulk solvent k_{sol} (e/Å ³), B_{sol} (Å ²)	0.32 , 64.3	EDS
L-test for twinning ²	$\langle L \rangle = 0.49$, $\langle L^2 \rangle = 0.32$	Xtriage
Estimated twinning fraction	No twinning to report.	Xtriage
F_o, F_c correlation	0.94	EDS
Total number of atoms	16527	wwPDB-VP
Average B, all atoms (Å ²)	98.0	wwPDB-VP

Xtriage's analysis on translational NCS is as follows: *The largest off-origin peak in the Patterson function is 2.18% of the height of the origin peak. No significant pseudotranslation is detected.*

¹Intensities estimated from amplitudes.

²Theoretical values of $\langle |L| \rangle$, $\langle L^2 \rangle$ for acentric reflections are 0.5, 0.333 respectively for untwinned datasets, and 0.375, 0.2 for perfectly twinned datasets.

5 Model quality

5.1 Standard geometry

Bond lengths and bond angles in the following residue types are not validated in this section: GDP, MG, BCO, B12, 5AD

The Z score for a bond length (or angle) is the number of standard deviations the observed value is removed from the expected value. A bond length (or angle) with $|Z| > 5$ is considered an outlier worth inspection. RMSZ is the root-mean-square of all Z scores of the bond lengths (or angles).

Mol	Chain	Bond lengths		Bond angles	
		RMSZ	# Z >5	RMSZ	# Z >5
1	A	0.21	0/8253	0.40	3/11182 (0.0%)
1	B	0.22	0/8196	0.40	2/11097 (0.0%)
All	All	0.22	0/16449	0.40	5/22279 (0.0%)

There are no bond length outliers.

All (5) bond angle outliers are listed below:

Mol	Chain	Res	Type	Atoms	Z	Observed(°)	Ideal(°)
1	A	552	ARG	NE-CZ-NH2	-10.44	115.08	120.30
1	A	552	ARG	NE-CZ-NH1	10.14	125.37	120.30
1	B	552	ARG	NE-CZ-NH1	-10.13	115.23	120.30
1	B	552	ARG	NE-CZ-NH2	10.06	125.33	120.30
1	A	552	ARG	CD-NE-CZ	5.06	130.68	123.60

There are no chirality outliers.

There are no planarity outliers.

5.2 Too-close contacts

In the following table, the Non-H and H(model) columns list the number of non-hydrogen atoms and hydrogen atoms in the chain respectively. The H(added) column lists the number of hydrogen atoms added and optimized by MolProbity. The Clashes column lists the number of clashes within the asymmetric unit, whereas Symm-Clashes lists symmetry related clashes.

Mol	Chain	Non-H	H(model)	H(added)	Clashes	Symm-Clashes
1	A	8111	0	7848	68	0
1	B	8058	0	7783	59	0
2	A	91	0	88	7	0
2	B	91	0	88	3	0

Continued on next page...

Continued from previous page...

Mol	Chain	Non-H	H(model)	H(added)	Clashes	Symm-Clashes
3	A	36	0	26	2	0
4	A	53	0	40	2	0
4	B	27	0	13	0	0
5	A	28	0	12	1	0
5	B	28	0	12	1	0
6	A	2	0	0	0	0
6	B	2	0	0	0	0
All	All	16527	0	15910	128	0

The all-atom clashscore is defined as the number of clashes found per 1000 atoms (including hydrogen atoms). The all-atom clashscore for this structure is 4.

All (128) close contacts within the same asymmetric unit are listed below, sorted by their clash magnitude.

Atom-1	Atom-2	Interatomic distance (Å)	Clash overlap (Å)
1:A:87:GLN:HE22	2:A:1101:B12:H421	1.43	0.84
1:A:783:GLU:HB3	2:A:1101:B12:H532	1.65	0.77
1:B:615:SER:O	1:B:621:LYS:NZ	2.23	0.72
1:B:454:ALA:HA	1:B:956:LEU:HD22	1.73	0.70
1:A:779:TYR:OH	3:A:1102[B]:5AD:O3'	2.10	0.69
1:A:593:ASP:OD2	1:A:927:ARG:NH2	2.30	0.64
1:A:31:THR:HG22	1:A:82:ALA:HB3	1.81	0.62
1:B:1002:VAL:O	1:B:1006:ARG:NH1	2.33	0.61
1:A:735:ILE:HG13	1:A:752:SER:HB3	1.83	0.60
1:B:31:THR:HG22	1:B:82:ALA:HB3	1.83	0.59
1:A:561:ASP:HB2	1:B:561:ASP:HB2	1.86	0.58
1:A:916:ARG:NH1	1:B:875:GLU:OE2	2.37	0.57
1:A:990:GLN:O	1:A:994:ASP:HB2	2.04	0.56
1:A:978:ARG:NE	1:A:1093:MET:OXT	2.37	0.55
1:A:572:GLU:HG2	1:A:581:THR:HG21	1.89	0.55
1:B:572:GLU:HG2	1:B:581:THR:HG21	1.89	0.55
1:A:528:TYR:HB2	1:A:541:LEU:HD21	1.89	0.55
1:B:33:ALA:HB3	1:B:62:HIS:HA	1.89	0.54
1:B:528:TYR:HB2	1:B:541:LEU:HD21	1.89	0.54
1:A:991:LEU:HD22	1:A:996:THR:HB	1.89	0.54
1:B:228:GLU:OE1	1:B:232:ARG:NH1	2.41	0.54
1:A:780:HIS:HA	2:A:1101:B12:H461	1.89	0.54
1:A:681:ASN:ND2	1:A:742:GLN:OE1	2.42	0.53
1:A:1082:LEU:O	1:A:1086:GLY:N	2.40	0.53
1:A:33:ALA:HB3	1:A:62:HIS:HA	1.89	0.53
1:A:679:THR:HG21	4:A:1103:BCO:H37	1.90	0.52

Continued on next page...

Continued from previous page...

Atom-1	Atom-2	Interatomic distance (Å)	Clash overlap (Å)
1:A:228:GLU:OE1	1:A:232:ARG:NH1	2.41	0.52
1:A:942:PHE:CZ	1:B:557:PRO:HB3	2.45	0.52
1:B:251:SER:HB3	1:B:258:ALA:HB2	1.92	0.52
1:A:596:ARG:HG2	1:A:624:SER:HB2	1.93	0.51
1:A:622:ARG:NH1	4:A:1103:BCO:O13	2.37	0.51
1:A:250:PRO:HD3	1:A:312:SER:HB2	1.93	0.51
1:A:32:ALA:HB2	1:A:60:LEU:HB2	1.93	0.50
1:B:904:ASP:O	1:B:907:ILE:N	2.44	0.50
2:A:1101:B12:H261	3:A:1102[A]:5AD:H3'	1.94	0.50
1:A:49:ILE:HB	1:A:150:ILE:HG13	1.93	0.50
1:B:32:ALA:HB2	1:B:60:LEU:HB2	1.94	0.50
1:A:30:VAL:HG23	1:A:78:VAL:HG11	1.94	0.49
1:A:265:ARG:NH1	5:A:1104:GDP:O1A	2.45	0.49
1:B:30:VAL:HG23	1:B:78:VAL:HG11	1.94	0.49
1:A:814:ASP:CG	1:A:854:ASN:HD22	2.16	0.49
1:A:879:ASN:O	1:A:883:THR:OG1	2.28	0.49
1:A:40:ASP:OD2	1:A:978:ARG:NH1	2.46	0.49
1:A:62:HIS:CE1	1:A:743:ASN:HB3	2.48	0.49
1:A:779:TYR:CD2	1:A:825:SER:HB2	2.48	0.48
1:A:458:ARG:NH1	1:A:960:GLU:OE2	2.37	0.48
1:B:265:ARG:NH1	5:B:1103:GDP:O2A	2.46	0.48
1:B:250:PRO:HD3	1:B:312:SER:HB2	1.95	0.48
1:A:785:GLY:HA3	1:A:985:SER:HB2	1.95	0.48
1:A:757:GLY:HA3	1:A:809:ARG:NH2	2.28	0.48
1:B:267:ASN:HD21	1:B:1090:ARG:HA	1.79	0.48
1:A:296:ILE:O	1:A:300:LYS:HG3	2.13	0.48
1:A:454:ALA:HA	1:A:956:LEU:HD22	1.95	0.48
1:B:731:VAL:O	1:B:733:ALA:N	2.46	0.48
1:B:785:GLY:HA3	1:B:985:SER:HB2	1.95	0.48
1:A:251:SER:HB2	1:A:280:ALA:HB1	1.96	0.48
1:B:49:ILE:HB	1:B:150:ILE:HG13	1.93	0.48
1:B:296:ILE:O	1:B:300:LYS:HG3	2.13	0.48
1:A:737:LYS:HE3	1:A:780:HIS:CE1	2.49	0.48
1:B:248:ILE:HD13	1:B:289:SER:H	1.78	0.48
1:A:902:ALA:HB1	1:A:914:SER:OG	2.14	0.47
1:B:879:ASN:O	1:B:883:THR:OG1	2.28	0.47
2:A:1101:B12:H552	2:A:1101:B12:H531	1.96	0.47
1:B:446:ARG:NH2	1:B:804:GLU:OE2	2.46	0.47
2:B:1101:B12:H531	2:B:1101:B12:H552	1.95	0.47
1:B:531:LYS:HA	1:B:536:GLU:HA	1.95	0.47
1:B:814:ASP:CG	1:B:854:ASN:HD22	2.17	0.47

Continued on next page...

Continued from previous page...

Atom-1	Atom-2	Interatomic distance (Å)	Clash overlap (Å)
1:B:735:ILE:HD12	1:B:752:SER:HB3	1.95	0.47
1:B:738:GLU:OE2	1:B:742:GLN:NE2	2.47	0.47
1:B:902:ALA:HB1	1:B:914:SER:OG	2.15	0.47
1:A:787:ASN:HB2	1:A:788:PRO:HD2	1.96	0.46
1:A:734:ASP:HB3	1:A:737:LYS:HZ2	1.81	0.46
2:A:1101:B12:H252	2:A:1101:B12:H601	1.98	0.46
1:B:787:ASN:HB2	1:B:788:PRO:HD2	1.97	0.46
1:A:40:ASP:HA	1:A:43:ILE:HG22	1.98	0.45
2:B:1101:B12:H481	2:B:1101:B12:H473	1.79	0.45
1:B:731:VAL:HG23	1:B:771:PHE:CE1	2.52	0.45
1:B:731:VAL:HG23	1:B:771:PHE:HE1	1.82	0.44
2:A:1101:B12:H541	2:A:1101:B12:H621	1.82	0.44
1:B:200:LEU:HD11	1:B:298:ALA:HA	1.99	0.44
1:A:139:GLU:HG3	1:A:1012:PRO:HG3	2.00	0.44
1:B:231:ARG:NH1	1:B:1084:GLU:HA	2.34	0.43
1:A:697:ASP:OD1	1:A:1071:ARG:NH1	2.52	0.43
1:A:738:GLU:HB3	1:A:745:CYS:HB2	2.01	0.43
1:A:776:ILE:HD13	1:A:799:GLY:HA2	1.99	0.43
1:B:599:ALA:HB3	1:B:611:PHE:CE1	2.54	0.43
1:A:598:PHE:HA	1:A:624:SER:HB3	2.00	0.43
1:B:697:ASP:OD1	1:B:1071:ARG:NH1	2.52	0.43
1:A:997:LEU:HD22	1:B:546:LEU:HD11	2.01	0.43
1:B:660:MET:HE2	1:B:660:MET:HB2	1.91	0.43
1:B:193:ASP:HA	1:B:194:PRO:HD3	1.94	0.42
1:B:866:THR:O	1:B:901:ASN:ND2	2.52	0.42
1:A:778:GLY:HA3	1:A:795:THR:OG1	2.19	0.42
1:B:513:LEU:HD21	1:B:566:LEU:HB2	2.00	0.42
1:B:754:LYS:NZ	1:B:758:ASP:OD2	2.51	0.42
1:A:545:THR:OG1	1:B:831:GLU:OE1	2.29	0.42
1:A:513:LEU:HD21	1:A:566:LEU:HB2	2.00	0.42
1:B:583:GLY:HA3	1:B:894:ASN:HD22	1.84	0.42
1:B:1056:VAL:HB	1:B:1085:VAL:HG21	2.02	0.42
1:B:271:HIS:CG	1:B:272:PRO:HD2	2.55	0.42
1:A:227:ASP:OD1	1:A:267:ASN:N	2.52	0.42
1:A:271:HIS:CG	1:A:272:PRO:HD2	2.55	0.42
1:A:735:ILE:HA	1:A:738:GLU:HG2	2.02	0.41
1:A:737:LYS:HD3	1:A:777:SER:HB2	2.01	0.41
1:B:453:LEU:HD13	1:B:800:PHE:CD2	2.55	0.41
1:A:731:VAL:HG12	1:A:771:PHE:HE1	1.86	0.41
1:B:227:ASP:OD1	1:B:267:ASN:N	2.51	0.41
1:A:696:ILE:HD13	1:A:720:ARG:HG3	2.01	0.41

Continued on next page...

Continued from previous page...

Atom-1	Atom-2	Interatomic distance (Å)	Clash overlap (Å)
1:B:685:PRO:HB3	1:B:759:ILE:HD11	2.02	0.41
1:A:599:ALA:O	1:A:626:ALA:N	2.43	0.41
1:A:734:ASP:O	1:A:737:LYS:HG2	2.20	0.41
1:B:464:VAL:HG11	1:B:571:ARG:HG3	2.02	0.41
1:A:443:PRO:HA	1:A:444:PRO:HD3	1.88	0.41
1:B:259:LEU:O	1:B:261:GLY:N	2.53	0.41
1:A:1000:ILE:N	1:B:928:GLU:OE2	2.42	0.41
1:A:209:VAL:HA	1:A:210:PRO:HD3	1.89	0.41
1:A:484:LEU:HB3	1:A:489:HIS:O	2.20	0.41
1:A:737:LYS:CD	1:A:777:SER:HB2	2.51	0.41
2:B:1101:B12:H353	2:B:1101:B12:H311	2.03	0.41
1:B:458:ARG:NH1	1:B:960:GLU:OE2	2.43	0.40
1:B:696:ILE:HD13	1:B:720:ARG:HG3	2.03	0.40
1:A:573:ASN:OD1	1:A:574:VAL:N	2.53	0.40
1:A:36:PHE:CZ	1:A:635:GLU:HG3	2.57	0.40
1:A:754:LYS:NZ	1:A:758:ASP:OD2	2.50	0.40
1:B:999:ILE:N	1:B:1003:ASN:OD1	2.53	0.40
1:B:640:ARG:HA	1:B:641:PRO:HD3	1.91	0.40
1:B:758:ASP:OD1	1:B:809:ARG:NH1	2.46	0.40
1:B:731:VAL:HG12	1:B:733:ALA:HB2	2.03	0.40

There are no symmetry-related clashes.

5.3 Torsion angles [i](#)

5.3.1 Protein backbone [i](#)

In the following table, the Percentiles column shows the percent Ramachandran outliers of the chain as a percentile score with respect to all X-ray entries followed by that with respect to entries of similar resolution.

The Analysed column shows the number of residues for which the backbone conformation was analysed, and the total number of residues.

Mol	Chain	Analysed	Favoured	Allowed	Outliers	Percentiles	
1	A	1056/1113 (95%)	1013 (96%)	43 (4%)	0	100	100
1	B	1052/1113 (94%)	1015 (96%)	33 (3%)	4 (0%)	34	72
All	All	2108/2226 (95%)	2028 (96%)	76 (4%)	4 (0%)	47	81

All (4) Ramachandran outliers are listed below:

Mol	Chain	Res	Type
1	B	732	GLN
1	B	1091	ARG
1	B	284	ALA
1	B	741	GLY

5.3.2 Protein sidechains ⓘ

In the following table, the Percentiles column shows the percent sidechain outliers of the chain as a percentile score with respect to all X-ray entries followed by that with respect to entries of similar resolution.

The Analysed column shows the number of residues for which the sidechain conformation was analysed, and the total number of residues.

Mol	Chain	Analysed	Rotameric	Outliers	Percentiles	
1	A	824/906 (91%)	818 (99%)	6 (1%)	84	93
1	B	814/906 (90%)	810 (100%)	4 (0%)	88	94
All	All	1638/1812 (90%)	1628 (99%)	10 (1%)	86	94

All (10) residues with a non-rotameric sidechain are listed below:

Mol	Chain	Res	Type
1	A	249	ASP
1	A	543	SER
1	A	598	PHE
1	A	744	THR
1	A	883	THR
1	A	1092	ASN
1	B	249	ASP
1	B	543	SER
1	B	756	MET
1	B	883	THR

Some sidechains can be flipped to improve hydrogen bonding and reduce clashes. All (2) such sidechains are listed below:

Mol	Chain	Res	Type
1	B	267	ASN
1	B	899	HIS

5.3.3 RNA ⓘ

There are no RNA molecules in this entry.

5.4 Non-standard residues in protein, DNA, RNA chains ⓘ

There are no non-standard protein/DNA/RNA residues in this entry.

5.5 Carbohydrates ⓘ

There are no carbohydrates in this entry.

5.6 Ligand geometry ⓘ

Of 12 ligands modelled in this entry, 4 are monoatomic - leaving 8 for Mogul analysis.

In the following table, the Counts columns list the number of bonds (or angles) for which Mogul statistics could be retrieved, the number of bonds (or angles) that are observed in the model and the number of bonds (or angles) that are defined in the Chemical Component Dictionary. The Link column lists molecule types, if any, to which the group is linked. The Z score for a bond length (or angle) is the number of standard deviations the observed value is removed from the expected value. A bond length (or angle) with $|Z| > 2$ is considered an outlier worth inspection. RMSZ is the root-mean-square of all Z scores of the bond lengths (or angles).

Mol	Type	Chain	Res	Link	Bond lengths			Bond angles		
					Counts	RMSZ	# $ Z > 2$	Counts	RMSZ	# $ Z > 2$
2	B12	A	1101	1,3	80,101,101	0.66	2 (2%)	101,166,166	1.14	10 (9%)
2	B12	B	1101	1	80,101,101	0.65	2 (2%)	101,166,166	1.10	8 (7%)
3	5AD	A	1102[A]	-	17,20,20	0.67	0	15,30,30	0.81	1 (6%)
4	BCO	B	1102	-	26,29,55	0.81	0	31,45,81	0.88	2 (6%)
3	5AD	A	1102[B]	2	17,20,20	0.64	0	15,30,30	0.80	1 (6%)
5	GDP	A	1104	6	24,30,30	2.60	10 (41%)	31,47,47	1.67	6 (19%)
4	BCO	A	1103	-	47,55,55	0.54	0	58,81,81	0.55	1 (1%)
5	GDP	B	1103	6	24,30,30	2.62	10 (41%)	31,47,47	1.69	6 (19%)

In the following table, the Chirals column lists the number of chiral outliers, the number of chiral centers analysed, the number of these observed in the model and the number defined in the Chemical Component Dictionary. Similar counts are reported in the Torsion and Rings columns. '-' means no outliers of that kind were identified.

Mol	Type	Chain	Res	Link	Chirals	Torsions	Rings
2	B12	A	1101	1,3	-	15/51/223/223	0/3/11/11
2	B12	B	1101	1	-	16/51/223/223	0/3/11/11
3	5AD	A	1102[A]	-	-	0/0/20/20	0/3/3/3
4	BCO	B	1102	-	-	3/11/31/70	0/3/3/3
3	5AD	A	1102[B]	2	-	0/0/20/20	0/3/3/3
5	GDP	A	1104	6	-	0/12/32/32	0/3/3/3
4	BCO	A	1103	-	-	16/50/70/70	0/3/3/3
5	GDP	B	1103	6	-	0/12/32/32	0/3/3/3

All (24) bond length outliers are listed below:

Mol	Chain	Res	Type	Atoms	Z	Observed(Å)	Ideal(Å)
5	A	1104	GDP	C2-N2	7.25	1.48	1.33
5	B	1103	GDP	C2-N2	7.24	1.48	1.33
5	B	1103	GDP	O6-C6	4.96	1.37	1.24
5	A	1104	GDP	O6-C6	4.94	1.37	1.24
5	A	1104	GDP	C2-N1	-3.98	1.28	1.35
5	B	1103	GDP	C2-N1	-3.92	1.28	1.35
5	A	1104	GDP	O5'-C5'	-3.91	1.29	1.44
5	B	1103	GDP	O5'-C5'	-3.89	1.29	1.44
5	B	1103	GDP	C2'-C1'	-3.34	1.48	1.53
2	B	1101	B12	C16-C15	3.26	1.53	1.41
5	A	1104	GDP	C2'-C1'	-3.19	1.48	1.53
5	A	1104	GDP	C5-C4	-2.96	1.33	1.40
5	B	1103	GDP	C5-C4	-2.95	1.33	1.40
2	A	1101	B12	C16-C15	2.91	1.52	1.41
5	B	1103	GDP	C2'-C3'	-2.76	1.45	1.53
5	B	1103	GDP	PA-O2A	-2.66	1.42	1.55
5	A	1104	GDP	C2'-C3'	-2.64	1.46	1.53
2	A	1101	B12	C1P-C2P	2.35	1.57	1.51
2	B	1101	B12	C1P-C2P	2.25	1.57	1.51
5	A	1104	GDP	PA-O1A	-2.23	1.43	1.50
5	B	1103	GDP	PB-O3B	-2.18	1.46	1.54
5	A	1104	GDP	PB-O3B	-2.13	1.46	1.54
5	B	1103	GDP	C6-C5	2.09	1.45	1.41
5	A	1104	GDP	C6-C5	2.03	1.44	1.41

All (35) bond angle outliers are listed below:

Mol	Chain	Res	Type	Atoms	Z	Observed(°)	Ideal(°)
5	B	1103	GDP	C2-N3-C4	4.36	120.34	115.36
5	A	1104	GDP	C2-N3-C4	4.36	120.34	115.36

Continued on next page...

Continued from previous page...

Mol	Chain	Res	Type	Atoms	Z	Observed(°)	Ideal(°)
5	B	1103	GDP	N3-C2-N1	-4.21	121.60	127.22
5	A	1104	GDP	N3-C2-N1	-4.19	121.63	127.22
2	A	1101	B12	C19-C1-N21	3.49	105.74	102.16
2	A	1101	B12	C30-C3-C2	-3.47	111.78	119.13
2	A	1101	B12	C55-C17-C16	3.39	121.21	109.92
5	B	1103	GDP	PA-O3A-PB	-3.12	122.14	132.83
5	A	1104	GDP	PA-O3A-PB	-3.10	122.20	132.83
2	B	1101	B12	C30-C3-C2	-2.99	112.80	119.13
2	B	1101	B12	C55-C17-C16	2.94	119.73	109.92
5	B	1103	GDP	C6-C5-C4	-2.75	118.17	120.80
5	A	1104	GDP	C6-C5-C4	-2.74	118.18	120.80
5	B	1103	GDP	C5-C6-N1	-2.73	119.70	123.43
5	B	1103	GDP	C6-N1-C2	2.71	120.23	115.93
2	A	1101	B12	C2-C1-C19	-2.71	114.33	118.60
5	A	1104	GDP	C5-C6-N1	-2.69	119.76	123.43
4	B	1102	BCO	O12-P2-O4	2.68	113.87	106.73
5	A	1104	GDP	C6-N1-C2	2.67	120.17	115.93
2	A	1101	B12	C3-C4-C5	-2.56	122.40	131.68
2	A	1101	B12	C13-C14-C15	-2.51	122.58	131.68
2	B	1101	B12	C13-C14-C15	-2.49	122.64	131.68
2	B	1101	B12	C3-C4-C5	-2.48	122.68	131.68
2	B	1101	B12	C16-C15-C14	-2.46	120.44	124.27
2	B	1101	B12	C55-C17-C18	-2.39	106.53	111.14
2	A	1101	B12	C16-C15-C14	-2.37	120.58	124.27
4	A	1103	BCO	C8-C12-N5	2.31	123.86	120.35
4	B	1102	BCO	C8-C12-N5	2.30	123.84	120.35
3	A	1102[A]	5AD	C5-C6-N6	2.29	123.83	120.35
3	A	1102[B]	5AD	C5-C6-N6	2.26	123.79	120.35
2	A	1101	B12	C5-C6-N22	-2.22	120.75	124.81
2	A	1101	B12	C8-C9-N22	2.22	113.89	111.12
2	A	1101	B12	C15-C14-N23	2.08	128.15	124.64
2	B	1101	B12	C20-C1-C19	-2.07	107.36	109.36
2	B	1101	B12	C15-C14-N23	2.04	128.09	124.64

There are no chirality outliers.

All (50) torsion outliers are listed below:

Mol	Chain	Res	Type	Atoms
2	A	1101	B12	C18-C60-C61-N62
2	A	1101	B12	C1P-C2P-O3-P
2	A	1101	B12	C3P-C2P-O3-P
2	B	1101	B12	C2-C3-C30-C31

Continued on next page...

Continued from previous page...

Mol	Chain	Res	Type	Atoms
2	B	1101	B12	C18-C60-C61-N62
4	B	1102	BCO	C5-O4-P2-O12
4	B	1102	BCO	C5-O4-P2-O7
4	A	1103	BCO	C1-O2-P1-O9
4	A	1103	BCO	C5-O4-P2-O12
4	A	1103	BCO	C5-O4-P2-O10
4	A	1103	BCO	C11-O8-P3-O14
4	A	1103	BCO	C11-O8-P3-O13
4	A	1103	BCO	C20-C21-S1-C22
4	A	1103	BCO	C2-C1-O2-P1
2	A	1101	B12	C2-C3-C30-C31
4	A	1103	BCO	C3-C1-O2-P1
2	B	1101	B12	C12-C13-C48-C49
2	A	1101	B12	C12-C13-C48-C49
2	A	1101	B12	C18-C60-C61-O63
4	B	1102	BCO	C5-O4-P2-O10
2	B	1101	B12	C3R-O2-P-O3
2	B	1101	B12	C18-C60-C61-O63
2	B	1101	B12	C38-C37-C7-C36
4	A	1103	BCO	C1-O2-P1-O5
4	A	1103	BCO	C5-O4-P2-O7
4	A	1103	BCO	C11-O8-P3-O7
2	A	1101	B12	C42-C41-C8-C9
2	A	1101	B12	C14-C13-C48-C49
2	B	1101	B12	C42-C41-C8-C9
2	B	1101	B12	C14-C13-C48-C49
2	A	1101	B12	C30-C31-C32-O34
2	B	1101	B12	C30-C31-C32-O34
2	B	1101	B12	C38-C37-C7-C8
2	A	1101	B12	C3R-O2-P-O3
4	A	1103	BCO	P3-O7-P2-O10
2	A	1101	B12	C30-C31-C32-N33
2	A	1101	B12	C55-C56-C57-O58
4	A	1103	BCO	O8-C11-C9-C13
2	B	1101	B12	C30-C31-C32-N33
2	A	1101	B12	C55-C56-C57-N59
2	A	1101	B12	N59-C1P-C2P-O3
4	A	1103	BCO	P2-O7-P3-O14
4	A	1103	BCO	P2-O7-P3-O13
2	B	1101	B12	C42-C41-C8-C7
2	B	1101	B12	C55-C56-C57-O58
2	B	1101	B12	C41-C42-C43-N45

Continued on next page...

Continued from previous page...

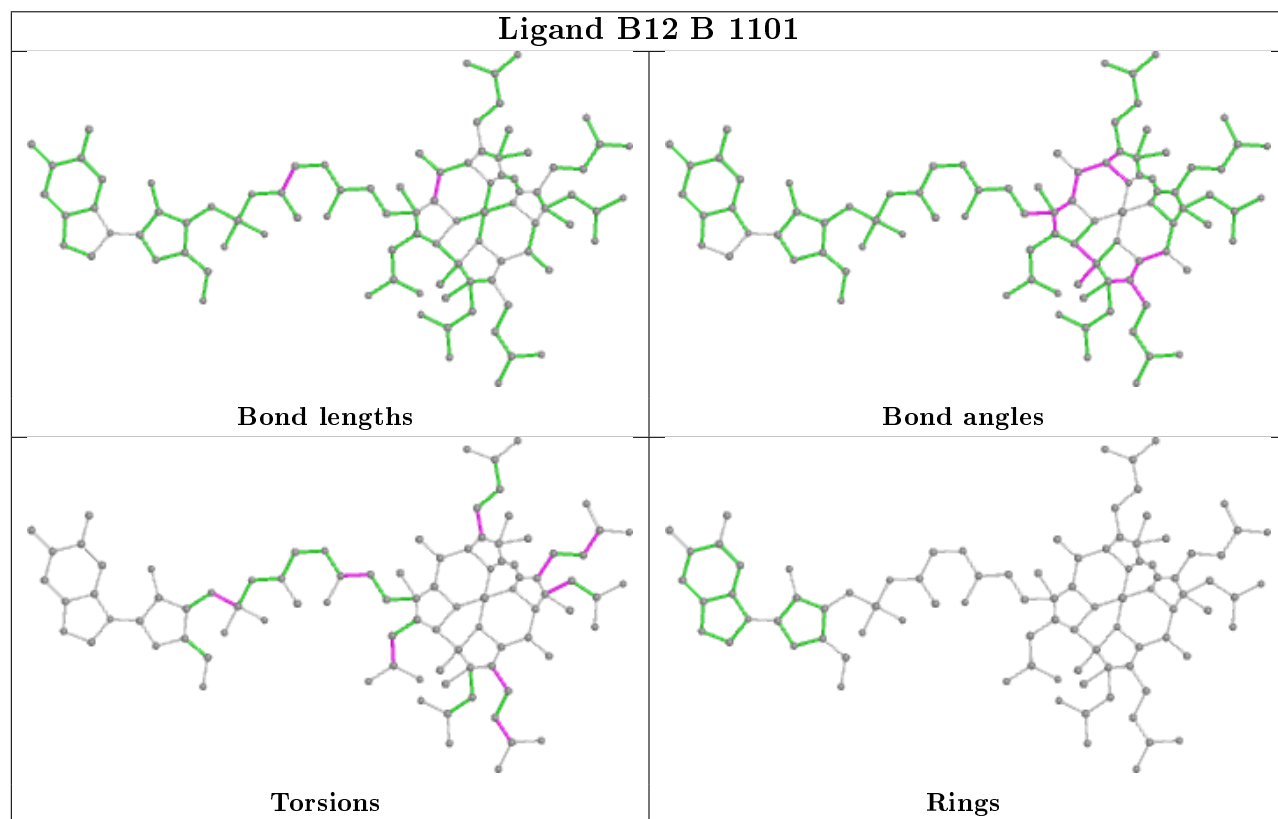
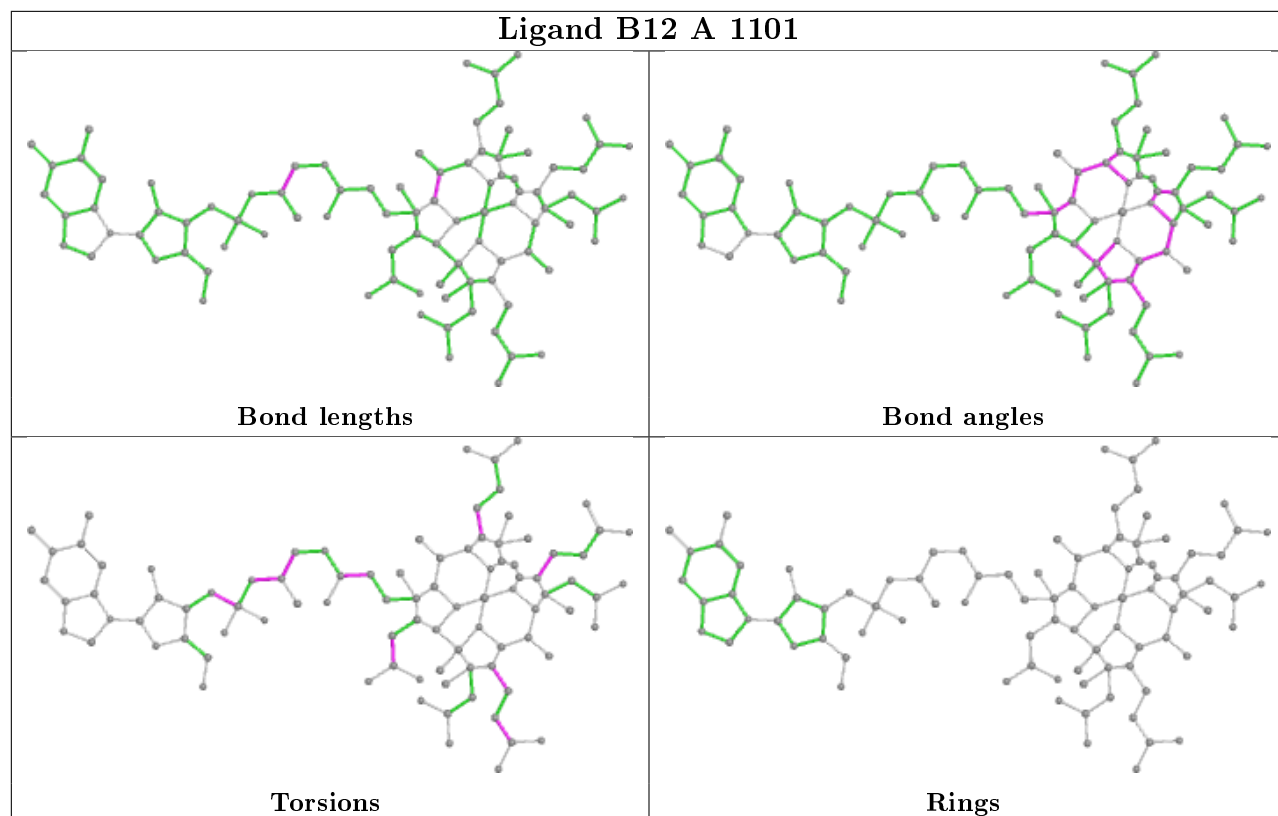
Mol	Chain	Res	Type	Atoms
4	A	1103	BCO	P3-O7-P2-O12
2	B	1101	B12	C55-C56-C57-N59
2	A	1101	B12	C4-C3-C30-C31
2	B	1101	B12	C4-C3-C30-C31

There are no ring outliers.

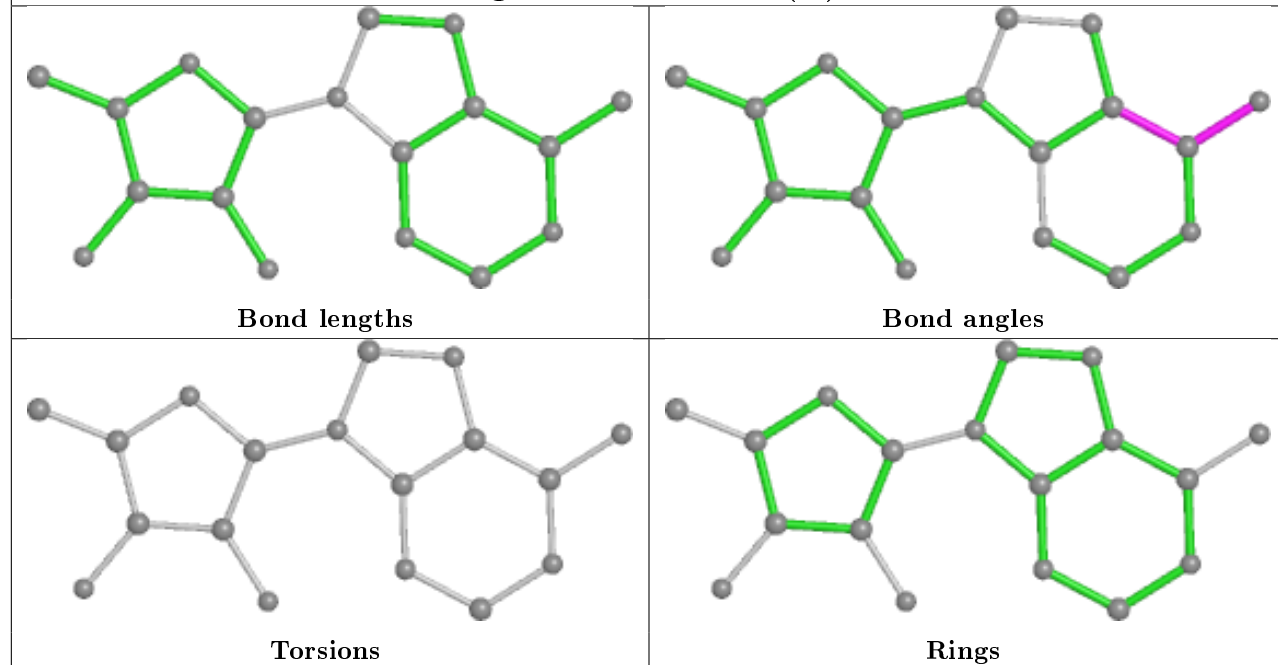
7 monomers are involved in 15 short contacts:

Mol	Chain	Res	Type	Clashes	Symm-Clashes
2	A	1101	B12	7	0
2	B	1101	B12	3	0
3	A	1102[A]	5AD	1	0
3	A	1102[B]	5AD	1	0
5	A	1104	GDP	1	0
4	A	1103	BCO	2	0
5	B	1103	GDP	1	0

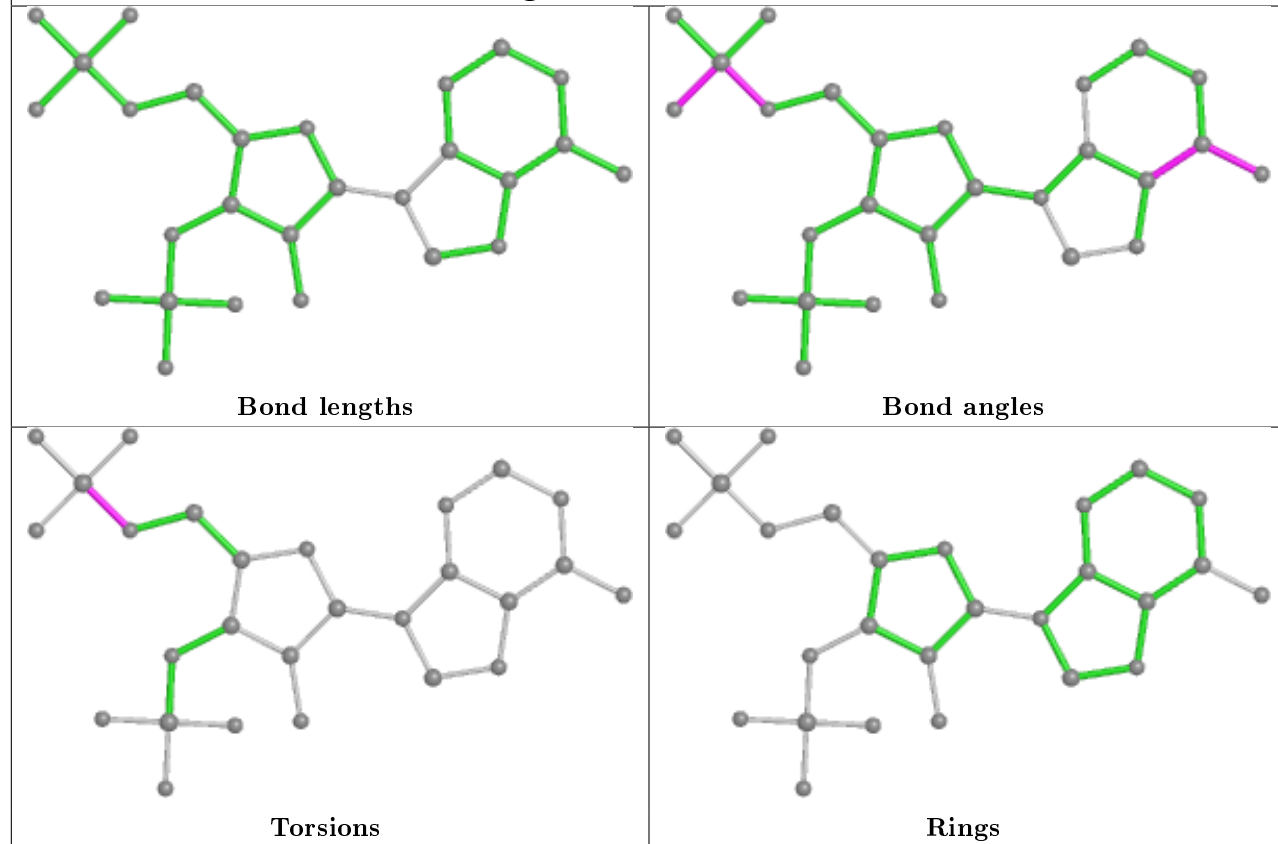
The following is a two-dimensional graphical depiction of Mogul quality analysis of bond lengths, bond angles, torsion angles, and ring geometry for all instances of the Ligand of Interest. In addition, ligands with molecular weight > 250 and outliers as shown on the validation Tables will also be included. For torsion angles, if less than 5% of the Mogul distribution of torsion angles is within 10 degrees of the torsion angle in question, then that torsion angle is considered an outlier. Any bond that is central to one or more torsion angles identified as an outlier by Mogul will be highlighted in the graph. For rings, the root-mean-square deviation (RMSD) between the ring in question and similar rings identified by Mogul is calculated over all ring torsion angles. If the average RMSD is greater than 60 degrees and the minimal RMSD between the ring in question and any Mogul-identified rings is also greater than 60 degrees, then that ring is considered an outlier. The outliers are highlighted in purple. The color gray indicates Mogul did not find sufficient equivalents in the CSD to analyse the geometry.



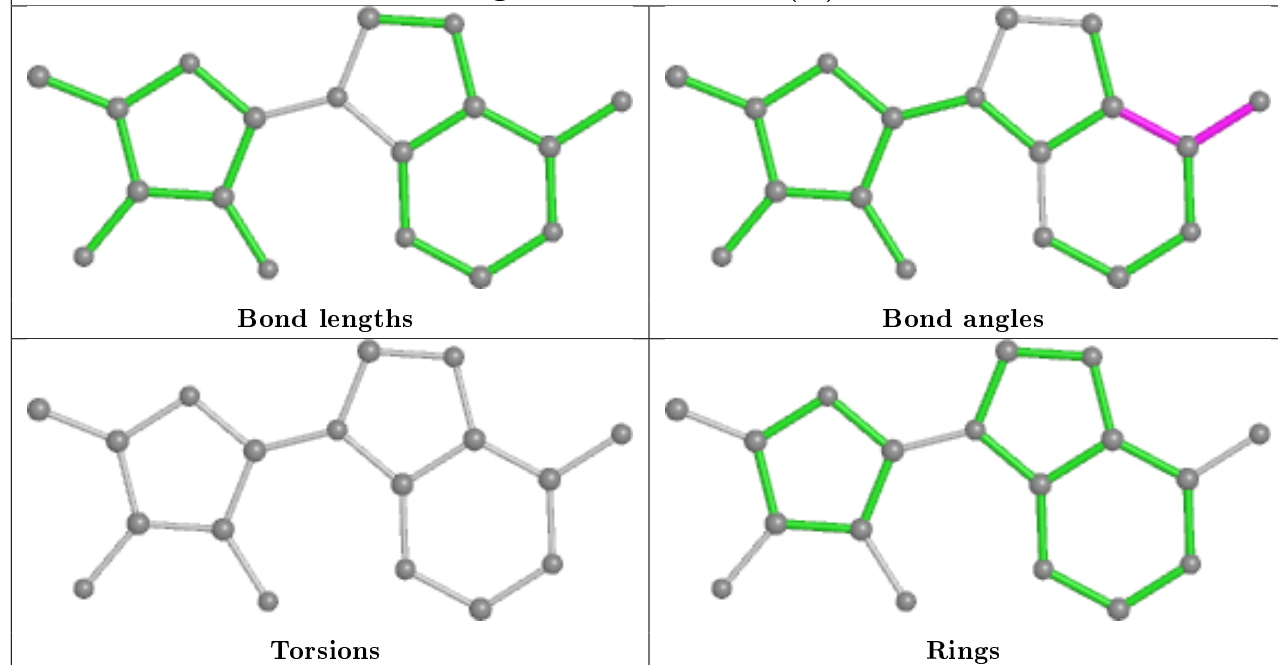
Ligand 5AD A 1102 (A)



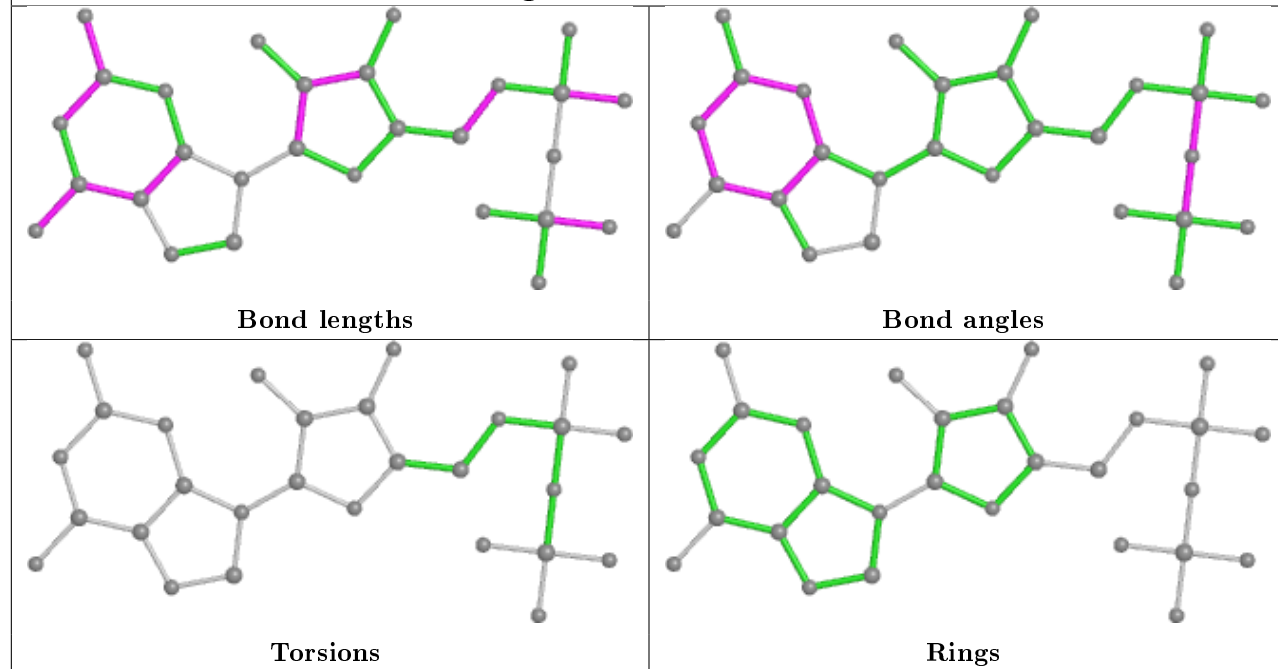
Ligand BCO B 1102

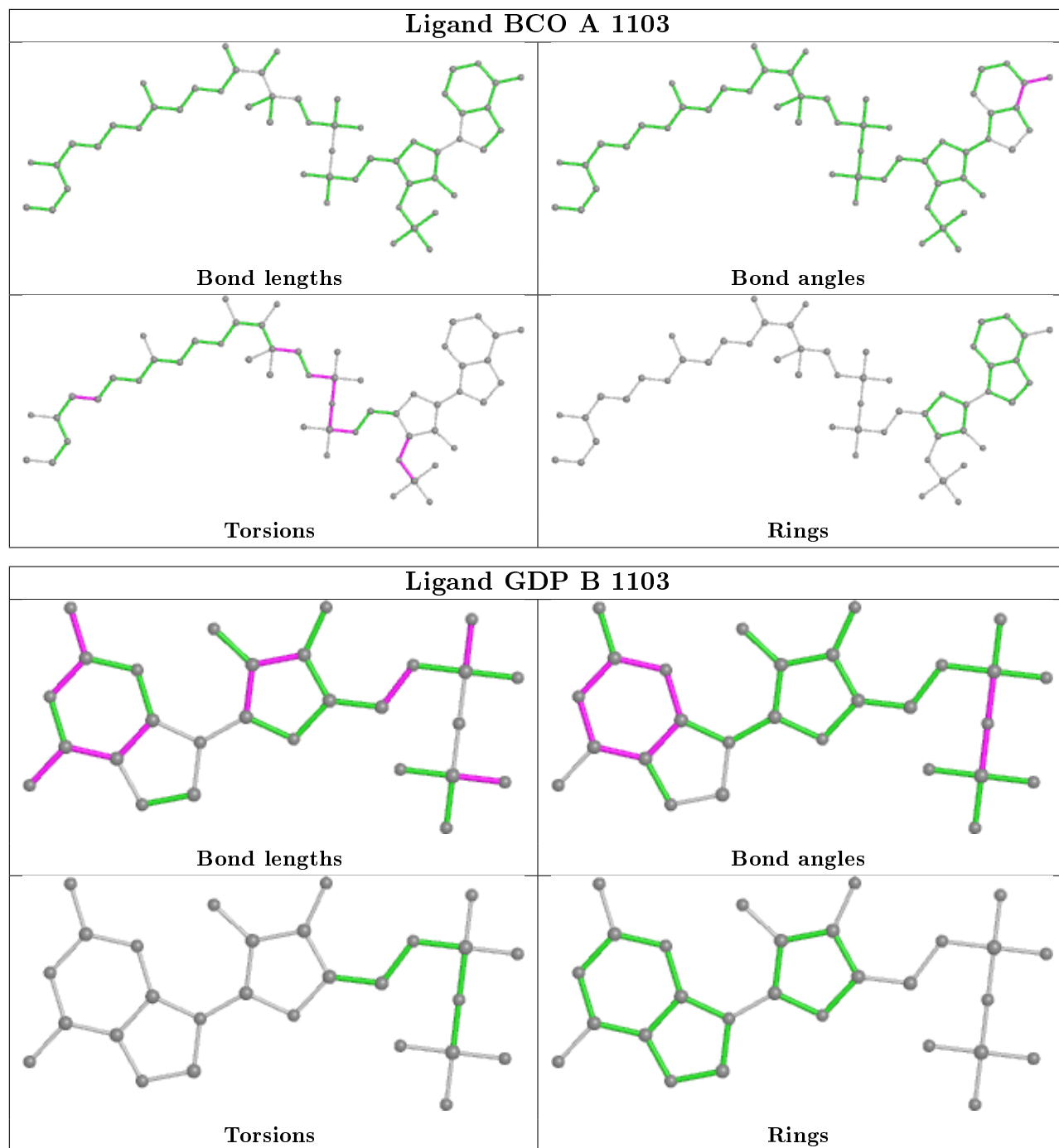


Ligand 5AD A 1102 (B)



Ligand GDP A 1104





5.7 Other polymers [i](#)

There are no such residues in this entry.

5.8 Polymer linkage issues [i](#)

There are no chain breaks in this entry.

6 Fit of model and data [i](#)

6.1 Protein, DNA and RNA chains [i](#)

In the following table, the column labelled ‘#RSRZ> 2’ contains the number (and percentage) of RSRZ outliers, followed by percent RSRZ outliers for the chain as percentile scores relative to all X-ray entries and entries of similar resolution. The OWAB column contains the minimum, median, 95th percentile and maximum values of the occupancy-weighted average B-factor per residue. The column labelled ‘Q< 0.9’ lists the number of (and percentage) of residues with an average occupancy less than 0.9.

Mol	Chain	Analysed	<RSRZ>	#RSRZ>2	OWAB(Å ²)	Q<0.9
1	A	1064/1113 (95%)	-0.39	2 (0%) 95 93	65, 96, 144, 206	0
1	B	1060/1113 (95%)	-0.38	6 (0%) 89 86	67, 93, 143, 214	0
All	All	2124/2226 (95%)	-0.39	8 (0%) 92 90	65, 94, 144, 214	0

All (8) RSRZ outliers are listed below:

Mol	Chain	Res	Type	RSRZ
1	B	909	THR	3.2
1	A	489	HIS	2.8
1	A	284	ALA	2.6
1	B	536	GLU	2.5
1	B	534	ASP	2.2
1	B	1008	PRO	2.2
1	B	530	VAL	2.1
1	B	908	THR	2.1

6.2 Non-standard residues in protein, DNA, RNA chains [i](#)

There are no non-standard protein/DNA/RNA residues in this entry.

6.3 Carbohydrates [i](#)

There are no carbohydrates in this entry.

6.4 Ligands [i](#)

In the following table, the Atoms column lists the number of modelled atoms in the group and the number defined in the chemical component dictionary. The B-factors column lists the minimum,

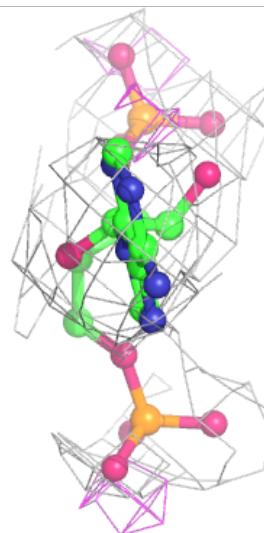
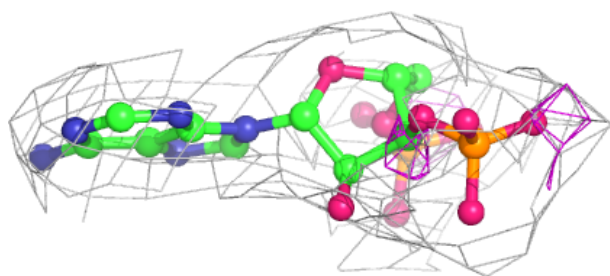
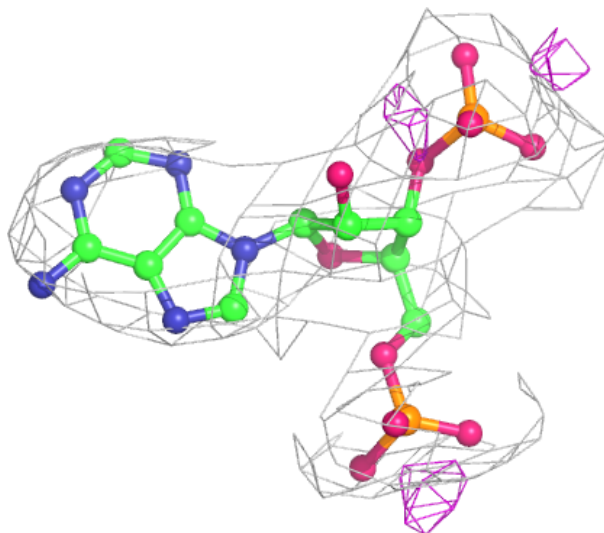
median, 95th percentile and maximum values of B factors of atoms in the group. The column labelled 'Q< 0.9' lists the number of atoms with occupancy less than 0.9.

Mol	Type	Chain	Res	Atoms	RSCC	RSR	B-factors(Å ²)	Q<0.9
4	BCO	B	1102	27/53	0.87	0.26	123,149,192,199	0
4	BCO	A	1103	53/53	0.93	0.20	75,102,143,147	0
6	MG	A	1106	1/1	0.94	0.28	75,75,75,75	0
2	B12	B	1101	91/91	0.94	0.23	97,118,135,145	0
5	GDP	B	1103	28/28	0.95	0.20	68,75,85,127	0
3	5AD	A	1102[B]	18/18	0.96	0.19	110,115,116,116	18
5	GDP	A	1104	28/28	0.96	0.17	74,95,104,107	0
3	5AD	A	1102[A]	18/18	0.96	0.19	110,114,116,116	18
6	MG	A	1105	1/1	0.96	0.20	70,70,70,70	0
2	B12	A	1101	91/91	0.97	0.20	59,77,91,96	0
6	MG	B	1105	1/1	0.98	0.32	55,55,55,55	0
6	MG	B	1104	1/1	0.98	0.31	59,59,59,59	0

The following is a graphical depiction of the model fit to experimental electron density of all instances of the Ligand of Interest. In addition, ligands with molecular weight > 250 and outliers as shown on the geometry validation Tables will also be included. Each fit is shown from different orientation to approximate a three-dimensional view.

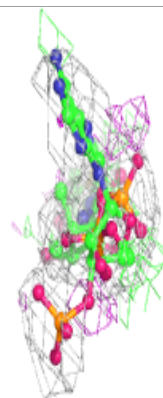
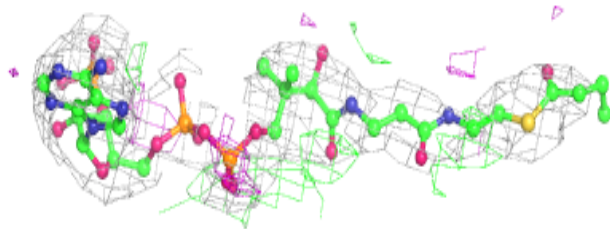
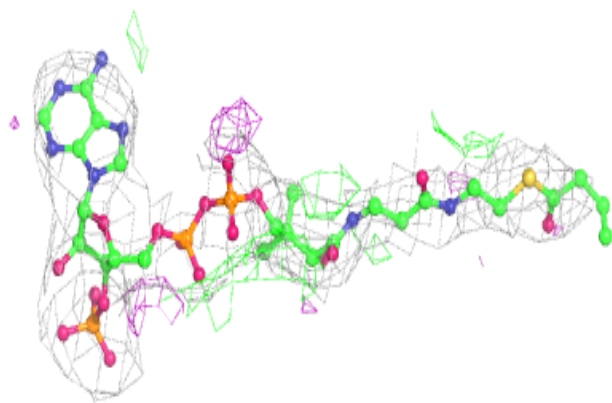
Electron density around BCO B 1102:

$2mF_o-DF_c$ (at 0.7 rmsd) in gray
 mF_o-DF_c (at 3 rmsd) in purple (negative)
and green (positive)

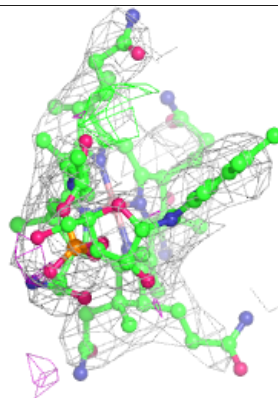
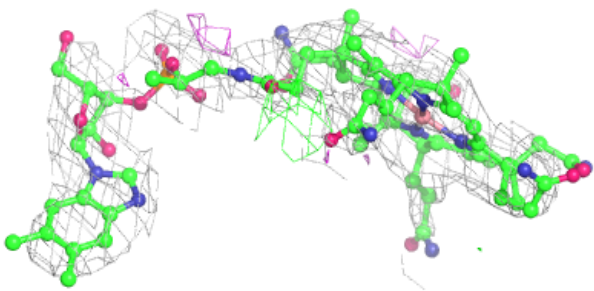
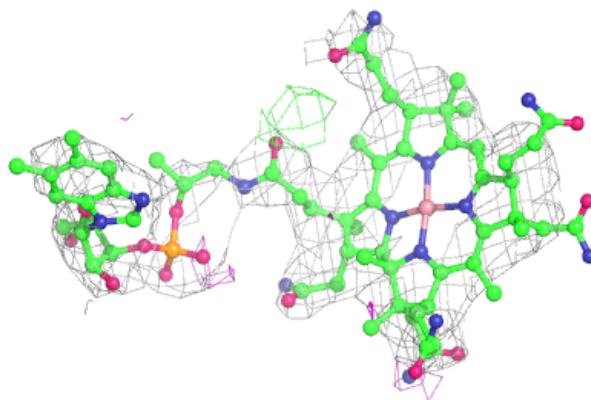


Electron density around BCO A 1103:

$2mF_o-DF_c$ (at 0.7 rmsd) in gray
 mF_o-DF_c (at 3 rmsd) in purple (negative)
and green (positive)

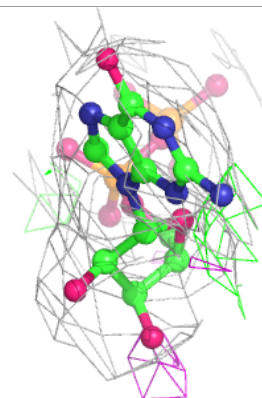
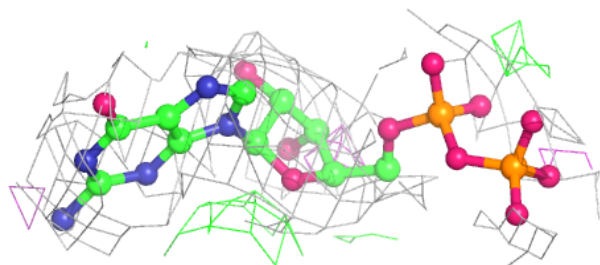
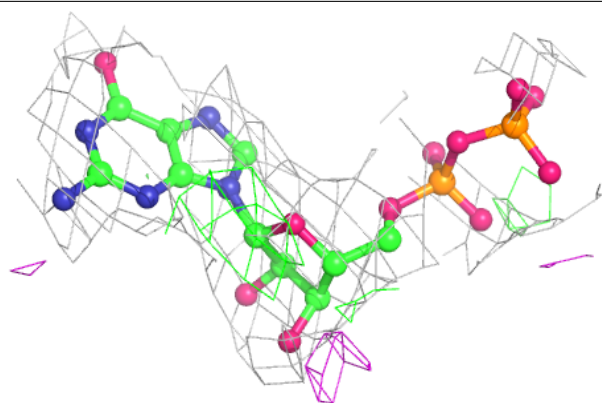
**Electron density around B12 B 1101:**

$2mF_o-DF_c$ (at 0.7 rmsd) in gray
 mF_o-DF_c (at 3 rmsd) in purple (negative)
and green (positive)

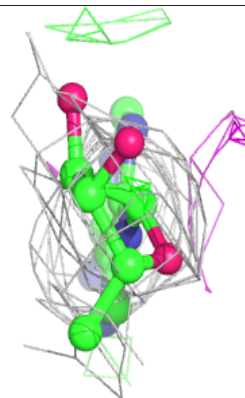
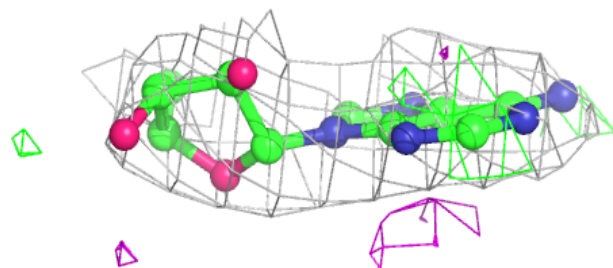
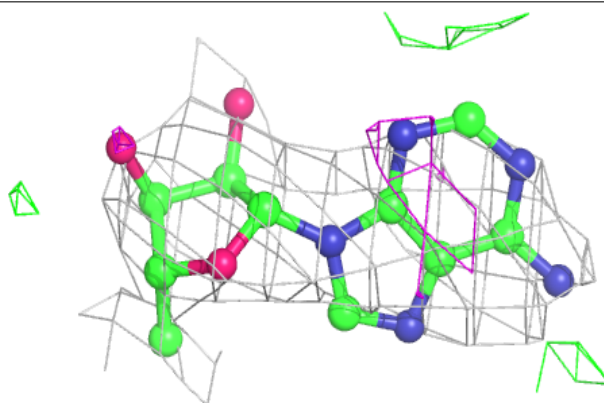


Electron density around GDP B 1103:

$2mF_o-DF_c$ (at 0.7 rmsd) in gray
 mF_o-DF_c (at 3 rmsd) in purple (negative)
and green (positive)

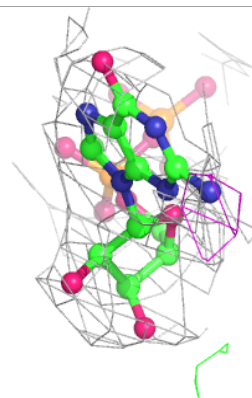
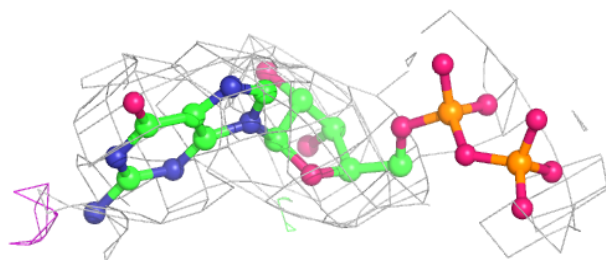
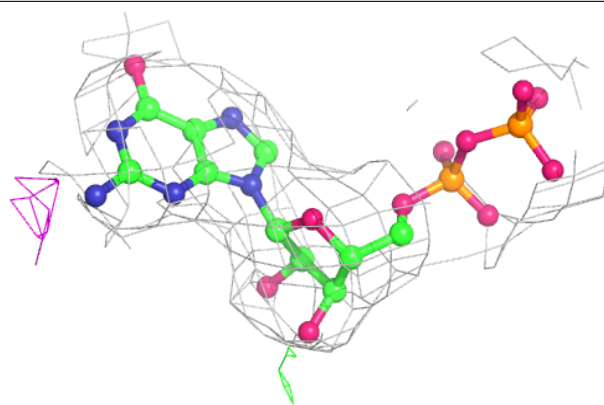
**Electron density around 5AD A 1102 (B):**

$2mF_o-DF_c$ (at 0.7 rmsd) in gray
 mF_o-DF_c (at 3 rmsd) in purple (negative)
and green (positive)

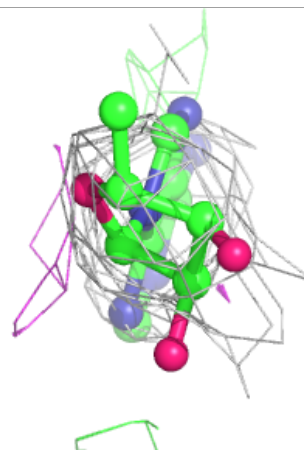
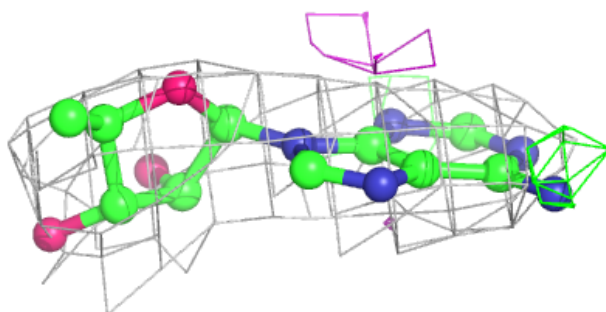
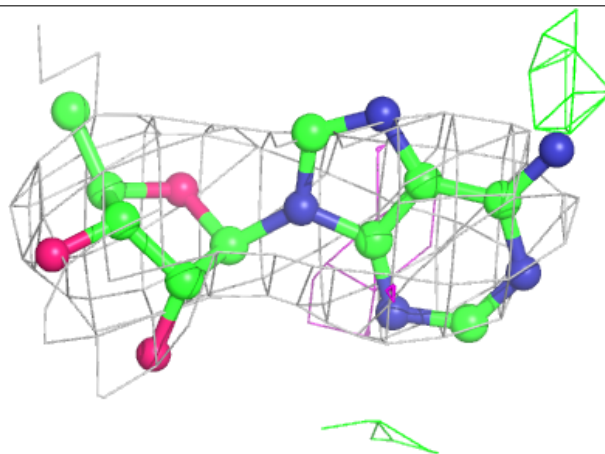


Electron density around GDP A 1104:

$2mF_o-DF_c$ (at 0.7 rmsd) in gray
 mF_o-DF_c (at 3 rmsd) in purple (negative)
and green (positive)

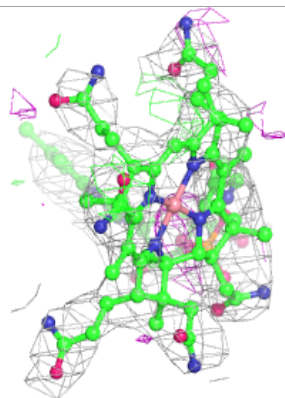
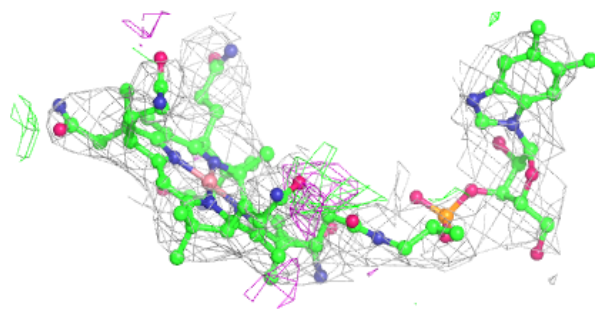
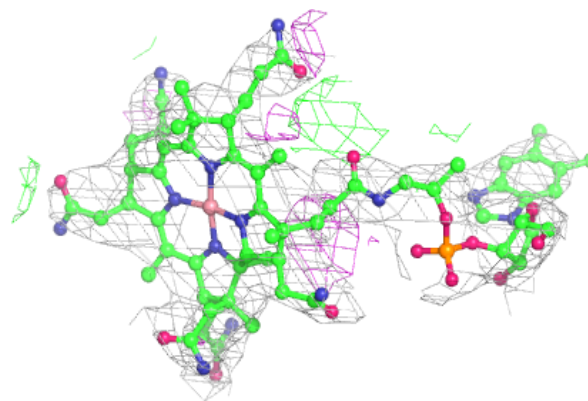
**Electron density around 5AD A 1102 (A):**

$2mF_o-DF_c$ (at 0.7 rmsd) in gray
 mF_o-DF_c (at 3 rmsd) in purple (negative)
and green (positive)



Electron density around B12 A 1101:

$2mF_o-DF_c$ (at 0.7 rmsd) in gray
 mF_o-DF_c (at 3 rmsd) in purple (negative)
and green (positive)



6.5 Other polymers [i](#)

There are no such residues in this entry.