



Full wwPDB X-ray Structure Validation Report ⓘ

May 15, 2020 – 05:06 pm BST

PDB ID : 6CJF
Title : Human dihydroorotate dehydrogenase bound to 4-quinoline carboxylic acid inhibitor 43
Authors : Petrunak, E.M.; Stuckey, J.A.
Deposited on : 2018-02-26
Resolution : 1.63 Å(reported)

This is a Full wwPDB X-ray Structure Validation Report for a publicly released PDB entry.

We welcome your comments at validation@mail.wwpdb.org

A user guide is available at

<https://www.wwpdb.org/validation/2017/XrayValidationReportHelp>

with specific help available everywhere you see the ⓘ symbol.

The following versions of software and data (see [references ⓘ](#)) were used in the production of this report:

MolProbity : 4.02b-467
Mogul : 1.8.5 (274361), CSD as541be (2020)
Xtriage (Phenix) : 1.13
EDS : 2.11
buster-report : 1.1.7 (2018)
Percentile statistics : 20191225.v01 (using entries in the PDB archive December 25th 2019)
Refmac : 5.8.0158
CCP4 : 7.0.044 (Gargrove)
Ideal geometry (proteins) : Engh & Huber (2001)
Ideal geometry (DNA, RNA) : Parkinson et al. (1996)
Validation Pipeline (wwPDB-VP) : 2.11

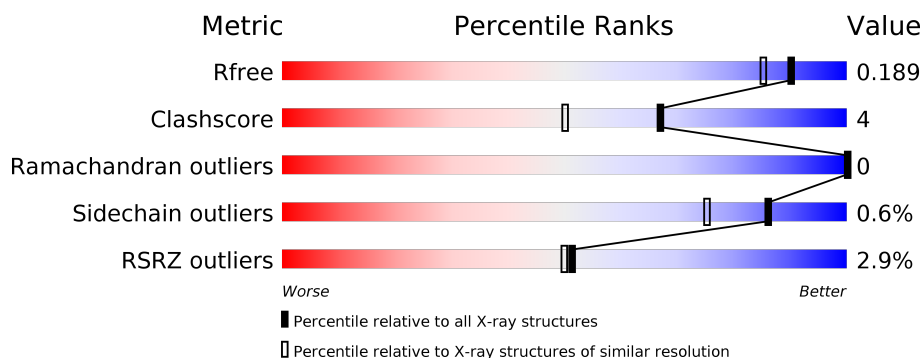
1 Overall quality at a glance

The following experimental techniques were used to determine the structure:

X-RAY DIFFRACTION

The reported resolution of this entry is 1.63 Å.

Percentile scores (ranging between 0-100) for global validation metrics of the entry are shown in the following graphic. The table shows the number of entries on which the scores are based.



Metric	Whole archive (#Entries)	Similar resolution (#Entries, resolution range(Å))
R_{free}	130704	3122 (1.66-1.62)
Clashscore	141614	3268 (1.66-1.62)
Ramachandran outliers	138981	3215 (1.66-1.62)
Sidechain outliers	138945	3215 (1.66-1.62)
RSRZ outliers	127900	3079 (1.66-1.62)

The table below summarises the geometric issues observed across the polymeric chains and their fit to the electron density. The red, orange, yellow and green segments on the lower bar indicate the fraction of residues that contain outliers for ≥ 3 , 2, 1 and 0 types of geometric quality criteria respectively. A grey segment represents the fraction of residues that are not modelled. The numeric value for each fraction is indicated below the corresponding segment, with a dot representing fractions $\leq 5\%$. The upper red bar (where present) indicates the fraction of residues that have poor fit to the electron density. The numeric value is given above the bar.

Mol	Chain	Length	Quality of chain
1	A	374	<div> <div>2%</div> <div> <div></div> <div>86%</div> <div>7%</div> <div>6%</div> </div> </div>
1	B	374	<div> <div>3%</div> <div> <div></div> <div>85%</div> <div>8%</div> <div>7%</div> </div> </div>

2 Entry composition

There are 6 unique types of molecules in this entry. The entry contains 5864 atoms, of which 15 are hydrogens and 0 are deuteriums.

In the tables below, the ZeroOcc column contains the number of atoms modelled with zero occupancy, the AltConf column contains the number of residues with at least one atom in alternate conformation and the Trace column contains the number of residues modelled with at most 2 atoms.

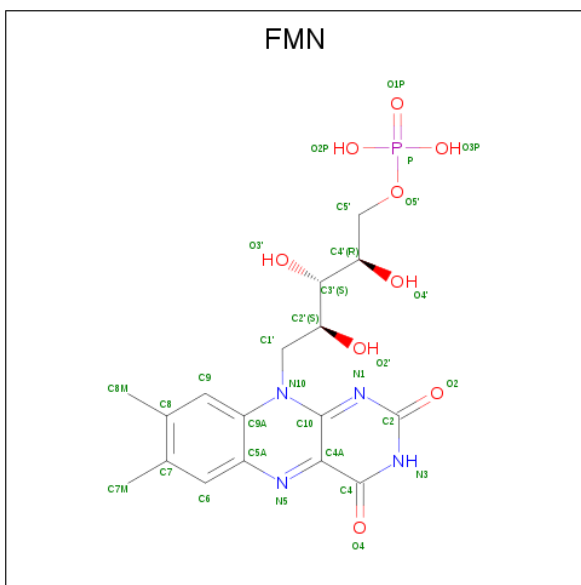
- Molecule 1 is a protein called Dihydroorotate dehydrogenase (quinone), mitochondrial.

Mol	Chain	Residues	Atoms					ZeroOcc	AltConf	Trace
1	A	350	Total	C	N	O	S	0	7	0
			2657	1680	473	500	4			
1	B	349	Total	C	N	O	S	0	9	0
			2646	1677	475	490	4			

There are 20 discrepancies between the modelled and reference sequences:

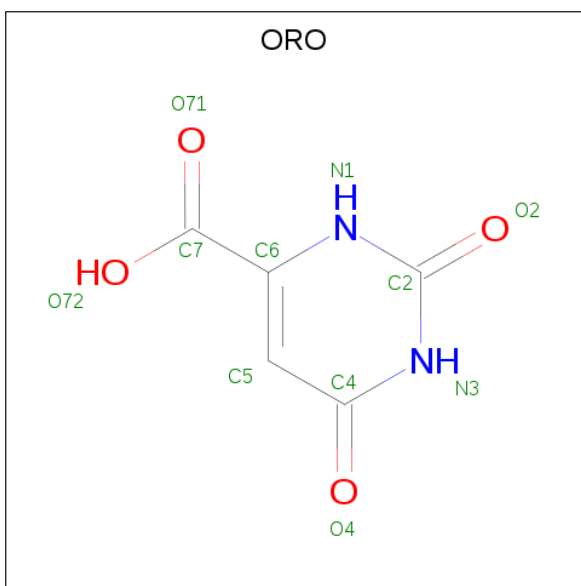
Chain	Residue	Modelled	Actual	Comment	Reference
A	397	LEU	-	expression tag	UNP Q02127
A	398	GLU	-	expression tag	UNP Q02127
A	399	ALA	-	expression tag	UNP Q02127
A	400	GLY	-	expression tag	UNP Q02127
A	401	HIS	-	expression tag	UNP Q02127
A	402	HIS	-	expression tag	UNP Q02127
A	403	HIS	-	expression tag	UNP Q02127
A	404	HIS	-	expression tag	UNP Q02127
A	405	HIS	-	expression tag	UNP Q02127
A	406	HIS	-	expression tag	UNP Q02127
B	397	LEU	-	expression tag	UNP Q02127
B	398	GLU	-	expression tag	UNP Q02127
B	399	ALA	-	expression tag	UNP Q02127
B	400	GLY	-	expression tag	UNP Q02127
B	401	HIS	-	expression tag	UNP Q02127
B	402	HIS	-	expression tag	UNP Q02127
B	403	HIS	-	expression tag	UNP Q02127
B	404	HIS	-	expression tag	UNP Q02127
B	405	HIS	-	expression tag	UNP Q02127
B	406	HIS	-	expression tag	UNP Q02127

- Molecule 2 is FLAVIN MONONUCLEOTIDE (three-letter code: FMN) (formula: C₁₇H₂₁N₄O₉P).



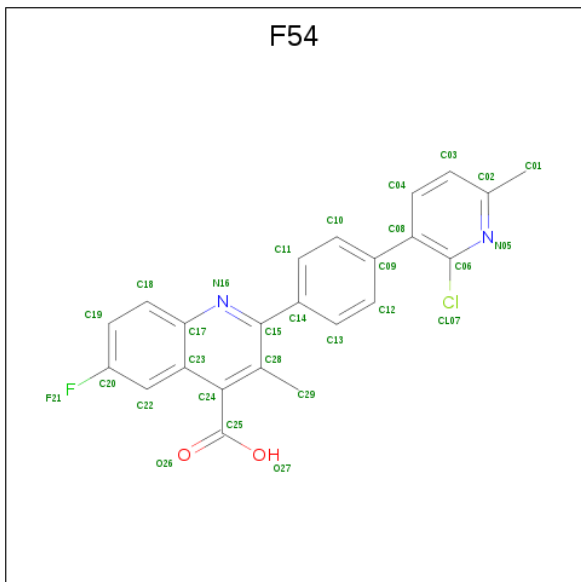
Mol	Chain	Residues	Atoms					ZeroOcc	AltConf
2	A	1	Total 31	C 17	N 4	O 9	P 1	0	0
2	B	1	Total 31	C 17	N 4	O 9	P 1	0	0

- Molecule 3 is OROTIC ACID (three-letter code: ORO) (formula: $C_5H_4N_2O_4$).



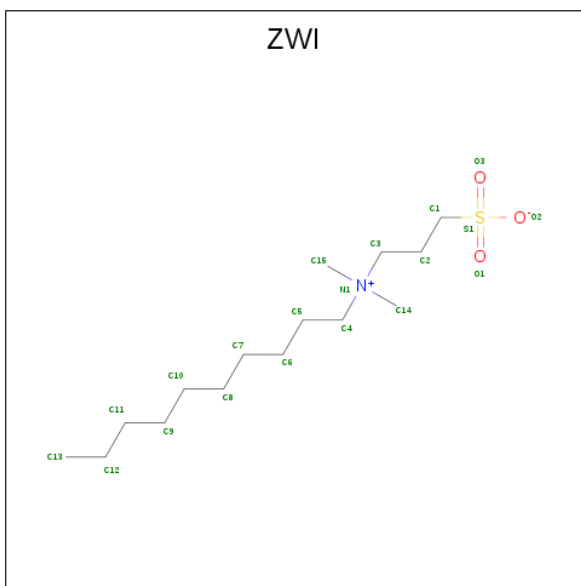
Mol	Chain	Residues	Atoms				ZeroOcc	AltConf
3	A	1	Total 11	C 5	N 2	O 4	0	0
3	B	1	Total 11	C 5	N 2	O 4	0	0

- Molecule 4 is 2-[4-(2-chloro-6-methylpyridin-3-yl)phenyl]-6-fluoro-3-methylquinoline-4-carboxylic acid (three-letter code: F54) (formula: $C_{23}H_{16}ClFN_2O_2$).



Mol	Chain	Residues	Atoms						ZeroOcc	AltConf
4	A	1	Total	C	Cl	F	N	O	0	1
			37	29	2	1	3	2		
4	B	1	Total	C	Cl	F	N	O	0	1
			37	29	2	1	3	2		

- Molecule 5 is 3-[decyl(dimethyl)ammonio]propane-1-sulfonate (three-letter code: ZWI) (formula: $C_{15}H_{33}NO_3S$).



Mol	Chain	Residues	Atoms	ZeroOcc	AltConf
5	A	1	Total C 9 9	0	0
5	B	1	Total C 7 7	0	0
5	B	1	Total C H 22 7 15	0	0

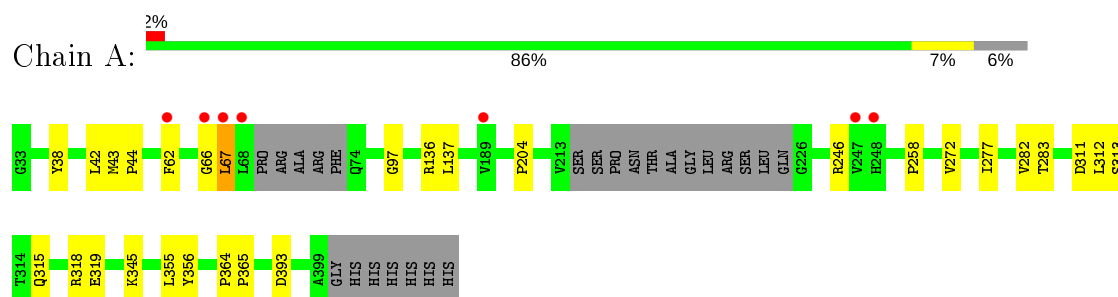
- Molecule 6 is water.

Mol	Chain	Residues	Atoms	ZeroOcc	AltConf
6	A	179	Total O 179 179	0	0
6	B	186	Total O 186 186	0	0

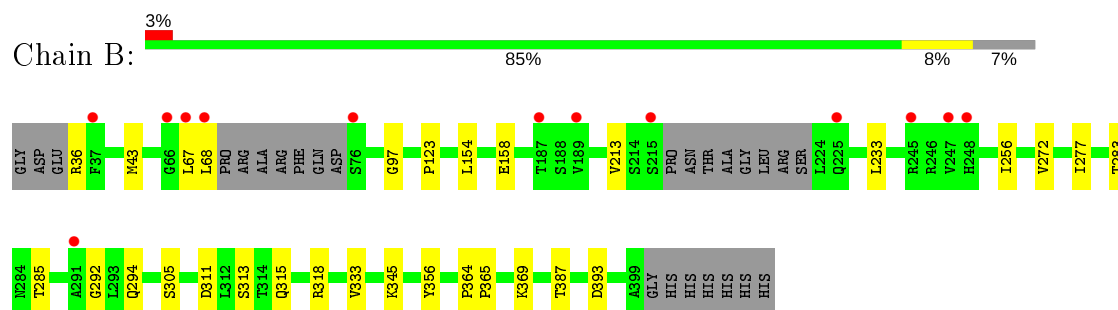
3 Residue-property plots [i](#)

These plots are drawn for all protein, RNA and DNA chains in the entry. The first graphic for a chain summarises the proportions of the various outlier classes displayed in the second graphic. The second graphic shows the sequence view annotated by issues in geometry and electron density. Residues are color-coded according to the number of geometric quality criteria for which they contain at least one outlier: green = 0, yellow = 1, orange = 2 and red = 3 or more. A red dot above a residue indicates a poor fit to the electron density ($RSRZ > 2$). Stretches of 2 or more consecutive residues without any outlier are shown as a green connector. Residues present in the sample, but not in the model, are shown in grey.

- Molecule 1: Dihydroorotate dehydrogenase (quinone), mitochondrial



- Molecule 1: Dihydroorotate dehydrogenase (quinone), mitochondrial



4 Data and refinement statistics

Property	Value	Source
Space group	P 1	Depositor
Cell constants a, b, c, α , β , γ	50.75Å 51.53Å 65.09Å 89.15° 81.61° 76.44°	Depositor
Resolution (Å)	32.47 – 1.63 32.47 – 1.63	Depositor EDS
% Data completeness (in resolution range)	95.4 (32.47-1.63) 95.4 (32.47-1.63)	Depositor EDS
R_{merge}	(Not available)	Depositor
R_{sym}	0.06	Depositor
$\langle I/\sigma(I) \rangle$ ¹	3.85 (at 1.63Å)	Xtriage
Refinement program	PHENIX (1.13 _2998: ???)	Depositor
R, R_{free}	0.163 , 0.189 0.163 , 0.189	Depositor DCC
R_{free} test set	3818 reflections (5.05%)	wwPDB-VP
Wilson B-factor (Å ²)	12.8	Xtriage
Anisotropy	0.096	Xtriage
Bulk solvent k_{sol} (e/Å ³), B_{sol} (Å ²)	0.39 , 61.5	EDS
L-test for twinning ²	$\langle L \rangle = 0.50$, $\langle L^2 \rangle = 0.33$	Xtriage
Estimated twinning fraction	No twinning to report.	Xtriage
F_o, F_c correlation	0.96	EDS
Total number of atoms	5864	wwPDB-VP
Average B, all atoms (Å ²)	16.0	wwPDB-VP

Xtriage's analysis on translational NCS is as follows: *The largest off-origin peak in the Patterson function is 6.77% of the height of the origin peak. No significant pseudotranslation is detected.*

¹Intensities estimated from amplitudes.

²Theoretical values of $\langle |L| \rangle$, $\langle L^2 \rangle$ for acentric reflections are 0.5, 0.333 respectively for untwinned datasets, and 0.375, 0.2 for perfectly twinned datasets.

5 Model quality [i](#)

5.1 Standard geometry [i](#)

Bond lengths and bond angles in the following residue types are not validated in this section: FMN, ZWI, F54, ORO

The Z score for a bond length (or angle) is the number of standard deviations the observed value is removed from the expected value. A bond length (or angle) with $|Z| > 5$ is considered an outlier worth inspection. RMSZ is the root-mean-square of all Z scores of the bond lengths (or angles).

Mol	Chain	Bond lengths		Bond angles	
		RMSZ	$\# Z > 5$	RMSZ	$\# Z > 5$
1	A	0.33	0/2715	0.54	1/3675 (0.0%)
1	B	0.34	0/2709	0.54	0/3667
All	All	0.34	0/5424	0.54	1/7342 (0.0%)

There are no bond length outliers.

All (1) bond angle outliers are listed below:

Mol	Chain	Res	Type	Atoms	Z	Observed(°)	Ideal(°)
1	A	67	LEU	CA-CB-CG	5.12	127.07	115.30

There are no chirality outliers.

There are no planarity outliers.

5.2 Too-close contacts [i](#)

In the following table, the Non-H and H(model) columns list the number of non-hydrogen atoms and hydrogen atoms in the chain respectively. The H(added) column lists the number of hydrogen atoms added and optimized by MolProbity. The Clashes column lists the number of clashes within the asymmetric unit, whereas Symm-Clashes lists symmetry related clashes.

Mol	Chain	Non-H	H(model)	H(added)	Clashes	Symm-Clashes
1	A	2657	0	2660	25	0
1	B	2646	0	2689	19	0
2	A	31	0	19	1	0
2	B	31	0	19	1	0
3	A	11	0	3	0	0
3	B	11	0	3	0	0
4	A	37	0	0	2	0
4	B	37	0	0	1	0

Continued on next page...

Continued from previous page...

Mol	Chain	Non-H	H(model)	H(added)	Clashes	Symm-Clashes
5	A	9	0	17	2	0
5	B	14	15	26	0	0
6	A	179	0	0	0	0
6	B	186	0	0	3	0
All	All	5849	15	5436	43	0

The all-atom clashscore is defined as the number of clashes found per 1000 atoms (including hydrogen atoms). The all-atom clashscore for this structure is 4.

All (43) close contacts within the same asymmetric unit are listed below, sorted by their clash magnitude.

Atom-1	Atom-2	Interatomic distance (Å)	Clash overlap (Å)
1:A:66:GLY:O	1:A:67:LEU:HG	1.76	0.86
1:A:62:PHE:CE2	1:A:67:LEU:HD21	2.22	0.74
1:B:36:ARG:N	6:B:601:HOH:O	2.32	0.62
1:A:258:PRO:HB2	1:A:312:LEU:HG	1.84	0.59
1:A:67:LEU:HD12	1:A:67:LEU:O	2.02	0.59
1:B:369:LYS:HE2	6:B:671:HOH:O	2.02	0.58
1:A:62:PHE:CZ	5:A:504:ZWI:H92	2.40	0.57
1:A:204:PRO:HA	1:A:246:ARG:HD2	1.87	0.56
4:A:503[A]:F54:C01	5:A:504:ZWI:H91	2.36	0.56
1:B:67:LEU:O	1:B:68:LEU:HD13	2.04	0.56
1:A:62:PHE:CZ	1:A:67:LEU:HD21	2.43	0.53
1:B:67:LEU:C	1:B:68:LEU:HD22	2.29	0.53
1:A:62:PHE:HE2	1:A:67:LEU:HD11	1.74	0.52
1:B:213:VAL:CG2	1:B:256:ILE:HG22	2.40	0.51
1:B:43:MET:SD	4:B:503[B]:F54:CL07	3.06	0.50
1:A:319:GLU:HG3	1:B:294:GLN:NE2	2.26	0.49
1:A:43:MET:SD	4:A:503[B]:F54:CL07	3.08	0.48
1:A:311:ASP:O	1:A:315:GLN:HG3	2.12	0.48
1:B:272:VAL:HG13	1:B:277:ILE:HB	1.95	0.47
1:A:62:PHE:CE2	1:A:67:LEU:HD11	2.49	0.47
1:B:311:ASP:O	1:B:315:GLN:HG3	2.15	0.47
1:A:258:PRO:CB	1:A:312:LEU:HG	2.44	0.47
1:A:272:VAL:HG13	1:A:277:ILE:HB	1.95	0.47
1:B:283:THR:O	1:B:333[B]:VAL:HG13	2.16	0.46
1:A:315:GLN:OE1	1:B:292:GLY:HA3	2.17	0.45
1:A:313[B]:SER:OG	1:A:345:LYS:HE3	2.16	0.45
1:B:97:GLY:HA3	2:B:501:FMN:N5	2.32	0.45
1:B:364:PRO:N	1:B:365:PRO:CD	2.80	0.45
1:A:318[A]:ARG:NH1	1:A:393:ASP:OD2	2.50	0.44

Continued on next page...

Continued from previous page...

Atom-1	Atom-2	Interatomic distance (Å)	Clash overlap (Å)
1:A:364:PRO:N	1:A:365:PRO:CD	2.80	0.44
1:A:258:PRO:HB2	1:A:312:LEU:CG	2.48	0.43
1:B:318[B]:ARG:NH1	1:B:393:ASP:OD1	2.50	0.43
1:B:387:THR:HG21	6:B:719:HOH:O	2.18	0.43
1:B:123:PRO:HA	1:B:154:LEU:HD12	2.00	0.42
1:A:97:GLY:HA3	2:A:501:FMN:N5	2.34	0.42
1:A:355:LEU:HD12	1:A:355:LEU:C	2.40	0.41
1:B:313[A]:SER:OG	1:B:345:LYS:HE3	2.21	0.41
1:A:38:TYR:CE2	1:A:42:LEU:HD23	2.55	0.41
1:B:233:LEU:HD12	1:B:233:LEU:C	2.41	0.41
1:B:285:THR:HG22	1:B:305:SER:HB3	2.03	0.41
1:A:282:VAL:HA	1:A:283:THR:HA	1.86	0.40
1:A:43:MET:HB2	1:A:44:PRO:HD3	2.02	0.40
1:A:136:ARG:C	1:A:137:LEU:HD12	2.41	0.40

There are no symmetry-related clashes.

5.3 Torsion angles [i](#)

5.3.1 Protein backbone [i](#)

In the following table, the Percentiles column shows the percent Ramachandran outliers of the chain as a percentile score with respect to all X-ray entries followed by that with respect to entries of similar resolution.

The Analysed column shows the number of residues for which the backbone conformation was analysed, and the total number of residues.

Mol	Chain	Analysed	Favoured	Allowed	Outliers	Percentiles	
1	A	351/374 (94%)	338 (96%)	13 (4%)	0	100	100
1	B	352/374 (94%)	338 (96%)	14 (4%)	0	100	100
All	All	703/748 (94%)	676 (96%)	27 (4%)	0	100	100

There are no Ramachandran outliers to report.

5.3.2 Protein sidechains [i](#)

In the following table, the Percentiles column shows the percent sidechain outliers of the chain as a percentile score with respect to all X-ray entries followed by that with respect to entries of similar resolution.

The Analysed column shows the number of residues for which the sidechain conformation was analysed, and the total number of residues.

Mol	Chain	Analysed	Rotameric	Outliers	Percentiles	
1	A	271/302 (90%)	270 (100%)	1 (0%)	91	84
1	B	273/302 (90%)	271 (99%)	2 (1%)	84	71
All	All	544/604 (90%)	541 (99%)	3 (1%)	86	75

All (3) residues with a non-rotameric sidechain are listed below:

Mol	Chain	Res	Type
1	A	356	TYR
1	B	158	GLU
1	B	356	TYR

Some sidechains can be flipped to improve hydrogen bonding and reduce clashes. There are no such sidechains identified.

5.3.3 RNA ⓘ

There are no RNA molecules in this entry.

5.4 Non-standard residues in protein, DNA, RNA chains ⓘ

There are no non-standard protein/DNA/RNA residues in this entry.

5.5 Carbohydrates ⓘ

There are no carbohydrates in this entry.

5.6 Ligand geometry ⓘ

11 ligands are modelled in this entry.

In the following table, the Counts columns list the number of bonds (or angles) for which Mogul statistics could be retrieved, the number of bonds (or angles) that are observed in the model and the number of bonds (or angles) that are defined in the Chemical Component Dictionary. The Link column lists molecule types, if any, to which the group is linked. The Z score for a bond length (or angle) is the number of standard deviations the observed value is removed from the expected value. A bond length (or angle) with $|Z| > 2$ is considered an outlier worth inspection. RMSZ is the root-mean-square of all Z scores of the bond lengths (or angles).

Mol	Type	Chain	Res	Link	Bond lengths			Bond angles		
					Counts	RMSZ	# Z > 2	Counts	RMSZ	# Z > 2
2	FMN	A	501	-	31,33,33	1.53	5 (16%)	40,50,50	1.77	7 (17%)
3	ORO	B	502	-	6,11,11	1.40	0	3,15,15	2.44	1 (33%)
5	ZWI	B	504	-	6,6,19	0.55	0	5,5,24	0.80	0
4	F54	B	503[A]	-	30,32,32	1.60	5 (16%)	42,47,47	1.62	10 (23%)
3	ORO	A	502	-	6,11,11	1.49	0	3,15,15	2.16	1 (33%)
2	FMN	B	501	-	31,33,33	1.56	5 (16%)	40,50,50	1.63	7 (17%)
4	F54	A	503[B]	-	30,32,32	1.59	4 (13%)	42,47,47	1.39	4 (9%)
4	F54	B	503[B]	-	30,32,32	1.57	5 (16%)	42,47,47	1.32	6 (14%)
5	ZWI	A	504	-	8,8,19	0.66	0	7,7,24	0.69	0
5	ZWI	B	505	-	6,6,19	0.52	0	5,5,24	0.66	0
4	F54	A	503[A]	-	30,32,32	1.62	5 (16%)	42,47,47	1.83	10 (23%)

In the following table, the Chirals column lists the number of chiral outliers, the number of chiral centers analysed, the number of these observed in the model and the number defined in the Chemical Component Dictionary. Similar counts are reported in the Torsion and Rings columns. '-' means no outliers of that kind were identified.

Mol	Type	Chain	Res	Link	Chirals	Torsions	Rings
2	FMN	A	501	-	-	4/18/18/18	0/3/3/3
3	ORO	B	502	-	-	0/0/4/4	0/1/1/1
5	ZWI	B	504	-	-	0/4/4/19	-
4	F54	B	503[A]	-	-	0/8/12/12	0/4/4/4
3	ORO	A	502	-	-	0/0/4/4	0/1/1/1
2	FMN	B	501	-	-	5/18/18/18	0/3/3/3
4	F54	A	503[B]	-	-	0/8/12/12	0/4/4/4
4	F54	B	503[B]	-	-	0/8/12/12	0/4/4/4
5	ZWI	A	504	-	-	4/6/6/19	-
5	ZWI	B	505	-	-	3/4/4/19	-
4	F54	A	503[A]	-	-	0/8/12/12	0/4/4/4

All (29) bond length outliers are listed below:

Mol	Chain	Res	Type	Atoms	Z	Observed(Å)	Ideal(Å)
4	A	503[B]	F54	C24-C25	5.87	1.53	1.47
4	A	503[A]	F54	C24-C25	5.87	1.53	1.47
4	B	503[A]	F54	C24-C25	5.12	1.52	1.47
4	B	503[B]	F54	C24-C25	5.12	1.52	1.47
2	A	501	FMN	C4A-N5	4.23	1.39	1.33
2	B	501	FMN	C4A-N5	4.22	1.39	1.33

Continued on next page...

Continued from previous page...

Mol	Chain	Res	Type	Atoms	Z	Observed(Å)	Ideal(Å)
2	B	501	FMN	C10-N1	4.13	1.38	1.33
2	A	501	FMN	C10-N1	4.07	1.38	1.33
2	A	501	FMN	C1'-N10	3.36	1.51	1.48
2	B	501	FMN	C4-N3	3.24	1.38	1.33
2	A	501	FMN	C4-N3	3.19	1.38	1.33
4	B	503[A]	F54	C14-C15	3.18	1.52	1.49
4	B	503[B]	F54	C14-C15	3.18	1.52	1.49
2	B	501	FMN	C1'-N10	3.12	1.51	1.48
2	B	501	FMN	C5A-N5	2.75	1.39	1.35
4	A	503[B]	F54	C14-C15	2.72	1.52	1.49
4	A	503[A]	F54	C14-C15	2.72	1.52	1.49
4	A	503[B]	F54	C23-C17	-2.72	1.38	1.42
4	A	503[A]	F54	C23-C17	-2.72	1.38	1.42
4	B	503[A]	F54	C23-C17	-2.70	1.38	1.42
4	B	503[B]	F54	C23-C17	-2.70	1.38	1.42
2	A	501	FMN	C5A-N5	2.58	1.39	1.35
4	A	503[B]	F54	C08-C09	2.41	1.53	1.49
4	A	503[A]	F54	C06-CL07	2.39	1.78	1.74
4	B	503[A]	F54	C22-C20	2.35	1.40	1.36
4	B	503[B]	F54	C22-C20	2.35	1.40	1.36
4	B	503[B]	F54	C08-C09	2.29	1.53	1.49
4	B	503[A]	F54	C06-CL07	2.24	1.77	1.74
4	A	503[A]	F54	C06-C08	-2.14	1.36	1.40

All (46) bond angle outliers are listed below:

Mol	Chain	Res	Type	Atoms	Z	Observed(°)	Ideal(°)
2	A	501	FMN	C4-N3-C2	6.95	121.01	115.14
2	B	501	FMN	C4-N3-C2	6.42	120.56	115.14
4	A	503[A]	F54	C08-C06-N05	-4.24	121.65	125.19
3	B	502	ORO	C5-C4-N3	-4.11	119.28	124.08
2	A	501	FMN	C5A-C9A-N10	4.05	120.65	117.72
2	A	501	FMN	C1'-N10-C9A	3.97	121.42	118.29
4	A	503[A]	F54	CL07-C06-N05	3.93	122.19	115.56
4	A	503[A]	F54	C12-C09-C08	-3.79	114.77	120.91
4	B	503[A]	F54	C08-C06-N05	-3.70	122.09	125.19
3	A	502	ORO	C5-C4-N3	-3.58	119.90	124.08
4	A	503[A]	F54	C04-C08-C06	3.56	119.50	116.20
4	B	503[A]	F54	C04-C08-C06	3.42	119.38	116.20
4	B	503[A]	F54	C12-C09-C08	-3.23	115.67	120.91
2	B	501	FMN	C1'-N10-C9A	3.21	120.82	118.29
4	B	503[B]	F54	C08-C06-N05	-3.20	122.51	125.19

Continued on next page...

Continued from previous page...

Mol	Chain	Res	Type	Atoms	Z	Observed(°)	Ideal(°)
4	A	503[A]	F54	C08-C06-CL07	-3.20	116.16	120.19
4	A	503[B]	F54	C08-C06-N05	-3.13	122.58	125.19
2	B	501	FMN	C5A-C9A-N10	3.07	119.94	117.72
4	B	503[A]	F54	C28-C15-N16	-2.99	120.31	123.23
4	B	503[B]	F54	C28-C15-N16	-2.99	120.31	123.23
4	B	503[A]	F54	CL07-C06-N05	2.99	120.60	115.56
4	A	503[B]	F54	C25-C24-C23	2.83	122.42	119.51
4	A	503[A]	F54	C25-C24-C23	2.83	122.42	119.51
2	B	501	FMN	C4A-C4-N3	-2.77	119.65	123.43
4	A	503[B]	F54	C28-C24-C23	-2.60	117.36	119.56
4	A	503[A]	F54	C28-C24-C23	-2.60	117.36	119.56
2	A	501	FMN	C4A-C4-N3	-2.60	119.88	123.43
4	B	503[A]	F54	C15-N16-C17	2.58	122.51	117.27
4	B	503[B]	F54	C15-N16-C17	2.58	122.51	117.27
4	A	503[A]	F54	C10-C09-C08	2.57	125.07	120.91
2	A	501	FMN	C4-C4A-C10	-2.52	118.28	119.95
4	B	503[A]	F54	C10-C09-C08	2.50	124.97	120.91
2	A	501	FMN	C4-C4A-N5	2.45	121.40	118.60
2	B	501	FMN	C4-C4A-N5	2.41	121.35	118.60
2	B	501	FMN	C10-C4A-N5	-2.34	119.64	121.26
4	A	503[B]	F54	C28-C15-N16	-2.33	120.95	123.23
4	A	503[A]	F54	C28-C15-N16	-2.33	120.95	123.23
4	B	503[A]	F54	C08-C06-CL07	-2.29	117.30	120.19
4	B	503[A]	F54	C23-C17-N16	-2.25	120.42	122.81
4	B	503[B]	F54	C23-C17-N16	-2.25	120.42	122.81
4	A	503[A]	F54	C01-C02-N05	2.24	120.14	116.56
2	B	501	FMN	C9A-N10-C10	-2.23	118.98	121.91
2	A	501	FMN	C9A-N10-C10	-2.21	119.01	121.91
4	B	503[A]	F54	C03-C04-C08	-2.11	116.72	120.33
4	B	503[B]	F54	C01-C02-N05	2.10	119.92	116.56
4	B	503[B]	F54	CL07-C06-N05	2.01	118.95	115.56

There are no chirality outliers.

All (16) torsion outliers are listed below:

Mol	Chain	Res	Type	Atoms
5	A	504	ZWI	C8-C10-C9-C11
2	A	501	FMN	C2'-C3'-C4'-O4'
2	B	501	FMN	C2'-C3'-C4'-O4'
5	B	505	ZWI	C12-C11-C9-C10
5	B	505	ZWI	C9-C11-C12-C13
5	A	504	ZWI	C9-C10-C8-C7

Continued on next page...

Continued from previous page...

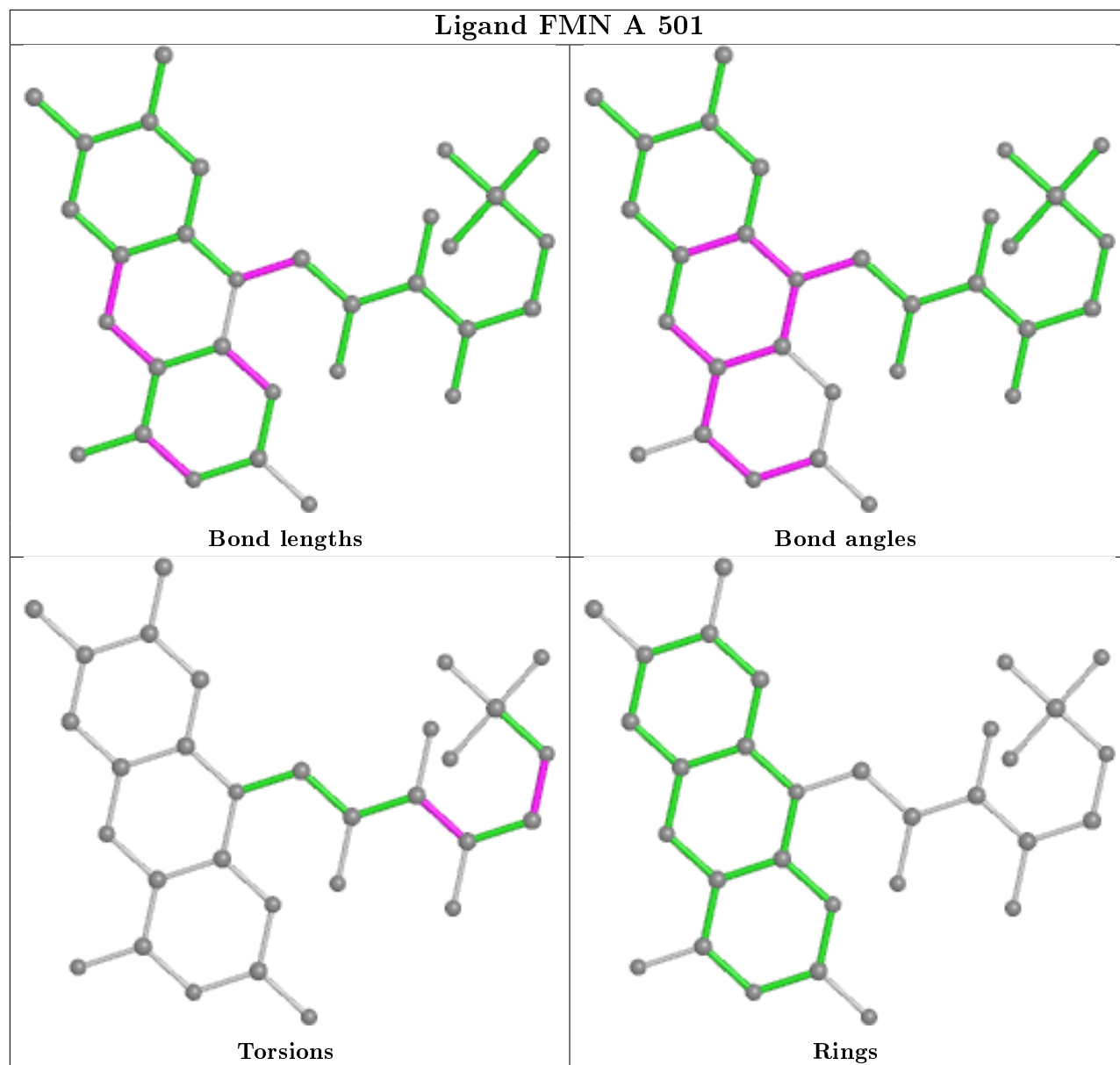
Mol	Chain	Res	Type	Atoms
2	A	501	FMN	C4'-C5'-O5'-P
2	B	501	FMN	C4'-C5'-O5'-P
5	A	504	ZWI	C6-C7-C8-C10
2	A	501	FMN	O3'-C3'-C4'-O4'
2	B	501	FMN	O3'-C3'-C4'-O4'
5	A	504	ZWI	C5-C6-C7-C8
2	B	501	FMN	C2'-C3'-C4'-C5'
2	B	501	FMN	O3'-C3'-C4'-C5'
5	B	505	ZWI	C8-C10-C9-C11
2	A	501	FMN	O3'-C3'-C4'-C5'

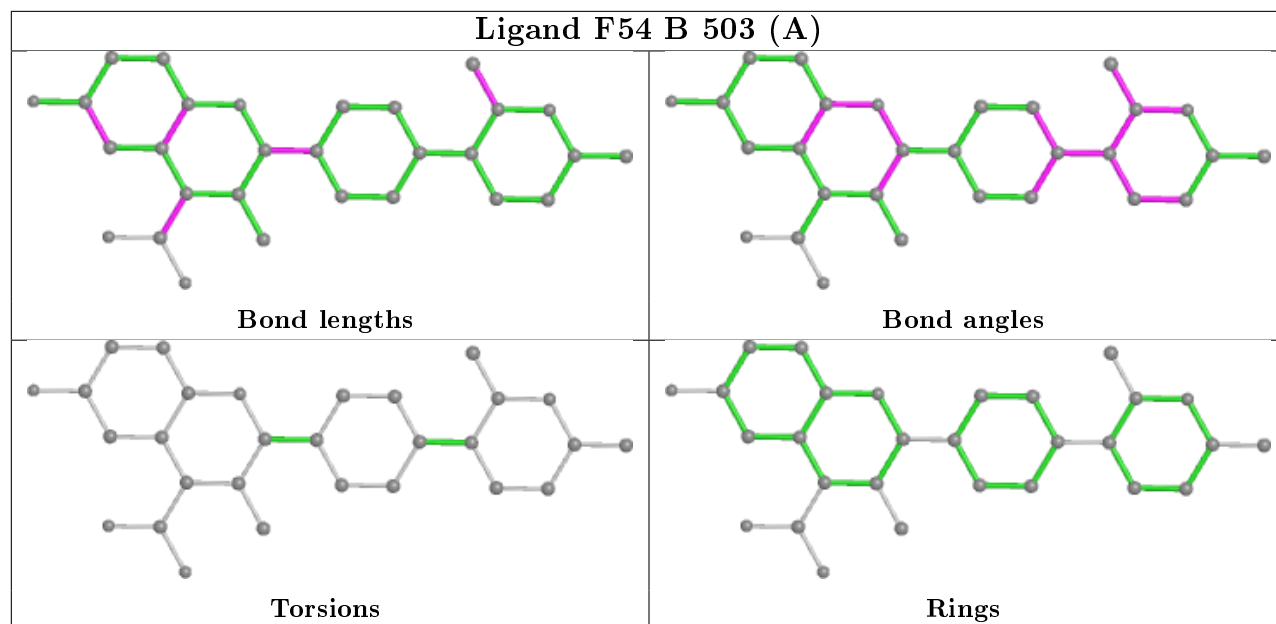
There are no ring outliers.

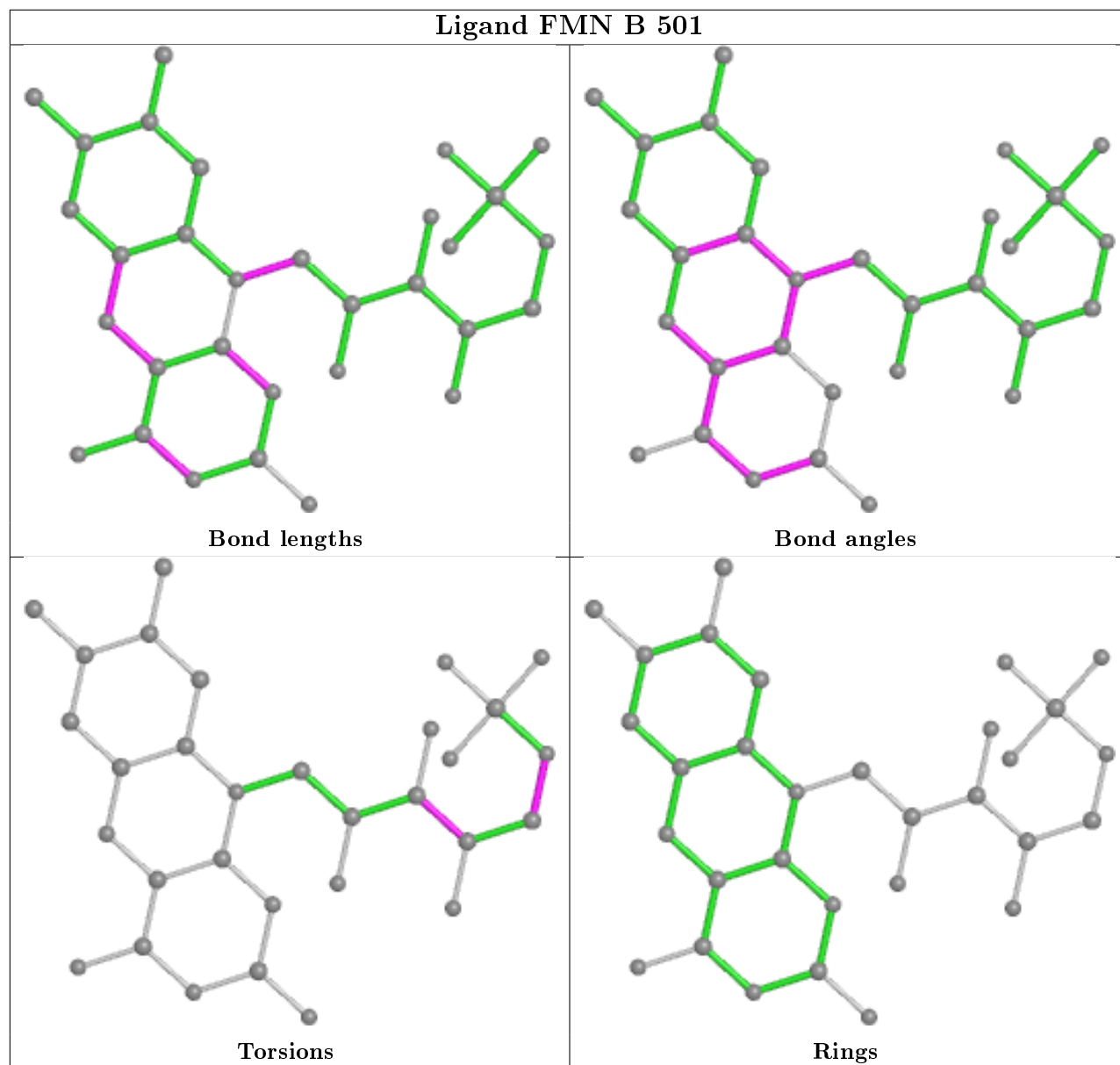
6 monomers are involved in 6 short contacts:

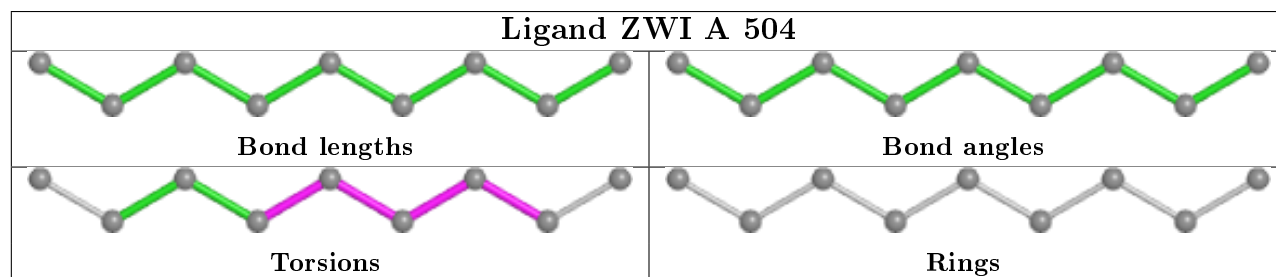
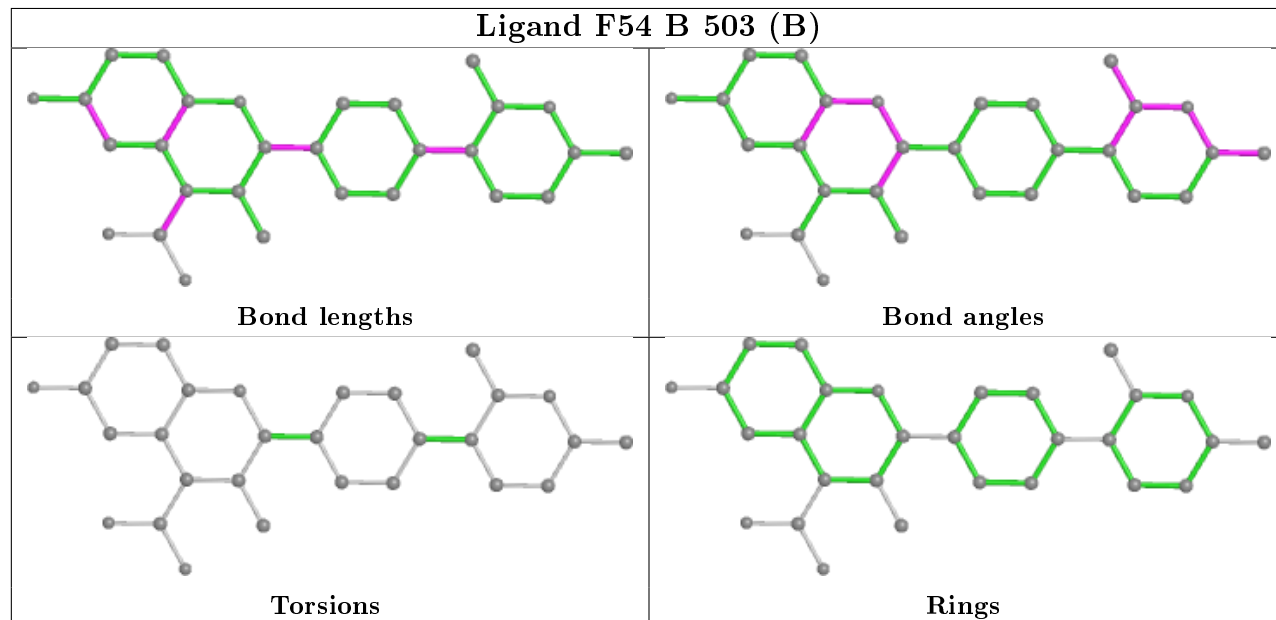
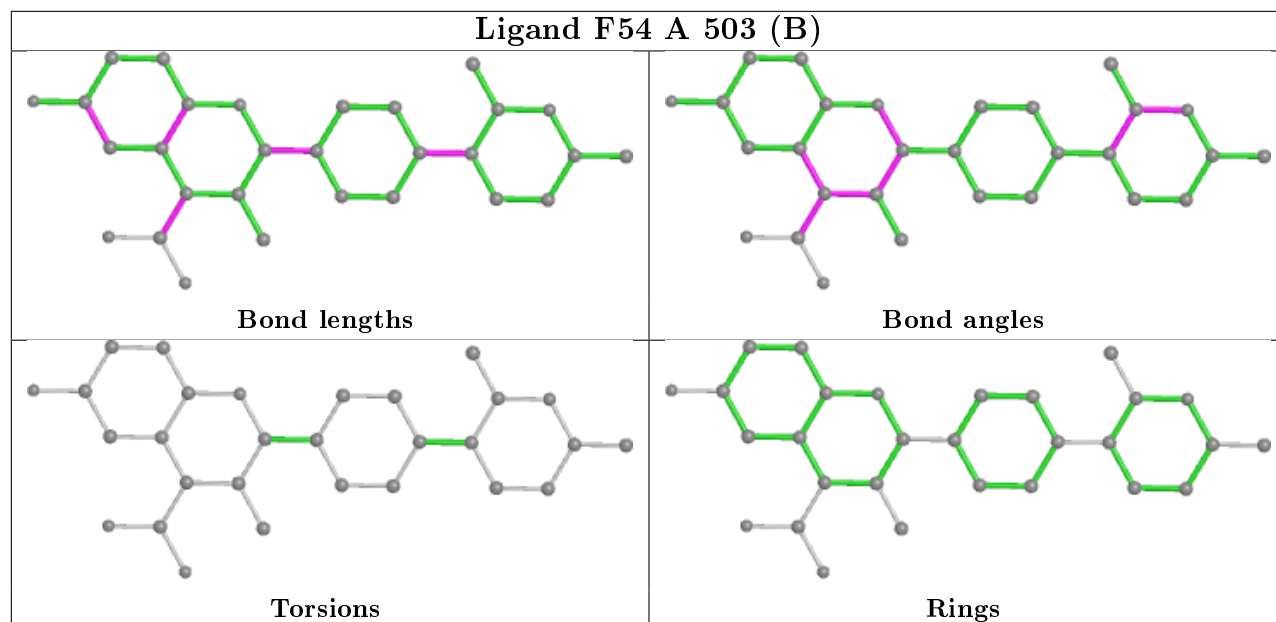
Mol	Chain	Res	Type	Clashes	Symm-Clashes
2	A	501	FMN	1	0
2	B	501	FMN	1	0
4	A	503[B]	F54	1	0
4	B	503[B]	F54	1	0
5	A	504	ZWI	2	0
4	A	503[A]	F54	1	0

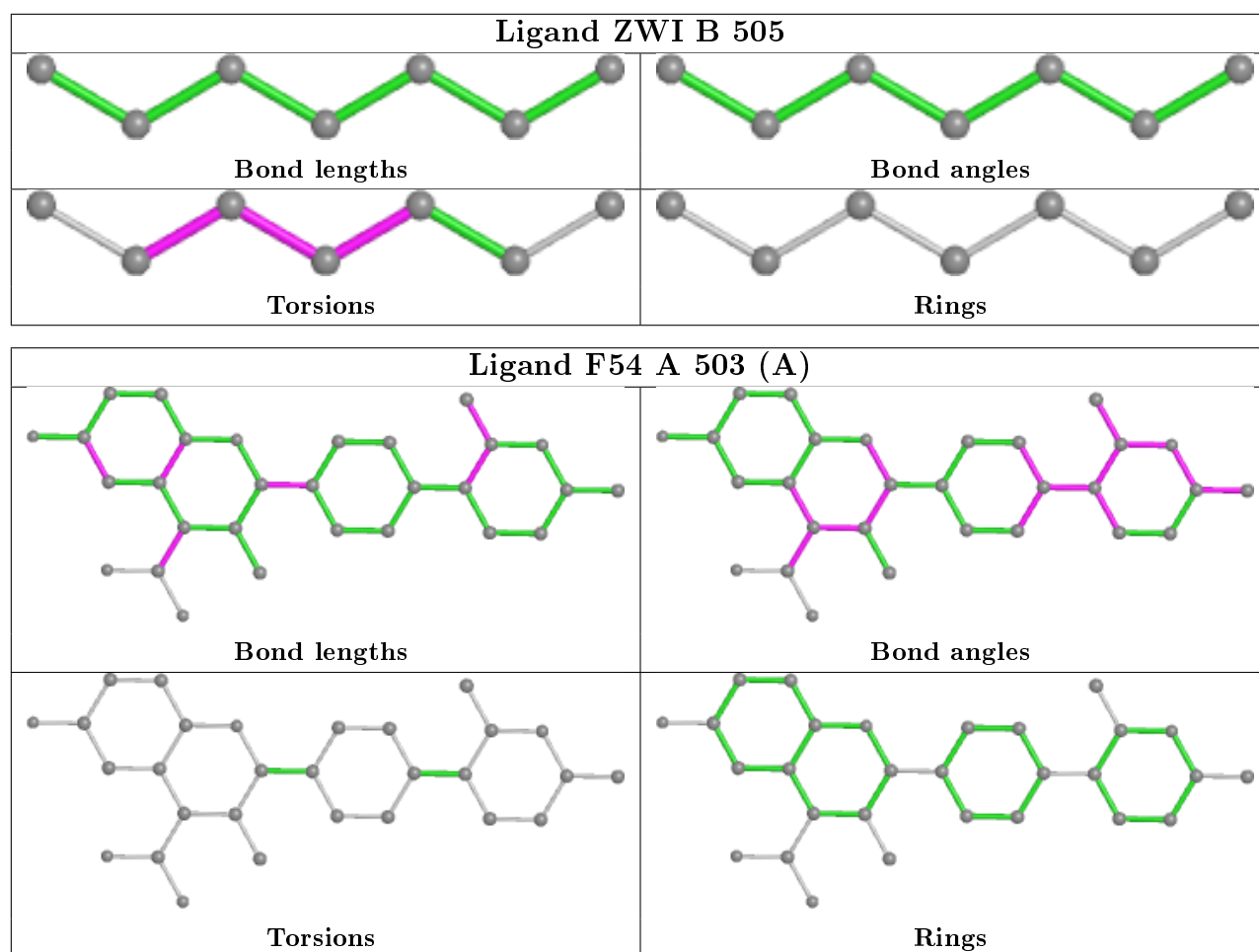
The following is a two-dimensional graphical depiction of Mogul quality analysis of bond lengths, bond angles, torsion angles, and ring geometry for all instances of the Ligand of Interest. In addition, ligands with molecular weight > 250 and outliers as shown on the validation Tables will also be included. For torsion angles, if less than 5% of the Mogul distribution of torsion angles is within 10 degrees of the torsion angle in question, then that torsion angle is considered an outlier. Any bond that is central to one or more torsion angles identified as an outlier by Mogul will be highlighted in the graph. For rings, the root-mean-square deviation (RMSD) between the ring in question and similar rings identified by Mogul is calculated over all ring torsion angles. If the average RMSD is greater than 60 degrees and the minimal RMSD between the ring in question and any Mogul-identified rings is also greater than 60 degrees, then that ring is considered an outlier. The outliers are highlighted in purple. The color gray indicates Mogul did not find sufficient equivalents in the CSD to analyse the geometry.











5.7 Other polymers [i](#)

There are no such residues in this entry.

5.8 Polymer linkage issues [i](#)

There are no chain breaks in this entry.

6 Fit of model and data

6.1 Protein, DNA and RNA chains

In the following table, the column labelled ‘#RSRZ> 2’ contains the number (and percentage) of RSRZ outliers, followed by percent RSRZ outliers for the chain as percentile scores relative to all X-ray entries and entries of similar resolution. The OWAB column contains the minimum, median, 95th percentile and maximum values of the occupancy-weighted average B-factor per residue. The column labelled ‘Q< 0.9’ lists the number of (and percentage) of residues with an average occupancy less than 0.9.

Mol	Chain	Analysed	<RSRZ>	#RSRZ>2	OWAB(Å ²)	Q<0.9
1	A	350/374 (93%)	-0.21	7 (2%) 65 65	7, 14, 29, 54	0
1	B	349/374 (93%)	-0.12	13 (3%) 41 39	6, 13, 31, 57	0
All	All	699/748 (93%)	-0.17	20 (2%) 51 50	6, 13, 30, 57	0

All (20) RSRZ outliers are listed below:

Mol	Chain	Res	Type	RSRZ
1	B	68	LEU	6.5
1	B	67	LEU	6.2
1	B	247	VAL	5.3
1	A	189	VAL	5.2
1	A	67	LEU	4.6
1	A	247	VAL	4.4
1	B	215	SER	3.4
1	B	37	PHE	3.2
1	A	66	GLY	3.2
1	B	76	SER	3.1
1	B	189	VAL	3.1
1	A	248	HIS	2.8
1	B	248	HIS	2.8
1	B	291	ALA	2.6
1	A	62	PHE	2.5
1	B	66	GLY	2.5
1	B	187	THR	2.4
1	B	225	GLN	2.4
1	B	245	ARG	2.0
1	A	68	LEU	2.0

6.2 Non-standard residues in protein, DNA, RNA chains ⓘ

There are no non-standard protein/DNA/RNA residues in this entry.

6.3 Carbohydrates ⓘ

There are no carbohydrates in this entry.

6.4 Ligands ⓘ

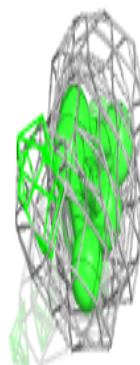
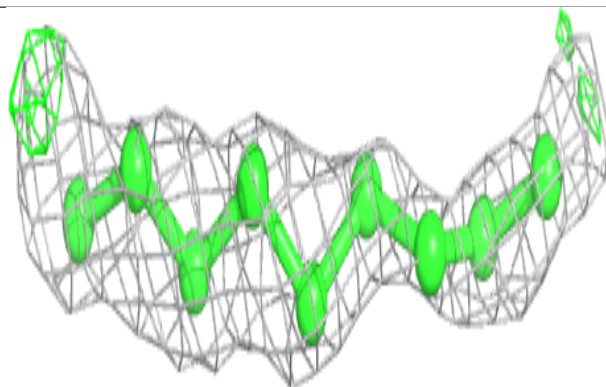
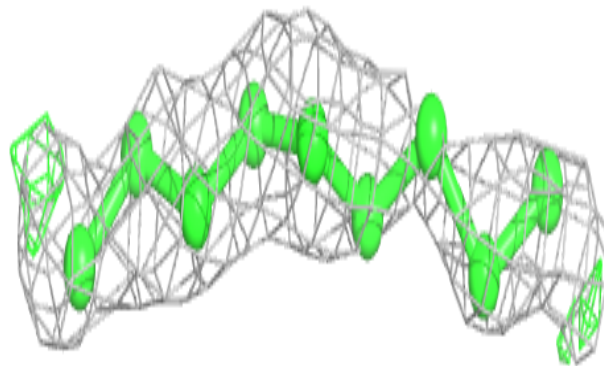
In the following table, the Atoms column lists the number of modelled atoms in the group and the number defined in the chemical component dictionary. The B-factors column lists the minimum, median, 95th percentile and maximum values of B factors of atoms in the group. The column labelled 'Q< 0.9' lists the number of atoms with occupancy less than 0.9.

Mol	Type	Chain	Res	Atoms	RSCC	RSR	B-factors(Å ²)	Q<0.9
5	ZWI	A	504	9/20	0.75	0.24	32,36,38,41	0
5	ZWI	B	504	7/20	0.86	0.17	32,34,39,45	0
5	ZWI	B	505	7/20	0.88	0.12	24,32,38,38	0
4	F54	B	503[B]	29/29	0.93	0.09	7,12,22,27	8
4	F54	B	503[A]	29/29	0.93	0.09	7,12,21,28	8
4	F54	A	503[B]	29/29	0.93	0.10	7,13,23,27	8
4	F54	A	503[A]	29/29	0.93	0.10	7,12,22,24	8
3	ORO	A	502	11/11	0.96	0.07	8,10,14,15	0
2	FMN	A	501	31/31	0.97	0.08	5,7,9,10	0
3	ORO	B	502	11/11	0.97	0.06	8,9,12,12	0
2	FMN	B	501	31/31	0.98	0.09	4,7,8,11	0

The following is a graphical depiction of the model fit to experimental electron density of all instances of the Ligand of Interest. In addition, ligands with molecular weight > 250 and outliers as shown on the geometry validation Tables will also be included. Each fit is shown from different orientation to approximate a three-dimensional view.

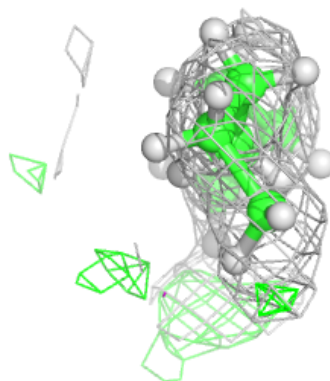
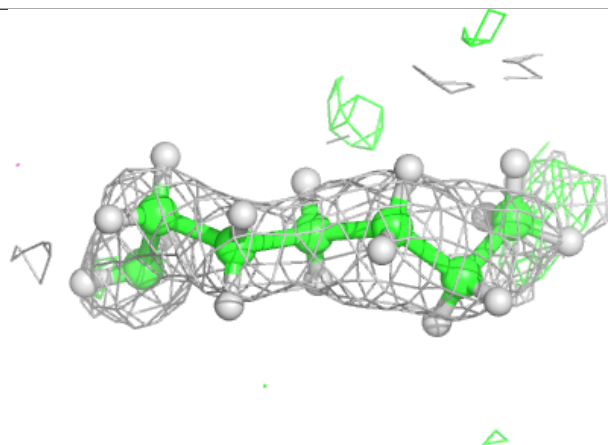
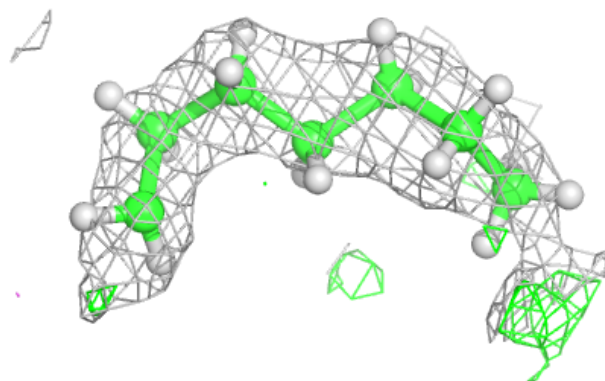
Electron density around ZWI A 504:

$2mF_o-DF_c$ (at 0.7 rmsd) in gray
 mF_o-DF_c (at 3 rmsd) in purple (negative)
and green (positive)



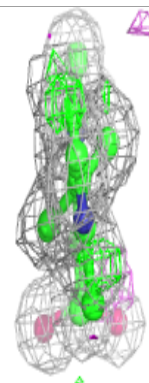
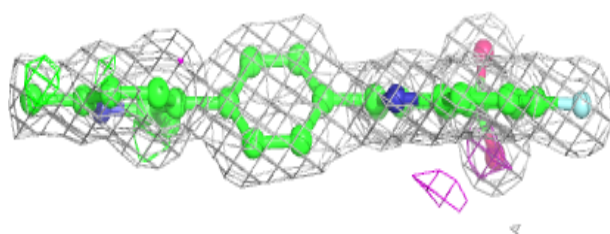
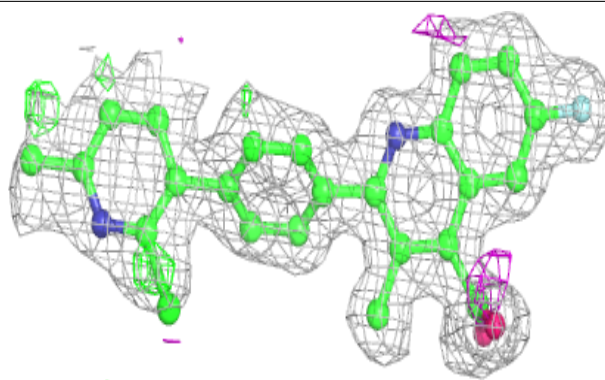
Electron density around ZWI B 505:

$2mF_o-DF_c$ (at 0.7 rmsd) in gray
 mF_o-DF_c (at 3 rmsd) in purple (negative)
and green (positive)

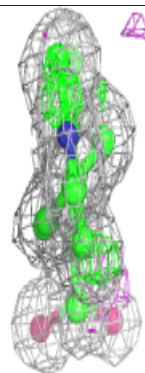
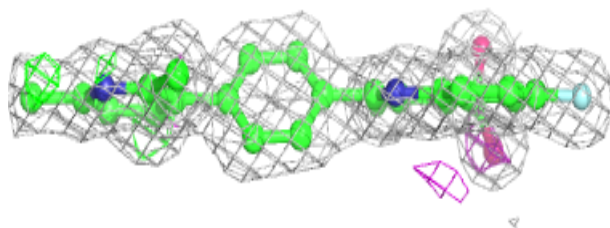
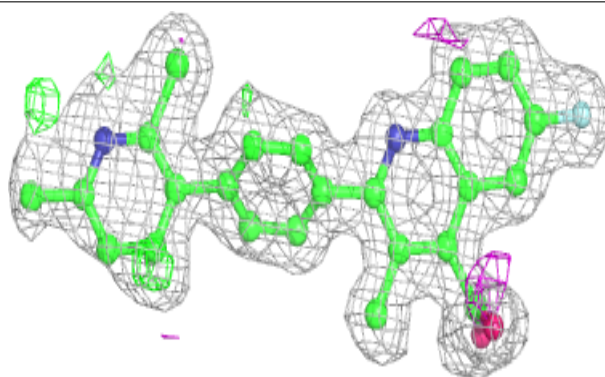


Electron density around F54 B 503 (B):

$2mF_o - DF_c$ (at 0.7 rmsd) in gray
 $mF_o - DF_c$ (at 3 rmsd) in purple (negative)
and green (positive)

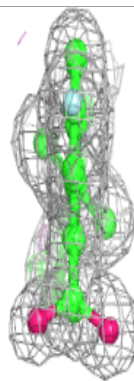
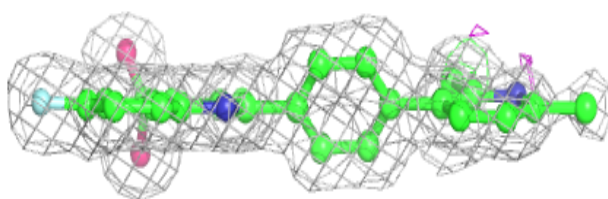
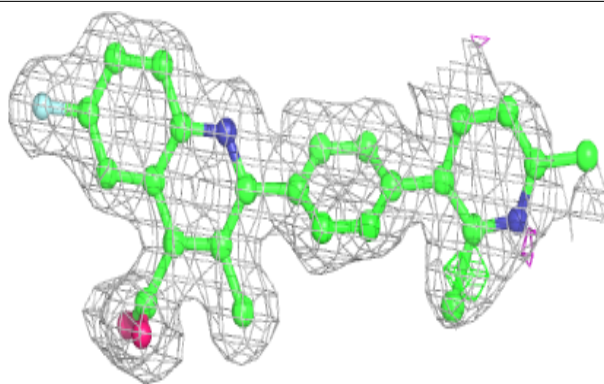
**Electron density around F54 B 503 (A):**

$2mF_o - DF_c$ (at 0.7 rmsd) in gray
 $mF_o - DF_c$ (at 3 rmsd) in purple (negative)
and green (positive)

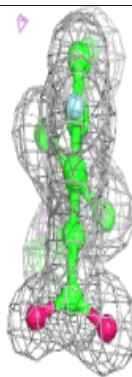
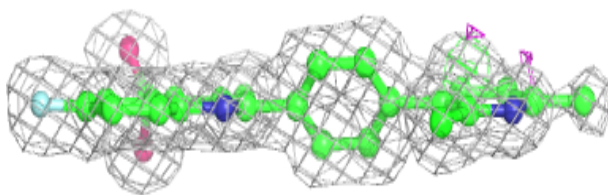
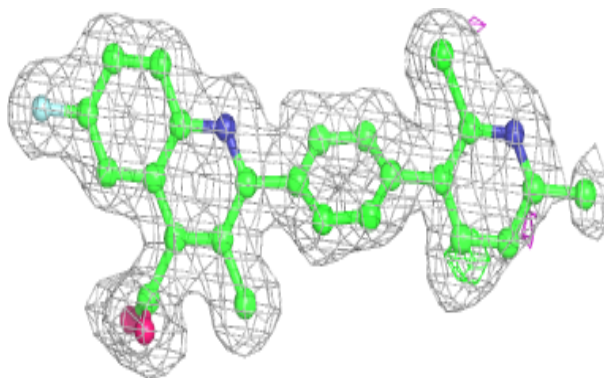


Electron density around F54 A 503 (B):

$2mF_o-DF_c$ (at 0.7 rmsd) in gray
 mF_o-DF_c (at 3 rmsd) in purple (negative)
and green (positive)

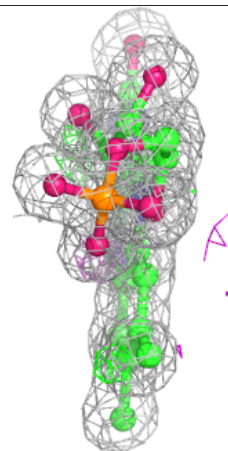
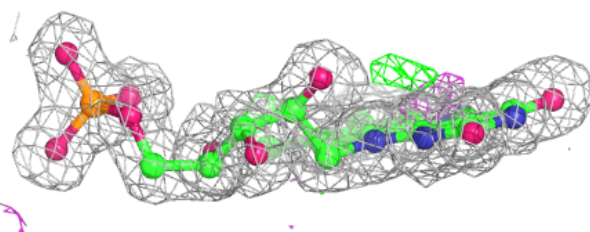
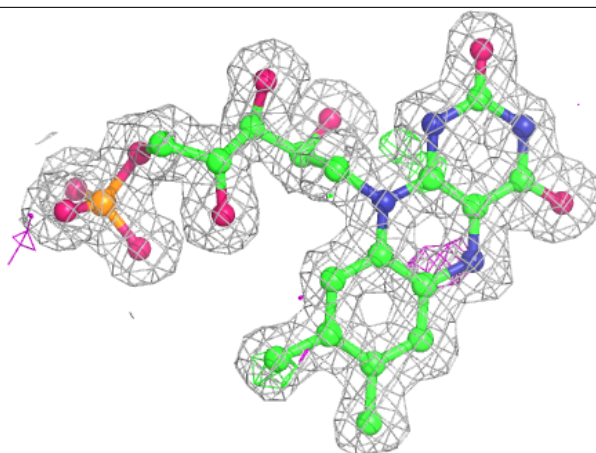
**Electron density around F54 A 503 (A):**

$2mF_o-DF_c$ (at 0.7 rmsd) in gray
 mF_o-DF_c (at 3 rmsd) in purple (negative)
and green (positive)



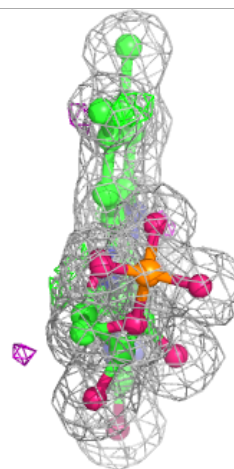
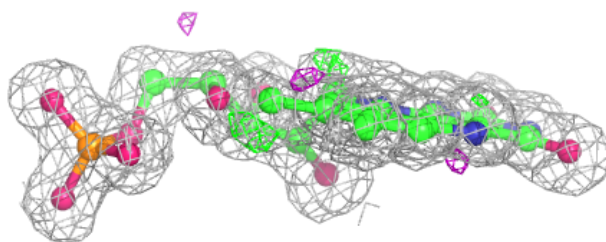
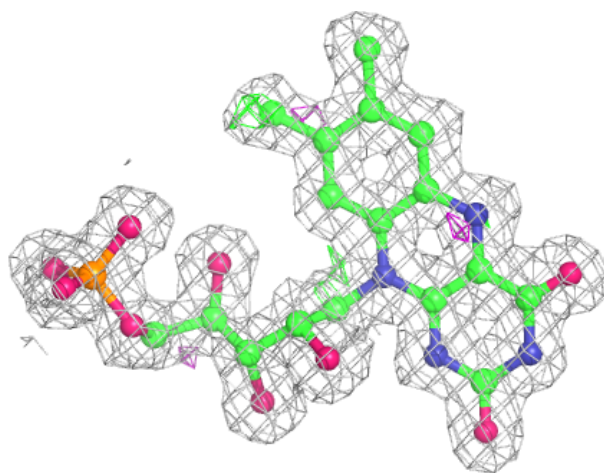
Electron density around FMN A 501:

$2mF_o - DF_c$ (at 0.7 rmsd) in gray
 $mF_o - DF_c$ (at 3 rmsd) in purple (negative)
and green (positive)



Electron density around FMN B 501:

$2mF_o-DF_c$ (at 0.7 rmsd) in gray
 mF_o-DF_c (at 3 rmsd) in purple (negative)
and green (positive)



6.5 Other polymers [i](#)

There are no such residues in this entry.