



Full wwPDB X-ray Structure Validation Report ⓘ

May 30, 2020 – 12:10 am BST

PDB ID : 4CK9
Title : STEROL 14-ALPHA DEMETHYLASE (CYP51)FROM TRYPANOSOMA CRUZI IN COMPLEX WITH (S)-1-(4-chlorophenyl)-2-(1H-imidazol-1-yl)ethyl 4- isopropylphenylcarbamate (LFT)
Authors : Friggeri, L.; Wawrzak, Z.; Tortorella, S.; Lepesheva, G.I.
Deposited on : 2013-12-31
Resolution : 2.74 Å(reported)

This is a Full wwPDB X-ray Structure Validation Report for a publicly released PDB entry.

We welcome your comments at validation@mail.wwpdb.org

A user guide is available at

<https://www.wwpdb.org/validation/2017/XrayValidationReportHelp>

with specific help available everywhere you see the ⓘ symbol.

The following versions of software and data (see [references ⓘ](#)) were used in the production of this report:

MolProbity : 4.02b-467
Mogul : 1.8.5 (274361), CSD as541be (2020)
Xtriage (Phenix) : 1.13
EDS : 2.11
buster-report : 1.1.7 (2018)
Percentile statistics : 20191225.v01 (using entries in the PDB archive December 25th 2019)
Refmac : 5.8.0158
CCP4 : 7.0.044 (Gargrove)
Ideal geometry (proteins) : Engh & Huber (2001)
Ideal geometry (DNA, RNA) : Parkinson et al. (1996)
Validation Pipeline (wwPDB-VP) : 2.11

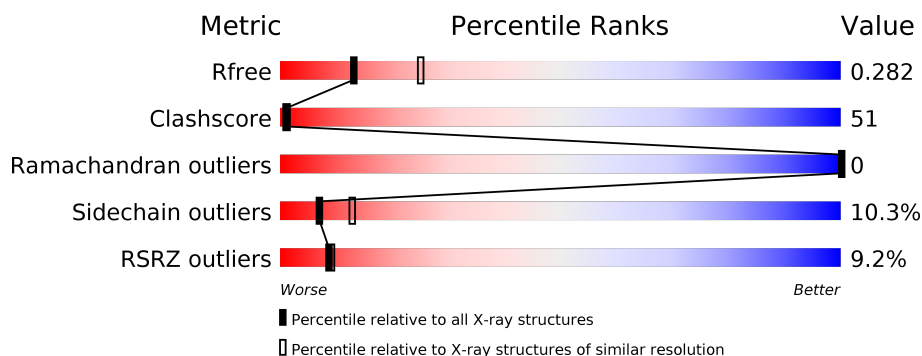
1 Overall quality at a glance

The following experimental techniques were used to determine the structure:

X-RAY DIFFRACTION

The reported resolution of this entry is 2.74 Å.

Percentile scores (ranging between 0-100) for global validation metrics of the entry are shown in the following graphic. The table shows the number of entries on which the scores are based.



Metric	Whole archive (#Entries)	Similar resolution (#Entries, resolution range(Å))
R_{free}	130704	1271 (2.76-2.72)
Clashscore	141614	1322 (2.76-2.72)
Ramachandran outliers	138981	1297 (2.76-2.72)
Sidechain outliers	138945	1298 (2.76-2.72)
RSRZ outliers	127900	1243 (2.76-2.72)

The table below summarises the geometric issues observed across the polymeric chains and their fit to the electron density. The red, orange, yellow and green segments on the lower bar indicate the fraction of residues that contain outliers for ≥ 3 , 2, 1 and 0 types of geometric quality criteria respectively. A grey segment represents the fraction of residues that are not modelled. The numeric value for each fraction is indicated below the corresponding segment, with a dot representing fractions $\leq 5\%$. The upper red bar (where present) indicates the fraction of residues that have poor fit to the electron density. The numeric value is given above the bar.

Mol	Chain	Length	Quality of chain
1	A	460	<div> <div>9%</div> <div>41%</div> <div>46%</div> <div>7%</div> <div>6%</div> </div>

The following table lists non-polymeric compounds, carbohydrate monomers and non-standard residues in protein, DNA, RNA chains that are outliers for geometric or electron-density-fit criteria:

Mol	Type	Chain	Res	Chirality	Geometry	Clashes	Electron density
3	LFT	A	1490	-	-	X	-

2 Entry composition

There are 4 unique types of molecules in this entry. The entry contains 3562 atoms, of which 0 are hydrogens and 0 are deuteriums.

In the tables below, the ZeroOcc column contains the number of atoms modelled with zero occupancy, the AltConf column contains the number of residues with at least one atom in alternate conformation and the Trace column contains the number of residues modelled with at most 2 atoms.

- Molecule 1 is a protein called STEROL 14-ALPHA DEMETHYLASE.

Mol	Chain	Residues	Atoms					ZeroOcc	AltConf	Trace
1	A	434	Total	C	N	O	S	0	0	0
			3467	2215	607	617	28			

There are 10 discrepancies between the modelled and reference sequences:

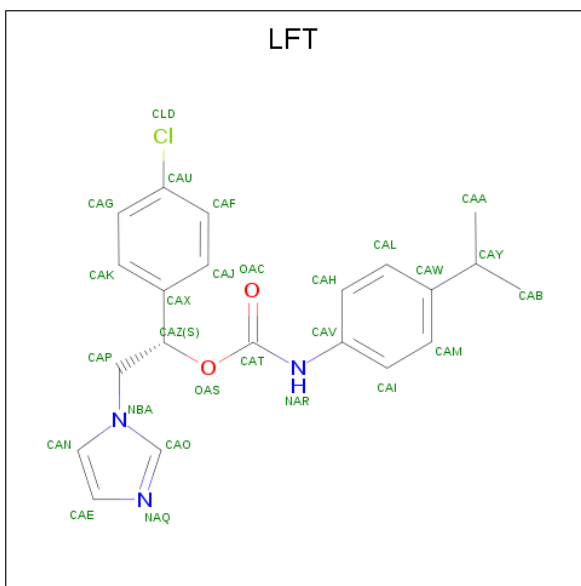
Chain	Residue	Modelled	Actual	Comment	Reference
A	28	ALA	-	expression tag	UNP Q7Z1V1
A	29	LYS	-	expression tag	UNP Q7Z1V1
A	30	LYS	-	expression tag	UNP Q7Z1V1
A	31	THR	-	expression tag	UNP Q7Z1V1
A	482	HIS	-	expression tag	UNP Q7Z1V1
A	483	HIS	-	expression tag	UNP Q7Z1V1
A	484	HIS	-	expression tag	UNP Q7Z1V1
A	485	HIS	-	expression tag	UNP Q7Z1V1
A	486	HIS	-	expression tag	UNP Q7Z1V1
A	487	HIS	-	expression tag	UNP Q7Z1V1

- Molecule 2 is PROTOPORPHYRIN IX CONTAINING FE (three-letter code: HEM) (formula: $C_{34}H_{32}FeN_4O_4$).



Mol	Chain	Residues	Atoms					ZeroOcc	AltConf
2	A	1	Total	C	Fe	N	O	0	0
			43	34	1	4	4		

- Molecule 3 is (1S)-1-(4-chlorophenyl)-2-(1H-imidazol-1-yl)ethyl [4-(propan-2-yl)phenyl]carbamate (three-letter code: LFT) (formula: $C_{21}H_{22}ClN_3O_2$).



Mol	Chain	Residues	Atoms					ZeroOcc	AltConf
3	A	1	Total	C	Cl	N	O	0	0
			27	21	1	3	2		

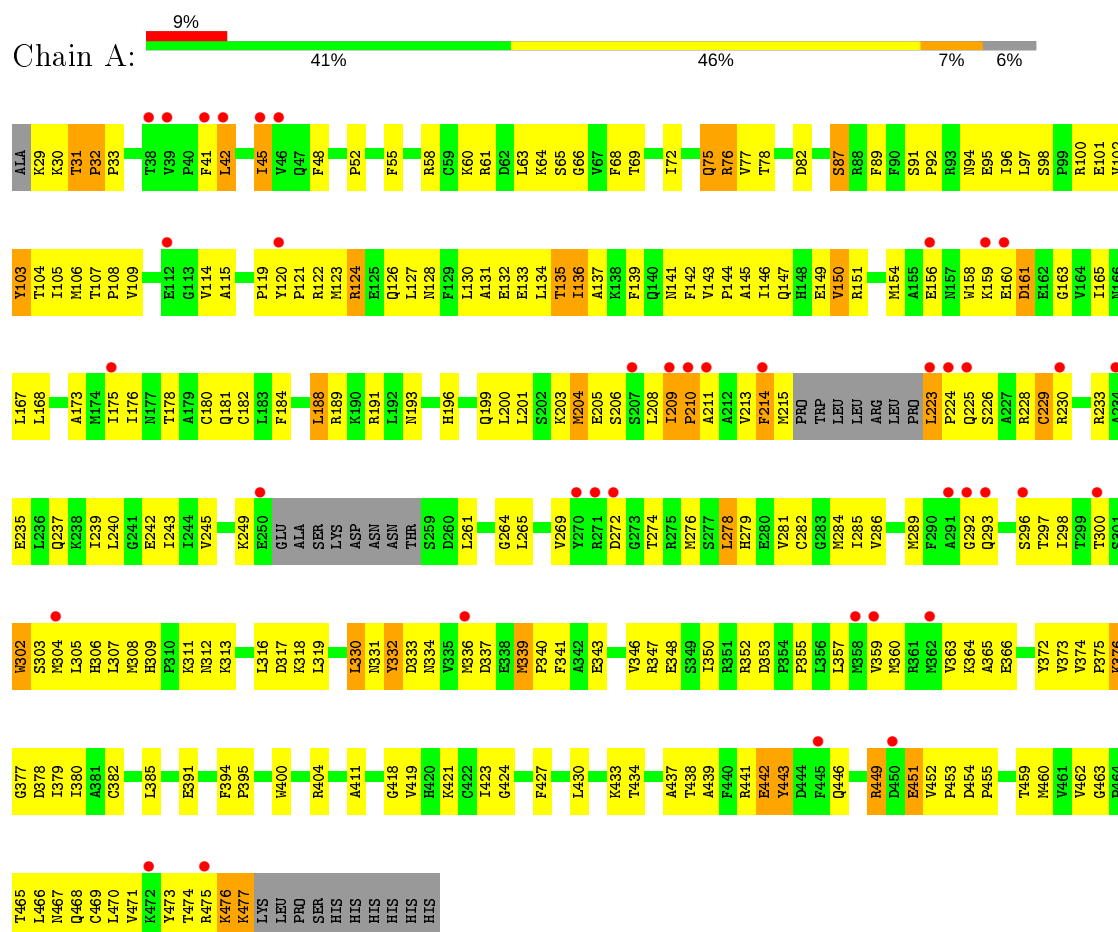
- Molecule 4 is water.

Mol	Chain	Residues	Atoms		ZeroOcc	AltConf
4	A	25	Total 25	O 25	0	0

3 Residue-property plots [i](#)

These plots are drawn for all protein, RNA and DNA chains in the entry. The first graphic for a chain summarises the proportions of the various outlier classes displayed in the second graphic. The second graphic shows the sequence view annotated by issues in geometry and electron density. Residues are color-coded according to the number of geometric quality criteria for which they contain at least one outlier: green = 0, yellow = 1, orange = 2 and red = 3 or more. A red dot above a residue indicates a poor fit to the electron density ($RSRZ > 2$). Stretches of 2 or more consecutive residues without any outlier are shown as a green connector. Residues present in the sample, but not in the model, are shown in grey.

• Molecule 1: STEROL 14-ALPHA DEMETHYLASE



4 Data and refinement statistics

Property	Value	Source
Space group	P 31 2 1	Depositor
Cell constants a, b, c, α , β , γ	62.95Å 62.95Å 222.44Å 90.00° 90.00° 120.00°	Depositor
Resolution (Å)	30.00 – 2.74 28.97 – 2.74	Depositor EDS
% Data completeness (in resolution range)	99.4 (30.00-2.74) 99.5 (28.97-2.74)	Depositor EDS
R_{merge}	0.05	Depositor
R_{sym}	(Not available)	Depositor
$\langle I/\sigma(I) \rangle$ ¹	4.84 (at 2.72Å)	Xtriage
Refinement program	REFMAC 5.8.0049	Depositor
R, R_{free}	0.269 , 0.296 0.269 , 0.282	Depositor DCC
R_{free} test set	723 reflections (5.13%)	wwPDB-VP
Wilson B-factor (Å ²)	73.7	Xtriage
Anisotropy	0.289	Xtriage
Bulk solvent k_{sol} (e/Å ³), B_{sol} (Å ²)	0.29 , 63.3	EDS
L-test for twinning ²	$\langle L \rangle = 0.45$, $\langle L^2 \rangle = 0.28$	Xtriage
Estimated twinning fraction	0.057 for -h,-k,l	Xtriage
F_o, F_c correlation	0.91	EDS
Total number of atoms	3562	wwPDB-VP
Average B, all atoms (Å ²)	90.0	wwPDB-VP

Xtriage's analysis on translational NCS is as follows: *The largest off-origin peak in the Patterson function is 4.53% of the height of the origin peak. No significant pseudotranslation is detected.*

¹Intensities estimated from amplitudes.

²Theoretical values of $\langle |L| \rangle$, $\langle L^2 \rangle$ for acentric reflections are 0.5, 0.333 respectively for untwinned datasets, and 0.375, 0.2 for perfectly twinned datasets.

5 Model quality [i](#)

5.1 Standard geometry [i](#)

Bond lengths and bond angles in the following residue types are not validated in this section: HEM, LFT

The Z score for a bond length (or angle) is the number of standard deviations the observed value is removed from the expected value. A bond length (or angle) with $|Z| > 5$ is considered an outlier worth inspection. RMSZ is the root-mean-square of all Z scores of the bond lengths (or angles).

Mol	Chain	Bond lengths		Bond angles	
		RMSZ	$\# Z > 5$	RMSZ	$\# Z > 5$
1	A	0.29	2/3546 (0.1%)	0.48	2/4787 (0.0%)

All (2) bond length outliers are listed below:

Mol	Chain	Res	Type	Atoms	Z	Observed(Å)	Ideal(Å)
1	A	210	PRO	N-CD	5.51	1.55	1.47
1	A	32	PRO	N-CD	5.40	1.55	1.47

All (2) bond angle outliers are listed below:

Mol	Chain	Res	Type	Atoms	Z	Observed(°)	Ideal(°)
1	A	209	ILE	C-N-CD	5.63	140.23	128.40
1	A	31	THR	C-N-CD	5.35	139.63	128.40

There are no chirality outliers.

There are no planarity outliers.

5.2 Too-close contacts [i](#)

In the following table, the Non-H and H(model) columns list the number of non-hydrogen atoms and hydrogen atoms in the chain respectively. The H(added) column lists the number of hydrogen atoms added and optimized by MolProbity. The Clashes column lists the number of clashes within the asymmetric unit, whereas Symm-Clashes lists symmetry related clashes.

Mol	Chain	Non-H	H(model)	H(added)	Clashes	Symm-Clashes
1	A	3467	0	3495	344	0
2	A	43	0	30	18	0
3	A	27	0	22	11	0
4	A	25	0	0	6	0

Continued on next page...

Continued from previous page...

Mol	Chain	Non-H	H(model)	H(added)	Clashes	Symm-Clashes
All	All	3562	0	3547	358	0

The all-atom clashscore is defined as the number of clashes found per 1000 atoms (including hydrogen atoms). The all-atom clashscore for this structure is 51.

All (358) close contacts within the same asymmetric unit are listed below, sorted by their clash magnitude.

Atom-1	Atom-2	Interatomic distance (Å)	Clash overlap (Å)
1:A:103:TYR:CD2	3:A:1490:LFT:HAG	1.47	1.47
1:A:147:GLN:NE2	1:A:330:LEU:HD12	1.23	1.41
1:A:104:THR:O	1:A:107:THR:HG23	1.26	1.27
1:A:176:ILE:HB	1:A:293:GLN:OE1	1.38	1.24
1:A:33:PRO:HG2	1:A:63:LEU:HD21	1.22	1.17
1:A:103:TYR:CD2	3:A:1490:LFT:CAG	2.26	1.17
1:A:58:ARG:HA	1:A:61:ARG:HH12	1.14	1.13
1:A:136:ILE:H	1:A:136:ILE:HD13	1.15	1.11
1:A:147:GLN:NE2	1:A:330:LEU:CD1	2.18	1.06
1:A:132:GLU:C	1:A:135:THR:HG22	1.75	1.06
1:A:124:ARG:HH12	1:A:128:ASN:ND2	1.54	1.05
1:A:33:PRO:CG	1:A:63:LEU:HD21	1.87	1.04
1:A:223:LEU:HD23	1:A:224:PRO:HD2	1.40	1.03
1:A:223:LEU:HD22	1:A:225:GLN:H	1.23	1.02
1:A:150:VAL:HG11	1:A:438:THR:HG21	1.38	1.02
1:A:147:GLN:CD	1:A:330:LEU:HD12	1.78	1.02
1:A:281:VAL:O	1:A:285:ILE:HD12	1.61	1.01
1:A:30:LYS:O	1:A:373:VAL:HB	1.61	1.01
1:A:225:GLN:HA	1:A:228:ARG:HB3	1.40	1.00
1:A:150:VAL:CG1	1:A:438:THR:HG21	1.91	1.00
1:A:223:LEU:HD23	1:A:224:PRO:CD	1.96	0.96
1:A:424:GLY:HA3	2:A:1480:HEM:C3C	2.00	0.95
1:A:132:GLU:C	1:A:135:THR:CG2	2.36	0.94
2:A:1480:HEM:HHA	2:A:1480:HEM:HBD1	1.47	0.94
1:A:309:HIS:HE1	1:A:451:GLU:HA	1.34	0.91
1:A:124:ARG:NH1	1:A:128:ASN:HD21	1.68	0.90
1:A:124:ARG:HH12	1:A:128:ASN:HD21	0.90	0.90
1:A:150:VAL:HG11	1:A:438:THR:CG2	2.01	0.90
1:A:147:GLN:HE22	1:A:330:LEU:HD12	1.34	0.90
1:A:352:ARG:NH1	1:A:353:ASP:OD2	2.04	0.90
1:A:103:TYR:HD2	3:A:1490:LFT:CAG	1.73	0.89
1:A:104:THR:O	1:A:107:THR:CG2	2.18	0.88
1:A:31:THR:HG22	1:A:32:PRO:HD2	1.56	0.88

Continued on next page...

Continued from previous page...

Atom-1	Atom-2	Interatomic distance (Å)	Clash overlap (Å)
1:A:359:VAL:HB	2:A:1480:HEM:O1A	1.74	0.87
1:A:132:GLU:O	1:A:135:THR:CG2	2.22	0.87
1:A:309:HIS:CE1	1:A:451:GLU:HA	2.09	0.86
1:A:149:GLU:HB3	1:A:178:THR:HG22	1.55	0.86
1:A:438:THR:O	1:A:441:ARG:HB3	1.76	0.85
1:A:98:SER:HG	1:A:120:TYR:HH	1.21	0.85
1:A:224:PRO:O	1:A:228:ARG:N	2.10	0.83
1:A:58:ARG:HA	1:A:61:ARG:NH1	1.95	0.82
1:A:103:TYR:HD2	3:A:1490:LFT:HAG	0.91	0.81
1:A:75:GLN:OE1	1:A:76:ARG:N	2.15	0.80
1:A:107:THR:OG1	1:A:108:PRO:HD3	1.82	0.79
1:A:69:THR:HG21	1:A:76:ARG:HD3	1.65	0.78
1:A:424:GLY:HA3	2:A:1480:HEM:C2C	2.19	0.78
1:A:124:ARG:HH11	1:A:124:ARG:HG3	1.48	0.78
1:A:303:SER:O	1:A:307:LEU:HD12	1.84	0.78
1:A:223:LEU:HD22	1:A:225:GLN:N	1.97	0.78
1:A:32:PRO:HB3	1:A:372:TYR:CG	2.18	0.78
1:A:102:VAL:HG11	1:A:360:MET:HB2	1.67	0.77
2:A:1480:HEM:HHC	2:A:1480:HEM:HBB2	1.65	0.77
1:A:213:VAL:HB	1:A:214:PHE:CE1	2.18	0.77
1:A:226:SER:O	1:A:230:ARG:HB2	1.85	0.77
1:A:449:ARG:CZ	1:A:468:GLN:OE1	2.32	0.77
1:A:437:ALA:O	1:A:441:ARG:HB2	1.85	0.76
1:A:363:VAL:HG12	1:A:365:ALA:O	1.86	0.75
1:A:126:GLN:HG2	1:A:284:MET:SD	2.27	0.75
1:A:147:GLN:OE1	1:A:330:LEU:HB2	1.85	0.75
1:A:63:LEU:HD22	1:A:68:PHE:HB3	1.69	0.75
1:A:160:GLU:O	1:A:473:TYR:HE1	1.70	0.74
1:A:136:ILE:CD1	1:A:136:ILE:H	1.92	0.74
1:A:146:ILE:HD11	1:A:434:THR:HB	1.69	0.74
1:A:31:THR:CG2	1:A:32:PRO:HD2	2.16	0.74
1:A:63:LEU:HD23	1:A:65:SER:HB3	1.70	0.74
2:A:1480:HEM:CMA	2:A:1480:HEM:HBA1	2.18	0.74
1:A:32:PRO:HB3	1:A:372:TYR:CD2	2.24	0.73
1:A:395:PRO:O	1:A:404:ARG:NH2	2.22	0.73
1:A:441:ARG:HE	1:A:442:GLU:HB3	1.53	0.73
1:A:100:ARG:HH22	1:A:119:PRO:HA	1.53	0.72
1:A:245:VAL:O	1:A:249:LYS:HG2	1.89	0.72
1:A:309:HIS:HD2	1:A:311:LYS:H	1.38	0.72
1:A:211:ALA:O	1:A:215:MET:HG2	1.90	0.72
1:A:449:ARG:NH1	1:A:468:GLN:OE1	2.23	0.72

Continued on next page...

Continued from previous page...

Atom-1	Atom-2	Interatomic distance (Å)	Clash overlap (Å)
1:A:31:THR:HG22	1:A:32:PRO:CD	2.20	0.72
1:A:284:MET:HG2	3:A:1490:LFT:HABA	1.71	0.71
1:A:173:ALA:HA	1:A:176:ILE:HG22	1.72	0.71
1:A:357:LEU:HG	1:A:385:LEU:HD22	1.72	0.71
1:A:30:LYS:O	1:A:373:VAL:CB	2.37	0.71
1:A:225:GLN:HA	1:A:228:ARG:CB	2.18	0.71
1:A:224:PRO:HG2	1:A:225:GLN:OE1	1.90	0.71
2:A:1480:HEM:CHA	2:A:1480:HEM:HBD1	2.14	0.70
1:A:176:ILE:CB	1:A:293:GLN:OE1	2.30	0.70
1:A:105:ILE:HG22	1:A:208:LEU:HD22	1.73	0.70
1:A:442:GLU:O	1:A:476:LYS:HB2	1.92	0.70
1:A:132:GLU:O	1:A:135:THR:HG21	1.90	0.69
1:A:465:THR:HG21	1:A:468:GLN:HG3	1.74	0.69
1:A:103:TYR:CE2	3:A:1490:LFT:CAG	2.75	0.69
1:A:132:GLU:CA	1:A:135:THR:HG22	2.22	0.69
1:A:443:TYR:N	1:A:476:LYS:NZ	2.40	0.69
1:A:105:ILE:H	1:A:105:ILE:HD12	1.56	0.69
1:A:124:ARG:NH1	1:A:124:ARG:HG3	2.07	0.69
1:A:95:GLU:OE1	1:A:95:GLU:N	2.24	0.69
1:A:76:ARG:HB3	1:A:378:ASP:OD1	1.92	0.68
1:A:209:ILE:HD12	1:A:209:ILE:O	1.93	0.68
1:A:309:HIS:CD2	1:A:311:LYS:HB2	2.29	0.68
1:A:235:GLU:O	1:A:239:ILE:HG13	1.93	0.68
1:A:359:VAL:CB	2:A:1480:HEM:O1A	2.42	0.67
1:A:359:VAL:CG1	2:A:1480:HEM:O1A	2.43	0.66
1:A:452:VAL:HG13	1:A:453:PRO:HD2	1.76	0.66
1:A:465:THR:CG2	1:A:467:ASN:OD1	2.44	0.66
1:A:72:ILE:O	1:A:75:GLN:HB3	1.95	0.66
1:A:150:VAL:O	1:A:154:MET:HG3	1.96	0.66
1:A:136:ILE:N	1:A:136:ILE:HD13	2.00	0.66
2:A:1480:HEM:HMC2	2:A:1480:HEM:HBC2	1.77	0.66
1:A:348:GLU:HG3	1:A:400:TRP:CD1	2.31	0.66
1:A:300:THR:O	1:A:304:MET:HG3	1.96	0.66
1:A:376:LYS:C	1:A:376:LYS:HE3	2.16	0.65
1:A:69:THR:HA	1:A:78:THR:HA	1.79	0.65
1:A:443:TYR:H	1:A:476:LYS:NZ	1.95	0.65
1:A:147:GLN:CD	1:A:330:LEU:CD1	2.59	0.64
1:A:108:PRO:O	1:A:233:ARG:NH1	2.31	0.64
1:A:94:ASN:HA	1:A:97:LEU:O	1.97	0.64
1:A:105:ILE:HD12	1:A:105:ILE:N	2.12	0.64
2:A:1480:HEM:CMC	2:A:1480:HEM:HBC2	2.27	0.63

Continued on next page...

Continued from previous page...

Atom-1	Atom-2	Interatomic distance (Å)	Clash overlap (Å)
1:A:165:ILE:HD11	1:A:473:TYR:HB3	1.81	0.63
1:A:318:LYS:HB3	1:A:341:PHE:CE2	2.33	0.63
1:A:150:VAL:HG12	1:A:438:THR:HG21	1.78	0.63
1:A:443:TYR:N	1:A:476:LYS:HZ3	1.95	0.62
1:A:95:GLU:O	1:A:364:LYS:HB2	2.00	0.62
1:A:124:ARG:NH1	1:A:128:ASN:ND2	2.36	0.62
1:A:240:LEU:HA	1:A:243:ILE:HD12	1.80	0.62
1:A:145:ALA:HB1	1:A:181:GLN:OE1	2.00	0.62
1:A:298:ILE:HG12	1:A:463:GLY:HA3	1.81	0.62
1:A:366:GLU:HG3	1:A:374:VAL:O	1.99	0.61
1:A:223:LEU:CD2	1:A:225:GLN:H	2.07	0.61
1:A:108:PRO:O	1:A:233:ARG:CZ	2.49	0.60
1:A:272:ASP:OD1	1:A:274:THR:OG1	2.13	0.60
1:A:308:MET:O	1:A:313:LYS:HE2	2.01	0.60
1:A:313:LYS:O	1:A:317:ASP:OD2	2.18	0.60
1:A:442:GLU:C	1:A:476:LYS:HB2	2.20	0.60
1:A:476:LYS:O	1:A:477:LYS:CB	2.48	0.60
1:A:281:VAL:HG12	1:A:285:ILE:HD11	1.84	0.60
1:A:191:ARG:NH1	1:A:242:GLU:OE1	2.35	0.59
1:A:309:HIS:HD2	1:A:311:LYS:HB2	1.65	0.59
1:A:203:LYS:HZ1	1:A:228:ARG:HE	1.48	0.59
1:A:442:GLU:OE1	1:A:442:GLU:N	2.34	0.59
1:A:130:LEU:HD23	1:A:423:ILE:HD11	1.85	0.59
1:A:442:GLU:C	1:A:476:LYS:HZ3	2.06	0.59
1:A:391:GLU:O	1:A:395:PRO:HD3	2.02	0.59
1:A:158:TRP:CE3	1:A:443:TYR:HE2	2.20	0.59
1:A:209:ILE:HB	1:A:210:PRO:HD2	1.85	0.59
1:A:452:VAL:CG1	1:A:453:PRO:HD2	2.32	0.59
1:A:309:HIS:CD2	1:A:311:LYS:H	2.20	0.58
1:A:32:PRO:HB3	1:A:372:TYR:CB	2.32	0.58
1:A:94:ASN:HB3	1:A:120:TYR:CE2	2.38	0.58
1:A:42:LEU:HA	4:A:2002:HOH:O	2.03	0.58
1:A:215:MET:SD	1:A:215:MET:N	2.77	0.58
1:A:225:GLN:N	1:A:225:GLN:OE1	2.36	0.58
1:A:105:ILE:CD1	1:A:105:ILE:H	2.15	0.58
1:A:306:HIS:O	1:A:312:ASN:HB2	2.04	0.58
1:A:379:ILE:O	1:A:379:ILE:HG22	2.04	0.58
1:A:60:LYS:CE	1:A:66:GLY:HA2	2.34	0.58
1:A:133:GLU:OE2	1:A:264:GLY:HA3	2.03	0.57
1:A:343:GLU:OE2	1:A:347:ARG:NH2	2.38	0.57
1:A:87:SER:O	1:A:91:SER:HB2	2.04	0.57

Continued on next page...

Continued from previous page...

Atom-1	Atom-2	Interatomic distance (Å)	Clash overlap (Å)
1:A:307:LEU:HA	4:A:2014:HOH:O	2.04	0.57
1:A:29:LYS:HG2	1:A:29:LYS:O	2.05	0.56
1:A:363:VAL:CG1	1:A:365:ALA:O	2.53	0.56
1:A:75:GLN:OE1	1:A:75:GLN:HA	2.05	0.56
1:A:180:CYS:O	1:A:184:PHE:HB2	2.04	0.56
1:A:476:LYS:O	1:A:477:LYS:HB2	2.05	0.56
1:A:348:GLU:HA	1:A:348:GLU:OE1	2.06	0.56
1:A:158:TRP:HE3	1:A:443:TYR:HE2	1.53	0.56
1:A:184:PHE:HB3	1:A:189:ARG:HG2	1.86	0.56
1:A:379:ILE:CG2	1:A:379:ILE:O	2.54	0.56
2:A:1480:HEM:HHC	2:A:1480:HEM:CBB	2.36	0.56
1:A:281:VAL:O	1:A:285:ILE:CD1	2.47	0.56
1:A:355:PRO:HA	1:A:462:VAL:O	2.06	0.55
2:A:1480:HEM:HMA2	2:A:1480:HEM:CBA	2.37	0.55
1:A:339:MET:N	1:A:340:PRO:CD	2.70	0.55
1:A:48:PHE:CE1	1:A:52:PRO:HB3	2.42	0.55
1:A:188:LEU:HD13	1:A:243:ILE:HD13	1.90	0.54
1:A:158:TRP:O	1:A:475:ARG:NH2	2.35	0.54
1:A:249:LYS:O	1:A:249:LYS:HG3	2.07	0.54
1:A:193:ASN:HA	4:A:2011:HOH:O	2.07	0.54
1:A:366:GLU:OE2	1:A:373:VAL:HG12	2.08	0.54
2:A:1480:HEM:CMA	2:A:1480:HEM:CBA	2.85	0.54
3:A:1490:LFT:HAH	3:A:1490:LFT:OAC	2.08	0.54
1:A:75:GLN:OE1	1:A:75:GLN:CA	2.55	0.54
1:A:214:PHE:CD1	1:A:214:PHE:N	2.76	0.53
2:A:1480:HEM:HBB2	2:A:1480:HEM:CHC	2.37	0.53
1:A:31:THR:CG2	1:A:32:PRO:CD	2.85	0.53
1:A:446:GLN:O	1:A:471:VAL:HG13	2.09	0.53
1:A:223:LEU:HD23	1:A:224:PRO:N	2.24	0.52
1:A:77:VAL:HA	1:A:379:ILE:HG22	1.90	0.52
1:A:124:ARG:HH11	1:A:124:ARG:CG	2.20	0.52
1:A:205:GLU:O	1:A:208:LEU:N	2.41	0.52
1:A:339:MET:HE2	1:A:433:LYS:HB3	1.90	0.52
1:A:150:VAL:HG12	1:A:151:ARG:N	2.25	0.52
1:A:376:LYS:O	1:A:376:LYS:HG3	2.09	0.52
1:A:201:LEU:HA	1:A:204:MET:CE	2.40	0.52
1:A:339:MET:HB3	1:A:433:LYS:HE2	1.92	0.52
1:A:165:ILE:O	1:A:470:LEU:HA	2.09	0.52
1:A:109:VAL:O	1:A:233:ARG:HD2	2.09	0.51
1:A:147:GLN:NE2	1:A:151:ARG:HH21	2.09	0.51
1:A:149:GLU:HB3	1:A:178:THR:CG2	2.33	0.51

Continued on next page...

Continued from previous page...

Atom-1	Atom-2	Interatomic distance (Å)	Clash overlap (Å)
1:A:151:ARG:NH1	1:A:441:ARG:HH12	2.09	0.51
1:A:443:TYR:C	1:A:476:LYS:HG3	2.31	0.51
1:A:132:GLU:HA	1:A:135:THR:HG22	1.92	0.51
1:A:147:GLN:HG2	1:A:151:ARG:HE	1.75	0.51
1:A:465:THR:CG2	1:A:468:GLN:HG3	2.39	0.51
1:A:168:LEU:O	1:A:168:LEU:HD12	2.11	0.51
1:A:204:MET:SD	1:A:233:ARG:HG3	2.50	0.51
1:A:60:LYS:HE2	1:A:66:GLY:HA2	1.92	0.51
1:A:32:PRO:HB2	1:A:33:PRO:HD2	1.93	0.50
1:A:439:ALA:O	1:A:443:TYR:HB2	2.11	0.50
1:A:146:ILE:CG2	1:A:182:CYS:SG	3.00	0.50
1:A:146:ILE:HD11	1:A:434:THR:CB	2.39	0.50
2:A:1480:HEM:HMA2	2:A:1480:HEM:HBA1	1.93	0.50
1:A:376:LYS:CE	1:A:376:LYS:C	2.80	0.50
1:A:443:TYR:CE1	1:A:475:ARG:HG2	2.47	0.50
1:A:452:VAL:CG1	1:A:453:PRO:CD	2.89	0.50
1:A:103:TYR:N	1:A:103:TYR:CD1	2.80	0.50
1:A:209:ILE:HB	1:A:210:PRO:CD	2.42	0.49
1:A:366:GLU:CD	1:A:375:PRO:HA	2.32	0.49
1:A:193:ASN:HB2	1:A:196:HIS:CD2	2.47	0.49
1:A:134:LEU:HD23	1:A:427:PHE:HB2	1.93	0.49
1:A:357:LEU:HD22	1:A:462:VAL:HG21	1.95	0.49
1:A:32:PRO:HB3	1:A:372:TYR:HB3	1.94	0.48
1:A:63:LEU:O	1:A:63:LEU:HD23	2.12	0.48
1:A:359:VAL:HG22	1:A:382:CYS:O	2.13	0.48
1:A:141:ASN:O	1:A:145:ALA:HB2	2.13	0.48
1:A:442:GLU:CD	1:A:443:TYR:CD1	2.87	0.48
1:A:127:LEU:CD1	3:A:1490:LFT:HAA	2.44	0.48
1:A:196:HIS:O	1:A:200:LEU:HD12	2.14	0.48
1:A:439:ALA:C	1:A:441:ARG:H	2.15	0.48
1:A:31:THR:HG22	1:A:32:PRO:N	2.29	0.48
1:A:465:THR:HG22	1:A:467:ASN:OD1	2.13	0.48
1:A:284:MET:HG2	3:A:1490:LFT:CAB	2.41	0.48
1:A:102:VAL:HG13	1:A:213:VAL:HG13	1.96	0.48
1:A:209:ILE:C	1:A:209:ILE:HD12	2.34	0.48
1:A:96:ILE:HD12	1:A:96:ILE:N	2.28	0.48
1:A:89:PHE:HE1	1:A:380:ILE:HG23	1.79	0.47
1:A:213:VAL:O	1:A:213:VAL:HG12	2.12	0.47
1:A:452:VAL:HG13	1:A:453:PRO:CD	2.42	0.47
1:A:237:GLN:HG2	1:A:278:LEU:HD22	1.95	0.47
1:A:237:GLN:O	1:A:240:LEU:HB2	2.14	0.47

Continued on next page...

Continued from previous page...

Atom-1	Atom-2	Interatomic distance (Å)	Clash overlap (Å)
1:A:211:ALA:O	1:A:215:MET:CG	2.60	0.47
1:A:442:GLU:HG2	1:A:442:GLU:O	2.14	0.47
1:A:348:GLU:OE2	1:A:404:ARG:HD3	2.14	0.47
1:A:146:ILE:HD11	1:A:434:THR:CG2	2.44	0.47
1:A:203:LYS:NZ	1:A:228:ARG:HE	2.12	0.47
1:A:394:PHE:CE2	1:A:411:ALA:HB1	2.50	0.47
1:A:443:TYR:H	1:A:476:LYS:HZ2	1.63	0.46
1:A:476:LYS:O	1:A:477:LYS:HG3	2.15	0.46
1:A:235:GLU:HG2	1:A:239:ILE:HD11	1.96	0.46
1:A:282:CYS:O	1:A:286:VAL:HG23	2.15	0.46
1:A:309:HIS:O	1:A:313:LYS:HG3	2.15	0.46
1:A:465:THR:HB	1:A:468:GLN:HB2	1.98	0.46
2:A:1480:HEM:CBC	2:A:1480:HEM:HMC2	2.45	0.46
1:A:128:ASN:HA	1:A:131:ALA:HB3	1.98	0.46
1:A:205:GLU:HG3	1:A:206:SER:N	2.29	0.46
1:A:103:TYR:N	1:A:103:TYR:HD1	2.14	0.46
1:A:55:PHE:HA	1:A:58:ARG:NH1	2.31	0.46
1:A:228:ARG:NH1	4:A:2012:HOH:O	2.48	0.46
1:A:465:THR:HG21	1:A:467:ASN:OD1	2.15	0.46
1:A:127:LEU:HD12	3:A:1490:LFT:HAA	1.98	0.45
1:A:442:GLU:OE2	1:A:443:TYR:CD2	2.70	0.45
1:A:61:ARG:HB3	1:A:61:ARG:NH1	2.31	0.45
1:A:63:LEU:CD2	1:A:65:SER:HB3	2.44	0.45
1:A:443:TYR:N	1:A:476:LYS:HZ2	2.14	0.45
1:A:376:LYS:HE3	1:A:377:GLY:N	2.31	0.45
1:A:225:GLN:O	1:A:229:CYS:N	2.49	0.45
1:A:307:LEU:HD23	4:A:2014:HOH:O	2.17	0.45
1:A:203:LYS:HD3	1:A:203:LYS:HA	1.76	0.45
1:A:442:GLU:OE1	1:A:442:GLU:CA	2.64	0.45
1:A:442:GLU:OE2	1:A:443:TYR:CG	2.70	0.45
1:A:100:ARG:NH2	1:A:119:PRO:HA	2.25	0.45
1:A:150:VAL:CG1	1:A:438:THR:CG2	2.71	0.45
1:A:209:ILE:C	1:A:209:ILE:CD1	2.85	0.45
1:A:316:LEU:O	1:A:319:LEU:HB3	2.17	0.45
1:A:123:MET:HG2	1:A:127:LEU:HD13	1.99	0.45
1:A:133:GLU:N	1:A:135:THR:HG22	2.30	0.44
1:A:261:LEU:O	1:A:265:LEU:HG	2.18	0.44
1:A:146:ILE:HG22	1:A:182:CYS:SG	2.58	0.44
1:A:442:GLU:CD	1:A:443:TYR:CG	2.91	0.44
1:A:465:THR:O	1:A:469:CYS:SG	2.72	0.44
1:A:423:ILE:CD1	2:A:1480:HEM:HMD3	2.46	0.44

Continued on next page...

Continued from previous page...

Atom-1	Atom-2	Interatomic distance (Å)	Clash overlap (Å)
1:A:114:VAL:O	1:A:115:ALA:C	2.55	0.44
1:A:442:GLU:O	1:A:443:TYR:HD1	2.01	0.44
1:A:107:THR:OG1	1:A:108:PRO:CD	2.59	0.44
1:A:120:TYR:N	1:A:121:PRO:CD	2.81	0.44
1:A:348:GLU:OE2	1:A:404:ARG:CD	2.65	0.44
1:A:442:GLU:OE2	1:A:443:TYR:CD1	2.71	0.44
1:A:449:ARG:NH1	1:A:468:GLN:CD	2.71	0.44
1:A:476:LYS:O	1:A:477:LYS:CG	2.65	0.44
1:A:203:LYS:HD3	1:A:203:LYS:O	2.18	0.43
1:A:163:GLY:HA3	1:A:473:TYR:CG	2.52	0.43
1:A:30:LYS:HA	1:A:30:LYS:HD2	1.75	0.43
1:A:305:LEU:O	1:A:308:MET:HG2	2.18	0.43
1:A:333:ASP:O	1:A:337:ASP:HB2	2.19	0.43
1:A:150:VAL:CG1	1:A:151:ARG:N	2.80	0.43
1:A:418:GLY:O	1:A:421:LYS:HG3	2.19	0.43
1:A:442:GLU:CA	1:A:476:LYS:HZ3	2.32	0.43
1:A:61:ARG:HB3	1:A:61:ARG:CZ	2.48	0.43
1:A:331:ASN:O	1:A:334:ASN:HB2	2.19	0.43
1:A:438:THR:O	1:A:441:ARG:CB	2.59	0.43
1:A:443:TYR:HE1	1:A:475:ARG:HG2	1.82	0.43
1:A:161:ASP:OD1	1:A:161:ASP:N	2.50	0.43
1:A:146:ILE:HB	1:A:178:THR:HB	2.01	0.43
1:A:213:VAL:CG1	1:A:213:VAL:O	2.67	0.43
1:A:175:ILE:HD13	1:A:175:ILE:HA	1.86	0.43
1:A:364:LYS:O	1:A:376:LYS:HB2	2.19	0.43
1:A:91:SER:N	1:A:92:PRO:HD2	2.34	0.43
1:A:292:GLY:O	1:A:296:SER:HB2	2.19	0.43
1:A:443:TYR:N	1:A:476:LYS:HB2	2.34	0.43
1:A:316:LEU:HB2	4:A:2014:HOH:O	2.18	0.42
1:A:375:PRO:HG2	1:A:378:ASP:HB2	2.01	0.42
1:A:106:MET:HB3	1:A:106:MET:HE3	1.90	0.42
1:A:188:LEU:HD12	1:A:188:LEU:O	2.18	0.42
1:A:45:ILE:HA	1:A:45:ILE:HD13	1.87	0.42
1:A:100:ARG:HE	1:A:100:ARG:HB2	1.63	0.42
3:A:1490:LFT:CAH	3:A:1490:LFT:OAC	2.66	0.42
1:A:214:PHE:C	1:A:215:MET:SD	2.98	0.42
1:A:375:PRO:O	1:A:378:ASP:HB2	2.20	0.42
1:A:134:LEU:HD23	1:A:427:PHE:CB	2.50	0.42
1:A:101:GLU:HA	1:A:104:THR:HG23	2.00	0.42
1:A:454:ASP:HA	1:A:455:PRO:HD2	1.88	0.42
1:A:89:PHE:CE1	1:A:380:ILE:HG23	2.55	0.42

Continued on next page...

Continued from previous page...

Atom-1	Atom-2	Interatomic distance (Å)	Clash overlap (Å)
1:A:149:GLU:OE1	1:A:149:GLU:HA	2.19	0.42
1:A:339:MET:HE3	1:A:437:ALA:HB2	2.01	0.42
1:A:143:VAL:N	1:A:144:PRO:HD2	2.35	0.42
1:A:146:ILE:HG13	1:A:147:GLN:N	2.34	0.42
1:A:69:THR:OG1	1:A:78:THR:HB	2.19	0.42
1:A:103:TYR:C	1:A:105:ILE:N	2.73	0.42
1:A:135:THR:C	1:A:137:ALA:H	2.21	0.42
1:A:442:GLU:O	1:A:442:GLU:CG	2.67	0.42
1:A:196:HIS:HA	1:A:199:GLN:HG3	2.01	0.42
1:A:276:MET:HB2	1:A:281:VAL:CG2	2.50	0.42
1:A:66:GLY:HA3	1:A:82:ASP:HB2	2.01	0.42
1:A:296:SER:O	1:A:300:THR:OG1	2.24	0.41
1:A:452:VAL:HG12	1:A:453:PRO:N	2.36	0.41
1:A:332:TYR:CE2	1:A:336:MET:HG3	2.55	0.41
1:A:439:ALA:C	1:A:441:ARG:N	2.74	0.41
1:A:156:GLU:O	1:A:159:LYS:HE2	2.21	0.41
1:A:209:ILE:HD13	1:A:210:PRO:O	2.21	0.41
1:A:302:TRP:HA	1:A:302:TRP:CE3	2.56	0.41
1:A:309:HIS:HD2	1:A:311:LYS:CB	2.33	0.41
1:A:380:ILE:O	1:A:380:ILE:HG23	2.20	0.41
1:A:203:LYS:CD	1:A:203:LYS:O	2.69	0.41
1:A:163:GLY:HA3	1:A:473:TYR:CD2	2.56	0.41
1:A:346:VAL:O	1:A:350:ILE:HG13	2.21	0.41
1:A:91:SER:N	1:A:92:PRO:CD	2.83	0.41
1:A:309:HIS:HD2	1:A:311:LYS:N	2.13	0.41
1:A:64:LYS:HB3	1:A:64:LYS:HE2	1.91	0.41
1:A:196:HIS:O	1:A:199:GLN:HB2	2.21	0.40
1:A:201:LEU:HD23	1:A:204:MET:CE	2.51	0.40
1:A:201:LEU:HA	1:A:204:MET:HE3	2.02	0.40
1:A:150:VAL:HG11	1:A:438:THR:CB	2.50	0.40
1:A:223:LEU:CD2	1:A:224:PRO:N	2.85	0.40
1:A:229:CYS:SG	1:A:230:ARG:N	2.94	0.40
1:A:281:VAL:HG12	1:A:285:ILE:CD1	2.50	0.40
1:A:139:PHE:HA	1:A:142:PHE:CD2	2.56	0.40
1:A:175:ILE:HG13	1:A:297:THR:HA	2.04	0.40
1:A:316:LEU:HD23	1:A:316:LEU:C	2.41	0.40
1:A:33:PRO:HG2	1:A:63:LEU:CD2	2.16	0.40
1:A:167:LEU:HA	1:A:167:LEU:HD12	1.89	0.40

There are no symmetry-related clashes.

5.3 Torsion angles [i](#)

5.3.1 Protein backbone [i](#)

In the following table, the Percentiles column shows the percent Ramachandran outliers of the chain as a percentile score with respect to all X-ray entries followed by that with respect to entries of similar resolution.

The Analysed column shows the number of residues for which the backbone conformation was analysed, and the total number of residues.

Mol	Chain	Analysed	Favoured	Allowed	Outliers	Percentiles	
1	A	428/460 (93%)	396 (92%)	32 (8%)	0	100	100

There are no Ramachandran outliers to report.

5.3.2 Protein sidechains [i](#)

In the following table, the Percentiles column shows the percent sidechain outliers of the chain as a percentile score with respect to all X-ray entries followed by that with respect to entries of similar resolution.

The Analysed column shows the number of residues for which the sidechain conformation was analysed, and the total number of residues.

Mol	Chain	Analysed	Rotameric	Outliers	Percentiles	
1	A	378/402 (94%)	339 (90%)	39 (10%)	7	13

All (39) residues with a non-rotameric sidechain are listed below:

Mol	Chain	Res	Type
1	A	41	PHE
1	A	42	LEU
1	A	45	ILE
1	A	75	GLN
1	A	76	ARG
1	A	87	SER
1	A	103	TYR
1	A	122	ARG
1	A	124	ARG
1	A	135	THR
1	A	136	ILE
1	A	150	VAL
1	A	161	ASP

Continued on next page...

Continued from previous page...

Mol	Chain	Res	Type
1	A	188	LEU
1	A	204	MET
1	A	214	PHE
1	A	223	LEU
1	A	229	CYS
1	A	269	VAL
1	A	278	LEU
1	A	279	HIS
1	A	289	MET
1	A	302	TRP
1	A	330	LEU
1	A	332	TYR
1	A	339	MET
1	A	376	LYS
1	A	419	VAL
1	A	430	LEU
1	A	442	GLU
1	A	443	TYR
1	A	449	ARG
1	A	451	GLU
1	A	459	THR
1	A	460	MET
1	A	466	LEU
1	A	474	THR
1	A	476	LYS
1	A	477	LYS

Some sidechains can be flipped to improve hydrogen bonding and reduce clashes. All (3) such sidechains are listed below:

Mol	Chain	Res	Type
1	A	128	ASN
1	A	309	HIS
1	A	329	GLN

5.3.3 RNA ⓘ

There are no RNA molecules in this entry.

5.4 Non-standard residues in protein, DNA, RNA chains [i](#)

There are no non-standard protein/DNA/RNA residues in this entry.

5.5 Carbohydrates [i](#)

There are no carbohydrates in this entry.

5.6 Ligand geometry [i](#)

2 ligands are modelled in this entry.

In the following table, the Counts columns list the number of bonds (or angles) for which Mogul statistics could be retrieved, the number of bonds (or angles) that are observed in the model and the number of bonds (or angles) that are defined in the Chemical Component Dictionary. The Link column lists molecule types, if any, to which the group is linked. The Z score for a bond length (or angle) is the number of standard deviations the observed value is removed from the expected value. A bond length (or angle) with $|Z| > 2$ is considered an outlier worth inspection. RMSZ is the root-mean-square of all Z scores of the bond lengths (or angles).

Mol	Type	Chain	Res	Link	Bond lengths			Bond angles		
					Counts	RMSZ	# Z > 2	Counts	RMSZ	# Z > 2
3	LFT	A	1490	2	27,29,29	2.01	5 (18%)	35,39,39	1.57	5 (14%)
2	HEM	A	1480	1,3	27,50,50	1.82	6 (22%)	17,82,82	1.41	2 (11%)

In the following table, the Chirals column lists the number of chiral outliers, the number of chiral centers analysed, the number of these observed in the model and the number defined in the Chemical Component Dictionary. Similar counts are reported in the Torsion and Rings columns. '-' means no outliers of that kind were identified.

Mol	Type	Chain	Res	Link	Chirals	Torsions	Rings
3	LFT	A	1490	2	-	5/20/20/20	0/3/3/3
2	HEM	A	1480	1,3	-	5/6/54/54	-

All (11) bond length outliers are listed below:

Mol	Chain	Res	Type	Atoms	Z	Observed(Å)	Ideal(Å)
3	A	1490	LFT	CAX-CAZ	-6.79	1.39	1.51
3	A	1490	LFT	CAW-CAY	-5.48	1.39	1.53
2	A	1480	HEM	C3B-C2B	-5.22	1.33	1.40
3	A	1490	LFT	CAV-NAR	-4.00	1.33	1.41
2	A	1480	HEM	C3C-C2C	-2.77	1.36	1.40
2	A	1480	HEM	C3D-C2D	-2.76	1.29	1.37

Continued on next page...

Continued from previous page...

Mol	Chain	Res	Type	Atoms	Z	Observed(Å)	Ideal(Å)
2	A	1480	HEM	CAA-C2A	-2.41	1.48	1.52
2	A	1480	HEM	CAD-C3D	-2.28	1.48	1.52
3	A	1490	LFT	CAN-NBA	-2.28	1.33	1.37
3	A	1490	LFT	OAS-CAZ	-2.26	1.43	1.46
2	A	1480	HEM	C1A-CHA	-2.26	1.34	1.41

All (7) bond angle outliers are listed below:

Mol	Chain	Res	Type	Atoms	Z	Observed(°)	Ideal(°)
3	A	1490	LFT	OAS-CAT-NAR	5.42	115.94	109.07
2	A	1480	HEM	CAD-CBD-CGD	-3.48	106.83	112.67
3	A	1490	LFT	CAP-CAZ-CAX	-2.63	107.17	111.46
3	A	1490	LFT	CAP-NBA-CAO	2.48	130.64	125.76
3	A	1490	LFT	CAP-NBA-CAN	-2.20	121.38	125.92
2	A	1480	HEM	CBD-CAD-C3D	-2.10	108.61	112.48
3	A	1490	LFT	CAV-NAR-CAT	-2.07	122.95	126.36

There are no chirality outliers.

All (10) torsion outliers are listed below:

Mol	Chain	Res	Type	Atoms
2	A	1480	HEM	C1A-C2A-CAA-CBA
2	A	1480	HEM	C3A-C2A-CAA-CBA
2	A	1480	HEM	C2A-CAA-CBA-CGA
2	A	1480	HEM	C2D-C3D-CAD-CBD
2	A	1480	HEM	C4D-C3D-CAD-CBD
3	A	1490	LFT	OAC-CAT-OAS-CAZ
3	A	1490	LFT	NAR-CAT-OAS-CAZ
3	A	1490	LFT	CAP-CAZ-OAS-CAT
3	A	1490	LFT	CAK-CAX-CAZ-OAS
3	A	1490	LFT	CAJ-CAX-CAZ-OAS

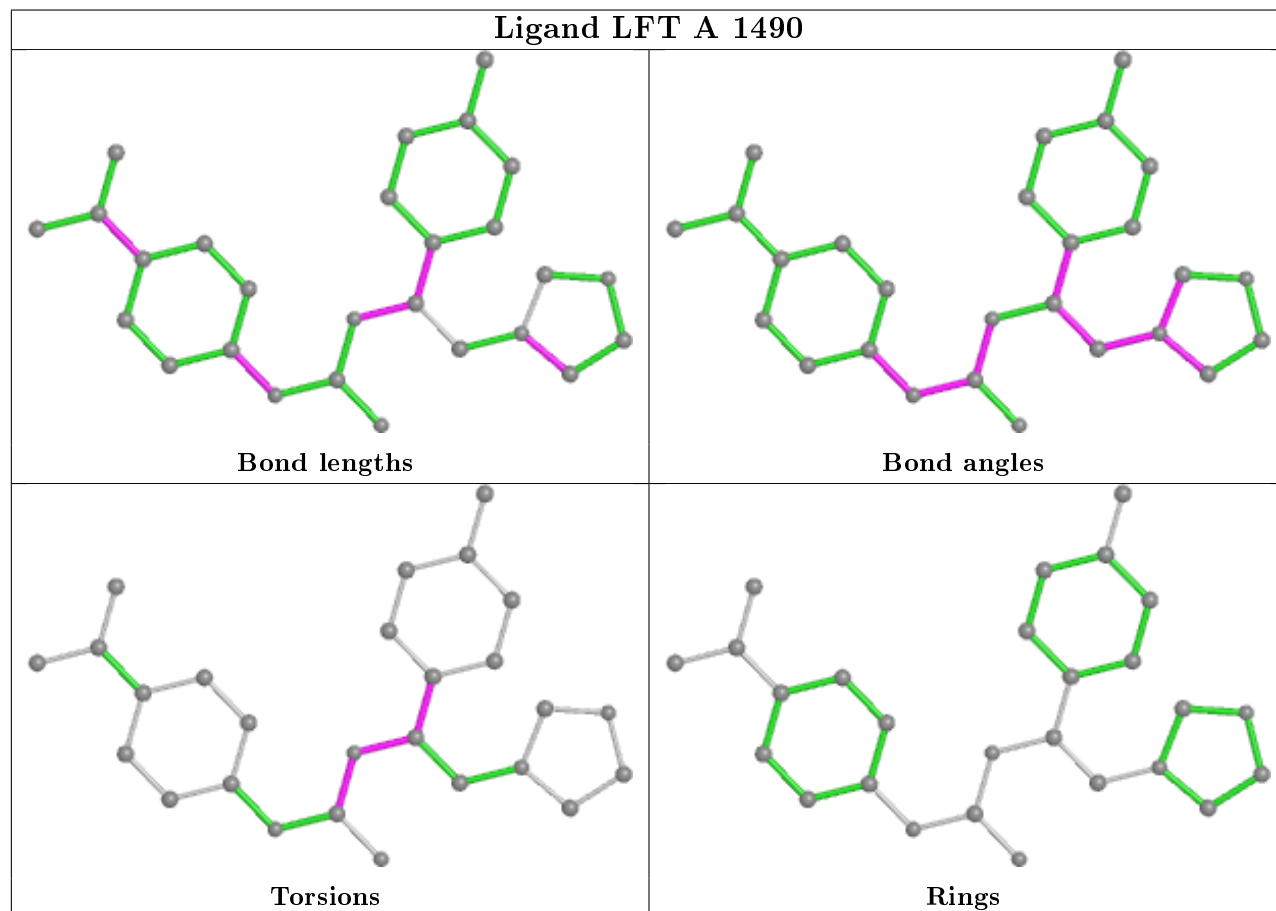
There are no ring outliers.

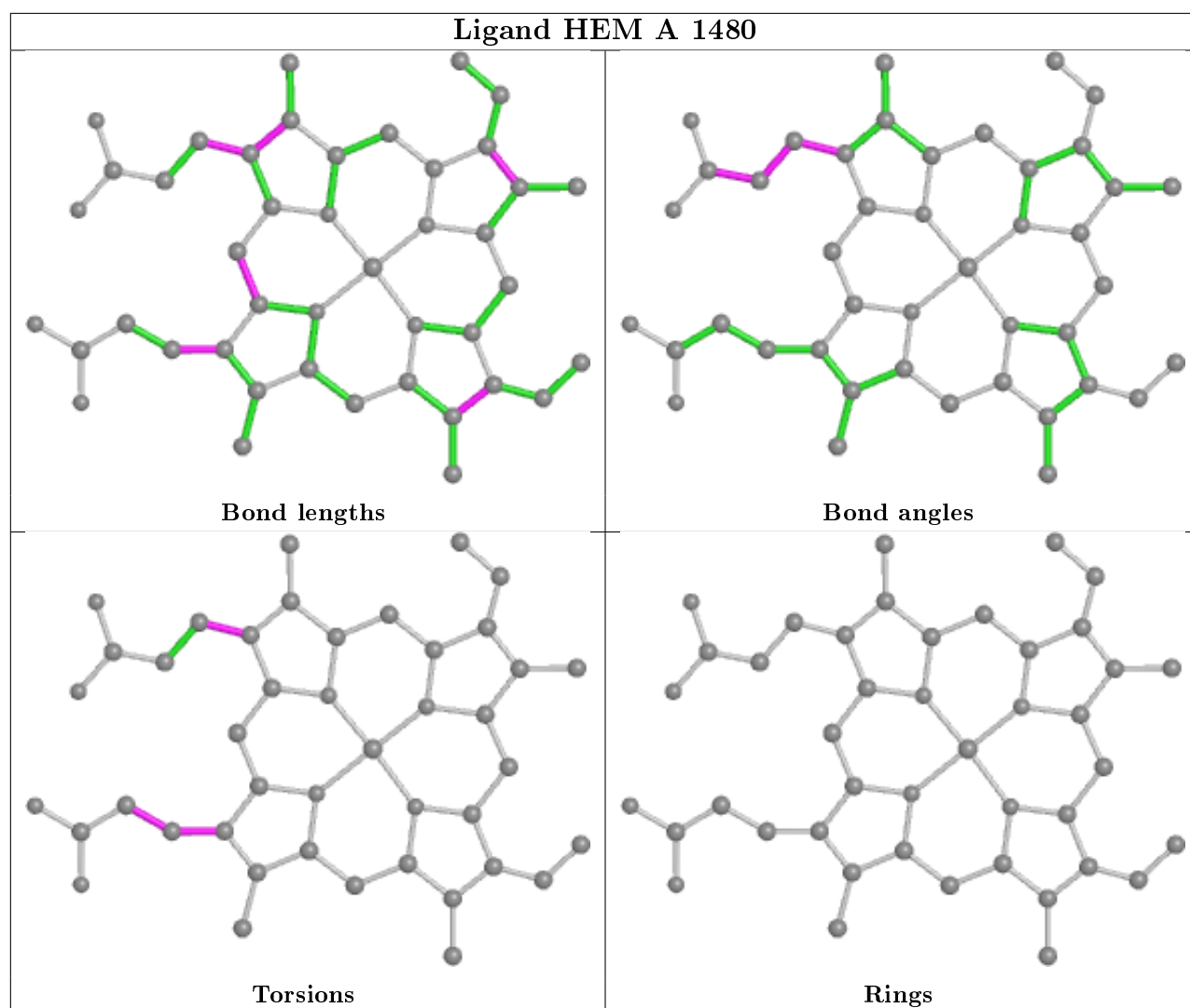
2 monomers are involved in 29 short contacts:

Mol	Chain	Res	Type	Clashes	Symm-Clashes
3	A	1490	LFT	11	0
2	A	1480	HEM	18	0

The following is a two-dimensional graphical depiction of Mogul quality analysis of bond lengths, bond angles, torsion angles, and ring geometry for all instances of the Ligand of Interest. In

addition, ligands with molecular weight > 250 and outliers as shown on the validation Tables will also be included. For torsion angles, if less than 5% of the Mogul distribution of torsion angles is within 10 degrees of the torsion angle in question, then that torsion angle is considered an outlier. Any bond that is central to one or more torsion angles identified as an outlier by Mogul will be highlighted in the graph. For rings, the root-mean-square deviation (RMSD) between the ring in question and similar rings identified by Mogul is calculated over all ring torsion angles. If the average RMSD is greater than 60 degrees and the minimal RMSD between the ring in question and any Mogul-identified rings is also greater than 60 degrees, then that ring is considered an outlier. The outliers are highlighted in purple. The color gray indicates Mogul did not find sufficient equivalents in the CSD to analyse the geometry.





5.7 Other polymers [i](#)

There are no such residues in this entry.

5.8 Polymer linkage issues [i](#)

There are no chain breaks in this entry.

6 Fit of model and data ⓘ

6.1 Protein, DNA and RNA chains ⓘ

In the following table, the column labelled ‘#RSRZ> 2’ contains the number (and percentage) of RSRZ outliers, followed by percent RSRZ outliers for the chain as percentile scores relative to all X-ray entries and entries of similar resolution. The OWAB column contains the minimum, median, 95th percentile and maximum values of the occupancy-weighted average B-factor per residue. The column labelled ‘Q< 0.9’ lists the number of (and percentage) of residues with an average occupancy less than 0.9.

Mol	Chain	Analysed	<RSRZ>	#RSRZ>2	OWAB(Å ²)	Q<0.9
1	A	434/460 (94%)	0.47	40 (9%) 9 9	41, 89, 136, 197	0

All (40) RSRZ outliers are listed below:

Mol	Chain	Res	Type	RSRZ
1	A	211	ALA	8.4
1	A	223	LEU	7.0
1	A	41	PHE	6.1
1	A	214	PHE	5.1
1	A	224	PRO	5.1
1	A	234	ALA	4.9
1	A	210	PRO	4.3
1	A	450	ASP	4.3
1	A	46	VAL	4.2
1	A	159	LYS	4.1
1	A	271	ARG	4.0
1	A	160	GLU	3.9
1	A	230	ARG	3.9
1	A	472	LYS	3.7
1	A	207	SER	3.6
1	A	39	VAL	3.4
1	A	209	ILE	3.4
1	A	225	GLN	3.4
1	A	292	GLY	3.2
1	A	291	ALA	3.2
1	A	38	THR	3.1
1	A	445	PHE	2.9
1	A	112	GLU	2.7
1	A	250	GLU	2.7
1	A	120	TYR	2.6
1	A	358	MET	2.6
1	A	45	ILE	2.5

Continued on next page...

Continued from previous page...

Mol	Chain	Res	Type	RSRZ
1	A	336	MET	2.4
1	A	270	TYR	2.4
1	A	304	MET	2.4
1	A	296	SER	2.2
1	A	362	MET	2.2
1	A	272	ASP	2.2
1	A	42	LEU	2.2
1	A	156	GLU	2.1
1	A	293	GLN	2.1
1	A	175	ILE	2.1
1	A	475	ARG	2.1
1	A	300	THR	2.0
1	A	359	VAL	2.0

6.2 Non-standard residues in protein, DNA, RNA chains [i](#)

There are no non-standard protein/DNA/RNA residues in this entry.

6.3 Carbohydrates [i](#)

There are no carbohydrates in this entry.

6.4 Ligands [i](#)

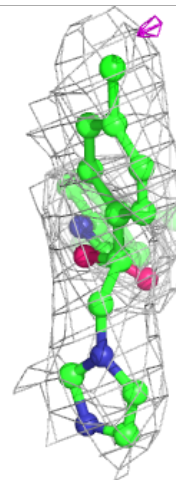
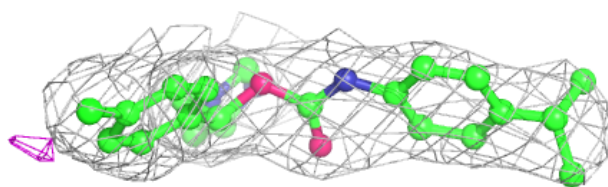
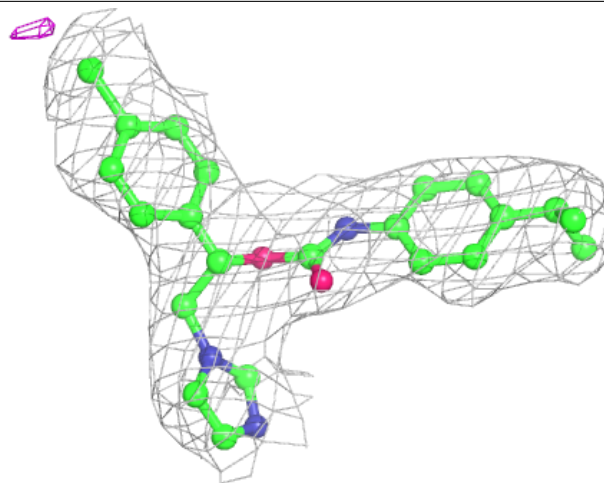
In the following table, the Atoms column lists the number of modelled atoms in the group and the number defined in the chemical component dictionary. The B-factors column lists the minimum, median, 95th percentile and maximum values of B factors of atoms in the group. The column labelled 'Q< 0.9' lists the number of atoms with occupancy less than 0.9.

Mol	Type	Chain	Res	Atoms	RSCC	RSR	B-factors(\AA^2)	Q<0.9
3	LFT	A	1490	27/27	0.95	0.16	51,57,75,81	0
2	HEM	A	1480	43/43	0.97	0.18	50,59,80,88	0

The following is a graphical depiction of the model fit to experimental electron density of all instances of the Ligand of Interest. In addition, ligands with molecular weight > 250 and outliers as shown on the geometry validation Tables will also be included. Each fit is shown from different orientation to approximate a three-dimensional view.

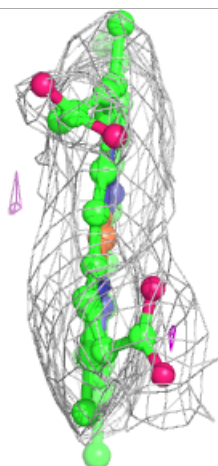
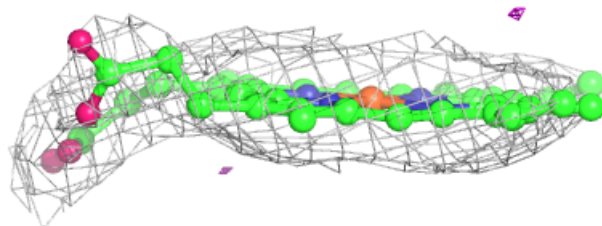
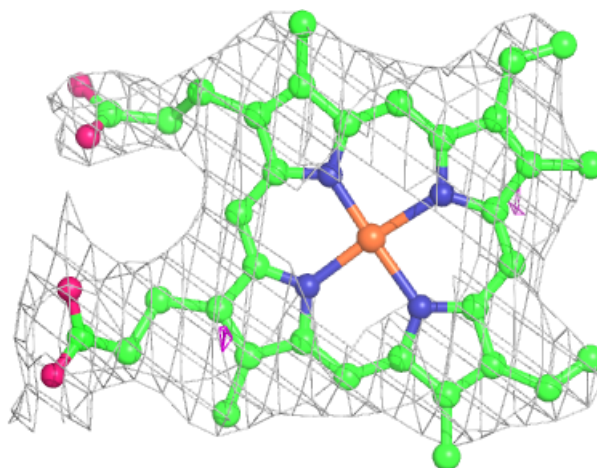
Electron density around LFT A 1490:

$2mF_o-DF_c$ (at 0.7 rmsd) in gray
 mF_o-DF_c (at 3 rmsd) in purple (negative)
and green (positive)



Electron density around HEM A 1480:

$2mF_o-DF_c$ (at 0.7 rmsd) in gray
 mF_o-DF_c (at 3 rmsd) in purple (negative)
and green (positive)



6.5 Other polymers [i](#)

There are no such residues in this entry.