



# Full wwPDB X-ray Structure Validation Report ⓘ

May 15, 2020 – 11:26 am BST

PDB ID : 2CLC  
Title : CRYSTAL STRUCTURE ANALYSIS OF A FLUORESCENT FORM OF H-RAS P21 IN COMPLEX WITH GTP (2)  
Authors : Klink, B.U.; Goody, R.S.; Scheidig, A.J.  
Deposited on : 2006-04-27  
Resolution : 1.30 Å(reported)

This is a Full wwPDB X-ray Structure Validation Report for a publicly released PDB entry.

We welcome your comments at [validation@mail.wwpdb.org](mailto:validation@mail.wwpdb.org)

A user guide is available at

<https://www.wwpdb.org/validation/2017/XrayValidationReportHelp>

with specific help available everywhere you see the ⓘ symbol.

---

The following versions of software and data (see [references ⓘ](#)) were used in the production of this report:

MolProbity : 4.02b-467  
Mogul : 1.8.5 (274361), CSD as541be (2020)  
Xtriage (Phenix) : 1.13  
EDS : 2.11  
buster-report : 1.1.7 (2018)  
Percentile statistics : 20191225.v01 (using entries in the PDB archive December 25th 2019)  
Refmac : 5.8.0158  
CCP4 : 7.0.044 (Gargrove)  
Ideal geometry (proteins) : Engh & Huber (2001)  
Ideal geometry (DNA, RNA) : Parkinson et al. (1996)  
Validation Pipeline (wwPDB-VP) : 2.11

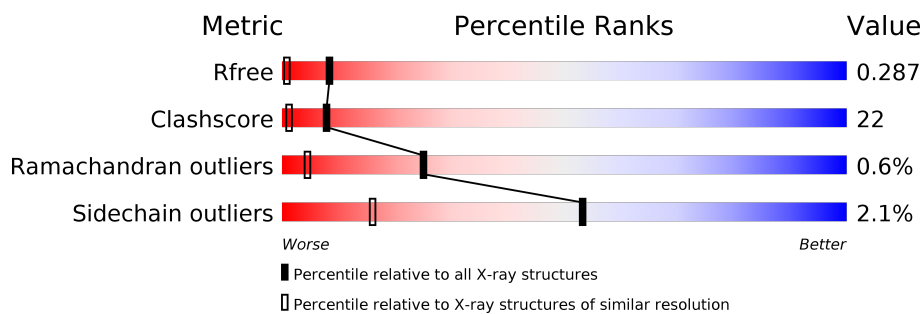
# 1 Overall quality at a glance

The following experimental techniques were used to determine the structure:

*X-RAY DIFFRACTION*



The reported resolution of this entry is 1.30 Å.

Percentile scores (ranging between 0-100) for global validation metrics of the entry are shown in the following graphic. The table shows the number of entries on which the scores are based.



Metric	Whole archive (#Entries)	Similar resolution (#Entries, resolution range(Å))
$R_{free}$	130704	1058 (1.30-1.30)
Clashscore	141614	1101 (1.30-1.30)
Ramachandran outliers	138981	1058 (1.30-1.30)
Sidechain outliers	138945	1058 (1.30-1.30)

The table below summarises the geometric issues observed across the polymeric chains and their fit to the electron density. The red, orange, yellow and green segments on the lower bar indicate the fraction of residues that contain outliers for  $\geq 3$ , 2, 1 and 0 types of geometric quality criteria respectively. A grey segment represents the fraction of residues that are not modelled. The numeric value for each fraction is indicated below the corresponding segment, with a dot representing fractions  $\leq 5\%$ .

Mol	Chain	Length	Quality of chain
1	1-X	166	
1	2-X	166	

## 2 Entry composition

There are 5 unique types of molecules in this entry. The entry contains 3142 atoms, of which 0 are hydrogens and 0 are deuteriums.

In the tables below, the ZeroOcc column contains the number of atoms modelled with zero occupancy, the AltConf column contains the number of residues with at least one atom in alternate conformation and the Trace column contains the number of residues modelled with at most 2 atoms.

- Molecule 1 is a protein called GTPASE HRAS.

Mol	Chain	Residues	Atoms					ZeroOcc	AltConf	Trace
1	1-X	166	Total	C	N	O	S	0	166	0
			1317	818	228	264	7			
1	2-X	166	Total	C	N	O	S	0	166	0
			1317	818	228	264	7			

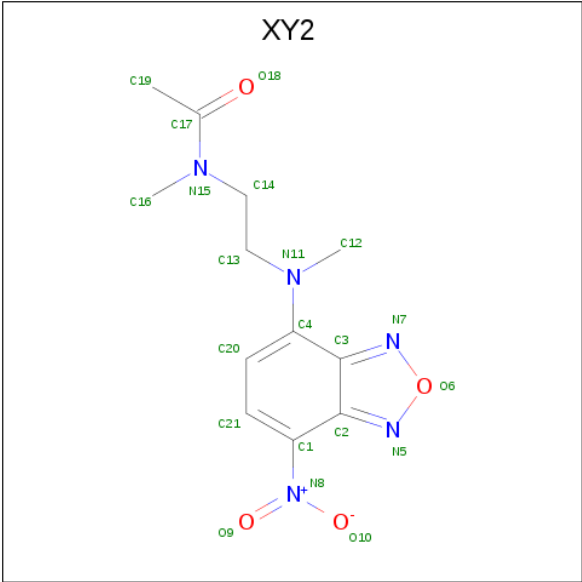
There are 2 discrepancies between the modelled and reference sequences:

Chain	Residue	Modelled	Actual	Comment	Reference
X	32	CYS	TYR	engineered mutation	UNP P01112
X	118	SER	CYS	engineered mutation	UNP P01112

- Molecule 2 is MAGNESIUM ION (three-letter code: MG) (formula: Mg).

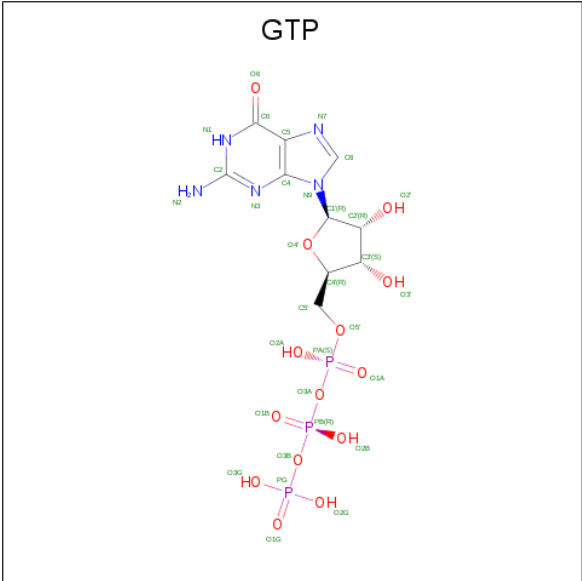
Mol	Chain	Residues	Atoms		ZeroOcc	AltConf
2	1-X	2	Total	Mg	0	2
			2	2		
2	2-X	2	Total	Mg	0	2
			2	2		

- Molecule 3 is N,N'-DIMETHYL-N-(ACETYL)-N'-(7-NITROBENZ-2-OXA-1,3-DIAZOL-4-YL)ETHYLENEDIAMINE (three-letter code: XY2) (formula: C<sub>12</sub>H<sub>15</sub>N<sub>5</sub>O<sub>4</sub>).



Mol	Chain	Residues	Atoms				ZeroOcc	AltConf
3	1-X	1	Total	C	N	O	0	1
			21	12	5	4		
3	2-X	1	Total	C	N	O	0	1
			21	12	5	4		

- Molecule 4 is GUANOSINE-5'-TRIPHOSPHATE (three-letter code: GTP) (formula:  $C_{10}H_{16}N_5O_{14}P_3$ ).



Mol	Chain	Residues	Atoms					ZeroOcc	AltConf
4	1-X	1	Total	C	N	O	P	0	1
			32	10	5	14	3		

Continued on next page...

*Continued from previous page...*

Mol	Chain	Residues	Atoms					ZeroOcc	AltConf
4	2-X	1	Total	C	N	O	P	0	1
			32	10	5	14	3		


- Molecule 5 is water.

Mol	Chain	Residues	Atoms		ZeroOcc	AltConf
5	1-X	199	Total	O	0	199
			199	199		
5	2-X	199	Total	O	0	199
			199	199		

### 3 Residue-property plots [i](#)

These plots are drawn for all protein, RNA and DNA chains in the entry. The first graphic for a chain summarises the proportions of the various outlier classes displayed in the second graphic. The second graphic shows the sequence view annotated by issues in geometry. Residues are color-coded according to the number of geometric quality criteria for which they contain at least one outlier: green = 0, yellow = 1, orange = 2 and red = 3 or more. Stretches of 2 or more consecutive residues without any outlier are shown as a green connector. Residues present in the sample, but not in the model, are shown in grey.

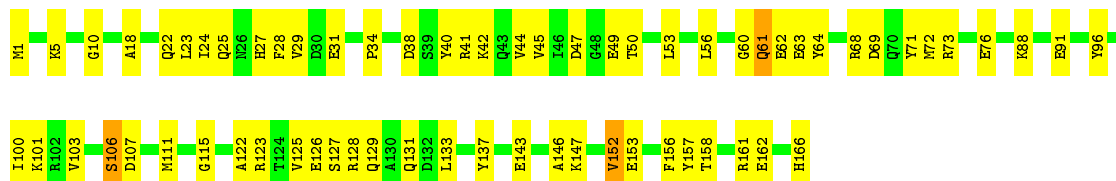
#### • Molecule 1: GTPASE HRAS

Chain 1-X:  81% 17% .



#### • Molecule 1: GTPASE HRAS

Chain 2-X:  60% 38% .



## 4 Data and refinement statistics

Property	Value	Source
Space group	P 41	Depositor
Cell constants a, b, c, $\alpha$ , $\beta$ , $\gamma$	69.32Å 69.32Å 35.01Å 90.00° 90.00° 90.00°	Depositor
Resolution (Å)	69.34 – 1.30 19.29 – 1.30	Depositor EDS
% Data completeness (in resolution range)	100.0 (69.34-1.30) 100.0 (19.29-1.30)	Depositor EDS
$R_{merge}$	0.06	Depositor
$R_{sym}$	(Not available)	Depositor
$\langle I/\sigma(I) \rangle$ <sup>1</sup>	2.59 (at 1.30Å)	Xtriage
Refinement program	REFMAC 5.2.0005	Depositor
R, $R_{free}$	0.149 , 0.180 0.250 , 0.287	Depositor DCC
$R_{free}$ test set	2055 reflections (4.99%)	wwPDB-VP
Wilson B-factor (Å <sup>2</sup> )	15.9	Xtriage
Anisotropy	0.271	Xtriage
Bulk solvent $k_{sol}$ (e/Å <sup>3</sup> ), $B_{sol}$ (Å <sup>2</sup> )	0.35 , 37.8	EDS
L-test for twinning <sup>2</sup>	$\langle  L  \rangle = 0.49$ , $\langle L^2 \rangle = 0.33$	Xtriage
Estimated twinning fraction	0.033 for h,-k,-l	Xtriage
$F_o, F_c$ correlation	0.95	EDS
Total number of atoms	3142	wwPDB-VP
Average B, all atoms (Å <sup>2</sup> )	16.0	wwPDB-VP

Xtriage's analysis on translational NCS is as follows: *The largest off-origin peak in the Patterson function is 8.31% of the height of the origin peak. No significant pseudotranslation is detected.*

<sup>1</sup>Intensities estimated from amplitudes.

<sup>2</sup>Theoretical values of  $\langle |L| \rangle$ ,  $\langle L^2 \rangle$  for acentric reflections are 0.5, 0.333 respectively for untwinned datasets, and 0.375, 0.2 for perfectly twinned datasets.

## 5 Model quality

### 5.1 Standard geometry

Bond lengths and bond angles in the following residue types are not validated in this section: GTP, XY2, MG

The Z score for a bond length (or angle) is the number of standard deviations the observed value is removed from the expected value. A bond length (or angle) with  $|Z| > 5$  is considered an outlier worth inspection. RMSZ is the root-mean-square of all Z scores of the bond lengths (or angles).

Mol	Chain	Bond lengths		Bond angles	
		RMSZ	$\# Z  > 5$	RMSZ	$\# Z  > 5$
1	1-X	0.82	3/1335 (0.2%)	0.86	3/1800 (0.2%)

Chiral center outliers are detected by calculating the chiral volume of a chiral center and verifying if the center is modelled as a planar moiety or with the opposite hand. A planarity outlier is detected by checking planarity of atoms in a peptide group, atoms in a mainchain group or atoms of a sidechain that are expected to be planar.

Mol	Chain	#Chirality outliers	#Planarity outliers
1	2-X	0	1

All (3) bond length outliers are listed below:

Mol	Chain	Res	Type	Atoms	Z	Observed(Å)	Ideal(Å)
1	1-X	70[A]	GLN	CD-OE1	7.77	1.41	1.24
1	1-X	51[A]	CYS	CB-SG	6.61	1.93	1.82
1	1-X	127[A]	SER	CB-OG	-5.58	1.34	1.42

All (3) bond angle outliers are listed below:

Mol	Chain	Res	Type	Atoms	Z	Observed(°)	Ideal(°)
1	1-X	70[A]	GLN	CG-CD-OE1	-5.33	110.94	121.60
1	1-X	137[A]	TYR	CB-CG-CD2	-5.23	117.86	121.00
1	1-X	137[A]	TYR	CB-CG-CD1	5.01	124.01	121.00

There are no chirality outliers.

All (1) planarity outliers are listed below:

Mol	Chain	Res	Type	Group
1	2-X	106[B]	SER	Peptide

## 5.2 Too-close contacts ⓘ

In the following table, the Non-H and H(model) columns list the number of non-hydrogen atoms and hydrogen atoms in the chain respectively. The H(added) column lists the number of hydrogen atoms added and optimized by MolProbity. The Clashes column lists the number of clashes within the asymmetric unit, whereas Symm-Clashes lists symmetry related clashes.

Mol	Chain	Non-H	H(model)	H(added)	Clashes	Symm-Clashes
1	1-X	1317	0	1289	29	0
1	2-X	1317	0	1289	85	0
2	1-X	2	0	0	0	0
2	2-X	2	0	0	0	0
3	1-X	21	0	13	1	0
3	2-X	21	0	13	1	0
4	1-X	32	0	12	1	0
4	2-X	32	0	12	2	0
5	1-X	199	0	0	3	0
5	2-X	199	0	0	9	0
All	All	3142	0	2628	116	0

The all-atom clashscore is defined as the number of clashes found per 1000 atoms (including hydrogen atoms). The all-atom clashscore for this structure is 22.

All (116) close contacts within the same asymmetric unit are listed below, sorted by their clash magnitude.

Atom-1	Atom-2	Interatomic distance (Å)	Clash overlap (Å)
1:X:37[A]:GLU:C	1:X:38[A]:ASP:OD1	1.82	1.18
1:X:61[B]:GLN:HE21	1:X:63[B]:GLU:N	1.49	1.09
1:X:126[B]:GLU:HB2	1:X:129[B]:GLN:HG3	1.36	1.08
1:X:61[B]:GLN:HE21	1:X:62[B]:GLU:C	1.57	1.07
1:X:37[A]:GLU:O	1:X:38[A]:ASP:OD1	1.79	0.99
1:X:25[B]:GLN:OE1	1:X:27[B]:HIS:HE1	1.46	0.97
1:X:143[B]:GLU:OE1	5:X:2085[B]:HOH:O	1.83	0.95
1:X:126[B]:GLU:HB2	1:X:129[B]:GLN:CG	1.98	0.94
1:X:153[B]:GLU:HG3	1:X:157[B]:TYR:CE2	2.10	0.87
1:X:64[B]:TYR:OH	1:X:69[B]:ASP:HB2	1.76	0.86
1:X:126[B]:GLU:CB	1:X:129[B]:GLN:HG3	2.06	0.85
1:X:61[B]:GLN:NE2	1:X:62[B]:GLU:C	2.31	0.84
3:X:332[B]:XY2:H121	3:X:332[B]:XY2:N7	1.93	0.83
3:X:332[A]:XY2:H121	3:X:332[A]:XY2:N7	1.94	0.82
1:X:101[B]:LYS:HE3	1:X:107[B]:ASP:HA	1.63	0.80
1:X:68[B]:ARG:CZ	1:X:71[B]:TYR:OH	2.31	0.79
1:X:60[B]:GLY:O	1:X:61[B]:GLN:CB	2.33	0.75

*Continued on next page...*

*Continued from previous page...*

Atom-1	Atom-2	Interatomic distance (Å)	Clash overlap (Å)
1:X:69[A]:ASP:OD1	1:X:73[A]:ARG:NH2	2.21	0.74
1:X:88[B]:LYS:NZ	5:X:2106[B]:HOH:O	2.04	0.74
1:X:153[B]:GLU:CG	1:X:157[B]:TYR:CE2	2.71	0.73
1:X:123[B]:ARG:HD3	1:X:125[B]:VAL:O	1.89	0.73
1:X:25[B]:GLN:OE1	1:X:27[B]:HIS:CE1	2.38	0.71
1:X:126[B]:GLU:HB2	1:X:129[B]:GLN:OE1	1.91	0.70
1:X:61[B]:GLN:NE2	1:X:63[B]:GLU:N	2.34	0.69
1:X:29[B]:VAL:HG12	1:X:31[B]:GLU:HG2	1.75	0.69
1:X:153[B]:GLU:HG3	1:X:157[B]:TYR:CZ	2.29	0.67
1:X:126[B]:GLU:O	1:X:129[B]:GLN:HB2	1.96	0.66
1:X:64[B]:TYR:CZ	1:X:69[B]:ASP:HB2	2.30	0.66
1:X:133[B]:LEU:HD11	1:X:137[B]:TYR:CZ	2.31	0.66
1:X:99[A]:GLN:CD	5:X:2193[A]:HOH:O	2.33	0.65
1:X:60[B]:GLY:O	1:X:61[B]:GLN:HB3	1.97	0.65
1:X:126[B]:GLU:HB2	1:X:129[B]:GLN:CD	2.17	0.64
1:X:73[B]:ARG:HD3	1:X:103[B]:VAL:HG13	1.80	0.63
1:X:97[A]:ARG:HD2	1:X:137[A]:TYR:CE2	2.34	0.62
1:X:45[B]:VAL:HA	1:X:49[B]:GLU:O	2.00	0.61
1:X:23[B]:LEU:HD22	1:X:156[B]:PHE:CG	2.35	0.60
1:X:73[B]:ARG:HG3	1:X:103[B]:VAL:HG12	1.83	0.60
1:X:38[A]:ASP:N	1:X:38[A]:ASP:OD1	2.31	0.60
1:X:22[B]:GLN:HG3	1:X:146[B]:ALA:O	2.01	0.59
1:X:126[A]:GLU:OE2	5:X:2134[A]:HOH:O	2.17	0.59
1:X:24[A]:ILE:CD1	1:X:40[A]:TYR:HB3	2.34	0.58
1:X:2[A]:THR:O	1:X:51[A]:CYS:HB2	2.04	0.56
1:X:68[B]:ARG:NH2	1:X:71[B]:TYR:OH	2.38	0.56
1:X:61[B]:GLN:HB3	1:X:96[B]:TYR:CE1	2.41	0.56
1:X:1[B]:MET:N	5:X:2110[B]:HOH:O	2.38	0.56
1:X:37[A]:GLU:OE2	1:X:68[A]:ARG:NH2	2.40	0.54
1:X:68[B]:ARG:HB3	5:X:2193[B]:HOH:O	2.07	0.54
1:X:61[B]:GLN:HE21	1:X:63[B]:GLU:CA	2.18	0.53
1:X:73[B]:ARG:HG3	1:X:103[B]:VAL:CG1	2.38	0.53
1:X:61[B]:GLN:NE2	1:X:62[B]:GLU:O	2.42	0.53
1:X:59[A]:ALA:HB3	1:X:68[A]:ARG:HH22	1.73	0.52
1:X:64[B]:TYR:OH	1:X:69[B]:ASP:CB	2.53	0.52
1:X:154[A]:ASP:O	1:X:158[A]:THR:OG1	2.19	0.52
1:X:68[B]:ARG:CB	5:X:2193[B]:HOH:O	2.58	0.52
1:X:31[A]:GLU:HG3	1:X:33[A]:ASP:OD1	2.11	0.51
1:X:60[B]:GLY:O	1:X:61[B]:GLN:HB2	2.08	0.50
1:X:126[B]:GLU:OE1	1:X:128[B]:ARG:CZ	2.59	0.50
1:X:34[B]:PRO:HA	4:X:1167[B]:GTP:O3G	2.11	0.50

*Continued on next page...*

*Continued from previous page...*

Atom-1	Atom-2	Interatomic distance (Å)	Clash overlap (Å)
1:X:24[A]:ILE:HG13	1:X:40[A]:TYR:CD2	2.47	0.49
1:X:38[B]:ASP:O	1:X:56[B]:LEU:HD12	2.13	0.49
1:X:61[B]:GLN:HG2	1:X:63[B]:GLU:N	2.28	0.49
1:X:123[B]:ARG:HH22	1:X:143[B]:GLU:CD	2.17	0.49
1:X:100[B]:ILE:HG21	1:X:111[B]:MET:CE	2.43	0.48
1:X:60[B]:GLY:O	1:X:96[B]:TYR:HE1	1.97	0.48
1:X:23[B]:LEU:HD22	1:X:156[B]:PHE:CD1	2.49	0.48
1:X:38[B]:ASP:HB3	1:X:40[B]:TYR:CE1	2.49	0.48
1:X:5[B]:LYS:NZ	1:X:76[B]:GLU:OE1	2.46	0.48
1:X:44[B]:VAL:O	1:X:50[B]:THR:HA	2.14	0.48
1:X:10[B]:GLY:O	1:X:60[B]:GLY:HA2	2.14	0.47
1:X:106[B]:SER:CB	1:X:107[B]:ASP:O	2.62	0.47
1:X:13[A]:GLY:O	4:X:1167[A]:GTP:H5'	2.14	0.47
1:X:61[B]:GLN:HB3	1:X:96[B]:TYR:HE1	1.80	0.47
1:X:100[B]:ILE:CG2	1:X:111[B]:MET:HE1	2.43	0.47
1:X:69[B]:ASP:OD1	1:X:73[B]:ARG:HD3	2.15	0.47
1:X:154[A]:ASP:O	1:X:158[A]:THR:CB	2.64	0.46
1:X:95[A]:GLN:HG3	5:X:2124[A]:HOH:O	2.14	0.46
1:X:126[B]:GLU:OE1	1:X:128[B]:ARG:NH1	2.48	0.46
1:X:97[A]:ARG:HD2	1:X:137[A]:TYR:CD2	2.51	0.46
1:X:115[B]:GLY:O	1:X:143[B]:GLU:HA	2.16	0.46
1:X:36[A]:ILE:C	1:X:37[A]:GLU:HG2	2.36	0.46
1:X:10[A]:GLY:HA2	1:X:96[A]:TYR:CE2	2.51	0.45
1:X:64[B]:TYR:HH	1:X:69[B]:ASP:HB2	1.78	0.45
1:X:100[B]:ILE:CG2	1:X:111[B]:MET:CE	2.94	0.45
1:X:127[B]:SER:O	1:X:131[B]:GLN:HG3	2.16	0.45
1:X:106[B]:SER:C	1:X:107[B]:ASP:O	2.55	0.45
1:X:69[B]:ASP:OD1	1:X:73[B]:ARG:NE	2.50	0.45
1:X:21[A]:ILE:HD13	1:X:29[A]:VAL:HG11	1.99	0.45
1:X:24[A]:ILE:HG13	1:X:40[A]:TYR:HB3	1.99	0.44
1:X:61[B]:GLN:NE2	1:X:63[B]:GLU:CA	2.80	0.44
1:X:68[B]:ARG:O	1:X:72[B]:MET:HG3	2.17	0.44
1:X:24[A]:ILE:HG13	1:X:40[A]:TYR:CG	2.53	0.44
1:X:21[A]:ILE:CD1	1:X:29[A]:VAL:HG11	2.48	0.43
1:X:18[B]:ALA:HB2	4:X:1167[B]:GTP:O2A	2.18	0.43
1:X:158[B]:THR:O	1:X:162[B]:GLU:HG2	2.17	0.43
1:X:28[B]:PHE:CD1	1:X:147[B]:LYS:HA	2.53	0.43
1:X:60[B]:GLY:O	1:X:96[B]:TYR:CE1	2.71	0.43
1:X:24[B]:ILE:HD12	1:X:42[B]:LYS:HB2	1.99	0.43
1:X:61[B]:GLN:HG2	1:X:63[B]:GLU:H	1.84	0.43
1:X:9[A]:VAL:HG21	1:X:100[A]:ILE:HD11	2.00	0.43

*Continued on next page...*

Continued from previous page...

Atom-1	Atom-2	Interatomic distance (Å)	Clash overlap (Å)
1:X:27[B]:HIS:HD2	5:X:2157[B]:HOH:O	2.01	0.43
1:X:41[B]:ARG:HA	1:X:53[B]:LEU:O	2.19	0.43
1:X:96[A]:TYR:O	1:X:97[A]:ARG:C	2.58	0.42
1:X:101[B]:LYS:CE	1:X:107[B]:ASP:HA	2.44	0.42
1:X:122[B]:ALA:HB1	5:X:2050[B]:HOH:O	2.19	0.42
1:X:69[A]:ASP:OD1	1:X:73[A]:ARG:CZ	2.67	0.42
1:X:166[B]:HIS:HB3	5:X:2089[B]:HOH:O	2.20	0.42
1:X:5[B]:LYS:NZ	1:X:76[B]:GLU:CD	2.73	0.42
1:X:141[A]:TYR:O	1:X:142[A]:ILE:HD13	2.20	0.41
1:X:61[B]:GLN:NE2	1:X:63[B]:GLU:HA	2.35	0.41
1:X:97[A]:ARG:HD3	1:X:137[A]:TYR:CZ	2.56	0.41
1:X:127[B]:SER:HB2	5:X:2014[B]:HOH:O	2.20	0.41
1:X:152[B]:VAL:O	1:X:153[B]:GLU:C	2.60	0.41
1:X:100[B]:ILE:HG21	1:X:111[B]:MET:HE1	2.02	0.40
1:X:153[B]:GLU:CD	1:X:157[B]:TYR:CE2	2.95	0.40
1:X:47[B]:ASP:OD2	1:X:161[B]:ARG:NH2	2.51	0.40
1:X:88[B]:LYS:HE3	1:X:91[B]:GLU:HB2	2.04	0.40

There are no symmetry-related clashes.

## 5.3 Torsion angles ⓘ

### 5.3.1 Protein backbone ⓘ

In the following table, the Percentiles column shows the percent Ramachandran outliers of the chain as a percentile score with respect to all X-ray entries followed by that with respect to entries of similar resolution.

The Analysed column shows the number of residues for which the backbone conformation was analysed, and the total number of residues.

Mol	Chain	Analysed	Favoured	Allowed	Outliers	Percentiles	
1	1-X	164/166 (99%)	152 (93%)	12 (7%)	0	100	100
1	2-X	164/166 (99%)	154 (94%)	8 (5%)	2 (1%)	13	1
All	All	328/332 (99%)	306 (93%)	20 (6%)	2 (1%)	25	4

All (2) Ramachandran outliers are listed below:

Mol	Chain	Res	Type
1	2-X	61[B]	GLN

Continued on next page...

*Continued from previous page...*

Mol	Chain	Res	Type
1	2-X	152[B]	VAL

### 5.3.2 Protein sidechains ⓘ

In the following table, the Percentiles column shows the percent sidechain outliers of the chain as a percentile score with respect to all X-ray entries followed by that with respect to entries of similar resolution.

The Analysed column shows the number of residues for which the sidechain conformation was analysed, and the total number of residues.

Mol	Chain	Analysed	Rotameric	Outliers	Percentiles
1	1-X	144/144 (100%)	141 (98%)	3 (2%)	53 16

All (3) residues with a non-rotameric sidechain are listed below:

Mol	Chain	Res	Type
1	1-X	37[A]	GLU
1	1-X	38[A]	ASP
1	1-X	107[A]	ASP

Some sidechains can be flipped to improve hydrogen bonding and reduce clashes. All (5) such sidechains are listed below:

Mol	Chain	Res	Type
1	1-X	27[A]	HIS
1	1-X	94[A]	HIS
1	1-X	95[A]	GLN
1	1-X	99[A]	GLN
1	1-X	150[A]	GLN

### 5.3.3 RNA ⓘ

There are no RNA molecules in this entry.

## 5.4 Non-standard residues in protein, DNA, RNA chains ⓘ

There are no non-standard protein/DNA/RNA residues in this entry.

## 5.5 Carbohydrates [i](#)

There are no carbohydrates in this entry.

## 5.6 Ligand geometry [i](#)

Of 8 ligands modelled in this entry, 4 are monoatomic - leaving 4 for Mogul analysis.

In the following table, the Counts columns list the number of bonds (or angles) for which Mogul statistics could be retrieved, the number of bonds (or angles) that are observed in the model and the number of bonds (or angles) that are defined in the Chemical Component Dictionary. The Link column lists molecule types, if any, to which the group is linked. The Z score for a bond length (or angle) is the number of standard deviations the observed value is removed from the expected value. A bond length (or angle) with  $|Z| > 2$  is considered an outlier worth inspection. RMSZ is the root-mean-square of all Z scores of the bond lengths (or angles).

Mol	Type	Chain	Res	Link	Bond lengths			Bond angles		
					Counts	RMSZ	# $ Z  > 2$	Counts	RMSZ	# $ Z  > 2$
3	XY2	2-X	332[B]	-	19,22,22	0.71	1 (5%)	20,31,31	1.32	1 (5%)
3	XY2	1-X	332[A]	1	19,22,22	0.87	1 (5%)	20,31,31	1.25	2 (10%)
4	GTP	1-X	1167[A]	2	26,34,34	0.96	2 (7%)	33,54,54	1.84	6 (18%)
4	GTP	2-X	1167[B]	-	26,34,34	0.93	1 (3%)	33,54,54	1.71	5 (15%)

In the following table, the Chirals column lists the number of chiral outliers, the number of chiral centers analysed, the number of these observed in the model and the number defined in the Chemical Component Dictionary. Similar counts are reported in the Torsion and Rings columns. '-' means no outliers of that kind were identified.

Mol	Type	Chain	Res	Link	Chirals	Torsions	Rings
3	XY2	2-X	332[B]	-	-	4/15/17/17	0/2/2/2
3	XY2	1-X	332[A]	1	-	6/15/17/17	0/2/2/2
4	GTP	1-X	1167[A]	2	-	0/18/38/38	0/3/3/3
4	GTP	2-X	1167[B]	-	-	0/18/38/38	0/3/3/3

All (5) bond length outliers are listed below:

Mol	Chain	Res	Type	Atoms	Z	Observed(Å)	Ideal(Å)
3	1-X	332[A]	XY2	C1-N8	-3.10	1.40	1.45
4	1-X	1167[A]	GTP	C6-N1	2.98	1.38	1.33
4	2-X	1167[B]	GTP	C6-N1	2.97	1.38	1.33
3	2-X	332[B]	XY2	C1-N8	-2.08	1.41	1.45
4	1-X	1167[A]	GTP	C2-N1	2.03	1.39	1.35

All (14) bond angle outliers are listed below:

Mol	Chain	Res	Type	Atoms	Z	Observed(°)	Ideal(°)
4	1-X	1167[A]	GTP	N3-C2-N1	-5.12	120.39	127.22
4	2-X	1167[B]	GTP	N3-C2-N1	-4.79	120.83	127.22
4	1-X	1167[A]	GTP	C5-C6-N1	-4.64	117.08	123.43
4	1-X	1167[A]	GTP	C6-N1-C2	4.60	123.24	115.93
4	2-X	1167[B]	GTP	C6-N1-C2	4.22	122.64	115.93
4	2-X	1167[B]	GTP	C5-C6-N1	-3.90	118.10	123.43
4	2-X	1167[B]	GTP	C6-C5-C4	-3.81	117.16	120.80
3	2-X	332[B]	XY2	C21-C1-N8	3.79	120.52	116.47
4	1-X	1167[A]	GTP	C6-C5-C4	-3.18	117.76	120.80
3	1-X	332[A]	XY2	C21-C1-N8	2.69	119.34	116.47
4	1-X	1167[A]	GTP	PB-O3B-PG	-2.21	125.23	132.83
4	2-X	1167[B]	GTP	N2-C2-N3	2.18	121.35	117.79
4	1-X	1167[A]	GTP	PA-O3A-PB	-2.11	125.60	132.83
3	1-X	332[A]	XY2	C20-C21-C1	-2.10	119.87	121.86

There are no chirality outliers.

All (10) torsion outliers are listed below:

Mol	Chain	Res	Type	Atoms
3	1-X	332[A]	XY2	C2-C1-N8-O9
3	1-X	332[A]	XY2	C21-C1-N8-O9
3	1-X	332[A]	XY2	C20-C4-N11-C12
3	2-X	332[B]	XY2	C20-C4-N11-C12
3	1-X	332[A]	XY2	C3-C4-N11-C12
3	2-X	332[B]	XY2	C3-C4-N11-C12
3	2-X	332[B]	XY2	C14-C13-N11-C12
3	1-X	332[A]	XY2	C3-C4-N11-C13
3	2-X	332[B]	XY2	C3-C4-N11-C13
3	1-X	332[A]	XY2	C14-C13-N11-C12

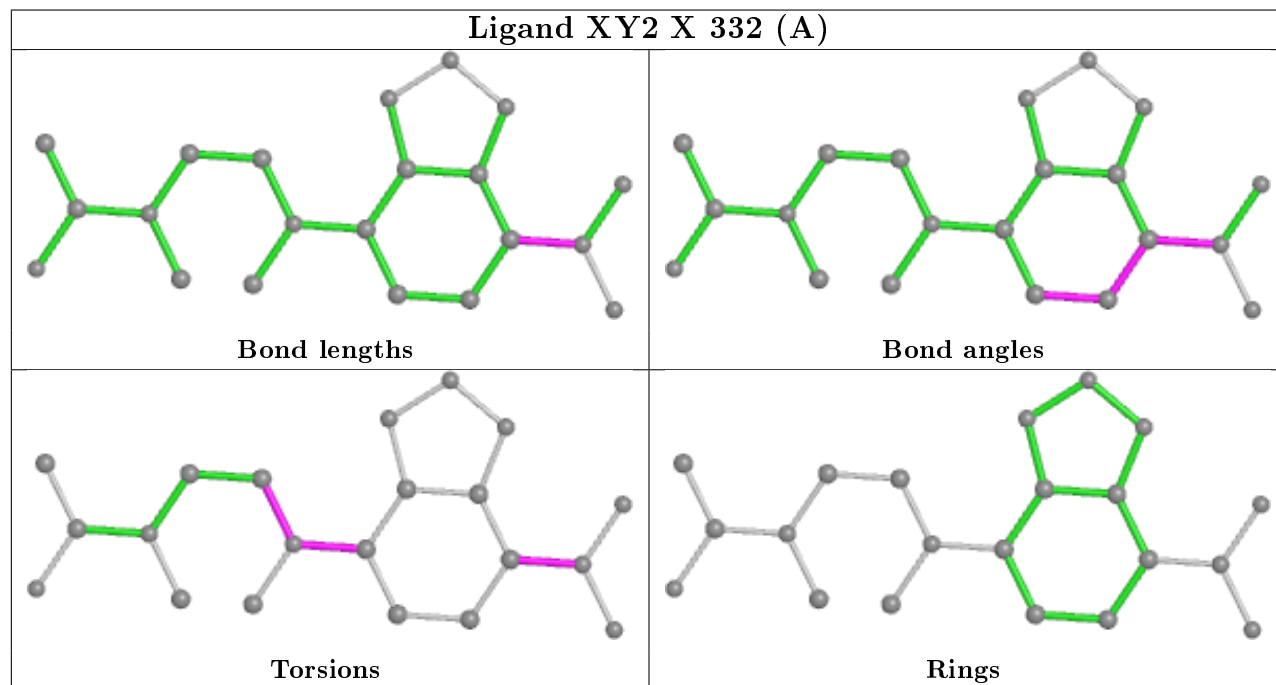
There are no ring outliers.

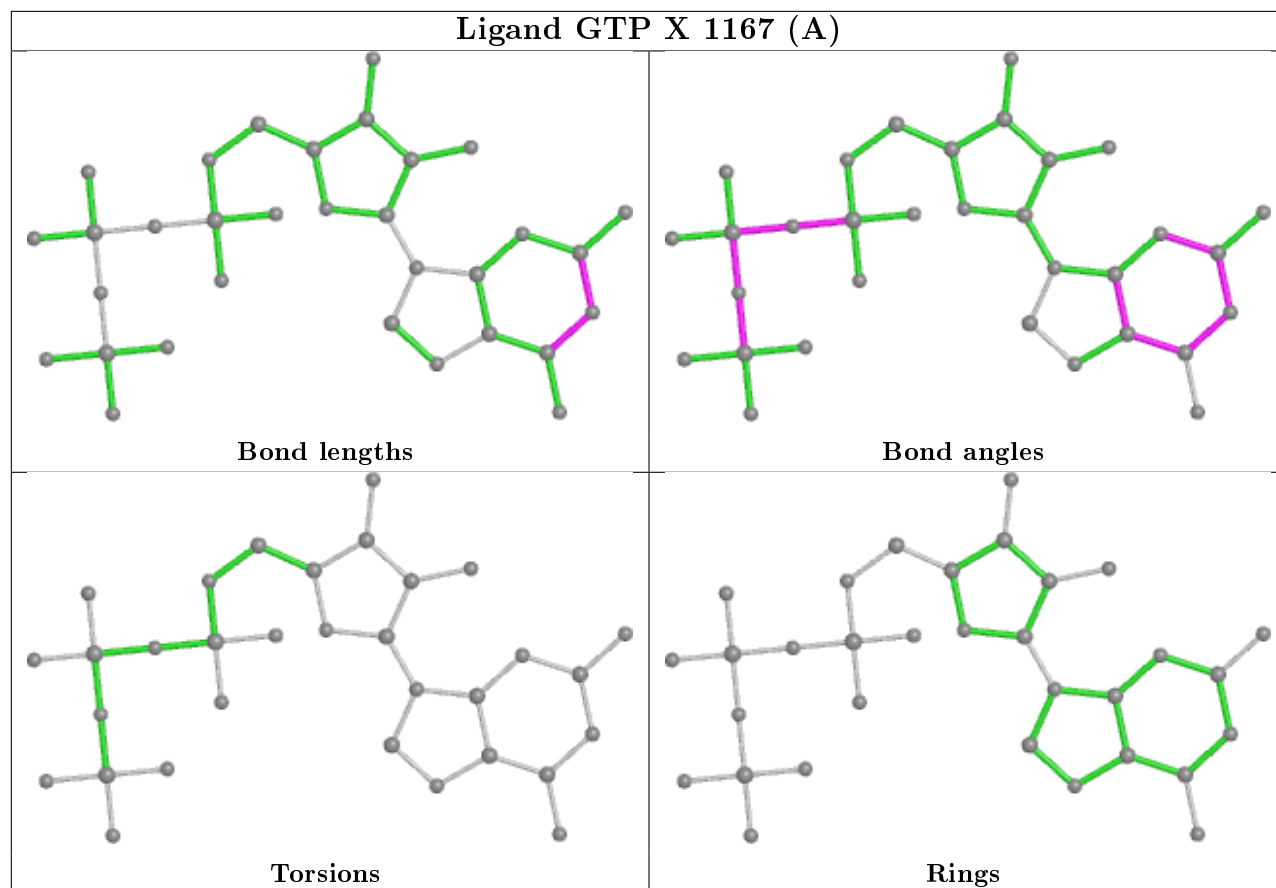
4 monomers are involved in 5 short contacts:

Mol	Chain	Res	Type	Clashes	Symm-Clashes
3	2-X	332[B]	XY2	1	0
3	1-X	332[A]	XY2	1	0
4	1-X	1167[A]	GTP	1	0
4	2-X	1167[B]	GTP	2	0

The following is a two-dimensional graphical depiction of Mogul quality analysis of bond lengths, bond angles, torsion angles, and ring geometry for all instances of the Ligand of Interest. In

addition, ligands with molecular weight > 250 and outliers as shown on the validation Tables will also be included. For torsion angles, if less than 5% of the Mogul distribution of torsion angles is within 10 degrees of the torsion angle in question, then that torsion angle is considered an outlier. Any bond that is central to one or more torsion angles identified as an outlier by Mogul will be highlighted in the graph. For rings, the root-mean-square deviation (RMSD) between the ring in question and similar rings identified by Mogul is calculated over all ring torsion angles. If the average RMSD is greater than 60 degrees and the minimal RMSD between the ring in question and any Mogul-identified rings is also greater than 60 degrees, then that ring is considered an outlier. The outliers are highlighted in purple. The color gray indicates Mogul did not find sufficient equivalents in the CSD to analyse the geometry.





## 5.7 Other polymers [i](#)

There are no such residues in this entry.

## 5.8 Polymer linkage issues [i](#)

There are no chain breaks in this entry.

## 6 Fit of model and data ⓘ

### 6.1 Protein, DNA and RNA chains ⓘ

Unable to reproduce the depositors R factor - this section is therefore empty.

### 6.2 Non-standard residues in protein, DNA, RNA chains ⓘ

Unable to reproduce the depositors R factor - this section is therefore empty.

### 6.3 Carbohydrates ⓘ

Unable to reproduce the depositors R factor - this section is therefore empty.

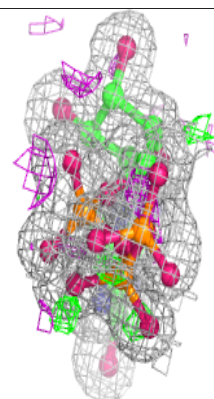
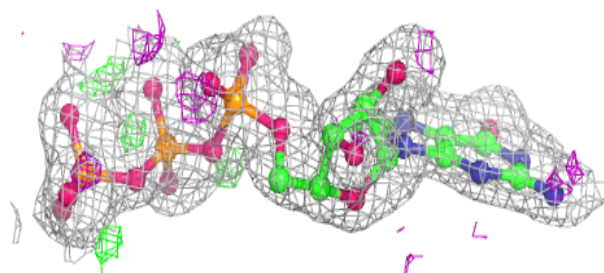
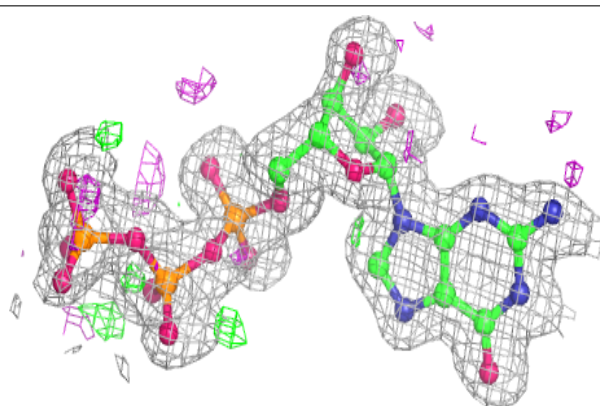
### 6.4 Ligands ⓘ

Unable to reproduce the depositors R factor - this section is therefore empty.

The following is a graphical depiction of the model fit to experimental electron density of all instances of the Ligand of Interest. In addition, ligands with molecular weight > 250 and outliers as shown on the geometry validation Tables will also be included. Each fit is shown from different orientation to approximate a three-dimensional view.

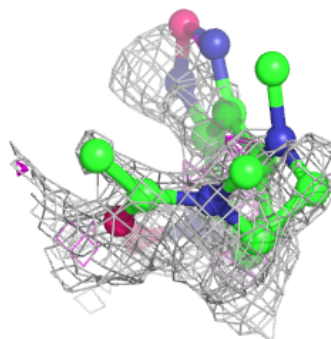
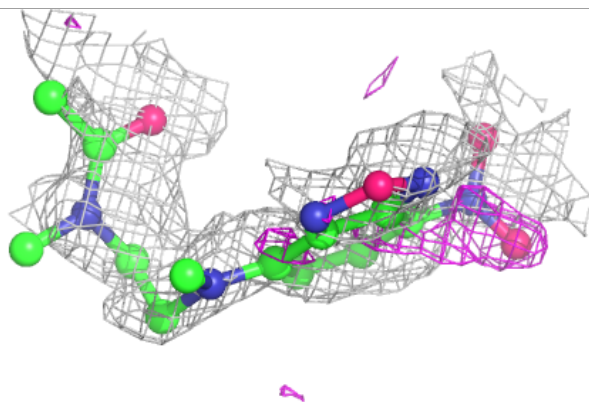
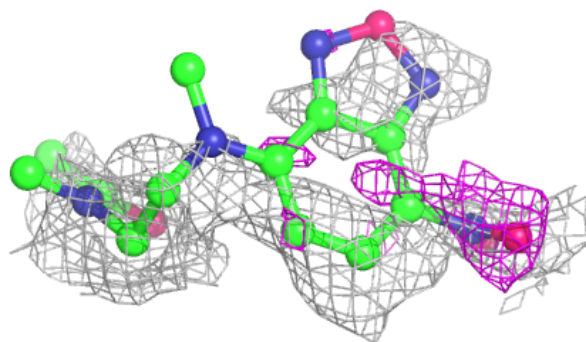
#### Electron density around GTP X 1167 (A):

$2mF_o - DF_c$  (at 0.7 rmsd) in gray  
 $mF_o - DF_c$  (at 3 rmsd) in purple (negative)  
and green (positive)



**Electron density around XY2 X 332 (A):**

$2mF_o-DF_c$  (at 0.7 rmsd) in gray  
 $mF_o-DF_c$  (at 3 rmsd) in purple (negative)  
and green (positive)



## 6.5 Other polymers [i](#)

Unable to reproduce the depositors R factor - this section is therefore empty.