



Full wwPDB EM Validation Report ⓘ

Nov 20, 2022 – 07:44 PM JST

PDB ID : 7CN0
EMDB ID : EMD-30412
Title : Cryo-EM structure of K⁺-bound hERG channel
Authors : Asai, T.; Adachi, N.; Moriya, T.; Kawasaki, M.; Suzuki, K.; Senda, T.; Murata, T.
Deposited on : 2020-07-29
Resolution : 3.90 Å(reported)

This is a Full wwPDB EM Validation Report for a publicly released PDB entry.

We welcome your comments at validation@mail.wwpdb.org

A user guide is available at

<https://www.wwpdb.org/validation/2017/EMValidationReportHelp>
with specific help available everywhere you see the ⓘ symbol.

The types of validation reports are described at

<http://www.wwpdb.org/validation/2017/FAQs#types>.

The following versions of software and data (see [references ⓘ](#)) were used in the production of this report:

EMDB validation analysis : 0.0.1.dev43
MolProbity : 4.02b-467
Percentile statistics : 20191225.v01 (using entries in the PDB archive December 25th 2019)
MapQ : 1.9.9
Ideal geometry (proteins) : Engh & Huber (2001)
Ideal geometry (DNA, RNA) : Parkinson et al. (1996)
Validation Pipeline (wwPDB-VP) : 2.31.3

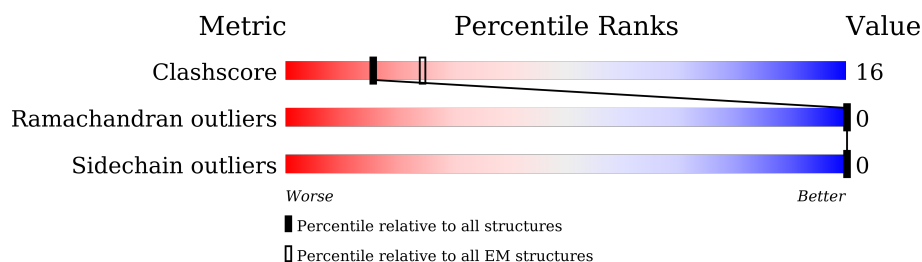
1 Overall quality at a glance

The following experimental techniques were used to determine the structure:

ELECTRON MICROSCOPY

The reported resolution of this entry is 3.90 Å.

Percentile scores (ranging between 0-100) for global validation metrics of the entry are shown in the following graphic. The table shows the number of entries on which the scores are based.



Metric	Whole archive (#Entries)	EM structures (#Entries)
Clashscore	158937	4297
Ramachandran outliers	154571	4023
Sidechain outliers	154315	3826

The table below summarises the geometric issues observed across the polymeric chains and their fit to the map. The red, orange, yellow and green segments of the bar indicate the fraction of residues that contain outliers for ≥ 3 , 2, 1 and 0 types of geometric quality criteria respectively. A grey segment represents the fraction of residues that are not modelled. The numeric value for each fraction is indicated below the corresponding segment, with a dot representing fractions $\leq 5\%$. The upper red bar (where present) indicates the fraction of residues that have poor fit to the EM map (all-atom inclusion $< 40\%$). The numeric value is given above the bar.

Mol	Chain	Length	Quality of chain
1	A	820	 22% 5% 73%
1	B	820	 22% 5% 73%
1	C	820	 22% 5% 73%
1	D	820	 22% 5% 73%

2 Entry composition

There are 2 unique types of molecules in this entry. The entry contains 6602 atoms, of which 0 are hydrogens and 0 are deuteriums.

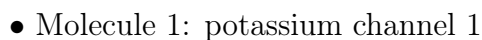
In the tables below, the AltConf column contains the number of residues with at least one atom in alternate conformation and the Trace column contains the number of residues modelled with at most 2 atoms.

- Molecule 1 is a protein called potassium channel 1.

Mol	Chain	Residues	Atoms					AltConf	Trace
1	A	221	Total	C	N	O	S	0	0
			1650	1103	269	272	6		
1	B	221	Total	C	N	O	S	0	0
			1650	1103	269	272	6		
1	C	221	Total	C	N	O	S	0	0
			1650	1103	269	272	6		
1	D	221	Total	C	N	O	S	0	0
			1650	1103	269	272	6		

- Molecule 2 is POTASSIUM ION (three-letter code: K) (formula: K) (labeled as "Ligand of Interest" by depositor).

Mol	Chain	Residues	Atoms		AltConf
2	A	2	Total	K	0
			2	2	





ASN	ALA	PRO
MET	THR	PRO
ILE	VAL	GLY
PRO	LEU	ALA
GLY	PRO	PRO
GLY	LEU	GLU
ARG	LEU	LEU
GLN	GLN	PRO
TYR	ARG	GLN
GLN	GLN	GLU
GLU	MET	GLY
LEU	THR	PRO
PRO	LEU	THR
ARG	VAL	ARG
CYS	PRO	ARG
PRO	PRO	LEU
ALA	ALA	SER
PRO	TYR	LEU
THR	SER	PRO
PRO	ALA	GLY
SER	VAL	GLN
LEU	THR	LEU
LEU	THR	GLY
ASN	PRO	ALA
ILE	GLY	LEU
PRO	PRO	THR
LEU	GLY	SER
SER	PRO	GLN
PRO	THR	LEU
GLY	THR	PRO
ARG	SER	HIS
ARG	PRO	ARG
PRO	LEU	HIS
ARG	LEU	GLY
GLY	SER	SER
ASP	PRO	ASP
ASP	VAL	PRO
VAL	SER	GLY
GLU	PRO	GLY
SER	LEU	SER
ARG	PRO	LEU
LEU	THR	GLU
ASP	LEU	VAL
ALA	THR	LEU
LEU	THR	PHE
GLN	LEU	GLN
ASP	ASP	
SER	SER	
LEU	LEU	
SER	SER	
GLN	GLN	
VAL	VAL	
SER	SER	
GLN	GLN	
THR	PHE	
ARG	MET	
LEU	ALA	
SER	CYS	
ALA	GLU	
ASP	GLU	
MET	LEU	

4 Experimental information

Property	Value	Source
EM reconstruction method	SINGLE PARTICLE	Depositor
Imposed symmetry	POINT, C4	Depositor
Number of particles used	173770	Depositor
Resolution determination method	FSC 0.143 CUT-OFF	Depositor
CTF correction method	PHASE FLIPPING AND AMPLITUDE CORRECTION	Depositor
Microscope	FEI TALOS ARCTICA	Depositor
Voltage (kV)	200	Depositor
Electron dose ($e^-/\text{\AA}^2$)	50.0	Depositor
Minimum defocus (nm)	1000	Depositor
Maximum defocus (nm)	2500	Depositor
Magnification	120000	Depositor
Image detector	FEI FALCON III (4k x 4k)	Depositor
Maximum map value	39.604	Depositor
Minimum map value	-28.443	Depositor
Average map value	-0.000	Depositor
Map value standard deviation	1.000	Depositor
Recommended contour level	5.31	Depositor
Map size (Å)	318.24, 318.24, 318.24	wwPDB
Map dimensions	360, 360, 360	wwPDB
Map angles (°)	90.0, 90.0, 90.0	wwPDB
Pixel spacing (Å)	0.88399994, 0.88399994, 0.88399994	Depositor

5 Model quality

5.1 Standard geometry

Bond lengths and bond angles in the following residue types are not validated in this section: K

The Z score for a bond length (or angle) is the number of standard deviations the observed value is removed from the expected value. A bond length (or angle) with $|Z| > 5$ is considered an outlier worth inspection. RMSZ is the root-mean-square of all Z scores of the bond lengths (or angles).

Mol	Chain	Bond lengths		Bond angles	
		RMSZ	$\# Z > 5$	RMSZ	$\# Z > 5$
1	A	0.28	0/1689	0.43	0/2306
1	B	0.28	0/1689	0.43	0/2306
1	C	0.28	0/1689	0.43	0/2306
1	D	0.28	0/1689	0.43	0/2306
All	All	0.28	0/6756	0.43	0/9224

There are no bond length outliers.

There are no bond angle outliers.

There are no chirality outliers.

There are no planarity outliers.

5.2 Too-close contacts

In the following table, the Non-H and H(model) columns list the number of non-hydrogen atoms and hydrogen atoms in the chain respectively. The H(added) column lists the number of hydrogen atoms added and optimized by MolProbity. The Clashes column lists the number of clashes within the asymmetric unit, whereas Symm-Clashes lists symmetry-related clashes.

Mol	Chain	Non-H	H(model)	H(added)	Clashes	Symm-Clashes
1	A	1650	0	1637	87	0
1	B	1650	0	1637	82	0
1	C	1650	0	1637	85	0
1	D	1650	0	1637	87	0
2	A	2	0	0	0	0
All	All	6602	0	6548	214	0

The all-atom clashscore is defined as the number of clashes found per 1000 atoms (including hydrogen atoms). The all-atom clashscore for this structure is 16.

All (214) close contacts within the same asymmetric unit are listed below, sorted by their clash magnitude.

Atom-1	Atom-2	Interatomic distance (Å)	Clash overlap (Å)
1:A:554:MET:HE2	1:B:646:LEU:CD2	1.17	1.55
1:A:646:LEU:CD2	1:D:554:MET:HE1	1.27	1.55
1:C:554:MET:CE	1:D:646:LEU:HD21	1.37	1.54
1:A:646:LEU:CG	1:D:554:MET:CE	1.84	1.52
1:B:554:MET:CE	1:C:646:LEU:CG	1.84	1.52
1:B:554:MET:CE	1:C:646:LEU:HD21	1.37	1.52
1:A:646:LEU:HD21	1:D:554:MET:CE	1.37	1.52
1:A:554:MET:CE	1:B:646:LEU:CG	1.84	1.51
1:C:554:MET:CE	1:D:646:LEU:CG	1.84	1.51
1:A:554:MET:CE	1:B:646:LEU:HD21	1.37	1.49
1:C:554:MET:CE	1:D:646:LEU:CD2	1.87	1.48
1:C:554:MET:HE1	1:D:646:LEU:CD2	1.40	1.48
1:B:554:MET:CE	1:C:646:LEU:CD2	1.87	1.47
1:B:554:MET:HE3	1:C:646:LEU:CD1	1.48	1.43
1:A:646:LEU:CD2	1:D:554:MET:CE	1.87	1.41
1:C:554:MET:HE3	1:D:646:LEU:CD1	1.60	1.30
1:A:554:MET:CE	1:B:646:LEU:CD1	2.12	1.27
1:A:646:LEU:CD1	1:D:554:MET:CE	2.12	1.26
1:B:554:MET:HE2	1:C:646:LEU:CD2	1.48	1.26
1:C:554:MET:CE	1:D:646:LEU:CD1	2.12	1.25
1:B:554:MET:CE	1:C:646:LEU:CD1	2.12	1.24
1:A:554:MET:CE	1:B:646:LEU:CD2	1.87	1.21
1:C:554:MET:CE	1:D:646:LEU:HG	1.70	1.20
1:C:554:MET:CE	1:D:646:LEU:HD11	1.69	1.19
1:A:554:MET:HE3	1:B:646:LEU:CD1	1.69	1.18
1:A:646:LEU:HD11	1:D:554:MET:CE	1.69	1.18
1:A:554:MET:CE	1:B:646:LEU:HD11	1.69	1.17
1:A:646:LEU:CD1	1:D:554:MET:HE3	1.73	1.17
1:A:554:MET:HE1	1:B:646:LEU:CG	1.56	1.16
1:B:554:MET:CE	1:C:646:LEU:HD11	1.69	1.15
1:C:554:MET:HE1	1:D:646:LEU:CG	1.63	1.14
1:A:646:LEU:HD21	1:D:554:MET:HE2	1.30	1.12
1:B:554:MET:HE1	1:C:646:LEU:CG	1.56	1.10
1:A:646:LEU:CG	1:D:554:MET:HE3	1.61	1.10
1:A:642:ILE:HD11	1:D:616:TYR:HA	1.35	1.08
1:C:616:TYR:HA	1:D:642:ILE:HD11	1.35	1.08
1:C:554:MET:HE3	1:D:646:LEU:CG	1.67	1.07
1:A:616:TYR:HA	1:B:642:ILE:HD11	1.35	1.07
1:B:554:MET:HE1	1:C:646:LEU:HG	1.16	1.06
1:B:616:TYR:HA	1:C:642:ILE:HD11	1.35	1.06

Continued on next page...

Continued from previous page...

Atom-1	Atom-2	Interatomic distance (Å)	Clash overlap (Å)
1:A:646:LEU:HG	1:D:554:MET:HE3	1.23	1.06
1:C:554:MET:HE2	1:D:646:LEU:HD21	1.09	1.06
1:A:646:LEU:HD11	1:D:554:MET:HE2	1.26	1.05
1:A:554:MET:HE3	1:B:646:LEU:HD11	1.06	1.05
1:A:554:MET:HE1	1:B:646:LEU:HG	1.08	1.03
1:B:554:MET:HE3	1:C:646:LEU:HD11	1.05	1.02
1:B:554:MET:HE1	1:C:646:LEU:CD2	1.61	1.01
1:A:646:LEU:HG	1:D:554:MET:CE	1.70	1.01
1:B:554:MET:CE	1:C:646:LEU:HG	1.70	0.99
1:A:646:LEU:CD1	1:D:554:MET:HE2	1.82	0.98
1:C:554:MET:HE2	1:D:646:LEU:CD2	1.69	0.98
1:B:616:TYR:HA	1:C:642:ILE:CD1	1.93	0.98
1:C:616:TYR:HA	1:D:642:ILE:CD1	1.93	0.98
1:A:642:ILE:CD1	1:D:616:TYR:HA	1.93	0.97
1:A:616:TYR:HA	1:B:642:ILE:CD1	1.93	0.97
1:A:554:MET:CE	1:B:646:LEU:HG	1.70	0.97
1:C:554:MET:HE3	1:D:646:LEU:HD11	1.31	0.97
1:A:554:MET:HE1	1:B:646:LEU:CD1	1.87	0.95
1:C:554:MET:HE2	1:D:646:LEU:HD11	1.47	0.94
1:A:646:LEU:CG	1:D:554:MET:HE1	1.69	0.90
1:A:554:MET:HE3	1:B:646:LEU:HD21	1.50	0.89
1:B:554:MET:HE3	1:C:646:LEU:CG	1.75	0.88
1:C:616:TYR:CA	1:D:642:ILE:HD11	2.04	0.88
1:A:616:TYR:CA	1:B:642:ILE:HD11	2.04	0.88
1:A:642:ILE:HD11	1:D:616:TYR:CA	2.03	0.88
1:B:616:TYR:CA	1:C:642:ILE:HD11	2.04	0.88
1:A:554:MET:HE2	1:B:646:LEU:CG	1.76	0.88
1:A:554:MET:HE2	1:B:646:LEU:HD23	1.54	0.84
1:A:646:LEU:HD23	1:D:554:MET:HE1	1.56	0.83
1:A:554:MET:HE3	1:B:646:LEU:CD2	1.99	0.81
1:C:554:MET:HE1	1:D:646:LEU:HG	1.38	0.81
1:C:554:MET:HE3	1:D:646:LEU:HG	1.41	0.81
1:B:554:MET:HE2	1:C:646:LEU:HD21	0.80	0.79
1:C:554:MET:HE2	1:D:646:LEU:CD1	1.97	0.79
1:A:554:MET:HE2	1:B:646:LEU:HD21	0.79	0.79
1:A:620:SER:N	1:B:645:MET:HE1	1.99	0.78
1:A:646:LEU:CD2	1:D:554:MET:HE2	1.84	0.76
1:C:620:SER:N	1:D:645:MET:HE1	2.02	0.75
1:A:645:MET:HE1	1:D:620:SER:N	2.03	0.74
1:B:620:SER:N	1:C:645:MET:HE1	2.04	0.71
1:C:554:MET:HE1	1:D:646:LEU:HD23	1.66	0.67

Continued on next page...

Continued from previous page...

Atom-1	Atom-2	Interatomic distance (Å)	Clash overlap (Å)
1:A:646:LEU:HD11	1:D:554:MET:HE3	1.52	0.66
1:A:646:LEU:HD21	1:D:554:MET:HE1	1.01	0.63
1:A:642:ILE:HD11	1:D:616:TYR:CB	2.30	0.62
1:C:616:TYR:CB	1:D:642:ILE:HD11	2.30	0.61
1:A:645:MET:HE1	1:D:619:PHE:C	2.21	0.61
1:A:616:TYR:CB	1:B:642:ILE:HD11	2.30	0.61
1:B:619:PHE:C	1:C:645:MET:HE1	2.21	0.60
1:B:616:TYR:CB	1:C:642:ILE:HD11	2.30	0.60
1:C:619:PHE:C	1:D:645:MET:HE1	2.21	0.60
1:A:466:ASP:HA	1:A:469:ILE:HD12	1.84	0.59
1:D:466:ASP:HA	1:D:469:ILE:HD12	1.84	0.59
1:C:466:ASP:HA	1:C:469:ILE:HD12	1.84	0.59
1:C:503:VAL:HA	1:C:506:ILE:HD12	1.85	0.59
1:D:503:VAL:HA	1:D:506:ILE:HD12	1.85	0.59
1:A:619:PHE:C	1:B:645:MET:HE1	2.23	0.59
1:B:620:SER:HA	1:C:645:MET:HE3	1.85	0.59
1:B:466:ASP:HA	1:B:469:ILE:HD12	1.84	0.59
1:B:503:VAL:HA	1:B:506:ILE:HD12	1.85	0.58
1:B:554:MET:HE2	1:C:646:LEU:HD11	1.73	0.58
1:A:503:VAL:HA	1:A:506:ILE:HD12	1.85	0.58
1:B:554:MET:HE2	1:C:646:LEU:CD1	2.15	0.56
1:A:645:MET:HE3	1:D:620:SER:HA	1.87	0.56
1:A:616:TYR:OH	1:A:629:ASN:ND2	2.37	0.55
1:D:616:TYR:OH	1:D:629:ASN:ND2	2.37	0.55
1:D:461:ILE:O	1:D:465:VAL:HG23	2.08	0.54
1:B:638:LYS:O	1:B:642:ILE:HG12	2.08	0.54
1:C:620:SER:HA	1:D:645:MET:HE3	1.90	0.54
1:C:638:LYS:O	1:C:642:ILE:HG12	2.08	0.54
1:A:461:ILE:O	1:A:465:VAL:HG23	2.08	0.53
1:B:414:ILE:HG13	1:B:417:LEU:HD11	1.90	0.53
1:B:616:TYR:OH	1:B:629:ASN:ND2	2.37	0.53
1:A:414:ILE:HG13	1:A:417:LEU:HD11	1.90	0.53
1:C:414:ILE:HG13	1:C:417:LEU:HD11	1.90	0.53
1:A:619:PHE:HB3	1:B:645:MET:HE2	1.89	0.53
1:B:461:ILE:O	1:B:465:VAL:HG23	2.08	0.53
1:D:638:LYS:O	1:D:642:ILE:HG12	2.08	0.53
1:A:638:LYS:O	1:A:642:ILE:HG12	2.08	0.53
1:D:414:ILE:HG13	1:D:417:LEU:HD11	1.90	0.52
1:C:461:ILE:O	1:C:465:VAL:HG23	2.08	0.52
1:C:616:TYR:OH	1:C:629:ASN:ND2	2.37	0.52
1:B:616:TYR:HB2	1:C:642:ILE:HD11	1.92	0.52

Continued on next page...

Continued from previous page...

Atom-1	Atom-2	Interatomic distance (Å)	Clash overlap (Å)
1:A:616:TYR:HB2	1:B:642:ILE:HD11	1.92	0.51
1:C:616:TYR:HB2	1:D:642:ILE:HD11	1.92	0.51
1:C:456:ASP:OD1	1:C:456:ASP:N	2.44	0.51
1:B:619:PHE:C	1:C:645:MET:CE	2.79	0.51
1:C:619:PHE:C	1:D:645:MET:CE	2.79	0.51
1:A:645:MET:CE	1:D:619:PHE:C	2.79	0.51
1:B:554:MET:HE3	1:C:646:LEU:HG	1.63	0.51
1:D:456:ASP:N	1:D:456:ASP:OD1	2.44	0.51
1:A:464:ILE:O	1:A:468:LEU:HG	2.11	0.50
1:A:642:ILE:HD11	1:D:616:TYR:HB2	1.92	0.50
1:A:619:PHE:C	1:B:645:MET:CE	2.79	0.50
1:B:464:ILE:O	1:B:468:LEU:HG	2.11	0.50
1:D:464:ILE:O	1:D:468:LEU:HG	2.11	0.50
1:C:464:ILE:O	1:C:468:LEU:HG	2.11	0.50
1:A:456:ASP:N	1:A:456:ASP:OD1	2.44	0.50
1:A:641:SER:HA	1:A:644:VAL:HG12	1.94	0.49
1:A:656:PHE:HA	1:A:659:VAL:HG12	1.94	0.49
1:C:656:PHE:HA	1:C:659:VAL:HG12	1.94	0.49
1:A:646:LEU:HG	1:D:554:MET:HE1	1.55	0.49
1:B:656:PHE:HA	1:B:659:VAL:HG12	1.94	0.49
1:D:656:PHE:HA	1:D:659:VAL:HG12	1.94	0.49
1:A:624:SER:HA	1:D:625:VAL:HG22	1.95	0.49
1:B:456:ASP:OD1	1:B:456:ASP:N	2.44	0.49
1:C:553:LEU:HA	1:C:556:THR:HG22	1.95	0.49
1:C:625:VAL:HG22	1:D:624:SER:HA	1.95	0.49
1:B:625:VAL:HG22	1:C:624:SER:HA	1.95	0.49
1:D:641:SER:HA	1:D:644:VAL:HG12	1.94	0.49
1:B:641:SER:HA	1:B:644:VAL:HG12	1.94	0.48
1:D:553:LEU:HA	1:D:556:THR:HG22	1.95	0.48
1:B:411:ASP:O	1:B:414:ILE:HG22	2.13	0.48
1:A:625:VAL:HG22	1:B:624:SER:HA	1.95	0.48
1:C:641:SER:HA	1:C:644:VAL:HG12	1.94	0.48
1:D:411:ASP:O	1:D:414:ILE:HG22	2.13	0.48
1:A:411:ASP:O	1:A:414:ILE:HG22	2.13	0.47
1:A:553:LEU:HA	1:A:556:THR:HG22	1.95	0.47
1:C:411:ASP:O	1:C:414:ILE:HG22	2.13	0.47
1:B:553:LEU:HA	1:B:556:THR:HG22	1.95	0.47
1:C:620:SER:HA	1:D:645:MET:CE	2.46	0.46
1:A:620:SER:HA	1:B:645:MET:CE	2.46	0.46
1:A:645:MET:CE	1:D:620:SER:HA	2.46	0.46
1:A:593:ILE:O	1:A:595:LYS:N	2.45	0.46

Continued on next page...

Continued from previous page...

Atom-1	Atom-2	Interatomic distance (Å)	Clash overlap (Å)
1:B:620:SER:HA	1:C:645:MET:CE	2.46	0.45
1:C:414:ILE:HA	1:C:417:LEU:HG	1.99	0.45
1:B:415:LEU:HD13	1:B:542:TYR:CZ	2.52	0.45
1:D:589:LEU:HD12	1:D:613:THR:HG21	1.99	0.45
1:B:593:ILE:O	1:B:595:LYS:N	2.45	0.45
1:A:620:SER:CA	1:B:645:MET:HE1	2.47	0.44
1:A:415:LEU:HD13	1:A:542:TYR:CZ	2.52	0.44
1:C:415:LEU:HD13	1:C:542:TYR:CZ	2.52	0.44
1:D:414:ILE:HA	1:D:417:LEU:HG	1.99	0.44
1:C:616:TYR:HA	1:D:642:ILE:HD12	1.90	0.44
1:C:619:PHE:HB3	1:D:645:MET:HE2	1.99	0.44
1:A:414:ILE:HA	1:A:417:LEU:HG	1.99	0.44
1:D:411:ASP:HA	1:D:414:ILE:HG22	2.00	0.44
1:A:620:SER:HA	1:B:645:MET:HE3	2.00	0.44
1:D:415:LEU:HD13	1:D:542:TYR:CZ	2.52	0.44
1:A:411:ASP:HA	1:A:414:ILE:HG22	2.00	0.43
1:A:589:LEU:HD12	1:A:613:THR:HG21	1.99	0.43
1:C:589:LEU:HD12	1:C:613:THR:HG21	1.99	0.43
1:C:411:ASP:HA	1:C:414:ILE:HG22	2.00	0.43
1:B:589:LEU:HD12	1:B:613:THR:HG21	1.99	0.43
1:B:414:ILE:HA	1:B:417:LEU:HG	1.99	0.43
1:B:616:TYR:HA	1:C:642:ILE:HD12	1.90	0.43
1:D:651:MET:O	1:D:655:ILE:HG12	2.19	0.43
1:A:651:MET:O	1:A:655:ILE:HG12	2.19	0.43
1:B:411:ASP:HA	1:B:414:ILE:HG22	2.00	0.42
1:C:627:PHE:HE2	1:D:645:MET:SD	2.42	0.42
1:C:651:MET:O	1:C:655:ILE:HG12	2.19	0.42
1:B:651:MET:O	1:B:655:ILE:HG12	2.19	0.42
1:C:593:ILE:O	1:C:595:LYS:N	2.45	0.42
1:A:642:ILE:HD12	1:D:616:TYR:HA	1.90	0.42
1:A:645:MET:SD	1:D:627:PHE:HE2	2.43	0.42
1:A:627:PHE:HE2	1:B:645:MET:SD	2.43	0.41
1:A:644:VAL:HA	1:A:647:ILE:HG22	2.03	0.41
1:D:593:ILE:O	1:D:595:LYS:N	2.45	0.41
1:B:627:PHE:HE2	1:C:645:MET:SD	2.43	0.41
1:D:528:ARG:O	1:D:531:ARG:HD2	2.20	0.41
1:A:616:TYR:HA	1:B:642:ILE:HD12	1.90	0.41
1:A:553:LEU:HA	1:A:553:LEU:HD23	1.87	0.41
1:C:528:ARG:O	1:C:531:ARG:HD2	2.20	0.41
1:D:644:VAL:HA	1:D:647:ILE:HG22	2.03	0.41
1:A:427:TYR:O	1:A:431:PHE:HB2	2.21	0.41

Continued on next page...

Continued from previous page...

Atom-1	Atom-2	Interatomic distance (Å)	Clash overlap (Å)
1:B:644:VAL:HA	1:B:647:ILE:HG22	2.03	0.41
1:C:427:TYR:O	1:C:431:PHE:HB2	2.21	0.41
1:D:427:TYR:O	1:D:431:PHE:HB2	2.21	0.41
1:A:645:MET:HE2	1:D:619:PHE:HB3	2.02	0.41
1:C:644:VAL:HA	1:C:647:ILE:HG22	2.03	0.40
1:D:553:LEU:HA	1:D:553:LEU:HD23	1.87	0.40
1:C:553:LEU:HA	1:C:553:LEU:HD23	1.87	0.40
1:C:585:TRP:HZ3	1:C:589:LEU:HD13	1.87	0.40
1:A:473:THR:OG1	1:A:474:THR:N	2.55	0.40
1:B:528:ARG:O	1:B:531:ARG:HD2	2.20	0.40

There are no symmetry-related clashes.

5.3 Torsion angles ⓘ

5.3.1 Protein backbone ⓘ

In the following table, the Percentiles column shows the percent Ramachandran outliers of the chain as a percentile score with respect to all PDB entries followed by that with respect to all EM entries.

The Analysed column shows the number of residues for which the backbone conformation was analysed, and the total number of residues.

Mol	Chain	Analysed	Favoured	Allowed	Outliers	Percentiles	
1	A	209/820 (26%)	192 (92%)	17 (8%)	0	100	100
1	B	209/820 (26%)	192 (92%)	17 (8%)	0	100	100
1	C	209/820 (26%)	192 (92%)	17 (8%)	0	100	100
1	D	209/820 (26%)	192 (92%)	17 (8%)	0	100	100
All	All	836/3280 (26%)	768 (92%)	68 (8%)	0	100	100

There are no Ramachandran outliers to report.

5.3.2 Protein sidechains ⓘ

In the following table, the Percentiles column shows the percent sidechain outliers of the chain as a percentile score with respect to all PDB entries followed by that with respect to all EM entries.

The Analysed column shows the number of residues for which the sidechain conformation was analysed, and the total number of residues.

Mol	Chain	Analysed	Rotameric	Outliers	Percentiles	
1	A	162/706 (23%)	162 (100%)	0	100	100
1	B	162/706 (23%)	162 (100%)	0	100	100
1	C	162/706 (23%)	162 (100%)	0	100	100
1	D	162/706 (23%)	162 (100%)	0	100	100
All	All	648/2824 (23%)	648 (100%)	0	100	100

There are no protein residues with a non-rotameric sidechain to report.

Sometimes sidechains can be flipped to improve hydrogen bonding and reduce clashes. All (19) such sidechains are listed below:

Mol	Chain	Res	Type
1	A	470	ASN
1	A	562	HIS
1	A	576	GLN
1	A	587	HIS
1	A	588	ASN
1	B	470	ASN
1	B	562	HIS
1	B	576	GLN
1	B	587	HIS
1	B	588	ASN
1	C	470	ASN
1	C	562	HIS
1	C	576	GLN
1	C	587	HIS
1	C	588	ASN
1	D	470	ASN
1	D	562	HIS
1	D	576	GLN
1	D	587	HIS

5.3.3 RNA ⓘ

There are no RNA molecules in this entry.

5.4 Non-standard residues in protein, DNA, RNA chains [i](#)

There are no non-standard protein/DNA/RNA residues in this entry.

5.5 Carbohydrates [i](#)

There are no monosaccharides in this entry.

5.6 Ligand geometry [i](#)

Of 2 ligands modelled in this entry, 2 are monoatomic - leaving 0 for Mogul analysis.

There are no bond length outliers.

There are no bond angle outliers.

There are no chirality outliers.

There are no torsion outliers.

There are no ring outliers.

No monomer is involved in short contacts.

5.7 Other polymers [i](#)

There are no such residues in this entry.

5.8 Polymer linkage issues [i](#)

There are no chain breaks in this entry.

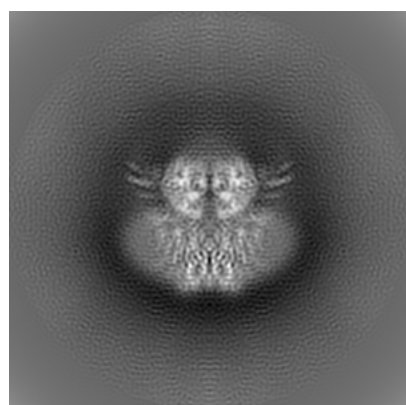
6 Map visualisation [i](#)

This section contains visualisations of the EMDB entry EMD-30412. These allow visual inspection of the internal detail of the map and identification of artifacts.

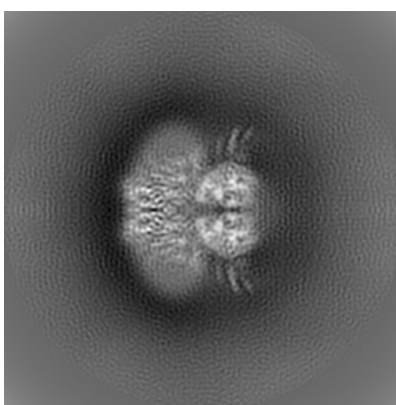
No raw map or half-maps were deposited for this entry and therefore no images, graphs, etc. pertaining to the raw map can be shown.

6.1 Orthogonal projections [i](#)

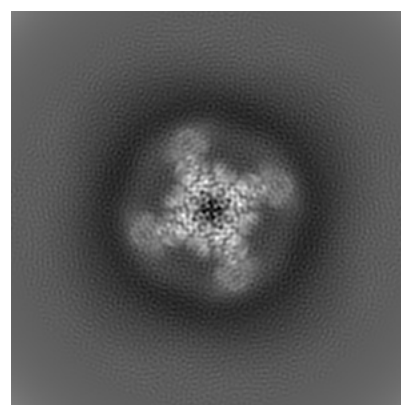
6.1.1 Primary map



X



Y

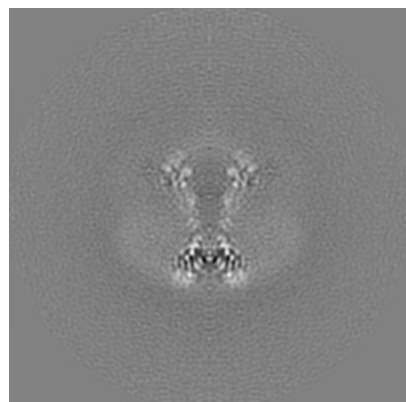


Z

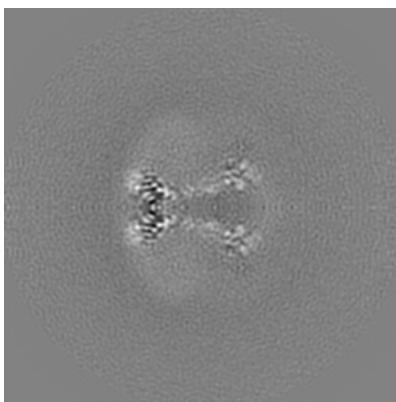
The images above show the map projected in three orthogonal directions.

6.2 Central slices [i](#)

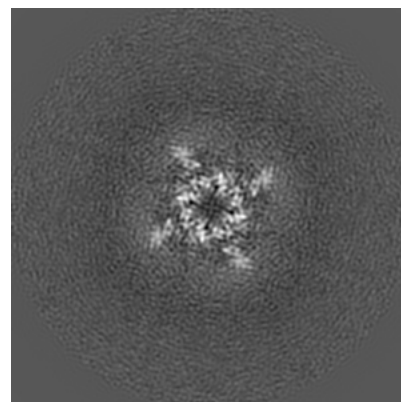
6.2.1 Primary map



X Index: 180



Y Index: 180

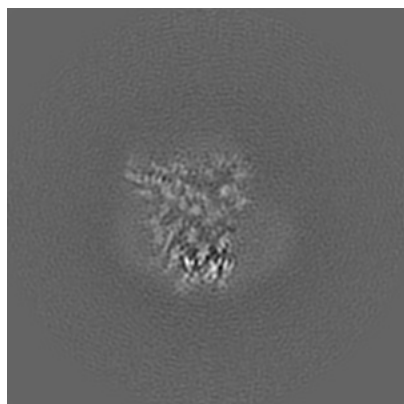


Z Index: 180

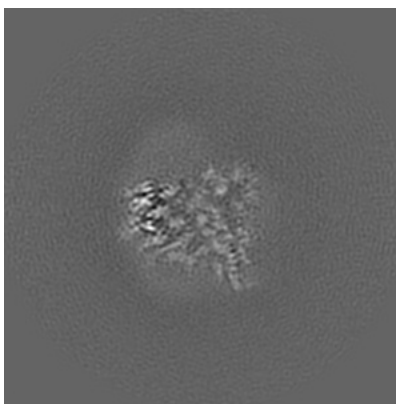
The images above show central slices of the map in three orthogonal directions.

6.3 Largest variance slices [i](#)

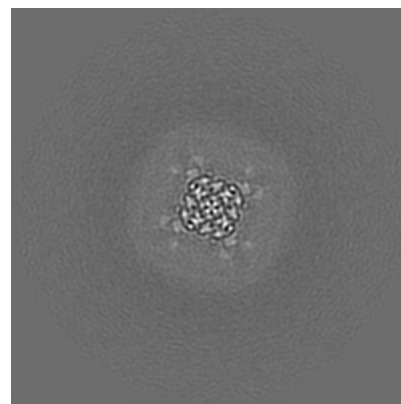
6.3.1 Primary map



X Index: 197



Y Index: 163

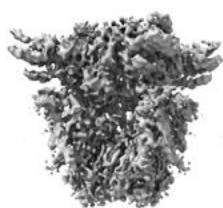


Z Index: 133

The images above show the largest variance slices of the map in three orthogonal directions.

6.4 Orthogonal surface views [i](#)

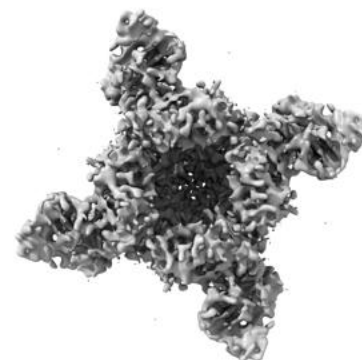
6.4.1 Primary map



X



Y



Z

The images above show the 3D surface view of the map at the recommended contour level 5.31. These images, in conjunction with the slice images, may facilitate assessment of whether an appropriate contour level has been provided.

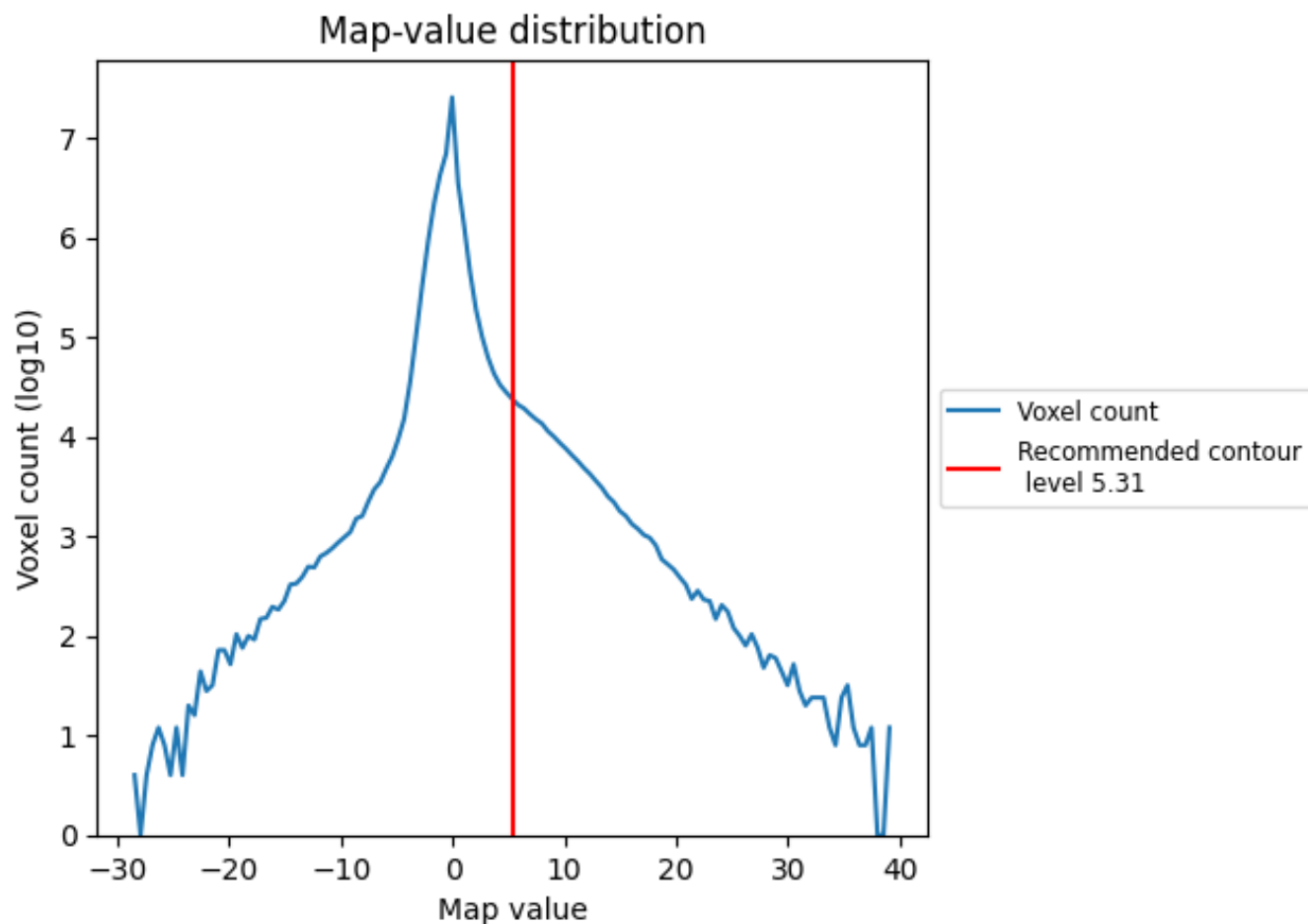
6.5 Mask visualisation

This section was not generated. No masks/segmentation were deposited.

7 Map analysis [i](#)

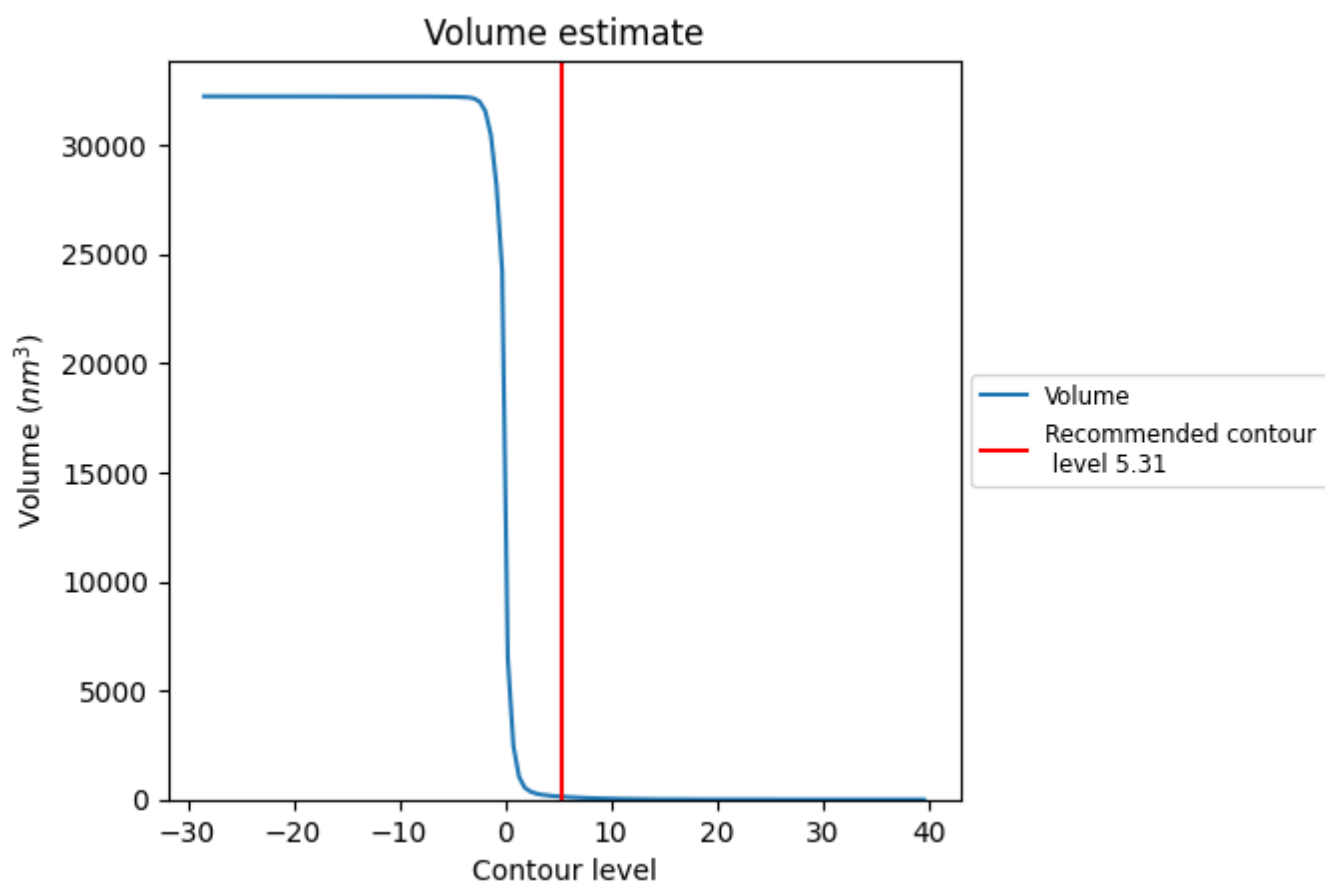
This section contains the results of statistical analysis of the map.

7.1 Map-value distribution [i](#)



The map-value distribution is plotted in 128 intervals along the x-axis. The y-axis is logarithmic. A spike in this graph at zero usually indicates that the volume has been masked.

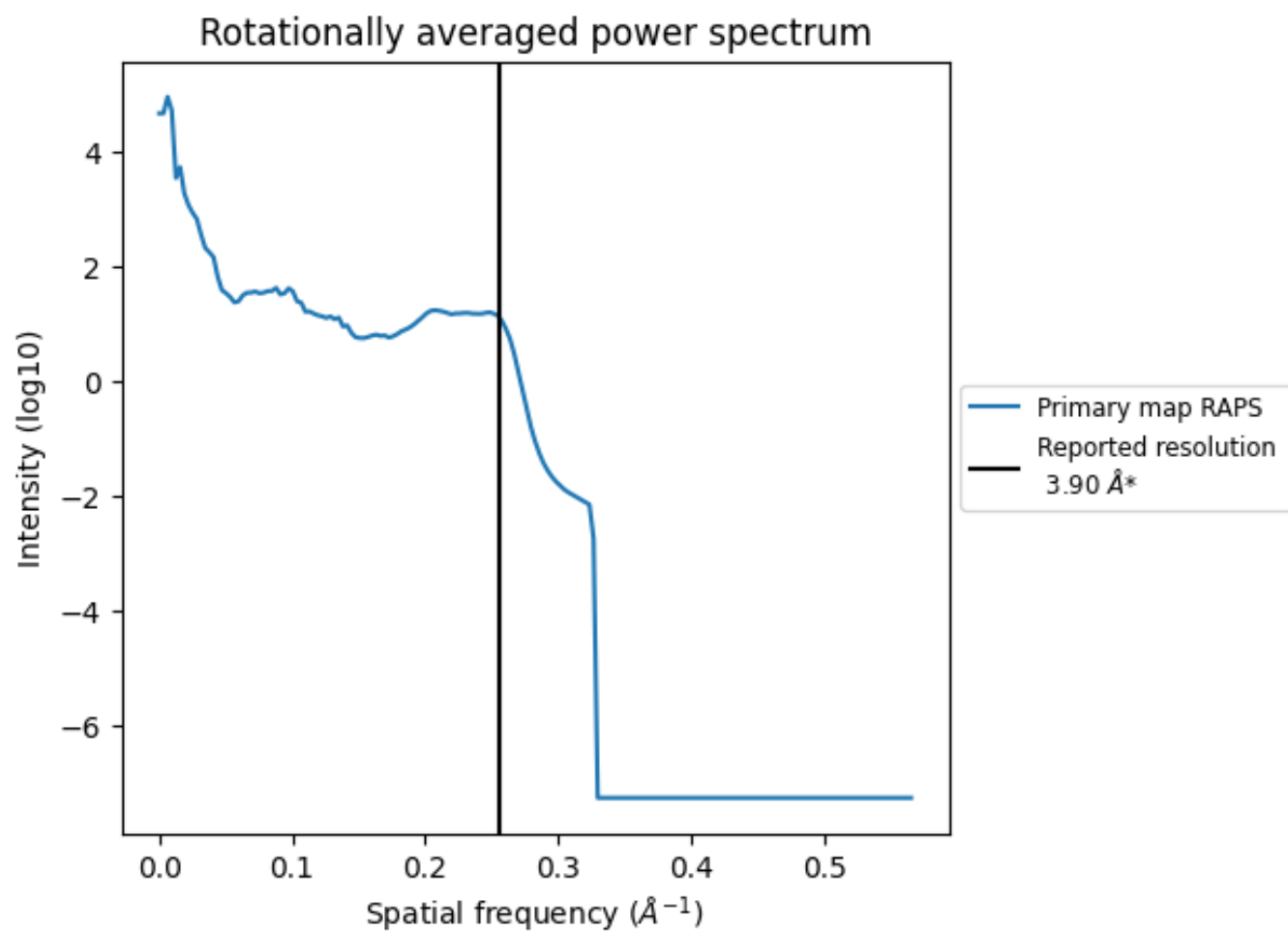
7.2 Volume estimate [i](#)



The volume at the recommended contour level is 135 nm³; this corresponds to an approximate mass of 122 kDa.

The volume estimate graph shows how the enclosed volume varies with the contour level. The recommended contour level is shown as a vertical line and the intersection between the line and the curve gives the volume of the enclosed surface at the given level.

7.3 Rotationally averaged power spectrum [i](#)

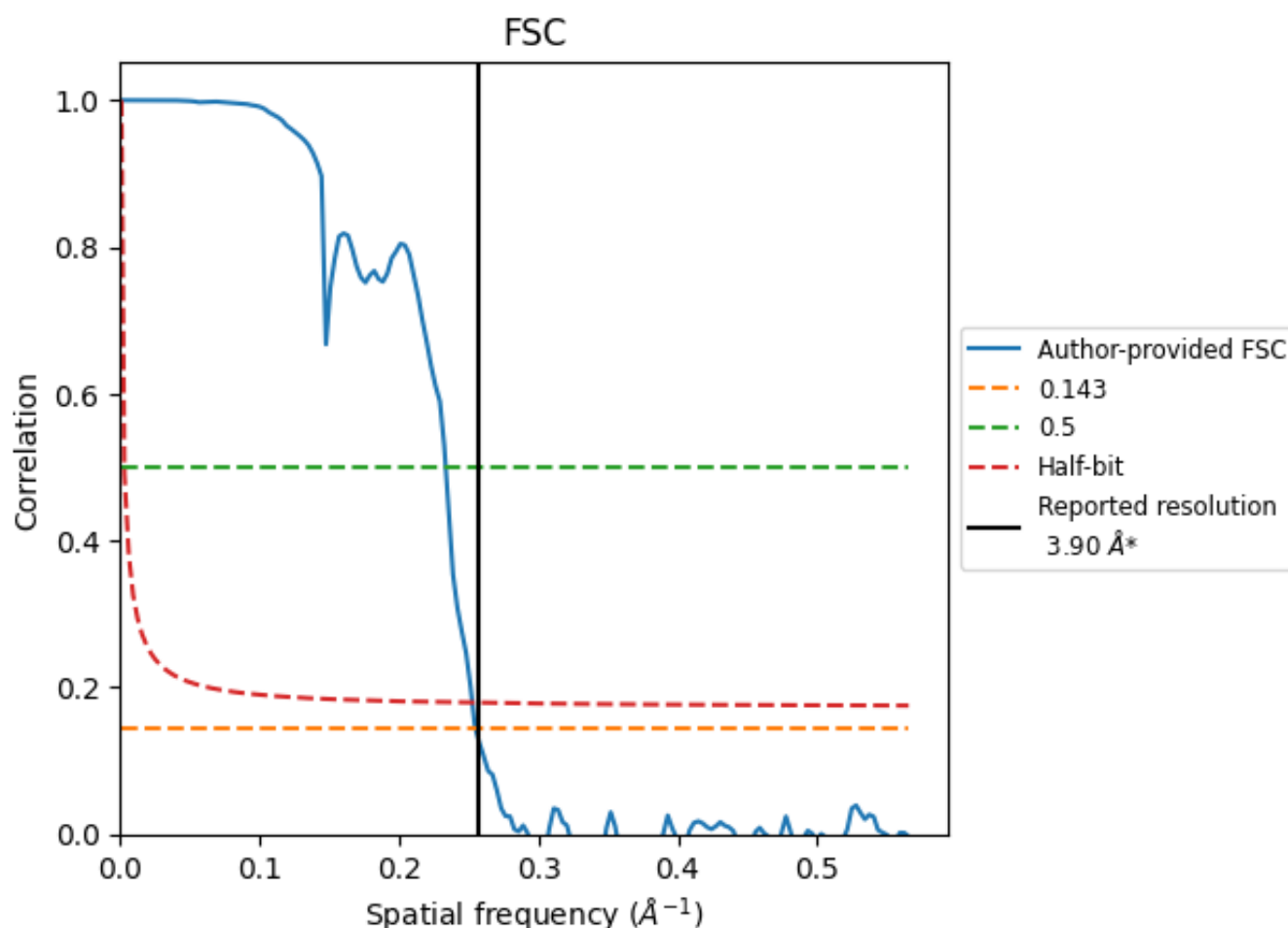


*Reported resolution corresponds to spatial frequency of 0.256 Å⁻¹

8 Fourier-Shell correlation [i](#)

Fourier-Shell Correlation (FSC) is the most commonly used method to estimate the resolution of single-particle and subtomogram-averaged maps. The shape of the curve depends on the imposed symmetry, mask and whether or not the two 3D reconstructions used were processed from a common reference. The reported resolution is shown as a black line. A curve is displayed for the half-bit criterion in addition to lines showing the 0.143 gold standard cut-off and 0.5 cut-off.

8.1 FSC [i](#)



*Reported resolution corresponds to spatial frequency of 0.256 Å⁻¹

8.2 Resolution estimates [i](#)

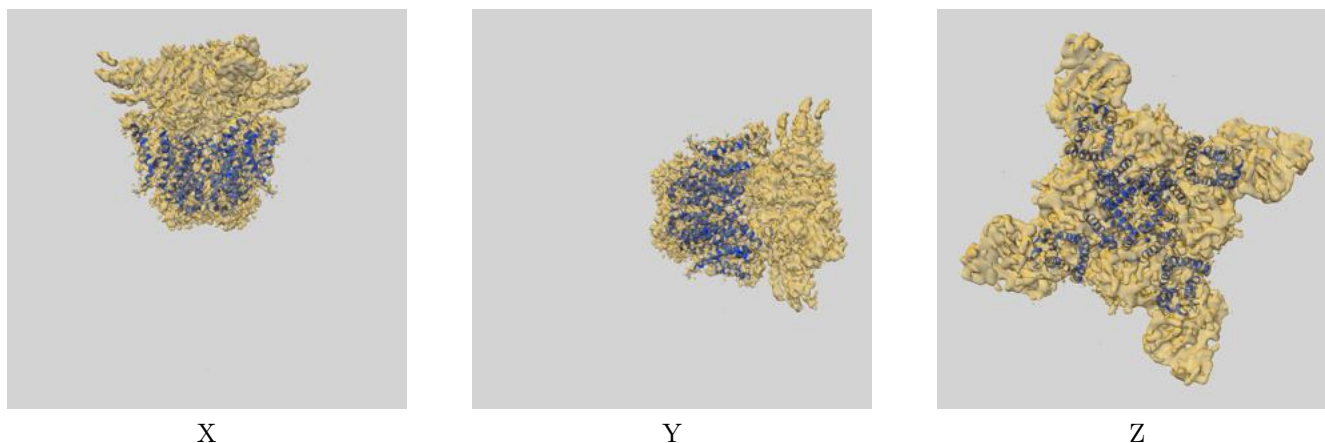
Resolution estimate (Å)	Estimation criterion (FSC cut-off)		
	0.143	0.5	Half-bit
Reported by author	3.90	-	-
Author-provided FSC curve	3.92	4.28	3.96
Unmasked-calculated*	-	-	-

*Resolution estimate based on FSC curve calculated by comparison of deposited half-maps.

9 Map-model fit [i](#)

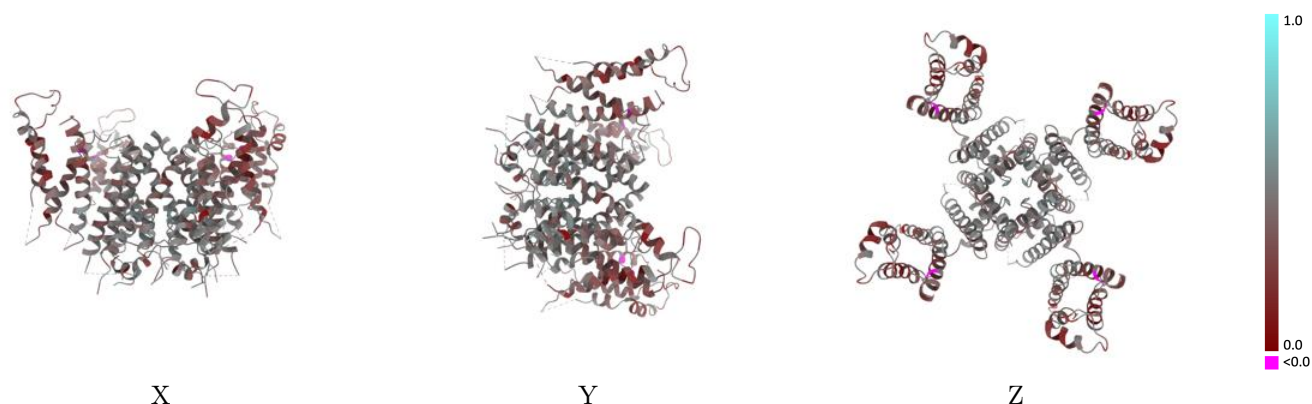
This section contains information regarding the fit between EMDB map EMD-30412 and PDB model 7CN0. Per-residue inclusion information can be found in section [3](#) on page [4](#).

9.1 Map-model overlay [i](#)



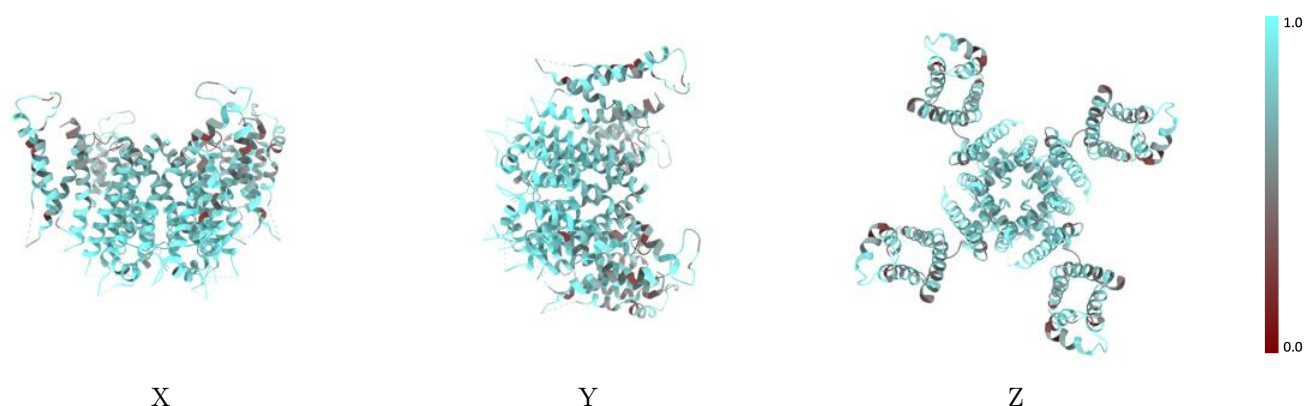
The images above show the 3D surface view of the map at the recommended contour level 5.31 at 50% transparency in yellow overlaid with a ribbon representation of the model coloured in blue. These images allow for the visual assessment of the quality of fit between the atomic model and the map.

9.2 Q-score mapped to coordinate model [i](#)



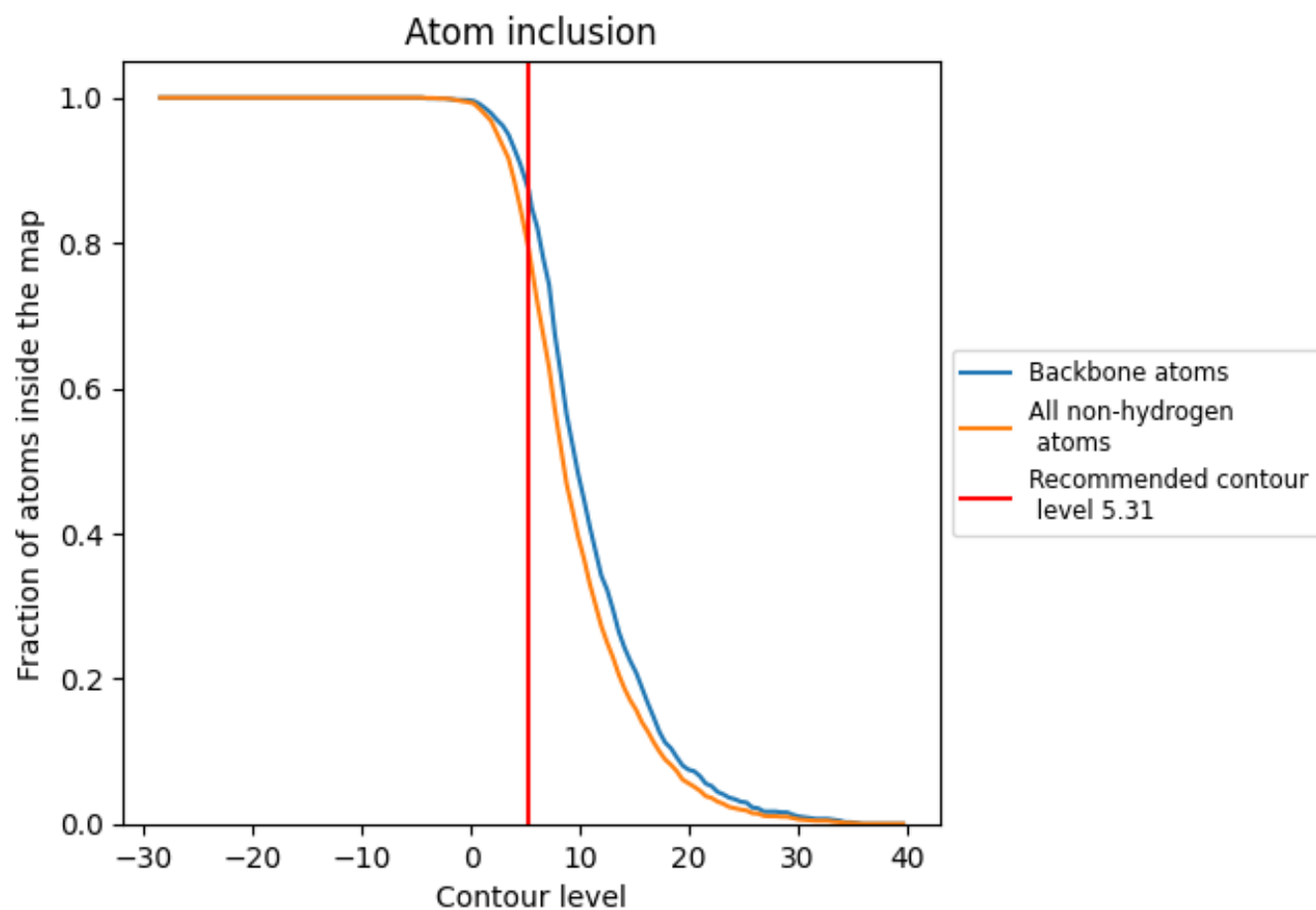
The images above show the model with each residue coloured according to its Q-score. This shows their resolvability in the map with higher Q-score values reflecting better resolvability. Please note: Q-score is calculating the resolvability of atoms, and thus high values are only expected at resolutions at which atoms can be resolved. Low Q-score values may therefore be expected for many entries.

9.3 Atom inclusion mapped to coordinate model [i](#)



The images above show the model with each residue coloured according to its atom inclusion. This shows to what extent they are inside the map at the recommended contour level (5.31).

9.4 Atom inclusion [i](#)



At the recommended contour level, 87% of all backbone atoms, 79% of all non-hydrogen atoms, are inside the map.

9.5 Map-model fit summary ⓘ

The table lists the average atom inclusion at the recommended contour level (5.31) and Q-score for the entire model and for each chain.

Chain	Atom inclusion	Q-score
All	<div></div> 0.7912	<div></div> 0.4060
A	<div></div> 0.7915	<div></div> 0.4060
B	<div></div> 0.7913	<div></div> 0.4060
C	<div></div> 0.7913	<div></div> 0.4080
D	<div></div> 0.7906	<div></div> 0.4050

