



Full wwPDB X-ray Structure Validation Report ⓘ

Aug 9, 2021 – 06:09 PM JST

PDB ID : 7CNA
Title : Crystal structure of Spindlin1/C11orf84 complex bound to histone H3K4me3K9me3 peptide
Authors : Qian, C.M.
Deposited on : 2020-07-30
Resolution : 1.60 Å(reported)

This is a Full wwPDB X-ray Structure Validation Report for a publicly released PDB entry.

We welcome your comments at validation@mail.wwpdb.org

A user guide is available at

<https://www.wwpdb.org/validation/2017/XrayValidationReportHelp>

with specific help available everywhere you see the ⓘ symbol.

The following versions of software and data (see [references ⓘ](#)) were used in the production of this report:

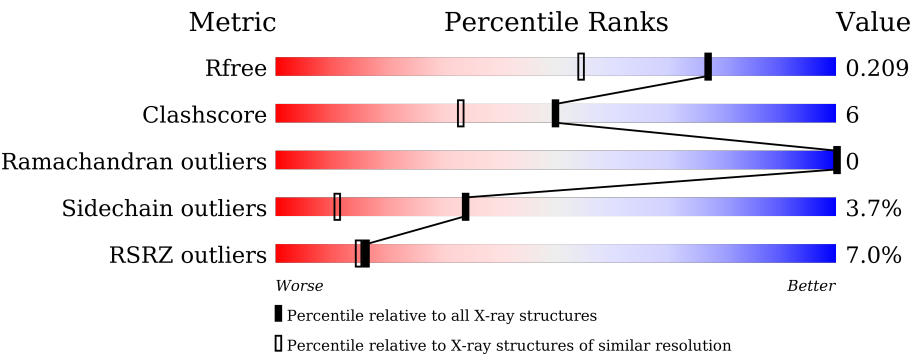
MolProbity	:	4.02b-467
Mogul	:	1.8.5 (274361), CSD as541be (2020)
Xtriage (Phenix)	:	1.13
EDS	:	2.23.1
Percentile statistics	:	20191225.v01 (using entries in the PDB archive December 25th 2019)
Refmac	:	5.8.0158
CCP4	:	7.0.044 (Gargrove)
Ideal geometry (proteins)	:	Engh & Huber (2001)
Ideal geometry (DNA, RNA)	:	Parkinson et al. (1996)
Validation Pipeline (wwPDB-VP)	:	2.23.1

1 Overall quality at a glance i

The following experimental techniques were used to determine the structure:
X-RAY DIFFRACTION

The reported resolution of this entry is 1.60 Å.

Percentile scores (ranging between 0-100) for global validation metrics of the entry are shown in the following graphic. The table shows the number of entries on which the scores are based.



Metric	Whole archive (#Entries)	Similar resolution (#Entries, resolution range(Å))
R_{free}	130704	3398 (1.60-1.60)
Clashscore	141614	3665 (1.60-1.60)
Ramachandran outliers	138981	3564 (1.60-1.60)
Sidechain outliers	138945	3563 (1.60-1.60)
RSRZ outliers	127900	3321 (1.60-1.60)

The table below summarises the geometric issues observed across the polymeric chains and their fit to the electron density. The red, orange, yellow and green segments of the lower bar indicate the fraction of residues that contain outliers for ≥ 3 , 2, 1 and 0 types of geometric quality criteria respectively. A grey segment represents the fraction of residues that are not modelled. The numeric value for each fraction is indicated below the corresponding segment, with a dot representing fractions $\leq 5\%$. The upper red bar (where present) indicates the fraction of residues that have poor fit to the electron density. The numeric value is given above the bar.

Mol	Chain	Length	Quality of chain
1	A	212	<div><div>5%</div><div>84%</div><div>11%</div><div>.</div><div>.</div></div>
1	D	212	<div><div>8%</div><div>83%</div><div>14%</div><div>.</div></div>
2	B	30	<div><div>13%</div><div>93%</div><div>.</div><div>.</div></div>
2	E	30	<div><div>83%</div><div>10%</div><div>.</div><div>.</div></div>
3	C	12	<div><div>17%</div><div>75%</div><div>17%</div><div>8%</div></div>
4	F	12	<div><div>17%</div><div>58%</div><div>33%</div><div>8%</div></div>

2 Entry composition

There are 8 unique types of molecules in this entry. The entry contains 4254 atoms, of which 0 are hydrogens and 0 are deuteriums.

In the tables below, the ZeroOcc column contains the number of atoms modelled with zero occupancy, the AltConf column contains the number of residues with at least one atom in alternate conformation and the Trace column contains the number of residues modelled with at most 2 atoms.

- Molecule 1 is a protein called Spindlin-1.

Mol	Chain	Residues	Atoms					ZeroOcc	AltConf	Trace
1	A	204	Total	C	N	O	S	0	3	0
			1646	1053	264	319	10			
1	D	206	Total	C	N	O	S	0	0	0
			1628	1042	261	316	9			

- Molecule 2 is a protein called Spindlin interactor and repressor of chromatin-binding protein.

Mol	Chain	Residues	Atoms				ZeroOcc	AltConf	Trace
2	B	30	Total	C	N	O	0	0	0
			227	149	38	40			
2	E	29	Total	C	N	O	0	0	0
			226	148	38	40			

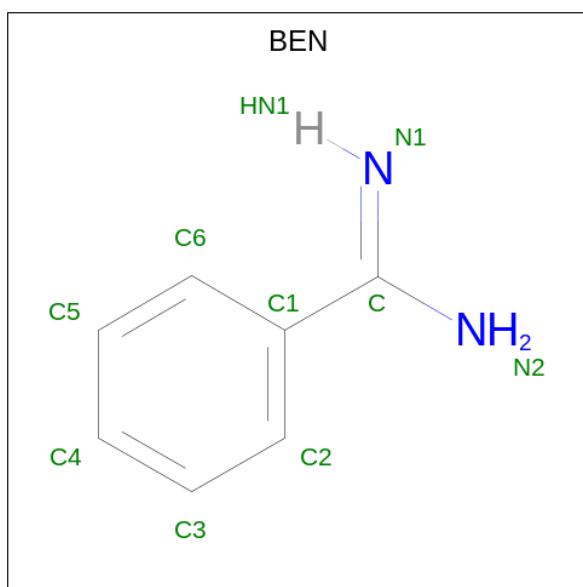
- Molecule 3 is a protein called ALA-ARG-THR-M3L-GLN-THR-ALA-ARG-M3L-SER-TH R.

Mol	Chain	Residues	Atoms				ZeroOcc	AltConf	Trace
3	C	11	Total	C	N	O	0	0	0
			92	56	20	16			

- Molecule 4 is a protein called ALA-ARG-THR-M3L-GLN-THR-ALA-ARG-M3L-SER-GLY.

Mol	Chain	Residues	Atoms				ZeroOcc	AltConf	Trace
4	F	11	Total	C	N	O	0	0	0
			89	54	20	15			

- Molecule 5 is BENZAMIDINE (three-letter code: BEN) (formula: C₇H₈N₂).



Mol	Chain	Residues	Atoms			ZeroOcc	AltConf
5	A	1	Total	C	N	0	0
			9	7	2		
5	A	1	Total	C	N	0	0
			9	7	2		
5	D	1	Total	C	N	0	0
			9	7	2		
5	D	1	Total	C	N	0	0
			9	7	2		
5	D	1	Total	C	N	0	0
			9	7	2		
5	C	1	Total	C	N	0	0
			9	7	2		

- Molecule 6 is CHLORIDE ION (three-letter code: CL) (formula: Cl).

Mol	Chain	Residues	Atoms		ZeroOcc	AltConf
6	A	1	Total	Cl	0	0
			1	1		
6	D	1	Total	Cl	0	0
			1	1		
6	E	1	Total	Cl	0	0
			1	1		

- Molecule 7 is GLYCEROL (three-letter code: GOL) (formula: C₃H₈O₃).



Mol	Chain	Residues	Atoms			ZeroOcc	AltConf
7	E	1	Total	C	O	0	0
			6	3	3		

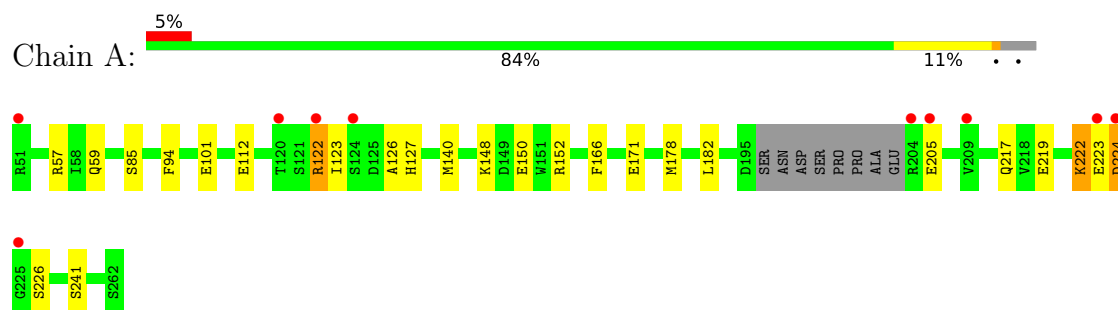
- Molecule 8 is water.

Mol	Chain	Residues	Atoms		ZeroOcc	AltConf
8	A	125	Total	O	0	0
			125	125		
8	B	20	Total	O	0	0
			20	20		
8	D	113	Total	O	0	0
			113	113		
8	E	17	Total	O	0	0
			17	17		
8	C	6	Total	O	0	0
			6	6		
8	F	2	Total	O	0	0
			2	2		

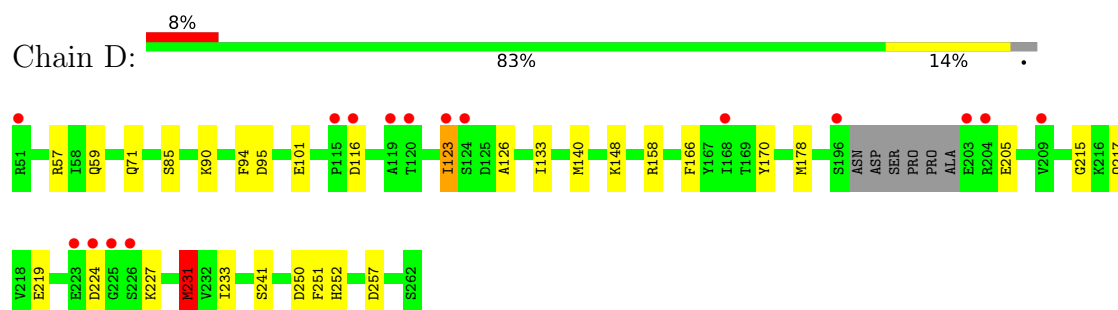
3 Residue-property plots [i](#)

These plots are drawn for all protein, RNA, DNA and oligosaccharide chains in the entry. The first graphic for a chain summarises the proportions of the various outlier classes displayed in the second graphic. The second graphic shows the sequence view annotated by issues in geometry and electron density. Residues are color-coded according to the number of geometric quality criteria for which they contain at least one outlier: green = 0, yellow = 1, orange = 2 and red = 3 or more. A red dot above a residue indicates a poor fit to the electron density ($RSRZ > 2$). Stretches of 2 or more consecutive residues without any outlier are shown as a green connector. Residues present in the sample, but not in the model, are shown in grey.

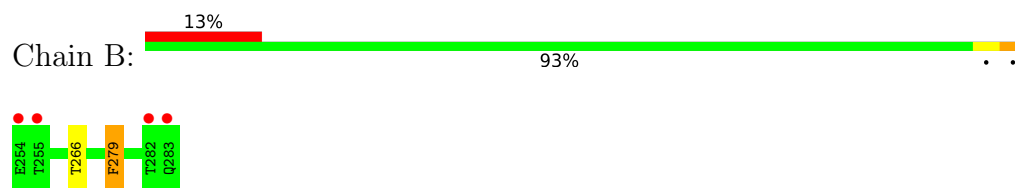
- Molecule 1: Spindlin-1



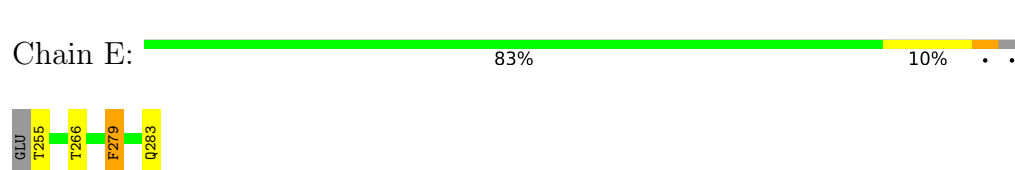
- Molecule 1: Spindlin-1



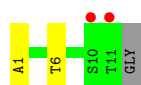
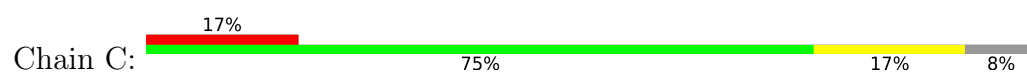
- Molecule 2: Spindlin interactor and repressor of chromatin-binding protein



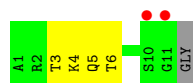
- Molecule 2: Spindlin interactor and repressor of chromatin-binding protein



- Molecule 3: ALA-ARG-THR-M3L-GLN-THR-ALA-ARG-M3L-SER-THR



• Molecule 4: ALA-ARG-THR-M3L-GLN-THR-ALA-ARG-M3L-SER-GLY



4 Data and refinement statistics

Property	Value	Source
Space group	P 1 21 1	Depositor
Cell constants a, b, c, α , β , γ	45.60Å 101.18Å 56.62Å 90.00° 91.41° 90.00°	Depositor
Resolution (Å)	35.11 – 1.60 35.08 – 1.60	Depositor EDS
% Data completeness (in resolution range)	98.6 (35.11-1.60) 98.6 (35.08-1.60)	Depositor EDS
R_{merge}	0.03	Depositor
R_{sym}	(Not available)	Depositor
$\langle I/\sigma(I) \rangle$ ¹	6.40 (at 1.60Å)	Xtriage
Refinement program	REFMAC 5.8.0258	Depositor
R, R_{free}	0.172 , 0.201 0.184 , 0.209	Depositor DCC
R_{free} test set	2002 reflections (3.00%)	wwPDB-VP
Wilson B-factor (Å ²)	17.7	Xtriage
Anisotropy	0.023	Xtriage
Bulk solvent k_{sol} (e/Å ³), B_{sol} (Å ²)	0.36 , 45.8	EDS
L-test for twinning ²	$\langle L \rangle = 0.50$, $\langle L^2 \rangle = 0.33$	Xtriage
Estimated twinning fraction	0.076 for h,-k,-l	Xtriage
F_o, F_c correlation	0.96	EDS
Total number of atoms	4254	wwPDB-VP
Average B, all atoms (Å ²)	22.0	wwPDB-VP

Xtriage's analysis on translational NCS is as follows: *The largest off-origin peak in the Patterson function is 6.09% of the height of the origin peak. No significant pseudotranslation is detected.*

¹Intensities estimated from amplitudes.

²Theoretical values of $\langle |L| \rangle$, $\langle L^2 \rangle$ for acentric reflections are 0.5, 0.333 respectively for untwinned datasets, and 0.375, 0.2 for perfectly twinned datasets.

5 Model quality [i](#)

5.1 Standard geometry [i](#)

Bond lengths and bond angles in the following residue types are not validated in this section: CL, BEN, M3L, GOL

The Z score for a bond length (or angle) is the number of standard deviations the observed value is removed from the expected value. A bond length (or angle) with $|Z| > 5$ is considered an outlier worth inspection. RMSZ is the root-mean-square of all Z scores of the bond lengths (or angles).

Mol	Chain	Bond lengths		Bond angles	
		RMSZ	$\# Z > 5$	RMSZ	$\# Z > 5$
1	A	0.77	0/1693	0.92	1/2294 (0.0%)
1	D	0.76	0/1666	0.96	2/2261 (0.1%)
2	B	0.75	0/235	0.93	0/320
2	E	0.76	0/234	0.90	0/318
3	C	0.73	0/67	1.12	0/89
4	F	0.75	0/64	0.81	0/84
All	All	0.76	0/3959	0.94	3/5366 (0.1%)

There are no bond length outliers.

All (3) bond angle outliers are listed below:

Mol	Chain	Res	Type	Atoms	Z	Observed(°)	Ideal(°)
1	D	231	MET	CG-SD-CE	-12.71	79.87	100.20
1	D	57	ARG	NE-CZ-NH2	-6.56	117.02	120.30
1	A	57	ARG	NE-CZ-NH2	-5.80	117.40	120.30

There are no chirality outliers.

There are no planarity outliers.

5.2 Too-close contacts [i](#)

In the following table, the Non-H and H(model) columns list the number of non-hydrogen atoms and hydrogen atoms in the chain respectively. The H(added) column lists the number of hydrogen atoms added and optimized by MolProbity. The Clashes column lists the number of clashes within the asymmetric unit, whereas Symm-Clashes lists symmetry-related clashes.

Mol	Chain	Non-H	H(model)	H(added)	Clashes	Symm-Clashes
1	A	1646	0	1585	21	0
1	D	1628	0	1546	16	0

Continued on next page...

Continued from previous page...

Mol	Chain	Non-H	H(model)	H(added)	Clashes	Symm-Clashes
2	B	227	0	204	4	0
2	E	226	0	208	4	0
3	C	92	0	110	3	0
4	F	89	0	106	4	0
5	A	18	0	14	2	0
5	C	9	0	7	0	0
5	D	27	0	21	0	0
6	A	1	0	0	0	0
6	D	1	0	0	0	0
6	E	1	0	0	0	0
7	E	6	0	8	3	0
8	A	125	0	0	4	0
8	B	20	0	0	0	0
8	C	6	0	0	0	0
8	D	113	0	0	0	0
8	E	17	0	0	0	0
8	F	2	0	0	0	0
All	All	4254	0	3809	45	0

The all-atom clashscore is defined as the number of clashes found per 1000 atoms (including hydrogen atoms). The all-atom clashscore for this structure is 6.

All (45) close contacts within the same asymmetric unit are listed below, sorted by their clash magnitude.

Atom-1	Atom-2	Interatomic distance (Å)	Clash overlap (Å)
1:A:59[B]:GLN:HE21	1:A:112:GLU:CD	1.69	0.95
1:A:140[B]:MET:SD	1:A:148:LYS:HB3	2.05	0.95
4:F:3:THR:HG22	4:F:5:GLN:H	1.38	0.88
1:A:219:GLU:OE1	2:B:266:THR:HG22	1.76	0.84
1:A:122:ARG:HA	1:A:122:ARG:HE	1.47	0.78
1:A:217:GLN:OE1	2:B:266:THR:HG21	1.83	0.77
5:A:302:BEN:H2	2:B:279:PHE:CE2	2.22	0.75
1:D:217:GLN:OE1	2:E:266:THR:HG21	1.94	0.68
1:A:152:ARG:NE	1:A:171[A]:GLU:OE2	2.29	0.66
1:D:219:GLU:HG3	2:E:266:THR:HG22	1.80	0.63
1:A:122:ARG:HA	1:A:122:ARG:NE	2.16	0.57
5:A:302:BEN:C2	2:B:279:PHE:CE2	2.87	0.57
1:A:140[B]:MET:CG	1:A:148:LYS:HB3	2.34	0.56
1:A:222:LYS:H	1:A:222:LYS:CD	2.17	0.56
2:E:279:PHE:CZ	7:E:301:GOL:H12	2.40	0.56
1:D:123:ILE:HD12	1:D:126:ALA:HA	1.88	0.56

Continued on next page...

Continued from previous page...

Atom-1	Atom-2	Interatomic distance (Å)	Clash overlap (Å)
1:D:133:ILE:HD11	1:D:158:ARG:HG2	1.90	0.54
1:D:215:GLY:O	1:D:231:MET:HE1	2.09	0.53
1:D:166:PHE:O	1:D:178:MET:HA	2.10	0.52
1:D:250:ASP:OD2	1:D:252:HIS:HD2	1.93	0.51
2:E:279:PHE:CE1	7:E:301:GOL:H12	2.46	0.51
1:A:205:GLU:HG3	1:A:241:SER:OG	2.13	0.49
1:A:140[B]:MET:CE	1:A:150:GLU:HG3	2.43	0.48
1:D:59:GLN:OE1	1:D:71:GLN:NE2	2.46	0.48
8:A:414:HOH:O	3:C:1:ALA:HB2	2.14	0.48
1:D:205:GLU:HG3	1:D:241:SER:OG	2.14	0.48
1:A:127:HIS:HD2	8:A:511:HOH:O	1.97	0.48
1:D:257:ASP:OD1	7:E:301:GOL:H32	2.14	0.48
1:A:166:PHE:O	1:A:178:MET:HA	2.14	0.47
1:D:231:MET:HG2	1:D:233:ILE:HG22	1.97	0.47
1:D:90:LYS:HE2	1:D:95:ASP:HA	1.97	0.46
1:A:59[B]:GLN:HG3	1:A:112:GLU:HG2	1.99	0.45
1:D:140:MET:SD	1:D:148:LYS:HB2	2.58	0.44
1:A:205:GLU:HG3	1:A:241:SER:HG	1.84	0.43
1:D:170:TYR:CE2	4:F:4:M3L:HM31	2.53	0.43
1:A:85:SER:O	1:A:101:GLU:HA	2.19	0.42
1:A:123:ILE:HG21	1:A:126:ALA:HA	2.01	0.42
1:A:123:ILE:HD12	1:A:182:LEU:HD11	2.00	0.42
4:F:3:THR:HG22	4:F:5:GLN:N	2.20	0.42
8:A:414:HOH:O	3:C:1:ALA:CB	2.68	0.42
1:A:224:ASP:OD1	1:A:224:ASP:C	2.59	0.41
1:D:94:PHE:HA	4:F:6:THR:O	2.20	0.41
1:A:94:PHE:HA	3:C:6:THR:O	2.20	0.41
1:D:85:SER:O	1:D:101:GLU:HA	2.21	0.41
1:A:127:HIS:CD2	8:A:511:HOH:O	2.73	0.40

There are no symmetry-related clashes.

5.3 Torsion angles ⓘ

5.3.1 Protein backbone ⓘ

In the following table, the Percentiles column shows the percent Ramachandran outliers of the chain as a percentile score with respect to all X-ray entries followed by that with respect to entries of similar resolution.

The Analysed column shows the number of residues for which the backbone conformation was analysed, and the total number of residues.

Mol	Chain	Analysed	Favoured	Allowed	Outliers	Percentiles	
1	A	203/212 (96%)	201 (99%)	2 (1%)	0	100	100
1	D	202/212 (95%)	199 (98%)	3 (2%)	0	100	100
2	B	28/30 (93%)	27 (96%)	1 (4%)	0	100	100
2	E	27/30 (90%)	26 (96%)	1 (4%)	0	100	100
3	C	7/12 (58%)	7 (100%)	0	0	100	100
4	F	7/12 (58%)	7 (100%)	0	0	100	100
All	All	474/508 (93%)	467 (98%)	7 (2%)	0	100	100

There are no Ramachandran outliers to report.

5.3.2 Protein sidechains ⓘ

In the following table, the Percentiles column shows the percent sidechain outliers of the chain as a percentile score with respect to all X-ray entries followed by that with respect to entries of similar resolution.

The Analysed column shows the number of residues for which the sidechain conformation was analysed, and the total number of residues.

Mol	Chain	Analysed	Rotameric	Outliers	Percentiles	
1	A	179/187 (96%)	174 (97%)	5 (3%)	43	18
1	D	173/187 (92%)	167 (96%)	6 (4%)	36	13
2	B	22/24 (92%)	21 (96%)	1 (4%)	27	8
2	E	23/24 (96%)	20 (87%)	3 (13%)	4	0
3	C	7/7 (100%)	7 (100%)	0	100	100
4	F	6/6 (100%)	6 (100%)	0	100	100
All	All	410/435 (94%)	395 (96%)	15 (4%)	34	11

All (15) residues with a non-rotameric sidechain are listed below:

Mol	Chain	Res	Type
1	A	122	ARG
1	A	222	LYS
1	A	223	GLU
1	A	224	ASP
1	A	226	SER
2	B	279	PHE
1	D	116	ASP

Continued on next page...

Continued from previous page...

Mol	Chain	Res	Type
1	D	123	ILE
1	D	224	ASP
1	D	227	LYS
1	D	231	MET
1	D	251	PHE
2	E	255	THR
2	E	279	PHE
2	E	283	GLN

Sometimes sidechains can be flipped to improve hydrogen bonding and reduce clashes. All (6) such sidechains are listed below:

Mol	Chain	Res	Type
1	A	71	GLN
1	A	127	HIS
1	A	180	GLN
1	D	71	GLN
1	D	252	HIS
2	E	283	GLN

5.3.3 RNA [i](#)

There are no RNA molecules in this entry.

5.4 Non-standard residues in protein, DNA, RNA chains [i](#)

4 non-standard protein/DNA/RNA residues are modelled in this entry.

In the following table, the Counts columns list the number of bonds (or angles) for which Mogul statistics could be retrieved, the number of bonds (or angles) that are observed in the model and the number of bonds (or angles) that are defined in the Chemical Component Dictionary. The Link column lists molecule types, if any, to which the group is linked. The Z score for a bond length (or angle) is the number of standard deviations the observed value is removed from the expected value. A bond length (or angle) with $|Z| > 2$ is considered an outlier worth inspection. RMSZ is the root-mean-square of all Z scores of the bond lengths (or angles).

Mol	Type	Chain	Res	Link	Bond lengths			Bond angles		
					Counts	RMSZ	$\# Z > 2$	Counts	RMSZ	$\# Z > 2$
4	M3L	F	4	4	10,11,12	0.38	0	9,14,16	0.79	0
3	M3L	C	9	3	10,11,12	0.59	0	9,14,16	0.40	0
3	M3L	C	4	3	10,11,12	0.61	0	9,14,16	0.84	0
4	M3L	F	9	4	10,11,12	0.53	0	9,14,16	0.26	0

In the following table, the Chirals column lists the number of chiral outliers, the number of chiral centers analysed, the number of these observed in the model and the number defined in the Chemical Component Dictionary. Similar counts are reported in the Torsion and Rings columns. '-' means no outliers of that kind were identified.

Mol	Type	Chain	Res	Link	Chirals	Torsions	Rings
4	M3L	F	4	4	-	4/9/10/12	-
3	M3L	C	9	3	-	0/9/10/12	-
3	M3L	C	4	3	-	0/9/10/12	-
4	M3L	F	9	4	-	0/9/10/12	-

There are no bond length outliers.

There are no bond angle outliers.

There are no chirality outliers.

All (4) torsion outliers are listed below:

Mol	Chain	Res	Type	Atoms
4	F	4	M3L	CD-CE-NZ-CM3
4	F	4	M3L	CD-CE-NZ-CM2
4	F	4	M3L	CD-CE-NZ-CM1
4	F	4	M3L	CE-CD-CG-CB

There are no ring outliers.

1 monomer is involved in 1 short contact:

Mol	Chain	Res	Type	Clashes	Symm-Clashes
4	F	4	M3L	1	0

5.5 Carbohydrates [i](#)

There are no monosaccharides in this entry.

5.6 Ligand geometry [i](#)

Of 10 ligands modelled in this entry, 3 are monoatomic - leaving 7 for Mogul analysis.

In the following table, the Counts columns list the number of bonds (or angles) for which Mogul statistics could be retrieved, the number of bonds (or angles) that are observed in the model and the number of bonds (or angles) that are defined in the Chemical Component Dictionary. The Link column lists molecule types, if any, to which the group is linked. The Z score for a bond length (or angle) is the number of standard deviations the observed value is removed from the

expected value. A bond length (or angle) with $|Z| > 2$ is considered an outlier worth inspection. RMSZ is the root-mean-square of all Z scores of the bond lengths (or angles).

Mol	Type	Chain	Res	Link	Bond lengths			Bond angles		
					Counts	RMSZ	$\# Z > 2$	Counts	RMSZ	$\# Z > 2$
5	BEN	A	301	-	9,9,9	0.45	0	7,11,11	0.44	0
5	BEN	A	302	-	9,9,9	0.85	0	7,11,11	0.33	0
7	GOL	E	301	-	5,5,5	0.07	0	5,5,5	0.39	0
5	BEN	D	303	-	9,9,9	0.66	0	7,11,11	0.77	0
5	BEN	C	101	-	9,9,9	0.44	0	7,11,11	0.54	0
5	BEN	D	302	-	9,9,9	0.53	0	7,11,11	0.57	0
5	BEN	D	301	-	9,9,9	0.54	0	7,11,11	0.62	0

In the following table, the Chirals column lists the number of chiral outliers, the number of chiral centers analysed, the number of these observed in the model and the number defined in the Chemical Component Dictionary. Similar counts are reported in the Torsion and Rings columns. '-' means no outliers of that kind were identified.

Mol	Type	Chain	Res	Link	Chirals	Torsions	Rings
5	BEN	A	301	-	-	0/4/4/4	0/1/1/1
5	BEN	A	302	-	-	0/4/4/4	0/1/1/1
7	GOL	E	301	-	-	4/4/4/4	-
5	BEN	D	303	-	-	0/4/4/4	0/1/1/1
5	BEN	C	101	-	-	0/4/4/4	0/1/1/1
5	BEN	D	302	-	-	0/4/4/4	0/1/1/1
5	BEN	D	301	-	-	0/4/4/4	0/1/1/1

There are no bond length outliers.

There are no bond angle outliers.

There are no chirality outliers.

All (4) torsion outliers are listed below:

Mol	Chain	Res	Type	Atoms
7	E	301	GOL	O1-C1-C2-C3
7	E	301	GOL	C1-C2-C3-O3
7	E	301	GOL	O1-C1-C2-O2
7	E	301	GOL	O2-C2-C3-O3

There are no ring outliers.

2 monomers are involved in 5 short contacts:

Mol	Chain	Res	Type	Clashes	Symm-Clashes
5	A	302	BEN	2	0
7	E	301	GOL	3	0

5.7 Other polymers [i](#)

There are no such residues in this entry.

5.8 Polymer linkage issues [i](#)

There are no chain breaks in this entry.

6 Fit of model and data

6.1 Protein, DNA and RNA chains

In the following table, the column labelled ‘#RSRZ > 2’ contains the number (and percentage) of RSRZ outliers, followed by percent RSRZ outliers for the chain as percentile scores relative to all X-ray entries and entries of similar resolution. The OWAB column contains the minimum, median, 95th percentile and maximum values of the occupancy-weighted average B-factor per residue. The column labelled ‘Q < 0.9’ lists the number of (and percentage) of residues with an average occupancy less than 0.9.

Mol	Chain	Analysed	<RSRZ>	#RSRZ>2	OWAB(Å ²)	Q<0.9
1	A	204/212 (96%)	0.03	10 (4%) 29 27	11, 18, 40, 59	0
1	D	206/212 (97%)	0.32	16 (7%) 13 11	11, 19, 42, 66	2 (0%)
2	B	30/30 (100%)	0.17	4 (13%) 3 2	13, 18, 45, 56	0
2	E	29/30 (96%)	-0.21	0 100 100	12, 15, 31, 53	0
3	C	9/12 (75%)	1.11	2 (22%) 0 0	19, 22, 52, 68	0
4	F	9/12 (75%)	1.06	2 (22%) 0 0	22, 25, 53, 61	0
All	All	487/508 (95%)	0.18	34 (6%) 16 15	11, 19, 43, 68	2 (0%)

All (34) RSRZ outliers are listed below:

Mol	Chain	Res	Type	RSRZ
3	C	11	THR	4.6
4	F	10	SER	4.2
3	C	10	SER	4.2
1	D	223	GLU	3.8
1	D	115	PRO	3.8
1	D	209	VAL	3.6
2	B	255	THR	3.6
1	D	224	ASP	3.6
2	B	282	THR	3.6
1	D	225	GLY	3.5
1	D	120	THR	3.5
1	D	203	GLU	3.3
1	A	224	ASP	3.1
1	D	204	ARG	3.1
1	A	223	GLU	3.0
1	D	196	SER	3.0
2	B	283	GLN	3.0
1	D	123	ILE	2.9
4	F	11	GLY	2.9

Continued on next page...

Continued from previous page...

Mol	Chain	Res	Type	RSRZ
1	A	209	VAL	2.9
1	A	51	ARG	2.7
1	D	51	ARG	2.7
1	A	124	SER	2.6
1	D	226	SER	2.6
1	A	122	ARG	2.5
1	D	116	ASP	2.5
1	A	205	GLU	2.5
1	A	225	GLY	2.5
1	D	124	SER	2.4
1	D	119	ALA	2.3
2	B	254	GLU	2.2
1	D	168	ILE	2.2
1	A	120	THR	2.2
1	A	204	ARG	2.1

6.2 Non-standard residues in protein, DNA, RNA chains [i](#)

In the following table, the Atoms column lists the number of modelled atoms in the group and the number defined in the chemical component dictionary. The B-factors column lists the minimum, median, 95th percentile and maximum values of B factors of atoms in the group. The column labelled 'Q< 0.9' lists the number of atoms with occupancy less than 0.9.

Mol	Type	Chain	Res	Atoms	RSCC	RSR	B-factors(Å ²)	Q<0.9
4	M3L	F	9	12/13	0.82	0.14	24,31,34,34	0
3	M3L	C	9	12/13	0.83	0.13	22,29,31,32	0
4	M3L	F	4	12/13	0.86	0.13	17,22,27,28	0
3	M3L	C	4	12/13	0.92	0.10	14,17,18,20	0

6.3 Carbohydrates [i](#)

There are no monosaccharides in this entry.

6.4 Ligands [i](#)

In the following table, the Atoms column lists the number of modelled atoms in the group and the number defined in the chemical component dictionary. The B-factors column lists the minimum, median, 95th percentile and maximum values of B factors of atoms in the group. The column labelled 'Q< 0.9' lists the number of atoms with occupancy less than 0.9.

Mol	Type	Chain	Res	Atoms	RSCC	RSR	B-factors(\AA^2)	Q<0.9
5	BEN	D	303	9/9	0.76	0.18	29,36,40,41	0
5	BEN	A	302	9/9	0.81	0.21	22,33,37,37	0
5	BEN	D	301	9/9	0.85	0.15	27,29,30,34	0
7	GOL	E	301	6/6	0.86	0.24	38,39,45,51	0
5	BEN	D	302	9/9	0.87	0.15	25,27,27,27	0
5	BEN	C	101	9/9	0.90	0.10	22,23,26,26	0
5	BEN	A	301	9/9	0.94	0.12	25,26,27,28	0
6	CL	E	302	1/1	0.99	0.07	15,15,15,15	0
6	CL	A	303	1/1	1.00	0.05	18,18,18,18	0
6	CL	D	304	1/1	1.00	0.10	18,18,18,18	0

6.5 Other polymers [i](#)

There are no such residues in this entry.