



Full wwPDB X-ray Structure Validation Report ⓘ

Aug 9, 2020 – 04:30 AM BST

PDB ID : 5CPZ
Title : Crystal structure of murine polyomavirus RA strain VP1 in complex with the GT1a glycan
Authors : Buch, M.H.C.; Liaci, A.M.; Neu, U.; Stehle, T.
Deposited on : 2015-07-21
Resolution : 1.71 Å(reported)

This is a Full wwPDB X-ray Structure Validation Report for a publicly released PDB entry.

We welcome your comments at validation@mail.wwpdb.org

A user guide is available at

<https://www.wwpdb.org/validation/2017/XrayValidationReportHelp>

with specific help available everywhere you see the ⓘ symbol.

The following versions of software and data (see [references ⓘ](#)) were used in the production of this report:

MolProbity : 4.02b-467
Mogul : 1.8.5 (274361), CSD as541be (2020)
Xtriage (Phenix) : 1.13
EDS : 2.13.1
Percentile statistics : 20191225.v01 (using entries in the PDB archive December 25th 2019)
Refmac : 5.8.0158
CCP4 : 7.0.044 (Gargrove)
Ideal geometry (proteins) : Engh & Huber (2001)
Ideal geometry (DNA, RNA) : Parkinson et al. (1996)
Validation Pipeline (wwPDB-VP) : 2.13.1

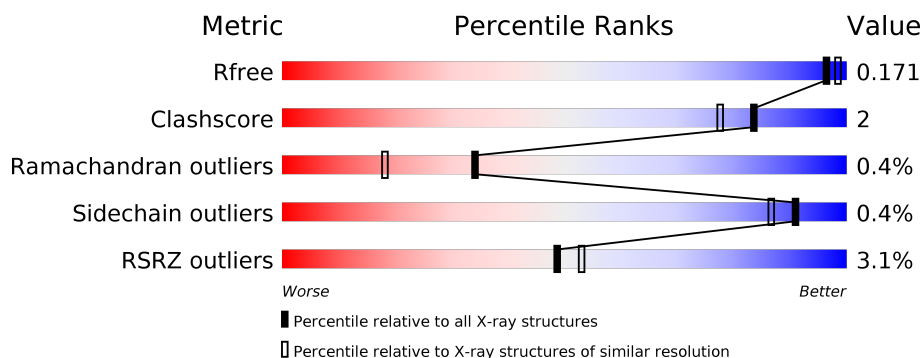
1 Overall quality at a glance

The following experimental techniques were used to determine the structure:

X-RAY DIFFRACTION

The reported resolution of this entry is 1.71 Å.

Percentile scores (ranging between 0-100) for global validation metrics of the entry are shown in the following graphic. The table shows the number of entries on which the scores are based.





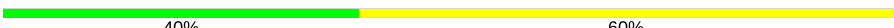
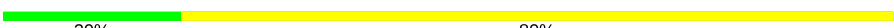
Metric	Whole archive (#Entries)	Similar resolution (#Entries, resolution range(Å))
R_{free}	130704	5722 (1.74-1.70)
Clashscore	141614	6152 (1.74-1.70)
Ramachandran outliers	138981	6051 (1.74-1.70)
Sidechain outliers	138945	6051 (1.74-1.70)
RSRZ outliers	127900	5629 (1.74-1.70)

The table below summarises the geometric issues observed across the polymeric chains and their fit to the electron density. The red, orange, yellow and green segments on the lower bar indicate the fraction of residues that contain outliers for ≥ 3 , 2, 1 and 0 types of geometric quality criteria respectively. A grey segment represents the fraction of residues that are not modelled. The numeric value for each fraction is indicated below the corresponding segment, with a dot representing fractions $\leq 5\%$. The upper red bar (where present) indicates the fraction of residues that have poor fit to the electron density. The numeric value is given above the bar.

Mol	Chain	Length	Quality of chain
1	A	284	<div> <div>3%</div> <div>94%</div> <div>5%</div> <div>• •</div> </div>
1	B	284	<div> <div>6%</div> <div>93%</div> <div>5%</div> <div>•</div> </div>
1	C	284	<div> <div>3%</div> <div>94%</div> <div>5%</div> <div>• •</div> </div>
1	D	284	<div> <div>0%</div> <div>95%</div> <div>5%</div> <div>•</div> </div>
1	E	284	<div> <div>2%</div> <div>94%</div> <div>5%</div> <div>• •</div> </div>
2	F	5	<div> <div>40%</div> <div>60%</div> </div>

Continued on next page...

Continued from previous page...

Mol	Chain	Length	Quality of chain
2	G	5	 60%40%
2	H	5	 40%60%
2	I	5	 40%60%
2	J	5	 20%80%

The following table lists non-polymeric compounds, carbohydrate monomers and non-standard residues in protein, DNA, RNA chains that are outliers for geometric or electron-density-fit criteria:

Mol	Type	Chain	Res	Chirality	Geometry	Clashes	Electron density
4	GOL	A	414	-	-	X	-

2 Entry composition [i](#)

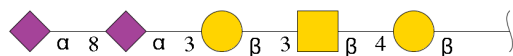
There are 5 unique types of molecules in this entry. The entry contains 13767 atoms, of which 0 are hydrogens and 0 are deuteriums.

In the tables below, the ZeroOcc column contains the number of atoms modelled with zero occupancy, the AltConf column contains the number of residues with at least one atom in alternate conformation and the Trace column contains the number of residues modelled with at most 2 atoms.

- Molecule 1 is a protein called Capsid protein VP1.

Mol	Chain	Residues	Atoms					ZeroOcc	AltConf	Trace
1	A	280	Total	C	N	O	S	0	17	0
			2283	1466	377	429	11			
1	B	280	Total	C	N	O	S	0	11	0
			2250	1439	376	425	10			
1	C	279	Total	C	N	O	S	0	13	0
			2247	1446	372	421	8			
1	D	284	Total	C	N	O	S	0	13	0
			2287	1462	377	435	13			
1	E	279	Total	C	N	O	S	0	13	0
			2256	1442	377	428	9			

- Molecule 2 is an oligosaccharide called N-acetyl-alpha-neuraminic acid-(2-8)-N-acetyl-alpha-neuraminic acid-(2-3)-beta-D-galactopyranose-(1-3)-2-acetamido-2-deoxy-beta-D-galactopyranose-(1-4)-beta-D-galactopyranose.



Mol	Chain	Residues	Atoms				ZeroOcc	AltConf	Trace
2	F	5	Total	C	N	O	0	0	0
			77	42	3	32			
2	G	5	Total	C	N	O	0	0	0
			77	42	3	32			
2	H	5	Total	C	N	O	0	0	0
			77	42	3	32			
2	I	5	Total	C	N	O	0	0	0
			77	42	3	32			
2	J	5	Total	C	N	O	0	0	0
			77	42	3	32			

- Molecule 3 is SULFATE ION (three-letter code: SO4) (formula: O₄S).



Mol	Chain	Residues	Atoms			ZeroOcc	AltConf
3	A	1	Total	O	S	0	0
			5	4	1		
3	A	1	Total	O	S	0	0
			5	4	1		
3	B	1	Total	O	S	0	0
			5	4	1		
3	B	1	Total	O	S	0	0
			5	4	1		
3	B	1	Total	O	S	0	0
			5	4	1		
3	C	1	Total	O	S	0	0
			5	4	1		
3	C	1	Total	O	S	0	0
			5	4	1		
3	C	1	Total	O	S	0	0
			5	4	1		
3	D	1	Total	O	S	0	0
			5	4	1		
3	D	1	Total	O	S	0	0
			5	4	1		
3	D	1	Total	O	S	0	0
			5	4	1		
3	E	1	Total	O	S	0	0
			5	4	1		
3	E	1	Total	O	S	0	0
			5	4	1		
3	E	1	Total	O	S	0	0
			5	4	1		

- Molecule 4 is GLYCEROL (three-letter code: GOL) (formula: $C_3H_8O_3$).



Mol	Chain	Residues	Atoms			ZeroOcc	AltConf
4	A	1	Total	C	O	0	0
			4	2	2		
4	A	1	Total	C	O	0	0
			6	3	3		
4	A	1	Total	C	O	0	0
			6	3	3		
4	A	1	Total	C	O	0	0
			4	2	2		
4	A	1	Total	C	O	0	0
			6	3	3		
4	A	1	Total	C	O	0	0
			4	2	2		
4	A	1	Total	C	O	0	0
			6	3	3		
4	B	1	Total	C	O	0	0
			6	3	3		
4	B	1	Total	C	O	0	0
			4	2	2		
4	B	1	Total	C	O	0	0
			6	3	3		
4	C	1	Total	C	O	0	0
			6	3	3		
4	C	1	Total	C	O	0	0
			4	2	2		
4	C	1	Total	C	O	0	0
			6	3	3		

Continued on next page...

Continued from previous page...

Mol	Chain	Residues	Atoms			ZeroOcc	AltConf
4	C	1	Total	C	O	0	0
			6	3	3		
4	D	1	Total	C	O	0	0
			4	2	2		
4	D	1	Total	C	O	0	0
			6	3	3		
4	D	1	Total	C	O	0	0
			4	2	2		
4	D	1	Total	C	O	0	0
			6	3	3		
4	E	1	Total	C	O	0	0
			6	3	3		
4	E	1	Total	C	O	0	0
			4	2	2		

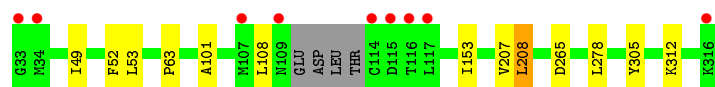
- Molecule 5 is water.

Mol	Chain	Residues	Atoms		ZeroOcc	AltConf
5	A	367	Total	O	0	0
			367	367		
5	B	342	Total	O	0	0
			342	342		
5	C	373	Total	O	0	0
			373	373		
5	D	422	Total	O	0	0
			422	422		
5	E	381	Total	O	0	0
			381	381		

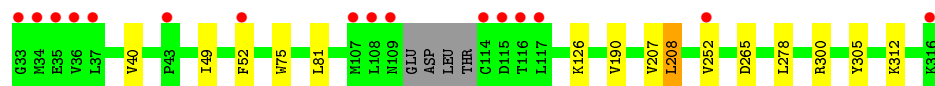
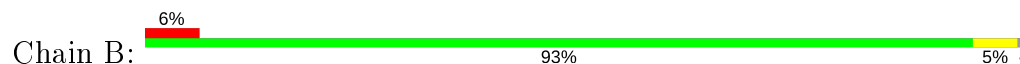
3 Residue-property plots [i](#)

These plots are drawn for all protein, RNA, DNA and oligosaccharide chains in the entry. The first graphic for a chain summarises the proportions of the various outlier classes displayed in the second graphic. The second graphic shows the sequence view annotated by issues in geometry and electron density. Residues are color-coded according to the number of geometric quality criteria for which they contain at least one outlier: green = 0, yellow = 1, orange = 2 and red = 3 or more. A red dot above a residue indicates a poor fit to the electron density ($RSRZ > 2$). Stretches of 2 or more consecutive residues without any outlier are shown as a green connector. Residues present in the sample, but not in the model, are shown in grey.

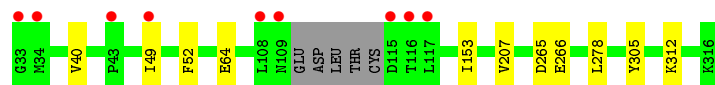
- Molecule 1: Capsid protein VP1



- Molecule 1: Capsid protein VP1



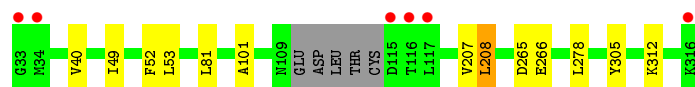
- Molecule 1: Capsid protein VP1



- Molecule 1: Capsid protein VP1



- Molecule 1: Capsid protein VP1



- Molecule 2: N-acetyl-alpha-neuraminic acid-(2-8)-N-acetyl-alpha-neuraminic acid-(2-3)-beta-D-galactopyranose-(1-3)-2-acetamido-2-deoxy-beta-D-galactopyranose-(1-4)-beta-D-galactopyranose

Chain F: 

GAL1	NGA2	GAL3	SIA4	SIA5
------	------	------	------	------

- Molecule 2: N-acetyl-alpha-neuraminic acid-(2-8)-N-acetyl-alpha-neuraminic acid-(2-3)-beta-D-galactopyranose-(1-3)-2-acetamido-2-deoxy-beta-D-galactopyranose-(1-4)-beta-D-galactopyranose

Chain G: 

GAL1	NGA2	GAL3	SIA4	SIA5
------	------	------	------	------

- Molecule 2: N-acetyl-alpha-neuraminic acid-(2-8)-N-acetyl-alpha-neuraminic acid-(2-3)-beta-D-galactopyranose-(1-3)-2-acetamido-2-deoxy-beta-D-galactopyranose-(1-4)-beta-D-galactopyranose

Chain H: 

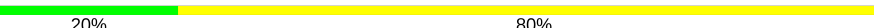
GAL1	NGA2	GAL3	SIA4	SIA5
------	------	------	------	------

- Molecule 2: N-acetyl-alpha-neuraminic acid-(2-8)-N-acetyl-alpha-neuraminic acid-(2-3)-beta-D-galactopyranose-(1-3)-2-acetamido-2-deoxy-beta-D-galactopyranose-(1-4)-beta-D-galactopyranose

Chain I: 

GAL1	NGA2	GAL3	SIA4	SIA5
------	------	------	------	------

- Molecule 2: N-acetyl-alpha-neuraminic acid-(2-8)-N-acetyl-alpha-neuraminic acid-(2-3)-beta-D-galactopyranose-(1-3)-2-acetamido-2-deoxy-beta-D-galactopyranose-(1-4)-beta-D-galactopyranose

Chain J: 

GAL1	NGA2	GAL3	SIA4	SIA5
------	------	------	------	------

4 Data and refinement statistics

Property	Value	Source
Space group	P 31 2 1	Depositor
Cell constants a, b, c, α , β , γ	219.55Å 219.55Å 99.60Å 90.00° 90.00° 120.00°	Depositor
Resolution (Å)	48.22 – 1.71 48.17 – 1.71	Depositor EDS
% Data completeness (in resolution range)	99.8 (48.22-1.71) 99.8 (48.17-1.71)	Depositor EDS
R_{merge}	(Not available)	Depositor
R_{sym}	0.07	Depositor
$\langle I/\sigma(I) \rangle$ ¹	2.43 (at 1.71Å)	Xtriage
Refinement program	REFMAC 5.7.0029	Depositor
R, R_{free}	0.155 , 0.172 0.153 , 0.171	Depositor DCC
R_{free} test set	8954 reflections (3.04%)	wwPDB-VP
Wilson B-factor (Å ²)	17.6	Xtriage
Anisotropy	0.057	Xtriage
Bulk solvent k_{sol} (e/Å ³), B_{sol} (Å ²)	0.35 , 46.7	EDS
L-test for twinning ²	$\langle L \rangle = 0.49$, $\langle L^2 \rangle = 0.32$	Xtriage
Estimated twinning fraction	0.019 for -h,-k,l	Xtriage
F_o, F_c correlation	0.97	EDS
Total number of atoms	13767	wwPDB-VP
Average B, all atoms (Å ²)	23.0	wwPDB-VP

Xtriage's analysis on translational NCS is as follows: *The largest off-origin peak in the Patterson function is 2.32% of the height of the origin peak. No significant pseudotranslation is detected.*

¹Intensities estimated from amplitudes.

²Theoretical values of $\langle |L| \rangle$, $\langle L^2 \rangle$ for acentric reflections are 0.5, 0.333 respectively for untwinned datasets, and 0.375, 0.2 for perfectly twinned datasets.

5 Model quality [i](#)

5.1 Standard geometry [i](#)

Bond lengths and bond angles in the following residue types are not validated in this section: GOL, SIA, GAL, NGA, SO4

The Z score for a bond length (or angle) is the number of standard deviations the observed value is removed from the expected value. A bond length (or angle) with $|Z| > 5$ is considered an outlier worth inspection. RMSZ is the root-mean-square of all Z scores of the bond lengths (or angles).

Mol	Chain	Bond lengths		Bond angles	
		RMSZ	# Z >5	RMSZ	# Z >5
1	A	0.34	0/2385	0.54	0/3244
1	B	0.33	0/2336	0.52	0/3181
1	C	0.33	0/2347	0.53	0/3201
1	D	0.35	0/2383	0.55	0/3244
1	E	0.35	0/2343	0.56	0/3190
All	All	0.34	0/11794	0.54	0/16060

There are no bond length outliers.

There are no bond angle outliers.

There are no chirality outliers.

There are no planarity outliers.

5.2 Too-close contacts [i](#)

In the following table, the Non-H and H(model) columns list the number of non-hydrogen atoms and hydrogen atoms in the chain respectively. The H(added) column lists the number of hydrogen atoms added and optimized by MolProbity. The Clashes column lists the number of clashes within the asymmetric unit, whereas Symm-Clashes lists symmetry related clashes.

Mol	Chain	Non-H	H(model)	H(added)	Clashes	Symm-Clashes
1	A	2283	0	2318	17	0
1	B	2250	0	2262	19	0
1	C	2247	0	2275	8	0
1	D	2287	0	2304	15	0
1	E	2256	0	2264	14	0
2	F	77	0	65	0	0
2	G	77	0	65	0	0
2	H	77	0	65	0	0

Continued on next page...

Continued from previous page...

Mol	Chain	Non-H	H(model)	H(added)	Clashes	Symm-Clashes
2	I	77	0	65	0	0
2	J	77	0	65	0	0
3	A	10	0	0	0	0
3	B	15	0	0	0	0
3	C	15	0	0	0	0
3	D	15	0	0	0	0
3	E	15	0	0	0	0
4	A	36	0	44	6	0
4	B	16	0	20	3	0
4	C	22	0	28	2	0
4	D	20	0	24	2	0
4	E	10	0	12	0	0
5	A	367	0	0	1	0
5	B	342	0	0	1	0
5	C	373	0	0	0	0
5	D	422	0	0	1	0
5	E	381	0	0	2	0
All	All	13767	0	11876	58	0

The all-atom clashscore is defined as the number of clashes found per 1000 atoms (including hydrogen atoms). The all-atom clashscore for this structure is 2.

All (58) close contacts within the same asymmetric unit are listed below, sorted by their clash magnitude.

Atom-1	Atom-2	Interatomic distance (Å)	Clash overlap (Å)
1:A:52[B]:PHE:CD1	1:B:208[B]:LEU:HD13	1.65	1.31
1:A:52[B]:PHE:CE1	1:B:208[B]:LEU:CD1	2.21	1.23
1:A:52[B]:PHE:CD1	1:B:208[B]:LEU:CD1	2.34	1.10
1:A:52[B]:PHE:CE1	1:B:208[B]:LEU:HD11	1.89	1.06
1:E:52[B]:PHE:CE2	5:E:749:HOH:O	2.05	1.06
1:A:52[B]:PHE:CZ	1:B:208[B]:LEU:HD11	1.96	1.01
1:A:52[B]:PHE:CG	1:B:208[B]:LEU:HD13	2.08	0.88
4:B:411:GOL:H11	1:C:266:GLU:H	1.46	0.81
4:D:412:GOL:H31	1:E:265:ASP:HA	1.65	0.78
1:D:52[A]:PHE:CE1	1:D:305:TYR:HB2	2.23	0.73
1:C:64:GLU:H	4:C:411:GOL:H12	1.53	0.73
1:D:52[A]:PHE:CD1	1:E:208:LEU:HD13	2.25	0.72
1:E:52[B]:PHE:CD2	5:E:749:HOH:O	2.35	0.68
4:B:411:GOL:H31	1:C:265:ASP:HA	1.77	0.67
1:A:49:ILE:HD11	1:A:278:LEU:HD23	1.79	0.64
4:C:412:GOL:H31	1:D:265:ASP:HA	1.80	0.64

Continued on next page...

Continued from previous page...

Atom-1	Atom-2	Interatomic distance (Å)	Clash overlap (Å)
1:B:49:ILE:HD11	1:B:278:LEU:HD23	1.81	0.62
1:D:52[A]:PHE:CE1	1:E:208:LEU:HD13	2.36	0.60
1:A:49:ILE:HD11	1:A:278:LEU:CD2	2.33	0.59
1:A:52[B]:PHE:CE1	1:B:208[B]:LEU:HD12	2.34	0.58
1:A:52[B]:PHE:CZ	1:B:208[B]:LEU:CD1	2.71	0.56
1:A:53[B]:LEU:HD21	1:A:101:ALA:HB2	1.88	0.56
1:D:49[A]:ILE:HD11	1:D:278:LEU:CD2	2.38	0.53
1:A:108[A]:LEU:HD21	1:A:312:LYS:HE2	1.92	0.52
1:B:49:ILE:HD11	1:B:278:LEU:CD2	2.40	0.50
1:E:49:ILE:HD11	1:E:278:LEU:HD23	1.94	0.49
1:A:52[B]:PHE:CE1	1:A:305:TYR:HB2	2.48	0.49
4:A:414:GOL:H11	1:B:265:ASP:CB	2.43	0.49
4:A:414:GOL:H11	1:B:265:ASP:HA	1.93	0.49
1:D:53[B]:LEU:HD21	1:D:101:ALA:HB2	1.94	0.49
1:D:52[A]:PHE:CE1	1:E:208:LEU:CD1	2.96	0.48
1:B:52[B]:PHE:CE1	1:B:305:TYR:HB2	2.49	0.47
1:C:49[B]:ILE:HD11	1:C:278:LEU:CD2	2.45	0.47
1:A:63:PRO:HA	4:A:404:GOL:H2	1.97	0.46
1:C:52[A]:PHE:CD1	1:D:208[A]:LEU:HG	2.51	0.45
1:E:52[A]:PHE:CE1	1:E:305:TYR:HB2	2.53	0.44
4:A:414:GOL:H11	1:B:265:ASP:HB2	1.98	0.44
1:E:53[B]:LEU:HD21	1:E:101:ALA:HB2	1.99	0.44
1:D:53[C]:LEU:HD11	1:D:101:ALA:HB2	1.98	0.44
1:E:49:ILE:HD11	1:E:278:LEU:CD2	2.48	0.43
1:D:153:ILE:HA	1:E:81:LEU:HD21	2.00	0.43
1:D:128[B]:GLU:HG2	5:D:778:HOH:O	2.18	0.43
1:D:49[A]:ILE:HD11	1:D:278:LEU:HD23	2.01	0.42
1:A:265:ASP:HB2	4:A:412:GOL:H11	2.00	0.42
4:A:414:GOL:H12	5:A:736:HOH:O	2.19	0.42
1:A:153:ILE:HA	1:B:81:LEU:HD21	2.01	0.42
4:D:412:GOL:H11	1:E:266:GLU:H	1.85	0.42
1:B:75:TRP:CZ3	1:B:300:ARG:HB2	2.55	0.41
1:C:40:VAL:HB	1:C:312:LYS:HB2	2.03	0.41
1:B:252[C]:VAL:HG12	5:B:609:HOH:O	2.20	0.41
1:C:52[A]:PHE:CE1	1:C:305:TYR:HB2	2.55	0.41
1:D:40:VAL:HB	1:D:312:LYS:HB2	2.03	0.41
1:E:40:VAL:HB	1:E:312:LYS:HB2	2.02	0.41
1:A:208[A]:LEU:HG	1:E:52[A]:PHE:CD1	2.57	0.40
1:B:126:LYS:HZ2	4:B:411:GOL:C2	2.34	0.40
1:D:53[B]:LEU:HD21	1:D:101:ALA:CB	2.51	0.40
1:B:40:VAL:HB	1:B:312:LYS:HB2	2.04	0.40

Continued on next page...

Continued from previous page...

Atom-1	Atom-2	Interatomic distance (Å)	Clash overlap (Å)
1:C:153:ILE:HA	1:D:81:LEU:HD21	2.04	0.40

There are no symmetry-related clashes.

5.3 Torsion angles [i](#)

5.3.1 Protein backbone [i](#)

In the following table, the Percentiles column shows the percent Ramachandran outliers of the chain as a percentile score with respect to all X-ray entries followed by that with respect to entries of similar resolution.

The Analysed column shows the number of residues for which the backbone conformation was analysed, and the total number of residues.

Mol	Chain	Analysed	Favoured	Allowed	Outliers	Percentiles	
1	A	293/284 (103%)	285 (97%)	7 (2%)	1 (0%)	41	24
1	B	288/284 (101%)	281 (98%)	6 (2%)	1 (0%)	41	24
1	C	291/284 (102%)	281 (97%)	9 (3%)	1 (0%)	41	24
1	D	296/284 (104%)	287 (97%)	8 (3%)	1 (0%)	41	24
1	E	288/284 (101%)	281 (98%)	6 (2%)	1 (0%)	41	24
All	All	1456/1420 (102%)	1415 (97%)	36 (2%)	5 (0%)	34	24

All (5) Ramachandran outliers are listed below:

Mol	Chain	Res	Type
1	A	207	VAL
1	B	207	VAL
1	C	207	VAL
1	D	207	VAL
1	E	207	VAL

5.3.2 Protein sidechains [i](#)

In the following table, the Percentiles column shows the percent sidechain outliers of the chain as a percentile score with respect to all X-ray entries followed by that with respect to entries of similar resolution.

The Analysed column shows the number of residues for which the sidechain conformation was

analysed, and the total number of residues.

Mol	Chain	Analysed	Rotameric	Outliers	Percentiles	
1	A	261/249 (105%)	259 (99%)	2 (1%)	81	73
1	B	255/249 (102%)	252 (99%)	3 (1%)	71	58
1	C	255/249 (102%)	255 (100%)	0	100	100
1	D	261/249 (105%)	259 (99%)	2 (1%)	81	73
1	E	256/249 (103%)	255 (100%)	1 (0%)	91	86
All	All	1288/1245 (104%)	1280 (99%)	8 (1%)	91	80

All (8) residues with a non-rotameric sidechain are listed below:

Mol	Chain	Res	Type
1	A	208[A]	LEU
1	A	208[B]	LEU
1	B	190	VAL
1	B	208[A]	LEU
1	B	208[B]	LEU
1	D	208[A]	LEU
1	D	208[B]	LEU
1	E	208	LEU

Some sidechains can be flipped to improve hydrogen bonding and reduce clashes. All (2) such sidechains are listed below:

Mol	Chain	Res	Type
1	C	293	ASN
1	D	293	ASN

5.3.3 RNA ⓘ

There are no RNA molecules in this entry.

5.4 Non-standard residues in protein, DNA, RNA chains ⓘ

There are no non-standard protein/DNA/RNA residues in this entry.

5.5 Carbohydrates ⓘ

25 monosaccharides are modelled in this entry.

In the following table, the Counts columns list the number of bonds (or angles) for which Mogul statistics could be retrieved, the number of bonds (or angles) that are observed in the model and the number of bonds (or angles) that are defined in the Chemical Component Dictionary. The Link column lists molecule types, if any, to which the group is linked. The Z score for a bond length (or angle) is the number of standard deviations the observed value is removed from the expected value. A bond length (or angle) with $|Z| > 2$ is considered an outlier worth inspection. RMSZ is the root-mean-square of all Z scores of the bond lengths (or angles).

Mol	Type	Chain	Res	Link	Bond lengths			Bond angles		
					Counts	RMSZ	$\# Z > 2$	Counts	RMSZ	$\# Z > 2$
2	GAL	F	1	2	12,12,12	0.47	0	17,17,17	0.88	1 (5%)
2	NGA	F	2	2	14,14,15	0.38	0	17,19,21	0.68	0
2	GAL	F	3	2	11,11,12	0.44	0	15,15,17	0.77	0
2	SIA	F	4	2	17,20,21	0.41	0	21,28,31	0.76	1 (4%)
2	SIA	F	5	2	17,20,21	0.39	0	21,28,31	0.83	1 (4%)
2	GAL	G	1	2	12,12,12	0.51	0	17,17,17	0.63	0
2	NGA	G	2	2	14,14,15	0.39	0	17,19,21	0.64	0
2	GAL	G	3	2	11,11,12	0.54	0	15,15,17	0.64	0
2	SIA	G	4	2	17,20,21	0.38	0	21,28,31	0.78	1 (4%)
2	SIA	G	5	2	17,20,21	0.37	0	21,28,31	0.82	1 (4%)
2	GAL	H	1	2	12,12,12	0.51	0	17,17,17	0.74	1 (5%)
2	NGA	H	2	2	14,14,15	0.41	0	17,19,21	0.63	0
2	GAL	H	3	2	11,11,12	0.63	0	15,15,17	0.67	0
2	SIA	H	4	2	17,20,21	0.42	0	21,28,31	0.75	1 (4%)
2	SIA	H	5	2	17,20,21	0.39	0	21,28,31	0.83	2 (9%)
2	GAL	I	1	2	12,12,12	0.51	0	17,17,17	0.95	2 (11%)
2	NGA	I	2	2	14,14,15	0.38	0	17,19,21	0.66	0
2	GAL	I	3	2	11,11,12	0.50	0	15,15,17	0.72	0
2	SIA	I	4	2	17,20,21	0.36	0	21,28,31	0.71	1 (4%)
2	SIA	I	5	2	17,20,21	0.37	0	21,28,31	0.77	1 (4%)
2	GAL	J	1	2	12,12,12	0.53	0	17,17,17	0.81	2 (11%)
2	NGA	J	2	2	14,14,15	0.40	0	17,19,21	0.70	0
2	GAL	J	3	2	11,11,12	0.59	0	15,15,17	0.82	1 (6%)
2	SIA	J	4	2	17,20,21	0.38	0	21,28,31	0.74	1 (4%)
2	SIA	J	5	2	17,20,21	0.34	0	21,28,31	0.88	2 (9%)

In the following table, the Chirals column lists the number of chiral outliers, the number of chiral centers analysed, the number of these observed in the model and the number defined in the Chemical Component Dictionary. Similar counts are reported in the Torsion and Rings columns. '-' means no outliers of that kind were identified.

Mol	Type	Chain	Res	Link	Chirals	Torsions	Rings
2	GAL	F	1	2	-	2/2/22/22	0/1/1/1
2	NGA	F	2	2	-	2/6/23/26	0/1/1/1
2	GAL	F	3	2	-	0/2/19/22	0/1/1/1
2	SIA	F	4	2	-	5/14/34/38	0/1/1/1
2	SIA	F	5	2	-	0/14/34/38	0/1/1/1
2	GAL	G	1	2	-	0/2/22/22	0/1/1/1
2	NGA	G	2	2	-	0/6/23/26	0/1/1/1
2	GAL	G	3	2	-	0/2/19/22	0/1/1/1
2	SIA	G	4	2	-	6/14/34/38	0/1/1/1
2	SIA	G	5	2	-	0/14/34/38	0/1/1/1
2	GAL	H	1	2	-	2/2/22/22	0/1/1/1
2	NGA	H	2	2	-	0/6/23/26	0/1/1/1
2	GAL	H	3	2	-	0/2/19/22	0/1/1/1
2	SIA	H	4	2	-	6/14/34/38	0/1/1/1
2	SIA	H	5	2	-	0/14/34/38	0/1/1/1
2	GAL	I	1	2	-	2/2/22/22	0/1/1/1
2	NGA	I	2	2	-	0/6/23/26	0/1/1/1
2	GAL	I	3	2	-	0/2/19/22	0/1/1/1
2	SIA	I	4	2	-	3/14/34/38	0/1/1/1
2	SIA	I	5	2	-	0/14/34/38	0/1/1/1
2	GAL	J	1	2	-	2/2/22/22	0/1/1/1
2	NGA	J	2	2	-	0/6/23/26	0/1/1/1
2	GAL	J	3	2	-	0/2/19/22	0/1/1/1
2	SIA	J	4	2	-	4/14/34/38	0/1/1/1
2	SIA	J	5	2	-	0/14/34/38	0/1/1/1

There are no bond length outliers.

All (19) bond angle outliers are listed below:

Mol	Chain	Res	Type	Atoms	Z	Observed(°)	Ideal(°)
2	F	5	SIA	C6-O6-C2	2.78	117.29	111.34
2	G	4	SIA	C6-O6-C2	2.55	116.80	111.34
2	H	5	SIA	C6-O6-C2	2.52	116.72	111.34
2	J	5	SIA	C6-O6-C2	2.50	116.69	111.34
2	J	4	SIA	C6-O6-C2	2.48	116.64	111.34
2	F	4	SIA	C6-O6-C2	2.41	116.50	111.34
2	I	1	GAL	C3-C4-C5	-2.38	106.00	110.24
2	G	5	SIA	C6-O6-C2	2.34	116.35	111.34
2	I	5	SIA	C6-O6-C2	2.33	116.32	111.34
2	H	4	SIA	C6-O6-C2	2.26	116.18	111.34

Continued on next page...

Continued from previous page...

Mol	Chain	Res	Type	Atoms	Z	Observed(°)	Ideal(°)
2	J	3	GAL	C1-O5-C5	2.25	115.24	112.19
2	F	1	GAL	C3-C4-C5	-2.22	106.28	110.24
2	H	1	GAL	O5-C5-C6	2.20	111.90	106.44
2	I	1	GAL	O5-C5-C6	2.18	111.84	106.44
2	J	1	GAL	C3-C4-C5	-2.17	106.36	110.24
2	J	5	SIA	C4-C3-C2	2.14	113.64	109.81
2	J	1	GAL	O5-C5-C6	2.08	111.61	106.44
2	I	4	SIA	C6-O6-C2	2.07	115.78	111.34
2	H	5	SIA	C4-C3-C2	2.05	113.48	109.81

There are no chirality outliers.

All (34) torsion outliers are listed below:

Mol	Chain	Res	Type	Atoms
2	H	1	GAL	O5-C5-C6-O6
2	I	1	GAL	O5-C5-C6-O6
2	J	1	GAL	O5-C5-C6-O6
2	I	1	GAL	C4-C5-C6-O6
2	J	1	GAL	C4-C5-C6-O6
2	H	1	GAL	C4-C5-C6-O6
2	G	4	SIA	C6-C7-C8-O8
2	H	4	SIA	C6-C7-C8-O8
2	J	4	SIA	C6-C7-C8-O8
2	G	4	SIA	C6-C7-C8-C9
2	H	4	SIA	C6-C7-C8-C9
2	J	4	SIA	C6-C7-C8-C9
2	H	4	SIA	O7-C7-C8-O8
2	I	4	SIA	C6-C7-C8-O8
2	F	4	SIA	C6-C7-C8-O8
2	G	4	SIA	O7-C7-C8-O8
2	J	4	SIA	O7-C7-C8-O8
2	F	1	GAL	C4-C5-C6-O6
2	F	4	SIA	C6-C7-C8-C9
2	G	4	SIA	O8-C8-C9-O9
2	F	2	NGA	C4-C5-C6-O6
2	I	4	SIA	C6-C7-C8-C9
2	H	4	SIA	O8-C8-C9-O9
2	G	4	SIA	C7-C8-C9-O9
2	F	1	GAL	O5-C5-C6-O6
2	H	4	SIA	O7-C7-C8-C9
2	F	4	SIA	O7-C7-C8-O8
2	H	4	SIA	C7-C8-C9-O9

Continued on next page...

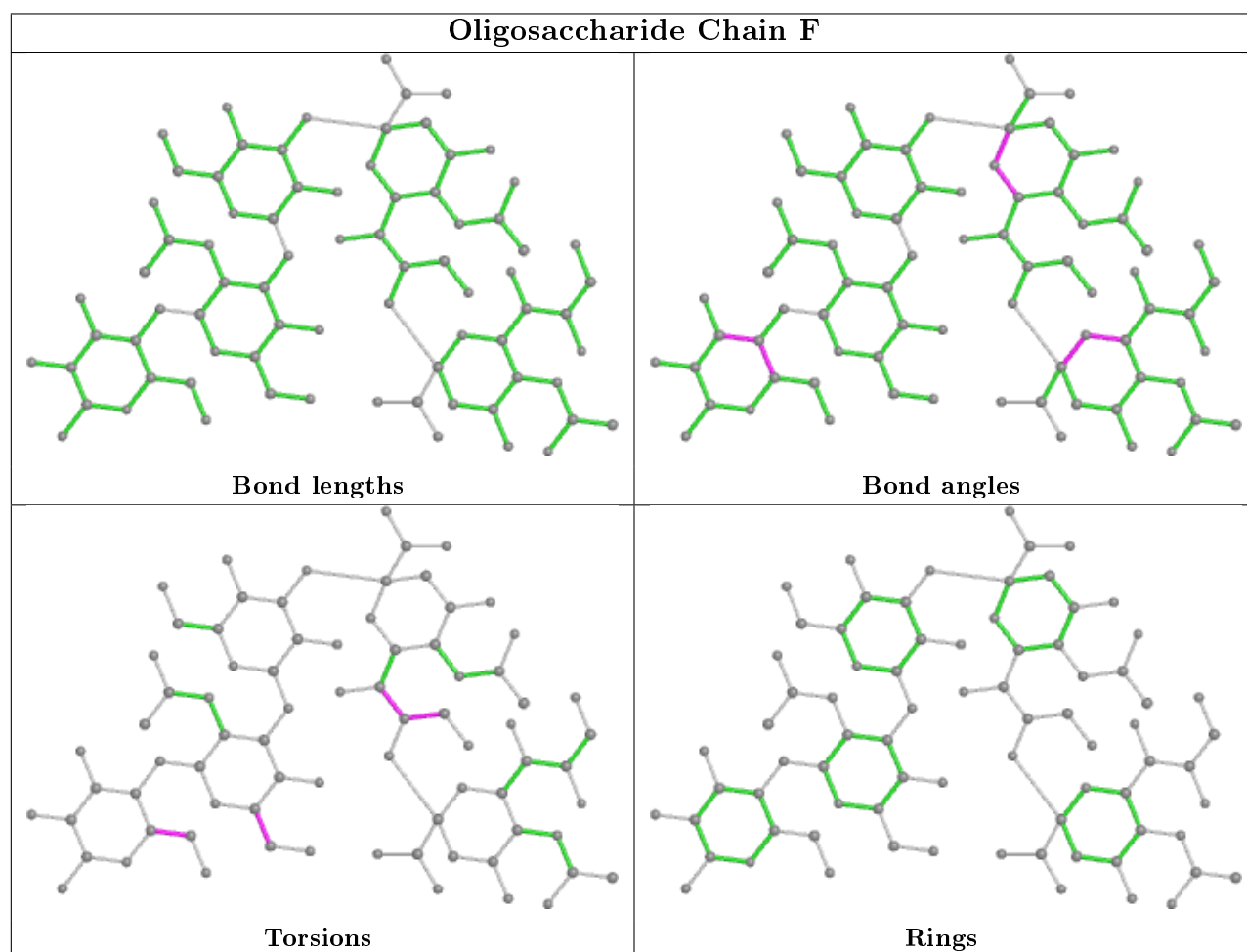
Continued from previous page...

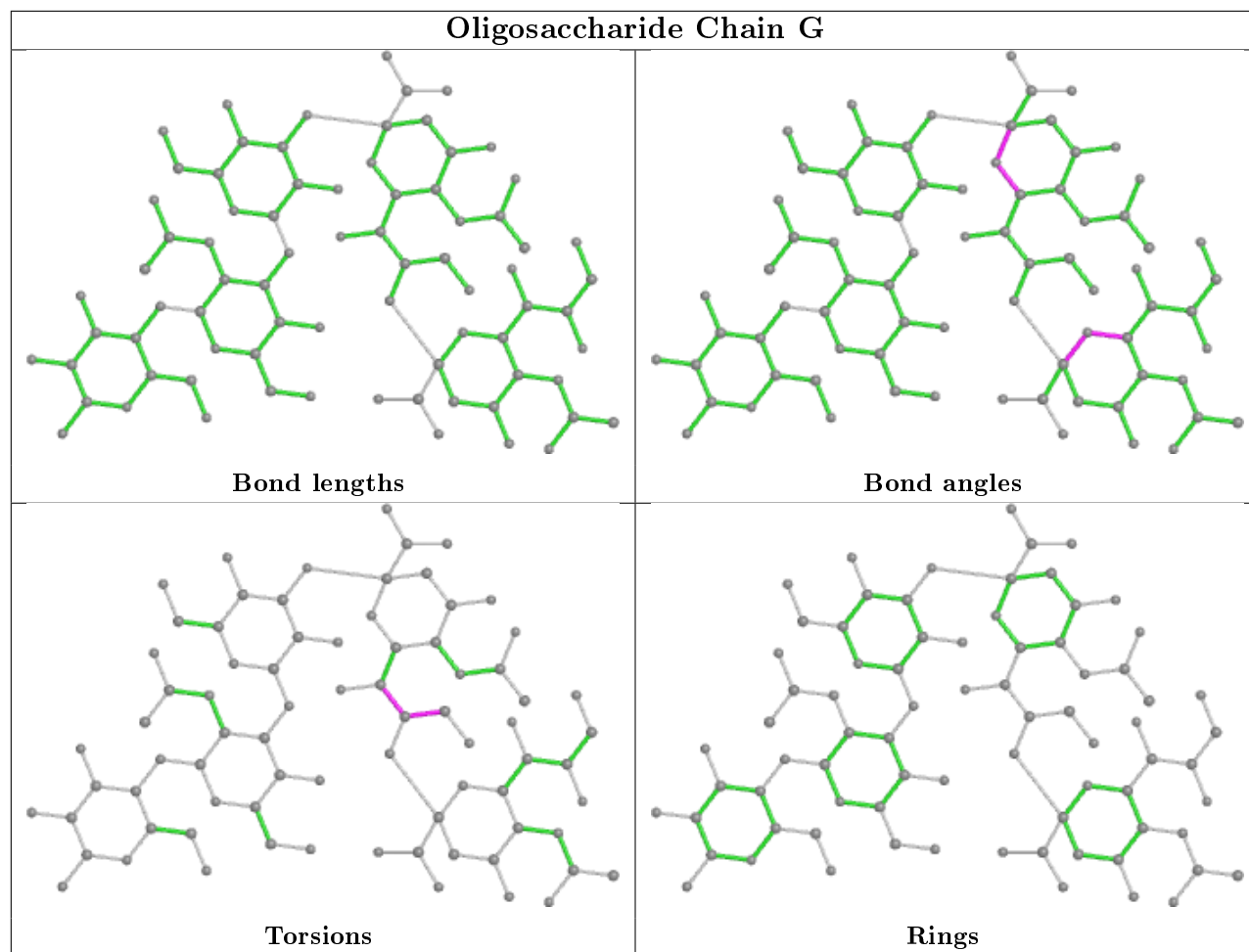
Mol	Chain	Res	Type	Atoms
2	F	2	NGA	O5-C5-C6-O6
2	G	4	SIA	O7-C7-C8-C9
2	J	4	SIA	O7-C7-C8-C9
2	I	4	SIA	O7-C7-C8-O8
2	F	4	SIA	O7-C7-C8-C9
2	F	4	SIA	O8-C8-C9-O9

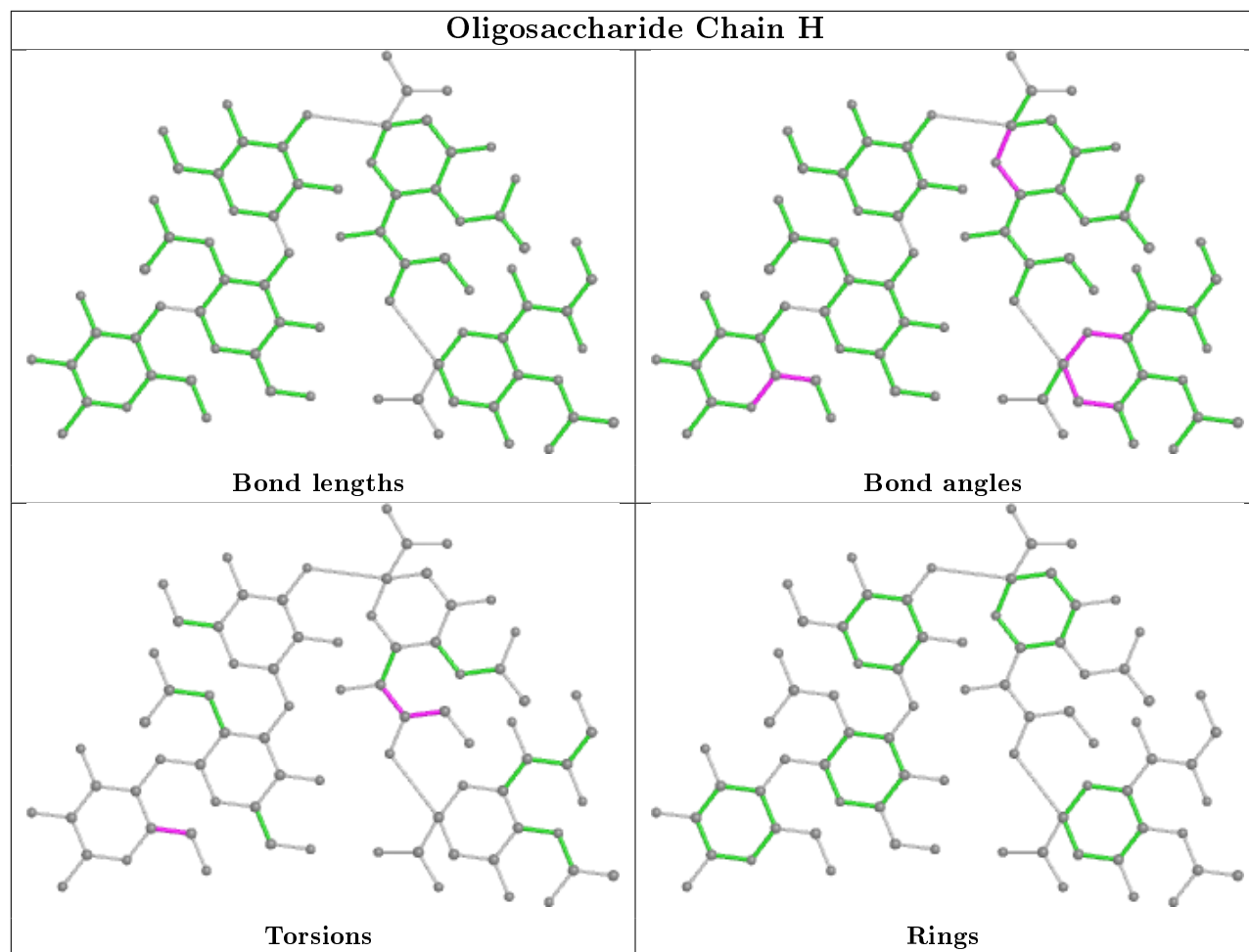
There are no ring outliers.

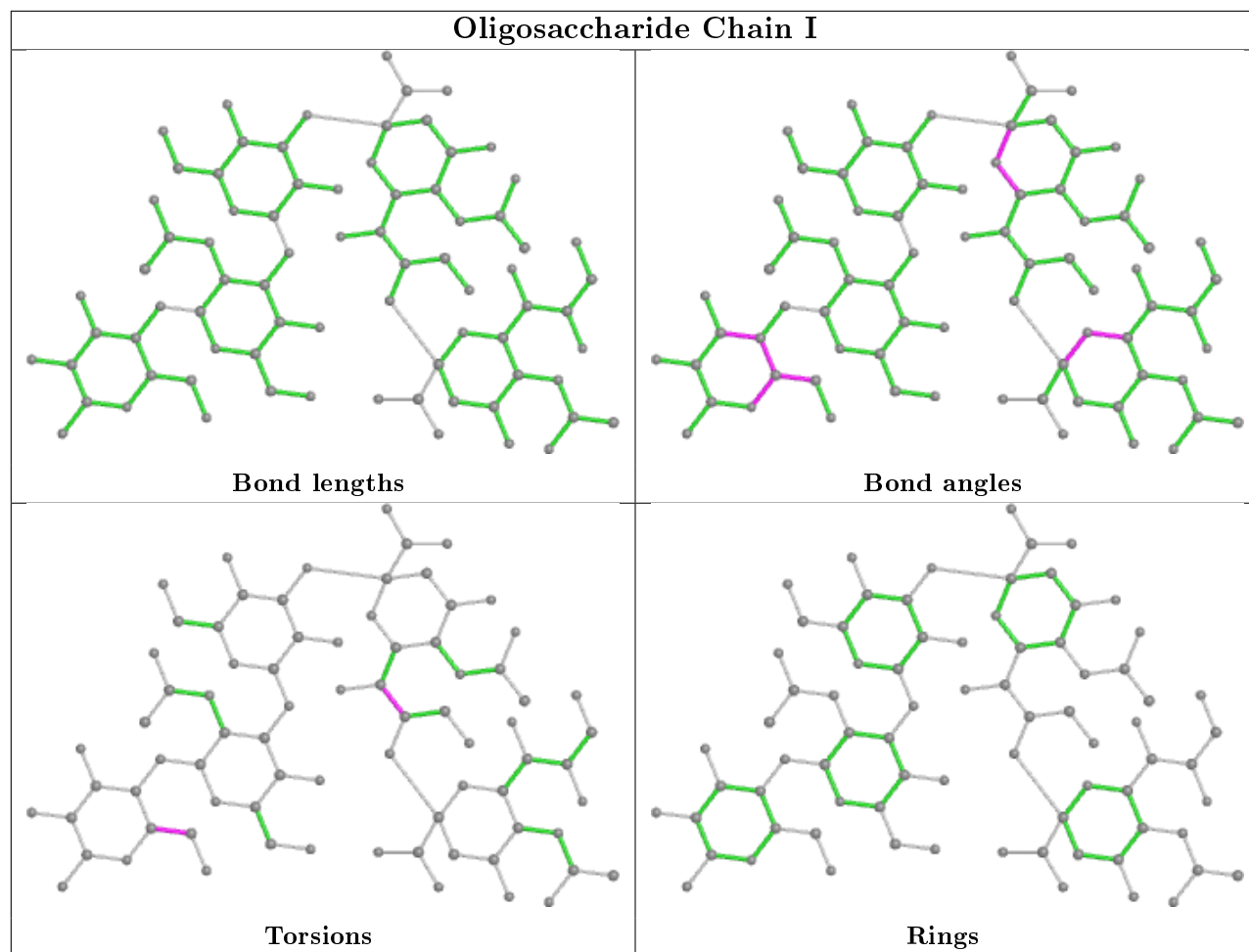
No monomer is involved in short contacts.

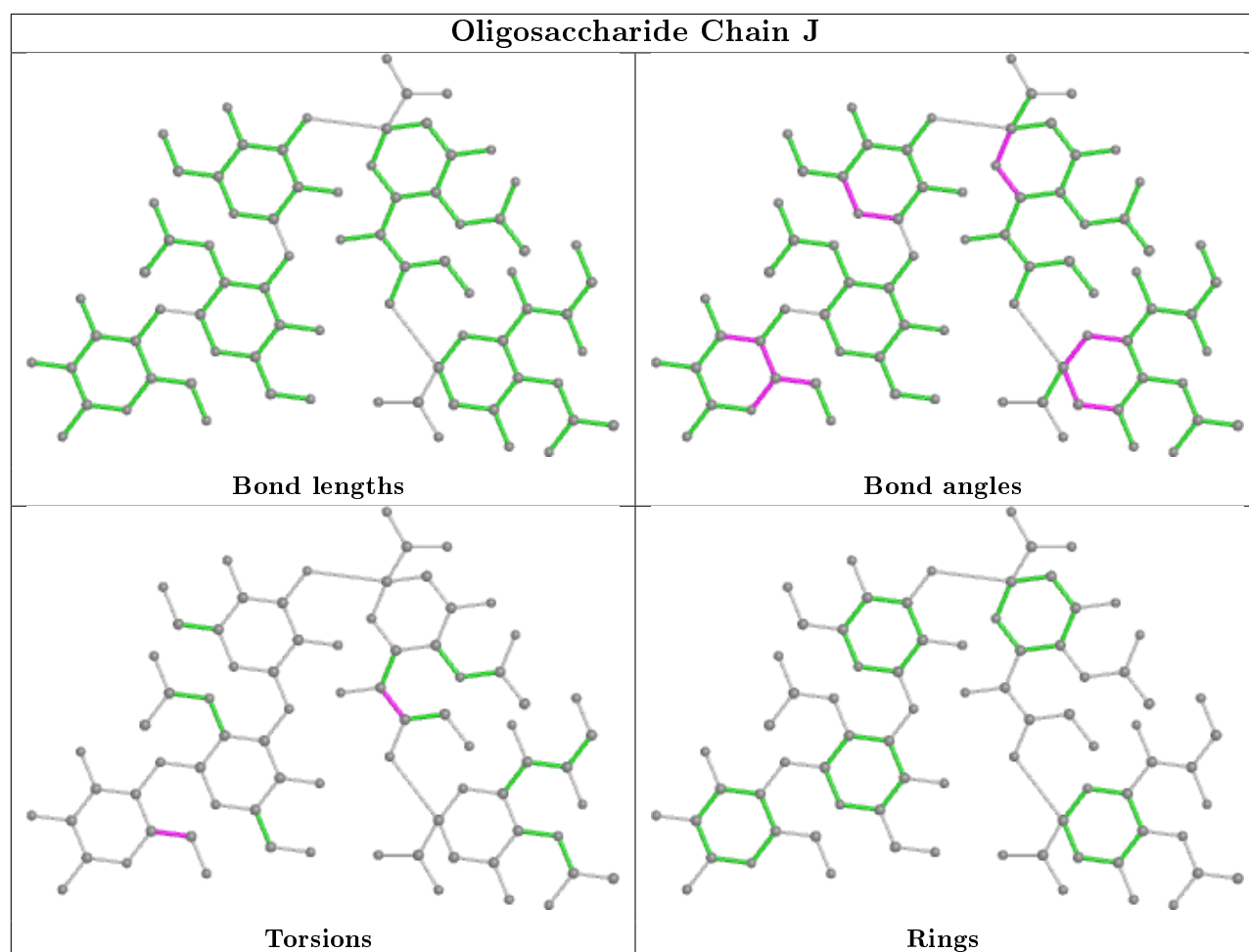
The following is a two-dimensional graphical depiction of Mogul quality analysis of bond lengths, bond angles, torsion angles, and ring geometry for oligosaccharide.











5.6 Ligand geometry [i](#)

34 ligands are modelled in this entry.

In the following table, the Counts columns list the number of bonds (or angles) for which Mogul statistics could be retrieved, the number of bonds (or angles) that are observed in the model and the number of bonds (or angles) that are defined in the Chemical Component Dictionary. The Link column lists molecule types, if any, to which the group is linked. The Z score for a bond length (or angle) is the number of standard deviations the observed value is removed from the expected value. A bond length (or angle) with $|Z| > 2$ is considered an outlier worth inspection. RMSZ is the root-mean-square of all Z scores of the bond lengths (or angles).

Mol	Type	Chain	Res	Link	Bond lengths			Bond angles		
					Counts	RMSZ	$\# Z > 2$	Counts	RMSZ	$\# Z > 2$
3	SO4	D	409	-	4,4,4	0.32	0	6,6,6	0.07	0
3	SO4	A	401	-	4,4,4	0.29	0	6,6,6	0.14	0
4	GOL	A	414	-	5,5,5	0.27	0	5,5,5	0.27	0
4	GOL	B	402	-	5,5,5	0.27	0	5,5,5	0.30	0
4	GOL	D	401	-	3,3,5	0.40	0	2,2,5	0.51	0
3	SO4	E	410	-	4,4,4	0.33	0	6,6,6	0.13	0

Mol	Type	Chain	Res	Link	Bond lengths			Bond angles		
					Counts	RMSZ	# Z > 2	Counts	RMSZ	# Z > 2
3	SO4	C	410	-	4,4,4	0.33	0	6,6,6	0.11	0
3	SO4	D	410	-	4,4,4	0.29	0	6,6,6	0.19	0
4	GOL	C	402	-	5,5,5	0.24	0	5,5,5	0.29	0
4	GOL	A	402	-	3,3,5	0.47	0	2,2,5	0.37	0
3	SO4	B	408	-	4,4,4	0.33	0	6,6,6	0.04	0
4	GOL	B	410	-	3,3,5	0.42	0	2,2,5	0.46	0
4	GOL	E	403	-	3,3,5	0.41	0	2,2,5	0.47	0
3	SO4	E	401	-	4,4,4	0.29	0	6,6,6	0.17	0
4	GOL	A	413	-	3,3,5	0.34	0	2,2,5	0.67	0
3	SO4	C	401	-	4,4,4	0.32	0	6,6,6	0.09	0
4	GOL	A	405	-	3,3,5	0.40	0	2,2,5	0.45	0
3	SO4	C	409	-	4,4,4	0.31	0	6,6,6	0.06	0
4	GOL	D	411	-	3,3,5	0.45	0	2,2,5	0.38	0
4	GOL	C	412	-	5,5,5	0.28	0	5,5,5	0.11	0
4	GOL	E	402	-	5,5,5	0.24	0	5,5,5	0.34	0
3	SO4	B	401	-	4,4,4	0.28	0	6,6,6	0.06	0
4	GOL	A	404	-	5,5,5	0.25	0	5,5,5	0.26	0
4	GOL	A	403	-	5,5,5	0.26	0	5,5,5	0.28	0
3	SO4	A	411	-	4,4,4	0.32	0	6,6,6	0.05	0
3	SO4	E	409	-	4,4,4	0.33	0	6,6,6	0.05	0
4	GOL	D	412	-	5,5,5	0.23	0	5,5,5	0.27	0
3	SO4	D	403	-	4,4,4	0.29	0	6,6,6	0.17	0
3	SO4	B	409	-	4,4,4	0.30	0	6,6,6	0.11	0
4	GOL	C	411	-	5,5,5	0.27	0	5,5,5	0.30	0
4	GOL	C	403	-	3,3,5	0.43	0	2,2,5	0.44	0
4	GOL	D	402	-	5,5,5	0.25	0	5,5,5	0.31	0
4	GOL	A	412	-	5,5,5	0.27	0	5,5,5	0.23	0
4	GOL	B	411	-	5,5,5	0.26	0	5,5,5	0.13	0

In the following table, the Chirals column lists the number of chiral outliers, the number of chiral centers analysed, the number of these observed in the model and the number defined in the Chemical Component Dictionary. Similar counts are reported in the Torsion and Rings columns. '-' means no outliers of that kind were identified.

Mol	Type	Chain	Res	Link	Chirals	Torsions	Rings
4	GOL	E	402	-	-	2/4/4/4	-
4	GOL	A	412	-	-	0/4/4/4	-
4	GOL	C	402	-	-	1/4/4/4	-
4	GOL	A	414	-	-	2/4/4/4	-
4	GOL	A	402	-	-	1/1/1/4	-
4	GOL	D	401	-	-	0/1/1/4	-
4	GOL	C	412	-	-	4/4/4/4	-

Continued on next page...

Continued from previous page...

Mol	Type	Chain	Res	Link	Chirals	Torsions	Rings
4	GOL	B	410	-	-	0/1/1/4	-
4	GOL	E	403	-	-	0/1/1/4	-
4	GOL	C	411	-	-	2/4/4/4	-
4	GOL	A	404	-	-	2/4/4/4	-
4	GOL	A	403	-	-	1/4/4/4	-
4	GOL	A	413	-	-	0/1/1/4	-
4	GOL	D	402	-	-	1/4/4/4	-
4	GOL	B	411	-	-	4/4/4/4	-
4	GOL	D	412	-	-	4/4/4/4	-
4	GOL	A	405	-	-	1/1/1/4	-
4	GOL	C	403	-	-	0/1/1/4	-
4	GOL	D	411	-	-	1/1/1/4	-
4	GOL	B	402	-	-	0/4/4/4	-

There are no bond length outliers.

There are no bond angle outliers.

There are no chirality outliers.

All (26) torsion outliers are listed below:

Mol	Chain	Res	Type	Atoms
4	C	412	GOL	C1-C2-C3-O3
4	A	404	GOL	O1-C1-C2-C3
4	D	412	GOL	O1-C1-C2-O2
4	B	411	GOL	O1-C1-C2-O2
4	B	411	GOL	O1-C1-C2-C3
4	B	411	GOL	C1-C2-C3-O3
4	B	411	GOL	O2-C2-C3-O3
4	A	414	GOL	C1-C2-C3-O3
4	C	412	GOL	O1-C1-C2-C3
4	E	402	GOL	C1-C2-C3-O3
4	A	403	GOL	O1-C1-C2-C3
4	D	412	GOL	O1-C1-C2-C3
4	C	411	GOL	C1-C2-C3-O3
4	D	402	GOL	C1-C2-C3-O3
4	C	412	GOL	O2-C2-C3-O3
4	A	404	GOL	O1-C1-C2-O2
4	C	412	GOL	O1-C1-C2-O2
4	A	405	GOL	O1-C1-C2-O2
4	D	411	GOL	O1-C1-C2-O2
4	E	402	GOL	O2-C2-C3-O3

Continued on next page...

Continued from previous page...

Mol	Chain	Res	Type	Atoms
4	A	402	GOL	O1-C1-C2-O2
4	D	412	GOL	C1-C2-C3-O3
4	A	414	GOL	O2-C2-C3-O3
4	D	412	GOL	O2-C2-C3-O3
4	C	402	GOL	O1-C1-C2-C3
4	C	411	GOL	O2-C2-C3-O3

There are no ring outliers.

7 monomers are involved in 13 short contacts:

Mol	Chain	Res	Type	Clashes	Symm-Clashes
4	A	414	GOL	4	0
4	C	412	GOL	1	0
4	A	404	GOL	1	0
4	D	412	GOL	2	0
4	C	411	GOL	1	0
4	A	412	GOL	1	0
4	B	411	GOL	3	0

5.7 Other polymers [i](#)

There are no such residues in this entry.

5.8 Polymer linkage issues [i](#)

There are no chain breaks in this entry.

6 Fit of model and data ⓘ

6.1 Protein, DNA and RNA chains ⓘ

In the following table, the column labelled ‘#RSRZ> 2’ contains the number (and percentage) of RSRZ outliers, followed by percent RSRZ outliers for the chain as percentile scores relative to all X-ray entries and entries of similar resolution. The OWAB column contains the minimum, median, 95th percentile and maximum values of the occupancy-weighted average B-factor per residue. The column labelled ‘Q< 0.9’ lists the number of (and percentage) of residues with an average occupancy less than 0.9.

Mol	Chain	Analysed	<RSRZ>	#RSRZ>2			OWAB(Å ²)	Q<0.9
1	A	280/284 (98%)	-0.34	9 (3%)	47	52	11, 16, 42, 93	0
1	B	280/284 (98%)	-0.19	16 (5%)	23	26	14, 20, 43, 93	0
1	C	279/284 (98%)	-0.27	9 (3%)	47	52	12, 20, 42, 74	0
1	D	284/284 (100%)	-0.46	4 (1%)	75	79	11, 17, 33, 77	0
1	E	279/284 (98%)	-0.37	6 (2%)	62	66	10, 16, 40, 89	1 (0%)
All	All	1402/1420 (98%)	-0.33	44 (3%)	49	53	10, 18, 41, 93	1 (0%)

All (44) RSRZ outliers are listed below:

Mol	Chain	Res	Type	RSRZ
1	B	114	CYS	9.7
1	A	114	CYS	7.2
1	E	115	ASP	6.2
1	E	34	MET	6.2
1	A	115	ASP	5.9
1	B	34	MET	5.7
1	A	34	MET	5.2
1	E	33	GLY	5.1
1	B	107	MET	5.0
1	A	33	GLY	4.5
1	B	117	LEU	4.4
1	C	34	MET	4.3
1	C	117	LEU	4.3
1	B	115	ASP	4.3
1	B	33	GLY	4.2
1	C	116	THR	4.2
1	D	34	MET	4.1
1	B	316	LYS	3.9
1	C	115	ASP	3.7
1	B	116	THR	3.4

Continued on next page...

Continued from previous page...

Mol	Chain	Res	Type	RSRZ
1	B	109[A]	ASN	3.3
1	E	116	THR	3.3
1	C	33	GLY	3.3
1	B	108[A]	LEU	3.2
1	C	109	ASN	3.2
1	C	108	LEU	3.1
1	D	33	GLY	3.1
1	A	116	THR	2.9
1	A	107	MET	2.7
1	C	43	PRO	2.7
1	B	43	PRO	2.6
1	E	117	LEU	2.5
1	D	43	PRO	2.4
1	B	35	GLU	2.4
1	A	109[A]	ASN	2.4
1	C	49[A]	ILE	2.3
1	D	294	TYR	2.3
1	E	316	LYS	2.2
1	B	252[A]	VAL	2.2
1	A	316	LYS	2.2
1	B	37	LEU	2.1
1	B	36	VAL	2.1
1	B	52[A]	PHE	2.1
1	A	117	LEU	2.0

6.2 Non-standard residues in protein, DNA, RNA chains [i](#)

There are no non-standard protein/DNA/RNA residues in this entry.

6.3 Carbohydrates [i](#)

In the following table, the Atoms column lists the number of modelled atoms in the group and the number defined in the chemical component dictionary. The B-factors column lists the minimum, median, 95th percentile and maximum values of B factors of atoms in the group. The column labelled 'Q< 0.9' lists the number of atoms with occupancy less than 0.9.

Mol	Type	Chain	Res	Atoms	RSCC	RSR	B-factors(Å ²)	Q<0.9
2	GAL	J	1	12/12	0.63	0.31	55,69,76,78	0
2	GAL	G	1	12/12	0.68	0.31	54,68,76,77	0
2	GAL	I	1	12/12	0.69	0.24	51,67,78,79	0
2	GAL	F	1	12/12	0.76	0.22	44,63,70,76	0

Continued on next page...

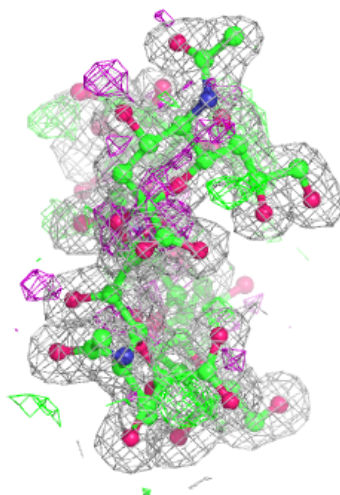
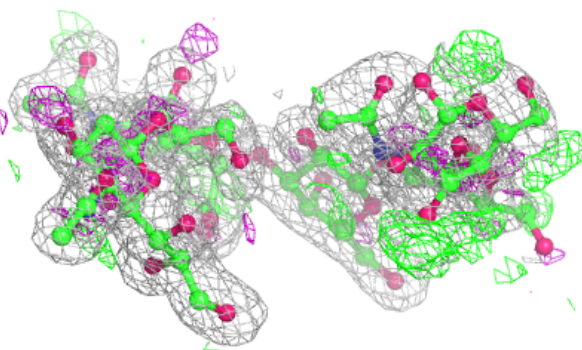
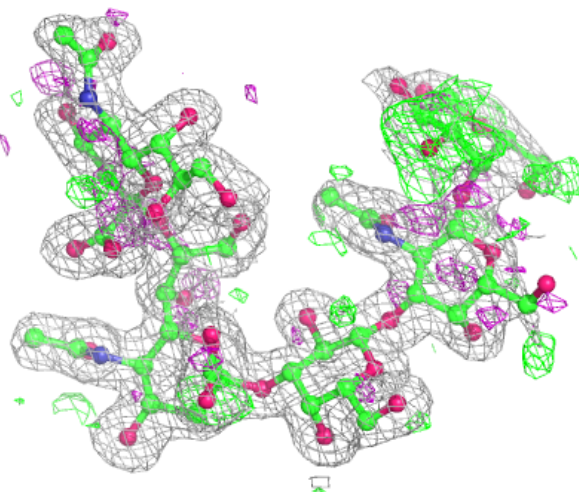
Continued from previous page...

Mol	Type	Chain	Res	Atoms	RSCC	RSR	B-factors(\AA^2)	Q<0.9
2	GAL	H	1	12/12	0.82	0.31	50,64,70,71	0
2	GAL	J	3	11/12	0.84	0.14	20,25,27,28	0
2	NGA	G	2	14/15	0.84	0.33	32,48,53,55	0
2	SIA	J	4	20/21	0.87	0.13	16,23,34,35	0
2	SIA	G	4	20/21	0.89	0.11	19,25,36,40	0
2	NGA	H	2	14/15	0.89	0.25	30,45,55,56	0
2	NGA	J	2	14/15	0.89	0.23	28,44,53,55	0
2	GAL	G	3	11/12	0.90	0.13	24,28,33,33	0
2	SIA	G	5	20/21	0.90	0.16	25,32,38,46	0
2	SIA	H	5	20/21	0.90	0.16	24,31,35,39	0
2	NGA	F	2	14/15	0.92	0.18	25,40,56,92	0
2	SIA	J	5	20/21	0.92	0.13	22,30,36,37	0
2	GAL	H	3	11/12	0.93	0.14	23,24,29,30	0
2	SIA	F	5	20/21	0.93	0.13	22,27,34,36	0
2	NGA	I	2	14/15	0.94	0.21	24,40,46,54	0
2	SIA	I	5	20/21	0.94	0.12	22,26,35,40	0
2	SIA	F	4	20/21	0.94	0.10	16,21,29,34	0
2	GAL	I	3	11/12	0.94	0.08	19,22,23,27	0
2	SIA	H	4	20/21	0.95	0.10	19,23,37,38	0
2	GAL	F	3	11/12	0.96	0.09	20,22,23,26	0
2	SIA	I	4	20/21	0.96	0.07	17,20,29,36	0

The following is a graphical depiction of the model fit to experimental electron density for oligosaccharide. Each fit is shown from different orientation to approximate a three-dimensional view.

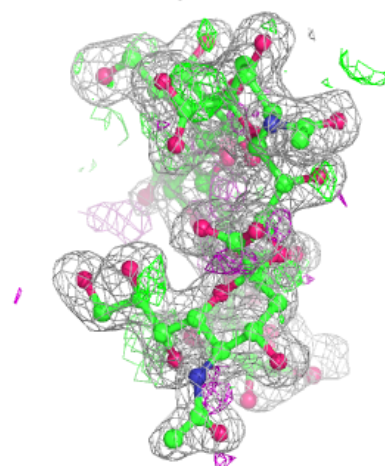
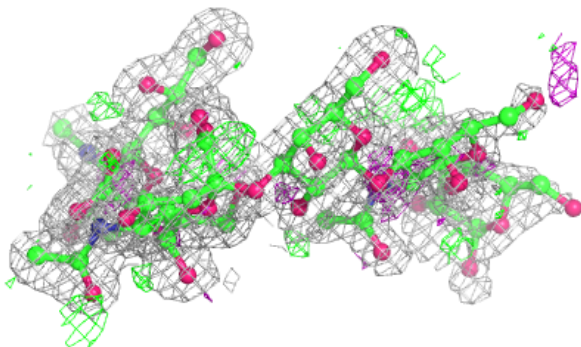
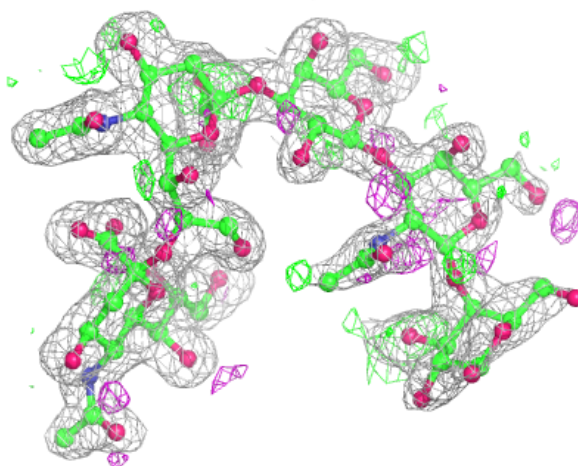
Electron density around Chain F:

$2mF_o-DF_c$ (at 0.7 rmsd) in gray
 mF_o-DF_c (at 3 rmsd) in purple (negative)
and green (positive)



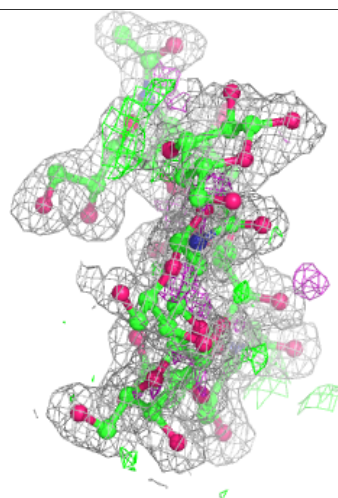
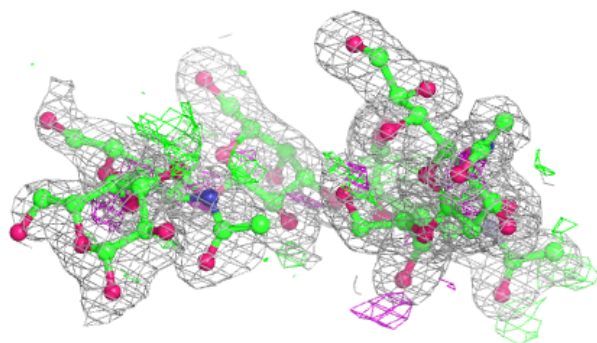
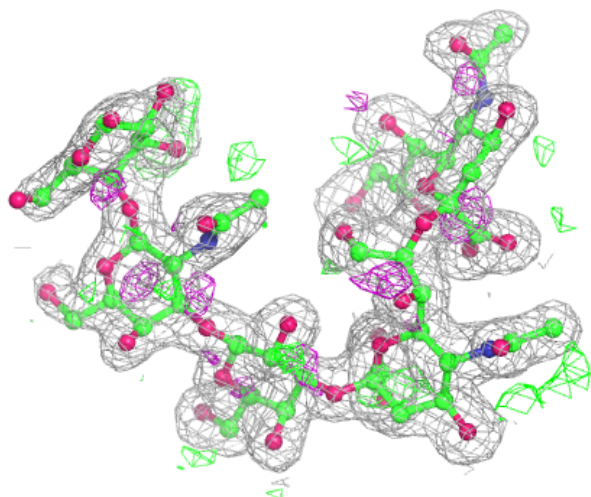
Electron density around Chain G:

$2mF_o-DF_c$ (at 0.7 rmsd) in gray
 mF_o-DF_c (at 3 rmsd) in purple (negative)
and green (positive)



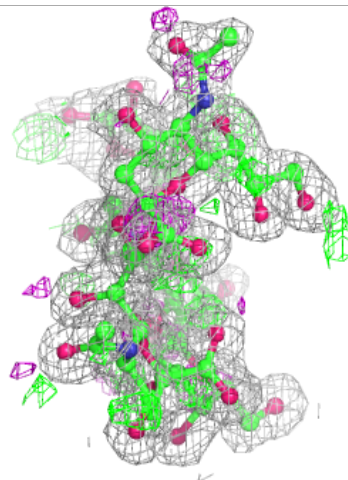
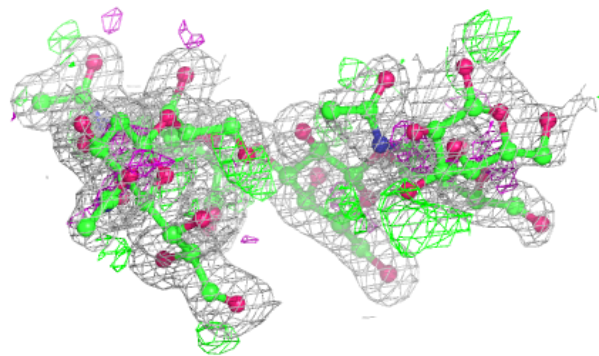
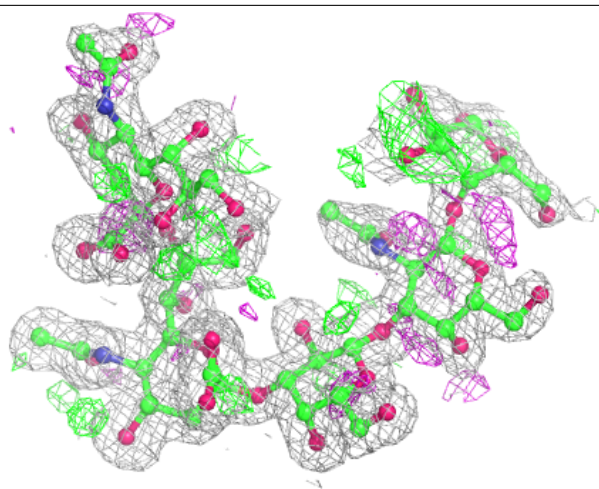
Electron density around Chain H:

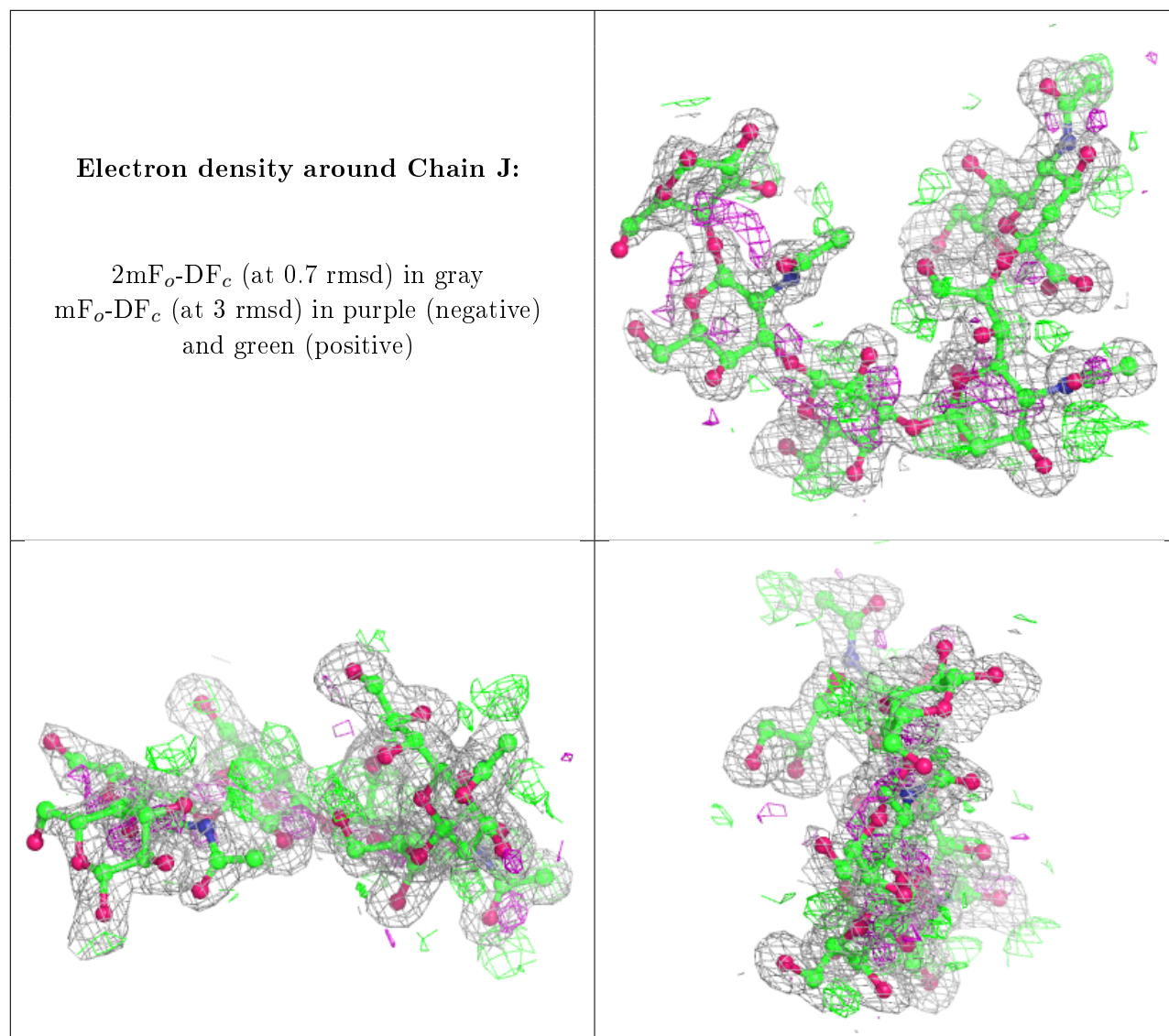
$2mF_o-DF_c$ (at 0.7 rmsd) in gray
 mF_o-DF_c (at 3 rmsd) in purple (negative)
and green (positive)



Electron density around Chain I:

$2mF_o-DF_c$ (at 0.7 rmsd) in gray
 mF_o-DF_c (at 3 rmsd) in purple (negative)
and green (positive)





6.4 Ligands ⓘ

In the following table, the Atoms column lists the number of modelled atoms in the group and the number defined in the chemical component dictionary. The B-factors column lists the minimum, median, 95th percentile and maximum values of B factors of atoms in the group. The column labelled 'Q< 0.9' lists the number of atoms with occupancy less than 0.9.

Mol	Type	Chain	Res	Atoms	RSCC	RSR	B-factors(Å ²)	Q<0.9
4	GOL	B	411	6/6	0.85	0.14	30,50,58,68	0
4	GOL	A	402	4/6	0.86	0.12	38,39,42,45	0
4	GOL	C	402	6/6	0.86	0.18	40,46,48,49	6
4	GOL	A	412	6/6	0.89	0.17	30,48,53,57	0
3	SO4	A	411	5/5	0.90	0.13	34,46,49,49	5
3	SO4	B	408	5/5	0.90	0.15	33,40,44,45	5
4	GOL	C	412	6/6	0.90	0.25	27,45,55,74	0

Continued on next page...

Continued from previous page...

Mol	Type	Chain	Res	Atoms	RSCC	RSR	B-factors(\AA^2)	Q<0.9
3	SO4	E	409	5/5	0.91	0.13	25,37,37,38	5
4	GOL	D	412	6/6	0.91	0.17	28,45,51,63	0
4	GOL	C	411	6/6	0.91	0.17	30,42,56,58	0
4	GOL	D	402	6/6	0.91	0.13	28,33,34,37	6
4	GOL	A	414	6/6	0.91	0.13	30,48,52,56	0
3	SO4	C	401	5/5	0.91	0.12	29,35,47,47	5
4	GOL	B	402	6/6	0.92	0.25	45,48,52,52	0
4	GOL	A	404	6/6	0.92	0.12	29,39,59,62	0
4	GOL	A	405	4/6	0.92	0.30	39,41,41,56	0
3	SO4	B	409	5/5	0.93	0.12	33,34,42,53	5
4	GOL	A	403	6/6	0.93	0.21	41,41,43,44	0
3	SO4	A	401	5/5	0.93	0.10	26,40,49,54	5
3	SO4	B	401	5/5	0.93	0.11	31,42,51,60	5
4	GOL	D	411	4/6	0.93	0.10	28,38,44,54	0
4	GOL	E	402	6/6	0.94	0.19	31,33,38,40	6
3	SO4	D	409	5/5	0.94	0.12	26,35,36,38	5
3	SO4	C	409	5/5	0.94	0.14	28,38,41,41	5
4	GOL	B	410	4/6	0.95	0.17	28,29,34,45	0
3	SO4	E	401	5/5	0.95	0.12	25,33,43,48	5
3	SO4	D	403	5/5	0.95	0.14	24,37,42,57	5
3	SO4	E	410	5/5	0.95	0.11	19,25,36,39	5
4	GOL	E	403	4/6	0.96	0.13	20,21,32,40	0
3	SO4	D	410	5/5	0.97	0.10	20,28,36,40	5
4	GOL	C	403	4/6	0.97	0.21	25,28,42,50	0
4	GOL	A	413	4/6	0.97	0.14	19,19,38,41	0
4	GOL	D	401	4/6	0.97	0.13	20,23,36,37	0
3	SO4	C	410	5/5	0.97	0.19	35,38,53,54	0

6.5 Other polymers [i](#)

There are no such residues in this entry.