



# Full wwPDB X-ray Structure Validation Report ⓘ

Nov 9, 2020 – 02:16 PM JST

PDB ID : 7CQN  
Title : GmaS in complex with AMPPCP  
Authors : Li, C.Y.; Zhang, Y.Z.  
Deposited on : 2020-08-11  
Resolution : 1.96 Å(reported)

This is a Full wwPDB X-ray Structure Validation Report for a publicly released PDB entry.

We welcome your comments at [validation@mail.wwpdb.org](mailto:validation@mail.wwpdb.org)

A user guide is available at

<https://www.wwpdb.org/validation/2017/XrayValidationReportHelp>

with specific help available everywhere you see the ⓘ symbol.

---

The following versions of software and data (see [references ⓘ](#)) were used in the production of this report:

MolProbity : 4.02b-467  
Mogul : 1.8.5 (274361), CSD as541be (2020)  
Xtriage (Phenix) : 1.13  
EDS : 2.14.6  
buster-report : 1.1.7 (2018)  
Percentile statistics : 20191225.v01 (using entries in the PDB archive December 25th 2019)  
Refmac : 5.8.0158  
CCP4 : 7.0.044 (Gargrove)  
Ideal geometry (proteins) : Engh & Huber (2001)  
Ideal geometry (DNA, RNA) : Parkinson et al. (1996)  
Validation Pipeline (wwPDB-VP) : 2.14.6

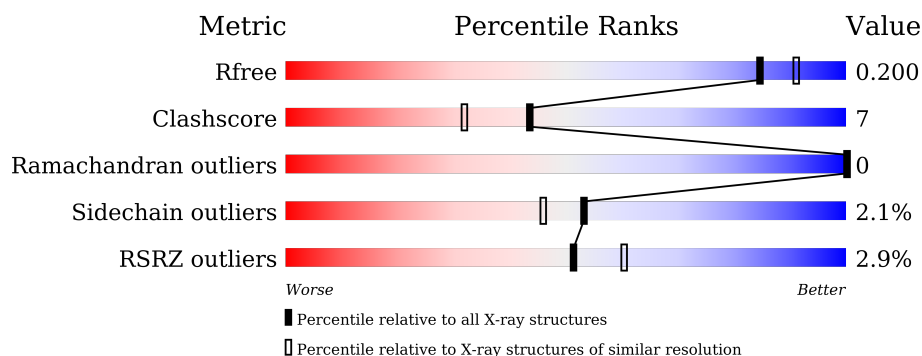
# 1 Overall quality at a glance

The following experimental techniques were used to determine the structure:

*X-RAY DIFFRACTION*

The reported resolution of this entry is 1.96 Å.

Percentile scores (ranging between 0-100) for global validation metrics of the entry are shown in the following graphic. The table shows the number of entries on which the scores are based.



Metric	Whole archive (#Entries)	Similar resolution (#Entries, resolution range(Å))
$R_{free}$	130704	2580 (1.96-1.96)
Clashscore	141614	2705 (1.96-1.96)
Ramachandran outliers	138981	2678 (1.96-1.96)
Sidechain outliers	138945	2678 (1.96-1.96)
RSRZ outliers	127900	2539 (1.96-1.96)

The table below summarises the geometric issues observed across the polymeric chains and their fit to the electron density. The red, orange, yellow and green segments on the lower bar indicate the fraction of residues that contain outliers for  $\geq 3$ , 2, 1 and 0 types of geometric quality criteria respectively. A grey segment represents the fraction of residues that are not modelled. The numeric value for each fraction is indicated below the corresponding segment, with a dot representing fractions  $\leq 5\%$ . The upper red bar (where present) indicates the fraction of residues that have poor fit to the electron density. The numeric value is given above the bar.

Mol	Chain	Length	Quality of chain
1	A	450	<div> <div>3%</div> <div> <div></div> <div>86%</div> <div>9%</div> <div>5%</div> </div> </div>
1	B	450	<div> <div>2%</div> <div> <div></div> <div>84%</div> <div>11%</div> <div>5%</div> </div> </div>
1	C	450	<div> <div>3%</div> <div> <div></div> <div>85%</div> <div>9%</div> <div>5%</div> </div> </div>

The following table lists non-polymeric compounds, carbohydrate monomers and non-standard residues in protein, DNA, RNA chains that are outliers for geometric or electron-density-fit criteria:

Mol	Type	Chain	Res	Chirality	Geometry	Clashes	Electron density
2	ACP	B	501[A]	-	-	X	-

## 2 Entry composition

There are 3 unique types of molecules in this entry. The entry contains 11652 atoms, of which 0 are hydrogens and 0 are deuteriums.

In the tables below, the ZeroOcc column contains the number of atoms modelled with zero occupancy, the AltConf column contains the number of residues with at least one atom in alternate conformation and the Trace column contains the number of residues modelled with at most 2 atoms.

- Molecule 1 is a protein called Type III glutamate–ammonia ligase.

Mol	Chain	Residues	Atoms					ZeroOcc	AltConf	Trace
1	A	429	Total	C	N	O	S	0	1	0
			3286	2088	567	614	17			
1	B	429	Total	C	N	O	S	0	1	0
			3285	2087	567	614	17			
1	C	429	Total	C	N	O	S	0	0	0
			3277	2083	566	611	17			

There are 60 discrepancies between the modelled and reference sequences:

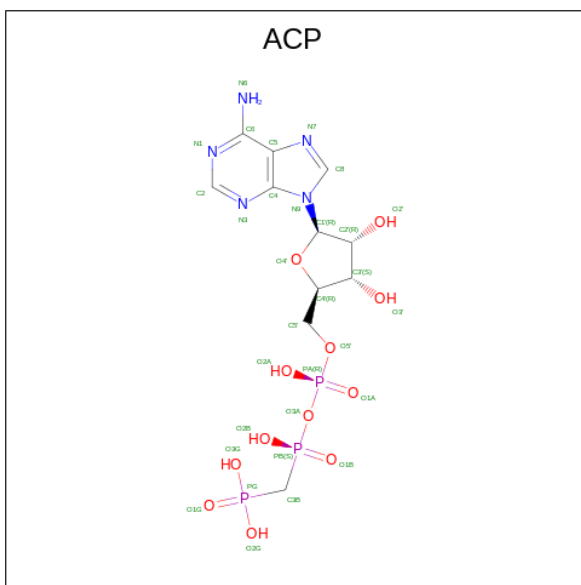
Chain	Residue	Modelled	Actual	Comment	Reference
A	-19	MET	-	initiating methionine	UNP A0A369R1N0
A	-18	GLY	-	expression tag	UNP A0A369R1N0
A	-17	SER	-	expression tag	UNP A0A369R1N0
A	-16	SER	-	expression tag	UNP A0A369R1N0
A	-15	HIS	-	expression tag	UNP A0A369R1N0
A	-14	HIS	-	expression tag	UNP A0A369R1N0
A	-13	HIS	-	expression tag	UNP A0A369R1N0
A	-12	HIS	-	expression tag	UNP A0A369R1N0
A	-11	HIS	-	expression tag	UNP A0A369R1N0
A	-10	HIS	-	expression tag	UNP A0A369R1N0
A	-9	SER	-	expression tag	UNP A0A369R1N0
A	-8	SER	-	expression tag	UNP A0A369R1N0
A	-7	GLY	-	expression tag	UNP A0A369R1N0
A	-6	LEU	-	expression tag	UNP A0A369R1N0
A	-5	VAL	-	expression tag	UNP A0A369R1N0
A	-4	PRO	-	expression tag	UNP A0A369R1N0
A	-3	ARG	-	expression tag	UNP A0A369R1N0
A	-2	GLY	-	expression tag	UNP A0A369R1N0
A	-1	SER	-	expression tag	UNP A0A369R1N0
A	0	HIS	-	expression tag	UNP A0A369R1N0
B	-19	MET	-	initiating methionine	UNP A0A369R1N0
B	-18	GLY	-	expression tag	UNP A0A369R1N0
B	-17	SER	-	expression tag	UNP A0A369R1N0

*Continued on next page...*

*Continued from previous page...*

Chain	Residue	Modelled	Actual	Comment	Reference
B	-16	SER	-	expression tag	UNP A0A369R1N0
B	-15	HIS	-	expression tag	UNP A0A369R1N0
B	-14	HIS	-	expression tag	UNP A0A369R1N0
B	-13	HIS	-	expression tag	UNP A0A369R1N0
B	-12	HIS	-	expression tag	UNP A0A369R1N0
B	-11	HIS	-	expression tag	UNP A0A369R1N0
B	-10	HIS	-	expression tag	UNP A0A369R1N0
B	-9	SER	-	expression tag	UNP A0A369R1N0
B	-8	SER	-	expression tag	UNP A0A369R1N0
B	-7	GLY	-	expression tag	UNP A0A369R1N0
B	-6	LEU	-	expression tag	UNP A0A369R1N0
B	-5	VAL	-	expression tag	UNP A0A369R1N0
B	-4	PRO	-	expression tag	UNP A0A369R1N0
B	-3	ARG	-	expression tag	UNP A0A369R1N0
B	-2	GLY	-	expression tag	UNP A0A369R1N0
B	-1	SER	-	expression tag	UNP A0A369R1N0
B	0	HIS	-	expression tag	UNP A0A369R1N0
C	-19	MET	-	initiating methionine	UNP A0A369R1N0
C	-18	GLY	-	expression tag	UNP A0A369R1N0
C	-17	SER	-	expression tag	UNP A0A369R1N0
C	-16	SER	-	expression tag	UNP A0A369R1N0
C	-15	HIS	-	expression tag	UNP A0A369R1N0
C	-14	HIS	-	expression tag	UNP A0A369R1N0
C	-13	HIS	-	expression tag	UNP A0A369R1N0
C	-12	HIS	-	expression tag	UNP A0A369R1N0
C	-11	HIS	-	expression tag	UNP A0A369R1N0
C	-10	HIS	-	expression tag	UNP A0A369R1N0
C	-9	SER	-	expression tag	UNP A0A369R1N0
C	-8	SER	-	expression tag	UNP A0A369R1N0
C	-7	GLY	-	expression tag	UNP A0A369R1N0
C	-6	LEU	-	expression tag	UNP A0A369R1N0
C	-5	VAL	-	expression tag	UNP A0A369R1N0
C	-4	PRO	-	expression tag	UNP A0A369R1N0
C	-3	ARG	-	expression tag	UNP A0A369R1N0
C	-2	GLY	-	expression tag	UNP A0A369R1N0
C	-1	SER	-	expression tag	UNP A0A369R1N0
C	0	HIS	-	expression tag	UNP A0A369R1N0

- Molecule 2 is PHOSPHOMETHYLPHOSPHONIC ACID ADENYLATE ESTER (three-letter code: ACP) (formula:  $C_{11}H_{18}N_5O_{12}P_3$ ) (labeled as "Ligand of Interest" by author).



Mol	Chain	Residues	Atoms				ZeroOcc	AltConf	
2	A	1	Total 62	C 22	N 10	O 24	P 6	0	1
2	B	1	Total 62	C 22	N 10	O 24	P 6	0	1
2	C	1	Total 62	C 22	N 10	O 24	P 6	0	1

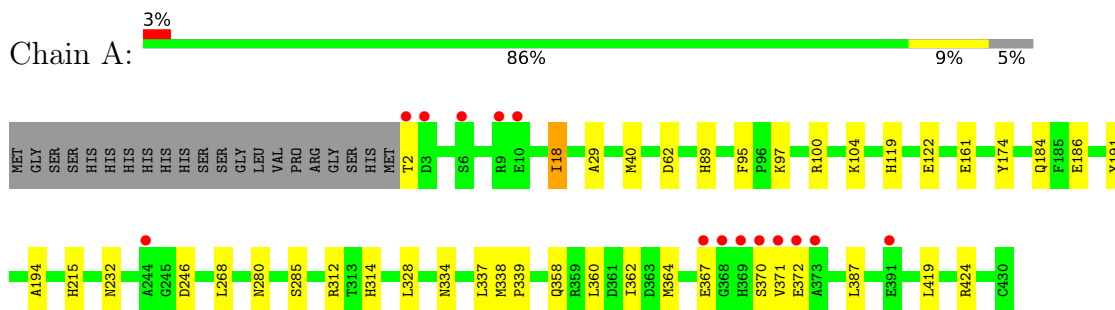
- Molecule 3 is water.

Mol	Chain	Residues	Atoms	ZeroOcc	AltConf
3	A	538	Total O 538 538	0	0
3	B	576	Total O 576 576	0	0
3	C	504	Total O 504 504	0	0

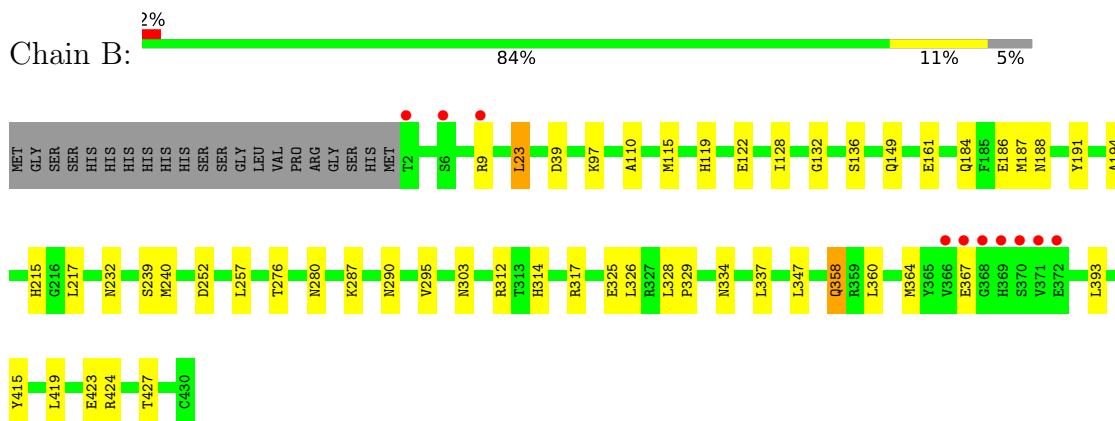
### 3 Residue-property plots [i](#)

These plots are drawn for all protein, RNA, DNA and oligosaccharide chains in the entry. The first graphic for a chain summarises the proportions of the various outlier classes displayed in the second graphic. The second graphic shows the sequence view annotated by issues in geometry and electron density. Residues are color-coded according to the number of geometric quality criteria for which they contain at least one outlier: green = 0, yellow = 1, orange = 2 and red = 3 or more. A red dot above a residue indicates a poor fit to the electron density ( $RSRZ > 2$ ). Stretches of 2 or more consecutive residues without any outlier are shown as a green connector. Residues present in the sample, but not in the model, are shown in grey.

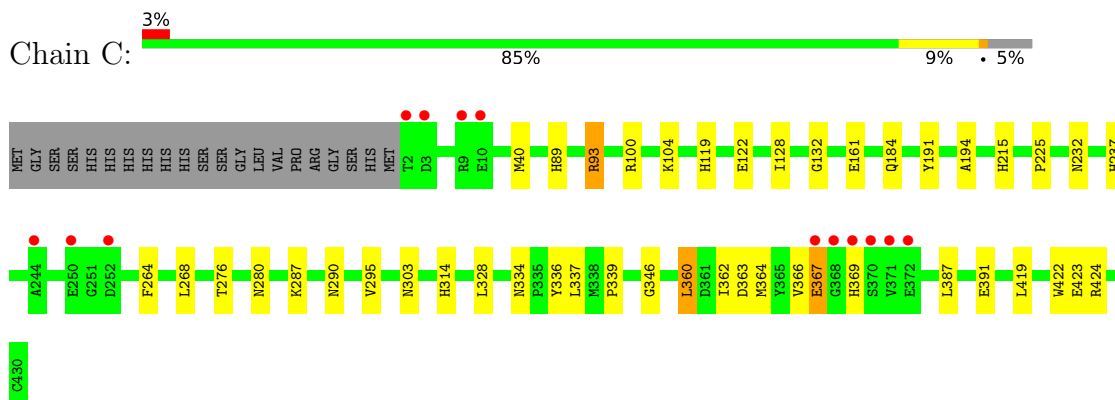
- Molecule 1: Type III glutamate–ammonia ligase



- Molecule 1: Type III glutamate–ammonia ligase



- Molecule 1: Type III glutamate–ammonia ligase



## 4 Data and refinement statistics

Property	Value	Source
Space group	I 2 2 2	Depositor
Cell constants a, b, c, $\alpha$ , $\beta$ , $\gamma$	110.92Å 176.70Å 191.83Å 90.00° 90.00° 90.00°	Depositor
Resolution (Å)	37.49 – 1.96 47.96 – 1.96	Depositor EDS
% Data completeness (in resolution range)	92.2 (37.49-1.96) 97.9 (47.96-1.96)	Depositor EDS
$R_{merge}$	0.08	Depositor
$R_{sym}$	(Not available)	Depositor
$\langle I/\sigma(I) \rangle$ <sup>1</sup>	1.90 (at 1.97Å)	Xtriage
Refinement program	PHENIX 1.6.4_486	Depositor
R, $R_{free}$	0.167 , 0.199 0.170 , 0.200	Depositor DCC
$R_{free}$ test set	6616 reflections (5.04%)	wwPDB-VP
Wilson B-factor (Å <sup>2</sup> )	16.1	Xtriage
Anisotropy	0.455	Xtriage
Bulk solvent $k_{sol}$ (e/Å <sup>3</sup> ), $B_{sol}$ (Å <sup>2</sup> )	0.35 , 49.2	EDS
L-test for twinning <sup>2</sup>	$\langle  L  \rangle = 0.50$ , $\langle L^2 \rangle = 0.33$	Xtriage
Estimated twinning fraction	No twinning to report.	Xtriage
$F_o, F_c$ correlation	0.95	EDS
Total number of atoms	11652	wwPDB-VP
Average B, all atoms (Å <sup>2</sup> )	18.0	wwPDB-VP

Xtriage's analysis on translational NCS is as follows: *The largest off-origin peak in the Patterson function is 4.33% of the height of the origin peak. No significant pseudotranslation is detected.*

<sup>1</sup>Intensities estimated from amplitudes.

<sup>2</sup>Theoretical values of  $\langle |L| \rangle$ ,  $\langle L^2 \rangle$  for acentric reflections are 0.5, 0.333 respectively for untwinned datasets, and 0.375, 0.2 for perfectly twinned datasets.



## 5 Model quality

### 5.1 Standard geometry

Bond lengths and bond angles in the following residue types are not validated in this section: ACP

The Z score for a bond length (or angle) is the number of standard deviations the observed value is removed from the expected value. A bond length (or angle) with  $|Z| > 5$  is considered an outlier worth inspection. RMSZ is the root-mean-square of all Z scores of the bond lengths (or angles).

Mol	Chain	Bond lengths		Bond angles	
		RMSZ	# Z  >5	RMSZ	# Z  >5
1	A	0.37	0/3370	0.50	0/4586
1	B	0.36	0/3369	0.52	0/4585
1	C	0.35	0/3361	0.52	0/4574
All	All	0.36	0/10100	0.51	0/13745

There are no bond length outliers.

There are no bond angle outliers.

There are no chirality outliers.

There are no planarity outliers.

### 5.2 Too-close contacts

In the following table, the Non-H and H(model) columns list the number of non-hydrogen atoms and hydrogen atoms in the chain respectively. The H(added) column lists the number of hydrogen atoms added and optimized by MolProbity. The Clashes column lists the number of clashes within the asymmetric unit, whereas Symm-Clashes lists symmetry related clashes.

Mol	Chain	Non-H	H(model)	H(added)	Clashes	Symm-Clashes
1	A	3286	0	3188	34	0
1	B	3285	0	3186	47	0
1	C	3277	0	3183	38	0
2	A	62	0	28	11	0
2	B	62	0	28	12	0
2	C	62	0	28	7	0
3	A	538	0	0	9	3
3	B	576	0	0	22	3
3	C	504	0	0	8	2
All	All	11652	0	9641	132	5

The all-atom clashscore is defined as the number of clashes found per 1000 atoms (including hydrogen atoms). The all-atom clashscore for this structure is 7.

All (132) close contacts within the same asymmetric unit are listed below, sorted by their clash magnitude.

Atom-1	Atom-2	Interatomic distance (Å)	Clash overlap (Å)
1:A:314:HIS:CE1	1:A:364:MET:HE3	1.89	1.08
1:B:314:HIS:CE1	1:B:364:MET:HE3	1.92	1.03
1:A:186[B]:GLU:OE1	3:A:601:HOH:O	1.82	0.97
1:C:314:HIS:CE1	1:C:364:MET:HE3	2.00	0.96
1:B:314:HIS:HE1	1:B:364:MET:HE3	1.35	0.89
2:B:501[A]:ACP:H3B1	3:B:602:HOH:O	1.74	0.87
1:A:314:HIS:CE1	1:A:364:MET:CE	2.61	0.84
1:A:362:ILE:HD12	1:A:367:GLU:O	1.80	0.81
1:C:424:ARG:HD3	3:C:605:HOH:O	1.80	0.81
1:B:186:GLU:OE1	3:B:601:HOH:O	2.01	0.79
2:B:501[A]:ACP:PG	3:B:602:HOH:O	2.39	0.79
2:B:501[A]:ACP:C3B	3:B:602:HOH:O	2.31	0.78
1:B:358:GLN:NE2	3:B:603:HOH:O	2.15	0.76
1:C:314:HIS:HE1	1:C:364:MET:HE3	1.49	0.75
2:A:501[B]:ACP:H3B1	2:A:501[B]:ACP:O2A	1.87	0.73
1:B:314:HIS:HE1	1:B:364:MET:CE	2.03	0.71
2:B:501[A]:ACP:PG	3:B:609:HOH:O	2.48	0.71
2:B:501[A]:ACP:O2G	3:B:602:HOH:O	2.10	0.70
1:B:314:HIS:CE1	1:B:364:MET:CE	2.72	0.70
2:B:501[A]:ACP:O2A	2:B:501[A]:ACP:H3B1	1.92	0.68
2:C:501[A]:ACP:O2A	2:C:501[A]:ACP:H3B1	1.92	0.68
1:C:334:ASN:HB3	1:C:337:LEU:HB2	1.77	0.67
1:A:314:HIS:HE1	1:A:364:MET:CE	2.04	0.67
1:C:314:HIS:CE1	1:C:364:MET:CE	2.78	0.67
1:C:314:HIS:HE1	1:C:364:MET:CE	2.07	0.66
1:B:9:ARG:NH1	3:B:606:HOH:O	2.29	0.65
1:A:246:ASP:OD2	3:A:602:HOH:O	2.13	0.65
1:B:334:ASN:HB3	1:B:337:LEU:HB2	1.79	0.63
1:A:334:ASN:HB3	1:A:337:LEU:HB2	1.80	0.63
1:B:39:ASP:HB2	3:B:1047:HOH:O	1.99	0.62
1:C:362:ILE:HD12	1:C:367:GLU:HB3	1.81	0.62
1:B:184:GLN:HE21	1:B:232:ASN:HD22	1.48	0.61
1:C:161:GLU:OE1	1:C:215:HIS:HE1	1.84	0.61
1:B:186:GLU:HG2	3:B:610:HOH:O	2.01	0.61
2:B:501[A]:ACP:H3B2	3:B:609:HOH:O	1.99	0.60
1:B:184:GLN:HE21	1:B:232:ASN:ND2	1.98	0.60
1:B:423:GLU:OE2	1:C:287:LYS:HE2	2.01	0.60

*Continued on next page...*

*Continued from previous page...*

Atom-1	Atom-2	Interatomic distance (Å)	Clash overlap (Å)
1:C:280:ASN:HD21	1:C:328:LEU:HG	1.66	0.60
1:A:40:MET:SD	3:B:980:HOH:O	2.55	0.60
1:B:122:GLU:HB3	1:B:186:GLU:OE2	2.00	0.60
1:B:252:ASP:OD1	3:B:604:HOH:O	2.17	0.60
1:C:184:GLN:HE21	1:C:232:ASN:HD22	1.47	0.59
1:B:215:HIS:HD2	3:B:1042:HOH:O	1.84	0.59
1:C:93:ARG:NH2	3:C:603:HOH:O	2.28	0.59
1:A:2:THR:HA	3:A:663:HOH:O	2.02	0.59
1:A:280:ASN:HD21	1:A:328:LEU:HG	1.68	0.59
1:A:312:ARG:NH1	3:A:603:HOH:O	2.20	0.58
1:B:97:LYS:HE2	3:B:781:HOH:O	2.04	0.58
2:C:501[B]:ACP:O2A	2:C:501[B]:ACP:H3B2	2.04	0.57
2:A:501[A]:ACP:H3B2	2:A:501[A]:ACP:O2A	2.06	0.56
2:A:501[B]:ACP:PG	3:A:612:HOH:O	2.64	0.56
1:A:122:GLU:HB3	1:A:186[B]:GLU:OE2	2.07	0.55
1:C:184:GLN:HE21	1:C:232:ASN:ND2	2.03	0.55
1:B:110:ALA:HB2	1:B:347:LEU:HD11	1.90	0.54
1:B:191:TYR:HB3	2:B:501[A]:ACP:H1'	1.88	0.54
1:B:280:ASN:HD21	1:B:328:LEU:HG	1.73	0.54
1:A:119:HIS:HD2	1:A:194:ALA:HA	1.73	0.53
2:A:501[B]:ACP:H3B2	3:A:612:HOH:O	2.09	0.52
1:A:119:HIS:CD2	1:A:194:ALA:HA	2.44	0.52
2:C:501[A]:ACP:H3B2	3:C:622:HOH:O	2.09	0.52
1:B:287:LYS:HE2	1:C:423:GLU:OE2	2.10	0.52
1:A:89:HIS:HE1	3:A:774:HOH:O	1.93	0.51
1:B:119:HIS:CD2	1:B:194:ALA:HA	2.45	0.51
1:B:161:GLU:OE1	1:B:215:HIS:HE1	1.93	0.51
1:A:191:TYR:HB3	2:A:501[B]:ACP:H1'	1.92	0.51
1:C:93:ARG:HD3	3:C:867:HOH:O	2.10	0.51
2:B:501[A]:ACP:C3B	3:B:609:HOH:O	2.59	0.51
1:A:314:HIS:HE1	1:A:364:MET:HE1	1.75	0.51
1:C:295:VAL:CG2	3:C:693:HOH:O	2.58	0.51
1:B:314:HIS:HB2	3:B:642:HOH:O	2.11	0.50
1:B:119:HIS:HD2	1:B:194:ALA:HA	1.77	0.50
1:A:161:GLU:OE1	1:A:215:HIS:HE1	1.95	0.49
1:C:336:TYR:O	1:C:339:PRO:HD2	2.12	0.49
1:C:362:ILE:HD12	1:C:367:GLU:HG2	1.93	0.49
1:C:191:TYR:HB3	2:C:501[A]:ACP:H1'	1.94	0.49
2:B:501[B]:ACP:O2A	2:B:501[B]:ACP:H3B2	2.13	0.48
1:C:89:HIS:HE1	3:C:615:HOH:O	1.96	0.48
1:A:174:TYR:OH	2:A:501[B]:ACP:H3'	2.14	0.47

*Continued on next page...*

*Continued from previous page...*

Atom-1	Atom-2	Interatomic distance (Å)	Clash overlap (Å)
1:A:184:GLN:HE21	1:A:232:ASN:HD22	1.62	0.47
1:C:362:ILE:HD12	1:C:367:GLU:CB	2.45	0.47
1:C:363:ASP:O	1:C:367:GLU:HB2	2.13	0.47
1:C:295:VAL:HG23	3:C:693:HOH:O	2.15	0.47
1:B:415:TYR:HB2	1:C:422:TRP:CZ3	2.50	0.46
1:C:290:ASN:HA	1:C:303:ASN:OD1	2.15	0.46
2:C:501[A]:ACP:PG	3:C:622:HOH:O	2.73	0.46
1:C:119:HIS:HD2	1:C:194:ALA:HA	1.81	0.46
1:C:119:HIS:CD2	1:C:194:ALA:HA	2.51	0.46
1:B:252:ASP:HB2	3:B:1019:HOH:O	2.15	0.46
1:B:276:THR:HG23	1:B:280:ASN:HD22	1.80	0.46
1:A:95:PHE:CE2	1:A:97:LYS:HB2	2.50	0.45
1:B:295:VAL:HG23	3:B:779:HOH:O	2.15	0.45
1:C:119:HIS:HA	1:C:237:HIS:O	2.17	0.45
2:A:501[A]:ACP:H8	3:A:849:HOH:O	2.16	0.45
1:C:128:ILE:HD12	1:C:132:GLY:HA2	1.99	0.44
1:B:393:LEU:HA	1:B:393:LEU:HD23	1.82	0.44
1:A:122:GLU:OE1	1:A:186[B]:GLU:OE2	2.35	0.44
1:A:29:ALA:HB2	1:B:149:GLN:HE21	1.83	0.44
1:B:239:SER:OG	2:B:501[A]:ACP:N1	2.45	0.44
1:B:424:ARG:NH1	1:C:225:PRO:O	2.42	0.44
1:A:100:ARG:O	1:A:104:LYS:HG3	2.19	0.43
1:B:326:LEU:HG	1:B:329:PRO:HD3	1.99	0.43
1:A:371:VAL:HG22	1:A:372:GLU:N	2.33	0.43
1:A:62:ASP:OD1	1:B:312:ARG:NH1	2.51	0.43
1:A:338:MET:HB3	1:A:339:PRO:HD3	2.00	0.43
1:B:187:MET:HE2	1:B:187:MET:HB3	1.94	0.43
1:B:122:GLU:OE1	2:B:501[B]:ACP:O1G	2.37	0.43
1:A:174:TYR:OH	2:A:501[A]:ACP:H3'	2.19	0.42
1:B:115:MET:HB3	1:B:240:MET:HE2	2.01	0.42
1:B:119:HIS:HE1	3:B:772:HOH:O	2.02	0.42
1:C:40:MET:HA	1:C:40:MET:CE	2.50	0.42
1:A:122:GLU:OE1	2:A:501[A]:ACP:O1G	2.38	0.42
1:B:23:LEU:HD12	1:B:337:LEU:HD11	2.01	0.42
1:C:264:PHE:CE2	1:C:346:GLY:HA3	2.54	0.42
1:A:191:TYR:HB3	2:A:501[A]:ACP:H1'	2.01	0.42
1:B:115:MET:HB3	1:B:240:MET:CE	2.49	0.42
1:C:360:LEU:HD23	1:C:364:MET:HE1	2.02	0.42
1:B:136:SER:HB2	1:B:217:LEU:HD22	2.02	0.42
1:C:191:TYR:HB3	2:C:501[B]:ACP:H1'	2.01	0.42
1:C:100:ARG:O	1:C:104:LYS:HG3	2.20	0.41

*Continued on next page...*

Continued from previous page...

Atom-1	Atom-2	Interatomic distance (Å)	Clash overlap (Å)
1:B:128:ILE:HD12	1:B:132:GLY:HA2	2.02	0.41
1:C:122:GLU:OE1	2:C:501[B]:ACP:O1G	2.38	0.41
1:A:184:GLN:HE21	1:A:232:ASN:ND2	2.18	0.41
1:A:18:ILE:CD1	1:A:18:ILE:N	2.83	0.41
1:A:280:ASN:HB3	1:A:285:SER:HB3	2.02	0.41
1:B:317:ARG:HD3	1:B:325:GLU:OE1	2.21	0.41
2:A:501[B]:ACP:H3B2	3:A:630:HOH:O	2.21	0.41
1:B:188:ASN:ND2	3:B:610:HOH:O	2.54	0.41
1:B:290:ASN:HA	1:B:303:ASN:OD1	2.21	0.41
1:C:366:VAL:O	1:C:369:HIS:HE1	2.04	0.40
1:A:424:ARG:NH1	1:A:424:ARG:HG2	2.36	0.40
1:B:295:VAL:HG21	3:B:1113:HOH:O	2.21	0.40
1:C:276:THR:HG23	1:C:280:ASN:HD22	1.86	0.40

All (5) symmetry-related close contacts are listed below. The label for Atom-2 includes the symmetry operator and encoded unit-cell translations to be applied.

Atom-1	Atom-2	Interatomic distance (Å)	Clash overlap (Å)
3:A:728:HOH:O	3:A:824:HOH:O[2_455]	2.04	0.16
3:A:681:HOH:O	3:A:935:HOH:O[2_455]	2.07	0.13
3:A:883:HOH:O	3:B:967:HOH:O[2_455]	2.10	0.10
3:B:1088:HOH:O	3:C:976:HOH:O[3_456]	2.11	0.09
3:B:1019:HOH:O	3:C:1094:HOH:O[8_545]	2.12	0.08

## 5.3 Torsion angles [i](#)

### 5.3.1 Protein backbone [i](#)

In the following table, the Percentiles column shows the percent Ramachandran outliers of the chain as a percentile score with respect to all X-ray entries followed by that with respect to entries of similar resolution.

The Analysed column shows the number of residues for which the backbone conformation was analysed, and the total number of residues.

Mol	Chain	Analysed	Favoured	Allowed	Outliers	Percentiles	
1	A	428/450 (95%)	423 (99%)	5 (1%)	0	100	100
1	B	428/450 (95%)	421 (98%)	7 (2%)	0	100	100
1	C	427/450 (95%)	421 (99%)	6 (1%)	0	100	100

Continued on next page...

*Continued from previous page...*

Mol	Chain	Analysed	Favoured	Allowed	Outliers	Percentiles	
All	All	1283/1350 (95%)	1265 (99%)	18 (1%)	0	100	100

There are no Ramachandran outliers to report.

### 5.3.2 Protein sidechains ⓘ

In the following table, the Percentiles column shows the percent sidechain outliers of the chain as a percentile score with respect to all X-ray entries followed by that with respect to entries of similar resolution.

The Analysed column shows the number of residues for which the sidechain conformation was analysed, and the total number of residues.

Mol	Chain	Analysed	Rotameric	Outliers	Percentiles	
1	A	331/348 (95%)	324 (98%)	7 (2%)	53	46
1	B	331/348 (95%)	324 (98%)	7 (2%)	53	46
1	C	330/348 (95%)	323 (98%)	7 (2%)	53	46
All	All	992/1044 (95%)	971 (98%)	21 (2%)	53	46

All (21) residues with a non-rotameric sidechain are listed below:

Mol	Chain	Res	Type
1	A	18	ILE
1	A	268	LEU
1	A	358	GLN
1	A	360	LEU
1	A	370	SER
1	A	387	LEU
1	A	419	LEU
1	B	23	LEU
1	B	257	LEU
1	B	358	GLN
1	B	360	LEU
1	B	367	GLU
1	B	419	LEU
1	B	427	THR
1	C	93	ARG
1	C	268	LEU
1	C	360	LEU
1	C	367	GLU

*Continued on next page...*

*Continued from previous page...*

Mol	Chain	Res	Type
1	C	387	LEU
1	C	391	GLU
1	C	419	LEU

Some sidechains can be flipped to improve hydrogen bonding and reduce clashes. All (27) such sidechains are listed below:

Mol	Chain	Res	Type
1	A	89	HIS
1	A	119	HIS
1	A	142	GLN
1	A	182	ASN
1	A	215	HIS
1	A	232	ASN
1	A	280	ASN
1	A	290	ASN
1	A	314	HIS
1	A	358	GLN
1	B	89	HIS
1	B	119	HIS
1	B	142	GLN
1	B	149	GLN
1	B	182	ASN
1	B	215	HIS
1	B	232	ASN
1	B	280	ASN
1	B	358	GLN
1	B	369	HIS
1	C	89	HIS
1	C	119	HIS
1	C	182	ASN
1	C	215	HIS
1	C	232	ASN
1	C	280	ASN
1	C	358	GLN

### 5.3.3 RNA ⓘ

There are no RNA molecules in this entry.

## 5.4 Non-standard residues in protein, DNA, RNA chains [i](#)

There are no non-standard protein/DNA/RNA residues in this entry.

## 5.5 Carbohydrates [i](#)

There are no monosaccharides in this entry.

## 5.6 Ligand geometry [i](#)

6 ligands are modelled in this entry.

In the following table, the Counts columns list the number of bonds (or angles) for which Mogul statistics could be retrieved, the number of bonds (or angles) that are observed in the model and the number of bonds (or angles) that are defined in the Chemical Component Dictionary. The Link column lists molecule types, if any, to which the group is linked. The Z score for a bond length (or angle) is the number of standard deviations the observed value is removed from the expected value. A bond length (or angle) with  $|Z| > 2$  is considered an outlier worth inspection. RMSZ is the root-mean-square of all Z scores of the bond lengths (or angles).

Mol	Type	Chain	Res	Link	Bond lengths			Bond angles		
					Counts	RMSZ	$\# Z  > 2$	Counts	RMSZ	$\# Z  > 2$
2	ACP	C	501[B]	-	27,33,33	1.87	10 (37%)	32,52,52	1.72	8 (25%)
2	ACP	B	501[B]	-	27,33,33	1.91	10 (37%)	32,52,52	1.77	9 (28%)
2	ACP	C	501[A]	-	27,33,33	1.89	10 (37%)	32,52,52	1.67	8 (25%)
2	ACP	A	501[A]	-	27,33,33	1.93	10 (37%)	32,52,52	1.74	8 (25%)
2	ACP	B	501[A]	-	27,33,33	1.92	11 (40%)	32,52,52	1.86	10 (31%)
2	ACP	A	501[B]	-	27,33,33	1.90	10 (37%)	32,52,52	1.83	11 (34%)

In the following table, the Chirals column lists the number of chiral outliers, the number of chiral centers analysed, the number of these observed in the model and the number defined in the Chemical Component Dictionary. Similar counts are reported in the Torsion and Rings columns. '-' means no outliers of that kind were identified.

Mol	Type	Chain	Res	Link	Chirals	Torsions	Rings
2	ACP	C	501[B]	-	-	2/15/38/38	0/3/3/3
2	ACP	B	501[B]	-	-	1/15/38/38	0/3/3/3
2	ACP	C	501[A]	-	-	3/15/38/38	0/3/3/3
2	ACP	A	501[A]	-	-	1/15/38/38	0/3/3/3
2	ACP	B	501[A]	-	-	3/15/38/38	0/3/3/3
2	ACP	A	501[B]	-	-	3/15/38/38	0/3/3/3



All (61) bond length outliers are listed below:

Mol	Chain	Res	Type	Atoms	Z	Observed(Å)	Ideal(Å)
2	A	501[A]	ACP	PB-O3A	4.63	1.63	1.58
2	B	501[B]	ACP	PB-O3A	4.46	1.63	1.58
2	B	501[A]	ACP	PB-O3A	4.37	1.63	1.58
2	C	501[B]	ACP	PB-O3A	4.20	1.63	1.58
2	A	501[B]	ACP	PB-O3A	3.99	1.62	1.58
2	C	501[A]	ACP	PB-O3A	3.84	1.62	1.58
2	C	501[B]	ACP	C6-N6	3.55	1.47	1.34
2	C	501[A]	ACP	C6-N6	3.54	1.47	1.34
2	A	501[B]	ACP	C6-N6	3.46	1.46	1.34
2	B	501[A]	ACP	C6-N6	3.43	1.46	1.34
2	A	501[A]	ACP	C6-N6	3.40	1.46	1.34
2	B	501[B]	ACP	C6-N6	3.39	1.46	1.34
2	C	501[B]	ACP	C2'-C1'	-3.28	1.48	1.53
2	B	501[B]	ACP	C2'-C1'	-3.24	1.48	1.53
2	C	501[A]	ACP	C2'-C1'	-3.22	1.48	1.53
2	B	501[A]	ACP	C2'-C1'	-3.17	1.49	1.53
2	A	501[B]	ACP	PG-O1G	3.12	1.56	1.50
2	A	501[A]	ACP	C2'-C1'	-3.11	1.49	1.53
2	A	501[B]	ACP	C2'-C1'	-3.10	1.49	1.53
2	A	501[A]	ACP	PG-O1G	3.01	1.56	1.50
2	B	501[A]	ACP	PG-O1G	2.99	1.56	1.50
2	B	501[A]	ACP	PB-O1B	2.95	1.58	1.51
2	C	501[A]	ACP	PB-O1B	2.93	1.58	1.51
2	B	501[B]	ACP	PG-O1G	2.92	1.56	1.50
2	C	501[A]	ACP	PG-O1G	2.92	1.56	1.50
2	A	501[A]	ACP	PG-O3G	-2.90	1.48	1.54
2	A	501[B]	ACP	PB-O1B	2.85	1.58	1.51
2	C	501[A]	ACP	C5'-C4'	-2.81	1.42	1.51
2	A	501[A]	ACP	C5'-C4'	-2.81	1.42	1.51
2	A	501[A]	ACP	PB-O1B	2.79	1.58	1.51
2	C	501[B]	ACP	PG-O3G	-2.79	1.48	1.54
2	A	501[B]	ACP	C5'-C4'	-2.78	1.42	1.51
2	B	501[B]	ACP	PG-O3G	-2.78	1.48	1.54
2	B	501[B]	ACP	C5'-C4'	-2.73	1.43	1.51
2	C	501[B]	ACP	C5'-C4'	-2.71	1.43	1.51
2	C	501[B]	ACP	PB-O1B	2.66	1.58	1.51
2	B	501[A]	ACP	C5'-C4'	-2.62	1.43	1.51
2	C	501[B]	ACP	PG-O1G	2.60	1.55	1.50
2	B	501[B]	ACP	PB-O1B	2.50	1.57	1.51
2	A	501[B]	ACP	PG-O3G	-2.46	1.49	1.54
2	A	501[B]	ACP	O3'-C3'	-2.39	1.37	1.43
2	B	501[B]	ACP	O2'-C2'	-2.39	1.37	1.43

*Continued on next page...*

*Continued from previous page...*

Mol	Chain	Res	Type	Atoms	Z	Observed(Å)	Ideal(Å)
2	C	501[A]	ACP	PG-O3G	-2.37	1.49	1.54
2	C	501[A]	ACP	O3'-C3'	-2.35	1.37	1.43
2	B	501[A]	ACP	O3'-C3'	-2.32	1.37	1.43
2	B	501[A]	ACP	O2'-C2'	-2.28	1.37	1.43
2	C	501[A]	ACP	C2'-C3'	-2.26	1.47	1.53
2	A	501[B]	ACP	C2'-C3'	-2.23	1.47	1.53
2	B	501[A]	ACP	C2'-C3'	-2.23	1.47	1.53
2	C	501[B]	ACP	O3'-C3'	-2.22	1.37	1.43
2	B	501[A]	ACP	PG-O3G	-2.20	1.49	1.54
2	A	501[A]	ACP	O2'-C2'	-2.20	1.37	1.43
2	A	501[B]	ACP	O2'-C2'	-2.17	1.37	1.43
2	C	501[A]	ACP	O2'-C2'	-2.17	1.37	1.43
2	C	501[B]	ACP	O2'-C2'	-2.14	1.37	1.43
2	B	501[B]	ACP	O3'-C3'	-2.12	1.38	1.43
2	B	501[B]	ACP	C2'-C3'	-2.11	1.47	1.53
2	A	501[A]	ACP	C2'-C3'	-2.08	1.47	1.53
2	A	501[A]	ACP	O3'-C3'	-2.06	1.38	1.43
2	C	501[B]	ACP	C2'-C3'	-2.05	1.47	1.53
2	B	501[A]	ACP	C3'-C4'	-2.02	1.47	1.53

All (54) bond angle outliers are listed below:

Mol	Chain	Res	Type	Atoms	Z	Observed(°)	Ideal(°)
2	B	501[B]	ACP	N3-C2-N1	-4.85	121.10	128.68
2	A	501[A]	ACP	N3-C2-N1	-4.80	121.17	128.68
2	B	501[A]	ACP	N3-C2-N1	-4.79	121.20	128.68
2	C	501[B]	ACP	N3-C2-N1	-4.75	121.25	128.68
2	A	501[B]	ACP	N3-C2-N1	-4.74	121.28	128.68
2	C	501[A]	ACP	N3-C2-N1	-4.71	121.31	128.68
2	B	501[B]	ACP	O1B-PB-C3B	-3.89	98.78	109.07
2	A	501[A]	ACP	O1B-PB-C3B	-3.86	98.87	109.07
2	C	501[B]	ACP	O1B-PB-C3B	-3.83	98.96	109.07
2	B	501[A]	ACP	O1B-PB-C3B	-3.45	99.96	109.07
2	B	501[A]	ACP	O1G-PG-C3B	-3.42	103.88	111.24
2	B	501[B]	ACP	O2B-PB-C3B	3.36	120.31	106.58
2	A	501[A]	ACP	O2B-PB-C3B	3.33	120.20	106.58
2	C	501[B]	ACP	O2B-PB-C3B	3.12	119.35	106.58
2	C	501[A]	ACP	O2B-PB-C3B	3.10	119.28	106.58
2	A	501[B]	ACP	O1B-PB-C3B	-3.06	100.97	109.07
2	A	501[B]	ACP	O2B-PB-C3B	2.98	118.78	106.58
2	A	501[B]	ACP	O2B-PB-O1B	2.96	119.96	110.07
2	C	501[A]	ACP	O2B-PB-O1B	2.95	119.91	110.07

*Continued on next page...*

*Continued from previous page...*

Mol	Chain	Res	Type	Atoms	Z	Observed(°)	Ideal(°)
2	B	501[A]	ACP	O2B-PB-C3B	2.92	118.54	106.58
2	C	501[A]	ACP	O1B-PB-C3B	-2.91	101.38	109.07
2	C	501[B]	ACP	O3G-PG-C3B	2.91	113.45	106.40
2	B	501[A]	ACP	O2G-PG-C3B	2.89	113.41	106.40
2	A	501[B]	ACP	O3G-PG-C3B	2.86	113.33	106.40
2	B	501[B]	ACP	O2G-PG-O1G	-2.85	104.85	112.39
2	B	501[B]	ACP	O3G-PG-C3B	2.85	113.30	106.40
2	C	501[B]	ACP	O2B-PB-O1B	2.79	119.37	110.07
2	A	501[B]	ACP	O1G-PG-C3B	-2.77	105.28	111.24
2	B	501[A]	ACP	O2B-PB-O1B	2.74	119.20	110.07
2	B	501[A]	ACP	O5'-C5'-C4'	2.67	118.19	108.99
2	A	501[A]	ACP	O3G-PG-C3B	2.67	112.88	106.40
2	A	501[A]	ACP	O2B-PB-O1B	2.64	118.88	110.07
2	B	501[A]	ACP	O3G-PG-C3B	2.51	112.50	106.40
2	B	501[B]	ACP	O2B-PB-O1B	2.48	118.36	110.07
2	A	501[B]	ACP	O2G-PG-O1G	-2.31	106.28	112.39
2	C	501[A]	ACP	O2G-PG-C3B	2.30	111.97	106.40
2	A	501[A]	ACP	C4-C5-N7	-2.28	107.02	109.40
2	C	501[A]	ACP	O5'-C5'-C4'	2.28	116.85	108.99
2	A	501[A]	ACP	O2G-PG-O1G	-2.27	106.39	112.39
2	B	501[B]	ACP	O5'-C5'-C4'	2.26	116.76	108.99
2	A	501[B]	ACP	O5'-C5'-C4'	2.25	116.74	108.99
2	A	501[B]	ACP	O2G-PG-C3B	2.24	111.83	106.40
2	C	501[A]	ACP	C1'-N9-C4	-2.23	122.72	126.64
2	A	501[B]	ACP	C4-C5-N7	-2.20	107.11	109.40
2	C	501[B]	ACP	O5'-C5'-C4'	2.17	116.45	108.99
2	A	501[B]	ACP	PA-O3A-PB	-2.16	125.71	132.56
2	C	501[A]	ACP	C4-C5-N7	-2.11	107.20	109.40
2	B	501[A]	ACP	C4-C5-N7	-2.10	107.21	109.40
2	A	501[A]	ACP	C1'-N9-C4	-2.10	122.95	126.64
2	B	501[B]	ACP	C1'-N9-C4	-2.09	122.97	126.64
2	B	501[A]	ACP	O2G-PG-O1G	-2.07	106.91	112.39
2	C	501[B]	ACP	C1'-N9-C4	-2.06	123.02	126.64
2	C	501[B]	ACP	C4-C5-N7	-2.05	107.26	109.40
2	B	501[B]	ACP	C4-C5-N7	-2.04	107.28	109.40

There are no chirality outliers.

All (13) torsion outliers are listed below:

Mol	Chain	Res	Type	Atoms
2	C	501[A]	ACP	PG-C3B-PB-O1B
2	C	501[A]	ACP	PG-C3B-PB-O2B

*Continued on next page...*

*Continued from previous page...*

Mol	Chain	Res	Type	Atoms
2	C	501[A]	ACP	PG-C3B-PB-O3A
2	B	501[A]	ACP	PG-C3B-PB-O1B
2	B	501[A]	ACP	PG-C3B-PB-O2B
2	B	501[A]	ACP	PG-C3B-PB-O3A
2	A	501[B]	ACP	PG-C3B-PB-O1B
2	A	501[B]	ACP	C5'-O5'-PA-O3A
2	A	501[B]	ACP	PG-C3B-PB-O2B
2	C	501[B]	ACP	PB-O3A-PA-O2A
2	C	501[B]	ACP	PB-C3B-PG-O1G
2	B	501[B]	ACP	PB-C3B-PG-O1G
2	A	501[A]	ACP	PB-C3B-PG-O1G

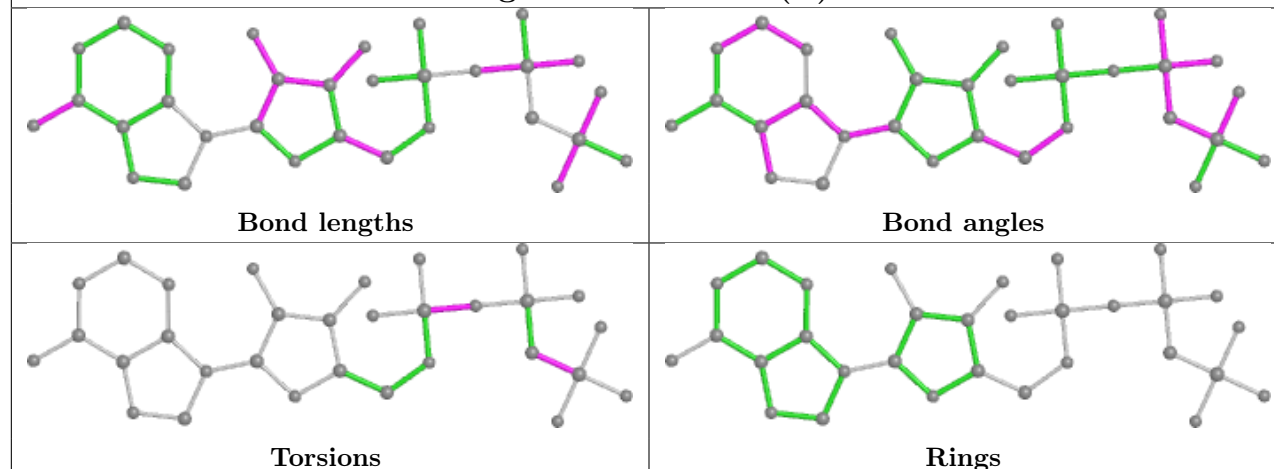
There are no ring outliers.

6 monomers are involved in 30 short contacts:

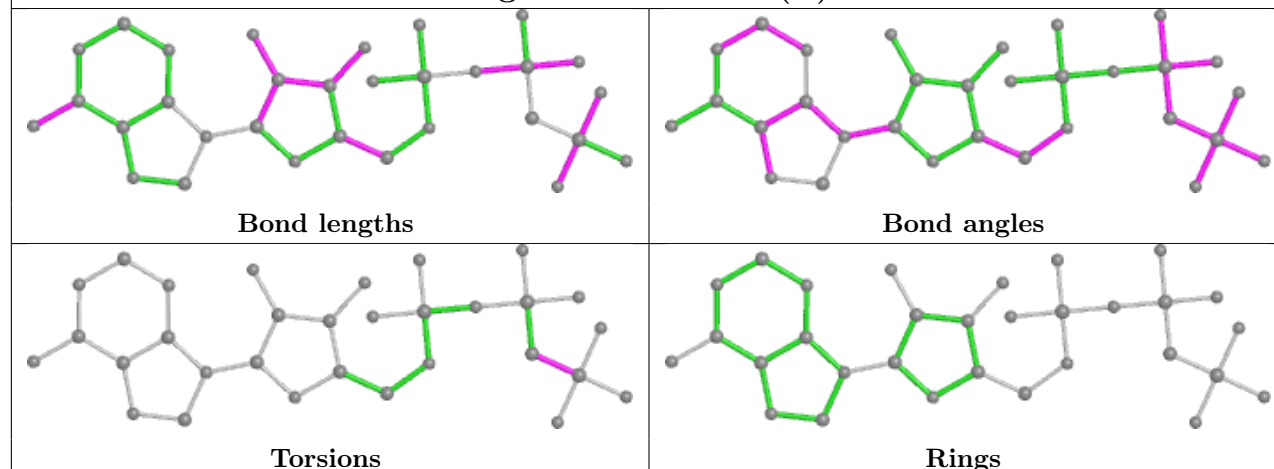
Mol	Chain	Res	Type	Clashes	Symm-Clashes
2	C	501[B]	ACP	3	0
2	B	501[B]	ACP	2	0
2	C	501[A]	ACP	4	0
2	A	501[A]	ACP	5	0
2	B	501[A]	ACP	10	0
2	A	501[B]	ACP	6	0

The following is a two-dimensional graphical depiction of Mogul quality analysis of bond lengths, bond angles, torsion angles, and ring geometry for all instances of the Ligand of Interest. In addition, ligands with molecular weight > 250 and outliers as shown on the validation Tables will also be included. For torsion angles, if less than 5% of the Mogul distribution of torsion angles is within 10 degrees of the torsion angle in question, then that torsion angle is considered an outlier. Any bond that is central to one or more torsion angles identified as an outlier by Mogul will be highlighted in the graph. For rings, the root-mean-square deviation (RMSD) between the ring in question and similar rings identified by Mogul is calculated over all ring torsion angles. If the average RMSD is greater than 60 degrees and the minimal RMSD between the ring in question and any Mogul-identified rings is also greater than 60 degrees, then that ring is considered an outlier. The outliers are highlighted in purple. The color gray indicates Mogul did not find sufficient equivalents in the CSD to analyse the geometry.

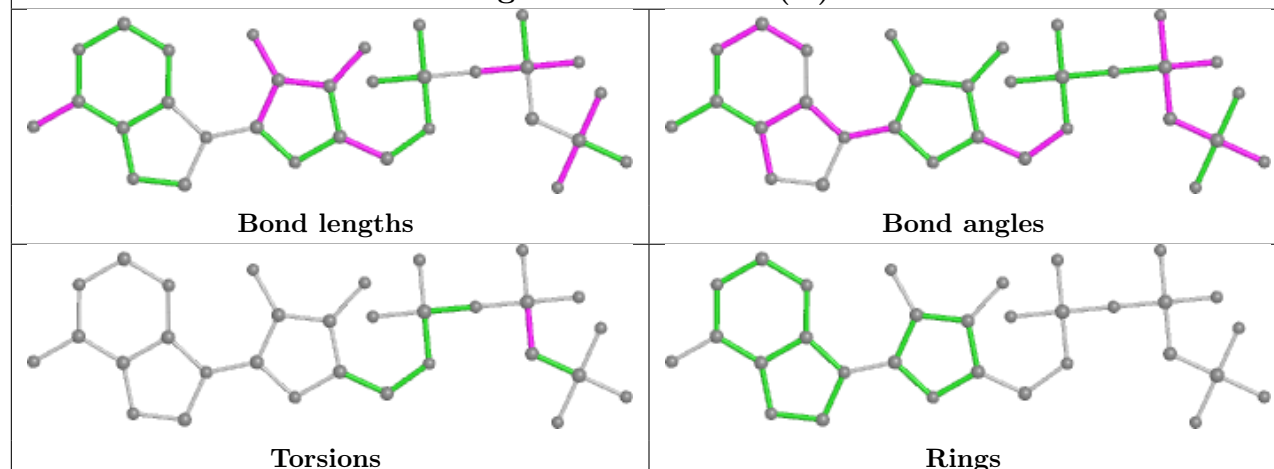
## Ligand ACP C 501 (B)

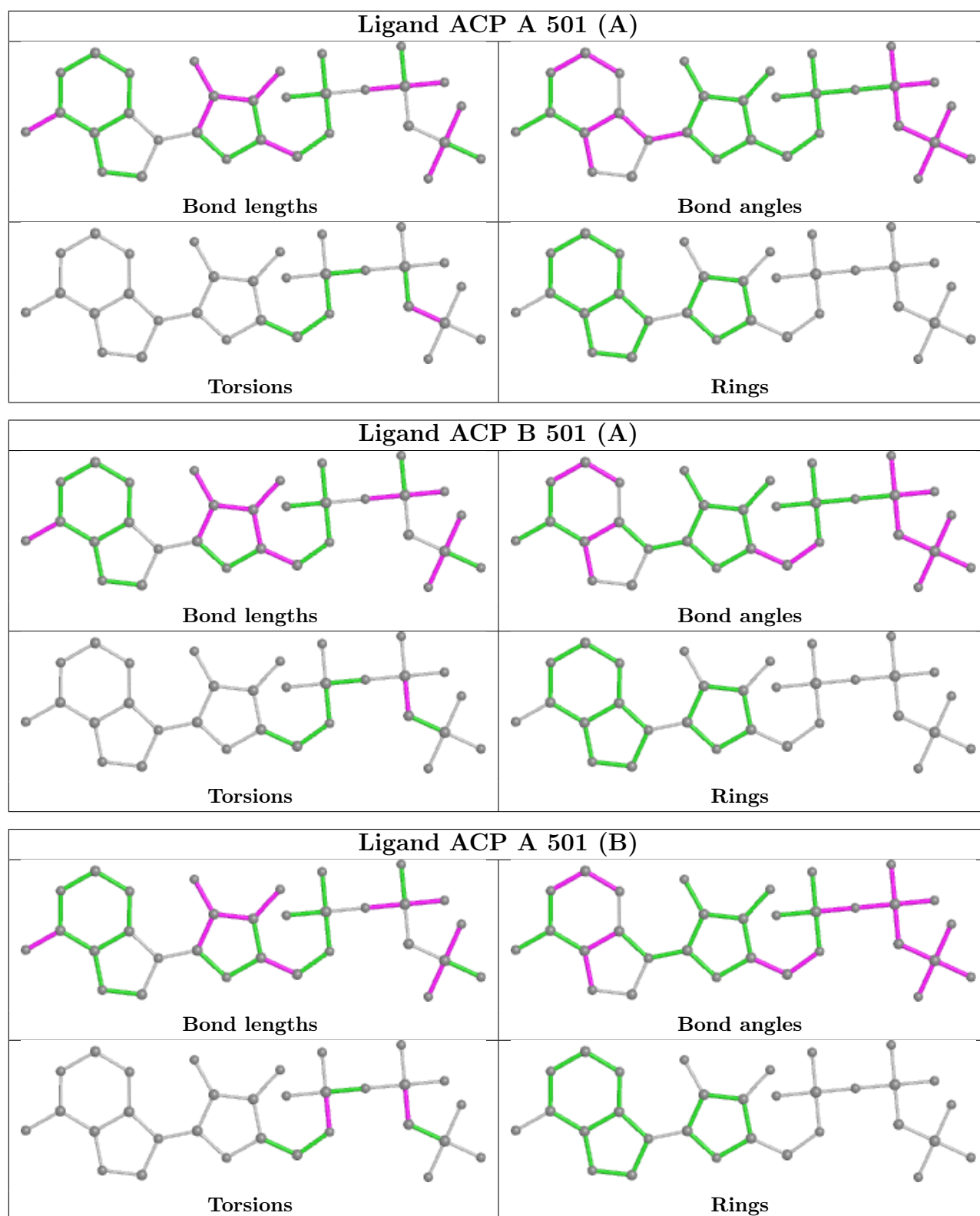


## Ligand ACP B 501 (B)



## Ligand ACP C 501 (A)





## 5.7 Other polymers [\(i\)](#)

There are no such residues in this entry.

## 5.8 Polymer linkage issues ⓘ

There are no chain breaks in this entry.

## 6 Fit of model and data

### 6.1 Protein, DNA and RNA chains

In the following table, the column labelled ‘#RSRZ > 2’ contains the number (and percentage) of RSRZ outliers, followed by percent RSRZ outliers for the chain as percentile scores relative to all X-ray entries and entries of similar resolution. The OWAB column contains the minimum, median, 95<sup>th</sup> percentile and maximum values of the occupancy-weighted average B-factor per residue. The column labelled ‘Q < 0.9’ lists the number of (and percentage) of residues with an average occupancy less than 0.9.

Mol	Chain	Analysed	<RSRZ>	#RSRZ>2	OWAB(Å <sup>2</sup> )	Q<0.9
1	A	429/450 (95%)	-0.12	14 (3%) 46 56	8, 15, 33, 78	0
1	B	429/450 (95%)	-0.33	10 (2%) 60 69	8, 14, 32, 78	0
1	C	429/450 (95%)	-0.16	13 (3%) 50 59	8, 15, 34, 80	0
All	All	1287/1350 (95%)	-0.21	37 (2%) 51 60	8, 15, 33, 80	0

All (37) RSRZ outliers are listed below:

Mol	Chain	Res	Type	RSRZ
1	A	370	SER	8.5
1	A	2	THR	8.4
1	B	370	SER	7.3
1	A	371	VAL	7.0
1	B	2	THR	6.7
1	A	372	GLU	6.7
1	C	2	THR	6.4
1	C	370	SER	6.3
1	B	371	VAL	5.6
1	A	367	GLU	5.5
1	B	372	GLU	5.2
1	C	372	GLU	4.8
1	B	369	HIS	4.7
1	A	369	HIS	4.6
1	C	368	GLY	4.5
1	B	368	GLY	4.1
1	C	369	HIS	4.0
1	A	368	GLY	4.0
1	C	371	VAL	3.6
1	A	3	ASP	3.3
1	C	244	ALA	3.1
1	A	6	SER	3.0
1	A	391	GLU	2.8

*Continued on next page...*



*Continued from previous page...*

Mol	Chain	Res	Type	RSRZ
1	A	244	ALA	2.7
1	A	9	ARG	2.7
1	B	366	VAL	2.6
1	C	252	ASP	2.4
1	C	367	GLU	2.3
1	C	9	ARG	2.2
1	A	373	ALA	2.2
1	A	10	GLU	2.1
1	B	9	ARG	2.1
1	B	367	GLU	2.1
1	C	10	GLU	2.1
1	B	6	SER	2.0
1	C	3	ASP	2.0
1	C	250	GLU	2.0

## 6.2 Non-standard residues in protein, DNA, RNA chains [i](#)

There are no non-standard protein/DNA/RNA residues in this entry.

## 6.3 Carbohydrates [i](#)

There are no monosaccharides in this entry.

## 6.4 Ligands [i](#)

In the following table, the Atoms column lists the number of modelled atoms in the group and the number defined in the chemical component dictionary. The B-factors column lists the minimum, median, 95<sup>th</sup> percentile and maximum values of B factors of atoms in the group. The column labelled 'Q< 0.9' lists the number of atoms with occupancy less than 0.9.

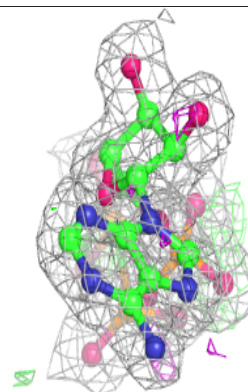
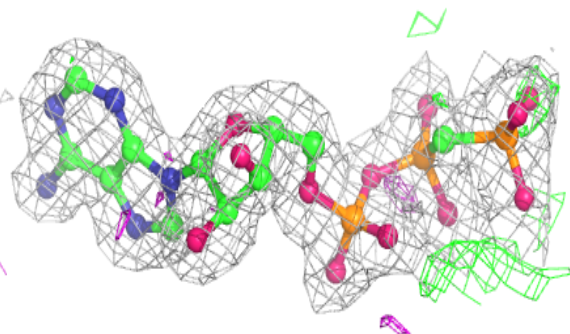
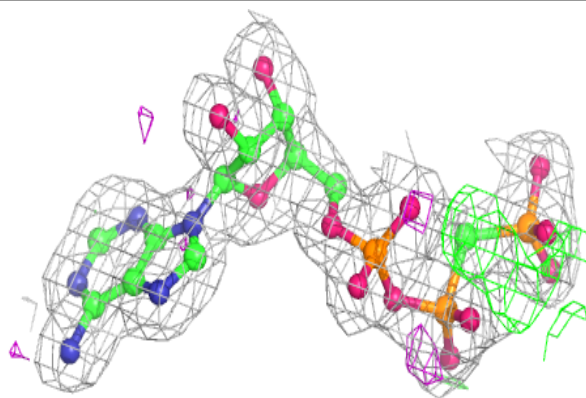
Mol	Type	Chain	Res	Atoms	RSCC	RSR	B-factors( $\text{\AA}^2$ )	Q<0.9
2	ACP	C	501[B]	31/31	0.92	0.14	11,19,21,21	31
2	ACP	C	501[A]	31/31	0.92	0.14	11,19,24,25	31
2	ACP	A	501[A]	31/31	0.93	0.14	12,17,21,21	31
2	ACP	A	501[B]	31/31	0.93	0.14	9,18,21,23	31
2	ACP	B	501[A]	31/31	0.94	0.13	7,16,21,25	31
2	ACP	B	501[B]	31/31	0.94	0.13	12,15,20,21	31

The following is a graphical depiction of the model fit to experimental electron density of all instances of the Ligand of Interest. In addition, ligands with molecular weight > 250 and outliers

as shown on the geometry validation Tables will also be included. Each fit is shown from different orientation to approximate a three-dimensional view.

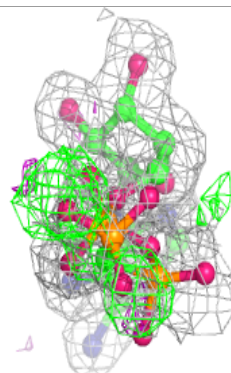
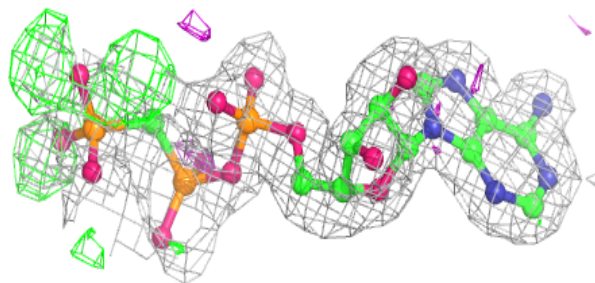
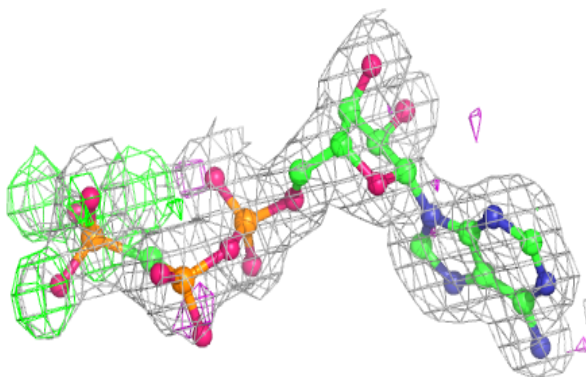
**Electron density around ACP C 501 (B):**

$2mF_o-DF_c$  (at 0.7 rmsd) in gray  
 $mF_o-DF_c$  (at 3 rmsd) in purple (negative)  
and green (positive)



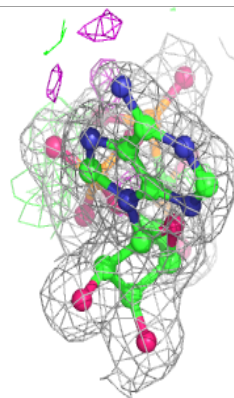
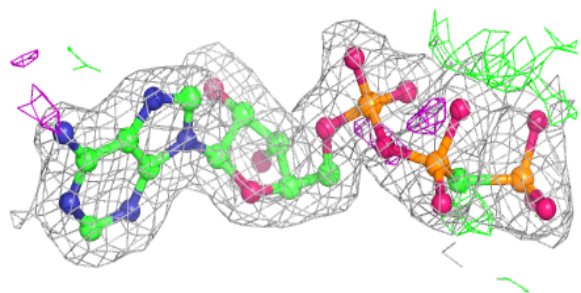
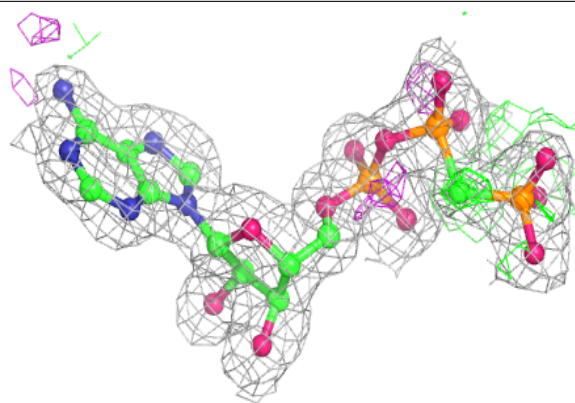
**Electron density around ACP C 501 (A):**

$2mF_o-DF_c$  (at 0.7 rmsd) in gray  
 $mF_o-DF_c$  (at 3 rmsd) in purple (negative)  
and green (positive)

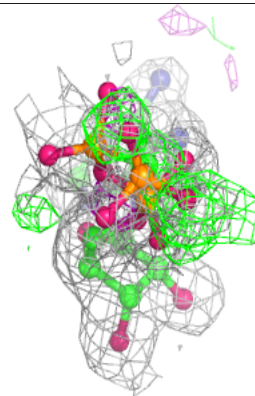
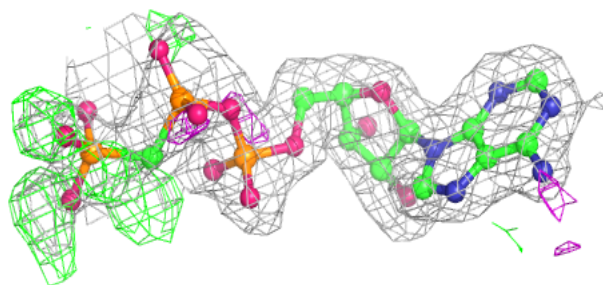
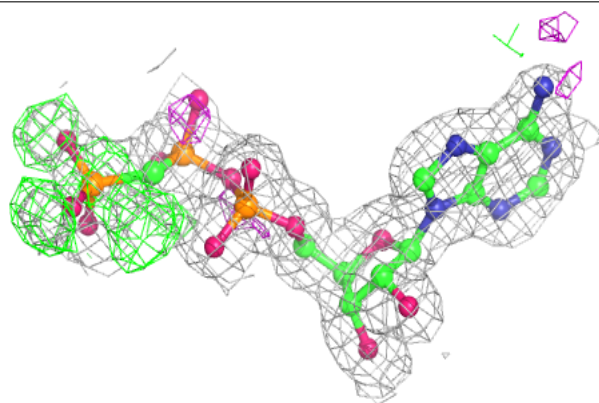


**Electron density around ACP A 501 (A):**

$2mF_o-DF_c$  (at 0.7 rmsd) in gray  
 $mF_o-DF_c$  (at 3 rmsd) in purple (negative)  
and green (positive)

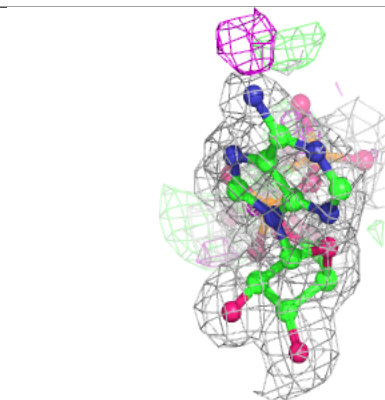
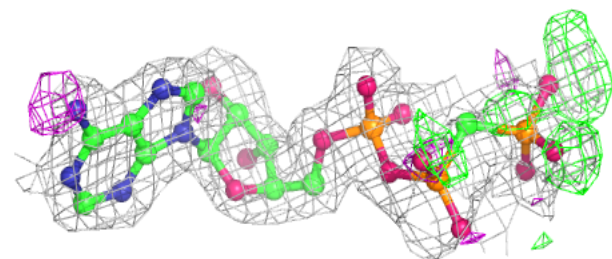
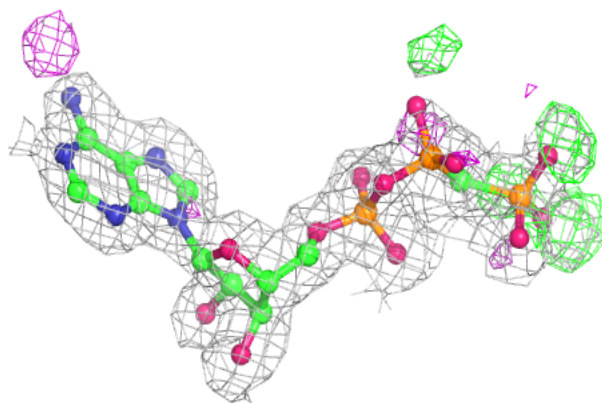
**Electron density around ACP A 501 (B):**

$2mF_o-DF_c$  (at 0.7 rmsd) in gray  
 $mF_o-DF_c$  (at 3 rmsd) in purple (negative)  
and green (positive)

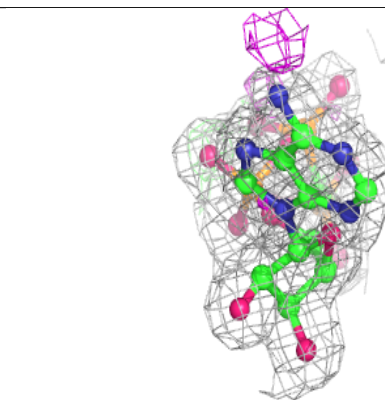
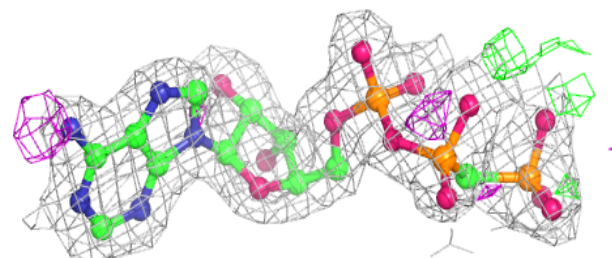
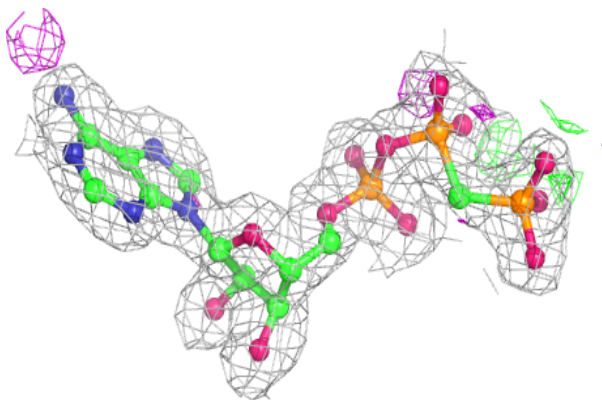


**Electron density around ACP B 501 (A):**

$2mF_o-DF_c$  (at 0.7 rmsd) in gray  
 $mF_o-DF_c$  (at 3 rmsd) in purple (negative)  
and green (positive)

**Electron density around ACP B 501 (B):**

$2mF_o-DF_c$  (at 0.7 rmsd) in gray  
 $mF_o-DF_c$  (at 3 rmsd) in purple (negative)  
and green (positive)



## 6.5 Other polymers [i](#)

There are no such residues in this entry.