



Full wwPDB X-ray Structure Validation Report ⓘ

May 25, 2020 – 06:44 pm BST

PDB ID : 6CRG
Title : Crystal Structure of Shp2 E76K GOF Mutant in complex with SHP099
Authors : Stams, T.; Fodor, M.
Deposited on : 2018-03-17
Resolution : 2.75 Å(reported)

This is a Full wwPDB X-ray Structure Validation Report for a publicly released PDB entry.

We welcome your comments at validation@mail.wwpdb.org

A user guide is available at

<https://www.wwpdb.org/validation/2017/XrayValidationReportHelp>

with specific help available everywhere you see the ⓘ symbol.

The following versions of software and data (see [references ⓘ](#)) were used in the production of this report:

MolProbity : 4.02b-467
Mogul : 1.8.5 (274361), CSD as541be (2020)
Xtriage (Phenix) : 1.13
EDS : 2.11
buster-report : 1.1.7 (2018)
Percentile statistics : 20191225.v01 (using entries in the PDB archive December 25th 2019)
Refmac : 5.8.0158
CCP4 : 7.0.044 (Gargrove)
Ideal geometry (proteins) : Engh & Huber (2001)
Ideal geometry (DNA, RNA) : Parkinson et al. (1996)
Validation Pipeline (wwPDB-VP) : 2.11

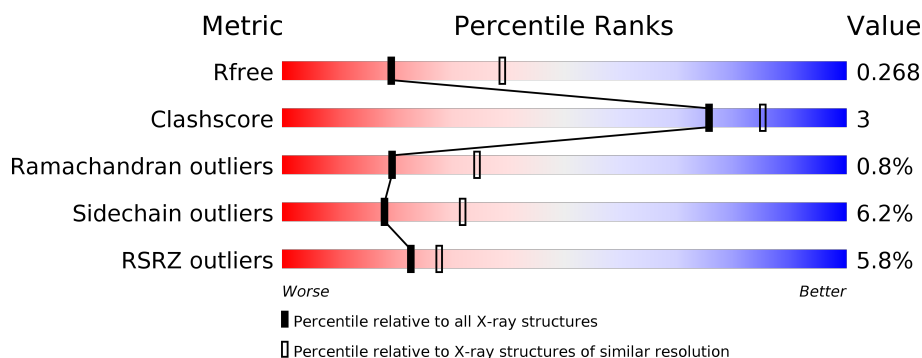
1 Overall quality at a glance

The following experimental techniques were used to determine the structure:

X-RAY DIFFRACTION

The reported resolution of this entry is 2.75 Å.

Percentile scores (ranging between 0-100) for global validation metrics of the entry are shown in the following graphic. The table shows the number of entries on which the scores are based.



Metric	Whole archive (#Entries)	Similar resolution (#Entries, resolution range(Å))
R_{free}	130704	1235 (2.78-2.74)
Clashscore	141614	1277 (2.78-2.74)
Ramachandran outliers	138981	1257 (2.78-2.74)
Sidechain outliers	138945	1257 (2.78-2.74)
RSRZ outliers	127900	1207 (2.78-2.74)

The table below summarises the geometric issues observed across the polymeric chains and their fit to the electron density. The red, orange, yellow and green segments on the lower bar indicate the fraction of residues that contain outliers for ≥ 3 , 2, 1 and 0 types of geometric quality criteria respectively. A grey segment represents the fraction of residues that are not modelled. The numeric value for each fraction is indicated below the corresponding segment, with a dot representing fractions $\leq 5\%$. The upper red bar (where present) indicates the fraction of residues that have poor fit to the electron density. The numeric value is given above the bar.

Mol	Chain	Length	Quality of chain
1	A	526	<div> <div>7%</div> <div> <div></div> <div>78%</div> <div>12%</div> <div>9%</div> </div> </div>
1	B	526	<div> <div>4%</div> <div> <div></div> <div>74%</div> <div>14%</div> <div>12%</div> </div> </div>

2 Entry composition [i](#)

There are 5 unique types of molecules in this entry. The entry contains 7793 atoms, of which 0 are hydrogens and 0 are deuteriums.

In the tables below, the ZeroOcc column contains the number of atoms modelled with zero occupancy, the AltConf column contains the number of residues with at least one atom in alternate conformation and the Trace column contains the number of residues modelled with at most 2 atoms.

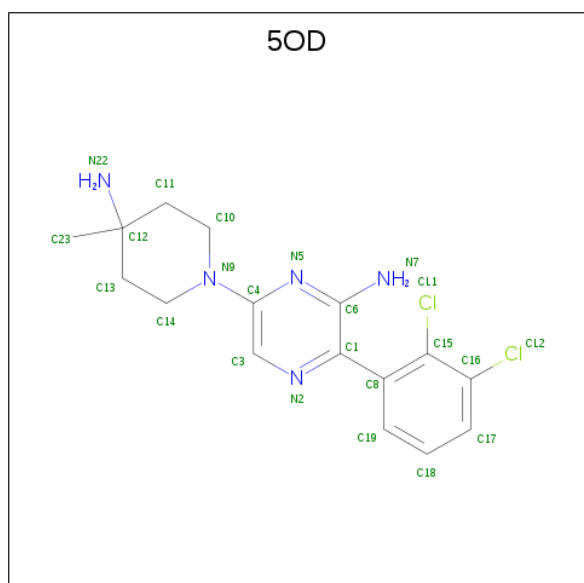
- Molecule 1 is a protein called Tyrosine-protein phosphatase non-receptor type 11.

Mol	Chain	Residues	Atoms					ZeroOcc	AltConf	Trace
1	A	477	Total	C	N	O	S	0	0	0
			3863	2436	688	721	18			
1	B	462	Total	C	N	O	S	0	0	0
			3746	2366	666	697	17			

There are 4 discrepancies between the modelled and reference sequences:

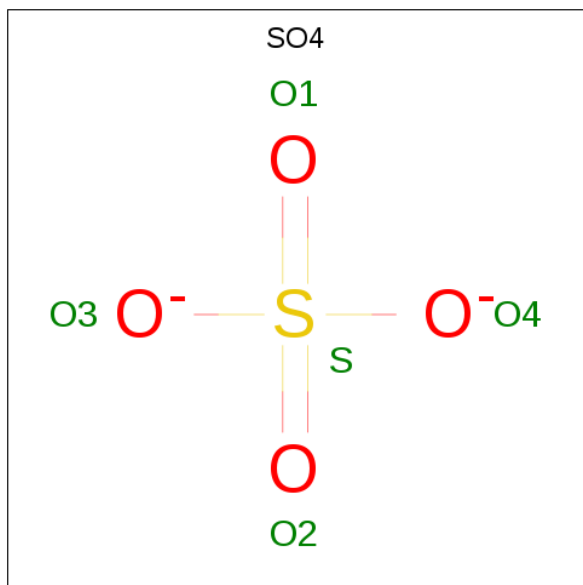
Chain	Residue	Modelled	Actual	Comment	Reference
A	0	GLY	-	expression tag	UNP Q06124
A	76	LYS	GLU	engineered mutation	UNP Q06124
B	0	GLY	-	expression tag	UNP Q06124
B	76	LYS	GLU	engineered mutation	UNP Q06124

- Molecule 2 is 6-(4-azanyl-4-methyl-piperidin-1-yl)-3-[2,3-bis(chloranyl)phenyl]pyrazin-2-amine (three-letter code: 5OD) (formula: C₁₆H₁₉Cl₂N₅) (labeled as "Ligand of Interest" by author).



Mol	Chain	Residues	Atoms				ZeroOcc	AltConf
2	A	1	Total	C	Cl	N	0	0
			23	16	2	5		
2	B	1	Total	C	Cl	N	0	0
			23	16	2	5		

- Molecule 3 is SULFATE ION (three-letter code: SO4) (formula: O₄S).



Mol	Chain	Residues	Atoms			ZeroOcc	AltConf
3	A	1	Total	O	S	0	0
			5	4	1		
3	A	1	Total	O	S	0	0
			5	4	1		
3	A	1	Total	O	S	0	0
			5	4	1		
3	A	1	Total	O	S	0	0
			5	4	1		
3	B	1	Total	O	S	0	0
			5	4	1		
3	B	1	Total	O	S	0	0
			5	4	1		
3	B	1	Total	O	S	0	0
			5	4	1		
3	B	1	Total	O	S	0	0
			5	4	1		

- Molecule 4 is GLYCEROL (three-letter code: GOL) (formula: C₃H₈O₃).



Mol	Chain	Residues	Atoms			ZeroOcc	AltConf
4	A	1	Total	C	O	0	0
			6	3	3		

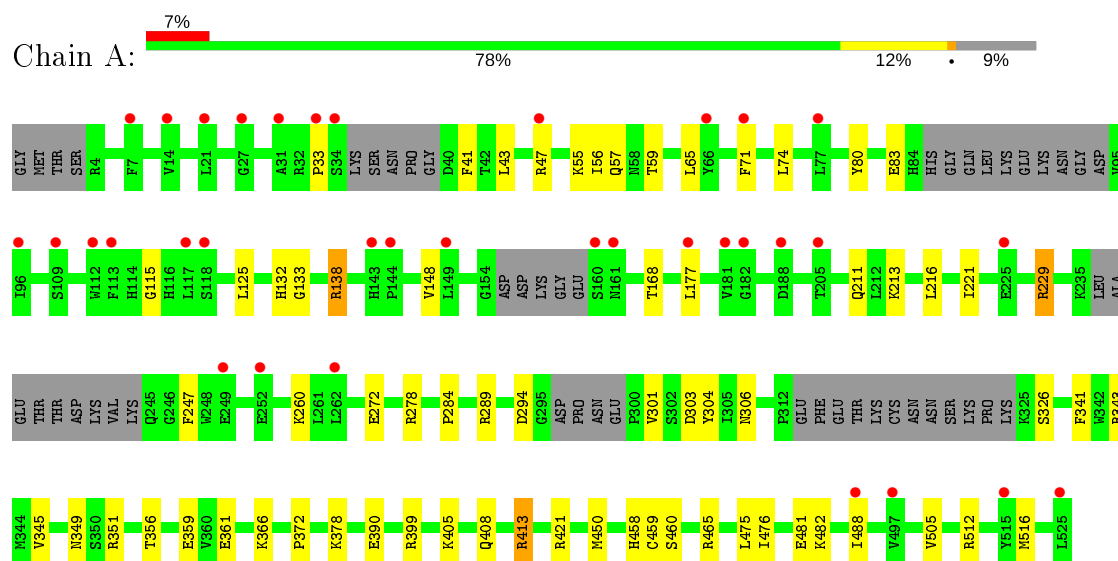
- Molecule 5 is water.

Mol	Chain	Residues	Atoms		ZeroOcc	AltConf
5	A	49	Total	O	0	0
			49	49		
5	B	43	Total	O	0	0
			43	43		

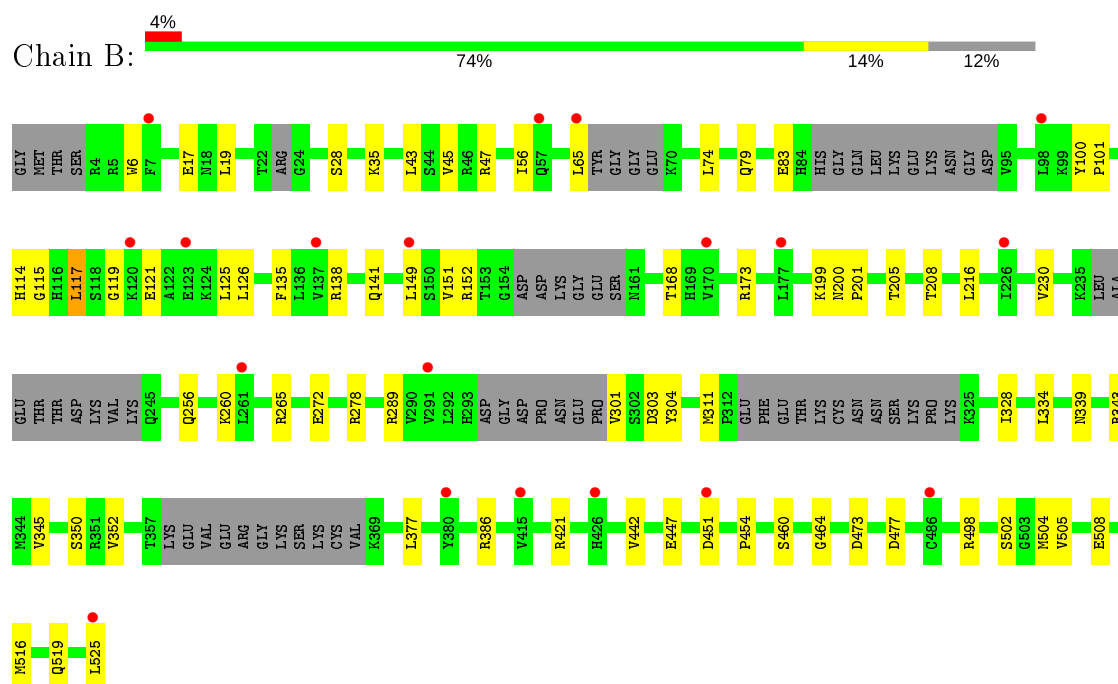
3 Residue-property plots [i](#)

These plots are drawn for all protein, RNA and DNA chains in the entry. The first graphic for a chain summarises the proportions of the various outlier classes displayed in the second graphic. The second graphic shows the sequence view annotated by issues in geometry and electron density. Residues are color-coded according to the number of geometric quality criteria for which they contain at least one outlier: green = 0, yellow = 1, orange = 2 and red = 3 or more. A red dot above a residue indicates a poor fit to the electron density ($RSRZ > 2$). Stretches of 2 or more consecutive residues without any outlier are shown as a green connector. Residues present in the sample, but not in the model, are shown in grey.

- Molecule 1: Tyrosine-protein phosphatase non-receptor type 11



- Molecule 1: Tyrosine-protein phosphatase non-receptor type 11



4 Data and refinement statistics

Property	Value	Source
Space group	P 1 21 1	Depositor
Cell constants a, b, c, α , β , γ	45.44Å 214.09Å 55.54Å 90.00° 95.66° 90.00°	Depositor
Resolution (Å)	107.04 – 2.75 55.27 – 2.75	Depositor EDS
% Data completeness (in resolution range)	98.9 (107.04-2.75) 99.5 (55.27-2.75)	Depositor EDS
R_{merge}	(Not available)	Depositor
R_{sym}	(Not available)	Depositor
$\langle I/\sigma(I) \rangle$ ¹	2.13 (at 2.77Å)	Xtriage
Refinement program	BUSTER 2.11.7	Depositor
R, R_{free}	0.196 , 0.250 0.203 , 0.268	Depositor DCC
R_{free} test set	1371 reflections (5.07%)	wwPDB-VP
Wilson B-factor (Å ²)	57.0	Xtriage
Anisotropy	0.579	Xtriage
Bulk solvent k_{sol} (e/Å ³), B_{sol} (Å ²)	0.35 , 61.8	EDS
L-test for twinning ²	$\langle L \rangle = 0.48$, $\langle L^2 \rangle = 0.31$	Xtriage
Estimated twinning fraction	No twinning to report.	Xtriage
F_o, F_c correlation	0.94	EDS
Total number of atoms	7793	wwPDB-VP
Average B, all atoms (Å ²)	63.0	wwPDB-VP

Xtriage's analysis on translational NCS is as follows: *The largest off-origin peak in the Patterson function is 7.05% of the height of the origin peak. No significant pseudotranslation is detected.*

¹Intensities estimated from amplitudes.

²Theoretical values of $\langle |L| \rangle$, $\langle L^2 \rangle$ for acentric reflections are 0.5, 0.333 respectively for untwinned datasets, and 0.375, 0.2 for perfectly twinned datasets.

5 Model quality

5.1 Standard geometry

Bond lengths and bond angles in the following residue types are not validated in this section: GOL, SO4, 5OD

The Z score for a bond length (or angle) is the number of standard deviations the observed value is removed from the expected value. A bond length (or angle) with $|Z| > 5$ is considered an outlier worth inspection. RMSZ is the root-mean-square of all Z scores of the bond lengths (or angles).

Mol	Chain	Bond lengths		Bond angles	
		RMSZ	$\# Z > 5$	RMSZ	$\# Z > 5$
1	A	0.41	0/3941	0.63	0/5311
1	B	0.41	0/3821	0.64	0/5151
All	All	0.41	0/7762	0.64	0/10462

There are no bond length outliers.

There are no bond angle outliers.

There are no chirality outliers.

There are no planarity outliers.

5.2 Too-close contacts

In the following table, the Non-H and H(model) columns list the number of non-hydrogen atoms and hydrogen atoms in the chain respectively. The H(added) column lists the number of hydrogen atoms added and optimized by MolProbity. The Clashes column lists the number of clashes within the asymmetric unit, whereas Symm-Clashes lists symmetry related clashes.

Mol	Chain	Non-H	H(model)	H(added)	Clashes	Symm-Clashes
1	A	3863	0	3809	24	0
1	B	3746	0	3692	23	0
2	A	23	0	0	0	0
2	B	23	0	0	0	0
3	A	20	0	0	0	0
3	B	20	0	0	0	0
4	A	6	0	8	1	0
5	A	49	0	0	0	0
5	B	43	0	0	0	0
All	All	7793	0	7509	47	0

The all-atom clashscore is defined as the number of clashes found per 1000 atoms (including

hydrogen atoms). The all-atom clashscore for this structure is 3.

All (47) close contacts within the same asymmetric unit are listed below, sorted by their clash magnitude.

Atom-1	Atom-2	Interatomic distance (Å)	Clash overlap (Å)
1:A:221:ILE:HG21	1:A:229:ARG:HD2	1.79	0.65
1:B:43:LEU:HB2	1:B:56:ILE:HD11	1.78	0.64
1:A:55:LYS:HE2	1:A:57:GLN:HB2	1.80	0.61
1:B:508:GLU:CD	1:B:508:GLU:H	2.09	0.56
1:B:352:VAL:HG11	1:B:442:VAL:HG13	1.88	0.55
1:A:294:ASP:HB2	1:A:343:ARG:HE	1.71	0.55
1:B:339:ASN:O	1:B:343:ARG:HG3	2.06	0.55
1:A:351:ARG:HH12	4:A:606:GOL:H31	1.72	0.54
1:B:199:LYS:O	1:B:201:PRO:HD3	2.07	0.54
1:A:361:GLU:HB2	1:A:366:LYS:HG3	1.92	0.52
1:A:133:GLY:HA3	1:A:213:LYS:HB2	1.91	0.52
1:B:498:ARG:HD2	1:B:504:MET:O	2.10	0.51
1:A:475:LEU:HD22	1:A:488:ILE:HG23	1.93	0.51
1:A:43:LEU:HB2	1:A:56:ILE:HD11	1.91	0.51
1:B:272:GLU:HG3	1:B:301:VAL:HG21	1.93	0.51
1:A:372:PRO:HB3	1:A:378:LYS:HB2	1.92	0.50
1:A:341:PHE:O	1:A:345:VAL:HG23	2.11	0.50
1:A:272:GLU:HB2	1:A:301:VAL:CG1	2.42	0.50
1:A:349:ASN:HA	1:A:413:ARG:HH12	1.77	0.50
1:B:278:ARG:HD2	1:B:460:SER:O	2.11	0.49
1:A:138:ARG:HD3	1:A:148:VAL:HB	1.95	0.49
1:B:289:ARG:HH11	1:B:304:TYR:HA	1.77	0.49
1:A:132:HIS:HE2	1:A:211:GLN:NE2	2.11	0.48
1:A:294:ASP:HB2	1:A:343:ARG:HH21	1.79	0.48
1:B:377:LEU:HD12	1:B:386:ARG:HB2	1.95	0.47
1:B:114:HIS:HB3	1:B:117:LEU:HD13	1.96	0.46
1:A:56:ILE:HG12	1:A:65:LEU:HD12	1.98	0.46
1:B:56:ILE:HG12	1:B:65:LEU:HD12	1.98	0.46
1:A:125:LEU:HB3	1:A:216:LEU:HD21	1.99	0.45
1:B:126:LEU:HD23	1:B:216:LEU:HD13	1.97	0.45
1:A:390:GLU:HG2	1:A:399:ARG:HG2	1.98	0.44
1:A:247:PHE:CG	1:A:512:ARG:HG2	2.52	0.44
1:B:328:ILE:HG13	1:B:454:PRO:HB2	1.99	0.44
1:A:71:PHE:HZ	1:A:80:TYR:CD2	2.35	0.44
1:B:345:VAL:HG13	1:B:350:SER:HB2	2.00	0.43
1:B:230:VAL:HG11	1:B:519:GLN:HE22	1.84	0.43
1:A:356:THR:OG1	1:A:459:CYS:HB3	2.19	0.43
1:A:284:PRO:HG3	1:A:306:ASN:HA	2.00	0.42

Continued on next page...

Continued from previous page...

Atom-1	Atom-2	Interatomic distance (Å)	Clash overlap (Å)
1:A:41:PHE:HB2	1:A:56:ILE:HB	2.01	0.42
1:B:125:LEU:HB3	1:B:216:LEU:HD21	2.00	0.42
1:B:28:SER:HA	1:B:100:TYR:O	2.20	0.42
1:B:6:TRP:HB3	1:B:101:PRO:HB3	2.02	0.42
1:B:135:PHE:HB3	1:B:151:VAL:HG13	2.02	0.42
1:A:289:ARG:HH11	1:A:304:TYR:HA	1.86	0.41
1:B:473:ASP:O	1:B:477:ASP:HB2	2.21	0.41
1:B:79:GLN:O	1:B:83:GLU:HG2	2.21	0.40
1:B:119:GLY:H	1:B:141:GLN:HE21	1.69	0.40

There are no symmetry-related clashes.

5.3 Torsion angles [i](#)

5.3.1 Protein backbone [i](#)

In the following table, the Percentiles column shows the percent Ramachandran outliers of the chain as a percentile score with respect to all X-ray entries followed by that with respect to entries of similar resolution.

The Analysed column shows the number of residues for which the backbone conformation was analysed, and the total number of residues.

Mol	Chain	Analysed	Favoured	Allowed	Outliers	Percentiles	
1	A	463/526 (88%)	441 (95%)	18 (4%)	4 (1%)	17	31
1	B	444/526 (84%)	421 (95%)	20 (4%)	3 (1%)	22	39
All	All	907/1052 (86%)	862 (95%)	38 (4%)	7 (1%)	19	34

All (7) Ramachandran outliers are listed below:

Mol	Chain	Res	Type
1	A	460	SER
1	B	505	VAL
1	A	83	GLU
1	A	505	VAL
1	B	464	GLY
1	B	115	GLY
1	A	115	GLY

5.3.2 Protein sidechains ⓘ

In the following table, the Percentiles column shows the percent sidechain outliers of the chain as a percentile score with respect to all X-ray entries followed by that with respect to entries of similar resolution.

The Analysed column shows the number of residues for which the sidechain conformation was analysed, and the total number of residues.

Mol	Chain	Analysed	Rotameric	Outliers	Percentiles	
1	A	424/467 (91%)	400 (94%)	24 (6%)	20	36
1	B	412/467 (88%)	384 (93%)	28 (7%)	16	28
All	All	836/934 (90%)	784 (94%)	52 (6%)	18	32

All (52) residues with a non-rotameric sidechain are listed below:

Mol	Chain	Res	Type
1	A	33	PRO
1	A	47	ARG
1	A	59	THR
1	A	74	LEU
1	A	138	ARG
1	A	168	THR
1	A	177	LEU
1	A	229	ARG
1	A	260	LYS
1	A	278	ARG
1	A	303	ASP
1	A	326	SER
1	A	359	GLU
1	A	405	LYS
1	A	408	GLN
1	A	413	ARG
1	A	421	ARG
1	A	450	MET
1	A	458	HIS
1	A	465	ARG
1	A	476	ILE
1	A	481	GLU
1	A	482	LYS
1	A	516	MET
1	B	17	GLU
1	B	19	LEU
1	B	35	LYS

Continued on next page...

Continued from previous page...

Mol	Chain	Res	Type
1	B	45	VAL
1	B	47	ARG
1	B	74	LEU
1	B	117	LEU
1	B	121	GLU
1	B	138	ARG
1	B	149	LEU
1	B	152	ARG
1	B	168	THR
1	B	173	ARG
1	B	200	ASN
1	B	205	THR
1	B	208	THR
1	B	256	GLN
1	B	260	LYS
1	B	265	ARG
1	B	303	ASP
1	B	311	MET
1	B	334	LEU
1	B	421	ARG
1	B	447	GLU
1	B	451	ASP
1	B	502	SER
1	B	516	MET
1	B	525	LEU

Some sidechains can be flipped to improve hydrogen bonding and reduce clashes. All (10) such sidechains are listed below:

Mol	Chain	Res	Type
1	A	79	GLN
1	A	114	HIS
1	A	211	GLN
1	A	269	GLN
1	A	408	GLN
1	B	10	ASN
1	B	114	HIS
1	B	256	GLN
1	B	269	GLN
1	B	519	GLN

5.3.3 RNA ⓘ

There are no RNA molecules in this entry.

5.4 Non-standard residues in protein, DNA, RNA chains ⓘ

There are no non-standard protein/DNA/RNA residues in this entry.

5.5 Carbohydrates ⓘ

There are no carbohydrates in this entry.

5.6 Ligand geometry ⓘ

11 ligands are modelled in this entry.

In the following table, the Counts columns list the number of bonds (or angles) for which Mogul statistics could be retrieved, the number of bonds (or angles) that are observed in the model and the number of bonds (or angles) that are defined in the Chemical Component Dictionary. The Link column lists molecule types, if any, to which the group is linked. The Z score for a bond length (or angle) is the number of standard deviations the observed value is removed from the expected value. A bond length (or angle) with $|Z| > 2$ is considered an outlier worth inspection. RMSZ is the root-mean-square of all Z scores of the bond lengths (or angles).

Mol	Type	Chain	Res	Link	Bond lengths			Bond angles		
					Counts	RMSZ	# $ Z > 2$	Counts	RMSZ	# $ Z > 2$
3	SO4	B	605	-	4,4,4	0.12	0	6,6,6	0.06	0
3	SO4	A	605	-	4,4,4	0.14	0	6,6,6	0.07	0
3	SO4	B	604	-	4,4,4	0.09	0	6,6,6	0.09	0
3	SO4	A	602	-	4,4,4	0.16	0	6,6,6	0.06	0
2	5OD	B	601	-	23,25,25	1.53	4 (17%)	28,37,37	1.24	4 (14%)
2	5OD	A	601	-	23,25,25	1.50	4 (17%)	28,37,37	1.60	7 (25%)
3	SO4	B	603	-	4,4,4	0.13	0	6,6,6	0.10	0
4	GOL	A	606	-	5,5,5	0.08	0	5,5,5	0.21	0
3	SO4	B	602	-	4,4,4	0.17	0	6,6,6	0.24	0
3	SO4	A	604	-	4,4,4	0.18	0	6,6,6	0.09	0
3	SO4	A	603	-	4,4,4	0.14	0	6,6,6	0.06	0

In the following table, the Chirals column lists the number of chiral outliers, the number of chiral centers analysed, the number of these observed in the model and the number defined in the Chemical Component Dictionary. Similar counts are reported in the Torsion and Rings columns. '-' means no outliers of that kind were identified.

Mol	Type	Chain	Res	Link	Chirals	Torsions	Rings
4	GOL	A	606	-	-	0/4/4/4	-
2	5OD	B	601	-	-	0/8/20/20	0/3/3/3
2	5OD	A	601	-	-	0/8/20/20	0/3/3/3

All (8) bond length outliers are listed below:

Mol	Chain	Res	Type	Atoms	Z	Observed(Å)	Ideal(Å)
2	A	601	5OD	C8-C15	3.20	1.43	1.39
2	B	601	5OD	C4-N9	2.73	1.43	1.37
2	B	601	5OD	C8-C15	2.66	1.42	1.39
2	A	601	5OD	C4-N9	2.57	1.42	1.37
2	A	601	5OD	C16-C15	2.52	1.43	1.39
2	B	601	5OD	C4-N5	2.29	1.37	1.34
2	B	601	5OD	C16-C15	2.07	1.42	1.39
2	A	601	5OD	C6-N7	2.06	1.39	1.34

All (11) bond angle outliers are listed below:

Mol	Chain	Res	Type	Atoms	Z	Observed(°)	Ideal(°)
2	A	601	5OD	C1-C6-N5	3.38	122.30	120.09
2	A	601	5OD	C8-C1-C6	3.34	126.47	122.34
2	A	601	5OD	N5-C4-N9	2.87	119.77	116.55
2	B	601	5OD	N5-C4-N9	2.64	119.51	116.55
2	A	601	5OD	C1-C6-N7	2.61	123.28	121.11
2	B	601	5OD	C10-N9-C14	2.51	117.06	111.52
2	B	601	5OD	C1-C6-N5	2.48	121.71	120.09
2	B	601	5OD	C8-C1-C6	2.32	125.21	122.34
2	A	601	5OD	C10-N9-C14	2.25	116.49	111.52
2	A	601	5OD	C14-C13-C12	2.13	116.93	113.22
2	A	601	5OD	C10-C11-C12	2.04	116.77	113.22

There are no chirality outliers.

There are no torsion outliers.

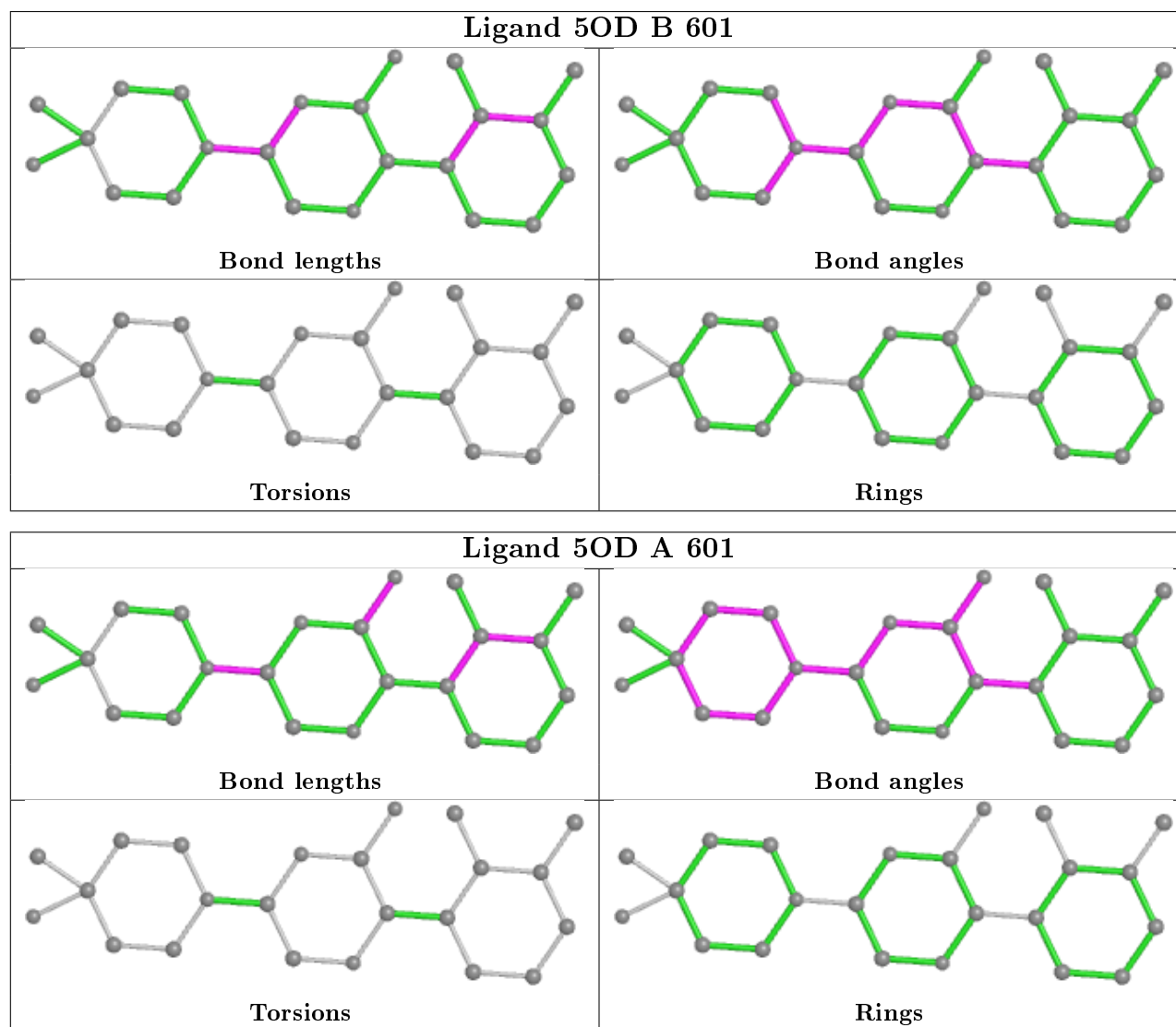
There are no ring outliers.

1 monomer is involved in 1 short contact:

Mol	Chain	Res	Type	Clashes	Symm-Clashes
4	A	606	GOL	1	0

The following is a two-dimensional graphical depiction of Mogul quality analysis of bond lengths, bond angles, torsion angles, and ring geometry for all instances of the Ligand of Interest. In addition, ligands with molecular weight > 250 and outliers as shown on the validation Tables will

also be included. For torsion angles, if less than 5% of the Mogul distribution of torsion angles is within 10 degrees of the torsion angle in question, then that torsion angle is considered an outlier. Any bond that is central to one or more torsion angles identified as an outlier by Mogul will be highlighted in the graph. For rings, the root-mean-square deviation (RMSD) between the ring in question and similar rings identified by Mogul is calculated over all ring torsion angles. If the average RMSD is greater than 60 degrees and the minimal RMSD between the ring in question and any Mogul-identified rings is also greater than 60 degrees, then that ring is considered an outlier. The outliers are highlighted in purple. The color gray indicates Mogul did not find sufficient equivalents in the CSD to analyse the geometry.



5.7 Other polymers ⓘ

There are no such residues in this entry.

5.8 Polymer linkage issues

There are no chain breaks in this entry.

6 Fit of model and data

6.1 Protein, DNA and RNA chains

In the following table, the column labelled ‘#RSRZ> 2’ contains the number (and percentage) of RSRZ outliers, followed by percent RSRZ outliers for the chain as percentile scores relative to all X-ray entries and entries of similar resolution. The OWAB column contains the minimum, median, 95th percentile and maximum values of the occupancy-weighted average B-factor per residue. The column labelled ‘Q< 0.9’ lists the number of (and percentage) of residues with an average occupancy less than 0.9.

Mol	Chain	Analysed	<RSRZ>	#RSRZ>2		OWAB(Å ²)	Q<0.9
1	A	477/526 (90%)	0.62	35 (7%)	15 18	36, 66, 87, 107	0
1	B	462/526 (87%)	0.51	19 (4%)	37 44	36, 61, 82, 98	0
All	All	939/1052 (89%)	0.57	54 (5%)	23 28	36, 63, 85, 107	0

All (54) RSRZ outliers are listed below:

Mol	Chain	Res	Type	RSRZ
1	A	47	ARG	4.2
1	A	109	SER	4.0
1	A	14	VAL	3.6
1	A	7	PHE	3.5
1	B	120	LYS	3.4
1	B	177	LEU	3.4
1	A	31	ALA	3.2
1	A	71	PHE	3.1
1	A	225	GLU	3.0
1	B	98	LEU	2.9
1	B	525	LEU	2.9
1	A	177	LEU	2.8
1	A	181	VAL	2.8
1	A	21	LEU	2.8
1	B	170	VAL	2.8
1	B	65	LEU	2.7
1	A	66	TYR	2.7
1	B	226	ILE	2.7
1	A	525	LEU	2.6
1	A	113	PHE	2.6
1	A	249	GLU	2.6
1	A	112	TRP	2.6
1	A	34	SER	2.6
1	A	161	ASN	2.6

Continued on next page...

Continued from previous page...

Mol	Chain	Res	Type	RSRZ
1	A	488	ILE	2.5
1	A	143	HIS	2.5
1	A	33	PRO	2.5
1	A	188	ASP	2.5
1	A	252	GLU	2.5
1	A	77	LEU	2.5
1	A	27	GLY	2.4
1	B	486	CYS	2.4
1	B	123	GLU	2.3
1	B	57	GLN	2.3
1	B	451	ASP	2.2
1	A	497	VAL	2.2
1	B	7	PHE	2.2
1	B	380	TYR	2.2
1	A	144	PRO	2.2
1	B	261	LEU	2.2
1	B	426	HIS	2.1
1	A	262	LEU	2.1
1	A	96	ILE	2.1
1	A	117	LEU	2.1
1	B	291	VAL	2.1
1	A	205	THR	2.1
1	B	137	VAL	2.1
1	B	415	VAL	2.1
1	A	515	TYR	2.1
1	A	118	SER	2.1
1	A	149	LEU	2.0
1	B	149	LEU	2.0
1	A	160	SER	2.0
1	A	182	GLY	2.0

6.2 Non-standard residues in protein, DNA, RNA chains ⓘ

There are no non-standard protein/DNA/RNA residues in this entry.

6.3 Carbohydrates ⓘ

There are no carbohydrates in this entry.

6.4 Ligands ⓘ

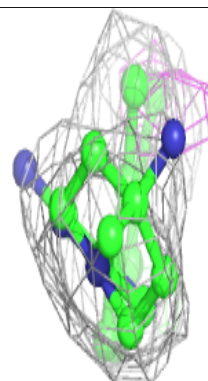
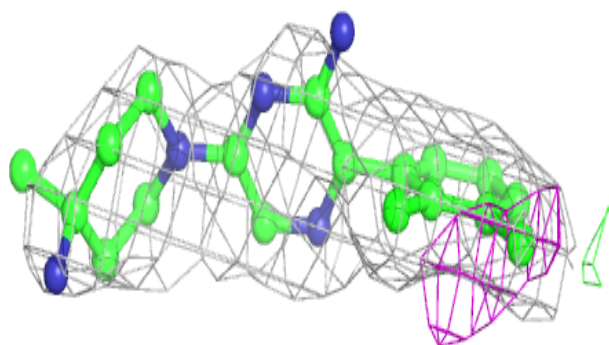
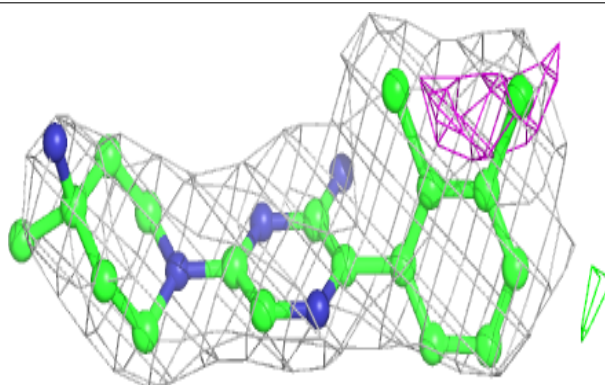
In the following table, the Atoms column lists the number of modelled atoms in the group and the number defined in the chemical component dictionary. The B-factors column lists the minimum, median, 95th percentile and maximum values of B factors of atoms in the group. The column labelled 'Q< 0.9' lists the number of atoms with occupancy less than 0.9.

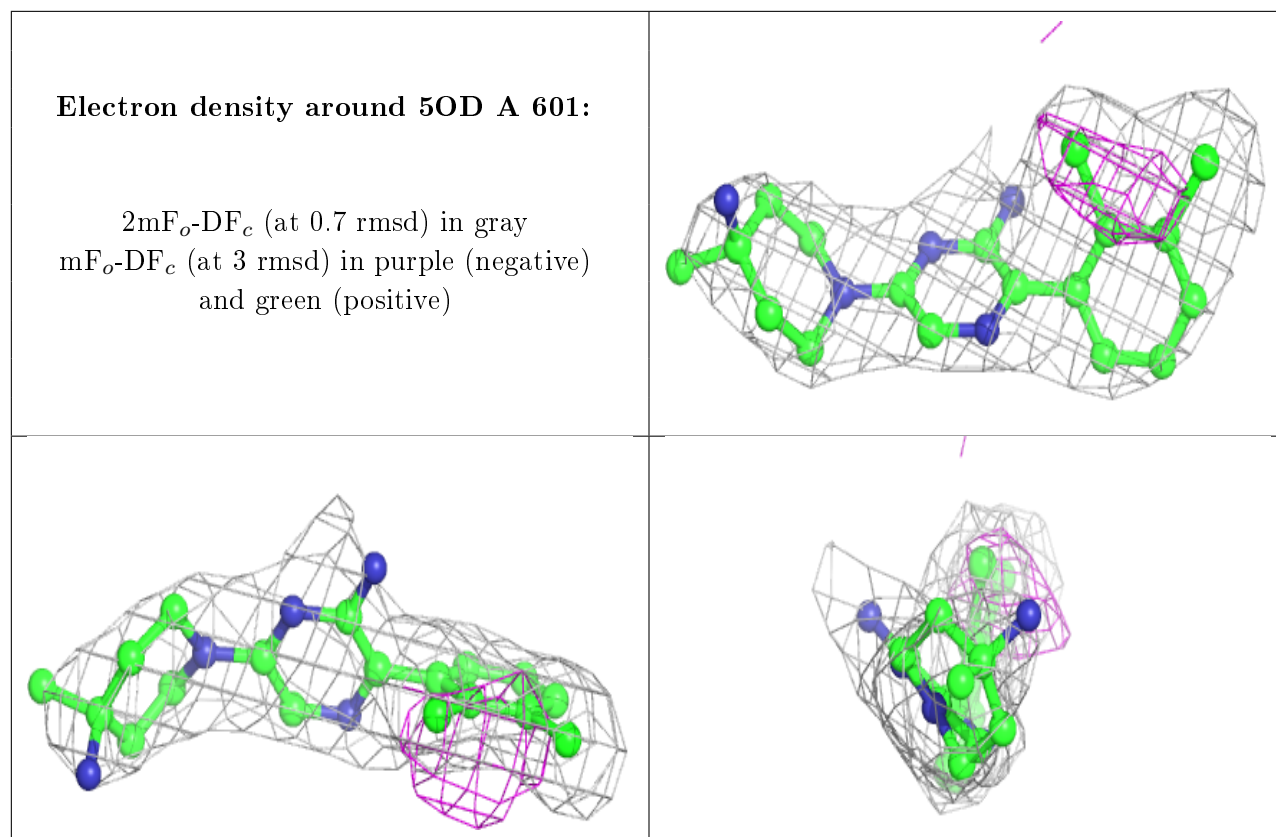
Mol	Type	Chain	Res	Atoms	RSCC	RSR	B-factors(Å ²)	Q<0.9
4	GOL	A	606	6/6	0.55	0.32	100,100,101,101	0
3	SO4	A	603	5/5	0.79	0.22	154,154,154,154	0
3	SO4	A	605	5/5	0.86	0.17	137,137,137,137	0
3	SO4	B	605	5/5	0.87	0.23	138,138,138,138	0
3	SO4	A	604	5/5	0.87	0.39	110,111,111,111	0
3	SO4	B	604	5/5	0.87	0.23	114,114,114,115	0
3	SO4	B	603	5/5	0.90	0.17	106,107,108,108	0
2	5OD	B	601	23/23	0.91	0.29	61,64,67,67	0
2	5OD	A	601	23/23	0.93	0.23	50,59,68,69	0
3	SO4	A	602	5/5	0.97	0.15	71,72,73,73	0
3	SO4	B	602	5/5	0.97	0.14	64,66,67,68	0

The following is a graphical depiction of the model fit to experimental electron density of all instances of the Ligand of Interest. In addition, ligands with molecular weight > 250 and outliers as shown on the geometry validation Tables will also be included. Each fit is shown from different orientation to approximate a three-dimensional view.

Electron density around 5OD B 601:

2mF_o-DF_c (at 0.7 rmsd) in gray
mF_o-DF_c (at 3 rmsd) in purple (negative)
and green (positive)





6.5 Other polymers [i](#)

There are no such residues in this entry.