



# Full wwPDB X-ray Structure Validation Report ⓘ

May 25, 2020 – 08:58 am BST

PDB ID : 3CSJ  
Title : Human glutathione s-transferase p1-1 in complex with chlorambucil  
Authors : Parker, L.J.  
Deposited on : 2008-04-09  
Resolution : 1.90 Å(reported)

This is a Full wwPDB X-ray Structure Validation Report for a publicly released PDB entry.

We welcome your comments at [validation@mail.wwpdb.org](mailto:validation@mail.wwpdb.org)

A user guide is available at

<https://www.wwpdb.org/validation/2017/XrayValidationReportHelp>

with specific help available everywhere you see the ⓘ symbol.

---

The following versions of software and data (see [references ⓘ](#)) were used in the production of this report:

MolProbity : 4.02b-467  
Mogul : 1.8.5 (274361), CSD as541be (2020)  
Xtriage (Phenix) : 1.13  
EDS : 2.11  
Percentile statistics : 20191225.v01 (using entries in the PDB archive December 25th 2019)  
Refmac : 5.8.0158  
CCP4 : 7.0.044 (Gargrove)  
Ideal geometry (proteins) : Engh & Huber (2001)  
Ideal geometry (DNA, RNA) : Parkinson et al. (1996)  
Validation Pipeline (wwPDB-VP) : 2.11

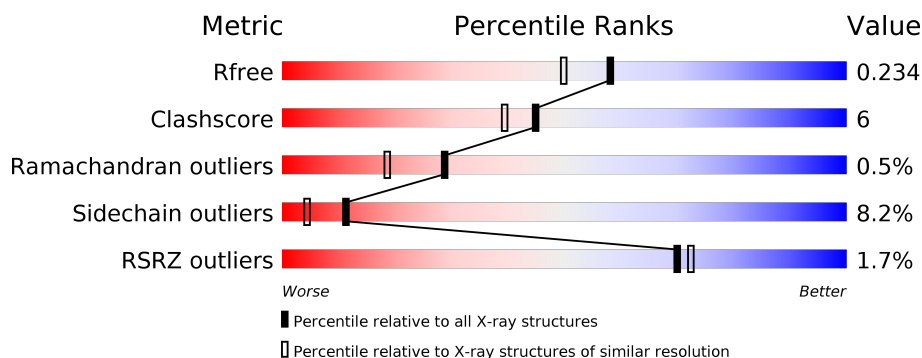
# 1 Overall quality at a glance

The following experimental techniques were used to determine the structure:

## *X-RAY DIFFRACTION*

The reported resolution of this entry is 1.90 Å.

Percentile scores (ranging between 0-100) for global validation metrics of the entry are shown in the following graphic. The table shows the number of entries on which the scores are based.



Metric	Whole archive (#Entries)	Similar resolution (#Entries, resolution range(Å))
$R_{free}$	130704	6207 (1.90-1.90)
Clashscore	141614	6847 (1.90-1.90)
Ramachandran outliers	138981	6760 (1.90-1.90)
Sidechain outliers	138945	6760 (1.90-1.90)
RSRZ outliers	127900	6082 (1.90-1.90)

The table below summarises the geometric issues observed across the polymeric chains and their fit to the electron density. The red, orange, yellow and green segments on the lower bar indicate the fraction of residues that contain outliers for  $\geq 3$ , 2, 1 and 0 types of geometric quality criteria respectively. A grey segment represents the fraction of residues that are not modelled. The numeric value for each fraction is indicated below the corresponding segment, with a dot representing fractions  $\leq 5\%$ . The upper red bar (where present) indicates the fraction of residues that have poor fit to the electron density. The numeric value is given above the bar.

Mol	Chain	Length	Quality of chain
1	A	209	<div> <div style="width: 100%; height: 10px; position: relative;"> <div style="position: absolute; top: -10px; left: 0; width: 100%;"></div> <div style="position: absolute; top: 0; left: 0; width: 100%; height: 10px;"> <div style="width: 2%; height: 10px; background-color: red;"></div> <div style="width: 80%; height: 10px; background-color: green;"></div> <div style="width: 14%; height: 10px; background-color: yellow;"></div> <div style="width: 4%; height: 10px; background-color: orange;"></div> </div> </div> <div> <div style="width: 2%;"></div> <div style="width: 82%;"></div> <div style="width: 14%;"></div> <div style="width: 4%;"></div> </div> </div>
1	B	209	<div> <div style="width: 100%; height: 10px; position: relative;"> <div style="position: absolute; top: -10px; left: 0; width: 100%;"></div> <div style="position: absolute; top: 0; left: 0; width: 100%; height: 10px;"> <div style="width: 2%; height: 10px; background-color: red;"></div> <div style="width: 80%; height: 10px; background-color: green;"></div> <div style="width: 15%; height: 10px; background-color: yellow;"></div> <div style="width: 4%; height: 10px; background-color: orange;"></div> </div> </div> <div> <div style="width: 2%;"></div> <div style="width: 82%;"></div> <div style="width: 15%;"></div> <div style="width: 4%;"></div> </div> </div>

## 2 Entry composition [i](#)

There are 5 unique types of molecules in this entry. The entry contains 3651 atoms, of which 0 are hydrogens and 0 are deuteriums.

In the tables below, the ZeroOcc column contains the number of atoms modelled with zero occupancy, the AltConf column contains the number of residues with at least one atom in alternate conformation and the Trace column contains the number of residues modelled with at most 2 atoms.

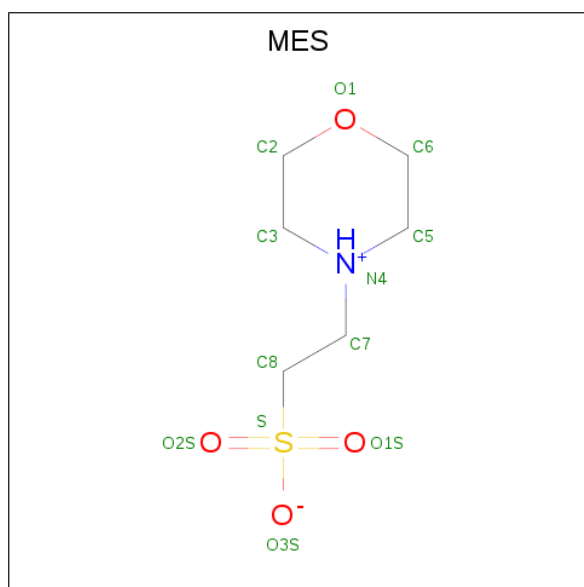
- Molecule 1 is a protein called Glutathione S-transferase P.

Mol	Chain	Residues	Atoms					ZeroOcc	AltConf	Trace
1	A	209	Total	C	N	O	S	0	0	0
			1638	1052	272	308	6			
1	B	209	Total	C	N	O	S	0	0	0
			1638	1052	272	308	6			

- Molecule 2 is CHLORIDE ION (three-letter code: CL) (formula: Cl).

Mol	Chain	Residues	Atoms		ZeroOcc	AltConf
2	A	1	Total	Cl	0	0
			1	1		

- Molecule 3 is 2-(N-MORPHOLINO)-ETHANESULFONIC ACID (three-letter code: MES) (formula: C<sub>6</sub>H<sub>13</sub>NO<sub>4</sub>S).



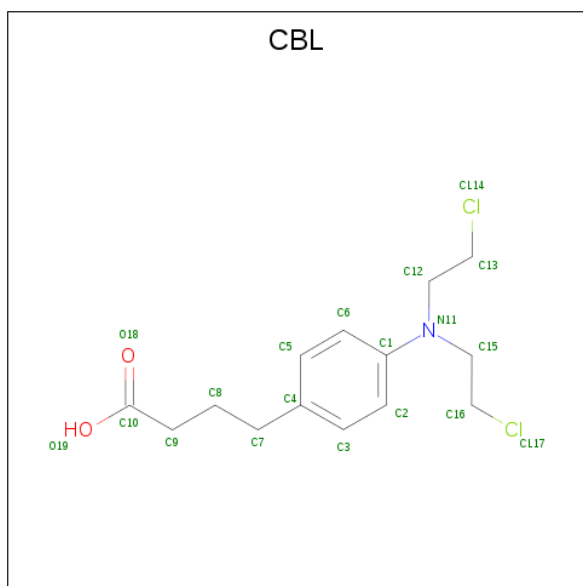
Mol	Chain	Residues	Atoms					ZeroOcc	AltConf
3	A	1	Total	C	N	O	S	0	0
			12	6	1	4	1		

*Continued on next page...*

*Continued from previous page...*

Mol	Chain	Residues	Atoms					ZeroOcc	AltConf
3	B	1	Total	C	N	O	S	0	0
			12	6	1	4	1		

- Molecule 4 is CHLORAMBUCIL (three-letter code: CBL) (formula:  $C_{14}H_{19}Cl_2NO_2$ ).



Mol	Chain	Residues	Atoms					ZeroOcc	AltConf
4	B	1	Total	C	Cl	N	O	0	0
			19	14	2	1	2		

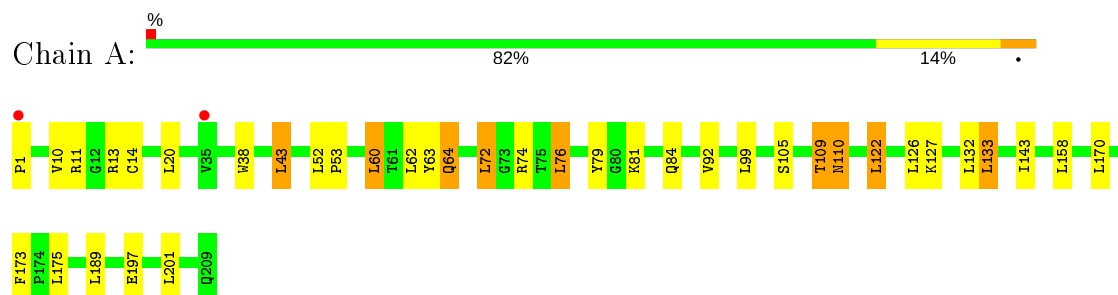
- Molecule 5 is water.

Mol	Chain	Residues	Atoms		ZeroOcc	AltConf
5	A	173	Total	O	0	0
			173	173		
5	B	158	Total	O	0	0
			158	158		

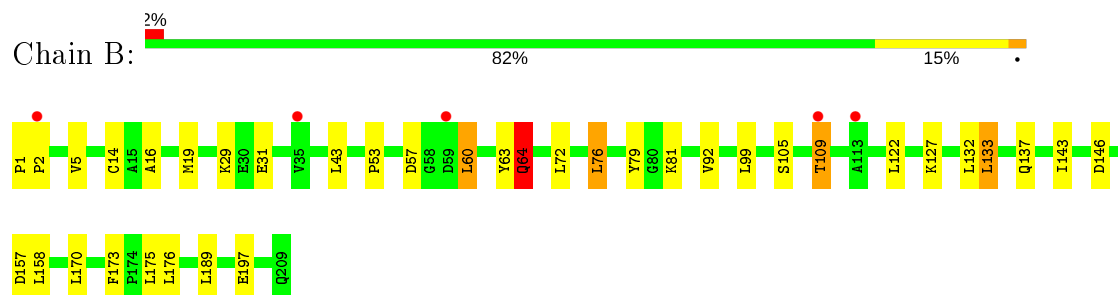
### 3 Residue-property plots [i](#)

These plots are drawn for all protein, RNA and DNA chains in the entry. The first graphic for a chain summarises the proportions of the various outlier classes displayed in the second graphic. The second graphic shows the sequence view annotated by issues in geometry and electron density. Residues are color-coded according to the number of geometric quality criteria for which they contain at least one outlier: green = 0, yellow = 1, orange = 2 and red = 3 or more. A red dot above a residue indicates a poor fit to the electron density ( $RSRZ > 2$ ). Stretches of 2 or more consecutive residues without any outlier are shown as a green connector. Residues present in the sample, but not in the model, are shown in grey.

#### • Molecule 1: Glutathione S-transferase P



#### • Molecule 1: Glutathione S-transferase P



## 4 Data and refinement statistics

Property	Value	Source
Space group	C 1 2 1	Depositor
Cell constants a, b, c, $\alpha$ , $\beta$ , $\gamma$	77.84Å 89.93Å 69.07Å 90.00° 97.70° 90.00°	Depositor
Resolution (Å)	14.92 – 1.90 14.92 – 1.90	Depositor EDS
% Data completeness (in resolution range)	89.9 (14.92-1.90) 90.0 (14.92-1.90)	Depositor EDS
$R_{merge}$	0.04	Depositor
$R_{sym}$	(Not available)	Depositor
$\langle I/\sigma(I) \rangle$ <sup>1</sup>	2.22 (at 1.89Å)	Xtriage
Refinement program	REFMAC	Depositor
R, $R_{free}$	0.176 , 0.233 0.176 , 0.234	Depositor DCC
$R_{free}$ test set	1654 reflections (4.96%)	wwPDB-VP
Wilson B-factor (Å <sup>2</sup> )	19.2	Xtriage
Anisotropy	0.083	Xtriage
Bulk solvent $k_{sol}$ (e/Å <sup>3</sup> ), $B_{sol}$ (Å <sup>2</sup> )	0.43 , 56.6	EDS
L-test for twinning <sup>2</sup>	$\langle  L  \rangle = 0.50$ , $\langle L^2 \rangle = 0.33$	Xtriage
Estimated twinning fraction	No twinning to report.	Xtriage
$F_o, F_c$ correlation	0.95	EDS
Total number of atoms	3651	wwPDB-VP
Average B, all atoms (Å <sup>2</sup> )	18.0	wwPDB-VP

Xtriage's analysis on translational NCS is as follows: *The largest off-origin peak in the Patterson function is 6.64% of the height of the origin peak. No significant pseudotranslation is detected.*

<sup>1</sup>Intensities estimated from amplitudes.

<sup>2</sup>Theoretical values of  $\langle |L| \rangle$ ,  $\langle L^2 \rangle$  for acentric reflections are 0.5, 0.333 respectively for untwinned datasets, and 0.375, 0.2 for perfectly twinned datasets.

## 5 Model quality [i](#)

### 5.1 Standard geometry [i](#)

Bond lengths and bond angles in the following residue types are not validated in this section: CBL, MES, CL

The Z score for a bond length (or angle) is the number of standard deviations the observed value is removed from the expected value. A bond length (or angle) with  $|Z| > 5$  is considered an outlier worth inspection. RMSZ is the root-mean-square of all Z scores of the bond lengths (or angles).

Mol	Chain	Bond lengths		Bond angles	
		RMSZ	$\# Z  > 5$	RMSZ	$\# Z  > 5$
1	A	0.75	0/1673	0.78	3/2269 (0.1%)
1	B	0.76	0/1673	0.73	0/2269
All	All	0.76	0/3346	0.76	3/4538 (0.1%)

There are no bond length outliers.

All (3) bond angle outliers are listed below:

Mol	Chain	Res	Type	Atoms	Z	Observed(°)	Ideal(°)
1	A	74	ARG	NE-CZ-NH2	-5.77	117.41	120.30
1	A	11	ARG	NE-CZ-NH2	-5.29	117.66	120.30
1	A	60	LEU	CB-CG-CD2	5.23	119.89	111.00

There are no chirality outliers.

There are no planarity outliers.

### 5.2 Too-close contacts [i](#)

In the following table, the Non-H and H(model) columns list the number of non-hydrogen atoms and hydrogen atoms in the chain respectively. The H(added) column lists the number of hydrogen atoms added and optimized by MolProbity. The Clashes column lists the number of clashes within the asymmetric unit, whereas Symm-Clashes lists symmetry related clashes.

Mol	Chain	Non-H	H(model)	H(added)	Clashes	Symm-Clashes
1	A	1638	0	1643	19	0
1	B	1638	0	1643	24	0
2	A	1	0	0	1	0
3	A	12	0	12	2	0
3	B	12	0	12	0	0
4	B	19	0	18	1	0

*Continued on next page...*

*Continued from previous page...*

Mol	Chain	Non-H	H(model)	H(added)	Clashes	Symm-Clashes
5	A	173	0	0	1	0
5	B	158	0	0	2	0
All	All	3651	0	3328	43	0

The all-atom clashscore is defined as the number of clashes found per 1000 atoms (including hydrogen atoms). The all-atom clashscore for this structure is 6.

All (43) close contacts within the same asymmetric unit are listed below, sorted by their clash magnitude.

Atom-1	Atom-2	Interatomic distance (Å)	Clash overlap (Å)
1:A:105:SER:O	1:A:109:THR:HB	1.90	0.71
1:B:133:LEU:HD13	1:B:143:ILE:HD12	1.74	0.68
1:B:1:PRO:H2	1:B:2:PRO:HA	1.59	0.68
1:B:105:SER:O	1:B:109:THR:HB	1.94	0.68
1:B:1:PRO:N	1:B:2:PRO:HA	2.10	0.65
1:B:29:LYS:HE3	1:B:31:GLU:OE1	2.00	0.62
1:B:127:LYS:HG2	1:B:173:PHE:HE1	1.65	0.61
1:B:1:PRO:HB2	1:B:57:ASP:OD1	2.00	0.60
1:A:197:GLU:OE1	3:A:211:MES:H31	2.02	0.60
1:B:19:MET:HE1	1:B:157:ASP:HB2	1.84	0.58
1:A:72:LEU:O	1:A:76:LEU:HB2	2.04	0.57
1:A:99:LEU:HD23	1:A:158:LEU:HD21	1.87	0.55
1:A:1:PRO:N	5:A:337:HOH:O	2.40	0.55
1:A:133:LEU:HD13	1:A:143:ILE:HD12	1.90	0.54
1:B:127:LYS:HG2	1:B:173:PHE:CE1	2.42	0.54
1:B:137:GLN:HE22	1:B:146:ASP:HB3	1.72	0.54
1:A:63:TYR:O	1:A:64:GLN:HB2	2.10	0.52
1:B:63:TYR:O	1:B:64:GLN:HB2	2.10	0.52
1:A:122:LEU:HD22	1:A:126:LEU:HG	1.91	0.50
1:A:110:ASN:HD22	1:A:110:ASN:N	2.10	0.50
1:A:197:GLU:CD	3:A:211:MES:H31	2.32	0.50
1:B:1:PRO:H2	1:B:2:PRO:CA	2.24	0.50
1:A:92:VAL:HG22	1:A:132:LEU:HD13	1.94	0.50
1:B:81:LYS:NZ	5:B:521:HOH:O	2.44	0.50
1:B:133:LEU:HD22	1:B:176:LEU:HD23	1.95	0.49
1:B:99:LEU:HD23	1:B:158:LEU:HD21	1.95	0.49
1:B:19:MET:CE	1:B:157:ASP:HB2	2.43	0.48
1:A:127:LYS:HE3	1:A:173:PHE:HE1	1.78	0.48
1:B:14:CYS:SG	1:B:53:PRO:HB3	2.54	0.48
1:A:20:LEU:C	1:A:20:LEU:HD23	2.34	0.48
1:A:84:GLN:HG3	1:B:60:LEU:HG	1.97	0.47

*Continued on next page...*



Continued from previous page...

Atom-1	Atom-2	Interatomic distance (Å)	Clash overlap (Å)
1:B:133:LEU:HD13	1:B:143:ILE:CD1	2.44	0.47
1:B:16:ALA:HA	1:B:19:MET:HE3	1.97	0.46
1:B:127:LYS:HD3	5:B:484:HOH:O	2.16	0.44
1:B:72:LEU:O	1:B:76:LEU:HB2	2.18	0.43
1:A:14:CYS:SG	1:A:53:PRO:HB3	2.59	0.42
1:B:92:VAL:HG22	1:B:132:LEU:HD13	2.01	0.42
1:B:1:PRO:N	1:B:2:PRO:CA	2.78	0.41
1:A:52:LEU:HB3	1:A:53:PRO:HA	2.02	0.41
1:A:133:LEU:HD13	1:A:143:ILE:CD1	2.51	0.41
1:A:13:ARG:HG3	2:A:210:CL:CL	2.57	0.41
1:A:38:TRP:HZ3	1:A:43:LEU:HD13	1.87	0.41
4:B:211:CBL:H121	4:B:211:CBL:H6	1.84	0.41

There are no symmetry-related clashes.

## 5.3 Torsion angles ⓘ

### 5.3.1 Protein backbone ⓘ

In the following table, the Percentiles column shows the percent Ramachandran outliers of the chain as a percentile score with respect to all X-ray entries followed by that with respect to entries of similar resolution.

The Analysed column shows the number of residues for which the backbone conformation was analysed, and the total number of residues.

Mol	Chain	Analysed	Favoured	Allowed	Outliers	Percentiles	
1	A	207/209 (99%)	202 (98%)	4 (2%)	1 (0%)	29	18
1	B	207/209 (99%)	201 (97%)	5 (2%)	1 (0%)	29	18
All	All	414/418 (99%)	403 (97%)	9 (2%)	2 (0%)	29	18

All (2) Ramachandran outliers are listed below:

Mol	Chain	Res	Type
1	B	64	GLN
1	A	64	GLN

### 5.3.2 Protein sidechains ⓘ

In the following table, the Percentiles column shows the percent sidechain outliers of the chain as a percentile score with respect to all X-ray entries followed by that with respect to entries of similar resolution.

The Analysed column shows the number of residues for which the sidechain conformation was analysed, and the total number of residues.

Mol	Chain	Analysed	Rotameric	Outliers	Percentiles	
1	A	176/176 (100%)	160 (91%)	16 (9%)	9	3
1	B	176/176 (100%)	163 (93%)	13 (7%)	13	6
All	All	352/352 (100%)	323 (92%)	29 (8%)	11	4

All (29) residues with a non-rotameric sidechain are listed below:

Mol	Chain	Res	Type
1	A	10	VAL
1	A	43	LEU
1	A	60	LEU
1	A	62	LEU
1	A	72	LEU
1	A	76	LEU
1	A	79	TYR
1	A	81	LYS
1	A	109	THR
1	A	110	ASN
1	A	122	LEU
1	A	133	LEU
1	A	170	LEU
1	A	175	LEU
1	A	189	LEU
1	A	201	LEU
1	B	5	VAL
1	B	43	LEU
1	B	60	LEU
1	B	64	GLN
1	B	76	LEU
1	B	79	TYR
1	B	109	THR
1	B	122	LEU
1	B	133	LEU
1	B	170	LEU
1	B	175	LEU

*Continued on next page...*

*Continued from previous page...*

Mol	Chain	Res	Type
1	B	189	LEU
1	B	197	GLU

Some sidechains can be flipped to improve hydrogen bonding and reduce clashes. All (9) such sidechains are listed below:

Mol	Chain	Res	Type
1	A	83	GLN
1	A	110	ASN
1	A	137	GLN
1	A	204	ASN
1	B	64	GLN
1	B	110	ASN
1	B	137	GLN
1	B	147	GLN
1	B	204	ASN

### 5.3.3 RNA [i](#)

There are no RNA molecules in this entry.

## 5.4 Non-standard residues in protein, DNA, RNA chains [i](#)

There are no non-standard protein/DNA/RNA residues in this entry.

## 5.5 Carbohydrates [i](#)

There are no carbohydrates in this entry.

## 5.6 Ligand geometry [i](#)

Of 4 ligands modelled in this entry, 1 is monoatomic - leaving 3 for Mogul analysis.

In the following table, the Counts columns list the number of bonds (or angles) for which Mogul statistics could be retrieved, the number of bonds (or angles) that are observed in the model and the number of bonds (or angles) that are defined in the Chemical Component Dictionary. The Link column lists molecule types, if any, to which the group is linked. The Z score for a bond length (or angle) is the number of standard deviations the observed value is removed from the expected value. A bond length (or angle) with  $|Z| > 2$  is considered an outlier worth inspection. RMSZ is the root-mean-square of all Z scores of the bond lengths (or angles).

Mol	Type	Chain	Res	Link	Bond lengths			Bond angles		
					Counts	RMSZ	# Z  > 2	Counts	RMSZ	# Z  > 2
3	MES	A	211	-	12,12,12	1.87	1 (8%)	14,16,16	2.51	6 (42%)
3	MES	B	210	-	12,12,12	2.04	1 (8%)	14,16,16	3.05	6 (42%)
4	CBL	B	211	-	16,19,19	0.49	0	19,23,23	0.74	0

In the following table, the Chirals column lists the number of chiral outliers, the number of chiral centers analysed, the number of these observed in the model and the number defined in the Chemical Component Dictionary. Similar counts are reported in the Torsion and Rings columns. '-' means no outliers of that kind were identified.

Mol	Type	Chain	Res	Link	Chirals	Torsions	Rings
3	MES	A	211	-	-	4/6/14/14	0/1/1/1
3	MES	B	210	-	-	4/6/14/14	0/1/1/1
4	CBL	B	211	-	-	0/14/16/16	0/1/1/1

All (2) bond length outliers are listed below:

Mol	Chain	Res	Type	Atoms	Z	Observed(Å)	Ideal(Å)
3	B	210	MES	C8-S	-6.91	1.67	1.77
3	A	211	MES	C8-S	-6.29	1.68	1.77

All (12) bond angle outliers are listed below:

Mol	Chain	Res	Type	Atoms	Z	Observed(°)	Ideal(°)
3	B	210	MES	O2S-S-C8	6.87	115.19	106.92
3	A	211	MES	C5-N4-C3	5.20	120.54	108.83
3	B	210	MES	C7-N4-C5	5.03	124.10	111.23
3	B	210	MES	C5-N4-C3	4.82	119.69	108.83
3	A	211	MES	O2S-S-C8	3.86	111.56	106.92
3	A	211	MES	C7-N4-C5	3.63	120.52	111.23
3	B	210	MES	C6-C5-N4	-3.28	105.13	110.10
3	A	211	MES	C7-N4-C3	2.83	118.48	111.23
3	B	210	MES	O3S-S-C8	2.64	110.04	105.77
3	A	211	MES	C6-C5-N4	-2.53	106.27	110.10
3	A	211	MES	O1S-S-C8	2.50	109.92	106.92
3	B	210	MES	O3S-S-O2S	-2.13	106.06	111.27

There are no chirality outliers.

All (8) torsion outliers are listed below:

Mol	Chain	Res	Type	Atoms
3	A	211	MES	C8-C7-N4-C3
3	B	210	MES	C8-C7-N4-C5
3	A	211	MES	C7-C8-S-O3S
3	B	210	MES	C7-C8-S-O3S
3	A	211	MES	C7-C8-S-O1S
3	A	211	MES	C7-C8-S-O2S
3	B	210	MES	C7-C8-S-O1S
3	B	210	MES	C7-C8-S-O2S

There are no ring outliers.

2 monomers are involved in 3 short contacts:

Mol	Chain	Res	Type	Clashes	Symm-Clashes
3	A	211	MES	2	0
4	B	211	CBL	1	0

## 5.7 Other polymers [i](#)

There are no such residues in this entry.

## 5.8 Polymer linkage issues [i](#)

There are no chain breaks in this entry.

## 6 Fit of model and data [i](#)

### 6.1 Protein, DNA and RNA chains [i](#)

In the following table, the column labelled ‘#RSRZ> 2’ contains the number (and percentage) of RSRZ outliers, followed by percent RSRZ outliers for the chain as percentile scores relative to all X-ray entries and entries of similar resolution. The OWAB column contains the minimum, median, 95<sup>th</sup> percentile and maximum values of the occupancy-weighted average B-factor per residue. The column labelled ‘Q< 0.9’ lists the number of (and percentage) of residues with an average occupancy less than 0.9.

Mol	Chain	Analysed	<RSRZ>	#RSRZ>2	OWAB(Å <sup>2</sup> )	Q<0.9
1	A	209/209 (100%)	-0.38	2 (0%) 82 84	9, 16, 27, 34	0
1	B	209/209 (100%)	-0.26	5 (2%) 59 62	9, 17, 31, 39	0
All	All	418/418 (100%)	-0.32	7 (1%) 70 72	9, 17, 29, 39	0

All (7) RSRZ outliers are listed below:

Mol	Chain	Res	Type	RSRZ
1	B	35	VAL	3.4
1	B	2	PRO	3.3
1	B	59	ASP	2.7
1	A	1	PRO	2.3
1	B	113	ALA	2.3
1	A	35	VAL	2.3
1	B	109	THR	2.0

### 6.2 Non-standard residues in protein, DNA, RNA chains [i](#)

There are no non-standard protein/DNA/RNA residues in this entry.

### 6.3 Carbohydrates [i](#)

There are no carbohydrates in this entry.

### 6.4 Ligands [i](#)

In the following table, the Atoms column lists the number of modelled atoms in the group and the number defined in the chemical component dictionary. The B-factors column lists the minimum, median, 95<sup>th</sup> percentile and maximum values of B factors of atoms in the group. The column labelled ‘Q< 0.9’ lists the number of atoms with occupancy less than 0.9.

Mol	Type	Chain	Res	Atoms	RSCC	RSR	B-factors( $\text{\AA}^2$ )	Q<0.9
4	CBL	B	211	19/19	0.61	0.32	18,31,41,41	19
3	MES	B	210	12/12	0.91	0.13	22,25,31,32	12
3	MES	A	211	12/12	0.96	0.10	22,26,31,34	0
2	CL	A	210	1/1	0.96	0.05	35,35,35,35	1

## 6.5 Other polymers [i](#)

There are no such residues in this entry.