



# Full wwPDB X-ray Structure Validation Report ⓘ

Dec 8, 2020 – 01:59 AM EST

PDB ID : 6CSW  
Title : Crystal Structure of the Human vaccinia-related kinase bound to a N-methyl-N-propyl-dihydropteridine inhibitor  
Authors : dos Reis, C.V.; de Souza, G.P.; Counago, R.M.; Chiodi, C.G.; Azevedo, A.; Guimaraes, C.; Mascarello, A.; Gama, F.; Ferreira, M.; Massirer, K.B.; Arruda, P.; Edwards, A.M.; Elkins, J.M.; Structural Genomics Consortium (SGC)  
Deposited on : 2018-03-21  
Resolution : 2.25 Å(reported)

This is a Full wwPDB X-ray Structure Validation Report for a publicly released PDB entry.

We welcome your comments at [validation@mail.wwpdb.org](mailto:validation@mail.wwpdb.org)

A user guide is available at

<https://www.wwpdb.org/validation/2017/XrayValidationReportHelp>

with specific help available everywhere you see the ⓘ symbol.

---

The following versions of software and data (see [references ⓘ](#)) were used in the production of this report:

MolProbity	:	4.02b-467
Mogul	:	1.8.5 (274361), CSD as541be (2020)
Xtriage (Phenix)	:	1.13
EDS	:	2.15.1
buster-report	:	1.1.7 (2018)
Percentile statistics	:	20191225.v01 (using entries in the PDB archive December 25th 2019)
Refmac	:	5.8.0158
CCP4	:	7.0.044 (Gargrove)
Ideal geometry (proteins)	:	Engh & Huber (2001)
Ideal geometry (DNA, RNA)	:	Parkinson et al. (1996)
Validation Pipeline (wwPDB-VP)	:	2.15.1



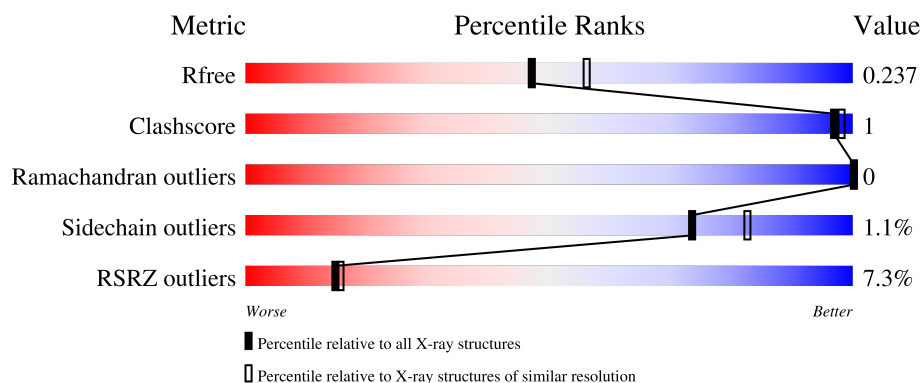
# 1 Overall quality at a glance

The following experimental techniques were used to determine the structure:

*X-RAY DIFFRACTION*

The reported resolution of this entry is 2.25 Å.

Percentile scores (ranging between 0-100) for global validation metrics of the entry are shown in the following graphic. The table shows the number of entries on which the scores are based.



Metric	Whole archive (#Entries)	Similar resolution (#Entries, resolution range(Å))
$R_{free}$	130704	1377 (2.26-2.26)
Clashscore	141614	1487 (2.26-2.26)
Ramachandran outliers	138981	1449 (2.26-2.26)
Sidechain outliers	138945	1450 (2.26-2.26)
RSRZ outliers	127900	1356 (2.26-2.26)

The table below summarises the geometric issues observed across the polymeric chains and their fit to the electron density. The red, orange, yellow and green segments of the lower bar indicate the fraction of residues that contain outliers for  $\geq 3$ , 2, 1 and 0 types of geometric quality criteria respectively. A grey segment represents the fraction of residues that are not modelled. The numeric value for each fraction is indicated below the corresponding segment, with a dot representing fractions  $\leq 5\%$ . The upper red bar (where present) indicates the fraction of residues that have poor fit to the electron density. The numeric value is given above the bar.

Mol	Chain	Length	Quality of chain
1	A	364	<div> <div>4%</div> <div>84%</div> <div>13%</div> </div>
1	B	364	<div> <div>9%</div> <div>84%</div> <div>15%</div> </div>
1	C	364	<div> <div>5%</div> <div>84%</div> <div>12%</div> </div>
1	D	364	<div> <div>7%</div> <div>84%</div> <div>14%</div> </div>



## 2 Entry composition

There are 8 unique types of molecules in this entry. The entry contains 10829 atoms, of which 0 are hydrogens and 0 are deuteriums.

In the tables below, the ZeroOcc column contains the number of atoms modelled with zero occupancy, the AltConf column contains the number of residues with at least one atom in alternate conformation and the Trace column contains the number of residues modelled with at most 2 atoms.

- Molecule 1 is a protein called Serine/threonine-protein kinase VRK1.

Mol	Chain	Residues	Atoms					ZeroOcc	AltConf	Trace
1	A	316	Total	C	N	O	S	0	4	0
			2534	1616	430	475	13			
1	B	308	Total	C	N	O	S	0	3	0
			2459	1576	428	443	12			
1	C	319	Total	C	N	O	S	0	5	0
			2562	1634	441	474	13			
1	D	312	Total	C	N	O	S	0	4	0
			2490	1592	424	461	13			

There are 52 discrepancies between the modelled and reference sequences:

Chain	Residue	Modelled	Actual	Comment	Reference
A	1	SER	-	expression tag	UNP Q99986
A	2	MET	-	expression tag	UNP Q99986
A	34	ALA	LYS	engineered mutation	UNP Q99986
A	35	ALA	LYS	engineered mutation	UNP Q99986
A	36	ALA	GLU	engineered mutation	UNP Q99986
A	212	ALA	GLU	engineered mutation	UNP Q99986
A	214	ALA	LYS	engineered mutation	UNP Q99986
A	215	ALA	GLU	engineered mutation	UNP Q99986
A	292	ALA	GLU	engineered mutation	UNP Q99986
A	293	ALA	LYS	engineered mutation	UNP Q99986
A	295	ALA	LYS	engineered mutation	UNP Q99986
A	359	ALA	LYS	engineered mutation	UNP Q99986
A	360	ALA	LYS	engineered mutation	UNP Q99986
B	1	SER	-	expression tag	UNP Q99986
B	2	MET	-	expression tag	UNP Q99986
B	34	ALA	LYS	engineered mutation	UNP Q99986
B	35	ALA	LYS	engineered mutation	UNP Q99986
B	36	ALA	GLU	engineered mutation	UNP Q99986
B	212	ALA	GLU	engineered mutation	UNP Q99986
B	214	ALA	LYS	engineered mutation	UNP Q99986
B	215	ALA	GLU	engineered mutation	UNP Q99986

*Continued on next page...*

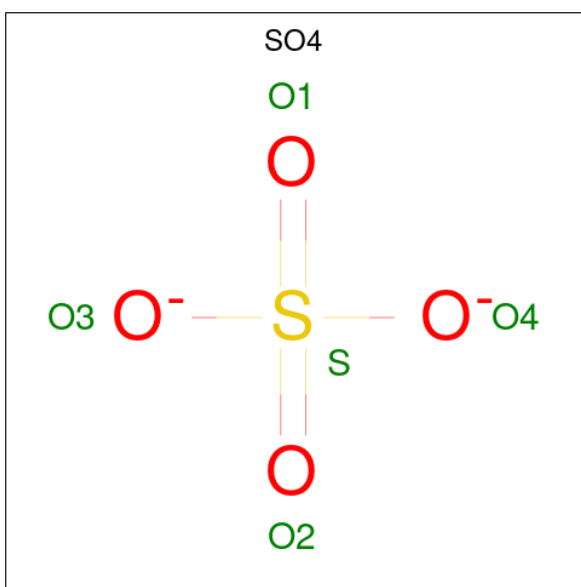


*Continued from previous page...*

Chain	Residue	Modelled	Actual	Comment	Reference
B	292	ALA	GLU	engineered mutation	UNP Q99986
B	293	ALA	LYS	engineered mutation	UNP Q99986
B	295	ALA	LYS	engineered mutation	UNP Q99986
B	359	ALA	LYS	engineered mutation	UNP Q99986
B	360	ALA	LYS	engineered mutation	UNP Q99986
C	1	SER	-	expression tag	UNP Q99986
C	2	MET	-	expression tag	UNP Q99986
C	34	ALA	LYS	engineered mutation	UNP Q99986
C	35	ALA	LYS	engineered mutation	UNP Q99986
C	36	ALA	GLU	engineered mutation	UNP Q99986
C	212	ALA	GLU	engineered mutation	UNP Q99986
C	214	ALA	LYS	engineered mutation	UNP Q99986
C	215	ALA	GLU	engineered mutation	UNP Q99986
C	292	ALA	GLU	engineered mutation	UNP Q99986
C	293	ALA	LYS	engineered mutation	UNP Q99986
C	295	ALA	LYS	engineered mutation	UNP Q99986
C	359	ALA	LYS	engineered mutation	UNP Q99986
C	360	ALA	LYS	engineered mutation	UNP Q99986
D	1	SER	-	expression tag	UNP Q99986
D	2	MET	-	expression tag	UNP Q99986
D	34	ALA	LYS	engineered mutation	UNP Q99986
D	35	ALA	LYS	engineered mutation	UNP Q99986
D	36	ALA	GLU	engineered mutation	UNP Q99986
D	212	ALA	GLU	engineered mutation	UNP Q99986
D	214	ALA	LYS	engineered mutation	UNP Q99986
D	215	ALA	GLU	engineered mutation	UNP Q99986
D	292	ALA	GLU	engineered mutation	UNP Q99986
D	293	ALA	LYS	engineered mutation	UNP Q99986
D	295	ALA	LYS	engineered mutation	UNP Q99986
D	359	ALA	LYS	engineered mutation	UNP Q99986
D	360	ALA	LYS	engineered mutation	UNP Q99986

- Molecule 2 is SULFATE ION (three-letter code: SO4) (formula: O<sub>4</sub>S).

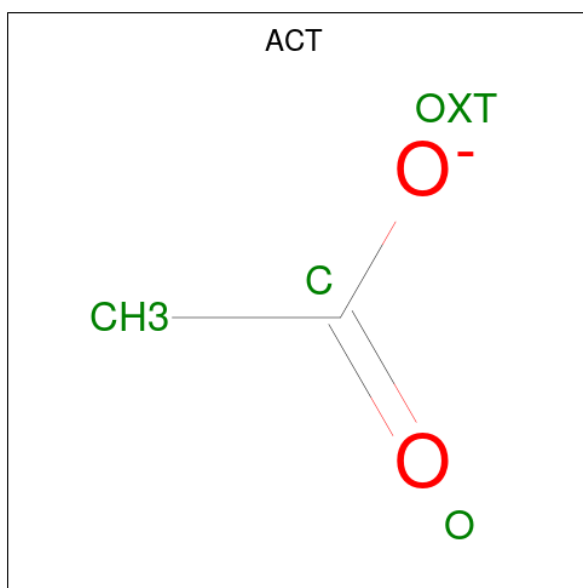




Mol	Chain	Residues	Atoms			ZeroOcc	AltConf
2	A	1	Total	O	S	0	0
			5	4	1		
2	A	1	Total	O	S	0	0
			5	4	1		
2	B	1	Total	O	S	0	0
			5	4	1		
2	B	1	Total	O	S	0	0
			5	4	1		
2	B	1	Total	O	S	0	0
			5	4	1		
2	C	1	Total	O	S	0	0
			5	4	1		
2	C	1	Total	O	S	0	0
			5	4	1		
2	C	1	Total	O	S	0	0
			5	4	1		
2	D	1	Total	O	S	0	0
			5	4	1		
2	D	1	Total	O	S	0	0
			5	4	1		
2	D	1	Total	O	S	0	0
			5	4	1		
2	D	1	Total	O	S	0	0
			5	4	1		
2	D	1	Total	O	S	0	0
			5	4	1		

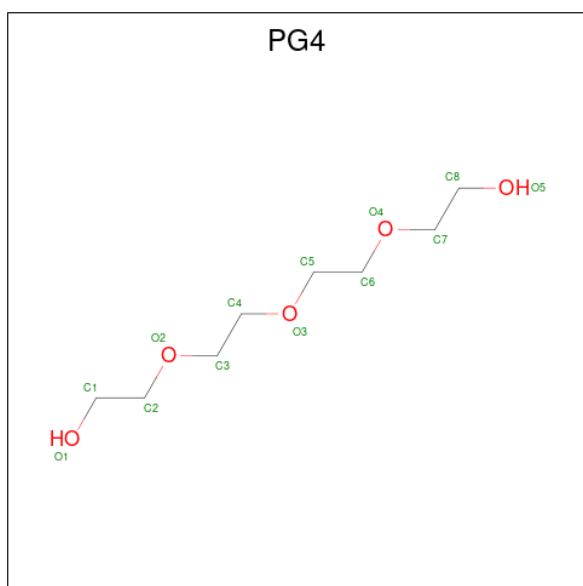


- Molecule 3 is ACETATE ION (three-letter code: ACT) (formula:  $C_2H_3O_2$ ).



Mol	Chain	Residues	Atoms			ZeroOcc	AltConf
3	A	1	Total	C	O	0	0
			4	2	2		
3	D	1	Total	C	O	0	0
			4	2	2		

- Molecule 4 is TETRAETHYLENE GLYCOL (three-letter code: PG4) (formula:  $C_8H_{18}O_5$ ).



Mol	Chain	Residues	Atoms			ZeroOcc	AltConf
4	A	1	Total	C	O	0	0
			13	8	5		

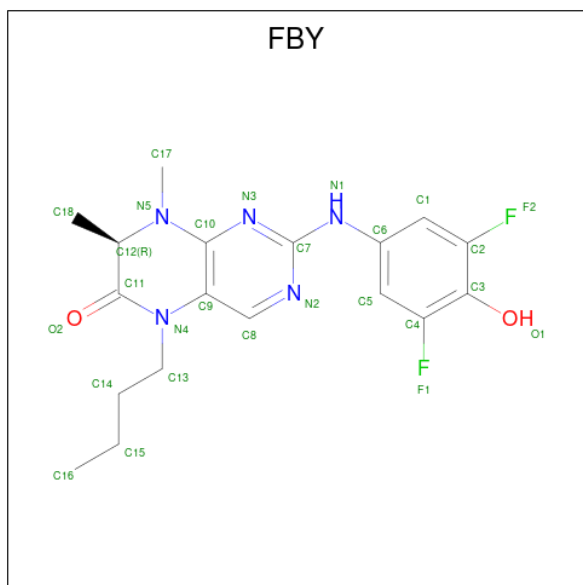
*Continued on next page...*



Continued from previous page...

Mol	Chain	Residues	Atoms			ZeroOcc	AltConf
4	A	1	Total	C	O	0	0
			13	8	5		

- Molecule 5 is (7R)-5-butyl-2-[(3,5-difluoro-4-hydroxyphenyl)amino]-7,8-dimethyl-7,8-dihydropteridin-6(5H)-one (three-letter code: FBY) (formula:  $C_{18}H_{21}F_2N_5O_2$ ).



Mol	Chain	Residues	Atoms					ZeroOcc	AltConf
5	B	1	Total	C	F	N	O	0	0
			27	18	2	5	2		
5	D	1	Total	C	F	N	O	0	0
			27	18	2	5	2		

- Molecule 6 is GLYCEROL (three-letter code: GOL) (formula:  $C_3H_8O_3$ ).





Mol	Chain	Residues	Atoms			ZeroOcc	AltConf
6	B	1	Total	C	O	0	0
			6	3	3		
6	B	1	Total	C	O	0	0
			6	3	3		
6	B	1	Total	C	O	0	0
			6	3	3		
6	B	1	Total	C	O	0	0
			6	3	3		
6	C	1	Total	C	O	0	0
			6	3	3		
6	C	1	Total	C	O	0	0
			6	3	3		
6	C	1	Total	C	O	0	0
			6	3	3		
6	C	1	Total	C	O	0	0
			6	3	3		
6	D	1	Total	C	O	0	0
			6	3	3		
6	D	1	Total	C	O	0	0
			6	3	3		
6	D	1	Total	C	O	0	0
			6	3	3		
6	D	1	Total	C	O	0	0
			6	3	3		
6	D	1	Total	C	O	0	0
			6	3	3		

*Continued on next page...*



*Continued from previous page...*

Mol	Chain	Residues	Atoms			ZeroOcc	AltConf
6	D	1	Total	C	O	0	0
			6	3	3		

- Molecule 7 is CHLORIDE ION (three-letter code: CL) (formula: Cl).

Mol	Chain	Residues	Atoms		ZeroOcc	AltConf
7	D	1	Total	Cl	0	0
			1	1		
7	C	1	Total	Cl	0	0
			1	1		

- Molecule 8 is water.


Mol	Chain	Residues	Atoms		ZeroOcc	AltConf
8	A	134	Total	O	0	0
			134	134		
8	B	108	Total	O	0	0
			108	108		
8	C	166	Total	O	0	0
			166	166		
8	D	126	Total	O	0	0
			126	126		

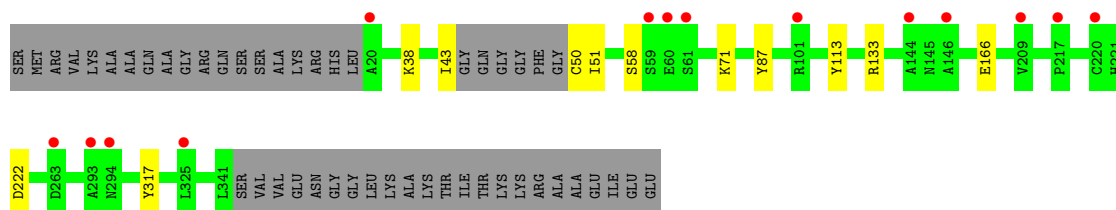


### 3 Residue-property plots


These plots are drawn for all protein, RNA, DNA and oligosaccharide chains in the entry. The first graphic for a chain summarises the proportions of the various outlier classes displayed in the second graphic. The second graphic shows the sequence view annotated by issues in geometry and electron density. Residues are color-coded according to the number of geometric quality criteria for which they contain at least one outlier: green = 0, yellow = 1, orange = 2 and red = 3 or more. A red dot above a residue indicates a poor fit to the electron density ( $RSRZ > 2$ ). Stretches of 2 or more consecutive residues without any outlier are shown as a green connector. Residues present in the sample, but not in the model, are shown in grey.

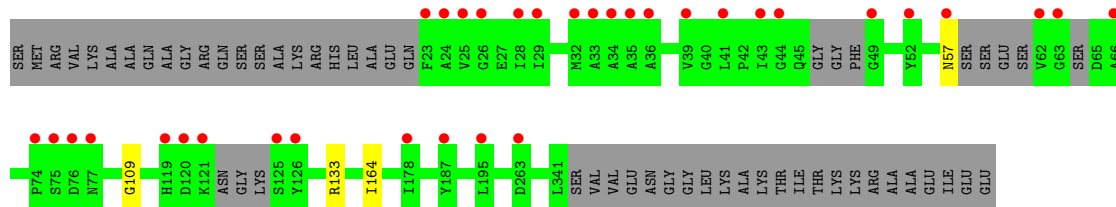
- Molecule 1: Serine/threonine-protein kinase VRK1

Chain A: 




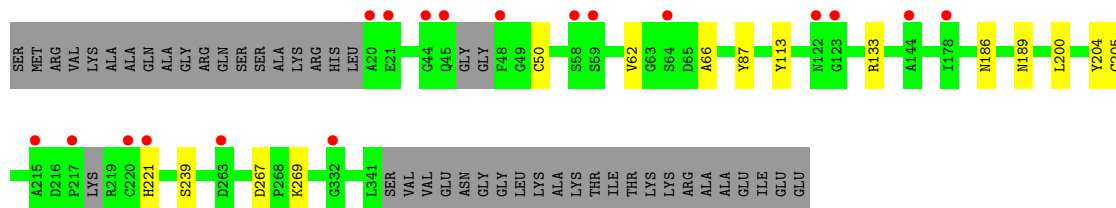
- Molecule 1: Serine/threonine-protein kinase VRK1

Chain B: 




- Molecule 1: Serine/threonine-protein kinase VRK1

Chain C: 

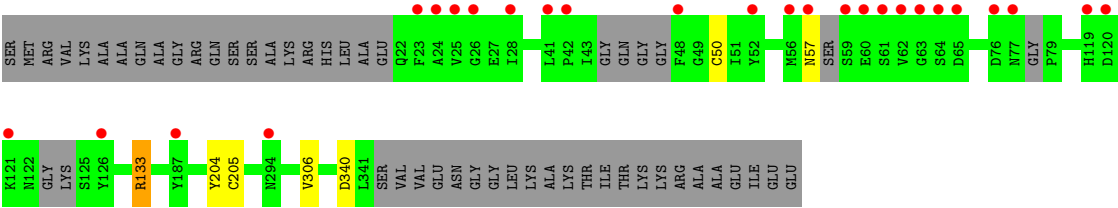


- Molecule 1: Serine/threonine-protein kinase VRK1

Chain D: 









## 4 Data and refinement statistics

Property	Value	Source
Space group	P 21 21 21	Depositor
Cell constants a, b, c, $\alpha$ , $\beta$ , $\gamma$	91.83Å 96.99Å 191.67Å 90.00° 90.00° 90.00°	Depositor
Resolution (Å)	34.80 – 2.25 34.80 – 2.25	Depositor EDS
% Data completeness (in resolution range)	100.0 (34.80-2.25) 100.0 (34.80-2.25)	Depositor EDS
$R_{merge}$	0.19	Depositor
$R_{sym}$	(Not available)	Depositor
$\langle I/\sigma(I) \rangle$ <sup>1</sup>	1.88 (at 2.24Å)	Xtriage
Refinement program	REFMAC 5.8.0218	Depositor
R, $R_{free}$	0.188 , 0.233 0.195 , 0.237	Depositor DCC
$R_{free}$ test set	3987 reflections (4.87%)	wwPDB-VP
Wilson B-factor (Å <sup>2</sup> )	26.6	Xtriage
Anisotropy	0.973	Xtriage
Bulk solvent $k_{sol}$ (e/Å <sup>3</sup> ), $B_{sol}$ (Å <sup>2</sup> )	0.38 , 48.6	EDS
L-test for twinning <sup>2</sup>	$\langle  L  \rangle = 0.50$ , $\langle L^2 \rangle = 0.34$	Xtriage
Estimated twinning fraction	No twinning to report.	Xtriage
$F_o, F_c$ correlation	0.95	EDS
Total number of atoms	10829	wwPDB-VP
Average B, all atoms (Å <sup>2</sup> )	37.0	wwPDB-VP

Xtriage's analysis on translational NCS is as follows: *The largest off-origin peak in the Patterson function is 3.16% of the height of the origin peak. No significant pseudotranslation is detected.*

<sup>1</sup>Intensities estimated from amplitudes.

<sup>2</sup>Theoretical values of  $\langle |L| \rangle$ ,  $\langle L^2 \rangle$  for acentric reflections are 0.5, 0.333 respectively for untwinned datasets, and 0.375, 0.2 for perfectly twinned datasets.



## 5 Model quality [i](#)

### 5.1 Standard geometry [i](#)

Bond lengths and bond angles in the following residue types are not validated in this section: GOL, CL, FBY, PG4, SO4, ACT

The Z score for a bond length (or angle) is the number of standard deviations the observed value is removed from the expected value. A bond length (or angle) with  $|Z| > 5$  is considered an outlier worth inspection. RMSZ is the root-mean-square of all Z scores of the bond lengths (or angles).

Mol	Chain	Bond lengths		Bond angles	
		RMSZ	$\# Z  > 5$	RMSZ	$\# Z  > 5$
1	A	0.49	0/2596	0.63	0/3519
1	B	0.45	0/2517	0.61	0/3402
1	C	0.48	0/2623	0.64	0/3549
1	D	0.48	0/2549	0.63	0/3452
All	All	0.48	0/10285	0.63	0/13922

There are no bond length outliers.

There are no bond angle outliers.

There are no chirality outliers.

There are no planarity outliers.

### 5.2 Too-close contacts [i](#)

In the following table, the Non-H and H(model) columns list the number of non-hydrogen atoms and hydrogen atoms in the chain respectively. The H(added) column lists the number of hydrogen atoms added and optimized by MolProbity. The Clashes column lists the number of clashes within the asymmetric unit, whereas Symm-Clashes lists symmetry-related clashes.

Mol	Chain	Non-H	H(model)	H(added)	Clashes	Symm-Clashes
1	A	2534	0	2452	5	0
1	B	2459	0	2408	1	0
1	C	2562	0	2502	8	0
1	D	2490	0	2395	4	0
2	A	10	0	0	0	0
2	B	15	0	0	0	0
2	C	15	0	0	0	0
2	D	30	0	0	0	0
3	A	4	0	3	0	0

*Continued on next page...*



*Continued from previous page...*

Mol	Chain	Non-H	H(model)	H(added)	Clashes	Symm-Clashes
3	D	4	0	3	0	0
4	A	26	0	36	0	0
5	B	27	0	0	0	0
5	D	27	0	0	0	0
6	B	24	0	32	0	0
6	C	24	0	32	0	0
6	D	42	0	56	2	0
7	C	1	0	0	1	0
7	D	1	0	0	0	0
8	A	134	0	0	0	0
8	B	108	0	0	0	0
8	C	166	0	0	0	0
8	D	126	0	0	0	0
All	All	10829	0	9919	18	0

The all-atom clashscore is defined as the number of clashes found per 1000 atoms (including hydrogen atoms). The all-atom clashscore for this structure is 1.

All (18) close contacts within the same asymmetric unit are listed below, sorted by their clash magnitude.

Atom-1	Atom-2	Interatomic distance (Å)	Clash overlap (Å)
1:A:51:ILE:HG12	1:A:71:LYS:HG2	1.73	0.68
1:C:267:ASP:OD1	1:C:269:LYS:HG2	2.08	0.54
1:C:204:TYR:CE2	1:C:205:CYS:HB2	2.44	0.53
1:C:200:LEU:HD13	1:C:221:HIS:HB2	1.90	0.53
1:D:306:VAL:HG12	6:D:410:GOL:H11	1.92	0.50
1:D:204:TYR:CE2	1:D:205:CYS:HB2	2.48	0.49
1:D:306:VAL:HG12	6:D:410:GOL:C1	2.43	0.48
1:C:87:TYR:HB3	1:C:113:TYR:HB2	1.96	0.47
1:C:239:SER:N	7:C:408:CL:CL	2.84	0.45
1:C:62:VAL:CG1	1:C:66:ALA:HB2	2.47	0.45
1:A:43:ILE:O	1:A:43:ILE:HG13	2.17	0.45
1:C:186:ASN:HB3	1:C:189:ASN:O	2.18	0.43
1:D:133:ARG:HD3	1:D:133:ARG:C	2.39	0.43
1:A:87:TYR:HB3	1:A:113:TYR:HB2	2.00	0.42
1:A:166:GLU:HG3	1:A:317:TYR:CD2	2.54	0.42
1:C:200:LEU:HD13	1:C:221:HIS:CG	2.55	0.42
1:B:109:GLY:HA3	1:B:164:ILE:HD11	2.02	0.41
1:A:38:LYS:HE3	1:A:58:SER:O	2.22	0.40

There are no symmetry-related clashes.



## 5.3 Torsion angles

### 5.3.1 Protein backbone

In the following table, the Percentiles column shows the percent Ramachandran outliers of the chain as a percentile score with respect to all X-ray entries followed by that with respect to entries of similar resolution.

The Analysed column shows the number of residues for which the backbone conformation was analysed, and the total number of residues.

Mol	Chain	Analysed	Favoured	Allowed	Outliers	Percentiles	
1	A	316/364 (87%)	305 (96%)	11 (4%)	0	100	100
1	B	301/364 (83%)	285 (95%)	16 (5%)	0	100	100
1	C	318/364 (87%)	310 (98%)	8 (2%)	0	100	100
1	D	306/364 (84%)	295 (96%)	11 (4%)	0	100	100
All	All	1241/1456 (85%)	1195 (96%)	46 (4%)	0	100	100

There are no Ramachandran outliers to report.

### 5.3.2 Protein sidechains

In the following table, the Percentiles column shows the percent sidechain outliers of the chain as a percentile score with respect to all X-ray entries followed by that with respect to entries of similar resolution.

The Analysed column shows the number of residues for which the sidechain conformation was analysed, and the total number of residues.

Mol	Chain	Analysed	Rotameric	Outliers	Percentiles	
1	A	264/304 (87%)	261 (99%)	3 (1%)	73	82
1	B	250/304 (82%)	248 (99%)	2 (1%)	81	88
1	C	267/304 (88%)	265 (99%)	2 (1%)	84	90
1	D	255/304 (84%)	251 (98%)	4 (2%)	62	73
All	All	1036/1216 (85%)	1025 (99%)	11 (1%)	73	82

All (11) residues with a non-rotameric sidechain are listed below:

Mol	Chain	Res	Type
1	A	50	CYS
1	A	133	ARG

*Continued on next page...*



*Continued from previous page...*

Mol	Chain	Res	Type
1	A	222	ASP
1	B	57	ASN
1	B	133	ARG
1	C	50	CYS
1	C	133	ARG
1	D	50	CYS
1	D	57	ASN
1	D	133	ARG
1	D	340	ASP

Sometimes sidechains can be flipped to improve hydrogen bonding and reduce clashes. There are no such sidechains identified.

### 5.3.3 RNA [i](#)

There are no RNA molecules in this entry.

## 5.4 Non-standard residues in protein, DNA, RNA chains [i](#)

There are no non-standard protein/DNA/RNA residues in this entry.

## 5.5 Carbohydrates [i](#)

There are no monosaccharides in this entry.

## 5.6 Ligand geometry [i](#)

Of 37 ligands modelled in this entry, 2 are monoatomic - leaving 35 for Mogul analysis.

In the following table, the Counts columns list the number of bonds (or angles) for which Mogul statistics could be retrieved, the number of bonds (or angles) that are observed in the model and the number of bonds (or angles) that are defined in the Chemical Component Dictionary. The Link column lists molecule types, if any, to which the group is linked. The Z score for a bond length (or angle) is the number of standard deviations the observed value is removed from the expected value. A bond length (or angle) with  $|Z| > 2$  is considered an outlier worth inspection. RMSZ is the root-mean-square of all Z scores of the bond lengths (or angles).

Mol	Type	Chain	Res	Link	Bond lengths			Bond angles		
					Counts	RMSZ	$\# Z  > 2$	Counts	RMSZ	$\# Z  > 2$
6	GOL	B	406	-	5,5,5	0.26	0	5,5,5	0.24	0
4	PG4	A	405	-	12,12,12	0.60	0	11,11,11	0.35	0



Mol	Type	Chain	Res	Link	Bond lengths			Bond angles		
					Counts	RMSZ	# Z  > 2	Counts	RMSZ	# Z  > 2
5	FBY	B	401	-	29,29,29	0.59	0	37,42,42	1.08	3 (8%)
6	GOL	D	414	-	5,5,5	0.40	0	5,5,5	0.22	0
6	GOL	D	410	-	5,5,5	0.35	0	5,5,5	0.31	0
2	SO4	D	402	-	4,4,4	0.32	0	6,6,6	0.24	0
2	SO4	D	406	-	4,4,4	0.33	0	6,6,6	0.19	0
6	GOL	B	408	-	5,5,5	0.24	0	5,5,5	0.26	0
4	PG4	A	404	-	12,12,12	0.53	0	11,11,11	0.24	0
2	SO4	C	403	-	4,4,4	0.34	0	6,6,6	0.10	0
2	SO4	D	404	-	4,4,4	0.37	0	6,6,6	0.19	0
6	GOL	D	409	-	5,5,5	0.31	0	5,5,5	0.27	0
6	GOL	C	404	-	5,5,5	0.20	0	5,5,5	0.30	0
2	SO4	C	401	-	4,4,4	0.39	0	6,6,6	0.17	0
6	GOL	D	413	-	5,5,5	0.36	0	5,5,5	0.31	0
6	GOL	D	408	-	5,5,5	0.32	0	5,5,5	0.29	0
3	ACT	A	403	-	1,3,3	1.27	0	0,3,3	0.00	-
2	SO4	A	402	-	4,4,4	0.39	0	6,6,6	0.05	0
2	SO4	B	404	-	4,4,4	0.32	0	6,6,6	0.24	0
2	SO4	C	402	-	4,4,4	0.33	0	6,6,6	0.15	0
2	SO4	A	401	-	4,4,4	0.34	0	6,6,6	0.16	0
5	FBY	D	401	-	29,29,29	0.58	0	37,42,42	1.06	4 (10%)
2	SO4	D	405	-	4,4,4	0.34	0	6,6,6	0.20	0
6	GOL	B	407	-	5,5,5	0.39	0	5,5,5	0.56	0
2	SO4	B	402	-	4,4,4	0.39	0	6,6,6	0.15	0
6	GOL	C	407	-	5,5,5	0.39	0	5,5,5	0.25	0
6	GOL	C	405	-	5,5,5	0.31	0	5,5,5	0.37	0
6	GOL	B	405	-	5,5,5	0.25	0	5,5,5	0.23	0
3	ACT	D	415	-	1,3,3	1.51	0	0,3,3	0.00	-
2	SO4	D	403	-	4,4,4	0.34	0	6,6,6	0.17	0
6	GOL	D	411	-	5,5,5	0.43	0	5,5,5	0.29	0
2	SO4	B	403	-	4,4,4	0.32	0	6,6,6	0.14	0
6	GOL	C	406	-	5,5,5	0.38	0	5,5,5	0.23	0
2	SO4	D	407	-	4,4,4	0.33	0	6,6,6	0.09	0
6	GOL	D	412	-	5,5,5	0.45	0	5,5,5	0.49	0

In the following table, the Chirals column lists the number of chiral outliers, the number of chiral centers analysed, the number of these observed in the model and the number defined in the Chemical Component Dictionary. Similar counts are reported in the Torsion and Rings columns. '2' means no outliers of that kind were identified.

Mol	Type	Chain	Res	Link	Chirals	Torsions	Rings
6	GOL	B	406	-	-	0/4/4/4	-
6	GOL	D	411	-	-	3/4/4/4	-

*Continued on next page...*



*Continued from previous page...*

Mol	Type	Chain	Res	Link	Chirals	Torsions	Rings
6	GOL	D	409	-	-	2/4/4/4	-
6	GOL	C	404	-	-	2/4/4/4	-
5	FBY	D	401	-	-	2/8/28/28	0/3/3/3
6	GOL	D	414	-	-	2/4/4/4	-
5	FBY	B	401	-	-	3/8/28/28	0/3/3/3
6	GOL	B	407	-	-	2/4/4/4	-
6	GOL	D	410	-	-	2/4/4/4	-
6	GOL	D	413	-	-	2/4/4/4	-
6	GOL	D	412	-	-	4/4/4/4	-
4	PG4	A	405	-	-	4/10/10/10	-
6	GOL	C	406	-	-	3/4/4/4	-
6	GOL	D	408	-	-	0/4/4/4	-
6	GOL	B	408	-	-	0/4/4/4	-
4	PG4	A	404	-	-	4/10/10/10	-
6	GOL	C	405	-	-	0/4/4/4	-
6	GOL	C	407	-	-	4/4/4/4	-
6	GOL	B	405	-	-	0/4/4/4	-

There are no bond length outliers.

All (7) bond angle outliers are listed below:

Mol	Chain	Res	Type	Atoms	Z	Observed(°)	Ideal(°)
5	B	401	FBY	F2-C2-C3	2.51	119.00	117.13
5	B	401	FBY	C1-C2-C3	-2.48	121.85	123.79
5	D	401	FBY	C1-C2-C3	-2.39	121.92	123.79
5	D	401	FBY	C5-C4-C3	-2.36	121.94	123.79
5	B	401	FBY	C5-C4-C3	-2.21	122.06	123.79
5	D	401	FBY	F2-C2-C3	2.07	118.67	117.13
5	D	401	FBY	F1-C4-C3	2.03	118.64	117.13

There are no chirality outliers.

All (39) torsion outliers are listed below:

Mol	Chain	Res	Type	Atoms
6	D	409	GOL	C1-C2-C3-O3
6	D	414	GOL	O1-C1-C2-C3
6	D	410	GOL	C1-C2-C3-O3
6	D	413	GOL	C1-C2-C3-O3

*Continued on next page...*



*Continued from previous page...*

Mol	Chain	Res	Type	Atoms
6	B	407	GOL	C1-C2-C3-O3
6	C	407	GOL	C1-C2-C3-O3
6	D	411	GOL	O1-C1-C2-C3
6	C	406	GOL	O1-C1-C2-C3
6	D	412	GOL	O1-C1-C2-C3
6	D	412	GOL	C1-C2-C3-O3
5	B	401	FBY	N2-C7-N1-C6
5	B	401	FBY	N3-C7-N1-C6
6	D	411	GOL	O1-C1-C2-O2
4	A	405	PG4	O1-C1-C2-O2
6	D	411	GOL	C1-C2-C3-O3
6	D	409	GOL	O2-C2-C3-O3
6	D	414	GOL	O1-C1-C2-O2
6	D	410	GOL	O2-C2-C3-O3
6	B	407	GOL	O2-C2-C3-O3
6	C	406	GOL	O1-C1-C2-O2
6	D	412	GOL	O1-C1-C2-O2
6	D	412	GOL	O2-C2-C3-O3
6	D	413	GOL	O2-C2-C3-O3
6	C	407	GOL	O2-C2-C3-O3
4	A	404	PG4	C8-C7-O4-C6
6	C	407	GOL	O1-C1-C2-O2
5	D	401	FBY	N3-C7-N1-C6
4	A	404	PG4	O2-C3-C4-O3
4	A	405	PG4	C1-C2-O2-C3
4	A	405	PG4	C8-C7-O4-C6
5	D	401	FBY	N2-C7-N1-C6
4	A	405	PG4	O4-C7-C8-O5
4	A	404	PG4	C6-C5-O3-C4
5	B	401	FBY	N4-C13-C14-C15
6	C	404	GOL	O1-C1-C2-C3
6	C	407	GOL	O1-C1-C2-C3
6	C	406	GOL	C1-C2-C3-O3
6	C	404	GOL	O1-C1-C2-O2
4	A	404	PG4	C1-C2-O2-C3

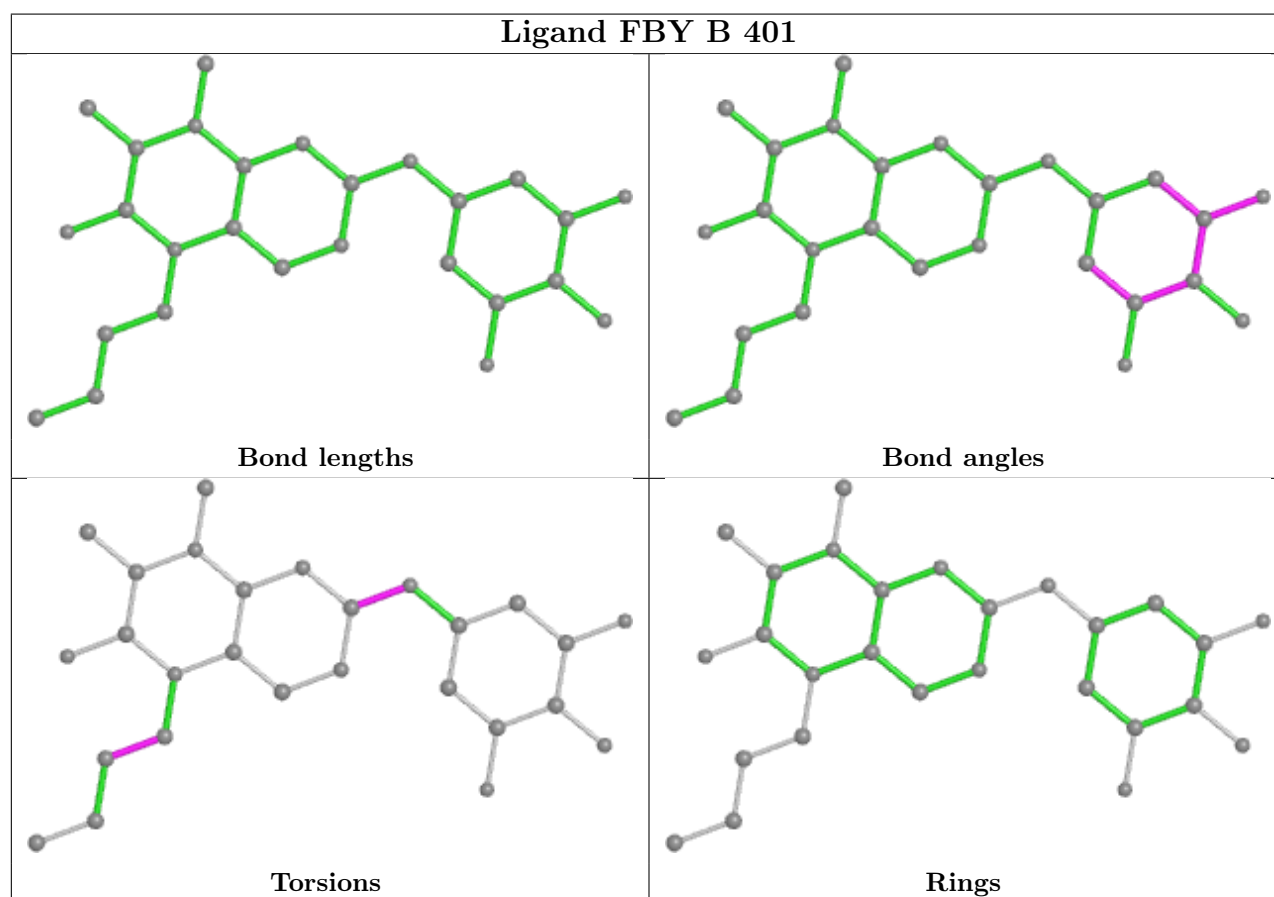
There are no ring outliers.

1 monomer is involved in 2 short contacts:

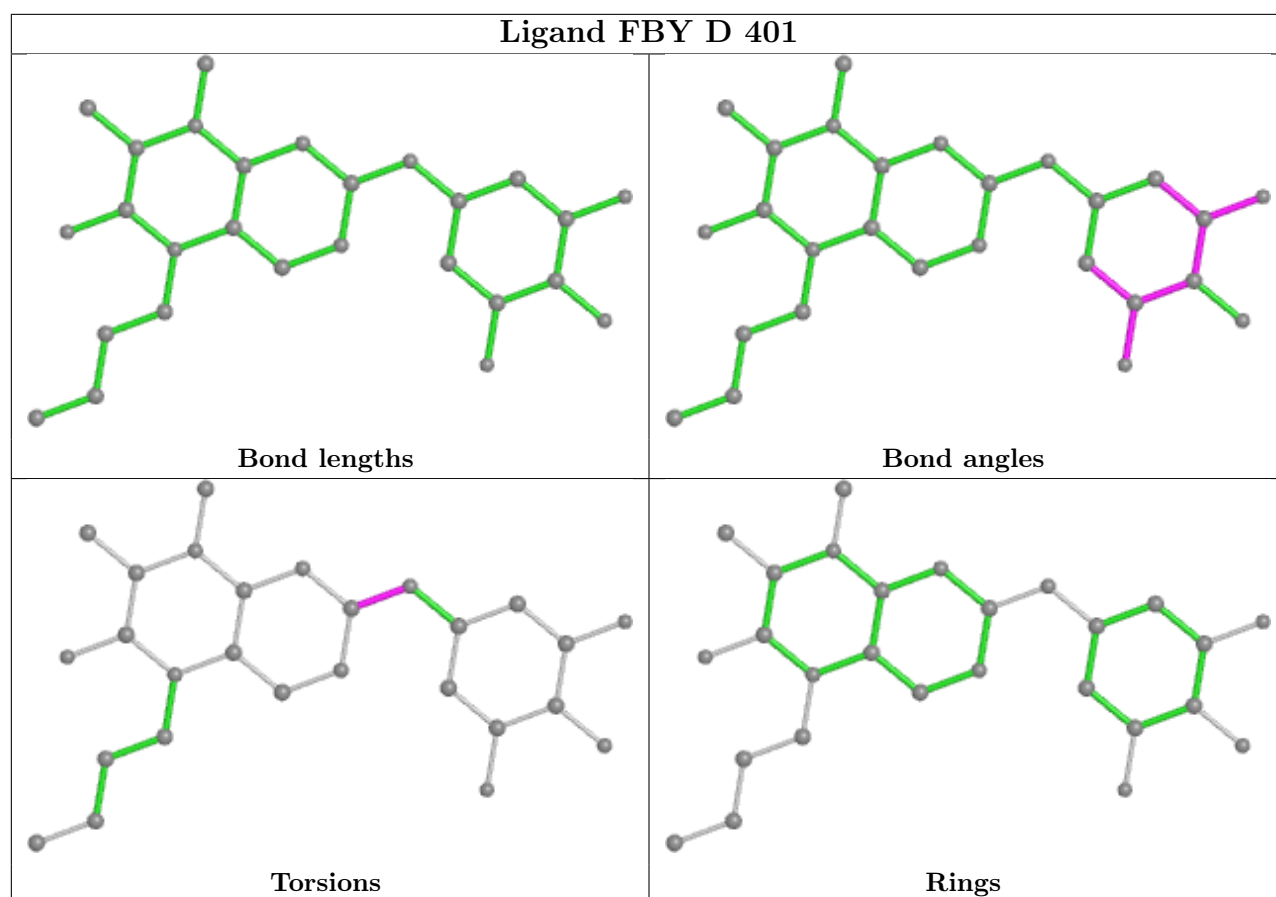
Mol	Chain	Res	Type	Clashes	Symm-Clashes
6	D	410	GOL	2	0



The following is a two-dimensional graphical depiction of Mogul quality analysis of bond lengths, bond angles, torsion angles, and ring geometry for all instances of the Ligand of Interest. In addition, ligands with molecular weight > 250 and outliers as shown on the validation Tables will also be included. For torsion angles, if less than 5% of the Mogul distribution of torsion angles is within 10 degrees of the torsion angle in question, then that torsion angle is considered an outlier. Any bond that is central to one or more torsion angles identified as an outlier by Mogul will be highlighted in the graph. For rings, the root-mean-square deviation (RMSD) between the ring in question and similar rings identified by Mogul is calculated over all ring torsion angles. If the average RMSD is greater than 60 degrees and the minimal RMSD between the ring in question and any Mogul-identified rings is also greater than 60 degrees, then that ring is considered an outlier. The outliers are highlighted in purple. The color gray indicates Mogul did not find sufficient equivalents in the CSD to analyse the geometry.







## 5.7 Other polymers [i](#)

There are no such residues in this entry.

## 5.8 Polymer linkage issues [i](#)

There are no chain breaks in this entry.



## 6 Fit of model and data

### 6.1 Protein, DNA and RNA chains

In the following table, the column labelled ‘#RSRZ > 2’ contains the number (and percentage) of RSRZ outliers, followed by percent RSRZ outliers for the chain as percentile scores relative to all X-ray entries and entries of similar resolution. The OWAB column contains the minimum, median, 95<sup>th</sup> percentile and maximum values of the occupancy-weighted average B-factor per residue. The column labelled ‘Q < 0.9’ lists the number of (and percentage) of residues with an average occupancy less than 0.9.

Mol	Chain	Analysed	<RSRZ>	#RSRZ>2	OWAB(Å <sup>2</sup> )	Q<0.9
1	A	316/364 (86%)	-0.04	14 (4%) 34 37	19, 31, 54, 76	0
1	B	308/364 (84%)	0.35	34 (11%) 5 5	18, 37, 95, 111	0
1	C	319/364 (87%)	0.07	18 (5%) 24 26	19, 31, 58, 82	0
1	D	312/364 (85%)	0.19	26 (8%) 11 12	17, 32, 81, 114	0
All	All	1255/1456 (86%)	0.14	92 (7%) 15 15	17, 32, 80, 114	0

All (92) RSRZ outliers are listed below:

Mol	Chain	Res	Type	RSRZ
1	D	48	PHE	7.4
1	C	220	CYS	7.0
1	D	24	ALA	6.2
1	D	61	SER	6.1
1	D	62	VAL	6.1
1	C	45	GLN	6.1
1	B	63	GLY	5.7
1	D	59	SER	5.7
1	B	126	TYR	5.3
1	B	44	GLY	5.1
1	A	220	CYS	4.9
1	D	23	PHE	4.9
1	B	41	LEU	4.8
1	D	126	TYR	4.7
1	D	60	GLU	4.6
1	D	120	ASP	4.5
1	B	25	VAL	4.2
1	B	62	VAL	4.1
1	B	125	SER	4.1
1	B	33	ALA	4.0
1	B	24	ALA	4.0

*Continued on next page...*



*Continued from previous page...*

Mol	Chain	Res	Type	RSRZ
1	D	26	GLY	4.0
1	A	217	PRO	3.9
1	B	36	ALA	3.9
1	B	120	ASP	3.8
1	B	187	TYR	3.8
1	A	20	ALA	3.8
1	D	63	GLY	3.7
1	C	59	SER	3.6
1	D	77	ASN	3.6
1	C	217	PRO	3.5
1	B	75	SER	3.4
1	A	59	SER	3.4
1	D	76	ASP	3.4
1	D	42	PRO	3.3
1	B	39	VAL	3.3
1	D	25	VAL	3.3
1	D	65	ASP	3.2
1	B	35	ALA	3.2
1	B	77	ASN	3.2
1	B	121	LYS	3.1
1	C	215	ALA	3.1
1	D	41	LEU	3.0
1	A	101	ARG	3.0
1	B	26	GLY	2.9
1	C	48	PHE	2.8
1	B	34	ALA	2.8
1	C	21	GLU	2.8
1	D	294	ASN	2.8
1	B	76	ASP	2.7
1	B	57	ASN	2.7
1	A	61	SER	2.7
1	C	58	SER	2.6
1	D	187	TYR	2.6
1	C	20	ALA	2.5
1	C	122	ASN	2.5
1	D	57	ASN	2.5
1	C	144	ALA	2.5
1	B	178	ILE	2.5
1	C	44	GLY	2.4
1	A	294	ASN	2.4
1	C	64	SER	2.4
1	C	263	ASP	2.4

*Continued on next page...*



*Continued from previous page...*

Mol	Chain	Res	Type	RSRZ
1	A	209	VAL	2.4
1	D	28	ILE	2.3
1	B	119	HIS	2.3
1	D	64	SER	2.3
1	A	146	ALA	2.3
1	C	332	GLY	2.3
1	D	56	MET	2.3
1	C	221	HIS	2.3
1	B	74	PRO	2.3
1	B	28	ILE	2.3
1	B	32	MET	2.2
1	B	195	LEU	2.2
1	D	52	TYR	2.2
1	B	29	ILE	2.2
1	C	178	ILE	2.2
1	A	325	LEU	2.2
1	A	263[A]	ASP	2.2
1	C	123	GLY	2.2
1	B	23	PHE	2.1
1	A	293	ALA	2.1
1	B	52	TYR	2.1
1	B	66	ALA	2.1
1	B	263	ASP	2.1
1	D	121	LYS	2.1
1	D	119	HIS	2.0
1	A	60	GLU	2.0
1	B	43	ILE	2.0
1	A	144	ALA	2.0
1	B	49	GLY	2.0

## 6.2 Non-standard residues in protein, DNA, RNA chains [i](#)

There are no non-standard protein/DNA/RNA residues in this entry.

## 6.3 Carbohydrates [i](#)

There are no monosaccharides in this entry.



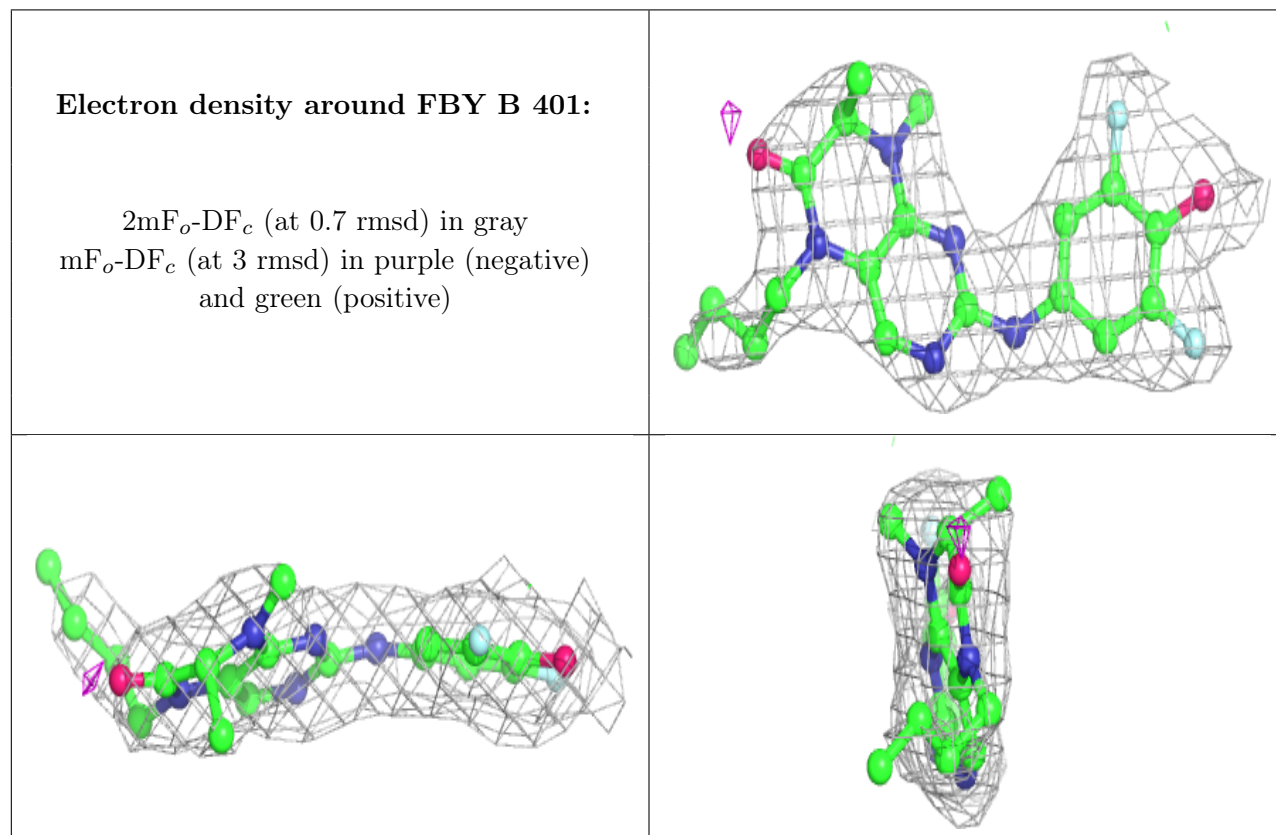
## 6.4 Ligands

In the following table, the Atoms column lists the number of modelled atoms in the group and the number defined in the chemical component dictionary. The B-factors column lists the minimum, median, 95<sup>th</sup> percentile and maximum values of B factors of atoms in the group. The column labelled 'Q< 0.9' lists the number of atoms with occupancy less than 0.9.

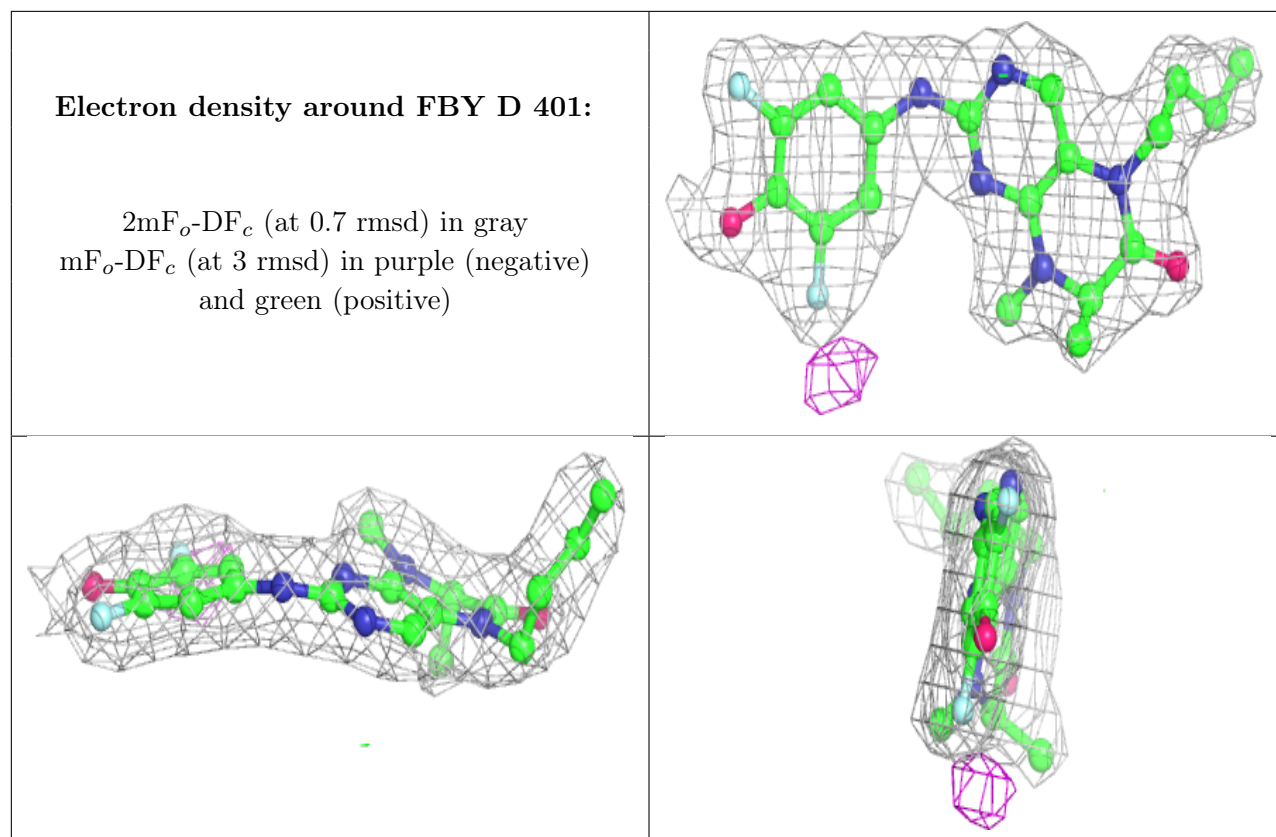
Mol	Type	Chain	Res	Atoms	RSCC	RSR	B-factors(Å <sup>2</sup> )	Q<0.9
4	PG4	A	404	13/13	0.54	0.26	62,63,64,65	0
4	PG4	A	405	13/13	0.61	0.37	51,60,62,63	0
6	GOL	C	406	6/6	0.68	0.27	61,63,64,66	0
6	GOL	D	412	6/6	0.69	0.30	51,56,57,57	0
2	SO4	A	402	5/5	0.73	0.29	91,92,94,97	0
6	GOL	D	409	6/6	0.76	0.22	54,57,57,59	0
6	GOL	B	407	6/6	0.79	0.20	45,50,50,51	0
6	GOL	D	411	6/6	0.79	0.23	55,58,59,60	0
6	GOL	C	405	6/6	0.81	0.21	58,59,62,64	0
2	SO4	C	402	5/5	0.81	0.31	71,74,78,79	0
2	SO4	D	406	5/5	0.81	0.23	82,87,89,90	0
6	GOL	D	410	6/6	0.81	0.23	49,51,52,53	0
6	GOL	D	414	6/6	0.83	0.17	48,52,53,53	0
6	GOL	C	407	6/6	0.83	0.20	55,59,60,60	0
6	GOL	D	413	6/6	0.84	0.22	51,53,54,54	0
6	GOL	B	408	6/6	0.84	0.21	66,68,70,74	0
2	SO4	D	407	5/5	0.85	0.23	97,98,100,100	0
6	GOL	C	404	6/6	0.86	0.28	58,58,58,59	0
3	ACT	D	415	4/4	0.87	0.17	63,64,64,65	0
6	GOL	B	406	6/6	0.88	0.20	51,52,54,55	0
6	GOL	D	408	6/6	0.89	0.14	32,33,34,35	0
2	SO4	C	403	5/5	0.89	0.24	89,89,90,93	0
2	SO4	D	405	5/5	0.89	0.35	75,76,78,79	0
5	FBY	B	401	27/27	0.89	0.16	44,54,62,64	0
2	SO4	B	402	5/5	0.89	0.26	73,73,77,78	0
2	SO4	C	401	5/5	0.89	0.28	61,66,67,70	0
2	SO4	D	404	5/5	0.91	0.19	61,64,66,67	0
6	GOL	B	405	6/6	0.92	0.13	31,34,34,35	0
2	SO4	B	404	5/5	0.92	0.24	63,65,68,68	0
2	SO4	A	401	5/5	0.93	0.25	68,69,73,74	0
7	CL	D	416	1/1	0.93	0.23	68,68,68,68	0
2	SO4	B	403	5/5	0.93	0.26	80,80,81,82	0
3	ACT	A	403	4/4	0.95	0.15	48,50,50,50	0
2	SO4	D	403	5/5	0.96	0.12	49,51,52,54	0
5	FBY	D	401	27/27	0.96	0.10	27,35,43,46	0
2	SO4	D	402	5/5	0.97	0.14	50,51,53,55	0
7	CL	C	408	1/1	0.97	0.11	46,46,46,46	0



The following is a graphical depiction of the model fit to experimental electron density of all instances of the Ligand of Interest. In addition, ligands with molecular weight > 250 and outliers as shown on the geometry validation Tables will also be included. Each fit is shown from different orientation to approximate a three-dimensional view.







## 6.5 Other polymers [i](#)

There are no such residues in this entry.