



Full wwPDB X-ray Structure Validation Report ⓘ

May 27, 2020 – 12:20 am BST

PDB ID : 5CUH
Title : Crystal structure MMP-9 complexes with a constrained hydroxamate based inhibitor LT4
Authors : Tepshi, L.; Vera, L.; Nuti, E.; Rosalia, L.; Rossello, A.; Stura, E.A.
Deposited on : 2015-07-24
Resolution : 1.83 Å(reported)

This is a Full wwPDB X-ray Structure Validation Report for a publicly released PDB entry.

We welcome your comments at validation@mail.wwpdb.org

A user guide is available at

<https://www.wwpdb.org/validation/2017/XrayValidationReportHelp>

with specific help available everywhere you see the ⓘ symbol.

The following versions of software and data (see [references ⓘ](#)) were used in the production of this report:

MolProbity : 4.02b-467
Mogul : 1.8.5 (274361), CSD as541be (2020)
Xtriage (Phenix) : 1.13
EDS : 2.11
buster-report : 1.1.7 (2018)
Percentile statistics : 20191225.v01 (using entries in the PDB archive December 25th 2019)
Refmac : 5.8.0158
CCP4 : 7.0.044 (Gargrove)
Ideal geometry (proteins) : Engh & Huber (2001)
Ideal geometry (DNA, RNA) : Parkinson et al. (1996)
Validation Pipeline (wwPDB-VP) : 2.11

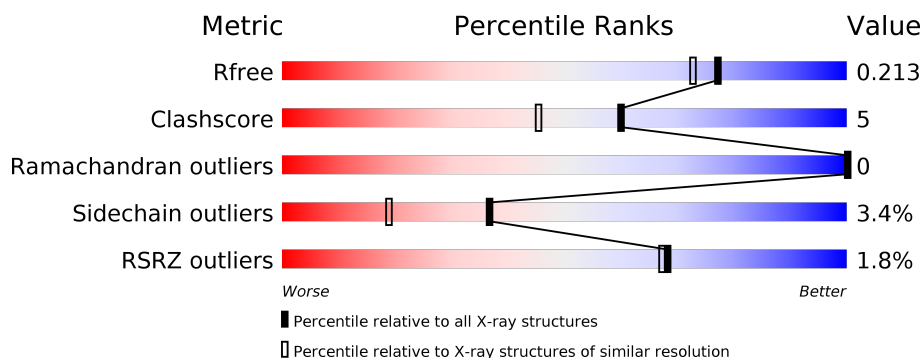
1 Overall quality at a glance

The following experimental techniques were used to determine the structure:

X-RAY DIFFRACTION

The reported resolution of this entry is 1.83 Å.

Percentile scores (ranging between 0-100) for global validation metrics of the entry are shown in the following graphic. The table shows the number of entries on which the scores are based.



Metric	Whole archive (#Entries)	Similar resolution (#Entries, resolution range(Å))
R_{free}	130704	4003 (1.86-1.82)
Clashscore	141614	4233 (1.86-1.82)
Ramachandran outliers	138981	4185 (1.86-1.82)
Sidechain outliers	138945	4186 (1.86-1.82)
RSRZ outliers	127900	3957 (1.86-1.82)

The table below summarises the geometric issues observed across the polymeric chains and their fit to the electron density. The red, orange, yellow and green segments on the lower bar indicate the fraction of residues that contain outliers for ≥ 3 , 2, 1 and 0 types of geometric quality criteria respectively. A grey segment represents the fraction of residues that are not modelled. The numeric value for each fraction is indicated below the corresponding segment, with a dot representing fractions $\leq 5\%$. The upper red bar (where present) indicates the fraction of residues that have poor fit to the electron density. The numeric value is given above the bar.

Mol	Chain	Length	Quality of chain
1	A	164	<div> <div>3%</div> <div> <div></div> <div>89%</div> <div>10%</div> </div> <div></div> </div>
1	B	164	<div> <div>%</div> <div> <div></div> <div>90%</div> <div>9%</div> </div> <div></div> </div>

2 Entry composition

There are 8 unique types of molecules in this entry. The entry contains 3203 atoms, of which 0 are hydrogens and 0 are deuteriums.

In the tables below, the ZeroOcc column contains the number of atoms modelled with zero occupancy, the AltConf column contains the number of residues with at least one atom in alternate conformation and the Trace column contains the number of residues modelled with at most 2 atoms.

- Molecule 1 is a protein called Matrix metalloproteinase-9, Matrix metalloproteinase-9.

Mol	Chain	Residues	Atoms					ZeroOcc	AltConf	Trace
1	A	164	Total	C	N	O	S	0	4	0
			1336	863	224	247	2			
1	B	164	Total	C	N	O	S	0	11	0
			1402	901	242	257	2			

There are 2 discrepancies between the modelled and reference sequences:

Chain	Residue	Modelled	Actual	Comment	Reference
A	106	GLY	-	expression tag	UNP P14780
B	106	GLY	-	expression tag	UNP P14780

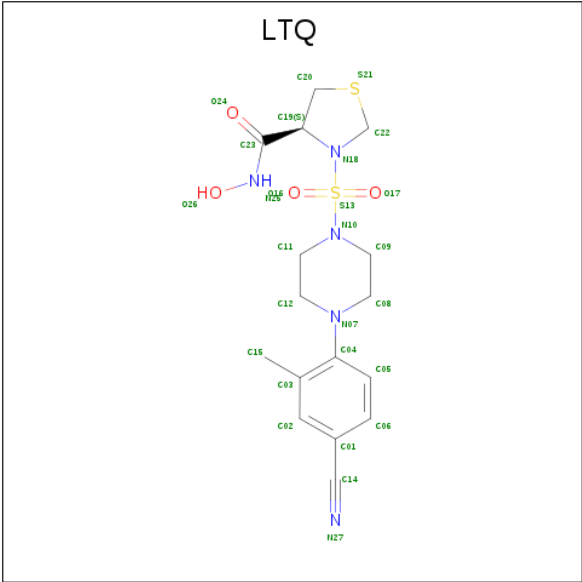
- Molecule 2 is ZINC ION (three-letter code: ZN) (formula: Zn).

Mol	Chain	Residues	Atoms		ZeroOcc	AltConf
2	B	2	Total	Zn	0	0
			2	2		
2	A	2	Total	Zn	0	0
			2	2		

- Molecule 3 is CALCIUM ION (three-letter code: CA) (formula: Ca).

Mol	Chain	Residues	Atoms		ZeroOcc	AltConf
3	B	3	Total	Ca	0	0
			3	3		
3	A	3	Total	Ca	0	0
			3	3		

- Molecule 4 is (4S)-3-{[4-(4-cyano-2-methylphenyl)piperazin-1-yl]sulfonyl}-N-hydroxy-1,3-thiazolidine-4-carboxamide (three-letter code: LTQ) (formula: C₁₆H₂₁N₅O₄S₂).



Mol	Chain	Residues	Atoms					ZeroOcc	AltConf
4	A	1	Total	C	N	O	S	0	0
			27	16	5	4	2		
4	B	1	Total	C	N	O	S	0	0
			27	16	5	4	2		

- Molecule 5 is 1,2-ETHANEDIOL (three-letter code: EDO) (formula: C₂H₆O₂).



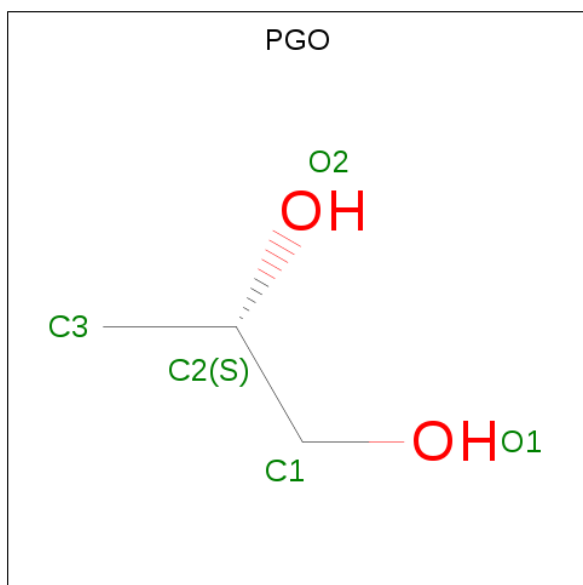
Mol	Chain	Residues	Atoms			ZeroOcc	AltConf
5	A	1	Total	C	O	0	0
			4	2	2		
5	A	1	Total	C	O	0	0
			4	2	2		

Continued on next page...

Continued from previous page...

Mol	Chain	Residues	Atoms			ZeroOcc	AltConf
5	B	1	Total	C	O	0	0
			4	2	2		
5	B	1	Total	C	O	0	0
			4	2	2		

- Molecule 6 is S-1,2-PROPANEDIOL (three-letter code: PGO) (formula: $C_3H_8O_2$).



Mol	Chain	Residues	Atoms			ZeroOcc	AltConf
6	A	1	Total	C	O	0	0
			5	3	2		
6	B	1	Total	C	O	0	0
			5	3	2		

- Molecule 7 is DIMETHYL SULFOXIDE (three-letter code: DMS) (formula: C_2H_6OS).



Mol	Chain	Residues	Atoms				ZeroOcc	AltConf
7	B	1	Total	C	O	S	0	0
			4	2	1	1		


- Molecule 8 is water.

Mol	Chain	Residues	Atoms		ZeroOcc	AltConf
8	A	165	Total	O	0	4
			167	167		
8	B	201	Total	O	0	3
			204	204		

3 Residue-property plots [i](#)


These plots are drawn for all protein, RNA and DNA chains in the entry. The first graphic for a chain summarises the proportions of the various outlier classes displayed in the second graphic. The second graphic shows the sequence view annotated by issues in geometry and electron density. Residues are color-coded according to the number of geometric quality criteria for which they contain at least one outlier: green = 0, yellow = 1, orange = 2 and red = 3 or more. A red dot above a residue indicates a poor fit to the electron density ($RSRZ > 2$). Stretches of 2 or more consecutive residues without any outlier are shown as a green connector. Residues present in the sample, but not in the model, are shown in grey.

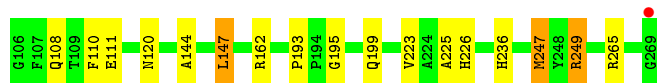
- Molecule 1: Matrix metalloproteinase-9,Matrix metalloproteinase-9

Chain A: 



- Molecule 1: Matrix metalloproteinase-9,Matrix metalloproteinase-9

Chain B: 



4 Data and refinement statistics

Property	Value	Source
Space group	P 2 ₁ 2 ₁ 2	Depositor
Cell constants a, b, c, α , β , γ	74.68Å 97.79Å 43.49Å 90.00° 90.00° 90.00°	Depositor
Resolution (Å)	40.91 – 1.83 40.91 – 1.83	Depositor EDS
% Data completeness (in resolution range)	99.8 (40.91-1.83) 99.8 (40.91-1.83)	Depositor EDS
R_{merge}	0.21	Depositor
R_{sym}	0.19	Depositor
$\langle I/\sigma(I) \rangle$ ¹	2.06 (at 1.83Å)	Xtriage
Refinement program	REFMAC 5.8.0123	Depositor
R, R_{free}	0.173 , 0.214 0.172 , 0.213	Depositor DCC
R_{free} test set	1430 reflections (5.00%)	wwPDB-VP
Wilson B-factor (Å ²)	15.9	Xtriage
Anisotropy	0.058	Xtriage
Bulk solvent k_{sol} (e/Å ³), B_{sol} (Å ²)	0.36 , 52.1	EDS
L-test for twinning ²	$\langle L \rangle = 0.48$, $\langle L^2 \rangle = 0.31$	Xtriage
Estimated twinning fraction	No twinning to report.	Xtriage
F_o, F_c correlation	0.96	EDS
Total number of atoms	3203	wwPDB-VP
Average B, all atoms (Å ²)	18.0	wwPDB-VP

Xtriage's analysis on translational NCS is as follows: *The analyses of the Patterson function reveals a significant off-origin peak that is 45.36 % of the origin peak, indicating pseudo-translational symmetry. The chance of finding a peak of this or larger height randomly in a structure without pseudo-translational symmetry is equal to 1.3369e-04. The detected translational NCS is most likely also responsible for the elevated intensity ratio.*

¹Intensities estimated from amplitudes.

²Theoretical values of $\langle |L| \rangle$, $\langle L^2 \rangle$ for acentric reflections are 0.5, 0.333 respectively for untwinned datasets, and 0.375, 0.2 for perfectly twinned datasets.

5 Model quality ⓘ

5.1 Standard geometry ⓘ

Bond lengths and bond angles in the following residue types are not validated in this section: ZN, PGO, CA, LTQ, EDO, DMS

The Z score for a bond length (or angle) is the number of standard deviations the observed value is removed from the expected value. A bond length (or angle) with $|Z| > 5$ is considered an outlier worth inspection. RMSZ is the root-mean-square of all Z scores of the bond lengths (or angles).

Mol	Chain	Bond lengths		Bond angles	
		RMSZ	$\# Z > 5$	RMSZ	$\# Z > 5$
1	A	1.00	1/1384 (0.1%)	0.96	5/1885 (0.3%)
1	B	0.95	0/1450	0.92	1/1970 (0.1%)
All	All	0.98	1/2834 (0.0%)	0.94	6/3855 (0.2%)

All (1) bond length outliers are listed below:

Mol	Chain	Res	Type	Atoms	Z	Observed(Å)	Ideal(Å)
1	A	124	TRP	CB-CG	5.60	1.60	1.50

All (6) bond angle outliers are listed below:

Mol	Chain	Res	Type	Atoms	Z	Observed(°)	Ideal(°)
1	A	206	ASP	CB-CG-OD1	7.08	124.67	118.30
1	A	182	ASP	CB-CG-OD1	6.81	124.43	118.30
1	A	147	LEU	CB-CG-CD2	-6.09	100.65	111.00
1	A	182	ASP	CB-CG-OD2	-6.03	112.87	118.30
1	B	249	ARG	NE-CZ-NH2	-5.88	117.36	120.30
1	A	162	ARG	NE-CZ-NH2	5.09	122.85	120.30

There are no chirality outliers.

There are no planarity outliers.

5.2 Too-close contacts ⓘ

In the following table, the Non-H and H(model) columns list the number of non-hydrogen atoms and hydrogen atoms in the chain respectively. The H(added) column lists the number of hydrogen atoms added and optimized by MolProbity. The Clashes column lists the number of clashes within the asymmetric unit, whereas Symm-Clashes lists symmetry related clashes.

Mol	Chain	Non-H	H(model)	H(added)	Clashes	Symm-Clashes
1	A	1336	0	1225	8	0
1	B	1402	0	1292	15	0
2	A	2	0	0	0	0
2	B	2	0	0	0	0
3	A	3	0	0	0	0
3	B	3	0	0	0	0
4	A	27	0	21	4	0
4	B	27	0	20	2	0
5	A	8	0	12	0	0
5	B	8	0	12	0	0
6	A	5	0	8	0	0
6	B	5	0	8	0	0
7	B	4	0	6	0	0
8	A	167	0	0	4	2
8	B	204	0	0	4	2
All	All	3203	0	2604	25	2

The all-atom clashscore is defined as the number of clashes found per 1000 atoms (including hydrogen atoms). The all-atom clashscore for this structure is 5.

All (25) close contacts within the same asymmetric unit are listed below, sorted by their clash magnitude.

Atom-1	Atom-2	Interatomic distance (Å)	Clash overlap (Å)
8:A:406:HOH:O	1:B:111:GLU:HG2	1.82	0.77
1:B:147[A]:LEU:HD21	1:B:225:ALA:HB1	1.71	0.72
4:A:306:LTQ:H14	4:A:306:LTQ:H20	1.74	0.70
1:B:162[B]:ARG:NH1	8:B:401:HOH:O	2.27	0.66
1:A:169[B]:GLN:NE2	8:A:401:HOH:O	2.32	0.62
1:B:147[A]:LEU:HD12	1:B:147[A]:LEU:C	2.24	0.58
1:A:119:HIS:CE1	8:A:403:HOH:O	2.57	0.57
1:B:120[B]:ASN:ND2	8:B:402:HOH:O	2.38	0.55
1:B:108[B]:GLN:HG3	1:B:236:HIS:O	2.09	0.52
4:A:306:LTQ:C15	4:A:306:LTQ:H14	2.38	0.51
1:B:162[A]:ARG:NH2	8:B:403:HOH:O	2.43	0.51
1:B:147[A]:LEU:HD21	1:B:225:ALA:CB	2.41	0.49
1:A:126:GLN:OE1	1:A:169[B]:GLN:NE2	2.45	0.49
1:B:144:ALA:O	1:B:147[A]:LEU:HG	2.14	0.48
1:A:226:HIS:CE1	4:A:306:LTQ:H19	2.48	0.47
1:A:174[B]:GLU:HG3	8:A:423:HOH:O	2.15	0.46
1:B:226:HIS:CE1	4:B:306:LTQ:H19	2.50	0.45
1:B:265[A]:ARG:NE	8:B:404:HOH:O	2.49	0.45
1:B:223:VAL:HG22	4:B:306:LTQ:H16	1.99	0.44

Continued on next page...

Continued from previous page...

Atom-1	Atom-2	Interatomic distance (Å)	Clash overlap (Å)
1:B:247:MET:HB3	1:B:247:MET:HE3	1.87	0.44
1:B:110:PHE:CD2	1:B:193:PRO:HB3	2.52	0.43
1:B:195:GLY:C	1:B:199[A]:GLN:HB2	2.40	0.42
1:A:226:HIS:ND1	4:A:306:LTQ:H19	2.35	0.41
1:A:240:PRO:O	1:A:241:GLU:HB2	2.21	0.41
1:A:211:SER:OG	1:A:216:VAL:O	2.36	0.41

All (2) symmetry-related close contacts are listed below. The label for Atom-2 includes the symmetry operator and encoded unit-cell translations to be applied.

Atom-1	Atom-2	Interatomic distance (Å)	Clash overlap (Å)
8:A:532:HOH:O	8:B:449:HOH:O[1_455]	2.13	0.07
8:A:493:HOH:O	8:B:509:HOH:O[4_456]	2.19	0.01

5.3 Torsion angles [i](#)

5.3.1 Protein backbone [i](#)

In the following table, the Percentiles column shows the percent Ramachandran outliers of the chain as a percentile score with respect to all X-ray entries followed by that with respect to entries of similar resolution.

The Analysed column shows the number of residues for which the backbone conformation was analysed, and the total number of residues.

Mol	Chain	Analysed	Favoured	Allowed	Outliers	Percentiles	
1	A	166/164 (101%)	159 (96%)	7 (4%)	0	100	100
1	B	173/164 (106%)	168 (97%)	5 (3%)	0	100	100
All	All	339/328 (103%)	327 (96%)	12 (4%)	0	100	100

There are no Ramachandran outliers to report.

5.3.2 Protein sidechains [i](#)

In the following table, the Percentiles column shows the percent sidechain outliers of the chain as a percentile score with respect to all X-ray entries followed by that with respect to entries of similar resolution.

The Analysed column shows the number of residues for which the sidechain conformation was

analysed, and the total number of residues.

Mol	Chain	Analysed	Rotameric	Outliers	Percentiles	
1	A	135/131 (103%)	128 (95%)	7 (5%)	23	8
1	B	142/131 (108%)	138 (97%)	4 (3%)	43	26
All	All	277/262 (106%)	266 (96%)	11 (4%)	37	14

All (11) residues with a non-rotameric sidechain are listed below:

Mol	Chain	Res	Type
1	A	169[A]	GLN
1	A	169[B]	GLN
1	A	198	ILE
1	A	212	LEU
1	A	216	VAL
1	A	239	VAL
1	A	252	GLU
1	B	147[A]	LEU
1	B	147[B]	LEU
1	B	247	MET
1	B	249	ARG

Some sidechains can be flipped to improve hydrogen bonding and reduce clashes. There are no such sidechains identified.

5.3.3 RNA [i](#)

There are no RNA molecules in this entry.

5.4 Non-standard residues in protein, DNA, RNA chains [i](#)

There are no non-standard protein/DNA/RNA residues in this entry.

5.5 Carbohydrates [i](#)

There are no carbohydrates in this entry.

5.6 Ligand geometry [i](#)

Of 19 ligands modelled in this entry, 10 are monoatomic - leaving 9 for Mogul analysis.

In the following table, the Counts columns list the number of bonds (or angles) for which Mogul statistics could be retrieved, the number of bonds (or angles) that are observed in the model and the number of bonds (or angles) that are defined in the Chemical Component Dictionary. The Link column lists molecule types, if any, to which the group is linked. The Z score for a bond length (or angle) is the number of standard deviations the observed value is removed from the expected value. A bond length (or angle) with $|Z| > 2$ is considered an outlier worth inspection. RMSZ is the root-mean-square of all Z scores of the bond lengths (or angles).

Mol	Type	Chain	Res	Link	Bond lengths			Bond angles		
					Counts	RMSZ	# Z > 2	Counts	RMSZ	# Z > 2
7	DMS	B	309	-	3,3,3	0.62	0	3,3,3	0.22	0
5	EDO	A	307	-	3,3,3	0.42	0	2,2,2	0.67	0
5	EDO	A	308	-	3,3,3	0.42	0	2,2,2	0.57	0
6	PGO	A	309	-	3,4,4	0.32	0	1,4,4	0.15	0
4	LTQ	A	306	2	28,29,29	1.66	3 (10%)	34,42,42	3.09	15 (44%)
5	EDO	B	307	-	3,3,3	0.51	0	2,2,2	0.30	0
5	EDO	B	308	-	3,3,3	0.45	0	2,2,2	0.38	0
4	LTQ	B	306	2	28,29,29	2.03	5 (17%)	34,42,42	3.19	14 (41%)
6	PGO	B	310	-	3,4,4	0.28	0	1,4,4	0.94	0

In the following table, the Chirals column lists the number of chiral outliers, the number of chiral centers analysed, the number of these observed in the model and the number defined in the Chemical Component Dictionary. Similar counts are reported in the Torsion and Rings columns. '-' means no outliers of that kind were identified.

Mol	Type	Chain	Res	Link	Chirals	Torsions	Rings
5	EDO	A	307	-	-	0/1/1/1	-
5	EDO	A	308	-	-	0/1/1/1	-
6	PGO	A	309	-	-	2/2/2/2	-
4	LTQ	A	306	2	-	2/20/44/44	0/3/3/3
5	EDO	B	307	-	-	0/1/1/1	-
5	EDO	B	308	-	-	1/1/1/1	-
4	LTQ	B	306	2	-	2/20/44/44	0/3/3/3
6	PGO	B	310	-	-	1/2/2/2	-

All (8) bond length outliers are listed below:

Mol	Chain	Res	Type	Atoms	Z	Observed(Å)	Ideal(Å)
4	B	306	LTQ	C01-C14	-7.53	1.27	1.44
4	A	306	LTQ	C01-C14	-7.26	1.28	1.44
4	B	306	LTQ	C22-S21	-3.35	1.75	1.82
4	B	306	LTQ	S13-N10	-3.24	1.54	1.60
4	B	306	LTQ	C09-N10	-2.99	1.44	1.47

Continued on next page...

Continued from previous page...

Mol	Chain	Res	Type	Atoms	Z	Observed(Å)	Ideal(Å)
4	B	306	LTQ	C05-C04	2.34	1.43	1.39
4	A	306	LTQ	C22-S21	-2.22	1.77	1.82
4	A	306	LTQ	O16-S13	2.16	1.46	1.42

All (29) bond angle outliers are listed below:

Mol	Chain	Res	Type	Atoms	Z	Observed(°)	Ideal(°)
4	A	306	LTQ	C03-C04-N07	8.80	126.59	118.78
4	B	306	LTQ	C09-N10-C11	8.53	121.61	112.17
4	B	306	LTQ	C03-C04-N07	8.04	125.92	118.78
4	A	306	LTQ	C09-N10-C11	6.19	119.02	112.17
4	A	306	LTQ	C08-C09-N10	6.04	113.53	108.91
4	B	306	LTQ	C08-N07-C12	4.90	122.34	111.52
4	B	306	LTQ	C05-C04-N07	-4.90	114.49	122.30
4	A	306	LTQ	C05-C04-N07	-4.31	115.43	122.30
4	A	306	LTQ	C02-C03-C04	4.28	121.84	117.12
4	B	306	LTQ	O17-S13-N18	-4.20	101.14	108.86
4	B	306	LTQ	C20-S21-C22	4.18	101.89	91.50
4	A	306	LTQ	C09-C08-N07	4.02	118.51	110.70
4	B	306	LTQ	C15-C03-C02	-4.01	112.08	119.49
4	A	306	LTQ	O24-C23-N25	-3.94	118.17	123.27
4	A	306	LTQ	C08-N07-C12	3.92	120.16	111.52
4	B	306	LTQ	C02-C03-C04	3.85	121.38	117.12
4	B	306	LTQ	C02-C01-C14	-3.54	114.83	119.54
4	B	306	LTQ	O17-S13-O16	-3.50	114.44	121.72
4	B	306	LTQ	C20-C19-N18	3.48	111.88	106.17
4	A	306	LTQ	C15-C03-C02	-3.35	113.30	119.49
4	A	306	LTQ	O17-S13-O16	-3.24	115.00	121.72
4	A	306	LTQ	O16-S13-N18	3.22	114.78	108.86
4	A	306	LTQ	C12-N07-C04	3.20	123.86	116.27
4	A	306	LTQ	O17-S13-N18	-3.19	102.99	108.86
4	B	306	LTQ	C15-C03-C04	3.01	126.53	122.24
4	A	306	LTQ	C12-C11-N10	2.68	110.97	108.91
4	B	306	LTQ	C12-C11-N10	2.43	110.77	108.91
4	A	306	LTQ	C05-C04-C03	-2.20	117.75	121.15
4	B	306	LTQ	C08-C09-N10	2.11	110.53	108.91

There are no chirality outliers.

All (8) torsion outliers are listed below:

Mol	Chain	Res	Type	Atoms
6	A	309	PGO	O1-C1-C2-C3

Continued on next page...

Continued from previous page...

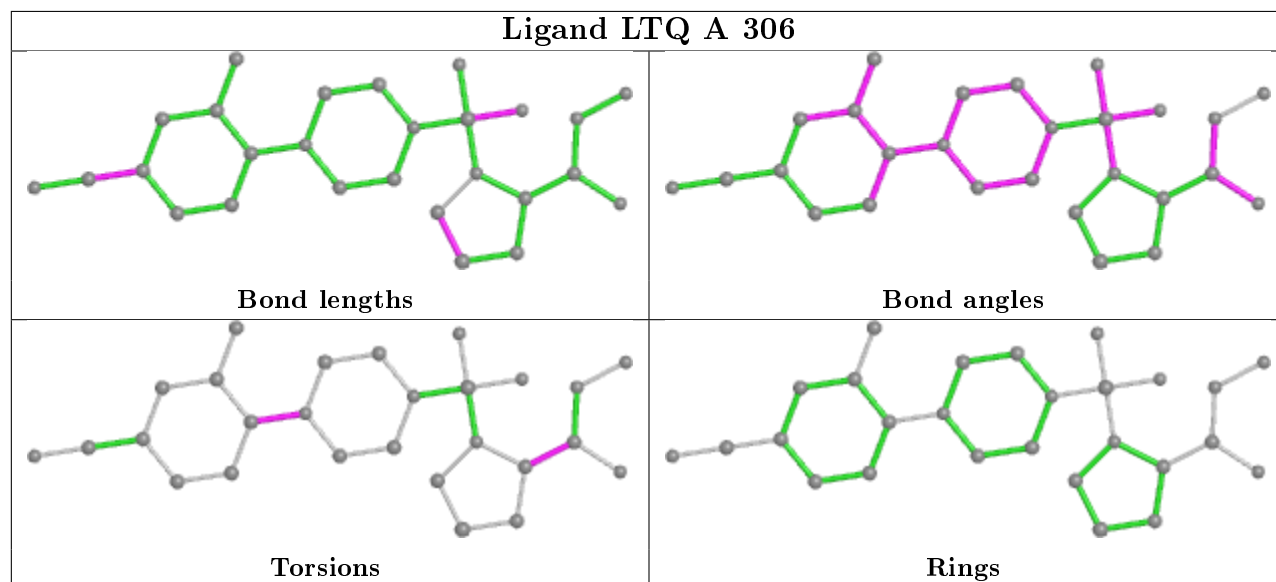
Mol	Chain	Res	Type	Atoms
6	A	309	PGO	O1-C1-C2-O2
6	B	310	PGO	O1-C1-C2-O2
4	B	306	LTQ	C03-C04-N07-C08
5	B	308	EDO	O1-C1-C2-O2
4	A	306	LTQ	C05-C04-N07-C12
4	B	306	LTQ	N18-C19-C23-N25
4	A	306	LTQ	N18-C19-C23-N25

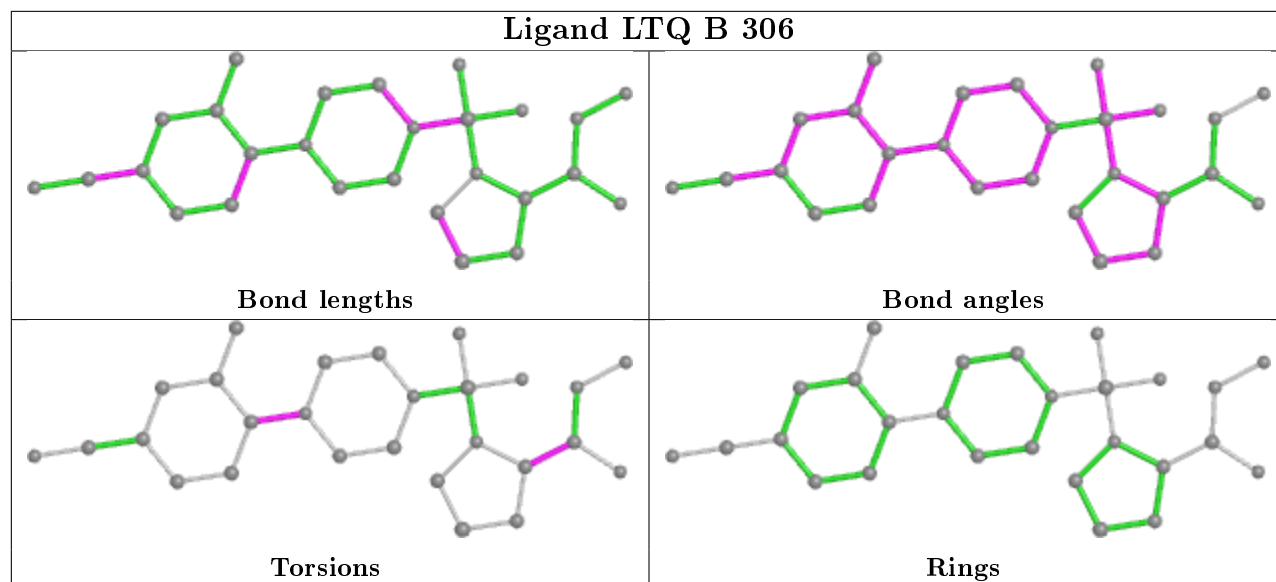
There are no ring outliers.

2 monomers are involved in 6 short contacts:

Mol	Chain	Res	Type	Clashes	Symm-Clashes
4	A	306	LTQ	4	0
4	B	306	LTQ	2	0

The following is a two-dimensional graphical depiction of Mogul quality analysis of bond lengths, bond angles, torsion angles, and ring geometry for all instances of the Ligand of Interest. In addition, ligands with molecular weight > 250 and outliers as shown on the validation Tables will also be included. For torsion angles, if less than 5% of the Mogul distribution of torsion angles is within 10 degrees of the torsion angle in question, then that torsion angle is considered an outlier. Any bond that is central to one or more torsion angles identified as an outlier by Mogul will be highlighted in the graph. For rings, the root-mean-square deviation (RMSD) between the ring in question and similar rings identified by Mogul is calculated over all ring torsion angles. If the average RMSD is greater than 60 degrees and the minimal RMSD between the ring in question and any Mogul-identified rings is also greater than 60 degrees, then that ring is considered an outlier. The outliers are highlighted in purple. The color gray indicates Mogul did not find sufficient equivalents in the CSD to analyse the geometry.





5.7 Other polymers [i](#)

There are no such residues in this entry.

5.8 Polymer linkage issues [i](#)

There are no chain breaks in this entry.

6 Fit of model and data [i](#)

6.1 Protein, DNA and RNA chains [i](#)

In the following table, the column labelled ‘#RSRZ> 2’ contains the number (and percentage) of RSRZ outliers, followed by percent RSRZ outliers for the chain as percentile scores relative to all X-ray entries and entries of similar resolution. The OWAB column contains the minimum, median, 95th percentile and maximum values of the occupancy-weighted average B-factor per residue. The column labelled ‘Q< 0.9’ lists the number of (and percentage) of residues with an average occupancy less than 0.9.

Mol	Chain	Analysed	<RSRZ>	#RSRZ>2	OWAB(Å ²)	Q<0.9
1	A	164/164 (100%)	-0.21	5 (3%) 50 47	7, 14, 39, 74	0
1	B	164/164 (100%)	-0.41	1 (0%) 89 89	6, 13, 25, 40	0
All	All	328/328 (100%)	-0.31	6 (1%) 68 67	6, 13, 36, 74	0

All (6) RSRZ outliers are listed below:

Mol	Chain	Res	Type	RSRZ
1	A	213	GLY	3.9
1	A	215	GLY	3.2
1	B	269	GLY	2.4
1	A	111	GLU	2.4
1	A	214	LYS	2.2
1	A	217	GLY	2.2

6.2 Non-standard residues in protein, DNA, RNA chains [i](#)

There are no non-standard protein/DNA/RNA residues in this entry.

6.3 Carbohydrates [i](#)

There are no carbohydrates in this entry.

6.4 Ligands [i](#)

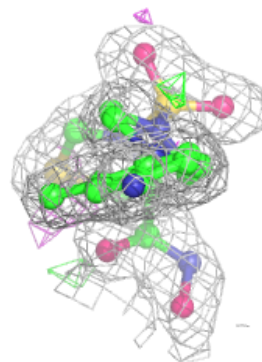
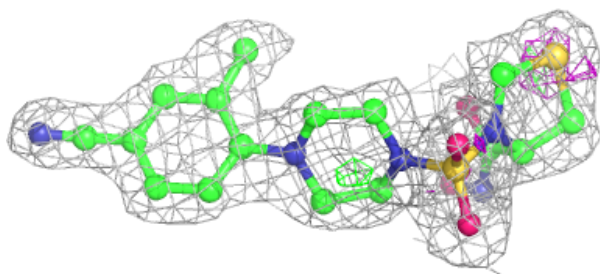
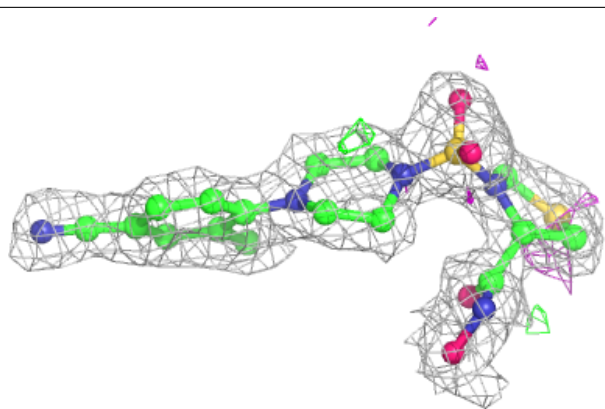
In the following table, the Atoms column lists the number of modelled atoms in the group and the number defined in the chemical component dictionary. The B-factors column lists the minimum, median, 95th percentile and maximum values of B factors of atoms in the group. The column labelled ‘Q< 0.9’ lists the number of atoms with occupancy less than 0.9.

Mol	Type	Chain	Res	Atoms	RSCC	RSR	B-factors(\AA^2)	Q<0.9
5	EDO	A	308	4/4	0.71	0.21	51,53,55,56	0
6	PGO	B	310	5/5	0.74	0.18	50,52,54,57	0
6	PGO	A	309	5/5	0.78	0.20	32,38,46,47	0
5	EDO	B	308	4/4	0.82	0.18	50,51,53,57	0
5	EDO	B	307	4/4	0.84	0.12	46,50,50,53	0
5	EDO	A	307	4/4	0.87	0.14	44,46,47,48	0
7	DMS	B	309	4/4	0.87	0.13	35,37,42,51	0
3	CA	A	305	1/1	0.95	0.07	20,20,20,20	0
4	LTQ	A	306	27/27	0.95	0.11	13,18,24,27	0
3	CA	A	304	1/1	0.96	0.06	29,29,29,29	0
4	LTQ	B	306	27/27	0.96	0.09	12,16,20,24	0
3	CA	B	304	1/1	0.99	0.04	21,21,21,21	0
2	ZN	A	302	1/1	0.99	0.06	17,17,17,17	0
3	CA	B	305	1/1	0.99	0.07	13,13,13,13	0
3	CA	B	303	1/1	1.00	0.05	8,8,8,8	0
2	ZN	B	301	1/1	1.00	0.06	10,10,10,10	0
3	CA	A	303	1/1	1.00	0.06	10,10,10,10	0
2	ZN	B	302	1/1	1.00	0.05	11,11,11,11	0
2	ZN	A	301	1/1	1.00	0.05	12,12,12,12	0

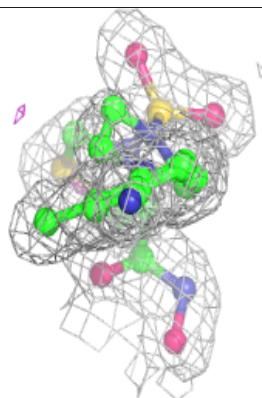
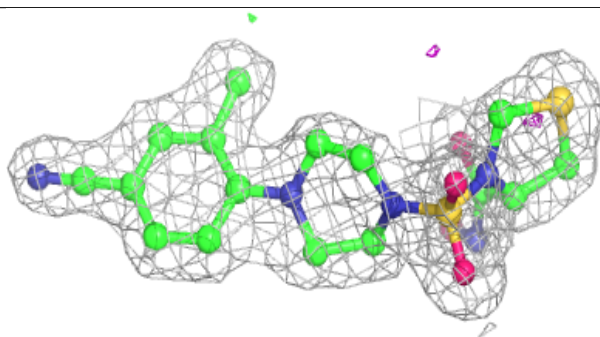
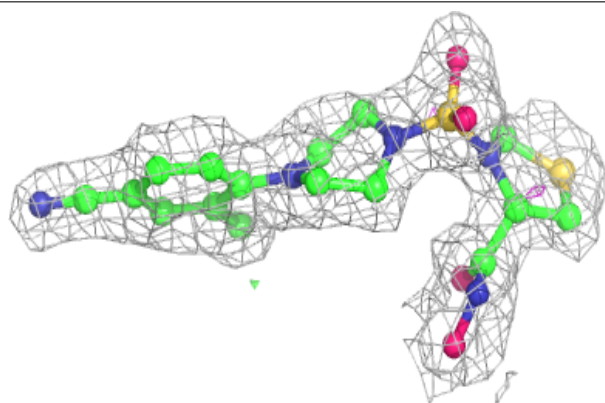
The following is a graphical depiction of the model fit to experimental electron density of all instances of the Ligand of Interest. In addition, ligands with molecular weight > 250 and outliers as shown on the geometry validation Tables will also be included. Each fit is shown from different orientation to approximate a three-dimensional view.

Electron density around LTQ A 306:

$2mF_o-DF_c$ (at 0.7 rmsd) in gray
 mF_o-DF_c (at 3 rmsd) in purple (negative)
and green (positive)

**Electron density around LTQ B 306:**

$2mF_o-DF_c$ (at 0.7 rmsd) in gray
 mF_o-DF_c (at 3 rmsd) in purple (negative)
and green (positive)



6.5 Other polymers [i](#)

There are no such residues in this entry.