



Full wwPDB X-ray Structure Validation Report ⓘ

May 24, 2020 – 09:39 am BST

PDB ID : 4CXX
Title : Crystal structure of human FTO in complex with acylhydrazine inhibitor 16
Authors : Toh, D.W.; Sun, L.; Tan, J.; Chen, Y.; Lau, L.Z.M.; Hong, W.; Woon, E.C.Y.; Gao, Y.G.
Deposited on : 2014-04-09
Resolution : 2.76 Å(reported)

This is a Full wwPDB X-ray Structure Validation Report for a publicly released PDB entry.

We welcome your comments at validation@mail.wwpdb.org

A user guide is available at

<https://www.wwpdb.org/validation/2017/XrayValidationReportHelp>

with specific help available everywhere you see the ⓘ symbol.

The following versions of software and data (see [references ⓘ](#)) were used in the production of this report:

MolProbity : 4.02b-467
Mogul : 1.8.5 (274361), CSD as541be (2020)
Xtriage (Phenix) : 1.13
EDS : 2.11
buster-report : 1.1.7 (2018)
Percentile statistics : 20191225.v01 (using entries in the PDB archive December 25th 2019)
Refmac : 5.8.0158
CCP4 : 7.0.044 (Gargrove)
Ideal geometry (proteins) : Engh & Huber (2001)
Ideal geometry (DNA, RNA) : Parkinson et al. (1996)
Validation Pipeline (wwPDB-VP) : 2.11

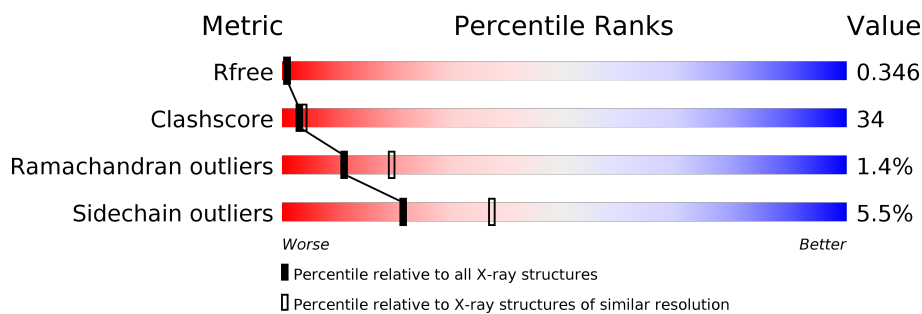
1 Overall quality at a glance

The following experimental techniques were used to determine the structure:

X-RAY DIFFRACTION

The reported resolution of this entry is 2.76 Å.

Percentile scores (ranging between 0-100) for global validation metrics of the entry are shown in the following graphic. The table shows the number of entries on which the scores are based.



Metric	Whole archive (#Entries)	Similar resolution (#Entries, resolution range(Å))
R_{free}	130704	1235 (2.78-2.74)
Clashscore	141614	1277 (2.78-2.74)
Ramachandran outliers	138981	1257 (2.78-2.74)
Sidechain outliers	138945	1257 (2.78-2.74)

The table below summarises the geometric issues observed across the polymeric chains and their fit to the electron density. The red, orange, yellow and green segments on the lower bar indicate the fraction of residues that contain outliers for ≥ 3 , 2, 1 and 0 types of geometric quality criteria respectively. A grey segment represents the fraction of residues that are not modelled. The numeric value for each fraction is indicated below the corresponding segment, with a dot representing fractions $\leq 5\%$

Mol	Chain	Length	Quality of chain
1	A	495	<div> <div style="width: 46%; background-color: green;"></div> <div style="width: 39%; background-color: yellow;"></div> <div style="width: 12%; background-color: grey;"></div> </div> <div> <div style="width: 46%;"></div> <div style="width: 39%;"></div> <div style="width: 12%;"></div> </div>

2 Entry composition

There are 4 unique types of molecules in this entry. The entry contains 3670 atoms, of which 0 are hydrogens and 0 are deuteriums.

In the tables below, the ZeroOcc column contains the number of atoms modelled with zero occupancy, the AltConf column contains the number of residues with at least one atom in alternate conformation and the Trace column contains the number of residues modelled with at most 2 atoms.

- Molecule 1 is a protein called ALPHA-KETOGLUTARATE-DEPENDENT DIOXYGENASE FTO.

Mol	Chain	Residues	Atoms					ZeroOcc	AltConf	Trace
1	A	434	Total	C	N	O	S	0	0	0
			3528	2237	609	660	22			

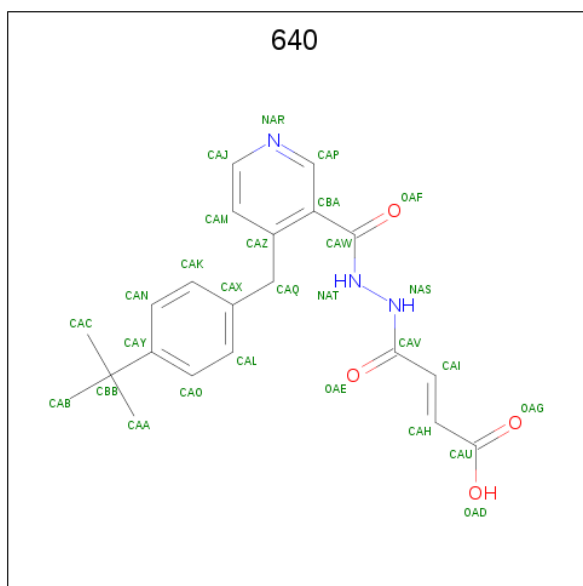
There are 21 discrepancies between the modelled and reference sequences:

Chain	Residue	Modelled	Actual	Comment	Reference
A	11	MET	-	expression tag	UNP Q9C0B1
A	12	GLY	-	expression tag	UNP Q9C0B1
A	13	SER	-	expression tag	UNP Q9C0B1
A	14	SER	-	expression tag	UNP Q9C0B1
A	15	HIS	-	expression tag	UNP Q9C0B1
A	16	HIS	-	expression tag	UNP Q9C0B1
A	17	HIS	-	expression tag	UNP Q9C0B1
A	18	HIS	-	expression tag	UNP Q9C0B1
A	19	HIS	-	expression tag	UNP Q9C0B1
A	20	HIS	-	expression tag	UNP Q9C0B1
A	21	SER	-	expression tag	UNP Q9C0B1
A	22	SER	-	expression tag	UNP Q9C0B1
A	23	GLY	-	expression tag	UNP Q9C0B1
A	24	LEU	-	expression tag	UNP Q9C0B1
A	25	VAL	-	expression tag	UNP Q9C0B1
A	26	PRO	-	expression tag	UNP Q9C0B1
A	27	ARG	-	expression tag	UNP Q9C0B1
A	28	GLY	-	expression tag	UNP Q9C0B1
A	29	SER	-	expression tag	UNP Q9C0B1
A	30	HIS	-	expression tag	UNP Q9C0B1
A	31	MET	-	expression tag	UNP Q9C0B1

- Molecule 2 is NICKEL (II) ION (three-letter code: NI) (formula: Ni).

Mol	Chain	Residues	Atoms	ZeroOcc	AltConf
2	A	1	Total Ni 1 1	0	0

- Molecule 3 is (2E)-4-{N'-[4-(4-tert-Butyl-benzyl)-pyridine-3-carbonyl]-hydrazino}-4-oxo-but-2-enoic acid (three-letter code: 640) (formula: C₂₁H₂₃N₃O₄).



Mol	Chain	Residues	Atoms	ZeroOcc	AltConf
3	A	1	Total C N O 28 21 3 4	0	0

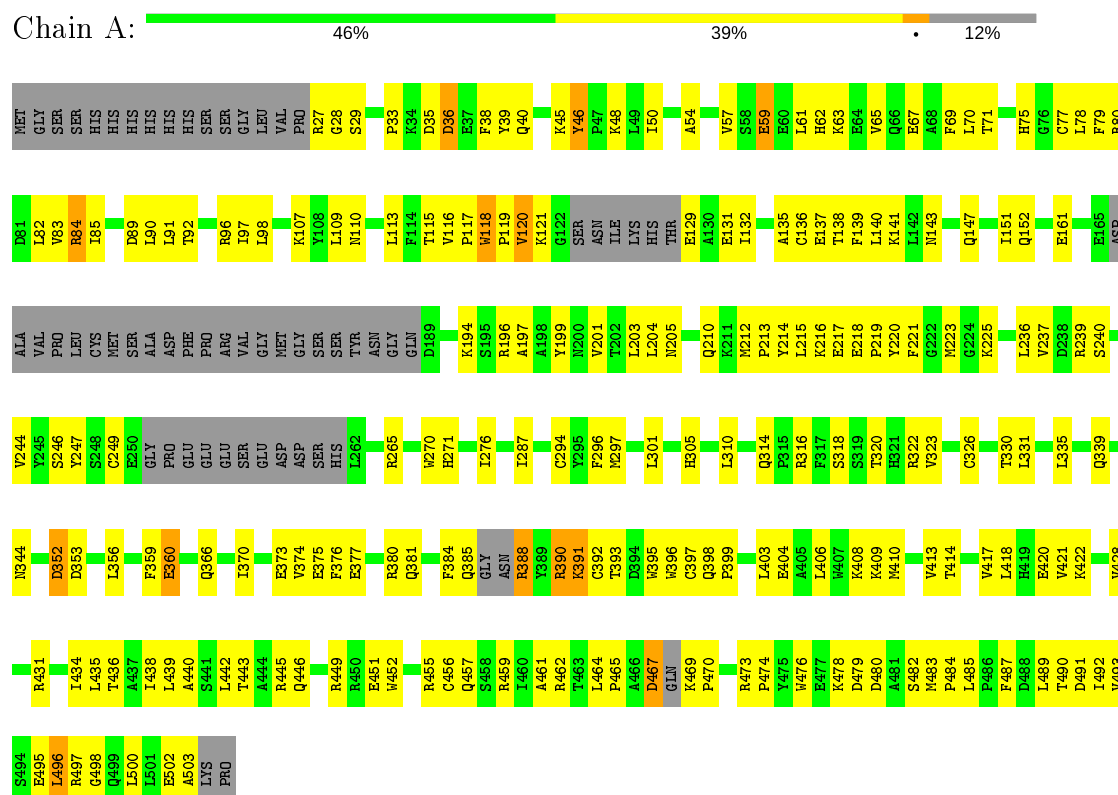
- Molecule 4 is water.

Mol	Chain	Residues	Atoms	ZeroOcc	AltConf
4	A	113	Total O 113 113	0	0

3 Residue-property plots [i](#)

These plots are drawn for all protein, RNA and DNA chains in the entry. The first graphic for a chain summarises the proportions of the various outlier classes displayed in the second graphic. The second graphic shows the sequence view annotated by issues in geometry. Residues are color-coded according to the number of geometric quality criteria for which they contain at least one outlier: green = 0, yellow = 1, orange = 2 and red = 3 or more. Stretches of 2 or more consecutive residues without any outlier are shown as a green connector. Residues present in the sample, but not in the model, are shown in grey.

- Molecule 1: ALPHA-KETOGLUTARATE-DEPENDENT DIOXYGENASE FTO



4 Data and refinement statistics

Property	Value	Source
Space group	H 3	Depositor
Cell constants a, b, c, α , β , γ	140.72 Å 140.72 Å 83.31 Å 90.00° 90.00° 120.00°	Depositor
Resolution (Å)	49.18 – 2.76 49.18 – 2.76	Depositor EDS
% Data completeness (in resolution range)	91.0 (49.18-2.76) 94.5 (49.18-2.76)	Depositor EDS
R_{merge}	0.04	Depositor
R_{sym}	(Not available)	Depositor
$\langle I/\sigma(I) \rangle$ ¹	1.07 (at 2.77 Å)	Xtriage
Refinement program	PHENIX (PHENIX.REFINE)	Depositor
R, R_{free}	0.210 , 0.263 0.321 , 0.346	Depositor DCC
R_{free} test set	748 reflections (5.00%)	wwPDB-VP
Wilson B-factor (Å ²)	85.9	Xtriage
Anisotropy	0.163	Xtriage
Bulk solvent k_{sol} (e/Å ³), B_{sol} (Å ²)	0.32 , 50.0	EDS
L-test for twinning ²	$\langle L \rangle = 0.50$, $\langle L^2 \rangle = 0.33$	Xtriage
Estimated twinning fraction	0.006 for -2/3*h-1/3*k-4/3*l,-1/3*h-2/3*k+4/3*l,-1/3*h+1/3*k+1/3*l 0.001 for -h,1/3*h-1/3*k-4/3*l,-1/3*h-2/3*k+1/3*l 0.000 for -1/3*h+1/3*k+4/3*l,-k,2/3*h+1/3*k+1/3*l 0.006 for -h,2/3*h+1/3*k+4/3*l,1/3*h+2/3*k-1/3*l 0.019 for -1/3*h-2/3*k+4/3*l,-2/3*h-1/3*k-4/3*l,1/3*h-1/3*k-1/3*l 0.007 for 1/3*h+2/3*k-4/3*l,-k,-2/3*h-1/3*k-1/3*l 0.019 for h,-h-k,-l	Xtriage
F_o, F_c correlation	0.90	EDS
Total number of atoms	3670	wwPDB-VP
Average B, all atoms (Å ²)	86.0	wwPDB-VP

Xtriage's analysis on translational NCS is as follows: *The largest off-origin peak in the Patterson function is 3.92% of the height of the origin peak. No significant pseudotranslation is detected.*

¹ Intensities estimated from amplitudes.

² Theoretical values of $\langle |L| \rangle$, $\langle L^2 \rangle$ for acentric reflections are 0.5, 0.333 respectively for untwinned datasets, and 0.375, 0.2 for perfectly twinned datasets.

5 Model quality [i](#)

5.1 Standard geometry [i](#)

Bond lengths and bond angles in the following residue types are not validated in this section: NI, 640

The Z score for a bond length (or angle) is the number of standard deviations the observed value is removed from the expected value. A bond length (or angle) with $|Z| > 5$ is considered an outlier worth inspection. RMSZ is the root-mean-square of all Z scores of the bond lengths (or angles).

Mol	Chain	Bond lengths		Bond angles	
		RMSZ	$\# Z > 5$	RMSZ	$\# Z > 5$
1	A	0.48	0/3611	0.66	4/4894 (0.1%)

There are no bond length outliers.

All (4) bond angle outliers are listed below:

Mol	Chain	Res	Type	Atoms	Z	Observed(°)	Ideal(°)
1	A	45	LYS	CB-CA-C	9.33	129.05	110.40
1	A	353	ASP	CB-CG-OD2	5.20	122.98	118.30
1	A	479	ASP	CB-CG-OD2	5.18	122.97	118.30
1	A	467	ASP	CB-CG-OD2	5.17	122.96	118.30

There are no chirality outliers.

There are no planarity outliers.

5.2 Too-close contacts [i](#)

In the following table, the Non-H and H(model) columns list the number of non-hydrogen atoms and hydrogen atoms in the chain respectively. The H(added) column lists the number of hydrogen atoms added and optimized by MolProbity. The Clashes column lists the number of clashes within the asymmetric unit, whereas Symm-Clashes lists symmetry related clashes.

Mol	Chain	Non-H	H(model)	H(added)	Clashes	Symm-Clashes
1	A	3528	0	3428	238	2
2	A	1	0	0	0	0
3	A	28	0	22	2	0
4	A	113	0	0	35	0
All	All	3670	0	3450	239	2

The all-atom clashscore is defined as the number of clashes found per 1000 atoms (including

hydrogen atoms). The all-atom clashscore for this structure is 34.

All (239) close contacts within the same asymmetric unit are listed below, sorted by their clash magnitude.

Atom-1	Atom-2	Interatomic distance (Å)	Clash overlap (Å)
1:A:77:CYS:SG	1:A:97:ILE:HG12	1.78	1.23
1:A:496:LEU:HD22	4:A:2109:HOH:O	1.37	1.20
1:A:83:VAL:HG11	1:A:109:LEU:HD13	1.19	1.19
1:A:83:VAL:HG11	1:A:109:LEU:CD1	1.79	1.10
1:A:120:VAL:HG12	1:A:121:LYS:N	1.67	1.09
1:A:120:VAL:HG22	1:A:140:LEU:HD21	1.33	1.05
1:A:120:VAL:HG12	1:A:121:LYS:H	0.90	1.05
1:A:461:ALA:HB1	1:A:470:PRO:HG2	1.41	1.01
1:A:120:VAL:CG1	1:A:121:LYS:H	1.69	1.01
1:A:492:ILE:O	1:A:496:LEU:CD2	2.08	1.00
1:A:83:VAL:HG13	1:A:109:LEU:HB3	1.44	0.98
1:A:77:CYS:HB2	1:A:392:CYS:SG	2.06	0.95
1:A:80:ARG:HH21	1:A:91:LEU:HB3	1.26	0.95
1:A:249:CYS:HB2	1:A:314:GLN:HB3	1.49	0.95
1:A:210:GLN:CD	4:A:2041:HOH:O	2.06	0.94
1:A:70:LEU:HG	4:A:2008:HOH:O	1.69	0.93
1:A:120:VAL:CG2	1:A:140:LEU:HD21	1.99	0.93
1:A:116:VAL:HG22	1:A:393:THR:HG21	1.51	0.93
1:A:77:CYS:O	1:A:79:PHE:CE2	2.24	0.90
1:A:129:GLU:HG3	4:A:2024:HOH:O	1.71	0.90
1:A:331:LEU:HD21	1:A:399:PRO:HB3	1.55	0.87
1:A:404:GLU:HG2	1:A:408:LYS:HE3	1.56	0.87
1:A:492:ILE:O	1:A:496:LEU:HD21	1.73	0.86
1:A:83:VAL:CG1	1:A:109:LEU:HD13	2.04	0.84
1:A:464:LEU:C	1:A:469:LYS:HG3	1.97	0.84
1:A:461:ALA:HB1	1:A:470:PRO:CG	2.07	0.84
1:A:360:GLU:HG3	4:A:2080:HOH:O	1.79	0.82
1:A:461:ALA:CB	1:A:470:PRO:HG2	2.10	0.82
1:A:465:PRO:O	1:A:469:LYS:HG3	1.80	0.81
1:A:97:ILE:HG13	4:A:2018:HOH:O	1.81	0.80
1:A:421:VAL:HG11	1:A:435:LEU:HD21	1.63	0.80
1:A:451:GLU:HB2	4:A:2100:HOH:O	1.78	0.80
1:A:116:VAL:HG22	1:A:393:THR:CG2	2.11	0.80
1:A:391:LYS:HB3	4:A:2012:HOH:O	1.80	0.79
1:A:77:CYS:O	1:A:79:PHE:CD2	2.35	0.79
1:A:483:MET:HB3	4:A:2092:HOH:O	1.83	0.78
1:A:96:ARG:NH2	3:A:1505:640:OAF	2.16	0.77
1:A:360:GLU:CG	4:A:2079:HOH:O	2.33	0.77

Continued on next page...

Continued from previous page...

Atom-1	Atom-2	Interatomic distance (Å)	Clash overlap (Å)
1:A:406:LEU:O	1:A:410:MET:HG3	1.85	0.76
1:A:404:GLU:O	1:A:408:LYS:HG3	1.86	0.76
1:A:464:LEU:C	1:A:469:LYS:CG	2.55	0.75
1:A:118:TRP:CD2	1:A:140:LEU:HD13	2.21	0.75
1:A:464:LEU:HB2	1:A:469:LYS:HG2	1.67	0.75
1:A:462:ARG:O	1:A:469:LYS:NZ	2.20	0.74
1:A:462:ARG:O	1:A:469:LYS:CE	2.36	0.74
1:A:92:THR:HB	4:A:2015:HOH:O	1.87	0.74
1:A:418:LEU:HD12	1:A:485:LEU:HD21	1.69	0.74
1:A:360:GLU:HG2	4:A:2079:HOH:O	1.86	0.74
1:A:438:ILE:HD12	1:A:442:LEU:HD11	1.69	0.74
1:A:438:ILE:HD12	1:A:442:LEU:CD1	2.17	0.73
1:A:464:LEU:CB	1:A:469:LYS:HG2	2.19	0.73
1:A:493:VAL:HA	1:A:496:LEU:HG	1.68	0.73
1:A:396:TRP:C	1:A:399:PRO:HD2	2.10	0.71
1:A:496:LEU:HB3	4:A:2109:HOH:O	1.90	0.71
1:A:210:GLN:OE1	4:A:2041:HOH:O	2.07	0.71
1:A:270:TRP:CE3	1:A:316:ARG:HD2	2.25	0.71
1:A:465:PRO:HB2	1:A:467:ASP:H	1.57	0.70
1:A:120:VAL:CG2	1:A:140:LEU:CD2	2.70	0.69
1:A:461:ALA:HB1	1:A:470:PRO:CD	2.22	0.69
1:A:414:THR:O	1:A:418:LEU:HG	1.91	0.69
1:A:71:THR:CG2	1:A:131:GLU:HB3	2.23	0.69
3:A:1505:640:OAG	4:A:2040:HOH:O	2.10	0.69
1:A:80:ARG:HH21	1:A:91:LEU:CB	2.04	0.68
1:A:265:ARG:HB2	4:A:2058:HOH:O	1.93	0.68
1:A:80:ARG:NH2	1:A:91:LEU:HB3	2.04	0.68
1:A:59:GLU:O	1:A:63:LYS:HG3	1.94	0.68
1:A:83:VAL:CG1	1:A:109:LEU:HB3	2.23	0.67
1:A:77:CYS:HG	1:A:97:ILE:HG12	1.60	0.67
1:A:388:ARG:O	1:A:390:ARG:HG2	1.95	0.66
1:A:326:CYS:O	1:A:330:THR:HG23	1.96	0.65
1:A:83:VAL:CG1	1:A:109:LEU:CD1	2.67	0.65
1:A:194:LYS:O	4:A:2028:HOH:O	2.15	0.65
1:A:492:ILE:O	1:A:496:LEU:HD23	1.98	0.64
1:A:214:TYR:O	1:A:215:LEU:HD23	1.98	0.64
1:A:493:VAL:HA	1:A:496:LEU:CD1	2.28	0.63
1:A:465:PRO:O	1:A:469:LYS:HE3	1.98	0.63
1:A:503:ALA:N	4:A:2110:HOH:O	2.30	0.63
1:A:109:LEU:O	1:A:110:ASN:HB2	1.96	0.62
1:A:75:HIS:HE1	1:A:131:GLU:HB2	1.63	0.62

Continued on next page...

Continued from previous page...

Atom-1	Atom-2	Interatomic distance (Å)	Clash overlap (Å)
1:A:360:GLU:HG3	4:A:2079:HOH:O	1.97	0.61
1:A:83:VAL:HG11	1:A:109:LEU:HD12	1.76	0.61
1:A:493:VAL:HA	1:A:496:LEU:CG	2.30	0.61
1:A:132:ILE:HG12	1:A:392:CYS:HB3	1.81	0.61
1:A:373:GLU:O	1:A:377:GLU:HB2	2.00	0.61
1:A:65:VAL:HA	1:A:138:THR:HG21	1.82	0.61
1:A:83:VAL:CG1	1:A:84:ARG:N	2.63	0.61
1:A:118:TRP:CE2	1:A:140:LEU:HD13	2.36	0.60
1:A:118:TRP:HB2	1:A:119:PRO:CD	2.31	0.59
1:A:83:VAL:HG12	1:A:84:ARG:N	2.16	0.59
1:A:119:PRO:HG3	1:A:137:GLU:CB	2.33	0.59
1:A:210:GLN:CG	4:A:2041:HOH:O	2.48	0.59
1:A:502:GLU:OE1	1:A:502:GLU:HA	2.02	0.59
1:A:398:GLN:HB3	1:A:399:PRO:HD3	1.85	0.59
1:A:147:GLN:HG3	1:A:197:ALA:O	2.02	0.58
1:A:376:PHE:HD1	1:A:380:ARG:HD2	1.66	0.58
1:A:492:ILE:O	1:A:496:LEU:CG	2.51	0.58
1:A:118:TRP:HB2	1:A:119:PRO:HD2	1.86	0.58
1:A:120:VAL:CG1	1:A:121:LYS:N	2.40	0.57
1:A:465:PRO:O	1:A:469:LYS:CG	2.51	0.57
1:A:359:PHE:CD1	1:A:420:GLU:HG2	2.40	0.57
1:A:57:VAL:HB	1:A:62:HIS:NE2	2.19	0.57
1:A:496:LEU:CD2	4:A:2109:HOH:O	2.17	0.57
1:A:120:VAL:HG23	1:A:140:LEU:CD2	2.35	0.57
1:A:79:PHE:CE1	1:A:388:ARG:HD3	2.40	0.57
1:A:212:MET:O	1:A:212:MET:HG3	2.04	0.57
1:A:271:HIS:HB2	1:A:310:LEU:HB2	1.86	0.57
1:A:84:ARG:HH12	1:A:455:ARG:HB2	1.70	0.56
1:A:431:ARG:O	1:A:431:ARG:HG2	2.04	0.56
1:A:297:MET:HE1	4:A:2066:HOH:O	2.05	0.56
1:A:331:LEU:CD2	1:A:399:PRO:HB3	2.34	0.56
1:A:120:VAL:HG22	1:A:140:LEU:CD2	2.22	0.56
1:A:63:LYS:O	1:A:67:GLU:HG2	2.06	0.55
1:A:244:VAL:HG22	1:A:320:THR:HG22	1.89	0.55
1:A:28:GLY:HA2	1:A:220:TYR:O	2.07	0.55
1:A:77:CYS:SG	1:A:97:ILE:CG1	2.73	0.55
1:A:75:HIS:CE1	1:A:131:GLU:HB2	2.40	0.54
1:A:492:ILE:O	1:A:496:LEU:HG	2.07	0.54
1:A:462:ARG:O	1:A:469:LYS:HD3	2.07	0.54
1:A:119:PRO:CG	1:A:137:GLU:HA	2.38	0.54
1:A:27:ARG:HD3	1:A:27:ARG:N	2.22	0.54

Continued on next page...

Continued from previous page...

Atom-1	Atom-2	Interatomic distance (Å)	Clash overlap (Å)
1:A:462:ARG:HA	1:A:469:LYS:HD3	1.89	0.54
1:A:376:PHE:CD1	1:A:380:ARG:HD2	2.43	0.54
1:A:356:LEU:HD11	1:A:413:VAL:HG13	1.90	0.53
1:A:33:PRO:HB3	1:A:39:TYR:OH	2.08	0.53
1:A:476:TRP:CG	1:A:483:MET:HG3	2.44	0.53
1:A:431:ARG:O	1:A:435:LEU:HG	2.09	0.53
1:A:83:VAL:HG22	4:A:2023:HOH:O	2.08	0.53
1:A:119:PRO:HG3	1:A:137:GLU:HA	1.91	0.53
1:A:50:ILE:HB	1:A:296:PHE:HB2	1.90	0.53
1:A:270:TRP:CD2	1:A:316:ARG:HD2	2.42	0.53
1:A:40:GLN:HB3	4:A:2002:HOH:O	2.09	0.53
1:A:220:TYR:HB2	1:A:221:PHE:CD1	2.45	0.52
1:A:449:ARG:HH12	1:A:489:LEU:HD21	1.73	0.52
1:A:473:ARG:HG3	1:A:474:PRO:HA	1.92	0.51
1:A:218:GLU:OE2	1:A:219:PRO:HD2	2.10	0.51
1:A:98:LEU:HD11	1:A:201:VAL:HB	1.91	0.51
1:A:119:PRO:HG3	1:A:137:GLU:HB2	1.93	0.51
1:A:113:LEU:CD1	1:A:203:LEU:HD11	2.41	0.51
1:A:276:ILE:HD13	1:A:305:HIS:CD2	2.45	0.51
1:A:335:LEU:HD23	1:A:403:LEU:HD21	1.91	0.51
1:A:84:ARG:NH1	1:A:455:ARG:HB2	2.26	0.51
1:A:132:ILE:HG12	1:A:392:CYS:CB	2.41	0.51
1:A:462:ARG:C	1:A:469:LYS:HD3	2.31	0.51
1:A:113:LEU:HD12	1:A:203:LEU:CD1	2.41	0.50
1:A:388:ARG:O	1:A:390:ARG:CG	2.59	0.50
1:A:139:PHE:CZ	1:A:204:LEU:HD21	2.45	0.50
1:A:456:CYS:HB3	1:A:457:GLN:OE1	2.11	0.50
1:A:461:ALA:HB1	1:A:470:PRO:HD2	1.93	0.50
1:A:438:ILE:HD12	1:A:442:LEU:HD12	1.93	0.50
1:A:485:LEU:HD22	1:A:492:ILE:HD13	1.94	0.50
1:A:119:PRO:CD	1:A:137:GLU:HA	2.42	0.50
1:A:205:ASN:HB2	1:A:318:SER:OG	2.12	0.50
1:A:271:HIS:HA	1:A:287:ILE:O	2.12	0.50
1:A:465:PRO:C	1:A:469:LYS:HE3	2.32	0.49
1:A:492:ILE:HG22	1:A:496:LEU:HD21	1.94	0.49
1:A:89:ASP:O	1:A:90:LEU:HD23	2.12	0.49
1:A:69:PHE:CD2	1:A:247:TYR:HD2	2.31	0.49
1:A:439:LEU:HD21	1:A:497:ARG:HG2	1.95	0.49
1:A:493:VAL:CA	1:A:496:LEU:HG	2.38	0.49
1:A:96:ARG:NH1	4:A:2015:HOH:O	2.46	0.49
1:A:236:LEU:HD22	4:A:2054:HOH:O	2.13	0.49

Continued on next page...

Continued from previous page...

Atom-1	Atom-2	Interatomic distance (Å)	Clash overlap (Å)
1:A:57:VAL:HG13	1:A:61:LEU:HD23	1.94	0.49
1:A:214:TYR:C	1:A:215:LEU:HD23	2.33	0.49
1:A:35:ASP:O	1:A:38:PHE:HB3	2.13	0.49
1:A:498:GLY:O	1:A:502:GLU:HG2	2.13	0.49
1:A:129:GLU:HB2	1:A:132:ILE:CD1	2.43	0.48
1:A:118:TRP:HD1	1:A:118:TRP:O	1.96	0.48
1:A:220:TYR:HB2	1:A:221:PHE:CE1	2.48	0.48
1:A:352:ASP:OD1	1:A:352:ASP:N	2.47	0.48
1:A:469:LYS:HB2	4:A:2104:HOH:O	2.13	0.48
1:A:381:GLN:OE1	1:A:452:TRP:HH2	1.97	0.48
1:A:46:TYR:N	1:A:46:TYR:CD1	2.81	0.48
1:A:462:ARG:O	1:A:469:LYS:CD	2.61	0.48
1:A:246:SER:HB2	1:A:316:ARG:HH21	1.79	0.47
1:A:244:VAL:O	1:A:294:CYS:HA	2.14	0.47
1:A:462:ARG:CA	1:A:469:LYS:HD3	2.42	0.47
1:A:117:PRO:HG3	1:A:395:TRP:CD1	2.50	0.47
1:A:396:TRP:O	1:A:399:PRO:HD2	2.15	0.47
1:A:223:MET:HB3	1:A:310:LEU:CD1	2.44	0.47
1:A:82:LEU:HD13	1:A:91:LEU:HD13	1.96	0.47
1:A:196:ARG:HB3	1:A:240:SER:HA	1.97	0.47
1:A:360:GLU:CG	4:A:2080:HOH:O	2.52	0.47
1:A:480:ASP:OD1	1:A:482:SER:OG	2.23	0.47
1:A:138:THR:O	1:A:141:LYS:HB2	2.15	0.47
1:A:417:VAL:O	1:A:421:VAL:HG23	2.16	0.46
1:A:135:ALA:HB2	4:A:2010:HOH:O	2.16	0.46
1:A:83:VAL:CG1	1:A:84:ARG:H	2.28	0.46
1:A:388:ARG:HH22	1:A:391:LYS:N	2.13	0.46
1:A:77:CYS:O	1:A:79:PHE:HE2	1.93	0.46
1:A:147:GLN:O	1:A:151:ILE:HG13	2.15	0.46
1:A:449:ARG:NH1	1:A:489:LEU:HD21	2.30	0.46
1:A:384:PHE:HE1	1:A:456:CYS:HA	1.81	0.46
1:A:161:GLU:OE1	1:A:161:GLU:HA	2.16	0.46
1:A:249:CYS:HB2	1:A:314:GLN:CB	2.34	0.46
1:A:78:LEU:HD13	4:A:2039:HOH:O	2.16	0.46
1:A:496:LEU:CB	4:A:2109:HOH:O	2.55	0.45
1:A:97:ILE:HG22	1:A:204:LEU:HB2	1.98	0.45
1:A:120:VAL:CG2	1:A:140:LEU:HD11	2.45	0.45
1:A:203:LEU:HD23	4:A:2017:HOH:O	2.15	0.45
1:A:409:LYS:HE2	4:A:2075:HOH:O	2.16	0.45
1:A:98:LEU:HD22	1:A:113:LEU:HB2	1.99	0.45
1:A:434:ILE:O	1:A:438:ILE:HG12	2.17	0.45

Continued on next page...

Continued from previous page...

Atom-1	Atom-2	Interatomic distance (Å)	Clash overlap (Å)
1:A:199:TYR:HA	1:A:322:ARG:O	2.17	0.45
1:A:237:VAL:CG2	1:A:323:VAL:HG12	2.47	0.44
1:A:107:LYS:NZ	1:A:377:GLU:OE1	2.44	0.44
1:A:78:LEU:HD23	1:A:97:ILE:HB	1.99	0.44
1:A:119:PRO:HG3	1:A:137:GLU:CA	2.47	0.44
1:A:79:PHE:CZ	1:A:388:ARG:NE	2.85	0.44
1:A:118:TRP:CH2	1:A:143:ASN:ND2	2.85	0.44
1:A:116:VAL:HG12	1:A:136:CYS:SG	2.57	0.44
1:A:246:SER:CB	1:A:316:ARG:HH21	2.31	0.44
1:A:85:ILE:HG23	1:A:85:ILE:O	2.18	0.44
1:A:110:ASN:HA	4:A:2022:HOH:O	2.17	0.43
1:A:500:LEU:HD23	1:A:500:LEU:HA	1.78	0.43
1:A:440:ALA:O	1:A:443:THR:HG22	2.17	0.43
1:A:129:GLU:HB2	1:A:132:ILE:HD13	1.99	0.43
1:A:217:GLU:HG2	4:A:2043:HOH:O	2.18	0.43
1:A:491:ASP:O	1:A:495:GLU:HB2	2.19	0.43
1:A:483:MET:HA	1:A:484:PRO:HD2	1.67	0.43
1:A:464:LEU:CB	1:A:469:LYS:CG	2.94	0.42
1:A:48:LYS:C	1:A:301:LEU:HD13	2.40	0.42
1:A:212:MET:N	1:A:213:PRO:HD3	2.35	0.42
1:A:366:GLN:O	1:A:370:ILE:HD12	2.19	0.42
1:A:69:PHE:CD2	1:A:247:TYR:CD2	3.07	0.42
1:A:496:LEU:HD23	1:A:496:LEU:N	2.35	0.42
1:A:97:ILE:HA	1:A:97:ILE:HD12	1.80	0.42
1:A:476:TRP:CZ2	1:A:487:PHE:HA	2.55	0.42
1:A:75:HIS:HE1	1:A:131:GLU:CB	2.29	0.42
1:A:344:ASN:O	1:A:356:LEU:HA	2.20	0.41
1:A:446:GLN:OE1	1:A:446:GLN:HA	2.20	0.41
1:A:374:VAL:HG13	1:A:375:GLU:N	2.36	0.41
1:A:61:LEU:O	1:A:61:LEU:HD12	2.20	0.41
1:A:428:VAL:HG23	1:A:431:ARG:HH21	1.86	0.41
1:A:464:LEU:CA	1:A:469:LYS:HG2	2.50	0.41
1:A:418:LEU:CD1	1:A:485:LEU:HD21	2.46	0.41
1:A:493:VAL:HA	1:A:496:LEU:HD11	2.00	0.41
1:A:120:VAL:HG23	1:A:140:LEU:HD22	2.02	0.40
1:A:80:ARG:NH2	1:A:91:LEU:HD23	2.36	0.40
1:A:440:ALA:HA	1:A:443:THR:HG22	2.02	0.40

All (2) symmetry-related close contacts are listed below. The label for Atom-2 includes the symmetry operator and encoded unit-cell translations to be applied.

Atom-1	Atom-2	Interatomic distance (Å)	Clash overlap (Å)
1:A:36:ASP:OD1	1:A:216:LYS:NZ[6_555]	1.85	0.35
1:A:36:ASP:CG	1:A:216:LYS:NZ[6_555]	2.19	0.01

5.3 Torsion angles [i](#)

5.3.1 Protein backbone [i](#)

In the following table, the Percentiles column shows the percent Ramachandran outliers of the chain as a percentile score with respect to all X-ray entries followed by that with respect to entries of similar resolution.

The Analysed column shows the number of residues for which the backbone conformation was analysed, and the total number of residues.

Mol	Chain	Analysed	Favoured	Allowed	Outliers	Percentiles
1	A	424/495 (86%)	383 (90%)	35 (8%)	6 (1%)	11 19

All (6) Ramachandran outliers are listed below:

Mol	Chain	Res	Type
1	A	436	THR
1	A	478	LYS
1	A	54	ALA
1	A	459	ARG
1	A	46	TYR
1	A	120	VAL

5.3.2 Protein sidechains [i](#)

In the following table, the Percentiles column shows the percent sidechain outliers of the chain as a percentile score with respect to all X-ray entries followed by that with respect to entries of similar resolution.

The Analysed column shows the number of residues for which the sidechain conformation was analysed, and the total number of residues.

Mol	Chain	Analysed	Rotameric	Outliers	Percentiles
1	A	383/436 (88%)	362 (94%)	21 (6%)	21 37

All (21) residues with a non-rotameric sidechain are listed below:

Mol	Chain	Res	Type
1	A	29	SER
1	A	36	ASP
1	A	59	GLU
1	A	84	ARG
1	A	115	THR
1	A	118	TRP
1	A	152	GLN
1	A	225	LYS
1	A	239	ARG
1	A	339	GLN
1	A	352	ASP
1	A	360	GLU
1	A	385	GLN
1	A	388	ARG
1	A	390	ARG
1	A	391	LYS
1	A	397	CYS
1	A	422	LYS
1	A	445	ARG
1	A	490	THR
1	A	496	LEU

Some sidechains can be flipped to improve hydrogen bonding and reduce clashes. All (1) such sidechains are listed below:

Mol	Chain	Res	Type
1	A	339	GLN

5.3.3 RNA ⓘ

There are no RNA molecules in this entry.

5.4 Non-standard residues in protein, DNA, RNA chains ⓘ

There are no non-standard protein/DNA/RNA residues in this entry.

5.5 Carbohydrates ⓘ

There are no carbohydrates in this entry.

5.6 Ligand geometry

Of 2 ligands modelled in this entry, 1 is monoatomic - leaving 1 for Mogul analysis.

In the following table, the Counts columns list the number of bonds (or angles) for which Mogul statistics could be retrieved, the number of bonds (or angles) that are observed in the model and the number of bonds (or angles) that are defined in the Chemical Component Dictionary. The Link column lists molecule types, if any, to which the group is linked. The Z score for a bond length (or angle) is the number of standard deviations the observed value is removed from the expected value. A bond length (or angle) with $|Z| > 2$ is considered an outlier worth inspection. RMSZ is the root-mean-square of all Z scores of the bond lengths (or angles).

Mol	Type	Chain	Res	Link	Bond lengths			Bond angles		
					Counts	RMSZ	# Z > 2	Counts	RMSZ	# Z > 2
3	640	A	1505	2	26,29,29	3.21	4 (15%)	33,40,40	2.29	7 (21%)

In the following table, the Chirals column lists the number of chiral outliers, the number of chiral centers analysed, the number of these observed in the model and the number defined in the Chemical Component Dictionary. Similar counts are reported in the Torsion and Rings columns. '-' means no outliers of that kind were identified.

Mol	Type	Chain	Res	Link	Chirals	Torsions	Rings
3	640	A	1505	2	-	2/22/24/24	0/2/2/2

All (4) bond length outliers are listed below:

Mol	Chain	Res	Type	Atoms	Z	Observed(Å)	Ideal(Å)
3	A	1505	640	CAV-NAS	10.83	1.42	1.34
3	A	1505	640	CAI-CAH	8.18	1.54	1.33
3	A	1505	640	CAW-NAT	8.07	1.46	1.35
3	A	1505	640	CAQ-CAZ	2.09	1.56	1.52

All (7) bond angle outliers are listed below:

Mol	Chain	Res	Type	Atoms	Z	Observed(°)	Ideal(°)
3	A	1505	640	CAU-CAH-CAI	-8.88	104.70	123.69
3	A	1505	640	CAH-CAI-CAV	-4.95	111.89	121.56
3	A	1505	640	CAO-CAY-CBB	-3.01	115.68	121.58
3	A	1505	640	CAL-CAX-CAK	2.77	122.53	118.17
3	A	1505	640	CAN-CAK-CAX	-2.47	117.63	121.03
3	A	1505	640	CAQ-CAZ-CAM	2.30	124.24	120.46
3	A	1505	640	CAJ-CAM-CAZ	-2.28	117.49	119.47

There are no chirality outliers.

All (2) torsion outliers are listed below:

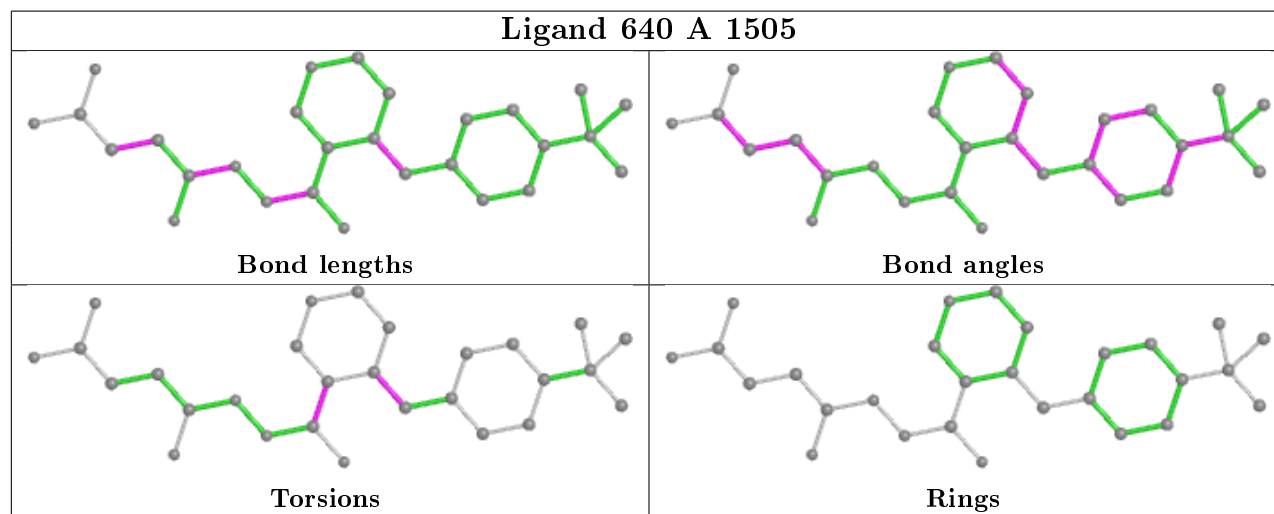
Mol	Chain	Res	Type	Atoms
3	A	1505	640	NAT-CAW-CBA-CAP
3	A	1505	640	CAX-CAQ-CAZ-CAM

There are no ring outliers.

1 monomer is involved in 2 short contacts:

Mol	Chain	Res	Type	Clashes	Symm-Clashes
3	A	1505	640	2	0

The following is a two-dimensional graphical depiction of Mogul quality analysis of bond lengths, bond angles, torsion angles, and ring geometry for all instances of the Ligand of Interest. In addition, ligands with molecular weight > 250 and outliers as shown on the validation Tables will also be included. For torsion angles, if less than 5% of the Mogul distribution of torsion angles is within 10 degrees of the torsion angle in question, then that torsion angle is considered an outlier. Any bond that is central to one or more torsion angles identified as an outlier by Mogul will be highlighted in the graph. For rings, the root-mean-square deviation (RMSD) between the ring in question and similar rings identified by Mogul is calculated over all ring torsion angles. If the average RMSD is greater than 60 degrees and the minimal RMSD between the ring in question and any Mogul-identified rings is also greater than 60 degrees, then that ring is considered an outlier. The outliers are highlighted in purple. The color gray indicates Mogul did not find sufficient equivalents in the CSD to analyse the geometry.



5.7 Other polymers [i](#)

There are no such residues in this entry.

5.8 Polymer linkage issues ⓘ

There are no chain breaks in this entry.

6 Fit of model and data [i](#)

6.1 Protein, DNA and RNA chains [i](#)

Unable to reproduce the depositors R factor - this section is therefore empty.

6.2 Non-standard residues in protein, DNA, RNA chains [i](#)

Unable to reproduce the depositors R factor - this section is therefore empty.

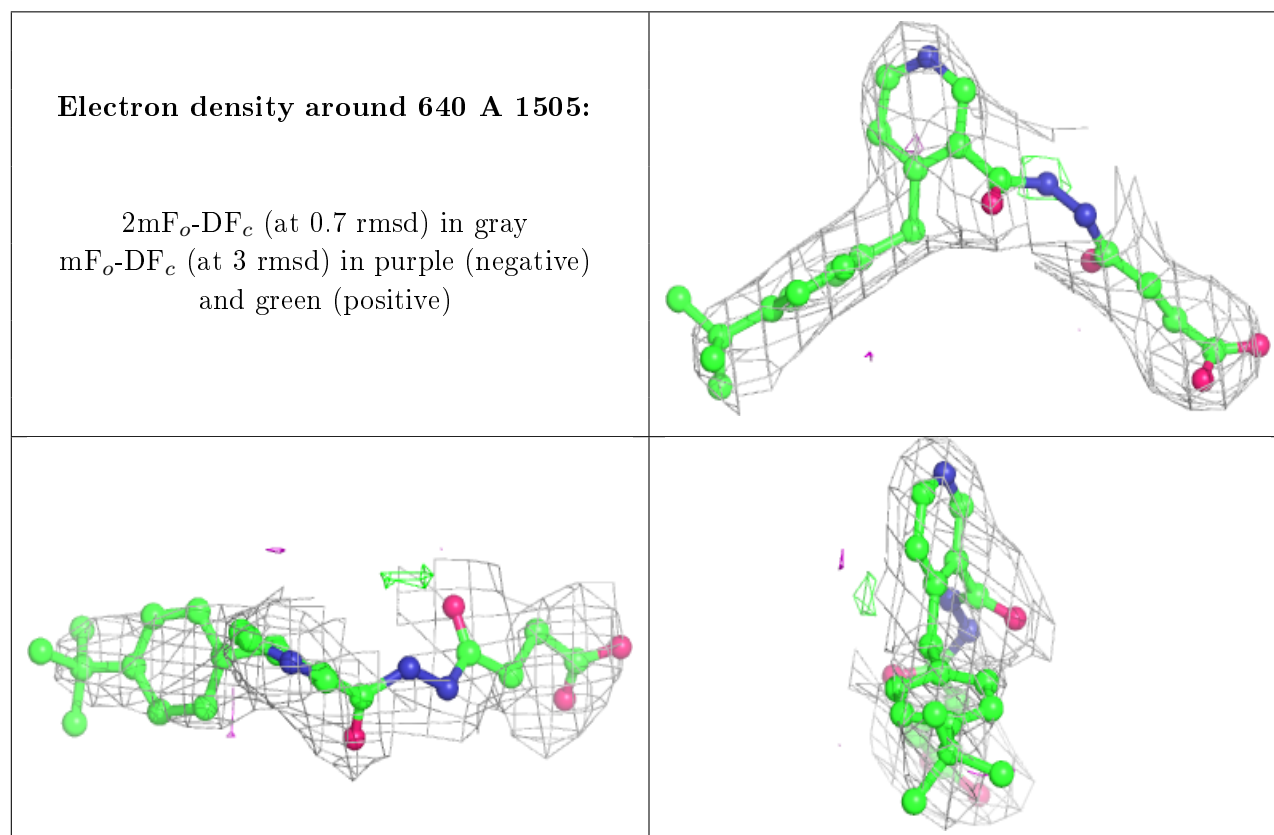
6.3 Carbohydrates [i](#)

Unable to reproduce the depositors R factor - this section is therefore empty.

6.4 Ligands [i](#)

Unable to reproduce the depositors R factor - this section is therefore empty.

The following is a graphical depiction of the model fit to experimental electron density of all instances of the Ligand of Interest. In addition, ligands with molecular weight > 250 and outliers as shown on the geometry validation Tables will also be included. Each fit is shown from different orientation to approximate a three-dimensional view.



6.5 Other polymers

Unable to reproduce the depositors R factor - this section is therefore empty.