



Full wwPDB X-ray Structure Validation Report ⓘ

Jun 14, 2020 – 10:50 am BST

PDB ID : 2CZC
Title : Crystal structure of glyceraldehyde-3-phosphate dehydrogenase from *Pyrococcus horikoshii* OT3
Authors : Ito, K.; Arai, R.; Kamo-Uchikubo, T.; Shirouzu, M.; Yokoyama, S.; RIKEN Structural Genomics/Proteomics Initiative (RSGI)
Deposited on : 2005-07-13
Resolution : 2.00 Å(reported)

This is a Full wwPDB X-ray Structure Validation Report for a publicly released PDB entry.

We welcome your comments at validation@mail.wwpdb.org

A user guide is available at

<https://www.wwpdb.org/validation/2017/XrayValidationReportHelp>

with specific help available everywhere you see the ⓘ symbol.

The following versions of software and data (see [references ⓘ](#)) were used in the production of this report:

MolProbity : 4.02b-467
Mogul : 1.8.5 (274361), CSD as541be (2020)
Xtriage (Phenix) : 1.13
EDS : 2.11
buster-report : 1.1.7 (2018)
Percentile statistics : 20191225.v01 (using entries in the PDB archive December 25th 2019)
Refmac : 5.8.0158
CCP4 : 7.0.044 (Gargrove)
Ideal geometry (proteins) : Engh & Huber (2001)
Ideal geometry (DNA, RNA) : Parkinson et al. (1996)
Validation Pipeline (wwPDB-VP) : 2.11

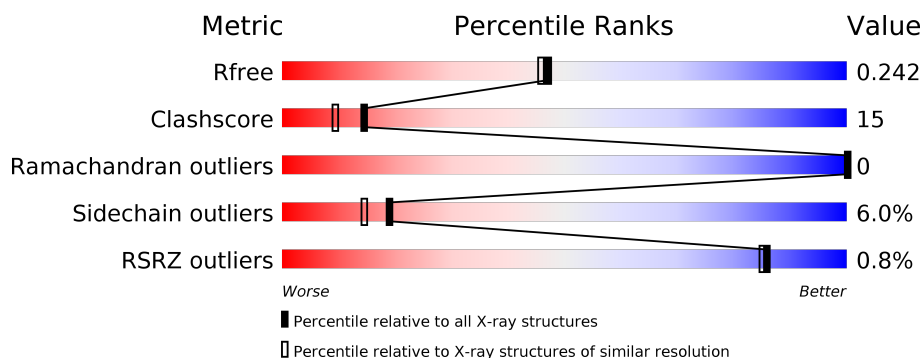
1 Overall quality at a glance

The following experimental techniques were used to determine the structure:

X-RAY DIFFRACTION

The reported resolution of this entry is 2.00 Å.

Percentile scores (ranging between 0-100) for global validation metrics of the entry are shown in the following graphic. The table shows the number of entries on which the scores are based.



Metric	Whole archive (#Entries)	Similar resolution (#Entries, resolution range(Å))
R_{free}	130704	8085 (2.00-2.00)
Clashscore	141614	9178 (2.00-2.00)
Ramachandran outliers	138981	9054 (2.00-2.00)
Sidechain outliers	138945	9053 (2.00-2.00)
RSRZ outliers	127900	7900 (2.00-2.00)

The table below summarises the geometric issues observed across the polymeric chains and their fit to the electron density. The red, orange, yellow and green segments on the lower bar indicate the fraction of residues that contain outliers for ≥ 3 , 2, 1 and 0 types of geometric quality criteria respectively. A grey segment represents the fraction of residues that are not modelled. The numeric value for each fraction is indicated below the corresponding segment, with a dot representing fractions $\leq 5\%$. The upper red bar (where present) indicates the fraction of residues that have poor fit to the electron density. The numeric value is given above the bar.

Mol	Chain	Length	Quality of chain
1	A	334	
1	B	334	
1	C	334	
1	D	334	

The following table lists non-polymeric compounds, carbohydrate monomers and non-standard residues in protein, DNA, RNA chains that are outliers for geometric or electron-density-fit crite-

ria:

Mol	Type	Chain	Res	Chirality	Geometry	Clashes	Electron density
2	PO4	A	601	-	X	X	-
2	PO4	A	602	-	X	-	X
2	PO4	B	603	-	X	X	X
2	PO4	C	604	-	X	X	-
2	PO4	D	605	-	X	X	X

2 Entry composition [i](#)

There are 4 unique types of molecules in this entry. The entry contains 11153 atoms, of which 0 are hydrogens and 0 are deuteriums.

In the tables below, the ZeroOcc column contains the number of atoms modelled with zero occupancy, the AltConf column contains the number of residues with at least one atom in alternate conformation and the Trace column contains the number of residues modelled with at most 2 atoms.

- Molecule 1 is a protein called Glyceraldehyde-3-phosphate dehydrogenase.

Mol	Chain	Residues	Atoms					ZeroOcc	AltConf	Trace
1	A	334	Total	C	N	O	S	0	0	0
			2627	1681	443	495	8			
1	B	333	Total	C	N	O	S	0	0	0
			2619	1676	442	494	7			
1	C	333	Total	C	N	O	S	0	0	0
			2619	1676	442	494	7			
1	D	332	Total	C	N	O	S	0	0	0
			2609	1670	440	492	7			

- Molecule 2 is PHOSPHATE ION (three-letter code: PO4) (formula: O₄P).



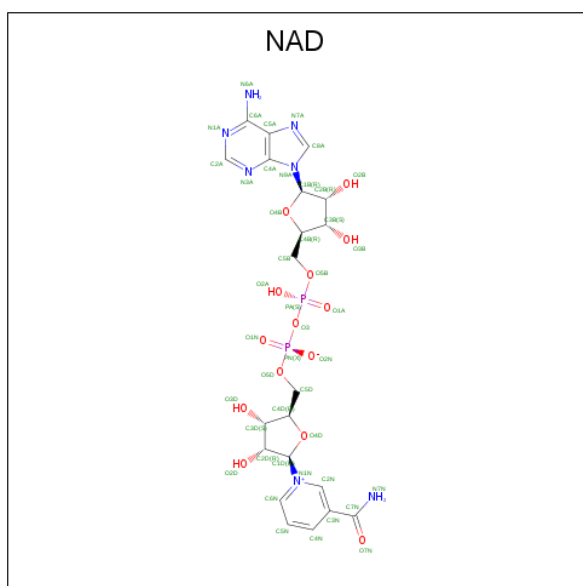
Mol	Chain	Residues	Atoms			ZeroOcc	AltConf
2	A	1	Total	O	P	0	0
			5	4	1		
2	A	1	Total	O	P	0	0
			5	4	1		

Continued on next page...

Continued from previous page...

Mol	Chain	Residues	Atoms			ZeroOcc	AltConf
2	B	1	Total	O	P	0	0
			5	4	1		
2	C	1	Total	O	P	0	0
			5	4	1		
2	D	1	Total	O	P	0	0
			5	4	1		

- Molecule 3 is NICOTINAMIDE-ADENINE-DINUCLEOTIDE (three-letter code: NAD) (formula: $C_{21}H_{27}N_7O_{14}P_2$).



Mol	Chain	Residues	Atoms					ZeroOcc	AltConf
3	A	1	Total	C	N	O	P	0	0
			44	21	7	14	2		
3	B	1	Total	C	N	O	P	0	0
			44	21	7	14	2		
3	C	1	Total	C	N	O	P	0	0
			44	21	7	14	2		
3	D	1	Total	C	N	O	P	0	0
			44	21	7	14	2		

- Molecule 4 is water.

Mol	Chain	Residues	Atoms		ZeroOcc	AltConf
4	A	147	Total	O	0	0
			147	147		
4	B	126	Total	O	0	0
			126	126		

Continued on next page...

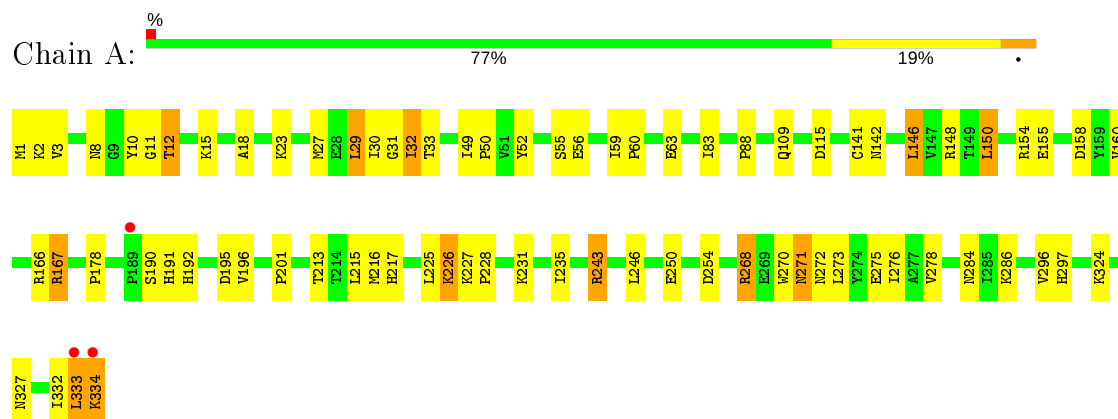
Continued from previous page...

Mol	Chain	Residues	Atoms		ZeroOcc	AltConf
4	C	113	Total 113	O 113	0	0
4	D	92	Total 92	O 92	0	0

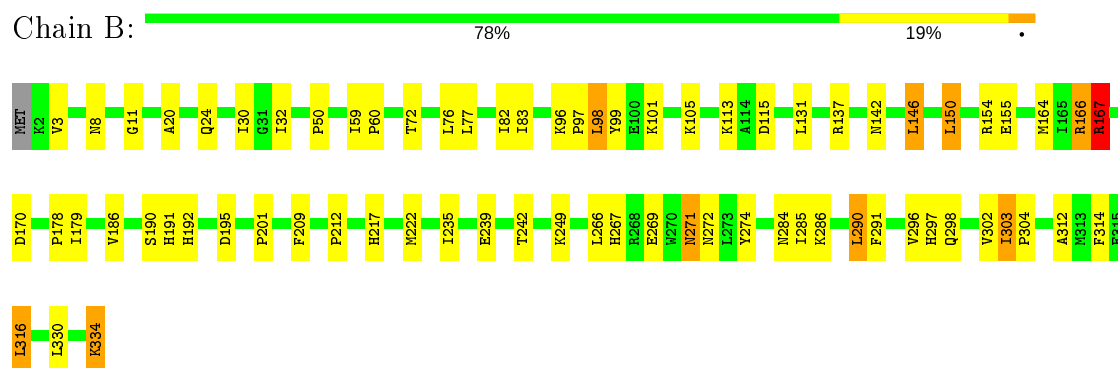
3 Residue-property plots

These plots are drawn for all protein, RNA and DNA chains in the entry. The first graphic for a chain summarises the proportions of the various outlier classes displayed in the second graphic. The second graphic shows the sequence view annotated by issues in geometry and electron density. Residues are color-coded according to the number of geometric quality criteria for which they contain at least one outlier: green = 0, yellow = 1, orange = 2 and red = 3 or more. A red dot above a residue indicates a poor fit to the electron density ($RSRZ > 2$). Stretches of 2 or more consecutive residues without any outlier are shown as a green connector. Residues present in the sample, but not in the model, are shown in grey.

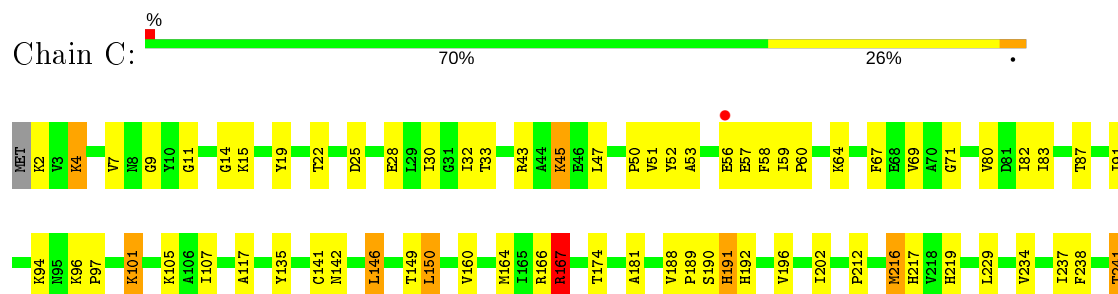
- Molecule 1: Glyceraldehyde-3-phosphate dehydrogenase

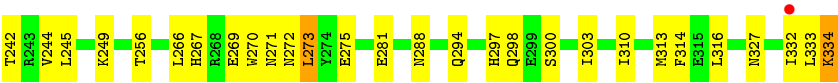


- Molecule 1: Glyceraldehyde-3-phosphate dehydrogenase

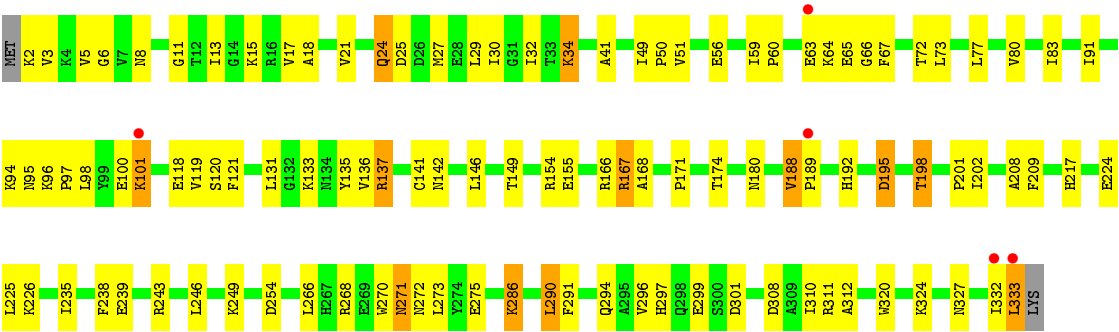


- Molecule 1: Glyceraldehyde-3-phosphate dehydrogenase





● Molecule 1: Glyceraldehyde-3-phosphate dehydrogenase



4 Data and refinement statistics

Property	Value	Source
Space group	P 21 21 21	Depositor
Cell constants a, b, c, α , β , γ	67.69Å 127.19Å 161.45Å 90.00° 90.00° 90.00°	Depositor
Resolution (Å)	49.96 – 2.00 49.96 – 2.00	Depositor EDS
% Data completeness (in resolution range)	88.2 (49.96-2.00) 88.3 (49.96-2.00)	Depositor EDS
R_{merge}	(Not available)	Depositor
R_{sym}	0.08	Depositor
$\langle I/\sigma(I) \rangle$ ¹	1.82 (at 2.00Å)	Xtriage
Refinement program	CNS 1.1	Depositor
R, R_{free}	0.205 , 0.241 0.207 , 0.242	Depositor DCC
R_{free} test set	8869 reflections (10.00%)	wwPDB-VP
Wilson B-factor (Å ²)	25.0	Xtriage
Anisotropy	0.279	Xtriage
Bulk solvent k_{sol} (e/Å ³), B_{sol} (Å ²)	0.36 , 48.0	EDS
L-test for twinning ²	$\langle L \rangle = 0.50$, $\langle L^2 \rangle = 0.33$	Xtriage
Estimated twinning fraction	No twinning to report.	Xtriage
F_o, F_c correlation	0.95	EDS
Total number of atoms	11153	wwPDB-VP
Average B, all atoms (Å ²)	29.0	wwPDB-VP

Xtriage's analysis on translational NCS is as follows: *The largest off-origin peak in the Patterson function is 3.03% of the height of the origin peak. No significant pseudotranslation is detected.*

¹Intensities estimated from amplitudes.

²Theoretical values of $\langle |L| \rangle$, $\langle L^2 \rangle$ for acentric reflections are 0.5, 0.333 respectively for untwinned datasets, and 0.375, 0.2 for perfectly twinned datasets.

5 Model quality

5.1 Standard geometry

Bond lengths and bond angles in the following residue types are not validated in this section: PO4, NAD

The Z score for a bond length (or angle) is the number of standard deviations the observed value is removed from the expected value. A bond length (or angle) with $|Z| > 5$ is considered an outlier worth inspection. RMSZ is the root-mean-square of all Z scores of the bond lengths (or angles).

Mol	Chain	Bond lengths		Bond angles	
		RMSZ	$\# Z > 5$	RMSZ	$\# Z > 5$
1	A	0.45	0/2677	0.71	2/3624 (0.1%)
1	B	0.44	0/2669	0.70	1/3614 (0.0%)
1	C	0.43	0/2669	0.68	1/3614 (0.0%)
1	D	0.43	0/2659	0.67	0/3603
All	All	0.44	0/10674	0.69	4/14455 (0.0%)

There are no bond length outliers.

All (4) bond angle outliers are listed below:

Mol	Chain	Res	Type	Atoms	Z	Observed(°)	Ideal(°)
1	A	243	ARG	NE-CZ-NH2	-8.00	116.30	120.30
1	A	243	ARG	NE-CZ-NH1	7.96	124.28	120.30
1	C	167	ARG	NE-CZ-NH2	-5.21	117.70	120.30
1	B	167	ARG	NE-CZ-NH2	-5.17	117.71	120.30

There are no chirality outliers.

There are no planarity outliers.

5.2 Too-close contacts

In the following table, the Non-H and H(model) columns list the number of non-hydrogen atoms and hydrogen atoms in the chain respectively. The H(added) column lists the number of hydrogen atoms added and optimized by MolProbity. The Clashes column lists the number of clashes within the asymmetric unit, whereas Symm-Clashes lists symmetry related clashes.

Mol	Chain	Non-H	H(model)	H(added)	Clashes	Symm-Clashes
1	A	2627	0	2667	68	0
1	B	2619	0	2655	67	0
1	C	2619	0	2655	95	0

Continued on next page...

Continued from previous page...

Mol	Chain	Non-H	H(model)	H(added)	Clashes	Symm-Clashes
1	D	2609	0	2642	106	0
2	A	10	0	0	3	0
2	B	5	0	0	4	0
2	C	5	0	0	6	0
2	D	5	0	0	5	0
3	A	44	0	26	6	0
3	B	44	0	26	3	0
3	C	44	0	26	6	0
3	D	44	0	25	5	0
4	A	147	0	0	7	0
4	B	126	0	0	5	0
4	C	113	0	0	4	0
4	D	92	0	0	5	0
All	All	11153	0	10722	330	0

The all-atom clashscore is defined as the number of clashes found per 1000 atoms (including hydrogen atoms). The all-atom clashscore for this structure is 15.

All (330) close contacts within the same asymmetric unit are listed below, sorted by their clash magnitude.

Atom-1	Atom-2	Interatomic distance (Å)	Clash overlap (Å)
1:D:120:SER:OG	1:D:137:ARG:HD2	1.33	1.29
1:D:142:ASN:HD22	2:D:605:PO4:P	1.83	1.01
1:A:286:LYS:HE3	1:D:189:PRO:HD2	1.42	1.00
1:A:333:LEU:O	1:A:334:LYS:HD3	1.61	0.99
1:B:154:ARG:HH21	1:B:201:PRO:HG2	1.27	0.98
1:D:320:TRP:O	1:D:324:LYS:HG2	1.65	0.95
1:D:142:ASN:ND2	2:D:605:PO4:O2	2.07	0.87
1:D:167:ARG:HG3	1:D:217:HIS:CE1	2.10	0.87
1:D:120:SER:HG	1:D:137:ARG:HD2	1.37	0.85
1:A:243:ARG:HD3	1:A:327:ASN:OD1	1.79	0.82
1:B:192:HIS:HE1	2:B:603:PO4:O2	1.63	0.82
1:D:120:SER:OG	1:D:137:ARG:CD	2.24	0.81
1:B:166:ARG:NH2	2:B:603:PO4:O3	2.14	0.80
1:C:4:LYS:HE2	1:C:28:GLU:OE1	1.81	0.80
1:B:142:ASN:ND2	2:B:603:PO4:O2	2.11	0.79
1:A:3:VAL:CG1	1:A:27:MET:HG2	2.13	0.79
1:C:56:GLU:O	1:C:59:ILE:HG22	1.82	0.79
1:D:238:PHE:HB3	1:D:246:LEU:HD11	1.64	0.78
1:A:333:LEU:O	1:A:334:LYS:CD	2.30	0.78
1:C:190:SER:OG	1:C:192:HIS:HD2	1.66	0.78

Continued on next page...

Continued from previous page...

Atom-1	Atom-2	Interatomic distance (Å)	Clash overlap (Å)
1:D:120:SER:HB2	1:D:198:THR:HG23	1.65	0.76
1:B:97:PRO:O	1:B:101:LYS:HD3	1.85	0.76
1:A:284:ASN:HD22	1:D:188:VAL:HG13	1.50	0.76
1:B:303:ILE:HG13	1:B:304:PRO:HD3	1.70	0.74
1:B:334:LYS:HD3	4:B:639:HOH:O	1.87	0.74
1:A:216:MET:HB3	1:A:296:VAL:O	1.87	0.74
1:A:12:THR:HG23	3:A:501:NAD:O1A	1.87	0.73
1:B:113:LYS:HE2	1:B:115:ASP:OD2	1.88	0.73
1:C:167:ARG:HH11	1:C:298:GLN:HG3	1.53	0.73
1:C:97:PRO:O	1:C:101:LYS:HE2	1.89	0.72
1:B:154:ARG:NH2	1:B:201:PRO:HG2	2.03	0.72
1:D:202:ILE:O	1:D:202:ILE:HD12	1.90	0.72
1:D:98:LEU:O	1:D:101:LYS:HD3	1.90	0.72
1:B:166:ARG:HG3	1:B:209:PHE:O	1.90	0.72
1:D:195:ASP:O	1:D:198:THR:HG22	1.91	0.71
1:B:190:SER:OG	1:B:192:HIS:HD2	1.73	0.71
1:B:191:HIS:CD2	4:B:682:HOH:O	2.44	0.71
1:C:245:LEU:CD1	1:C:275:GLU:HG3	2.21	0.71
1:D:142:ASN:ND2	2:D:605:PO4:O1	2.25	0.70
1:D:56:GLU:HG2	1:D:72:THR:HG21	1.74	0.70
1:D:120:SER:CB	1:D:137:ARG:HD2	2.21	0.70
1:D:167:ARG:HG3	1:D:217:HIS:HE1	1.56	0.69
1:C:64:LYS:O	1:C:64:LYS:HD3	1.93	0.69
1:A:327:ASN:HD22	1:A:334:LYS:NZ	1.90	0.69
1:D:24:GLN:HG3	1:D:311:ARG:NH1	2.08	0.69
1:D:271:ASN:HB3	4:D:664:HOH:O	1.92	0.68
1:B:272:ASN:HA	1:B:297:HIS:CE1	2.29	0.68
1:B:303:ILE:HG13	1:B:304:PRO:CD	2.25	0.67
1:C:59:ILE:N	1:C:60:PRO:HD2	2.08	0.67
1:A:56:GLU:H	1:A:56:GLU:CD	1.98	0.66
1:D:273:LEU:HD13	1:D:275:GLU:O	1.95	0.65
1:D:83:ILE:HD12	1:D:83:ILE:O	1.96	0.65
1:C:216:MET:HG3	1:C:256:THR:HB	1.79	0.65
1:C:80:VAL:HG21	1:C:83:ILE:HG23	1.77	0.65
1:D:59:ILE:N	1:D:60:PRO:HD2	2.11	0.65
1:B:249:LYS:HE2	4:B:606:HOH:O	1.97	0.65
1:C:196:VAL:HG11	1:C:202:ILE:HD11	1.79	0.65
1:A:284:ASN:ND2	1:D:188:VAL:HG13	2.11	0.64
1:D:80:VAL:HG21	1:D:83:ILE:HG23	1.79	0.64
1:D:149:THR:HG21	1:D:294:GLN:OE1	1.97	0.64
1:D:120:SER:CB	1:D:198:THR:HG23	2.28	0.64

Continued on next page...

Continued from previous page...

Atom-1	Atom-2	Interatomic distance (Å)	Clash overlap (Å)
1:A:227:LYS:HG3	1:A:228:PRO:HD2	1.80	0.64
1:A:88:PRO:HD3	3:A:501:NAD:O4B	1.98	0.63
1:B:272:ASN:HA	1:B:297:HIS:HE1	1.63	0.63
1:C:82:ILE:CD1	1:C:313:MET:HE1	2.27	0.63
1:C:7:VAL:CG1	1:C:32:ILE:HG22	2.27	0.63
1:D:142:ASN:ND2	2:D:605:PO4:P	2.65	0.63
1:C:2:LYS:HD3	1:C:25:ASP:O	1.99	0.63
1:A:59:ILE:N	1:A:60:PRO:HD2	2.14	0.62
1:D:3:VAL:CG1	1:D:27:MET:HB3	2.29	0.62
1:D:32:ILE:C	1:D:32:ILE:HD12	2.19	0.62
1:B:217:HIS:HB2	1:B:296:VAL:CG1	2.28	0.62
1:D:2:LYS:HE2	1:D:25:ASP:O	1.99	0.62
1:C:142:ASN:ND2	2:C:604:PO4:O4	2.29	0.62
1:C:273:LEU:HD13	1:C:275:GLU:O	2.00	0.61
1:C:245:LEU:HD11	1:C:333:LEU:HD12	1.83	0.61
1:C:83:ILE:O	1:C:83:ILE:HD12	2.01	0.61
4:A:610:HOH:O	1:D:249:LYS:HE2	2.01	0.61
1:D:192:HIS:CE1	1:D:208:ALA:HB2	2.36	0.60
1:D:238:PHE:CB	1:D:246:LEU:HD11	2.32	0.60
1:C:146:LEU:O	1:C:150:LEU:HB2	2.02	0.60
1:B:186:VAL:HG22	4:B:624:HOH:O	2.02	0.59
1:A:333:LEU:C	1:A:334:LYS:HD2	2.22	0.59
1:D:27:MET:HE1	1:D:310:ILE:CD1	2.31	0.59
1:B:212:PRO:O	1:C:212:PRO:HG2	2.03	0.59
1:B:3:VAL:HG21	1:B:316:LEU:HD21	1.85	0.59
1:D:217:HIS:HB2	1:D:296:VAL:CG1	2.33	0.59
1:A:324:LYS:HB3	1:A:324:LYS:NZ	2.17	0.58
1:C:245:LEU:HD12	1:C:275:GLU:HG3	1.84	0.58
1:D:27:MET:HE1	1:D:310:ILE:HD13	1.85	0.58
1:C:167:ARG:HG3	1:C:217:HIS:CE1	2.38	0.58
1:D:290:LEU:HD22	1:D:291:PHE:N	2.19	0.58
1:B:77:LEU:CD1	1:B:98:LEU:HD12	2.34	0.58
1:D:13:ILE:HD11	3:D:504:NAD:C3N	2.33	0.58
1:C:192:HIS:HE1	2:C:604:PO4:O4	1.87	0.58
1:D:59:ILE:HG22	1:D:63:GLU:OE2	2.04	0.58
1:B:271:ASN:O	1:B:271:ASN:ND2	2.37	0.57
1:B:137:ARG:HG3	1:B:137:ARG:O	2.04	0.57
1:D:18:ALA:O	1:D:21:VAL:HG13	2.05	0.57
1:D:131:LEU:HA	1:D:312:ALA:O	2.05	0.57
1:B:217:HIS:HB2	1:B:296:VAL:HG13	1.87	0.57
1:D:195:ASP:CG	4:D:681:HOH:O	2.42	0.57

Continued on next page...

Continued from previous page...

Atom-1	Atom-2	Interatomic distance (Å)	Clash overlap (Å)
1:A:333:LEU:C	1:A:334:LYS:CD	2.73	0.57
1:C:11:GLY:O	1:C:15:LYS:HG2	2.04	0.57
1:C:58:PHE:C	1:C:60:PRO:HD2	2.26	0.56
1:C:107:ILE:HD11	1:C:313:MET:HE2	1.88	0.56
1:C:51:VAL:O	1:C:69:VAL:HG23	2.05	0.55
1:B:20:ALA:HB2	1:B:303:ILE:HD13	1.87	0.55
1:A:271:ASN:ND2	1:A:271:ASN:O	2.38	0.55
1:A:30:ILE:O	1:A:50:PRO:CG	2.55	0.55
1:C:190:SER:OG	1:C:192:HIS:CD2	2.54	0.55
1:D:188:VAL:HA	1:D:189:PRO:C	2.27	0.54
1:A:272:ASN:HA	1:A:297:HIS:CE1	2.43	0.54
1:B:235:ILE:O	1:B:239:GLU:HG3	2.07	0.54
1:C:107:ILE:HD11	1:C:313:MET:CE	2.38	0.54
1:C:149:THR:HG21	1:C:294:GLN:OE1	2.07	0.54
1:C:141:CYS:HB3	3:C:503:NAD:H5N	1.90	0.54
1:D:120:SER:CB	1:D:137:ARG:CD	2.85	0.54
1:B:167:ARG:HG3	1:B:217:HIS:CE1	2.43	0.54
1:D:56:GLU:OE1	1:D:59:ILE:HG13	2.07	0.53
1:A:192:HIS:HE1	2:A:601:PO4:O3	1.91	0.53
1:C:181:ALA:O	1:C:212:PRO:HD3	2.09	0.53
1:B:105:LYS:HD2	1:B:314:PHE:CZ	2.43	0.53
1:A:142:ASN:OD1	2:A:601:PO4:O3	2.26	0.53
1:C:167:ARG:HD3	1:C:298:GLN:NE2	2.23	0.53
1:D:154:ARG:HE	1:D:201:PRO:HG2	1.72	0.53
1:D:17:VAL:O	1:D:21:VAL:HG12	2.09	0.53
1:B:314:PHE:HB3	1:B:316:LEU:HD13	1.90	0.53
1:B:166:ARG:HB3	1:B:217:HIS:ND1	2.24	0.52
1:D:201:PRO:O	1:D:202:ILE:HG23	2.08	0.52
1:D:271:ASN:O	1:D:271:ASN:ND2	2.39	0.52
1:B:274:TYR:HE1	1:B:303:ILE:HG12	1.75	0.52
1:B:32:ILE:HD12	1:B:32:ILE:C	2.30	0.52
1:C:43:ARG:CZ	1:C:47:LEU:HD21	2.39	0.52
1:C:96:LYS:N	1:C:97:PRO:HD2	2.24	0.52
1:D:91:ILE:HG22	1:D:95:ASN:ND2	2.25	0.52
3:C:503:NAD:O2B	4:C:715:HOH:O	2.19	0.52
1:A:334:LYS:HG2	1:A:334:LYS:OXT	2.10	0.52
1:B:314:PHE:CB	1:B:316:LEU:HD13	2.40	0.51
1:C:45:LYS:HE2	1:C:67:PHE:CZ	2.45	0.51
1:A:286:LYS:HE3	1:D:189:PRO:CD	2.28	0.51
1:B:8:ASN:OD1	3:B:502:NAD:H2A	2.09	0.51
1:C:310:ILE:HA	1:C:313:MET:HE3	1.92	0.51

Continued on next page...

Continued from previous page...

Atom-1	Atom-2	Interatomic distance (Å)	Clash overlap (Å)
1:A:30:ILE:O	1:A:50:PRO:HG2	2.10	0.51
1:C:69:VAL:HG22	1:C:71:GLY:H	1.74	0.51
1:D:98:LEU:HA	1:D:101:LYS:HD2	1.92	0.51
1:A:167:ARG:HD2	1:A:167:ARG:O	2.10	0.51
1:A:327:ASN:HD22	1:A:334:LYS:HZ2	1.56	0.50
1:B:146:LEU:O	1:B:150:LEU:HB2	2.10	0.50
1:B:167:ARG:HD3	1:B:298:GLN:NE2	2.26	0.50
1:C:87:THR:HG22	3:C:503:NAD:C2A	2.42	0.50
4:C:672:HOH:O	1:D:271:ASN:HB3	2.11	0.50
1:C:82:ILE:HD11	1:C:107:ILE:HG13	1.92	0.50
1:B:284:ASN:ND2	1:C:188:VAL:HB	2.25	0.50
1:C:30:ILE:O	1:C:50:PRO:HG2	2.10	0.50
1:C:43:ARG:NH1	1:C:47:LEU:HD21	2.27	0.50
1:D:96:LYS:N	1:D:97:PRO:HD2	2.26	0.50
1:C:196:VAL:CG1	1:C:202:ILE:HD11	2.42	0.50
1:C:59:ILE:N	1:C:60:PRO:CD	2.75	0.50
1:D:11:GLY:O	1:D:15:LYS:HG2	2.11	0.50
1:A:167:ARG:HB2	1:A:213:THR:O	2.11	0.50
1:C:192:HIS:HE1	2:C:604:PO4:P	2.35	0.50
1:C:53:ALA:H	1:C:69:VAL:HG21	1.77	0.50
1:C:238:PHE:HA	1:C:241:THR:HG23	1.93	0.50
1:D:65:GLU:HG3	1:D:66:GLY:H	1.77	0.49
1:C:105:LYS:HD2	1:C:314:PHE:CZ	2.47	0.49
1:B:166:ARG:HB3	1:B:217:HIS:CE1	2.47	0.49
1:B:274:TYR:CE1	1:B:303:ILE:HG12	2.47	0.49
1:D:18:ALA:O	1:D:21:VAL:CG1	2.60	0.49
1:D:51:VAL:HG11	1:D:67:PHE:CE1	2.48	0.49
1:D:118:GLU:OE1	1:D:133:LYS:HB3	2.13	0.49
1:A:158:ASP:HB2	1:A:226:LYS:HB3	1.95	0.48
1:B:242:THR:HA	1:B:334:LYS:OXT	2.12	0.48
1:A:167:ARG:HD2	1:A:167:ARG:C	2.33	0.48
1:B:3:VAL:CG2	1:B:316:LEU:HD21	2.44	0.48
1:A:3:VAL:HG13	1:A:27:MET:HG2	1.95	0.48
1:B:266:LEU:O	1:B:267:HIS:HB2	2.14	0.48
3:A:501:NAD:C5N	4:A:682:HOH:O	2.62	0.47
1:C:33:THR:HA	1:C:52:TYR:O	2.14	0.47
1:D:94:LYS:O	1:D:97:PRO:HD2	2.14	0.47
1:C:266:LEU:O	1:C:267:HIS:HB2	2.14	0.47
1:A:30:ILE:O	1:A:50:PRO:HG3	2.14	0.47
1:C:30:ILE:O	1:C:50:PRO:CG	2.62	0.47
1:D:30:ILE:HG13	1:D:80:VAL:HG12	1.95	0.47

Continued on next page...

Continued from previous page...

Atom-1	Atom-2	Interatomic distance (Å)	Clash overlap (Å)
1:A:178:PRO:HB3	1:C:174:THR:HB	1.96	0.47
1:B:179:ILE:CD1	1:D:168:ALA:HB3	2.45	0.47
1:C:300:SER:O	1:C:303:ILE:HG12	2.14	0.47
1:A:327:ASN:HD22	1:A:334:LYS:HZ3	1.61	0.47
1:C:271:ASN:HB3	4:C:652:HOH:O	2.13	0.47
1:C:82:ILE:HG13	1:C:105:LYS:O	2.15	0.47
1:A:215:LEU:HD13	1:D:180:ASN:HD21	1.79	0.47
1:A:246:LEU:HD22	1:A:246:LEU:N	2.30	0.47
1:A:191:HIS:ND1	1:A:195:ASP:OD1	2.49	0.46
1:A:166:ARG:HA	1:A:217:HIS:ND1	2.30	0.46
1:C:166:ARG:HD2	2:C:604:PO4:O4	2.15	0.46
1:D:6:GLY:O	1:D:83:ILE:HA	2.15	0.46
1:D:30:ILE:O	1:D:50:PRO:HG2	2.15	0.46
1:A:32:ILE:HG23	1:A:49:ILE:HG21	1.96	0.46
1:A:8:ASN:HB2	1:A:83:ILE:HD11	1.96	0.46
1:D:286:LYS:NZ	1:D:286:LYS:HB3	2.30	0.46
1:B:11:GLY:HA3	3:B:502:NAD:O5B	2.15	0.46
1:D:29:LEU:HD23	1:D:49:ILE:HD12	1.97	0.46
1:C:192:HIS:CE1	2:C:604:PO4:O4	2.67	0.46
1:A:148:ARG:HD2	1:A:276:ILE:HG12	1.98	0.46
1:B:59:ILE:N	1:B:60:PRO:HD2	2.30	0.46
1:C:244:VAL:O	1:C:334:LYS:HE3	2.16	0.46
1:A:10:TYR:CD2	1:A:32:ILE:HG13	2.51	0.45
1:D:51:VAL:HG11	1:D:67:PHE:HE1	1.79	0.45
1:A:141:CYS:SG	2:A:601:PO4:O2	2.73	0.45
1:C:19:TYR:O	1:C:22:THR:HB	2.16	0.45
1:C:270:TRP:O	1:C:271:ASN:CG	2.55	0.45
1:C:11:GLY:HA3	3:C:503:NAD:O5B	2.16	0.45
1:B:30:ILE:O	1:B:50:PRO:HG2	2.15	0.45
1:C:56:GLU:HG3	1:C:57:GLU:N	2.31	0.45
1:B:20:ALA:O	1:B:24:GLN:HG2	2.16	0.45
1:C:9:GLY:O	1:C:14:GLY:HA3	2.16	0.45
1:B:96:LYS:HB3	1:B:97:PRO:HD3	1.98	0.45
1:D:272:ASN:HA	1:D:297:HIS:CE1	2.51	0.45
1:D:5:VAL:HG21	1:D:27:MET:CE	2.47	0.45
1:B:83:ILE:HG21	1:B:99:TYR:CD1	2.52	0.45
1:C:313:MET:HB2	1:C:313:MET:HE3	1.91	0.45
1:C:91:ILE:HA	1:C:94:LYS:HZ2	1.82	0.45
1:C:237:ILE:O	1:C:241:THR:CG2	2.65	0.44
1:A:109:GLN:HB3	3:A:501:NAD:H1D	1.98	0.44
1:D:13:ILE:CD1	3:D:504:NAD:C3N	2.95	0.44

Continued on next page...

Continued from previous page...

Atom-1	Atom-2	Interatomic distance (Å)	Clash overlap (Å)
1:C:32:ILE:C	1:C:32:ILE:HD12	2.38	0.44
1:D:273:LEU:CD1	1:D:275:GLU:O	2.65	0.44
1:A:59:ILE:N	1:A:60:PRO:CD	2.80	0.44
1:C:4:LYS:HD3	1:C:30:ILE:HD11	2.00	0.44
1:C:82:ILE:HD11	1:C:313:MET:HE1	2.00	0.44
1:C:142:ASN:HB2	2:C:604:PO4:O2	2.18	0.44
1:A:215:LEU:HD13	1:D:180:ASN:ND2	2.33	0.44
1:B:269:GLU:CD	1:B:269:GLU:H	2.21	0.44
1:D:3:VAL:HG13	1:D:27:MET:HB3	1.97	0.44
1:D:332:ILE:O	1:D:333:LEU:HB2	2.18	0.44
1:A:271:ASN:HB3	4:A:654:HOH:O	2.17	0.44
1:C:272:ASN:HA	1:C:297:HIS:CE1	2.53	0.44
1:C:310:ILE:HA	1:C:313:MET:CE	2.48	0.44
1:C:53:ALA:N	1:C:69:VAL:HG21	2.33	0.44
4:A:742:HOH:O	1:B:271:ASN:HB3	2.18	0.43
1:C:7:VAL:HG12	1:C:32:ILE:HG22	1.99	0.43
1:C:237:ILE:O	1:C:241:THR:HG22	2.19	0.43
1:A:190:SER:OG	1:A:192:HIS:HD2	2.01	0.43
3:A:501:NAD:C2B	4:A:749:HOH:O	2.65	0.43
1:B:167:ARG:NH1	1:B:170:ASP:OD2	2.49	0.43
1:C:242:THR:HA	1:C:334:LYS:O	2.18	0.43
1:D:266:LEU:HB3	1:D:268:ARG:HG2	2.00	0.43
1:D:27:MET:HE1	1:D:310:ILE:HD12	1.99	0.43
1:A:146:LEU:O	1:A:150:LEU:HB2	2.18	0.43
1:C:4:LYS:HE3	1:C:4:LYS:HA	2.00	0.43
1:D:100:GLU:HG2	1:D:135:TYR:OH	2.19	0.43
1:D:65:GLU:HG3	1:D:66:GLY:N	2.33	0.43
1:A:31:GLY:HA2	1:A:50:PRO:HG2	2.01	0.43
1:C:167:ARG:HD3	1:C:298:GLN:CD	2.39	0.43
1:D:333:LEU:O	4:D:691:HOH:O	2.21	0.43
1:D:34:LYS:HD3	1:D:41:ALA:HB2	2.00	0.43
1:B:192:HIS:CE1	2:B:603:PO4:O2	2.55	0.43
1:D:137:ARG:NH1	1:D:198:THR:HG21	2.34	0.43
1:D:24:GLN:HB3	1:D:27:MET:CG	2.49	0.43
3:D:504:NAD:O2B	4:D:696:HOH:O	2.21	0.43
1:A:332:ILE:HG22	1:A:334:LYS:HB3	2.01	0.42
1:C:249:LYS:N	1:C:281:GLU:OE1	2.52	0.42
1:D:59:ILE:CG2	1:D:63:GLU:OE2	2.67	0.42
1:A:31:GLY:CA	1:A:50:PRO:HG2	2.49	0.42
1:B:303:ILE:HD11	1:B:330:LEU:HD13	2.02	0.42
1:A:192:HIS:O	1:A:196:VAL:HG23	2.18	0.42

Continued on next page...

Continued from previous page...

Atom-1	Atom-2	Interatomic distance (Å)	Clash overlap (Å)
1:D:202:ILE:HD12	1:D:202:ILE:C	2.38	0.42
1:D:235:ILE:O	1:D:239:GLU:HG3	2.19	0.42
1:D:327:ASN:HA	1:D:332:ILE:HD12	2.01	0.42
1:D:120:SER:CB	1:D:198:THR:CG2	2.97	0.42
1:B:164:MET:HE2	1:B:164:MET:HA	2.00	0.42
1:B:59:ILE:HD11	1:B:72:THR:HG22	2.01	0.42
1:A:268:ARG:NH2	1:A:275:GLU:OE1	2.52	0.42
1:A:8:ASN:OD1	3:A:501:NAD:H2A	2.18	0.42
1:C:327:ASN:HA	1:C:332:ILE:HB	2.00	0.42
1:B:178:PRO:HB3	1:D:174:THR:HB	2.00	0.42
1:D:59:ILE:N	1:D:60:PRO:CD	2.80	0.42
1:D:141:CYS:SG	2:D:605:PO4:O2	2.75	0.42
1:A:231:LYS:O	1:A:235:ILE:HG23	2.20	0.42
1:D:268:ARG:NH2	1:D:275:GLU:OE1	2.51	0.42
1:C:229:LEU:HD21	1:C:234:VAL:HG22	2.00	0.42
1:C:269:GLU:CD	1:C:269:GLU:H	2.23	0.42
1:A:142:ASN:HD21	1:A:217:HIS:CD2	2.38	0.42
1:A:246:LEU:HD13	1:A:278:VAL:HB	2.01	0.42
1:A:18:ALA:HB1	1:A:29:LEU:HD11	2.01	0.42
1:B:101:LYS:CD	1:B:101:LYS:N	2.83	0.42
1:B:302:VAL:HG22	4:B:702:HOH:O	2.20	0.42
1:B:286:LYS:NZ	1:C:189:PRO:HD3	2.34	0.42
1:D:208:ALA:C	1:D:209:PHE:CD1	2.93	0.42
1:D:59:ILE:O	1:D:63:GLU:HG3	2.19	0.42
1:D:73:LEU:O	1:D:77:LEU:HG	2.20	0.42
1:A:334:LYS:OXT	1:A:334:LYS:CG	2.68	0.41
1:D:8:ASN:OD1	3:D:504:NAD:H2A	2.19	0.41
1:C:82:ILE:HG13	1:C:105:LYS:C	2.41	0.41
1:C:164:MET:SD	1:C:219:HIS:CD2	3.13	0.41
1:A:250:GLU:HG3	4:A:715:HOH:O	2.19	0.41
1:A:33:THR:HA	1:A:52:TYR:O	2.20	0.41
1:C:216:MET:HA	1:C:298:GLN:OE1	2.20	0.41
1:C:52:TYR:HA	1:C:69:VAL:CG2	2.51	0.41
1:D:155:GLU:O	1:D:226:LYS:HD2	2.20	0.41
1:A:270:TRP:O	1:A:271:ASN:CG	2.58	0.41
1:D:270:TRP:O	1:D:271:ASN:CG	2.58	0.41
1:A:11:GLY:O	1:A:15:LYS:HG2	2.21	0.41
1:B:314:PHE:HB3	1:B:316:LEU:CD1	2.51	0.41
3:C:503:NAD:O2B	4:C:714:HOH:O	2.21	0.41
1:A:154:ARG:HD2	1:A:201:PRO:O	2.20	0.41
1:A:327:ASN:CB	1:A:334:LYS:HZ3	2.33	0.41

Continued on next page...

Continued from previous page...

Atom-1	Atom-2	Interatomic distance (Å)	Clash overlap (Å)
1:C:117:ALA:HB1	1:C:135:TYR:O	2.21	0.41
3:D:504:NAD:O2B	4:D:695:HOH:O	2.21	0.41
1:C:217:HIS:CD2	1:C:298:GLN:HB3	2.56	0.41
1:D:171:PRO:HD2	1:D:299:GLU:OE2	2.21	0.41
1:B:82:ILE:HG13	1:B:105:LYS:O	2.21	0.41
1:B:166:ARG:H	1:B:166:ARG:HG3	1.69	0.41
1:B:131:LEU:HA	1:B:312:ALA:O	2.21	0.41
1:C:150:LEU:HD12	1:C:150:LEU:HA	1.84	0.41
1:D:120:SER:HA	1:D:137:ARG:CD	2.50	0.41
1:D:243:ARG:NH1	1:D:308:ASP:OD1	2.46	0.41
1:D:24:GLN:HB3	1:D:27:MET:HG2	2.02	0.41
1:D:217:HIS:HB2	1:D:296:VAL:HG13	2.00	0.41
1:A:271:ASN:HB3	4:A:742:HOH:O	2.20	0.40
1:C:64:LYS:HD3	1:C:64:LYS:C	2.42	0.40
1:A:59:ILE:O	1:A:63:GLU:HG3	2.21	0.40
1:C:249:LYS:H	1:C:281:GLU:CD	2.25	0.40
1:B:298:GLN:O	3:B:502:NAD:H4N	2.21	0.40
1:D:121:PHE:CD1	1:D:121:PHE:C	2.95	0.40
1:B:285:ILE:HD13	1:B:290:LEU:HA	2.03	0.40
1:B:222:MET:HG3	1:B:291:PHE:CE2	2.56	0.40
1:C:141:CYS:HB3	3:C:503:NAD:C5N	2.50	0.40
1:C:191:HIS:C	1:C:191:HIS:ND1	2.75	0.40
1:D:119:VAL:O	1:D:136:VAL:HG13	2.22	0.40

There are no symmetry-related clashes.

5.3 Torsion angles [i](#)

5.3.1 Protein backbone [i](#)

In the following table, the Percentiles column shows the percent Ramachandran outliers of the chain as a percentile score with respect to all X-ray entries followed by that with respect to entries of similar resolution.

The Analysed column shows the number of residues for which the backbone conformation was analysed, and the total number of residues.

Mol	Chain	Analysed	Favoured	Allowed	Outliers	Percentiles	
1	A	332/334 (99%)	318 (96%)	14 (4%)	0	100	100
1	B	331/334 (99%)	319 (96%)	12 (4%)	0	100	100

Continued on next page...

Continued from previous page...

Mol	Chain	Analysed	Favoured	Allowed	Outliers	Percentiles	
1	C	331/334 (99%)	317 (96%)	14 (4%)	0	100	100
1	D	330/334 (99%)	316 (96%)	14 (4%)	0	100	100
All	All	1324/1336 (99%)	1270 (96%)	54 (4%)	0	100	100

There are no Ramachandran outliers to report.

5.3.2 Protein sidechains [i](#)

In the following table, the Percentiles column shows the percent sidechain outliers of the chain as a percentile score with respect to all X-ray entries followed by that with respect to entries of similar resolution.

The Analysed column shows the number of residues for which the sidechain conformation was analysed, and the total number of residues.

Mol	Chain	Analysed	Rotameric	Outliers	Percentiles	
1	A	282/282 (100%)	261 (93%)	21 (7%)	13	9
1	B	281/282 (100%)	268 (95%)	13 (5%)	27	23
1	C	281/282 (100%)	267 (95%)	14 (5%)	24	20
1	D	280/282 (99%)	261 (93%)	19 (7%)	16	11
All	All	1124/1128 (100%)	1057 (94%)	67 (6%)	19	14

All (67) residues with a non-rotameric sidechain are listed below:

Mol	Chain	Res	Type
1	A	1	MET
1	A	2	LYS
1	A	12	THR
1	A	23	LYS
1	A	29	LEU
1	A	32	ILE
1	A	55	SER
1	A	115	ASP
1	A	146	LEU
1	A	150	LEU
1	A	155	GLU
1	A	160	VAL
1	A	167	ARG
1	A	225	LEU

Continued on next page...

Continued from previous page...

Mol	Chain	Res	Type
1	A	226	LYS
1	A	254	ASP
1	A	268	ARG
1	A	271	ASN
1	A	273	LEU
1	A	333	LEU
1	A	334	LYS
1	B	76	LEU
1	B	98	LEU
1	B	146	LEU
1	B	150	LEU
1	B	155	GLU
1	B	166	ARG
1	B	167	ARG
1	B	195	ASP
1	B	271	ASN
1	B	290	LEU
1	B	303	ILE
1	B	316	LEU
1	B	334	LYS
1	C	4	LYS
1	C	45	LYS
1	C	101	LYS
1	C	146	LEU
1	C	150	LEU
1	C	160	VAL
1	C	167	ARG
1	C	191	HIS
1	C	216	MET
1	C	241	THR
1	C	273	LEU
1	C	288	ASN
1	C	316	LEU
1	C	334	LYS
1	D	24	GLN
1	D	34	LYS
1	D	64	LYS
1	D	101	LYS
1	D	137	ARG
1	D	146	LEU
1	D	166	ARG
1	D	167	ARG

Continued on next page...

Continued from previous page...

Mol	Chain	Res	Type
1	D	188	VAL
1	D	195	ASP
1	D	198	THR
1	D	224	GLU
1	D	225	LEU
1	D	254	ASP
1	D	271	ASN
1	D	286	LYS
1	D	290	LEU
1	D	301	ASP
1	D	333	LEU

Some sidechains can be flipped to improve hydrogen bonding and reduce clashes. All (13) such sidechains are listed below:

Mol	Chain	Res	Type
1	A	74	ASN
1	A	142	ASN
1	A	192	HIS
1	A	267	HIS
1	A	284	ASN
1	A	294	GLN
1	A	327	ASN
1	B	192	HIS
1	B	267	HIS
1	B	284	ASN
1	C	74	ASN
1	C	192	HIS
1	D	95	ASN

5.3.3 RNA ⓘ

There are no RNA molecules in this entry.

5.4 Non-standard residues in protein, DNA, RNA chains ⓘ

There are no non-standard protein/DNA/RNA residues in this entry.

5.5 Carbohydrates ⓘ

There are no carbohydrates in this entry.

5.6 Ligand geometry

9 ligands are modelled in this entry.

In the following table, the Counts columns list the number of bonds (or angles) for which Mogul statistics could be retrieved, the number of bonds (or angles) that are observed in the model and the number of bonds (or angles) that are defined in the Chemical Component Dictionary. The Link column lists molecule types, if any, to which the group is linked. The Z score for a bond length (or angle) is the number of standard deviations the observed value is removed from the expected value. A bond length (or angle) with $|Z| > 2$ is considered an outlier worth inspection. RMSZ is the root-mean-square of all Z scores of the bond lengths (or angles).

Mol	Type	Chain	Res	Link	Bond lengths			Bond angles		
					Counts	RMSZ	# Z > 2	Counts	RMSZ	# Z > 2
2	PO4	A	602	-	4,4,4	1.96	3 (75%)	6,6,6	1.22	1 (16%)
3	NAD	D	504	-	42,48,48	2.19	15 (35%)	50,73,73	2.61	16 (32%)
2	PO4	A	601	-	4,4,4	1.98	3 (75%)	6,6,6	1.34	2 (33%)
2	PO4	D	605	-	4,4,4	1.99	3 (75%)	6,6,6	1.27	1 (16%)
3	NAD	A	501	-	42,48,48	1.54	4 (9%)	50,73,73	1.54	6 (12%)
3	NAD	B	502	-	42,48,48	1.52	4 (9%)	50,73,73	1.37	7 (14%)
2	PO4	C	604	-	4,4,4	1.97	3 (75%)	6,6,6	1.22	1 (16%)
2	PO4	B	603	-	4,4,4	1.95	3 (75%)	6,6,6	1.24	1 (16%)
3	NAD	C	503	-	42,48,48	1.46	3 (7%)	50,73,73	2.13	8 (16%)

In the following table, the Chirals column lists the number of chiral outliers, the number of chiral centers analysed, the number of these observed in the model and the number defined in the Chemical Component Dictionary. Similar counts are reported in the Torsion and Rings columns. '-' means no outliers of that kind were identified.

Mol	Type	Chain	Res	Link	Chirals	Torsions	Rings
3	NAD	D	504	-	-	9/26/62/62	0/5/5/5
3	NAD	A	501	-	-	10/26/62/62	0/5/5/5
3	NAD	B	502	-	-	6/26/62/62	0/5/5/5
3	NAD	C	503	-	-	3/26/62/62	0/5/5/5

All (41) bond length outliers are listed below:

Mol	Chain	Res	Type	Atoms	Z	Observed(Å)	Ideal(Å)
3	C	503	NAD	O7N-C7N	6.48	1.36	1.24
3	B	502	NAD	O7N-C7N	6.42	1.36	1.24
3	A	501	NAD	O7N-C7N	6.41	1.36	1.24
3	D	504	NAD	O7N-C7N	6.37	1.36	1.24

Continued on next page...

Continued from previous page...

Mol	Chain	Res	Type	Atoms	Z	Observed(Å)	Ideal(Å)
3	B	502	NAD	C2N-N1N	4.85	1.40	1.35
3	D	504	NAD	C2N-N1N	4.81	1.40	1.35
3	A	501	NAD	C2N-N1N	4.52	1.40	1.35
3	C	503	NAD	C2N-N1N	3.81	1.39	1.35
3	D	504	NAD	C5A-C4A	-3.76	1.31	1.40
3	D	504	NAD	O5B-C5B	-3.47	1.31	1.44
3	D	504	NAD	C2A-N1A	-3.43	1.27	1.33
3	D	504	NAD	PA-O5B	-3.17	1.46	1.59
3	D	504	NAD	PA-O1A	-2.92	1.40	1.50
3	D	504	NAD	O4B-C4B	-2.89	1.38	1.45
3	D	504	NAD	C4A-N3A	-2.86	1.31	1.35
3	D	504	NAD	O4D-C1D	2.86	1.45	1.41
3	D	504	NAD	C6A-C5A	-2.76	1.33	1.43
3	D	504	NAD	C5A-N7A	-2.71	1.29	1.39
3	C	503	NAD	O4B-C1B	2.62	1.44	1.41
3	D	504	NAD	C5B-C4B	-2.52	1.43	1.51
3	B	502	NAD	O4D-C1D	2.50	1.44	1.41
3	A	501	NAD	O4D-C1D	2.48	1.44	1.41
2	D	605	PO4	P-O2	2.32	1.61	1.54
2	A	601	PO4	P-O3	2.30	1.61	1.54
3	D	504	NAD	C6N-N1N	2.28	1.41	1.35
2	A	602	PO4	P-O3	2.28	1.61	1.54
2	D	605	PO4	P-O3	2.27	1.61	1.54
2	C	604	PO4	P-O2	2.27	1.61	1.54
2	A	601	PO4	P-O2	2.27	1.61	1.54
2	A	602	PO4	P-O2	2.27	1.61	1.54
2	C	604	PO4	P-O3	2.26	1.61	1.54
3	D	504	NAD	C3B-C4B	-2.26	1.47	1.53
2	B	603	PO4	P-O2	2.25	1.61	1.54
2	B	603	PO4	P-O3	2.24	1.61	1.54
3	B	502	NAD	C6N-N1N	2.20	1.40	1.35
3	A	501	NAD	C6N-N1N	2.10	1.40	1.35
2	D	605	PO4	P-O4	-2.06	1.48	1.54
2	A	601	PO4	P-O4	-2.05	1.48	1.54
2	C	604	PO4	P-O4	-2.05	1.48	1.54
2	B	603	PO4	P-O4	-2.04	1.48	1.54
2	A	602	PO4	P-O4	-2.01	1.48	1.54

All (43) bond angle outliers are listed below:

Mol	Chain	Res	Type	Atoms	Z	Observed(°)	Ideal(°)
3	D	504	NAD	O4B-C1B-C2B	-11.91	89.52	106.93

Continued on next page...

Continued from previous page...

Mol	Chain	Res	Type	Atoms	Z	Observed(°)	Ideal(°)
3	C	503	NAD	C1B-N9A-C4A	-9.68	109.64	126.64
3	C	503	NAD	N3A-C2A-N1A	-5.91	119.44	128.68
3	A	501	NAD	C1B-N9A-C4A	-5.66	116.69	126.64
3	B	502	NAD	N3A-C2A-N1A	-5.37	120.28	128.68
3	D	504	NAD	PN-O3-PA	-5.05	115.51	132.83
3	A	501	NAD	N3A-C2A-N1A	-4.87	121.07	128.68
3	D	504	NAD	O4B-C4B-C5B	4.71	124.86	109.37
3	D	504	NAD	C4A-C5A-N7A	-4.53	104.67	109.40
3	C	503	NAD	O4D-C4D-C5D	-4.32	95.14	109.37
3	C	503	NAD	C2A-N1A-C6A	4.31	126.12	118.75
3	D	504	NAD	O2A-PA-O5B	-4.15	88.47	107.75
3	A	501	NAD	PN-O3-PA	-3.80	119.79	132.83
3	D	504	NAD	O7N-C7N-C3N	3.36	123.66	119.63
3	C	503	NAD	PN-O3-PA	-3.33	121.42	132.83
3	B	502	NAD	PN-O3-PA	-3.29	121.54	132.83
3	C	503	NAD	C3B-C2B-C1B	-3.14	96.25	100.98
3	B	502	NAD	C1B-N9A-C4A	-3.08	121.23	126.64
3	D	504	NAD	O3B-C3B-C4B	3.02	119.78	111.05
3	D	504	NAD	C3N-C7N-N7N	-3.01	114.14	117.75
3	D	504	NAD	C1B-N9A-C4A	-2.80	121.73	126.64
3	D	504	NAD	O2B-C2B-C1B	2.74	120.98	110.85
3	D	504	NAD	C4N-C3N-C7N	-2.68	113.86	121.04
3	A	501	NAD	C3B-C2B-C1B	-2.50	97.22	100.98
3	D	504	NAD	O2B-C2B-C3B	-2.48	103.81	111.82
3	C	503	NAD	C3N-C2N-N1N	-2.45	118.03	120.43
3	D	504	NAD	C6N-N1N-C2N	-2.45	119.74	121.97
2	A	601	PO4	O4-P-O1	2.35	119.49	110.89
2	B	603	PO4	O4-P-O1	2.27	119.18	110.89
2	D	605	PO4	O4-P-O1	2.25	119.14	110.89
3	B	502	NAD	O7N-C7N-C3N	2.24	122.31	119.63
2	C	604	PO4	O4-P-O1	2.20	118.94	110.89
3	D	504	NAD	N6A-C6A-N1A	2.18	123.10	118.57
2	A	602	PO4	O4-P-O1	2.16	118.82	110.89
3	A	501	NAD	C2A-N1A-C6A	2.14	122.41	118.75
3	D	504	NAD	C2N-C3N-C7N	2.10	125.55	119.46
3	A	501	NAD	C2B-C3B-C4B	2.07	106.67	102.64
3	B	502	NAD	C6N-N1N-C2N	-2.06	120.10	121.97
3	D	504	NAD	C2N-C3N-C4N	2.05	120.59	118.26
3	B	502	NAD	O4B-C4B-C5B	-2.04	102.65	109.37
3	C	503	NAD	O7N-C7N-C3N	2.03	122.07	119.63
3	B	502	NAD	O4B-C4B-C3B	2.03	109.12	105.11
2	A	601	PO4	O3-P-O2	-2.00	101.55	107.97

There are no chirality outliers.

All (28) torsion outliers are listed below:

Mol	Chain	Res	Type	Atoms
3	D	504	NAD	C5B-O5B-PA-O2A
3	D	504	NAD	C5B-O5B-PA-O3
3	D	504	NAD	O4D-C1D-N1N-C2N
3	A	501	NAD	C5B-O5B-PA-O3
3	A	501	NAD	O4D-C1D-N1N-C2N
3	B	502	NAD	O4D-C1D-N1N-C2N
3	B	502	NAD	O4D-C1D-N1N-C6N
3	B	502	NAD	C2D-C1D-N1N-C2N
3	B	502	NAD	C2D-C1D-N1N-C6N
3	C	503	NAD	O4D-C1D-N1N-C2N
3	D	504	NAD	O4B-C4B-C5B-O5B
3	A	501	NAD	O4B-C4B-C5B-O5B
3	D	504	NAD	C3B-C4B-C5B-O5B
3	A	501	NAD	O4D-C4D-C5D-O5D
3	D	504	NAD	O4D-C4D-C5D-O5D
3	A	501	NAD	C3B-C4B-C5B-O5B
3	D	504	NAD	C5B-O5B-PA-O1A
3	A	501	NAD	C5B-O5B-PA-O1A
3	A	501	NAD	C5B-O5B-PA-O2A
3	C	503	NAD	O4D-C4D-C5D-O5D
3	B	502	NAD	O4D-C4D-C5D-O5D
3	D	504	NAD	C3D-C4D-C5D-O5D
3	A	501	NAD	C3D-C4D-C5D-O5D
3	C	503	NAD	O4B-C4B-C5B-O5B
3	A	501	NAD	PN-O3-PA-O2A
3	D	504	NAD	C5D-O5D-PN-O1N
3	A	501	NAD	C5D-O5D-PN-O1N
3	B	502	NAD	O4B-C4B-C5B-O5B

There are no ring outliers.

8 monomers are involved in 38 short contacts:

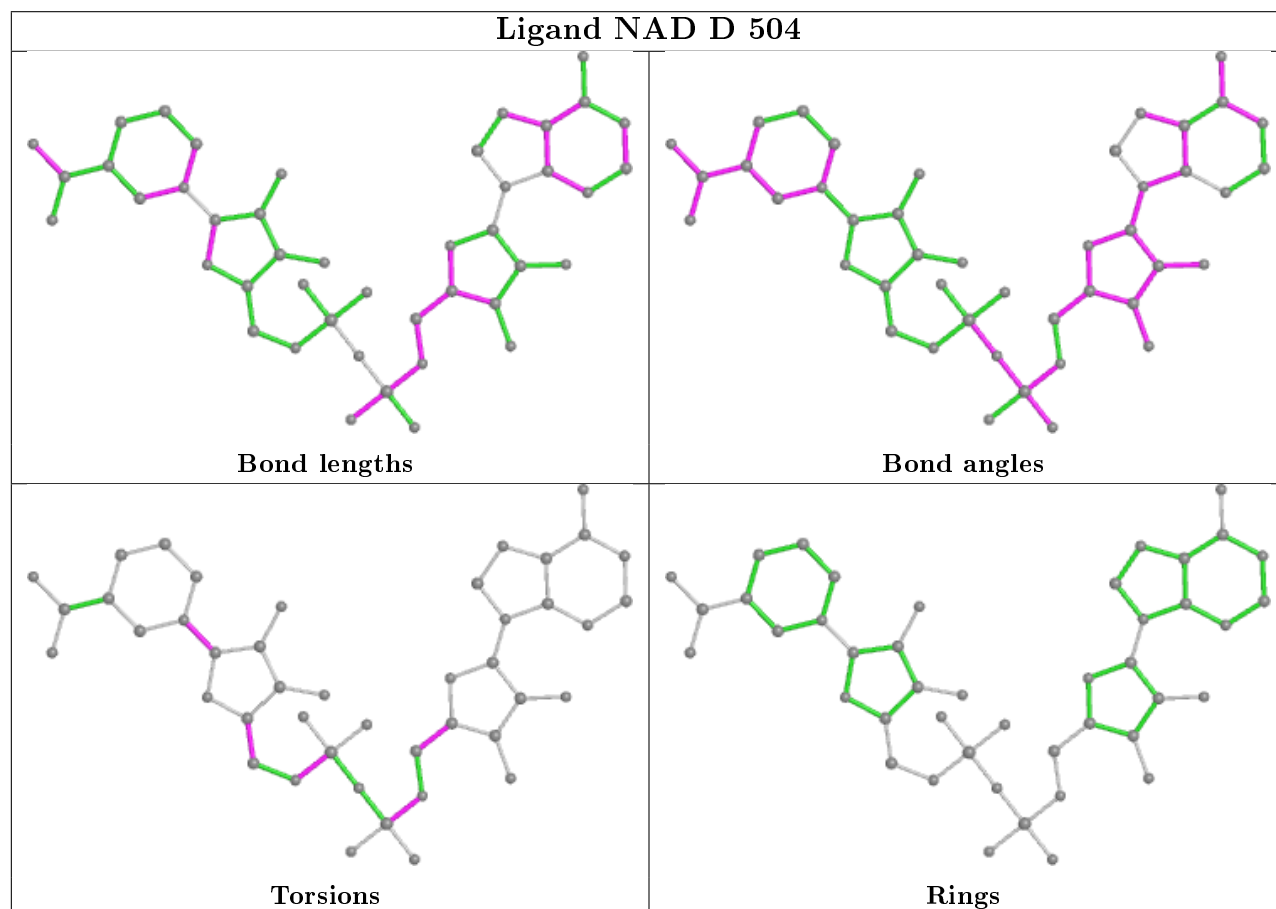
Mol	Chain	Res	Type	Clashes	Symm-Clashes
3	D	504	NAD	5	0
2	A	601	PO4	3	0
2	D	605	PO4	5	0
3	A	501	NAD	6	0
3	B	502	NAD	3	0
2	C	604	PO4	6	0
2	B	603	PO4	4	0

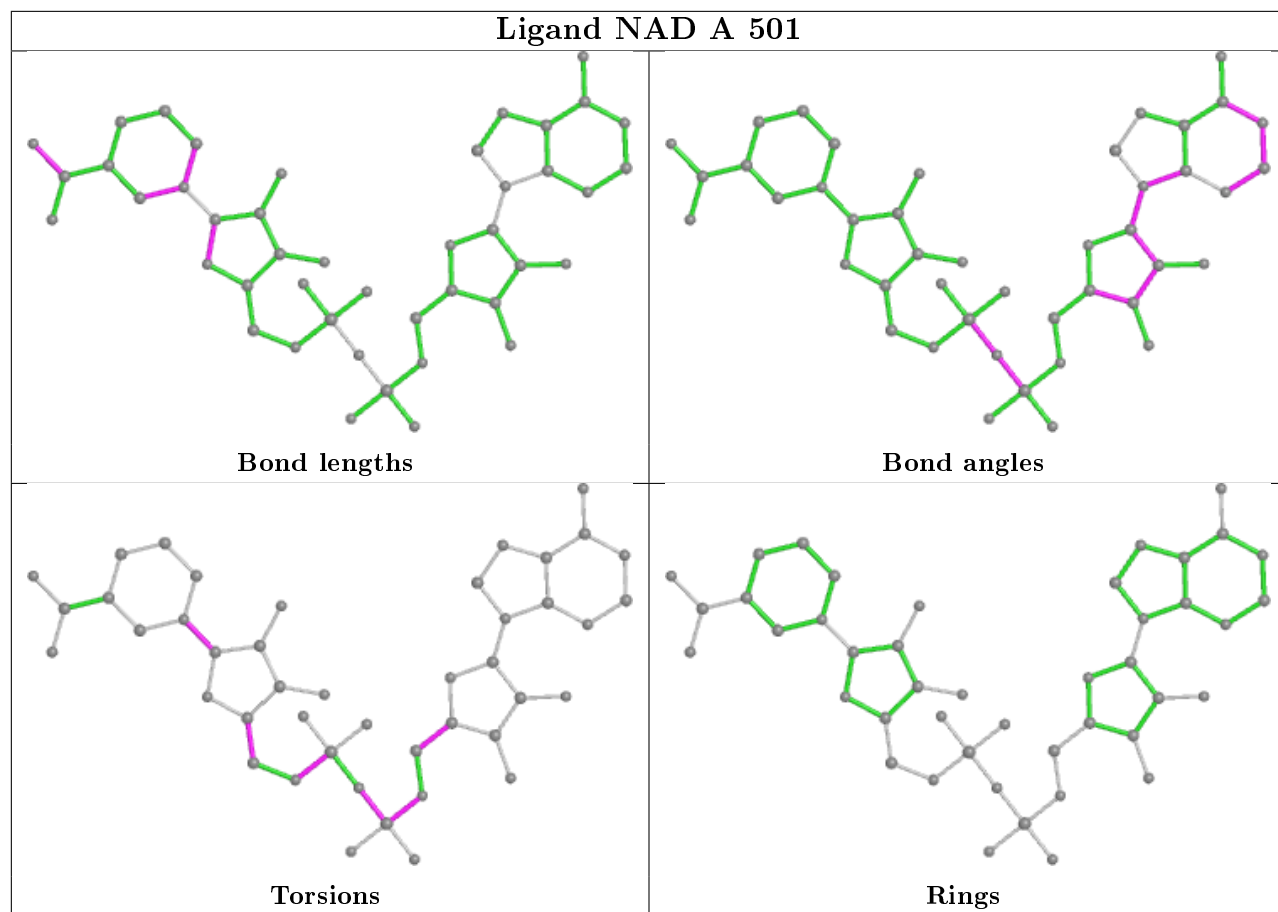
Continued on next page...

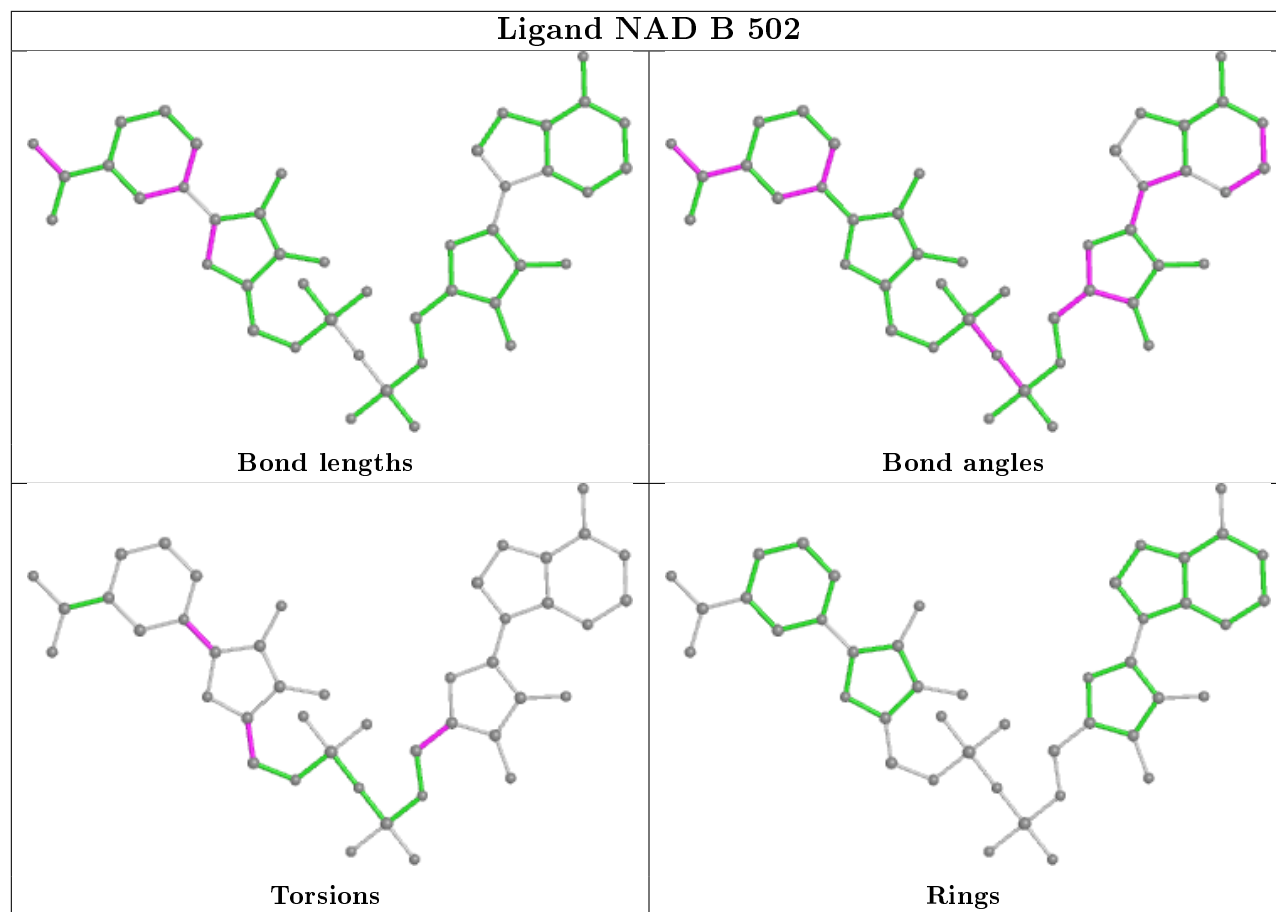
Continued from previous page...

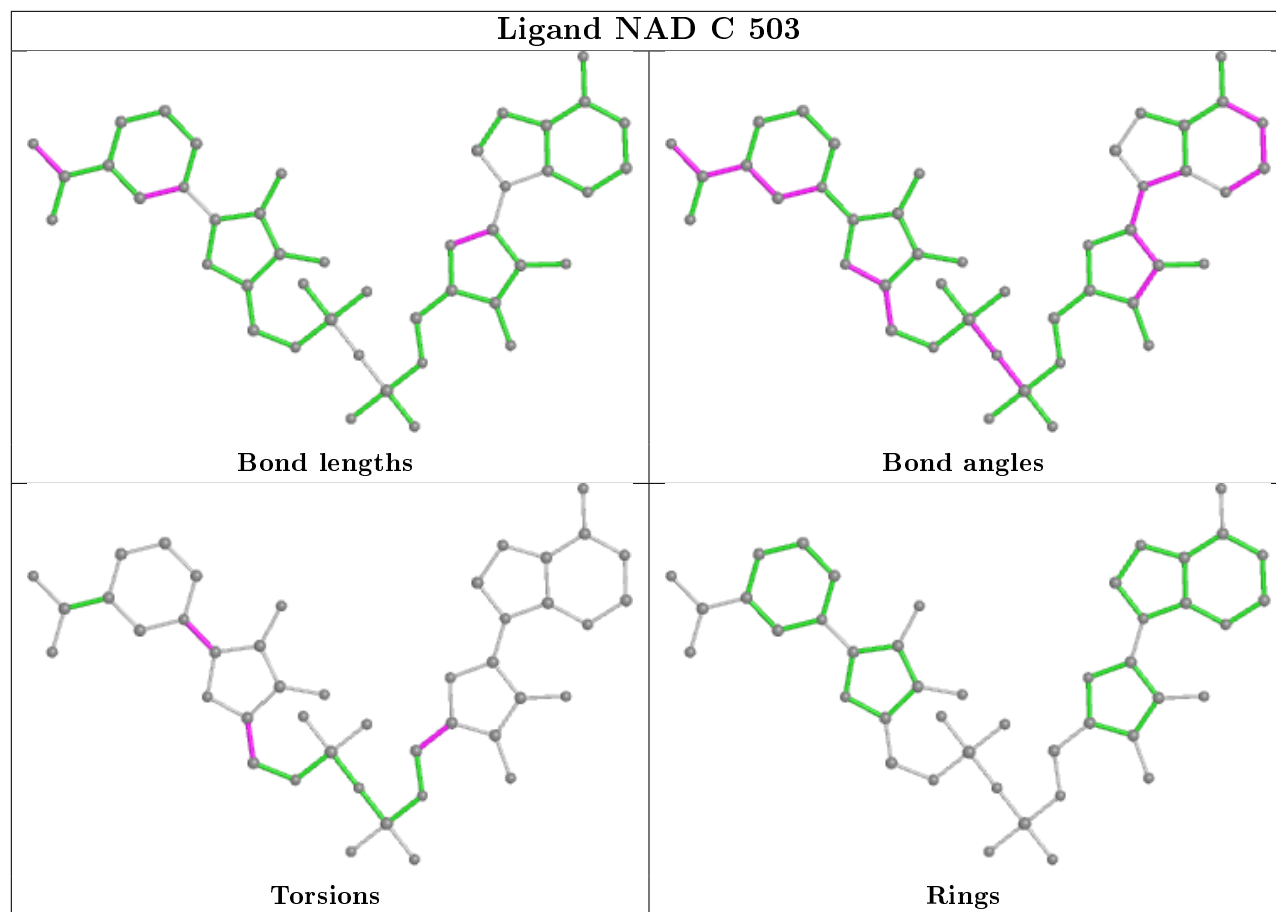
Mol	Chain	Res	Type	Clashes	Symm-Clashes
3	C	503	NAD	6	0

The following is a two-dimensional graphical depiction of Mogul quality analysis of bond lengths, bond angles, torsion angles, and ring geometry for all instances of the Ligand of Interest. In addition, ligands with molecular weight > 250 and outliers as shown on the validation Tables will also be included. For torsion angles, if less than 5% of the Mogul distribution of torsion angles is within 10 degrees of the torsion angle in question, then that torsion angle is considered an outlier. Any bond that is central to one or more torsion angles identified as an outlier by Mogul will be highlighted in the graph. For rings, the root-mean-square deviation (RMSD) between the ring in question and similar rings identified by Mogul is calculated over all ring torsion angles. If the average RMSD is greater than 60 degrees and the minimal RMSD between the ring in question and any Mogul-identified rings is also greater than 60 degrees, then that ring is considered an outlier. The outliers are highlighted in purple. The color gray indicates Mogul did not find sufficient equivalents in the CSD to analyse the geometry.









5.7 Other polymers [i](#)

There are no such residues in this entry.

5.8 Polymer linkage issues [i](#)

There are no chain breaks in this entry.

6 Fit of model and data [i](#)

6.1 Protein, DNA and RNA chains [i](#)

In the following table, the column labelled ‘#RSRZ> 2’ contains the number (and percentage) of RSRZ outliers, followed by percent RSRZ outliers for the chain as percentile scores relative to all X-ray entries and entries of similar resolution. The OWAB column contains the minimum, median, 95th percentile and maximum values of the occupancy-weighted average B-factor per residue. The column labelled ‘Q< 0.9’ lists the number of (and percentage) of residues with an average occupancy less than 0.9.

Mol	Chain	Analysed	<RSRZ>	#RSRZ>2	OWAB(Å ²)	Q<0.9
1	A	334/334 (100%)	-0.16	3 (0%) 84 83	16, 25, 39, 52	0
1	B	333/334 (99%)	-0.02	0 100 100	14, 25, 43, 52	0
1	C	333/334 (99%)	-0.02	2 (0%) 89 88	16, 29, 46, 59	0
1	D	332/334 (99%)	0.02	5 (1%) 73 72	16, 31, 47, 57	0
All	All	1332/1336 (99%)	-0.05	10 (0%) 86 85	14, 28, 44, 59	0

All (10) RSRZ outliers are listed below:

Mol	Chain	Res	Type	RSRZ
1	A	334	LYS	4.3
1	A	333	LEU	3.4
1	D	63	GLU	3.2
1	C	56	GLU	3.0
1	D	333	LEU	3.0
1	C	332	ILE	2.6
1	D	101	LYS	2.4
1	D	189	PRO	2.3
1	A	189	PRO	2.3
1	D	332	ILE	2.1

6.2 Non-standard residues in protein, DNA, RNA chains [i](#)

There are no non-standard protein/DNA/RNA residues in this entry.

6.3 Carbohydrates [i](#)

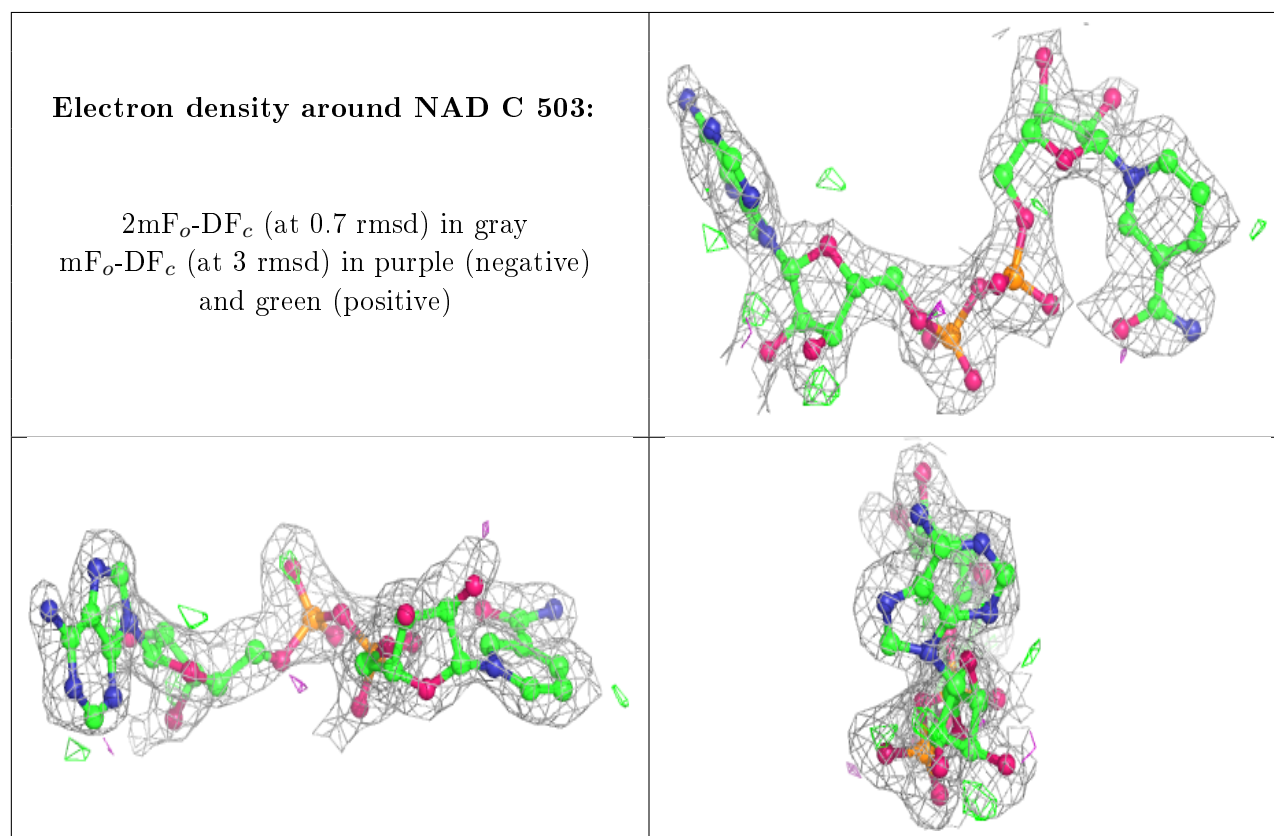
There are no carbohydrates in this entry.

6.4 Ligands ⓘ

In the following table, the Atoms column lists the number of modelled atoms in the group and the number defined in the chemical component dictionary. The B-factors column lists the minimum, median, 95th percentile and maximum values of B factors of atoms in the group. The column labelled 'Q< 0.9' lists the number of atoms with occupancy less than 0.9.

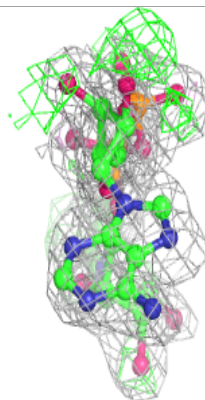
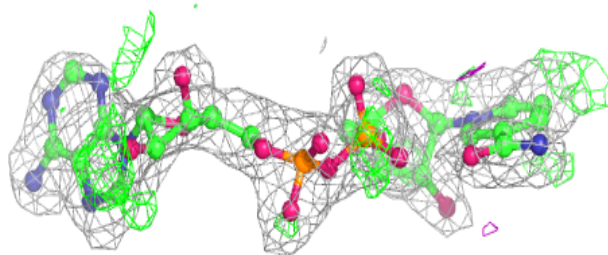
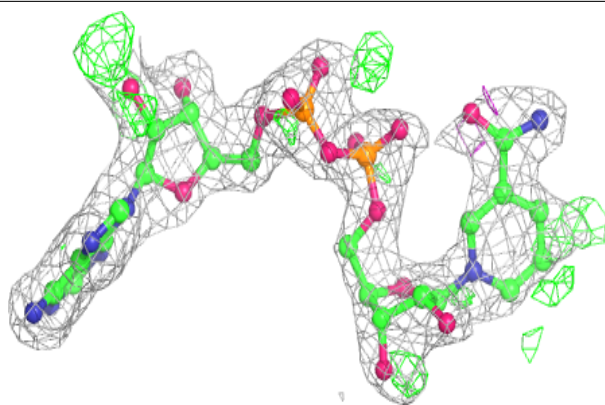
Mol	Type	Chain	Res	Atoms	RSCC	RSR	B-factors(Å ²)	Q<0.9
2	PO4	B	603	5/5	0.54	1.22	49,49,50,56	5
2	PO4	A	602	5/5	0.62	1.31	53,53,54,62	5
2	PO4	D	605	5/5	0.74	1.01	59,60,60,69	5
3	NAD	C	503	44/44	0.85	0.20	30,35,40,42	44
3	NAD	D	504	44/44	0.87	0.18	22,30,33,38	44
2	PO4	A	601	5/5	0.88	1.11	53,54,54,63	5
3	NAD	B	502	44/44	0.88	0.19	23,29,34,39	44
3	NAD	A	501	44/44	0.89	0.20	20,29,37,40	44
2	PO4	C	604	5/5	0.91	0.97	54,54,55,63	5

The following is a graphical depiction of the model fit to experimental electron density of all instances of the Ligand of Interest. In addition, ligands with molecular weight > 250 and outliers as shown on the geometry validation Tables will also be included. Each fit is shown from different orientation to approximate a three-dimensional view.

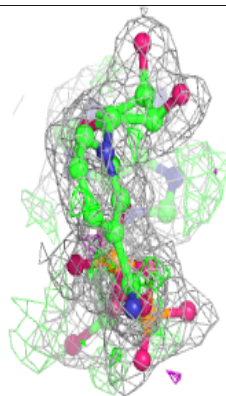
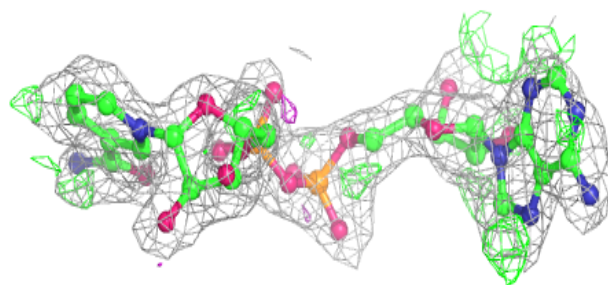
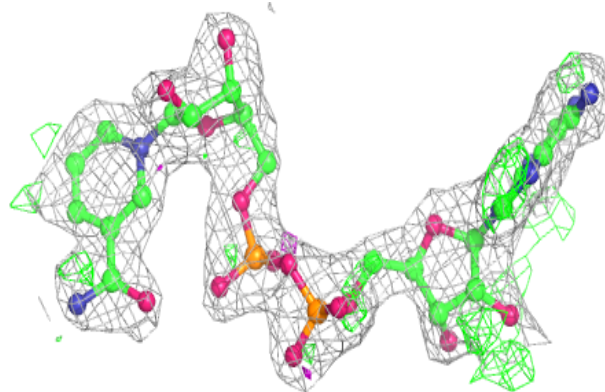


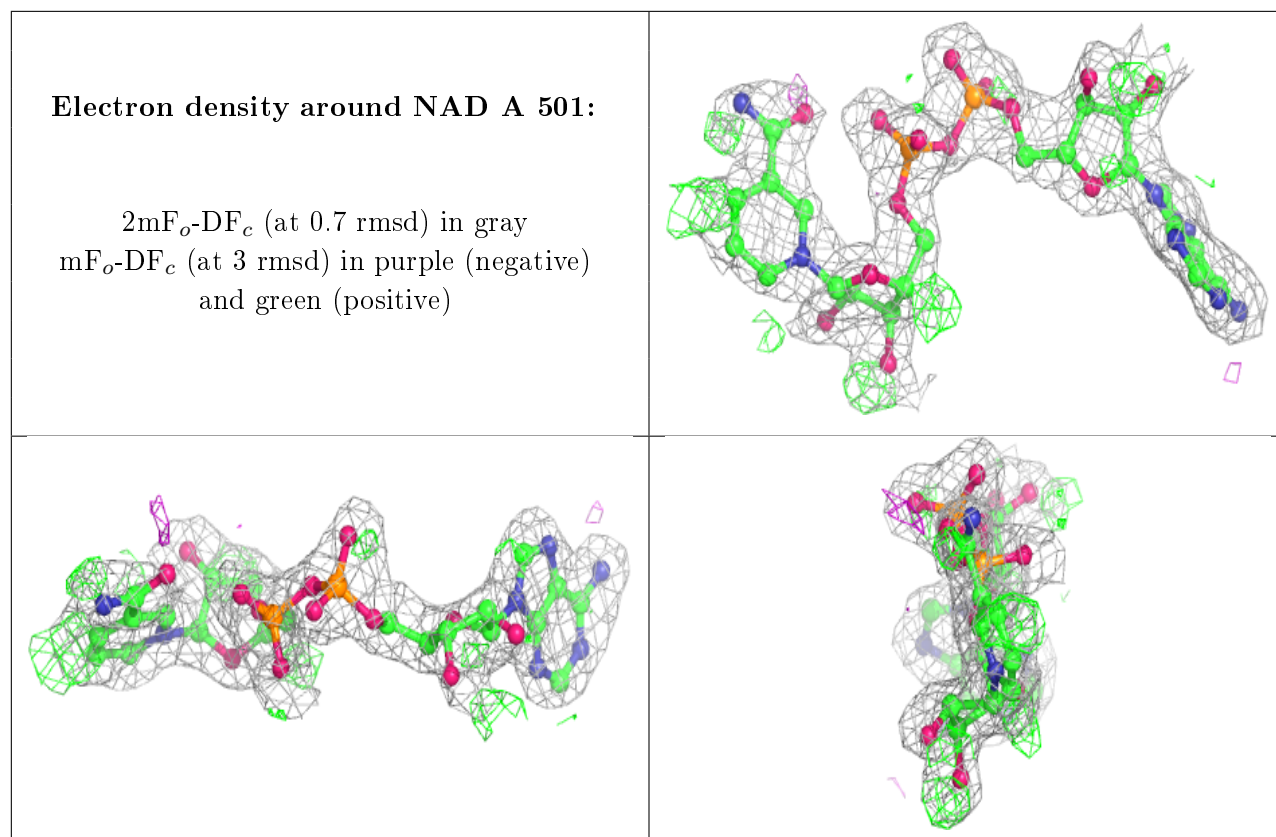
Electron density around NAD D 504:

$2mF_o-DF_c$ (at 0.7 rmsd) in gray
 mF_o-DF_c (at 3 rmsd) in purple (negative)
and green (positive)

**Electron density around NAD B 502:**

$2mF_o-DF_c$ (at 0.7 rmsd) in gray
 mF_o-DF_c (at 3 rmsd) in purple (negative)
and green (positive)





6.5 Other polymers ⓘ

There are no such residues in this entry.