



wwPDB X-ray Structure Validation Summary Report ⓘ

May 24, 2020 – 05:13 am BST

PDB ID : 4CZT
Title : Crystal structure of the kinase domain of CIPK23
Authors : Chaves-Sanjuan, A.; Sanchez-Barrena, M.J.; Albert, A.
Deposited on : 2014-04-22
Resolution : 2.30 Å(reported)

This is a wwPDB X-ray Structure Validation Summary Report for a publicly released PDB entry.

We welcome your comments at validation@mail.wwpdb.org

A user guide is available at

<https://www.wwpdb.org/validation/2017/XrayValidationReportHelp>

with specific help available everywhere you see the ⓘ symbol.

The following versions of software and data (see [references ⓘ](#)) were used in the production of this report:

MolProbity : 4.02b-467
Mogul : 1.8.5 (274361), CSD as541be (2020)
Xtriage (Phenix) : 1.13
EDS : 2.11
buster-report : 1.1.7 (2018)
Percentile statistics : 20191225.v01 (using entries in the PDB archive December 25th 2019)
Refmac : 5.8.0158
CCP4 : 7.0.044 (Gargrove)
Ideal geometry (proteins) : Engh & Huber (2001)
Ideal geometry (DNA, RNA) : Parkinson et al. (1996)
Validation Pipeline (wwPDB-VP) : 2.11

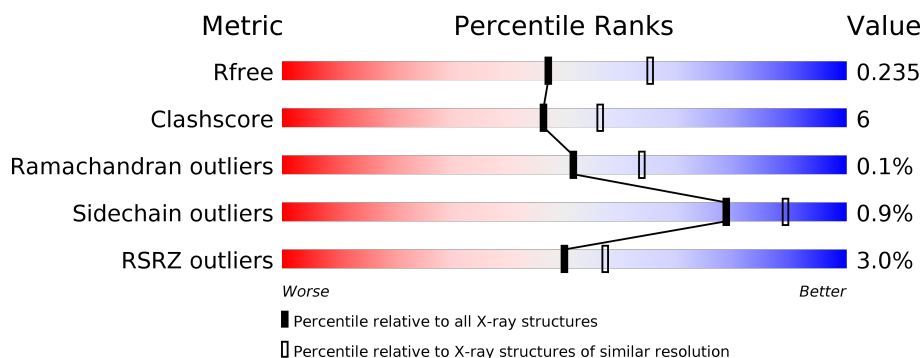
1 Overall quality at a glance

The following experimental techniques were used to determine the structure:

X-RAY DIFFRACTION

The reported resolution of this entry is 2.30 Å.

Percentile scores (ranging between 0-100) for global validation metrics of the entry are shown in the following graphic. The table shows the number of entries on which the scores are based.



Metric	Whole archive (#Entries)	Similar resolution (#Entries, resolution range(Å))
R_{free}	130704	5042 (2.30-2.30)
Clashscore	141614	5643 (2.30-2.30)
Ramachandran outliers	138981	5575 (2.30-2.30)
Sidechain outliers	138945	5575 (2.30-2.30)
RSRZ outliers	127900	4938 (2.30-2.30)

The table below summarises the geometric issues observed across the polymeric chains and their fit to the electron density. The red, orange, yellow and green segments on the lower bar indicate the fraction of residues that contain outliers for ≥ 3 , 2, 1 and 0 types of geometric quality criteria respectively. A grey segment represents the fraction of residues that are not modelled. The numeric value for each fraction is indicated below the corresponding segment, with a dot representing fractions $\leq 5\%$. The upper red bar (where present) indicates the fraction of residues that have poor fit to the electron density. The numeric value is given above the bar.

Mol	Chain	Length	Quality of chain
1	A	464	<div> <div>3%</div> <div> <div></div> <div>53%</div> <div>10%</div> <div>37%</div> </div> </div>
1	B	464	<div> <div>%</div> <div> <div></div> <div>55%</div> <div>6%</div> <div>38%</div> </div> </div>
1	C	464	<div> <div>2%</div> <div> <div></div> <div>55%</div> <div>6%</div> <div>38%</div> </div> </div>
1	D	464	<div> <div>2%</div> <div> <div></div> <div>58%</div> <div>6%</div> <div>35%</div> </div> </div>

The following table lists non-polymeric compounds, carbohydrate monomers and non-standard residues in protein, DNA, RNA chains that are outliers for geometric or electron-density-fit crite-

ria:

Mol	Type	Chain	Res	Chirality	Geometry	Clashes	Electron density
3	SO4	D	1329	-	-	X	-
3	SO4	D	1331	-	-	X	-

2 Entry composition

There are 4 unique types of molecules in this entry. The entry contains 10299 atoms, of which 0 are hydrogens and 0 are deuteriums.

In the tables below, the ZeroOcc column contains the number of atoms modelled with zero occupancy, the AltConf column contains the number of residues with at least one atom in alternate conformation and the Trace column contains the number of residues modelled with at most 2 atoms.

- Molecule 1 is a protein called CBL-INTERACTING SERINE/THREONINE-PROTEIN KINASE 23.

Mol	Chain	Residues	Atoms					ZeroOcc	AltConf	Trace
1	A	294	Total	C	N	O	S	0	0	0
			2333	1497	397	430	9			
1	B	286	Total	C	N	O	S	0	1	0
			2288	1469	392	418	9			
1	C	286	Total	C	N	O	S	0	1	0
			2278	1469	381	419	9			
1	D	302	Total	C	N	O	S	0	1	0
			2412	1549	412	442	9			

There are 24 discrepancies between the modelled and reference sequences:

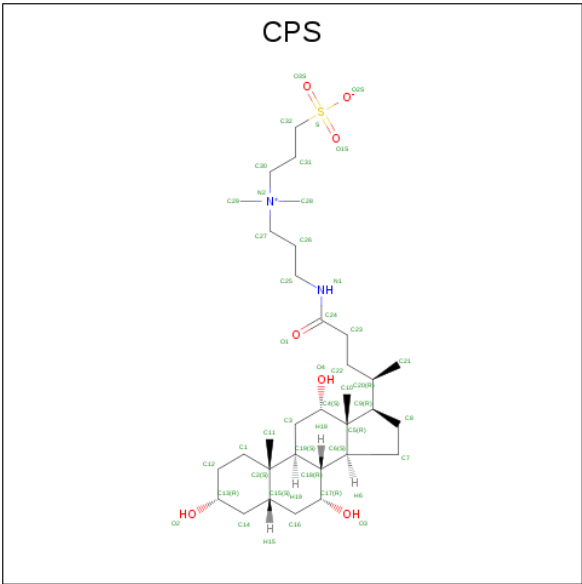
Chain	Residue	Modelled	Actual	Comment	Reference
A	19	PRO	-	expression tag	UNP Q93VD3
A	20	GLY	-	expression tag	UNP Q93VD3
A	21	ILE	-	expression tag	UNP Q93VD3
A	22	HIS	-	expression tag	UNP Q93VD3
A	23	SER	-	expression tag	UNP Q93VD3
A	24	GLY	-	expression tag	UNP Q93VD3
B	19	PRO	-	expression tag	UNP Q93VD3
B	20	GLY	-	expression tag	UNP Q93VD3
B	21	ILE	-	expression tag	UNP Q93VD3
B	22	HIS	-	expression tag	UNP Q93VD3
B	23	SER	-	expression tag	UNP Q93VD3
B	24	GLY	-	expression tag	UNP Q93VD3
C	19	PRO	-	expression tag	UNP Q93VD3
C	20	GLY	-	expression tag	UNP Q93VD3
C	21	ILE	-	expression tag	UNP Q93VD3
C	22	HIS	-	expression tag	UNP Q93VD3
C	23	SER	-	expression tag	UNP Q93VD3
C	24	GLY	-	expression tag	UNP Q93VD3
D	19	PRO	-	expression tag	UNP Q93VD3
D	20	GLY	-	expression tag	UNP Q93VD3

Continued on next page...

Continued from previous page...

Chain	Residue	Modelled	Actual	Comment	Reference
D	21	ILE	-	expression tag	UNP Q93VD3
D	22	HIS	-	expression tag	UNP Q93VD3
D	23	SER	-	expression tag	UNP Q93VD3
D	24	GLY	-	expression tag	UNP Q93VD3

- Molecule 2 is 3-[(3-CHOLAMIDOPROPYL)DIMETHYLAMMONIO]-1-PROPANESULFO NATE (three-letter code: CPS) (formula: C₃₂H₅₈N₂O₇S).



Mol	Chain	Residues	Atoms					ZeroOcc	AltConf
2	A	1	Total	C	N	O	S	0	0
			42	32	2	7	1		
2	B	1	Total	C	N	O	S	0	0
			42	32	2	7	1		
2	C	1	Total	C	N	O	S	0	0
			42	32	2	7	1		
2	C	1	Total	C	N	O	S	0	0
			42	32	2	7	1		
2	D	1	Total	C	N	O	S	0	0
			42	32	2	7	1		
2	D	1	Total	C	N	O	S	0	0
			42	32	2	7	1		
2	D	1	Total	C	N	O	S	0	0
			42	32	2	7	1		

- Molecule 3 is SULFATE ION (three-letter code: SO4) (formula: O₄S).



Mol	Chain	Residues	Atoms			ZeroOcc	AltConf
3	A	1	Total	O	S	0	0
			5	4	1		
3	A	1	Total	O	S	0	0
			5	4	1		
3	A	1	Total	O	S	0	0
			5	4	1		
3	A	1	Total	O	S	0	0
			5	4	1		
3	A	1	Total	O	S	0	0
			5	4	1		
3	B	1	Total	O	S	0	0
			5	4	1		
3	B	1	Total	O	S	0	0
			5	4	1		
3	B	1	Total	O	S	0	0
			5	4	1		
3	C	1	Total	O	S	0	0
			5	4	1		
3	C	1	Total	O	S	0	0
			5	4	1		
3	C	1	Total	O	S	0	0
			5	4	1		
3	C	1	Total	O	S	0	0
			5	4	1		

Continued on next page...

Continued from previous page...

Mol	Chain	Residues	Atoms			ZeroOcc	AltConf
3	D	1	Total	O	S	0	0
			5	4	1		
3	D	1	Total	O	S	0	0
			5	4	1		
3	D	1	Total	O	S	0	0
			5	4	1		
3	D	1	Total	O	S	0	0
			5	4	1		
3	D	1	Total	O	S	0	0
			5	4	1		
3	D	1	Total	O	S	0	0
			5	4	1		

- Molecule 4 is water.

Mol	Chain	Residues	Atoms		ZeroOcc	AltConf
4	A	149	Total	O	0	0
			149	149		
4	B	173	Total	O	0	0
			173	173		
4	C	113	Total	O	0	0
			113	113		
4	D	154	Total	O	0	0
			154	154		

4 Data and refinement statistics

Property	Value	Source
Space group	P 21 21 21	Depositor
Cell constants a, b, c, α , β , γ	72.25Å 91.46Å 207.20Å 90.00° 90.00° 90.00°	Depositor
Resolution (Å)	59.26 – 2.30 59.26 – 2.30	Depositor EDS
% Data completeness (in resolution range)	99.8 (59.26-2.30) 97.0 (59.26-2.30)	Depositor EDS
R_{merge}	0.18	Depositor
R_{sym}	(Not available)	Depositor
$\langle I/\sigma(I) \rangle$ ¹	2.63 (at 2.29Å)	Xtriage
Refinement program	PHENIX (PHENIX.REFINE)	Depositor
R, R_{free}	0.176 , 0.234 0.177 , 0.235	Depositor DCC
R_{free} test set	3133 reflections (5.07%)	wwPDB-VP
Wilson B-factor (Å ²)	30.9	Xtriage
Anisotropy	0.426	Xtriage
Bulk solvent k_{sol} (e/Å ³), B_{sol} (Å ²)	0.35 , 54.8	EDS
L-test for twinning ²	$\langle L \rangle = 0.48$, $\langle L^2 \rangle = 0.32$	Xtriage
Estimated twinning fraction	No twinning to report.	Xtriage
F_o, F_c correlation	0.95	EDS
Total number of atoms	10299	wwPDB-VP
Average B, all atoms (Å ²)	37.0	wwPDB-VP

Xtriage's analysis on translational NCS is as follows: *The largest off-origin peak in the Patterson function is 4.03% of the height of the origin peak. No significant pseudotranslation is detected.*

¹Intensities estimated from amplitudes.

²Theoretical values of $\langle |L| \rangle$, $\langle L^2 \rangle$ for acentric reflections are 0.5, 0.333 respectively for untwinned datasets, and 0.375, 0.2 for perfectly twinned datasets.

5 Model quality [i](#)

5.1 Standard geometry [i](#)

Bond lengths and bond angles in the following residue types are not validated in this section: CPS, SO4

The Z score for a bond length (or angle) is the number of standard deviations the observed value is removed from the expected value. A bond length (or angle) with $|Z| > 5$ is considered an outlier worth inspection. RMSZ is the root-mean-square of all Z scores of the bond lengths (or angles).

Mol	Chain	Bond lengths		Bond angles	
		RMSZ	$\# Z > 5$	RMSZ	$\# Z > 5$
1	A	0.43	0/2380	0.54	0/3205
1	B	0.46	0/2335	0.57	0/3143
1	C	0.44	0/2329	0.58	3/3140 (0.1%)
1	D	0.48	1/2464 (0.0%)	0.56	1/3319 (0.0%)
All	All	0.46	1/9508 (0.0%)	0.56	4/12807 (0.0%)

Chiral center outliers are detected by calculating the chiral volume of a chiral center and verifying if the center is modelled as a planar moiety or with the opposite hand. A planarity outlier is detected by checking planarity of atoms in a peptide group, atoms in a mainchain group or atoms of a sidechain that are expected to be planar.

Mol	Chain	#Chirality outliers	#Planarity outliers
1	C	0	1

All (1) bond length outliers are listed below:

Mol	Chain	Res	Type	Atoms	Z	Observed(Å)	Ideal(Å)
1	D	110	PHE	CB-CG	-5.42	1.42	1.51

All (4) bond angle outliers are listed below:

Mol	Chain	Res	Type	Atoms	Z	Observed(°)	Ideal(°)
1	D	110	PHE	CB-CG-CD1	-6.05	116.57	120.80
1	C	299	ASP	CB-CG-OD1	5.29	123.06	118.30
1	C	302	LEU	CA-CB-CG	5.22	127.30	115.30
1	C	302	LEU	N-CA-C	5.18	124.98	111.00

There are no chirality outliers.

All (1) planarity outliers are listed below:

Mol	Chain	Res	Type	Group
1	C	300	VAL	Peptide

5.2 Too-close contacts ⓘ

In the following table, the Non-H and H(model) columns list the number of non-hydrogen atoms and hydrogen atoms in the chain respectively. The H(added) column lists the number of hydrogen atoms added and optimized by MolProbity. The Clashes column lists the number of clashes within the asymmetric unit, whereas Symm-Clashes lists symmetry related clashes.

Mol	Chain	Non-H	H(model)	H(added)	Clashes	Symm-Clashes
1	A	2333	0	2357	35	0
1	B	2288	0	2313	16	0
1	C	2278	0	2303	29	0
1	D	2412	0	2442	32	0
2	A	42	0	58	4	0
2	B	42	0	58	1	0
2	C	84	0	116	7	0
2	D	126	0	174	7	1
3	A	30	0	0	0	0
3	B	15	0	0	0	0
3	C	25	0	0	0	0
3	D	35	0	0	6	0
4	A	149	0	0	9	0
4	B	173	0	0	2	0
4	C	113	0	0	5	1
4	D	154	0	0	4	0
All	All	10299	0	9821	122	1

The all-atom clashscore is defined as the number of clashes found per 1000 atoms (including hydrogen atoms). The all-atom clashscore for this structure is 6.

The worst 5 of 122 close contacts within the same asymmetric unit are listed below, sorted by their clash magnitude.

Atom-1	Atom-2	Interatomic distance (Å)	Clash overlap (Å)
1:D:58:ALA:HB2	1:D:110:PHE:CE1	2.05	0.92
1:B:129:ASP:OD1	1:B:132:ARG:NH1	2.12	0.82
1:B:178:LEU:O	1:B:183[B]:ARG:NH1	2.18	0.77
1:B:311:ASP:OD1	1:B:313:GLY:N	2.19	0.76
1:A:236:ASN:HD21	2:C:1315:CPS:H29	1.52	0.75

All (1) symmetry-related close contacts are listed below. The label for Atom-2 includes the sym-

metry operator and encoded unit-cell translations to be applied.

Atom-1	Atom-2	Interatomic distance (Å)	Clash overlap (Å)
2:D:1326:CPS:O1S	4:C:2074:HOH:O[4_545]	2.10	0.10

5.3 Torsion angles [i](#)

5.3.1 Protein backbone [i](#)

In the following table, the Percentiles column shows the percent Ramachandran outliers of the chain as a percentile score with respect to all X-ray entries followed by that with respect to entries of similar resolution.

The Analysed column shows the number of residues for which the backbone conformation was analysed, and the total number of residues.

Mol	Chain	Analysed	Favoured	Allowed	Outliers	Percentiles	
1	A	290/464 (62%)	280 (97%)	10 (3%)	0	100	100
1	B	283/464 (61%)	272 (96%)	10 (4%)	1 (0%)	34	42
1	C	285/464 (61%)	273 (96%)	12 (4%)	0	100	100
1	D	299/464 (64%)	284 (95%)	15 (5%)	0	100	100
All	All	1157/1856 (62%)	1109 (96%)	47 (4%)	1 (0%)	51	64

All (1) Ramachandran outliers are listed below:

Mol	Chain	Res	Type
1	B	25	ARG

5.3.2 Protein sidechains [i](#)

In the following table, the Percentiles column shows the percent sidechain outliers of the chain as a percentile score with respect to all X-ray entries followed by that with respect to entries of similar resolution.

The Analysed column shows the number of residues for which the sidechain conformation was analysed, and the total number of residues.

Mol	Chain	Analysed	Rotameric	Outliers	Percentiles	
1	A	252/393 (64%)	249 (99%)	3 (1%)	71	84
1	B	246/393 (63%)	242 (98%)	4 (2%)	62	78
1	C	246/393 (63%)	246 (100%)	0	100	100

Continued on next page...

Continued from previous page...

Mol	Chain	Analysed	Rotameric	Outliers	Percentiles	
1	D	261/393 (66%)	258 (99%)	3 (1%)	73	86
All	All	1005/1572 (64%)	995 (99%)	10 (1%)	78	87

5 of 10 residues with a non-rotameric sidechain are listed below:

Mol	Chain	Res	Type
1	B	101	LYS
1	B	129	ASP
1	D	52	GLU
1	B	96	GLU
1	B	261	LYS

Some sidechains can be flipped to improve hydrogen bonding and reduce clashes. All (2) such sidechains are listed below:

Mol	Chain	Res	Type
1	A	140	ASN
1	C	189	HIS

5.3.3 RNA [i](#)

There are no RNA molecules in this entry.

5.4 Non-standard residues in protein, DNA, RNA chains [i](#)

There are no non-standard protein/DNA/RNA residues in this entry.

5.5 Carbohydrates [i](#)

There are no carbohydrates in this entry.

5.6 Ligand geometry [i](#)

28 ligands are modelled in this entry.

In the following table, the Counts columns list the number of bonds (or angles) for which Mogul statistics could be retrieved, the number of bonds (or angles) that are observed in the model and the number of bonds (or angles) that are defined in the Chemical Component Dictionary. The Link column lists molecule types, if any, to which the group is linked. The Z score for a bond length (or angle) is the number of standard deviations the observed value is removed from the

expected value. A bond length (or angle) with $|Z| > 2$ is considered an outlier worth inspection. RMSZ is the root-mean-square of all Z scores of the bond lengths (or angles).

Mol	Type	Chain	Res	Link	Bond lengths			Bond angles		
					Counts	RMSZ	$\# Z > 2$	Counts	RMSZ	$\# Z > 2$
2	CPS	C	1314	-	45,45,45	0.21	0	69,70,70	0.55	1 (1%)
3	SO4	A	1320	-	4,4,4	0.22	0	6,6,6	0.11	0
3	SO4	D	1333	-	4,4,4	0.14	0	6,6,6	0.10	0
2	CPS	D	1325	-	45,45,45	0.20	0	69,70,70	0.54	1 (1%)
3	SO4	B	1317	-	4,4,4	0.22	0	6,6,6	0.17	0
3	SO4	D	1328	-	4,4,4	0.26	0	6,6,6	0.26	0
3	SO4	C	1317	-	4,4,4	0.18	0	6,6,6	0.16	0
3	SO4	C	1319	-	4,4,4	0.15	0	6,6,6	0.07	0
2	CPS	D	1327	-	45,45,45	0.26	0	69,70,70	0.60	1 (1%)
3	SO4	C	1318	-	4,4,4	0.23	0	6,6,6	0.10	0
3	SO4	A	1321	-	4,4,4	0.16	0	6,6,6	0.08	0
2	CPS	C	1315	-	45,45,45	0.37	0	69,70,70	0.91	2 (2%)
3	SO4	A	1318	-	4,4,4	0.18	0	6,6,6	0.10	0
3	SO4	B	1316	-	4,4,4	0.33	0	6,6,6	0.28	0
3	SO4	A	1317	-	4,4,4	0.20	0	6,6,6	0.18	0
2	CPS	A	1316	-	45,45,45	0.28	0	69,70,70	0.86	4 (5%)
3	SO4	C	1320	-	4,4,4	0.17	0	6,6,6	0.13	0
2	CPS	D	1326	-	45,45,45	0.20	0	69,70,70	0.66	2 (2%)
3	SO4	D	1334	-	4,4,4	0.17	0	6,6,6	0.15	0
2	CPS	B	1314	-	45,45,45	0.19	0	69,70,70	0.52	1 (1%)
3	SO4	D	1330	-	4,4,4	0.16	0	6,6,6	0.05	0
3	SO4	A	1319	-	4,4,4	0.19	0	6,6,6	0.14	0
3	SO4	D	1331	-	4,4,4	0.17	0	6,6,6	0.11	0
3	SO4	D	1332	-	4,4,4	0.24	0	6,6,6	0.14	0
3	SO4	B	1315	-	4,4,4	0.18	0	6,6,6	0.08	0
3	SO4	D	1329	-	4,4,4	0.21	0	6,6,6	0.29	0
3	SO4	A	1322	-	4,4,4	0.14	0	6,6,6	0.16	0
3	SO4	C	1316	-	4,4,4	0.17	0	6,6,6	0.18	0

In the following table, the Chirals column lists the number of chiral outliers, the number of chiral centers analysed, the number of these observed in the model and the number defined in the Chemical Component Dictionary. Similar counts are reported in the Torsion and Rings columns. '-' means no outliers of that kind were identified.

Mol	Type	Chain	Res	Link	Chirals	Torsions	Rings
2	CPS	A	1316	-	-	7/25/90/90	1/4/4/4
2	CPS	D	1327	-	-	4/25/90/90	1/4/4/4
2	CPS	D	1326	-	-	10/25/90/90	0/4/4/4

Continued on next page...

Continued from previous page...

Mol	Type	Chain	Res	Link	Chirals	Torsions	Rings
2	CPS	C	1315	-	-	13/25/90/90	1/4/4/4
2	CPS	D	1325	-	-	12/25/90/90	0/4/4/4
2	CPS	C	1314	-	-	10/25/90/90	0/4/4/4
2	CPS	B	1314	-	-	5/25/90/90	0/4/4/4

There are no bond length outliers.

The worst 5 of 12 bond angle outliers are listed below:

Mol	Chain	Res	Type	Atoms	Z	Observed(°)	Ideal(°)
2	A	1316	CPS	C27-C26-C25	4.14	119.03	111.04
2	D	1327	CPS	C27-C26-C25	3.48	117.77	111.04
2	C	1315	CPS	C19-C2-C15	3.25	113.14	108.58
2	D	1325	CPS	C27-C26-C25	3.14	117.10	111.04
2	C	1315	CPS	C27-C26-C25	2.90	116.63	111.04

There are no chirality outliers.

5 of 61 torsion outliers are listed below:

Mol	Chain	Res	Type	Atoms
2	C	1314	CPS	N2-C30-C31-C32
2	C	1314	CPS	C30-C31-C32-S
2	C	1314	CPS	C31-C32-S-O3S
2	D	1325	CPS	C26-C27-N2-C29
2	D	1325	CPS	C26-C27-N2-C30

All (3) ring outliers are listed below:

Mol	Chain	Res	Type	Atoms
2	D	1327	CPS	C1-C12-C13-C14-C15-C2
2	A	1316	CPS	C1-C12-C13-C14-C15-C2
2	C	1315	CPS	C1-C12-C13-C14-C15-C2

10 monomers are involved in 26 short contacts:

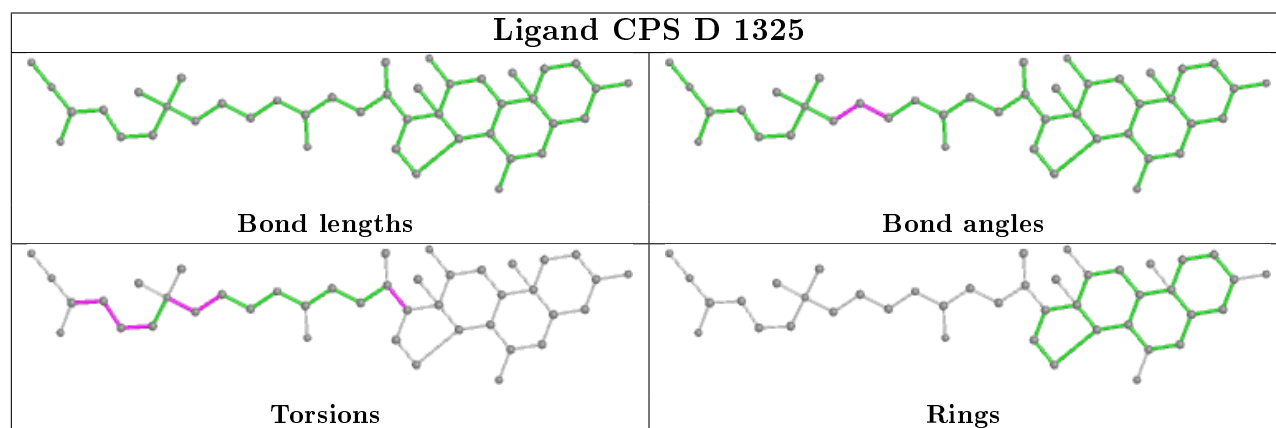
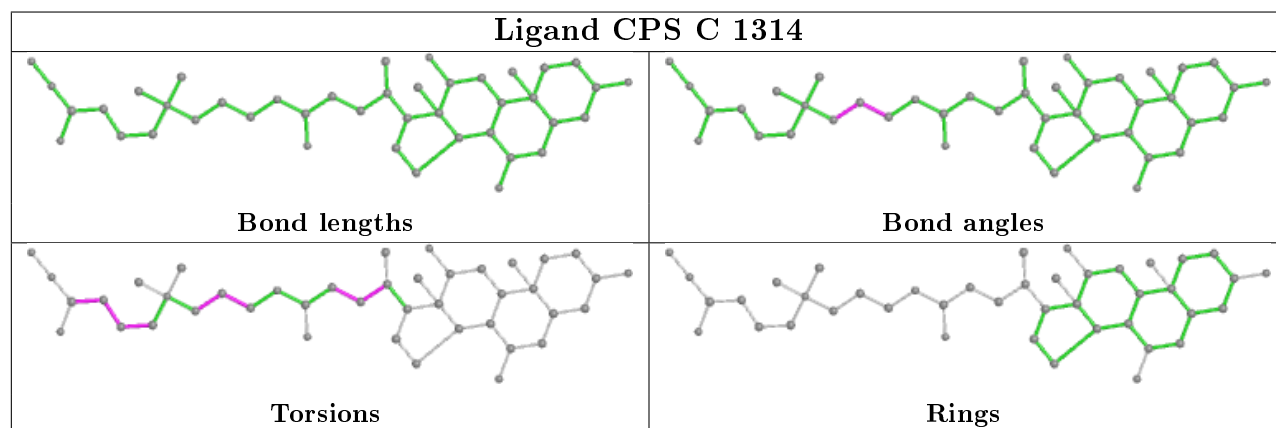
Mol	Chain	Res	Type	Clashes	Symm-Clashes
2	C	1314	CPS	1	0
2	D	1325	CPS	2	0
2	D	1327	CPS	3	0
2	C	1315	CPS	6	0
2	A	1316	CPS	4	0

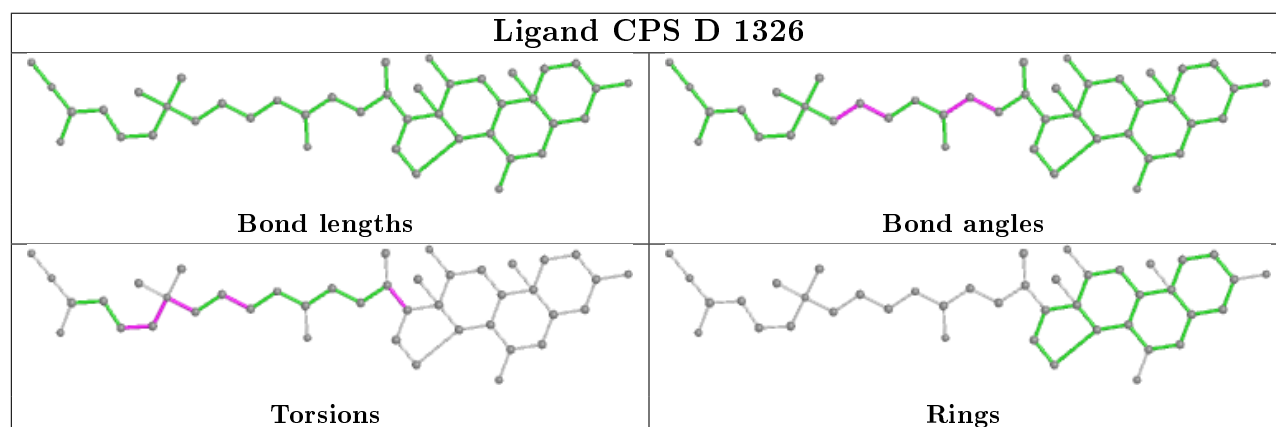
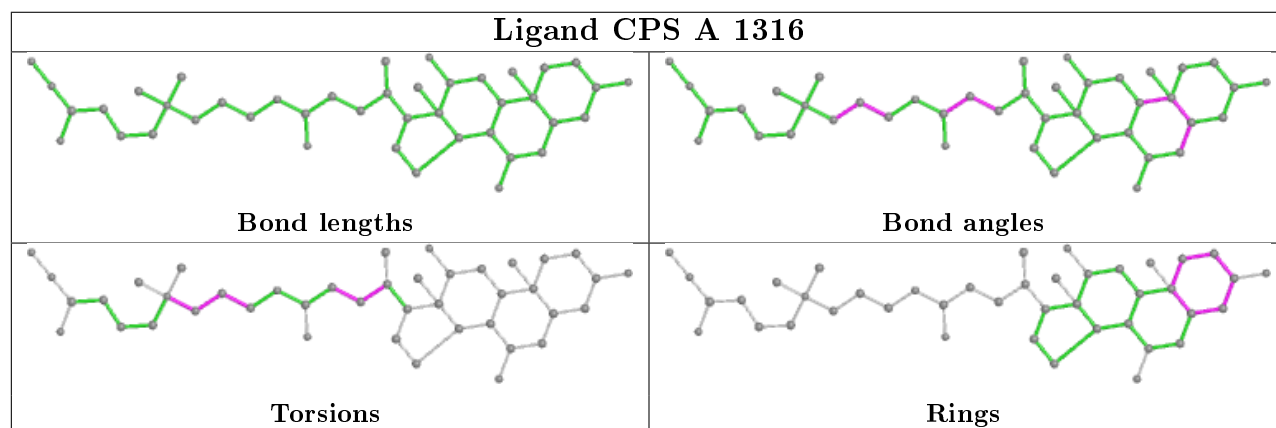
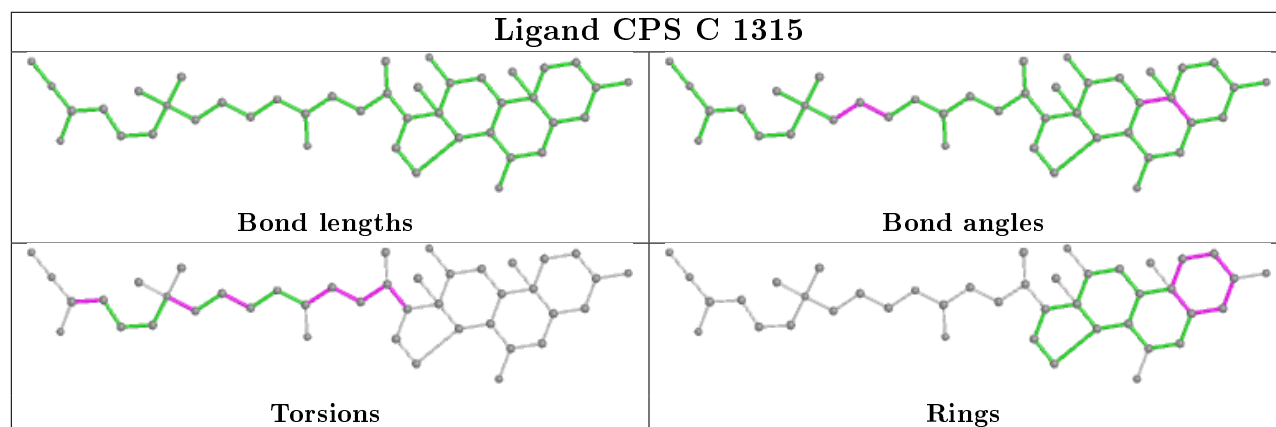
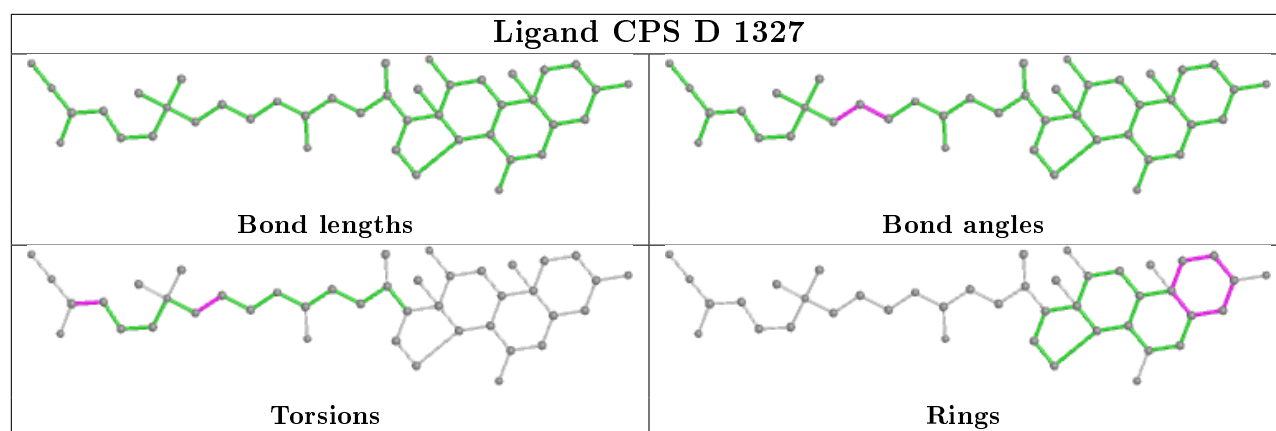
Continued on next page...

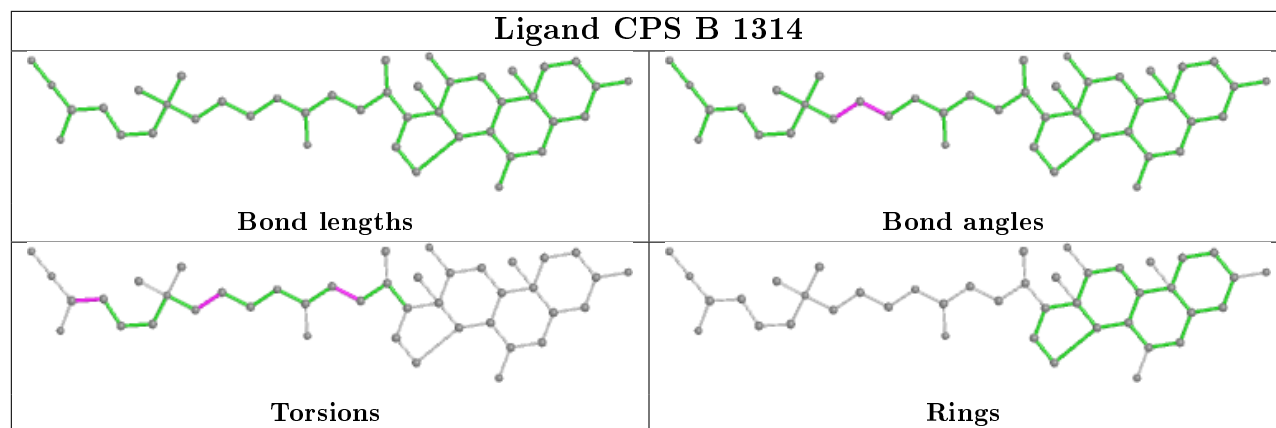
Continued from previous page...

Mol	Chain	Res	Type	Clashes	Symm-Clashes
2	D	1326	CPS	2	1
3	D	1334	SO4	1	0
2	B	1314	CPS	1	0
3	D	1331	SO4	2	0
3	D	1329	SO4	3	0

The following is a two-dimensional graphical depiction of Mogul quality analysis of bond lengths, bond angles, torsion angles, and ring geometry for all instances of the Ligand of Interest. In addition, ligands with molecular weight > 250 and outliers as shown on the validation Tables will also be included. For torsion angles, if less than 5% of the Mogul distribution of torsion angles is within 10 degrees of the torsion angle in question, then that torsion angle is considered an outlier. Any bond that is central to one or more torsion angles identified as an outlier by Mogul will be highlighted in the graph. For rings, the root-mean-square deviation (RMSD) between the ring in question and similar rings identified by Mogul is calculated over all ring torsion angles. If the average RMSD is greater than 60 degrees and the minimal RMSD between the ring in question and any Mogul-identified rings is also greater than 60 degrees, then that ring is considered an outlier. The outliers are highlighted in purple. The color gray indicates Mogul did not find sufficient equivalents in the CSD to analyse the geometry.







5.7 Other polymers [i](#)

There are no such residues in this entry.

5.8 Polymer linkage issues [i](#)

There are no chain breaks in this entry.

6 Fit of model and data [i](#)

6.1 Protein, DNA and RNA chains [i](#)

In the following table, the column labelled ‘#RSRZ> 2’ contains the number (and percentage) of RSRZ outliers, followed by percent RSRZ outliers for the chain as percentile scores relative to all X-ray entries and entries of similar resolution. The OWAB column contains the minimum, median, 95th percentile and maximum values of the occupancy-weighted average B-factor per residue. The column labelled ‘Q< 0.9’ lists the number of (and percentage) of residues with an average occupancy less than 0.9.

Mol	Chain	Analysed	<RSRZ>	#RSRZ>2	OWAB(Å ²)	Q<0.9
1	A	294/464 (63%)	0.01	16 (5%) 25 32	15, 31, 82, 130	0
1	B	286/464 (61%)	-0.14	3 (1%) 82 86	11, 27, 56, 131	0
1	C	286/464 (61%)	-0.03	9 (3%) 49 56	11, 32, 82, 135	0
1	D	302/464 (65%)	-0.09	7 (2%) 60 67	11, 29, 77, 221	0
All	All	1168/1856 (62%)	-0.06	35 (2%) 50 57	11, 30, 77, 221	0

The worst 5 of 35 RSRZ outliers are listed below:

Mol	Chain	Res	Type	RSRZ
1	C	298	ALA	6.1
1	B	22	HIS	6.0
1	C	302	LEU	5.7
1	C	300	VAL	5.3
1	D	295[A]	PHE	5.3

6.2 Non-standard residues in protein, DNA, RNA chains [i](#)

There are no non-standard protein/DNA/RNA residues in this entry.

6.3 Carbohydrates [i](#)

There are no carbohydrates in this entry.

6.4 Ligands [i](#)

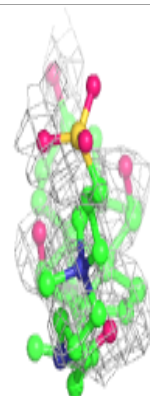
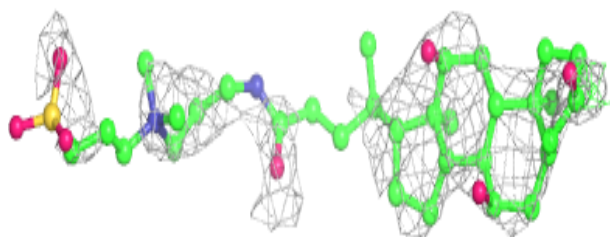
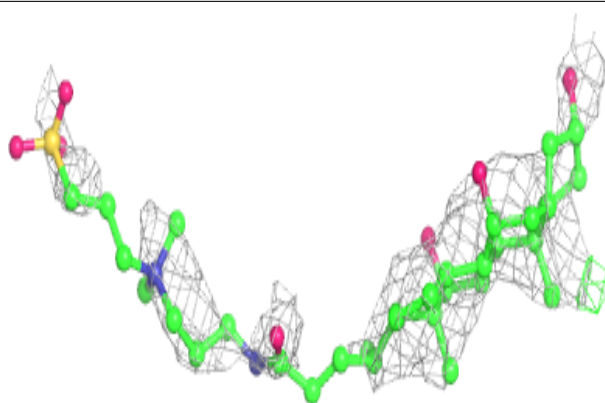
In the following table, the Atoms column lists the number of modelled atoms in the group and the number defined in the chemical component dictionary. The B-factors column lists the minimum, median, 95th percentile and maximum values of B factors of atoms in the group. The column labelled ‘Q< 0.9’ lists the number of atoms with occupancy less than 0.9.

Mol	Type	Chain	Res	Atoms	RSCC	RSR	B-factors(\AA^2)	Q<0.9
2	CPS	A	1316	42/42	0.67	0.32	69,103,187,200	0
3	SO4	D	1334	5/5	0.70	0.20	93,99,106,125	0
3	SO4	C	1320	5/5	0.72	0.15	91,105,114,131	0
2	CPS	D	1325	42/42	0.73	0.34	76,87,202,207	0
3	SO4	C	1318	5/5	0.73	0.17	87,95,115,125	0
3	SO4	B	1316	5/5	0.73	0.23	59,61,93,99	0
2	CPS	C	1315	42/42	0.76	0.31	51,68,119,133	0
3	SO4	C	1319	5/5	0.81	0.14	114,124,129,133	0
2	CPS	D	1327	42/42	0.82	0.23	42,60,113,131	0
3	SO4	D	1333	5/5	0.84	0.12	91,92,113,116	0
3	SO4	D	1332	5/5	0.84	0.25	74,79,93,111	0
3	SO4	A	1321	5/5	0.85	0.23	108,109,119,132	0
3	SO4	D	1331	5/5	0.86	0.15	113,117,128,138	0
2	CPS	D	1326	42/42	0.86	0.20	26,34,66,84	0
2	CPS	C	1314	42/42	0.87	0.20	31,46,97,113	0
3	SO4	B	1317	5/5	0.87	0.14	72,76,79,95	0
3	SO4	A	1318	5/5	0.88	0.30	98,103,116,118	0
3	SO4	A	1320	5/5	0.88	0.14	75,77,92,110	0
3	SO4	A	1322	5/5	0.88	0.18	93,96,116,122	0
3	SO4	B	1315	5/5	0.89	0.23	94,97,118,130	0
2	CPS	B	1314	42/42	0.89	0.19	31,43,123,141	0
3	SO4	A	1319	5/5	0.90	0.20	73,79,85,102	0
3	SO4	D	1330	5/5	0.94	0.36	103,108,121,129	0
3	SO4	D	1328	5/5	0.95	0.15	54,56,60,73	0
3	SO4	C	1316	5/5	0.95	0.13	59,59,70,71	0
3	SO4	C	1317	5/5	0.96	0.15	40,47,61,71	0
3	SO4	D	1329	5/5	0.97	0.20	57,58,59,61	0
3	SO4	A	1317	5/5	0.98	0.11	40,40,46,48	0

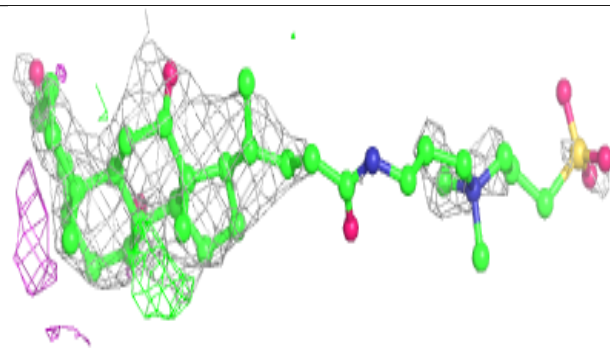
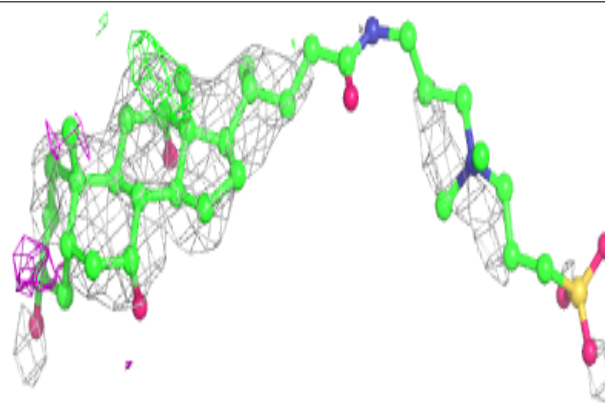
The following is a graphical depiction of the model fit to experimental electron density of all instances of the Ligand of Interest. In addition, ligands with molecular weight > 250 and outliers as shown on the geometry validation Tables will also be included. Each fit is shown from different orientation to approximate a three-dimensional view.

Electron density around CPS A 1316:

$2mF_o-DF_c$ (at 0.7 rmsd) in gray
 mF_o-DF_c (at 3 rmsd) in purple (negative)
and green (positive)

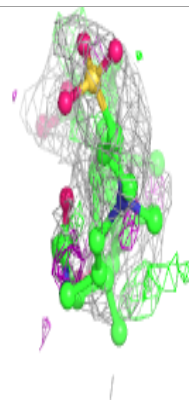
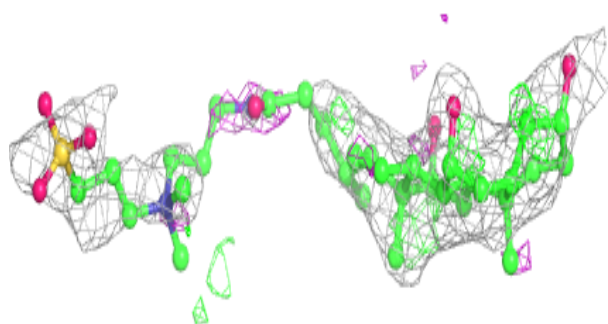
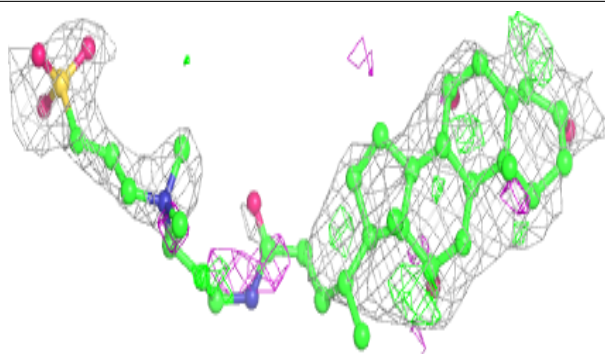
**Electron density around CPS D 1325:**

$2mF_o-DF_c$ (at 0.7 rmsd) in gray
 mF_o-DF_c (at 3 rmsd) in purple (negative)
and green (positive)

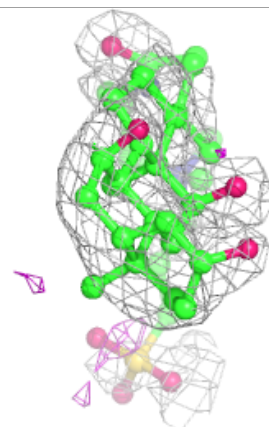
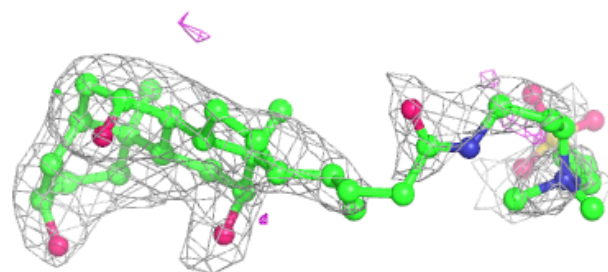
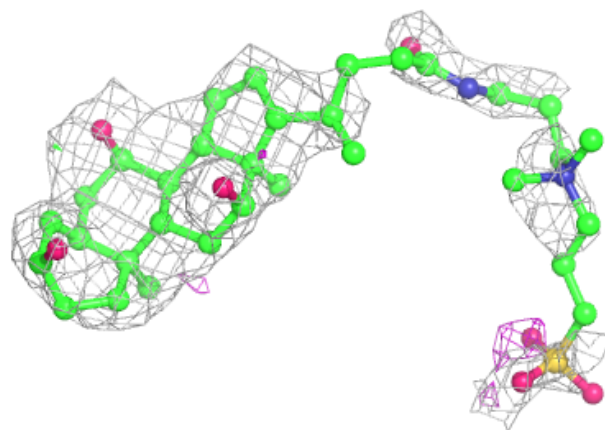


Electron density around CPS C 1315:

$2mF_o-DF_c$ (at 0.7 rmsd) in gray
 mF_o-DF_c (at 3 rmsd) in purple (negative)
and green (positive)

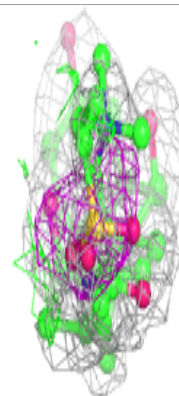
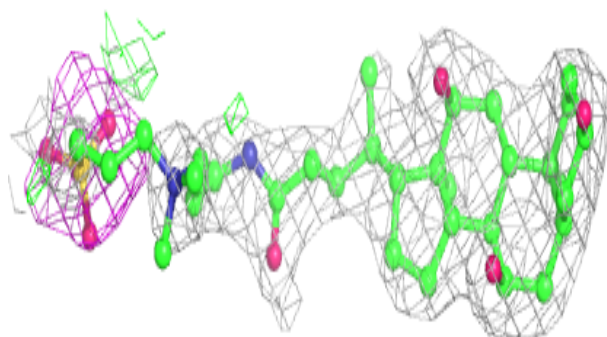
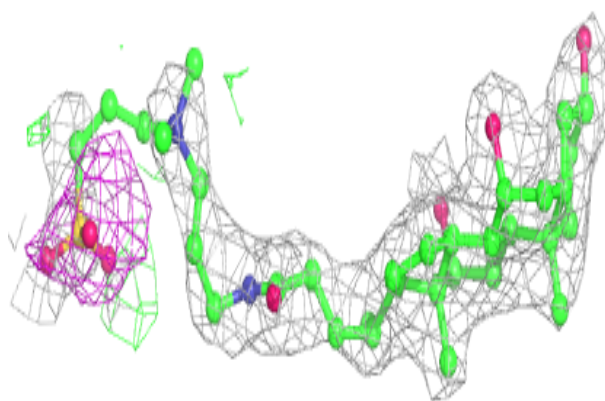
**Electron density around CPS D 1327:**

$2mF_o-DF_c$ (at 0.7 rmsd) in gray
 mF_o-DF_c (at 3 rmsd) in purple (negative)
and green (positive)

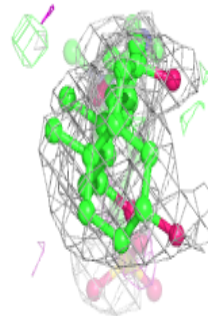
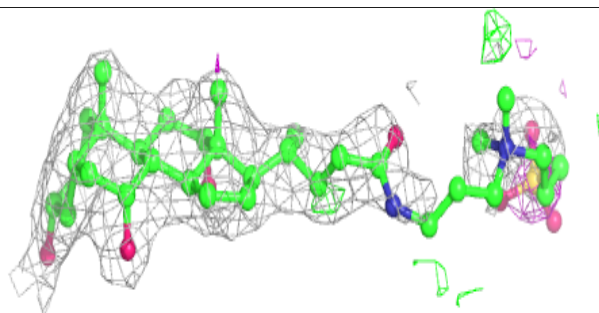
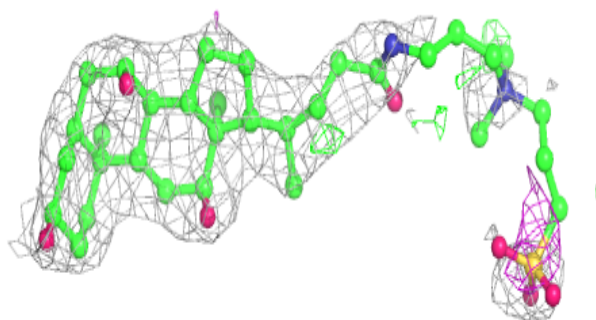


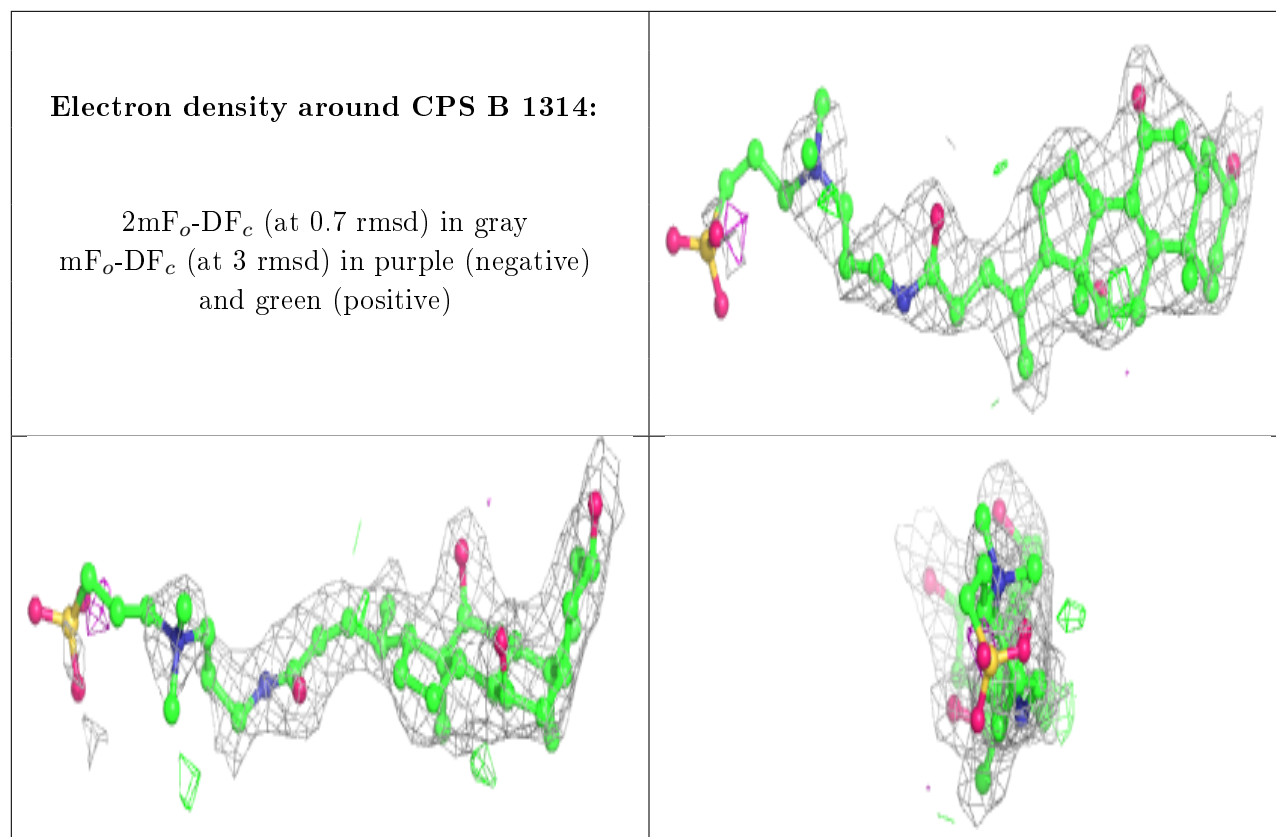
Electron density around CPS D 1326:

$2mF_o-DF_c$ (at 0.7 rmsd) in gray
 mF_o-DF_c (at 3 rmsd) in purple (negative)
and green (positive)

**Electron density around CPS C 1314:**

$2mF_o-DF_c$ (at 0.7 rmsd) in gray
 mF_o-DF_c (at 3 rmsd) in purple (negative)
and green (positive)





6.5 Other polymers [i](#)

There are no such residues in this entry.