



wwPDB EM Validation Summary Report ⓘ

Nov 29, 2022 – 01:45 PM EST

PDB ID : 8D0K
EMDB ID : EMD-27107
Title : Human CST-DNA polymerase alpha/primase preinitiation complex bound to 4xTEL-foldback template - PRIM2C advanced PIC
Authors : He, Q.; Lin, X.; Chavez, B.L.; Agrawal, S.; Lusk, B.L.; Lim, C.
Deposited on : 2022-05-26
Resolution : 4.27 Å(reported)

This is a wwPDB EM Validation Summary Report for a publicly released PDB entry.

We welcome your comments at validation@mail.wwpdb.org

A user guide is available at

<https://www.wwpdb.org/validation/2017/EMValidationReportHelp>
with specific help available everywhere you see the ⓘ symbol.

The types of validation reports are described at

<http://www.wwpdb.org/validation/2017/FAQs#types>.

The following versions of software and data (see [references ⓘ](#)) were used in the production of this report:

EMDB validation analysis : 0.0.1.dev43
MolProbity : 4.02b-467
Percentile statistics : 20191225.v01 (using entries in the PDB archive December 25th 2019)
MapQ : 1.9.9
Ideal geometry (proteins) : Engh & Huber (2001)
Ideal geometry (DNA, RNA) : Parkinson et al. (1996)
Validation Pipeline (wwPDB-VP) : 2.31.2

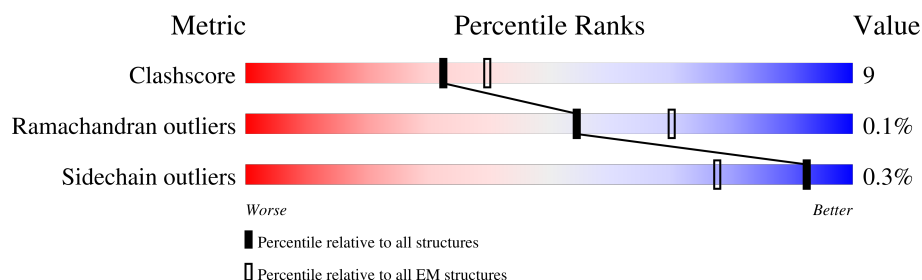
1 Overall quality at a glance

The following experimental techniques were used to determine the structure:

ELECTRON MICROSCOPY

The reported resolution of this entry is 4.27 Å.

Percentile scores (ranging between 0-100) for global validation metrics of the entry are shown in the following graphic. The table shows the number of entries on which the scores are based.



Metric	Whole archive (#Entries)	EM structures (#Entries)
Clashscore	158937	4297
Ramachandran outliers	154571	4023
Sidechain outliers	154315	3826

The table below summarises the geometric issues observed across the polymeric chains and their fit to the map. The red, orange, yellow and green segments of the bar indicate the fraction of residues that contain outliers for ≥ 3 , 2, 1 and 0 types of geometric quality criteria respectively. A grey segment represents the fraction of residues that are not modelled. The numeric value for each fraction is indicated below the corresponding segment, with a dot representing fractions $\leq 5\%$. The upper red bar (where present) indicates the fraction of residues that have poor fit to the EM map (all-atom inclusion $< 40\%$). The numeric value is given above the bar.

Mol	Chain	Length	Quality of chain
1	A	1246	
2	B	374	
3	C	152	
4	D	434	
5	E	523	
6	F	1527	
7	G	612	
8	H	60	

2 Entry composition

There are 8 unique types of molecules in this entry. The entry contains 31011 atoms, of which 0 are hydrogens and 0 are deuteriums.

In the tables below, the AltConf column contains the number of residues with at least one atom in alternate conformation and the Trace column contains the number of residues modelled with at most 2 atoms.

- Molecule 1 is a protein called CST complex subunit CTC1.

Mol	Chain	Residues	Atoms					AltConf	Trace
1	A	1116	Total	C	N	O	S	0	0
			8734	5585	1540	1561	48		

There are 32 discrepancies between the modelled and reference sequences:

Chain	Residue	Modelled	Actual	Comment	Reference
A	-28	MET	-	initiating methionine	UNP Q2NKJ3
A	-27	GLY	-	expression tag	UNP Q2NKJ3
A	-26	ASP	-	expression tag	UNP Q2NKJ3
A	-25	TYR	-	expression tag	UNP Q2NKJ3
A	-24	LYS	-	expression tag	UNP Q2NKJ3
A	-23	ASP	-	expression tag	UNP Q2NKJ3
A	-22	HIS	-	expression tag	UNP Q2NKJ3
A	-21	ASP	-	expression tag	UNP Q2NKJ3
A	-20	GLY	-	expression tag	UNP Q2NKJ3
A	-19	ASP	-	expression tag	UNP Q2NKJ3
A	-18	TYR	-	expression tag	UNP Q2NKJ3
A	-17	LYS	-	expression tag	UNP Q2NKJ3
A	-16	ASP	-	expression tag	UNP Q2NKJ3
A	-15	HIS	-	expression tag	UNP Q2NKJ3
A	-14	ASP	-	expression tag	UNP Q2NKJ3
A	-13	ILE	-	expression tag	UNP Q2NKJ3
A	-12	ASP	-	expression tag	UNP Q2NKJ3
A	-11	TYR	-	expression tag	UNP Q2NKJ3
A	-10	LYS	-	expression tag	UNP Q2NKJ3
A	-9	ASP	-	expression tag	UNP Q2NKJ3
A	-8	ASP	-	expression tag	UNP Q2NKJ3
A	-7	ASP	-	expression tag	UNP Q2NKJ3
A	-6	ASP	-	expression tag	UNP Q2NKJ3
A	-5	LYS	-	expression tag	UNP Q2NKJ3
A	-4	SER	-	expression tag	UNP Q2NKJ3
A	-3	GLY	-	expression tag	UNP Q2NKJ3
A	-2	GLY	-	expression tag	UNP Q2NKJ3
A	-1	SER	-	expression tag	UNP Q2NKJ3

Continued on next page...

Continued from previous page...

Chain	Residue	Modelled	Actual	Comment	Reference
A	0	LEU	-	expression tag	UNP Q2NKJ3
A	1	GLU	-	expression tag	UNP Q2NKJ3
A	820	VAL	ILE	conflict	UNP Q2NKJ3
A	1005	VAL	ILE	conflict	UNP Q2NKJ3

- Molecule 2 is a protein called CST complex subunit STN1.

Mol	Chain	Residues	Atoms					AltConf	Trace
2	B	362	Total	C	N	O	S	0	0
			2923	1852	500	559	12		

There are 7 discrepancies between the modelled and reference sequences:

Chain	Residue	Modelled	Actual	Comment	Reference
B	-5	MET	-	expression tag	UNP Q9H668
B	-4	HIS	-	expression tag	UNP Q9H668
B	-3	HIS	-	expression tag	UNP Q9H668
B	-2	HIS	-	expression tag	UNP Q9H668
B	-1	HIS	-	expression tag	UNP Q9H668
B	0	HIS	-	expression tag	UNP Q9H668
B	1	HIS	-	expression tag	UNP Q9H668

- Molecule 3 is a protein called CST complex subunit TEN1.

Mol	Chain	Residues	Atoms					AltConf	Trace
3	C	121	Total	C	N	O	S	0	0
			954	600	172	176	6		

There are 31 discrepancies between the modelled and reference sequences:

Chain	Residue	Modelled	Actual	Comment	Reference
C	-28	MET	-	expression tag	UNP Q86WV5
C	-27	SER	-	expression tag	UNP Q86WV5
C	-26	TYR	-	expression tag	UNP Q86WV5
C	-25	TYR	-	expression tag	UNP Q86WV5
C	-24	HIS	-	expression tag	UNP Q86WV5
C	-23	HIS	-	expression tag	UNP Q86WV5
C	-22	HIS	-	expression tag	UNP Q86WV5
C	-21	HIS	-	expression tag	UNP Q86WV5
C	-20	HIS	-	expression tag	UNP Q86WV5
C	-19	HIS	-	expression tag	UNP Q86WV5
C	-18	ASP	-	expression tag	UNP Q86WV5

Continued on next page...

Continued from previous page...

Chain	Residue	Modelled	Actual	Comment	Reference
C	-17	TYR	-	expression tag	UNP Q86WV5
C	-16	ASP	-	expression tag	UNP Q86WV5
C	-15	ILE	-	expression tag	UNP Q86WV5
C	-14	PRO	-	expression tag	UNP Q86WV5
C	-13	THR	-	expression tag	UNP Q86WV5
C	-12	THR	-	expression tag	UNP Q86WV5
C	-11	GLU	-	expression tag	UNP Q86WV5
C	-10	ASN	-	expression tag	UNP Q86WV5
C	-9	LEU	-	expression tag	UNP Q86WV5
C	-8	TYR	-	expression tag	UNP Q86WV5
C	-7	PHE	-	expression tag	UNP Q86WV5
C	-6	GLN	-	expression tag	UNP Q86WV5
C	-5	GLY	-	expression tag	UNP Q86WV5
C	-4	ALA	-	expression tag	UNP Q86WV5
C	-3	MET	-	expression tag	UNP Q86WV5
C	-2	GLY	-	expression tag	UNP Q86WV5
C	-1	SER	-	expression tag	UNP Q86WV5
C	0	GLY	-	expression tag	UNP Q86WV5
C	1	ILE	-	expression tag	UNP Q86WV5
C	2	GLN	-	expression tag	UNP Q86WV5

- Molecule 4 is a protein called DNA primase small subunit.

Mol	Chain	Residues	Atoms					AltConf	Trace
4	D	419	Total	C	N	O	S	0	0
			3514	2249	606	645	14		

There are 15 discrepancies between the modelled and reference sequences:

Chain	Residue	Modelled	Actual	Comment	Reference
D	-13	MET	-	initiating methionine	UNP P49642
D	-12	GLY	-	expression tag	UNP P49642
D	-11	HIS	-	expression tag	UNP P49642
D	-10	HIS	-	expression tag	UNP P49642
D	-9	HIS	-	expression tag	UNP P49642
D	-8	HIS	-	expression tag	UNP P49642
D	-7	HIS	-	expression tag	UNP P49642
D	-6	HIS	-	expression tag	UNP P49642
D	-5	GLY	-	expression tag	UNP P49642
D	-4	SER	-	expression tag	UNP P49642
D	-3	GLY	-	expression tag	UNP P49642
D	-2	SER	-	expression tag	UNP P49642

Continued on next page...

Continued from previous page...

Chain	Residue	Modelled	Actual	Comment	Reference
D	-1	GLY	-	expression tag	UNP P49642
D	0	SER	-	expression tag	UNP P49642
D	1	GLY	-	expression tag	UNP P49642

- Molecule 5 is a protein called DNA primase large subunit.

Mol	Chain	Residues	Atoms					AltConf	Trace
5	E	431	Total	C	N	O	S	0	0
			3535	2260	616	646	13		

There are 15 discrepancies between the modelled and reference sequences:

Chain	Residue	Modelled	Actual	Comment	Reference
E	-13	MET	-	initiating methionine	UNP P49643
E	-12	GLY	-	expression tag	UNP P49643
E	-11	HIS	-	expression tag	UNP P49643
E	-10	HIS	-	expression tag	UNP P49643
E	-9	HIS	-	expression tag	UNP P49643
E	-8	HIS	-	expression tag	UNP P49643
E	-7	HIS	-	expression tag	UNP P49643
E	-6	HIS	-	expression tag	UNP P49643
E	-5	GLY	-	expression tag	UNP P49643
E	-4	SER	-	expression tag	UNP P49643
E	-3	GLY	-	expression tag	UNP P49643
E	-2	SER	-	expression tag	UNP P49643
E	-1	GLY	-	expression tag	UNP P49643
E	0	SER	-	expression tag	UNP P49643
E	1	GLY	-	expression tag	UNP P49643

- Molecule 6 is a protein called DNA polymerase alpha catalytic subunit.

Mol	Chain	Residues	Atoms					AltConf	Trace
6	F	915	Total	C	N	O	S	0	0
			7388	4744	1229	1361	54		

There are 66 discrepancies between the modelled and reference sequences:

Chain	Residue	Modelled	Actual	Comment	Reference
F	-63	MET	-	initiating methionine	UNP P09884
F	-62	GLY	-	expression tag	UNP P09884
F	-61	GLY	-	expression tag	UNP P09884
F	-60	SER	-	expression tag	UNP P09884

Continued on next page...

Continued from previous page...

Chain	Residue	Modelled	Actual	Comment	Reference
F	-59	ALA	-	expression tag	UNP P09884
F	-58	GLY	-	expression tag	UNP P09884
F	-57	ASP	-	expression tag	UNP P09884
F	-56	TYR	-	expression tag	UNP P09884
F	-55	LYS	-	expression tag	UNP P09884
F	-54	ASP	-	expression tag	UNP P09884
F	-53	HIS	-	expression tag	UNP P09884
F	-52	ASP	-	expression tag	UNP P09884
F	-51	GLY	-	expression tag	UNP P09884
F	-50	ASP	-	expression tag	UNP P09884
F	-49	TYR	-	expression tag	UNP P09884
F	-48	LYS	-	expression tag	UNP P09884
F	-47	ASP	-	expression tag	UNP P09884
F	-46	HIS	-	expression tag	UNP P09884
F	-45	ASP	-	expression tag	UNP P09884
F	-44	ILE	-	expression tag	UNP P09884
F	-43	ASP	-	expression tag	UNP P09884
F	-42	TYR	-	expression tag	UNP P09884
F	-41	LYS	-	expression tag	UNP P09884
F	-40	ASP	-	expression tag	UNP P09884
F	-39	ASP	-	expression tag	UNP P09884
F	-38	ASP	-	expression tag	UNP P09884
F	-37	ASP	-	expression tag	UNP P09884
F	-36	LYS	-	expression tag	UNP P09884
F	-35	GLY	-	expression tag	UNP P09884
F	-34	ALA	-	expression tag	UNP P09884
F	-33	SER	-	expression tag	UNP P09884
F	-32	SER	-	expression tag	UNP P09884
F	-31	ALA	-	expression tag	UNP P09884
F	-30	TRP	-	expression tag	UNP P09884
F	-29	SER	-	expression tag	UNP P09884
F	-28	HIS	-	expression tag	UNP P09884
F	-27	PRO	-	expression tag	UNP P09884
F	-26	GLN	-	expression tag	UNP P09884
F	-25	PHE	-	expression tag	UNP P09884
F	-24	GLU	-	expression tag	UNP P09884
F	-23	LYS	-	expression tag	UNP P09884
F	-22	GLY	-	expression tag	UNP P09884
F	-21	GLY	-	expression tag	UNP P09884
F	-20	GLY	-	expression tag	UNP P09884
F	-19	SER	-	expression tag	UNP P09884
F	-18	GLY	-	expression tag	UNP P09884

Continued on next page...

Continued from previous page...

Chain	Residue	Modelled	Actual	Comment	Reference
F	-17	GLY	-	expression tag	UNP P09884
F	-16	GLY	-	expression tag	UNP P09884
F	-15	SER	-	expression tag	UNP P09884
F	-14	GLY	-	expression tag	UNP P09884
F	-13	GLY	-	expression tag	UNP P09884
F	-12	SER	-	expression tag	UNP P09884
F	-11	ALA	-	expression tag	UNP P09884
F	-10	TRP	-	expression tag	UNP P09884
F	-9	SER	-	expression tag	UNP P09884
F	-8	HIS	-	expression tag	UNP P09884
F	-7	PRO	-	expression tag	UNP P09884
F	-6	GLN	-	expression tag	UNP P09884
F	-5	PHE	-	expression tag	UNP P09884
F	-4	GLU	-	expression tag	UNP P09884
F	-3	LYS	-	expression tag	UNP P09884
F	-2	GLY	-	expression tag	UNP P09884
F	-1	ALA	-	expression tag	UNP P09884
F	0	GLY	-	expression tag	UNP P09884
F	1	SER	-	expression tag	UNP P09884
F	1463	VAL	-	expression tag	UNP P09884

- Molecule 7 is a protein called DNA polymerase alpha subunit B.

Mol	Chain	Residues	Atoms					AltConf	Trace
7	G	456	Total	C	N	O	S	0	0
			3541	2251	591	684	15		

There are 15 discrepancies between the modelled and reference sequences:

Chain	Residue	Modelled	Actual	Comment	Reference
G	-13	MET	-	initiating methionine	UNP Q14181
G	-12	GLY	-	expression tag	UNP Q14181
G	-11	HIS	-	expression tag	UNP Q14181
G	-10	HIS	-	expression tag	UNP Q14181
G	-9	HIS	-	expression tag	UNP Q14181
G	-8	HIS	-	expression tag	UNP Q14181
G	-7	HIS	-	expression tag	UNP Q14181
G	-6	HIS	-	expression tag	UNP Q14181
G	-5	GLY	-	expression tag	UNP Q14181
G	-4	SER	-	expression tag	UNP Q14181
G	-3	GLY	-	expression tag	UNP Q14181
G	-2	SER	-	expression tag	UNP Q14181

Continued on next page...

Continued from previous page...

Chain	Residue	Modelled	Actual	Comment	Reference
G	-1	GLY	-	expression tag	UNP Q14181
G	0	SER	-	expression tag	UNP Q14181
G	1	GLY	-	expression tag	UNP Q14181

- Molecule 8 is a DNA chain called DNA (5'-D(P*TP*AP*GP*GP*GP*TP*TP*AP*GP*GP*GP*TP*TP*A)-3').

Mol	Chain	Residues	Atoms					AltConf	Trace
8	H	20	Total	C	N	O	P	0	0
			422	200	79	123	20		

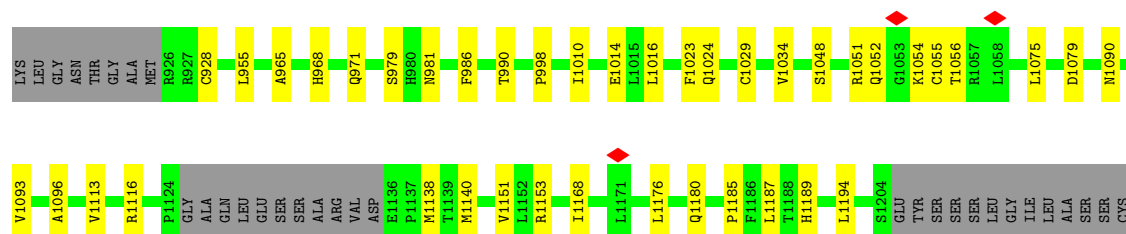
There are 29 discrepancies between the modelled and reference sequences:

Chain	Residue	Modelled	Actual	Comment	Reference
H	-36	DC	-	expression tag	GB 1894914083
H	-35	DT	-	expression tag	GB 1894914083
H	-34	DA	-	expression tag	GB 1894914083
H	-33	DA	-	expression tag	GB 1894914083
H	-32	DC	-	expression tag	GB 1894914083
H	-31	DC	-	expression tag	GB 1894914083
H	-30	DG	-	expression tag	GB 1894914083
H	-29	DC	-	expression tag	GB 1894914083
H	-28	DA	-	expression tag	GB 1894914083
H	-27	DT	-	expression tag	GB 1894914083
H	-26	DC	-	expression tag	GB 1894914083
H	-25	DT	-	expression tag	GB 1894914083
H	-24	DA	-	expression tag	GB 1894914083
H	-23	DG	-	expression tag	GB 1894914083
H	-22	DC	-	expression tag	GB 1894914083
H	-21	DT	-	expression tag	GB 1894914083
H	-20	DT	-	expression tag	GB 1894914083
H	-19	DT	-	expression tag	GB 1894914083
H	-18	DT	-	expression tag	GB 1894914083
H	-17	DT	-	expression tag	GB 1894914083
H	-16	DG	-	expression tag	GB 1894914083
H	-15	DC	-	expression tag	GB 1894914083
H	-14	DT	-	expression tag	GB 1894914083
H	-13	DA	-	expression tag	GB 1894914083
H	-12	DG	-	expression tag	GB 1894914083
H	-11	DA	-	expression tag	GB 1894914083
H	-10	DT	-	expression tag	GB 1894914083
H	-9	DG	-	expression tag	GB 1894914083

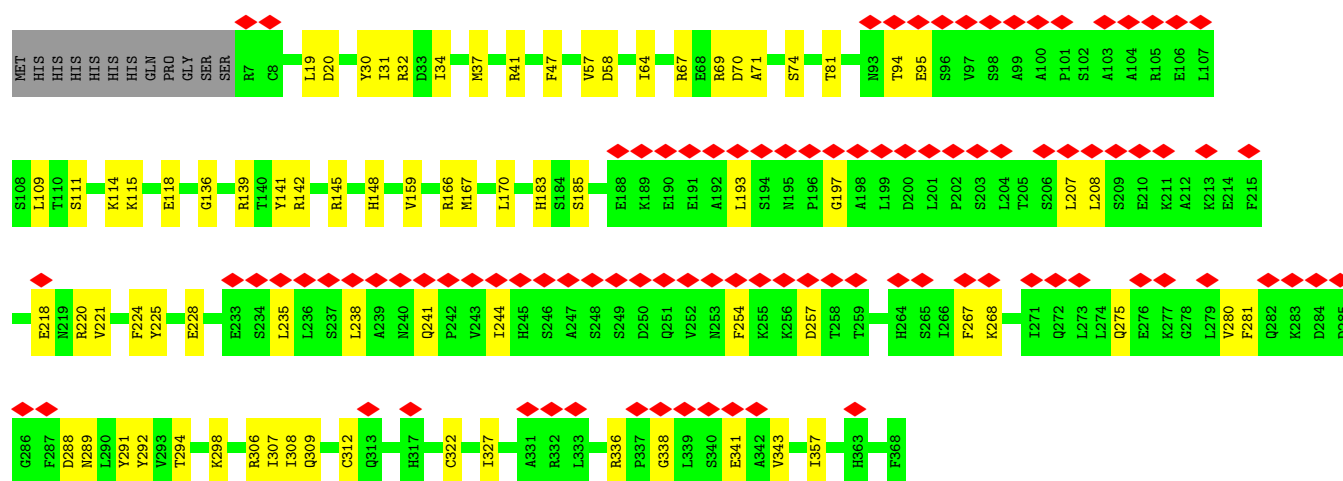
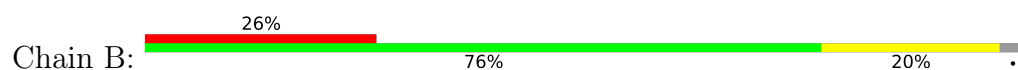
Continued on next page...

Continued from previous page...

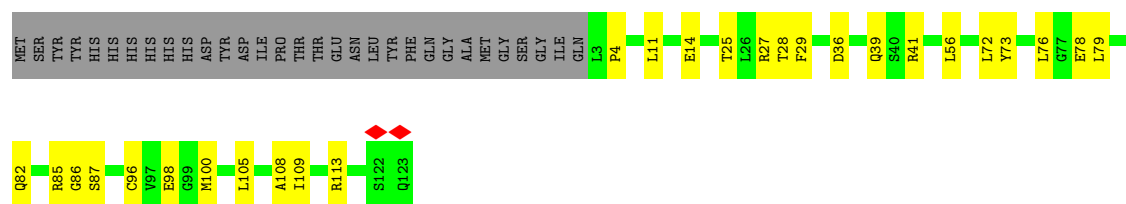
Chain	Residue	Modelled	Actual	Comment	Reference
H	-8	DC	-	expression tag	GB 1894914083



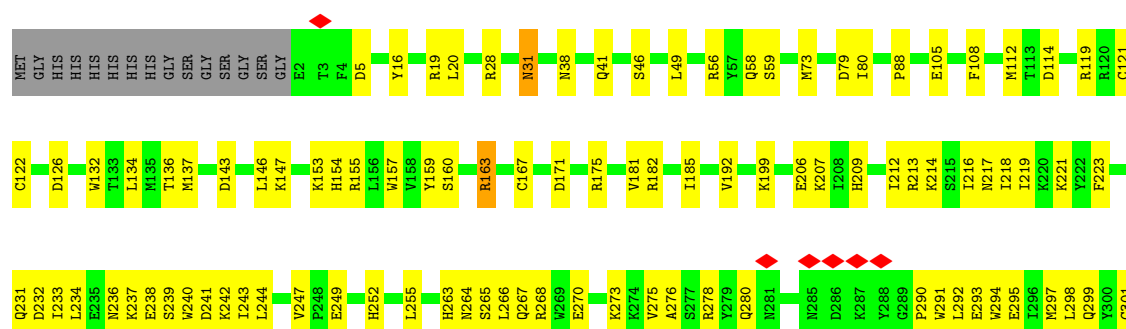
• Molecule 2: CST complex subunit STN1



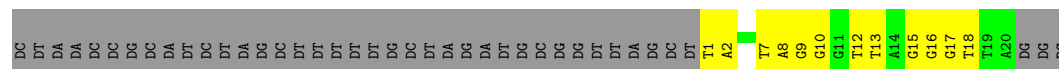
• Molecule 3: CST complex subunit TEN1



• Molecule 4: DNA primase small subunit







4 Experimental information

Property	Value	Source
EM reconstruction method	SINGLE PARTICLE	Depositor
Imposed symmetry	POINT, C1	Depositor
Number of particles used	32550	Depositor
Resolution determination method	FSC 0.143 CUT-OFF	Depositor
CTF correction method	PHASE FLIPPING AND AMPLITUDE CORRECTION	Depositor
Microscope	FEI TITAN KRIOS	Depositor
Voltage (kV)	300	Depositor
Electron dose ($e^-/\text{\AA}^2$)	50	Depositor
Minimum defocus (nm)	700	Depositor
Maximum defocus (nm)	2800	Depositor
Magnification	Not provided	
Image detector	GATAN K3 BIOQUANTUM (6k x 4k)	Depositor
Maximum map value	1.724	Depositor
Minimum map value	-0.814	Depositor
Average map value	0.002	Depositor
Map value standard deviation	0.040	Depositor
Recommended contour level	0.3	Depositor
Map size (Å)	440.0, 440.0, 440.0	wwPDB
Map dimensions	400, 400, 400	wwPDB
Map angles (°)	90.0, 90.0, 90.0	wwPDB
Pixel spacing (Å)	1.1, 1.1, 1.1	Depositor

5 Model quality [i](#)

5.1 Standard geometry [i](#)

The Z score for a bond length (or angle) is the number of standard deviations the observed value is removed from the expected value. A bond length (or angle) with $|Z| > 5$ is considered an outlier worth inspection. RMSZ is the root-mean-square of all Z scores of the bond lengths (or angles).

Mol	Chain	Bond lengths		Bond angles	
		RMSZ	$\# Z > 5$	RMSZ	$\# Z > 5$
1	A	0.24	0/8963	0.49	0/12218
2	B	0.25	0/2979	0.48	0/4026
3	C	0.26	0/972	0.52	0/1314
4	D	0.25	0/3601	0.46	0/4854
5	E	0.25	0/3616	0.48	0/4864
6	F	0.24	0/7544	0.45	0/10179
7	G	0.25	0/3623	0.47	0/4924
8	H	0.54	0/474	1.00	0/733
All	All	0.25	0/31772	0.49	0/43112

There are no bond length outliers.

There are no bond angle outliers.

There are no chirality outliers.

There are no planarity outliers.

5.2 Too-close contacts [i](#)

In the following table, the Non-H and H(model) columns list the number of non-hydrogen atoms and hydrogen atoms in the chain respectively. The H(added) column lists the number of hydrogen atoms added and optimized by MolProbity. The Clashes column lists the number of clashes within the asymmetric unit, whereas Symm-Clashes lists symmetry-related clashes.

Mol	Chain	Non-H	H(model)	H(added)	Clashes	Symm-Clashes
1	A	8734	0	8828	148	0
2	B	2923	0	2920	50	0
3	C	954	0	960	17	0
4	D	3514	0	3475	87	0
5	E	3535	0	3524	87	0
6	F	7388	0	7495	140	0
7	G	3541	0	3510	59	0
8	H	422	0	228	9	0

Continued on next page...

Continued from previous page...

Mol	Chain	Non-H	H(model)	H(added)	Clashes	Symm-Clashes
All	All	31011	0	30940	578	0

The all-atom clashscore is defined as the number of clashes found per 1000 atoms (including hydrogen atoms). The all-atom clashscore for this structure is 9.

The worst 5 of 578 close contacts within the same asymmetric unit are listed below, sorted by their clash magnitude.

Atom-1	Atom-2	Interatomic distance (Å)	Clash overlap (Å)
5:E:223:ARG:HH12	5:E:227:SER:HB2	1.38	0.86
4:D:255:LEU:HD21	4:D:275:VAL:HG11	1.66	0.76
6:F:732:TYR:HA	6:F:738:LEU:HD21	1.69	0.75
1:A:23:ILE:HG12	1:A:27:LEU:HD12	1.70	0.72
6:F:388:TYR:HB2	6:F:477:PHE:HB2	1.71	0.72

There are no symmetry-related clashes.

5.3 Torsion angles [i](#)

5.3.1 Protein backbone [i](#)

In the following table, the Percentiles column shows the percent Ramachandran outliers of the chain as a percentile score with respect to all PDB entries followed by that with respect to all EM entries.

The Analysed column shows the number of residues for which the backbone conformation was analysed, and the total number of residues.

Mol	Chain	Analysed	Favoured	Allowed	Outliers	Percentiles	
1	A	1106/1246 (89%)	1071 (97%)	33 (3%)	2 (0%)	47	81
2	B	360/374 (96%)	343 (95%)	17 (5%)	0	100	100
3	C	119/152 (78%)	117 (98%)	2 (2%)	0	100	100
4	D	417/434 (96%)	403 (97%)	14 (3%)	0	100	100
5	E	427/523 (82%)	404 (95%)	22 (5%)	1 (0%)	47	81
6	F	909/1527 (60%)	868 (96%)	41 (4%)	0	100	100
7	G	454/612 (74%)	440 (97%)	13 (3%)	1 (0%)	47	81
All	All	3792/4868 (78%)	3646 (96%)	142 (4%)	4 (0%)	54	85

All (4) Ramachandran outliers are listed below:

Mol	Chain	Res	Type
1	A	891	PHE
1	A	890	ASN
5	E	255	HIS
7	G	516	GLU

5.3.2 Protein sidechains [i](#)

In the following table, the Percentiles column shows the percent sidechain outliers of the chain as a percentile score with respect to all PDB entries followed by that with respect to all EM entries.

The Analysed column shows the number of residues for which the sidechain conformation was analysed, and the total number of residues.

Mol	Chain	Analysed	Rotameric	Outliers	Percentiles	
1	A	981/1089 (90%)	980 (100%)	1 (0%)	93	97
2	B	327/338 (97%)	326 (100%)	1 (0%)	92	95
3	C	105/132 (80%)	105 (100%)	0	100	100
4	D	392/402 (98%)	389 (99%)	3 (1%)	81	89
5	E	391/468 (84%)	390 (100%)	1 (0%)	92	95
6	F	833/1344 (62%)	831 (100%)	2 (0%)	93	96
7	G	402/536 (75%)	400 (100%)	2 (0%)	88	93
All	All	3431/4309 (80%)	3421 (100%)	10 (0%)	92	95

5 of 10 residues with a non-rotameric sidechain are listed below:

Mol	Chain	Res	Type
6	F	1075	LYS
7	G	185	ARG
7	G	479	HIS
4	D	163	ARG
4	D	304	ARG

Sometimes sidechains can be flipped to improve hydrogen bonding and reduce clashes. All (3) such sidechains are listed below:

Mol	Chain	Res	Type
1	A	402	GLN
1	A	432	GLN
6	F	946	GLN

5.3.3 RNA [i](#)

There are no RNA molecules in this entry.

5.4 Non-standard residues in protein, DNA, RNA chains [i](#)

There are no non-standard protein/DNA/RNA residues in this entry.

5.5 Carbohydrates [i](#)

There are no monosaccharides in this entry.

5.6 Ligand geometry [i](#)

There are no ligands in this entry.

5.7 Other polymers [i](#)

There are no such residues in this entry.

5.8 Polymer linkage issues [i](#)

There are no chain breaks in this entry.

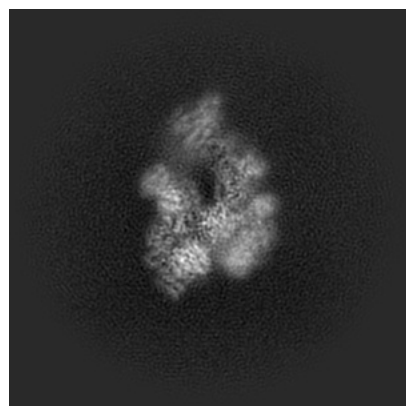
6 Map visualisation [i](#)

This section contains visualisations of the EMDB entry EMD-27107. These allow visual inspection of the internal detail of the map and identification of artifacts.

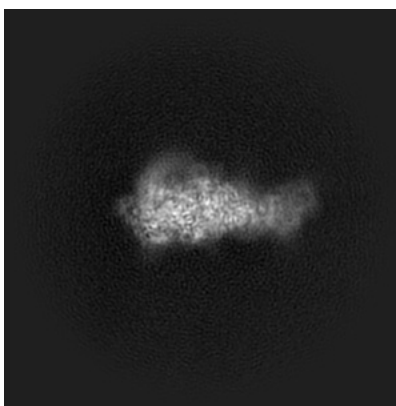
Images derived from a raw map, generated by summing the deposited half-maps, are presented below the corresponding image components of the primary map to allow further visual inspection and comparison with those of the primary map.

6.1 Orthogonal projections [i](#)

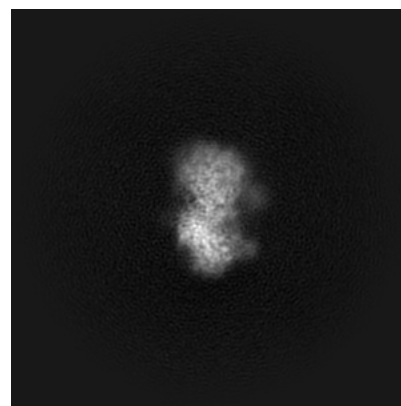
6.1.1 Primary map



X

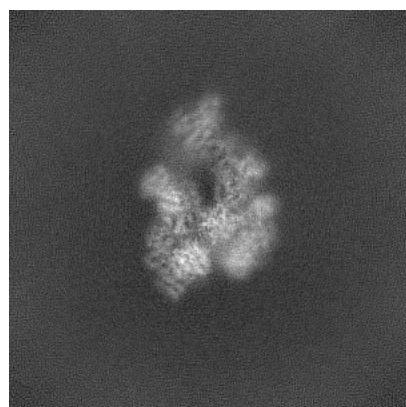


Y

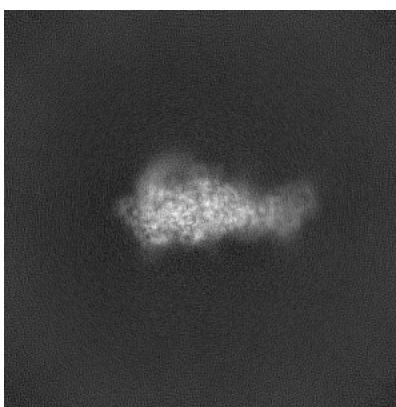


Z

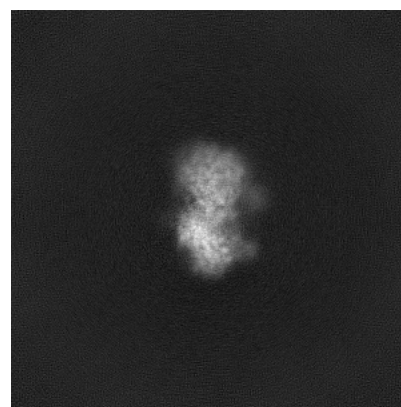
6.1.2 Raw map



X



Y

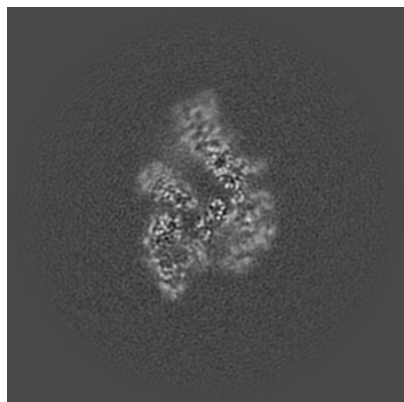


Z

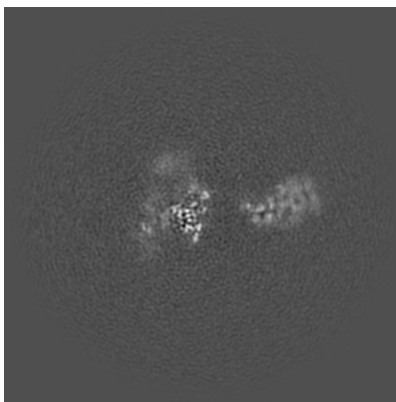
The images above show the map projected in three orthogonal directions.

6.2 Central slices [i](#)

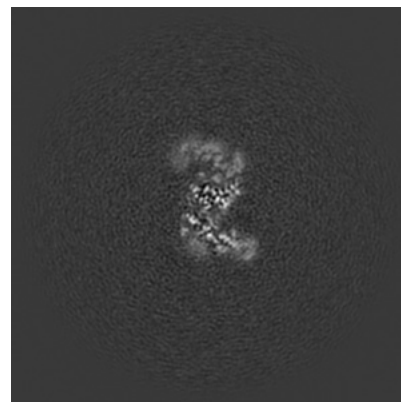
6.2.1 Primary map



X Index: 200

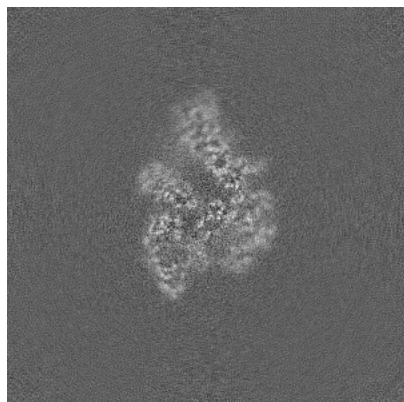


Y Index: 200

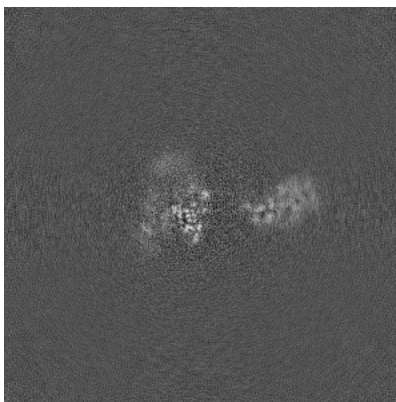


Z Index: 200

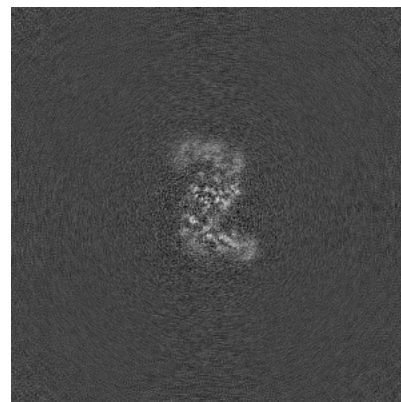
6.2.2 Raw map



X Index: 200



Y Index: 200

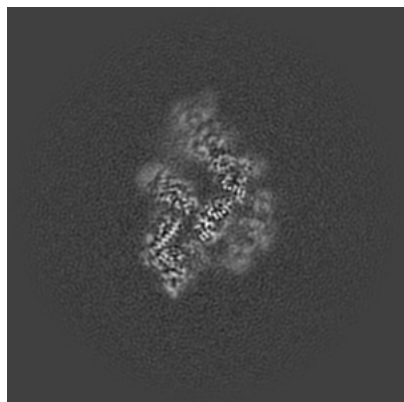


Z Index: 200

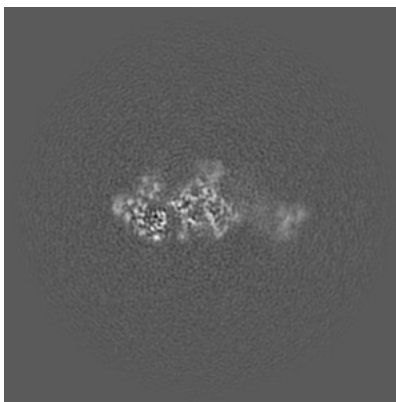
The images above show central slices of the map in three orthogonal directions.

6.3 Largest variance slices [i](#)

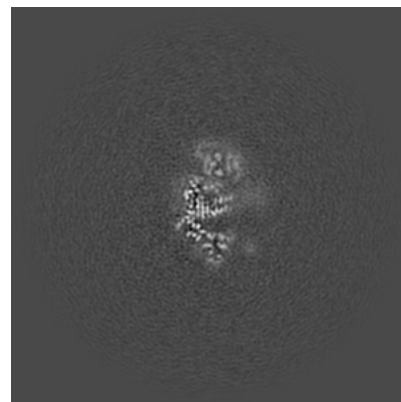
6.3.1 Primary map



X Index: 196



Y Index: 168

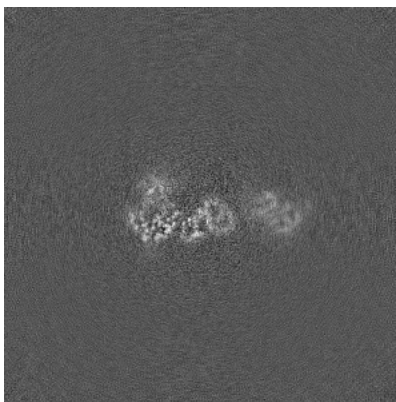


Z Index: 185

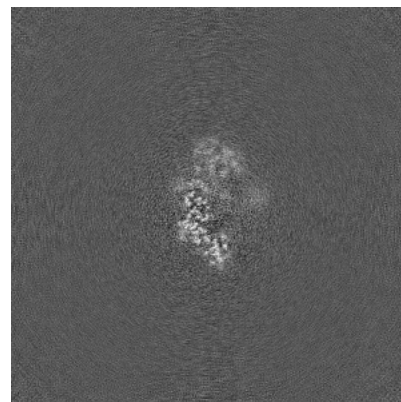
6.3.2 Raw map



X Index: 196



Y Index: 180

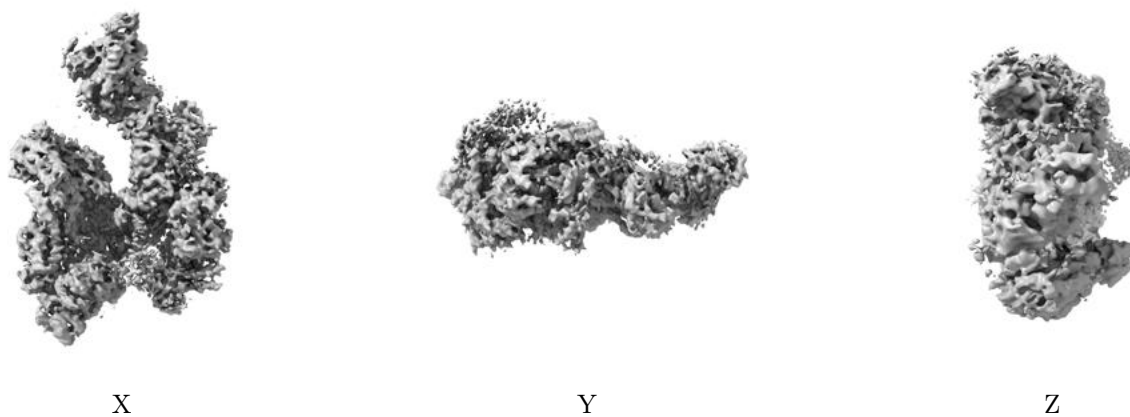


Z Index: 179

The images above show the largest variance slices of the map in three orthogonal directions.

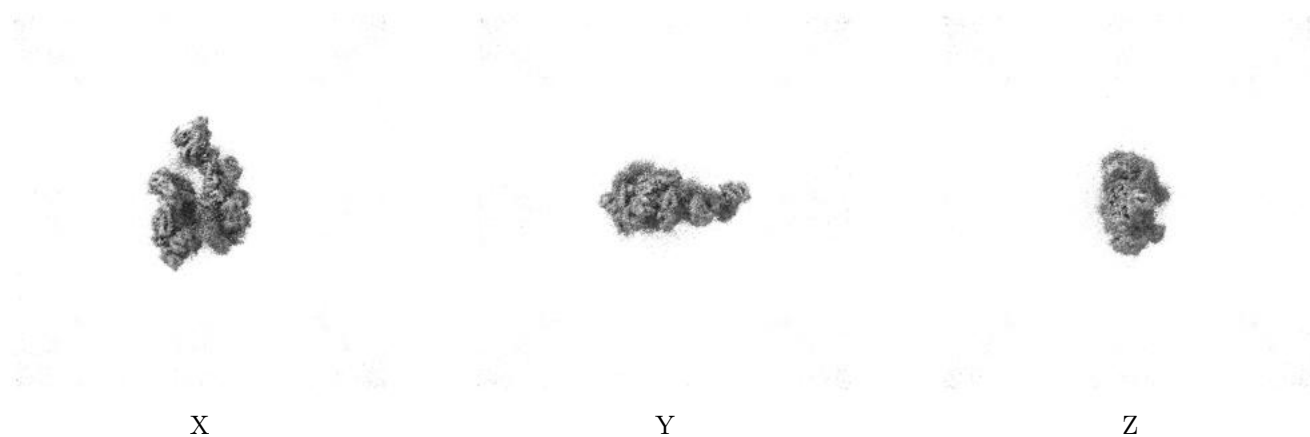
6.4 Orthogonal surface views [i](#)

6.4.1 Primary map



The images above show the 3D surface view of the map at the recommended contour level 0.3. These images, in conjunction with the slice images, may facilitate assessment of whether an appropriate contour level has been provided.

6.4.2 Raw map



These images show the 3D surface of the raw map. The raw map's contour level was selected so that its surface encloses the same volume as the primary map does at its recommended contour level.

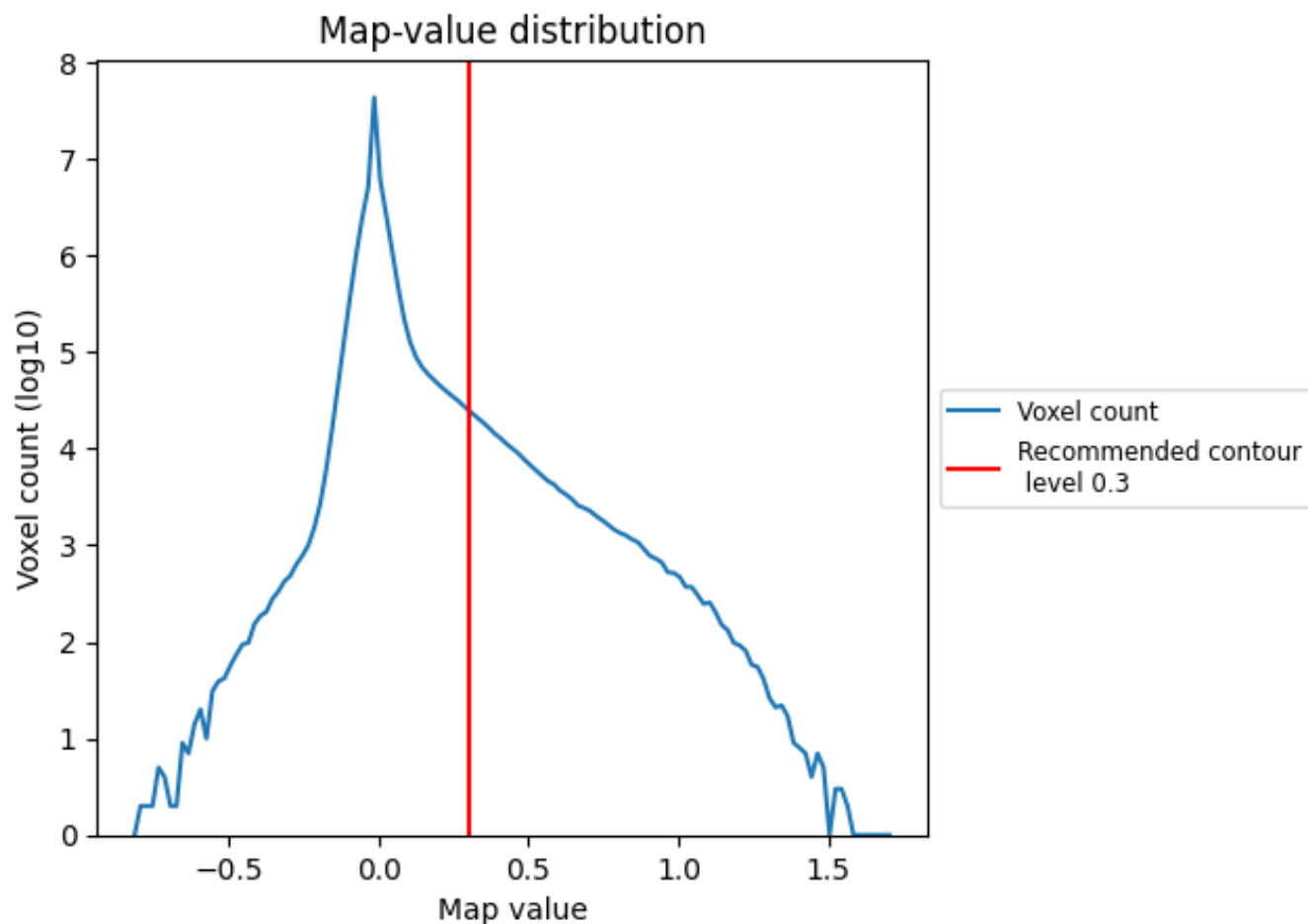
6.5 Mask visualisation [i](#)

This section was not generated. No masks/segmentation were deposited.

7 Map analysis [i](#)

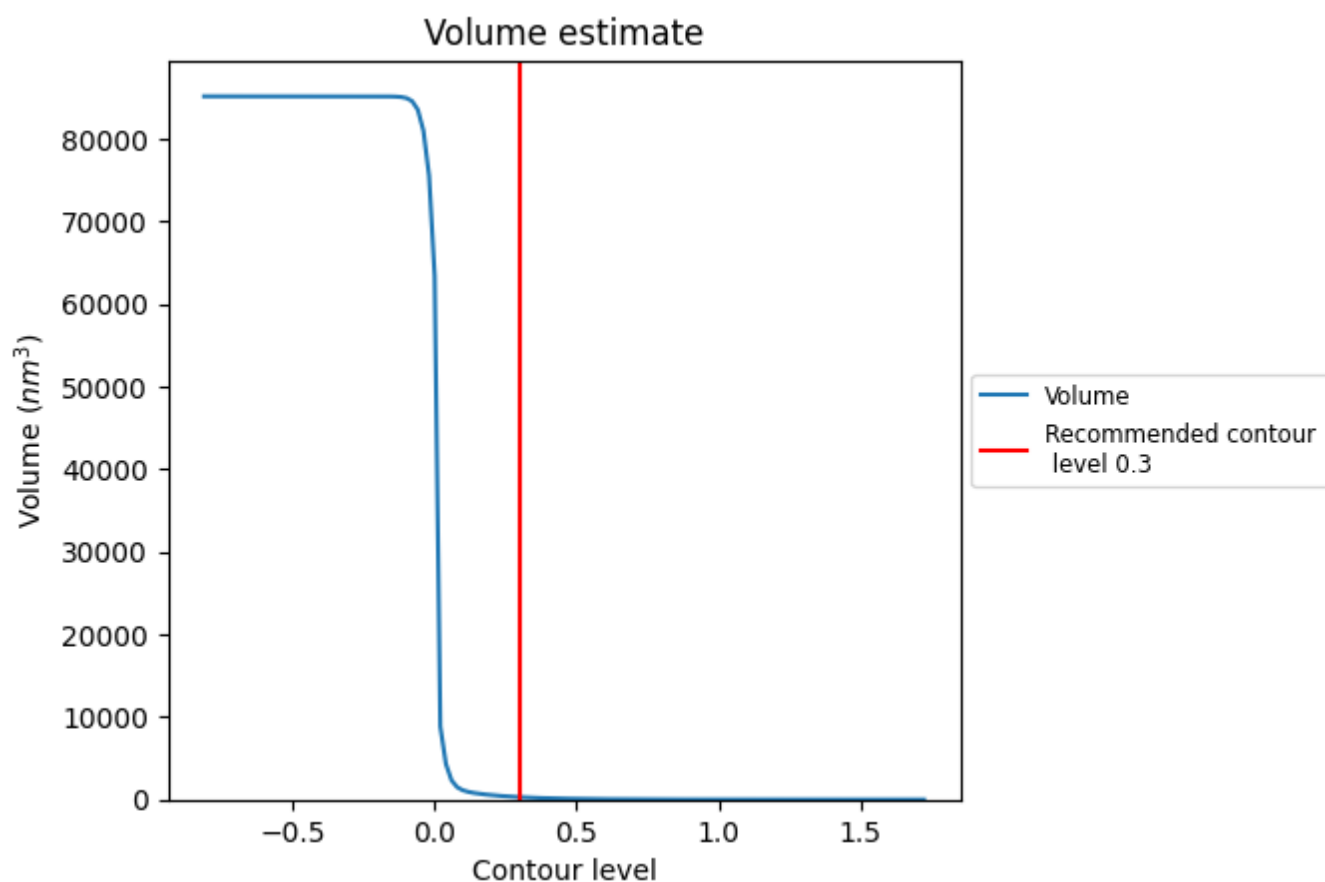
This section contains the results of statistical analysis of the map.

7.1 Map-value distribution [i](#)



The map-value distribution is plotted in 128 intervals along the x-axis. The y-axis is logarithmic. A spike in this graph at zero usually indicates that the volume has been masked.

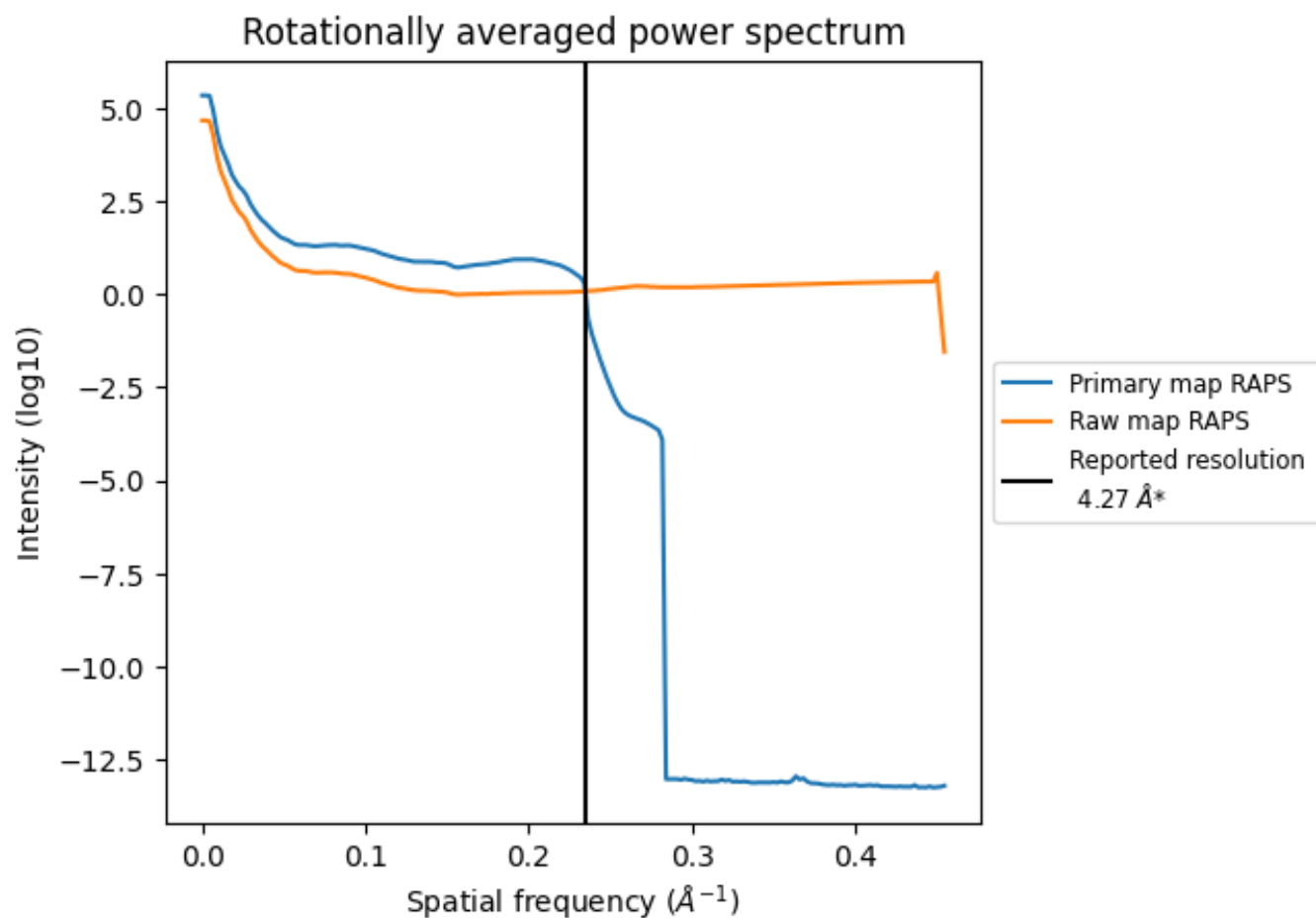
7.2 Volume estimate [i](#)



The volume at the recommended contour level is 290 nm^3 ; this corresponds to an approximate mass of 262 kDa.

The volume estimate graph shows how the enclosed volume varies with the contour level. The recommended contour level is shown as a vertical line and the intersection between the line and the curve gives the volume of the enclosed surface at the given level.

7.3 Rotationally averaged power spectrum ⓘ

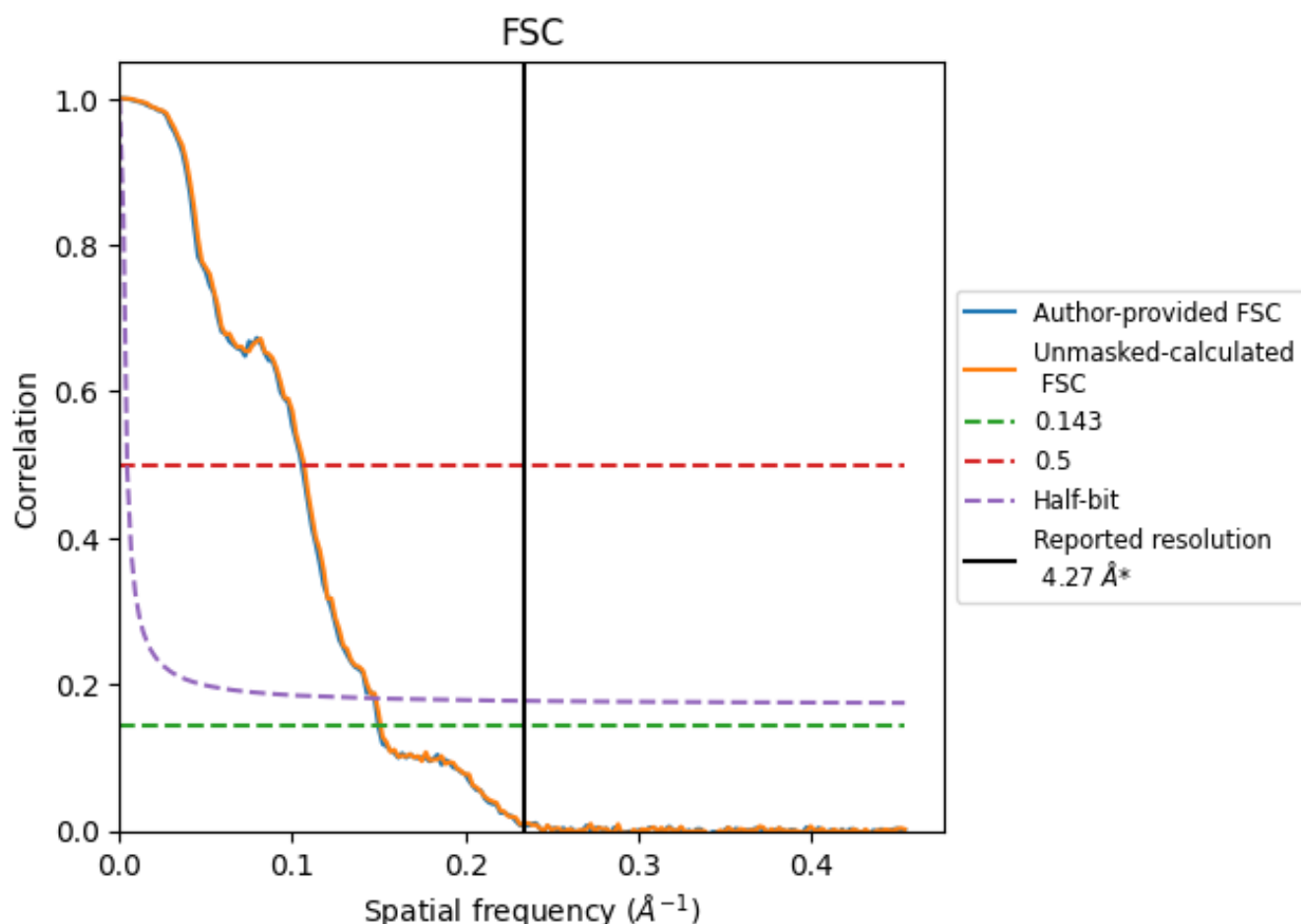


*Reported resolution corresponds to spatial frequency of 0.234 Å⁻¹

8 Fourier-Shell correlation [i](#)

Fourier-Shell Correlation (FSC) is the most commonly used method to estimate the resolution of single-particle and subtomogram-averaged maps. The shape of the curve depends on the imposed symmetry, mask and whether or not the two 3D reconstructions used were processed from a common reference. The reported resolution is shown as a black line. A curve is displayed for the half-bit criterion in addition to lines showing the 0.143 gold standard cut-off and 0.5 cut-off.

8.1 FSC [i](#)



*Reported resolution corresponds to spatial frequency of 0.234 Å⁻¹

8.2 Resolution estimates [i](#)

Resolution estimate (Å)	Estimation criterion (FSC cut-off)		
	0.143	0.5	Half-bit
Reported by author	4.27	-	-
Author-provided FSC curve	6.67	9.48	6.78
Unmasked-calculated*	6.61	9.35	6.74

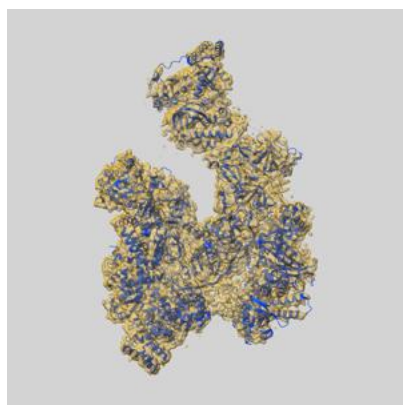
*Resolution estimate based on FSC curve calculated by comparison of deposited half-maps. The value from author-provided FSC intersecting FSC 0.143 CUT-OFF 6.67 differs from the reported value 4.27 by more than 10 %

The value from deposited half-maps intersecting FSC 0.143 CUT-OFF 6.61 differs from the reported value 4.27 by more than 10 %

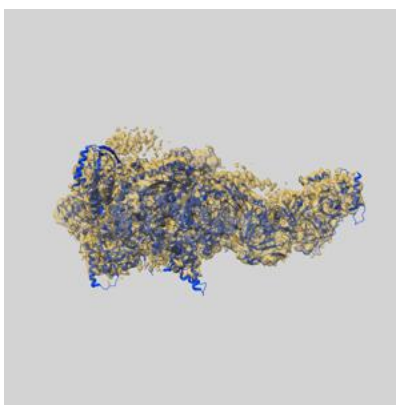
9 Map-model fit [i](#)

This section contains information regarding the fit between EMDB map EMD-27107 and PDB model 8D0K. Per-residue inclusion information can be found in section 3 on page 11.

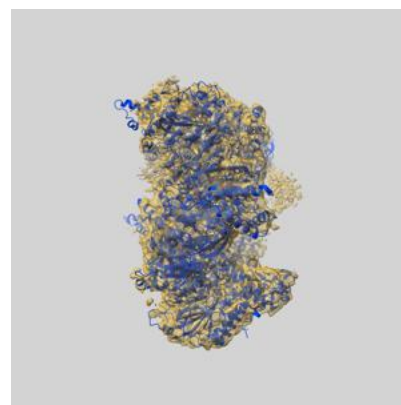
9.1 Map-model overlay [i](#)



X



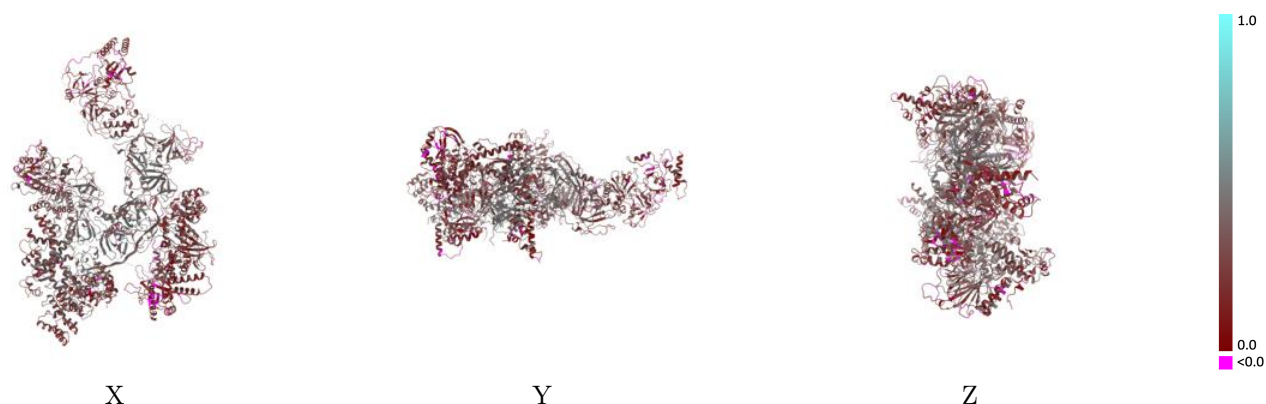
Y



Z

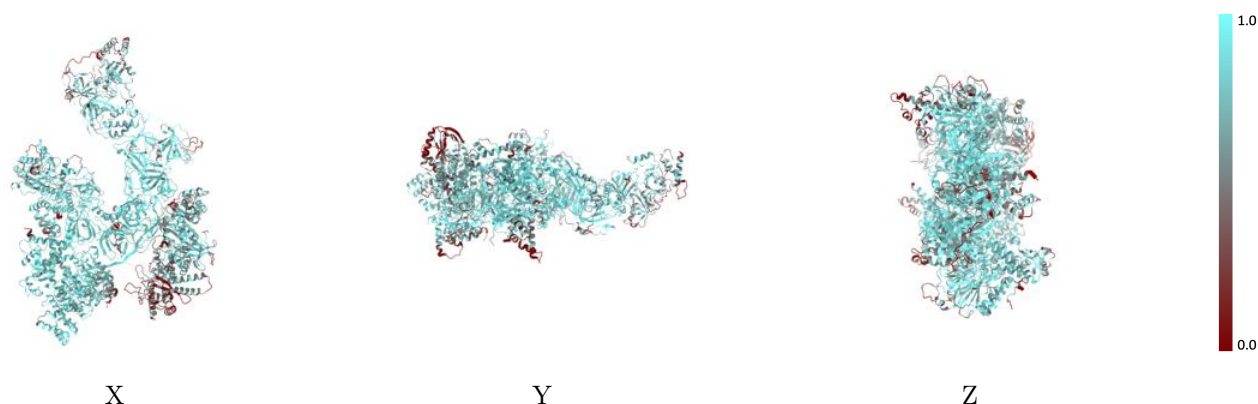
The images above show the 3D surface view of the map at the recommended contour level 0.3 at 50% transparency in yellow overlaid with a ribbon representation of the model coloured in blue. These images allow for the visual assessment of the quality of fit between the atomic model and the map.

9.2 Q-score mapped to coordinate model [i](#)



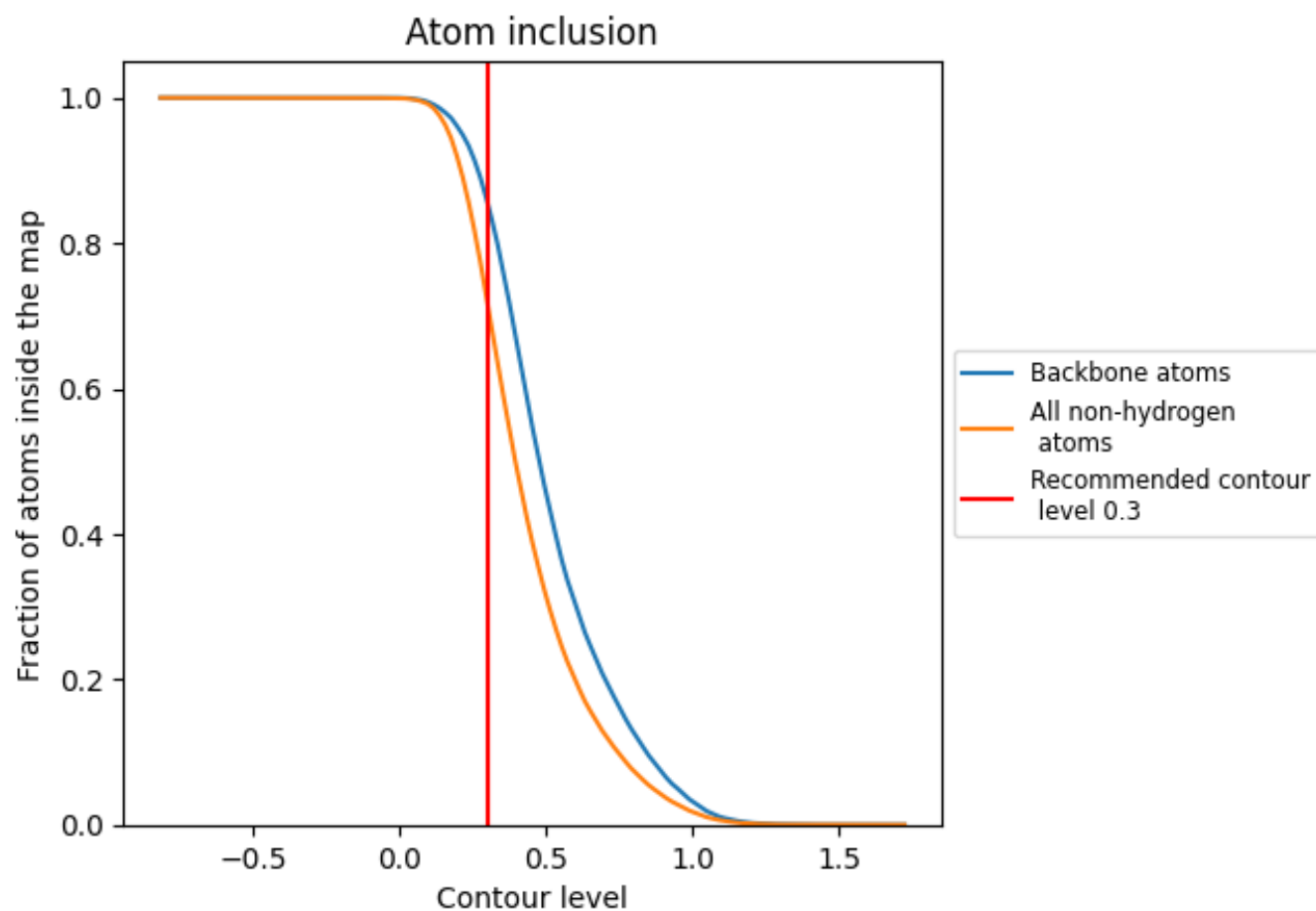
The images above show the model with each residue coloured according to its Q-score. This shows their resolvability in the map with higher Q-score values reflecting better resolvability. Please note: Q-score is calculating the resolvability of atoms, and thus high values are only expected at resolutions at which atoms can be resolved. Low Q-score values may therefore be expected for many entries.

9.3 Atom inclusion mapped to coordinate model [i](#)



The images above show the model with each residue coloured according to its atom inclusion. This shows to what extent they are inside the map at the recommended contour level (0.3).

9.4 Atom inclusion [i](#)



At the recommended contour level, 86% of all backbone atoms, 72% of all non-hydrogen atoms, are inside the map.

9.5 Map-model fit summary ⓘ

The table lists the average atom inclusion at the recommended contour level (0.3) and Q-score for the entire model and for each chain.

Chain	Atom inclusion	Q-score
All	<div></div> 0.7211	<div></div> 0.3110
A	<div></div> 0.7415	<div></div> 0.3160
B	<div></div> 0.6506	<div></div> 0.3250
C	<div></div> 0.9024	<div></div> 0.4350
D	<div></div> 0.8045	<div></div> 0.3530
E	<div></div> 0.7924	<div></div> 0.3250
F	<div></div> 0.6018	<div></div> 0.2530
G	<div></div> 0.7517	<div></div> 0.3100
H	<div></div> 0.9242	<div></div> 0.3650

1.0

0.0

<0.0