



# Full wwPDB X-ray Structure Validation Report ⓘ

Sep 13, 2020 – 07:07 PM BST

PDB ID : 5D3U  
Title : Crystal structure of the 5-selective H176F mutant of Cytochrome TxtE  
Authors : Cahn, J.K.B.; Dodani, S.C.; Arnold, F.H.  
Deposited on : 2015-08-06  
Resolution : 1.45 Å(reported)

This is a Full wwPDB X-ray Structure Validation Report for a publicly released PDB entry.

We welcome your comments at [validation@mail.wwpdb.org](mailto:validation@mail.wwpdb.org)

A user guide is available at

<https://www.wwpdb.org/validation/2017/XrayValidationReportHelp>

with specific help available everywhere you see the ⓘ symbol.

---

The following versions of software and data (see [references ⓘ](#)) were used in the production of this report:

MolProbity : 4.02b-467  
Mogul : 1.8.5 (274361), CSD as541be (2020)  
Xtriage (Phenix) : 1.13  
EDS : 2.14.4.dev1  
buster-report : 1.1.7 (2018)  
Percentile statistics : 20191225.v01 (using entries in the PDB archive December 25th 2019)  
Refmac : 5.8.0158  
CCP4 : 7.0.044 (Gargrove)  
Ideal geometry (proteins) : Engh & Huber (2001)  
Ideal geometry (DNA, RNA) : Parkinson et al. (1996)  
Validation Pipeline (wwPDB-VP) : 2.14.4.dev1

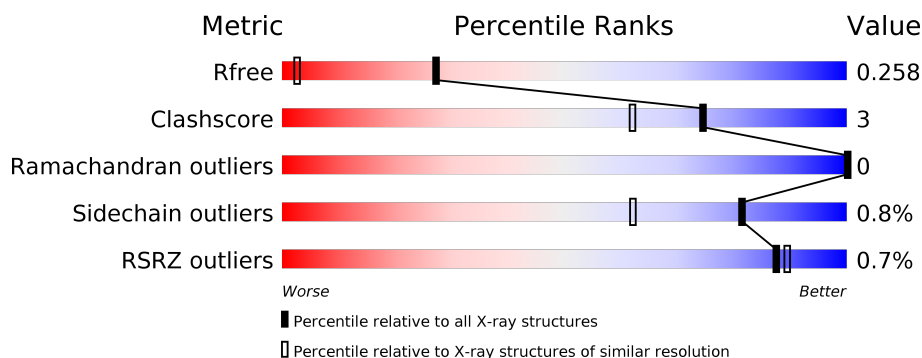
# 1 Overall quality at a glance

The following experimental techniques were used to determine the structure:

## *X-RAY DIFFRACTION*

The reported resolution of this entry is 1.45 Å.

Percentile scores (ranging between 0-100) for global validation metrics of the entry are shown in the following graphic. The table shows the number of entries on which the scores are based.



Metric	Whole archive (#Entries)	Similar resolution (#Entries, resolution range(Å))
$R_{free}$	130704	1156 (1.46-1.46)
Clashscore	141614	1202 (1.46-1.46)
Ramachandran outliers	138981	1178 (1.46-1.46)
Sidechain outliers	138945	1178 (1.46-1.46)
RSRZ outliers	127900	1139 (1.46-1.46)

The table below summarises the geometric issues observed across the polymeric chains and their fit to the electron density. The red, orange, yellow and green segments on the lower bar indicate the fraction of residues that contain outliers for  $\geq 3$ , 2, 1 and 0 types of geometric quality criteria respectively. A grey segment represents the fraction of residues that are not modelled. The numeric value for each fraction is indicated below the corresponding segment, with a dot representing fractions  $\leq 5\%$ . The upper red bar (where present) indicates the fraction of residues that have poor fit to the electron density. The numeric value is given above the bar.

Mol	Chain	Length	Quality of chain
1	A	427	
1	B	427	

## 2 Entry composition

There are 6 unique types of molecules in this entry. The entry contains 7479 atoms, of which 0 are hydrogens and 0 are deuteriums.

In the tables below, the ZeroOcc column contains the number of atoms modelled with zero occupancy, the AltConf column contains the number of residues with at least one atom in alternate conformation and the Trace column contains the number of residues modelled with at most 2 atoms.

- Molecule 1 is a protein called P450-like protein.

Mol	Chain	Residues	Atoms					ZeroOcc	AltConf	Trace
1	A	403	Total	C	N	O	S	0	9	0
			3202	2041	572	581	8			
1	B	403	Total	C	N	O	S	0	6	0
			3168	2017	565	578	8			

There are 44 discrepancies between the modelled and reference sequences:

Chain	Residue	Modelled	Actual	Comment	Reference
A	-20	MET	-	initiating methionine	UNP C9ZDC6
A	-19	GLY	-	expression tag	UNP C9ZDC6
A	-18	SER	-	expression tag	UNP C9ZDC6
A	-17	SER	-	expression tag	UNP C9ZDC6
A	-16	HIS	-	expression tag	UNP C9ZDC6
A	-15	HIS	-	expression tag	UNP C9ZDC6
A	-14	HIS	-	expression tag	UNP C9ZDC6
A	-13	HIS	-	expression tag	UNP C9ZDC6
A	-12	HIS	-	expression tag	UNP C9ZDC6
A	-11	HIS	-	expression tag	UNP C9ZDC6
A	-10	SER	-	expression tag	UNP C9ZDC6
A	-9	SER	-	expression tag	UNP C9ZDC6
A	-8	GLY	-	expression tag	UNP C9ZDC6
A	-7	LEU	-	expression tag	UNP C9ZDC6
A	-6	VAL	-	expression tag	UNP C9ZDC6
A	-5	PRO	-	expression tag	UNP C9ZDC6
A	-4	ARG	-	expression tag	UNP C9ZDC6
A	-3	GLY	-	expression tag	UNP C9ZDC6
A	-2	SER	-	expression tag	UNP C9ZDC6
A	-1	HIS	-	expression tag	UNP C9ZDC6
A	0	MET	-	expression tag	UNP C9ZDC6
A	176	PHE	HIS	engineered mutation	UNP C9ZDC6
B	-20	MET	-	initiating methionine	UNP C9ZDC6
B	-19	GLY	-	expression tag	UNP C9ZDC6
B	-18	SER	-	expression tag	UNP C9ZDC6

*Continued on next page...*

Chain	Residue	Modelled	Actual	Comment	Reference
B	-17	SER	-	expression tag	UNP C9ZDC6
B	-16	HIS	-	expression tag	UNP C9ZDC6
B	-15	HIS	-	expression tag	UNP C9ZDC6
B	-14	HIS	-	expression tag	UNP C9ZDC6
B	-13	HIS	-	expression tag	UNP C9ZDC6
B	-12	HIS	-	expression tag	UNP C9ZDC6
B	-11	HIS	-	expression tag	UNP C9ZDC6
B	-10	SER	-	expression tag	UNP C9ZDC6
B	-9	SER	-	expression tag	UNP C9ZDC6
B	-8	GLY	-	expression tag	UNP C9ZDC6
B	-7	LEU	-	expression tag	UNP C9ZDC6
B	-6	VAL	-	expression tag	UNP C9ZDC6
B	-5	PRO	-	expression tag	UNP C9ZDC6
B	-4	ARG	-	expression tag	UNP C9ZDC6
B	-3	GLY	-	expression tag	UNP C9ZDC6
B	-2	SER	-	expression tag	UNP C9ZDC6
B	-1	HIS	-	expression tag	UNP C9ZDC6
B	0	MET	-	expression tag	UNP C9ZDC6
B	176	PHE	HIS	engineered mutation	UNP C9ZDC6

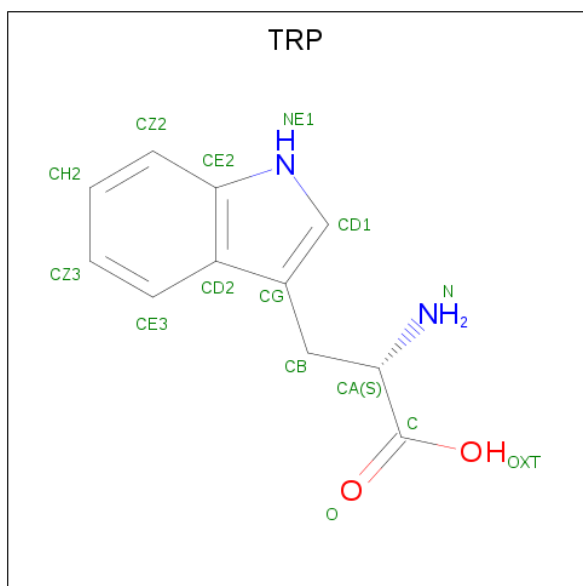
- # HEM

*Continued on next page...*

Continued from previous page...

Mol	Chain	Residues	Atoms				ZeroOcc	AltConf
			Total	C	Fe	N	O	
2	B	1	43	34	1	4	4	0

- Molecule 3 is TRYPTOPHAN (three-letter code: TRP) (formula:  $C_{11}H_{12}N_2O_2$ ).



Mol	Chain	Residues	Atoms				ZeroOcc	AltConf
			Total	C	N	O		
3	A	1	15	11	2	2	0	0
3	B	1	15	11	2	2	0	0

- Molecule 4 is GLYCEROL (three-letter code: GOL) (formula:  $C_3H_8O_3$ ).



Mol	Chain	Residues	Atoms			ZeroOcc	AltConf
4	A	1	Total	C	O	0	0
			6	3	3		
4	B	1	Total	C	O	0	0
			6	3	3		

- Molecule 5 is CHLORIDE ION (three-letter code: CL) (formula: Cl).

Mol	Chain	Residues	Atoms		ZeroOcc	AltConf
5	B	1	Total	Cl	0	0
			1	1		

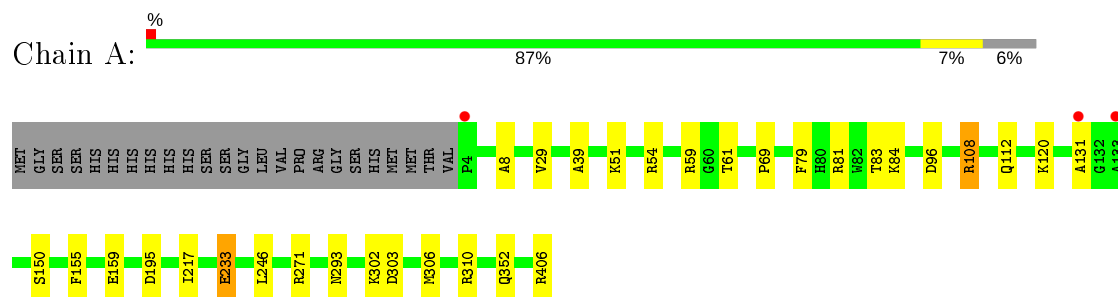
- Molecule 6 is water.

Mol	Chain	Residues	Atoms		ZeroOcc	AltConf
6	A	485	Total	O	0	0
			485	485		
6	B	495	Total	O	0	0
			495	495		

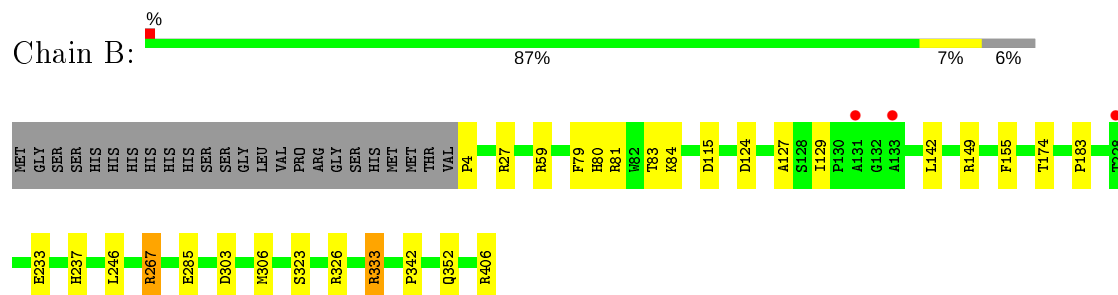
### 3 Residue-property plots [i](#)

These plots are drawn for all protein, RNA, DNA and oligosaccharide chains in the entry. The first graphic for a chain summarises the proportions of the various outlier classes displayed in the second graphic. The second graphic shows the sequence view annotated by issues in geometry and electron density. Residues are color-coded according to the number of geometric quality criteria for which they contain at least one outlier: green = 0, yellow = 1, orange = 2 and red = 3 or more. A red dot above a residue indicates a poor fit to the electron density ( $RSRZ > 2$ ). Stretches of 2 or more consecutive residues without any outlier are shown as a green connector. Residues present in the sample, but not in the model, are shown in grey.

#### • Molecule 1: P450-like protein



#### • Molecule 1: P450-like protein



## 4 Data and refinement statistics

Property	Value	Source
Space group	P 21 21 21	Depositor
Cell constants a, b, c, $\alpha$ , $\beta$ , $\gamma$	74.80 Å 99.35 Å 105.50 Å 90.00° 90.00° 90.00°	Depositor
Resolution (Å)	72.33 – 1.45 36.16 – 1.45	Depositor EDS
% Data completeness (in resolution range)	97.9 (72.33-1.45) 97.9 (36.16-1.45)	Depositor EDS
$R_{merge}$	(Not available)	Depositor
$R_{sym}$	0.14	Depositor
$\langle I/\sigma(I) \rangle$ <sup>1</sup>	2.00 (at 1.45 Å)	Xtriage
Refinement program	REFMAC	Depositor
R, $R_{free}$	0.187 , 0.251 0.197 , 0.258	Depositor DCC
$R_{free}$ test set	6899 reflections (5.05%)	wwPDB-VP
Wilson B-factor (Å <sup>2</sup> )	8.7	Xtriage
Anisotropy	0.168	Xtriage
Bulk solvent $k_{sol}$ (e/Å <sup>3</sup> ), $B_{sol}$ (Å <sup>2</sup> )	0.37 , 44.3	EDS
L-test for twinning <sup>2</sup>	$\langle  L  \rangle = 0.52$ , $\langle L^2 \rangle = 0.36$	Xtriage
Estimated twinning fraction	No twinning to report.	Xtriage
$F_o, F_c$ correlation	0.96	EDS
Total number of atoms	7479	wwPDB-VP
Average B, all atoms (Å <sup>2</sup> )	14.0	wwPDB-VP

Xtriage's analysis on translational NCS is as follows: *The analyses of the Patterson function reveals a significant off-origin peak that is 58.57 % of the origin peak, indicating pseudo-translational symmetry. The chance of finding a peak of this or larger height randomly in a structure without pseudo-translational symmetry is equal to 2.0053e-05. The detected translational NCS is most likely also responsible for the elevated intensity ratio.*

<sup>1</sup>Intensities estimated from amplitudes.

<sup>2</sup>Theoretical values of  $\langle |L| \rangle$ ,  $\langle L^2 \rangle$  for acentric reflections are 0.5, 0.333 respectively for untwinned datasets, and 0.375, 0.2 for perfectly twinned datasets.



## 5 Model quality

### 5.1 Standard geometry

Bond lengths and bond angles in the following residue types are not validated in this section: GOL, CL, HEM

The Z score for a bond length (or angle) is the number of standard deviations the observed value is removed from the expected value. A bond length (or angle) with  $|Z| > 5$  is considered an outlier worth inspection. RMSZ is the root-mean-square of all Z scores of the bond lengths (or angles).

Mol	Chain	Bond lengths		Bond angles	
		RMSZ	$\# Z  > 5$	RMSZ	$\# Z  > 5$
1	A	0.96	1/3308 (0.0%)	0.98	8/4516 (0.2%)
1	B	0.99	3/3266 (0.1%)	1.07	14/4460 (0.3%)
All	All	0.97	4/6574 (0.1%)	1.03	22/8976 (0.2%)

Chiral center outliers are detected by calculating the chiral volume of a chiral center and verifying if the center is modelled as a planar moiety or with the opposite hand. A planarity outlier is detected by checking planarity of atoms in a peptide group, atoms in a mainchain group or atoms of a sidechain that are expected to be planar.

Mol	Chain	#Chirality outliers	#Planarity outliers
1	A	0	1
1	B	0	1
All	All	0	2

All (4) bond length outliers are listed below:

Mol	Chain	Res	Type	Atoms	Z	Observed(Å)	Ideal(Å)
1	B	285	GLU	CD-OE2	5.58	1.31	1.25
1	B	323	SER	CB-OG	5.54	1.49	1.42
1	B	127	ALA	CA-CB	5.21	1.63	1.52
1	A	233	GLU	CG-CD	5.09	1.59	1.51

All (22) bond angle outliers are listed below:

Mol	Chain	Res	Type	Atoms	Z	Observed(°)	Ideal(°)
1	B	333	ARG	NE-CZ-NH1	13.33	126.96	120.30
1	B	333	ARG	NE-CZ-NH2	-12.06	114.27	120.30
1	B	81	ARG	NE-CZ-NH2	-8.11	116.25	120.30
1	B	303	ASP	CB-CG-OD1	7.91	125.42	118.30
1	B	306	MET	CG-SD-CE	-7.60	88.04	100.20

*Continued on next page...*

*Continued from previous page...*

Mol	Chain	Res	Type	Atoms	Z	Observed(°)	Ideal(°)
1	A	54	ARG	NE-CZ-NH2	-7.34	116.63	120.30
1	B	326	ARG	NE-CZ-NH1	-7.18	116.71	120.30
1	A	271	ARG	NE-CZ-NH1	7.00	123.80	120.30
1	B	326	ARG	NE-CZ-NH2	6.91	123.75	120.30
1	B	81	ARG	NE-CZ-NH1	6.88	123.74	120.30
1	B	27	ARG	NE-CZ-NH2	-6.77	116.92	120.30
1	B	149	ARG	NE-CZ-NH2	-6.39	117.11	120.30
1	B	303	ASP	CB-CG-OD2	-6.35	112.59	118.30
1	A	108	ARG	NE-CZ-NH2	-6.10	117.25	120.30
1	B	27	ARG	NE-CZ-NH1	5.90	123.25	120.30
1	A	303	ASP	CB-CG-OD1	5.72	123.45	118.30
1	B	115	ASP	CB-CG-OD2	-5.65	113.21	118.30
1	A	195	ASP	CB-CG-OD2	-5.64	113.22	118.30
1	A	302	LYS	CD-CE-NZ	-5.49	99.08	111.70
1	B	124	ASP	CB-CG-OD1	5.30	123.07	118.30
1	A	195	ASP	CB-CG-OD1	5.11	122.90	118.30
1	A	96	ASP	CB-CG-OD1	5.04	122.83	118.30

There are no chirality outliers.

All (2) planarity outliers are listed below:

Mol	Chain	Res	Type	Group
1	A	59	ARG	Sidechain
1	B	59	ARG	Sidechain

## 5.2 Too-close contacts [i](#)

In the following table, the Non-H and H(model) columns list the number of non-hydrogen atoms and hydrogen atoms in the chain respectively. The H(added) column lists the number of hydrogen atoms added and optimized by MolProbity. The Clashes column lists the number of clashes within the asymmetric unit, whereas Symm-Clashes lists symmetry related clashes.

Mol	Chain	Non-H	H(model)	H(added)	Clashes	Symm-Clashes
1	A	3202	0	3210	20	0
1	B	3168	0	3165	20	0
2	A	43	0	30	0	0
2	B	43	0	30	1	0
3	A	15	0	9	1	0
3	B	15	0	9	0	0
4	A	6	0	8	0	0
4	B	6	0	8	0	0

*Continued on next page...*

*Continued from previous page...*

Mol	Chain	Non-H	H(model)	H(added)	Clashes	Symm-Clashes
5	B	1	0	0	0	0
6	A	485	0	0	9	0
6	B	495	0	0	6	0
All	All	7479	0	6469	41	0

The all-atom clashscore is defined as the number of clashes found per 1000 atoms (including hydrogen atoms). The all-atom clashscore for this structure is 3.

All (41) close contacts within the same asymmetric unit are listed below, sorted by their clash magnitude.

Atom-1	Atom-2	Interatomic distance (Å)	Clash overlap (Å)
1:B:79:PHE:O	1:B:83[B]:THR:HG22	1.63	0.99
1:B:267[B]:ARG:CG	1:B:267[B]:ARG:HH21	1.80	0.94
1:A:69:PRO:O	6:A:601:HOH:O	1.91	0.87
1:B:267[B]:ARG:HG3	1:B:267[B]:ARG:HH21	1.42	0.82
1:B:267[B]:ARG:NH2	6:B:601:HOH:O	2.11	0.81
1:B:342:PRO:HB3	6:B:999:HOH:O	1.81	0.81
1:A:120:LYS:HE2	6:A:1000:HOH:O	1.85	0.74
1:A:293:ASN:HD21	3:A:502:TRP:N	1.93	0.66
1:A:233:GLU:HG3	6:A:955:HOH:O	1.99	0.60
1:B:267[B]:ARG:NH2	1:B:267[B]:ARG:HG3	2.13	0.58
1:B:267[B]:ARG:HG2	1:B:267[B]:ARG:HH21	1.63	0.58
1:A:108:ARG:O	1:A:112[B]:GLN:HG2	2.05	0.56
1:B:80:HIS:HA	1:B:83[B]:THR:CG2	2.37	0.54
1:B:406:ARG:HH11	1:B:406:ARG:HG3	1.73	0.53
1:A:112[B]:GLN:NE2	6:A:605:HOH:O	2.42	0.52
1:A:61:THR:OG1	6:A:602:HOH:O	2.18	0.51
1:B:342:PRO:CB	6:B:999:HOH:O	2.49	0.49
1:A:8:ALA:HB1	6:A:637:HOH:O	2.12	0.49
1:B:79:PHE:O	1:B:83[A]:THR:HG23	2.13	0.48
1:B:233:GLU:HG2	1:B:237:HIS:CD2	2.49	0.47
1:B:267[B]:ARG:HD3	6:B:908:HOH:O	2.15	0.47
1:B:129:ILE:HD11	1:B:142:LEU:HD21	1.96	0.47
1:B:84:LYS:HE2	6:B:863:HOH:O	2.15	0.46
1:A:150[A]:SER:HB3	6:A:859:HOH:O	2.16	0.46
1:B:174:THR:HB	1:B:183:PRO:HG2	1.99	0.45
1:A:81:ARG:NE	6:A:607:HOH:O	2.49	0.45
1:A:84:LYS:HE3	6:A:1022:HOH:O	2.17	0.45
1:A:155:PHE:CG	1:A:246:LEU:HD21	2.52	0.44
1:B:267[B]:ARG:NH2	1:B:267[B]:ARG:CG	2.53	0.44
1:A:155:PHE:CD1	1:A:246:LEU:HD21	2.52	0.44

*Continued on next page...*

*Continued from previous page...*

Atom-1	Atom-2	Interatomic distance (Å)	Clash overlap (Å)
2:B:501:HEM:HBB2	2:B:501:HEM:CMB	2.49	0.43
1:A:29:VAL:HA	1:A:39:ALA:O	2.18	0.43
1:A:79:PHE:O	1:A:83:THR:HG23	2.18	0.43
1:B:155:PHE:CD1	1:B:246:LEU:HD21	2.53	0.43
1:B:333:ARG:NH2	6:B:605:HOH:O	2.51	0.43
1:B:80:HIS:HA	1:B:83[B]:THR:HG22	2.01	0.42
1:A:306:MET:HB3	1:A:306:MET:HE3	1.89	0.41
1:A:131:ALA:O	1:A:406[A]:ARG:NH2	2.54	0.40
1:A:51:LYS:HE2	1:A:352:GLN:OE1	2.21	0.40

There are no symmetry-related clashes.

## 5.3 Torsion angles [i](#)

### 5.3.1 Protein backbone [i](#)

In the following table, the Percentiles column shows the percent Ramachandran outliers of the chain as a percentile score with respect to all X-ray entries followed by that with respect to entries of similar resolution.

The Analysed column shows the number of residues for which the backbone conformation was analysed, and the total number of residues.

Mol	Chain	Analysed	Favoured	Allowed	Outliers	Percentiles	
1	A	410/427 (96%)	404 (98%)	6 (2%)	0	100	100
1	B	407/427 (95%)	404 (99%)	3 (1%)	0	100	100
All	All	817/854 (96%)	808 (99%)	9 (1%)	0	100	100

There are no Ramachandran outliers to report.

### 5.3.2 Protein sidechains [i](#)

In the following table, the Percentiles column shows the percent sidechain outliers of the chain as a percentile score with respect to all X-ray entries followed by that with respect to entries of similar resolution.

The Analysed column shows the number of residues for which the sidechain conformation was analysed, and the total number of residues.

Mol	Chain	Analysed	Rotameric	Outliers	Percentiles	
1	A	341/352 (97%)	339 (99%)	2 (1%)	86	69
1	B	337/352 (96%)	333 (99%)	4 (1%)	71	43
All	All	678/704 (96%)	672 (99%)	6 (1%)	81	57

All (6) residues with a non-rotameric sidechain are listed below:

Mol	Chain	Res	Type
1	A	159	GLU
1	A	310	ARG
1	B	4	PRO
1	B	267[A]	ARG
1	B	267[B]	ARG
1	B	352	GLN

Some sidechains can be flipped to improve hydrogen bonding and reduce clashes. All (1) such sidechains are listed below:

Mol	Chain	Res	Type
1	B	293	ASN

### 5.3.3 RNA ⓘ

There are no RNA molecules in this entry.

## 5.4 Non-standard residues in protein, DNA, RNA chains ⓘ

There are no non-standard protein/DNA/RNA residues in this entry.

## 5.5 Carbohydrates ⓘ

There are no monosaccharides in this entry.

## 5.6 Ligand geometry ⓘ

Of 7 ligands modelled in this entry, 1 is monoatomic - leaving 6 for Mogul analysis.

In the following table, the Counts columns list the number of bonds (or angles) for which Mogul statistics could be retrieved, the number of bonds (or angles) that are observed in the model and the number of bonds (or angles) that are defined in the Chemical Component Dictionary. The Link column lists molecule types, if any, to which the group is linked. The Z score for a bond

length (or angle) is the number of standard deviations the observed value is removed from the expected value. A bond length (or angle) with  $|Z| > 2$  is considered an outlier worth inspection. RMSZ is the root-mean-square of all Z scores of the bond lengths (or angles).

Mol	Type	Chain	Res	Link	Bond lengths			Bond angles		
					Counts	RMSZ	# $ Z  > 2$	Counts	RMSZ	# $ Z  > 2$
4	GOL	B	503	-	5,5,5	0.74	0	5,5,5	0.46	0
3	TRP	A	502	-	12,16,16	1.31	2 (16%)	12,22,22	0.92	0
3	TRP	B	502	-	12,16,16	0.83	0	12,22,22	0.87	0
4	GOL	A	503	-	5,5,5	0.12	0	5,5,5	0.19	0
2	HEM	B	501	1,6	27,50,50	1.40	4 (14%)	17,82,82	1.92	6 (35%)
2	HEM	A	501	1	27,50,50	1.74	4 (14%)	17,82,82	2.12	5 (29%)

In the following table, the Chirals column lists the number of chiral outliers, the number of chiral centers analysed, the number of these observed in the model and the number defined in the Chemical Component Dictionary. Similar counts are reported in the Torsion and Rings columns. '-' means no outliers of that kind were identified.

Mol	Type	Chain	Res	Link	Chirals	Torsions	Rings
4	GOL	B	503	-	-	0/4/4/4	-
3	TRP	A	502	-	-	0/3/8/8	0/2/2/2
3	TRP	B	502	-	-	0/3/8/8	0/2/2/2
4	GOL	A	503	-	-	0/4/4/4	-
2	HEM	B	501	1,6	-	0/6/54/54	-
2	HEM	A	501	1	-	0/6/54/54	-

All (10) bond length outliers are listed below:

Mol	Chain	Res	Type	Atoms	Z	Observed(Å)	Ideal(Å)
2	A	501	HEM	CAD-C3D	-4.57	1.44	1.52
2	A	501	HEM	C4D-C3D	3.91	1.51	1.42
2	A	501	HEM	C4B-NB	-3.77	1.28	1.36
2	A	501	HEM	CAA-C2A	-3.65	1.46	1.52
2	B	501	HEM	C4D-C3D	3.52	1.50	1.42
3	A	502	TRP	CZ2-CE2	-3.03	1.36	1.41
2	B	501	HEM	C3C-C2C	-2.63	1.36	1.40
2	B	501	HEM	C1D-ND	2.28	1.40	1.36
3	A	502	TRP	CA-N	2.26	1.52	1.47
2	B	501	HEM	C4B-NB	-2.22	1.31	1.36

All (11) bond angle outliers are listed below:

Mol	Chain	Res	Type	Atoms	Z	Observed(°)	Ideal(°)
2	B	501	HEM	C1D-C2D-C3D	4.47	110.11	107.00

*Continued on next page...*

*Continued from previous page...*

Mol	Chain	Res	Type	Atoms	Z	Observed(°)	Ideal(°)
2	A	501	HEM	C4A-C3A-C2A	4.35	110.03	107.00
2	A	501	HEM	C1D-C2D-C3D	3.59	109.50	107.00
2	A	501	HEM	CMA-C3A-C4A	-3.55	123.00	128.46
2	B	501	HEM	CMD-C2D-C1D	-3.53	123.04	128.46
2	A	501	HEM	CMB-C2B-C3B	3.34	130.93	124.68
2	A	501	HEM	CMC-C2C-C3C	2.60	129.55	124.68
2	B	501	HEM	CMA-C3A-C4A	-2.57	124.51	128.46
2	B	501	HEM	C4A-C3A-C2A	2.56	108.78	107.00
2	B	501	HEM	CMB-C2B-C3B	2.35	129.08	124.68
2	B	501	HEM	CMC-C2C-C3C	2.11	128.62	124.68

There are no chirality outliers.

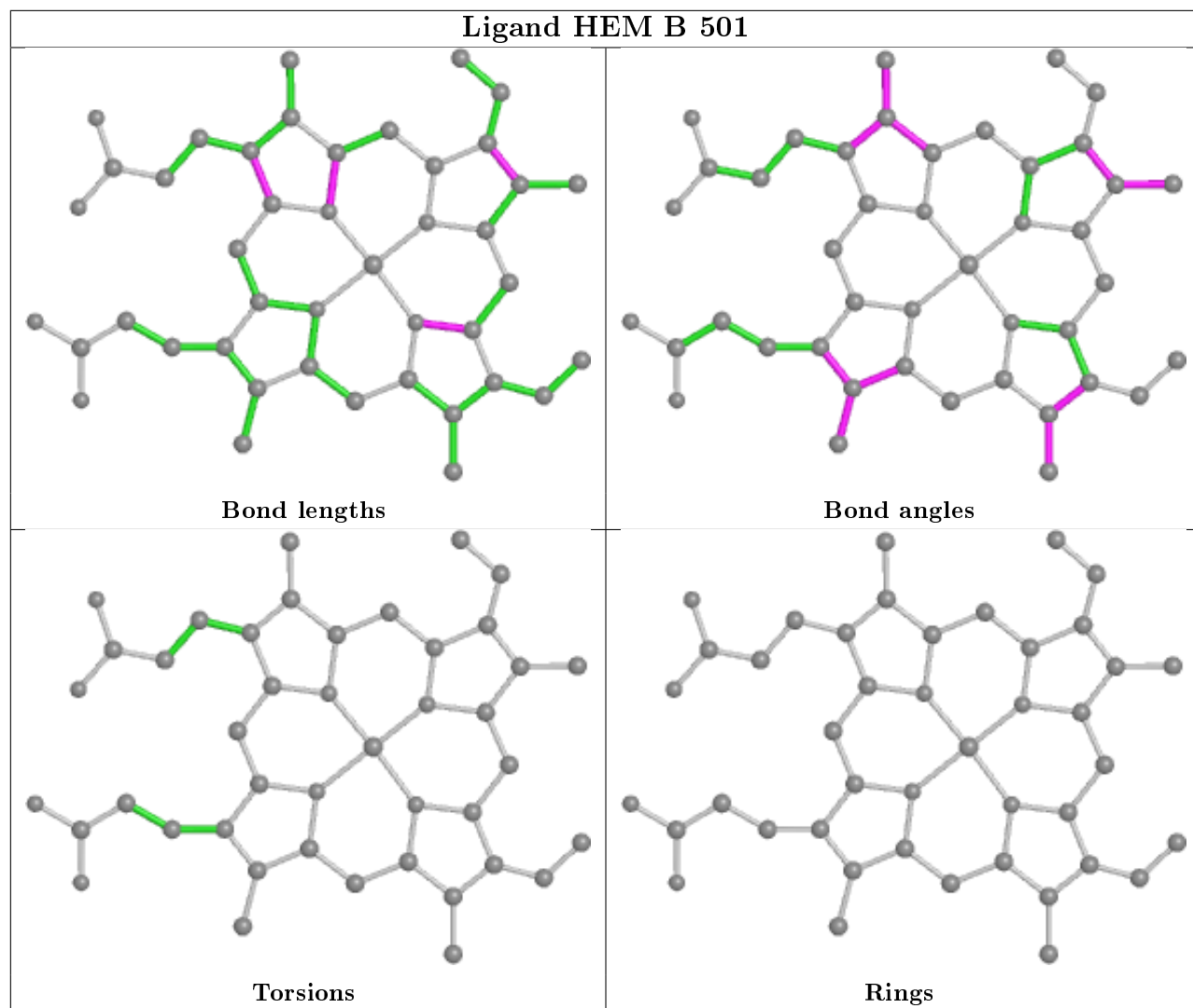
There are no torsion outliers.

There are no ring outliers.

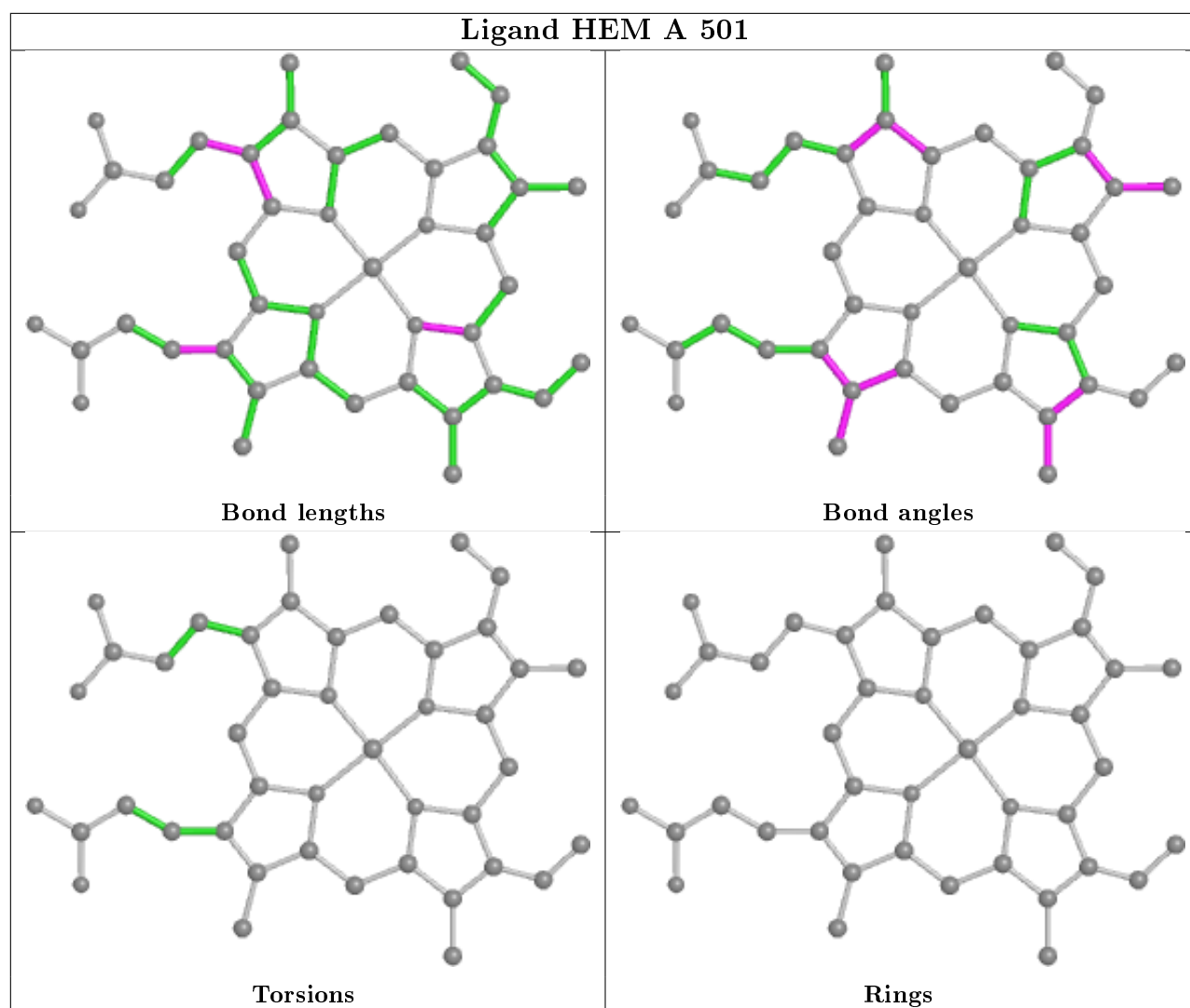
2 monomers are involved in 2 short contacts:

Mol	Chain	Res	Type	Clashes	Symm-Clashes
3	A	502	TRP	1	0
2	B	501	HEM	1	0

The following is a two-dimensional graphical depiction of Mogul quality analysis of bond lengths, bond angles, torsion angles, and ring geometry for all instances of the Ligand of Interest. In addition, ligands with molecular weight > 250 and outliers as shown on the validation Tables will also be included. For torsion angles, if less than 5% of the Mogul distribution of torsion angles is within 10 degrees of the torsion angle in question, then that torsion angle is considered an outlier. Any bond that is central to one or more torsion angles identified as an outlier by Mogul will be highlighted in the graph. For rings, the root-mean-square deviation (RMSD) between the ring in question and similar rings identified by Mogul is calculated over all ring torsion angles. If the average RMSD is greater than 60 degrees and the minimal RMSD between the ring in question and any Mogul-identified rings is also greater than 60 degrees, then that ring is considered an outlier. The outliers are highlighted in purple. The color gray indicates Mogul did not find sufficient equivalents in the CSD to analyse the geometry.







## 5.7 Other polymers [i](#)

There are no such residues in this entry.

## 5.8 Polymer linkage issues [i](#)

There are no chain breaks in this entry.

## 6 Fit of model and data [i](#)

### 6.1 Protein, DNA and RNA chains [i](#)

In the following table, the column labelled ‘#RSRZ> 2’ contains the number (and percentage) of RSRZ outliers, followed by percent RSRZ outliers for the chain as percentile scores relative to all X-ray entries and entries of similar resolution. The OWAB column contains the minimum, median, 95<sup>th</sup> percentile and maximum values of the occupancy-weighted average B-factor per residue. The column labelled ‘Q< 0.9’ lists the number of (and percentage) of residues with an average occupancy less than 0.9.

Mol	Chain	Analysed	<RSRZ>	#RSRZ>2	OWAB(Å <sup>2</sup> )	Q<0.9
1	A	403/427 (94%)	-0.26	3 (0%) 87 89	5, 10, 25, 43	0
1	B	403/427 (94%)	-0.24	3 (0%) 87 89	5, 10, 23, 44	0
All	All	806/854 (94%)	-0.25	6 (0%) 87 89	5, 10, 24, 44	0

All (6) RSRZ outliers are listed below:

Mol	Chain	Res	Type	RSRZ
1	A	133	ALA	3.7
1	A	131	ALA	3.1
1	A	4	PRO	2.5
1	B	228	THR	2.2
1	B	133	ALA	2.0
1	B	131	ALA	2.0

### 6.2 Non-standard residues in protein, DNA, RNA chains [i](#)

There are no non-standard protein/DNA/RNA residues in this entry.

### 6.3 Carbohydrates [i](#)

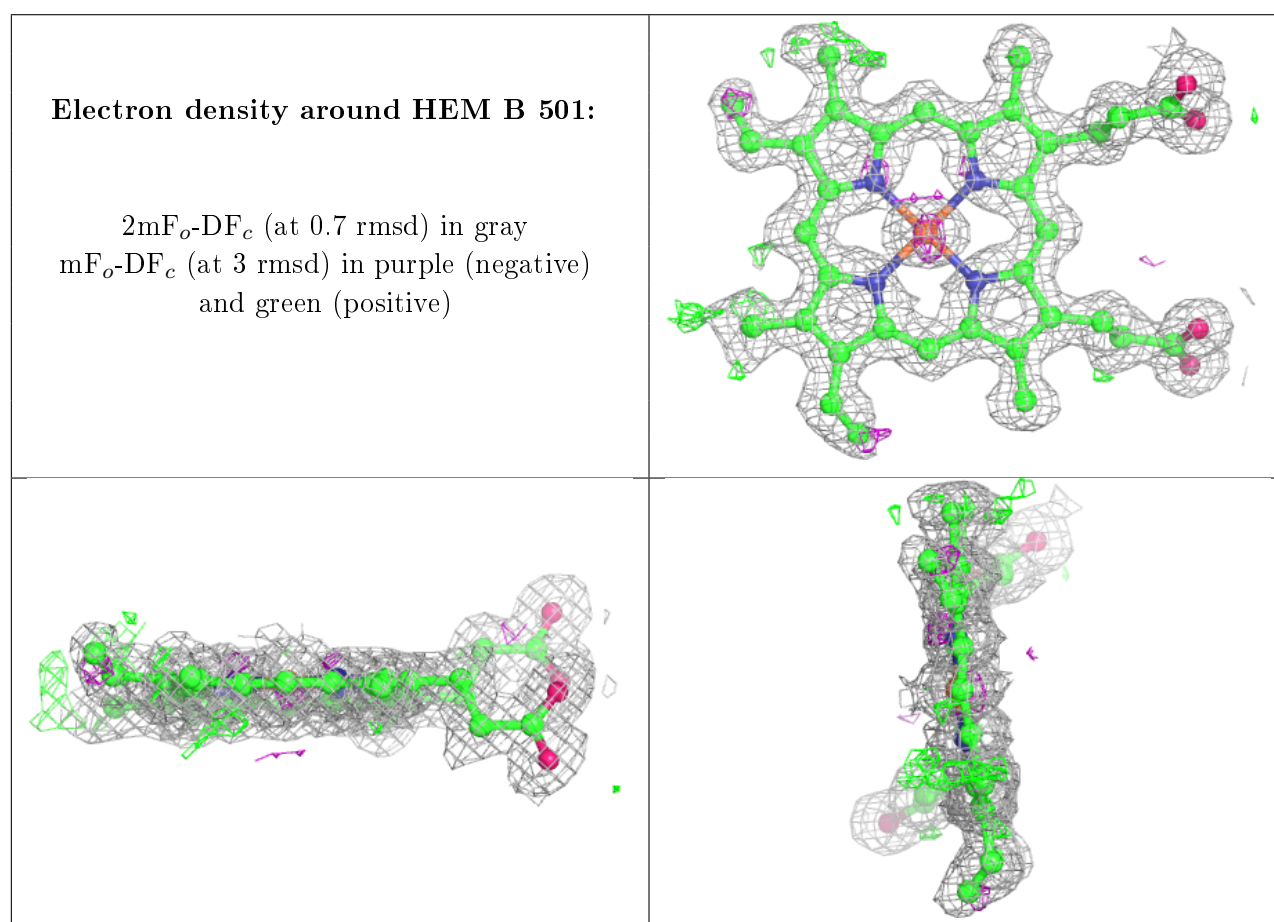
There are no monosaccharides in this entry.

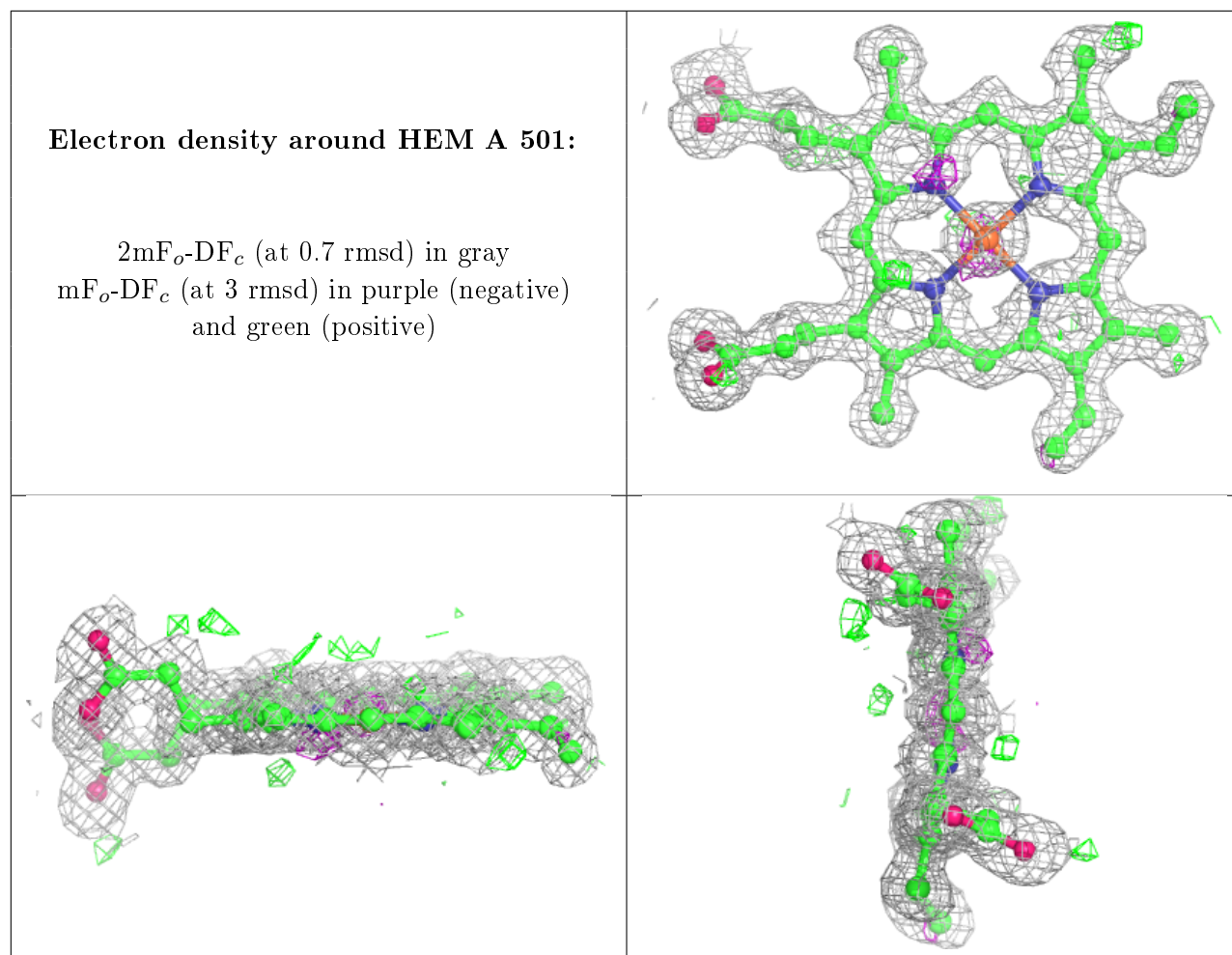
### 6.4 Ligands [i](#)

In the following table, the Atoms column lists the number of modelled atoms in the group and the number defined in the chemical component dictionary. The B-factors column lists the minimum, median, 95<sup>th</sup> percentile and maximum values of B factors of atoms in the group. The column labelled ‘Q< 0.9’ lists the number of atoms with occupancy less than 0.9.

Mol	Type	Chain	Res	Atoms	RSCC	RSR	B-factors( $\text{\AA}^2$ )	Q<0.9
3	TRP	A	502	15/15	0.94	0.11	5,6,8,9	0
4	GOL	B	503	6/6	0.97	0.09	10,13,22,29	0
3	TRP	B	502	15/15	0.98	0.10	4,6,7,8	0
4	GOL	A	503	6/6	0.98	0.06	13,15,16,17	0
2	HEM	B	501	43/43	0.98	0.09	5,6,9,14	0
2	HEM	A	501	43/43	0.99	0.08	5,6,9,13	0
5	CL	B	504	1/1	1.00	0.03	14,14,14,14	0

The following is a graphical depiction of the model fit to experimental electron density of all instances of the Ligand of Interest. In addition, ligands with molecular weight > 250 and outliers as shown on the geometry validation Tables will also be included. Each fit is shown from different orientation to approximate a three-dimensional view.





## 6.5 Other polymers [i](#)

There are no such residues in this entry.