



# Full wwPDB X-ray Structure Validation Report ⓘ

Aug 8, 2020 – 01:12 AM BST

PDB ID : 5D5A  
Title : In meso in situ serial X-ray crystallography structure of the Beta2-adrenergic receptor at 100 K  
Authors : Huang, C.-Y.; Olieric, V.; Warshamanage, R.; Liu, X.; Kobilka, B.; Kay Diederichs, K.; Wang, M.; Caffrey, M.  
Deposited on : 2015-08-10  
Resolution : 2.48 Å(reported)

This is a Full wwPDB X-ray Structure Validation Report for a publicly released PDB entry.

We welcome your comments at [validation@mail.wwpdb.org](mailto:validation@mail.wwpdb.org)

A user guide is available at

<https://www.wwpdb.org/validation/2017/XrayValidationReportHelp>

with specific help available everywhere you see the ⓘ symbol.

---

The following versions of software and data (see [references ⓘ](#)) were used in the production of this report:

MolProbity : 4.02b-467  
Mogul : 1.8.5 (274361), CSD as541be (2020)  
Xtriage (Phenix) : 1.13  
EDS : 2.13.1  
buster-report : 1.1.7 (2018)  
Percentile statistics : 20191225.v01 (using entries in the PDB archive December 25th 2019)  
Refmac : 5.8.0158  
CCP4 : 7.0.044 (Gargrove)  
Ideal geometry (proteins) : Engh & Huber (2001)  
Ideal geometry (DNA, RNA) : Parkinson et al. (1996)  
Validation Pipeline (wwPDB-VP) : 2.13.1

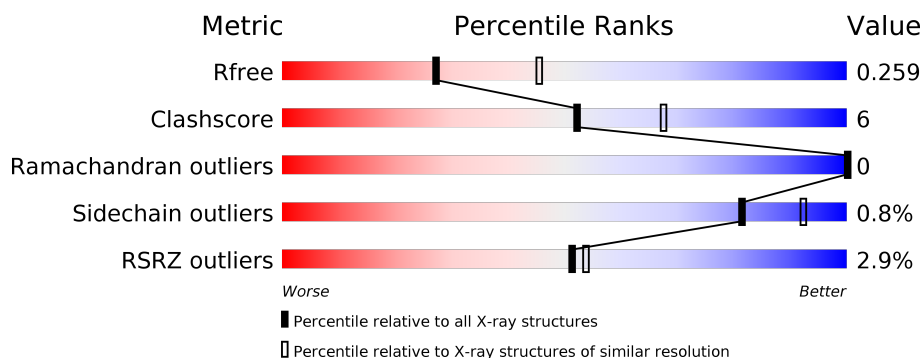
# 1 Overall quality at a glance

The following experimental techniques were used to determine the structure:

*X-RAY DIFFRACTION*



The reported resolution of this entry is 2.48 Å.

Percentile scores (ranging between 0-100) for global validation metrics of the entry are shown in the following graphic. The table shows the number of entries on which the scores are based.



Metric	Whole archive (#Entries)	Similar resolution (#Entries, resolution range(Å))
$R_{free}$	130704	5857 (2.50-2.46)
Clashscore	141614	6594 (2.50-2.46)
Ramachandran outliers	138981	6469 (2.50-2.46)
Sidechain outliers	138945	6471 (2.50-2.46)
RSRZ outliers	127900	5738 (2.50-2.46)

The table below summarises the geometric issues observed across the polymeric chains and their fit to the electron density. The red, orange, yellow and green segments on the lower bar indicate the fraction of residues that contain outliers for  $\geq 3$ , 2, 1 and 0 types of geometric quality criteria respectively. A grey segment represents the fraction of residues that are not modelled. The numeric value for each fraction is indicated below the corresponding segment, with a dot representing fractions  $\leq 5\%$ . The upper red bar (where present) indicates the fraction of residues that have poor fit to the electron density. The numeric value is given above the bar.

Mol	Chain	Length	Quality of chain
1	A	500	
2	B	2	

The following table lists non-polymeric compounds, carbohydrate monomers and non-standard residues in protein, DNA, RNA chains that are outliers for geometric or electron-density-fit criteria:

Mol	Type	Chain	Res	Chirality	Geometry	Clashes	Electron density
2	BGC	B	1	-	-	-	X
7	PLM	A	1209	-	-	-	X

## 2 Entry composition

There are 10 unique types of molecules in this entry. The entry contains 3809 atoms, of which 0 are hydrogens and 0 are deuteriums.

In the tables below, the ZeroOcc column contains the number of atoms modelled with zero occupancy, the AltConf column contains the number of residues with at least one atom in alternate conformation and the Trace column contains the number of residues modelled with at most 2 atoms.

- Molecule 1 is a protein called Beta-2 adrenergic receptor,Endolysin,Beta-2 adrenergic receptor.

Mol	Chain	Residues	Atoms					ZeroOcc	AltConf	Trace
1	A	442	Total	C	N	O	S	0	0	0
			3546	2316	590	616	24			

There are 14 discrepancies between the modelled and reference sequences:

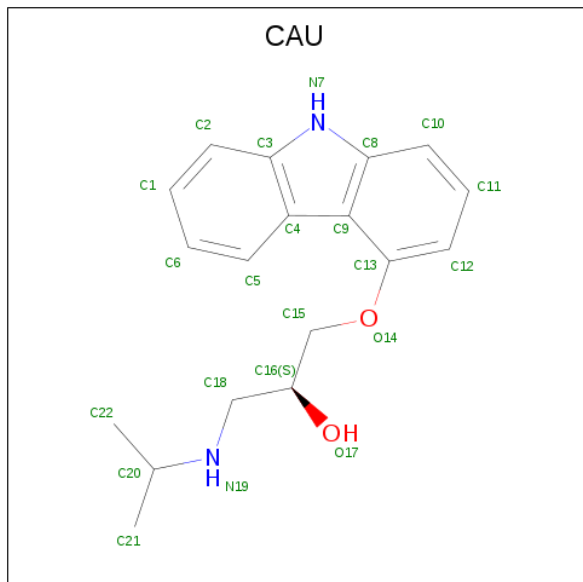
Chain	Residue	Modelled	Actual	Comment	Reference
A	-6	ASP	-	expression tag	UNP P07550
A	-5	TYR	-	expression tag	UNP P07550
A	-4	LYS	-	expression tag	UNP P07550
A	-3	ASP	-	expression tag	UNP P07550
A	-2	ASP	-	expression tag	UNP P07550
A	-1	ASP	-	expression tag	UNP P07550
A	0	ALA	-	expression tag	UNP P07550
A	16	ARG	GLY	conflict	UNP P07550
A	27	GLN	GLU	conflict	UNP P07550
A	187	GLU	ASN	engineered mutation	UNP P07550
A	1012	GLY	ARG	conflict	UNP P00720
A	1054	THR	CYS	engineered mutation	UNP P00720
A	1097	ALA	CYS	engineered mutation	UNP P00720
A	1137	ARG	ILE	conflict	UNP P00720

- Molecule 2 is an oligosaccharide called alpha-D-glucopyranose-(1-4)-beta-D-glucopyranose.



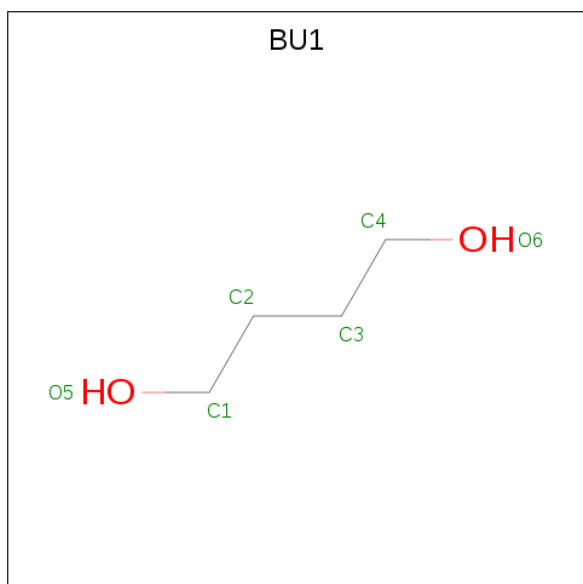
Mol	Chain	Residues	Atoms			ZeroOcc	AltConf	Trace
2	B	2	Total	C	O	0	0	0
			23	12	11			

- Molecule 3 is (2S)-1-(9H-Carbazol-4-yloxy)-3-(isopropylamino)propan-2-ol (three-letter code: CAU) (formula:  $C_{18}H_{22}N_2O_2$ ).



Mol	Chain	Residues	Atoms				ZeroOcc	AltConf
3	A	1	Total	C	N	O	0	0
			22	18	2	2		

- Molecule 4 is 1,4-BUTANEDIOL (three-letter code: BU1) (formula:  $C_4H_{10}O_2$ ).



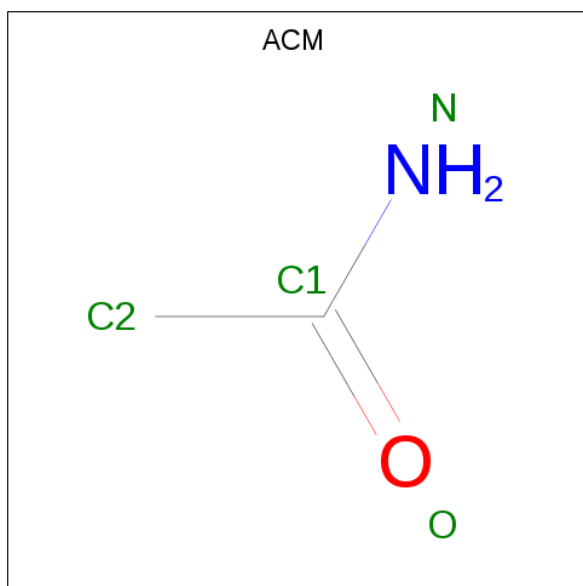
Mol	Chain	Residues	Atoms			ZeroOcc	AltConf
4	A	1	Total	C	O	0	0
			6	4	2		

*Continued on next page...*

*Continued from previous page...*

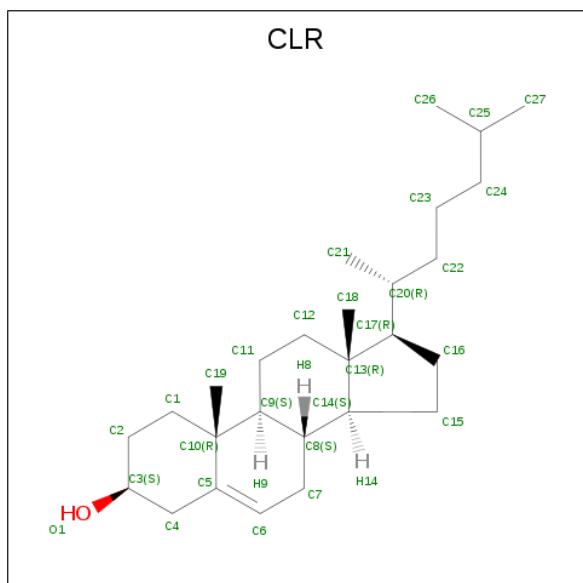
Mol	Chain	Residues	Atoms			ZeroOcc	AltConf
4	A	1	Total	C	O	0	0
			6	4	2		

- Molecule 5 is ACETAMIDE (three-letter code: ACM) (formula:  $C_2H_5NO$ ).



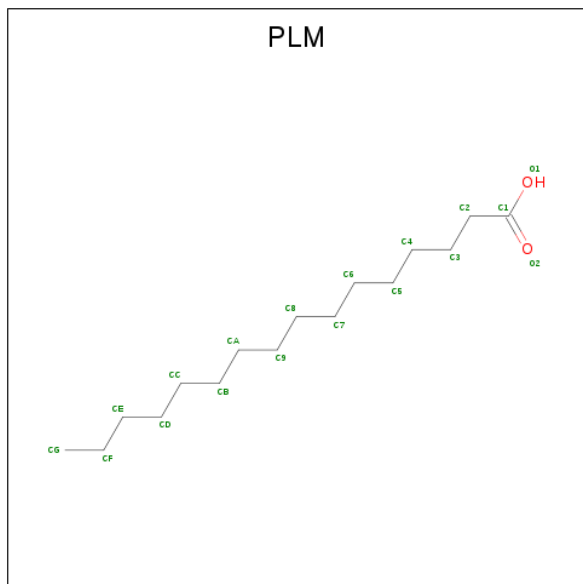
Mol	Chain	Residues	Atoms				ZeroOcc	AltConf
5	A	1	Total	C	N	O	0	0
			4	2	1	1		

- Molecule 6 is CHOLESTEROL (three-letter code: CLR) (formula:  $C_{27}H_{46}O$ ).



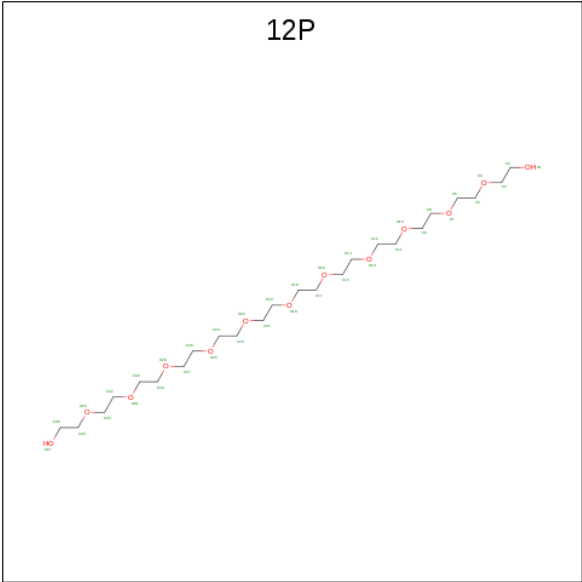
Mol	Chain	Residues	Atoms			ZeroOcc	AltConf
6	A	1	Total	C	O	0	0
			28	27	1		
6	A	1	Total	C	O	0	0
			28	27	1		
6	A	1	Total	C	O	0	0
			28	27	1		

- Molecule 7 is PALMITIC ACID (three-letter code: PLM) (formula:  $C_{16}H_{32}O_2$ ).



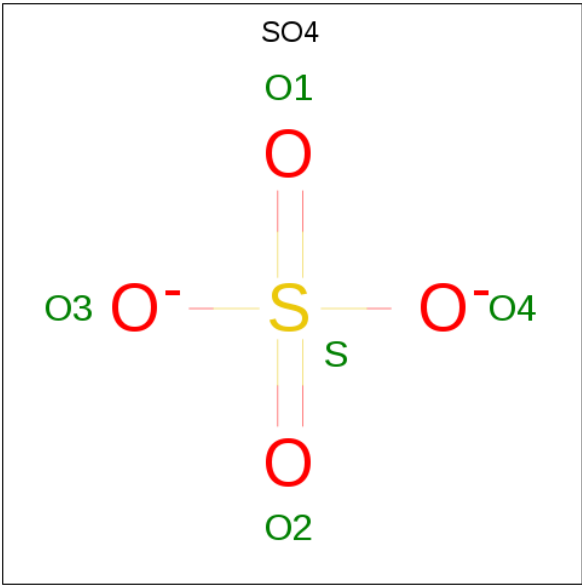
Mol	Chain	Residues	Atoms			ZeroOcc	AltConf
7	A	1	Total	C	O	0	0
			17	16	1		

- Molecule 8 is DODECAETHYLENE GLYCOL (three-letter code: 12P) (formula:  $C_{24}H_{50}O_{13}$ ).



Mol	Chain	Residues	Atoms			ZeroOcc	AltConf
8	A	1	Total	C	O	0	0
			18	12	6		

- Molecule 9 is SULFATE ION (three-letter code: SO4) (formula: O<sub>4</sub>S).



Mol	Chain	Residues	Atoms			ZeroOcc	AltConf
9	A	1	Total	O	S	0	0
			5	4	1		
9	A	1	Total	O	S	0	0
			5	4	1		
9	A	1	Total	O	S	0	0
			5	4	1		

Continued on next page...



*Continued from previous page...*

Mol	Chain	Residues	Atoms			ZeroOcc	AltConf
9	A	1	Total	O	S	0	0
			5	4	1		
9	A	1	Total	O	S	0	0
			5	4	1		
9	A	1	Total	O	S	0	0
			5	4	1		

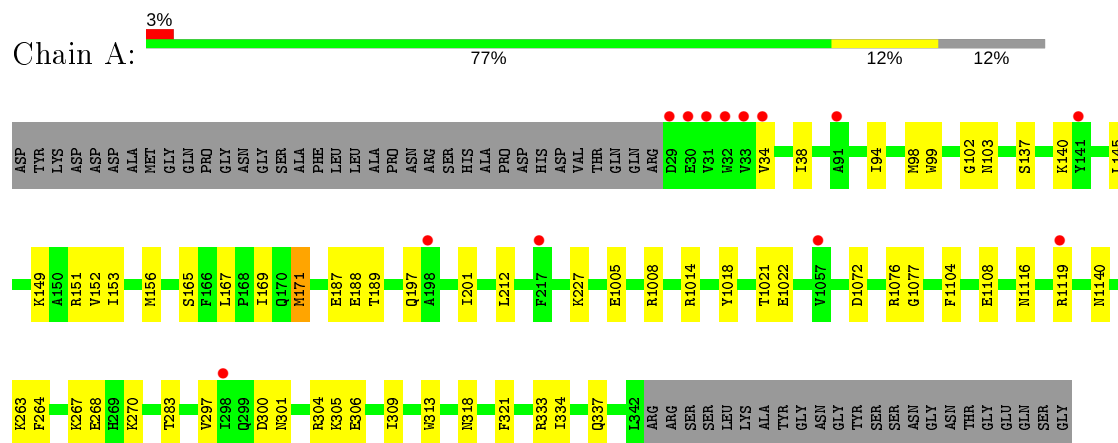
- Molecule 10 is water.

Mol	Chain	Residues	Atoms		ZeroOcc	AltConf
10	A	53	Total	O	0	0
			53	53		

### 3 Residue-property plots [i](#)

These plots are drawn for all protein, RNA, DNA and oligosaccharide chains in the entry. The first graphic for a chain summarises the proportions of the various outlier classes displayed in the second graphic. The second graphic shows the sequence view annotated by issues in geometry and electron density. Residues are color-coded according to the number of geometric quality criteria for which they contain at least one outlier: green = 0, yellow = 1, orange = 2 and red = 3 or more. A red dot above a residue indicates a poor fit to the electron density ( $RSRZ > 2$ ). Stretches of 2 or more consecutive residues without any outlier are shown as a green connector. Residues present in the sample, but not in the model, are shown in grey.

- Molecule 1: Beta-2 adrenergic receptor,Endolysin,Beta-2 adrenergic receptor



- Molecule 2: alpha-D-glucopyranose-(1-4)-beta-D-glucopyranose



## 4 Data and refinement statistics

Property	Value	Source
Space group	C 1 2 1	Depositor
Cell constants a, b, c, $\alpha$ , $\beta$ , $\gamma$	107.00 Å 170.00 Å 40.50 Å 90.00° 106.25° 90.00°	Depositor
Resolution (Å)	43.96 – 2.48 43.96 – 2.48	Depositor EDS
% Data completeness (in resolution range)	94.3 (43.96-2.48) 94.3 (43.96-2.48)	Depositor EDS
$R_{merge}$	(Not available)	Depositor
$R_{sym}$	(Not available)	Depositor
$\langle I/\sigma(I) \rangle$ <sup>1</sup>	1.04 (at 2.48 Å)	Xtriage
Refinement program	PHENIX 1.9_1690	Depositor
R, $R_{free}$	0.212 , 0.262 0.214 , 0.259	Depositor DCC
$R_{free}$ test set	1155 reflections (5.00%)	wwPDB-VP
Wilson B-factor (Å <sup>2</sup> )	55.0	Xtriage
Anisotropy	0.311	Xtriage
Bulk solvent $k_{sol}$ (e/Å <sup>3</sup> ), $B_{sol}$ (Å <sup>2</sup> )	0.32 , 54.9	EDS
L-test for twinning <sup>2</sup>	$\langle  L  \rangle = 0.49$ , $\langle L^2 \rangle = 0.32$	Xtriage
Estimated twinning fraction	0.000 for 1/2*h+1/2*k+l,3/2*h-1/2*k+l,-l 0.007 for 1/2*h-1/2*k+l,-3/2*h-1/2*k-l,-l	Xtriage
$F_o, F_c$ correlation	0.93	EDS
Total number of atoms	3809	wwPDB-VP
Average B, all atoms (Å <sup>2</sup> )	65.0	wwPDB-VP

Xtriage's analysis on translational NCS is as follows: *The largest off-origin peak in the Patterson function is 5.54% of the height of the origin peak. No significant pseudotranslation is detected.*

<sup>1</sup>Intensities estimated from amplitudes.

<sup>2</sup>Theoretical values of  $\langle |L| \rangle$ ,  $\langle L^2 \rangle$  for acentric reflections are 0.5, 0.333 respectively for untwinned datasets, and 0.375, 0.2 for perfectly twinned datasets.

## 5 Model quality [i](#)

### 5.1 Standard geometry [i](#)

Bond lengths and bond angles in the following residue types are not validated in this section: BU1, GLC, CAU, 12P, BGC, ACM, PLM, CLR, SO4

The Z score for a bond length (or angle) is the number of standard deviations the observed value is removed from the expected value. A bond length (or angle) with  $|Z| > 5$  is considered an outlier worth inspection. RMSZ is the root-mean-square of all Z scores of the bond lengths (or angles).

Mol	Chain	Bond lengths		Bond angles	
		RMSZ	$\# Z  > 5$	RMSZ	$\# Z  > 5$
1	A	0.24	0/3627	0.40	0/4924

There are no bond length outliers.

There are no bond angle outliers.

There are no chirality outliers.

There are no planarity outliers.

### 5.2 Too-close contacts [i](#)

In the following table, the Non-H and H(model) columns list the number of non-hydrogen atoms and hydrogen atoms in the chain respectively. The H(added) column lists the number of hydrogen atoms added and optimized by MolProbity. The Clashes column lists the number of clashes within the asymmetric unit, whereas Symm-Clashes lists symmetry related clashes.

Mol	Chain	Non-H	H(model)	H(added)	Clashes	Symm-Clashes
1	A	3546	0	3612	38	0
2	B	23	0	20	1	0
3	A	22	0	22	0	0
4	A	12	0	20	3	0
5	A	4	0	3	0	0
6	A	84	0	120	5	0
7	A	17	0	31	0	0
8	A	18	0	20	1	0
9	A	30	0	0	2	0
10	A	53	0	0	1	0
All	All	3809	0	3848	42	0

The all-atom clashscore is defined as the number of clashes found per 1000 atoms (including hydrogen atoms). The all-atom clashscore for this structure is 6.

All (42) close contacts within the same asymmetric unit are listed below, sorted by their clash magnitude.

Atom-1	Atom-2	Interatomic distance (Å)	Clash overlap (Å)
1:A:1021:THR:OG1	1:A:1022:GLU:OE2	1.97	0.80
6:A:1206:CLR:H183	6:A:1208:CLR:H151	1.82	0.61
1:A:187:GLU:HG3	1:A:189:THR:H	1.66	0.61
1:A:270:LYS:NZ	9:A:1212:SO4:O1	2.35	0.60
1:A:333:ARG:O	1:A:337:GLN:HG3	2.08	0.53
1:A:1116:ASN:HA	1:A:1119:ARG:NH1	2.25	0.52
1:A:1072:ASP:OD2	1:A:1076:ARG:NH1	2.43	0.51
1:A:300:ASP:OD1	1:A:301:ASN:N	2.44	0.50
1:A:197:GLN:HG2	1:A:297:VAL:HG13	1.93	0.50
1:A:1014:ARG:HD3	1:A:1018:TYR:CE1	2.47	0.50
1:A:304:ARG:NH1	1:A:306:GLU:OE2	2.42	0.50
1:A:165:SER:O	1:A:169:ILE:HD12	2.13	0.48
1:A:149:LYS:O	1:A:153:ILE:HG12	2.14	0.47
1:A:212:LEU:HD11	1:A:283:THR:HG23	1.94	0.47
1:A:1104:PHE:O	2:B:1:BGC:H4	2.15	0.47
1:A:152:VAL:O	1:A:156:MET:HG3	2.15	0.47
1:A:34:VAL:O	1:A:38:ILE:HG12	2.15	0.46
1:A:1072:ASP:OD2	1:A:1076:ARG:NH2	2.48	0.45
1:A:167:LEU:O	1:A:171:MET:HB2	2.16	0.45
1:A:1072:ASP:OD2	1:A:1076:ARG:CZ	2.64	0.45
1:A:99:TRP:NE1	1:A:102:GLY:O	2.48	0.44
1:A:1005:GLU:OE1	1:A:1008:ARG:NH1	2.49	0.44
1:A:103:ASN:ND2	1:A:188:GLU:HA	2.33	0.44
1:A:227:LYS:NZ	10:A:1311:HOH:O	2.51	0.43
1:A:145:LEU:HA	1:A:149:LYS:HE2	2.01	0.43
1:A:201:ILE:HD11	1:A:297:VAL:HG11	2.01	0.42
1:A:94:ILE:HD11	1:A:313:TRP:HE1	1.85	0.42
6:A:1206:CLR:H222	6:A:1206:CLR:H161	1.96	0.42
1:A:1116:ASN:HB2	9:A:1213:SO4:O3	2.19	0.42
1:A:1077:GLY:HA3	1:A:1108:GLU:OE2	2.20	0.41
6:A:1208:CLR:H211	6:A:1208:CLR:H232	1.79	0.41
1:A:227:LYS:HB2	4:A:1203:BU1:H42	2.01	0.41
1:A:305:LYS:HE2	1:A:309:ILE:HD11	2.03	0.41
1:A:267:LYS:HG3	1:A:268:GLU:N	2.35	0.41
1:A:98:MET:HB2	1:A:189:THR:HG22	2.01	0.41
1:A:318:ASN:HA	1:A:321:PHE:CD2	2.55	0.41
1:A:137:SER:O	1:A:140:LYS:HG2	2.21	0.41
1:A:264:PHE:CZ	4:A:1203:BU1:H32	2.56	0.41
1:A:1072:ASP:OD1	8:A:1210:12P:H211	2.21	0.41
1:A:263:LYS:HE3	4:A:1203:BU1:H41	2.02	0.40

*Continued on next page...*

*Continued from previous page...*

Atom-1	Atom-2	Interatomic distance (Å)	Clash overlap (Å)
1:A:151:ARG:HG2	6:A:1206:CLR:H41	2.04	0.40
6:A:1208:CLR:H162	6:A:1208:CLR:H222	1.71	0.40

There are no symmetry-related clashes.

## 5.3 Torsion angles [i](#)

### 5.3.1 Protein backbone [i](#)

In the following table, the Percentiles column shows the percent Ramachandran outliers of the chain as a percentile score with respect to all X-ray entries followed by that with respect to entries of similar resolution.

The Analysed column shows the number of residues for which the backbone conformation was analysed, and the total number of residues.

Mol	Chain	Analysed	Favoured	Allowed	Outliers	Percentiles	
1	A	440/500 (88%)	434 (99%)	6 (1%)	0	100	100

There are no Ramachandran outliers to report.

### 5.3.2 Protein sidechains [i](#)

In the following table, the Percentiles column shows the percent sidechain outliers of the chain as a percentile score with respect to all X-ray entries followed by that with respect to entries of similar resolution.

The Analysed column shows the number of residues for which the sidechain conformation was analysed, and the total number of residues.

Mol	Chain	Analysed	Rotameric	Outliers	Percentiles	
1	A	383/428 (90%)	380 (99%)	3 (1%)	81	92

All (3) residues with a non-rotameric sidechain are listed below:

Mol	Chain	Res	Type
1	A	171	MET
1	A	1140	ASN
1	A	334	ILE

Some sidechains can be flipped to improve hydrogen bonding and reduce clashes. All (2) such sidechains are listed below:

Mol	Chain	Res	Type
1	A	103	ASN
1	A	1140	ASN

### 5.3.3 RNA ⓘ

There are no RNA molecules in this entry.

## 5.4 Non-standard residues in protein, DNA, RNA chains ⓘ

There are no non-standard protein/DNA/RNA residues in this entry.

## 5.5 Carbohydrates ⓘ

2 monosaccharides are modelled in this entry.

In the following table, the Counts columns list the number of bonds (or angles) for which Mogul statistics could be retrieved, the number of bonds (or angles) that are observed in the model and the number of bonds (or angles) that are defined in the Chemical Component Dictionary. The Link column lists molecule types, if any, to which the group is linked. The Z score for a bond length (or angle) is the number of standard deviations the observed value is removed from the expected value. A bond length (or angle) with  $|Z| > 2$  is considered an outlier worth inspection. RMSZ is the root-mean-square of all Z scores of the bond lengths (or angles).

Mol	Type	Chain	Res	Link	Bond lengths			Bond angles		
					Counts	RMSZ	# $ Z  > 2$	Counts	RMSZ	# $ Z  > 2$
2	BGC	B	1	2	12,12,12	1.63	2 (16%)	17,17,17	1.46	2 (11%)
2	GLC	B	2	2	11,11,12	1.43	2 (18%)	15,15,17	3.36	7 (46%)

In the following table, the Chirals column lists the number of chiral outliers, the number of chiral centers analysed, the number of these observed in the model and the number defined in the Chemical Component Dictionary. Similar counts are reported in the Torsion and Rings columns. '-' means no outliers of that kind were identified.

Mol	Type	Chain	Res	Link	Chirals	Torsions	Rings
2	BGC	B	1	2	-	2/2/22/22	0/1/1/1
2	GLC	B	2	2	-	2/2/19/22	0/1/1/1

All (4) bond length outliers are listed below:

Mol	Chain	Res	Type	Atoms	Z	Observed(Å)	Ideal(Å)
2	B	1	BGC	O6-C6	-4.55	1.23	1.42
2	B	2	GLC	O2-C2	3.57	1.50	1.43
2	B	1	BGC	O4-C4	2.31	1.48	1.43
2	B	2	GLC	O5-C5	2.15	1.47	1.43

All (9) bond angle outliers are listed below:

Mol	Chain	Res	Type	Atoms	Z	Observed(°)	Ideal(°)
2	B	2	GLC	O5-C1-C2	-8.00	98.41	110.77
2	B	2	GLC	C2-C3-C4	-7.08	98.64	110.89
2	B	2	GLC	C1-O5-C5	4.16	117.83	112.19
2	B	1	BGC	O3-C3-C2	-3.64	101.93	110.35
2	B	2	GLC	O2-C2-C1	2.99	115.27	109.15
2	B	2	GLC	C1-C2-C3	2.85	113.17	109.67
2	B	2	GLC	O5-C5-C6	2.25	110.73	107.20
2	B	2	GLC	O5-C5-C4	2.11	115.95	110.83
2	B	1	BGC	C1-C2-C3	2.06	114.58	110.31

There are no chirality outliers.

All (4) torsion outliers are listed below:

Mol	Chain	Res	Type	Atoms
2	B	1	BGC	O5-C5-C6-O6
2	B	2	GLC	O5-C5-C6-O6
2	B	1	BGC	C4-C5-C6-O6
2	B	2	GLC	C4-C5-C6-O6

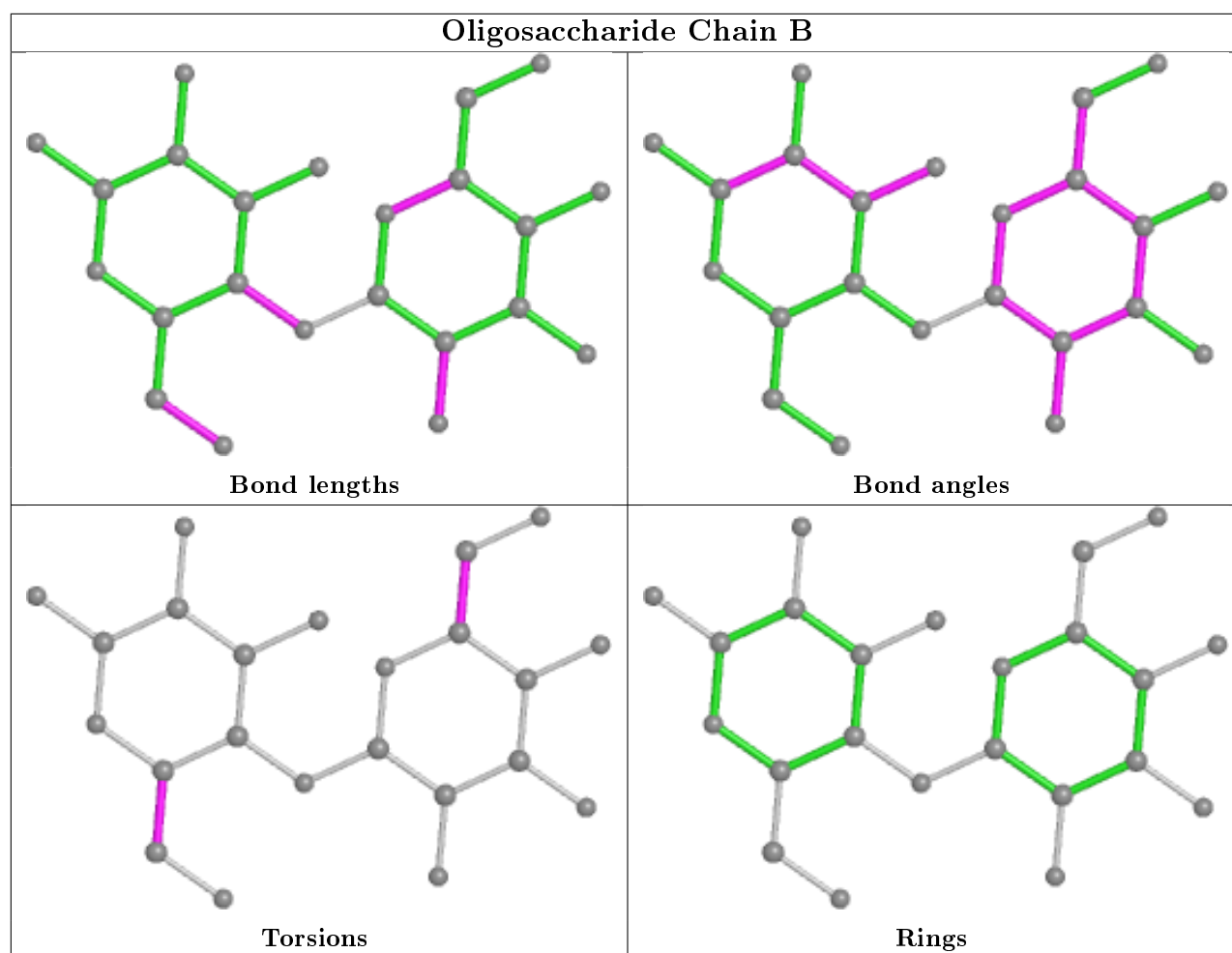
There are no ring outliers.

1 monomer is involved in 1 short contact:

Mol	Chain	Res	Type	Clashes	Symm-Clashes
2	B	1	BGC	1	0

The following is a two-dimensional graphical depiction of Mogul quality analysis of bond lengths, bond angles, torsion angles, and ring geometry for oligosaccharide.





## 5.6 Ligand geometry [i](#)

15 ligands are modelled in this entry.

In the following table, the Counts columns list the number of bonds (or angles) for which Mogul statistics could be retrieved, the number of bonds (or angles) that are observed in the model and the number of bonds (or angles) that are defined in the Chemical Component Dictionary. The Link column lists molecule types, if any, to which the group is linked. The Z score for a bond length (or angle) is the number of standard deviations the observed value is removed from the expected value. A bond length (or angle) with  $|Z| > 2$  is considered an outlier worth inspection. RMSZ is the root-mean-square of all Z scores of the bond lengths (or angles).

Mol	Type	Chain	Res	Link	Bond lengths			Bond angles		
					Counts	RMSZ	$\# Z  > 2$	Counts	RMSZ	$\# Z  > 2$
5	ACM	A	1205	1	3,3,3	1.06	0	3,3,3	0.25	0
6	CLR	A	1208	-	31,31,31	6.93	17 (54%)	48,48,48	2.31	18 (37%)
4	BU1	A	1204	-	5,5,5	0.12	0	4,4,4	0.53	0
4	BU1	A	1203	-	5,5,5	0.12	0	4,4,4	0.55	0
9	SO4	A	1213	-	4,4,4	0.14	0	6,6,6	0.07	0

Mol	Type	Chain	Res	Link	Bond lengths			Bond angles		
					Counts	RMSZ	# Z  > 2	Counts	RMSZ	# Z  > 2
3	CAU	A	1202	-	22,24,24	0.89	1 (4%)	31,33,33	1.11	2 (6%)
7	PLM	A	1209	1	16,16,17	0.24	0	15,15,17	1.97	1 (6%)
9	SO4	A	1214	-	4,4,4	0.13	0	6,6,6	0.05	0
9	SO4	A	1215	-	4,4,4	0.13	0	6,6,6	0.05	0
6	CLR	A	1206	-	31,31,31	6.93	17 (54%)	48,48,48	2.11	14 (29%)
8	12P	A	1210	-	17,17,36	0.71	0	16,16,35	0.22	0
9	SO4	A	1212	-	4,4,4	0.14	0	6,6,6	0.04	0
9	SO4	A	1216	-	4,4,4	0.14	0	6,6,6	0.04	0
9	SO4	A	1211	-	4,4,4	0.14	0	6,6,6	0.05	0
6	CLR	A	1207	-	31,31,31	6.94	16 (51%)	48,48,48	2.36	18 (37%)

In the following table, the Chirals column lists the number of chiral outliers, the number of chiral centers analysed, the number of these observed in the model and the number defined in the Chemical Component Dictionary. Similar counts are reported in the Torsion and Rings columns. '-' means no outliers of that kind were identified.

Mol	Type	Chain	Res	Link	Chirals	Torsions	Rings
6	CLR	A	1208	-	-	5/10/68/68	0/4/4/4
4	BU1	A	1204	-	-	1/3/3/3	-
4	BU1	A	1203	-	-	2/3/3/3	-
3	CAU	A	1202	-	-	2/10/10/10	0/3/3/3
7	PLM	A	1209	1	-	6/13/14/15	-
6	CLR	A	1206	-	-	4/10/68/68	0/4/4/4
8	12P	A	1210	-	-	9/15/15/34	-
6	CLR	A	1207	-	-	0/10/68/68	0/4/4/4

All (51) bond length outliers are listed below:

Mol	Chain	Res	Type	Atoms	Z	Observed(Å)	Ideal(Å)
6	A	1208	CLR	C8-C14	-21.80	1.12	1.53
6	A	1207	CLR	C8-C14	-21.77	1.12	1.53
6	A	1206	CLR	C8-C14	-21.57	1.12	1.53
6	A	1207	CLR	C12-C11	-13.38	1.24	1.53
6	A	1207	CLR	C7-C8	-13.33	1.30	1.53
6	A	1206	CLR	C12-C11	-13.32	1.25	1.53
6	A	1208	CLR	C12-C11	-13.27	1.25	1.53
6	A	1206	CLR	C7-C8	-13.24	1.30	1.53
6	A	1208	CLR	C7-C8	-13.12	1.31	1.53
6	A	1206	CLR	C8-C9	-9.23	1.36	1.53
6	A	1207	CLR	C8-C9	-9.17	1.36	1.53

Continued on next page...

*Continued from previous page...*

Mol	Chain	Res	Type	Atoms	Z	Observed(Å)	Ideal(Å)
6	A	1208	CLR	C8-C9	-9.15	1.36	1.53
6	A	1208	CLR	C10-C5	-8.94	1.35	1.52
6	A	1206	CLR	C10-C5	-8.79	1.35	1.52
6	A	1207	CLR	C10-C5	-8.73	1.35	1.52
6	A	1206	CLR	C7-C6	8.64	1.68	1.50
6	A	1208	CLR	C12-C13	-8.53	1.38	1.54
6	A	1207	CLR	C12-C13	-8.49	1.38	1.54
6	A	1208	CLR	C7-C6	8.38	1.68	1.50
6	A	1206	CLR	C12-C13	-8.24	1.39	1.54
6	A	1206	CLR	C13-C17	8.21	1.70	1.55
6	A	1207	CLR	C7-C6	8.20	1.67	1.50
6	A	1208	CLR	C13-C17	8.15	1.70	1.55
6	A	1207	CLR	C13-C17	8.10	1.70	1.55
6	A	1206	CLR	C16-C15	7.43	1.74	1.54
6	A	1207	CLR	C20-C17	-7.38	1.41	1.54
6	A	1206	CLR	C11-C9	7.37	1.66	1.53
6	A	1208	CLR	C20-C17	-7.36	1.41	1.54
6	A	1207	CLR	C16-C15	7.35	1.74	1.54
6	A	1208	CLR	C11-C9	7.33	1.66	1.53
6	A	1208	CLR	C16-C15	7.31	1.74	1.54
6	A	1206	CLR	C20-C17	-7.30	1.41	1.54
6	A	1207	CLR	C11-C9	7.23	1.65	1.53
6	A	1207	CLR	C10-C9	6.14	1.66	1.56
6	A	1208	CLR	C10-C9	5.94	1.66	1.56
6	A	1206	CLR	C10-C9	5.90	1.65	1.56
6	A	1207	CLR	C15-C14	5.83	1.66	1.54
6	A	1206	CLR	C15-C14	5.77	1.66	1.54
6	A	1208	CLR	C15-C14	5.74	1.66	1.54
6	A	1208	CLR	C2-C3	-4.72	1.40	1.51
6	A	1207	CLR	C2-C3	-4.69	1.40	1.51
6	A	1206	CLR	C2-C3	-4.56	1.40	1.51
6	A	1206	CLR	C6-C5	4.44	1.42	1.33
6	A	1208	CLR	C6-C5	4.08	1.41	1.33
6	A	1207	CLR	C6-C5	4.06	1.41	1.33
3	A	1202	CAU	O14-C13	2.36	1.43	1.36
6	A	1207	CLR	C1-C10	2.23	1.58	1.54
6	A	1206	CLR	C1-C10	2.17	1.58	1.54
6	A	1208	CLR	C1-C10	2.07	1.58	1.54
6	A	1206	CLR	C22-C20	2.07	1.59	1.54
6	A	1208	CLR	C22-C20	2.02	1.59	1.54

All (53) bond angle outliers are listed below:

Mol	Chain	Res	Type	Atoms	Z	Observed(°)	Ideal(°)
7	A	1209	PLM	O2-C1-C2	-7.03	80.76	126.89
6	A	1207	CLR	C7-C6-C5	-7.03	112.10	125.06
6	A	1208	CLR	C7-C6-C5	-6.08	113.84	125.06
6	A	1208	CLR	C10-C5-C6	-5.49	114.50	122.90
6	A	1206	CLR	C7-C8-C14	5.29	118.58	110.91
6	A	1208	CLR	C12-C13-C14	4.83	114.77	107.27
6	A	1206	CLR	C7-C6-C5	-4.74	116.31	125.06
6	A	1207	CLR	C7-C8-C9	4.57	115.25	109.71
6	A	1207	CLR	C12-C13-C14	4.57	114.36	107.27
6	A	1207	CLR	C7-C8-C14	4.30	117.14	110.91
6	A	1206	CLR	C10-C5-C6	-4.28	116.35	122.90
6	A	1207	CLR	C10-C9-C8	4.26	119.12	112.73
6	A	1208	CLR	C7-C8-C9	4.22	114.82	109.71
6	A	1207	CLR	C9-C10-C5	4.16	116.17	109.65
6	A	1207	CLR	C19-C10-C9	-3.94	106.99	111.68
6	A	1206	CLR	C14-C8-C9	3.93	114.35	109.09
6	A	1206	CLR	C12-C13-C14	3.89	113.31	107.27
6	A	1206	CLR	C18-C13-C17	-3.70	104.81	111.71
6	A	1208	CLR	C7-C8-C14	3.68	116.25	110.91
6	A	1208	CLR	C14-C8-C9	3.65	113.98	109.09
6	A	1208	CLR	C18-C13-C17	-3.62	104.95	111.71
6	A	1206	CLR	C12-C13-C17	3.59	121.95	116.57
6	A	1208	CLR	C19-C10-C9	-3.57	107.42	111.68
6	A	1206	CLR	C16-C17-C20	-3.51	106.72	112.15
6	A	1208	CLR	C12-C11-C9	3.43	119.06	113.11
6	A	1207	CLR	C18-C13-C17	-3.36	105.45	111.71
6	A	1207	CLR	C16-C17-C20	-3.30	107.03	112.15
6	A	1206	CLR	C19-C10-C9	-3.28	107.77	111.68
3	A	1202	CAU	O14-C13-C9	3.28	121.76	117.11
6	A	1208	CLR	C18-C13-C12	-2.95	105.92	110.59
6	A	1207	CLR	C18-C13-C12	-2.83	106.11	110.59
3	A	1202	CAU	O14-C13-C12	-2.79	118.31	124.46
6	A	1206	CLR	C11-C9-C10	2.75	116.70	113.08
6	A	1208	CLR	C11-C12-C13	2.75	117.49	112.78
6	A	1207	CLR	C14-C8-C9	2.74	112.75	109.09
6	A	1207	CLR	C12-C11-C9	2.73	117.85	113.11
6	A	1206	CLR	C7-C8-C9	2.70	112.98	109.71
6	A	1206	CLR	C18-C13-C12	-2.67	106.37	110.59
6	A	1208	CLR	C13-C17-C20	-2.61	115.40	119.49
6	A	1207	CLR	C10-C5-C6	-2.53	119.03	122.90
6	A	1207	CLR	C11-C12-C13	2.51	117.08	112.78
6	A	1207	CLR	C4-C5-C6	2.46	124.16	120.61
6	A	1208	CLR	C9-C10-C5	2.45	113.49	109.65

Continued on next page...

*Continued from previous page...*

Mol	Chain	Res	Type	Atoms	Z	Observed(°)	Ideal(°)
6	A	1208	CLR	C10-C9-C8	2.43	116.38	112.73
6	A	1206	CLR	C18-C13-C14	-2.39	107.26	111.71
6	A	1207	CLR	C12-C13-C17	2.32	120.05	116.57
6	A	1206	CLR	C21-C20-C22	-2.30	106.77	110.36
6	A	1208	CLR	C16-C17-C20	-2.23	108.69	112.15
6	A	1207	CLR	C21-C20-C22	-2.20	106.91	110.36
6	A	1208	CLR	C17-C13-C14	2.17	102.64	100.07
6	A	1208	CLR	C12-C13-C17	2.07	119.67	116.57
6	A	1208	CLR	C1-C10-C5	2.05	112.50	108.75
6	A	1207	CLR	C18-C13-C14	-2.00	107.97	111.71

There are no chirality outliers.

All (29) torsion outliers are listed below:

Mol	Chain	Res	Type	Atoms
3	A	1202	CAU	C15-C16-C18-N19
7	A	1209	PLM	C1-C2-C3-C4
8	A	1210	12P	O25-C26-C27-O28
6	A	1206	CLR	C17-C20-C22-C23
6	A	1206	CLR	C21-C20-C22-C23
6	A	1206	CLR	C20-C22-C23-C24
6	A	1206	CLR	C22-C23-C24-C25
3	A	1202	CAU	O17-C16-C18-N19
6	A	1208	CLR	C22-C23-C24-C25
7	A	1209	PLM	CA-CB-CC-CD
8	A	1210	12P	O22-C23-C24-O25
8	A	1210	12P	O19-C20-C21-O22
6	A	1208	CLR	C20-C22-C23-C24
7	A	1209	PLM	C5-C6-C7-C8
8	A	1210	12P	O28-C29-C30-O31
7	A	1209	PLM	C8-C9-CA-CB
6	A	1208	CLR	C13-C17-C20-C21
8	A	1210	12P	C20-C21-O22-C23
8	A	1210	12P	C26-C27-O28-C29
7	A	1209	PLM	C9-CA-CB-CC
8	A	1210	12P	C33-C32-O31-C30
4	A	1204	BU1	O5-C1-C2-C3
8	A	1210	12P	C27-C26-O25-C24
4	A	1203	BU1	O5-C1-C2-C3
8	A	1210	12P	C23-C24-O25-C26
4	A	1203	BU1	C2-C3-C4-O6
7	A	1209	PLM	C2-C3-C4-C5

*Continued on next page...*

*Continued from previous page...*

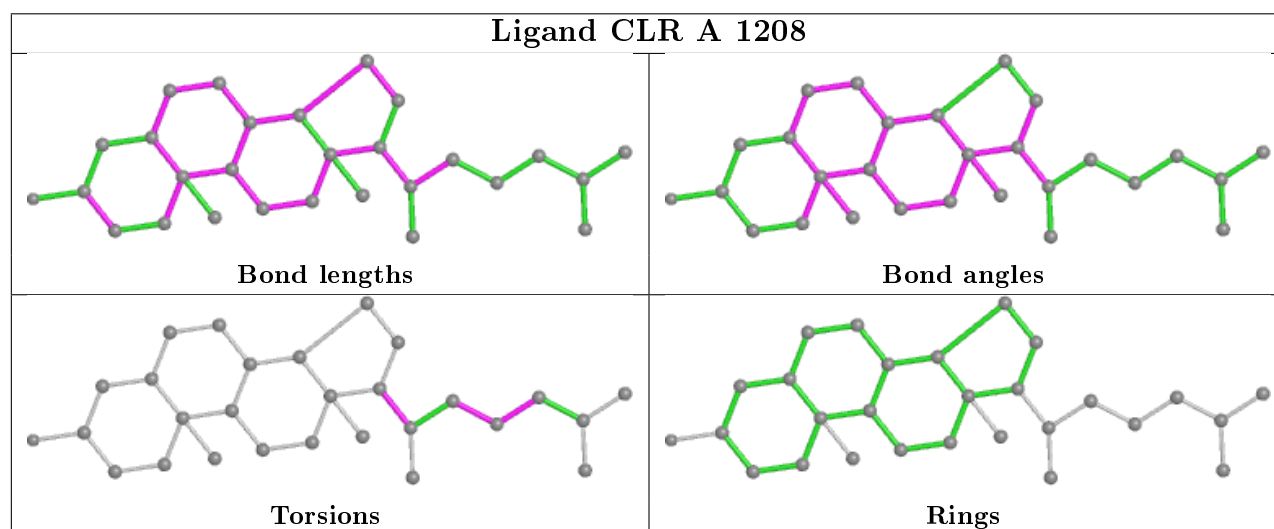
Mol	Chain	Res	Type	Atoms
6	A	1208	CLR	C16-C17-C20-C21
6	A	1208	CLR	C13-C17-C20-C22

There are no ring outliers.

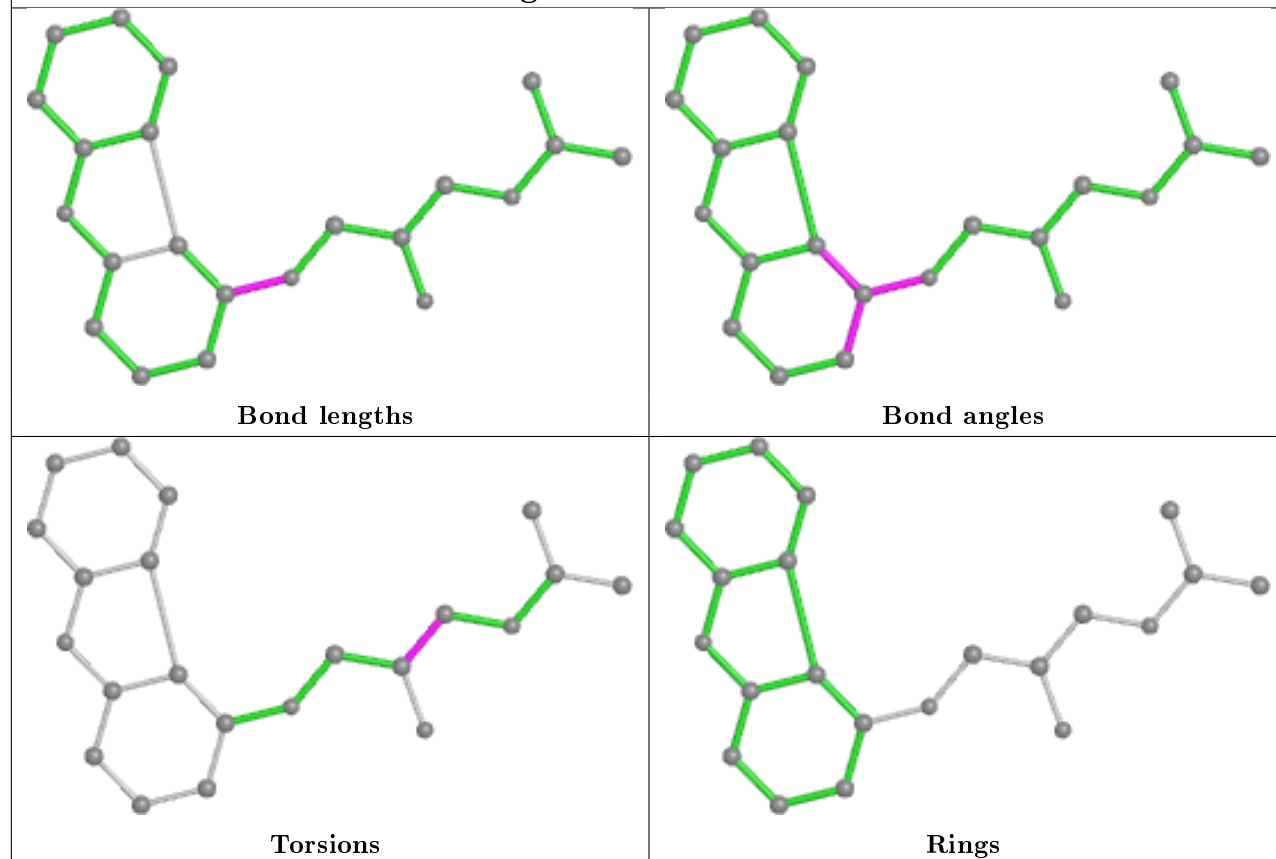
6 monomers are involved in 11 short contacts:

Mol	Chain	Res	Type	Clashes	Symm-Clashes
6	A	1208	CLR	3	0
4	A	1203	BU1	3	0
9	A	1213	SO4	1	0
6	A	1206	CLR	3	0
8	A	1210	12P	1	0
9	A	1212	SO4	1	0

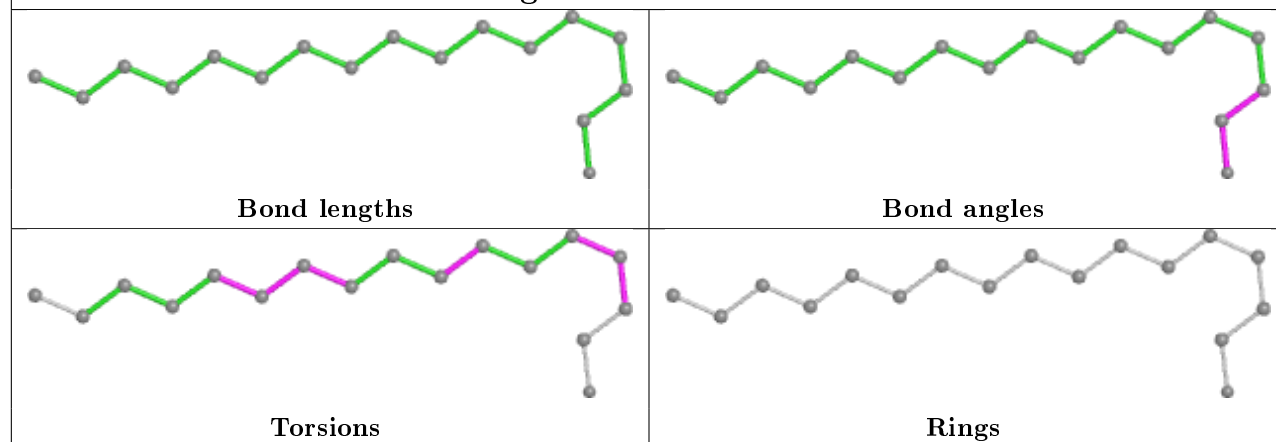
The following is a two-dimensional graphical depiction of Mogul quality analysis of bond lengths, bond angles, torsion angles, and ring geometry for all instances of the Ligand of Interest. In addition, ligands with molecular weight > 250 and outliers as shown on the validation Tables will also be included. For torsion angles, if less than 5% of the Mogul distribution of torsion angles is within 10 degrees of the torsion angle in question, then that torsion angle is considered an outlier. Any bond that is central to one or more torsion angles identified as an outlier by Mogul will be highlighted in the graph. For rings, the root-mean-square deviation (RMSD) between the ring in question and similar rings identified by Mogul is calculated over all ring torsion angles. If the average RMSD is greater than 60 degrees and the minimal RMSD between the ring in question and any Mogul-identified rings is also greater than 60 degrees, then that ring is considered an outlier. The outliers are highlighted in purple. The color gray indicates Mogul did not find sufficient equivalents in the CSD to analyse the geometry.

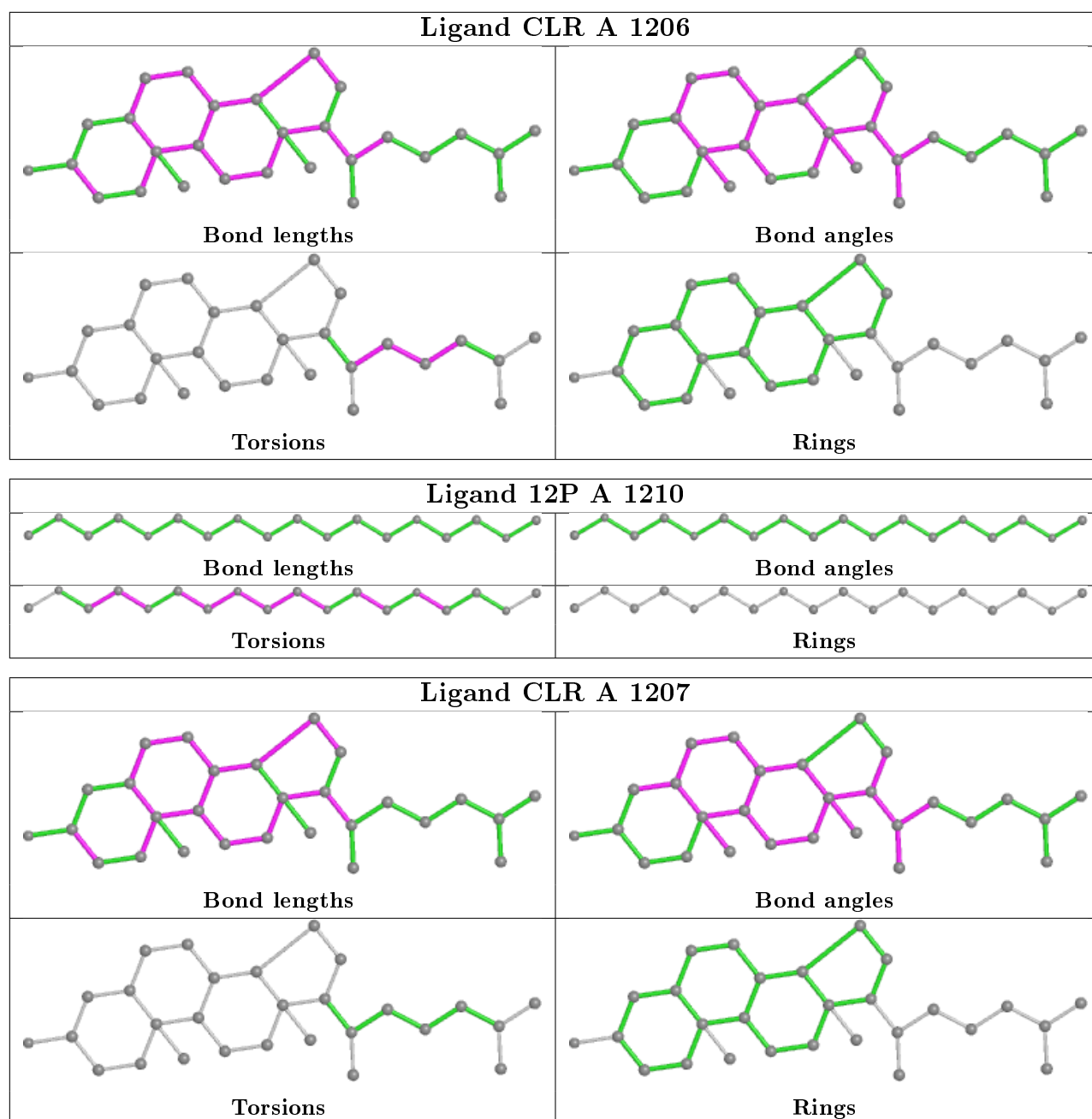


## Ligand CAU A 1202



## Ligand PLM A 1209





## 5.7 Other polymers [i](#)

There are no such residues in this entry.

## 5.8 Polymer linkage issues [i](#)

There are no chain breaks in this entry.



## 6 Fit of model and data [i](#)

### 6.1 Protein, DNA and RNA chains [i](#)

In the following table, the column labelled ‘#RSRZ> 2’ contains the number (and percentage) of RSRZ outliers, followed by percent RSRZ outliers for the chain as percentile scores relative to all X-ray entries and entries of similar resolution. The OWAB column contains the minimum, median, 95<sup>th</sup> percentile and maximum values of the occupancy-weighted average B-factor per residue. The column labelled ‘Q< 0.9’ lists the number of (and percentage) of residues with an average occupancy less than 0.9.

Mol	Chain	Analysed	<RSRZ>	#RSRZ>2	OWAB(Å <sup>2</sup> )	Q<0.9
1	A	442/500 (88%)	0.49	13 (2%) 51 54	40, 63, 85, 114	0

All (13) RSRZ outliers are listed below:

Mol	Chain	Res	Type	RSRZ
1	A	29	ASP	5.2
1	A	31	VAL	4.9
1	A	34	VAL	3.9
1	A	32	TRP	3.4
1	A	30	GLU	3.2
1	A	141	TYR	3.1
1	A	1057	VAL	2.8
1	A	1119	ARG	2.8
1	A	33	VAL	2.5
1	A	217	PHE	2.5
1	A	298	ILE	2.4
1	A	91	ALA	2.3
1	A	198	ALA	2.3

### 6.2 Non-standard residues in protein, DNA, RNA chains [i](#)

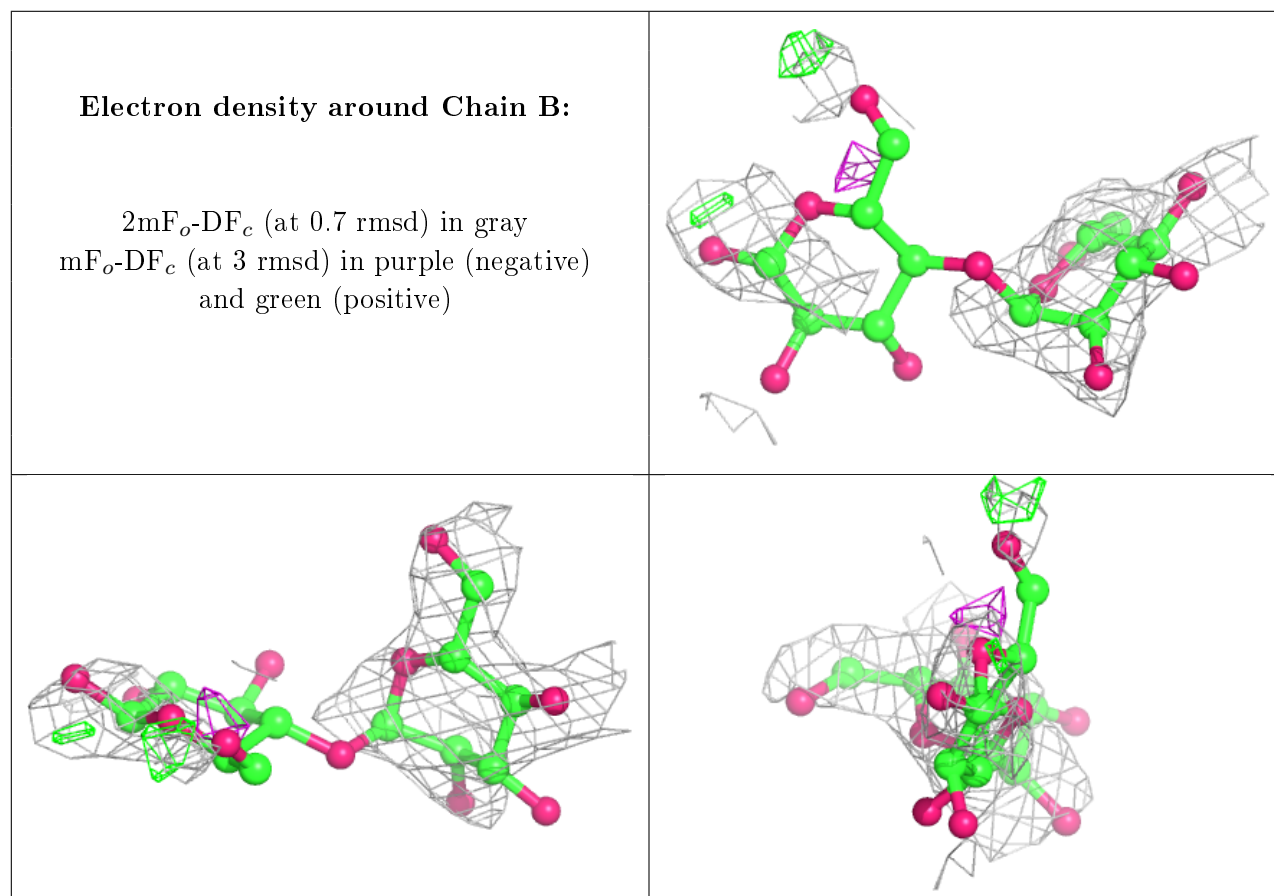
There are no non-standard protein/DNA/RNA residues in this entry.

### 6.3 Carbohydrates [i](#)

In the following table, the Atoms column lists the number of modelled atoms in the group and the number defined in the chemical component dictionary. The B-factors column lists the minimum, median, 95<sup>th</sup> percentile and maximum values of B factors of atoms in the group. The column labelled ‘Q< 0.9’ lists the number of atoms with occupancy less than 0.9.

Mol	Type	Chain	Res	Atoms	RSCC	RSR	B-factors( $\text{\AA}^2$ )	Q<0.9
2	BGC	B	1	12/12	0.47	0.74	84,103,107,111	12
2	GLC	B	2	11/12	0.77	0.32	94,98,102,104	11

The following is a graphical depiction of the model fit to experimental electron density for oligosaccharide. Each fit is shown from different orientation to approximate a three-dimensional view.



## 6.4 Ligands ⓘ

In the following table, the Atoms column lists the number of modelled atoms in the group and the number defined in the chemical component dictionary. The B-factors column lists the minimum, median, 95<sup>th</sup> percentile and maximum values of B factors of atoms in the group. The column labelled 'Q< 0.9' lists the number of atoms with occupancy less than 0.9.

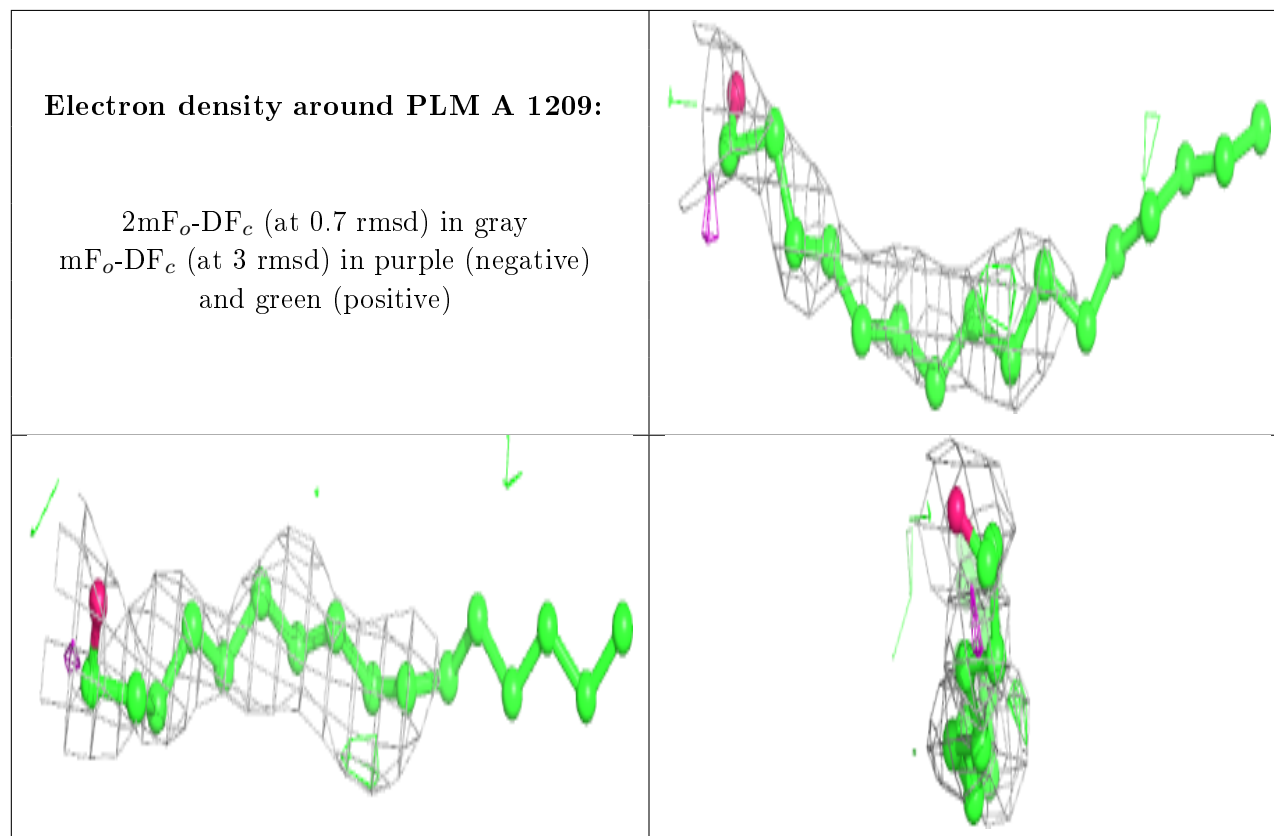
Mol	Type	Chain	Res	Atoms	RSCC	RSR	B-factors( $\text{\AA}^2$ )	Q<0.9
7	PLM	A	1209	17/18	0.76	0.69	78,86,101,104	17
9	SO4	A	1215	5/5	0.80	0.18	113,115,118,143	0
8	12P	A	1210	18/37	0.80	0.35	71,85,94,96	7
9	SO4	A	1216	5/5	0.80	0.30	84,90,92,93	5
6	CLR	A	1206	28/28	0.84	0.36	82,90,96,104	0
4	BU1	A	1204	6/6	0.86	0.27	62,66,67,77	0

*Continued on next page...*

*Continued from previous page...*

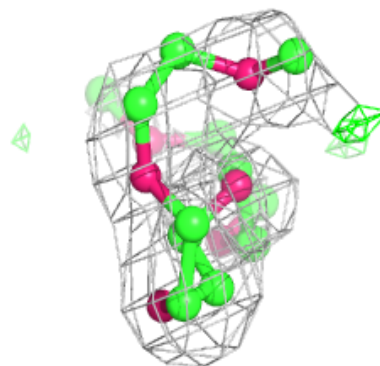
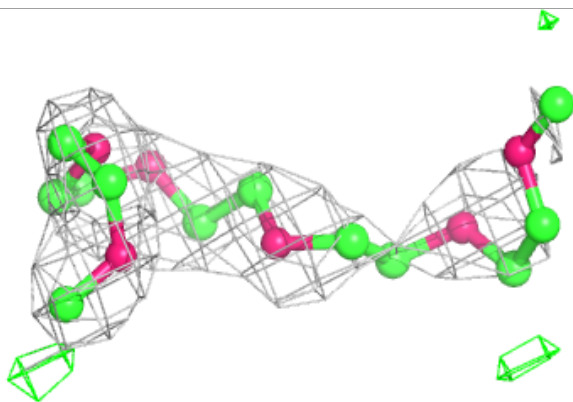
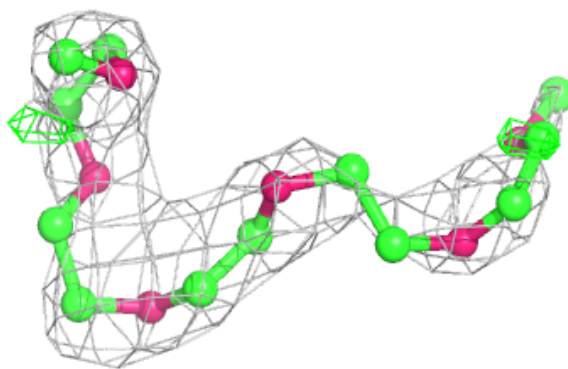
Mol	Type	Chain	Res	Atoms	RSCC	RSR	B-factors( $\text{\AA}^2$ )	Q<0.9
6	CLR	A	1208	28/28	0.87	0.45	95,106,112,114	0
5	ACM	A	1205	4/4	0.88	0.33	53,55,61,66	4
6	CLR	A	1207	28/28	0.88	0.39	75,86,90,94	28
9	SO4	A	1213	5/5	0.92	0.29	63,64,69,72	5
9	SO4	A	1211	5/5	0.93	0.20	63,70,72,75	5
3	CAU	A	1202	22/22	0.93	0.18	54,61,66,67	0
4	BU1	A	1203	6/6	0.94	0.26	49,52,58,59	6
9	SO4	A	1214	5/5	0.94	0.27	58,61,63,65	5
9	SO4	A	1212	5/5	0.96	0.23	68,69,76,79	5

The following is a graphical depiction of the model fit to experimental electron density of all instances of the Ligand of Interest. In addition, ligands with molecular weight > 250 and outliers as shown on the geometry validation Tables will also be included. Each fit is shown from different orientation to approximate a three-dimensional view.

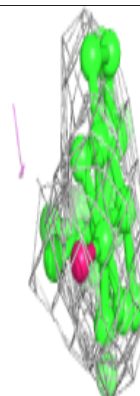
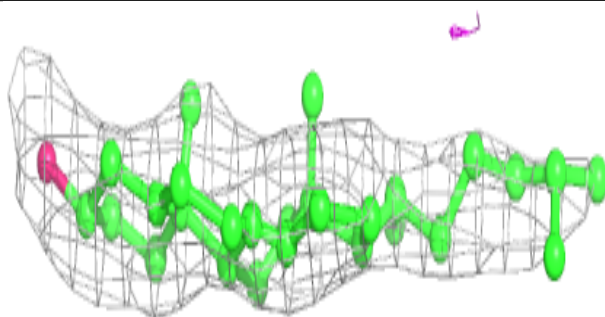
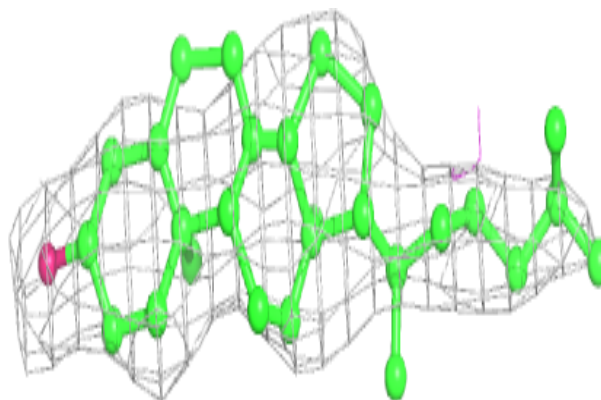


**Electron density around 12P A 1210:**

$2mF_o-DF_c$  (at 0.7 rmsd) in gray  
 $mF_o-DF_c$  (at 3 rmsd) in purple (negative)  
and green (positive)

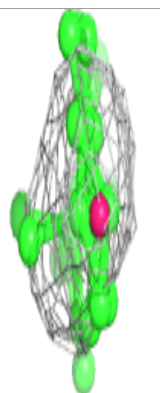
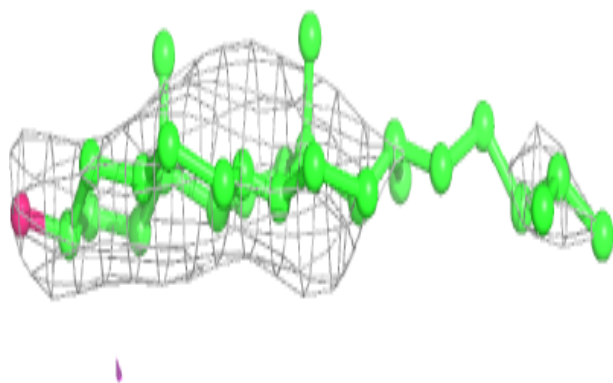
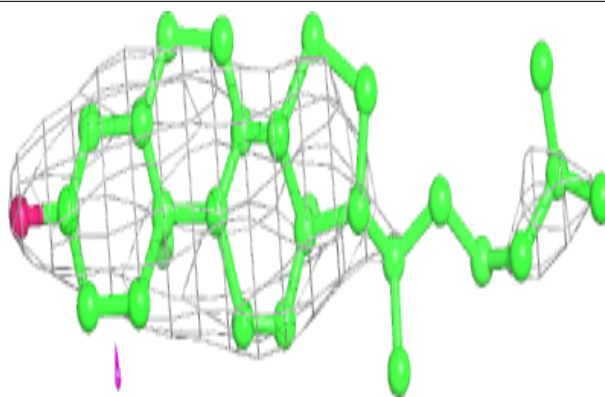
**Electron density around CLR A 1206:**

$2mF_o-DF_c$  (at 0.7 rmsd) in gray  
 $mF_o-DF_c$  (at 3 rmsd) in purple (negative)  
and green (positive)

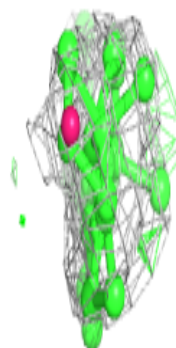
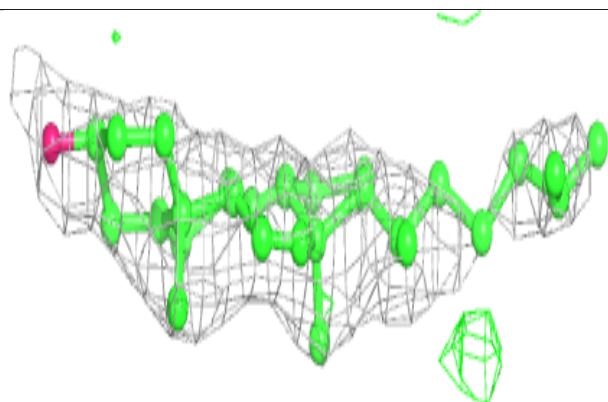
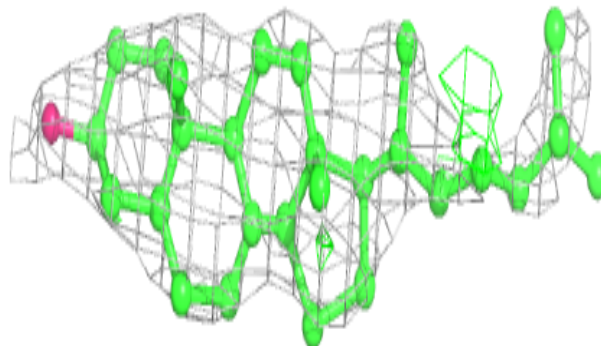


**Electron density around CLR A 1208:**

$2mF_o-DF_c$  (at 0.7 rmsd) in gray  
 $mF_o-DF_c$  (at 3 rmsd) in purple (negative)  
and green (positive)

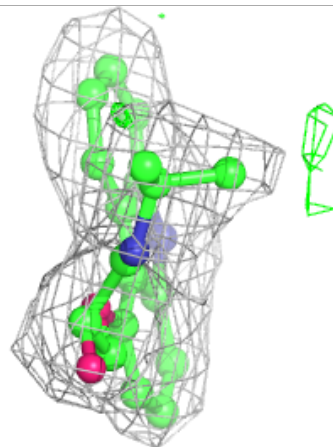
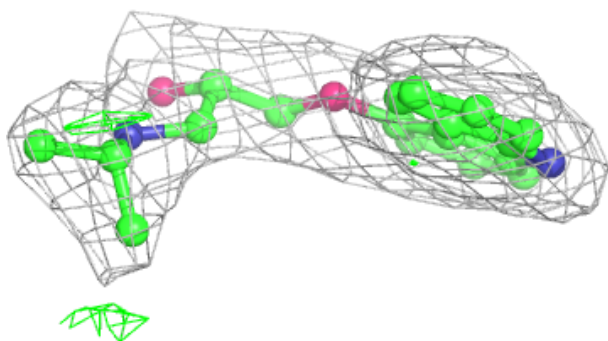
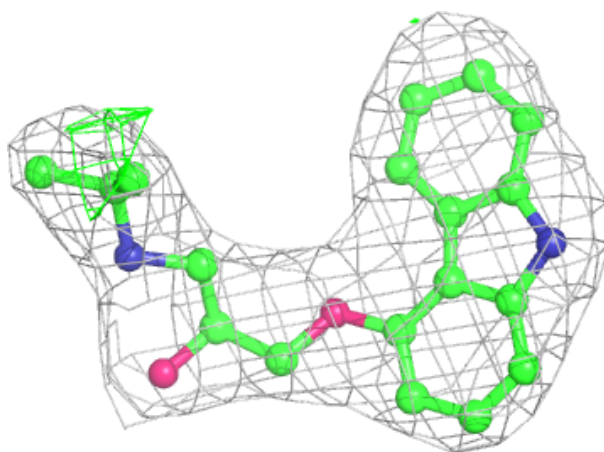
**Electron density around CLR A 1207:**

$2mF_o-DF_c$  (at 0.7 rmsd) in gray  
 $mF_o-DF_c$  (at 3 rmsd) in purple (negative)  
and green (positive)



**Electron density around CAU A 1202:**

$2mF_o-DF_c$  (at 0.7 rmsd) in gray  
 $mF_o-DF_c$  (at 3 rmsd) in purple (negative)  
and green (positive)



## 6.5 Other polymers [i](#)

There are no such residues in this entry.