



wwPDB X-ray Structure Validation Summary Report ⓘ

Aug 25, 2020 – 02:17 PM BST

PDB ID : 5D5D
Title : In meso in situ serial X-ray crystallography structure of AlgE at 100 K
Authors : Ma, P.; Huang, C.-Y.; Olieric, V.; Diederichs, K.; Wang, M.; Caffrey, M.
Deposited on : 2015-08-10
Resolution : 2.40 Å(reported)

This is a wwPDB X-ray Structure Validation Summary Report for a publicly released PDB entry.

We welcome your comments at validation@mail.wwpdb.org

A user guide is available at

<https://www.wwpdb.org/validation/2017/XrayValidationReportHelp>

with specific help available everywhere you see the ⓘ symbol.

The following versions of software and data (see [references ⓘ](#)) were used in the production of this report:

MolProbity : 4.02b-467
Mogul : 1.8.5 (274361), CSD as541be (2020)
Xtriage (Phenix) : 1.13
EDS : 2.13
buster-report : 1.1.7 (2018)
Percentile statistics : 20191225.v01 (using entries in the PDB archive December 25th 2019)
Refmac : 5.8.0158
CCP4 : 7.0.044 (Gargrove)
Ideal geometry (proteins) : Engh & Huber (2001)
Ideal geometry (DNA, RNA) : Parkinson et al. (1996)
Validation Pipeline (wwPDB-VP) : 2.13

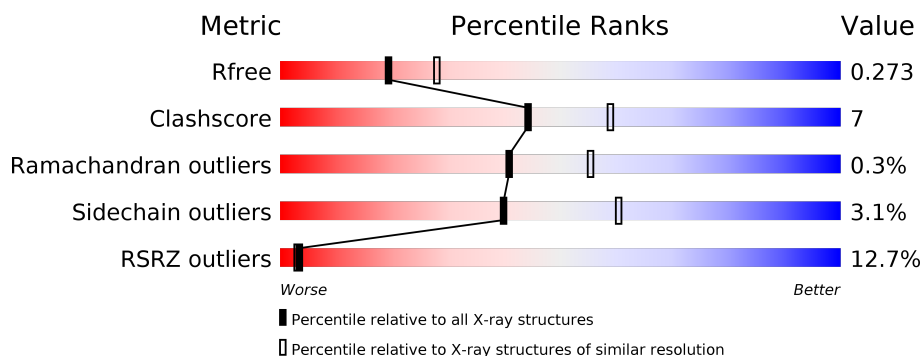
1 Overall quality at a glance

The following experimental techniques were used to determine the structure:

X-RAY DIFFRACTION

The reported resolution of this entry is 2.40 Å.

Percentile scores (ranging between 0-100) for global validation metrics of the entry are shown in the following graphic. The table shows the number of entries on which the scores are based.



Metric	Whole archive (#Entries)	Similar resolution (#Entries, resolution range(Å))
R_{free}	130704	3907 (2.40-2.40)
Clashscore	141614	4398 (2.40-2.40)
Ramachandran outliers	138981	4318 (2.40-2.40)
Sidechain outliers	138945	4319 (2.40-2.40)
RSRZ outliers	127900	3811 (2.40-2.40)

The table below summarises the geometric issues observed across the polymeric chains and their fit to the electron density. The red, orange, yellow and green segments on the lower bar indicate the fraction of residues that contain outliers for ≥ 3 , 2, 1 and 0 types of geometric quality criteria respectively. A grey segment represents the fraction of residues that are not modelled. The numeric value for each fraction is indicated below the corresponding segment, with a dot representing fractions $\leq 5\%$. The upper red bar (where present) indicates the fraction of residues that have poor fit to the electron density. The numeric value is given above the bar.

Mol	Chain	Length	Quality of chain
1	A	490	

The following table lists non-polymeric compounds, carbohydrate monomers and non-standard residues in protein, DNA, RNA chains that are outliers for geometric or electron-density-fit criteria:

Mol	Type	Chain	Res	Chirality	Geometry	Clashes	Electron density
6	78M	A	516	-	-	-	X

2 Entry composition

There are 8 unique types of molecules in this entry. The entry contains 3478 atoms, of which 0 are hydrogens and 0 are deuteriums.

In the tables below, the ZeroOcc column contains the number of atoms modelled with zero occupancy, the AltConf column contains the number of residues with at least one atom in alternate conformation and the Trace column contains the number of residues modelled with at most 2 atoms.

- Molecule 1 is a protein called Alginate production protein AlgE.

Mol	Chain	Residues	Atoms					ZeroOcc	AltConf	Trace
1	A	403	Total	C	N	O	S	0	1	0
			3222	2021	581	617	3			

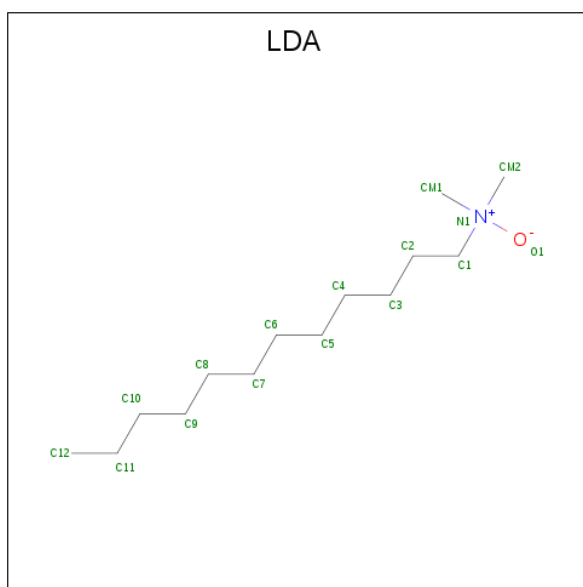
- Molecule 2 is SODIUM ION (three-letter code: NA) (formula: Na).

Mol	Chain	Residues	Atoms		ZeroOcc	AltConf
2	A	2	Total	Na	0	0
			2	2		

- Molecule 3 is CALCIUM ION (three-letter code: CA) (formula: Ca).

Mol	Chain	Residues	Atoms		ZeroOcc	AltConf
3	A	1	Total	Ca	0	0
			1	1		

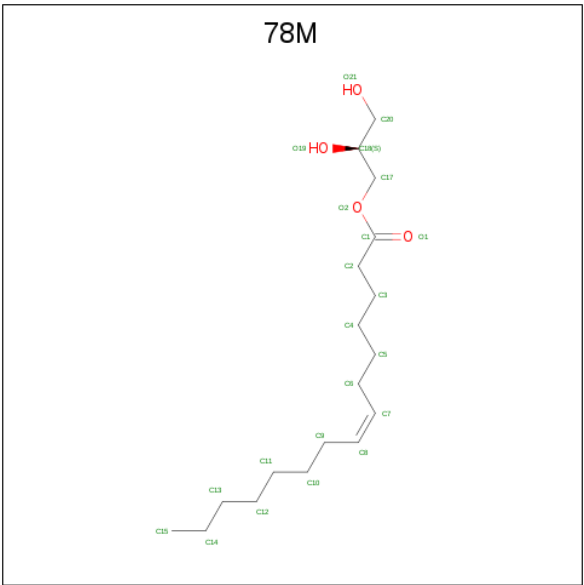
- Molecule 4 is LAURYL DIMETHYLAMINE-N-OXIDE (three-letter code: LDA) (formula: C₁₄H₃₁NO).



Mol	Chain	Residues	Atoms				ZeroOcc	AltConf
4	A	1	Total	C	N	O	0	0
			16	14	1	1		
4	A	1	Total	C	N	O	0	0
			16	14	1	1		
4	A	1	Total	C	N	O	0	0
			16	14	1	1		
4	A	1	Total	C	N	O	0	0
			16	14	1	1		
4	A	1	Total	C	N	O	0	0
			16	14	1	1		
4	A	1	Total	C	N	O	0	0
			13	11	1	1		

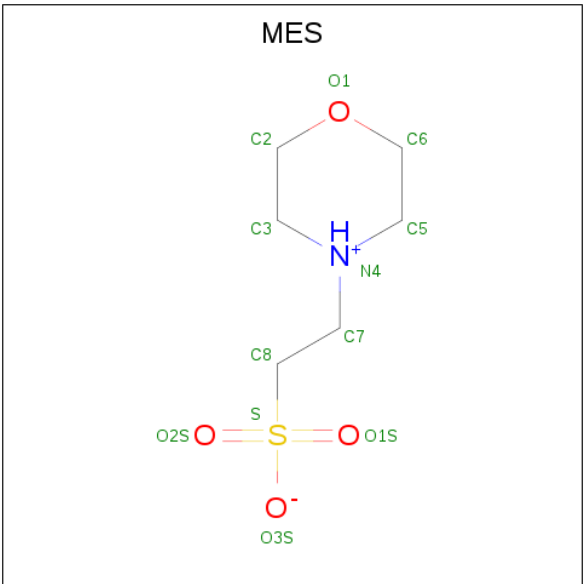
- Molecule 5 is 3,6,9,12,15,18,21,24-OCTAOXAHEXACOSAN-1-OL (three-letter code: PE5) (formula: C₁₈H₃₈O₉).





Mol	Chain	Residues	Atoms			ZeroOcc	AltConf
6	A	1	Total	C	O	0	0
			22	18	4		
6	A	1	Total	C	O	0	0
			22	18	4		

- Molecule 7 is 2-(N-MORPHOLINO)-ETHANESULFONIC ACID (three-letter code: MES) (formula: C₆H₁₃NO₄S).



Mol	Chain	Residues	Atoms					ZeroOcc	AltConf
7	A	1	Total	C	N	O	S	0	0
			12	6	1	4	1		

Continued on next page...

Continued from previous page...

Mol	Chain	Residues	Atoms					ZeroOcc	AltConf
7	A	1	Total	C	N	O	S	0	0
			12	6	1	4	1		

- Molecule 8 is water.

Mol	Chain	Residues	Atoms		ZeroOcc	AltConf
8	A	23	Total	O	0	0
			23	23		

These plots are drawn for all protein, RNA, DNA and oligosaccharide chains in the entry. The first graphic for a chain summarises the proportions of the various outlier classes displayed in the second graphic. The second graphic shows the sequence view annotated by issues in geometry and electron density. Residues are color-coded according to the number of geometric quality criteria for which they contain at least one outlier: green = 0, yellow = 1, orange = 2 and red = 3 or more. A red dot above a residue indicates a poor fit to the electron density ($RSRZ > 2$). Stretches of 2 or more consecutive residues without any outlier are shown as a green connector. Residues present in the sample, but not in the model, are shown in grey.

Chain A:

10% 67% 15% 18%

MET ASN SER SER ARG VAL ASN PRO ARG PRO SER PHE LEU ALA THR ASP THR LEU GLN SER ASP THR THR ASP GLY LEU ASN ALA ASP PHE ASN GLY ALA ASN SER GLY PRO D122 K123 S124 Y125 L126 A127 F131 E144 D156 Q159 W160 D167 S171 T175 H180 F178 G179 Q186 F187 S188 Y189 L190 A191 T192 ASP LEU ASP GLU LEU ALA PRO GLU THR ASP D202 K203 R204 D210 G215 L216 W215 A216 P217 H218 R219 R220 T221 G222 V223 R224 D230 S231 E240 V241 D242 D243 L244 D245 T257 E258 A259 Y264 W265 V266 S269 D406 D407 S408 D409 I410 E423 F490

4 Data and refinement statistics

Property	Value	Source
Space group	P 21 21 21	Depositor
Cell constants a, b, c, α , β , γ	46.33Å 66.35Å 176.84Å 90.00° 90.00° 90.00°	Depositor
Resolution (Å)	25.22 – 2.40 24.53 – 2.40	Depositor EDS
% Data completeness (in resolution range)	92.8 (25.22-2.40) 92.8 (24.53-2.40)	Depositor EDS
R_{merge}	(Not available)	Depositor
R_{sym}	(Not available)	Depositor
$\langle I/\sigma(I) \rangle$ ¹	1.63 (at 2.41Å)	Xtriage
Refinement program	BUSTER 2.10.2	Depositor
R, R_{free}	0.219 , 0.260 0.228 , 0.273	Depositor DCC
R_{free} test set	999 reflections (4.87%)	wwPDB-VP
Wilson B-factor (Å ²)	45.7	Xtriage
Anisotropy	0.511	Xtriage
Bulk solvent k_{sol} (e/Å ³), B_{sol} (Å ²)	0.45 , 60.8	EDS
L-test for twinning ²	$\langle L \rangle = 0.48$, $\langle L^2 \rangle = 0.32$	Xtriage
Estimated twinning fraction	No twinning to report.	Xtriage
F_o, F_c correlation	0.93	EDS
Total number of atoms	3478	wwPDB-VP
Average B, all atoms (Å ²)	50.0	wwPDB-VP

Xtriage's analysis on translational NCS is as follows: *The largest off-origin peak in the Patterson function is 5.02% of the height of the origin peak. No significant pseudotranslation is detected.*

¹Intensities estimated from amplitudes.

²Theoretical values of $\langle |L| \rangle$, $\langle L^2 \rangle$ for acentric reflections are 0.5, 0.333 respectively for untwinned datasets, and 0.375, 0.2 for perfectly twinned datasets.

5 Model quality

5.1 Standard geometry

Bond lengths and bond angles in the following residue types are not validated in this section: LDA, NA, CA, MES, PE5, 78M

The Z score for a bond length (or angle) is the number of standard deviations the observed value is removed from the expected value. A bond length (or angle) with $|Z| > 5$ is considered an outlier worth inspection. RMSZ is the root-mean-square of all Z scores of the bond lengths (or angles).

Mol	Chain	Bond lengths		Bond angles	
		RMSZ	# Z >5	RMSZ	# Z >5
1	A	0.53	0/3308	0.79	0/4478

There are no bond length outliers.

There are no bond angle outliers.

There are no chirality outliers.

There are no planarity outliers.

5.2 Too-close contacts

In the following table, the Non-H and H(model) columns list the number of non-hydrogen atoms and hydrogen atoms in the chain respectively. The H(added) column lists the number of hydrogen atoms added and optimized by MolProbity. The Clashes column lists the number of clashes within the asymmetric unit, whereas Symm-Clashes lists symmetry related clashes.

Mol	Chain	Non-H	H(model)	H(added)	Clashes	Symm-Clashes
1	A	3222	0	3004	45	0
2	A	2	0	0	0	0
3	A	1	0	0	0	0
4	A	109	0	208	3	0
5	A	53	0	61	3	0
6	A	44	0	68	1	0
7	A	24	0	26	0	0
8	A	23	0	0	0	0
All	All	3478	0	3367	45	0

The all-atom clashscore is defined as the number of clashes found per 1000 atoms (including hydrogen atoms). The all-atom clashscore for this structure is 7.

The worst 5 of 45 close contacts within the same asymmetric unit are listed below, sorted by their

clash magnitude.

Atom-1	Atom-2	Interatomic distance (Å)	Clash overlap (Å)
1:A:409:ASP:H	5:A:513:PE5:H72	1.49	0.77
1:A:457:LEU:HD11	1:A:487:ILE:HD12	1.70	0.73
1:A:47:LYS:HB3	1:A:72:ASP:HB3	1.84	0.60
1:A:88:PHE:HB2	4:A:508:LDA:H91	1.83	0.59
1:A:180:HIS:HB2	1:A:210:ASP:OD2	2.05	0.57

There are no symmetry-related clashes.

5.3 Torsion angles [i](#)

5.3.1 Protein backbone [i](#)

In the following table, the Percentiles column shows the percent Ramachandran outliers of the chain as a percentile score with respect to all X-ray entries followed by that with respect to entries of similar resolution.

The Analysed column shows the number of residues for which the backbone conformation was analysed, and the total number of residues.

Mol	Chain	Analysed	Favoured	Allowed	Outliers	Percentiles
1	A	396/490 (81%)	379 (96%)	16 (4%)	1 (0%)	41 55

All (1) Ramachandran outliers are listed below:

Mol	Chain	Res	Type
1	A	374	LEU

5.3.2 Protein sidechains [i](#)

In the following table, the Percentiles column shows the percent sidechain outliers of the chain as a percentile score with respect to all X-ray entries followed by that with respect to entries of similar resolution.

The Analysed column shows the number of residues for which the sidechain conformation was analysed, and the total number of residues.

Mol	Chain	Analysed	Rotameric	Outliers	Percentiles
1	A	324/394 (82%)	314 (97%)	10 (3%)	40 60

5 of 10 residues with a non-rotameric sidechain are listed below:

Mol	Chain	Res	Type
1	A	231	SER
1	A	244	LEU
1	A	292	THR
1	A	221	ILE
1	A	258	GLU

Some sidechains can be flipped to improve hydrogen bonding and reduce clashes. All (4) such sidechains are listed below:

Mol	Chain	Res	Type
1	A	41	ASN
1	A	159	GLN
1	A	243	ASN
1	A	378	GLN

5.3.3 RNA ⓘ

There are no RNA molecules in this entry.

5.4 Non-standard residues in protein, DNA, RNA chains ⓘ

There are no non-standard protein/DNA/RNA residues in this entry.

5.5 Carbohydrates ⓘ

There are no monosaccharides in this entry.

5.6 Ligand geometry ⓘ

Of 19 ligands modelled in this entry, 3 are monoatomic - leaving 16 for Mogul analysis.

In the following table, the Counts columns list the number of bonds (or angles) for which Mogul statistics could be retrieved, the number of bonds (or angles) that are observed in the model and the number of bonds (or angles) that are defined in the Chemical Component Dictionary. The Link column lists molecule types, if any, to which the group is linked. The Z score for a bond length (or angle) is the number of standard deviations the observed value is removed from the expected value. A bond length (or angle) with $|Z| > 2$ is considered an outlier worth inspection. RMSZ is the root-mean-square of all Z scores of the bond lengths (or angles).

Mol	Type	Chain	Res	Link	Bond lengths			Bond angles		
					Counts	RMSZ	$\# Z > 2$	Counts	RMSZ	$\# Z > 2$
4	LDA	A	504	-	12,15,15	2.41	1 (8%)	14,17,17	1.05	2 (14%)

Mol	Type	Chain	Res	Link	Bond lengths			Bond angles		
					Counts	RMSZ	# Z > 2	Counts	RMSZ	# Z > 2
4	LDA	A	505	-	12,15,15	2.50	1 (8%)	14,17,17	0.84	0
5	PE5	A	512	-	11,11,26	0.78	0	10,10,25	0.20	0
7	MES	A	519	-	12,12,12	0.67	0	14,16,16	0.37	0
7	MES	A	518	-	12,12,12	0.75	0	14,16,16	0.59	0
4	LDA	A	506	-	12,15,15	2.57	1 (8%)	14,17,17	0.83	1 (7%)
5	PE5	A	514	-	8,8,26	0.84	0	7,7,25	0.38	0
6	78M	A	516	-	21,21,21	0.79	1 (4%)	22,22,22	0.80	1 (4%)
4	LDA	A	508	-	12,15,15	2.50	1 (8%)	14,17,17	0.88	1 (7%)
4	LDA	A	510	-	9,12,15	2.96	1 (11%)	11,14,17	0.75	0
4	LDA	A	507	-	12,15,15	2.50	1 (8%)	14,17,17	0.88	2 (14%)
4	LDA	A	509	-	12,15,15	2.56	1 (8%)	14,17,17	0.72	0
5	PE5	A	515	-	11,11,26	0.85	0	10,10,25	0.51	0
6	78M	A	517	-	21,21,21	0.80	1 (4%)	22,22,22	0.83	1 (4%)
5	PE5	A	511	-	7,7,26	0.47	0	6,6,25	0.26	0
5	PE5	A	513	-	11,11,26	0.96	0	10,10,25	0.32	0

In the following table, the Chirals column lists the number of chiral outliers, the number of chiral centers analysed, the number of these observed in the model and the number defined in the Chemical Component Dictionary. Similar counts are reported in the Torsion and Rings columns. '-' means no outliers of that kind were identified.

Mol	Type	Chain	Res	Link	Chirals	Torsions	Rings
4	LDA	A	504	-	-	4/13/13/13	-
4	LDA	A	505	-	-	6/13/13/13	-
5	PE5	A	512	-	-	5/9/9/24	-
7	MES	A	519	-	-	5/6/14/14	0/1/1/1
7	MES	A	518	-	-	3/6/14/14	0/1/1/1
4	LDA	A	506	-	-	7/13/13/13	-
5	PE5	A	514	-	-	4/6/6/24	-
6	78M	A	516	-	-	14/21/21/21	-
4	LDA	A	508	-	-	10/13/13/13	-
4	LDA	A	510	-	-	5/10/10/13	-
4	LDA	A	507	-	-	9/13/13/13	-
4	LDA	A	509	-	-	7/13/13/13	-
5	PE5	A	515	-	-	7/9/9/24	-
6	78M	A	517	-	-	6/21/21/21	-
5	PE5	A	511	-	-	2/5/5/24	-

Continued on next page...

Continued from previous page...

Mol	Type	Chain	Res	Link	Chirals	Torsions	Rings
5	PE5	A	513	-	-	6/9/9/24	-

The worst 5 of 9 bond length outliers are listed below:

Mol	Chain	Res	Type	Atoms	Z	Observed(Å)	Ideal(Å)
4	A	510	LDA	O1-N1	-8.66	1.21	1.42
4	A	506	LDA	O1-N1	-8.57	1.22	1.42
4	A	509	LDA	O1-N1	-8.56	1.22	1.42
4	A	505	LDA	O1-N1	-8.41	1.22	1.42
4	A	507	LDA	O1-N1	-8.35	1.22	1.42

The worst 5 of 8 bond angle outliers are listed below:

Mol	Chain	Res	Type	Atoms	Z	Observed(°)	Ideal(°)
4	A	504	LDA	CM1-N1-C1	-2.59	104.79	110.23
6	A	517	78M	O2-C1-C2	2.54	119.89	111.91
4	A	504	LDA	O1-N1-C1	2.34	115.01	109.27
4	A	506	LDA	CM1-N1-C1	-2.30	105.40	110.23
4	A	508	LDA	O1-N1-C1	2.15	114.54	109.27

There are no chirality outliers.

5 of 100 torsion outliers are listed below:

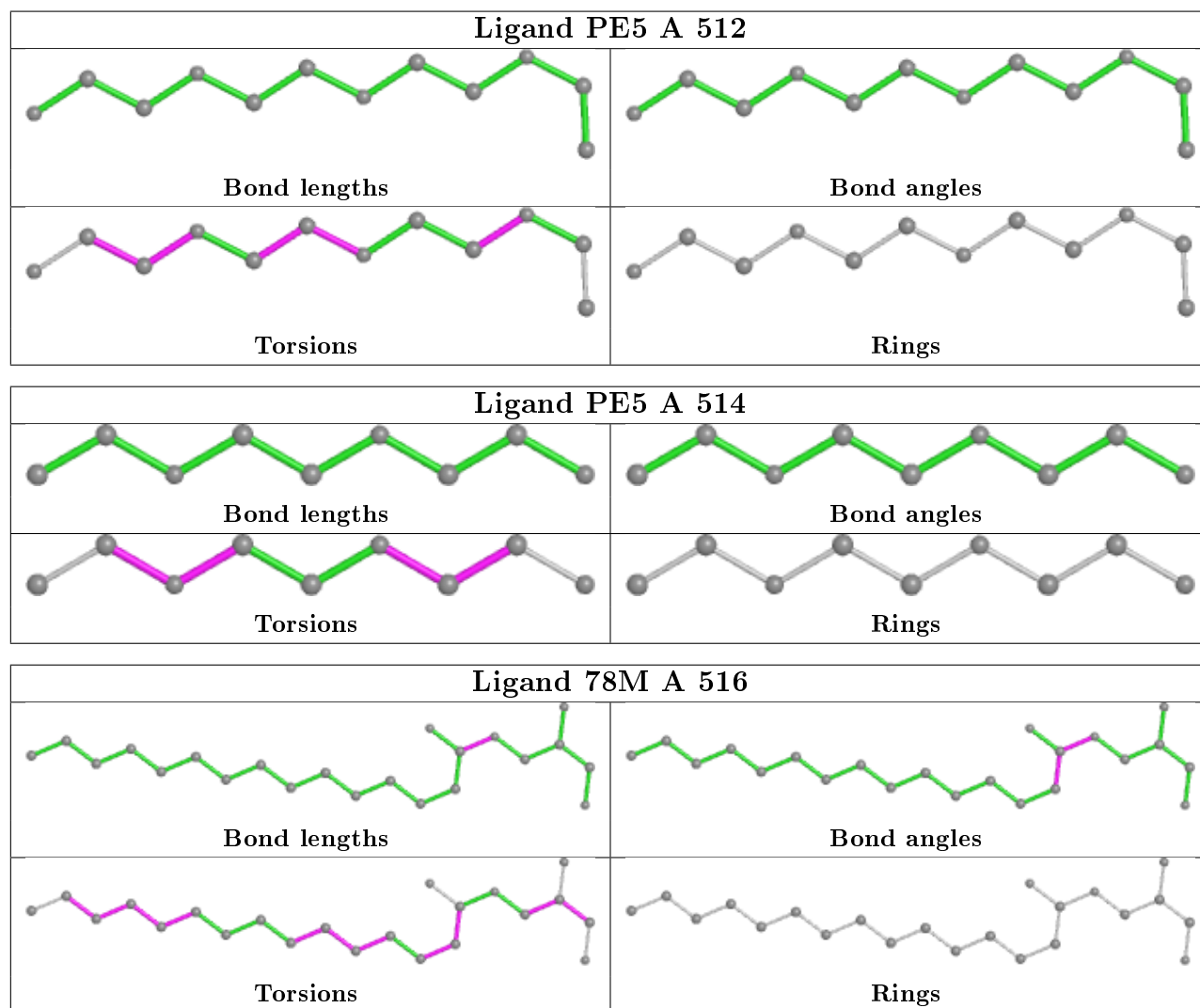
Mol	Chain	Res	Type	Atoms
4	A	505	LDA	N1-C1-C2-C3
7	A	518	MES	C7-C8-S-O2S
4	A	506	LDA	N1-C1-C2-C3
7	A	519	MES	C8-C7-N4-C5
7	A	519	MES	C7-C8-S-O2S

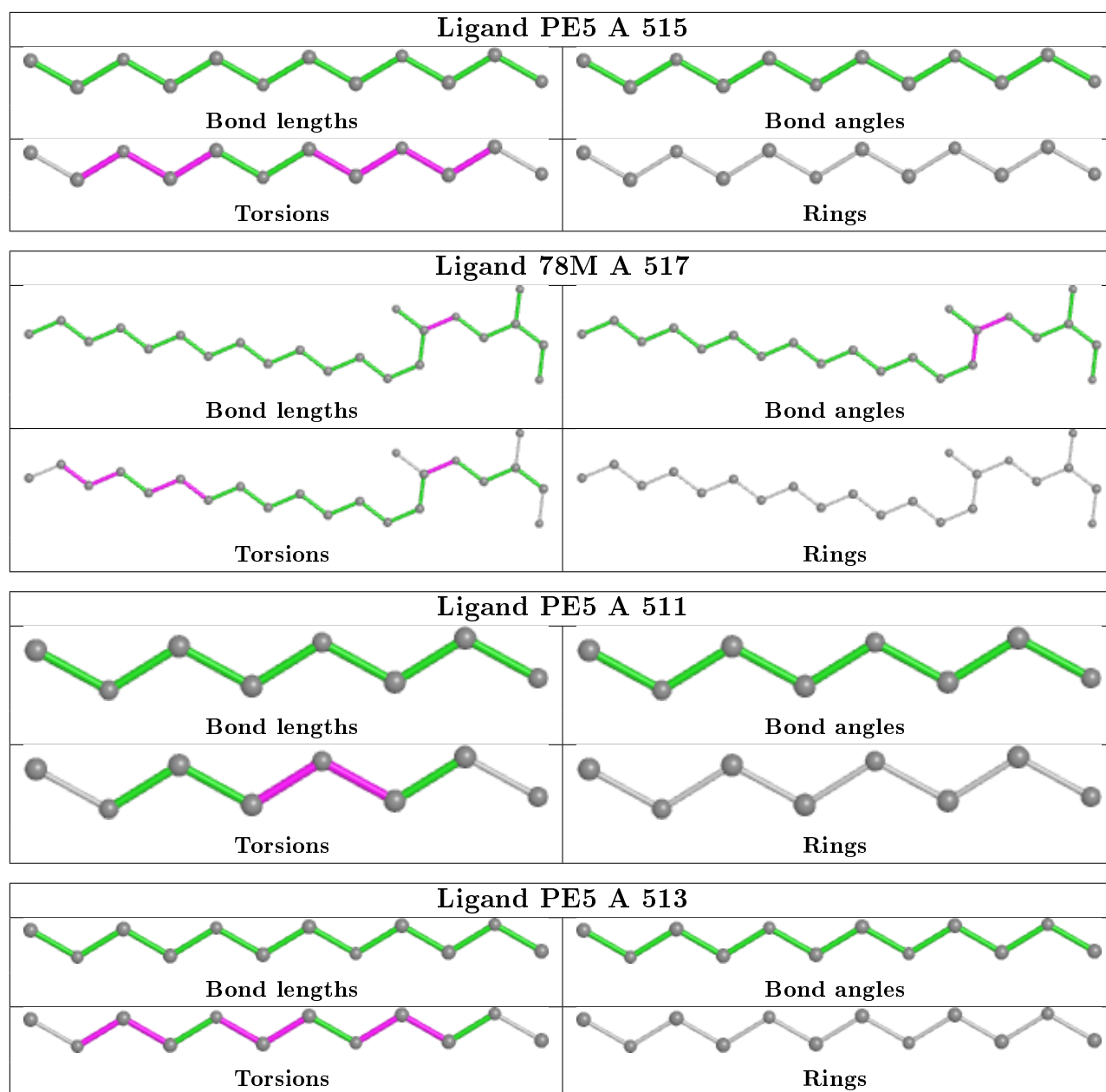
There are no ring outliers.

6 monomers are involved in 7 short contacts:

Mol	Chain	Res	Type	Clashes	Symm-Clashes
4	A	505	LDA	1	0
4	A	508	LDA	1	0
4	A	509	LDA	1	0
6	A	517	78M	1	0
5	A	511	PE5	2	0
5	A	513	PE5	1	0

The following is a two-dimensional graphical depiction of Mogul quality analysis of bond lengths, bond angles, torsion angles, and ring geometry for all instances of the Ligand of Interest. In addition, ligands with molecular weight > 250 and outliers as shown on the validation Tables will also be included. For torsion angles, if less than 5% of the Mogul distribution of torsion angles is within 10 degrees of the torsion angle in question, then that torsion angle is considered an outlier. Any bond that is central to one or more torsion angles identified as an outlier by Mogul will be highlighted in the graph. For rings, the root-mean-square deviation (RMSD) between the ring in question and similar rings identified by Mogul is calculated over all ring torsion angles. If the average RMSD is greater than 60 degrees and the minimal RMSD between the ring in question and any Mogul-identified rings is also greater than 60 degrees, then that ring is considered an outlier. The outliers are highlighted in purple. The color gray indicates Mogul did not find sufficient equivalents in the CSD to analyse the geometry.





5.7 Other polymers [\(i\)](#)

There are no such residues in this entry.

5.8 Polymer linkage issues [\(i\)](#)

There are no chain breaks in this entry.

6 Fit of model and data [i](#)

6.1 Protein, DNA and RNA chains [i](#)

In the following table, the column labelled ‘#RSRZ> 2’ contains the number (and percentage) of RSRZ outliers, followed by percent RSRZ outliers for the chain as percentile scores relative to all X-ray entries and entries of similar resolution. The OWAB column contains the minimum, median, 95th percentile and maximum values of the occupancy-weighted average B-factor per residue. The column labelled ‘Q< 0.9’ lists the number of (and percentage) of residues with an average occupancy less than 0.9.

Mol	Chain	Analysed	<RSRZ>	#RSRZ>2	OWAB(Å ²)	Q<0.9
1	A	403/490 (82%)	0.61	51 (12%) 3 3	29, 46, 72, 96	0

The worst 5 of 51 RSRZ outliers are listed below:

Mol	Chain	Res	Type	RSRZ
1	A	293	VAL	7.2
1	A	81	TRP	6.2
1	A	244	LEU	5.8
1	A	122	ASP	5.8
1	A	294	ASP	4.9

6.2 Non-standard residues in protein, DNA, RNA chains [i](#)

There are no non-standard protein/DNA/RNA residues in this entry.

6.3 Carbohydrates [i](#)

There are no monosaccharides in this entry.

6.4 Ligands [i](#)

In the following table, the Atoms column lists the number of modelled atoms in the group and the number defined in the chemical component dictionary. The B-factors column lists the minimum, median, 95th percentile and maximum values of B factors of atoms in the group. The column labelled ‘Q< 0.9’ lists the number of atoms with occupancy less than 0.9.

Mol	Type	Chain	Res	Atoms	RSCC	RSR	B-factors(Å ²)	Q<0.9
4	LDA	A	507	16/16	0.52	0.36	65,74,92,93	0
4	LDA	A	505	16/16	0.62	0.31	52,58,91,91	0

Continued on next page...

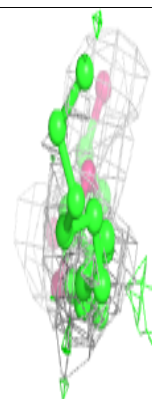
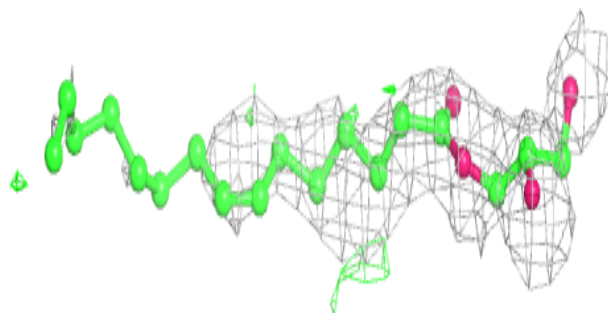
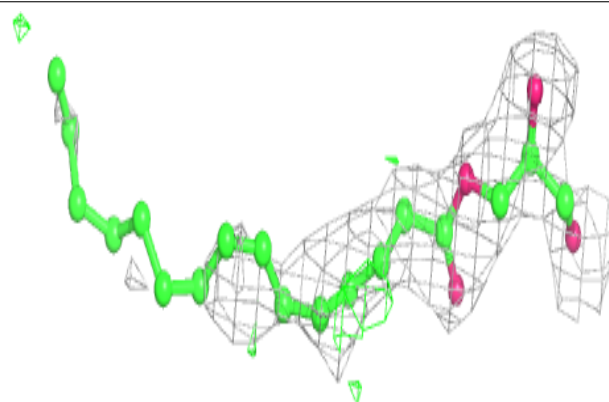
Continued from previous page...

Mol	Type	Chain	Res	Atoms	RSCC	RSR	B-factors(\AA^2)	Q<0.9
6	78M	A	516	22/22	0.63	0.42	87,93,95,95	0
4	LDA	A	508	16/16	0.67	0.32	56,72,85,87	0
4	LDA	A	509	16/16	0.70	0.29	57,67,71,71	0
5	PE5	A	513	12/27	0.75	0.30	55,60,75,77	0
5	PE5	A	515	12/27	0.76	0.29	57,69,71,72	0
4	LDA	A	506	16/16	0.80	0.23	60,75,84,84	0
5	PE5	A	514	9/27	0.81	0.64	64,66,68,68	0
5	PE5	A	512	12/27	0.81	0.23	59,64,67,68	0
4	LDA	A	510	13/16	0.82	0.21	58,66,71,72	0
4	LDA	A	504	16/16	0.84	0.29	44,52,64,65	0
6	78M	A	517	22/22	0.87	0.16	57,72,74,75	0
7	MES	A	519	12/12	0.90	0.16	61,65,66,68	0
2	NA	A	502	1/1	0.90	0.21	67,67,67,67	0
3	CA	A	503	1/1	0.92	0.21	48,48,48,48	0
7	MES	A	518	12/12	0.95	0.18	50,54,57,58	0
2	NA	A	501	1/1	0.95	0.10	25,25,25,25	0
5	PE5	A	511	8/27	0.96	0.29	38,40,54,55	0

The following is a graphical depiction of the model fit to experimental electron density of all instances of the Ligand of Interest. In addition, ligands with molecular weight > 250 and outliers as shown on the geometry validation Tables will also be included. Each fit is shown from different orientation to approximate a three-dimensional view.

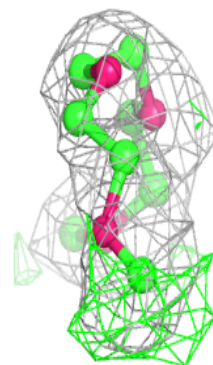
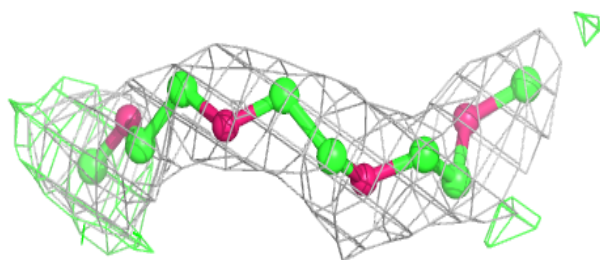
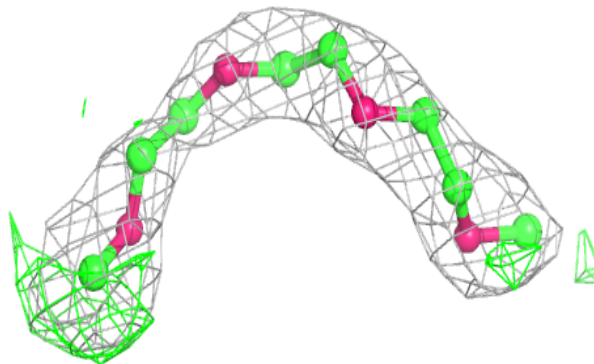
Electron density around 78M A 516:

2mF_o-DF_c (at 0.7 rmsd) in gray
mF_o-DF_c (at 3 rmsd) in purple (negative)
and green (positive)



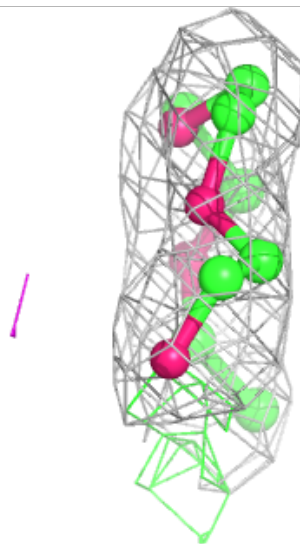
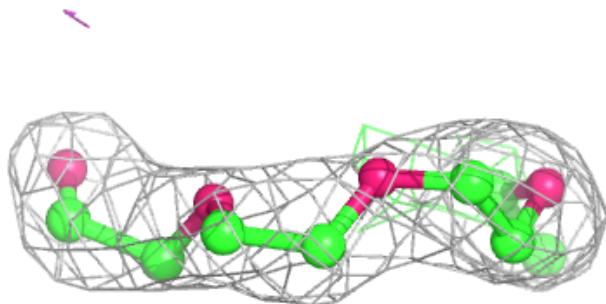
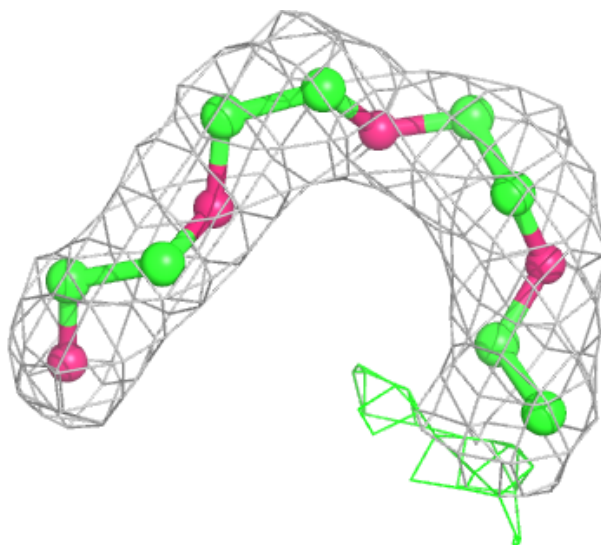
Electron density around PE5 A 513:

$2mF_o-DF_c$ (at 0.7 rmsd) in gray
 mF_o-DF_c (at 3 rmsd) in purple (negative)
and green (positive)



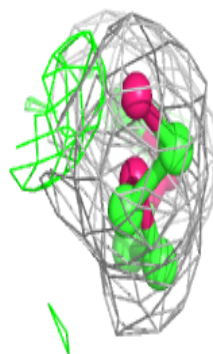
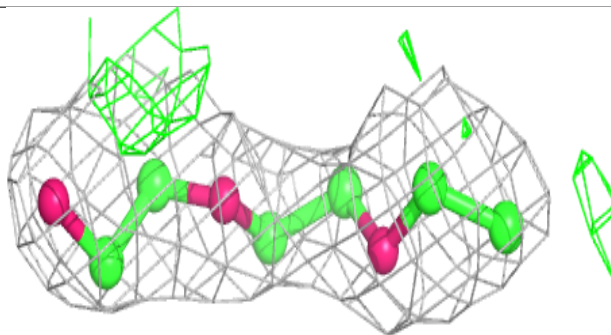
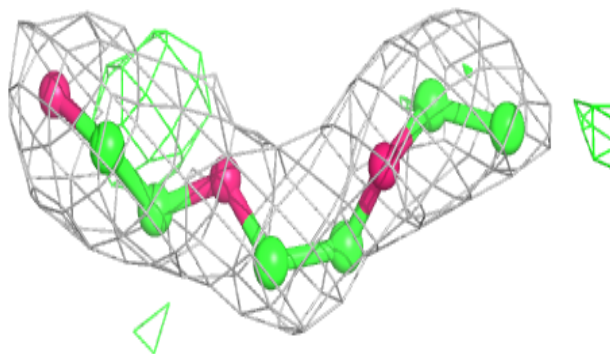
Electron density around PE5 A 515:

$2mF_o-DF_c$ (at 0.7 rmsd) in gray
 mF_o-DF_c (at 3 rmsd) in purple (negative)
and green (positive)

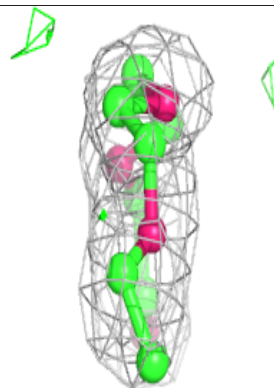
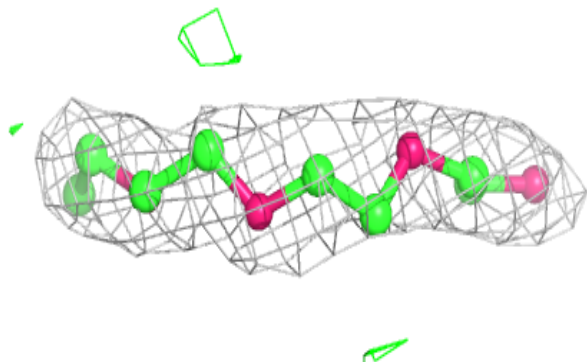
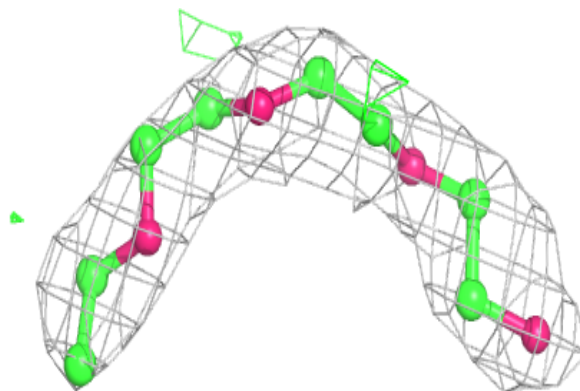


Electron density around PE5 A 514:

$2mF_o-DF_c$ (at 0.7 rmsd) in gray
 mF_o-DF_c (at 3 rmsd) in purple (negative)
and green (positive)

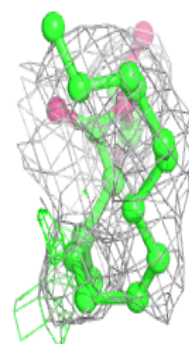
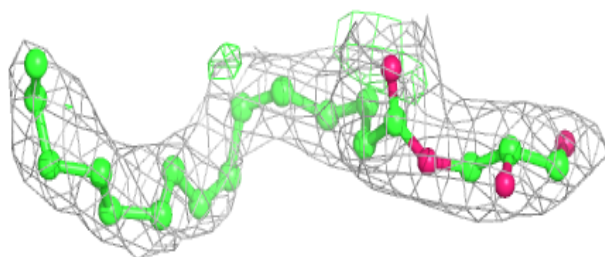
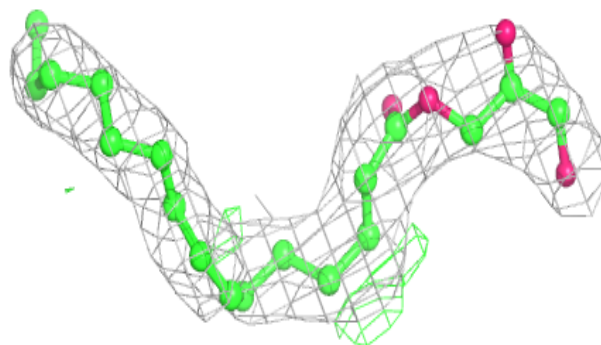
**Electron density around PE5 A 512:**

$2mF_o-DF_c$ (at 0.7 rmsd) in gray
 mF_o-DF_c (at 3 rmsd) in purple (negative)
and green (positive)

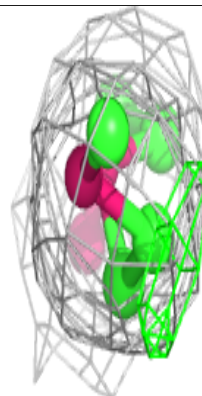
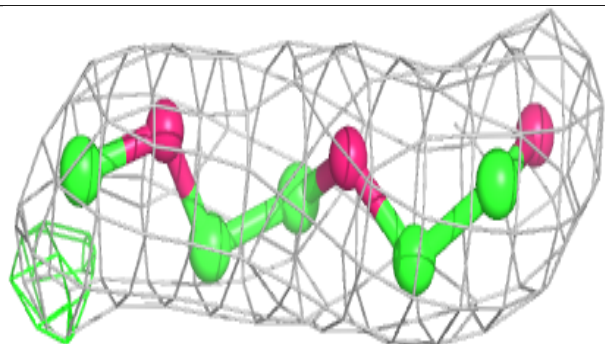
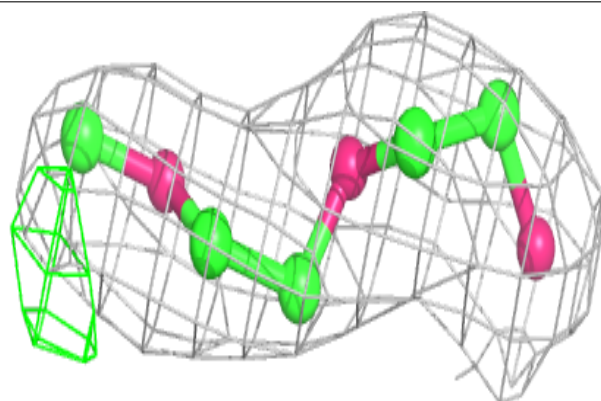


Electron density around 78M A 517:

$2mF_o-DF_c$ (at 0.7 rmsd) in gray
 mF_o-DF_c (at 3 rmsd) in purple (negative)
and green (positive)

**Electron density around PE5 A 511:**

$2mF_o-DF_c$ (at 0.7 rmsd) in gray
 mF_o-DF_c (at 3 rmsd) in purple (negative)
and green (positive)



6.5 Other polymers [i](#)

There are no such residues in this entry.