



# Full wwPDB X-ray Structure Validation Report ⓘ

May 13, 2020 – 06:02 pm BST

PDB ID : 5D5L  
Title : PreQ1-II riboswitch with an engineered G-U wobble pair bound to Cs+  
Authors : Wedekind, J.E.; Liberman, J.A.; Salim, M.  
Deposited on : 2015-08-10  
Resolution : 2.50 Å(reported)

This is a Full wwPDB X-ray Structure Validation Report for a publicly released PDB entry.

We welcome your comments at [validation@mail.wwpdb.org](mailto:validation@mail.wwpdb.org)

A user guide is available at

<https://www.wwpdb.org/validation/2017/XrayValidationReportHelp>

with specific help available everywhere you see the ⓘ symbol.

---

The following versions of software and data (see [references ⓘ](#)) were used in the production of this report:

MolProbity : 4.02b-467  
Mogul : 1.8.5 (274361), CSD as541be (2020)  
Xtriage (Phenix) : 1.13  
EDS : 2.11  
Percentile statistics : 20191225.v01 (using entries in the PDB archive December 25th 2019)  
Refmac : 5.8.0158  
CCP4 : 7.0.044 (Gargrove)  
Ideal geometry (proteins) : Engh & Huber (2001)  
Ideal geometry (DNA, RNA) : Parkinson et al. (1996)  
Validation Pipeline (wwPDB-VP) : 2.11

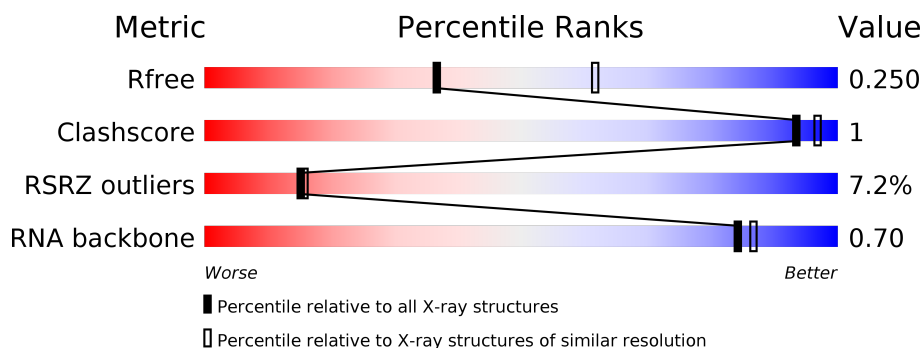
# 1 Overall quality at a glance ⓘ

The following experimental techniques were used to determine the structure:

*X-RAY DIFFRACTION*

The reported resolution of this entry is 2.50 Å.

Percentile scores (ranging between 0-100) for global validation metrics of the entry are shown in the following graphic. The table shows the number of entries on which the scores are based.



Metric	Whole archive (#Entries)	Similar resolution (#Entries, resolution range(Å))
$R_{free}$	130704	4661 (2.50-2.50)
Clashscore	141614	5346 (2.50-2.50)
RSRZ outliers	127900	4559 (2.50-2.50)
RNA backbone	3102	1008 (2.84-2.16)

The table below summarises the geometric issues observed across the polymeric chains and their fit to the electron density. The red, orange, yellow and green segments on the lower bar indicate the fraction of residues that contain outliers for  $\geq 3$ , 2, 1 and 0 types of geometric quality criteria respectively. A grey segment represents the fraction of residues that are not modelled. The numeric value for each fraction is indicated below the corresponding segment, with a dot representing fractions  $\leq 5\%$ . The upper red bar (where present) indicates the fraction of residues that have poor fit to the electron density. The numeric value is given above the bar.

Mol	Chain	Length	Quality of chain
1	A	77	<div> <div>3%</div> <div>94%</div> <div>• •</div> </div>
1	B	77	<div> <div>8%</div> <div>84%</div> <div>14%</div> <div>•</div> </div>
1	C	77	<div> <div>13%</div> <div>86%</div> <div>12%</div> <div>•</div> </div>
1	D	77	<div> <div>5%</div> <div>90%</div> <div>6%</div> <div>•</div> </div>

## 2 Entry composition

There are 5 unique types of molecules in this entry. The entry contains 10199 atoms, of which 3328 are hydrogens and 0 are deuteriums.

In the tables below, the ZeroOcc column contains the number of atoms modelled with zero occupancy, the AltConf column contains the number of residues with at least one atom in alternate conformation and the Trace column contains the number of residues modelled with at most 2 atoms.

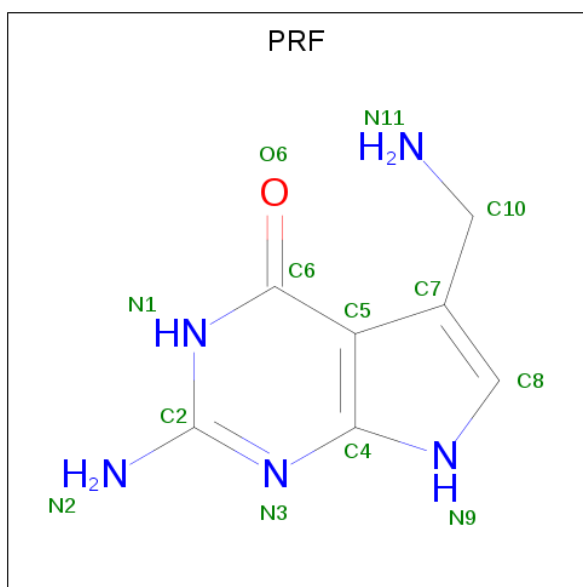
- Molecule 1 is a RNA chain called PreQ1-II riboswitch.

Mol	Chain	Residues	Atoms						ZeroOcc	AltConf	Trace
1	A	77	Total	C	H	N	O	P	0	0	0
			2465	731	821	286	548	79			
1	B	77	Total	C	H	N	O	P	0	0	0
			2467	731	823	286	548	79			
1	C	77	Total	C	H	N	O	P	0	0	0
			2468	731	824	286	548	79			
1	D	77	Total	C	H	N	O	P	0	0	0
			2468	731	824	286	548	79			

- Molecule 2 is CESIUM ION (three-letter code: CS) (formula: Cs).

Mol	Chain	Residues	Atoms		ZeroOcc	AltConf
2	B	8	Total	Cs	0	0
			8	8		
2	A	16	Total	Cs	0	0
			16	16		
2	D	5	Total	Cs	0	0
			5	5		
2	C	3	Total	Cs	0	0
			3	3		

- Molecule 3 is 7-DEAZA-7-AMINOMETHYL-GUANINE (three-letter code: PRF) (formula: C<sub>7</sub>H<sub>9</sub>N<sub>5</sub>O).



Mol	Chain	Residues	Atoms					ZeroOcc	AltConf
3	A	1	Total	C	H	N	O	0	0
			22	7	9	5	1		
3	B	1	Total	C	H	N	O	0	0
			22	7	9	5	1		
3	C	1	Total	C	H	N	O	0	0
			22	7	9	5	1		
3	D	1	Total	C	H	N	O	0	0
			22	7	9	5	1		

- Molecule 4 is MAGNESIUM ION (three-letter code: MG) (formula: Mg).

Mol	Chain	Residues	Atoms		ZeroOcc	AltConf
4	B	3	Total	Mg	0	0
			3	3		
4	A	6	Total	Mg	0	0
			6	6		
4	D	3	Total	Mg	0	0
			3	3		
4	C	3	Total	Mg	0	0
			3	3		

- Molecule 5 is water.

Mol	Chain	Residues	Atoms		ZeroOcc	AltConf
5	A	63	Total	O	0	0
			63	63		

*Continued on next page...*

*Continued from previous page...*

Mol	Chain	Residues	Atoms		ZeroOcc	AltConf
5	B	54	Total 54	O 54	0	0
5	C	41	Total 41	O 41	0	0
5	D	38	Total 38	O 38	0	0

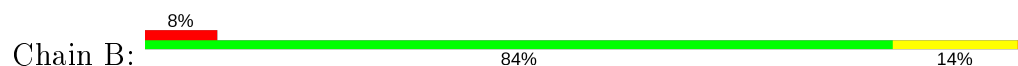
### 3 Residue-property plots [i](#)

These plots are drawn for all protein, RNA and DNA chains in the entry. The first graphic for a chain summarises the proportions of the various outlier classes displayed in the second graphic. The second graphic shows the sequence view annotated by issues in geometry and electron density. Residues are color-coded according to the number of geometric quality criteria for which they contain at least one outlier: green = 0, yellow = 1, orange = 2 and red = 3 or more. A red dot above a residue indicates a poor fit to the electron density ( $RSRZ > 2$ ). Stretches of 2 or more consecutive residues without any outlier are shown as a green connector. Residues present in the sample, but not in the model, are shown in grey.

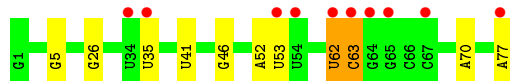
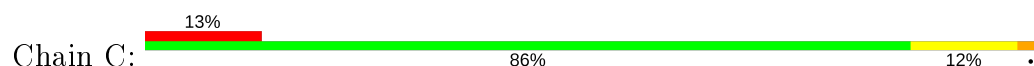
- Molecule 1: PreQ1-II riboswitch



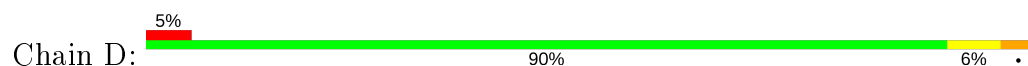
- Molecule 1: PreQ1-II riboswitch



- Molecule 1: PreQ1-II riboswitch



- Molecule 1: PreQ1-II riboswitch



## 4 Data and refinement statistics

Property	Value	Source
Space group	P 1 21 1	Depositor
Cell constants a, b, c, $\alpha$ , $\beta$ , $\gamma$	86.36 Å 57.83 Å 99.49 Å 90.00° 107.64° 90.00°	Depositor
Resolution (Å)	49.37 – 2.50 49.37 – 2.49	Depositor EDS
% Data completeness (in resolution range)	87.7 (49.37-2.50) 84.5 (49.37-2.49)	Depositor EDS
$R_{merge}$	0.07	Depositor
$R_{sym}$	(Not available)	Depositor
$\langle I/\sigma(I) \rangle$ <sup>1</sup>	1.34 (at 2.48 Å)	Xtriage
Refinement program	PHENIX (phenix.refine: 1.9_1692)	Depositor
R, $R_{free}$	0.199 , 0.247 0.205 , 0.250	Depositor DCC
$R_{free}$ test set	1968 reflections (6.55%)	wwPDB-VP
Wilson B-factor (Å <sup>2</sup> )	48.7	Xtriage
Anisotropy	0.181	Xtriage
Bulk solvent $k_{sol}$ (e/Å <sup>3</sup> ), $B_{sol}$ (Å <sup>2</sup> )	0.32 , 43.4	EDS
L-test for twinning <sup>2</sup>	$\langle  L  \rangle = 0.50$ , $\langle L^2 \rangle = 0.34$	Xtriage
Estimated twinning fraction	No twinning to report.	Xtriage
$F_o, F_c$ correlation	0.95	EDS
Total number of atoms	10199	wwPDB-VP
Average B, all atoms (Å <sup>2</sup> )	69.0	wwPDB-VP

Xtriage's analysis on translational NCS is as follows: *The analyses of the Patterson function reveals a significant off-origin peak that is 45.10 % of the origin peak, indicating pseudo-translational symmetry. The chance of finding a peak of this or larger height randomly in a structure without pseudo-translational symmetry is equal to 1.3869e-04. The detected translational NCS is most likely also responsible for the elevated intensity ratio.*

<sup>1</sup> Intensities estimated from amplitudes.

<sup>2</sup> Theoretical values of  $\langle |L| \rangle$ ,  $\langle L^2 \rangle$  for acentric reflections are 0.5, 0.333 respectively for untwinned datasets, and 0.375, 0.2 for perfectly twinned datasets.

## 5 Model quality [i](#)

### 5.1 Standard geometry [i](#)

Bond lengths and bond angles in the following residue types are not validated in this section: GTP, CS, MG, PRF

The Z score for a bond length (or angle) is the number of standard deviations the observed value is removed from the expected value. A bond length (or angle) with  $|Z| > 5$  is considered an outlier worth inspection. RMSZ is the root-mean-square of all Z scores of the bond lengths (or angles).

Mol	Chain	Bond lengths		Bond angles	
		RMSZ	$\# Z  > 5$	RMSZ	$\# Z  > 5$
1	A	0.23	0/1800	0.75	1/2801 (0.0%)
1	B	0.21	0/1800	0.72	0/2801
1	C	0.20	0/1800	0.71	0/2801
1	D	0.20	0/1800	0.72	0/2801
All	All	0.21	0/7200	0.72	1/11204 (0.0%)

There are no bond length outliers.

All (1) bond angle outliers are listed below:

Mol	Chain	Res	Type	Atoms	Z	Observed(°)	Ideal(°)
1	A	34	U	OP1-P-O3'	5.50	117.31	105.20

There are no chirality outliers.

There are no planarity outliers.

### 5.2 Too-close contacts [i](#)

In the following table, the Non-H and H(model) columns list the number of non-hydrogen atoms and hydrogen atoms in the chain respectively. The H(added) column lists the number of hydrogen atoms added and optimized by MolProbity. The Clashes column lists the number of clashes within the asymmetric unit, whereas Symm-Clashes lists symmetry related clashes.

Mol	Chain	Non-H	H(model)	H(added)	Clashes	Symm-Clashes
1	A	1644	821	823	3	0
1	B	1644	823	825	3	0
1	C	1644	824	826	4	0
1	D	1644	824	826	4	0
2	A	16	0	0	0	0
2	B	8	0	0	0	0

*Continued on next page...*



*Continued from previous page...*

Mol	Chain	Non-H	H(model)	H(added)	Clashes	Symm-Clashes
2	C	3	0	0	0	0
2	D	5	0	0	0	0
3	A	13	9	9	0	0
3	B	13	9	9	0	0
3	C	13	9	9	0	0
3	D	13	9	9	0	0
4	A	6	0	0	0	0
4	B	3	0	0	0	0
4	C	3	0	0	0	0
4	D	3	0	0	0	0
5	A	63	0	0	0	0
5	B	54	0	0	0	0
5	C	41	0	0	0	0
5	D	38	0	0	1	0
All	All	6871	3328	3336	13	0

The all-atom clashscore is defined as the number of clashes found per 1000 atoms (including hydrogen atoms). The all-atom clashscore for this structure is 1.

All (13) close contacts within the same asymmetric unit are listed below, sorted by their clash magnitude.

Atom-1	Atom-2	Interatomic distance (Å)	Clash overlap (Å)
1:C:41:U:O2'	1:C:70:A:N1	2.30	0.64
1:D:77:A:OP2	5:D:201:HOH:O	2.16	0.60
1:A:34:U:H4'	1:A:35:U:OP1	2.04	0.55
1:A:35:U:C6	1:A:35:U:OP2	2.59	0.55
1:C:52:A:H5'	1:C:53:U:OP2	2.07	0.54
1:A:35:U:OP2	1:A:35:U:H3'	2.08	0.54
1:B:28:U:H4'	1:C:46:G:H5'	1.92	0.51
1:B:28:U:H2'	1:B:29:A:C8	2.48	0.49
1:D:35:U:C4'	1:D:36:U:OP2	2.62	0.47
1:D:35:U:C1'	1:D:36:U:OP2	2.67	0.42
1:C:62:U:OP2	1:C:63:C:H5	2.03	0.41
1:B:62:U:O2'	1:B:63:C:H5'	2.20	0.41
1:D:35:U:H1'	1:D:36:U:OP2	2.21	0.40

There are no symmetry-related clashes.

## 5.3 Torsion angles [i](#)

### 5.3.1 Protein backbone [i](#)

There are no protein molecules in this entry.

### 5.3.2 Protein sidechains [i](#)

There are no protein molecules in this entry.

### 5.3.3 RNA [i](#)

Mol	Chain	Analysed	Backbone Outliers	Pucker Outliers
1	A	75/77 (97%)	5 (6%)	1 (1%)
1	B	75/77 (97%)	9 (12%)	0
1	C	75/77 (97%)	6 (8%)	0
1	D	75/77 (97%)	8 (10%)	1 (1%)
All	All	300/308 (97%)	28 (9%)	2 (0%)

All (28) RNA backbone outliers are listed below:

Mol	Chain	Res	Type
1	A	30	C
1	A	34	U
1	A	35	U
1	A	54	U
1	A	77	A
1	B	30	C
1	B	34	U
1	B	35	U
1	B	49	G
1	B	53	U
1	B	54	U
1	B	63	C
1	B	64	G
1	B	77	A
1	C	5	G
1	C	26	G
1	C	35	U
1	C	62	U
1	C	63	C
1	C	77	A
1	D	30	C

*Continued on next page...*

*Continued from previous page...*

Mol	Chain	Res	Type
1	D	35	U
1	D	36	U
1	D	49	G
1	D	51	U
1	D	54	U
1	D	64	G
1	D	77	A

All (2) RNA pucker outliers are listed below:

Mol	Chain	Res	Type
1	A	34	U
1	D	35	U

## 5.4 Non-standard residues in protein, DNA, RNA chains [i](#)

There are no non-standard protein/DNA/RNA residues in this entry.

## 5.5 Carbohydrates [i](#)

There are no carbohydrates in this entry.

## 5.6 Ligand geometry [i](#)

Of 51 ligands modelled in this entry, 47 are monoatomic - leaving 4 for Mogul analysis.

In the following table, the Counts columns list the number of bonds (or angles) for which Mogul statistics could be retrieved, the number of bonds (or angles) that are observed in the model and the number of bonds (or angles) that are defined in the Chemical Component Dictionary. The Link column lists molecule types, if any, to which the group is linked. The Z score for a bond length (or angle) is the number of standard deviations the observed value is removed from the expected value. A bond length (or angle) with  $|Z| > 2$  is considered an outlier worth inspection. RMSZ is the root-mean-square of all Z scores of the bond lengths (or angles).

Mol	Type	Chain	Res	Link	Bond lengths			Bond angles		
					Counts	RMSZ	# Z  > 2	Counts	RMSZ	# Z  > 2
3	PRF	A	117	-	13,14,14	2.70	6 (46%)	9,20,20	3.67	5 (55%)
3	PRF	B	109	-	13,14,14	2.72	6 (46%)	9,20,20	3.57	5 (55%)
3	PRF	D	106	-	13,14,14	2.70	7 (53%)	9,20,20	3.71	5 (55%)
3	PRF	C	104	-	13,14,14	2.69	6 (46%)	9,20,20	3.75	5 (55%)

In the following table, the Chirals column lists the number of chiral outliers, the number of chiral centers analysed, the number of these observed in the model and the number defined in the Chemical Component Dictionary. Similar counts are reported in the Torsion and Rings columns. '-' means no outliers of that kind were identified.

Mol	Type	Chain	Res	Link	Chirals	Torsions	Rings
3	PRF	A	117	-	-	0/0/2/2	0/2/2/2
3	PRF	B	109	-	-	0/0/2/2	0/2/2/2
3	PRF	D	106	-	-	0/0/2/2	0/2/2/2
3	PRF	C	104	-	-	0/0/2/2	0/2/2/2

All (25) bond length outliers are listed below:

Mol	Chain	Res	Type	Atoms	Z	Observed(Å)	Ideal(Å)
3	C	104	PRF	O6-C6	5.35	1.38	1.24
3	A	117	PRF	C2-N2	5.33	1.44	1.33
3	B	109	PRF	O6-C6	5.30	1.37	1.24
3	D	106	PRF	O6-C6	5.29	1.37	1.24
3	A	117	PRF	O6-C6	5.24	1.37	1.24
3	B	109	PRF	C2-N2	5.23	1.44	1.33
3	D	106	PRF	C2-N2	5.22	1.44	1.33
3	C	104	PRF	C2-N2	5.19	1.44	1.33
3	A	117	PRF	C2-N1	3.60	1.41	1.35
3	C	104	PRF	C2-N1	3.54	1.41	1.35
3	D	106	PRF	C2-N1	3.49	1.41	1.35
3	B	109	PRF	C2-N1	3.48	1.41	1.35
3	B	109	PRF	C6-N1	3.23	1.38	1.33
3	A	117	PRF	C6-N1	3.16	1.38	1.33
3	D	106	PRF	C6-N1	3.14	1.38	1.33
3	C	104	PRF	C6-N1	3.10	1.38	1.33
3	B	109	PRF	C7-C5	2.74	1.45	1.41
3	A	117	PRF	C7-C5	2.59	1.45	1.41
3	D	106	PRF	C7-C5	2.53	1.45	1.41
3	C	104	PRF	C7-C5	2.48	1.45	1.41
3	C	104	PRF	C4-N9	2.17	1.38	1.34
3	D	106	PRF	C4-N9	2.17	1.38	1.34
3	B	109	PRF	C4-N9	2.06	1.38	1.34
3	D	106	PRF	C4-N3	2.05	1.40	1.36
3	A	117	PRF	C4-N9	2.02	1.38	1.34

All (20) bond angle outliers are listed below:

Mol	Chain	Res	Type	Atoms	Z	Observed(°)	Ideal(°)
3	C	104	PRF	C6-C5-C4	7.02	118.97	115.01

*Continued on next page...*

*Continued from previous page...*

Mol	Chain	Res	Type	Atoms	Z	Observed(°)	Ideal(°)
3	D	106	PRF	C6-C5-C4	6.90	118.91	115.01
3	A	117	PRF	C6-C5-C4	6.76	118.83	115.01
3	B	109	PRF	C6-C5-C4	6.33	118.59	115.01
3	A	117	PRF	C2-N3-C4	5.21	121.31	115.36
3	C	104	PRF	C2-N3-C4	5.13	121.22	115.36
3	B	109	PRF	C2-N3-C4	5.11	121.19	115.36
3	D	106	PRF	C2-N3-C4	5.10	121.18	115.36
3	C	104	PRF	C5-C6-N1	-5.06	119.60	124.09
3	D	106	PRF	C5-C6-N1	-4.89	119.75	124.09
3	B	109	PRF	C5-C6-N1	-4.82	119.81	124.09
3	A	117	PRF	C5-C6-N1	-4.78	119.85	124.09
3	D	106	PRF	N3-C2-N1	-4.09	121.76	127.22
3	A	117	PRF	N3-C2-N1	-4.06	121.80	127.22
3	B	109	PRF	N3-C2-N1	-4.06	121.81	127.22
3	C	104	PRF	N3-C2-N1	-4.03	121.85	127.22
3	D	106	PRF	C6-N1-C2	2.39	119.72	115.93
3	B	109	PRF	C6-N1-C2	2.36	119.69	115.93
3	C	104	PRF	C6-N1-C2	2.36	119.68	115.93
3	A	117	PRF	C6-N1-C2	2.24	119.49	115.93

There are no chirality outliers.

There are no torsion outliers.

There are no ring outliers.

No monomer is involved in short contacts.

## 5.7 Other polymers [i](#)

There are no such residues in this entry.

## 5.8 Polymer linkage issues [i](#)

There are no chain breaks in this entry.

## 6 Fit of model and data ⓘ

### 6.1 Protein, DNA and RNA chains ⓘ

In the following table, the column labelled ‘#RSRZ> 2’ contains the number (and percentage) of RSRZ outliers, followed by percent RSRZ outliers for the chain as percentile scores relative to all X-ray entries and entries of similar resolution. The OWAB column contains the minimum, median, 95<sup>th</sup> percentile and maximum values of the occupancy-weighted average B-factor per residue. The column labelled ‘Q< 0.9’ lists the number of (and percentage) of residues with an average occupancy less than 0.9.

Mol	Chain	Analysed	<RSRZ>	#RSRZ>2	OWAB(Å <sup>2</sup> )	Q<0.9
1	A	76/77 (98%)	0.04	2 (2%) 56 59	28, 47, 77, 132	0
1	B	76/77 (98%)	0.46	6 (7%) 12 12	43, 57, 130, 157	0
1	C	76/77 (98%)	0.52	10 (13%) 3 3	29, 65, 164, 202	0
1	D	76/77 (98%)	0.28	4 (5%) 26 28	38, 60, 138, 176	0
All	All	304/308 (98%)	0.33	22 (7%) 15 16	28, 58, 132, 202	0

All (22) RSRZ outliers are listed below:

Mol	Chain	Res	Type	RSRZ
1	B	77	A	6.2
1	D	63	C	5.2
1	C	54	U	5.2
1	C	53	U	4.8
1	C	64	G	4.5
1	D	34	U	4.3
1	C	62	U	4.1
1	B	67	C	4.1
1	B	62	U	3.9
1	C	65	G	3.9
1	B	63	C	3.6
1	C	63	C	3.5
1	D	54	U	3.3
1	C	34	U	2.9
1	A	77	A	2.8
1	A	34	U	2.6
1	D	53	U	2.6
1	C	67	C	2.4
1	B	34	U	2.2
1	B	66	C	2.2
1	C	35	U	2.1
1	C	77	A	2.1

## 6.2 Non-standard residues in protein, DNA, RNA chains [i](#)

There are no non-standard protein/DNA/RNA residues in this entry.

## 6.3 Carbohydrates [i](#)

There are no carbohydrates in this entry.

## 6.4 Ligands [i](#)

In the following table, the Atoms column lists the number of modelled atoms in the group and the number defined in the chemical component dictionary. The B-factors column lists the minimum, median, 95<sup>th</sup> percentile and maximum values of B factors of atoms in the group. The column labelled 'Q< 0.9' lists the number of atoms with occupancy less than 0.9.

Mol	Type	Chain	Res	Atoms	RSCC	RSR	B-factors( $\text{\AA}^2$ )	Q<0.9
4	MG	A	119	1/1	0.49	0.14	62,62,62,62	0
4	MG	C	107	1/1	0.55	0.24	112,112,112,112	0
4	MG	D	108	1/1	0.75	0.17	82,82,82,82	0
4	MG	A	120	1/1	0.78	0.09	49,49,49,49	0
4	MG	D	107	1/1	0.79	0.11	57,57,57,57	0
4	MG	A	123	1/1	0.79	0.13	60,60,60,60	0
4	MG	B	112	1/1	0.79	0.17	61,61,61,61	0
2	CS	A	110	1/1	0.80	0.10	94,94,94,94	1
2	CS	B	107	1/1	0.83	0.29	70,70,70,70	1
2	CS	D	104	1/1	0.86	0.17	84,84,84,84	1
4	MG	A	118	1/1	0.88	0.16	108,108,108,108	0
2	CS	B	105	1/1	0.89	0.36	82,82,82,82	1
2	CS	A	104	1/1	0.90	0.13	85,85,85,85	1
4	MG	C	106	1/1	0.90	0.21	100,100,100,100	0
4	MG	A	122	1/1	0.91	0.29	51,51,51,51	0
2	CS	B	106	1/1	0.91	0.25	122,122,122,122	1
3	PRF	B	109	13/13	0.91	0.37	63,67,79,85	0
4	MG	B	111	1/1	0.91	0.10	55,55,55,55	0
4	MG	B	110	1/1	0.92	0.11	75,75,75,75	0
2	CS	B	108	1/1	0.92	0.33	64,64,64,64	1
2	CS	A	103	1/1	0.92	0.36	62,62,62,62	1
2	CS	A	107	1/1	0.92	0.19	84,84,84,84	1
2	CS	A	111	1/1	0.93	0.23	86,86,86,86	1
2	CS	D	105	1/1	0.94	0.06	103,103,103,103	1
2	CS	C	103	1/1	0.94	0.36	68,68,68,68	1
2	CS	A	113	1/1	0.94	0.19	57,57,57,57	1
4	MG	C	105	1/1	0.94	0.09	36,36,36,36	0

*Continued on next page...*

*Continued from previous page...*

Mol	Type	Chain	Res	Atoms	RSCC	RSR	B-factors( $\text{\AA}^2$ )	Q<0.9
2	CS	D	103	1/1	0.95	0.35	70,70,70,70	1
2	CS	B	104	1/1	0.95	0.21	70,70,70,70	1
2	CS	A	115	1/1	0.95	0.29	55,55,55,55	1
3	PRF	A	117	13/13	0.95	0.27	25,34,43,51	0
2	CS	A	101	1/1	0.95	0.17	87,87,87,87	1
2	CS	A	109	1/1	0.95	0.29	106,106,106,106	1
2	CS	A	112	1/1	0.95	0.17	65,65,65,65	1
4	MG	A	121	1/1	0.95	0.07	63,63,63,63	0
2	CS	A	114	1/1	0.96	0.32	53,53,53,53	1
4	MG	D	109	1/1	0.96	0.07	41,41,41,41	0
2	CS	A	116	1/1	0.96	0.22	53,53,53,53	1
3	PRF	D	106	13/13	0.96	0.28	36,47,59,63	0
2	CS	A	108	1/1	0.97	0.29	77,77,77,77	1
2	CS	B	101	1/1	0.97	0.17	61,61,61,61	0
2	CS	B	102	1/1	0.97	0.29	66,66,66,66	1
3	PRF	C	104	13/13	0.97	0.29	55,64,79,82	0
2	CS	A	102	1/1	0.98	0.18	73,73,73,73	0
2	CS	A	105	1/1	0.98	0.10	83,83,83,83	0
2	CS	B	103	1/1	0.98	0.25	89,89,89,89	1
2	CS	C	101	1/1	0.99	0.26	46,46,46,46	1
2	CS	D	101	1/1	0.99	0.15	64,64,64,64	0
2	CS	A	106	1/1	0.99	0.23	65,65,65,65	1
2	CS	C	102	1/1	0.99	0.21	56,56,56,56	0
2	CS	D	102	1/1	1.00	0.14	66,66,66,66	0

## 6.5 Other polymers

There are no such residues in this entry.