



Full wwPDB X-ray Structure Validation Report ⓘ

May 14, 2020 – 10:14 pm BST

PDB ID : 5D7C
Title : Crystal structure of the ATP binding domain of *S. aureus* GyrB complexed with a ligand
Authors : Zhang, J.; Yang, Q.; Cross, J.B.; Romero, J.A.C.; Ryan, M.D.; Lippa, B.; Dolle, R.E.; Andersen, O.A.; Barker, J.; Cheng, R.K.; Kahmann, J.; Felicetti, B.; Wood, M.; Scheich, C.
Deposited on : 2015-08-13
Resolution : 1.55 Å(reported)

This is a Full wwPDB X-ray Structure Validation Report for a publicly released PDB entry.

We welcome your comments at validation@mail.wwpdb.org

A user guide is available at

<https://www.wwpdb.org/validation/2017/XrayValidationReportHelp>

with specific help available everywhere you see the ⓘ symbol.

The following versions of software and data (see [references ⓘ](#)) were used in the production of this report:

MolProbity	:	4.02b-467
Mogul	:	1.8.5 (274361), CSD as541be (2020)
Xtriage (Phenix)	:	1.13
EDS	:	2.11
buster-report	:	1.1.7 (2018)
Percentile statistics	:	20191225.v01 (using entries in the PDB archive December 25th 2019)
Refmac	:	5.8.0158
CCP4	:	7.0.044 (Gargrove)
Ideal geometry (proteins)	:	Engh & Huber (2001)
Ideal geometry (DNA, RNA)	:	Parkinson et al. (1996)
Validation Pipeline (wwPDB-VP)	:	2.11

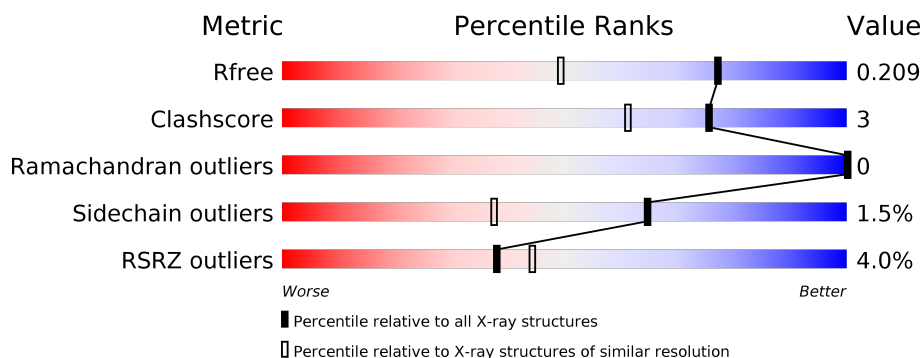
1 Overall quality at a glance

The following experimental techniques were used to determine the structure:

X-RAY DIFFRACTION

The reported resolution of this entry is 1.55 Å.

Percentile scores (ranging between 0-100) for global validation metrics of the entry are shown in the following graphic. The table shows the number of entries on which the scores are based.



Metric	Whole archive (#Entries)	Similar resolution (#Entries, resolution range(Å))
R_{free}	130704	1483 (1.56-1.56)
Clashscore	141614	1529 (1.56-1.56)
Ramachandran outliers	138981	1498 (1.56-1.56)
Sidechain outliers	138945	1495 (1.56-1.56)
RSRZ outliers	127900	1465 (1.56-1.56)

The table below summarises the geometric issues observed across the polymeric chains and their fit to the electron density. The red, orange, yellow and green segments on the lower bar indicate the fraction of residues that contain outliers for ≥ 3 , 2, 1 and 0 types of geometric quality criteria respectively. A grey segment represents the fraction of residues that are not modelled. The numeric value for each fraction is indicated below the corresponding segment, with a dot representing fractions $\leq 5\%$. The upper red bar (where present) indicates the fraction of residues that have poor fit to the electron density. The numeric value is given above the bar.

Mol	Chain	Length	Quality of chain
1	A	212	<div> <div>3%</div> <div> <div></div> <div>73%</div> <div>15%</div> <div>•</div> <div>9%</div> </div> </div>
1	B	212	<div> <div>4%</div> <div> <div></div> <div>76%</div> <div>10%</div> <div>•</div> <div>12%</div> </div> </div>

2 Entry composition

There are 5 unique types of molecules in this entry. The entry contains 3586 atoms, of which 0 are hydrogens and 0 are deuteriums.

In the tables below, the ZeroOcc column contains the number of atoms modelled with zero occupancy, the AltConf column contains the number of residues with at least one atom in alternate conformation and the Trace column contains the number of residues modelled with at most 2 atoms.

- Molecule 1 is a protein called DNA gyrase subunit B.

Mol	Chain	Residues	Atoms					ZeroOcc	AltConf	Trace
1	A	192	Total	C	N	O	S	0	12	0
			1618	1019	284	313	2			
1	B	186	Total	C	N	O	S	0	5	0
			1529	962	265	301	1			

There are 50 discrepancies between the modelled and reference sequences:

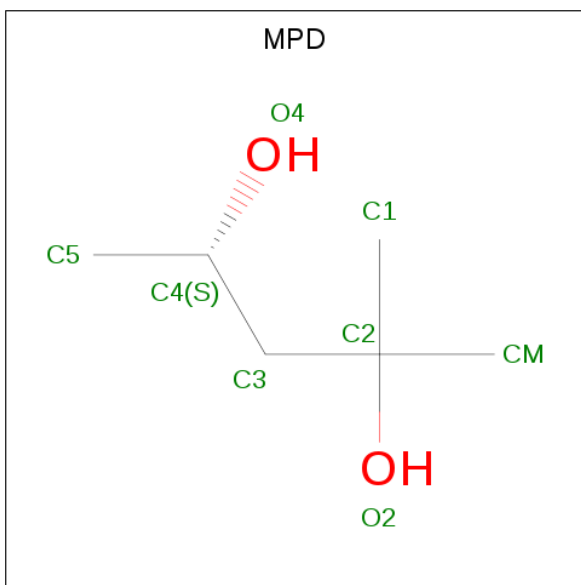
Chain	Residue	Modelled	Actual	Comment	Reference
A	0	GLY	-	expression tag	UNP P0A0K8
A	1	SER	-	expression tag	UNP P0A0K8
A	?	-	VAL	deletion	UNP P0A0K8
A	?	-	LEU	deletion	UNP P0A0K8
A	?	-	HIS	deletion	UNP P0A0K8
A	?	-	ALA	deletion	UNP P0A0K8
A	?	-	GLY	deletion	UNP P0A0K8
A	?	-	GLY	deletion	UNP P0A0K8
A	?	-	LYS	deletion	UNP P0A0K8
A	?	-	PHE	deletion	UNP P0A0K8
A	?	-	GLY	deletion	UNP P0A0K8
A	?	-	GLY	deletion	UNP P0A0K8
A	?	-	GLY	deletion	UNP P0A0K8
A	?	-	GLY	deletion	UNP P0A0K8
A	?	-	GLY	deletion	UNP P0A0K8
A	?	-	TYR	deletion	UNP P0A0K8
A	?	-	LYS	deletion	UNP P0A0K8
A	?	-	VAL	deletion	UNP P0A0K8
A	?	-	SER	deletion	UNP P0A0K8
A	?	-	GLY	deletion	UNP P0A0K8
A	?	-	GLY	deletion	UNP P0A0K8
A	?	-	LEU	deletion	UNP P0A0K8
A	?	-	HIS	deletion	UNP P0A0K8
A	?	-	GLY	deletion	UNP P0A0K8
A	?	-	VAL	deletion	UNP P0A0K8
A	?	-	GLY	deletion	UNP P0A0K8

Continued on next page...

Continued from previous page...

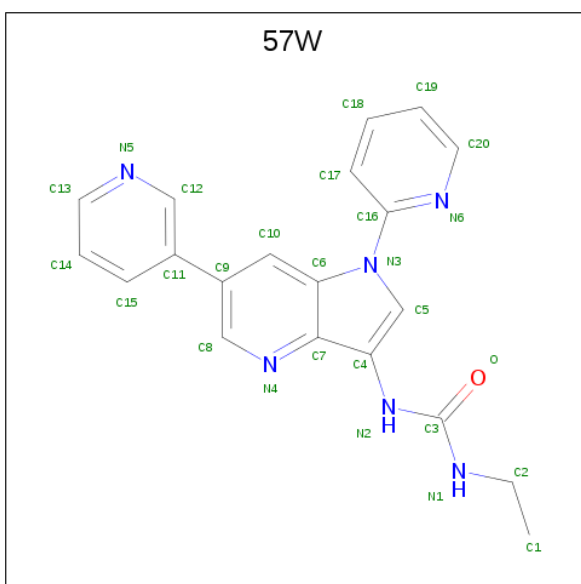
Chain	Residue	Modelled	Actual	Comment	Reference
B	0	GLY	-	expression tag	UNP P0A0K8
B	1	SER	-	expression tag	UNP P0A0K8
B	?	-	VAL	deletion	UNP P0A0K8
B	?	-	LEU	deletion	UNP P0A0K8
B	?	-	HIS	deletion	UNP P0A0K8
B	?	-	ALA	deletion	UNP P0A0K8
B	?	-	GLY	deletion	UNP P0A0K8
B	?	-	GLY	deletion	UNP P0A0K8
B	?	-	LYS	deletion	UNP P0A0K8
B	?	-	PHE	deletion	UNP P0A0K8
B	?	-	GLY	deletion	UNP P0A0K8
B	?	-	GLY	deletion	UNP P0A0K8
B	?	-	GLY	deletion	UNP P0A0K8
B	?	-	GLY	deletion	UNP P0A0K8
B	?	-	TYR	deletion	UNP P0A0K8
B	?	-	LYS	deletion	UNP P0A0K8
B	?	-	VAL	deletion	UNP P0A0K8
B	?	-	SER	deletion	UNP P0A0K8
B	?	-	GLY	deletion	UNP P0A0K8
B	?	-	GLY	deletion	UNP P0A0K8
B	?	-	LEU	deletion	UNP P0A0K8
B	?	-	HIS	deletion	UNP P0A0K8
B	?	-	GLY	deletion	UNP P0A0K8
B	?	-	VAL	deletion	UNP P0A0K8
B	?	-	GLY	deletion	UNP P0A0K8

- Molecule 2 is (4S)-2-METHYL-2,4-PENTANEDIOL (three-letter code: MPD) (formula: C₆H₁₄O₂).



Mol	Chain	Residues	Atoms			ZeroOcc	AltConf
2	A	1	Total	C	O	0	0
			8	6	2		
2	A	1	Total	C	O	0	0
			8	6	2		
2	B	1	Total	C	O	0	0
			8	6	2		
2	B	1	Total	C	O	0	0
			8	6	2		

- Molecule 3 is 1-ethyl-3-[1-(pyridin-2-yl)-6-(pyridin-3-yl)-1H-pyrrolo[3,2-b]pyridin-3-yl]urea (three-letter code: 57W) (formula: C₂₀H₁₈N₆O).



Mol	Chain	Residues	Atoms				ZeroOcc	AltConf
3	A	1	Total	C	N	O	0	0
			27	20	6	1		
3	B	1	Total	C	N	O	0	0
			27	20	6	1		

- Molecule 4 is MAGNESIUM ION (three-letter code: MG) (formula: Mg).

Mol	Chain	Residues	Atoms		ZeroOcc	AltConf
4	B	7	Total	Mg	0	0
			7	7		
4	A	1	Total	Mg	0	0
			1	1		

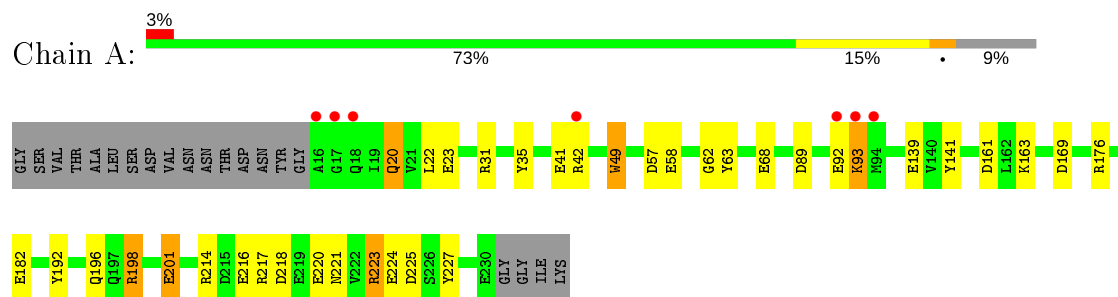
- Molecule 5 is water.

Mol	Chain	Residues	Atoms		ZeroOcc	AltConf
5	A	168	Total	O	0	1
			169	169		
5	B	174	Total	O	0	2
			176	176		

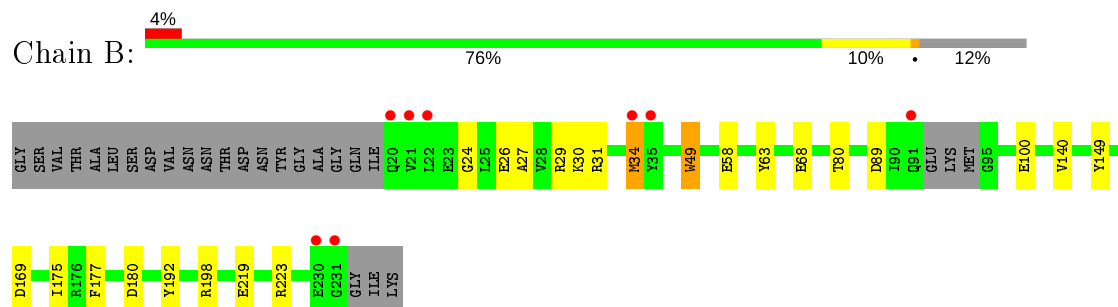
3 Residue-property plots [i](#)

These plots are drawn for all protein, RNA and DNA chains in the entry. The first graphic for a chain summarises the proportions of the various outlier classes displayed in the second graphic. The second graphic shows the sequence view annotated by issues in geometry and electron density. Residues are color-coded according to the number of geometric quality criteria for which they contain at least one outlier: green = 0, yellow = 1, orange = 2 and red = 3 or more. A red dot above a residue indicates a poor fit to the electron density ($RSRZ > 2$). Stretches of 2 or more consecutive residues without any outlier are shown as a green connector. Residues present in the sample, but not in the model, are shown in grey.

• Molecule 1: DNA gyrase subunit B



• Molecule 1: DNA gyrase subunit B



4 Data and refinement statistics

Property	Value	Source
Space group	C 1 2 1	Depositor
Cell constants a, b, c, α , β , γ	142.80Å 55.48Å 51.42Å 90.00° 100.77° 90.00°	Depositor
Resolution (Å)	37.78 – 1.55 37.78 – 1.55	Depositor EDS
% Data completeness (in resolution range)	96.8 (37.78-1.55) 96.8 (37.78-1.55)	Depositor EDS
R_{merge}	0.04	Depositor
R_{sym}	(Not available)	Depositor
$\langle I/\sigma(I) \rangle$ ¹	2.68 (at 1.55Å)	Xtriage
Refinement program	REFMAC 5.8.0103	Depositor
R, R_{free}	0.171 , 0.199 0.185 , 0.209	Depositor DCC
R_{free} test set	2846 reflections (5.11%)	wwPDB-VP
Wilson B-factor (Å ²)	21.6	Xtriage
Anisotropy	0.006	Xtriage
Bulk solvent k_{sol} (e/Å ³), B_{sol} (Å ²)	0.36 , 44.6	EDS
L-test for twinning ²	$\langle L \rangle = 0.51$, $\langle L^2 \rangle = 0.34$	Xtriage
Estimated twinning fraction	No twinning to report.	Xtriage
F_o, F_c correlation	0.97	EDS
Total number of atoms	3586	wwPDB-VP
Average B, all atoms (Å ²)	24.0	wwPDB-VP

Xtriage's analysis on translational NCS is as follows: *The largest off-origin peak in the Patterson function is 6.22% of the height of the origin peak. No significant pseudotranslation is detected.*

¹Intensities estimated from amplitudes.

²Theoretical values of $\langle |L| \rangle$, $\langle L^2 \rangle$ for acentric reflections are 0.5, 0.333 respectively for untwinned datasets, and 0.375, 0.2 for perfectly twinned datasets.

5 Model quality [i](#)

5.1 Standard geometry [i](#)

Bond lengths and bond angles in the following residue types are not validated in this section: MG, 57W, MPD

The Z score for a bond length (or angle) is the number of standard deviations the observed value is removed from the expected value. A bond length (or angle) with $|Z| > 5$ is considered an outlier worth inspection. RMSZ is the root-mean-square of all Z scores of the bond lengths (or angles).

Mol	Chain	Bond lengths		Bond angles	
		RMSZ	# Z >5	RMSZ	# Z >5
1	A	1.62	24/1679 (1.4%)	1.55	26/2269 (1.1%)
1	B	1.55	9/1568 (0.6%)	1.42	11/2121 (0.5%)
All	All	1.58	33/3247 (1.0%)	1.49	37/4390 (0.8%)

All (33) bond length outliers are listed below:

Mol	Chain	Res	Type	Atoms	Z	Observed(Å)	Ideal(Å)
1	A	63	TYR	CG-CD1	-10.55	1.25	1.39
1	A	227	TYR	CE1-CZ	-9.89	1.25	1.38
1	A	49	TRP	CG-CD1	-9.18	1.24	1.36
1	B	58	GLU	CB-CG	-7.14	1.38	1.52
1	A	214	ARG	CD-NE	-7.12	1.34	1.46
1	A	216	GLU	CD-OE2	-7.10	1.17	1.25
1	B	49	TRP	CG-CD1	-6.99	1.26	1.36
1	A	227	TYR	CG-CD2	-6.78	1.30	1.39
1	A	201	GLU	CD-OE2	6.57	1.32	1.25
1	B	100	GLU	CD-OE2	-6.55	1.18	1.25
1	A	223[A]	ARG	CZ-NH1	6.32	1.41	1.33
1	A	223[B]	ARG	CZ-NH1	6.32	1.41	1.33
1	A	224	GLU	CD-OE2	-6.06	1.19	1.25
1	A	192	TYR	CG-CD2	-6.02	1.31	1.39
1	A	49	TRP	CD2-CE2	-6.01	1.34	1.41
1	A	35	TYR	CD2-CE2	-5.86	1.30	1.39
1	B	68	GLU	CD-OE2	5.86	1.32	1.25
1	A	220	GLU	CD-OE1	5.75	1.31	1.25
1	A	201	GLU	CG-CD	5.71	1.60	1.51
1	A	139	GLU	CD-OE2	5.52	1.31	1.25
1	B	219	GLU	CD-OE2	5.51	1.31	1.25
1	A	220	GLU	CD-OE2	5.48	1.31	1.25
1	A	163	LYS	CA-CB	-5.47	1.42	1.53
1	B	63	TYR	CG-CD1	-5.42	1.32	1.39

Continued on next page...

Continued from previous page...

Mol	Chain	Res	Type	Atoms	Z	Observed(Å)	Ideal(Å)
1	B	26	GLU	CD-OE2	5.27	1.31	1.25
1	B	223	ARG	CZ-NH1	5.22	1.39	1.33
1	A	163	LYS	CB-CG	-5.21	1.38	1.52
1	A	68	GLU	CD-OE1	5.19	1.31	1.25
1	A	227	TYR	CE2-CZ	-5.16	1.31	1.38
1	A	218	ASP	CB-CG	5.16	1.62	1.51
1	B	192	TYR	CE1-CZ	-5.12	1.31	1.38
1	A	62	GLY	N-CA	-5.08	1.38	1.46
1	A	182	GLU	CG-CD	5.07	1.59	1.51

All (37) bond angle outliers are listed below:

Mol	Chain	Res	Type	Atoms	Z	Observed(°)	Ideal(°)
1	B	169	ASP	CB-CG-OD1	14.48	131.33	118.30
1	A	223[A]	ARG	NE-CZ-NH1	14.34	127.47	120.30
1	A	223[B]	ARG	NE-CZ-NH1	14.34	127.47	120.30
1	A	223[A]	ARG	NE-CZ-NH2	-12.38	114.11	120.30
1	A	223[B]	ARG	NE-CZ-NH2	-12.38	114.11	120.30
1	B	63	TYR	CB-CG-CD2	-9.77	115.14	121.00
1	A	63	TYR	CB-CG-CD1	-9.02	115.59	121.00
1	A	218	ASP	CB-CG-OD1	-8.90	110.29	118.30
1	B	177	PHE	CB-CG-CD2	8.19	126.53	120.80
1	A	58	GLU	OE1-CD-OE2	7.50	132.30	123.30
1	A	141	TYR	CB-CG-CD2	-7.45	116.53	121.00
1	A	217	ARG	NE-CZ-NH1	7.38	123.99	120.30
1	A	31	ARG	NE-CZ-NH1	-7.32	116.64	120.30
1	A	35	TYR	CD1-CE1-CZ	-7.29	113.24	119.80
1	B	29	ARG	NE-CZ-NH2	7.15	123.88	120.30
1	A	161	ASP	CB-CG-OD2	-6.93	112.06	118.30
1	B	223	ARG	NE-CZ-NH1	6.72	123.66	120.30
1	A	176	ARG	NE-CZ-NH1	-6.68	116.96	120.30
1	A	198[A]	ARG	NE-CZ-NH2	-6.42	117.09	120.30
1	A	198[B]	ARG	NE-CZ-NH2	-6.42	117.09	120.30
1	B	180	ASP	CB-CG-OD2	-6.42	112.52	118.30
1	A	218	ASP	OD1-CG-OD2	6.40	135.45	123.30
1	A	169	ASP	CB-CG-OD1	6.29	123.97	118.30
1	B	149	TYR	CZ-CE2-CD2	6.28	125.45	119.80
1	A	89	ASP	CB-CG-OD2	6.22	123.90	118.30
1	A	42[A]	ARG	NE-CZ-NH2	6.20	123.40	120.30
1	A	42[B]	ARG	NE-CZ-NH2	6.20	123.40	120.30
1	A	41	GLU	OE1-CD-OE2	-6.13	115.94	123.30
1	B	89	ASP	CB-CG-OD2	6.02	123.72	118.30

Continued on next page...

Continued from previous page...

Mol	Chain	Res	Type	Atoms	Z	Observed(°)	Ideal(°)
1	B	149	TYR	CG-CD1-CE1	5.96	126.06	121.30
1	B	169	ASP	OD1-CG-OD2	-5.79	112.30	123.30
1	B	68	GLU	OE1-CD-OE2	-5.78	116.37	123.30
1	A	163	LYS	CA-CB-CG	5.56	125.64	113.40
1	A	176	ARG	NE-CZ-NH2	5.22	122.91	120.30
1	A	57	ASP	CB-CG-OD1	-5.18	113.63	118.30
1	A	221	ASN	N-CA-CB	5.13	119.83	110.60
1	A	214	ARG	NE-CZ-NH2	-5.02	117.79	120.30

There are no chirality outliers.

There are no planarity outliers.

5.2 Too-close contacts

In the following table, the Non-H and H(model) columns list the number of non-hydrogen atoms and hydrogen atoms in the chain respectively. The H(added) column lists the number of hydrogen atoms added and optimized by MolProbity. The Clashes column lists the number of clashes within the asymmetric unit, whereas Symm-Clashes lists symmetry related clashes.

Mol	Chain	Non-H	H(model)	H(added)	Clashes	Symm-Clashes
1	A	1618	0	1631	9	0
1	B	1529	0	1512	8	0
2	A	16	0	28	1	0
2	B	16	0	28	1	0
3	A	27	0	18	2	0
3	B	27	0	18	2	0
4	A	1	0	0	0	0
4	B	7	0	0	0	0
5	A	169	0	0	4	0
5	B	176	0	0	0	0
All	All	3586	0	3235	20	0

The all-atom clashscore is defined as the number of clashes found per 1000 atoms (including hydrogen atoms). The all-atom clashscore for this structure is 3.

All (20) close contacts within the same asymmetric unit are listed below, sorted by their clash magnitude.

Atom-1	Atom-2	Interatomic distance (Å)	Clash overlap (Å)
1:A:223[B]:ARG:NH1	5:A:402:HOH:O	1.64	0.92
1:A:223[B]:ARG:HD2	5:A:401:HOH:O	1.69	0.91

Continued on next page...

Continued from previous page...

Atom-1	Atom-2	Interatomic distance (Å)	Clash overlap (Å)
3:B:303:57W:H9	3:B:303:57W:H18	1.63	0.80
3:A:303:57W:H18	3:A:303:57W:H9	1.82	0.60
1:A:223[A]:ARG:HD3	5:A:445:HOH:O	2.03	0.59
1:A:93:LYS:HD3	1:B:27:ALA:HB1	1.87	0.56
1:A:196[A]:GLN:NE2	1:A:225:ASP:OD2	2.43	0.52
1:A:20[A]:GLN:NE2	1:A:23:GLU:OE1	2.47	0.48
1:B:31:ARG:HG2	1:B:34:MET:HB2	1.95	0.48
3:A:303:57W:H18	3:A:303:57W:C10	2.44	0.47
1:A:198[A]:ARG:HH11	1:A:201:GLU:CD	2.17	0.47
2:A:301:MPD:H52	5:A:483:HOH:O	2.14	0.46
1:B:140:VAL:HG23	1:B:175[A]:ILE:CD1	2.46	0.46
1:B:80:THR:HG21	2:B:301:MPD:H32	1.99	0.45
1:B:31:ARG:CG	1:B:34:MET:HB2	2.49	0.42
1:B:140:VAL:HG23	1:B:175[A]:ILE:HD11	2.03	0.41
1:A:49:TRP:CH2	1:A:198[B]:ARG:HB3	2.55	0.41
1:B:49:TRP:CH2	1:B:198[A]:ARG:HB3	2.56	0.41
3:B:303:57W:C10	3:B:303:57W:H18	2.35	0.41
1:A:92:GLU:CG	1:B:24:GLY:HA2	2.51	0.41

There are no symmetry-related clashes.

5.3 Torsion angles [i](#)

5.3.1 Protein backbone [i](#)

In the following table, the Percentiles column shows the percent Ramachandran outliers of the chain as a percentile score with respect to all X-ray entries followed by that with respect to entries of similar resolution.

The Analysed column shows the number of residues for which the backbone conformation was analysed, and the total number of residues.

Mol	Chain	Analysed	Favoured	Allowed	Outliers	Percentiles	
1	A	202/212 (95%)	199 (98%)	3 (2%)	0	100	100
1	B	187/212 (88%)	184 (98%)	3 (2%)	0	100	100
All	All	389/424 (92%)	383 (98%)	6 (2%)	0	100	100

There are no Ramachandran outliers to report.

5.3.2 Protein sidechains [i](#)

In the following table, the Percentiles column shows the percent sidechain outliers of the chain as a percentile score with respect to all X-ray entries followed by that with respect to entries of similar resolution.

The Analysed column shows the number of residues for which the sidechain conformation was analysed, and the total number of residues.

Mol	Chain	Analysed	Rotameric	Outliers	Percentiles	
1	A	180/183 (98%)	176 (98%)	4 (2%)	52	23
1	B	168/183 (92%)	166 (99%)	2 (1%)	71	49
All	All	348/366 (95%)	342 (98%)	6 (2%)	65	32

All (6) residues with a non-rotameric sidechain are listed below:

Mol	Chain	Res	Type
1	A	20[A]	GLN
1	A	20[B]	GLN
1	A	22	LEU
1	A	93	LYS
1	B	30	LYS
1	B	34	MET

Some sidechains can be flipped to improve hydrogen bonding and reduce clashes. There are no such sidechains identified.

5.3.3 RNA [i](#)

There are no RNA molecules in this entry.

5.4 Non-standard residues in protein, DNA, RNA chains [i](#)

There are no non-standard protein/DNA/RNA residues in this entry.

5.5 Carbohydrates [i](#)

There are no carbohydrates in this entry.

5.6 Ligand geometry [i](#)

Of 14 ligands modelled in this entry, 8 are monoatomic - leaving 6 for Mogul analysis.

In the following table, the Counts columns list the number of bonds (or angles) for which Mogul statistics could be retrieved, the number of bonds (or angles) that are observed in the model and the number of bonds (or angles) that are defined in the Chemical Component Dictionary. The Link column lists molecule types, if any, to which the group is linked. The Z score for a bond length (or angle) is the number of standard deviations the observed value is removed from the expected value. A bond length (or angle) with $|Z| > 2$ is considered an outlier worth inspection. RMSZ is the root-mean-square of all Z scores of the bond lengths (or angles).

Mol	Type	Chain	Res	Link	Bond lengths			Bond angles		
					Counts	RMSZ	# $ Z > 2$	Counts	RMSZ	# $ Z > 2$
3	57W	A	303	-	30,30,30	1.78	9 (30%)	31,41,41	3.48	9 (29%)
3	57W	B	303	-	30,30,30	1.63	5 (16%)	31,41,41	3.02	10 (32%)
2	MPD	B	301	-	7,7,7	0.89	0	9,10,10	1.22	0
2	MPD	B	302	-	7,7,7	0.89	0	9,10,10	1.74	2 (22%)
2	MPD	A	302	-	7,7,7	0.88	0	9,10,10	1.03	0
2	MPD	A	301	-	7,7,7	0.98	0	9,10,10	1.27	2 (22%)

In the following table, the Chirals column lists the number of chiral outliers, the number of chiral centers analysed, the number of these observed in the model and the number defined in the Chemical Component Dictionary. Similar counts are reported in the Torsion and Rings columns. '-' means no outliers of that kind were identified.

Mol	Type	Chain	Res	Link	Chirals	Torsions	Rings
3	57W	A	303	-	-	0/11/15/15	0/4/4/4
3	57W	B	303	-	-	0/11/15/15	0/4/4/4
2	MPD	B	301	-	-	3/5/5/5	-
2	MPD	B	302	-	-	1/5/5/5	-
2	MPD	A	302	-	-	3/5/5/5	-
2	MPD	A	301	-	-	0/5/5/5	-

All (14) bond length outliers are listed below:

Mol	Chain	Res	Type	Atoms	Z	Observed(Å)	Ideal(Å)
3	B	303	57W	C20-N6	4.49	1.44	1.34
3	A	303	57W	C4-C7	3.92	1.50	1.43
3	B	303	57W	C5-N3	-3.65	1.35	1.39
3	A	303	57W	C6-C7	3.46	1.47	1.40
3	A	303	57W	C12-N5	3.05	1.40	1.34
3	A	303	57W	C6-N3	-2.79	1.35	1.39
3	A	303	57W	C16-N6	2.76	1.38	1.32
3	A	303	57W	C7-N4	-2.75	1.33	1.37
3	B	303	57W	C4-C7	2.67	1.47	1.43
3	B	303	57W	C12-C11	-2.52	1.34	1.39

Continued on next page...

Continued from previous page...

Mol	Chain	Res	Type	Atoms	Z	Observed(Å)	Ideal(Å)
3	A	303	57W	C16-N3	-2.50	1.36	1.44
3	A	303	57W	C5-C4	-2.42	1.35	1.38
3	A	303	57W	C10-C9	-2.10	1.33	1.38
3	B	303	57W	C6-C7	2.07	1.44	1.40

All (23) bond angle outliers are listed below:

Mol	Chain	Res	Type	Atoms	Z	Observed(°)	Ideal(°)
3	A	303	57W	C20-N6-C16	13.21	127.09	115.56
3	B	303	57W	C18-C17-C16	7.99	122.08	117.09
3	B	303	57W	C20-N6-C16	7.78	122.36	115.56
3	A	303	57W	C10-C6-C7	-6.94	113.98	120.55
3	B	303	57W	C14-C15-C11	-6.42	112.49	120.56
3	A	303	57W	C17-C16-N6	-6.12	117.59	125.48
3	B	303	57W	C17-C16-N6	-6.03	117.70	125.48
3	A	303	57W	C19-C20-N6	-5.70	114.11	123.43
3	A	303	57W	C8-N4-C7	-4.46	112.33	116.78
2	B	302	MPD	O4-C4-C3	4.09	127.87	111.36
3	B	303	57W	C9-C10-C6	-3.97	117.62	121.87
3	B	303	57W	C6-C7-N4	-3.74	120.56	125.00
3	B	303	57W	C19-C20-N6	-3.47	117.76	123.43
3	A	303	57W	N6-C16-N3	3.37	120.09	114.33
3	B	303	57W	C17-C16-N3	3.19	127.83	120.71
3	A	303	57W	C14-C15-C11	-3.19	116.56	120.56
3	A	303	57W	C12-C11-C9	-2.90	116.63	121.69
2	B	302	MPD	O4-C4-C5	-2.48	98.65	109.38
3	A	303	57W	C10-C9-C8	2.26	119.41	116.24
3	B	303	57W	C15-C14-C13	2.23	122.21	118.91
2	A	301	MPD	CM-C2-C3	2.19	120.17	109.96
2	A	301	MPD	O2-C2-CM	-2.14	101.20	108.08
3	B	303	57W	C4-N2-C3	-2.03	120.32	125.61

There are no chirality outliers.

All (7) torsion outliers are listed below:

Mol	Chain	Res	Type	Atoms
2	B	301	MPD	C1-C2-C3-C4
2	B	301	MPD	O2-C2-C3-C4
2	A	302	MPD	C1-C2-C3-C4
2	A	302	MPD	O2-C2-C3-C4
2	B	302	MPD	O2-C2-C3-C4
2	B	301	MPD	CM-C2-C3-C4

Continued on next page...

Continued from previous page...

Mol	Chain	Res	Type	Atoms
2	A	302	MPD	CM-C2-C3-C4

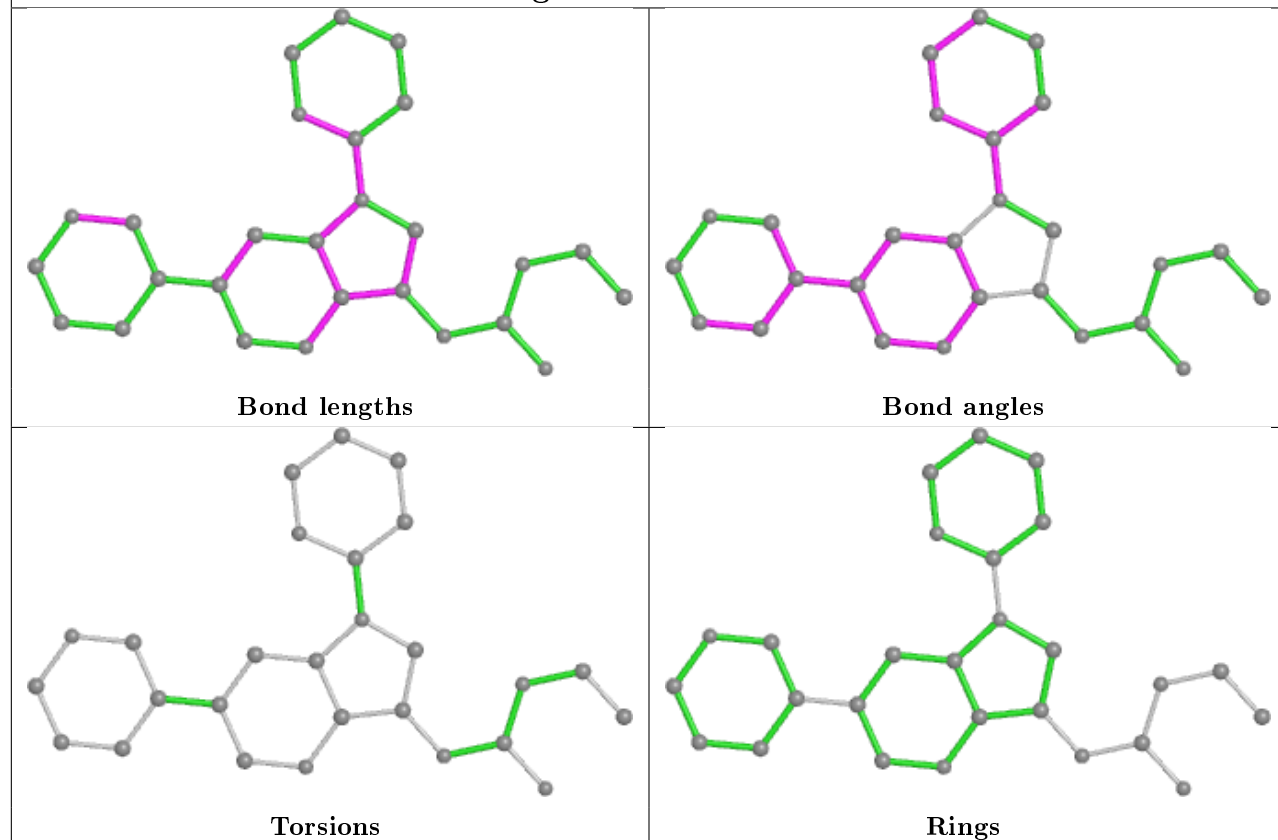
There are no ring outliers.

4 monomers are involved in 6 short contacts:

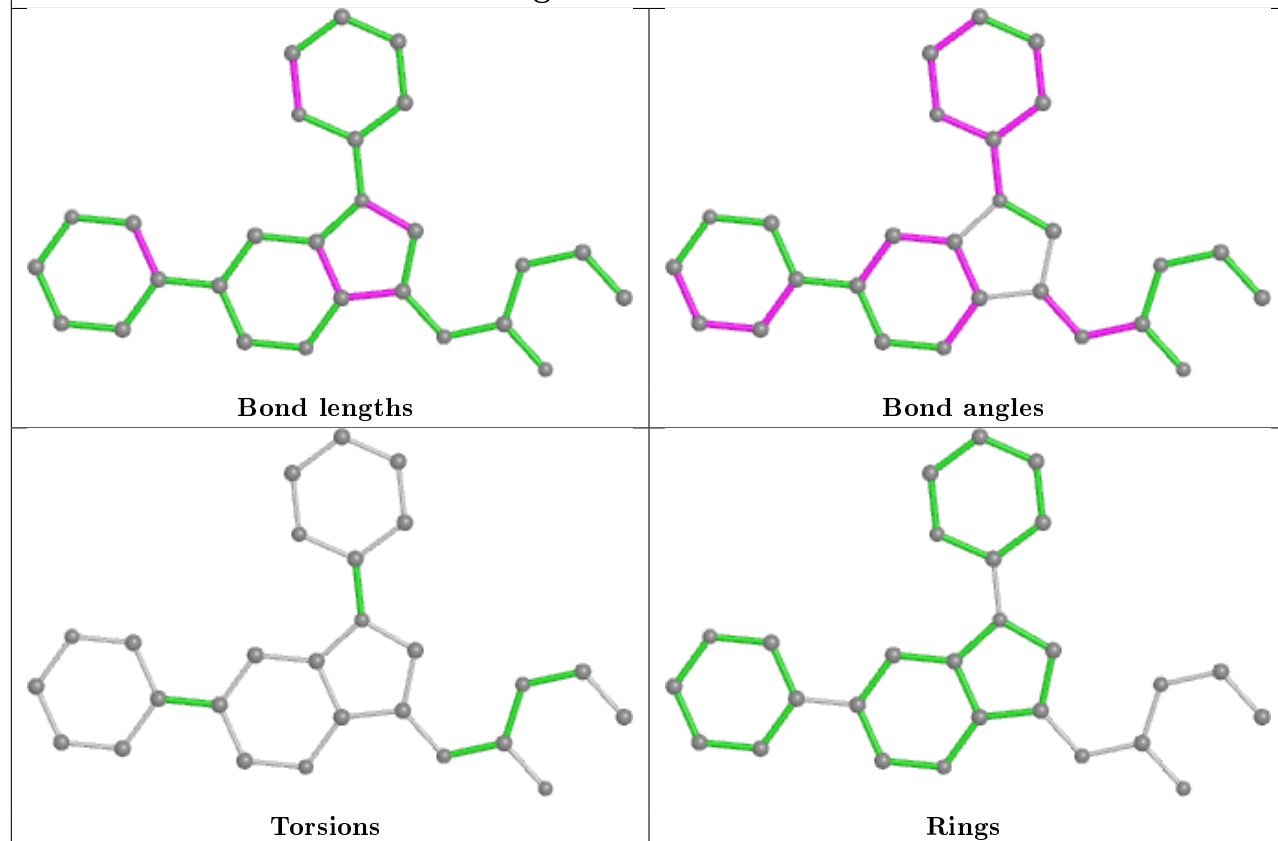
Mol	Chain	Res	Type	Clashes	Symm-Clashes
3	A	303	57W	2	0
3	B	303	57W	2	0
2	B	301	MPD	1	0
2	A	301	MPD	1	0

The following is a two-dimensional graphical depiction of Mogul quality analysis of bond lengths, bond angles, torsion angles, and ring geometry for all instances of the Ligand of Interest. In addition, ligands with molecular weight > 250 and outliers as shown on the validation Tables will also be included. For torsion angles, if less than 5% of the Mogul distribution of torsion angles is within 10 degrees of the torsion angle in question, then that torsion angle is considered an outlier. Any bond that is central to one or more torsion angles identified as an outlier by Mogul will be highlighted in the graph. For rings, the root-mean-square deviation (RMSD) between the ring in question and similar rings identified by Mogul is calculated over all ring torsion angles. If the average RMSD is greater than 60 degrees and the minimal RMSD between the ring in question and any Mogul-identified rings is also greater than 60 degrees, then that ring is considered an outlier. The outliers are highlighted in purple. The color gray indicates Mogul did not find sufficient equivalents in the CSD to analyse the geometry.

Ligand 57W A 303



Ligand 57W B 303



5.7 Other polymers

There are no such residues in this entry.

5.8 Polymer linkage issues

There are no chain breaks in this entry.

6 Fit of model and data [i](#)

6.1 Protein, DNA and RNA chains [i](#)

In the following table, the column labelled ‘#RSRZ> 2’ contains the number (and percentage) of RSRZ outliers, followed by percent RSRZ outliers for the chain as percentile scores relative to all X-ray entries and entries of similar resolution. The OWAB column contains the minimum, median, 95th percentile and maximum values of the occupancy-weighted average B-factor per residue. The column labelled ‘Q< 0.9’ lists the number of (and percentage) of residues with an average occupancy less than 0.9.

Mol	Chain	Analysed	<RSRZ>	#RSRZ>2			OWAB(Å ²)	Q<0.9
1	A	192/212 (90%)	0.18	7 (3%)	42	50	14, 20, 35, 73	0
1	B	186/212 (87%)	0.17	8 (4%)	35	40	13, 20, 42, 61	0
All	All	378/424 (89%)	0.17	15 (3%)	38	44	13, 20, 39, 73	0

All (15) RSRZ outliers are listed below:

Mol	Chain	Res	Type	RSRZ
1	B	21	VAL	6.5
1	B	22	LEU	6.0
1	A	16	ALA	5.0
1	A	92	GLU	4.4
1	B	35	TYR	4.2
1	A	94	MET	4.1
1	B	231	GLY	4.0
1	A	93	LYS	3.2
1	B	230	GLU	3.2
1	A	17	GLY	2.6
1	B	91	GLN	2.4
1	B	34	MET	2.3
1	A	18	GLN	2.2
1	B	20	GLN	2.1
1	A	42[A]	ARG	2.0

6.2 Non-standard residues in protein, DNA, RNA chains [i](#)

There are no non-standard protein/DNA/RNA residues in this entry.

6.3 Carbohydrates [i](#)

There are no carbohydrates in this entry.

6.4 Ligands ⓘ

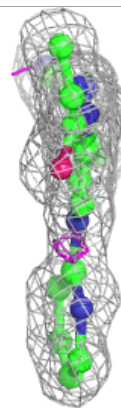
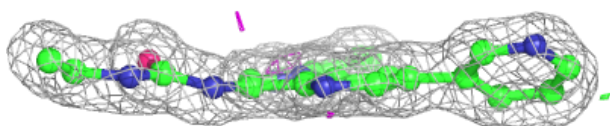
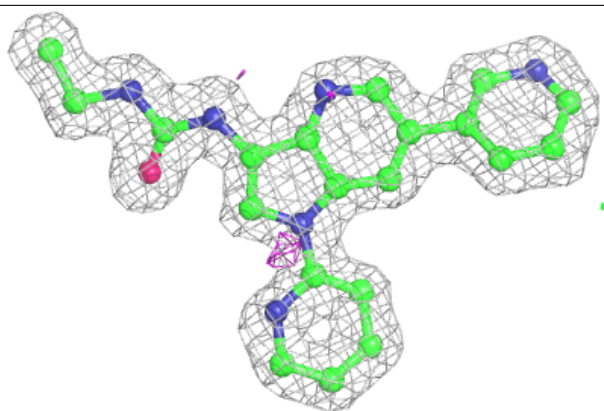
In the following table, the Atoms column lists the number of modelled atoms in the group and the number defined in the chemical component dictionary. The B-factors column lists the minimum, median, 95th percentile and maximum values of B factors of atoms in the group. The column labelled 'Q< 0.9' lists the number of atoms with occupancy less than 0.9.

Mol	Type	Chain	Res	Atoms	RSCC	RSR	B-factors(Å ²)	Q<0.9
2	MPD	B	301	8/8	0.77	0.16	35,43,48,51	0
2	MPD	A	301	8/8	0.80	0.15	41,46,51,53	0
2	MPD	A	302	8/8	0.82	0.18	30,40,51,60	0
4	MG	B	304	1/1	0.83	0.24	41,41,41,41	0
2	MPD	B	302	8/8	0.85	0.15	26,34,36,39	0
4	MG	A	304	1/1	0.88	0.12	31,31,31,31	0
4	MG	B	310	1/1	0.88	0.36	40,40,40,40	0
4	MG	B	307	1/1	0.90	0.28	41,41,41,41	0
3	57W	A	303	27/27	0.91	0.09	19,21,30,32	0
3	57W	B	303	27/27	0.93	0.09	14,17,23,27	0
4	MG	B	306	1/1	0.97	0.24	27,27,27,27	0
4	MG	B	309	1/1	0.97	0.16	35,35,35,35	0
4	MG	B	305	1/1	0.98	0.07	28,28,28,28	0
4	MG	B	308	1/1	0.99	0.27	28,28,28,28	0

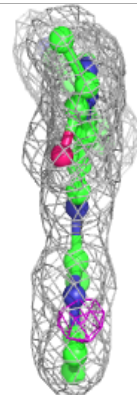
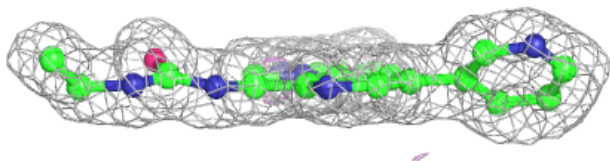
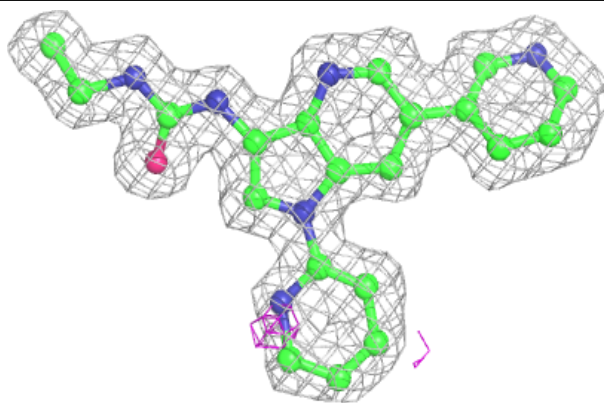
The following is a graphical depiction of the model fit to experimental electron density of all instances of the Ligand of Interest. In addition, ligands with molecular weight > 250 and outliers as shown on the geometry validation Tables will also be included. Each fit is shown from different orientation to approximate a three-dimensional view.

Electron density around 57W A 303:

$2mF_o-DF_c$ (at 0.7 rmsd) in gray
 mF_o-DF_c (at 3 rmsd) in purple (negative)
and green (positive)

**Electron density around 57W B 303:**

$2mF_o-DF_c$ (at 0.7 rmsd) in gray
 mF_o-DF_c (at 3 rmsd) in purple (negative)
and green (positive)



6.5 Other polymers

There are no such residues in this entry.