



Full wwPDB X-ray Structure Validation Report ⓘ

May 15, 2020 – 11:59 pm BST

PDB ID : 5D7P
Title : Crystal structure of human Sirt2 in complex with ADPR and EX-243
Authors : Rumpf, T.; Gerhardt, S.; Einsle, O.; Jung, M.
Deposited on : 2015-08-14
Resolution : 1.76 Å(reported)

This is a Full wwPDB X-ray Structure Validation Report for a publicly released PDB entry.

We welcome your comments at validation@mail.wwpdb.org

A user guide is available at

<https://www.wwpdb.org/validation/2017/XrayValidationReportHelp>

with specific help available everywhere you see the ⓘ symbol.

The following versions of software and data (see [references ⓘ](#)) were used in the production of this report:

MolProbity : 4.02b-467
Mogul : 1.8.5 (274361), CSD as541be (2020)
Xtriage (Phenix) : 1.13
EDS : 2.11
buster-report : 1.1.7 (2018)
Percentile statistics : 20191225.v01 (using entries in the PDB archive December 25th 2019)
Refmac : 5.8.0158
CCP4 : 7.0.044 (Gargrove)
Ideal geometry (proteins) : Engh & Huber (2001)
Ideal geometry (DNA, RNA) : Parkinson et al. (1996)
Validation Pipeline (wwPDB-VP) : 2.11

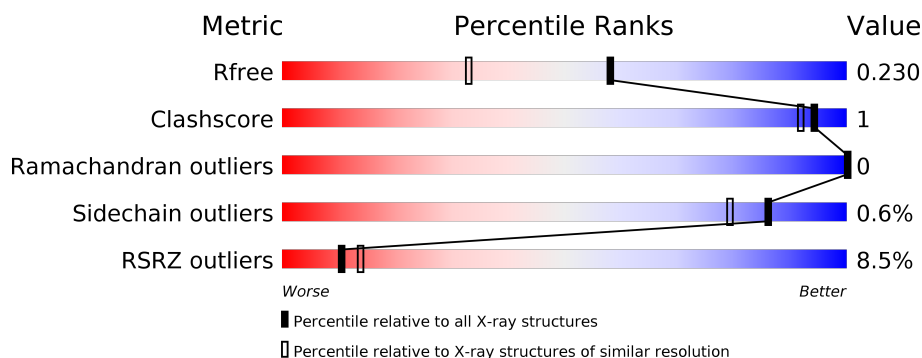
1 Overall quality at a glance

The following experimental techniques were used to determine the structure:

X-RAY DIFFRACTION

The reported resolution of this entry is 1.76 Å.

Percentile scores (ranging between 0-100) for global validation metrics of the entry are shown in the following graphic. The table shows the number of entries on which the scores are based.



Metric	Whole archive (#Entries)	Similar resolution (#Entries, resolution range(Å))
R_{free}	130704	2340 (1.76-1.76)
Clashscore	141614	2466 (1.76-1.76)
Ramachandran outliers	138981	2437 (1.76-1.76)
Sidechain outliers	138945	2437 (1.76-1.76)
RSRZ outliers	127900	2298 (1.76-1.76)

The table below summarises the geometric issues observed across the polymeric chains and their fit to the electron density. The red, orange, yellow and green segments on the lower bar indicate the fraction of residues that contain outliers for ≥ 3 , 2, 1 and 0 types of geometric quality criteria respectively. A grey segment represents the fraction of residues that are not modelled. The numeric value for each fraction is indicated below the corresponding segment, with a dot representing fractions $\leq 5\%$. The upper red bar (where present) indicates the fraction of residues that have poor fit to the electron density. The numeric value is given above the bar.

Mol	Chain	Length	Quality of chain
1	A	304	<div> <div>9%</div> <div>95%</div> <div>• •</div> </div>
1	B	304	<div> <div>8%</div> <div>96%</div> <div>• •</div> </div>

2 Entry composition [i](#)

There are 6 unique types of molecules in this entry. The entry contains 5222 atoms, of which 0 are hydrogens and 0 are deuteriums.

In the tables below, the ZeroOcc column contains the number of atoms modelled with zero occupancy, the AltConf column contains the number of residues with at least one atom in alternate conformation and the Trace column contains the number of residues modelled with at most 2 atoms.

- Molecule 1 is a protein called NAD-dependent protein deacetylase sirtuin-2.

Mol	Chain	Residues	Atoms					ZeroOcc	AltConf	Trace
1	A	302	Total	C	N	O	S	0	1	0
			2406	1544	399	442	21			
1	B	299	Total	C	N	O	S	0	1	0
			2378	1528	393	438	19			

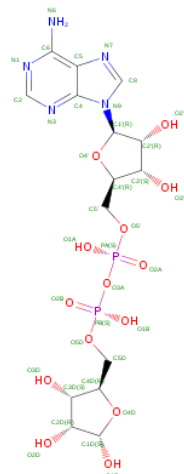
There are 6 discrepancies between the modelled and reference sequences:

Chain	Residue	Modelled	Actual	Comment	Reference
A	53	GLY	-	expression tag	UNP Q8IXJ6
A	54	HIS	-	expression tag	UNP Q8IXJ6
A	55	MET	-	expression tag	UNP Q8IXJ6
B	53	GLY	-	expression tag	UNP Q8IXJ6
B	54	HIS	-	expression tag	UNP Q8IXJ6
B	55	MET	-	expression tag	UNP Q8IXJ6

- Molecule 2 is ZINC ION (three-letter code: ZN) (formula: Zn).

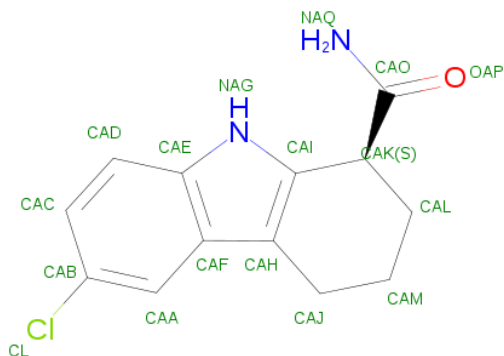
Mol	Chain	Residues	Atoms		ZeroOcc	AltConf
2	B	1	Total	Zn	0	0
			1	1		
2	A	1	Total	Zn	0	0
			1	1		

- Molecule 3 is [(2R,3S,4R,5R)-5-(6-AMINOPURIN-9-YL)-3,4-DIHYDROXY-OXOLAN-2-YL]METHYL [HYDROXY-[(2R,3S,4R,5S)-3,4,5-TRIHYDROXYOXOLAN-2-YL]METHOXY]PHOSPHORYL] HYDROGEN PHOSPHATE (three-letter code: AR6) (formula: C₁₅H₂₃N₅O₁₄P₂).



Mol	Chain	Residues	Atoms					ZeroOcc	AltConf
3	A	1	Total 36	C 15	N 5	O 14	P 2	0	0
3	B	1	Total 36	C 15	N 5	O 14	P 2	0	0

- Molecule 4 is (1S)-6-chloro-2,3,4,9-tetrahydro-1H-carbazole-1- carboxamide (three-letter code: OCZ) (formula: C₁₃H₁₃ClN₂O).



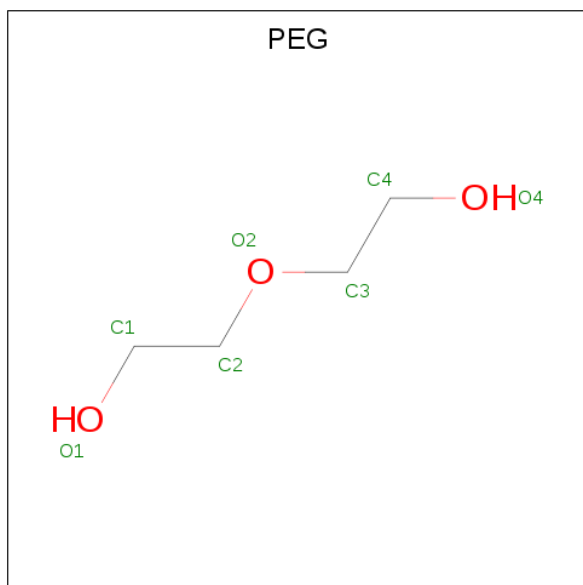
Mol	Chain	Residues	Atoms					ZeroOcc	AltConf
4	A	1	Total	C	Cl	N	O	0	0
			17	13	1	2	1		

Continued on next page...

Continued from previous page...

Mol	Chain	Residues	Atoms					ZeroOcc	AltConf
4	A	1	Total	C	Cl	N	O	0	0
			17	13	1	2	1		
4	B	1	Total	C	Cl	N	O	0	0
			17	13	1	2	1		
4	B	1	Total	C	Cl	N	O	0	0
			17	13	1	2	1		

- Molecule 5 is DI(HYDROXYETHYL)ETHER (three-letter code: PEG) (formula: C₄H₁₀O₃).



Mol	Chain	Residues	Atoms			ZeroOcc	AltConf
5	B	1	Total	C	O	0	0
			7	4	3		

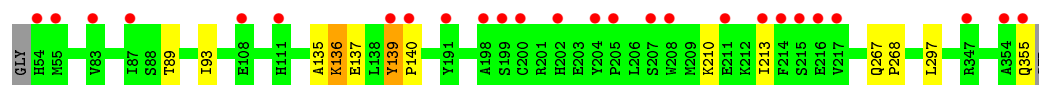
- Molecule 6 is water.

Mol	Chain	Residues	Atoms		ZeroOcc	AltConf
6	A	172	Total	O	0	0
			172	172		
6	B	117	Total	O	0	0
			117	117		

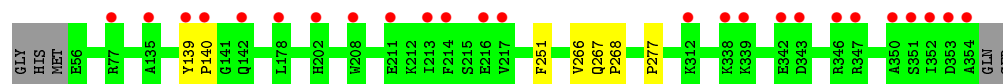
3 Residue-property plots [i](#)

These plots are drawn for all protein, RNA and DNA chains in the entry. The first graphic for a chain summarises the proportions of the various outlier classes displayed in the second graphic. The second graphic shows the sequence view annotated by issues in geometry and electron density. Residues are color-coded according to the number of geometric quality criteria for which they contain at least one outlier: green = 0, yellow = 1, orange = 2 and red = 3 or more. A red dot above a residue indicates a poor fit to the electron density ($RSRZ > 2$). Stretches of 2 or more consecutive residues without any outlier are shown as a green connector. Residues present in the sample, but not in the model, are shown in grey.

- Molecule 1: NAD-dependent protein deacetylase sirtuin-2



- Molecule 1: NAD-dependent protein deacetylase sirtuin-2



4 Data and refinement statistics

Property	Value	Source
Space group	P 21 21 21	Depositor
Cell constants a, b, c, α , β , γ	76.50Å 77.58Å 114.21Å 90.00° 90.00° 90.00°	Depositor
Resolution (Å)	39.41 – 1.76 36.73 – 1.76	Depositor EDS
% Data completeness (in resolution range)	97.6 (39.41-1.76) 97.6 (36.73-1.76)	Depositor EDS
R_{merge}	0.08	Depositor
R_{sym}	(Not available)	Depositor
$\langle I/\sigma(I) \rangle$ ¹	2.27 (at 1.76Å)	Xtriage
Refinement program	REFMAC 5.8.0071	Depositor
R, R_{free}	0.190 , 0.224 0.198 , 0.230	Depositor DCC
R_{free} test set	3367 reflections (5.07%)	wwPDB-VP
Wilson B-factor (Å ²)	27.6	Xtriage
Anisotropy	0.096	Xtriage
Bulk solvent k_{sol} (e/Å ³), B_{sol} (Å ²)	0.33 , 33.2	EDS
L-test for twinning ²	$\langle L \rangle = 0.47$, $\langle L^2 \rangle = 0.31$	Xtriage
Estimated twinning fraction	0.024 for k,h,-l	Xtriage
F_o, F_c correlation	0.96	EDS
Total number of atoms	5222	wwPDB-VP
Average B, all atoms (Å ²)	35.0	wwPDB-VP

Xtriage's analysis on translational NCS is as follows: *The largest off-origin peak in the Patterson function is 4.52% of the height of the origin peak. No significant pseudotranslation is detected.*

¹Intensities estimated from amplitudes.

²Theoretical values of $\langle |L| \rangle$, $\langle L^2 \rangle$ for acentric reflections are 0.5, 0.333 respectively for untwinned datasets, and 0.375, 0.2 for perfectly twinned datasets.

5 Model quality

5.1 Standard geometry

Bond lengths and bond angles in the following residue types are not validated in this section: ZN, PEG, OCZ, AR6

The Z score for a bond length (or angle) is the number of standard deviations the observed value is removed from the expected value. A bond length (or angle) with $|Z| > 5$ is considered an outlier worth inspection. RMSZ is the root-mean-square of all Z scores of the bond lengths (or angles).

Mol	Chain	Bond lengths		Bond angles	
		RMSZ	# Z >5	RMSZ	# Z >5
1	A	0.40	0/2466	0.60	0/3327
1	B	0.38	0/2437	0.59	0/3290
All	All	0.39	0/4903	0.59	0/6617

There are no bond length outliers.

There are no bond angle outliers.

There are no chirality outliers.

There are no planarity outliers.

5.2 Too-close contacts

In the following table, the Non-H and H(model) columns list the number of non-hydrogen atoms and hydrogen atoms in the chain respectively. The H(added) column lists the number of hydrogen atoms added and optimized by MolProbity. The Clashes column lists the number of clashes within the asymmetric unit, whereas Symm-Clashes lists symmetry related clashes.

Mol	Chain	Non-H	H(model)	H(added)	Clashes	Symm-Clashes
1	A	2406	0	2392	10	0
1	B	2378	0	2368	6	0
2	A	1	0	0	0	0
2	B	1	0	0	0	0
3	A	36	0	21	0	0
3	B	36	0	21	0	0
4	A	34	0	26	0	0
4	B	34	0	26	0	0
5	B	7	0	10	0	0
6	A	172	0	0	0	0
6	B	117	0	0	0	0
All	All	5222	0	4864	13	0

The all-atom clashscore is defined as the number of clashes found per 1000 atoms (including hydrogen atoms). The all-atom clashscore for this structure is 1.

All (13) close contacts within the same asymmetric unit are listed below, sorted by their clash magnitude.

Atom-1	Atom-2	Interatomic distance (Å)	Clash overlap (Å)
1:A:297:LEU:HD11	1:B:266[B]:VAL:HG11	1.62	0.81
1:B:267:GLN:HE21	1:B:268:PRO:HA	1.55	0.71
1:A:297:LEU:HD11	1:B:266[B]:VAL:CG1	2.30	0.60
1:A:267:GLN:HE21	1:A:268:PRO:HA	1.68	0.57
1:A:139:TYR:N	1:A:140:PRO:HD2	2.28	0.49
1:A:136:LYS:HG2	1:A:137:GLU:N	2.28	0.48
1:A:135:ALA:O	1:A:139:TYR:HB2	2.15	0.47
1:A:89:THR:HA	1:A:93:ILE:O	2.16	0.46
1:A:139:TYR:N	1:A:140:PRO:CD	2.79	0.46
1:A:297:LEU:CD1	1:B:266[B]:VAL:CG1	2.95	0.44
1:B:251:PHE:O	1:B:277:PRO:HD3	2.18	0.43
1:B:139:TYR:N	1:B:140:PRO:HD2	2.34	0.43
1:A:210:LYS:HA	1:A:213:ILE:HG22	2.02	0.40

There are no symmetry-related clashes.

5.3 Torsion angles [i](#)

5.3.1 Protein backbone [i](#)

In the following table, the Percentiles column shows the percent Ramachandran outliers of the chain as a percentile score with respect to all X-ray entries followed by that with respect to entries of similar resolution.

The Analysed column shows the number of residues for which the backbone conformation was analysed, and the total number of residues.

Mol	Chain	Analysed	Favoured	Allowed	Outliers	Percentiles	
1	A	301/304 (99%)	294 (98%)	7 (2%)	0	100	100
1	B	298/304 (98%)	292 (98%)	6 (2%)	0	100	100
All	All	599/608 (98%)	586 (98%)	13 (2%)	0	100	100

There are no Ramachandran outliers to report.

5.3.2 Protein sidechains [i](#)

In the following table, the Percentiles column shows the percent sidechain outliers of the chain as a percentile score with respect to all X-ray entries followed by that with respect to entries of similar resolution.

The Analysed column shows the number of residues for which the sidechain conformation was analysed, and the total number of residues.

Mol	Chain	Analysed	Rotameric	Outliers	Percentiles	
1	A	264/264 (100%)	261 (99%)	3 (1%)	73	60
1	B	261/264 (99%)	261 (100%)	0	100	100
All	All	525/528 (99%)	522 (99%)	3 (1%)	86	79

All (3) residues with a non-rotameric sidechain are listed below:

Mol	Chain	Res	Type
1	A	136	LYS
1	A	139	TYR
1	A	355	GLN

Some sidechains can be flipped to improve hydrogen bonding and reduce clashes. All (2) such sidechains are listed below:

Mol	Chain	Res	Type
1	A	267	GLN
1	B	267	GLN

5.3.3 RNA [i](#)

There are no RNA molecules in this entry.

5.4 Non-standard residues in protein, DNA, RNA chains [i](#)

There are no non-standard protein/DNA/RNA residues in this entry.

5.5 Carbohydrates [i](#)

There are no carbohydrates in this entry.

5.6 Ligand geometry

Of 9 ligands modelled in this entry, 2 are monoatomic - leaving 7 for Mogul analysis.

In the following table, the Counts columns list the number of bonds (or angles) for which Mogul statistics could be retrieved, the number of bonds (or angles) that are observed in the model and the number of bonds (or angles) that are defined in the Chemical Component Dictionary. The Link column lists molecule types, if any, to which the group is linked. The Z score for a bond length (or angle) is the number of standard deviations the observed value is removed from the expected value. A bond length (or angle) with $|Z| > 2$ is considered an outlier worth inspection. RMSZ is the root-mean-square of all Z scores of the bond lengths (or angles).

Mol	Type	Chain	Res	Link	Bond lengths			Bond angles		
					Counts	RMSZ	# Z > 2	Counts	RMSZ	# Z > 2
4	OCZ	B	403	-	17,19,19	1.10	1 (5%)	18,28,28	0.88	1 (5%)
4	OCZ	B	404	-	17,19,19	0.94	1 (5%)	18,28,28	0.53	0
4	OCZ	A	403	-	17,19,19	0.91	0	18,28,28	1.04	2 (11%)
5	PEG	B	405	-	6,6,6	0.59	0	5,5,5	0.15	0
4	OCZ	A	404	-	17,19,19	0.85	0	18,28,28	0.63	0
3	AR6	B	402	-	34,39,39	0.94	1 (2%)	40,60,60	1.39	5 (12%)
3	AR6	A	402	-	34,39,39	0.95	2 (5%)	40,60,60	1.27	5 (12%)

In the following table, the Chirals column lists the number of chiral outliers, the number of chiral centers analysed, the number of these observed in the model and the number defined in the Chemical Component Dictionary. Similar counts are reported in the Torsion and Rings columns. '-' means no outliers of that kind were identified.

Mol	Type	Chain	Res	Link	Chirals	Torsions	Rings
4	OCZ	B	403	-	-	0/4/14/14	0/3/3/3
4	OCZ	B	404	-	-	4/4/14/14	0/3/3/3
4	OCZ	A	403	-	-	0/4/14/14	0/3/3/3
5	PEG	B	405	-	-	1/4/4/4	-
4	OCZ	A	404	-	-	4/4/14/14	0/3/3/3
3	AR6	B	402	-	-	2/18/54/54	0/4/4/4
3	AR6	A	402	-	-	1/18/54/54	0/4/4/4

All (5) bond length outliers are listed below:

Mol	Chain	Res	Type	Atoms	Z	Observed(Å)	Ideal(Å)
4	B	403	OCZ	CAK-CAO	3.02	1.56	1.53
3	A	402	AR6	O4'-C1'	3.00	1.45	1.41
3	B	402	AR6	O4'-C1'	2.93	1.45	1.41
4	B	404	OCZ	CAK-CAO	2.15	1.55	1.53

Continued on next page...

Continued from previous page...

Mol	Chain	Res	Type	Atoms	Z	Observed(Å)	Ideal(Å)
3	A	402	AR6	C5-C4	2.09	1.46	1.40

All (13) bond angle outliers are listed below:

Mol	Chain	Res	Type	Atoms	Z	Observed(°)	Ideal(°)
3	A	402	AR6	N3-C2-N1	-4.21	122.09	128.68
3	B	402	AR6	N3-C2-N1	-3.91	122.57	128.68
3	A	402	AR6	C1'-N9-C4	-3.19	121.04	126.64
3	B	402	AR6	C1'-N9-C4	-3.16	121.09	126.64
3	B	402	AR6	C2-N1-C6	2.54	123.09	118.75
3	A	402	AR6	C2-N1-C6	2.53	123.08	118.75
3	B	402	AR6	N6-C6-N1	2.52	123.81	118.57
4	A	403	OCZ	CAL-CAK-CAI	2.28	110.51	106.19
4	A	403	OCZ	CAM-CAJ-CAH	-2.21	109.14	112.49
3	A	402	AR6	O1A-PA-O2A	2.16	122.93	112.24
4	B	403	OCZ	CAL-CAK-CAI	2.15	110.27	106.19
3	A	402	AR6	C4-C5-N7	-2.03	107.28	109.40
3	B	402	AR6	O1B-PB-O2B	2.01	122.19	112.24

There are no chirality outliers.

All (12) torsion outliers are listed below:

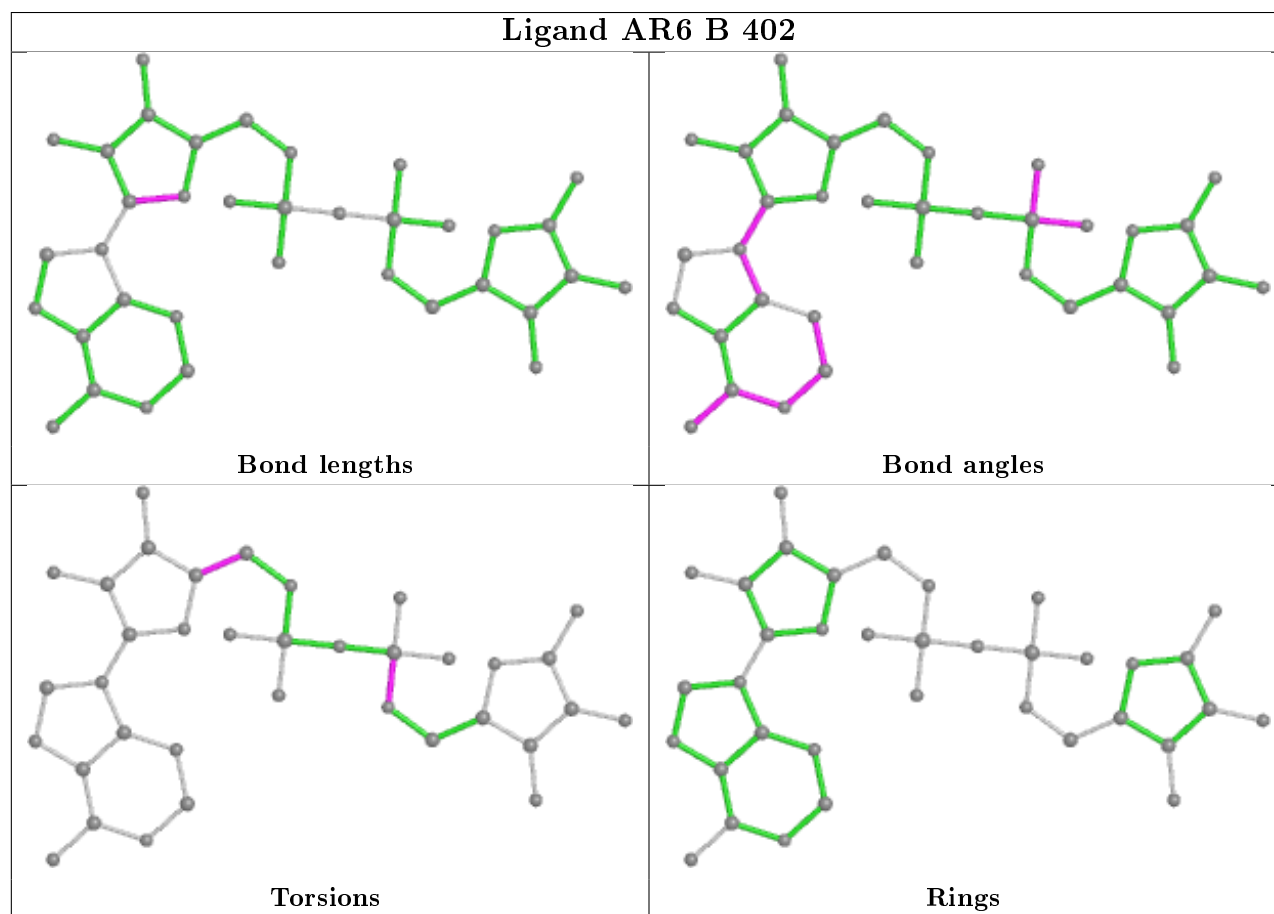
Mol	Chain	Res	Type	Atoms
4	B	404	OCZ	CAI-CAK-CAO-NAQ
4	B	404	OCZ	CAI-CAK-CAO-OAP
4	A	404	OCZ	CAI-CAK-CAO-NAQ
5	B	405	PEG	O1-C1-C2-O2
4	A	404	OCZ	CAL-CAK-CAO-NAQ
4	B	404	OCZ	CAL-CAK-CAO-OAP
4	A	404	OCZ	CAI-CAK-CAO-OAP
4	B	404	OCZ	CAL-CAK-CAO-NAQ
4	A	404	OCZ	CAL-CAK-CAO-OAP
3	B	402	AR6	O4'-C4'-C5'-O5'
3	B	402	AR6	C5D-O5D-PB-O2B
3	A	402	AR6	O4'-C4'-C5'-O5'

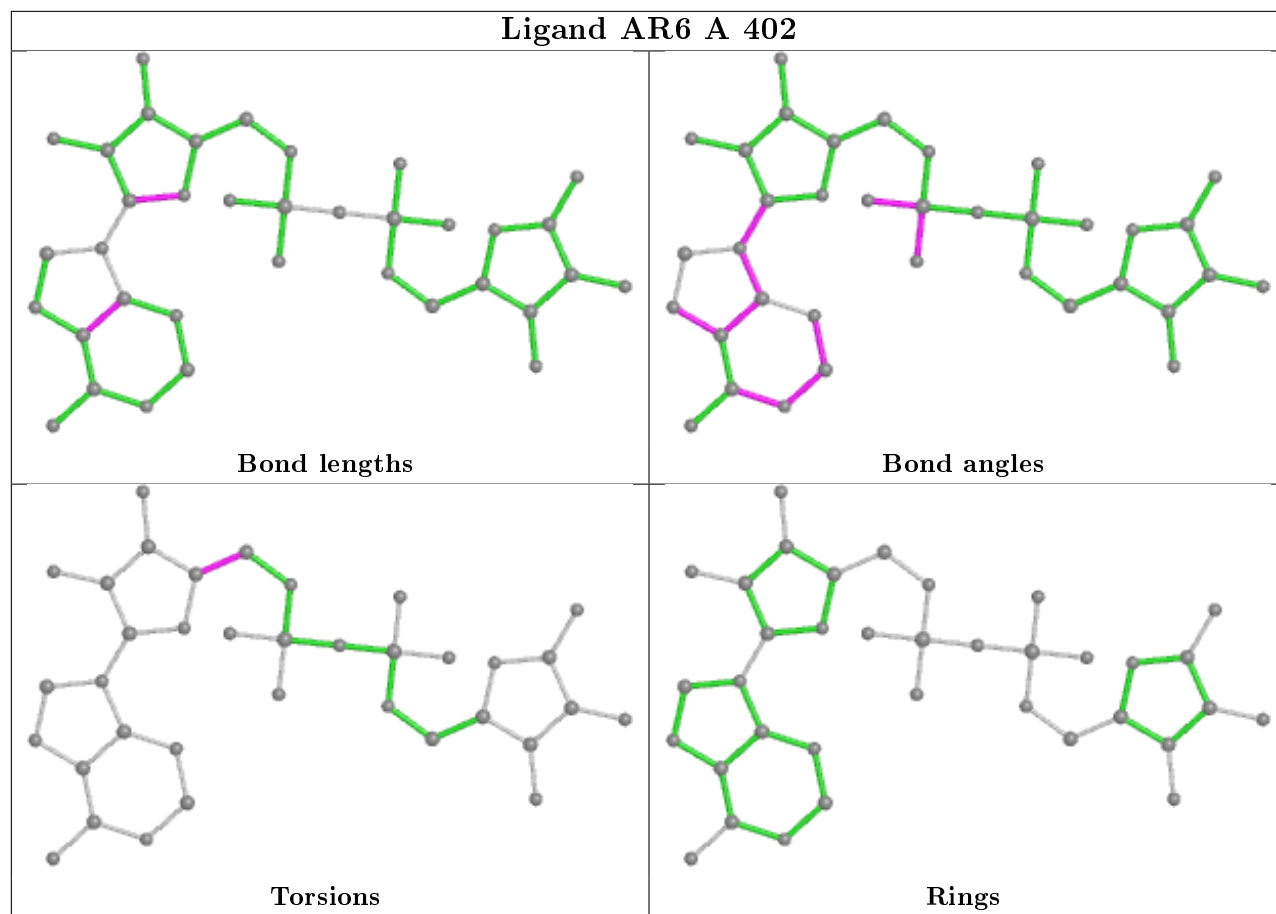
There are no ring outliers.

No monomer is involved in short contacts.

The following is a two-dimensional graphical depiction of Mogul quality analysis of bond lengths, bond angles, torsion angles, and ring geometry for all instances of the Ligand of Interest. In addition, ligands with molecular weight > 250 and outliers as shown on the validation Tables will

also be included. For torsion angles, if less than 5% of the Mogul distribution of torsion angles is within 10 degrees of the torsion angle in question, then that torsion angle is considered an outlier. Any bond that is central to one or more torsion angles identified as an outlier by Mogul will be highlighted in the graph. For rings, the root-mean-square deviation (RMSD) between the ring in question and similar rings identified by Mogul is calculated over all ring torsion angles. If the average RMSD is greater than 60 degrees and the minimal RMSD between the ring in question and any Mogul-identified rings is also greater than 60 degrees, then that ring is considered an outlier. The outliers are highlighted in purple. The color gray indicates Mogul did not find sufficient equivalents in the CSD to analyse the geometry.





5.7 Other polymers [i](#)

There are no such residues in this entry.

5.8 Polymer linkage issues [i](#)

There are no chain breaks in this entry.

6 Fit of model and data

6.1 Protein, DNA and RNA chains

In the following table, the column labelled ‘#RSRZ> 2’ contains the number (and percentage) of RSRZ outliers, followed by percent RSRZ outliers for the chain as percentile scores relative to all X-ray entries and entries of similar resolution. The OWAB column contains the minimum, median, 95th percentile and maximum values of the occupancy-weighted average B-factor per residue. The column labelled ‘Q< 0.9’ lists the number of (and percentage) of residues with an average occupancy less than 0.9.

Mol	Chain	Analysed	<RSRZ>	#RSRZ>2	OWAB(Å ²)	Q<0.9
1	A	302/304 (99%)	0.52	26 (8%) 10 13	17, 28, 63, 82	0
1	B	299/304 (98%)	0.48	25 (8%) 11 14	18, 34, 62, 79	0
All	All	601/608 (98%)	0.50	51 (8%) 10 14	17, 31, 62, 82	0

All (51) RSRZ outliers are listed below:

Mol	Chain	Res	Type	RSRZ
1	A	217	VAL	7.9
1	B	352	ILE	6.7
1	A	139	TYR	5.9
1	A	214	PHE	5.6
1	B	139	TYR	5.5
1	A	208	TRP	5.0
1	A	191	TYR	4.6
1	B	217	VAL	4.3
1	B	140	PRO	4.2
1	B	353	ASP	4.2
1	A	55	MET	4.0
1	A	202	HIS	3.8
1	B	351	SER	3.8
1	B	214	PHE	3.7
1	B	312	LYS	3.6
1	B	343	ASP	3.5
1	B	213	ILE	3.4
1	B	354	ALA	3.4
1	A	355	GLN	3.4
1	A	54	HIS	3.2
1	A	213	ILE	3.2
1	A	199	SER	3.2
1	A	140	PRO	3.2
1	A	211	GLU	3.1

Continued on next page...

Continued from previous page...

Mol	Chain	Res	Type	RSRZ
1	A	198	ALA	3.0
1	B	216	GLU	3.0
1	A	205	PRO	2.9
1	B	339	LYS	2.9
1	B	347	ARG	2.9
1	B	346	ARG	2.8
1	A	354	ALA	2.8
1	A	215	SER	2.8
1	A	347	ARG	2.8
1	A	207	SER	2.7
1	A	204	TYR	2.6
1	A	111	HIS	2.6
1	B	208	TRP	2.5
1	A	87	ILE	2.5
1	A	216	GLU	2.5
1	A	200	CYS	2.5
1	B	142	GLN	2.5
1	B	135	ALA	2.4
1	A	108	GLU	2.4
1	B	342	GLU	2.4
1	B	350	ALA	2.4
1	B	202	HIS	2.2
1	B	178	LEU	2.2
1	B	77	ARG	2.1
1	A	83	VAL	2.1
1	B	211	GLU	2.1
1	B	338	LYS	2.0

6.2 Non-standard residues in protein, DNA, RNA chains [i](#)

There are no non-standard protein/DNA/RNA residues in this entry.

6.3 Carbohydrates [i](#)

There are no carbohydrates in this entry.

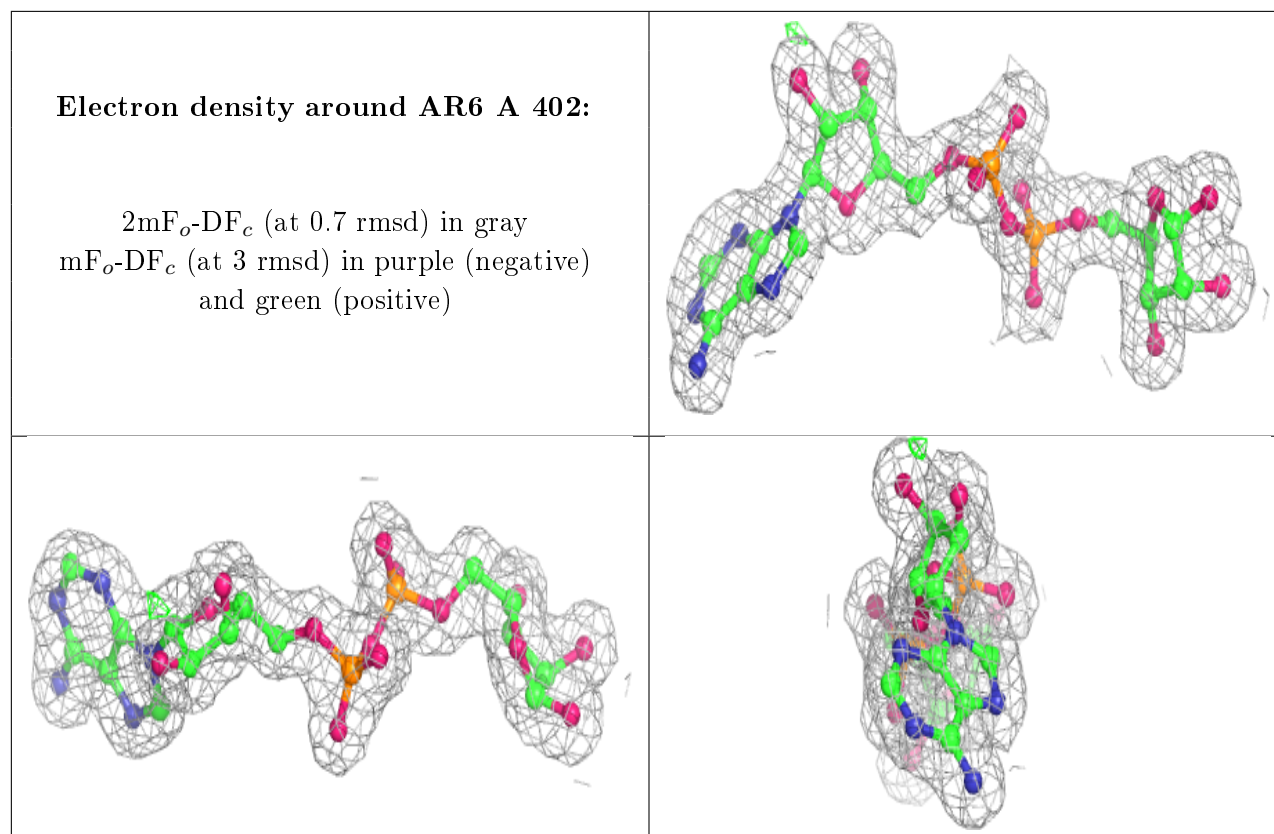
6.4 Ligands [i](#)

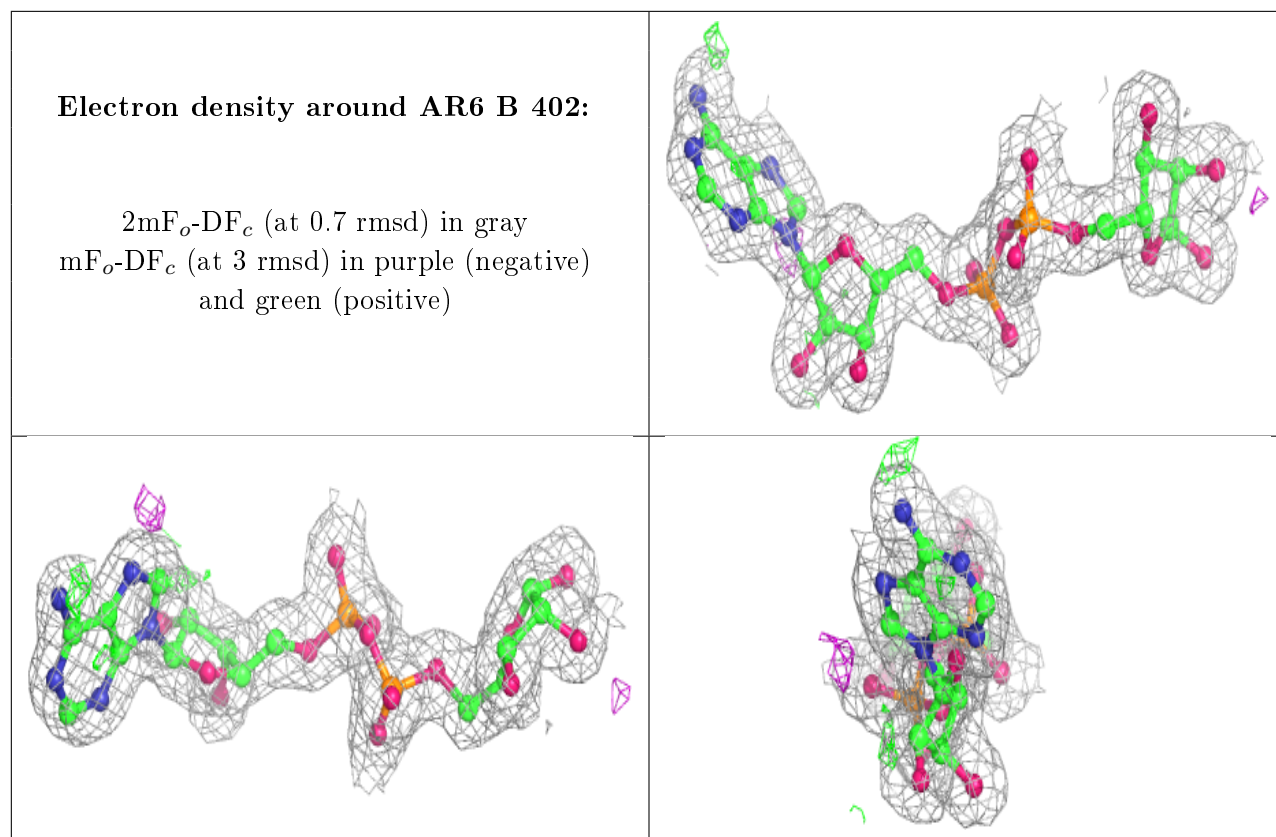
In the following table, the Atoms column lists the number of modelled atoms in the group and the number defined in the chemical component dictionary. The B-factors column lists the minimum,

median, 95th percentile and maximum values of B factors of atoms in the group. The column labelled 'Q<0.9' lists the number of atoms with occupancy less than 0.9.

Mol	Type	Chain	Res	Atoms	RSCC	RSR	B-factors(Å ²)	Q<0.9
5	PEG	B	405	7/7	0.65	0.32	51,55,57,57	0
4	OCZ	A	403	17/17	0.87	0.15	39,43,48,53	0
4	OCZ	B	403	17/17	0.89	0.15	42,46,50,52	0
2	ZN	A	401	1/1	0.91	0.05	54,54,54,54	0
4	OCZ	B	404	17/17	0.95	0.09	23,24,25,27	0
4	OCZ	A	404	17/17	0.96	0.09	20,23,25,26	0
3	AR6	A	402	36/36	0.98	0.10	16,19,21,22	0
3	AR6	B	402	36/36	0.98	0.09	19,21,26,27	0
2	ZN	B	401	1/1	0.99	0.03	35,35,35,35	0

The following is a graphical depiction of the model fit to experimental electron density of all instances of the Ligand of Interest. In addition, ligands with molecular weight > 250 and outliers as shown on the geometry validation Tables will also be included. Each fit is shown from different orientation to approximate a three-dimensional view.





6.5 Other polymers [i](#)

There are no such residues in this entry.