



Full wwPDB X-ray Structure Validation Report ⓘ

May 13, 2020 – 09:05 am BST

PDB ID : 6D7X
Title : Crystal Structure of Rat TRPV6*-Y466A- in complex with brominated 2-Am
inoethoxydiphenyl borate (2-APB-Br)
Authors : Singh, A.K.; Saotome, K.; McGoldrick, L.L.; Sobolevsky, A.I.
Deposited on : 2018-04-25
Resolution : 3.60 Å(reported)

This is a Full wwPDB X-ray Structure Validation Report for a publicly released PDB entry.

We welcome your comments at validation@mail.wwpdb.org

A user guide is available at

<https://www.wwpdb.org/validation/2017/XrayValidationReportHelp>

with specific help available everywhere you see the ⓘ symbol.

The following versions of software and data (see [references ⓘ](#)) were used in the production of this report:

MolProbity : 4.02b-467
Mogul : 1.8.5 (274361), CSD as541be (2020)
Xtriage (Phenix) : 1.13
EDS : 2.11
buster-report : 1.1.7 (2018)
Percentile statistics : 20191225.v01 (using entries in the PDB archive December 25th 2019)
Refmac : 5.8.0158
CCP4 : 7.0.044 (Gargrove)
Ideal geometry (proteins) : Engh & Huber (2001)
Ideal geometry (DNA, RNA) : Parkinson et al. (1996)
Validation Pipeline (wwPDB-VP) : 2.11

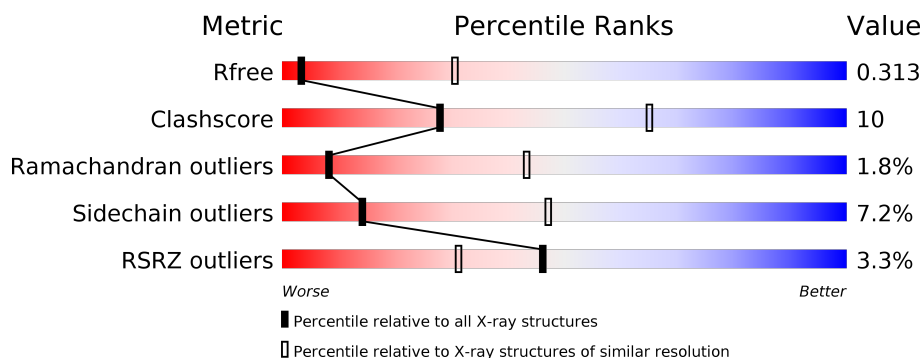
1 Overall quality at a glance

The following experimental techniques were used to determine the structure:

X-RAY DIFFRACTION

The reported resolution of this entry is 3.60 Å.

Percentile scores (ranging between 0-100) for global validation metrics of the entry are shown in the following graphic. The table shows the number of entries on which the scores are based.



Metric	Whole archive (#Entries)	Similar resolution (#Entries, resolution range(Å))
R_{free}	130704	1257 (3.70-3.50)
Clashscore	141614	1353 (3.70-3.50)
Ramachandran outliers	138981	1307 (3.70-3.50)
Sidechain outliers	138945	1307 (3.70-3.50)
RSRZ outliers	127900	1161 (3.70-3.50)

The table below summarises the geometric issues observed across the polymeric chains and their fit to the electron density. The red, orange, yellow and green segments on the lower bar indicate the fraction of residues that contain outliers for ≥ 3 , 2, 1 and 0 types of geometric quality criteria respectively. A grey segment represents the fraction of residues that are not modelled. The numeric value for each fraction is indicated below the corresponding segment, with a dot representing fractions $\leq 5\%$. The upper red bar (where present) indicates the fraction of residues that have poor fit to the electron density. The numeric value is given above the bar.

Mol	Chain	Length	Quality of chain
1	A	672	

The following table lists non-polymeric compounds, carbohydrate monomers and non-standard residues in protein, DNA, RNA chains that are outliers for geometric or electron-density-fit criteria:

Mol	Type	Chain	Res	Chirality	Geometry	Clashes	Electron density
4	DTB	A	704	X	-	-	-

2 Entry composition

There are 4 unique types of molecules in this entry. The entry contains 4807 atoms, of which 0 are hydrogens and 0 are deuteriums.

In the tables below, the ZeroOcc column contains the number of atoms modelled with zero occupancy, the AltConf column contains the number of residues with at least one atom in alternate conformation and the Trace column contains the number of residues modelled with at most 2 atoms.

- Molecule 1 is a protein called Transient receptor potential cation channel subfamily V member 6.

Mol	Chain	Residues	Atoms					ZeroOcc	AltConf	Trace
1	A	600	Total	C	N	O	S	0	0	0
			4772	3087	799	852	34			

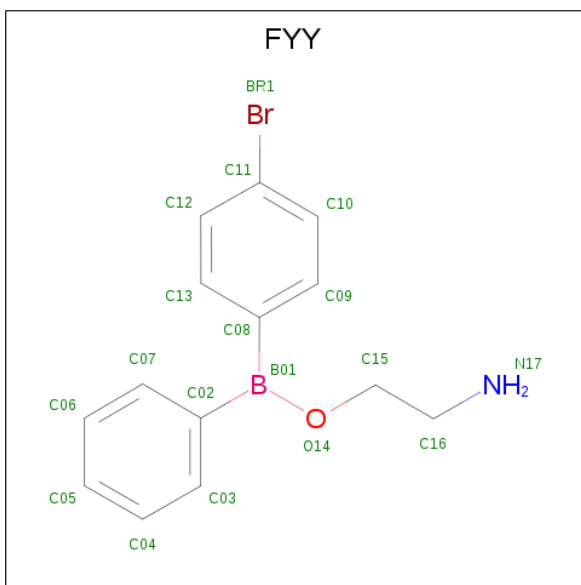
There are 7 discrepancies between the modelled and reference sequences:

Chain	Residue	Modelled	Actual	Comment	Reference
A	62	TYR	ILE	conflict	UNP Q9R186
A	92	ASN	LEU	conflict	UNP Q9R186
A	96	GLN	MET	conflict	UNP Q9R186
A	466	ALA	TYR	engineered mutation	UNP Q9R186
A	670	VAL	-	expression tag	UNP Q9R186
A	671	PRO	-	expression tag	UNP Q9R186
A	672	ARG	-	expression tag	UNP Q9R186

- Molecule 2 is CALCIUM ION (three-letter code: CA) (formula: Ca).

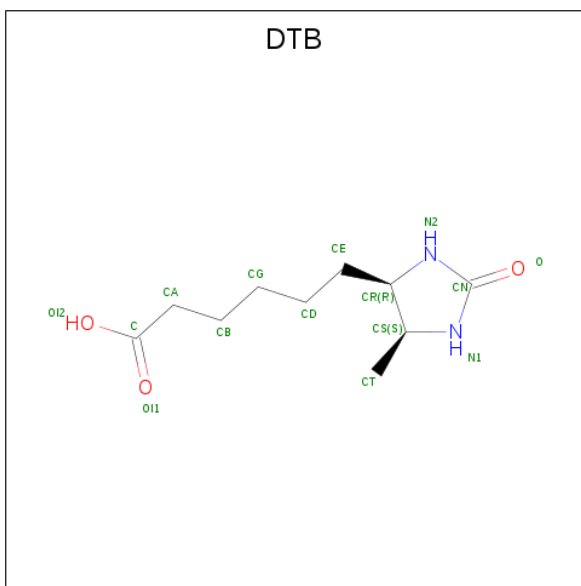
Mol	Chain	Residues	Atoms		ZeroOcc	AltConf
2	A	2	Total	Ca	0	0
			2	2		

- Molecule 3 is 2-aminoethyl (4-bromophenyl)phenylborinate (three-letter code: FYY) (formula: C₁₄H₁₅BBrNO).



Mol	Chain	Residues	Atoms						ZeroOcc	AltConf
3	A	1	Total	B	Br	C	N	O	0	0
			18	1	1	14	1	1		

- Molecule 4 is 6-(5-METHYL-2-OXO-IMIDAZOLIDIN-4-YL)-HEXANOIC ACID (three-letter code: DTB) (formula: $C_{10}H_{18}N_2O_3$).

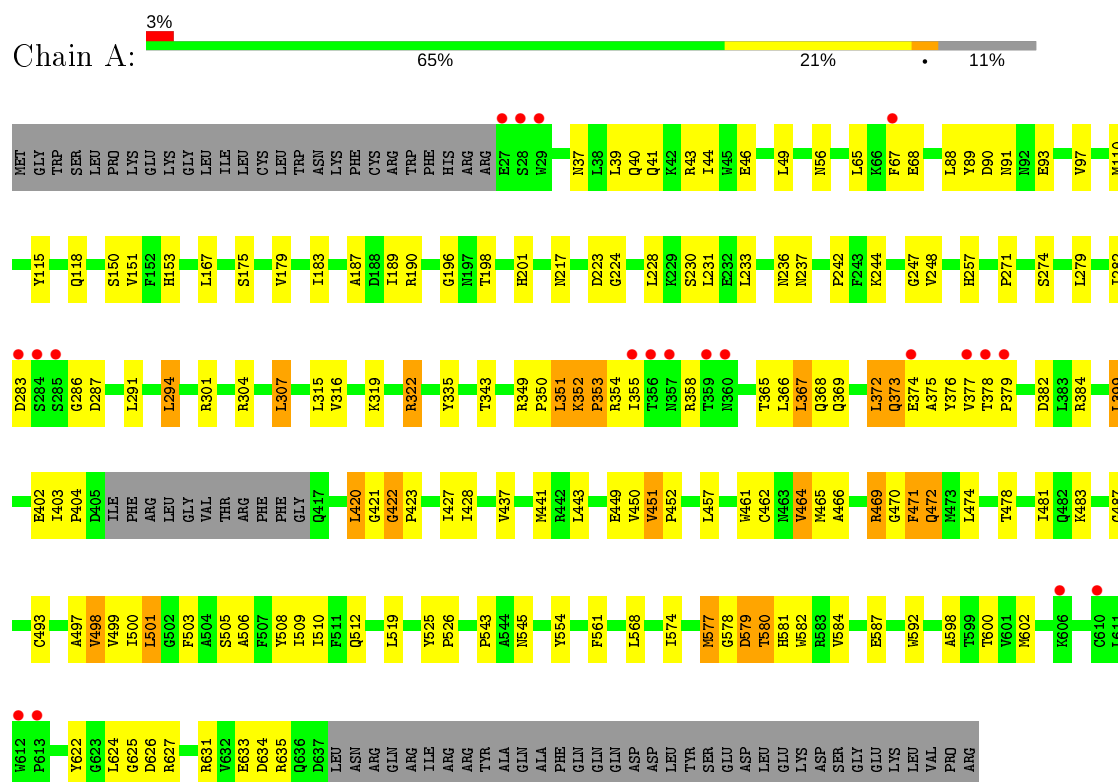


Mol	Chain	Residues	Atoms				ZeroOcc	AltConf
4	A	1	Total	C	N	O	0	0
			15	10	2	3		

3 Residue-property plots [i](#)

These plots are drawn for all protein, RNA and DNA chains in the entry. The first graphic for a chain summarises the proportions of the various outlier classes displayed in the second graphic. The second graphic shows the sequence view annotated by issues in geometry and electron density. Residues are color-coded according to the number of geometric quality criteria for which they contain at least one outlier: green = 0, yellow = 1, orange = 2 and red = 3 or more. A red dot above a residue indicates a poor fit to the electron density ($RSRZ > 2$). Stretches of 2 or more consecutive residues without any outlier are shown as a green connector. Residues present in the sample, but not in the model, are shown in grey.

- Molecule 1: Transient receptor potential cation channel subfamily V member 6



4 Data and refinement statistics

Property	Value	Source
Space group	P 4 21 2	Depositor
Cell constants a, b, c, α , β , γ	144.35Å 144.35Å 113.37Å 90.00° 90.00° 90.00°	Depositor
Resolution (Å)	46.54 – 3.60 46.54 – 3.60	Depositor EDS
% Data completeness (in resolution range)	97.7 (46.54-3.60) 96.9 (46.54-3.60)	Depositor EDS
R_{merge}	(Not available)	Depositor
R_{sym}	(Not available)	Depositor
$\langle I/\sigma(I) \rangle$ ¹	2.09 (at 3.57Å)	Xtriage
Refinement program	PHENIX (1.12_2829: ???)	Depositor
R, R_{free}	0.282 , 0.316 0.283 , 0.313	Depositor DCC
R_{free} test set	699 reflections (5.01%)	wwPDB-VP
Wilson B-factor (Å ²)	119.1	Xtriage
Anisotropy	0.442	Xtriage
Bulk solvent k_{sol} (e/Å ³), B_{sol} (Å ²)	0.29 , 68.9	EDS
L-test for twinning ²	$\langle L \rangle = 0.45$, $\langle L^2 \rangle = 0.28$	Xtriage
Estimated twinning fraction	No twinning to report.	Xtriage
F_o, F_c correlation	0.82	EDS
Total number of atoms	4807	wwPDB-VP
Average B, all atoms (Å ²)	114.0	wwPDB-VP

Xtriage's analysis on translational NCS is as follows: *The largest off-origin peak in the Patterson function is 3.93% of the height of the origin peak. No significant pseudotranslation is detected.*

¹Intensities estimated from amplitudes.

²Theoretical values of $\langle |L| \rangle$, $\langle L^2 \rangle$ for acentric reflections are 0.5, 0.333 respectively for untwinned datasets, and 0.375, 0.2 for perfectly twinned datasets.

5 Model quality [i](#)

5.1 Standard geometry [i](#)

Bond lengths and bond angles in the following residue types are not validated in this section: DTB, CA, FYY

The Z score for a bond length (or angle) is the number of standard deviations the observed value is removed from the expected value. A bond length (or angle) with $|Z| > 5$ is considered an outlier worth inspection. RMSZ is the root-mean-square of all Z scores of the bond lengths (or angles).

Mol	Chain	Bond lengths		Bond angles	
		RMSZ	$\# Z > 5$	RMSZ	$\# Z > 5$
1	A	0.26	0/4880	0.45	2/6630 (0.0%)

There are no bond length outliers.

All (2) bond angle outliers are listed below:

Mol	Chain	Res	Type	Atoms	Z	Observed($^{\circ}$)	Ideal($^{\circ}$)
1	A	404	PRO	N-CA-CB	6.20	110.74	103.30
1	A	579	ASP	N-CA-C	-5.45	96.29	111.00

There are no chirality outliers.

There are no planarity outliers.

5.2 Too-close contacts [i](#)

In the following table, the Non-H and H(model) columns list the number of non-hydrogen atoms and hydrogen atoms in the chain respectively. The H(added) column lists the number of hydrogen atoms added and optimized by MolProbity. The Clashes column lists the number of clashes within the asymmetric unit, whereas Symm-Clashes lists symmetry related clashes.

Mol	Chain	Non-H	H(model)	H(added)	Clashes	Symm-Clashes
1	A	4772	0	4794	94	0
2	A	2	0	0	0	0
3	A	18	0	0	3	0
4	A	15	0	13	1	0
All	All	4807	0	4807	95	0

The all-atom clashscore is defined as the number of clashes found per 1000 atoms (including hydrogen atoms). The all-atom clashscore for this structure is 10.

All (95) close contacts within the same asymmetric unit are listed below, sorted by their clash magnitude.

Atom-1	Atom-2	Interatomic distance (Å)	Clash overlap (Å)
1:A:577:MET:N	1:A:577:MET:SD	2.59	0.75
1:A:420:LEU:O	1:A:422:GLY:N	2.22	0.72
1:A:354:ARG:HD3	1:A:358:ARG:HB3	1.73	0.71
1:A:493:CYS:O	1:A:497:ALA:N	2.24	0.70
1:A:580:THR:N	1:A:584:VAL:HG21	2.07	0.69
1:A:578:GLY:H	1:A:580:THR:HG22	1.57	0.69
1:A:230:SER:HB3	1:A:233:LEU:HD23	1.77	0.67
1:A:343:THR:HG21	1:A:461:TRP:HE1	1.60	0.66
1:A:279:LEU:HD22	1:A:283:ASP:HB2	1.83	0.60
1:A:196:GLY:HA3	1:A:237:ASN:HB3	1.82	0.60
1:A:351:LEU:HB2	1:A:352:LYS:HB3	1.84	0.60
1:A:115:TYR:CE2	4:A:704:DTB:HCT2	2.37	0.60
1:A:352:LYS:HD2	1:A:355:ILE:HD13	1.84	0.58
1:A:584:VAL:HA	1:A:587:GLU:HB2	1.86	0.58
1:A:335:TYR:HD2	1:A:464:VAL:HG23	1.68	0.58
1:A:354:ARG:HH12	1:A:365:THR:HG22	1.69	0.57
1:A:183:ILE:HD13	1:A:187:ALA:HB3	1.87	0.57
1:A:367:LEU:HG	1:A:369:GLN:HE21	1.69	0.56
1:A:498:VAL:O	1:A:500:ILE:N	2.37	0.56
1:A:437:VAL:O	1:A:441:MET:N	2.31	0.56
1:A:470:GLY:H	1:A:592:TRP:HE1	1.54	0.55
1:A:519:LEU:HD21	1:A:543:PRO:HB3	1.89	0.55
1:A:89:TYR:O	1:A:91:ASN:N	2.39	0.55
1:A:301:ARG:HG3	1:A:304:ARG:HH12	1.71	0.55
1:A:579:ASP:C	1:A:584:VAL:HG21	2.27	0.55
1:A:373:GLN:HA	1:A:374:GLU:HB2	1.88	0.54
1:A:349:ARG:HH22	1:A:450:VAL:HG22	1.73	0.54
1:A:498:VAL:HA	1:A:501:LEU:HD11	1.91	0.52
1:A:279:LEU:HD23	1:A:282:ILE:HB	1.92	0.51
1:A:307:LEU:H	1:A:307:LEU:HD13	1.76	0.51
1:A:498:VAL:HG12	1:A:499:VAL:H	1.75	0.51
1:A:372:LEU:HG	1:A:373:GLN:HB3	1.93	0.50
3:A:703:FYY:C15	3:A:703:FYY:C08	2.89	0.50
1:A:506:ALA:O	1:A:510:ILE:HG12	2.11	0.50
1:A:579:ASP:HA	1:A:584:VAL:HG11	1.94	0.50
1:A:519:LEU:HD13	1:A:545:ASN:HB2	1.93	0.49
1:A:271:PRO:HB2	1:A:635:ARG:HG3	1.95	0.48
1:A:43:ARG:NH1	1:A:46:GLU:OE1	2.47	0.48
1:A:274:SER:HB2	1:A:631:ARG:HH11	1.78	0.48
1:A:478:THR:O	1:A:481:ILE:HG22	2.14	0.47

Continued on next page...

Continued from previous page...

Atom-1	Atom-2	Interatomic distance (Å)	Clash overlap (Å)
1:A:150:SER:HA	1:A:153:HIS:CE1	2.50	0.47
1:A:402:GLU:OE2	3:A:703:FYY:N17	2.48	0.47
1:A:352:LYS:HE2	1:A:374:GLU:HG2	1.97	0.47
1:A:349:ARG:HH12	1:A:450:VAL:HG22	1.79	0.47
1:A:625:GLY:HA3	1:A:626:ASP:HA	1.61	0.47
1:A:223:ASP:OD1	1:A:224:GLY:N	2.49	0.46
1:A:236:ASN:OD1	1:A:237:ASN:N	2.48	0.46
1:A:217:ASN:OD1	1:A:257:HIS:NE2	2.46	0.46
1:A:378:THR:HB	1:A:382:ASP:N	2.30	0.46
1:A:634:ASP:N	1:A:634:ASP:OD1	2.48	0.45
1:A:274:SER:HA	1:A:633:GLU:HA	1.97	0.45
1:A:110:MET:HB2	1:A:115:TYR:O	2.16	0.45
1:A:167:LEU:HD21	1:A:189:ILE:HG22	1.98	0.45
1:A:399:LEU:O	1:A:403:ILE:HG12	2.17	0.45
1:A:244:LYS:HB2	1:A:244:LYS:HE3	1.79	0.44
1:A:462:CYS:O	1:A:465:MET:HG2	2.17	0.44
1:A:316:VAL:HA	1:A:319:LYS:HB2	1.99	0.44
1:A:354:ARG:HB2	1:A:368:GLN:HA	2.00	0.44
1:A:508:TYR:O	1:A:512:GLN:N	2.50	0.44
1:A:190:ARG:HD2	1:A:231:LEU:HD13	2.00	0.44
1:A:358:ARG:HH12	1:A:367:LEU:HD23	1.82	0.44
1:A:466:ALA:O	1:A:469:ARG:HB3	2.18	0.43
1:A:67:PHE:HA	1:A:68:GLU:HA	1.66	0.43
1:A:505:SER:O	1:A:509:ILE:HG12	2.19	0.43
1:A:198:THR:OG1	1:A:201:HIS:ND1	2.40	0.43
1:A:598:ALA:HB1	3:A:703:FYY:BR1	2.74	0.43
1:A:201:HIS:CE1	1:A:242:PRO:HD3	2.54	0.43
1:A:503:PHE:CD1	1:A:561:PHE:HB2	2.53	0.43
1:A:40:GLN:O	1:A:44:ILE:HG12	2.18	0.43
1:A:93:GLU:O	1:A:97:VAL:HG23	2.19	0.43
1:A:352:LYS:HB2	1:A:353:PRO:HD2	2.00	0.42
1:A:175:SER:O	1:A:179:VAL:HG23	2.19	0.42
1:A:248:VAL:HG22	1:A:294:LEU:HB3	2.00	0.42
1:A:279:LEU:HD23	1:A:279:LEU:HA	1.88	0.42
1:A:350:PRO:HG3	1:A:384:ARG:NH1	2.33	0.42
1:A:247:GLY:HA3	1:A:291:LEU:HD11	2.02	0.42
1:A:422:GLY:H	1:A:423:PRO:HD3	1.85	0.42
1:A:376:TYR:HB3	1:A:378:THR:HG23	2.01	0.42
1:A:375:ALA:HA	1:A:376:TYR:HA	1.68	0.42
1:A:451:VAL:HG13	1:A:452:PRO:HD3	2.02	0.42
1:A:110:MET:HG3	1:A:118:GLN:HB3	2.02	0.41

Continued on next page...

Continued from previous page...

Atom-1	Atom-2	Interatomic distance (Å)	Clash overlap (Å)
1:A:574:ILE:O	1:A:577:MET:HB2	2.20	0.41
1:A:335:TYR:CD2	1:A:464:VAL:HG23	2.50	0.41
1:A:322:ARG:HD3	1:A:322:ARG:HA	1.94	0.41
1:A:428:ILE:HD12	1:A:428:ILE:HA	1.82	0.41
1:A:525:TYR:N	1:A:526:PRO:HD2	2.35	0.41
1:A:470:GLY:N	1:A:592:TRP:HE1	2.18	0.41
1:A:422:GLY:HA2	1:A:469:ARG:NH2	2.36	0.41
1:A:510:ILE:HG21	1:A:554:TYR:HB2	2.03	0.41
1:A:470:GLY:O	1:A:472:GLN:N	2.53	0.41
1:A:286:GLY:HA3	1:A:287:ASP:HA	1.84	0.40
1:A:319:LYS:HB3	1:A:600:THR:HG21	2.02	0.40
1:A:37:ASN:O	1:A:41:GLN:HG2	2.22	0.40
1:A:56:ASN:HB2	1:A:91:ASN:ND2	2.36	0.40
1:A:372:LEU:HA	1:A:372:LEU:HD12	1.80	0.40

There are no symmetry-related clashes.

5.3 Torsion angles

5.3.1 Protein backbone

In the following table, the Percentiles column shows the percent Ramachandran outliers of the chain as a percentile score with respect to all X-ray entries followed by that with respect to entries of similar resolution.

The Analysed column shows the number of residues for which the backbone conformation was analysed, and the total number of residues.

Mol	Chain	Analysed	Favoured	Allowed	Outliers	Percentiles
1	A	596/672 (89%)	534 (90%)	51 (9%)	11 (2%)	<div>8</div> <div>43</div>

All (11) Ramachandran outliers are listed below:

Mol	Chain	Res	Type
1	A	90	ASP
1	A	379	PRO
1	A	421	GLY
1	A	487	GLY
1	A	581	HIS
1	A	471	PHE
1	A	580	THR

Continued on next page...

Continued from previous page...

Mol	Chain	Res	Type
1	A	377	VAL
1	A	353	PRO
1	A	422	GLY
1	A	498	VAL

5.3.2 Protein sidechains ⓘ

In the following table, the Percentiles column shows the percent sidechain outliers of the chain as a percentile score with respect to all X-ray entries followed by that with respect to entries of similar resolution.

The Analysed column shows the number of residues for which the sidechain conformation was analysed, and the total number of residues.

Mol	Chain	Analysed	Rotameric	Outliers	Percentiles	
1	A	513/583 (88%)	476 (93%)	37 (7%)	14	47

All (37) residues with a non-rotameric sidechain are listed below:

Mol	Chain	Res	Type
1	A	39	LEU
1	A	49	LEU
1	A	65	LEU
1	A	88	LEU
1	A	151	VAL
1	A	228	LEU
1	A	294	LEU
1	A	307	LEU
1	A	315	LEU
1	A	322	ARG
1	A	351	LEU
1	A	352	LYS
1	A	366	LEU
1	A	367	LEU
1	A	372	LEU
1	A	373	GLN
1	A	399	LEU
1	A	420	LEU
1	A	427	ILE
1	A	443	LEU
1	A	449	GLU
1	A	451	VAL

Continued on next page...

Continued from previous page...

Mol	Chain	Res	Type
1	A	457	LEU
1	A	464	VAL
1	A	469	ARG
1	A	471	PHE
1	A	472	GLN
1	A	474	LEU
1	A	483	LYS
1	A	501	LEU
1	A	568	LEU
1	A	577	MET
1	A	582	TRP
1	A	602	MET
1	A	622	TYR
1	A	624	LEU
1	A	627	ARG

Some sidechains can be flipped to improve hydrogen bonding and reduce clashes. All (2) such sidechains are listed below:

Mol	Chain	Res	Type
1	A	425	HIS
1	A	463	ASN

5.3.3 RNA [i](#)

There are no RNA molecules in this entry.

5.4 Non-standard residues in protein, DNA, RNA chains [i](#)

There are no non-standard protein/DNA/RNA residues in this entry.

5.5 Carbohydrates [i](#)

There are no carbohydrates in this entry.

5.6 Ligand geometry [i](#)

Of 4 ligands modelled in this entry, 2 are monoatomic - leaving 2 for Mogul analysis.

In the following table, the Counts columns list the number of bonds (or angles) for which Mogul statistics could be retrieved, the number of bonds (or angles) that are observed in the model and the number of bonds (or angles) that are defined in the Chemical Component Dictionary. The Link column lists molecule types, if any, to which the group is linked. The Z score for a bond length (or angle) is the number of standard deviations the observed value is removed from the expected value. A bond length (or angle) with $|Z| > 2$ is considered an outlier worth inspection. RMSZ is the root-mean-square of all Z scores of the bond lengths (or angles).

Mol	Type	Chain	Res	Link	Bond lengths			Bond angles		
					Counts	RMSZ	# $ Z > 2$	Counts	RMSZ	# $ Z > 2$
4	DTB	A	704	1	12,15,15	5.02	4 (33%)	12,19,19	4.24	5 (41%)
3	FYY	A	703	1	17,19,19	0.72	0	19,24,24	1.41	3 (15%)

In the following table, the Chirals column lists the number of chiral outliers, the number of chiral centers analysed, the number of these observed in the model and the number defined in the Chemical Component Dictionary. Similar counts are reported in the Torsion and Rings columns. '-' means no outliers of that kind were identified.

Mol	Type	Chain	Res	Link	Chirals	Torsions	Rings
4	DTB	A	704	1	2/2/4/6	4/6/20/20	0/1/1/1
3	FYY	A	703	1	-	8/12/12/12	0/2/2/2

All (4) bond length outliers are listed below:

Mol	Chain	Res	Type	Atoms	Z	Observed(Å)	Ideal(Å)
4	A	704	DTB	CS-N1	-11.13	1.33	1.46
4	A	704	DTB	O-CN	8.88	1.42	1.23
4	A	704	DTB	CR-N2	-8.81	1.32	1.46
4	A	704	DTB	CS-CR	-4.26	1.40	1.52

All (8) bond angle outliers are listed below:

Mol	Chain	Res	Type	Atoms	Z	Observed(°)	Ideal(°)
4	A	704	DTB	CT-CS-N1	12.60	126.71	111.70
4	A	704	DTB	CR-CS-N1	4.01	107.32	102.43
4	A	704	DTB	CS-N1-CN	-3.88	108.13	112.42
4	A	704	DTB	CS-CR-N2	3.51	106.57	102.17
3	A	703	FYY	C07-C02-C03	3.01	120.24	116.88
3	A	703	FYY	C13-C08-C09	2.95	120.18	116.88
4	A	704	DTB	CR-N2-CN	-2.68	108.96	112.46
3	A	703	FYY	C12-C13-C08	-2.57	119.41	121.81

All (2) chirality outliers are listed below:

Mol	Chain	Res	Type	Atom
4	A	704	DTB	CS
4	A	704	DTB	CR

All (12) torsion outliers are listed below:

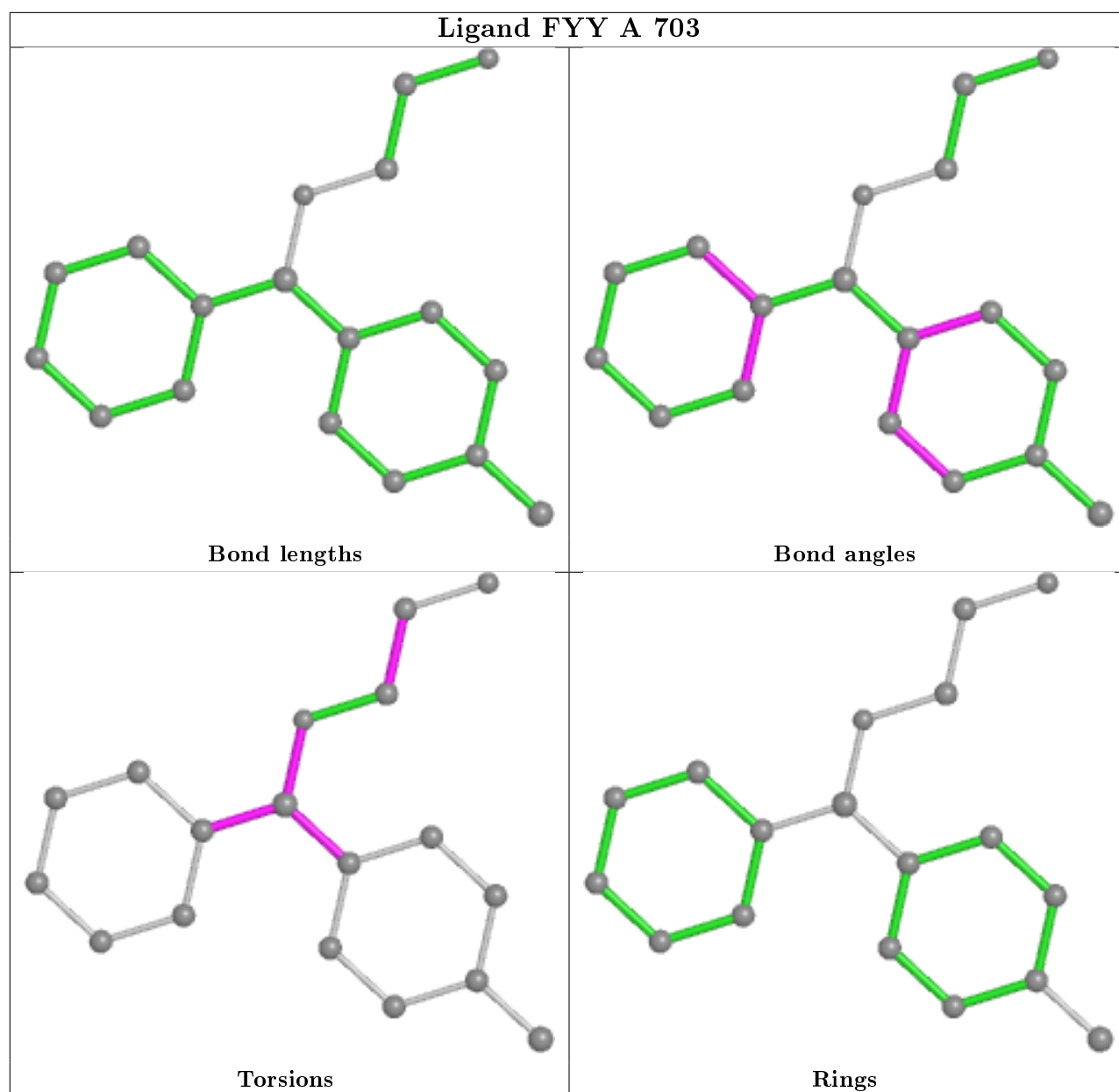
Mol	Chain	Res	Type	Atoms
4	A	704	DTB	CD-CE-CR-N2
3	A	703	FYY	C02-B01-O14-C15
3	A	703	FYY	O14-C15-C16-N17
4	A	704	DTB	CE-CD-CG-CB
3	A	703	FYY	O14-B01-C02-C03
3	A	703	FYY	O14-B01-C02-C07
3	A	703	FYY	O14-B01-C08-C09
3	A	703	FYY	O14-B01-C08-C13
4	A	704	DTB	C-CA-CB-CG
4	A	704	DTB	CA-CB-CG-CD
3	A	703	FYY	C02-B01-C08-C09
3	A	703	FYY	C02-B01-C08-C13

There are no ring outliers.

2 monomers are involved in 4 short contacts:

Mol	Chain	Res	Type	Clashes	Symm-Clashes
4	A	704	DTB	1	0
3	A	703	FYY	3	0

The following is a two-dimensional graphical depiction of Mogul quality analysis of bond lengths, bond angles, torsion angles, and ring geometry for all instances of the Ligand of Interest. In addition, ligands with molecular weight > 250 and outliers as shown on the validation Tables will also be included. For torsion angles, if less than 5% of the Mogul distribution of torsion angles is within 10 degrees of the torsion angle in question, then that torsion angle is considered an outlier. Any bond that is central to one or more torsion angles identified as an outlier by Mogul will be highlighted in the graph. For rings, the root-mean-square deviation (RMSD) between the ring in question and similar rings identified by Mogul is calculated over all ring torsion angles. If the average RMSD is greater than 60 degrees and the minimal RMSD between the ring in question and any Mogul-identified rings is also greater than 60 degrees, then that ring is considered an outlier. The outliers are highlighted in purple. The color gray indicates Mogul did not find sufficient equivalents in the CSD to analyse the geometry.



5.7 Other polymers [i](#)

There are no such residues in this entry.

5.8 Polymer linkage issues [i](#)

There are no chain breaks in this entry.

6 Fit of model and data ⓘ

6.1 Protein, DNA and RNA chains ⓘ

In the following table, the column labelled ‘#RSRZ> 2’ contains the number (and percentage) of RSRZ outliers, followed by percent RSRZ outliers for the chain as percentile scores relative to all X-ray entries and entries of similar resolution. The OWAB column contains the minimum, median, 95th percentile and maximum values of the occupancy-weighted average B-factor per residue. The column labelled ‘Q< 0.9’ lists the number of (and percentage) of residues with an average occupancy less than 0.9.

Mol	Chain	Analysed	<RSRZ>	#RSRZ>2	OWAB(Å ²)	Q<0.9
1	A	600/672 (89%)	0.04	20 (3%) 46 31	30, 109, 160, 197	0

All (20) RSRZ outliers are listed below:

Mol	Chain	Res	Type	RSRZ
1	A	355	ILE	5.0
1	A	27	GLU	4.4
1	A	377	VAL	4.4
1	A	610	CYS	4.2
1	A	360	ASN	4.0
1	A	359	THR	3.9
1	A	285	SER	3.8
1	A	284	SER	3.6
1	A	374	GLU	3.2
1	A	357	ASN	3.1
1	A	356	THR	3.0
1	A	28	SER	2.9
1	A	67	PHE	2.9
1	A	379	PRO	2.8
1	A	283	ASP	2.6
1	A	612	TRP	2.5
1	A	378	THR	2.4
1	A	613	PRO	2.3
1	A	606	LYS	2.2
1	A	29	TRP	2.1

6.2 Non-standard residues in protein, DNA, RNA chains ⓘ

There are no non-standard protein/DNA/RNA residues in this entry.

6.3 Carbohydrates

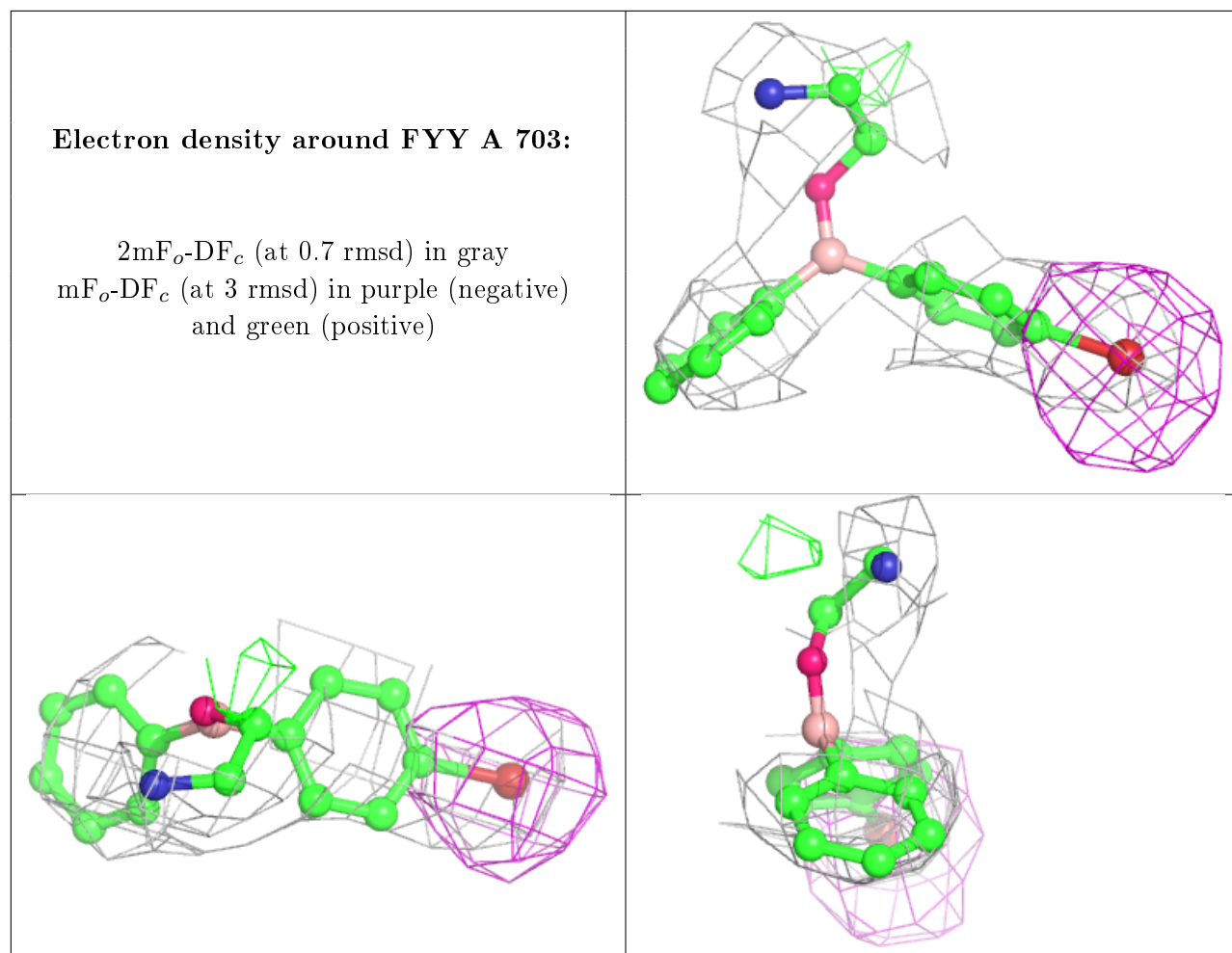
There are no carbohydrates in this entry.

6.4 Ligands

In the following table, the Atoms column lists the number of modelled atoms in the group and the number defined in the chemical component dictionary. The B-factors column lists the minimum, median, 95th percentile and maximum values of B factors of atoms in the group. The column labelled 'Q< 0.9' lists the number of atoms with occupancy less than 0.9.

Mol	Type	Chain	Res	Atoms	RSCC	RSR	B-factors(Å ²)	Q<0.9
3	FYY	A	703	18/18	0.66	0.40	107,112,117,117	0
4	DTB	A	704	15/15	0.85	0.39	30,30,30,30	0
2	CA	A	702	1/1	0.86	3.02	135,135,135,135	1
2	CA	A	701	1/1	0.98	0.54	134,134,134,134	1

The following is a graphical depiction of the model fit to experimental electron density of all instances of the Ligand of Interest. In addition, ligands with molecular weight > 250 and outliers as shown on the geometry validation Tables will also be included. Each fit is shown from different orientation to approximate a three-dimensional view.



6.5 Other polymers [i](#)

There are no such residues in this entry.