



Full wwPDB X-ray Structure Validation Report ⓘ

May 13, 2020 – 05:14 am BST

PDB ID : 1DAA
Title : CRYSTALLOGRAPHIC STRUCTURE OF D-AMINO ACID AMINO-TRANSFERASE COMPLEXED WITH PYRIDOXAL-5'-PHOSPHATE
Authors : Sugio, S.; Peisach, D.; Ringe, D.
Deposited on : 1995-06-09
Resolution : 1.94 Å(reported)

This is a Full wwPDB X-ray Structure Validation Report for a publicly released PDB entry.

We welcome your comments at validation@mail.wwpdb.org

A user guide is available at

<https://www.wwpdb.org/validation/2017/XrayValidationReportHelp>

with specific help available everywhere you see the ⓘ symbol.

The following versions of software and data (see [references ⓘ](#)) were used in the production of this report:

MolProbity : 4.02b-467
Mogul : 1.8.5 (274361), CSD as541be (2020)
Xtriage (Phenix) : **NOT EXECUTED**
EDS : **NOT EXECUTED**
Percentile statistics : 20191225.v01 (using entries in the PDB archive December 25th 2019)
Ideal geometry (proteins) : Engh & Huber (2001)
Ideal geometry (DNA, RNA) : Parkinson et al. (1996)
Validation Pipeline (wwPDB-VP) : 2.11

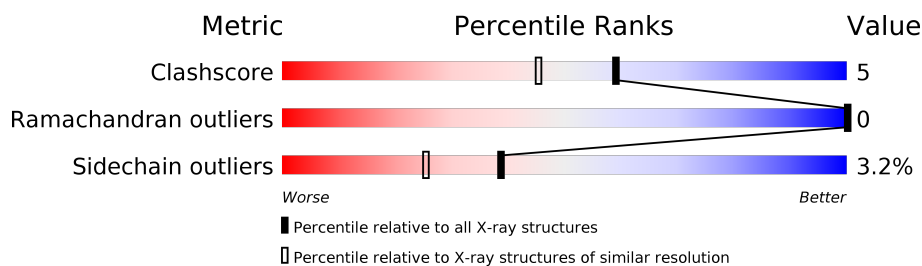
1 Overall quality at a glance

The following experimental techniques were used to determine the structure:

X-RAY DIFFRACTION

The reported resolution of this entry is 1.94 Å.

Percentile scores (ranging between 0-100) for global validation metrics of the entry are shown in the following graphic. The table shows the number of entries on which the scores are based.



Metric	Whole archive (#Entries)	Similar resolution (#Entries, resolution range(Å))
Clashscore	141614	1023 (1.94-1.94)
Ramachandran outliers	138981	1007 (1.94-1.94)
Sidechain outliers	138945	1007 (1.94-1.94)

The table below summarises the geometric issues observed across the polymeric chains and their fit to the electron density. The red, orange, yellow and green segments on the lower bar indicate the fraction of residues that contain outliers for ≥ 3 , 2, 1 and 0 types of geometric quality criteria respectively. A grey segment represents the fraction of residues that are not modelled. The numeric value for each fraction is indicated below the corresponding segment, with a dot representing fractions $\leq 5\%$.

Note EDS was not executed.

Mol	Chain	Length	Quality of chain
1	A	282	
1	B	282	

2 Entry composition [i](#)

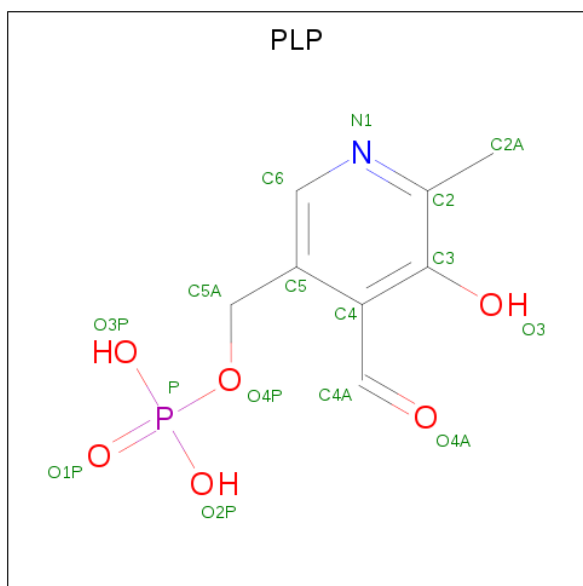
There are 3 unique types of molecules in this entry. The entry contains 4728 atoms, of which 0 are hydrogens and 0 are deuteriums.

In the tables below, the ZeroOcc column contains the number of atoms modelled with zero occupancy, the AltConf column contains the number of residues with at least one atom in alternate conformation and the Trace column contains the number of residues modelled with at most 2 atoms.

- Molecule 1 is a protein called D-AMINO ACID AMINOTRANSFERASE.

Mol	Chain	Residues	Atoms					ZeroOcc	AltConf	Trace
1	A	277	Total	C	N	O	S	31	0	0
			2232	1420	382	423	7			
1	B	277	Total	C	N	O	S	44	0	0
			2232	1420	382	423	7			

- Molecule 2 is PYRIDOXAL-5'-PHOSPHATE (three-letter code: PLP) (formula: $C_8H_{10}NO_6P$).



Mol	Chain	Residues	Atoms					ZeroOcc	AltConf
2	A	1	Total	C	N	O	P	0	0
			16	8	1	6	1		
2	B	1	Total	C	N	O	P	0	0
			16	8	1	6	1		

- Molecule 3 is water.


Mol	Chain	Residues	Atoms		ZeroOcc	AltConf
3	A	119	Total 119	O 119	0	0
3	B	113	Total 113	O 113	0	0

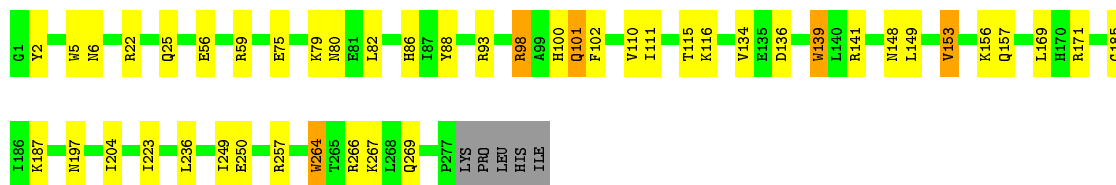
3 Residue-property plots

These plots are drawn for all protein, RNA and DNA chains in the entry. The first graphic for a chain summarises the proportions of the various outlier classes displayed in the second graphic. The second graphic shows the sequence view annotated by issues in geometry. Residues are color-coded according to the number of geometric quality criteria for which they contain at least one outlier: green = 0, yellow = 1, orange = 2 and red = 3 or more. Stretches of 2 or more consecutive residues without any outlier are shown as a green connector. Residues present in the sample, but not in the model, are shown in grey.


Note EDS was not executed.

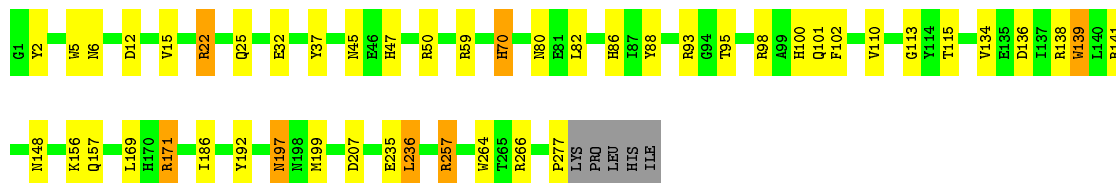
• Molecule 1: D-AMINO ACID AMINOTRANSFERASE

Chain A: 



• Molecule 1: D-AMINO ACID AMINOTRANSFERASE

Chain B: 



4 Data and refinement statistics

Xtriage (Phenix) and EDS were not executed - this section is therefore incomplete.

Property	Value	Source
Space group	P 1 21 1	Depositor
Cell constants a, b, c, α , β , γ	58.50 Å 76.20 Å 73.30 Å 90.00° 103.90° 90.00°	Depositor
Resolution (Å)	10.00 – 1.94	Depositor
% Data completeness (in resolution range)	88.0 (10.00-1.94)	Depositor
R_{merge}	0.06	Depositor
R_{sym}	(Not available)	Depositor
Refinement program	X-PLOR 3.1	Depositor
R, R_{free}	0.184 , (Not available)	Depositor
Estimated twinning fraction	No twinning to report.	Xtriage
Total number of atoms	4728	wwPDB-VP
Average B, all atoms (Å ²)	16.0	wwPDB-VP

5 Model quality ⓘ

5.1 Standard geometry ⓘ

Bond lengths and bond angles in the following residue types are not validated in this section: PLP

The Z score for a bond length (or angle) is the number of standard deviations the observed value is removed from the expected value. A bond length (or angle) with $|Z| > 5$ is considered an outlier worth inspection. RMSZ is the root-mean-square of all Z scores of the bond lengths (or angles).

Mol	Chain	Bond lengths		Bond angles	
		RMSZ	# Z >5	RMSZ	# Z >5
1	A	0.76	0/2277	1.30	22/3081 (0.7%)
1	B	0.73	0/2277	1.32	22/3081 (0.7%)
All	All	0.75	0/4554	1.31	44/6162 (0.7%)

There are no bond length outliers.

All (44) bond angle outliers are listed below:

Mol	Chain	Res	Type	Atoms	Z	Observed(°)	Ideal(°)
1	B	22	ARG	NE-CZ-NH2	-15.25	112.68	120.30
1	B	22	ARG	NE-CZ-NH1	12.85	126.72	120.30
1	A	171	ARG	NE-CZ-NH2	-10.15	115.22	120.30
1	B	171	ARG	NE-CZ-NH1	8.93	124.76	120.30
1	A	264	TRP	CD1-CG-CD2	8.68	113.24	106.30
1	B	171	ARG	NE-CZ-NH2	-8.40	116.10	120.30
1	B	264	TRP	CD1-CG-CD2	8.34	112.97	106.30
1	B	5	TRP	CD1-CG-CD2	7.90	112.62	106.30
1	B	139	TRP	CD1-CG-CD2	7.74	112.49	106.30
1	A	59	ARG	NE-CZ-NH2	-7.67	116.46	120.30
1	A	59	ARG	NE-CZ-NH1	7.62	124.11	120.30
1	A	5	TRP	CD1-CG-CD2	7.61	112.39	106.30
1	B	59	ARG	NE-CZ-NH2	-7.59	116.50	120.30
1	A	257	ARG	NE-CZ-NH1	7.55	124.08	120.30
1	A	264	TRP	CE2-CD2-CG	-7.52	101.28	107.30
1	A	139	TRP	CD1-CG-CD2	7.49	112.29	106.30
1	A	139	TRP	CE2-CD2-CG	-7.13	101.60	107.30
1	B	264	TRP	CE2-CD2-CG	-7.10	101.62	107.30
1	B	236	LEU	CA-CB-CG	7.07	131.55	115.30
1	A	141	ARG	NE-CZ-NH1	7.06	123.83	120.30
1	A	88	TYR	CB-CG-CD2	-6.98	116.81	121.00
1	B	139	TRP	CE2-CD2-CG	-6.93	101.75	107.30

Continued on next page...

Continued from previous page...

Mol	Chain	Res	Type	Atoms	Z	Observed(°)	Ideal(°)
1	A	5	TRP	CE2-CD2-CG	-6.71	101.93	107.30
1	B	5	TRP	CE2-CD2-CG	-6.61	102.01	107.30
1	A	98	ARG	NE-CZ-NH1	6.55	123.57	120.30
1	A	187	LYS	CA-CB-CG	-6.50	99.09	113.40
1	B	50	ARG	NE-CZ-NH1	6.08	123.34	120.30
1	A	171	ARG	NE-CZ-NH1	5.97	123.28	120.30
1	B	192	TYR	CB-CG-CD2	-5.56	117.67	121.00
1	A	93	ARG	NE-CZ-NH2	-5.46	117.57	120.30
1	A	264	TRP	CG-CD1-NE1	-5.45	104.65	110.10
1	B	207	ASP	CB-CG-OD1	5.44	123.20	118.30
1	A	22	ARG	NE-CZ-NH2	-5.38	117.61	120.30
1	A	257	ARG	NE-CZ-NH2	-5.32	117.64	120.30
1	B	5	TRP	CG-CD1-NE1	-5.18	104.92	110.10
1	B	264	TRP	CG-CD1-NE1	-5.18	104.92	110.10
1	B	141	ARG	NE-CZ-NH1	5.15	122.88	120.30
1	B	138	ARG	NE-CZ-NH1	5.14	122.87	120.30
1	B	138	ARG	NE-CZ-NH2	-5.12	117.74	120.30
1	A	141	ARG	NE-CZ-NH2	-5.10	117.75	120.30
1	B	266	ARG	NE-CZ-NH1	5.06	122.83	120.30
1	A	204	ILE	CA-CB-CG1	-5.05	101.41	111.00
1	B	257	ARG	NE-CZ-NH1	5.03	122.81	120.30
1	A	22	ARG	NE-CZ-NH1	5.01	122.81	120.30

There are no chirality outliers.

There are no planarity outliers.

5.2 Too-close contacts ⓘ

In the following table, the Non-H and H(model) columns list the number of non-hydrogen atoms and hydrogen atoms in the chain respectively. The H(added) column lists the number of hydrogen atoms added and optimized by MolProbity. The Clashes column lists the number of clashes within the asymmetric unit, whereas Symm-Clashes lists symmetry related clashes.

Mol	Chain	Non-H	H(model)	H(added)	Clashes	Symm-Clashes
1	A	2232	0	2239	21	0
1	B	2232	0	2239	27	0
2	A	16	0	8	0	0
2	B	16	0	8	0	0
3	A	119	0	0	2	0
3	B	113	0	0	3	0
All	All	4728	0	4494	41	0

The all-atom clashscore is defined as the number of clashes found per 1000 atoms (including hydrogen atoms). The all-atom clashscore for this structure is 5.

All (41) close contacts within the same asymmetric unit are listed below, sorted by their clash magnitude.

Atom-1	Atom-2	Interatomic distance (Å)	Clash overlap (Å)
1:A:100:HIS:HB2	1:B:156:LYS:HD2	1.69	0.75
1:B:2:TYR:H	1:B:80:ASN:HD21	1.36	0.74
1:A:266:ARG:HH11	1:A:269:GLN:HE22	1.42	0.66
1:B:6:ASN:HD21	1:B:110:VAL:HA	1.62	0.64
1:A:2:TYR:H	1:A:80:ASN:HD21	1.47	0.62
1:B:25:GLN:HE22	1:B:98:ARG:HB2	1.71	0.55
1:A:6:ASN:HD21	1:A:110:VAL:HA	1.74	0.52
1:A:86:HIS:HD2	3:A:652:HOH:O	1.92	0.52
1:B:37:TYR:HB2	1:B:277:PRO:HG2	1.91	0.52
1:A:157:GLN:NE2	1:B:102:PHE:H	2.07	0.51
1:B:47:HIS:HE1	3:B:715:HOH:O	1.93	0.50
1:A:101:GLN:HB3	1:B:156:LYS:HD3	1.92	0.49
1:B:82:LEU:HD22	1:B:115:THR:HB	1.95	0.49
1:B:134:VAL:O	1:B:169:LEU:HA	2.11	0.49
1:A:157:GLN:NE2	1:B:101:GLN:HB2	2.29	0.48
1:B:136:ASP:HB3	1:B:171:ARG:HG2	1.95	0.48
1:A:149:LEU:O	1:A:153:VAL:HG13	2.14	0.47
1:A:185:GLY:HA2	1:A:236:LEU:HD23	1.95	0.47
1:A:264:TRP:HA	1:A:267:LYS:HG2	1.95	0.47
1:A:102:PHE:H	1:B:157:GLN:NE2	2.13	0.47
3:A:732:HOH:O	1:B:86:HIS:HE1	1.98	0.47
1:A:134:VAL:O	1:A:169:LEU:HA	2.15	0.47
1:B:197:ASN:ND2	1:B:199:MET:H	2.13	0.46
1:B:45:ASN:HD21	1:B:70:HIS:HD2	1.61	0.46
1:A:136:ASP:HB2	1:A:169:LEU:HB3	1.98	0.46
1:A:75:GLU:O	1:A:79:LYS:HG2	2.17	0.45
1:B:12:ASP:O	1:B:15:VAL:HG12	2.17	0.45
1:A:6:ASN:HA	1:A:111:ILE:HB	1.99	0.44
1:B:45:ASN:HD21	1:B:70:HIS:CD2	2.37	0.43
1:B:171:ARG:HD2	3:B:688:HOH:O	2.18	0.43
1:B:32:GLU:OE1	1:B:47:HIS:HD2	2.01	0.43
1:A:82:LEU:HD22	1:A:115:THR:HB	2.01	0.43
1:A:25:GLN:HE22	1:A:98:ARG:HB2	1.83	0.42
1:B:22:ARG:HD2	1:B:93:ARG:HB3	2.02	0.42
1:B:186:ILE:HB	1:B:235:GLU:HB2	2.01	0.42
1:B:86:HIS:HD2	3:B:608:HOH:O	2.03	0.42
1:B:2:TYR:H	1:B:80:ASN:ND2	2.10	0.41

Continued on next page...

Continued from previous page...

Atom-1	Atom-2	Interatomic distance (Å)	Clash overlap (Å)
1:A:153:VAL:HB	1:B:100:HIS:O	2.21	0.41
1:A:249:ILE:HD12	1:A:250:GLU:HB2	2.03	0.41
1:A:101:GLN:HB2	1:B:157:GLN:NE2	2.37	0.40
1:B:88:TYR:O	1:B:113:GLY:HA2	2.22	0.40

There are no symmetry-related clashes.

5.3 Torsion angles [i](#)

5.3.1 Protein backbone [i](#)

In the following table, the Percentiles column shows the percent Ramachandran outliers of the chain as a percentile score with respect to all X-ray entries followed by that with respect to entries of similar resolution.

The Analysed column shows the number of residues for which the backbone conformation was analysed, and the total number of residues.

Mol	Chain	Analysed	Favoured	Allowed	Outliers	Percentiles	
1	A	275/282 (98%)	263 (96%)	12 (4%)	0	100	100
1	B	275/282 (98%)	265 (96%)	10 (4%)	0	100	100
All	All	550/564 (98%)	528 (96%)	22 (4%)	0	100	100

There are no Ramachandran outliers to report.

5.3.2 Protein sidechains [i](#)

In the following table, the Percentiles column shows the percent sidechain outliers of the chain as a percentile score with respect to all X-ray entries followed by that with respect to entries of similar resolution.

The Analysed column shows the number of residues for which the sidechain conformation was analysed, and the total number of residues.

Mol	Chain	Analysed	Rotameric	Outliers	Percentiles	
1	A	247/252 (98%)	238 (96%)	9 (4%)	35	20
1	B	247/252 (98%)	240 (97%)	7 (3%)	43	29
All	All	494/504 (98%)	478 (97%)	16 (3%)	39	25

All (16) residues with a non-rotameric sidechain are listed below:

Mol	Chain	Res	Type
1	A	56	GLU
1	A	101	GLN
1	A	116	LYS
1	A	139	TRP
1	A	148	ASN
1	A	153	VAL
1	A	156	LYS
1	A	197	ASN
1	A	223	ILE
1	B	70	HIS
1	B	95	THR
1	B	139	TRP
1	B	148	ASN
1	B	197	ASN
1	B	236	LEU
1	B	257	ARG

Some sidechains can be flipped to improve hydrogen bonding and reduce clashes. All (21) such sidechains are listed below:

Mol	Chain	Res	Type
1	A	6	ASN
1	A	25	GLN
1	A	80	ASN
1	A	86	HIS
1	A	101	GLN
1	A	157	GLN
1	A	160	HIS
1	A	172	ASN
1	A	182	ASN
1	A	197	ASN
1	A	269	GLN
1	B	6	ASN
1	B	25	GLN
1	B	45	ASN
1	B	47	HIS
1	B	80	ASN
1	B	86	HIS
1	B	90	GLN
1	B	157	GLN
1	B	182	ASN
1	B	197	ASN

5.3.3 RNA ⓘ

There are no RNA molecules in this entry.

5.4 Non-standard residues in protein, DNA, RNA chains ⓘ

There are no non-standard protein/DNA/RNA residues in this entry.

5.5 Carbohydrates ⓘ

There are no carbohydrates in this entry.

5.6 Ligand geometry ⓘ

2 ligands are modelled in this entry.

In the following table, the Counts columns list the number of bonds (or angles) for which Mogul statistics could be retrieved, the number of bonds (or angles) that are observed in the model and the number of bonds (or angles) that are defined in the Chemical Component Dictionary. The Link column lists molecule types, if any, to which the group is linked. The Z score for a bond length (or angle) is the number of standard deviations the observed value is removed from the expected value. A bond length (or angle) with $|Z| > 2$ is considered an outlier worth inspection. RMSZ is the root-mean-square of all Z scores of the bond lengths (or angles).

Mol	Type	Chain	Res	Link	Bond lengths			Bond angles		
					Counts	RMSZ	# Z > 2	Counts	RMSZ	# Z > 2
2	PLP	B	285	-	16,16,16	1.57	5 (31%)	20,23,23	1.87	4 (20%)
2	PLP	A	285	-	16,16,16	1.66	3 (18%)	20,23,23	1.28	3 (15%)

In the following table, the Chirals column lists the number of chiral outliers, the number of chiral centers analysed, the number of these observed in the model and the number defined in the Chemical Component Dictionary. Similar counts are reported in the Torsion and Rings columns. '-' means no outliers of that kind were identified.

Mol	Type	Chain	Res	Link	Chirals	Torsions	Rings
2	PLP	B	285	-	-	3/8/8/8	0/1/1/1
2	PLP	A	285	-	-	0/8/8/8	0/1/1/1

All (8) bond length outliers are listed below:

Mol	Chain	Res	Type	Atoms	Z	Observed(Å)	Ideal(Å)
2	A	285	PLP	C4-C4A	4.51	1.56	1.46

Continued on next page...

Continued from previous page...

Mol	Chain	Res	Type	Atoms	Z	Observed(Å)	Ideal(Å)
2	B	285	PLP	C4-C5	-2.69	1.38	1.42
2	B	285	PLP	C4-C4A	2.55	1.52	1.46
2	B	285	PLP	C2A-C2	2.44	1.54	1.50
2	B	285	PLP	C2-N1	2.22	1.38	1.33
2	A	285	PLP	C2-N1	2.18	1.38	1.33
2	B	285	PLP	C6-N1	2.15	1.39	1.34
2	A	285	PLP	C3-C2	-2.08	1.38	1.40

All (7) bond angle outliers are listed below:

Mol	Chain	Res	Type	Atoms	Z	Observed(°)	Ideal(°)
2	B	285	PLP	O4A-C4A-C4	-5.76	112.37	124.91
2	B	285	PLP	O2P-P-O4P	-2.94	98.92	106.73
2	B	285	PLP	C3-C4-C5	2.68	120.32	118.26
2	A	285	PLP	O4A-C4A-C4	-2.41	119.66	124.91
2	B	285	PLP	O3P-P-O1P	2.39	120.05	110.68
2	A	285	PLP	O3P-P-O1P	2.15	119.09	110.68
2	A	285	PLP	O2P-P-O4P	-2.15	101.02	106.73

There are no chirality outliers.

All (3) torsion outliers are listed below:

Mol	Chain	Res	Type	Atoms
2	B	285	PLP	C3-C4-C4A-O4A
2	B	285	PLP	C5-C4-C4A-O4A
2	B	285	PLP	C5A-O4P-P-O1P

There are no ring outliers.

No monomer is involved in short contacts.

5.7 Other polymers [i](#)

There are no such residues in this entry.

5.8 Polymer linkage issues [i](#)

There are no chain breaks in this entry.

6 Fit of model and data ⓘ

6.1 Protein, DNA and RNA chains ⓘ

EDS was not executed - this section is therefore empty.

6.2 Non-standard residues in protein, DNA, RNA chains ⓘ

EDS was not executed - this section is therefore empty.

6.3 Carbohydrates ⓘ

EDS was not executed - this section is therefore empty.

6.4 Ligands ⓘ

EDS was not executed - this section is therefore empty.

6.5 Other polymers ⓘ

EDS was not executed - this section is therefore empty.