



# Full wwPDB X-ray Structure Validation Report ⓘ

May 14, 2020 – 10:24 pm BST

PDB ID : 1DAJ  
Title : COMPARISON OF TERNARY COMPLEXES OF PNEUMOCYSTIS CARINII AND WILD TYPE HUMAN DIHYDROFOLATE REDUCTASE WITH COENZYME NADPH AND A NOVEL CLASSICAL ANTITUMOR FURO[2,3D]PYRIMIDINE ANTIFOLATE  
Authors : Cody, V.; Galitsky, N.; Luft, J.R.; Pangborn, W.; Gangjee, A.; Devraj, R.; Queener, S.F.; Blakley, R.L.  
Deposited on : 1997-07-29  
Resolution : 2.30 Å(reported)

This is a Full wwPDB X-ray Structure Validation Report for a publicly released PDB entry.

We welcome your comments at [validation@mail.wwpdb.org](mailto:validation@mail.wwpdb.org)

A user guide is available at

<https://www.wwpdb.org/validation/2017/XrayValidationReportHelp>

with specific help available everywhere you see the ⓘ symbol.

---

The following versions of software and data (see [references ⓘ](#)) were used in the production of this report:

MolProbity : 4.02b-467  
Mogul : 1.8.5 (274361), CSD as541be (2020)  
Xtriage (Phenix) : **NOT EXECUTED**  
EDS : **NOT EXECUTED**  
buster-report : 1.1.7 (2018)  
Percentile statistics : 20191225.v01 (using entries in the PDB archive December 25th 2019)  
Ideal geometry (proteins) : Engh & Huber (2001)  
Ideal geometry (DNA, RNA) : Parkinson et al. (1996)  
Validation Pipeline (wwPDB-VP) : 2.11

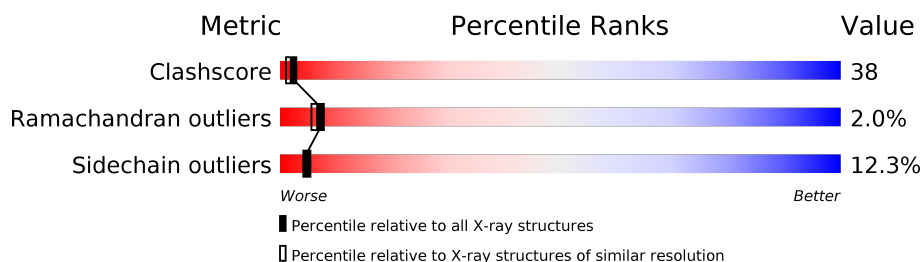
# 1 Overall quality at a glance

The following experimental techniques were used to determine the structure:

*X-RAY DIFFRACTION*

The reported resolution of this entry is 2.30 Å.

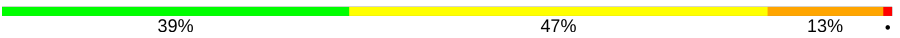
Percentile scores (ranging between 0-100) for global validation metrics of the entry are shown in the following graphic. The table shows the number of entries on which the scores are based.



Metric	Whole archive (#Entries)	Similar resolution (#Entries, resolution range(Å))
Clashscore	141614	5643 (2.30-2.30)
Ramachandran outliers	138981	5575 (2.30-2.30)
Sidechain outliers	138945	5575 (2.30-2.30)

The table below summarises the geometric issues observed across the polymeric chains and their fit to the electron density. The red, orange, yellow and green segments on the lower bar indicate the fraction of residues that contain outliers for  $\geq 3$ , 2, 1 and 0 types of geometric quality criteria respectively. A grey segment represents the fraction of residues that are not modelled. The numeric value for each fraction is indicated below the corresponding segment, with a dot representing fractions  $\leq 5\%$ .

Note EDS was not executed.

Mol	Chain	Length	Quality of chain
1	A	206	

## 2 Entry composition [i](#)

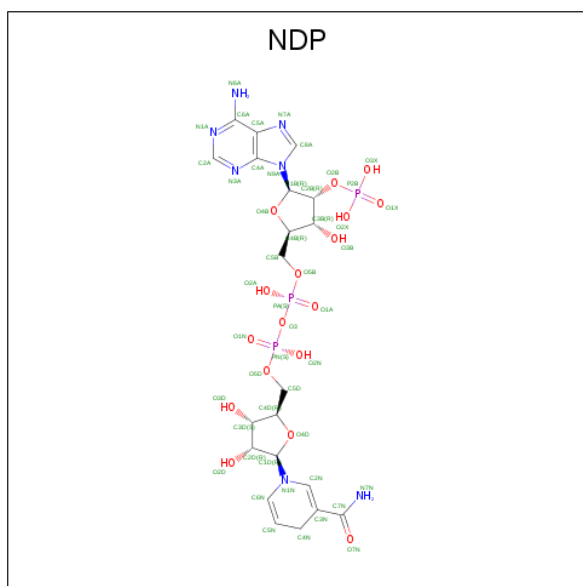
There are 4 unique types of molecules in this entry. The entry contains 1816 atoms, of which 0 are hydrogens and 0 are deuteriums.

In the tables below, the ZeroOcc column contains the number of atoms modelled with zero occupancy, the AltConf column contains the number of residues with at least one atom in alternate conformation and the Trace column contains the number of residues modelled with at most 2 atoms.

- Molecule 1 is a protein called DIHYDROFOLATE REDUCTASE.

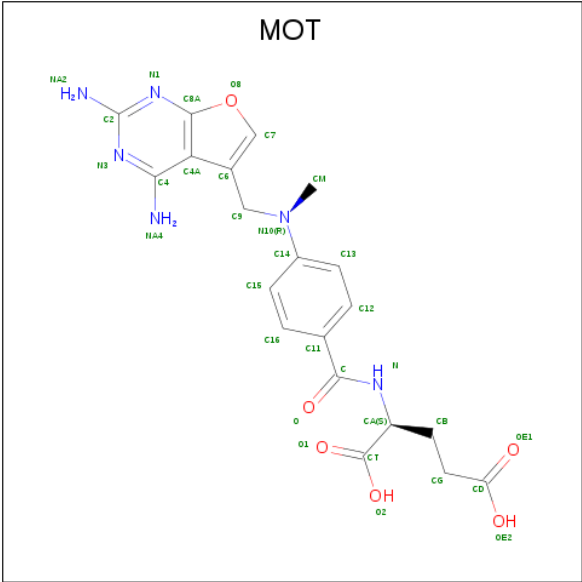
Mol	Chain	Residues	Atoms					ZeroOcc	AltConf	Trace
			Total	C	N	O	S			
1	A	206	1686	1086	288	305	7	0	0	0

- Molecule 2 is NADPH DIHYDRO-NICOTINAMIDE-ADENINE-DINUCLEOTIDE PHOSPHATE (three-letter code: NDP) (formula:  $C_{21}H_{30}N_7O_{17}P_3$ ).



Mol	Chain	Residues	Atoms					ZeroOcc	AltConf
			Total	C	N	O	P		
2	A	1	48	21	7	17	3	0	0

- Molecule 3 is N-[4-[(2,4-DIAMINOFURO[2,3D]PYRIMIDIN-5-YL)METHYL]METHYLAMINO]-BENZOYL-L-GLUTAMATE (three-letter code: MOT) (formula:  $C_{20}H_{22}N_6O_6$ ).



Mol	Chain	Residues	Atoms				ZeroOcc	AltConf
3	A	1	Total	C	N	O	0	0
			32	20	6	6		

- Molecule 4 is water.

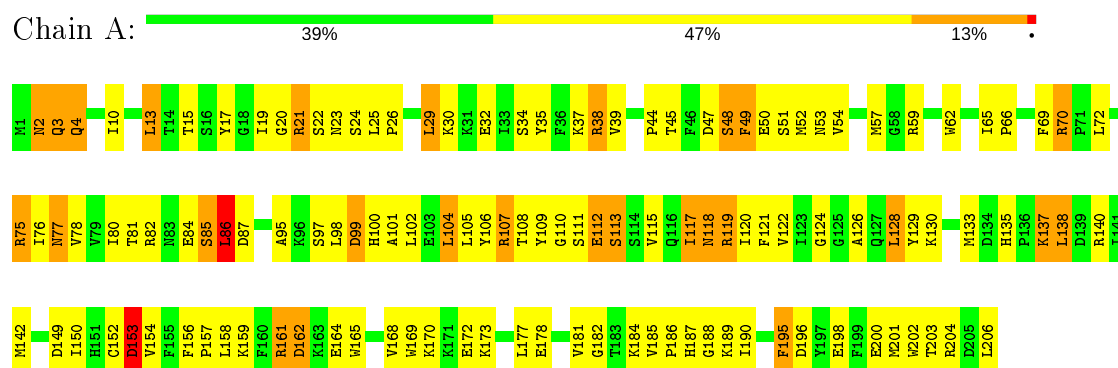
Mol	Chain	Residues	Atoms		ZeroOcc	AltConf
4	A	50	Total	O	0	0
			50	50		

### 3 Residue-property plots

These plots are drawn for all protein, RNA and DNA chains in the entry. The first graphic for a chain summarises the proportions of the various outlier classes displayed in the second graphic. The second graphic shows the sequence view annotated by issues in geometry. Residues are color-coded according to the number of geometric quality criteria for which they contain at least one outlier: green = 0, yellow = 1, orange = 2 and red = 3 or more. Stretches of 2 or more consecutive residues without any outlier are shown as a green connector. Residues present in the sample, but not in the model, are shown in grey.

Note EDS was not executed.

#### • Molecule 1: DIHYDROFOLATE REDUCTASE



## 4 Data and refinement statistics

Xtriage (Phenix) and EDS were not executed - this section is therefore incomplete.

Property	Value	Source
Space group	P 1 21 1	Depositor
Cell constants a, b, c, $\alpha$ , $\beta$ , $\gamma$	37.17Å 43.09Å 61.05Å 90.00° 94.85° 90.00°	Depositor
Resolution (Å)	8.00 – 2.30	Depositor
% Data completeness (in resolution range)	(Not available) (8.00-2.30)	Depositor
$R_{merge}$	0.07	Depositor
$R_{sym}$	(Not available)	Depositor
Refinement program	PROFFT	Depositor
R, $R_{free}$	0.181 , (Not available)	Depositor
Estimated twinning fraction	No twinning to report.	Xtriage
Total number of atoms	1816	wwPDB-VP
Average B, all atoms (Å <sup>2</sup> )	26.0	wwPDB-VP

## 5 Model quality

### 5.1 Standard geometry

Bond lengths and bond angles in the following residue types are not validated in this section: NDP, MOT

The Z score for a bond length (or angle) is the number of standard deviations the observed value is removed from the expected value. A bond length (or angle) with  $|Z| > 5$  is considered an outlier worth inspection. RMSZ is the root-mean-square of all Z scores of the bond lengths (or angles).

Mol	Chain	Bond lengths		Bond angles	
		RMSZ	$\# Z  > 5$	RMSZ	$\# Z  > 5$
1	A	0.76	0/1728	1.70	25/2330 (1.1%)

There are no bond length outliers.

All (25) bond angle outliers are listed below:

Mol	Chain	Res	Type	Atoms	Z	Observed(°)	Ideal(°)
1	A	75	ARG	NE-CZ-NH1	12.81	126.70	120.30
1	A	162	ASP	CB-CG-OD1	12.36	129.42	118.30
1	A	75	ARG	CD-NE-CZ	10.37	138.12	123.60
1	A	162	ASP	CB-CG-OD2	-8.81	110.37	118.30
1	A	59	ARG	NE-CZ-NH1	8.63	124.61	120.30
1	A	75	ARG	NE-CZ-NH2	-8.15	116.23	120.30
1	A	21	ARG	CD-NE-CZ	7.71	134.39	123.60
1	A	119	ARG	NE-CZ-NH1	7.48	124.04	120.30
1	A	21	ARG	NE-CZ-NH1	7.43	124.02	120.30
1	A	203	THR	N-CA-CB	7.41	124.38	110.30
1	A	38	ARG	CD-NE-CZ	6.70	132.97	123.60
1	A	153	ASP	CB-CG-OD1	6.58	124.23	118.30
1	A	161	ARG	NE-CZ-NH2	6.47	123.54	120.30
1	A	198	GLU	OE1-CD-OE2	6.16	130.69	123.30
1	A	107	ARG	NE-CZ-NH1	-6.15	117.22	120.30
1	A	140	ARG	NE-CZ-NH1	5.99	123.29	120.30
1	A	118	ASN	CA-CB-CG	5.70	125.94	113.40
1	A	149	ASP	CB-CG-OD1	5.48	123.23	118.30
1	A	59	ARG	CD-NE-CZ	5.46	131.24	123.60
1	A	87	ASP	CB-CG-OD1	5.31	123.08	118.30
1	A	37	LYS	CA-CB-CG	5.17	124.78	113.40
1	A	86	LEU	CA-CB-CG	5.13	127.10	115.30
1	A	99	ASP	CB-CG-OD2	-5.09	113.72	118.30
1	A	107	ARG	NE-CZ-NH2	5.04	122.82	120.30

*Continued on next page...*

*Continued from previous page...*

Mol	Chain	Res	Type	Atoms	Z	Observed(°)	Ideal(°)
1	A	138	LEU	CB-CA-C	5.03	119.75	110.20

There are no chirality outliers.

There are no planarity outliers.

## 5.2 Too-close contacts ⓘ

In the following table, the Non-H and H(model) columns list the number of non-hydrogen atoms and hydrogen atoms in the chain respectively. The H(added) column lists the number of hydrogen atoms added and optimized by MolProbity. The Clashes column lists the number of clashes within the asymmetric unit, whereas Symm-Clashes lists symmetry related clashes.

Mol	Chain	Non-H	H(model)	H(added)	Clashes	Symm-Clashes
1	A	1686	0	1693	127	0
2	A	48	0	26	8	0
3	A	32	0	20	8	0
4	A	50	0	0	4	0
All	All	1816	0	1739	133	0

The all-atom clashscore is defined as the number of clashes found per 1000 atoms (including hydrogen atoms). The all-atom clashscore for this structure is 38.

All (133) close contacts within the same asymmetric unit are listed below, sorted by their clash magnitude.

Atom-1	Atom-2	Interatomic distance (Å)	Clash overlap (Å)
2:A:207:NDP:H42N	3:A:208:MOT:H91	1.39	1.00
1:A:150:ILE:HD11	1:A:195:PHE:CE1	1.99	0.98
1:A:122:VAL:HG13	1:A:128:LEU:HD13	1.55	0.89
1:A:178:GLU:HG2	1:A:184:LYS:HA	1.54	0.86
1:A:22:SER:N	1:A:153:ASP:OD1	2.10	0.85
1:A:22:SER:H	1:A:153:ASP:CG	1.81	0.84
1:A:122:VAL:HG13	1:A:128:LEU:CD1	2.09	0.82
1:A:130:LYS:HG3	1:A:157:PRO:HB3	1.62	0.82
1:A:3:GLN:HB3	1:A:137:LYS:HD3	1.62	0.81
1:A:3:GLN:HB3	1:A:137:LYS:CD	2.11	0.80
1:A:54:VAL:HB	1:A:120:ILE:HD13	1.65	0.79
1:A:104:LEU:HD12	1:A:108:THR:HG1	1.49	0.78
1:A:104:LEU:HD12	1:A:108:THR:OG1	1.84	0.77
1:A:29:LEU:HB3	1:A:32:GLU:HB3	1.67	0.76
1:A:85:SER:HB2	1:A:86:LEU:HD13	1.69	0.74

*Continued on next page...*



*Continued from previous page...*

Atom-1	Atom-2	Interatomic distance (Å)	Clash overlap (Å)
1:A:81:THR:HG23	1:A:84:GLU:HB3	1.69	0.73
1:A:54:VAL:HG23	1:A:117:ILE:HG21	1.71	0.72
1:A:54:VAL:HG23	1:A:117:ILE:CG2	2.19	0.72
1:A:69:PHE:CG	3:A:208:MOT:HB2	2.25	0.71
1:A:4:GLN:HB3	4:A:257:HOH:O	1.91	0.70
1:A:13:LEU:HD12	1:A:17:TYR:HA	1.73	0.70
1:A:122:VAL:CG1	1:A:128:LEU:HD13	2.22	0.69
1:A:137:LYS:HE3	1:A:137:LYS:HA	1.73	0.69
1:A:150:ILE:HD11	1:A:195:PHE:HE1	1.51	0.69
1:A:104:LEU:HD12	1:A:104:LEU:O	1.93	0.69
1:A:161:ARG:HD3	4:A:233:HOH:O	1.94	0.67
2:A:207:NDP:H52A	2:A:207:NDP:H8A	1.75	0.67
1:A:177:LEU:C	1:A:177:LEU:HD23	2.16	0.65
1:A:78:VAL:HG21	1:A:105:LEU:HD21	1.79	0.64
1:A:173:LYS:HG3	4:A:229:HOH:O	1.97	0.64
1:A:29:LEU:HB3	1:A:32:GLU:CB	2.30	0.60
1:A:200:GLU:OE1	1:A:202:TRP:NE1	2.34	0.60
1:A:52:MET:O	1:A:117:ILE:HA	2.02	0.60
1:A:66:PRO:HB2	1:A:69:PHE:CD2	2.38	0.59
1:A:164:GLU:HG3	1:A:165:TRP:CD1	2.37	0.59
1:A:135:HIS:HD2	1:A:137:LYS:H	1.51	0.59
1:A:45:THR:HA	1:A:48:SER:OG	2.03	0.59
1:A:54:VAL:CG2	1:A:117:ILE:HG21	2.33	0.58
1:A:186:PRO:HB2	1:A:190:ILE:HD11	1.86	0.58
1:A:126:ALA:HB2	1:A:154:VAL:CG2	2.33	0.58
1:A:150:ILE:HD11	1:A:195:PHE:CD1	2.40	0.56
1:A:77:ASN:N	1:A:77:ASN:HD22	2.03	0.56
1:A:104:LEU:CD1	1:A:108:THR:OG1	2.53	0.56
1:A:19:ILE:HG13	1:A:154:VAL:HG13	1.87	0.56
1:A:23:ASN:HA	2:A:207:NDP:H3D	1.89	0.55
1:A:110:GLY:O	1:A:112:GLU:N	2.40	0.55
2:A:207:NDP:H42N	3:A:208:MOT:C9	2.27	0.54
1:A:54:VAL:HG22	1:A:76:ILE:HB	1.88	0.54
1:A:54:VAL:HB	1:A:120:ILE:CD1	2.37	0.53
1:A:137:LYS:HE3	1:A:137:LYS:CA	2.34	0.53
1:A:3:GLN:HG2	1:A:137:LYS:HG3	1.92	0.52
1:A:178:GLU:OE2	1:A:184:LYS:HG3	2.09	0.52
1:A:80:ILE:O	2:A:207:NDP:H1B	2.10	0.52
1:A:80:ILE:CD1	1:A:101:ALA:HB2	2.40	0.51
1:A:169:TRP:CH2	1:A:204:ARG:HG2	2.45	0.51
1:A:97:SER:OG	1:A:100:HIS:HD2	1.94	0.51

*Continued on next page...*

*Continued from previous page...*

Atom-1	Atom-2	Interatomic distance (Å)	Clash overlap (Å)
1:A:126:ALA:HB2	1:A:154:VAL:HG21	1.91	0.51
1:A:10:ILE:HA	1:A:142:MET:O	2.11	0.51
1:A:24:SER:O	1:A:26:PRO:HD3	2.10	0.51
1:A:35:TYR:O	1:A:38:ARG:HB3	2.11	0.50
1:A:133:MET:HE3	1:A:158:LEU:HD22	1.93	0.50
1:A:50:GLU:HG2	1:A:51:SER:N	2.27	0.50
1:A:19:ILE:O	2:A:207:NDP:H2N	2.12	0.50
1:A:82:ARG:HG2	2:A:207:NDP:H2A	1.93	0.50
1:A:104:LEU:HD12	1:A:104:LEU:C	2.32	0.50
3:A:208:MOT:O	3:A:208:MOT:CB	2.55	0.50
1:A:35:TYR:O	1:A:39:VAL:HG23	2.11	0.50
1:A:47:ASP:C	1:A:49:PHE:H	2.15	0.49
1:A:78:VAL:CG2	1:A:105:LEU:HD21	2.42	0.49
1:A:84:GLU:CD	1:A:84:GLU:O	2.51	0.49
1:A:21:ARG:HD2	1:A:153:ASP:OD2	2.12	0.49
1:A:72:LEU:HB3	1:A:75:ARG:CZ	2.43	0.49
1:A:66:PRO:O	1:A:69:PHE:N	2.45	0.49
1:A:98:LEU:O	1:A:102:LEU:HG	2.13	0.49
1:A:4:GLN:HG2	1:A:106:TYR:CE2	2.47	0.48
1:A:54:VAL:O	1:A:121:PHE:N	2.41	0.48
1:A:170:LYS:O	1:A:202:TRP:HA	2.13	0.48
1:A:187:HIS:CD2	1:A:188:GLY:H	2.31	0.48
1:A:65:ILE:HG22	1:A:70:ARG:HG3	1.95	0.48
1:A:69:PHE:CB	3:A:208:MOT:HB2	2.43	0.48
1:A:172:GLU:HG3	1:A:201:MET:HE3	1.95	0.48
1:A:17:TYR:CE2	1:A:159:LYS:HA	2.49	0.47
1:A:133:MET:CE	1:A:158:LEU:HD22	2.44	0.47
1:A:47:ASP:C	1:A:49:PHE:N	2.68	0.47
1:A:105:LEU:O	1:A:109:TYR:N	2.47	0.47
1:A:65:ILE:CG2	1:A:70:ARG:HG3	2.45	0.47
1:A:54:VAL:N	1:A:119:ARG:O	2.42	0.46
1:A:47:ASP:O	1:A:49:PHE:N	2.49	0.46
1:A:85:SER:CB	1:A:86:LEU:HD13	2.44	0.46
1:A:22:SER:N	1:A:153:ASP:OD2	2.48	0.46
1:A:159:LYS:HD3	1:A:162:ASP:OD2	2.16	0.46
1:A:3:GLN:HB3	1:A:137:LYS:HD2	1.95	0.46
1:A:95:ALA:HB2	1:A:101:ALA:HA	1.99	0.45
1:A:142:MET:SD	1:A:201:MET:HG3	2.57	0.45
1:A:54:VAL:HG23	1:A:117:ILE:HG23	1.96	0.45
1:A:53:ASN:OD1	1:A:119:ARG:HB2	2.17	0.45
1:A:185:VAL:CG1	1:A:186:PRO:HD2	2.47	0.44

*Continued on next page...*

*Continued from previous page...*

Atom-1	Atom-2	Interatomic distance (Å)	Clash overlap (Å)
1:A:4:GLN:HG2	1:A:106:TYR:CZ	2.53	0.44
1:A:77:ASN:ND2	1:A:77:ASN:N	2.65	0.44
1:A:86:LEU:N	1:A:86:LEU:HD13	2.32	0.44
1:A:168:VAL:HB	1:A:169:TRP:H	1.58	0.44
1:A:177:LEU:HD23	1:A:178:GLU:N	2.32	0.44
1:A:113:SER:C	1:A:115:VAL:H	2.20	0.44
1:A:34:SER:O	1:A:38:ARG:HB2	2.18	0.44
1:A:44:PRO:HD3	4:A:235:HOH:O	2.16	0.44
1:A:85:SER:C	1:A:86:LEU:HD13	2.38	0.44
1:A:126:ALA:HB2	1:A:154:VAL:HG22	1.99	0.44
1:A:69:PHE:HB3	3:A:208:MOT:HB2	1.99	0.44
3:A:208:MOT:H15	3:A:208:MOT:HM1	1.78	0.43
1:A:156:PHE:HA	1:A:157:PRO:HD2	1.70	0.43
1:A:187:HIS:HD2	1:A:188:GLY:H	1.66	0.43
1:A:32:GLU:O	1:A:35:TYR:HB3	2.18	0.43
1:A:69:PHE:HB3	3:A:208:MOT:HA	2.00	0.43
2:A:207:NDP:C8A	2:A:207:NDP:H52A	2.47	0.43
1:A:185:VAL:HG12	1:A:186:PRO:HD2	2.01	0.43
1:A:62:TRP:CE2	1:A:70:ARG:HD3	2.53	0.43
1:A:129:TYR:O	1:A:133:MET:HG2	2.20	0.42
1:A:95:ALA:CB	1:A:101:ALA:HA	2.49	0.42
1:A:29:LEU:HD11	1:A:195:PHE:HD2	1.85	0.42
1:A:99:ASP:OD1	1:A:135:HIS:HE1	2.02	0.42
1:A:150:ILE:CD1	1:A:195:PHE:CE1	2.89	0.42
1:A:107:ARG:HD3	1:A:107:ARG:HH11	1.61	0.42
1:A:57:MET:HA	1:A:124:GLY:O	2.19	0.42
1:A:126:ALA:CB	1:A:154:VAL:HG21	2.50	0.42
1:A:38:ARG:HE	1:A:38:ARG:HB2	1.13	0.42
1:A:126:ALA:CB	1:A:154:VAL:CG2	2.97	0.42
1:A:20:GLY:O	1:A:152:CYS:HB3	2.20	0.41
1:A:82:ARG:NH1	1:A:82:ARG:HG3	2.34	0.41
1:A:25:LEU:HA	1:A:25:LEU:HD23	1.66	0.41
1:A:181:VAL:O	1:A:181:VAL:CG1	2.69	0.41
1:A:110:GLY:O	1:A:113:SER:N	2.42	0.40
1:A:189:LYS:HD2	1:A:196:ASP:OD1	2.22	0.40
1:A:156:PHE:CD1	1:A:158:LEU:O	2.75	0.40

There are no symmetry-related clashes.

## 5.3 Torsion angles [i](#)

### 5.3.1 Protein backbone [i](#)

In the following table, the Percentiles column shows the percent Ramachandran outliers of the chain as a percentile score with respect to all X-ray entries followed by that with respect to entries of similar resolution.

The Analysed column shows the number of residues for which the backbone conformation was analysed, and the total number of residues.

Mol	Chain	Analysed	Favoured	Allowed	Outliers	Percentiles
1	A	204/206 (99%)	183 (90%)	17 (8%)	4 (2%)	<b>7</b> <b>6</b>

All (4) Ramachandran outliers are listed below:

Mol	Chain	Res	Type
1	A	111	SER
1	A	2	ASN
1	A	48	SER
1	A	182	GLY

### 5.3.2 Protein sidechains [i](#)

In the following table, the Percentiles column shows the percent sidechain outliers of the chain as a percentile score with respect to all X-ray entries followed by that with respect to entries of similar resolution.

The Analysed column shows the number of residues for which the sidechain conformation was analysed, and the total number of residues.

Mol	Chain	Analysed	Rotameric	Outliers	Percentiles
1	A	187/187 (100%)	164 (88%)	23 (12%)	<b>4</b> <b>5</b>

All (23) residues with a non-rotameric sidechain are listed below:

Mol	Chain	Res	Type
1	A	2	ASN
1	A	3	GLN
1	A	4	GLN
1	A	13	LEU
1	A	15	THR
1	A	29	LEU
1	A	30	LYS

*Continued on next page...*

*Continued from previous page...*

Mol	Chain	Res	Type
1	A	49	PHE
1	A	70	ARG
1	A	77	ASN
1	A	85	SER
1	A	86	LEU
1	A	104	LEU
1	A	112	GLU
1	A	113	SER
1	A	117	ILE
1	A	118	ASN
1	A	128	LEU
1	A	137	LYS
1	A	138	LEU
1	A	153	ASP
1	A	195	PHE
1	A	206	LEU

Some sidechains can be flipped to improve hydrogen bonding and reduce clashes. All (3) such sidechains are listed below:

Mol	Chain	Res	Type
1	A	100	HIS
1	A	135	HIS
1	A	187	HIS

### 5.3.3 RNA [i](#)

There are no RNA molecules in this entry.

## 5.4 Non-standard residues in protein, DNA, RNA chains [i](#)

There are no non-standard protein/DNA/RNA residues in this entry.

## 5.5 Carbohydrates [i](#)

There are no carbohydrates in this entry.

## 5.6 Ligand geometry [i](#)

2 ligands are modelled in this entry.

In the following table, the Counts columns list the number of bonds (or angles) for which Mogul statistics could be retrieved, the number of bonds (or angles) that are observed in the model and the number of bonds (or angles) that are defined in the Chemical Component Dictionary. The Link column lists molecule types, if any, to which the group is linked. The Z score for a bond length (or angle) is the number of standard deviations the observed value is removed from the expected value. A bond length (or angle) with  $|Z| > 2$  is considered an outlier worth inspection. RMSZ is the root-mean-square of all Z scores of the bond lengths (or angles).

Mol	Type	Chain	Res	Link	Bond lengths			Bond angles		
					Counts	RMSZ	$\# Z  > 2$	Counts	RMSZ	$\# Z  > 2$
3	MOT	A	208	-	25,34,34	2.47	11 (44%)	28,48,48	2.98	10 (35%)
2	NDP	A	207	-	45,52,52	2.48	15 (33%)	53,80,80	2.06	22 (41%)

In the following table, the Chirals column lists the number of chiral outliers, the number of chiral centers analysed, the number of these observed in the model and the number defined in the Chemical Component Dictionary. Similar counts are reported in the Torsion and Rings columns. '-' means no outliers of that kind were identified.

Mol	Type	Chain	Res	Link	Chirals	Torsions	Rings
3	MOT	A	208	-	-	6/18/25/25	0/3/3/3
2	NDP	A	207	-	-	5/30/77/77	0/5/5/5

All (26) bond length outliers are listed below:

Mol	Chain	Res	Type	Atoms	Z	Observed(Å)	Ideal(Å)
2	A	207	NDP	O4B-C4B	-8.35	1.26	1.45
3	A	208	MOT	C11-C	-7.39	1.34	1.50
2	A	207	NDP	P2B-O2B	7.38	1.73	1.59
2	A	207	NDP	C3B-C4B	4.12	1.63	1.53
3	A	208	MOT	C4A-C8A	-3.83	1.33	1.42
2	A	207	NDP	C5A-C4A	-3.60	1.31	1.40
2	A	207	NDP	C6A-C5A	3.59	1.56	1.43
3	A	208	MOT	C2-N3	-3.47	1.29	1.35
2	A	207	NDP	O3B-C3B	3.44	1.51	1.43
2	A	207	NDP	PN-O5D	-3.33	1.45	1.59
3	A	208	MOT	CA-N	3.22	1.50	1.46
2	A	207	NDP	C4N-C3N	3.17	1.56	1.49
3	A	208	MOT	C6-C4A	3.12	1.46	1.41
3	A	208	MOT	C4-N3	-3.09	1.28	1.33
2	A	207	NDP	C1D-N1N	2.77	1.54	1.46
2	A	207	NDP	PA-O5B	2.60	1.69	1.59
2	A	207	NDP	PN-O1N	-2.56	1.41	1.50
2	A	207	NDP	P2B-O2X	-2.47	1.45	1.54
3	A	208	MOT	C13-C12	-2.46	1.34	1.38

*Continued on next page...*

*Continued from previous page...*

Mol	Chain	Res	Type	Atoms	Z	Observed(Å)	Ideal(Å)
3	A	208	MOT	C16-C11	-2.33	1.35	1.39
3	A	208	MOT	C13-C14	-2.31	1.34	1.39
2	A	207	NDP	O4B-C1B	2.22	1.44	1.41
3	A	208	MOT	C16-C15	-2.22	1.34	1.38
3	A	208	MOT	C15-C14	-2.16	1.35	1.39
2	A	207	NDP	O4D-C4D	2.07	1.49	1.45
2	A	207	NDP	O2D-C2D	-2.07	1.38	1.43

All (32) bond angle outliers are listed below:

Mol	Chain	Res	Type	Atoms	Z	Observed(°)	Ideal(°)
3	A	208	MOT	CA-N-C	-11.66	107.31	122.34
3	A	208	MOT	C6-C9-N10	5.27	122.32	114.44
2	A	207	NDP	O4B-C1B-C2B	-4.87	98.15	106.59
2	A	207	NDP	O3X-P2B-O2X	4.46	124.67	107.64
3	A	208	MOT	O-C-N	-4.11	114.88	122.45
2	A	207	NDP	O3B-C3B-C4B	-3.91	99.74	111.05
2	A	207	NDP	O7N-C7N-C3N	-3.81	113.71	120.90
2	A	207	NDP	C3N-C2N-N1N	-3.74	117.75	123.10
2	A	207	NDP	C2B-C3B-C4B	-3.51	94.37	101.99
2	A	207	NDP	C3B-C2B-C1B	-3.16	96.96	102.89
2	A	207	NDP	O5D-C5D-C4D	-3.09	98.35	108.99
2	A	207	NDP	N3A-C2A-N1A	3.01	133.38	128.68
2	A	207	NDP	C3N-C7N-N7N	2.95	122.91	117.67
2	A	207	NDP	C1D-N1N-C6N	-2.69	115.03	120.83
3	A	208	MOT	C4A-C4-N3	-2.67	115.77	122.73
2	A	207	NDP	C2A-N1A-C6A	-2.51	114.46	118.75
3	A	208	MOT	C2-N1-C8A	-2.48	112.52	115.36
3	A	208	MOT	C2-N3-C4	2.44	123.68	116.72
3	A	208	MOT	N1-C2-N3	-2.41	124.01	127.22
3	A	208	MOT	CG-CB-CA	2.36	117.82	113.04
2	A	207	NDP	N6A-C6A-N1A	2.35	123.45	118.57
2	A	207	NDP	C5B-C4B-C3B	-2.34	106.43	115.18
2	A	207	NDP	O5B-C5B-C4B	-2.31	101.03	108.99
2	A	207	NDP	O2B-P2B-O1X	-2.27	100.61	109.39
2	A	207	NDP	C2D-C3D-C4D	-2.27	98.23	102.64
2	A	207	NDP	O2A-PA-O1A	2.17	122.95	112.24
3	A	208	MOT	NA2-C2-N3	2.16	120.61	117.25
2	A	207	NDP	O4D-C1D-N1N	2.16	112.27	108.06
3	A	208	MOT	C13-C14-N10	2.15	124.71	121.62
2	A	207	NDP	C4A-C5A-N7A	2.13	111.62	109.40
2	A	207	NDP	O5B-PA-O1A	-2.10	100.84	109.07

*Continued on next page...*

*Continued from previous page...*

Mol	Chain	Res	Type	Atoms	Z	Observed(°)	Ideal(°)
2	A	207	NDP	O5D-PN-O1N	2.03	117.00	109.07

There are no chirality outliers.

All (11) torsion outliers are listed below:

Mol	Chain	Res	Type	Atoms
3	A	208	MOT	CT-CA-CB-CG
3	A	208	MOT	CA-CB-CG-CD
3	A	208	MOT	N-CA-CB-CG
2	A	207	NDP	PN-O3-PA-O1A
2	A	207	NDP	PN-O3-PA-O2A
3	A	208	MOT	CT-CA-N-C
2	A	207	NDP	C2D-C1D-N1N-C2N
2	A	207	NDP	O4D-C1D-N1N-C2N
3	A	208	MOT	CB-CA-N-C
3	A	208	MOT	C6-C9-N10-C14
2	A	207	NDP	C2N-C3N-C7N-N7N

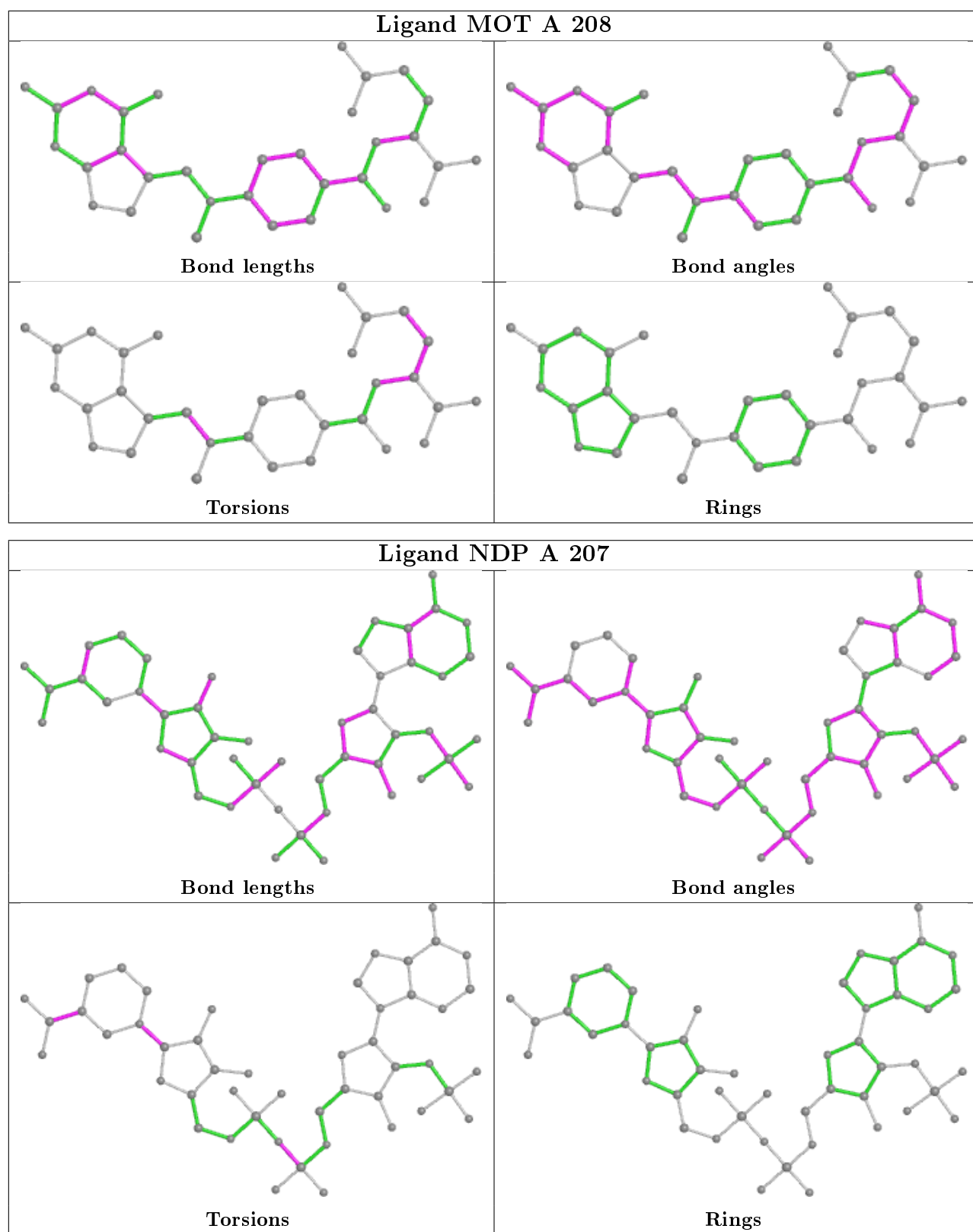
There are no ring outliers.

2 monomers are involved in 14 short contacts:

Mol	Chain	Res	Type	Clashes	Symm-Clashes
3	A	208	MOT	8	0
2	A	207	NDP	8	0

The following is a two-dimensional graphical depiction of Mogul quality analysis of bond lengths, bond angles, torsion angles, and ring geometry for all instances of the Ligand of Interest. In addition, ligands with molecular weight > 250 and outliers as shown on the validation Tables will also be included. For torsion angles, if less than 5% of the Mogul distribution of torsion angles is within 10 degrees of the torsion angle in question, then that torsion angle is considered an outlier. Any bond that is central to one or more torsion angles identified as an outlier by Mogul will be highlighted in the graph. For rings, the root-mean-square deviation (RMSD) between the ring in question and similar rings identified by Mogul is calculated over all ring torsion angles. If the average RMSD is greater than 60 degrees and the minimal RMSD between the ring in question and any Mogul-identified rings is also greater than 60 degrees, then that ring is considered an outlier. The outliers are highlighted in purple. The color gray indicates Mogul did not find sufficient equivalents in the CSD to analyse the geometry.





## 5.7 Other polymers [i](#)

There are no such residues in this entry.

## 5.8 Polymer linkage issues ⓘ

There are no chain breaks in this entry.

## 6 Fit of model and data ⓘ

### 6.1 Protein, DNA and RNA chains ⓘ

EDS was not executed - this section is therefore empty.

### 6.2 Non-standard residues in protein, DNA, RNA chains ⓘ

EDS was not executed - this section is therefore empty.

### 6.3 Carbohydrates ⓘ

EDS was not executed - this section is therefore empty.

### 6.4 Ligands ⓘ

EDS was not executed - this section is therefore empty.

### 6.5 Other polymers ⓘ

EDS was not executed - this section is therefore empty.