



Full wwPDB X-ray Structure Validation Report ⓘ

May 25, 2020 – 12:18 pm BST

PDB ID : 6DAG
Title : Human CYP3A4 bound to an inhibitor
Authors : Sevrioukova, I.F.
Deposited on : 2018-05-01
Resolution : 2.80 Å(reported)

This is a Full wwPDB X-ray Structure Validation Report for a publicly released PDB entry.

We welcome your comments at validation@mail.wwpdb.org

A user guide is available at

<https://www.wwpdb.org/validation/2017/XrayValidationReportHelp>

with specific help available everywhere you see the ⓘ symbol.

The following versions of software and data (see [references ⓘ](#)) were used in the production of this report:

MolProbity : 4.02b-467
Mogul : 1.8.5 (274361), CSD as541be (2020)
Xtriage (Phenix) : 1.13
EDS : 2.11
buster-report : 1.1.7 (2018)
Percentile statistics : 20191225.v01 (using entries in the PDB archive December 25th 2019)
Refmac : 5.8.0158
CCP4 : 7.0.044 (Gargrove)
Ideal geometry (proteins) : Engh & Huber (2001)
Ideal geometry (DNA, RNA) : Parkinson et al. (1996)
Validation Pipeline (wwPDB-VP) : 2.11

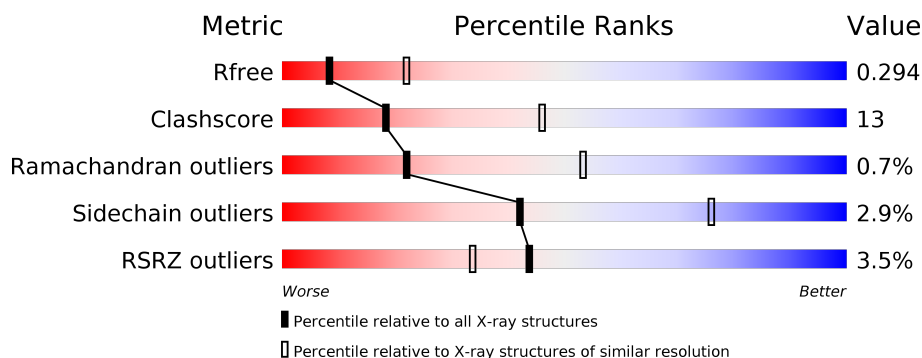
1 Overall quality at a glance

The following experimental techniques were used to determine the structure:

X-RAY DIFFRACTION

The reported resolution of this entry is 2.80 Å.

Percentile scores (ranging between 0-100) for global validation metrics of the entry are shown in the following graphic. The table shows the number of entries on which the scores are based.



Metric	Whole archive (#Entries)	Similar resolution (#Entries, resolution range(Å))
R_{free}	130704	3140 (2.80-2.80)
Clashscore	141614	3569 (2.80-2.80)
Ramachandran outliers	138981	3498 (2.80-2.80)
Sidechain outliers	138945	3500 (2.80-2.80)
RSRZ outliers	127900	3078 (2.80-2.80)

The table below summarises the geometric issues observed across the polymeric chains and their fit to the electron density. The red, orange, yellow and green segments on the lower bar indicate the fraction of residues that contain outliers for ≥ 3 , 2, 1 and 0 types of geometric quality criteria respectively. A grey segment represents the fraction of residues that are not modelled. The numeric value for each fraction is indicated below the corresponding segment, with a dot representing fractions $\leq 5\%$. The upper red bar (where present) indicates the fraction of residues that have poor fit to the electron density. The numeric value is given above the bar.

Mol	Chain	Length	Quality of chain
1	A	487	

2 Entry composition [i](#)

There are 3 unique types of molecules in this entry. The entry contains 3724 atoms, of which 0 are hydrogens and 0 are deuteriums.

In the tables below, the ZeroOcc column contains the number of atoms modelled with zero occupancy, the AltConf column contains the number of residues with at least one atom in alternate conformation and the Trace column contains the number of residues modelled with at most 2 atoms.

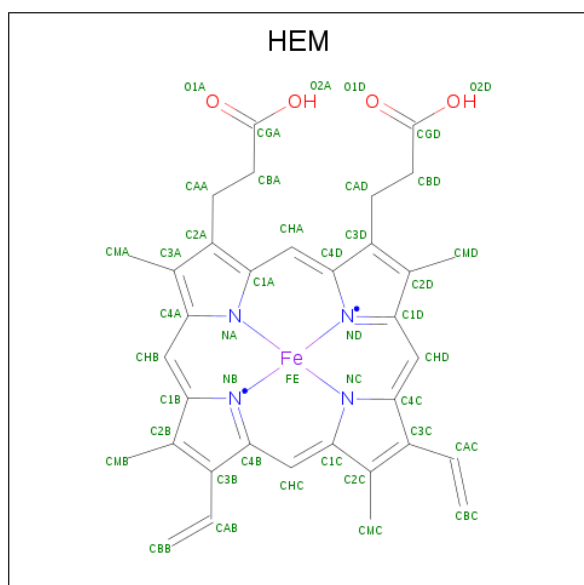
- Molecule 1 is a protein called Cytochrome P450 3A4.

Mol	Chain	Residues	Atoms					ZeroOcc	AltConf	Trace
			Total	C	N	O	S			
1	A	451	3644	2376	596	646	26	0	6	0

There are 6 discrepancies between the modelled and reference sequences:

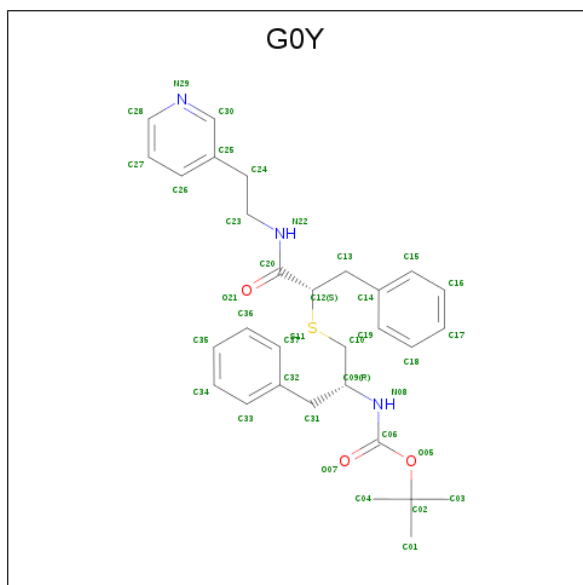
Chain	Residue	Modelled	Actual	Comment	Reference
A	1	MET	-	initiating methionine	UNP P08684
A	2	ALA	-	expression tag	UNP P08684
A	504	HIS	-	expression tag	UNP P08684
A	505	HIS	-	expression tag	UNP P08684
A	506	HIS	-	expression tag	UNP P08684
A	507	HIS	-	expression tag	UNP P08684

- Molecule 2 is PROTOPORPHYRIN IX CONTAINING FE (three-letter code: HEM) (formula: $C_{34}H_{32}FeN_4O_4$).



Mol	Chain	Residues	Atoms					ZeroOcc	AltConf
2	A	1	Total	C	Fe	N	O	0	0
			43	34	1	4	4		

- Molecule 3 is tert-butyl [(2R)-1-{[(2S)-1-oxo-3-phenyl-1-{[2-(pyridin-3-yl)ethyl]amino}propan-2-yl]sulfanyl}-3-phenylpropan-2-yl]carbamate (three-letter code: G0Y) (formula: C₃₀H₃₇N₃O₃S).

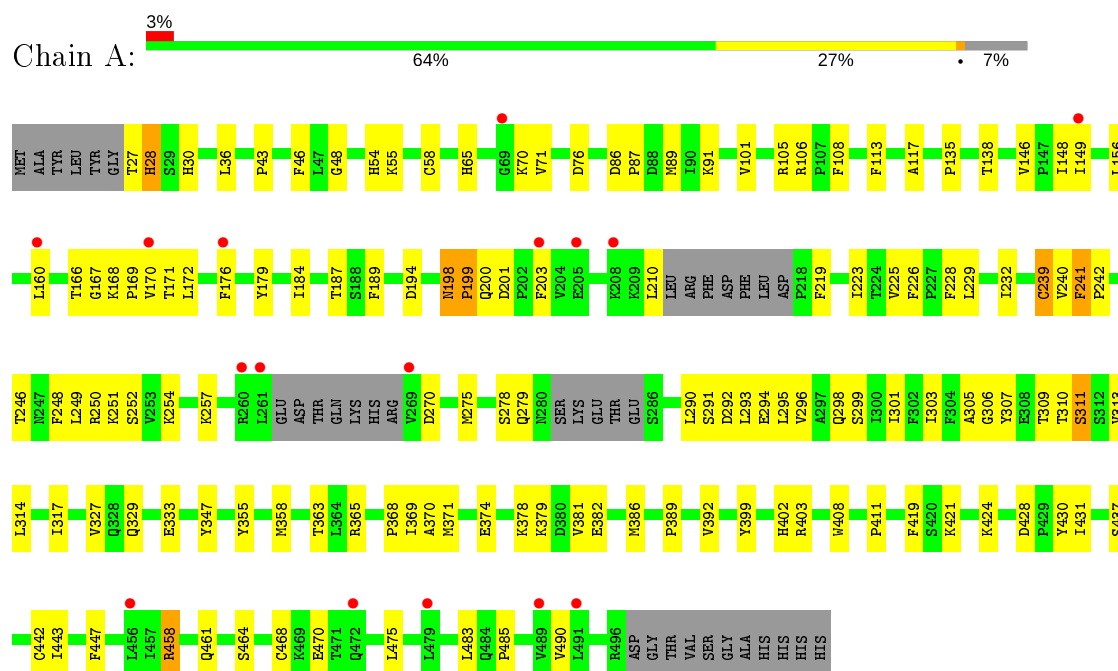


Mol	Chain	Residues	Atoms					ZeroOcc	AltConf
3	A	1	Total	C	N	O	S	0	0
			37	30	3	3	1		

3 Residue-property plots [i](#)

These plots are drawn for all protein, RNA and DNA chains in the entry. The first graphic for a chain summarises the proportions of the various outlier classes displayed in the second graphic. The second graphic shows the sequence view annotated by issues in geometry and electron density. Residues are color-coded according to the number of geometric quality criteria for which they contain at least one outlier: green = 0, yellow = 1, orange = 2 and red = 3 or more. A red dot above a residue indicates a poor fit to the electron density ($RSRZ > 2$). Stretches of 2 or more consecutive residues without any outlier are shown as a green connector. Residues present in the sample, but not in the model, are shown in grey.

• Molecule 1: Cytochrome P450 3A4



4 Data and refinement statistics

Property	Value	Source
Space group	I 2 2 2	Depositor
Cell constants a, b, c, α , β , γ	76.79Å 102.35Å 125.56Å 90.00° 90.00° 90.00°	Depositor
Resolution (Å)	51.17 – 2.80 51.18 – 2.80	Depositor EDS
% Data completeness (in resolution range)	87.7 (51.17-2.80) 87.7 (51.18-2.80)	Depositor EDS
R_{merge}	0.10	Depositor
R_{sym}	(Not available)	Depositor
$\langle I/\sigma(I) \rangle$ ¹	0.97 (at 2.81Å)	Xtriage
Refinement program	PHENIX (1.11.1 _2575)	Depositor
R, R_{free}	0.208 , 0.292 0.212 , 0.294	Depositor DCC
R_{free} test set	572 reflections (5.21%)	wwPDB-VP
Wilson B-factor (Å ²)	106.4	Xtriage
Anisotropy	0.111	Xtriage
Bulk solvent k_{sol} (e/Å ³), B_{sol} (Å ²)	0.29 , 92.7	EDS
L-test for twinning ²	$\langle L \rangle = 0.52$, $\langle L^2 \rangle = 0.36$	Xtriage
Estimated twinning fraction	No twinning to report.	Xtriage
F_o, F_c correlation	0.96	EDS
Total number of atoms	3724	wwPDB-VP
Average B, all atoms (Å ²)	130.0	wwPDB-VP

Xtriage's analysis on translational NCS is as follows: *The largest off-origin peak in the Patterson function is 4.77% of the height of the origin peak. No significant pseudotranslation is detected.*

¹Intensities estimated from amplitudes.

²Theoretical values of $\langle |L| \rangle$, $\langle L^2 \rangle$ for acentric reflections are 0.5, 0.333 respectively for untwinned datasets, and 0.375, 0.2 for perfectly twinned datasets.

5 Model quality [i](#)

5.1 Standard geometry [i](#)

Bond lengths and bond angles in the following residue types are not validated in this section: HEM, G0Y

The Z score for a bond length (or angle) is the number of standard deviations the observed value is removed from the expected value. A bond length (or angle) with $|Z| > 5$ is considered an outlier worth inspection. RMSZ is the root-mean-square of all Z scores of the bond lengths (or angles).

Mol	Chain	Bond lengths		Bond angles	
		RMSZ	$\# Z > 5$	RMSZ	$\# Z > 5$
1	A	0.51	0/3749	0.68	0/5068

Chiral center outliers are detected by calculating the chiral volume of a chiral center and verifying if the center is modelled as a planar moiety or with the opposite hand. A planarity outlier is detected by checking planarity of atoms in a peptide group, atoms in a mainchain group or atoms of a sidechain that are expected to be planar.

Mol	Chain	#Chirality outliers	#Planarity outliers
1	A	0	1

There are no bond length outliers.

There are no bond angle outliers.

There are no chirality outliers.

All (1) planarity outliers are listed below:

Mol	Chain	Res	Type	Group
1	A	198	ASN	Peptide

5.2 Too-close contacts [i](#)

In the following table, the Non-H and H(model) columns list the number of non-hydrogen atoms and hydrogen atoms in the chain respectively. The H(added) column lists the number of hydrogen atoms added and optimized by MolProbity. The Clashes column lists the number of clashes within the asymmetric unit, whereas Symm-Clashes lists symmetry related clashes.

Mol	Chain	Non-H	H(model)	H(added)	Clashes	Symm-Clashes
1	A	3644	0	3758	99	0
2	A	43	0	30	4	0

Continued on next page...

Continued from previous page...

Mol	Chain	Non-H	H(model)	H(added)	Clashes	Symm-Clashes
3	A	37	0	0	8	0
All	All	3724	0	3788	100	0

The all-atom clashscore is defined as the number of clashes found per 1000 atoms (including hydrogen atoms). The all-atom clashscore for this structure is 13.

All (100) close contacts within the same asymmetric unit are listed below, sorted by their clash magnitude.

Atom-1	Atom-2	Interatomic distance (Å)	Clash overlap (Å)
1:A:105:ARG:HB2	3:A:602:G0Y:C03	1.97	0.94
1:A:87:PRO:HG3	1:A:431:ILE:HD11	1.60	0.84
1:A:108:PHE:CD2	3:A:602:G0Y:C01	2.61	0.84
1:A:458:ARG:NH2	1:A:461:GLN:OE1	2.24	0.70
1:A:248:PHE:HA	1:A:251:LYS:HE3	1.75	0.69
1:A:108:PHE:HD2	3:A:602:G0Y:C01	2.03	0.69
1:A:166:THR:O	1:A:168:LYS:N	2.23	0.69
1:A:442:CYS:HB2	2:A:601:HEM:NA	2.11	0.66
1:A:113:PHE:HB2	1:A:293:LEU:HD21	1.78	0.66
1:A:421:LYS:HA	1:A:424:LYS:HG2	1.77	0.65
1:A:184:ILE:HG21	1:A:303:ILE:HG23	1.78	0.65
1:A:70:LYS:HG3	1:A:71[A]:VAL:HG23	1.79	0.65
1:A:149:ILE:HD11	1:A:447:PHE:HE2	1.63	0.63
1:A:294:GLU:O	1:A:298:GLN:HG2	1.98	0.62
1:A:368:PRO:O	1:A:370:ALA:N	2.33	0.62
1:A:239:CYS:HB3	1:A:241:PHE:O	2.00	0.62
1:A:307:TYR:O	1:A:311:SER:HB3	1.99	0.61
1:A:194:ASP:HB3	1:A:198:ASN:HB2	1.83	0.61
1:A:117:ALA:HB1	1:A:301:ILE:HG13	1.82	0.61
1:A:241:PHE:N	1:A:241:PHE:CD1	2.68	0.61
1:A:241:PHE:H	1:A:241:PHE:HD1	1.48	0.60
1:A:241:PHE:O	1:A:242:PRO:C	2.39	0.60
1:A:184:ILE:HD11	1:A:306:GLY:C	2.23	0.59
1:A:146:VAL:HG21	1:A:347:TYR:HB2	1.84	0.58
1:A:305:ALA:HB1	2:A:601:HEM:C3C	2.38	0.57
1:A:229:LEU:HD22	1:A:232:ILE:HD12	1.86	0.57
1:A:229:LEU:O	1:A:232:ILE:HB	2.05	0.57
1:A:299:SER:O	1:A:303:ILE:HG13	2.04	0.57
1:A:36:LEU:HD11	1:A:389:PRO:HG3	1.86	0.56
1:A:226:PHE:HA	1:A:228:PHE:CE2	2.40	0.56
1:A:106:ARG:O	3:A:602:G0Y:C03	2.54	0.55
1:A:101:VAL:O	1:A:378:LYS:HG2	2.07	0.55

Continued on next page...

Continued from previous page...

Atom-1	Atom-2	Interatomic distance (Å)	Clash overlap (Å)
1:A:249:LEU:HA	1:A:252:SER:HB2	1.89	0.55
1:A:292:ASP:O	1:A:296:VAL:HG23	2.07	0.54
1:A:428:ASP:HB3	1:A:431:ILE:HG12	1.88	0.54
1:A:54:HIS:CD2	1:A:55:LYS:HG3	2.43	0.53
1:A:199:PRO:HB2	1:A:200:GLN:OE1	2.08	0.53
1:A:309:THR:O	1:A:313:VAL:HG23	2.09	0.52
1:A:470:GLU:N	1:A:470:GLU:OE1	2.43	0.52
1:A:327:VAL:HG13	1:A:355:TYR:OH	2.10	0.52
1:A:317:ILE:HG13	1:A:363:THR:HG21	1.92	0.51
1:A:250:ARG:HG3	1:A:296:VAL:HG11	1.92	0.51
1:A:279:GLN:NE2	1:A:290:LEU:O	2.44	0.51
1:A:378:LYS:HG3	1:A:379:LYS:HG2	1.93	0.50
1:A:442:CYS:HB2	2:A:601:HEM:C4A	2.47	0.50
1:A:101:VAL:HG21	1:A:381[A]:VAL:HG11	1.94	0.50
1:A:399:TYR:CE2	1:A:403:ARG:HD2	2.47	0.50
1:A:189:PHE:CZ	1:A:299:SER:HB3	2.46	0.49
1:A:189:PHE:HZ	1:A:299:SER:HB3	1.76	0.49
1:A:46:PHE:O	1:A:225:VAL:HG13	2.11	0.49
1:A:365:ARG:O	1:A:402:HIS:HB3	2.13	0.49
1:A:291:SER:OG	1:A:292:ASP:N	2.45	0.48
1:A:113:PHE:CD2	1:A:293:LEU:HD11	2.49	0.48
1:A:430:TYR:O	1:A:431:ILE:HD13	2.14	0.48
1:A:379:LYS:O	1:A:381[B]:VAL:HG23	2.15	0.47
1:A:305:ALA:O	1:A:309:THR:HG23	2.14	0.47
1:A:358:MET:HG2	1:A:419:PHE:O	2.15	0.47
1:A:309:THR:OG1	1:A:310:THR:N	2.49	0.46
1:A:91:LYS:HG3	1:A:430:TYR:CZ	2.51	0.46
1:A:483:LEU:HA	1:A:483:LEU:HD12	1.71	0.46
1:A:275:MET:O	1:A:278:SER:OG	2.30	0.46
1:A:105:ARG:CB	3:A:602:G0Y:C03	2.84	0.46
1:A:160:LEU:HD23	1:A:160:LEU:HA	1.75	0.46
1:A:58:CYS:HB3	1:A:399:TYR:CD2	2.52	0.45
1:A:176:PHE:CE2	1:A:314:LEU:HB3	2.51	0.45
1:A:156:LEU:HD13	1:A:179:TYR:HB2	1.98	0.45
1:A:106:ARG:NH2	1:A:374:GLU:OE2	2.37	0.45
1:A:475:LEU:HD11	1:A:485:PRO:HB3	1.99	0.44
1:A:250:ARG:HA	1:A:296:VAL:HG11	1.98	0.44
1:A:305:ALA:O	1:A:309:THR:CG2	2.65	0.44
1:A:201:ASP:O	1:A:203:PHE:N	2.50	0.44
1:A:86:ASP:HB3	1:A:89:MET:HB2	1.98	0.44
1:A:381[B]:VAL:HG12	1:A:382:GLU:N	2.33	0.44

Continued on next page...

Continued from previous page...

Atom-1	Atom-2	Interatomic distance (Å)	Clash overlap (Å)
1:A:28:HIS:C	1:A:30:HIS:H	2.21	0.44
1:A:43:PRO:HB2	1:A:48:GLY:HA2	1.99	0.44
1:A:199:PRO:HB2	1:A:200:GLN:H	1.49	0.43
1:A:389:PRO:HD2	1:A:392:VAL:HG21	1.99	0.43
1:A:148:ILE:HD12	1:A:148:ILE:H	1.83	0.43
1:A:170:VAL:O	1:A:490:VAL:HA	2.19	0.42
1:A:458:ARG:HD2	1:A:458:ARG:HA	1.63	0.42
1:A:408:TRP:HB2	1:A:411:PRO:HB3	2.00	0.42
1:A:219:PHE:HE2	1:A:240:VAL:HG12	1.84	0.42
1:A:171:THR:HG22	1:A:490:VAL:HG12	2.01	0.42
1:A:223:ILE:HA	1:A:223:ILE:HD13	1.81	0.42
1:A:172:LEU:HD23	1:A:172:LEU:HA	1.76	0.42
1:A:71[A]:VAL:HG21	1:A:386:MET:HE1	2.02	0.41
1:A:329:GLN:O	1:A:333:GLU:HG3	2.20	0.41
1:A:275:MET:HE2	1:A:275:MET:HB3	1.90	0.41
2:A:601:HEM:ND	3:A:602:G0Y:C30	2.83	0.41
1:A:169:PRO:HG3	1:A:468:CYS:SG	2.60	0.41
1:A:187:THR:O	1:A:270:ASP:HB2	2.20	0.41
1:A:106:ARG:O	3:A:602:G0Y:C01	2.68	0.41
1:A:254:LYS:HB2	1:A:254:LYS:HE3	1.80	0.41
1:A:76:ASP:OD2	1:A:106:ARG:NH1	2.45	0.41
1:A:241:PHE:CE2	3:A:602:G0Y:C17	3.04	0.40
1:A:257:LYS:NZ	1:A:279:GLN:OE1	2.54	0.40
1:A:113:PHE:CZ	1:A:246:THR:HB	2.57	0.40
1:A:194:ASP:HB3	1:A:198:ASN:OD1	2.21	0.40
1:A:58:CYS:SG	1:A:371:MET:HG2	2.62	0.40
1:A:135:PRO:HA	1:A:138:THR:HG23	2.02	0.40

There are no symmetry-related clashes.

5.3 Torsion angles [i](#)

5.3.1 Protein backbone [i](#)

In the following table, the Percentiles column shows the percent Ramachandran outliers of the chain as a percentile score with respect to all X-ray entries followed by that with respect to entries of similar resolution.

The Analysed column shows the number of residues for which the backbone conformation was analysed, and the total number of residues.

Mol	Chain	Analysed	Favoured	Allowed	Outliers	Percentiles
1	A	449/487 (92%)	415 (92%)	31 (7%)	3 (1%)	22 53

All (3) Ramachandran outliers are listed below:

Mol	Chain	Res	Type
1	A	167	GLY
1	A	199	PRO
1	A	369	ILE

5.3.2 Protein sidechains ⓘ

In the following table, the Percentiles column shows the percent sidechain outliers of the chain as a percentile score with respect to all X-ray entries followed by that with respect to entries of similar resolution.

The Analysed column shows the number of residues for which the sidechain conformation was analysed, and the total number of residues.

Mol	Chain	Analysed	Rotameric	Outliers	Percentiles
1	A	418/443 (94%)	406 (97%)	12 (3%)	42 76

All (12) residues with a non-rotameric sidechain are listed below:

Mol	Chain	Res	Type
1	A	27	THR
1	A	28	HIS
1	A	65	HIS
1	A	210	LEU
1	A	239	CYS
1	A	241	PHE
1	A	295	LEU
1	A	311	SER
1	A	437	SER
1	A	443	ILE
1	A	458	ARG
1	A	464	SER

Some sidechains can be flipped to improve hydrogen bonding and reduce clashes. All (1) such sidechains are listed below:

Mol	Chain	Res	Type
1	A	247	ASN

5.3.3 RNA ⓘ

There are no RNA molecules in this entry.

5.4 Non-standard residues in protein, DNA, RNA chains ⓘ

There are no non-standard protein/DNA/RNA residues in this entry.

5.5 Carbohydrates ⓘ

There are no carbohydrates in this entry.

5.6 Ligand geometry ⓘ

2 ligands are modelled in this entry.

In the following table, the Counts columns list the number of bonds (or angles) for which Mogul statistics could be retrieved, the number of bonds (or angles) that are observed in the model and the number of bonds (or angles) that are defined in the Chemical Component Dictionary. The Link column lists molecule types, if any, to which the group is linked. The Z score for a bond length (or angle) is the number of standard deviations the observed value is removed from the expected value. A bond length (or angle) with $|Z| > 2$ is considered an outlier worth inspection. RMSZ is the root-mean-square of all Z scores of the bond lengths (or angles).

Mol	Type	Chain	Res	Link	Bond lengths			Bond angles		
					Counts	RMSZ	# Z > 2	Counts	RMSZ	# Z > 2
3	G0Y	A	602	2	38,39,39	1.88	8 (21%)	44,51,51	2.43	11 (25%)
2	HEM	A	601	1,3	27,50,50	2.00	6 (22%)	17,82,82	1.99	6 (35%)

In the following table, the Chirals column lists the number of chiral outliers, the number of chiral centers analysed, the number of these observed in the model and the number defined in the Chemical Component Dictionary. Similar counts are reported in the Torsion and Rings columns. '-' means no outliers of that kind were identified.

Mol	Type	Chain	Res	Link	Chirals	Torsions	Rings
3	G0Y	A	602	2	-	12/32/32/32	0/3/3/3
2	HEM	A	601	1,3	-	0/6/54/54	-

All (14) bond length outliers are listed below:

Mol	Chain	Res	Type	Atoms	Z	Observed(Å)	Ideal(Å)
2	A	601	HEM	C3C-C2C	-6.00	1.32	1.40

Continued on next page...

Continued from previous page...

Mol	Chain	Res	Type	Atoms	Z	Observed(Å)	Ideal(Å)
3	A	602	G0Y	C12-C20	5.51	1.60	1.52
3	A	602	G0Y	O05-C06	4.70	1.44	1.34
3	A	602	G0Y	C12-S11	4.24	1.87	1.83
2	A	601	HEM	C3B-C2B	-4.00	1.34	1.40
3	A	602	G0Y	C31-C32	-3.71	1.42	1.51
2	A	601	HEM	C3C-CAC	3.48	1.54	1.47
3	A	602	G0Y	O21-C20	3.07	1.29	1.23
3	A	602	G0Y	C09-N08	2.65	1.52	1.46
2	A	601	HEM	C3B-CAB	2.64	1.53	1.47
3	A	602	G0Y	C04-C02	2.54	1.58	1.51
2	A	601	HEM	C4B-CHC	-2.21	1.34	1.41
2	A	601	HEM	C1A-CHA	-2.11	1.35	1.41
3	A	602	G0Y	C06-N08	2.10	1.39	1.34

All (17) bond angle outliers are listed below:

Mol	Chain	Res	Type	Atoms	Z	Observed(°)	Ideal(°)
3	A	602	G0Y	C14-C13-C12	-10.39	98.43	113.32
3	A	602	G0Y	O05-C06-N08	5.18	118.73	110.02
2	A	601	HEM	CBA-CAA-C2A	-4.73	103.76	112.49
3	A	602	G0Y	C23-C24-C25	-4.20	103.13	112.87
3	A	602	G0Y	O07-C06-N08	-3.76	118.69	124.85
3	A	602	G0Y	C10-C09-C31	-3.21	105.36	111.76
3	A	602	G0Y	C09-N08-C06	-3.00	117.69	122.30
3	A	602	G0Y	O21-C20-N22	-2.76	117.06	122.99
2	A	601	HEM	C1D-C2D-C3D	2.68	108.86	107.00
2	A	601	HEM	CMB-C2B-C3B	2.65	129.64	124.68
2	A	601	HEM	CMA-C3A-C4A	-2.60	124.46	128.46
3	A	602	G0Y	C13-C14-C15	2.60	126.07	120.91
3	A	602	G0Y	O21-C20-C12	-2.55	117.92	121.61
3	A	602	G0Y	C03-C02-C04	-2.46	104.72	111.16
3	A	602	G0Y	C18-C19-C14	2.43	124.35	120.63
2	A	601	HEM	CMD-C2D-C1D	-2.35	124.86	128.46
2	A	601	HEM	C3C-C4C-NC	-2.02	107.12	110.94

There are no chirality outliers.

All (12) torsion outliers are listed below:

Mol	Chain	Res	Type	Atoms
3	A	602	G0Y	C10-C09-N08-C06
3	A	602	G0Y	S11-C12-C13-C14
3	A	602	G0Y	O07-C06-N08-C09

Continued on next page...

Continued from previous page...

Mol	Chain	Res	Type	Atoms
3	A	602	G0Y	O05-C06-N08-C09
3	A	602	G0Y	C12-C13-C14-C19
3	A	602	G0Y	N22-C23-C24-C25
3	A	602	G0Y	C12-C13-C14-C15
3	A	602	G0Y	C09-C31-C32-C33
3	A	602	G0Y	C09-C31-C32-C37
3	A	602	G0Y	C13-C12-C20-O21
3	A	602	G0Y	C13-C12-C20-N22
3	A	602	G0Y	C20-C12-C13-C14

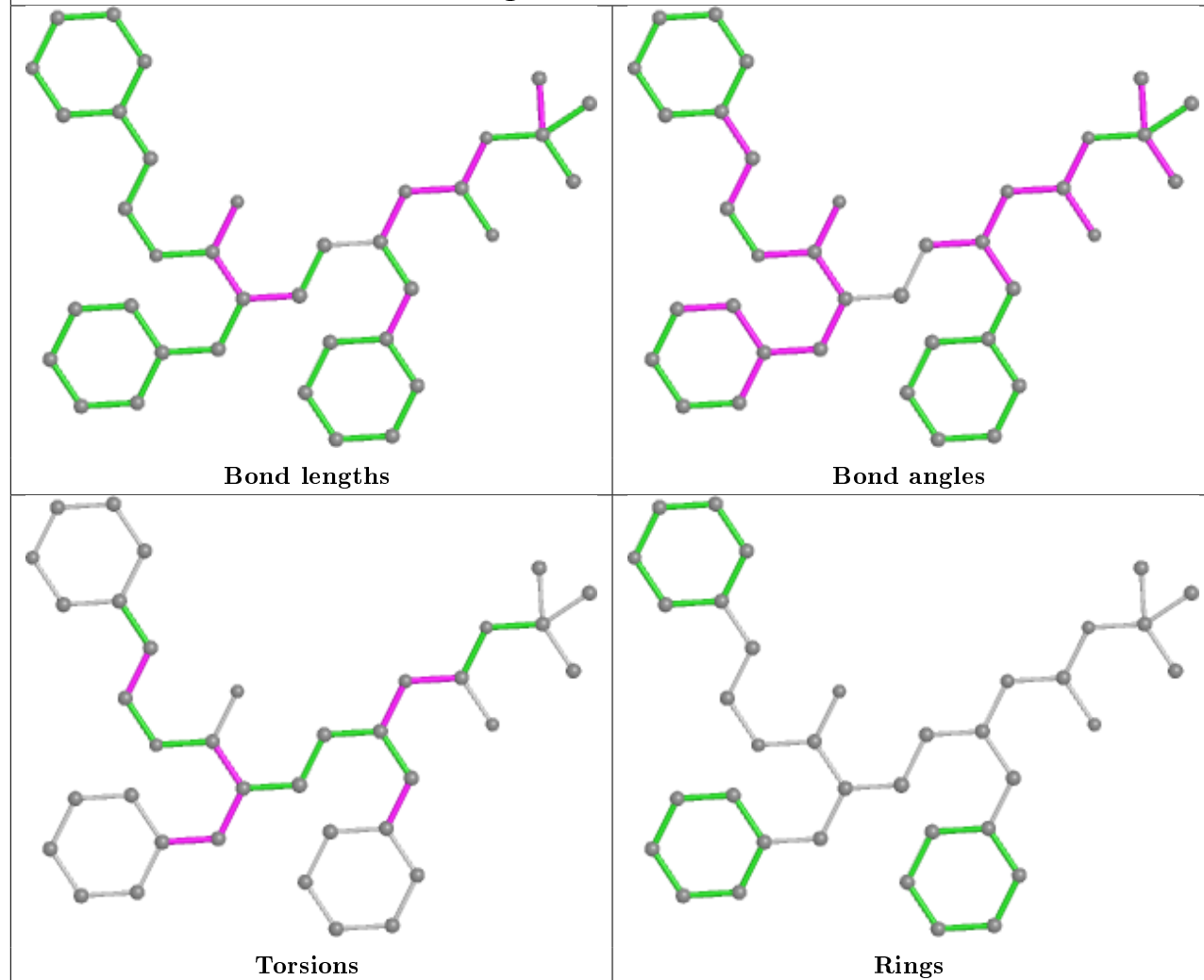
There are no ring outliers.

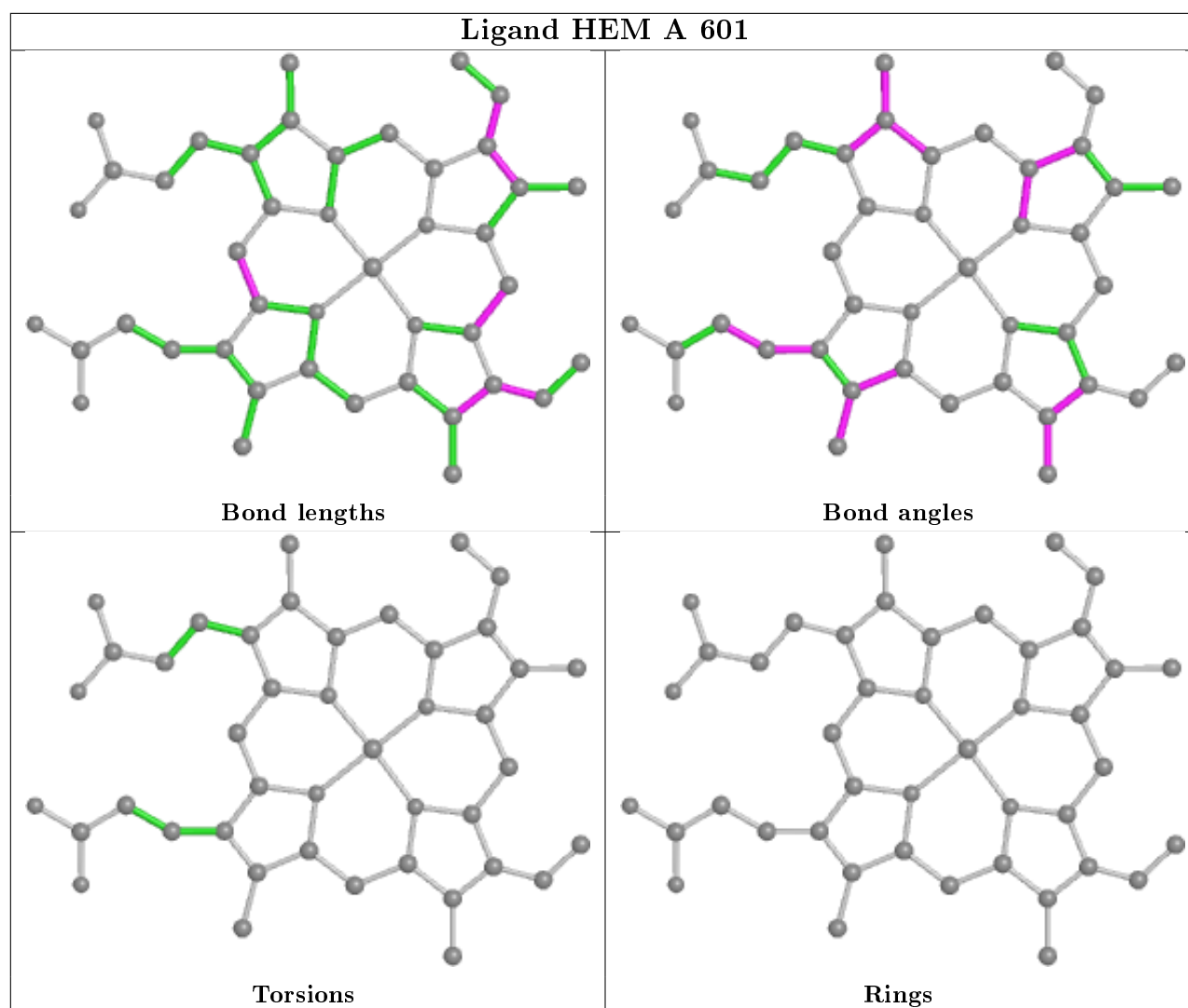
2 monomers are involved in 11 short contacts:

Mol	Chain	Res	Type	Clashes	Symm-Clashes
3	A	602	G0Y	8	0
2	A	601	HEM	4	0

The following is a two-dimensional graphical depiction of Mogul quality analysis of bond lengths, bond angles, torsion angles, and ring geometry for all instances of the Ligand of Interest. In addition, ligands with molecular weight > 250 and outliers as shown on the validation Tables will also be included. For torsion angles, if less than 5% of the Mogul distribution of torsion angles is within 10 degrees of the torsion angle in question, then that torsion angle is considered an outlier. Any bond that is central to one or more torsion angles identified as an outlier by Mogul will be highlighted in the graph. For rings, the root-mean-square deviation (RMSD) between the ring in question and similar rings identified by Mogul is calculated over all ring torsion angles. If the average RMSD is greater than 60 degrees and the minimal RMSD between the ring in question and any Mogul-identified rings is also greater than 60 degrees, then that ring is considered an outlier. The outliers are highlighted in purple. The color gray indicates Mogul did not find sufficient equivalents in the CSD to analyse the geometry.

Ligand G0Y A 602





5.7 Other polymers [i](#)

There are no such residues in this entry.

5.8 Polymer linkage issues [i](#)

There are no chain breaks in this entry.

6 Fit of model and data [i](#)

6.1 Protein, DNA and RNA chains [i](#)

In the following table, the column labelled ‘#RSRZ> 2’ contains the number (and percentage) of RSRZ outliers, followed by percent RSRZ outliers for the chain as percentile scores relative to all X-ray entries and entries of similar resolution. The OWAB column contains the minimum, median, 95th percentile and maximum values of the occupancy-weighted average B-factor per residue. The column labelled ‘Q< 0.9’ lists the number of (and percentage) of residues with an average occupancy less than 0.9.

Mol	Chain	Analysed	<RSRZ>	#RSRZ>2	OWAB(Å ²)	Q<0.9
1	A	451/487 (92%)	-0.03	16 (3%) 44 34	70, 123, 217, 264	0

All (16) RSRZ outliers are listed below:

Mol	Chain	Res	Type	RSRZ
1	A	491	LEU	4.8
1	A	170	VAL	4.0
1	A	269	VAL	3.8
1	A	149	ILE	3.3
1	A	208	LYS	3.3
1	A	472	GLN	2.9
1	A	489	VAL	2.8
1	A	203	PHE	2.6
1	A	261	LEU	2.3
1	A	176	PHE	2.3
1	A	456	LEU	2.3
1	A	160	LEU	2.2
1	A	479	LEU	2.2
1	A	260	ARG	2.1
1	A	205	GLU	2.1
1	A	69	GLY	2.1

6.2 Non-standard residues in protein, DNA, RNA chains [i](#)

There are no non-standard protein/DNA/RNA residues in this entry.

6.3 Carbohydrates [i](#)

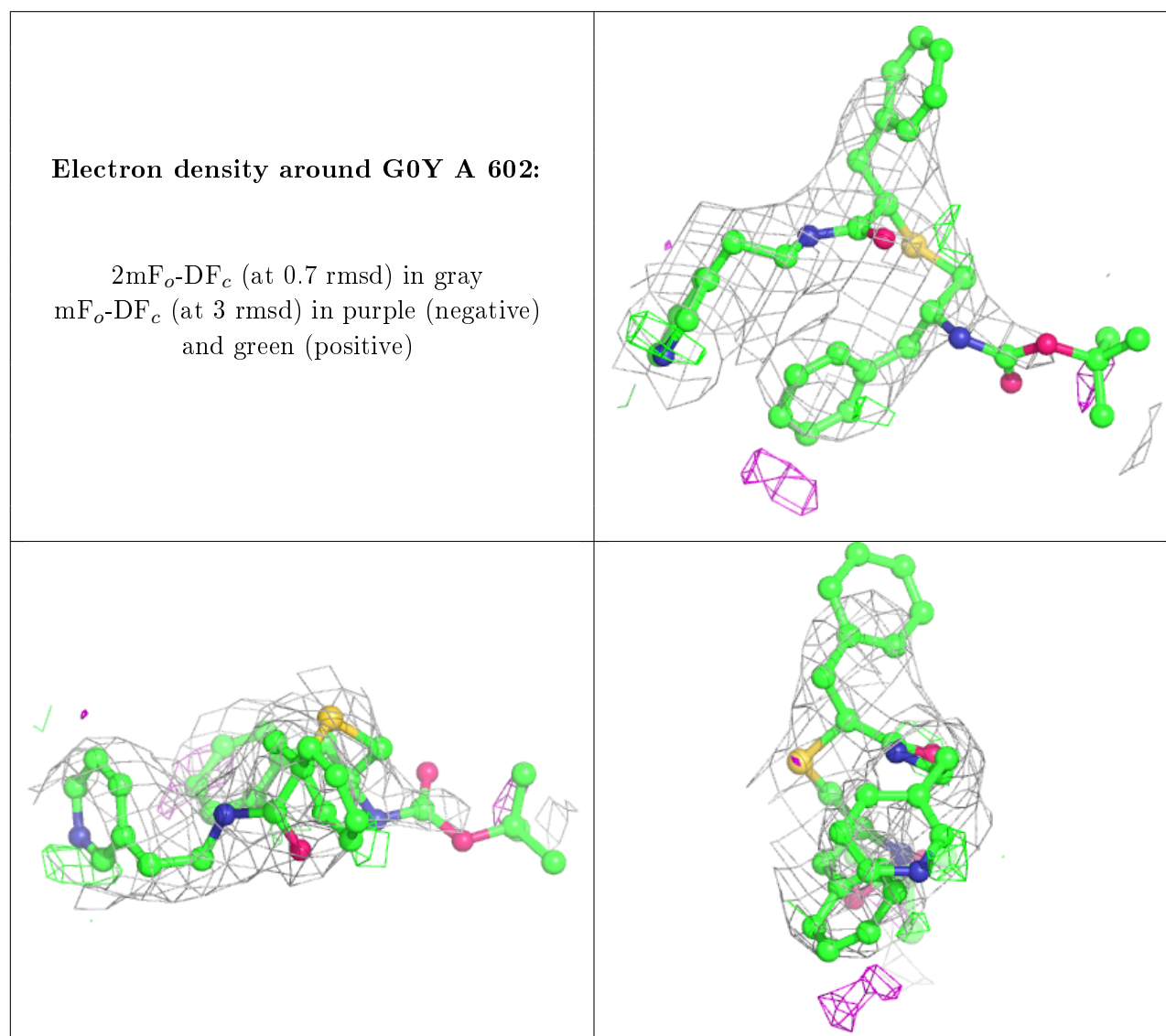
There are no carbohydrates in this entry.

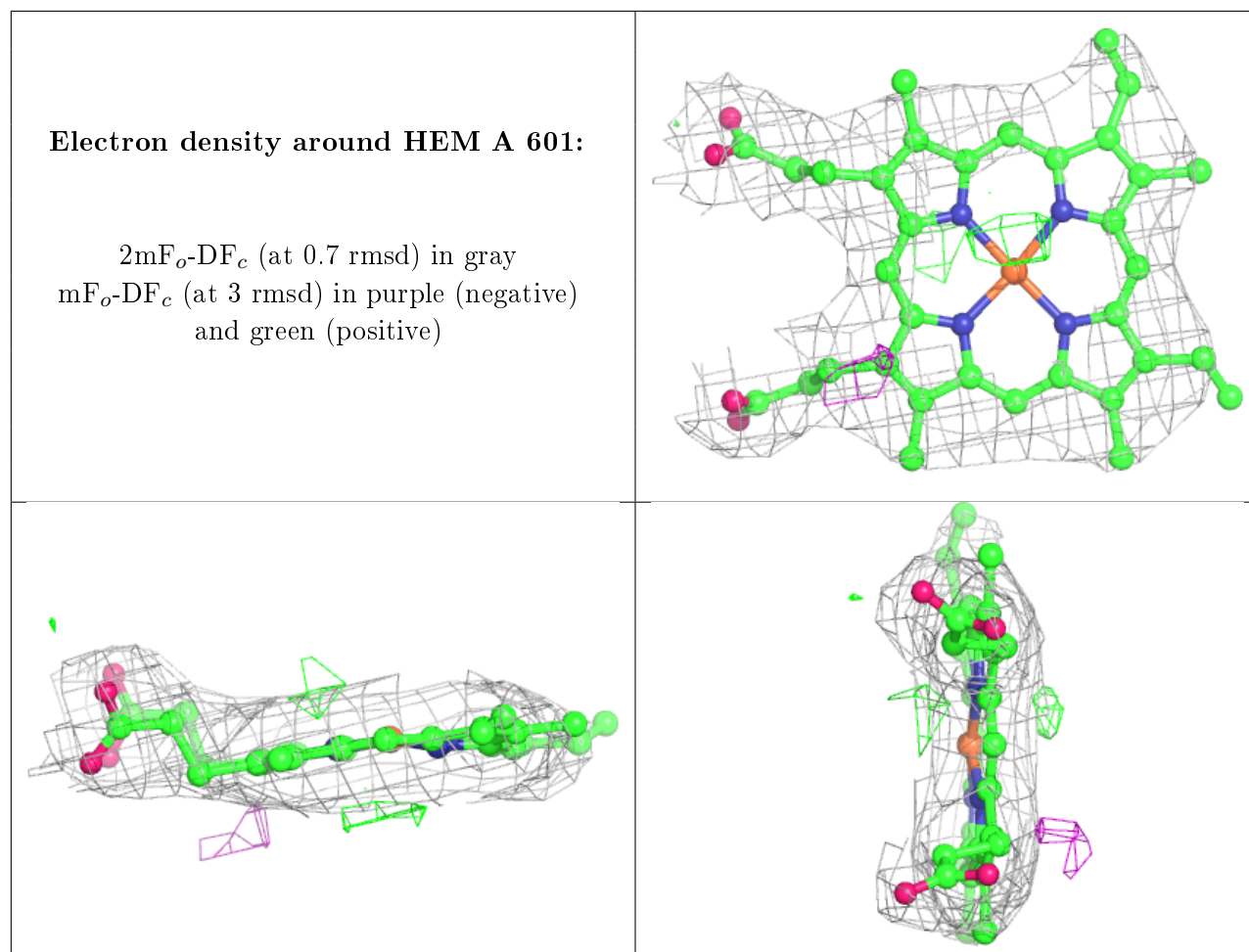
6.4 Ligands [i](#)

In the following table, the Atoms column lists the number of modelled atoms in the group and the number defined in the chemical component dictionary. The B-factors column lists the minimum, median, 95th percentile and maximum values of B factors of atoms in the group. The column labelled 'Q<0.9' lists the number of atoms with occupancy less than 0.9.

Mol	Type	Chain	Res	Atoms	RSCC	RSR	B-factors(Å ²)	Q<0.9
3	G0Y	A	602	37/37	0.93	0.32	60,143,180,185	0
2	HEM	A	601	43/43	0.98	0.18	53,66,82,87	0

The following is a graphical depiction of the model fit to experimental electron density of all instances of the Ligand of Interest. In addition, ligands with molecular weight > 250 and outliers as shown on the geometry validation Tables will also be included. Each fit is shown from different orientation to approximate a three-dimensional view.





6.5 Other polymers [i](#)

There are no such residues in this entry.