



Full wwPDB X-ray Structure Validation Report ⓘ

May 22, 2020 – 03:48 pm BST

PDB ID : 6DAY
Title : Xanthomonas albilineans Dihydropteroate synthase with 4-aminobenzoic acid at 1.65 Å
Authors : Oliveira, A.A.; Guido, R.V.C.; Lima, G.M.A.; Bueno, R.V.; Maluf, F.V.
Deposited on : 2018-05-02
Resolution : 1.65 Å(reported)

This is a Full wwPDB X-ray Structure Validation Report for a publicly released PDB entry.

We welcome your comments at validation@mail.wwpdb.org

A user guide is available at

<https://www.wwpdb.org/validation/2017/XrayValidationReportHelp>

with specific help available everywhere you see the ⓘ symbol.

The following versions of software and data (see [references ⓘ](#)) were used in the production of this report:

MolProbity	:	4.02b-467
Mogul	:	1.8.5 (274361), CSD as541be (2020)
Xtriage (Phenix)	:	1.13
EDS	:	2.11
Percentile statistics	:	20191225.v01 (using entries in the PDB archive December 25th 2019)
Refmac	:	5.8.0158
CCP4	:	7.0.044 (Gargrove)
Ideal geometry (proteins)	:	Engh & Huber (2001)
Ideal geometry (DNA, RNA)	:	Parkinson et al. (1996)
Validation Pipeline (wwPDB-VP)	:	2.11

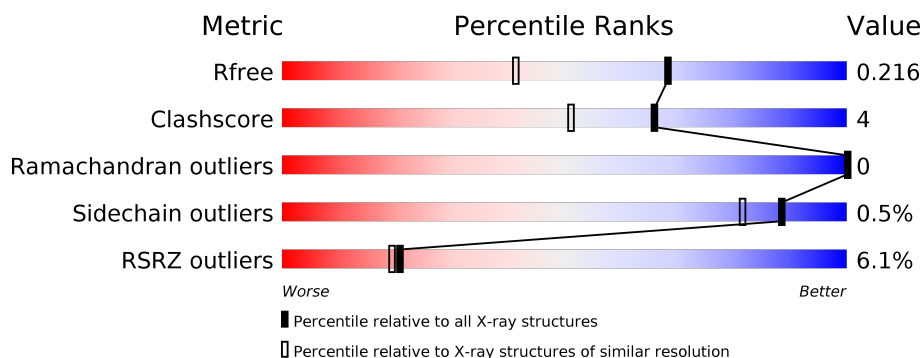
1 Overall quality at a glance

The following experimental techniques were used to determine the structure:

X-RAY DIFFRACTION

The reported resolution of this entry is 1.65 Å.

Percentile scores (ranging between 0-100) for global validation metrics of the entry are shown in the following graphic. The table shows the number of entries on which the scores are based.



Metric	Whole archive (#Entries)	Similar resolution (#Entries, resolution range(Å))
R_{free}	130704	1827 (1.66-1.66)
Clashscore	141614	1931 (1.66-1.66)
Ramachandran outliers	138981	1891 (1.66-1.66)
Sidechain outliers	138945	1891 (1.66-1.66)
RSRZ outliers	127900	1791 (1.66-1.66)

The table below summarises the geometric issues observed across the polymeric chains and their fit to the electron density. The red, orange, yellow and green segments on the lower bar indicate the fraction of residues that contain outliers for ≥ 3 , 2, 1 and 0 types of geometric quality criteria respectively. A grey segment represents the fraction of residues that are not modelled. The numeric value for each fraction is indicated below the corresponding segment, with a dot representing fractions $\leq 5\%$. The upper red bar (where present) indicates the fraction of residues that have poor fit to the electron density. The numeric value is given above the bar.

Mol	Chain	Length	Quality of chain
1	A	300	<div> <div>4%</div> <div> <div></div> <div>83%</div> <div>•</div> <div>14%</div> </div> </div>
1	B	300	<div> <div>10%</div> <div> <div></div> <div>75%</div> <div>14%</div> <div>10%</div> </div> </div>
1	C	300	<div> <div>3%</div> <div> <div></div> <div>80%</div> <div>8%</div> <div>12%</div> </div> </div>
1	D	300	<div> <div>5%</div> <div> <div></div> <div>89%</div> <div>•</div> <div>9%</div> </div> </div>

2 Entry composition [i](#)

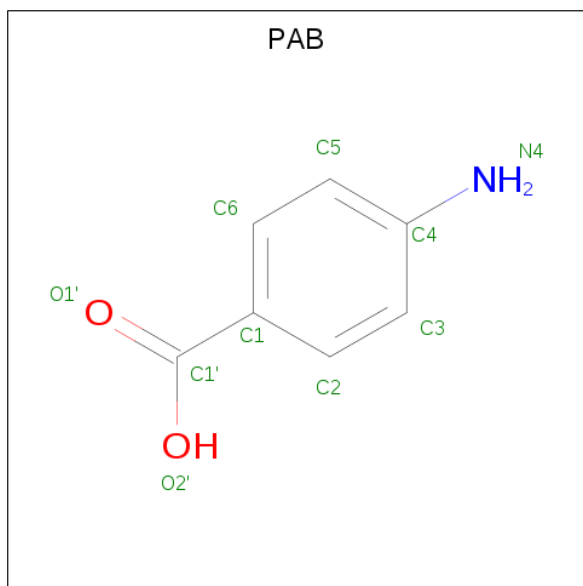
There are 5 unique types of molecules in this entry. The entry contains 8469 atoms, of which 0 are hydrogens and 0 are deuteriums.

In the tables below, the ZeroOcc column contains the number of atoms modelled with zero occupancy, the AltConf column contains the number of residues with at least one atom in alternate conformation and the Trace column contains the number of residues modelled with at most 2 atoms.

- Molecule 1 is a protein called Dihydropteroate synthase.

Mol	Chain	Residues	Atoms					ZeroOcc	AltConf	Trace
1	A	259	Total	C	N	O	S	0	0	0
			1882	1195	338	341	8			
1	B	269	Total	C	N	O	S	0	1	0
			1893	1197	346	343	7			
1	C	264	Total	C	N	O	S	0	1	0
			1927	1219	349	351	8			
1	D	273	Total	C	N	O	S	0	0	0
			1983	1251	360	364	8			

- Molecule 2 is 4-AMINOBENZOIC ACID (three-letter code: PAB) (formula: C₇H₇NO₂).



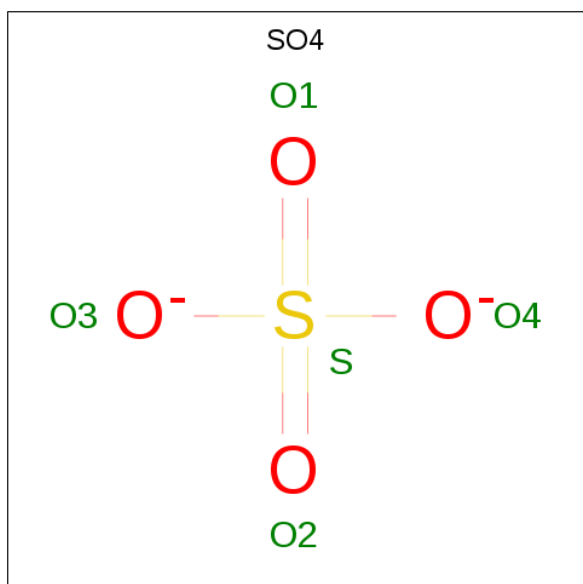
Mol	Chain	Residues	Atoms				ZeroOcc	AltConf
2	A	1	Total	C	N	O	0	0
			10	7	1	2		
2	A	1	Total	C	N	O	0	0
			10	7	1	2		

Continued on next page...

Continued from previous page...

Mol	Chain	Residues	Atoms				ZeroOcc	AltConf
2	B	1	Total	C	N	O	0	0
			10	7	1	2		
2	B	1	Total	C	N	O	0	0
			10	7	1	2		
2	B	1	Total	C	N	O	0	0
			10	7	1	2		
2	C	1	Total	C	N	O	0	0
			10	7	1	2		
2	D	1	Total	C	N	O	0	0
			10	7	1	2		
2	D	1	Total	C	N	O	0	0
			10	7	1	2		

- Molecule 3 is SULFATE ION (three-letter code: SO4) (formula: O₄S).



Mol	Chain	Residues	Atoms			ZeroOcc	AltConf
3	A	1	Total	O	S	0	0
			5	4	1		
3	A	1	Total	O	S	0	0
			5	4	1		
3	B	1	Total	O	S	0	0
			5	4	1		
3	B	1	Total	O	S	0	0
			5	4	1		
3	C	1	Total	O	S	0	0
			5	4	1		

Continued on next page...

Continued from previous page...

Mol	Chain	Residues	Atoms			ZeroOcc	AltConf
3	D	1	Total	O	S	0	0
			5	4	1		

- Molecule 4 is GLYCEROL (three-letter code: GOL) (formula: $C_3H_8O_3$).



Mol	Chain	Residues	Atoms			ZeroOcc	AltConf
4	C	1	Total	C	O	0	0
			6	3	3		
4	C	1	Total	C	O	0	0
			6	3	3		
4	D	1	Total	C	O	0	0
			6	3	3		

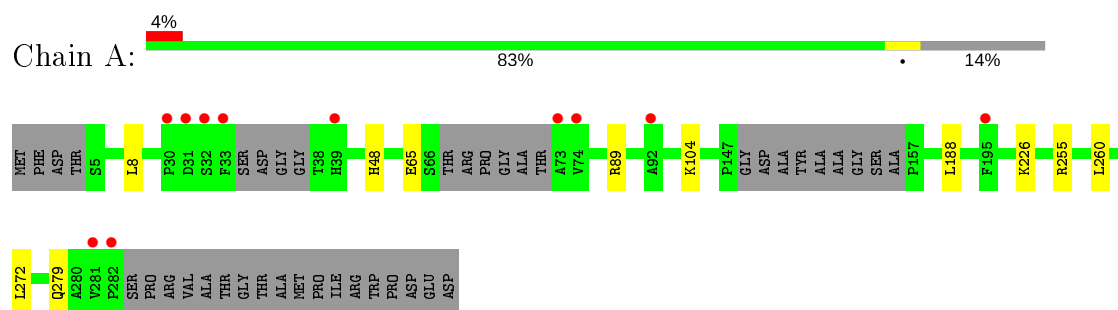
- Molecule 5 is water.

Mol	Chain	Residues	Atoms		ZeroOcc	AltConf
5	A	167	Total	O	0	0
			167	167		
5	B	95	Total	O	0	0
			95	95		
5	C	201	Total	O	0	0
			201	201		
5	D	193	Total	O	0	0
			193	193		

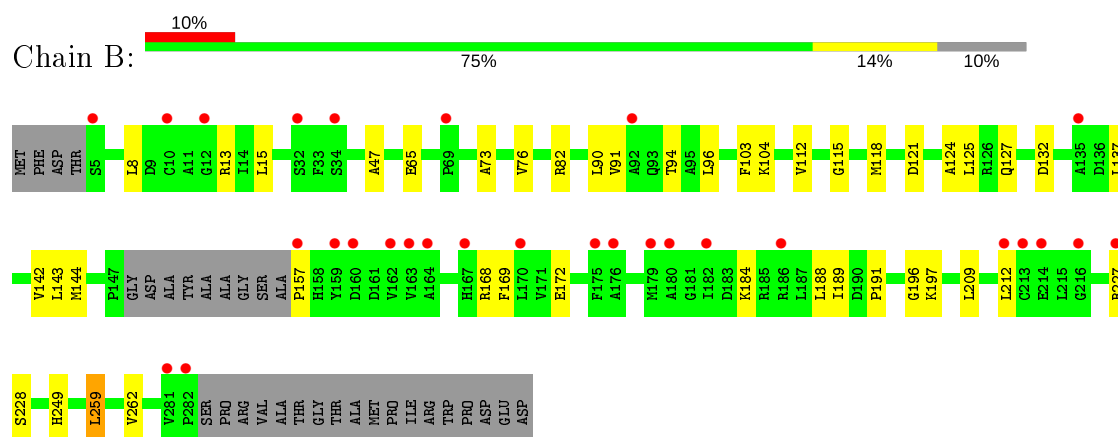
3 Residue-property plots [i](#)

These plots are drawn for all protein, RNA and DNA chains in the entry. The first graphic for a chain summarises the proportions of the various outlier classes displayed in the second graphic. The second graphic shows the sequence view annotated by issues in geometry and electron density. Residues are color-coded according to the number of geometric quality criteria for which they contain at least one outlier: green = 0, yellow = 1, orange = 2 and red = 3 or more. A red dot above a residue indicates a poor fit to the electron density ($RSRZ > 2$). Stretches of 2 or more consecutive residues without any outlier are shown as a green connector. Residues present in the sample, but not in the model, are shown in grey.

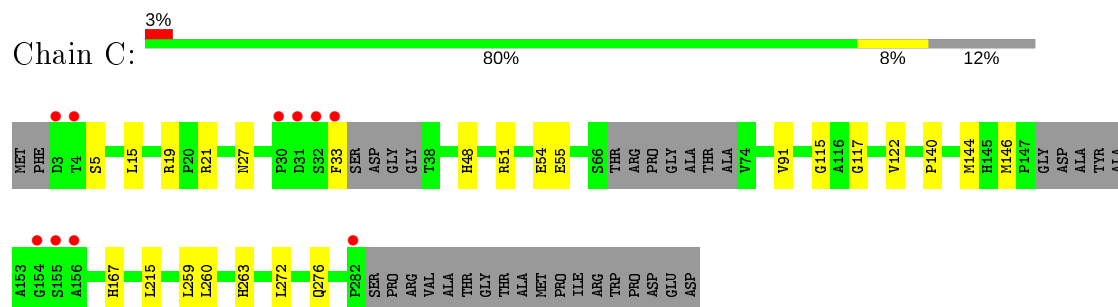
- Molecule 1: Dihydropteroate synthase



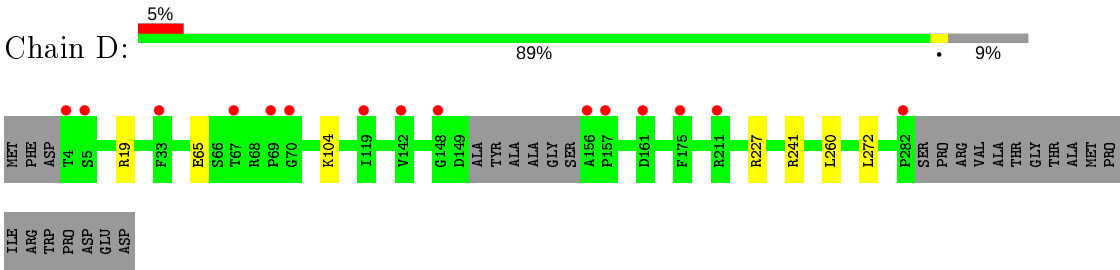
- Molecule 1: Dihydropteroate synthase



- Molecule 1: Dihydropteroate synthase



- Molecule 1: Dihydropteroate synthase



4 Data and refinement statistics

Property	Value	Source
Space group	P 1 21 1	Depositor
Cell constants a, b, c, α , β , γ	82.59Å 75.39Å 89.11Å 90.00° 101.10° 90.00°	Depositor
Resolution (Å)	32.75 – 1.65 34.18 – 1.65	Depositor EDS
% Data completeness (in resolution range)	99.0 (32.75-1.65) 91.5 (34.18-1.65)	Depositor EDS
R_{merge}	0.02	Depositor
R_{sym}	(Not available)	Depositor
$\langle I/\sigma(I) \rangle$ ¹	2.19 (at 1.65Å)	Xtriage
Refinement program	PHENIX 1.13 _2998	Depositor
R, R_{free}	0.177 , 0.216 0.177 , 0.216	Depositor DCC
R_{free} test set	6370 reflections (4.98%)	wwPDB-VP
Wilson B-factor (Å ²)	21.5	Xtriage
Anisotropy	0.753	Xtriage
Bulk solvent k_{sol} (e/Å ³), B_{sol} (Å ²)	0.37 , 56.9	EDS
L-test for twinning ²	$\langle L \rangle = 0.49$, $\langle L^2 \rangle = 0.32$	Xtriage
Estimated twinning fraction	No twinning to report.	Xtriage
F_o, F_c correlation	0.97	EDS
Total number of atoms	8469	wwPDB-VP
Average B, all atoms (Å ²)	39.0	wwPDB-VP

Xtriage's analysis on translational NCS is as follows: *The analyses of the Patterson function reveals a significant off-origin peak that is 58.80 % of the origin peak, indicating pseudo-translational symmetry. The chance of finding a peak of this or larger height randomly in a structure without pseudo-translational symmetry is equal to 1.9403e-05. The detected translational NCS is most likely also responsible for the elevated intensity ratio.*

¹ Intensities estimated from amplitudes.

² Theoretical values of $\langle |L| \rangle$, $\langle L^2 \rangle$ for acentric reflections are 0.5, 0.333 respectively for untwinned datasets, and 0.375, 0.2 for perfectly twinned datasets.

5 Model quality [i](#)

5.1 Standard geometry [i](#)

Bond lengths and bond angles in the following residue types are not validated in this section: GOL, PAB, SO4

The Z score for a bond length (or angle) is the number of standard deviations the observed value is removed from the expected value. A bond length (or angle) with $|Z| > 5$ is considered an outlier worth inspection. RMSZ is the root-mean-square of all Z scores of the bond lengths (or angles).

Mol	Chain	Bond lengths		Bond angles	
		RMSZ	# Z >5	RMSZ	# Z >5
1	A	0.49	0/1911	0.68	0/2609
1	B	0.46	0/1923	0.68	1/2631 (0.0%)
1	C	0.55	0/1956	0.69	0/2668
1	D	0.49	0/2014	0.66	0/2749
All	All	0.50	0/7804	0.68	1/10657 (0.0%)

There are no bond length outliers.

All (1) bond angle outliers are listed below:

Mol	Chain	Res	Type	Atoms	Z	Observed(°)	Ideal(°)
1	B	259	LEU	CB-CG-CD1	-8.23	97.00	111.00

There are no chirality outliers.

There are no planarity outliers.

5.2 Too-close contacts [i](#)

In the following table, the Non-H and H(model) columns list the number of non-hydrogen atoms and hydrogen atoms in the chain respectively. The H(added) column lists the number of hydrogen atoms added and optimized by MolProbity. The Clashes column lists the number of clashes within the asymmetric unit, whereas Symm-Clashes lists symmetry related clashes.

Mol	Chain	Non-H	H(model)	H(added)	Clashes	Symm-Clashes
1	A	1882	0	1898	6	0
1	B	1893	0	1877	34	0
1	C	1927	0	1944	18	0
1	D	1983	0	2016	5	0
2	A	20	0	12	1	0
2	B	30	0	18	5	0

Continued on next page...

Continued from previous page...

Mol	Chain	Non-H	H(model)	H(added)	Clashes	Symm-Clashes
2	C	10	0	6	0	0
2	D	20	0	12	0	0
3	A	10	0	0	0	0
3	B	10	0	0	0	0
3	C	5	0	0	0	0
3	D	5	0	0	0	0
4	C	12	0	16	2	0
4	D	6	0	8	0	0
5	A	167	0	0	1	0
5	B	95	0	0	5	0
5	C	201	0	0	4	0
5	D	193	0	0	1	0
All	All	8469	0	7807	63	0

The all-atom clashscore is defined as the number of clashes found per 1000 atoms (including hydrogen atoms). The all-atom clashscore for this structure is 4.

All (63) close contacts within the same asymmetric unit are listed below, sorted by their clash magnitude.

Atom-1	Atom-2	Interatomic distance (Å)	Clash overlap (Å)
1:B:191:PRO:O	1:B:197:LYS:NZ	2.00	0.94
1:B:91:VAL:HG11	1:B:115:GLY:HA3	1.67	0.75
1:C:54:GLU:OE1	5:C:501:HOH:O	2.04	0.74
1:C:19:ARG:HB2	1:C:276:GLN:HE22	1.50	0.74
1:D:19:ARG:NH1	5:D:501:HOH:O	2.22	0.72
1:B:132:ASP:OD2	5:B:501:HOH:O	2.06	0.72
1:B:228:SER:OG	5:B:502:HOH:O	2.10	0.70
1:C:5:SER:OG	5:C:502:HOH:O	2.11	0.68
1:B:76:VAL:HG22	1:B:104:LYS:HD3	1.74	0.67
1:B:112:VAL:HG21	1:B:137:LEU:HD13	1.77	0.66
1:C:19:ARG:HB2	1:C:276:GLN:NE2	2.13	0.62
1:B:168:ARG:O	1:B:172:GLU:HG3	2.00	0.62
1:D:227:ARG:NH1	1:D:241:ARG:HH12	1.97	0.62
1:C:51:ARG:NH1	1:C:54:GLU:OE2	2.34	0.61
1:C:55:GLU:OE1	5:C:503:HOH:O	2.16	0.60
1:B:121:ASP:OD1	1:B:125:LEU:HD23	2.02	0.60
1:A:8:LEU:HD11	1:A:188:LEU:HD21	1.85	0.59
1:B:127:GLN:HB2	5:B:528:HOH:O	2.04	0.57
1:B:65:GLU:OE2	1:B:104:LYS:NZ	2.37	0.56
1:B:188:LEU:CD2	1:B:259:LEU:HD11	2.36	0.56
1:C:122:VAL:HA	1:C:144:MET:HE3	1.87	0.56

Continued on next page...

Continued from previous page...

Atom-1	Atom-2	Interatomic distance (Å)	Clash overlap (Å)
1:C:51:ARG:HD2	5:C:617:HOH:O	2.07	0.54
1:B:8:LEU:HD12	1:B:15:LEU:HD23	1.90	0.54
1:B:103:PHE:HD1	1:B:127:GLN:HG3	1.73	0.53
1:D:260:LEU:HD12	1:D:272:LEU:HD11	1.91	0.53
1:A:65:GLU:OE2	1:A:104:LYS:NZ	2.42	0.52
1:D:65:GLU:OE2	1:D:104:LYS:NZ	2.43	0.52
1:C:91:VAL:HG21	1:C:115:GLY:HA3	1.92	0.51
1:A:255:ARG:NE	5:A:502:HOH:O	2.20	0.51
1:A:260:LEU:HD12	1:A:272:LEU:HD11	1.91	0.51
1:B:124:ALA:HB2	1:B:144:MET:O	2.10	0.51
1:B:249:HIS:CE1	1:B:262:VAL:HG12	2.45	0.51
1:B:188:LEU:CD2	1:B:259:LEU:CD1	2.89	0.50
1:B:227:ARG:NH2	5:B:502:HOH:O	2.43	0.50
1:B:73:ALA:O	2:B:402:PAB:N4	2.45	0.50
1:A:89:ARG:HG3	1:A:89:ARG:HH11	1.77	0.50
1:B:143:LEU:O	1:B:189:ILE:HA	2.13	0.49
1:B:227:ARG:NH2	5:B:505:HOH:O	2.30	0.49
1:B:47:ALA:HB1	2:B:403:PAB:H3	1.95	0.49
1:B:82:ARG:NH2	2:B:402:PAB:H2	2.29	0.48
1:C:117:GLY:O	1:C:140:PRO:HD2	2.14	0.47
1:B:90:LEU:O	1:B:94:THR:HG22	2.15	0.46
1:C:167:HIS:NE2	1:C:215:LEU:HD21	2.30	0.46
1:B:47:ALA:HB1	2:B:403:PAB:C3	2.47	0.45
2:B:402:PAB:O2'	1:C:48:HIS:ND1	2.45	0.44
1:B:157:PRO:HG2	1:B:196:GLY:O	2.17	0.44
1:C:260:LEU:HD12	1:C:272:LEU:HD11	1.99	0.44
1:B:142:VAL:HA	1:B:188:LEU:HB2	2.00	0.44
1:B:209:LEU:HA	1:B:212:LEU:HD12	1.98	0.44
1:B:8:LEU:HB2	1:B:15:LEU:HB3	2.01	0.43
1:D:227:ARG:HH11	1:D:227:ARG:HG2	1.83	0.43
1:B:169:PHE:HA	1:B:172:GLU:OE2	2.19	0.43
1:C:263:HIS:NE2	4:C:402:GOL:H11	2.34	0.43
1:A:48:HIS:ND1	2:A:402:PAB:O1'	2.48	0.42
1:B:137:LEU:HD23	1:B:137:LEU:HA	1.81	0.42
1:B:188:LEU:HD21	1:B:259:LEU:HD11	2.01	0.42
1:C:21:ARG:HB2	1:C:259:LEU:HD23	2.00	0.42
1:C:27[A]:ASN:OD1	4:C:402:GOL:H12	2.20	0.42
1:B:76:VAL:HG22	1:B:104:LYS:CD	2.46	0.41
1:C:122:VAL:O	1:C:146:MET:HE2	2.20	0.41
1:B:13:ARG:NH1	1:B:96:LEU:O	2.45	0.41
1:B:118:MET:HE3	1:B:142:VAL:HG23	2.02	0.41

Continued on next page...

Continued from previous page...

Atom-1	Atom-2	Interatomic distance (Å)	Clash overlap (Å)
1:C:15:LEU:HD21	1:C:259:LEU:HD21	2.03	0.41

There are no symmetry-related clashes.

5.3 Torsion angles [i](#)

5.3.1 Protein backbone [i](#)

In the following table, the Percentiles column shows the percent Ramachandran outliers of the chain as a percentile score with respect to all X-ray entries followed by that with respect to entries of similar resolution.

The Analysed column shows the number of residues for which the backbone conformation was analysed, and the total number of residues.

Mol	Chain	Analysed	Favoured	Allowed	Outliers	Percentiles	
1	A	251/300 (84%)	246 (98%)	5 (2%)	0	100	100
1	B	266/300 (89%)	260 (98%)	6 (2%)	0	100	100
1	C	257/300 (86%)	253 (98%)	4 (2%)	0	100	100
1	D	269/300 (90%)	265 (98%)	4 (2%)	0	100	100
All	All	1043/1200 (87%)	1024 (98%)	19 (2%)	0	100	100

There are no Ramachandran outliers to report.

5.3.2 Protein sidechains [i](#)

In the following table, the Percentiles column shows the percent sidechain outliers of the chain as a percentile score with respect to all X-ray entries followed by that with respect to entries of similar resolution.

The Analysed column shows the number of residues for which the sidechain conformation was analysed, and the total number of residues.

Mol	Chain	Analysed	Rotameric	Outliers	Percentiles	
1	A	189/232 (82%)	187 (99%)	2 (1%)	73	57
1	B	180/232 (78%)	178 (99%)	2 (1%)	73	57
1	C	194/232 (84%)	193 (100%)	1 (0%)	88	81
1	D	201/232 (87%)	201 (100%)	0	100	100

Continued on next page...

Continued from previous page...

Mol	Chain	Analysed	Rotameric	Outliers	Percentiles	
All	All	764/928 (82%)	759 (99%)	5 (1%)	88	73

All (5) residues with a non-rotameric sidechain are listed below:

Mol	Chain	Res	Type
1	A	226	LYS
1	A	279	GLN
1	B	184[A]	LYS
1	B	184[B]	LYS
1	C	33	PHE

Some sidechains can be flipped to improve hydrogen bonding and reduce clashes. There are no such sidechains identified.

5.3.3 RNA [i](#)

There are no RNA molecules in this entry.

5.4 Non-standard residues in protein, DNA, RNA chains [i](#)

There are no non-standard protein/DNA/RNA residues in this entry.

5.5 Carbohydrates [i](#)

There are no carbohydrates in this entry.

5.6 Ligand geometry [i](#)

17 ligands are modelled in this entry.

In the following table, the Counts columns list the number of bonds (or angles) for which Mogul statistics could be retrieved, the number of bonds (or angles) that are observed in the model and the number of bonds (or angles) that are defined in the Chemical Component Dictionary. The Link column lists molecule types, if any, to which the group is linked. The Z score for a bond length (or angle) is the number of standard deviations the observed value is removed from the expected value. A bond length (or angle) with $|Z| > 2$ is considered an outlier worth inspection. RMSZ is the root-mean-square of all Z scores of the bond lengths (or angles).

Mol	Type	Chain	Res	Link	Bond lengths			Bond angles		
					Counts	RMSZ	# Z > 2	Counts	RMSZ	# Z > 2
2	PAB	A	402	-	8,10,10	2.01	2 (25%)	10,13,13	0.87	0
4	GOL	C	403	-	5,5,5	0.69	0	5,5,5	1.08	0
2	PAB	B	402	-	8,10,10	2.23	1 (12%)	10,13,13	0.90	0
2	PAB	C	401	-	8,10,10	2.01	2 (25%)	10,13,13	1.08	0
2	PAB	B	403	-	8,10,10	1.96	2 (25%)	10,13,13	0.92	0
3	SO4	B	404	-	4,4,4	0.17	0	6,6,6	0.10	0
3	SO4	D	404	-	4,4,4	0.16	0	6,6,6	0.27	0
2	PAB	A	401	-	8,10,10	2.00	2 (25%)	10,13,13	0.98	0
2	PAB	D	403	1	8,10,10	3.15	2 (25%)	10,13,13	0.81	0
4	GOL	D	402	-	5,5,5	1.03	0	5,5,5	1.05	0
4	GOL	C	402	-	5,5,5	0.60	0	5,5,5	0.98	0
3	SO4	A	403	-	4,4,4	0.13	0	6,6,6	0.11	0
3	SO4	C	404	-	4,4,4	0.17	0	6,6,6	0.20	0
3	SO4	A	404	-	4,4,4	0.17	0	6,6,6	0.09	0
2	PAB	B	401	-	8,10,10	2.20	2 (25%)	10,13,13	1.16	0
2	PAB	D	401	-	8,10,10	1.96	2 (25%)	10,13,13	1.13	0
3	SO4	B	405	-	4,4,4	0.14	0	6,6,6	0.08	0

In the following table, the Chirals column lists the number of chiral outliers, the number of chiral centers analysed, the number of these observed in the model and the number defined in the Chemical Component Dictionary. Similar counts are reported in the Torsion and Rings columns. '-' means no outliers of that kind were identified.

Mol	Type	Chain	Res	Link	Chirals	Torsions	Rings
2	PAB	A	402	-	-	0/0/4/4	0/1/1/1
4	GOL	C	403	-	-	2/4/4/4	-
2	PAB	B	402	-	-	0/0/4/4	0/1/1/1
2	PAB	C	401	-	-	0/0/4/4	0/1/1/1
2	PAB	B	403	-	-	0/0/4/4	0/1/1/1
2	PAB	A	401	-	-	0/0/4/4	0/1/1/1
2	PAB	D	403	1	-	0/0/4/4	0/1/1/1
4	GOL	D	402	-	-	4/4/4/4	-
4	GOL	C	402	-	-	2/4/4/4	-
2	PAB	B	401	-	-	0/0/4/4	0/1/1/1
2	PAB	D	401	-	-	0/0/4/4	0/1/1/1

All (15) bond length outliers are listed below:

Mol	Chain	Res	Type	Atoms	Z	Observed(Å)	Ideal(Å)
2	D	403	PAB	C1-C1'	8.53	1.55	1.47

Continued on next page...

Continued from previous page...

Mol	Chain	Res	Type	Atoms	Z	Observed(Å)	Ideal(Å)
2	B	402	PAB	C1-C1'	5.93	1.53	1.47
2	B	401	PAB	C1-C1'	5.78	1.53	1.47
2	A	402	PAB	C1-C1'	5.27	1.52	1.47
2	C	401	PAB	C1-C1'	5.19	1.52	1.47
2	A	401	PAB	C1-C1'	5.16	1.52	1.47
2	B	403	PAB	C1-C1'	5.04	1.52	1.47
2	D	401	PAB	C1-C1'	5.01	1.52	1.47
2	D	403	PAB	C4-N4	2.31	1.46	1.38
2	D	401	PAB	C4-N4	2.28	1.46	1.38
2	B	401	PAB	C4-N4	2.24	1.46	1.38
2	A	401	PAB	C4-N4	2.22	1.46	1.38
2	B	403	PAB	C4-N4	2.10	1.45	1.38
2	C	401	PAB	C4-N4	2.04	1.45	1.38
2	A	402	PAB	C4-N4	2.01	1.45	1.38

There are no bond angle outliers.

There are no chirality outliers.

All (8) torsion outliers are listed below:

Mol	Chain	Res	Type	Atoms
4	C	402	GOL	O1-C1-C2-C3
4	C	403	GOL	O1-C1-C2-C3
4	D	402	GOL	O1-C1-C2-C3
4	C	402	GOL	O1-C1-C2-O2
4	C	403	GOL	O1-C1-C2-O2
4	D	402	GOL	C1-C2-C3-O3
4	D	402	GOL	O1-C1-C2-O2
4	D	402	GOL	O2-C2-C3-O3

There are no ring outliers.

4 monomers are involved in 8 short contacts:

Mol	Chain	Res	Type	Clashes	Symm-Clashes
2	A	402	PAB	1	0
2	B	402	PAB	3	0
2	B	403	PAB	2	0
4	C	402	GOL	2	0

5.7 Other polymers [i](#)

There are no such residues in this entry.

5.8 Polymer linkage issues [i](#)

There are no chain breaks in this entry.

6 Fit of model and data ⓘ

6.1 Protein, DNA and RNA chains ⓘ

In the following table, the column labelled ‘#RSRZ> 2’ contains the number (and percentage) of RSRZ outliers, followed by percent RSRZ outliers for the chain as percentile scores relative to all X-ray entries and entries of similar resolution. The OWAB column contains the minimum, median, 95th percentile and maximum values of the occupancy-weighted average B-factor per residue. The column labelled ‘Q< 0.9’ lists the number of (and percentage) of residues with an average occupancy less than 0.9.

Mol	Chain	Analysed	<RSRZ>	#RSRZ>2	OWAB(Å ²)	Q<0.9
1	A	259/300 (86%)	-0.09	11 (4%) 36 35	19, 33, 63, 94	0
1	B	269/300 (89%)	0.59	29 (10%) 5 5	24, 47, 76, 101	0
1	C	264/300 (88%)	-0.13	10 (3%) 40 40	18, 28, 62, 97	0
1	D	273/300 (91%)	0.06	15 (5%) 25 24	20, 30, 59, 89	0
All	All	1065/1200 (88%)	0.11	65 (6%) 21 19	18, 33, 70, 101	0

All (65) RSRZ outliers are listed below:

Mol	Chain	Res	Type	RSRZ
1	D	148	GLY	6.2
1	B	5	SER	5.6
1	D	69	PRO	5.4
1	C	32	SER	5.2
1	D	4	THR	5.1
1	C	4	THR	5.0
1	A	73	ALA	4.9
1	B	175	PHE	4.9
1	A	281	VAL	4.5
1	A	32	SER	4.4
1	B	281	VAL	4.4
1	A	282	PRO	4.1
1	B	69	PRO	3.8
1	B	92	ALA	3.7
1	C	30	PRO	3.7
1	D	156	ALA	3.7
1	B	213	CYS	3.6
1	B	176	ALA	3.5
1	B	34	SER	3.5
1	C	33	PHE	3.5
1	B	180	ALA	3.4

Continued on next page...

Continued from previous page...

Mol	Chain	Res	Type	RSRZ
1	B	164	ALA	3.4
1	A	195	PHE	3.4
1	B	160	ASP	3.3
1	B	216	GLY	3.3
1	C	3	ASP	3.3
1	D	5	SER	3.2
1	B	182	ILE	3.1
1	B	282	PRO	3.0
1	B	157	PRO	3.0
1	A	33	PHE	3.0
1	B	12	GLY	2.9
1	D	161	ASP	2.7
1	D	175	PHE	2.7
1	D	282	PRO	2.6
1	A	92	ALA	2.5
1	B	179	MET	2.4
1	B	162	VAL	2.4
1	B	170	LEU	2.4
1	B	159	TYR	2.4
1	B	212	LEU	2.3
1	B	167	HIS	2.3
1	D	211	ARG	2.3
1	C	282	PRO	2.3
1	D	142	VAL	2.3
1	B	214	GLU	2.3
1	A	74	VAL	2.3
1	B	135	ALA	2.3
1	D	33	PHE	2.3
1	C	156	ALA	2.3
1	D	70	GLY	2.2
1	A	31	ASP	2.2
1	B	163	VAL	2.2
1	A	30	PRO	2.1
1	C	154	GLY	2.1
1	C	155	SER	2.1
1	D	119	ILE	2.1
1	C	31	ASP	2.1
1	B	227	ARG	2.1
1	D	67	THR	2.1
1	B	10	CYS	2.1
1	D	157	PRO	2.0
1	B	186	ARG	2.0

Continued on next page...

Continued from previous page...

Mol	Chain	Res	Type	RSRZ
1	A	39	HIS	2.0
1	B	32	SER	2.0

6.2 Non-standard residues in protein, DNA, RNA chains [i](#)

There are no non-standard protein/DNA/RNA residues in this entry.

6.3 Carbohydrates [i](#)

There are no carbohydrates in this entry.

6.4 Ligands [i](#)

In the following table, the Atoms column lists the number of modelled atoms in the group and the number defined in the chemical component dictionary. The B-factors column lists the minimum, median, 95th percentile and maximum values of B factors of atoms in the group. The column labelled 'Q<0.9' lists the number of atoms with occupancy less than 0.9.

Mol	Type	Chain	Res	Atoms	RSCC	RSR	B-factors(Å ²)	Q<0.9
2	PAB	D	403	10/10	0.60	0.39	45,65,69,69	0
4	GOL	D	402	6/6	0.69	0.20	57,61,62,63	0
4	GOL	C	402	6/6	0.71	0.22	59,59,60,62	0
4	GOL	C	403	6/6	0.79	0.13	65,66,66,66	0
2	PAB	B	402	10/10	0.83	0.16	69,70,70,70	0
2	PAB	C	401	10/10	0.83	0.18	55,55,58,58	0
2	PAB	B	403	10/10	0.83	0.27	81,82,83,83	0
2	PAB	A	402	10/10	0.84	0.16	63,64,66,66	0
3	SO4	B	405	5/5	0.86	0.32	107,107,108,108	0
2	PAB	B	401	10/10	0.89	0.20	48,56,59,59	0
2	PAB	A	401	10/10	0.91	0.14	55,55,56,56	0
2	PAB	D	401	10/10	0.92	0.16	37,45,47,48	0
3	SO4	A	403	5/5	0.92	0.13	100,100,100,100	0
3	SO4	B	404	5/5	0.95	0.11	72,72,73,73	0
3	SO4	D	404	5/5	0.96	0.09	63,65,66,66	0
3	SO4	A	404	5/5	0.97	0.08	58,58,59,59	0
3	SO4	C	404	5/5	0.97	0.07	54,55,56,56	0

6.5 Other polymers [i](#)

There are no such residues in this entry.