



Full wwPDB EM Validation Report ⓘ

Nov 6, 2022 – 08:00 PM EST

PDB ID : 6DBX
EMDB ID : EMD-7853
Title : Cryo-EM structure of RAG in complex with 12-RSS substrate DNA
Authors : Wu, H.; Liao, M.; Ru, H.; Mi, W.
Deposited on : 2018-05-03
Resolution : 4.20 Å(reported)

This is a Full wwPDB EM Validation Report for a publicly released PDB entry.

We welcome your comments at validation@mail.wwpdb.org

A user guide is available at

<https://www.wwpdb.org/validation/2017/EMValidationReportHelp>

with specific help available everywhere you see the ⓘ symbol.

The types of validation reports are described at

<http://www.wwpdb.org/validation/2017/FAQs#types>.

The following versions of software and data (see [references ⓘ](#)) were used in the production of this report:

EMDB validation analysis : 0.0.1.dev43
MolProbity : 4.02b-467
Percentile statistics : 20191225.v01 (using entries in the PDB archive December 25th 2019)
MapQ : 1.9.9
Ideal geometry (proteins) : Engh & Huber (2001)
Ideal geometry (DNA, RNA) : Parkinson et al. (1996)
Validation Pipeline (wwPDB-VP) : 2.31.2

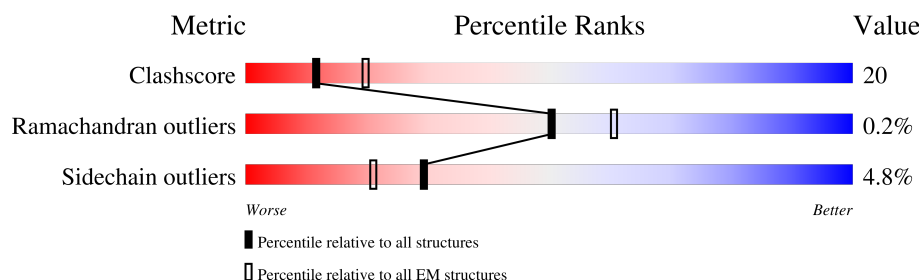
1 Overall quality at a glance

The following experimental techniques were used to determine the structure:

ELECTRON MICROSCOPY

The reported resolution of this entry is 4.20 Å.

Percentile scores (ranging between 0-100) for global validation metrics of the entry are shown in the following graphic. The table shows the number of entries on which the scores are based.



Metric	Whole archive (#Entries)	EM structures (#Entries)
Clashscore	158937	4297
Ramachandran outliers	154571	4023
Sidechain outliers	154315	3826

The table below summarises the geometric issues observed across the polymeric chains and their fit to the map. The red, orange, yellow and green segments of the bar indicate the fraction of residues that contain outliers for ≥ 3 , 2, 1 and 0 types of geometric quality criteria respectively. A grey segment represents the fraction of residues that are not modelled. The numeric value for each fraction is indicated below the corresponding segment, with a dot representing fractions $\leq 5\%$. The upper red bar (where present) indicates the fraction of residues that have poor fit to the EM map (all-atom inclusion $< 40\%$). The numeric value is given above the bar.

Mol	Chain	Length	Quality of chain
1	A	1159	 5% 29% 23% 47%
1	C	1159	 5% 33% 19% 47%
2	B	533	 33% 31% 34%
2	D	533	 5% 39% 26% 34%
3	E	50	 34% 32% 68%
4	F	50	 30% 22% 76%

2 Entry composition

There are 6 unique types of molecules in this entry. The entry contains 17436 atoms, of which 0 are hydrogens and 0 are deuteriums.

In the tables below, the AltConf column contains the number of residues with at least one atom in alternate conformation and the Trace column contains the number of residues modelled with at most 2 atoms.

- Molecule 1 is a protein called Recombination activating gene 1 - MBP chimera.

Mol	Chain	Residues	Atoms					AltConf	Trace
1	A	615	Total	C	N	O	S	0	0
			4966	3108	893	928	37		
1	C	615	Total	C	N	O	S	2	0
			4980	3116	898	929	37		

There are 68 discrepancies between the modelled and reference sequences:

Chain	Residue	Modelled	Actual	Comment	Reference
A	-127	MET	-	initiating methionine	UNP P0AEX9
A	-126	GLY	-	expression tag	UNP P0AEX9
A	-125	SER	-	expression tag	UNP P0AEX9
A	-124	SER	-	expression tag	UNP P0AEX9
A	-123	HIS	-	expression tag	UNP P0AEX9
A	-122	HIS	-	expression tag	UNP P0AEX9
A	-121	HIS	-	expression tag	UNP P0AEX9
A	-120	HIS	-	expression tag	UNP P0AEX9
A	-119	HIS	-	expression tag	UNP P0AEX9
A	-118	HIS	-	expression tag	UNP P0AEX9
A	-117	GLY	-	expression tag	UNP P0AEX9
A	-116	THR	-	expression tag	UNP P0AEX9
A	-115	LYS	-	expression tag	UNP P0AEX9
A	-114	THR	-	expression tag	UNP P0AEX9
A	251	GLY	-	linker	UNP P0AEX9
A	252	THR	-	linker	UNP P0AEX9
A	253	ASP	-	linker	UNP P0AEX9
A	254	TYR	-	linker	UNP P0AEX9
A	255	ASP	-	linker	UNP P0AEX9
A	256	ILE	-	linker	UNP P0AEX9
A	257	PRO	-	linker	UNP P0AEX9
A	258	THR	-	linker	UNP P0AEX9
A	259	THR	-	linker	UNP P0AEX9
A	260	LEU	-	linker	UNP P0AEX9
A	261	GLU	-	linker	UNP P0AEX9
A	262	VAL	-	linker	UNP P0AEX9

Continued on next page...

Continued from previous page...

Chain	Residue	Modelled	Actual	Comment	Reference
A	263	LEU	-	linker	UNP P0AEX9
A	264	PHE	-	linker	UNP P0AEX9
A	265	GLN	-	linker	UNP P0AEX9
A	266	GLY	-	linker	UNP P0AEX9
A	267	PRO	-	linker	UNP P0AEX9
A	268	LEU	-	linker	UNP P0AEX9
A	269	GLY	-	linker	UNP P0AEX9
A	270	SER	-	linker	UNP P0AEX9
C	-127	MET	-	initiating methionine	UNP P0AEX9
C	-126	GLY	-	expression tag	UNP P0AEX9
C	-125	SER	-	expression tag	UNP P0AEX9
C	-124	SER	-	expression tag	UNP P0AEX9
C	-123	HIS	-	expression tag	UNP P0AEX9
C	-122	HIS	-	expression tag	UNP P0AEX9
C	-121	HIS	-	expression tag	UNP P0AEX9
C	-120	HIS	-	expression tag	UNP P0AEX9
C	-119	HIS	-	expression tag	UNP P0AEX9
C	-118	HIS	-	expression tag	UNP P0AEX9
C	-117	GLY	-	expression tag	UNP P0AEX9
C	-116	THR	-	expression tag	UNP P0AEX9
C	-115	LYS	-	expression tag	UNP P0AEX9
C	-114	THR	-	expression tag	UNP P0AEX9
C	251	GLY	-	linker	UNP P0AEX9
C	252	THR	-	linker	UNP P0AEX9
C	253	ASP	-	linker	UNP P0AEX9
C	254	TYR	-	linker	UNP P0AEX9
C	255	ASP	-	linker	UNP P0AEX9
C	256	ILE	-	linker	UNP P0AEX9
C	257	PRO	-	linker	UNP P0AEX9
C	258	THR	-	linker	UNP P0AEX9
C	259	THR	-	linker	UNP P0AEX9
C	260	LEU	-	linker	UNP P0AEX9
C	261	GLU	-	linker	UNP P0AEX9
C	262	VAL	-	linker	UNP P0AEX9
C	263	LEU	-	linker	UNP P0AEX9
C	264	PHE	-	linker	UNP P0AEX9
C	265	GLN	-	linker	UNP P0AEX9
C	266	GLY	-	linker	UNP P0AEX9
C	267	PRO	-	linker	UNP P0AEX9
C	268	LEU	-	linker	UNP P0AEX9
C	269	GLY	-	linker	UNP P0AEX9
C	270	SER	-	linker	UNP P0AEX9

- Molecule 2 is a protein called Recombination activating gene 2.

Mol	Chain	Residues	Atoms					AltConf	Trace
2	B	351	Total	C	N	O	S	0	0
			2714	1716	470	509	19		
2	D	352	Total	C	N	O	S	0	0
			2720	1719	471	511	19		

There are 6 discrepancies between the modelled and reference sequences:

Chain	Residue	Modelled	Actual	Comment	Reference
B	-2	GLY	-	expression tag	UNP Q1RLW7
B	-1	GLY	-	expression tag	UNP Q1RLW7
B	0	SER	-	expression tag	UNP Q1RLW7
D	-2	GLY	-	expression tag	UNP Q1RLW7
D	-1	GLY	-	expression tag	UNP Q1RLW7
D	0	SER	-	expression tag	UNP Q1RLW7

- Molecule 3 is a DNA chain called Forward strand of 12-RSS substrate DNA.

Mol	Chain	Residues	Atoms					AltConf	Trace
3	E	50	Total	C	N	O	P	0	0
			1023	486	192	295	50		

- Molecule 4 is a DNA chain called Reverse strand of 12-RSS substrate DNA.

Mol	Chain	Residues	Atoms					AltConf	Trace
4	F	50	Total	C	N	O	P	0	0
			1027	489	183	305	50		

- Molecule 5 is ZINC ION (three-letter code: ZN) (formula: Zn).

Mol	Chain	Residues	Atoms		AltConf
5	A	1	Total	Zn	0
			1	1	
5	C	1	Total	Zn	0
			1	1	

- Molecule 6 is CALCIUM ION (three-letter code: CA) (formula: Ca).

Mol	Chain	Residues	Atoms		AltConf
6	A	2	Total	Ca	0
			2	2	

Continued on next page...

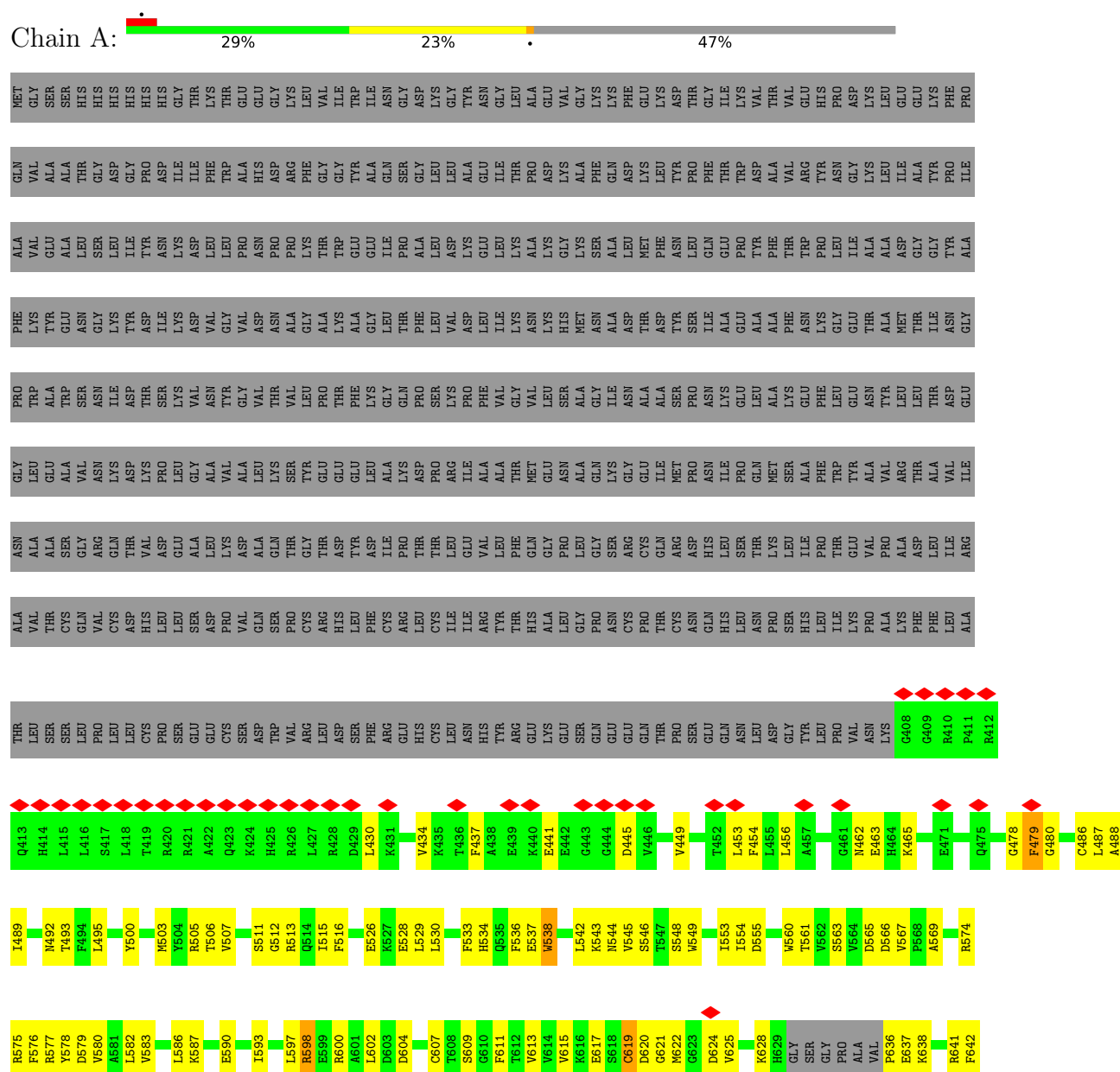
Continued from previous page...

Mol	Chain	Residues	Atoms		AltConf
6	C	2	Total	Ca	0
			2	2	

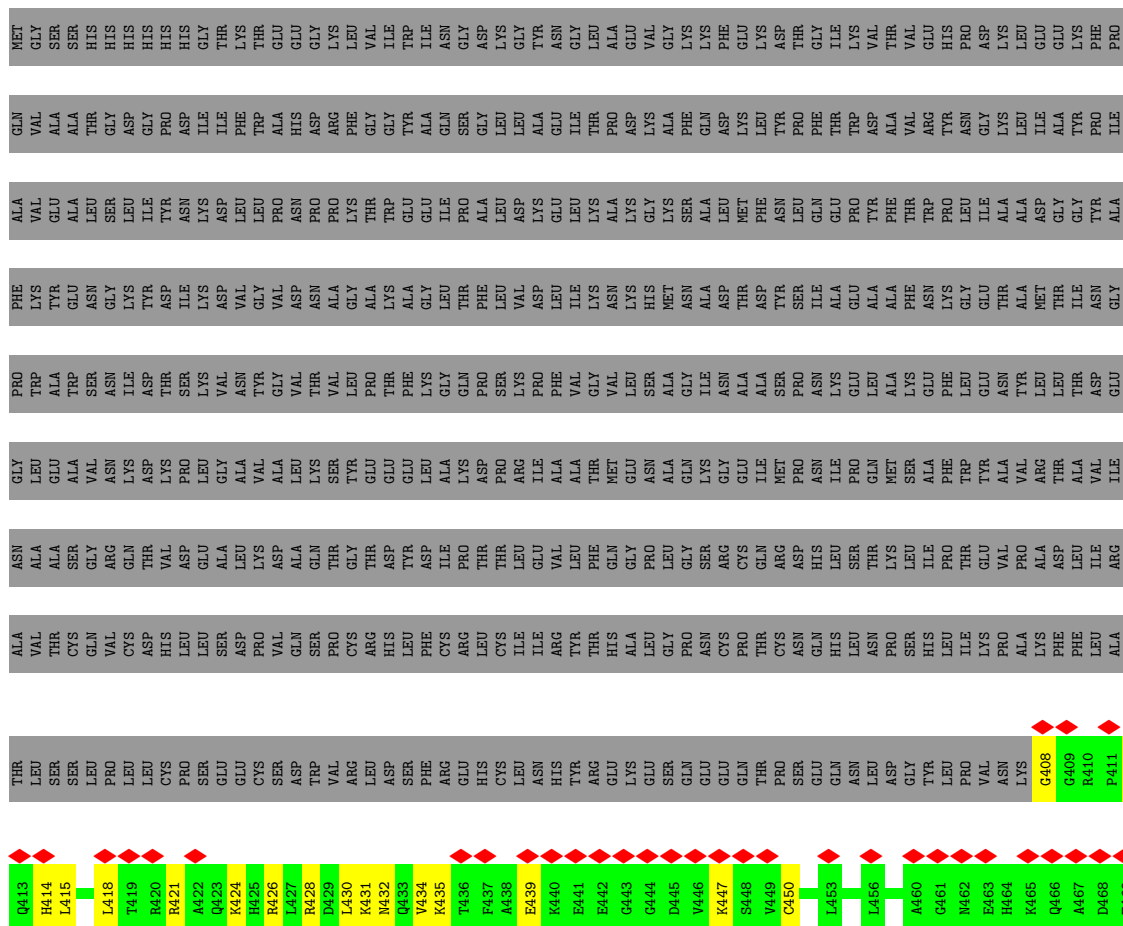
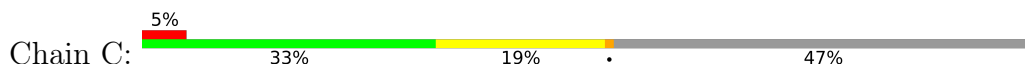
3 Residue-property plots

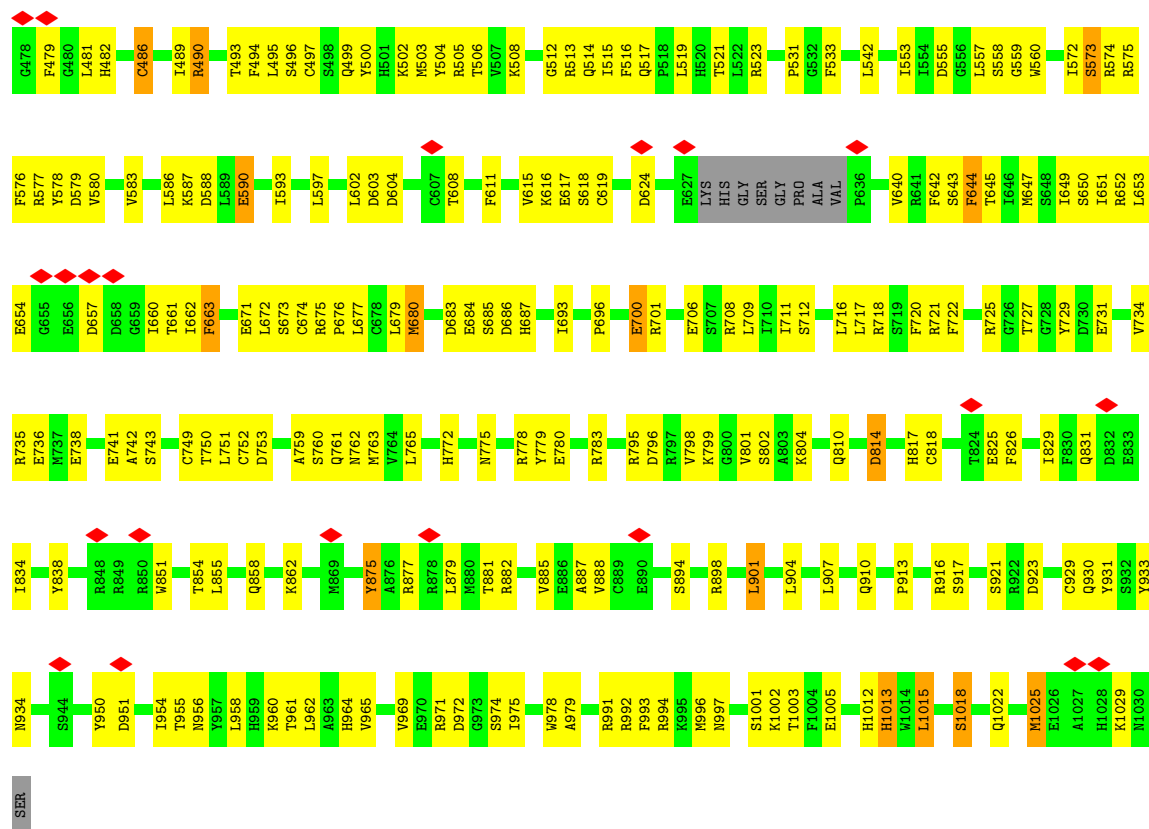
These plots are drawn for all protein, RNA, DNA and oligosaccharide chains in the entry. The first graphic for a chain summarises the proportions of the various outlier classes displayed in the second graphic. The second graphic shows the sequence view annotated by issues in geometry and atom inclusion in map density. Residues are color-coded according to the number of geometric quality criteria for which they contain at least one outlier: green = 0, yellow = 1, orange = 2 and red = 3 or more. A red diamond above a residue indicates a poor fit to the EM map for this residue (all-atom inclusion < 40%). Stretches of 2 or more consecutive residues without any outlier are shown as a green connector. Residues present in the sample, but not in the model, are shown in grey.

- Molecule 1: Recombination activating gene 1 - MBP chimera

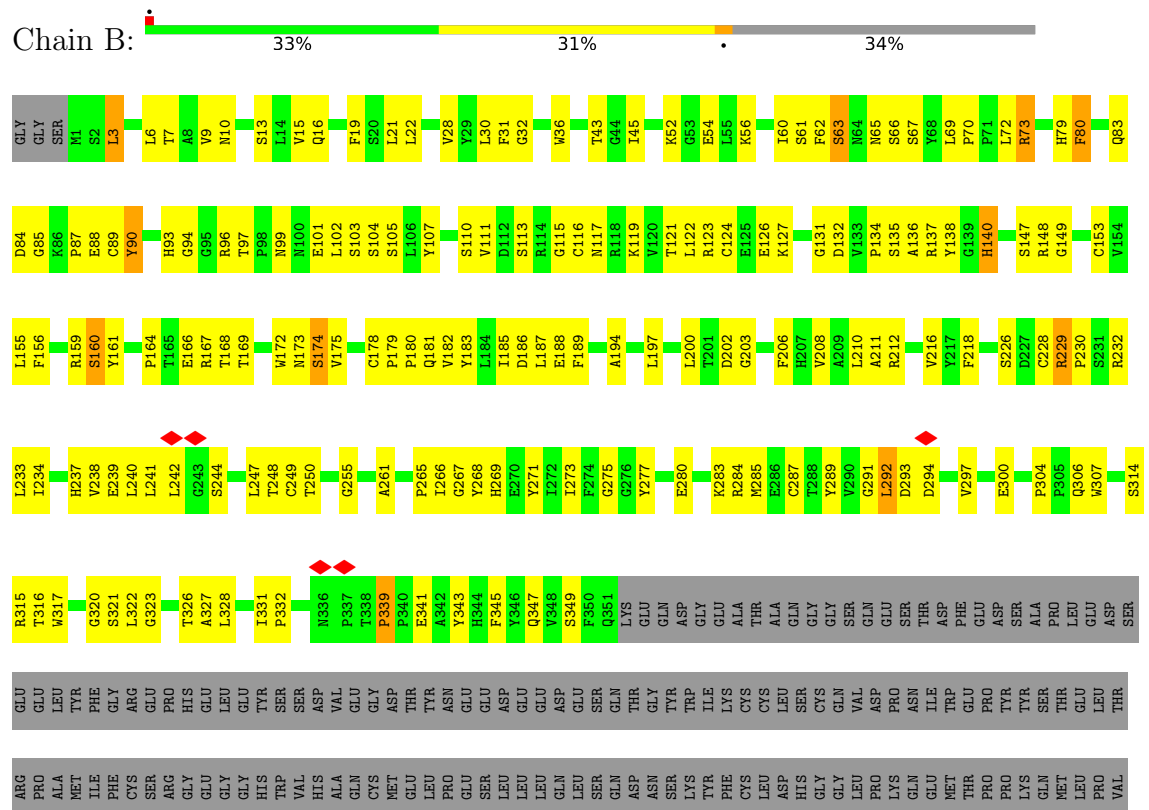


- Molecule 1: Recombination activating gene 1 - MBP chimera



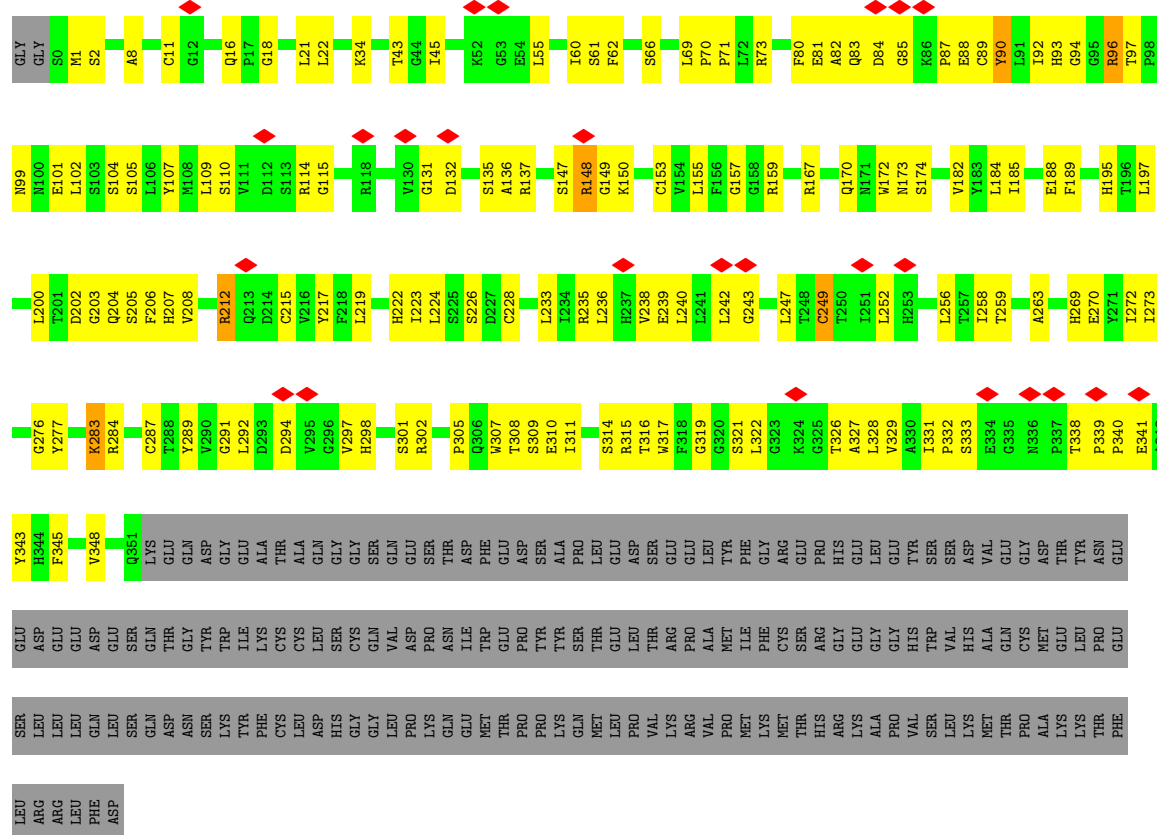


• Molecule 2: Recombination activating gene 2

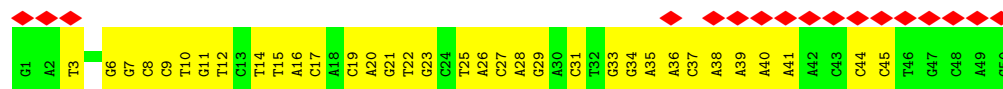


LYS ARG
VAL VAL
PRO MET
MET MET
THR THR
HIS ARG
LYS LYS
ALA PRO
VAL VAL
SER SER
LEU MET
LYS MET
THR THR
PRO PRO
ALA ALA
LYS LYS
THR THR
PHE PHE
LEU LEU
ARG ARG
LEU LEU
PHE PHE
ASP ASP

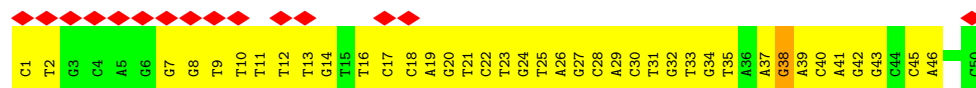
• Molecule 2: Recombination activating gene 2



• Molecule 3: Forward strand of 12-RSS substrate DNA



• Molecule 4: Reverse strand of 12-RSS substrate DNA



4 Experimental information

Property	Value	Source
EM reconstruction method	SINGLE PARTICLE	Depositor
Imposed symmetry	POINT, C1	Depositor
Number of particles used	62942	Depositor
Resolution determination method	FSC 0.143 CUT-OFF	Depositor
CTF correction method	PHASE FLIPPING AND AMPLITUDE CORRECTION	Depositor
Microscope	FEI TITAN KRIOS	Depositor
Voltage (kV)	300	Depositor
Electron dose ($e^-/\text{\AA}^2$)	47	Depositor
Minimum defocus (nm)	Not provided	
Maximum defocus (nm)	Not provided	
Magnification	Not provided	
Image detector	GATAN K2 SUMMIT (4k x 4k)	Depositor
Maximum map value	0.173	Depositor
Minimum map value	-0.089	Depositor
Average map value	-0.000	Depositor
Map value standard deviation	0.007	Depositor
Recommended contour level	0.03	Depositor
Map size (Å)	271.36, 271.36, 271.36	wwPDB
Map dimensions	256, 256, 256	wwPDB
Map angles (°)	90.0, 90.0, 90.0	wwPDB
Pixel spacing (Å)	1.06, 1.06, 1.06	Depositor

5 Model quality [i](#)

5.1 Standard geometry [i](#)

Bond lengths and bond angles in the following residue types are not validated in this section: CA, ZN

The Z score for a bond length (or angle) is the number of standard deviations the observed value is removed from the expected value. A bond length (or angle) with $|Z| > 5$ is considered an outlier worth inspection. RMSZ is the root-mean-square of all Z scores of the bond lengths (or angles).

Mol	Chain	Bond lengths		Bond angles	
		RMSZ	# $ Z > 5$	RMSZ	# $ Z > 5$
1	A	0.31	0/5062	0.50	0/6805
1	C	0.29	0/5081	0.49	1/6829 (0.0%)
2	B	0.29	0/2784	0.56	1/3784 (0.0%)
2	D	0.28	0/2790	0.53	0/3792
3	E	0.65	0/1148	0.99	0/1768
4	F	0.64	0/1150	1.05	1/1774 (0.1%)
All	All	0.36	0/18015	0.61	3/24752 (0.0%)

There are no bond length outliers.

All (3) bond angle outliers are listed below:

Mol	Chain	Res	Type	Atoms	Z	Observed(°)	Ideal(°)
1	C	901	LEU	CA-CB-CG	5.41	127.73	115.30
4	F	38	DG	O4'-C1'-N9	5.18	111.63	108.00
2	B	339	PRO	C-N-CD	-5.13	109.31	120.60

There are no chirality outliers.

There are no planarity outliers.

5.2 Too-close contacts [i](#)

In the following table, the Non-H and H(model) columns list the number of non-hydrogen atoms and hydrogen atoms in the chain respectively. The H(added) column lists the number of hydrogen atoms added and optimized by MolProbity. The Clashes column lists the number of clashes within the asymmetric unit, whereas Symm-Clashes lists symmetry-related clashes.

Mol	Chain	Non-H	H(model)	H(added)	Clashes	Symm-Clashes
1	A	4966	0	4922	238	0
1	C	4980	0	4948	161	0

Continued on next page...

Continued from previous page...

Mol	Chain	Non-H	H(model)	H(added)	Clashes	Symm-Clashes
2	B	2714	0	2665	135	0
2	D	2720	0	2670	102	0
3	E	1023	0	561	35	0
4	F	1027	0	566	39	0
5	A	1	0	0	0	0
5	C	1	0	0	0	0
6	A	2	0	0	0	0
6	C	2	0	0	0	0
All	All	17436	0	16332	666	0

The all-atom clashscore is defined as the number of clashes found per 1000 atoms (including hydrogen atoms). The all-atom clashscore for this structure is 20.

All (666) close contacts within the same asymmetric unit are listed below, sorted by their clash magnitude.

Atom-1	Atom-2	Interatomic distance (Å)	Clash overlap (Å)
1:C:875:TYR:O	1:C:879:LEU:HB2	1.46	1.15
2:D:338:THR:HG22	2:D:340:PRO:HA	1.23	1.11
2:B:208:VAL:HG21	2:B:261:ALA:HB3	1.46	0.98
1:A:959:HIS:O	1:A:963:ALA:HB2	1.70	0.91
1:A:834:ILE:HD11	1:A:855:LEU:HB2	1.54	0.88
1:A:992:ARG:HH12	3:E:21:DG:H5'	1.40	0.86
1:A:858:GLN:O	1:A:862:LYS:HE2	1.76	0.85
3:E:31:DC:O2	4:F:20:DG:N2	2.10	0.85
1:A:749:CYS:SG	1:A:750:THR:N	2.51	0.84
1:C:486:CYS:SG	1:C:500:TYR:OH	2.35	0.83
1:A:486:CYS:SG	1:A:500:TYR:OH	2.37	0.83
1:A:593:ILE:HD11	1:A:713:VAL:HG21	1.63	0.81
1:A:622:MET:HE1	1:A:641:ARG:HH11	1.45	0.81
1:C:418:LEU:HD11	1:C:426:ARG:HH11	1.45	0.81
1:A:858:GLN:HG3	1:A:862:LYS:HE3	1.61	0.80
1:A:495:LEU:HD21	1:C:495:LEU:HD21	1.63	0.80
1:A:959:HIS:O	1:A:963:ALA:CB	2.30	0.79
2:B:169:THR:HA	2:B:172:TRP:HB2	1.63	0.79
1:A:752:CYS:SG	1:A:753:ASP:N	2.56	0.78
2:B:322:LEU:H	2:B:327:ALA:HA	1.48	0.78
2:B:208:VAL:CG2	2:B:261:ALA:HB3	2.13	0.77
1:C:913:PRO:HA	1:C:916:ARG:HB2	1.66	0.77
1:A:863:MET:CE	1:A:863:MET:HA	2.14	0.77
2:D:338:THR:HG22	2:D:340:PRO:CA	2.10	0.77
1:C:731:GLU:OE2	1:C:735:ARG:NH1	2.17	0.77

Continued on next page...

Continued from previous page...

Atom-1	Atom-2	Interatomic distance (Å)	Clash overlap (Å)
1:C:760:SER:HB2	1:C:954:ILE:HD11	1.65	0.76
2:B:148:ARG:HH22	2:B:239:GLU:HB2	1.50	0.76
4:F:20:DG:H2''	4:F:21:DT:H5'	1.67	0.76
1:A:617:GLU:OE2	1:A:701:ARG:NH1	2.19	0.76
3:E:31:DC:N3	4:F:20:DG:N1	2.34	0.75
2:D:339:PRO:HB2	2:D:341:GLU:H	1.51	0.75
1:C:650:SER:HB3	1:C:661:THR:HA	1.69	0.75
1:A:771:SER:O	1:A:775:ASN:ND2	2.20	0.74
2:D:167:ARG:NH1	2:D:172:TRP:O	2.20	0.74
1:C:557:LEU:O	2:D:173:ASN:ND2	2.19	0.74
1:A:688:GLU:OE2	2:B:73:ARG:NH2	2.21	0.74
2:B:43:THR:HG22	2:B:45:ILE:H	1.50	0.74
1:C:716:LEU:HB2	1:C:718:ARG:HE	1.52	0.74
1:A:863:MET:HA	1:A:863:MET:HE2	1.70	0.73
2:D:328:LEU:HD11	2:D:345:PHE:HD2	1.54	0.72
1:A:955:THR:HB	1:A:958:LEU:HD23	1.71	0.72
2:B:314:SER:OG	2:B:316:THR:O	2.08	0.72
1:A:998:ALA:HB1	1:A:1000:GLN:HB3	1.70	0.72
1:C:778:ARG:NH1	1:C:798:VAL:O	2.23	0.71
1:C:858:GLN:NE2	1:C:887:ALA:O	2.23	0.70
1:C:587:LYS:NZ	1:C:712:SER:O	2.24	0.70
2:D:272:ILE:HD11	2:D:287:CYS:HB3	1.73	0.70
1:A:609:SER:HB3	1:A:653:LEU:HD11	1.73	0.70
1:C:930:GLN:O	1:C:934:ASN:ND2	2.25	0.70
2:D:217:TYR:OH	2:D:235:ARG:NH2	2.26	0.69
1:A:864:LYS:O	1:A:878:ARG:NH1	2.25	0.69
2:B:104:SER:HB3	2:B:136:ALA:HB2	1.75	0.69
3:E:21:DG:H2'	3:E:22:DT:H71	1.75	0.69
1:A:817:HIS:O	1:A:819:ASP:N	2.26	0.69
1:A:641:ARG:NH1	1:A:987:ASN:OD1	2.26	0.68
2:D:73:ARG:HH21	2:D:96:ARG:HD2	1.59	0.68
1:C:421:ARG:NH2	4:F:14:DG:O6	2.26	0.68
1:A:814:ASP:OD1	1:A:816:LEU:N	2.26	0.68
1:A:712:SER:HA	1:A:717:LEU:HA	1.74	0.68
2:D:69:LEU:HD12	2:D:70:PRO:HD2	1.74	0.68
1:C:994:ARG:NH2	1:C:1005:GLU:OE1	2.27	0.67
3:E:20:DA:H2''	3:E:21:DG:C8	2.29	0.67
1:A:453:LEU:HD11	1:C:430:LEU:HD23	1.76	0.67
1:A:913:PRO:O	1:A:917:SER:OG	2.13	0.67
1:C:575:ARG:NH1	1:C:576:PHE:O	2.28	0.67
1:A:553:ILE:HG12	1:A:576:PHE:HE1	1.59	0.67

Continued on next page...

Continued from previous page...

Atom-1	Atom-2	Interatomic distance (Å)	Clash overlap (Å)
1:C:709:LEU:HB3	1:C:720:PHE:HB2	1.75	0.67
1:A:487:LEU:HD21	1:A:1015:LEU:HD21	1.76	0.66
1:A:984:GLU:OE1	1:A:987:ASN:ND2	2.25	0.66
1:C:572:ILE:HD13	1:C:1002:LYS:HB3	1.76	0.66
4:F:18:DC:H2'	4:F:19:DA:C8	2.31	0.66
1:A:613:VAL:HG23	1:A:649:ILE:HD13	1.78	0.65
1:A:434:VAL:HG22	1:C:430:LEU:HD21	1.79	0.65
1:C:749:CYS:SG	1:C:752:CYS:N	2.70	0.65
1:A:993:PHE:CE1	1:A:1012:HIS:HB3	2.32	0.65
2:B:135:SER:OG	2:B:137:ARG:NH2	2.28	0.65
1:C:672:LEU:O	1:C:1022:GLN:NE2	2.30	0.65
1:C:741:GLU:OE1	1:C:795:ARG:NH1	2.25	0.65
1:A:651:ILE:HG22	1:A:660:ILE:HB	1.80	0.64
2:B:9:VAL:HG11	2:B:56:LYS:HG3	1.79	0.64
2:D:157:GLY:HA3	2:D:207:HIS:HE1	1.61	0.64
4:F:25:DT:H2''	4:F:26:DA:C8	2.32	0.64
1:A:749:CYS:SG	1:A:751:LEU:N	2.63	0.64
1:A:883:GLU:OE1	1:A:883:GLU:N	2.26	0.64
4:F:42:DG:H1'	4:F:43:DG:C8	2.33	0.64
1:A:858:GLN:O	1:A:862:LYS:CE	2.44	0.64
1:A:479:PHE:HD1	1:A:480:GLY:H	1.46	0.63
4:F:31:DT:H2''	4:F:32:DG:C8	2.33	0.63
1:A:652:ARG:NH1	1:A:657:ASP:OD1	2.28	0.63
1:A:858:GLN:NE2	1:A:890:GLU:OE1	2.31	0.63
2:B:127:LYS:NZ	2:B:188:GLU:OE1	2.31	0.63
1:C:780:GLU:OE1	1:C:783:ARG:NH1	2.32	0.63
2:D:102:LEU:HB2	2:D:136:ALA:HB1	1.81	0.63
1:A:969:VAL:O	1:A:973:GLY:N	2.32	0.62
3:E:35:DA:H2''	3:E:36:DA:C8	2.34	0.62
1:A:566:ASP:OD2	2:B:138:TYR:OH	2.15	0.62
1:A:575:ARG:NH1	1:A:576:PHE:O	2.30	0.62
1:A:676:PRO:HG3	1:A:1013:HIS:CD2	2.34	0.62
2:B:271:TYR:HB3	2:B:273:ILE:HD11	1.82	0.62
2:B:289:TYR:HD2	2:B:300:GLU:HB3	1.64	0.62
1:C:616:LYS:NZ	1:C:979:ALA:O	2.22	0.62
1:C:858:GLN:HE21	1:C:888:VAL:HA	1.65	0.62
2:B:339:PRO:HB2	2:B:341:GLU:H	1.64	0.61
1:A:817:HIS:C	1:A:819:ASP:H	2.02	0.61
2:B:160:SER:OG	2:B:161:TYR:N	2.31	0.61
1:A:620:ASP:OD1	1:A:621:GLY:N	2.34	0.61
1:C:428:ARG:O	1:C:432:ASN:ND2	2.33	0.61

Continued on next page...

Continued from previous page...

Atom-1	Atom-2	Interatomic distance (Å)	Clash overlap (Å)
2:B:331:ILE:O	2:B:343:TYR:HA	2.00	0.61
1:C:553:ILE:HG13	1:C:576:PHE:HE1	1.66	0.60
1:C:650:SER:HA	1:C:662:ILE:HG13	1.83	0.60
1:A:1027:ALA:HB2	1:C:505:ARG:HH21	1.66	0.60
2:B:113:SER:N	2:B:121:THR:OG1	2.33	0.60
1:C:578:TYR:HB3	1:C:700:GLU:HG2	1.83	0.60
2:D:202:ASP:OD1	2:D:203:GLY:N	2.34	0.60
1:A:492:ASN:ND2	1:A:1025:MET:SD	2.74	0.60
1:A:538:TRP:CE3	1:A:709:LEU:HD13	2.36	0.60
1:A:609:SER:O	1:A:719:SER:OG	2.19	0.60
1:A:748:ILE:HD13	1:A:756:ARG:HD2	1.81	0.60
3:E:34:DG:H2''	3:E:35:DA:C8	2.36	0.60
2:B:249:CYS:SG	2:B:250:THR:N	2.74	0.60
1:A:872:ASN:OD1	1:A:874:ASN:N	2.35	0.60
2:B:277:TYR:HA	2:B:284:ARG:H	1.67	0.59
2:D:310:GLU:O	2:D:314:SER:N	2.35	0.59
1:A:870:ARG:HB2	4:F:37:DA:H4'	1.84	0.59
2:D:236:LEU:HA	2:D:249:CYS:HA	1.83	0.59
1:A:762:ASN:HD21	1:A:765:LEU:HB3	1.67	0.59
1:A:992:ARG:NH2	3:E:21:DG:OP2	2.35	0.59
1:A:652:ARG:NH1	1:A:656:GLU:O	2.35	0.59
1:A:858:GLN:CG	1:A:862:LYS:HE3	2.33	0.59
3:E:20:DA:H2''	3:E:21:DG:H8	1.65	0.59
1:A:456:LEU:HD13	1:C:424:LYS:HG2	1.84	0.59
1:A:555:ASP:HA	1:A:574:ARG:HD3	1.84	0.59
2:B:237:HIS:HB3	2:B:248:THR:HG23	1.84	0.59
2:B:238:VAL:HG12	2:B:247:LEU:HG	1.84	0.59
2:B:97:THR:OG1	2:B:99:ASN:O	2.16	0.59
2:B:66:SER:HB3	2:B:123:ARG:HA	1.85	0.58
2:D:212:ARG:HB2	2:D:269:HIS:CD2	2.38	0.58
1:C:559:GLY:O	2:D:174:SER:OG	2.18	0.58
1:C:741:GLU:OE2	1:C:795:ARG:NE	2.37	0.58
1:A:538:TRP:HD1	1:A:707:SER:HG	1.51	0.58
2:D:316:THR:HG23	2:D:332:PRO:HG3	1.86	0.58
2:B:9:VAL:HG13	2:B:10:ASN:H	1.66	0.58
2:B:127:LYS:HZ1	2:B:188:GLU:HB2	1.69	0.58
4:F:7:DG:H2'	4:F:8:DG:H8	1.67	0.58
1:A:656:GLU:HG2	1:A:657:ASP:H	1.69	0.58
1:A:819:ASP:HA	1:A:822:ASN:ND2	2.19	0.58
2:D:204:GLN:HB3	2:D:223:ILE:HG12	1.86	0.58
1:A:682:VAL:HG12	1:A:683:ASP:H	1.67	0.58

Continued on next page...

Continued from previous page...

Atom-1	Atom-2	Interatomic distance (Å)	Clash overlap (Å)
2:B:148:ARG:NH1	2:B:240:LEU:O	2.36	0.58
1:A:810:GLN:NE2	1:A:971:ARG:HD3	2.19	0.58
2:D:43:THR:HG22	2:D:45:ILE:H	1.68	0.57
1:C:971:ARG:NH2	1:C:972:ASP:OD1	2.37	0.57
1:C:851:TRP:HA	1:C:854:THR:HG22	1.86	0.57
1:C:643:SER:OG	1:C:674:CYS:SG	2.61	0.57
1:A:834:ILE:CD1	1:A:855:LEU:HB2	2.29	0.57
1:A:865:LEU:HD11	1:A:878:ARG:HB3	1.86	0.57
1:A:681:PHE:HE1	1:A:1006:LEU:HD21	1.69	0.57
2:B:202:ASP:H	2:B:232:ARG:HH12	1.52	0.56
1:C:603:ASP:OD1	1:C:604:ASP:N	2.38	0.56
1:A:538:TRP:CZ3	1:A:709:LEU:HD13	2.41	0.56
1:A:999:ARG:HB3	1:A:1000:GLN:HA	1.86	0.56
2:B:63:SER:O	2:B:66:SER:OG	2.23	0.56
2:B:137:ARG:NH1	2:B:178:CYS:SG	2.78	0.56
2:D:99:ASN:O	2:D:101:GLU:N	2.39	0.56
1:A:869:MET:HG3	1:A:870:ARG:HG2	1.87	0.56
1:C:588:ASP:OD2	1:C:1018:SER:OG	2.18	0.56
4:F:13:DT:H4'	4:F:14:DG:OP1	2.06	0.56
4:F:17:DC:H2''	4:F:18:DC:C6	2.41	0.56
1:A:506:THR:HG21	1:C:489:ILE:HG12	1.87	0.56
1:C:752:CYS:SG	1:C:753:ASP:N	2.79	0.56
3:E:22:DT:H2''	3:E:23:DG:C8	2.41	0.56
4:F:20:DG:H2'	4:F:21:DT:C6	2.41	0.56
1:C:814:ASP:OD2	1:C:817:HIS:N	2.36	0.56
2:B:153:CYS:N	2:B:185:ILE:O	2.38	0.56
1:C:907:LEU:HA	1:C:910:GLN:HG3	1.87	0.56
1:A:565:ASP:N	1:A:565:ASP:OD1	2.39	0.55
2:B:102:LEU:HD11	2:B:161:TYR:HE2	1.71	0.55
1:A:816:LEU:HD13	1:A:981:GLU:HG3	1.88	0.55
1:A:534:HIS:CD2	1:A:587:LYS:HG2	2.41	0.55
1:C:762:ASN:HD21	1:C:765:LEU:HB3	1.70	0.55
1:A:737:MET:N	1:A:737:MET:SD	2.79	0.55
1:A:566:ASP:OD2	2:B:96:ARG:NH1	2.39	0.55
2:B:323:GLY:O	2:B:326:THR:OG1	2.23	0.55
1:C:617:GLU:OE2	1:C:701:ARG:NH1	2.39	0.55
2:D:1:MET:HB2	2:D:305:PRO:HG3	1.88	0.55
1:A:534:HIS:CE1	1:A:587:LYS:HG2	2.42	0.55
1:A:534:HIS:CG	1:A:587:LYS:HG2	2.42	0.55
2:B:102:LEU:HD11	2:B:161:TYR:CE2	2.41	0.55
1:A:951:ASP:OD1	1:A:951:ASP:N	2.38	0.55

Continued on next page...

Continued from previous page...

Atom-1	Atom-2	Interatomic distance (Å)	Clash overlap (Å)
2:D:155:LEU:HD23	2:D:185:ILE:HD11	1.89	0.55
2:B:226:SER:OG	2:B:228:CYS:SG	2.48	0.54
1:C:997:ASN:OD1	1:C:1012:HIS:NE2	2.40	0.54
1:A:441:GLU:O	1:C:412:ARG:NH1	2.39	0.54
1:A:465:LYS:HD2	1:C:479:PHE:CZ	2.42	0.54
1:A:600:ARG:HG3	1:A:602:LEU:HD13	1.88	0.54
3:E:25:DT:H2'	3:E:26:DA:C8	2.41	0.54
1:C:750:THR:H	1:C:960:LYS:NZ	2.05	0.54
2:D:16:GLN:HB3	2:D:34:LYS:HB2	1.89	0.54
4:F:11:DT:C6	4:F:12:DT:H72	2.43	0.54
1:C:597:LEU:HD13	1:C:602:LEU:HB3	1.87	0.54
2:B:306:GLN:OE1	2:B:306:GLN:N	2.37	0.54
1:A:671:GLU:HB3	1:A:985:SER:HB3	1.90	0.54
2:D:97:THR:OG1	2:D:99:ASN:O	2.16	0.54
1:A:530:LEU:HD11	1:A:1011:LYS:HG3	1.88	0.53
1:A:625:VAL:HG11	1:A:990:PHE:HE1	1.72	0.53
1:A:746:THR:O	1:A:755:THR:HA	2.08	0.53
1:A:831:GLN:NE2	1:A:848:ARG:O	2.41	0.53
1:A:839:GLN:N	1:A:839:GLN:OE1	2.41	0.53
1:A:511:SER:O	1:A:513:ARG:N	2.42	0.53
2:B:16:GLN:NE2	2:B:32:GLY:O	2.31	0.53
3:E:44:DC:H4'	3:E:45:DC:OP1	2.09	0.53
1:C:725:ARG:NH1	1:C:810:GLN:OE1	2.41	0.53
3:E:41:DA:C8	3:E:41:DA:H5'	2.43	0.53
1:A:992:ARG:NH1	3:E:21:DG:H5'	2.17	0.53
1:A:577:ARG:NH2	1:A:579:ASP:OD2	2.41	0.53
1:C:687:HIS:HD2	1:C:736:GLU:HG2	1.74	0.53
1:A:911:MET:HG3	1:A:915:TRP:HZ3	1.74	0.53
2:B:153:CYS:HB2	2:B:185:ILE:HB	1.91	0.53
2:D:159:ARG:NH1	2:D:205:SER:OG	2.42	0.53
2:D:322:LEU:H	2:D:327:ALA:HA	1.74	0.53
4:F:7:DG:H2'	4:F:8:DG:C8	2.43	0.53
1:C:956:ASN:O	1:C:960:LYS:HG2	2.09	0.53
3:E:11:DG:H1'	3:E:12:DT:H5'	1.91	0.53
1:A:912:LYS:HA	1:A:915:TRP:CH2	2.44	0.53
1:A:538:TRP:CD2	1:A:709:LEU:HD13	2.45	0.52
1:A:789:GLU:OE2	1:A:797:ARG:NH1	2.37	0.52
2:B:164:PRO:HA	2:B:167:ARG:HB2	1.91	0.52
2:B:322:LEU:HB2	2:B:327:ALA:HA	1.92	0.52
1:C:504:TYR:OH	1:C:514:GLN:OE1	2.20	0.52
1:C:578:TYR:OH	1:C:617:GLU:OE1	2.27	0.52

Continued on next page...

Continued from previous page...

Atom-1	Atom-2	Interatomic distance (Å)	Clash overlap (Å)
1:C:676:PRO:HG3	1:C:1013:HIS:HB3	1.90	0.52
1:C:778:ARG:NH1	1:C:799:LYS:HB2	2.24	0.52
1:A:701:ARG:HD3	1:A:724:PHE:CD2	2.45	0.52
1:A:740:LEU:HD11	1:A:770:ARG:HH12	1.73	0.52
2:B:62:PHE:CE1	2:B:122:LEU:HB2	2.45	0.52
3:E:10:DT:H2''	3:E:11:DG:C8	2.45	0.52
1:A:919:CYS:O	1:A:923:ASP:N	2.40	0.52
1:A:1006:LEU:HA	1:A:1009:ILE:HB	1.92	0.52
1:C:825:GLU:OE2	1:C:950:TYR:OH	2.26	0.52
1:C:729:TYR:HB2	1:C:734:VAL:HG22	1.92	0.52
1:C:751:LEU:HD12	1:C:964:HIS:CD2	2.45	0.52
2:D:105:SER:OG	2:D:107:TYR:CE2	2.61	0.52
4:F:1:DC:H3'	4:F:2:DT:H71	1.91	0.52
2:B:328:LEU:HD11	2:B:345:PHE:CD1	2.45	0.52
1:A:445:ASP:OD2	1:C:414:HIS:NE2	2.43	0.52
2:B:60:ILE:HG22	2:B:61:SER:H	1.75	0.52
1:C:862:LYS:HD2	1:C:887:ALA:HB1	1.92	0.52
2:D:82:ALA:HB1	2:D:87:PRO:HB3	1.91	0.52
2:B:70:PRO:HG2	2:B:72:LEU:HD21	1.91	0.51
1:C:490:ARG:NH1	1:C:497:CYS:SG	2.83	0.51
1:C:738:GLU:OE2	1:C:775:ASN:ND2	2.36	0.51
1:C:649:ILE:HG22	1:C:663:PHE:HD2	1.75	0.51
1:C:798:VAL:HG13	1:C:801:VAL:H	1.75	0.51
1:A:449:VAL:HG22	1:C:415:LEU:HD22	1.92	0.51
1:A:730:ASP:OD1	1:A:730:ASP:N	2.43	0.51
2:B:230:PRO:HB2	2:B:232:ARG:HG2	1.93	0.51
2:B:326:THR:HG22	2:B:349:SER:HB3	1.93	0.51
1:C:558:SER:HB3	2:D:173:ASN:ND2	2.25	0.51
1:C:651:ILE:HG23	1:C:660:ILE:HB	1.93	0.51
1:A:554:ILE:HG22	1:A:555:ASP:O	2.11	0.51
4:F:23:DT:H2''	4:F:24:DG:C8	2.45	0.51
1:A:487:LEU:HD22	1:A:526:GLU:HB2	1.92	0.51
1:C:683:ASP:OD1	1:C:684:GLU:N	2.43	0.51
1:C:930:GLN:OE1	1:C:933:TYR:HB3	2.11	0.51
1:C:553:ILE:HD12	1:C:553:ILE:H	1.76	0.51
2:D:135:SER:OG	2:D:137:ARG:NH2	2.44	0.51
2:D:289:TYR:HB2	2:D:302:ARG:HD3	1.93	0.51
2:B:266:ILE:HG13	2:B:267:GLY:H	1.76	0.50
1:C:418:LEU:HD11	1:C:426:ARG:NH1	2.22	0.50
1:C:435:LYS:NZ	1:C:439:GLU:OE2	2.36	0.50
1:C:645:THR:OG1	1:C:674:CYS:HA	2.11	0.50

Continued on next page...

Continued from previous page...

Atom-1	Atom-2	Interatomic distance (Å)	Clash overlap (Å)
2:D:182:VAL:O	2:D:195:HIS:N	2.36	0.50
1:A:676:PRO:HD2	1:A:1017:THR:HG21	1.93	0.50
1:C:650:SER:HA	1:C:662:ILE:H	1.76	0.50
1:A:729:TYR:HB2	1:A:734:VAL:HG22	1.93	0.50
2:B:166:GLU:O	2:B:168:THR:OG1	2.28	0.50
2:D:197:LEU:HD13	2:D:249:CYS:SG	2.51	0.50
1:A:757:ALA:O	1:A:760:SER:N	2.43	0.50
2:B:84:ASP:CG	2:B:85:GLY:HA2	2.32	0.50
2:D:321:SER:HA	2:D:327:ALA:HA	1.93	0.50
2:D:328:LEU:HD11	2:D:345:PHE:CD2	2.41	0.50
3:E:34:DG:N2	4:F:16:DT:O2	2.45	0.50
2:D:331:ILE:O	2:D:343:TYR:HA	2.12	0.50
1:A:675:ARG:NE	1:A:1017:THR:O	2.45	0.50
2:B:19:PHE:HB2	2:B:31:PHE:O	2.11	0.50
1:C:772:HIS:HA	1:C:775:ASN:ND2	2.26	0.50
1:A:437:PHE:CD2	1:C:430:LEU:HD22	2.46	0.50
1:A:544:ASN:O	1:A:544:ASN:ND2	2.45	0.50
1:C:579:ASP:N	1:C:700:GLU:OE1	2.37	0.50
1:C:996:MET:O	1:C:997:ASN:ND2	2.45	0.50
2:D:277:TYR:HA	2:D:283:LYS:HA	1.93	0.50
3:E:6:DG:H1'	3:E:7:DG:H5'	1.94	0.50
1:C:955:THR:HG23	1:C:958:LEU:HB2	1.94	0.50
1:A:478:GLY:O	1:C:513[B]:ARG:NH1	2.41	0.49
1:A:727:THR:HG21	1:A:978:TRP:HB3	1.93	0.49
1:A:881:THR:O	1:A:885:VAL:HG23	2.12	0.49
2:B:229:ARG:HH12	2:B:280:GLU:CD	2.15	0.49
1:C:651:ILE:HB	1:C:662:ILE:HD11	1.94	0.49
1:C:965:VAL:O	1:C:969:VAL:HG22	2.13	0.49
1:A:619:CYS:HB2	1:A:642:PHE:CD2	2.46	0.49
2:D:159:ARG:NH1	2:D:206:PHE:CD2	2.81	0.49
1:A:780:GLU:OE1	1:A:783:ARG:NH2	2.37	0.49
2:B:116:CYS:SG	2:B:117:ASN:N	2.85	0.49
1:C:590:GLU:HA	1:C:593:ILE:HG22	1.93	0.49
2:D:226:SER:OG	2:D:228:CYS:SG	2.68	0.49
4:F:31:DT:H2''	4:F:32:DG:N7	2.27	0.49
1:A:536:PHE:HB3	1:A:711:ILE:CD1	2.42	0.49
1:A:598:ARG:NH2	1:A:604:ASP:OD1	2.45	0.49
1:C:517:GLN:HB3	1:C:521:THR:HG21	1.95	0.49
2:D:104:SER:HB2	2:D:136:ALA:HA	1.94	0.49
2:D:114:ARG:HB2	2:D:115:GLY:HA2	1.94	0.49
4:F:40:DC:H2''	4:F:41:DA:C8	2.48	0.49

Continued on next page...

Continued from previous page...

Atom-1	Atom-2	Interatomic distance (Å)	Clash overlap (Å)
1:A:538:TRP:HD1	1:A:707:SER:OG	1.95	0.49
1:A:696:PRO:O	1:A:700:GLU:HG2	2.12	0.49
1:A:743:SER:O	1:A:745:SER:N	2.42	0.49
2:B:28:VAL:HG11	2:B:322:LEU:HD22	1.95	0.49
2:B:265:PRO:HB3	2:B:271:TYR:CE2	2.48	0.49
2:B:289:TYR:CD2	2:B:300:GLU:HB3	2.46	0.49
1:C:894:SER:O	1:C:898:ARG:NE	2.46	0.49
1:A:479:PHE:HA	1:A:513:ARG:HH21	1.76	0.49
1:A:889:CYS:HA	1:A:892:VAL:HG12	1.95	0.48
2:B:211:ALA:HB2	2:B:216:VAL:HG13	1.95	0.48
2:B:229:ARG:HH22	2:B:280:GLU:HG3	1.78	0.48
1:A:771:SER:HB2	1:A:774:GLU:HG2	1.94	0.48
1:C:706:GLU:N	1:C:706:GLU:OE1	2.46	0.48
1:C:727:THR:HG21	1:C:978:TRP:HB3	1.95	0.48
1:A:488:ALA:O	1:A:492:ASN:HB2	2.13	0.48
1:C:931:TYR:OH	1:C:961:THR:O	2.30	0.48
1:A:836:GLU:OE1	1:A:839:GLN:NE2	2.40	0.48
2:B:6:LEU:HD21	2:B:347:GLN:HB2	1.94	0.48
1:C:826:PHE:O	1:C:829:ILE:HG22	2.13	0.48
1:C:958:LEU:O	1:C:962:LEU:HG	2.13	0.48
2:D:322:LEU:N	2:D:326:THR:O	2.46	0.48
2:B:135:SER:H	2:B:137:ARG:HH21	1.60	0.48
1:C:693:ILE:O	1:C:696:PRO:HD2	2.13	0.48
2:D:292:LEU:HA	2:D:297:VAL:HA	1.95	0.48
1:A:713:VAL:HG13	1:A:718:ARG:HD2	1.94	0.48
2:B:134:PRO:HB3	2:B:183:TYR:CD2	2.49	0.48
1:A:658:ASP:OD1	1:A:658:ASP:N	2.45	0.48
1:A:779:TYR:CE2	1:A:804:LYS:HB2	2.48	0.48
1:A:816:LEU:HB2	1:A:981:GLU:HB2	1.93	0.48
1:A:974:SER:OG	1:A:975:ILE:N	2.46	0.48
2:B:179:PRO:HB2	2:B:181:GLN:OE1	2.12	0.48
2:D:339:PRO:HB2	2:D:341:GLU:N	2.25	0.48
2:B:131:GLY:HA3	2:B:132:ASP:C	2.34	0.48
1:C:759:ALA:O	1:C:763:MET:HG2	2.14	0.48
2:B:140:HIS:HD1	2:B:140:HIS:H	1.62	0.48
1:A:489:ILE:HD13	1:C:506:THR:HG21	1.96	0.47
1:A:865:LEU:HG	1:A:878:ARG:HD2	1.94	0.47
1:A:987:ASN:O	1:A:991:ARG:HG2	2.14	0.47
1:A:999:ARG:HG2	1:A:1004:PHE:HB2	1.95	0.47
1:C:687:HIS:CD2	1:C:736:GLU:HG2	2.49	0.47
2:D:90:TYR:N	2:D:109:LEU:O	2.47	0.47

Continued on next page...

Continued from previous page...

Atom-1	Atom-2	Interatomic distance (Å)	Clash overlap (Å)
1:A:430:LEU:HD11	1:C:434:VAL:HG22	1.96	0.47
1:A:622:MET:HE1	1:A:641:ARG:NH1	2.23	0.47
1:C:619:CYS:HB3	1:C:642:PHE:HA	1.96	0.47
3:E:27:DC:H2''	3:E:28:DA:C8	2.49	0.47
1:A:486:CYS:O	1:A:489:ILE:HG22	2.13	0.47
1:C:493:THR:OG1	1:C:493:THR:O	2.32	0.47
3:E:38:DA:H2''	3:E:39:DA:H8	1.78	0.47
1:A:582:LEU:HD21	1:A:615:VAL:HG21	1.95	0.47
1:A:653:LEU:HA	1:A:654:GLU:HA	1.54	0.47
1:C:608:THR:HA	1:C:611:PHE:HE1	1.78	0.47
2:D:45:ILE:HG22	2:D:60:ILE:HG13	1.97	0.47
4:F:28:DC:H2''	4:F:29:DA:C8	2.49	0.47
1:A:752:CYS:HB3	1:A:959:HIS:CE1	2.49	0.47
1:C:675:ARG:NH2	1:C:1018:SER:HA	2.29	0.47
1:A:683:ASP:OD1	1:A:684:GLU:N	2.47	0.47
2:B:89:CYS:SG	2:B:110:SER:HB2	2.55	0.47
2:D:80:PHE:HB3	2:D:89:CYS:HB2	1.95	0.47
4:F:34:DG:C2	4:F:35:DT:C2	3.01	0.47
4:F:38:DG:H2''	4:F:39:DA:N7	2.29	0.47
2:D:93:HIS:HA	2:D:94:GLY:HA2	1.70	0.47
2:D:238:VAL:HG12	2:D:247:LEU:HB2	1.96	0.47
2:D:242:LEU:HA	2:D:243:GLY:HA2	1.52	0.47
2:D:316:THR:OG1	2:D:317:TRP:N	2.48	0.47
1:A:561:THR:C	1:A:563:SER:H	2.18	0.47
1:C:881:THR:O	1:C:885:VAL:HG23	2.14	0.47
3:E:27:DC:OP2	3:E:27:DC:H2''	2.15	0.47
2:B:174:SER:OG	2:B:175:VAL:N	2.48	0.47
2:D:8:ALA:HB2	2:D:55:LEU:HD23	1.96	0.47
1:A:489:ILE:HD11	1:C:503:MET:HA	1.97	0.46
1:A:740:LEU:HD11	1:A:770:ARG:NH1	2.30	0.46
1:A:861:LYS:HB3	1:A:862:LYS:NZ	2.29	0.46
1:C:686:ASP:OD1	1:C:686:ASP:N	2.48	0.46
3:E:33:DG:H2''	3:E:34:DG:N7	2.30	0.46
1:A:693:ILE:O	1:A:696:PRO:HD2	2.16	0.46
1:A:803:ALA:HB1	2:B:36:TRP:CD2	2.50	0.46
1:A:830:PHE:CE2	1:A:888:VAL:HG11	2.49	0.46
2:B:103:SER:HG	2:B:105:SER:HG	1.54	0.46
1:C:831:GLN:HG3	1:C:855:LEU:HD23	1.97	0.46
3:E:31:DC:N4	4:F:20:DG:O6	2.48	0.46
1:A:624:ASP:HA	1:A:637:GLU:HB3	1.96	0.46
1:C:913:PRO:O	1:C:917:SER:OG	2.19	0.46

Continued on next page...

Continued from previous page...

Atom-1	Atom-2	Interatomic distance (Å)	Clash overlap (Å)
2:D:147:SER:C	2:D:148:ARG:HG3	2.35	0.46
1:A:676:PRO:HG3	1:A:1013:HIS:CG	2.51	0.46
2:D:308:THR:HG22	2:D:309:SER:H	1.80	0.46
2:B:69:LEU:HA	2:B:69:LEU:HD12	1.39	0.46
3:E:14:DT:H2''	3:E:15:DT:H71	1.97	0.46
3:E:28:DA:H2''	3:E:29:DG:C8	2.50	0.46
1:A:817:HIS:C	1:A:819:ASP:N	2.68	0.46
2:B:93:HIS:HA	2:B:94:GLY:HA2	1.70	0.46
2:B:180:PRO:HB3	2:B:203:GLY:HA3	1.96	0.46
1:C:580:VAL:HA	1:C:583:VAL:HG22	1.97	0.46
3:E:39:DA:C6	3:E:40:DA:C6	3.04	0.46
4:F:10:DT:H2'	4:F:11:DT:H71	1.98	0.46
2:B:287:CYS:SG	2:B:304:PRO:HA	2.55	0.46
1:C:877:ARG:HH21	1:C:916:ARG:NH2	2.13	0.46
1:A:528:GLU:HG3	1:A:533:PHE:CE2	2.51	0.46
1:A:681:PHE:CE1	1:A:1006:LEU:HD21	2.50	0.46
2:B:132:ASP:OD2	2:B:194:ALA:N	2.43	0.46
2:B:218:PHE:O	2:B:233:LEU:HG	2.15	0.46
2:B:292:LEU:HD23	2:B:292:LEU:N	2.31	0.46
1:C:555:ASP:N	1:C:555:ASP:OD1	2.47	0.46
2:D:87:PRO:HA	2:D:88:GLU:HA	1.65	0.46
2:D:188:GLU:HA	2:D:189:PHE:HA	1.79	0.46
2:D:256:LEU:HD21	2:D:284:ARG:HH12	1.81	0.46
1:A:597:LEU:HD11	1:A:607:CYS:SG	2.56	0.45
1:A:590:GLU:O	1:A:593:ILE:HG12	2.16	0.45
2:B:277:TYR:OH	2:B:317:TRP:N	2.41	0.45
1:C:574:ARG:NH2	1:C:1003:THR:O	2.49	0.45
1:A:493:THR:OG1	1:C:499:GLN:OE1	2.17	0.45
2:B:339:PRO:HB2	2:B:341:GLU:N	2.29	0.45
1:C:834:ILE:HD12	1:C:855:LEU:HB2	1.97	0.45
1:A:747:TYR:OH	1:A:796:ASP:HA	2.17	0.45
2:B:3:LEU:HD21	2:B:307:TRP:HA	1.97	0.45
2:B:283:LYS:H	2:B:283:LYS:HG2	1.56	0.45
1:C:652:ARG:NH1	1:C:657:ASP:O	2.49	0.45
2:D:8:ALA:HA	2:D:55:LEU:HB3	1.99	0.45
1:A:479:PHE:HD1	1:A:480:GLY:N	2.12	0.45
1:A:645:THR:OG1	1:A:674:CYS:HA	2.16	0.45
1:A:984:GLU:O	1:A:987:ASN:ND2	2.49	0.45
2:D:294:ASP:OD1	2:D:294:ASP:N	2.49	0.45
4:F:42:DG:C4	4:F:43:DG:C5	3.04	0.45
1:A:818:CYS:O	1:A:822:ASN:ND2	2.50	0.45

Continued on next page...

Continued from previous page...

Atom-1	Atom-2	Interatomic distance (Å)	Clash overlap (Å)
1:A:989:LEU:HD11	1:A:1016:TYR:HE2	1.81	0.45
1:C:750:THR:OG1	1:C:960:LYS:NZ	2.49	0.45
2:D:84:ASP:HA	2:D:85:GLY:HA2	1.61	0.45
1:A:462:ASN:ND2	4:F:20:DG:H21	2.15	0.45
2:B:6:LEU:HD11	2:B:347:GLN:HB2	1.98	0.45
2:B:202:ASP:O	2:B:232:ARG:NH1	2.50	0.45
2:B:291:GLY:C	2:B:292:LEU:HD23	2.36	0.45
2:D:222:HIS:HE2	2:D:224:LEU:HD12	1.82	0.45
1:A:503:MET:O	1:A:507:VAL:HG12	2.17	0.45
1:A:728:GLY:HA2	1:A:980:SER:HB2	1.99	0.45
2:B:289:TYR:HB3	2:B:300:GLU:OE1	2.17	0.45
2:D:62:PHE:HB3	2:D:66:SER:OG	2.17	0.45
1:A:465:LYS:HD2	1:C:479:PHE:HZ	1.80	0.45
1:A:892:VAL:HG13	1:A:898:ARG:HG2	1.98	0.45
1:A:972:ASP:OD2	1:A:974:SER:N	2.49	0.45
2:B:69:LEU:HD11	2:B:107:TYR:CD2	2.52	0.45
1:A:931:TYR:CE2	1:A:966:PRO:HD3	2.52	0.45
2:B:62:PHE:HB3	2:B:66:SER:OG	2.17	0.45
1:C:578:TYR:HA	1:C:677:LEU:HD11	1.99	0.45
1:C:951:ASP:OD1	1:C:951:ASP:N	2.50	0.45
2:D:259:THR:OG1	2:D:277:TYR:O	2.35	0.45
1:A:638:LYS:NZ	1:A:683:ASP:OD1	2.49	0.44
1:C:494:PHE:CE2	1:C:992:ARG:HG2	2.52	0.44
1:A:752:CYS:SG	1:A:754:SER:N	2.85	0.44
1:A:871:MET:SD	1:A:871:MET:N	2.89	0.44
2:B:148:ARG:N	2:B:149:GLY:HA2	2.32	0.44
1:C:577:ARG:HD2	2:D:170:GLN:HE21	1.82	0.44
1:C:1001:SER:OG	4:F:30:DC:H4'	2.17	0.44
2:D:131:GLY:HA3	2:D:132:ASP:C	2.37	0.44
2:D:148:ARG:N	2:D:149:GLY:HA2	2.33	0.44
3:E:7:DG:C5	3:E:8:DC:C4	3.05	0.44
1:A:912:LYS:HA	1:A:915:TRP:CZ3	2.53	0.44
2:B:69:LEU:HD11	2:B:107:TYR:CE2	2.52	0.44
2:B:241:LEU:O	2:B:244:SER:N	2.50	0.44
2:B:265:PRO:HB3	2:B:271:TYR:CZ	2.53	0.44
2:D:258:ILE:HG22	2:D:284:ARG:HD3	1.99	0.44
1:C:778:ARG:HH12	1:C:799:LYS:HB2	1.82	0.44
2:D:21:LEU:HD13	2:D:322:LEU:HD23	1.99	0.44
2:D:283:LYS:HE2	2:D:317:TRP:HE1	1.82	0.44
1:A:901:LEU:HA	1:A:904:LEU:HB3	1.98	0.44
1:C:640:VAL:HG22	1:C:684:GLU:HG2	1.98	0.44

Continued on next page...

Continued from previous page...

Atom-1	Atom-2	Interatomic distance (Å)	Clash overlap (Å)
2:B:316:THR:OG1	2:B:332:PRO:HG3	2.17	0.44
2:B:67:SER:OG	2:B:124:CYS:O	2.17	0.44
2:B:127:LYS:NZ	2:B:187:LEU:O	2.50	0.44
1:C:721:ARG:HG2	1:C:722:PHE:H	1.83	0.44
2:D:270:GLU:OE1	2:D:289:TYR:OH	2.36	0.44
1:A:538:TRP:CH2	1:A:709:LEU:HD22	2.53	0.44
2:B:110:SER:OG	2:B:111:VAL:N	2.51	0.44
2:B:115:GLY:HA2	2:B:119:LYS:O	2.18	0.44
1:C:519:LEU:HD23	1:C:519:LEU:HA	1.75	0.44
2:D:291:GLY:N	2:D:298:HIS:O	2.46	0.44
1:A:495:LEU:HA	1:A:495:LEU:HD23	1.52	0.43
1:A:560:TRP:HZ2	1:A:692:ALA:HB1	1.83	0.43
2:B:87:PRO:HA	2:B:88:GLU:HA	1.63	0.43
1:C:907:LEU:HD23	1:C:910:GLN:HG3	1.99	0.43
1:C:1001:SER:O	1:C:1005:GLU:HG3	2.18	0.43
3:E:33:DG:H2"	3:E:34:DG:C8	2.53	0.43
1:C:481:LEU:HD23	1:C:482:HIS:H	1.83	0.43
2:D:259:THR:O	2:D:276:GLY:HA3	2.18	0.43
1:A:463:GLU:OE1	1:C:447:LYS:NZ	2.34	0.43
2:B:52:LYS:HE2	2:B:54:GLU:OE2	2.19	0.43
2:B:69:LEU:HD11	2:B:107:TYR:CZ	2.54	0.43
2:B:99:ASN:O	2:B:101:GLU:N	2.46	0.43
2:D:1:MET:SD	2:D:1:MET:N	2.91	0.43
1:A:515:ILE:HG22	1:A:516:PHE:CD1	2.53	0.43
1:C:742:ALA:HA	1:C:743:SER:HA	1.67	0.43
1:A:820:ILE:O	1:A:824:THR:HG22	2.17	0.43
1:A:861:LYS:HB3	1:A:862:LYS:HZ1	1.83	0.43
1:A:893:PRO:O	1:A:898:ARG:NH2	2.52	0.43
1:A:943:SER:O	1:A:947:LYS:HB2	2.18	0.43
1:C:481:LEU:HD22	1:C:515:ILE:HG22	2.01	0.43
1:C:573:SER:HB2	1:C:680:MET:HG2	2.01	0.43
3:E:36:DA:H2"	3:E:37:DC:OP2	2.18	0.43
2:B:159:ARG:CZ	2:B:206:PHE:HE1	2.32	0.43
1:C:708:ARG:HA	1:C:708:ARG:HD3	1.71	0.43
4:F:41:DA:H2"	4:F:42:DG:C8	2.53	0.43
1:A:855:LEU:O	1:A:859:LEU:HG	2.19	0.43
2:B:156:PHE:HD1	2:B:182:VAL:HG12	1.84	0.43
2:B:210:LEU:HD11	2:B:271:TYR:CD2	2.53	0.43
2:B:269:HIS:O	2:B:292:LEU:HD21	2.19	0.43
1:A:560:TRP:CE3	1:A:569:ALA:HA	2.54	0.43
1:A:895:GLU:HA	1:A:898:ARG:HD2	2.01	0.43

Continued on next page...

Continued from previous page...

Atom-1	Atom-2	Interatomic distance (Å)	Clash overlap (Å)
2:B:210:LEU:HD23	2:B:210:LEU:HA	1.76	0.43
1:C:408:GLY:N	4:F:8:DG:H21	2.16	0.43
1:C:683:ASP:OD1	1:C:685:SER:N	2.50	0.43
1:A:580:VAL:HA	1:A:583:VAL:HG22	2.01	0.43
2:B:69:LEU:HD11	2:B:107:TYR:CE1	2.54	0.43
1:C:1015:LEU:HD23	1:C:1015:LEU:HA	1.74	0.43
3:E:19:DC:H1'	3:E:20:DA:C8	2.54	0.43
1:A:546:SER:HB3	1:A:577:ARG:NH1	2.34	0.42
1:A:611:PHE:CD2	1:A:649:ILE:HD11	2.54	0.42
1:A:817:HIS:HB2	1:A:957:TYR:HE2	1.83	0.42
2:B:7:THR:OG1	2:B:54:GLU:OE1	2.37	0.42
2:B:69:LEU:HD11	2:B:107:TYR:CD1	2.54	0.42
1:C:586:LEU:HD12	1:C:586:LEU:HA	1.63	0.42
1:C:779:TYR:CE2	1:C:804:LYS:HB2	2.54	0.42
2:D:150:LYS:HD3	2:D:240:LEU:HB3	2.01	0.42
2:D:184:LEU:HD12	2:D:195:HIS:NE2	2.34	0.42
2:D:319:GLY:HA3	2:D:329:VAL:HA	2.00	0.42
4:F:1:DC:H2'	4:F:2:DT:C6	2.53	0.42
4:F:28:DC:H2''	4:F:29:DA:H8	1.83	0.42
1:A:505:ARG:HD2	1:C:1029:LYS:HG3	1.99	0.42
1:A:560:TRP:CD1	2:B:173:ASN:HB3	2.54	0.42
1:C:901:LEU:HA	1:C:904:LEU:HB3	2.01	0.42
2:D:2:SER:O	2:D:348:VAL:HA	2.18	0.42
2:D:147:SER:OG	2:D:239:GLU:HA	2.19	0.42
4:F:26:DA:H2''	4:F:27:DG:H8	1.82	0.42
1:A:948:TYR:CE2	1:A:949:ARG:HB2	2.54	0.42
2:B:107:TYR:CE1	2:B:126:GLU:HB2	2.54	0.42
1:C:523:ARG:HD3	1:C:523:ARG:HA	1.84	0.42
1:C:611:PHE:CZ	1:C:718:ARG:HD3	2.54	0.42
2:D:314:SER:OG	2:D:315:ARG:N	2.52	0.42
3:E:3:DT:H6	3:E:3:DT:H5'	1.84	0.42
1:A:651:ILE:HD12	1:A:651:ILE:HA	1.81	0.42
2:B:284:ARG:HG3	2:B:285:MET:N	2.34	0.42
1:C:647:MET:HG3	1:C:978:TRP:CZ3	2.54	0.42
1:C:671:GLU:O	1:C:673:SER:N	2.52	0.42
1:A:542:LEU:HD13	1:A:545:VAL:HG11	2.01	0.42
2:B:242:LEU:HA	2:B:244:SER:H	1.84	0.42
2:D:182:VAL:N	2:D:195:HIS:O	2.52	0.42
2:D:283:LYS:HG3	2:D:317:TRP:HE1	1.84	0.42
1:A:579:ASP:OD1	1:A:580:VAL:N	2.51	0.42
2:B:186:ASP:OD1	2:B:187:LEU:N	2.53	0.42

Continued on next page...

Continued from previous page...

Atom-1	Atom-2	Interatomic distance (Å)	Clash overlap (Å)
2:D:89:CYS:HA	2:D:110:SER:HB2	2.01	0.42
1:A:566:ASP:OD1	1:A:567:VAL:N	2.43	0.42
1:A:604:ASP:HA	1:A:607:CYS:SG	2.60	0.42
1:A:622:MET:HE3	1:A:622:MET:HB2	1.94	0.42
1:A:751:LEU:HD13	1:A:768:ILE:HD11	2.01	0.42
1:A:865:LEU:HA	1:A:865:LEU:HD23	1.73	0.42
2:B:110:SER:O	2:B:122:LEU:HB3	2.19	0.42
2:D:60:ILE:HG22	2:D:61:SER:H	1.85	0.42
2:D:81:GLU:OE1	2:D:83:GLN:HB3	2.19	0.42
4:F:45:DC:H2''	4:F:46:DA:C8	2.55	0.42
1:A:543:LYS:O	1:A:545:VAL:HG23	2.20	0.42
1:A:586:LEU:HD12	1:A:586:LEU:HA	1.75	0.42
1:A:730:ASP:O	1:A:734:VAL:HG23	2.19	0.42
2:D:135:SER:O	2:D:137:ARG:NH1	2.52	0.42
2:D:197:LEU:HB2	2:D:200:LEU:HD22	2.01	0.42
4:F:22:DC:H1'	4:F:23:DT:O4'	2.20	0.42
1:A:598:ARG:HA	1:A:598:ARG:HD3	1.63	0.42
1:A:675:ARG:H	1:A:675:ARG:HG2	1.67	0.42
1:A:709:LEU:HD12	1:A:710:ILE:H	1.85	0.42
1:A:908:TYR:O	1:A:911:MET:HG2	2.18	0.42
2:B:69:LEU:HD11	2:B:107:TYR:CG	2.54	0.42
1:C:653:LEU:HA	1:C:654:GLU:HA	1.71	0.42
2:D:301:SER:OG	2:D:302:ARG:N	2.53	0.42
1:A:529:LEU:HA	1:A:529:LEU:HD23	1.84	0.42
1:A:536:PHE:HB3	1:A:711:ILE:HD11	2.01	0.42
1:A:506:THR:HG21	1:C:1025:MET:HE3	2.01	0.41
1:A:752:CYS:HB3	1:A:959:HIS:HE1	1.84	0.41
1:A:770:ARG:HD3	1:A:770:ARG:HA	1.85	0.41
2:B:232:ARG:HB2	2:B:234:ILE:HD11	2.02	0.41
1:C:725:ARG:HD2	1:C:978:TRP:CH2	2.54	0.41
2:D:153:CYS:O	2:D:185:ILE:HB	2.20	0.41
1:C:597:LEU:HD12	1:C:603:ASP:O	2.20	0.41
2:D:291:GLY:O	2:D:298:HIS:N	2.39	0.41
4:F:32:DG:H2''	4:F:33:DT:H5'	2.00	0.41
1:A:773:ASP:OD1	1:A:773:ASP:N	2.53	0.41
1:A:825:GLU:OE2	1:A:950:TYR:OH	2.20	0.41
2:B:22:LEU:HD23	2:B:90:TYR:CD2	2.56	0.41
2:B:277:TYR:HH	2:B:317:TRP:H	1.63	0.41
1:C:974:SER:OG	1:C:975:ILE:N	2.53	0.41
2:B:210:LEU:HD21	2:B:271:TYR:CE2	2.56	0.41
2:B:261:ALA:HA	2:B:275:GLY:HA2	2.02	0.41

Continued on next page...

Continued from previous page...

Atom-1	Atom-2	Interatomic distance (Å)	Clash overlap (Å)
1:A:742:ALA:HA	1:A:743:SER:HA	1.67	0.41
1:A:755:THR:HG23	1:A:758:GLU:OE2	2.20	0.41
1:A:819:ASP:O	1:A:823:ALA:N	2.37	0.41
1:A:989:LEU:HD11	1:A:1016:TYR:CE2	2.55	0.41
1:C:508:LYS:HD2	1:C:514:GLN:HB3	2.02	0.41
1:C:679:LEU:C	1:C:680:MET:HG3	2.39	0.41
1:A:548:SER:OG	1:A:549:TRP:N	2.52	0.41
1:A:837:VAL:HG11	1:A:948:TYR:CE2	2.56	0.41
1:A:897:ARG:H	1:A:897:ARG:HG2	1.57	0.41
2:B:15:VAL:HG22	2:B:30:LEU:HD11	2.02	0.41
2:B:155:LEU:HD22	2:B:183:TYR:CD2	2.54	0.41
2:B:292:LEU:HA	2:B:297:VAL:HA	2.02	0.41
2:D:62:PHE:HD2	2:D:66:SER:HB2	1.85	0.41
2:D:135:SER:N	2:D:137:ARG:HH12	2.19	0.41
3:E:8:DC:H2''	3:E:9:DC:C5	2.55	0.41
1:A:489:ILE:O	1:A:493:THR:HG22	2.21	0.41
1:A:753:ASP:HB3	1:A:799:LYS:HG3	2.03	0.41
1:A:819:ASP:HA	1:A:822:ASN:HD22	1.85	0.41
2:D:263:ALA:HA	2:D:273:ILE:HD12	2.02	0.41
1:A:779:TYR:CZ	1:A:804:LYS:HB2	2.56	0.41
2:B:21:LEU:HD23	2:B:30:LEU:HA	2.03	0.41
2:B:62:PHE:CD1	2:B:122:LEU:HB2	2.56	0.41
2:B:80:PHE:CE2	2:B:187:LEU:HD21	2.55	0.41
2:B:247:LEU:HD23	2:B:248:THR:N	2.36	0.41
1:C:504:TYR:HE1	1:C:516:PHE:O	2.04	0.41
1:C:711:ILE:O	1:C:717:LEU:HA	2.20	0.41
1:C:717:LEU:HD12	1:C:717:LEU:O	2.21	0.41
2:D:259:THR:OG1	2:D:277:TYR:HB2	2.21	0.41
3:E:41:DA:H5'	3:E:41:DA:H8	1.86	0.41
1:A:454:PHE:HD1	1:C:450:CYS:HG	1.68	0.41
2:B:21:LEU:HD12	2:B:320:GLY:HA3	2.02	0.41
2:B:155:LEU:HD22	2:B:183:TYR:HD2	1.85	0.41
2:B:293:ASP:OD1	2:B:294:ASP:N	2.48	0.41
2:B:322:LEU:HD23	2:B:322:LEU:HA	1.77	0.41
1:C:531:PRO:HG2	1:C:576:PHE:CD1	2.56	0.41
1:C:615:VAL:HG13	1:C:644:PHE:HD2	1.86	0.41
2:D:16:GLN:HG3	2:D:18:GLY:O	2.21	0.41
2:D:307:TRP:HB3	2:D:311:ILE:HG23	2.02	0.41
3:E:16:DA:H8	3:E:16:DA:P	2.43	0.41
4:F:27:DG:C4	4:F:28:DC:C5	3.08	0.41
1:A:538:TRP:CH2	1:A:709:LEU:HD13	2.56	0.41

Continued on next page...

Continued from previous page...

Atom-1	Atom-2	Interatomic distance (Å)	Clash overlap (Å)
1:A:653:LEU:HA	1:A:653:LEU:HD23	1.90	0.41
1:A:814:ASP:OD1	1:A:815:ALA:N	2.54	0.41
1:A:868:VAL:HA	3:E:17:DC:OP1	2.21	0.41
1:C:617:GLU:HA	1:C:644:PHE:HA	2.03	0.41
1:C:618:SER:HA	1:C:729:TYR:CE1	2.55	0.41
1:A:537:GLU:HG2	1:A:538:TRP:H	1.86	0.40
2:B:233:LEU:HB2	2:B:255:GLY:HA3	2.02	0.40
2:D:70:PRO:HA	2:D:71:PRO:HD3	1.84	0.40
2:D:208:VAL:O	2:D:219:LEU:HB2	2.20	0.40
4:F:9:DT:H2'	4:F:10:DT:C6	2.56	0.40
2:B:188:GLU:HA	2:B:189:PHE:HA	1.83	0.40
2:B:197:LEU:H	2:B:200:LEU:HD22	1.85	0.40
2:D:217:TYR:CD1	2:D:235:ARG:HB2	2.57	0.40
1:A:728:GLY:CA	1:A:980:SER:HB2	2.51	0.40
1:A:870:ARG:HD2	4:F:37:DA:O4'	2.22	0.40
1:A:963:ALA:HB1	1:A:964:HIS:CE1	2.57	0.40
2:B:83:GLN:N	2:B:87:PRO:HB3	2.37	0.40
1:A:578:TYR:HA	1:A:677:LEU:HD11	2.03	0.40
1:A:636:PRO:HA	1:A:681:PHE:CE2	2.57	0.40
1:C:578:TYR:HB3	1:C:700:GLU:CG	2.50	0.40
2:D:1:MET:HE2	2:D:302:ARG:HG2	2.03	0.40
1:A:831:GLN:CD	1:A:852:ARG:HB2	2.42	0.40
2:B:183:TYR:HD1	2:B:194:ALA:HA	1.86	0.40
1:C:583:VAL:HG12	1:C:709:LEU:HD21	2.04	0.40
2:D:22:LEU:HD11	2:D:92:ILE:HD11	2.03	0.40
2:D:233:LEU:HD22	2:D:252:LEU:HD22	2.04	0.40

There are no symmetry-related clashes.

5.3 Torsion angles [i](#)

5.3.1 Protein backbone [i](#)

In the following table, the Percentiles column shows the percent Ramachandran outliers of the chain as a percentile score with respect to all PDB entries followed by that with respect to all EM entries.

The Analysed column shows the number of residues for which the backbone conformation was analysed, and the total number of residues.

Mol	Chain	Analysed	Favoured	Allowed	Outliers	Percentiles	
1	A	611/1159 (53%)	534 (87%)	75 (12%)	2 (0%)	41	76
1	C	613/1159 (53%)	533 (87%)	79 (13%)	1 (0%)	47	80
2	B	349/533 (66%)	302 (86%)	47 (14%)	0	100	100
2	D	350/533 (66%)	322 (92%)	28 (8%)	0	100	100
All	All	1923/3384 (57%)	1691 (88%)	229 (12%)	3 (0%)	50	80

All (3) Ramachandran outliers are listed below:

Mol	Chain	Res	Type
1	A	818	CYS
1	A	512	GLY
1	C	512	GLY

5.3.2 Protein sidechains ⓘ

In the following table, the Percentiles column shows the percent sidechain outliers of the chain as a percentile score with respect to all PDB entries followed by that with respect to all EM entries.

The Analysed column shows the number of residues for which the sidechain conformation was analysed, and the total number of residues.

Mol	Chain	Analysed	Rotameric	Outliers	Percentiles	
1	A	544/1000 (54%)	522 (96%)	22 (4%)	31	57
1	C	546/1000 (55%)	514 (94%)	32 (6%)	19	47
2	B	303/465 (65%)	285 (94%)	18 (6%)	19	47
2	D	304/465 (65%)	295 (97%)	9 (3%)	41	63
All	All	1697/2930 (58%)	1616 (95%)	81 (5%)	29	52

All (81) residues with a non-rotameric sidechain are listed below:

Mol	Chain	Res	Type
1	A	479	PHE
1	A	538	TRP
1	A	598	ARG
1	A	619	CYS
1	A	628	LYS
1	A	644	PHE
1	A	657	ASP
1	A	671	GLU

Continued on next page...

Continued from previous page...

Mol	Chain	Res	Type
1	A	719	SER
1	A	737	MET
1	A	756	ARG
1	A	818	CYS
1	A	838	TYR
1	A	845	ARG
1	A	897	ARG
1	A	922	ARG
1	A	970	GLU
1	A	974	SER
1	A	988	LYS
1	A	993	PHE
1	A	999	ARG
1	A	1013	HIS
2	B	3	LEU
2	B	13	SER
2	B	63	SER
2	B	65	ASN
2	B	73	ARG
2	B	79	HIS
2	B	80	PHE
2	B	90	TYR
2	B	140	HIS
2	B	147	SER
2	B	160	SER
2	B	174	SER
2	B	212	ARG
2	B	229	ARG
2	B	268	TYR
2	B	292	LEU
2	B	315	ARG
2	B	321	SER
1	C	431	LYS
1	C	486	CYS
1	C	490	ARG
1	C	496	SER
1	C	502	LYS
1	C	533	PHE
1	C	542	LEU
1	C	560	TRP
1	C	573	SER
1	C	590	GLU

Continued on next page...

Continued from previous page...

Mol	Chain	Res	Type
1	C	624	ASP
1	C	644	PHE
1	C	663	PHE
1	C	680	MET
1	C	700	GLU
1	C	761	GLN
1	C	796	ASP
1	C	802	SER
1	C	814	ASP
1	C	818	CYS
1	C	838	TYR
1	C	875	TYR
1	C	882	ARG
1	C	921	SER
1	C	923	ASP
1	C	929	CYS
1	C	991	ARG
1	C	993	PHE
1	C	1013	HIS
1	C	1015	LEU
1	C	1018	SER
1	C	1025	MET
2	D	11	CYS
2	D	90	TYR
2	D	96	ARG
2	D	148	ARG
2	D	212	ARG
2	D	215	CYS
2	D	249	CYS
2	D	283	LYS
2	D	333	SER

Sometimes sidechains can be flipped to improve hydrogen bonding and reduce clashes. All (13) such sidechains are listed below:

Mol	Chain	Res	Type
1	A	492	ASN
1	A	766	HIS
1	A	775	ASN
1	A	822	ASN
1	A	934	ASN
2	B	93	HIS
2	B	170	GLN

Continued on next page...

Continued from previous page...

Mol	Chain	Res	Type
1	C	858	GLN
2	D	79	HIS
2	D	83	GLN
2	D	170	GLN
2	D	204	GLN
2	D	207	HIS

5.3.3 RNA [i](#)

There are no RNA molecules in this entry.

5.4 Non-standard residues in protein, DNA, RNA chains [i](#)

There are no non-standard protein/DNA/RNA residues in this entry.

5.5 Carbohydrates [i](#)

There are no monosaccharides in this entry.

5.6 Ligand geometry [i](#)

Of 6 ligands modelled in this entry, 6 are monoatomic - leaving 0 for Mogul analysis.

There are no bond length outliers.

There are no bond angle outliers.

There are no chirality outliers.

There are no torsion outliers.

There are no ring outliers.

No monomer is involved in short contacts.

5.7 Other polymers [i](#)

There are no such residues in this entry.

5.8 Polymer linkage issues [i](#)

There are no chain breaks in this entry.

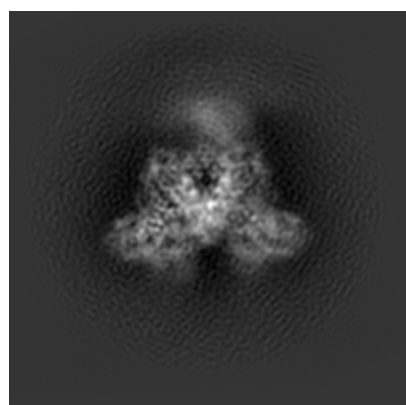
6 Map visualisation [i](#)

This section contains visualisations of the EMDB entry EMD-7853. These allow visual inspection of the internal detail of the map and identification of artifacts.

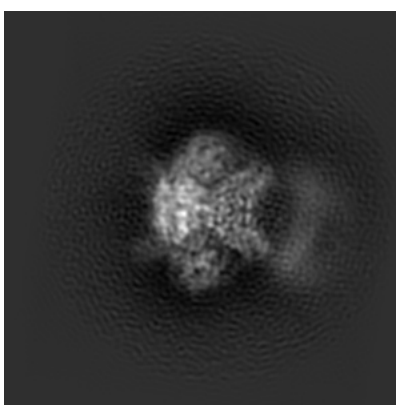
No raw map or half-maps were deposited for this entry and therefore no images, graphs, etc. pertaining to the raw map can be shown.

6.1 Orthogonal projections [i](#)

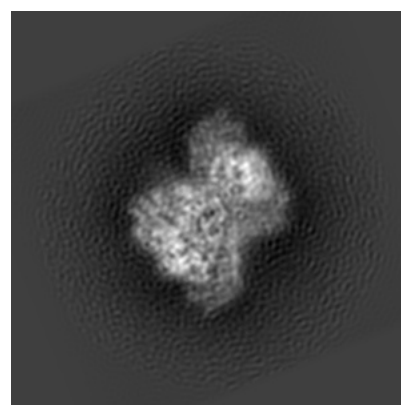
6.1.1 Primary map



X



Y

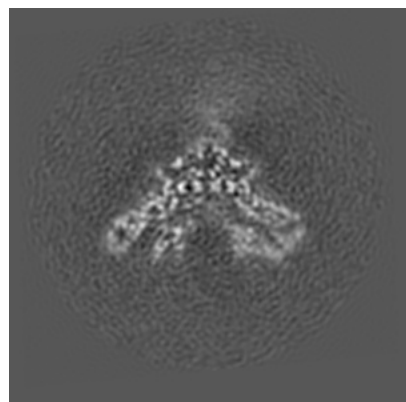


Z

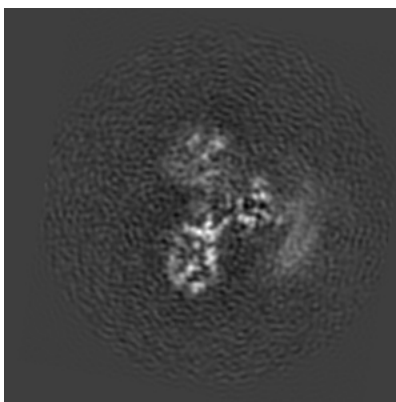
The images above show the map projected in three orthogonal directions.

6.2 Central slices [i](#)

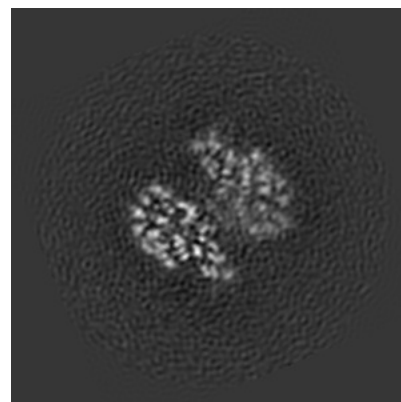
6.2.1 Primary map



X Index: 128



Y Index: 128

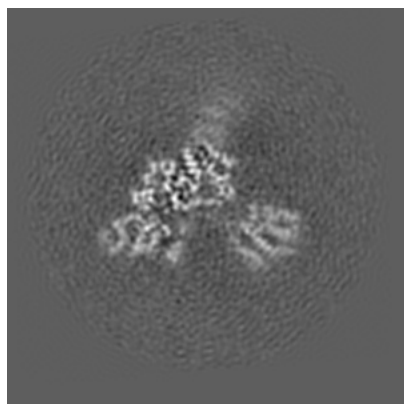


Z Index: 128

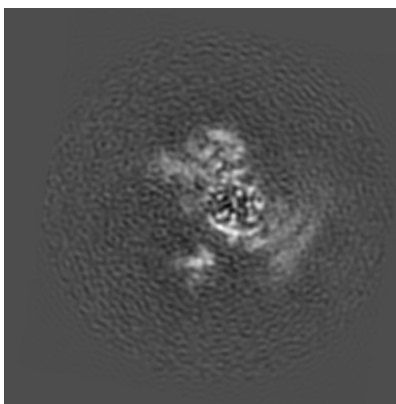
The images above show central slices of the map in three orthogonal directions.

6.3 Largest variance slices [i](#)

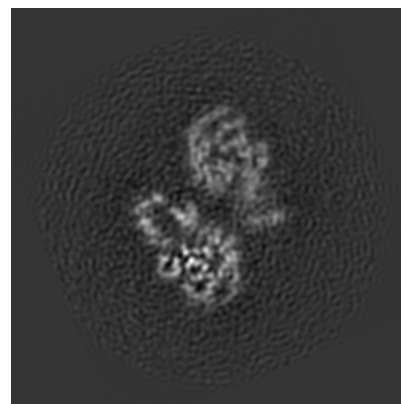
6.3.1 Primary map



X Index: 123



Y Index: 137

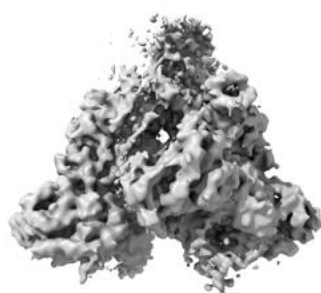


Z Index: 115

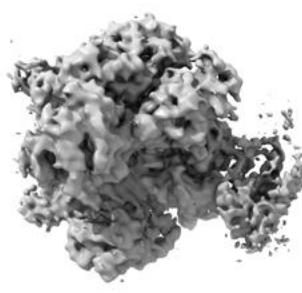
The images above show the largest variance slices of the map in three orthogonal directions.

6.4 Orthogonal surface views [i](#)

6.4.1 Primary map



X



Y



Z

The images above show the 3D surface view of the map at the recommended contour level 0.03. These images, in conjunction with the slice images, may facilitate assessment of whether an appropriate contour level has been provided.

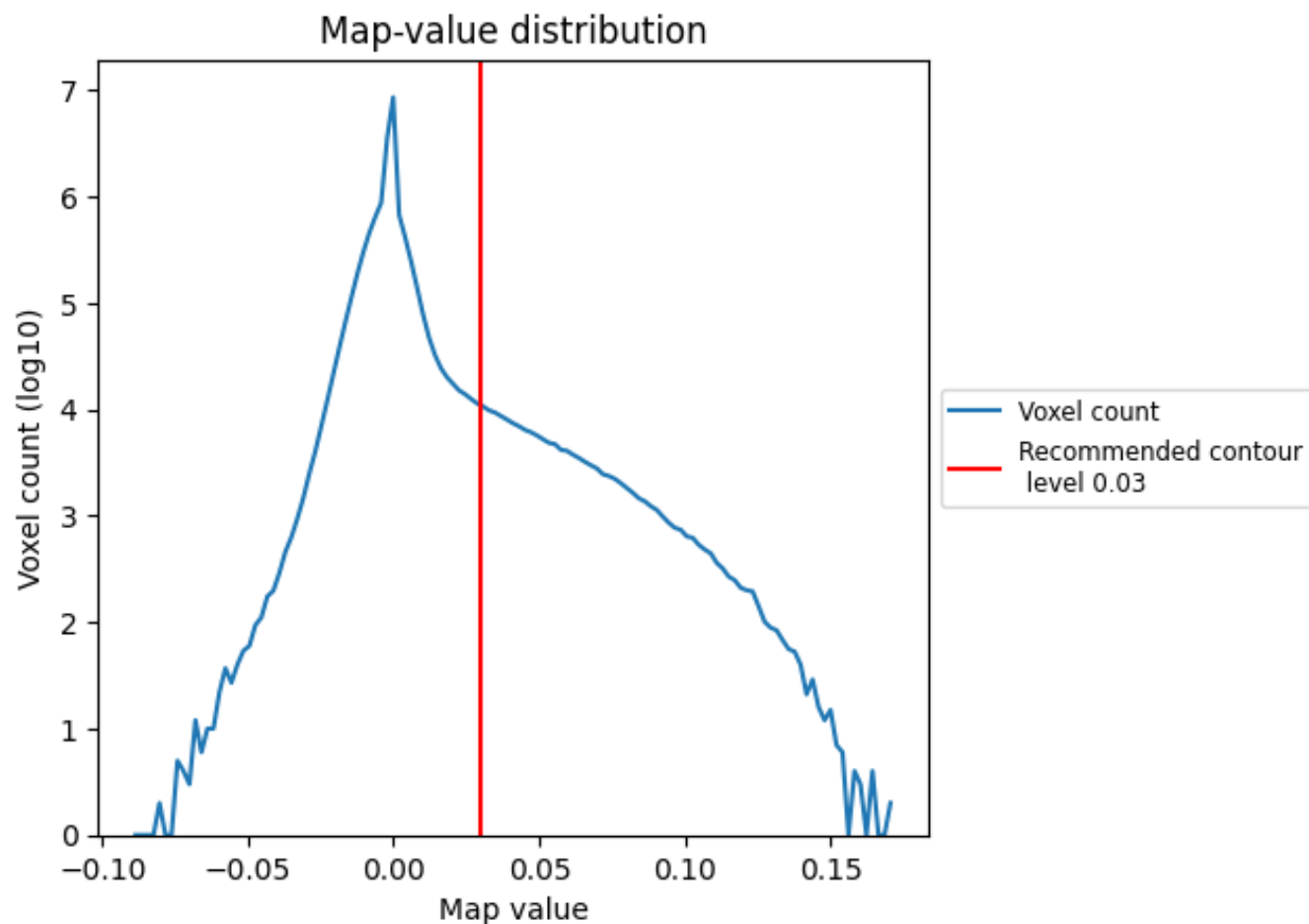
6.5 Mask visualisation

This section was not generated. No masks/segmentation were deposited.

7 Map analysis [i](#)

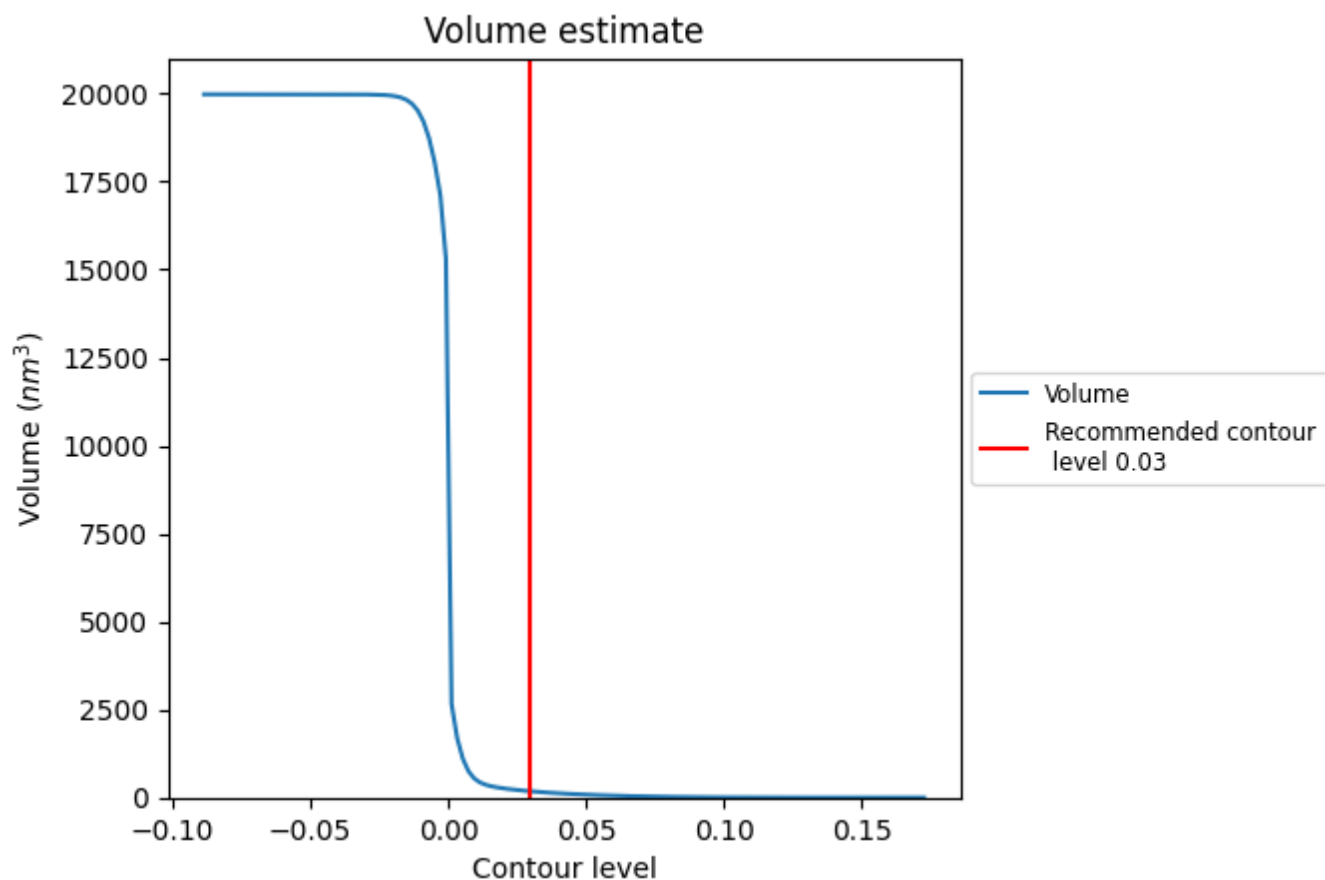
This section contains the results of statistical analysis of the map.

7.1 Map-value distribution [i](#)



The map-value distribution is plotted in 128 intervals along the x-axis. The y-axis is logarithmic. A spike in this graph at zero usually indicates that the volume has been masked.

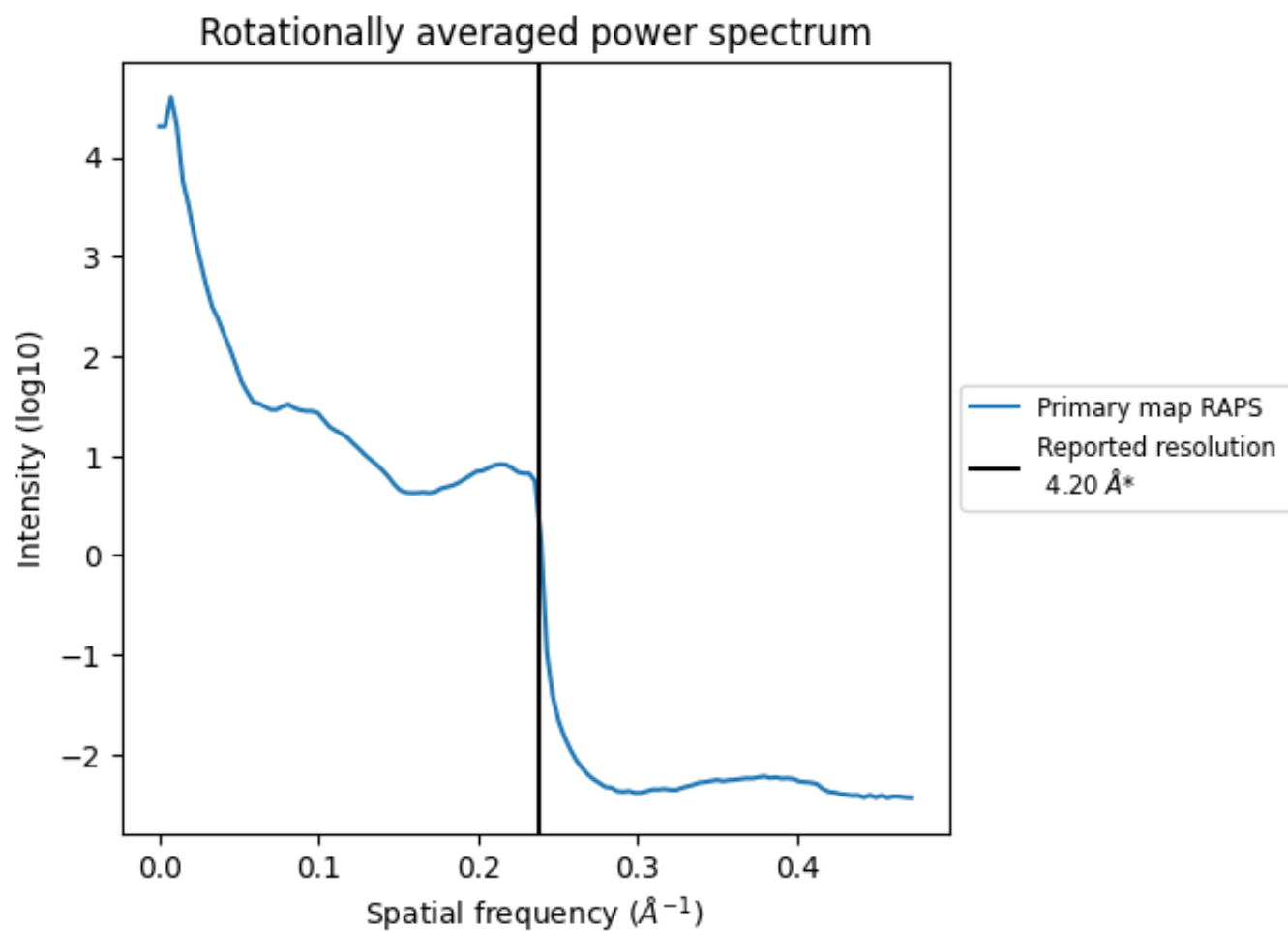
7.2 Volume estimate [i](#)



The volume at the recommended contour level is 178 nm³; this corresponds to an approximate mass of 160 kDa.

The volume estimate graph shows how the enclosed volume varies with the contour level. The recommended contour level is shown as a vertical line and the intersection between the line and the curve gives the volume of the enclosed surface at the given level.

7.3 Rotationally averaged power spectrum ⓘ



*Reported resolution corresponds to spatial frequency of 0.238 Å⁻¹

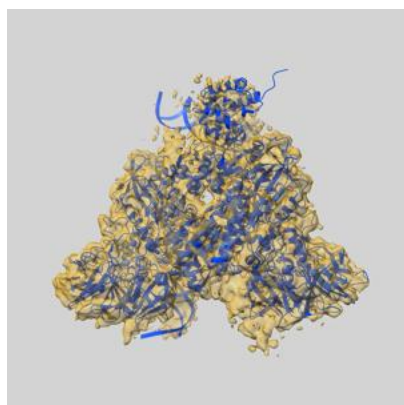
8 Fourier-Shell correlation

This section was not generated. No FSC curve or half-maps provided.

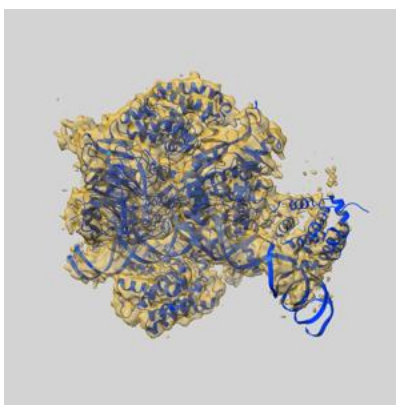
9 Map-model fit [i](#)

This section contains information regarding the fit between EMDB map EMD-7853 and PDB model 6DBX. Per-residue inclusion information can be found in section [3](#) on page [7](#).

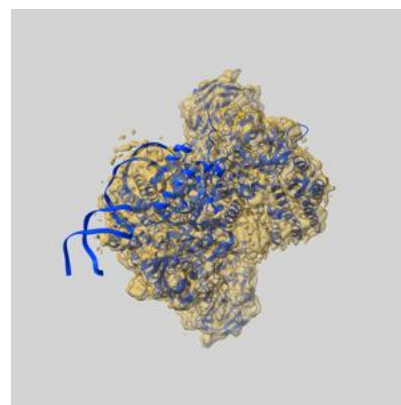
9.1 Map-model overlay [i](#)



X



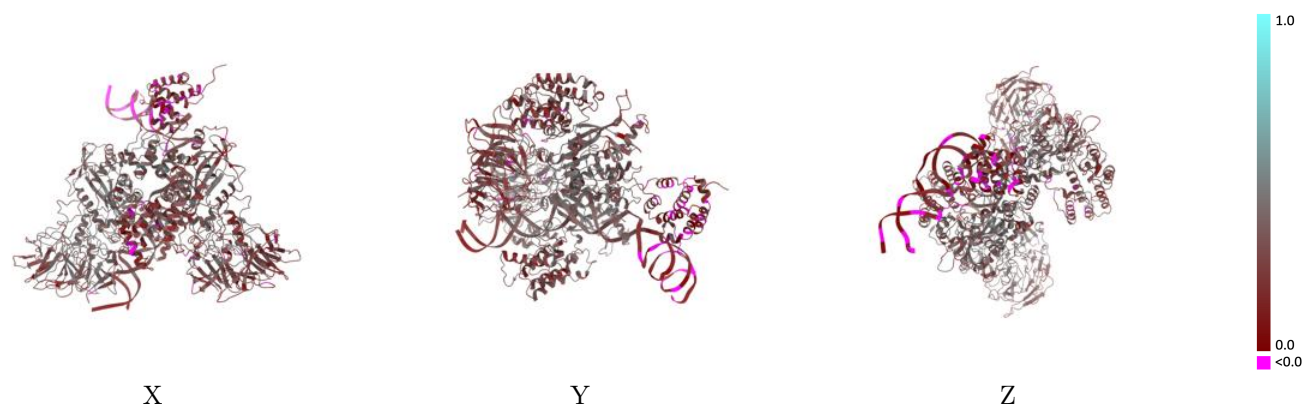
Y



Z

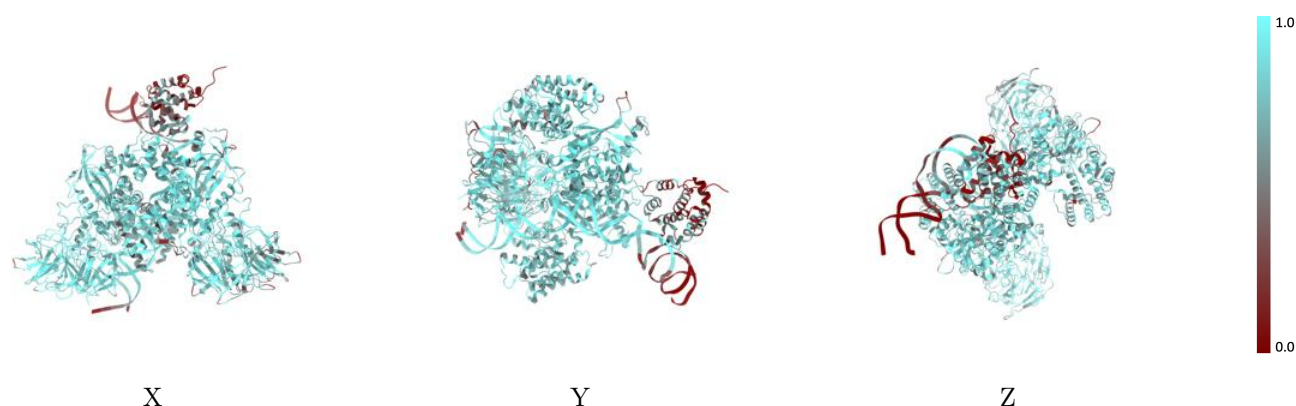
The images above show the 3D surface view of the map at the recommended contour level 0.03 at 50% transparency in yellow overlaid with a ribbon representation of the model coloured in blue. These images allow for the visual assessment of the quality of fit between the atomic model and the map.

9.2 Q-score mapped to coordinate model [i](#)



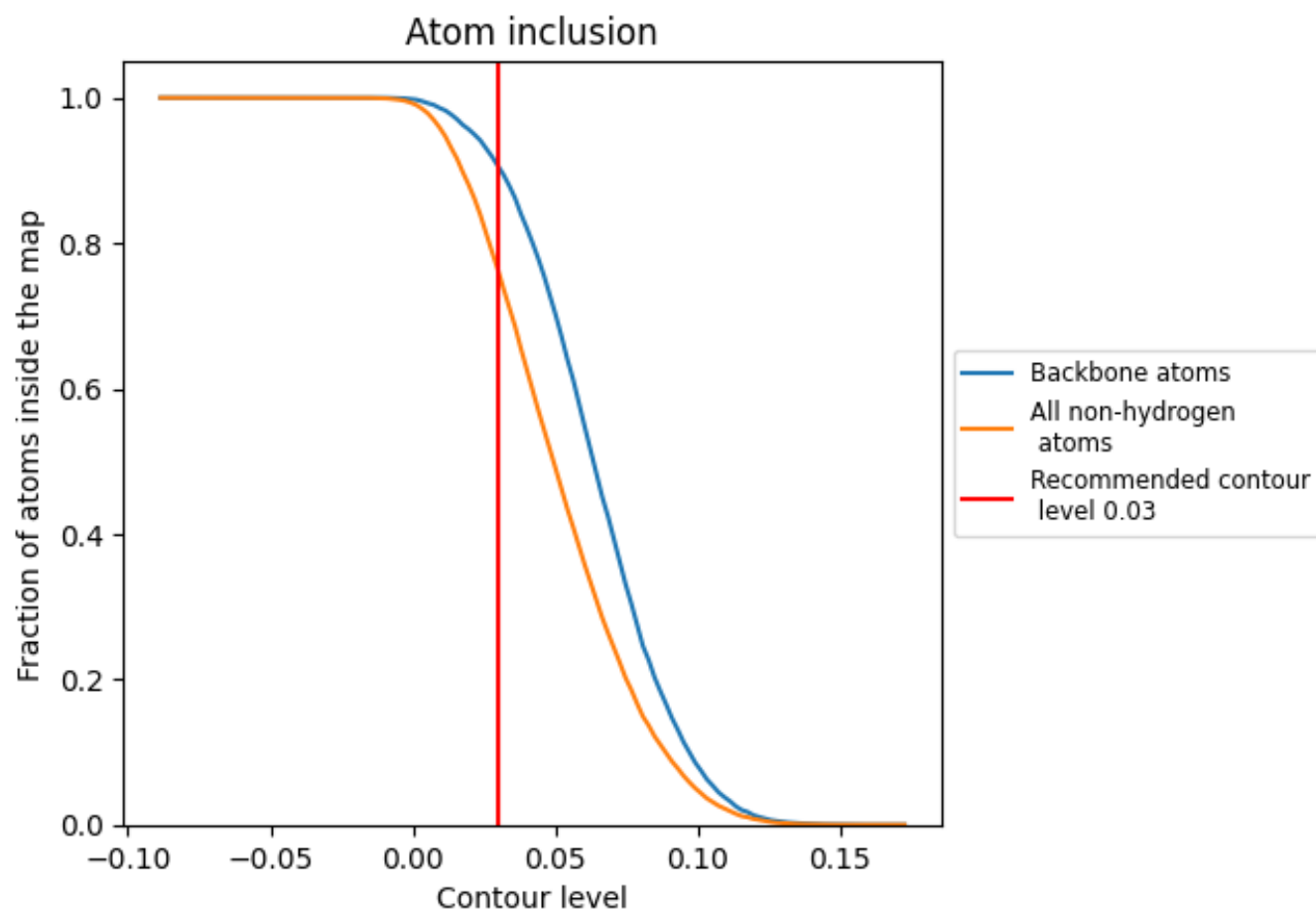
The images above show the model with each residue coloured according to its Q-score. This shows their resolvability in the map with higher Q-score values reflecting better resolvability. Please note: Q-score is calculating the resolvability of atoms, and thus high values are only expected at resolutions at which atoms can be resolved. Low Q-score values may therefore be expected for many entries.

9.3 Atom inclusion mapped to coordinate model [i](#)



The images above show the model with each residue coloured according to its atom inclusion. This shows to what extent they are inside the map at the recommended contour level (0.03).

9.4 Atom inclusion [i](#)



At the recommended contour level, 91% of all backbone atoms, 76% of all non-hydrogen atoms, are inside the map.

9.5 Map-model fit summary ⓘ

The table lists the average atom inclusion at the recommended contour level (0.03) and Q-score for the entire model and for each chain.

Chain	Atom inclusion	Q-score
All	<div><div></div>0.7625</div>	<div><div></div>0.3070</div>
A	<div><div></div>0.7752</div>	<div><div></div>0.3350</div>
B	<div><div></div>0.8450</div>	<div><div></div>0.3570</div>
C	<div><div></div>0.7516</div>	<div><div></div>0.3000</div>
D	<div><div></div>0.7628</div>	<div><div></div>0.2970</div>
E	<div><div></div>0.6452</div>	<div><div></div>0.2060</div>
F	<div><div></div>0.6563</div>	<div><div></div>0.2030</div>

1.0

0.0

<0.0