



Full wwPDB X-ray Structure Validation Report ⓘ

May 17, 2020 – 08:48 pm BST

PDB ID : 6DD6
Title : Crystal structure of bacterial (6-4) photolyase PhrB from in situ serial Laue diffraction
Authors : Ren, Z.
Deposited on : 2018-05-09
Resolution : 2.30 Å(reported)

This is a Full wwPDB X-ray Structure Validation Report for a publicly released PDB entry.

We welcome your comments at validation@mail.wwpdb.org

A user guide is available at

<https://www.wwpdb.org/validation/2017/XrayValidationReportHelp>

with specific help available everywhere you see the ⓘ symbol.

The following versions of software and data (see [references ⓘ](#)) were used in the production of this report:

MolProbity : 4.02b-467
Mogul : 1.8.5 (274361), CSD as541be (2020)
Xtriage (Phenix) : 1.13
EDS : 2.11
buster-report : 1.1.7 (2018)
Percentile statistics : 20191225.v01 (using entries in the PDB archive December 25th 2019)
Refmac : 5.8.0158
CCP4 : 7.0.044 (Gargrove)
Ideal geometry (proteins) : Engh & Huber (2001)
Ideal geometry (DNA, RNA) : Parkinson et al. (1996)
Validation Pipeline (wwPDB-VP) : 2.11

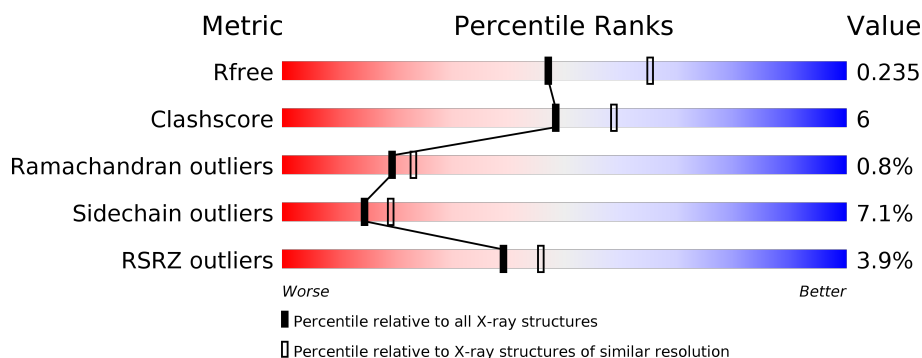
1 Overall quality at a glance

The following experimental techniques were used to determine the structure:

X-RAY DIFFRACTION

The reported resolution of this entry is 2.30 Å.

Percentile scores (ranging between 0-100) for global validation metrics of the entry are shown in the following graphic. The table shows the number of entries on which the scores are based.



Metric	Whole archive (#Entries)	Similar resolution (#Entries, resolution range(Å))
R_{free}	130704	5042 (2.30-2.30)
Clashscore	141614	5643 (2.30-2.30)
Ramachandran outliers	138981	5575 (2.30-2.30)
Sidechain outliers	138945	5575 (2.30-2.30)
RSRZ outliers	127900	4938 (2.30-2.30)

The table below summarises the geometric issues observed across the polymeric chains and their fit to the electron density. The red, orange, yellow and green segments on the lower bar indicate the fraction of residues that contain outliers for ≥ 3 , 2, 1 and 0 types of geometric quality criteria respectively. A grey segment represents the fraction of residues that are not modelled. The numeric value for each fraction is indicated below the corresponding segment, with a dot representing fractions $\leq 5\%$. The upper red bar (where present) indicates the fraction of residues that have poor fit to the electron density. The numeric value is given above the bar.

Mol	Chain	Length	Quality of chain
1	A	518	<div> <div>4%</div> <div> <div></div> <div>81%</div> <div>16%</div> <div>..</div> </div> </div>

2 Entry composition

There are 5 unique types of molecules in this entry. The entry contains 4487 atoms, of which 0 are hydrogens and 0 are deuteriums.

In the tables below, the ZeroOcc column contains the number of atoms modelled with zero occupancy, the AltConf column contains the number of residues with at least one atom in alternate conformation and the Trace column contains the number of residues modelled with at most 2 atoms.

- Molecule 1 is a protein called Photolyase PhrB.

Mol	Chain	Residues	Atoms					ZeroOcc	AltConf	Trace
			Total	C	N	O	S			
1	A	512	4115	2610	731	751	23	0	1	0

There are 11 discrepancies between the modelled and reference sequences:

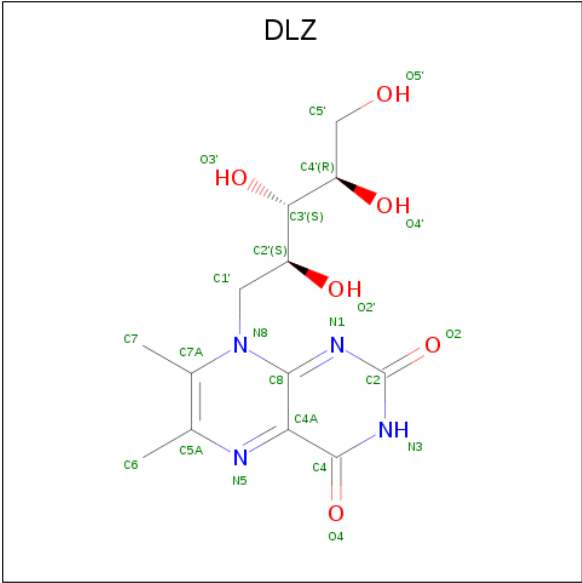
Chain	Residue	Modelled	Actual	Comment	Reference
A	508	ALA	-	expression tag	UNP A0A083ZLV8
A	509	ALA	-	expression tag	UNP A0A083ZLV8
A	510	ALA	-	expression tag	UNP A0A083ZLV8
A	511	LEU	-	expression tag	UNP A0A083ZLV8
A	512	GLU	-	expression tag	UNP A0A083ZLV8
A	513	HIS	-	expression tag	UNP A0A083ZLV8
A	514	HIS	-	expression tag	UNP A0A083ZLV8
A	515	HIS	-	expression tag	UNP A0A083ZLV8
A	516	HIS	-	expression tag	UNP A0A083ZLV8
A	517	HIS	-	expression tag	UNP A0A083ZLV8
A	518	HIS	-	expression tag	UNP A0A083ZLV8

- Molecule 2 is FLAVIN-ADENINE DINUCLEOTIDE (three-letter code: FAD) (formula: $C_{27}H_{33}N_9O_{15}P_2$).



Mol	Chain	Residues	Atoms					ZeroOcc	AltConf
2	A	1	Total	C	N	O	P	0	0
			53	27	9	15	2		

- Molecule 3 is 1-deoxy-1-(6,7-dimethyl-2,4-dioxo-3,4-dihydropteridin-8(2H)-yl)-D-ribitol (three-letter code: DLZ) (formula: C₁₃H₁₈N₄O₆).



Mol	Chain	Residues	Atoms				ZeroOcc	AltConf
3	A	1	Total	C	N	O	0	0
			23	13	4	6		

- Molecule 4 is IRON/SULFUR CLUSTER (three-letter code: SF4) (formula: Fe₄S₄).



Mol	Chain	Residues	Atoms			ZeroOcc	AltConf
4	A	1	Total	Fe	S	0	0
			8	4	4		

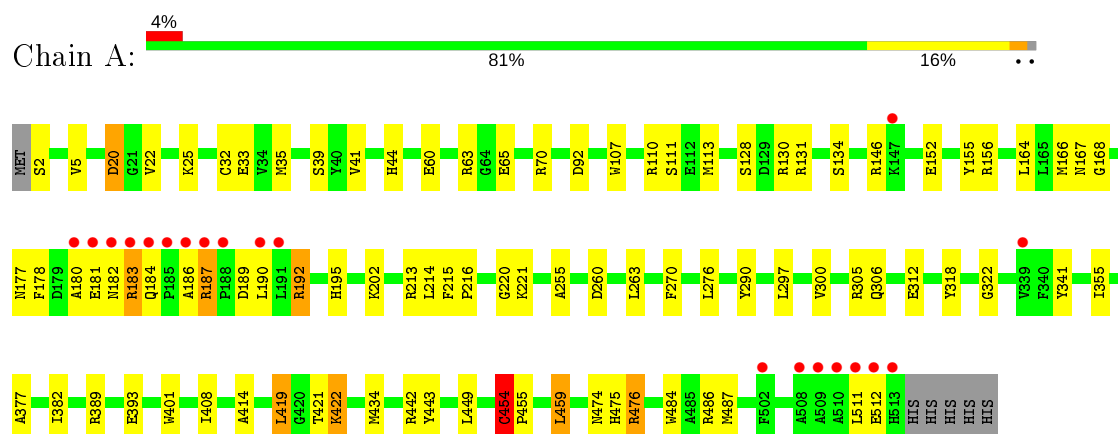
- Molecule 5 is water.

Mol	Chain	Residues	Atoms		ZeroOcc	AltConf
5	A	288	Total	O	0	0
			288	288		

3 Residue-property plots [i](#)

These plots are drawn for all protein, RNA and DNA chains in the entry. The first graphic for a chain summarises the proportions of the various outlier classes displayed in the second graphic. The second graphic shows the sequence view annotated by issues in geometry and electron density. Residues are color-coded according to the number of geometric quality criteria for which they contain at least one outlier: green = 0, yellow = 1, orange = 2 and red = 3 or more. A red dot above a residue indicates a poor fit to the electron density ($RSRZ > 2$). Stretches of 2 or more consecutive residues without any outlier are shown as a green connector. Residues present in the sample, but not in the model, are shown in grey.

• Molecule 1: Photolyase PhrB



4 Data and refinement statistics

Property	Value	Source
Space group	P 21 21 2	Depositor
Cell constants a, b, c, α , β , γ	99.70 Å 106.80 Å 57.30 Å 90.00° 90.00° 90.00°	Depositor
Resolution (Å)	49.68 – 2.30 57.30 – 2.29	Depositor EDS
% Data completeness (in resolution range)	99.0 (49.68-2.30) 97.6 (57.30-2.29)	Depositor EDS
R_{merge}	(Not available)	Depositor
R_{sym}	(Not available)	Depositor
$\langle I/\sigma(I) \rangle$ ¹	1.15 (at 2.29 Å)	Xtriage
Refinement program	PHENIX (1.10.1 _2155: ???)	Depositor
R, R_{free}	0.166 , 0.235 0.167 , 0.235	Depositor DCC
R_{free} test set	1389 reflections (5.01%)	wwPDB-VP
Wilson B-factor (Å ²)	32.8	Xtriage
Anisotropy	0.259	Xtriage
Bulk solvent k_{sol} (e/Å ³), B_{sol} (Å ²)	0.30 , 69.0	EDS
L-test for twinning ²	$\langle L \rangle = 0.45$, $\langle L^2 \rangle = 0.27$	Xtriage
Estimated twinning fraction	No twinning to report.	Xtriage
F_o, F_c correlation	0.95	EDS
Total number of atoms	4487	wwPDB-VP
Average B, all atoms (Å ²)	43.0	wwPDB-VP

Xtriage's analysis on translational NCS is as follows: *The largest off-origin peak in the Patterson function is 5.31% of the height of the origin peak. No significant pseudotranslation is detected.*

¹Intensities estimated from amplitudes.

²Theoretical values of $\langle |L| \rangle$, $\langle L^2 \rangle$ for acentric reflections are 0.5, 0.333 respectively for untwinned datasets, and 0.375, 0.2 for perfectly twinned datasets.

5 Model quality [i](#)

5.1 Standard geometry [i](#)

Bond lengths and bond angles in the following residue types are not validated in this section: DLZ, SF4, FAD

The Z score for a bond length (or angle) is the number of standard deviations the observed value is removed from the expected value. A bond length (or angle) with $|Z| > 5$ is considered an outlier worth inspection. RMSZ is the root-mean-square of all Z scores of the bond lengths (or angles).

Mol	Chain	Bond lengths		Bond angles	
		RMSZ	$\# Z > 5$	RMSZ	$\# Z > 5$
1	A	0.48	0/4222	0.62	2/5711 (0.0%)

There are no bond length outliers.

All (2) bond angle outliers are listed below:

Mol	Chain	Res	Type	Atoms	Z	Observed($^{\circ}$)	Ideal($^{\circ}$)
1	A	454	CYS	CA-CB-SG	-8.09	99.45	114.00
1	A	419	LEU	CA-CB-CG	5.39	127.69	115.30

There are no chirality outliers.

There are no planarity outliers.

5.2 Too-close contacts [i](#)

In the following table, the Non-H and H(model) columns list the number of non-hydrogen atoms and hydrogen atoms in the chain respectively. The H(added) column lists the number of hydrogen atoms added and optimized by MolProbity. The Clashes column lists the number of clashes within the asymmetric unit, whereas Symm-Clashes lists symmetry related clashes.

Mol	Chain	Non-H	H(model)	H(added)	Clashes	Symm-Clashes
1	A	4115	0	3967	47	0
2	A	53	0	31	2	0
3	A	23	0	18	2	0
4	A	8	0	0	0	0
5	A	288	0	0	7	0
All	All	4487	0	4016	49	0

The all-atom clashscore is defined as the number of clashes found per 1000 atoms (including hydrogen atoms). The all-atom clashscore for this structure is 6.

All (49) close contacts within the same asymmetric unit are listed below, sorted by their clash magnitude.

Atom-1	Atom-2	Interatomic distance (Å)	Clash overlap (Å)
1:A:60:GLU:OE2	1:A:63:ARG:NH1	2.23	0.71
1:A:183:ARG:HH22	1:A:434:MET:HE1	1.57	0.69
1:A:181:GLU:N	1:A:182:ASN:HA	2.09	0.68
1:A:312:GLU:OE2	5:A:701:HOH:O	2.13	0.66
1:A:192:ARG:NH1	1:A:260:ASP:OD2	2.29	0.66
1:A:35:MET:O	1:A:39:SER:OG	2.13	0.60
1:A:192:ARG:NH1	1:A:263:LEU:HA	2.18	0.59
1:A:182:ASN:OD1	1:A:183:ARG:N	2.33	0.57
1:A:182:ASN:OD1	1:A:183:ARG:HG2	2.04	0.57
1:A:318:TYR:CD1	1:A:401:TRP:HA	2.39	0.57
1:A:341:TYR:HA	1:A:355:ILE:HD13	1.85	0.57
1:A:178:PHE:O	1:A:180:ALA:HA	2.06	0.55
1:A:454:CYS:SG	1:A:455:PRO:HD2	2.46	0.55
1:A:214:LEU:C	1:A:216:PRO:HD3	2.27	0.55
1:A:187:ARG:O	1:A:187:ARG:HD3	2.07	0.54
1:A:164:LEU:O	1:A:166:MET:HG2	2.08	0.54
1:A:408:ILE:HG23	1:A:414:ALA:HB3	1.92	0.52
1:A:152:GLU:HB2	5:A:885:HOH:O	2.10	0.50
1:A:178:PHE:C	1:A:180:ALA:HA	2.32	0.50
1:A:107:TRP:CZ2	1:A:322:GLY:HA2	2.47	0.49
1:A:290:TYR:HB2	1:A:300:VAL:HG21	1.94	0.49
1:A:131:ARG:HD2	5:A:852:HOH:O	2.13	0.48
1:A:213:ARG:HB2	5:A:710:HOH:O	2.14	0.47
1:A:318:TYR:CG	1:A:401:TRP:HA	2.49	0.47
1:A:186:ALA:HB2	1:A:255:ALA:HB1	1.96	0.46
1:A:306:GLN:HB3	2:A:601:FAD:C8A	2.46	0.46
1:A:290:TYR:CZ	1:A:297:LEU:HD13	2.51	0.46
3:A:602:DLZ:H7	3:A:602:DLZ:H1'	1.60	0.45
1:A:202:LYS:HB2	5:A:926:HOH:O	2.17	0.45
1:A:5:VAL:HG21	1:A:22:VAL:HG11	1.99	0.45
1:A:476:ARG:O	1:A:476:ARG:HD3	2.16	0.45
2:A:601:FAD:O3P	2:A:601:FAD:H3B	2.16	0.44
1:A:474:ASN:C	1:A:476:ARG:H	2.20	0.44
1:A:20:ASP:OD2	1:A:130:ARG:NH1	2.50	0.44
1:A:455:PRO:O	1:A:459:LEU:HB2	2.17	0.44
1:A:152:GLU:HG2	5:A:925:HOH:O	2.19	0.43
1:A:195:HIS:HB3	5:A:838:HOH:O	2.18	0.43
1:A:41:VAL:HB	1:A:393:GLU:HG2	2.00	0.43
1:A:155:TYR:CZ	1:A:305:ARG:HG3	2.54	0.42
1:A:422:LYS:HD3	1:A:422:LYS:HA	1.88	0.42

Continued on next page...

Continued from previous page...

Atom-1	Atom-2	Interatomic distance (Å)	Clash overlap (Å)
1:A:215:PHE:N	1:A:216:PRO:HD3	2.35	0.42
1:A:33:GLU:HA	3:A:602:DLZ:O4	2.18	0.42
1:A:377:ALA:O	1:A:382:ILE:HG12	2.19	0.42
1:A:484:TRP:HE3	1:A:487:MET:HE3	1.84	0.41
1:A:442:ARG:HG3	1:A:443:TYR:N	2.34	0.41
1:A:389:ARG:O	1:A:393:GLU:HG3	2.21	0.41
1:A:419:LEU:HD12	1:A:421:THR:HG23	2.03	0.41
1:A:44:HIS:CE1	1:A:220:GLY:HA3	2.55	0.40
1:A:276:LEU:HD23	1:A:276:LEU:HA	1.87	0.40

There are no symmetry-related clashes.

5.3 Torsion angles [i](#)

5.3.1 Protein backbone [i](#)

In the following table, the Percentiles column shows the percent Ramachandran outliers of the chain as a percentile score with respect to all X-ray entries followed by that with respect to entries of similar resolution.

The Analysed column shows the number of residues for which the backbone conformation was analysed, and the total number of residues.

Mol	Chain	Analysed	Favoured	Allowed	Outliers	Percentiles	
1	A	511/518 (99%)	485 (95%)	22 (4%)	4 (1%)	19	23

All (4) Ramachandran outliers are listed below:

Mol	Chain	Res	Type
1	A	189	ASP
1	A	146	ARG
1	A	168	GLY
1	A	184	GLN

5.3.2 Protein sidechains [i](#)

In the following table, the Percentiles column shows the percent sidechain outliers of the chain as a percentile score with respect to all X-ray entries followed by that with respect to entries of similar resolution.

The Analysed column shows the number of residues for which the sidechain conformation was

analysed, and the total number of residues.

Mol	Chain	Analysed	Rotameric	Outliers	Percentiles	
1	A	422/428 (99%)	392 (93%)	30 (7%)	14	19

All (30) residues with a non-rotameric sidechain are listed below:

Mol	Chain	Res	Type
1	A	2	SER
1	A	20	ASP
1	A	25	LYS
1	A	32	CYS
1	A	65	GLU
1	A	70	ARG
1	A	92	ASP
1	A	110	ARG
1	A	111	SER
1	A	113	MET
1	A	128	SER
1	A	134	SER
1	A	156	ARG
1	A	167	ASN
1	A	177	ASN
1	A	183	ARG
1	A	187	ARG
1	A	190	LEU
1	A	192	ARG
1	A	221	LYS
1	A	270	PHE
1	A	422	LYS
1	A	449	LEU
1	A	454	CYS
1	A	459	LEU
1	A	475	HIS
1	A	476	ARG
1	A	486	ARG
1	A	511	LEU
1	A	512	GLU

Some sidechains can be flipped to improve hydrogen bonding and reduce clashes. All (1) such sidechains are listed below:

Mol	Chain	Res	Type
1	A	136	HIS

5.3.3 RNA [i](#)

There are no RNA molecules in this entry.

5.4 Non-standard residues in protein, DNA, RNA chains [i](#)

There are no non-standard protein/DNA/RNA residues in this entry.

5.5 Carbohydrates [i](#)

There are no carbohydrates in this entry.

5.6 Ligand geometry [i](#)

3 ligands are modelled in this entry.

In the following table, the Counts columns list the number of bonds (or angles) for which Mogul statistics could be retrieved, the number of bonds (or angles) that are observed in the model and the number of bonds (or angles) that are defined in the Chemical Component Dictionary. The Link column lists molecule types, if any, to which the group is linked. The Z score for a bond length (or angle) is the number of standard deviations the observed value is removed from the expected value. A bond length (or angle) with $|Z| > 2$ is considered an outlier worth inspection. RMSZ is the root-mean-square of all Z scores of the bond lengths (or angles).

Mol	Type	Chain	Res	Link	Bond lengths			Bond angles		
					Counts	RMSZ	$\# Z > 2$	Counts	RMSZ	$\# Z > 2$
4	SF4	A	603	1	0,12,12	0.00	-	-		
3	DLZ	A	602	-	21,24,24	2.61	6 (28%)	22,35,35	2.62	10 (45%)
2	FAD	A	601	-	51,58,58	1.88	9 (17%)	60,89,89	2.10	14 (23%)

In the following table, the Chirals column lists the number of chiral outliers, the number of chiral centers analysed, the number of these observed in the model and the number defined in the Chemical Component Dictionary. Similar counts are reported in the Torsion and Rings columns. '-' means no outliers of that kind were identified.

Mol	Type	Chain	Res	Link	Chirals	Torsions	Rings
4	SF4	A	603	1	-	-	0/6/5/5
3	DLZ	A	602	-	-	2/14/14/14	0/2/2/2
2	FAD	A	601	-	-	4/30/50/50	0/6/6/6

All (15) bond length outliers are listed below:

Mol	Chain	Res	Type	Atoms	Z	Observed(Å)	Ideal(Å)
3	A	602	DLZ	C4A-C8	9.48	1.48	1.38
2	A	601	FAD	C4X-C10	9.03	1.47	1.38
3	A	602	DLZ	C4-C4A	4.25	1.48	1.41
2	A	601	FAD	C4-C4X	3.88	1.48	1.41
2	A	601	FAD	C9A-C5X	3.73	1.50	1.42
2	A	601	FAD	C8-C7	3.00	1.48	1.40
3	A	602	DLZ	C5A-N5	3.00	1.36	1.32
2	A	601	FAD	C2A-N3A	2.87	1.36	1.32
3	A	602	DLZ	C7A-C5A	2.81	1.49	1.41
2	A	601	FAD	C2B-C1B	-2.69	1.49	1.53
2	A	601	FAD	C5A-C4A	2.50	1.47	1.40
3	A	602	DLZ	C8-N1	2.48	1.36	1.33
2	A	601	FAD	C9A-N10	2.30	1.41	1.38
3	A	602	DLZ	C4A-N5	2.01	1.36	1.33
2	A	601	FAD	C4X-N5	2.00	1.36	1.33

All (24) bond angle outliers are listed below:

Mol	Chain	Res	Type	Atoms	Z	Observed(°)	Ideal(°)
2	A	601	FAD	C4-N3-C2	7.32	121.32	115.14
2	A	601	FAD	C4-C4X-C10	-6.95	115.35	119.95
3	A	602	DLZ	C4-N3-C2	6.40	120.55	115.14
3	A	602	DLZ	C4-C4A-C8	-5.65	116.21	119.95
2	A	601	FAD	C5X-C9A-N10	5.61	121.78	117.72
2	A	601	FAD	C1'-N10-C9A	4.66	121.96	118.29
3	A	602	DLZ	C1'-N8-C8	4.13	122.11	118.41
2	A	601	FAD	C10-C4X-N5	3.75	123.85	121.26
2	A	601	FAD	C9A-N10-C10	-3.24	117.66	121.91
3	A	602	DLZ	C4-C4A-N5	3.02	122.05	118.60
2	A	601	FAD	C4X-N5-C5X	2.90	119.67	116.77
3	A	602	DLZ	C5A-N5-C4A	2.72	120.87	118.16
3	A	602	DLZ	O3'-C3'-C4'	2.64	115.20	108.81
2	A	601	FAD	C4X-C4-N3	-2.58	119.91	123.43
3	A	602	DLZ	O2'-C2'-C3'	-2.50	103.03	109.10
2	A	601	FAD	C9A-C5X-N5	-2.25	118.84	122.36
3	A	602	DLZ	O4'-C4'-C3'	-2.21	103.72	109.10
2	A	601	FAD	O5'-C5'-C4'	-2.18	103.54	109.36
2	A	601	FAD	C1'-N10-C10	2.18	120.36	118.41
3	A	602	DLZ	C4A-C4-N3	-2.08	120.59	123.43
2	A	601	FAD	C4X-C10-N10	-2.06	118.18	120.30
2	A	601	FAD	N3A-C2A-N1A	-2.06	125.46	128.68
2	A	601	FAD	C4A-C5A-N7A	-2.04	107.27	109.40
3	A	602	DLZ	C1'-C2'-C3'	2.02	115.44	109.79

There are no chirality outliers.

All (6) torsion outliers are listed below:

Mol	Chain	Res	Type	Atoms
3	A	602	DLZ	O4'-C4'-C5'-O5'
2	A	601	FAD	C5B-O5B-PA-O2A
3	A	602	DLZ	C3'-C4'-C5'-O5'
2	A	601	FAD	C5B-O5B-PA-O3P
2	A	601	FAD	C5B-O5B-PA-O1A
2	A	601	FAD	P-O3P-PA-O1A

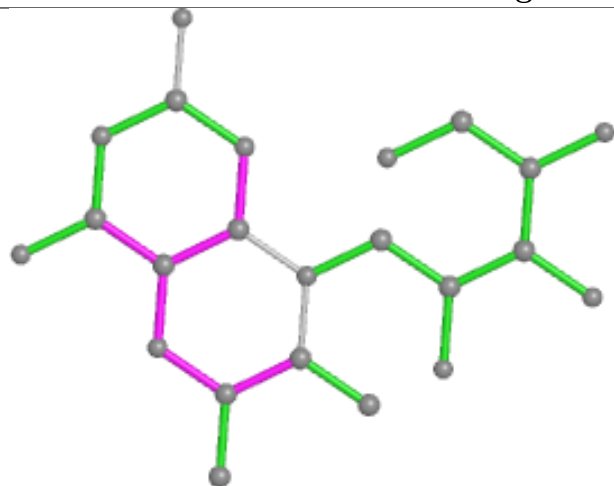
There are no ring outliers.

2 monomers are involved in 4 short contacts:

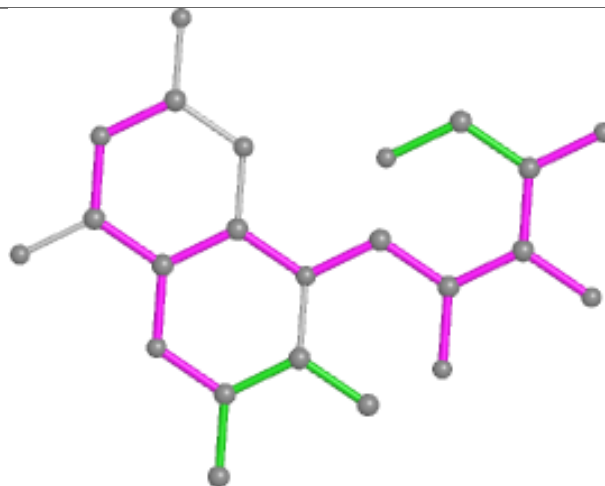
Mol	Chain	Res	Type	Clashes	Symm-Clashes
3	A	602	DLZ	2	0
2	A	601	FAD	2	0

The following is a two-dimensional graphical depiction of Mogul quality analysis of bond lengths, bond angles, torsion angles, and ring geometry for all instances of the Ligand of Interest. In addition, ligands with molecular weight > 250 and outliers as shown on the validation Tables will also be included. For torsion angles, if less than 5% of the Mogul distribution of torsion angles is within 10 degrees of the torsion angle in question, then that torsion angle is considered an outlier. Any bond that is central to one or more torsion angles identified as an outlier by Mogul will be highlighted in the graph. For rings, the root-mean-square deviation (RMSD) between the ring in question and similar rings identified by Mogul is calculated over all ring torsion angles. If the average RMSD is greater than 60 degrees and the minimal RMSD between the ring in question and any Mogul-identified rings is also greater than 60 degrees, then that ring is considered an outlier. The outliers are highlighted in purple. The color gray indicates Mogul did not find sufficient equivalents in the CSD to analyse the geometry.

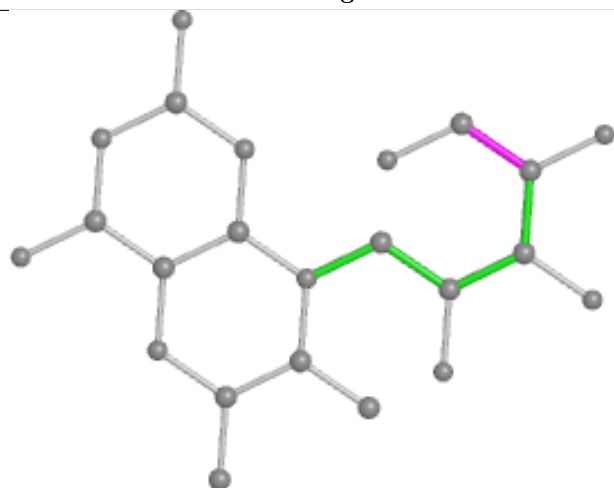
Ligand DLZ A 602



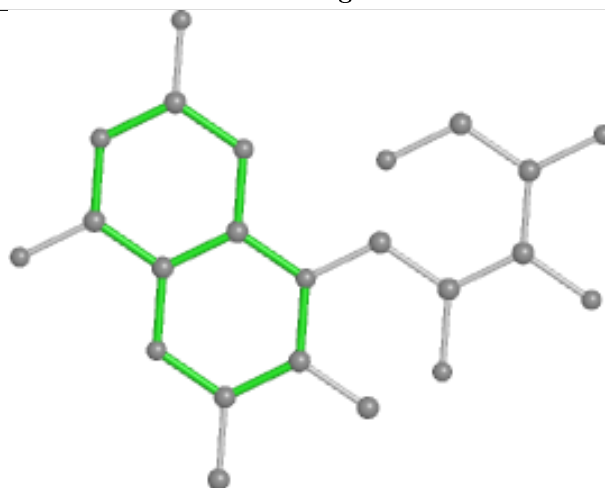
Bond lengths



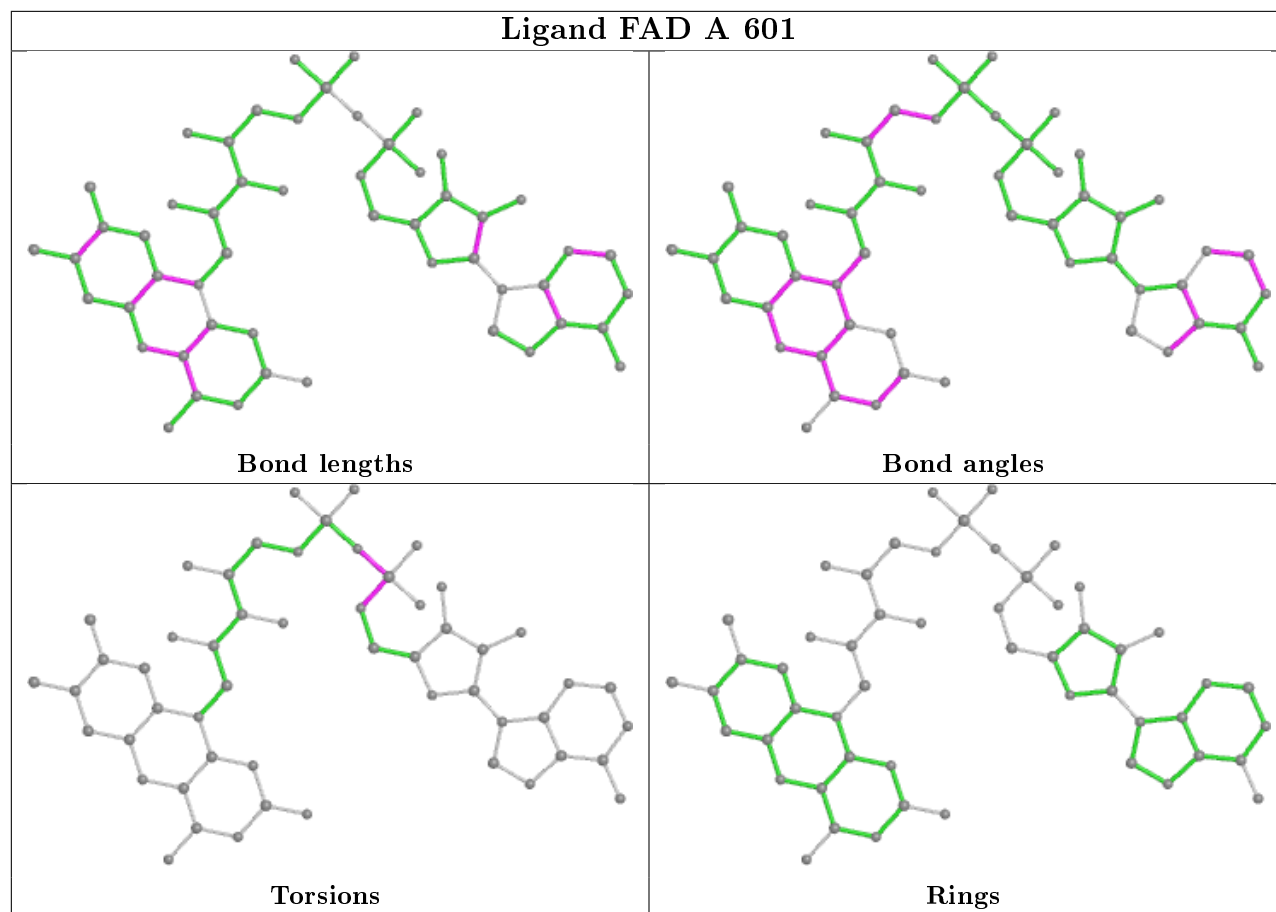
Bond angles



Torsions



Rings



5.7 Other polymers [i](#)

There are no such residues in this entry.

5.8 Polymer linkage issues [i](#)

There are no chain breaks in this entry.

6 Fit of model and data

6.1 Protein, DNA and RNA chains

In the following table, the column labelled ‘#RSRZ> 2’ contains the number (and percentage) of RSRZ outliers, followed by percent RSRZ outliers for the chain as percentile scores relative to all X-ray entries and entries of similar resolution. The OWAB column contains the minimum, median, 95th percentile and maximum values of the occupancy-weighted average B-factor per residue. The column labelled ‘Q< 0.9’ lists the number of (and percentage) of residues with an average occupancy less than 0.9.

Mol	Chain	Analysed	<RSRZ>	#RSRZ>2		OWAB(Å ²)	Q<0.9
1	A	512/518 (98%)	-0.39	20 (3%)	39 46	19, 40, 71, 159	0

All (20) RSRZ outliers are listed below:

Mol	Chain	Res	Type	RSRZ
1	A	180	ALA	12.4
1	A	182	ASN	10.1
1	A	185	PRO	6.1
1	A	190	LEU	6.0
1	A	186	ALA	4.5
1	A	181	GLU	4.5
1	A	184	GLN	3.7
1	A	508	ALA	3.4
1	A	510	ALA	3.2
1	A	513	HIS	3.2
1	A	502[A]	PHE	3.1
1	A	183	ARG	3.0
1	A	191	LEU	2.4
1	A	509	ALA	2.4
1	A	512	GLU	2.2
1	A	511	LEU	2.2
1	A	187	ARG	2.1
1	A	339	VAL	2.1
1	A	147	LYS	2.1
1	A	188	PRO	2.1

6.2 Non-standard residues in protein, DNA, RNA chains

There are no non-standard protein/DNA/RNA residues in this entry.

6.3 Carbohydrates [i](#)

There are no carbohydrates in this entry.

6.4 Ligands [i](#)

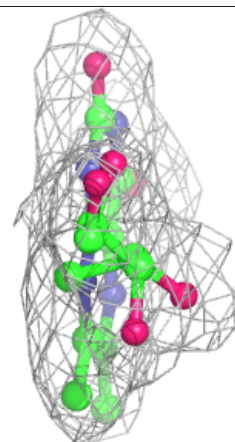
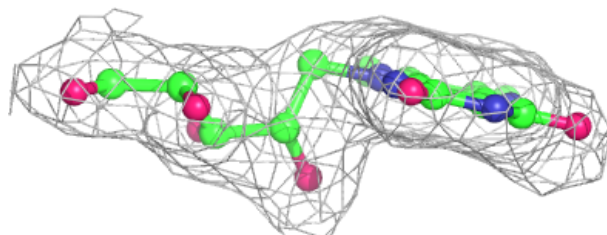
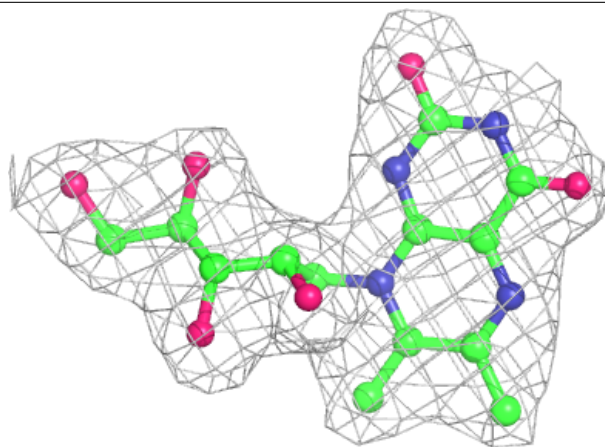
In the following table, the Atoms column lists the number of modelled atoms in the group and the number defined in the chemical component dictionary. The B-factors column lists the minimum, median, 95th percentile and maximum values of B factors of atoms in the group. The column labelled 'Q< 0.9' lists the number of atoms with occupancy less than 0.9.

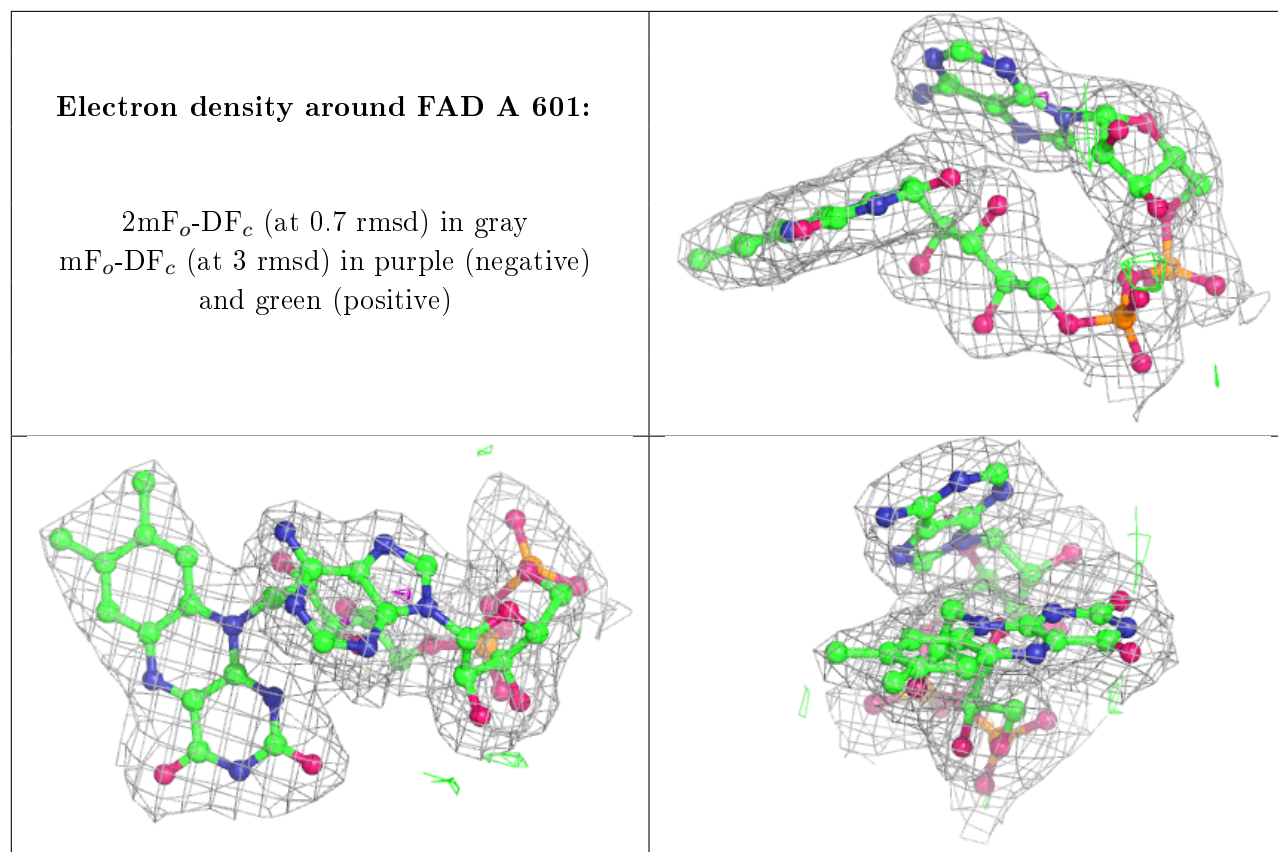
Mol	Type	Chain	Res	Atoms	RSCC	RSR	B-factors(Å ²)	Q<0.9
4	SF4	A	603	8/8	0.96	0.07	33,41,56,56	0
3	DLZ	A	602	23/23	0.96	0.10	20,31,39,52	0
2	FAD	A	601	53/53	0.98	0.09	16,26,35,39	0

The following is a graphical depiction of the model fit to experimental electron density of all instances of the Ligand of Interest. In addition, ligands with molecular weight > 250 and outliers as shown on the geometry validation Tables will also be included. Each fit is shown from different orientation to approximate a three-dimensional view.

Electron density around DLZ A 602:

2mF_o-DF_c (at 0.7 rmsd) in gray
mF_o-DF_c (at 3 rmsd) in purple (negative)
and green (positive)





6.5 Other polymers [i](#)

There are no such residues in this entry.