



# Full wwPDB X-ray Structure Validation Report ⓘ

Jun 14, 2020 – 03:02 am BST

PDB ID : 1DGG  
Title : HUMAN ERYTHROCYTE CATALASE CYANIDE COMPLEX  
Authors : Putnam, C.D.; Arvai, A.S.; Bourne, Y.; Tainer, J.A.  
Deposited on : 1999-11-24  
Resolution : 1.80 Å(reported)

This is a Full wwPDB X-ray Structure Validation Report for a publicly released PDB entry.

We welcome your comments at [validation@mail.wwpdb.org](mailto:validation@mail.wwpdb.org)

A user guide is available at

<https://www.wwpdb.org/validation/2017/XrayValidationReportHelp>

with specific help available everywhere you see the ⓘ symbol.

---

The following versions of software and data (see [references ⓘ](#)) were used in the production of this report:

MolProbity : 4.02b-467  
Mogul : 1.8.5 (274361), CSD as541be (2020)  
Xtriage (Phenix) : 1.13  
EDS : 2.11  
buster-report : 1.1.7 (2018)  
Percentile statistics : 20191225.v01 (using entries in the PDB archive December 25th 2019)  
Refmac : 5.8.0158  
CCP4 : 7.0.044 (Gargrove)  
Ideal geometry (proteins) : Engh & Huber (2001)  
Ideal geometry (DNA, RNA) : Parkinson et al. (1996)  
Validation Pipeline (wwPDB-VP) : 2.11

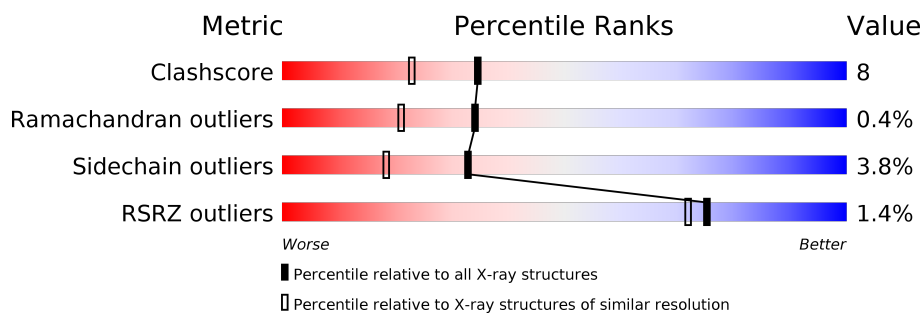
# 1 Overall quality at a glance

The following experimental techniques were used to determine the structure:

*X-RAY DIFFRACTION*

The reported resolution of this entry is 1.80 Å.

Percentile scores (ranging between 0-100) for global validation metrics of the entry are shown in the following graphic. The table shows the number of entries on which the scores are based.



Metric	Whole archive (#Entries)	Similar resolution (#Entries, resolution range(Å))
Clashscore	141614	6793 (1.80-1.80)
Ramachandran outliers	138981	6697 (1.80-1.80)
Sidechain outliers	138945	6696 (1.80-1.80)
RSRZ outliers	127900	5850 (1.80-1.80)

The table below summarises the geometric issues observed across the polymeric chains and their fit to the electron density. The red, orange, yellow and green segments on the lower bar indicate the fraction of residues that contain outliers for  $\geq 3$ , 2, 1 and 0 types of geometric quality criteria respectively. A grey segment represents the fraction of residues that are not modelled. The numeric value for each fraction is indicated below the corresponding segment, with a dot representing fractions  $\leq 5\%$ . The upper red bar (where present) indicates the fraction of residues that have poor fit to the electron density. The numeric value is given above the bar.

Mol	Chain	Length	Quality of chain
1	A	497	<div> <div>%</div> <div> <div></div> <div>82%</div> <div>17%</div> <div>.</div> </div> </div>
1	B	497	<div> <div>2%</div> <div> <div></div> <div>83%</div> <div>16%</div> <div>.</div> </div> </div>
1	C	497	<div> <div>%</div> <div> <div></div> <div>80%</div> <div>19%</div> <div>.</div> </div> </div>
1	D	497	<div> <div>%</div> <div> <div></div> <div>83%</div> <div>15%</div> <div>.</div> </div> </div>

The following table lists non-polymeric compounds, carbohydrate monomers and non-standard residues in protein, DNA, RNA chains that are outliers for geometric or electron-density-fit criteria:

Mol	Type	Chain	Res	Chirality	Geometry	Clashes	Electron density
2	CYN	A	4000	-	-	X	-
2	CYN	B	4001	-	-	X	-
2	CYN	C	4002	-	-	X	-
2	CYN	D	4003	-	-	X	-

## 2 Entry composition [i](#)

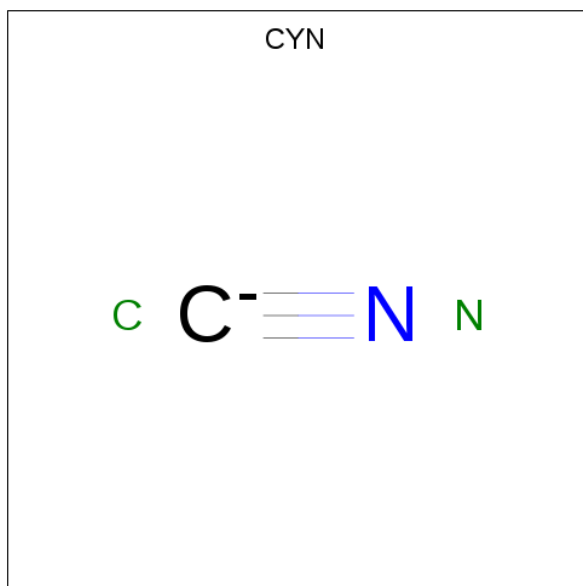
There are 5 unique types of molecules in this entry. The entry contains 17841 atoms, of which 0 are hydrogens and 0 are deuteriums.

In the tables below, the ZeroOcc column contains the number of atoms modelled with zero occupancy, the AltConf column contains the number of residues with at least one atom in alternate conformation and the Trace column contains the number of residues modelled with at most 2 atoms.

- Molecule 1 is a protein called CATALASE.

Mol	Chain	Residues	Atoms					ZeroOcc	AltConf	Trace
1	A	497	Total	C	N	O	S	0	3	0
			4018	2551	713	740	14			
1	B	497	Total	C	N	O	S	0	3	0
			4018	2551	713	740	14			
1	C	497	Total	C	N	O	S	0	3	0
			4018	2551	713	740	14			
1	D	497	Total	C	N	O	S	0	3	0
			4018	2551	713	740	14			

- Molecule 2 is CYANIDE ION (three-letter code: CYN) (formula: CN).



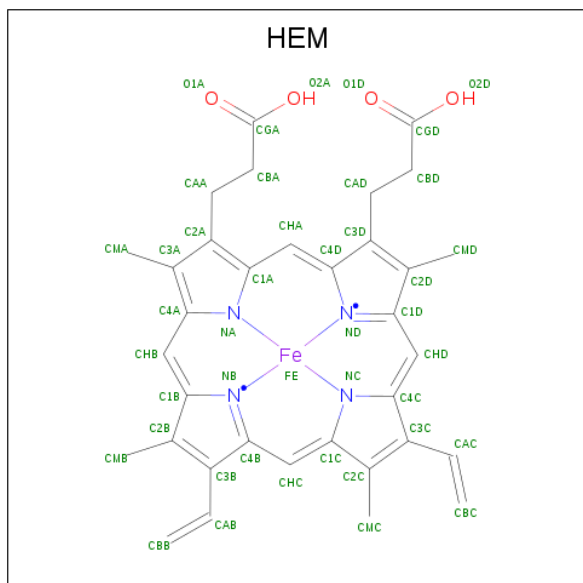
Mol	Chain	Residues	Atoms			ZeroOcc	AltConf
2	A	1	Total	C	N	0	0
			2	1	1		
2	B	1	Total	C	N	0	0
			2	1	1		

*Continued on next page...*

Continued from previous page...

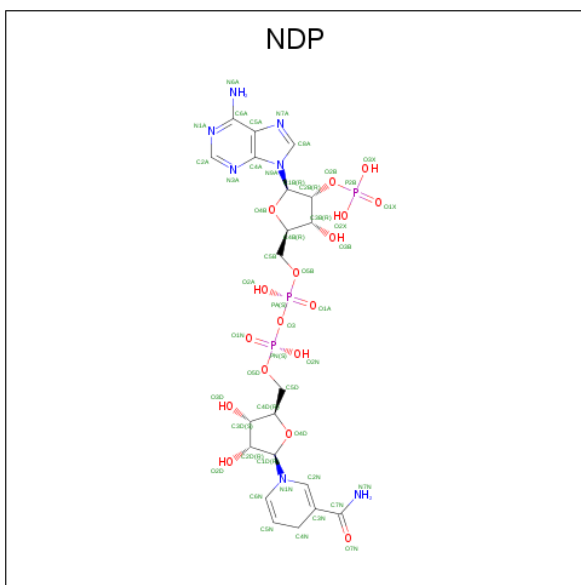
Mol	Chain	Residues	Atoms			ZeroOcc	AltConf
2	C	1	Total	C	N	0	0
			2	1	1		
2	D	1	Total	C	N	0	0
			2	1	1		

- Molecule 3 is PROTOPORPHYRIN IX CONTAINING FE (three-letter code: HEM) (formula:  $C_{34}H_{32}FeN_4O_4$ ).



Mol	Chain	Residues	Atoms					ZeroOcc	AltConf
3	A	1	Total	C	Fe	N	O	0	0
			43	34	1	4	4		
3	B	1	Total	C	Fe	N	O	0	0
			43	34	1	4	4		
3	C	1	Total	C	Fe	N	O	0	0
			43	34	1	4	4		
3	D	1	Total	C	Fe	N	O	0	0
			43	34	1	4	4		

- Molecule 4 is NADPH DIHYDRO-NICOTINAMIDE-ADENINE-DINUCLEOTIDE PHOSPHATE (three-letter code: NDP) (formula:  $C_{21}H_{30}N_7O_{17}P_3$ ).



Mol	Chain	Residues	Atoms					ZeroOcc	AltConf
4	A	1	Total 48	C 21	N 7	O 17	P 3	0	0
4	C	1	Total 48	C 21	N 7	O 17	P 3	0	0

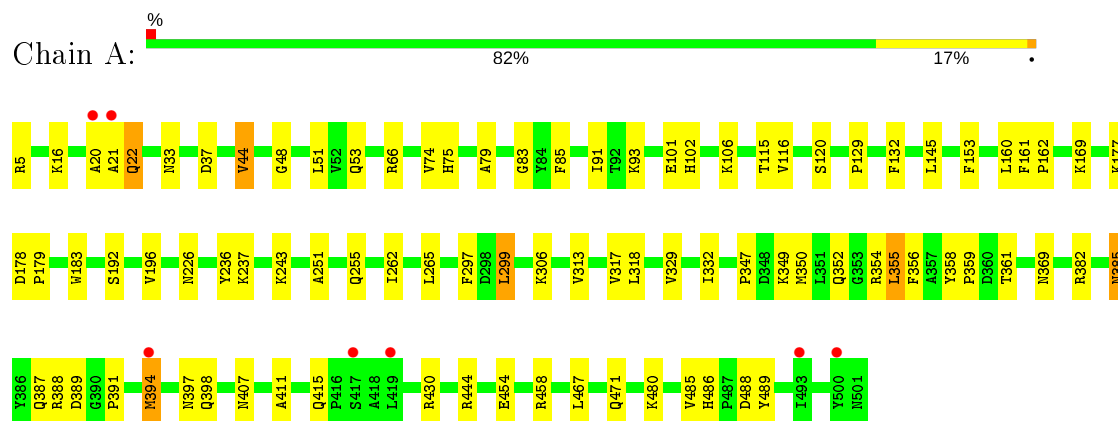
- Molecule 5 is water.

Mol	Chain	Residues	Atoms	ZeroOcc	AltConf
5	A	381	Total O 381 381	0	0
5	B	380	Total O 380 380	0	0
5	C	366	Total O 366 366	0	0
5	D	366	Total O 366 366	0	0

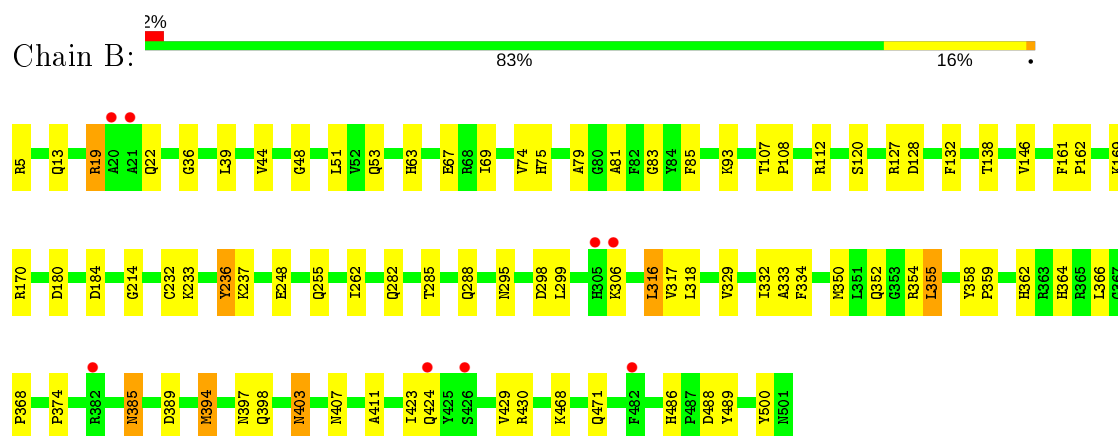
### 3 Residue-property plots

These plots are drawn for all protein, RNA and DNA chains in the entry. The first graphic for a chain summarises the proportions of the various outlier classes displayed in the second graphic. The second graphic shows the sequence view annotated by issues in geometry and electron density. Residues are color-coded according to the number of geometric quality criteria for which they contain at least one outlier: green = 0, yellow = 1, orange = 2 and red = 3 or more. A red dot above a residue indicates a poor fit to the electron density ( $RSRZ > 2$ ). Stretches of 2 or more consecutive residues without any outlier are shown as a green connector. Residues present in the sample, but not in the model, are shown in grey.

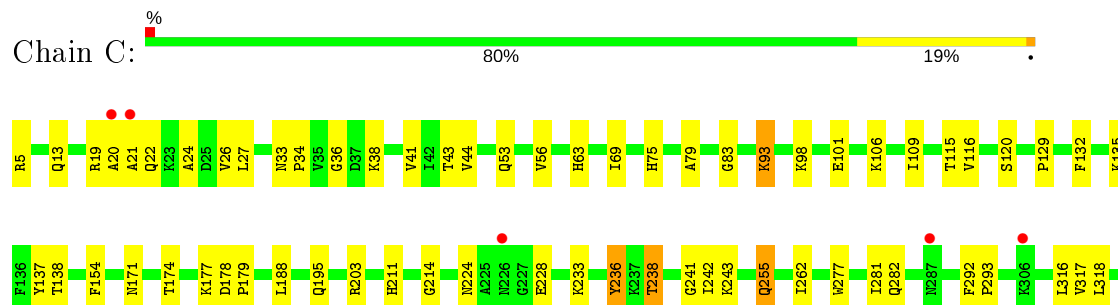
#### • Molecule 1: CATALASE

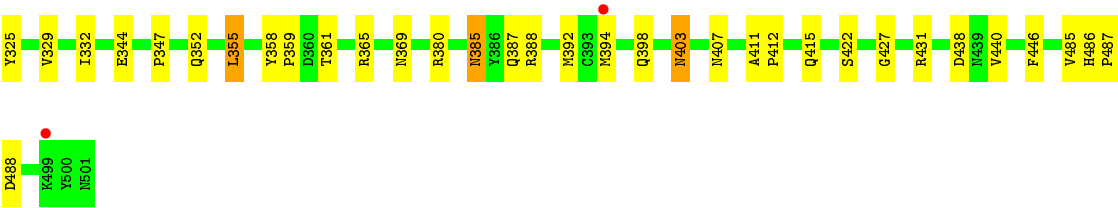


#### • Molecule 1: CATALASE

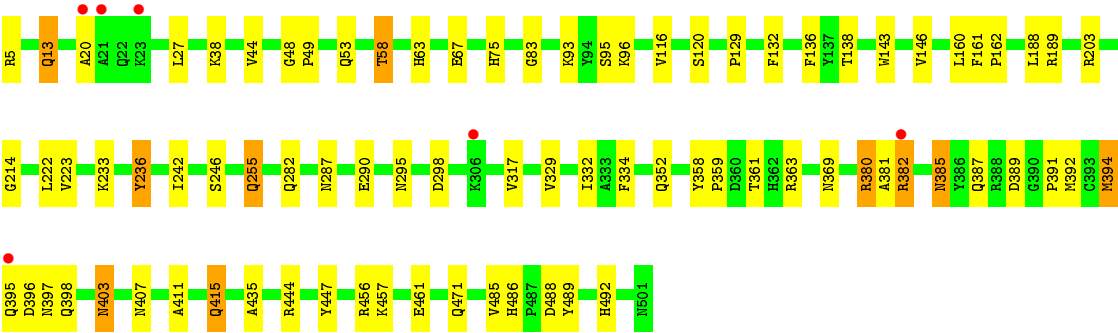
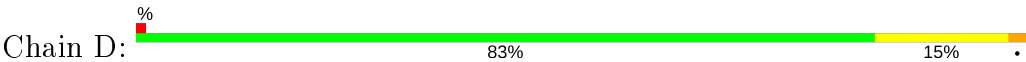


#### • Molecule 1: CATALASE





● Molecule 1: CATALASE





## 4 Data and refinement statistics

Property	Value	Source
Space group	P 21 21 21	Depositor
Cell constants a, b, c, $\alpha$ , $\beta$ , $\gamma$	83.86Å 140.61Å 231.59Å 90.00° 90.00° 90.00°	Depositor
Resolution (Å)	20.00 – 1.80 19.91 – 1.80	Depositor EDS
% Data completeness (in resolution range)	(Not available) (20.00-1.80) 78.3 (19.91-1.80)	Depositor EDS
$R_{merge}$	(Not available)	Depositor
$R_{sym}$	0.04	Depositor
$\langle I/\sigma(I) \rangle$ <sup>1</sup>	0.12 (at 1.80Å)	Xtriage
Refinement program	X-PLOR 3.851	Depositor
R, $R_{free}$	0.178 , 0.221 0.170 , (Not available)	Depositor DCC
$R_{free}$ test set	No test flags present.	wwPDB-VP
Wilson B-factor (Å <sup>2</sup> )	43.9	Xtriage
Anisotropy	0.074	Xtriage
Bulk solvent $k_{sol}$ (e/Å <sup>3</sup> ), $B_{sol}$ (Å <sup>2</sup> )	0.34 , 48.7	EDS
L-test for twinning <sup>2</sup>	$\langle  L  \rangle = 0.45$ , $\langle L^2 \rangle = 0.28$	Xtriage
Estimated twinning fraction	No twinning to report.	Xtriage
$F_o, F_c$ correlation	0.98	EDS
Total number of atoms	17841	wwPDB-VP
Average B, all atoms (Å <sup>2</sup> )	43.0	wwPDB-VP

Xtriage's analysis on translational NCS is as follows: *The largest off-origin peak in the Patterson function is 2.66% of the height of the origin peak. No significant pseudotranslation is detected.*

<sup>1</sup>Intensities estimated from amplitudes.

<sup>2</sup>Theoretical values of  $\langle |L| \rangle$ ,  $\langle L^2 \rangle$  for acentric reflections are 0.5, 0.333 respectively for untwinned datasets, and 0.375, 0.2 for perfectly twinned datasets.

## 5 Model quality [i](#)

### 5.1 Standard geometry [i](#)

Bond lengths and bond angles in the following residue types are not validated in this section: NDP, CYN, HEM

The Z score for a bond length (or angle) is the number of standard deviations the observed value is removed from the expected value. A bond length (or angle) with  $|Z| > 5$  is considered an outlier worth inspection. RMSZ is the root-mean-square of all Z scores of the bond lengths (or angles).

Mol	Chain	Bond lengths		Bond angles	
		RMSZ	$\# Z  > 5$	RMSZ	$\# Z  > 5$
1	A	0.37	0/4137	0.63	0/5620
1	B	0.36	0/4137	0.61	0/5620
1	C	0.36	0/4137	0.62	0/5620
1	D	0.36	0/4137	0.61	0/5620
All	All	0.36	0/16548	0.62	0/22480

There are no bond length outliers.

There are no bond angle outliers.

There are no chirality outliers.

There are no planarity outliers.

### 5.2 Too-close contacts [i](#)

In the following table, the Non-H and H(model) columns list the number of non-hydrogen atoms and hydrogen atoms in the chain respectively. The H(added) column lists the number of hydrogen atoms added and optimized by MolProbity. The Clashes column lists the number of clashes within the asymmetric unit, whereas Symm-Clashes lists symmetry related clashes.

Mol	Chain	Non-H	H(model)	H(added)	Clashes	Symm-Clashes
1	A	4018	0	3845	68	0
1	B	4018	0	3845	68	0
1	C	4018	0	3845	78	0
1	D	4018	0	3845	74	0
2	A	2	0	0	4	0
2	B	2	0	0	4	0
2	C	2	0	0	4	0
2	D	2	0	0	4	0
3	A	43	0	30	5	0

*Continued on next page...*

*Continued from previous page...*

Mol	Chain	Non-H	H(model)	H(added)	Clashes	Symm-Clashes
3	B	43	0	30	5	0
3	C	43	0	30	4	0
3	D	43	0	30	4	0
4	A	48	0	26	0	0
4	C	48	0	26	1	0
5	A	381	0	0	8	0
5	B	380	0	0	5	0
5	C	366	0	0	12	0
5	D	366	0	0	7	0
All	All	17841	0	15552	261	0

The all-atom clashscore is defined as the number of clashes found per 1000 atoms (including hydrogen atoms). The all-atom clashscore for this structure is 8.

All (261) close contacts within the same asymmetric unit are listed below, sorted by their clash magnitude.

Atom-1	Atom-2	Interatomic distance (Å)	Clash overlap (Å)
1:D:382:ARG:H	1:D:382:ARG:HD3	1.13	1.10
1:A:120[B]:SER:O	1:C:120[B]:SER:O	1.78	0.99
2:A:4000:CYN:C	3:A:2000:HEM:NB	2.26	0.98
1:B:120[B]:SER:O	1:D:120[B]:SER:O	1.87	0.91
1:B:385:ASN:H	1:B:398:GLN:HE22	1.20	0.89
2:C:4002:CYN:C	3:C:2002:HEM:ND	2.38	0.86
2:B:4001:CYN:C	3:B:2001:HEM:ND	2.39	0.85
1:C:63:HIS:HE1	1:D:369:ASN:HD21	1.24	0.84
2:D:4003:CYN:C	3:D:2003:HEM:ND	2.40	0.84
2:B:4001:CYN:C	3:B:2001:HEM:NA	2.42	0.83
1:D:486:HIS:HD2	1:D:488:ASP:H	1.27	0.83
2:C:4002:CYN:C	3:C:2002:HEM:NC	2.42	0.83
1:C:385:ASN:H	1:C:398:GLN:HE22	1.23	0.82
1:B:19:ARG:HH21	1:B:19:ARG:HG3	1.47	0.80
1:A:369:ASN:HD21	1:B:63:HIS:HE1	1.27	0.80
2:D:4003:CYN:C	3:D:2003:HEM:NC	2.46	0.78
1:B:13:GLN:HG2	1:D:471:GLN:NE2	1.98	0.78
1:D:385:ASN:H	1:D:398:GLN:HE22	1.30	0.78
2:A:4000:CYN:C	3:A:2000:HEM:NA	2.46	0.77
2:A:4000:CYN:C	3:A:2000:HEM:NC	2.48	0.77
1:B:19:ARG:O	1:B:22:GLN:HG2	1.85	0.77
1:A:385:ASN:H	1:A:398:GLN:HE22	1.30	0.77
1:C:63:HIS:HE1	1:D:369:ASN:ND2	1.83	0.76
1:A:169:LYS:HB3	5:A:4145:HOH:O	1.86	0.76

*Continued on next page...*

*Continued from previous page...*

Atom-1	Atom-2	Interatomic distance (Å)	Clash overlap (Å)
2:D:4003:CYN:C	3:D:2003:HEM:NB	2.49	0.76
1:D:382:ARG:CD	1:D:382:ARG:H	1.97	0.75
2:C:4002:CYN:C	3:C:2002:HEM:NA	2.50	0.75
2:A:4000:CYN:C	3:A:2000:HEM:ND	2.50	0.75
1:B:13:GLN:HG2	1:D:471:GLN:HE22	1.51	0.73
1:A:394:MET:HE2	1:B:394:MET:HB2	1.69	0.73
1:C:369:ASN:ND2	1:D:63:HIS:HE1	1.86	0.73
1:C:34:PRO:HG3	1:D:382:ARG:HH22	1.53	0.73
2:C:4002:CYN:C	3:C:2002:HEM:NB	2.51	0.73
1:D:116:VAL:HG21	1:D:129:PRO:HG2	1.71	0.72
1:C:116:VAL:HG21	1:C:129:PRO:HG2	1.72	0.72
1:C:369:ASN:HD21	1:D:63:HIS:HE1	1.35	0.72
2:B:4001:CYN:C	3:B:2001:HEM:NB	2.53	0.71
2:B:4001:CYN:C	3:B:2001:HEM:NC	2.55	0.68
5:C:4348:HOH:O	1:D:382:ARG:HG2	1.93	0.68
1:A:369:ASN:ND2	1:B:63:HIS:HE1	1.90	0.68
1:D:382:ARG:HD3	1:D:382:ARG:N	1.97	0.67
1:C:63:HIS:HD2	5:C:4033:HOH:O	1.80	0.65
2:D:4003:CYN:C	3:D:2003:HEM:NA	2.59	0.65
1:B:486:HIS:HD2	1:B:488:ASP:H	1.43	0.64
1:A:53:GLN:HE21	1:B:352:GLN:HE22	1.45	0.64
1:D:58:THR:HG21	5:D:4076:HOH:O	1.98	0.64
1:B:63:HIS:HD2	5:B:4015:HOH:O	1.80	0.64
1:B:407:ASN:HD21	1:B:411:ALA:HB3	1.62	0.64
1:B:19:ARG:CG	1:B:19:ARG:HH21	2.10	0.63
1:B:471:GLN:NE2	1:D:13:GLN:HG2	2.14	0.63
1:B:255:GLN:HB2	1:D:255:GLN:HB2	1.82	0.62
1:D:389:ASP:H	1:D:397:ASN:HD21	1.48	0.61
1:A:116:VAL:HG21	1:A:129:PRO:HG2	1.82	0.61
1:B:364:HIS:HD2	5:C:4095:HOH:O	1.84	0.61
1:D:295:ASN:HB3	1:D:298:ASP:HB2	1.84	0.60
1:B:424:GLN:HE21	1:C:427:GLY:H	1.50	0.58
1:D:380:ARG:HB3	1:D:380:ARG:HH11	1.68	0.58
1:A:16:LYS:HE3	5:B:4326:HOH:O	2.02	0.58
1:C:329:VAL:O	1:C:332:ILE:HG22	2.04	0.57
1:A:306:LYS:HB2	5:A:4335:HOH:O	2.05	0.57
1:A:407:ASN:HD21	1:A:411:ALA:HB3	1.70	0.57
1:A:91:ILE:HG21	1:A:313:VAL:HG22	1.86	0.57
1:A:454:GLU:HB3	1:A:458:ARG:HH21	1.70	0.57
1:A:394:MET:HB2	1:B:394:MET:HE2	1.87	0.56
1:A:471:GLN:HE22	1:C:13:GLN:HG2	1.70	0.56

*Continued on next page...*

*Continued from previous page...*

Atom-1	Atom-2	Interatomic distance (Å)	Clash overlap (Å)
1:C:63:HIS:CE1	1:D:369:ASN:HD21	2.13	0.56
1:B:385:ASN:H	1:B:398:GLN:NE2	1.98	0.56
1:D:444:ARG:HD3	1:D:485:VAL:O	2.04	0.56
1:B:295:ASN:HB3	1:B:298:ASP:HB2	1.87	0.56
1:D:486:HIS:CD2	1:D:488:ASP:HB3	2.41	0.56
1:D:380:ARG:CB	1:D:380:ARG:HH11	2.19	0.56
1:A:51:LEU:HD23	1:D:49:PRO:HB2	1.88	0.56
1:A:444:ARG:HD3	1:A:485:VAL:O	2.07	0.55
1:C:369:ASN:HD21	1:D:63:HIS:CE1	2.21	0.55
1:A:21:ALA:O	1:A:22:GLN:HB2	2.07	0.55
1:D:161:PHE:HB3	1:D:162:PRO:HD3	1.89	0.55
1:A:33:ASN:HB3	5:B:4368:HOH:O	2.06	0.54
1:A:471:GLN:NE2	1:C:13:GLN:HG2	2.23	0.54
1:B:83:GLY:HA3	1:B:317:VAL:O	2.08	0.54
1:A:255:GLN:HB2	1:C:255:GLN:HB2	1.90	0.54
1:B:389:ASP:H	1:B:397:ASN:HD21	1.56	0.54
1:B:471:GLN:HE22	1:D:13:GLN:HG2	1.71	0.54
5:C:4229:HOH:O	1:D:392:MET:HE2	2.08	0.53
1:A:153:PHE:CB	1:A:299:LEU:HD13	2.39	0.53
1:A:83:GLY:HA3	1:A:317:VAL:O	2.08	0.53
1:B:237:LYS:HE2	5:B:4321:HOH:O	2.08	0.53
1:A:66:ARG:HD3	1:B:368:PRO:HG3	1.91	0.53
1:A:385:ASN:ND2	1:A:387:GLN:H	2.08	0.52
1:B:146:VAL:HG22	1:B:334:PHE:HB3	1.91	0.52
1:C:116:VAL:CG2	1:C:129:PRO:HG2	2.40	0.52
1:A:352:GLN:HA	1:A:355:LEU:HD22	1.91	0.52
1:B:44:VAL:O	1:B:48:GLY:HA3	2.10	0.52
1:C:486:HIS:HD2	1:C:488:ASP:H	1.58	0.52
1:C:392:MET:HB3	1:C:394:MET:HE1	1.91	0.52
1:A:177:LYS:HG3	5:A:4257:HOH:O	2.08	0.51
1:A:101:GLU:HG3	1:A:102:HIS:CD2	2.45	0.51
1:B:161:PHE:HB3	1:B:162:PRO:HD3	1.91	0.51
1:A:350:MET:O	1:A:354:ARG:HG3	2.10	0.51
1:D:96:LYS:HG2	1:D:223:VAL:O	2.10	0.51
1:A:329:VAL:O	1:A:332:ILE:HG22	2.11	0.51
1:A:486:HIS:HD2	1:A:488:ASP:H	1.57	0.51
1:C:233:LYS:HB2	1:C:282:GLN:HB2	1.91	0.51
1:C:344:GLU:HG2	5:C:4354:HOH:O	2.10	0.51
1:B:233:LYS:HB2	1:B:282:GLN:HB2	1.92	0.51
1:D:44:VAL:CG1	1:D:49:PRO:HD2	2.41	0.51
1:C:154:PHE:CE2	1:C:195:GLN:HG3	2.46	0.50

*Continued on next page...*

*Continued from previous page...*

Atom-1	Atom-2	Interatomic distance (Å)	Clash overlap (Å)
1:B:352:GLN:HA	1:B:355:LEU:HD22	1.92	0.50
1:C:19:ARG:NH2	1:C:24:ALA:HA	2.26	0.50
1:D:457:LYS:O	1:D:461:GLU:HG2	2.11	0.50
1:A:486:HIS:CD2	1:A:488:ASP:HB3	2.47	0.50
1:A:415:GLN:O	1:B:36:GLY:HA2	2.11	0.50
1:D:63:HIS:HD2	5:D:4035:HOH:O	1.94	0.50
1:D:381:ALA:HB1	1:D:382:ARG:HH11	1.77	0.50
1:D:486:HIS:CD2	1:D:488:ASP:H	2.18	0.49
1:A:153:PHE:HB3	1:A:299:LEU:HD13	1.94	0.49
1:B:430:ARG:HB3	1:C:422:SER:HB3	1.95	0.49
1:D:189:ARG:HH22	1:D:435:ALA:HB2	1.77	0.49
1:D:395:GLN:HG3	1:D:396:ASP:H	1.77	0.49
1:D:44:VAL:O	1:D:48:GLY:HA3	2.13	0.49
1:A:85:PHE:O	1:A:106:LYS:HA	2.13	0.49
1:D:359:PRO:O	1:D:363:ARG:HG3	2.12	0.49
1:C:44:VAL:O	1:C:44:VAL:HG13	2.13	0.49
1:A:486:HIS:HD2	1:A:488:ASP:HB3	1.78	0.49
1:D:385:ASN:ND2	1:D:387:GLN:H	2.11	0.49
1:A:349:LYS:HE2	1:C:43:THR:HG21	1.94	0.49
1:B:329:VAL:O	1:B:332:ILE:HG22	2.13	0.49
1:D:407:ASN:HD21	1:D:411:ALA:HB3	1.77	0.48
1:A:237:LYS:HD2	5:A:4265:HOH:O	2.12	0.48
1:B:232:CYS:HA	1:B:282:GLN:O	2.13	0.48
1:D:385:ASN:HD22	1:D:387:GLN:H	1.61	0.48
1:D:44:VAL:HG13	1:D:49:PRO:HD2	1.96	0.48
1:A:299:LEU:HD12	1:A:350:MET:HG3	1.96	0.48
1:C:98:LYS:O	1:C:101:GLU:HG2	2.13	0.48
1:A:251:ALA:O	1:C:255:GLN:HG3	2.13	0.48
1:C:238:THR:HA	1:C:277:TRP:CD1	2.48	0.48
1:C:385:ASN:H	1:C:398:GLN:NE2	2.03	0.48
1:A:361:THR:HG21	3:A:2000:HEM:HBA1	1.94	0.48
1:C:403:ASN:HD22	1:C:403:ASN:C	2.17	0.48
1:C:106:LYS:HE3	5:C:4304:HOH:O	2.13	0.47
1:A:389:ASP:H	1:A:397:ASN:HD21	1.61	0.47
1:C:79:ALA:HB2	1:C:262:ILE:HG12	1.96	0.47
1:C:233:LYS:O	1:C:281:ILE:HA	2.14	0.47
1:A:352:GLN:HE22	1:B:53:GLN:HE21	1.61	0.47
1:B:407:ASN:ND2	1:B:411:ALA:HB3	2.30	0.47
1:C:325:TYR:HD2	5:C:4363:HOH:O	1.96	0.47
1:D:203:ARG:HE	1:D:242:ILE:HG21	1.80	0.47
1:D:380:ARG:HH11	1:D:380:ARG:CG	2.28	0.46

*Continued on next page...*

*Continued from previous page...*

Atom-1	Atom-2	Interatomic distance (Å)	Clash overlap (Å)
1:A:480:LYS:HA	5:A:4359:HOH:O	2.14	0.46
1:D:246:SER:HB2	5:D:4331:HOH:O	2.15	0.46
1:D:486:HIS:HD2	1:D:488:ASP:N	2.06	0.46
1:C:224:ASN:HD21	1:C:228:GLU:HB2	1.80	0.46
1:C:83:GLY:HA3	1:C:317:VAL:O	2.16	0.46
1:B:403:ASN:C	1:B:403:ASN:HD22	2.18	0.46
1:B:430:ARG:HB3	1:C:422:SER:CB	2.45	0.46
1:D:83:GLY:HA3	1:D:317:VAL:O	2.15	0.46
1:B:81:ALA:HB3	1:B:318:LEU:HD13	1.96	0.46
1:A:385:ASN:HD22	1:A:387:GLN:H	1.62	0.46
1:C:440:VAL:HG12	1:C:485:VAL:HG22	1.97	0.46
1:D:95:SER:HB2	1:D:222:LEU:HB3	1.98	0.46
1:A:486:HIS:CD2	1:A:488:ASP:H	2.34	0.45
1:C:388:ARG:O	1:D:67:GLU:HG2	2.16	0.45
1:C:385:ASN:ND2	1:C:387:GLN:H	2.14	0.45
1:B:429:VAL:O	1:B:429:VAL:HG12	2.16	0.45
1:C:394:MET:HE2	1:D:394:MET:SD	2.56	0.45
1:C:93:LYS:HB3	5:C:4311:HOH:O	2.16	0.45
1:B:385:ASN:HD22	1:B:385:ASN:C	2.19	0.45
1:D:233:LYS:HB2	1:D:282:GLN:HB2	1.97	0.45
1:D:385:ASN:H	1:D:398:GLN:NE2	2.07	0.45
1:C:446:PHE:HB2	4:C:3001:NDP:O2D	2.16	0.45
1:D:394:MET:O	1:D:395:GLN:HB2	2.15	0.45
1:B:214:GLY:HA3	1:B:236:TYR:CE1	2.52	0.45
1:C:137:TYR:O	1:C:380:ARG:HD3	2.17	0.45
1:C:171:ASN:HB3	1:C:174:THR:OG1	2.17	0.45
1:C:407:ASN:HD21	1:C:411:ALA:HB3	1.82	0.44
1:A:21:ALA:O	1:A:22:GLN:CB	2.65	0.44
1:B:468:LYS:HD3	1:B:500:TYR:CD1	2.52	0.44
1:C:75:HIS:HA	1:C:115:THR:O	2.17	0.44
1:A:385:ASN:HD22	1:A:385:ASN:C	2.21	0.44
1:B:352:GLN:O	1:B:355:LEU:HB2	2.17	0.44
1:C:56:VAL:HG23	5:D:4091:HOH:O	2.17	0.44
1:D:398:GLN:NE2	5:D:4083:HOH:O	2.48	0.44
1:C:352:GLN:O	1:C:355:LEU:HB2	2.16	0.44
1:C:27:LEU:HD21	1:C:38:LYS:HD3	2.00	0.44
1:B:423:ILE:HG22	1:B:424:GLN:N	2.33	0.44
1:C:36:GLY:HA2	1:D:415:GLN:O	2.18	0.43
1:D:447:TYR:CZ	1:D:456:ARG:HD2	2.53	0.43
1:D:146:VAL:HG22	1:D:334:PHE:HB3	2.00	0.43
1:C:203:ARG:CZ	1:C:242:ILE:HD13	2.48	0.43

*Continued on next page...*

*Continued from previous page...*

Atom-1	Atom-2	Interatomic distance (Å)	Clash overlap (Å)
1:A:352:GLN:O	1:A:355:LEU:HB2	2.18	0.43
1:B:306:LYS:HG3	5:B:4377:HOH:O	2.18	0.43
1:C:415:GLN:O	1:C:415:GLN:HG3	2.18	0.43
1:A:79:ALA:HB2	1:A:262:ILE:HG12	1.99	0.43
1:A:369:ASN:HD21	1:B:63:HIS:CE1	2.19	0.43
1:A:178:ASP:HA	1:A:179:PRO:HD2	1.93	0.43
1:B:127:ARG:O	1:B:128:ASP:HB2	2.18	0.43
1:A:37:ASP:HB3	1:C:431:ARG:HD2	2.00	0.43
1:D:389:ASP:N	1:D:397:ASN:HD21	2.14	0.43
1:D:27:LEU:HD21	1:D:38:LYS:HD3	2.00	0.43
1:A:358:TYR:HB2	1:A:359:PRO:HD3	2.00	0.42
1:C:211:HIS:HB3	1:C:243:LYS:H	1.84	0.42
1:D:329:VAL:O	1:D:332:ILE:HG22	2.19	0.42
1:C:385:ASN:C	1:C:385:ASN:HD22	2.23	0.42
1:C:69:ILE:HG22	1:D:391:PRO:HG3	2.01	0.42
1:A:153:PHE:HB2	1:A:299:LEU:HD13	2.02	0.42
5:A:4219:HOH:O	1:B:39:LEU:HD12	2.19	0.42
1:A:101:GLU:HG3	1:A:102:HIS:HD2	1.84	0.42
1:C:69:ILE:HA	5:C:4293:HOH:O	2.19	0.42
1:B:85:PHE:HD1	1:B:316:LEU:HD13	1.85	0.42
1:B:74:VAL:O	1:B:75:HIS:HB2	2.19	0.42
1:A:192:SER:O	1:A:196:VAL:HG23	2.20	0.42
1:B:248:GLU:CD	1:B:248:GLU:H	2.22	0.42
1:B:79:ALA:HB2	1:B:262:ILE:HG12	2.02	0.42
1:B:352:GLN:HG3	5:D:4188:HOH:O	2.19	0.42
1:A:44:VAL:O	1:A:48:GLY:HA3	2.20	0.42
1:A:251:ALA:HB2	5:A:4303:HOH:O	2.18	0.41
1:C:292:PHE:HA	1:C:293:PRO:HD3	1.86	0.41
1:C:385:ASN:HD22	1:C:387:GLN:H	1.67	0.41
1:B:44:VAL:HG21	1:C:44:VAL:HG21	2.01	0.41
1:A:407:ASN:ND2	1:A:411:ALA:HB3	2.35	0.41
1:C:365:ARG:HD2	5:C:4046:HOH:O	2.20	0.41
1:C:411:ALA:HB1	1:C:412:PRO:HD2	2.02	0.41
1:D:136:PHE:HD1	1:D:143:TRP:O	2.03	0.41
1:B:180:ASP:O	1:B:184:ASP:HB2	2.19	0.41
1:B:44:VAL:HG13	1:B:44:VAL:O	2.19	0.41
1:C:178:ASP:HA	1:C:179:PRO:HD2	1.93	0.41
1:B:51:LEU:N	1:B:51:LEU:HD12	2.35	0.41
1:C:211:HIS:HD2	1:C:241:GLY:O	2.03	0.41
1:C:347:PRO:HD3	5:C:4355:HOH:O	2.20	0.41
1:C:33:ASN:HA	1:C:34:PRO:HD3	1.96	0.41

*Continued on next page...*



*Continued from previous page...*

Atom-1	Atom-2	Interatomic distance (Å)	Clash overlap (Å)
1:D:403:ASN:C	1:D:403:ASN:HD22	2.22	0.41
1:B:107:THR:HA	1:B:108:PRO:HD3	1.92	0.41
1:C:358:TYR:O	1:C:361:THR:HG22	2.21	0.41
1:C:411:ALA:HB1	1:C:412:PRO:CD	2.50	0.41
1:D:358:TYR:O	1:D:361:THR:HG22	2.21	0.41
1:C:358:TYR:HB2	1:C:359:PRO:HD3	2.02	0.41
1:A:356:PHE:O	1:A:359:PRO:HD2	2.20	0.41
1:A:75:HIS:HA	1:A:115:THR:O	2.21	0.41
1:B:169:LYS:HB3	1:B:170:ARG:H	1.73	0.41
1:C:109:ILE:HA	1:C:135:LYS:O	2.21	0.41
1:C:177:LYS:HE2	5:C:4098:HOH:O	2.19	0.41
1:A:430:ARG:HB2	5:A:4164:HOH:O	2.20	0.41
1:C:214:GLY:HA3	1:C:236:TYR:CD1	2.55	0.41
1:D:203:ARG:NH2	5:D:4289:HOH:O	2.54	0.41
1:A:161:PHE:HB3	1:A:162:PRO:HD3	2.01	0.41
1:A:183:TRP:CD2	1:A:467:LEU:HD13	2.56	0.41
1:D:287:ASN:O	1:D:290:GLU:HB2	2.20	0.41
1:C:26:VAL:HG22	1:D:415:GLN:OE1	2.21	0.40
1:B:350:MET:O	1:B:354:ARG:HG3	2.20	0.40
1:A:388:ARG:O	1:B:67:GLU:HG2	2.22	0.40
1:C:355:LEU:HD23	1:D:53:GLN:HA	2.02	0.40
1:C:486:HIS:HA	1:C:487:PRO:HD2	1.94	0.40
1:A:391:PRO:HG3	1:B:69:ILE:HG22	2.02	0.40
1:D:214:GLY:HA3	1:D:236:TYR:CE1	2.56	0.40
1:B:112:ARG:HD3	3:B:2001:HEM:O1D	2.21	0.40
1:C:53:GLN:HE21	1:D:352:GLN:HE22	1.68	0.40
1:D:385:ASN:C	1:D:385:ASN:HD22	2.25	0.40
1:D:75:HIS:CE1	1:D:116:VAL:HG22	2.57	0.40
1:A:297:PHE:CD2	1:A:347:PRO:HG2	2.57	0.40
1:B:285:THR:OG1	1:B:288:GLN:HG3	2.21	0.40
1:B:358:TYR:HB2	1:B:359:PRO:HD3	2.03	0.40
1:B:333:ALA:HB1	1:B:362:HIS:CE1	2.57	0.40

There are no symmetry-related clashes.

## 5.3 Torsion angles ⓘ

### 5.3.1 Protein backbone ⓘ

In the following table, the Percentiles column shows the percent Ramachandran outliers of the chain as a percentile score with respect to all X-ray entries followed by that with respect to entries

of similar resolution.

The Analysed column shows the number of residues for which the backbone conformation was analysed, and the total number of residues.

Mol	Chain	Analysed	Favoured	Allowed	Outliers	Percentiles	
1	A	498/497 (100%)	476 (96%)	20 (4%)	2 (0%)	34	21
1	B	498/497 (100%)	476 (96%)	22 (4%)	0	100	100
1	C	498/497 (100%)	475 (95%)	19 (4%)	4 (1%)	19	7
1	D	498/497 (100%)	470 (94%)	27 (5%)	1 (0%)	47	33
All	All	1992/1988 (100%)	1897 (95%)	88 (4%)	7 (0%)	34	21

All (7) Ramachandran outliers are listed below:

Mol	Chain	Res	Type
1	A	22	GLN
1	C	20	ALA
1	C	22	GLN
1	D	20	ALA
1	A	20	ALA
1	C	21	ALA
1	C	438	ASP

### 5.3.2 Protein sidechains ⓘ

In the following table, the Percentiles column shows the percent sidechain outliers of the chain as a percentile score with respect to all X-ray entries followed by that with respect to entries of similar resolution.

The Analysed column shows the number of residues for which the sidechain conformation was analysed, and the total number of residues.

Mol	Chain	Analysed	Rotameric	Outliers	Percentiles	
1	A	430/428 (100%)	412 (96%)	18 (4%)	30	15
1	B	430/428 (100%)	415 (96%)	15 (4%)	36	21
1	C	430/428 (100%)	416 (97%)	14 (3%)	38	23
1	D	430/428 (100%)	412 (96%)	18 (4%)	30	15
All	All	1720/1712 (100%)	1655 (96%)	65 (4%)	33	18

All (65) residues with a non-rotameric sidechain are listed below:

Mol	Chain	Res	Type
1	A	5	ARG
1	A	44	VAL
1	A	74	VAL
1	A	93	LYS
1	A	132	PHE
1	A	145	LEU
1	A	160	LEU
1	A	226	ASN
1	A	236	TYR
1	A	243	LYS
1	A	265	LEU
1	A	299	LEU
1	A	318	LEU
1	A	355	LEU
1	A	382	ARG
1	A	385	ASN
1	A	394	MET
1	A	489	TYR
1	B	5	ARG
1	B	19	ARG
1	B	93	LYS
1	B	132	PHE
1	B	138	THR
1	B	236	TYR
1	B	299	LEU
1	B	316	LEU
1	B	355	LEU
1	B	366	LEU
1	B	374	PRO
1	B	385	ASN
1	B	394	MET
1	B	403	ASN
1	B	489	TYR
1	C	5	ARG
1	C	41	VAL
1	C	93	LYS
1	C	132	PHE
1	C	138	THR
1	C	188	LEU
1	C	236	TYR
1	C	238	THR
1	C	255	GLN
1	C	316	LEU

*Continued on next page...*

*Continued from previous page...*

Mol	Chain	Res	Type
1	C	318	LEU
1	C	355	LEU
1	C	385	ASN
1	C	403	ASN
1	D	5	ARG
1	D	13	GLN
1	D	58	THR
1	D	93	LYS
1	D	132	PHE
1	D	138	THR
1	D	160	LEU
1	D	188	LEU
1	D	236	TYR
1	D	255	GLN
1	D	380	ARG
1	D	382	ARG
1	D	385	ASN
1	D	394	MET
1	D	403	ASN
1	D	415	GLN
1	D	489	TYR
1	D	492	HIS

Some sidechains can be flipped to improve hydrogen bonding and reduce clashes. All (54) such sidechains are listed below:

Mol	Chain	Res	Type
1	A	53	GLN
1	A	102	HIS
1	A	226	ASN
1	A	369	ASN
1	A	385	ASN
1	A	397	ASN
1	A	398	GLN
1	A	449	ASN
1	A	471	GLN
1	A	475	GLN
1	A	486	HIS
1	A	501	ASN
1	B	22	GLN
1	B	40	ASN
1	B	53	GLN
1	B	63	HIS

*Continued on next page...*

*Continued from previous page...*

Mol	Chain	Res	Type
1	B	305	HIS
1	B	364	HIS
1	B	385	ASN
1	B	397	ASN
1	B	398	GLN
1	B	403	ASN
1	B	421	HIS
1	B	424	GLN
1	B	471	GLN
1	B	475	GLN
1	B	486	HIS
1	B	501	ASN
1	C	18	GLN
1	C	40	ASN
1	C	53	GLN
1	C	63	HIS
1	C	211	HIS
1	C	226	ASN
1	C	369	ASN
1	C	385	ASN
1	C	398	GLN
1	C	403	ASN
1	C	424	GLN
1	C	475	GLN
1	C	486	HIS
1	C	501	ASN
1	D	18	GLN
1	D	63	HIS
1	D	226	ASN
1	D	369	ASN
1	D	385	ASN
1	D	397	ASN
1	D	398	GLN
1	D	403	ASN
1	D	471	GLN
1	D	475	GLN
1	D	486	HIS
1	D	501	ASN

### 5.3.3 RNA ⓘ

There are no RNA molecules in this entry.

## 5.4 Non-standard residues in protein, DNA, RNA chains [i](#)

There are no non-standard protein/DNA/RNA residues in this entry.

## 5.5 Carbohydrates [i](#)

There are no carbohydrates in this entry.

## 5.6 Ligand geometry [i](#)

10 ligands are modelled in this entry.

In the following table, the Counts columns list the number of bonds (or angles) for which Mogul statistics could be retrieved, the number of bonds (or angles) that are observed in the model and the number of bonds (or angles) that are defined in the Chemical Component Dictionary. The Link column lists molecule types, if any, to which the group is linked. The Z score for a bond length (or angle) is the number of standard deviations the observed value is removed from the expected value. A bond length (or angle) with  $|Z| > 2$  is considered an outlier worth inspection. RMSZ is the root-mean-square of all Z scores of the bond lengths (or angles).

Mol	Type	Chain	Res	Link	Bond lengths			Bond angles		
					Counts	RMSZ	# $ Z  > 2$	Counts	RMSZ	# $ Z  > 2$
2	CYN	D	4003	3	0,1,1	0.00	-	-		
3	HEM	C	2002	1,2	27,50,50	1.65	2 (7%)	17,82,82	1.94	7 (41%)
4	NDP	C	3001	-	45,52,52	1.44	4 (8%)	53,80,80	1.36	6 (11%)
2	CYN	C	4002	3	0,1,1	0.00	-	-		
4	NDP	A	3000	-	45,52,52	1.42	5 (11%)	53,80,80	1.16	4 (7%)
3	HEM	A	2000	1,2	27,50,50	1.60	6 (22%)	17,82,82	1.34	3 (17%)
2	CYN	B	4001	3	0,1,1	0.00	-	-		
3	HEM	B	2001	1,2	27,50,50	1.78	3 (11%)	17,82,82	1.62	4 (23%)
2	CYN	A	4000	3	0,1,1	0.00	-	-		
3	HEM	D	2003	1,2	27,50,50	1.52	3 (11%)	17,82,82	2.28	7 (41%)

In the following table, the Chirals column lists the number of chiral outliers, the number of chiral centers analysed, the number of these observed in the model and the number defined in the Chemical Component Dictionary. Similar counts are reported in the Torsion and Rings columns. '-' means no outliers of that kind were identified.

Mol	Type	Chain	Res	Link	Chirals	Torsions	Rings
3	HEM	C	2002	1,2	-	0/6/54/54	-
4	NDP	C	3001	-	-	9/30/77/77	0/5/5/5
3	HEM	D	2003	1,2	-	0/6/54/54	-

*Continued on next page...*

*Continued from previous page...*

Mol	Type	Chain	Res	Link	Chirals	Torsions	Rings
4	NDP	A	3000	-	-	8/30/77/77	0/5/5/5
3	HEM	A	2000	1,2	-	0/6/54/54	-
3	HEM	B	2001	1,2	-	0/6/54/54	-

All (23) bond length outliers are listed below:

Mol	Chain	Res	Type	Atoms	Z	Observed(Å)	Ideal(Å)
3	B	2001	HEM	C3C-C2C	-5.17	1.33	1.40
3	B	2001	HEM	C3B-C2B	-4.92	1.33	1.40
4	A	3000	NDP	C4N-C3N	-4.84	1.40	1.49
3	C	2002	HEM	C3C-C2C	-4.82	1.33	1.40
3	A	2000	HEM	C3C-C2C	-4.79	1.33	1.40
3	D	2003	HEM	C3B-C2B	-4.74	1.33	1.40
4	C	3001	NDP	C4N-C3N	-4.50	1.41	1.49
3	C	2002	HEM	C3B-C2B	-4.33	1.34	1.40
4	C	3001	NDP	C6N-C5N	4.09	1.40	1.33
3	D	2003	HEM	C3C-C2C	-3.61	1.35	1.40
4	A	3000	NDP	C6N-C5N	3.59	1.39	1.33
3	A	2000	HEM	C3B-C2B	-3.39	1.35	1.40
4	A	3000	NDP	C4N-C5N	-3.15	1.40	1.48
4	C	3001	NDP	C4N-C5N	-3.06	1.40	1.48
3	B	2001	HEM	CAA-C2A	3.01	1.56	1.52
4	A	3000	NDP	C7N-C3N	2.95	1.55	1.48
4	C	3001	NDP	C7N-C3N	2.79	1.54	1.48
3	A	2000	HEM	C1D-ND	2.55	1.41	1.36
3	D	2003	HEM	C3C-CAC	2.41	1.52	1.47
4	A	3000	NDP	O4B-C1B	2.24	1.44	1.41
3	A	2000	HEM	C4B-NB	2.22	1.40	1.36
3	A	2000	HEM	CAA-C2A	2.14	1.55	1.52
3	A	2000	HEM	C1C-C2C	2.02	1.47	1.42

All (31) bond angle outliers are listed below:

Mol	Chain	Res	Type	Atoms	Z	Observed(°)	Ideal(°)
3	D	2003	HEM	CMD-C2D-C1D	-5.15	120.54	128.46
3	C	2002	HEM	CMA-C3A-C4A	-4.49	121.57	128.46
4	C	3001	NDP	N3A-C2A-N1A	-4.46	121.70	128.68
3	D	2003	HEM	C1D-C2D-C3D	3.83	109.66	107.00
3	D	2003	HEM	CMA-C3A-C4A	-3.77	122.67	128.46
4	A	3000	NDP	N3A-C2A-N1A	-3.72	122.86	128.68
3	C	2002	HEM	CMA-C3A-C2A	3.59	131.70	124.94
3	B	2001	HEM	CMA-C3A-C4A	-3.38	123.27	128.46

*Continued on next page...*

*Continued from previous page...*

Mol	Chain	Res	Type	Atoms	Z	Observed(°)	Ideal(°)
4	C	3001	NDP	C4A-C5A-N7A	3.05	112.57	109.40
3	D	2003	HEM	CMA-C3A-C2A	2.93	130.47	124.94
3	A	2000	HEM	CMB-C2B-C3B	2.85	130.01	124.68
4	A	3000	NDP	C4A-C5A-N7A	2.82	112.33	109.40
4	C	3001	NDP	C3D-C2D-C1D	2.81	106.77	101.43
3	A	2000	HEM	CMA-C3A-C4A	-2.66	124.38	128.46
3	D	2003	HEM	CMD-C2D-C3D	2.54	129.73	124.94
3	D	2003	HEM	CMB-C2B-C3B	2.53	129.42	124.68
3	C	2002	HEM	CMC-C2C-C3C	2.46	129.28	124.68
3	B	2001	HEM	CMD-C2D-C1D	-2.44	124.72	128.46
4	A	3000	NDP	C3D-C2D-C1D	2.40	105.99	101.43
4	A	3000	NDP	C5A-C6A-N1A	-2.33	115.07	120.35
4	C	3001	NDP	O4D-C1D-N1N	2.33	112.60	108.06
3	B	2001	HEM	C4A-C3A-C2A	2.31	108.61	107.00
3	C	2002	HEM	CBD-CAD-C3D	2.26	116.65	112.48
3	C	2002	HEM	CMB-C2B-C3B	2.25	128.89	124.68
3	A	2000	HEM	CMA-C3A-C2A	2.19	129.08	124.94
4	C	3001	NDP	O2B-P2B-O1X	-2.17	101.02	109.39
3	C	2002	HEM	CBA-CAA-C2A	-2.17	108.49	112.49
3	D	2003	HEM	CBD-CAD-C3D	2.16	116.47	112.48
4	C	3001	NDP	O5B-C5B-C4B	-2.05	101.93	108.99
3	C	2002	HEM	CMD-C2D-C1D	-2.05	125.32	128.46
3	B	2001	HEM	CMC-C2C-C3C	2.05	128.50	124.68

There are no chirality outliers.

All (17) torsion outliers are listed below:

Mol	Chain	Res	Type	Atoms
4	C	3001	NDP	C5D-O5D-PN-O3
4	C	3001	NDP	C5D-O5D-PN-O1N
4	A	3000	NDP	C5B-O5B-PA-O1A
4	C	3001	NDP	O4B-C4B-C5B-O5B
4	A	3000	NDP	O4D-C1D-N1N-C6N
4	C	3001	NDP	O4D-C1D-N1N-C6N
4	A	3000	NDP	O4B-C4B-C5B-O5B
4	A	3000	NDP	PA-O3-PN-O1N
4	C	3001	NDP	C5D-O5D-PN-O2N
4	C	3001	NDP	C3B-C2B-O2B-P2B
4	A	3000	NDP	C3B-C2B-O2B-P2B
4	C	3001	NDP	PN-O3-PA-O1A
4	C	3001	NDP	C3B-C4B-C5B-O5B
4	A	3000	NDP	C5B-O5B-PA-O3

*Continued on next page...*



*Continued from previous page...*

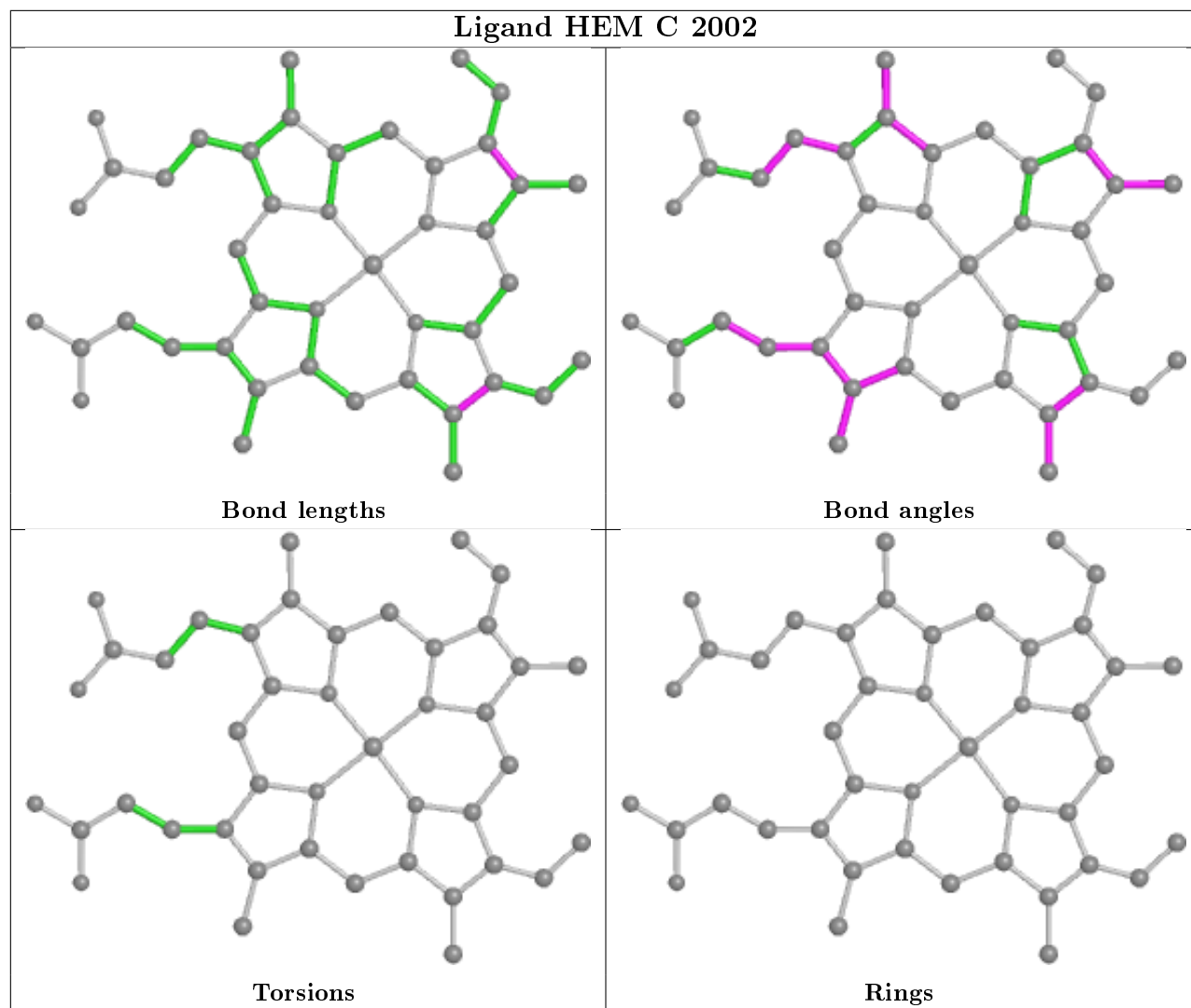
Mol	Chain	Res	Type	Atoms
4	C	3001	NDP	PN-O3-PA-O2A
4	A	3000	NDP	PA-O3-PN-O2N
4	A	3000	NDP	C3B-C4B-C5B-O5B

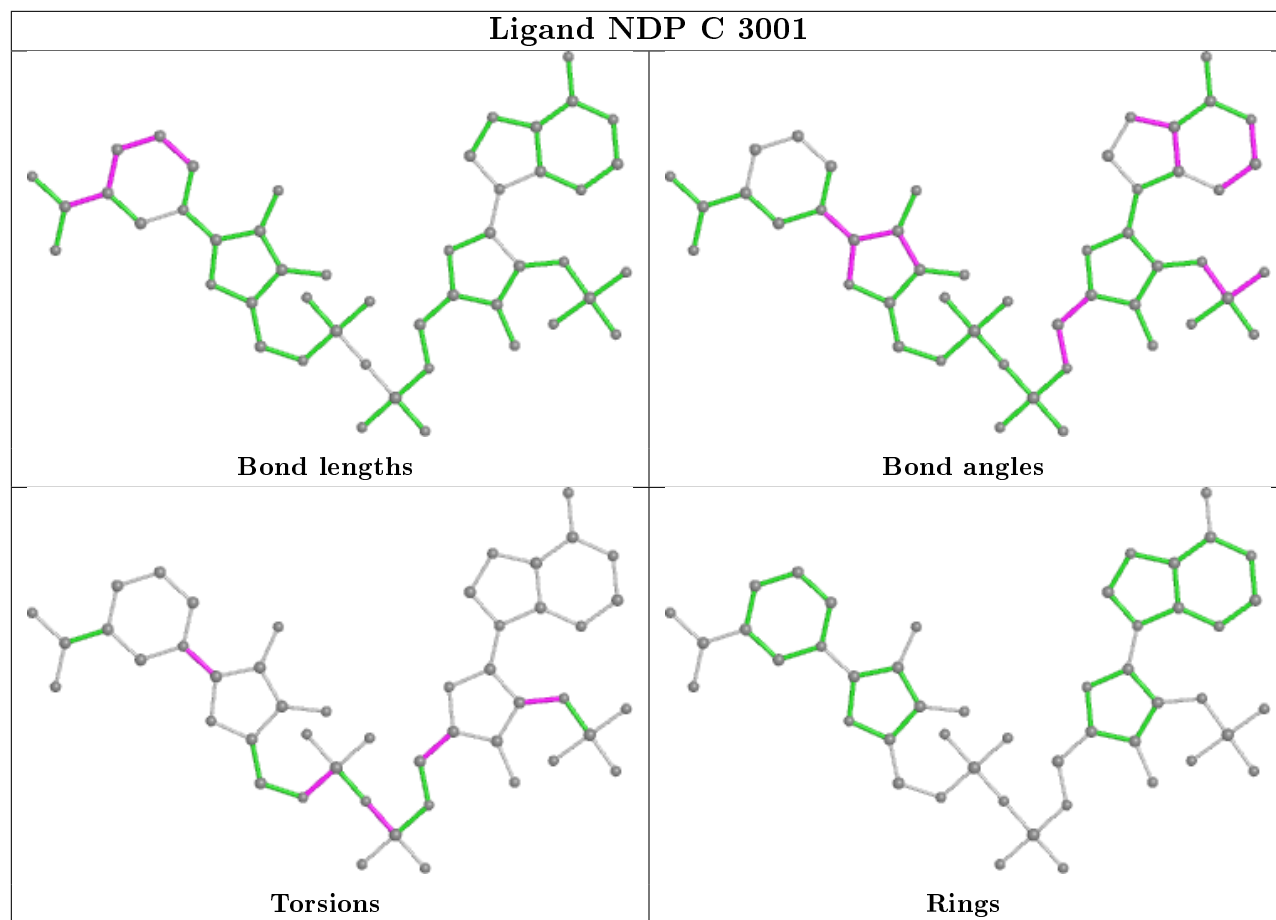
There are no ring outliers.

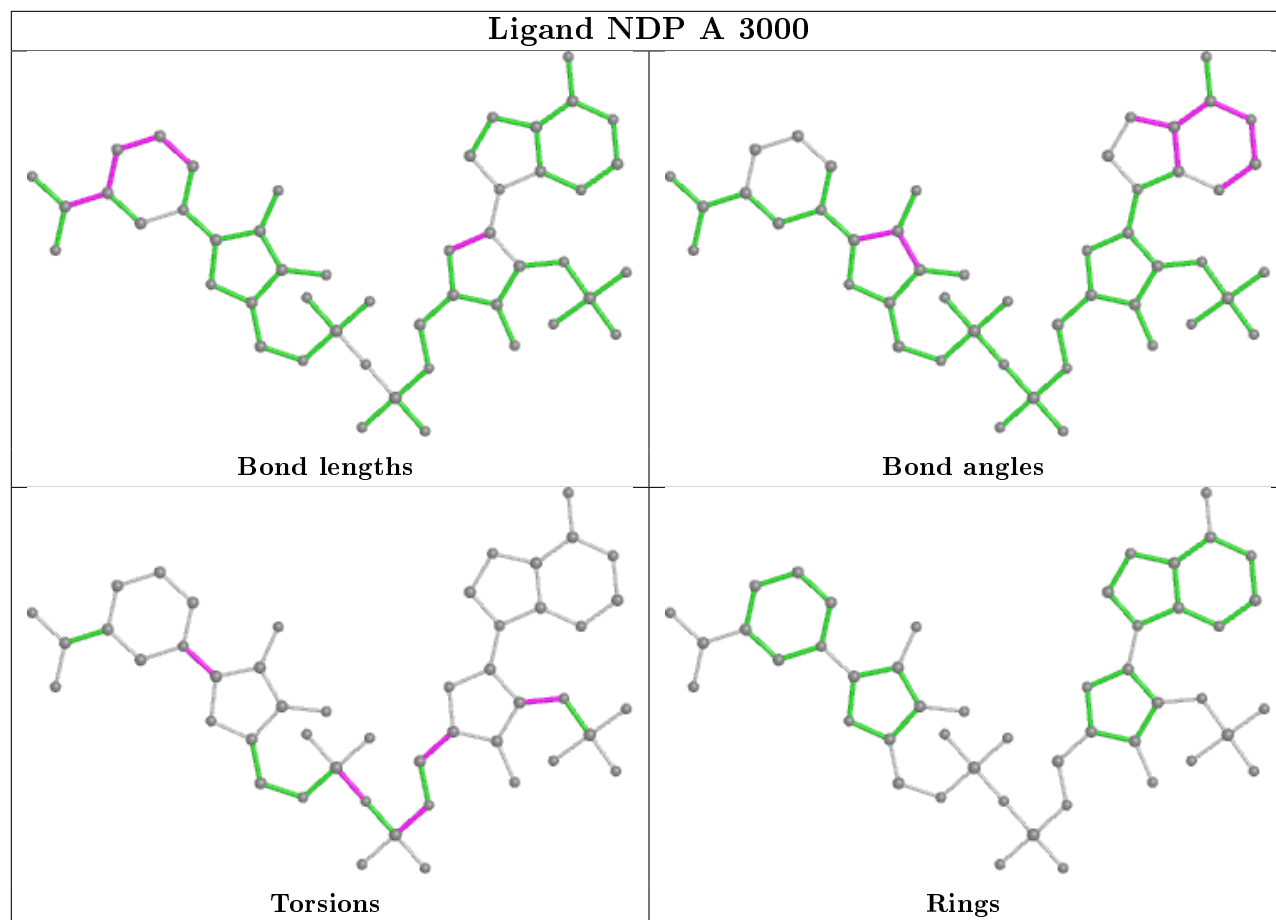
9 monomers are involved in 19 short contacts:

Mol	Chain	Res	Type	Clashes	Symm-Clashes
2	D	4003	CYN	4	0
3	C	2002	HEM	4	0
4	C	3001	NDP	1	0
2	C	4002	CYN	4	0
3	A	2000	HEM	5	0
2	B	4001	CYN	4	0
3	B	2001	HEM	5	0
2	A	4000	CYN	4	0
3	D	2003	HEM	4	0

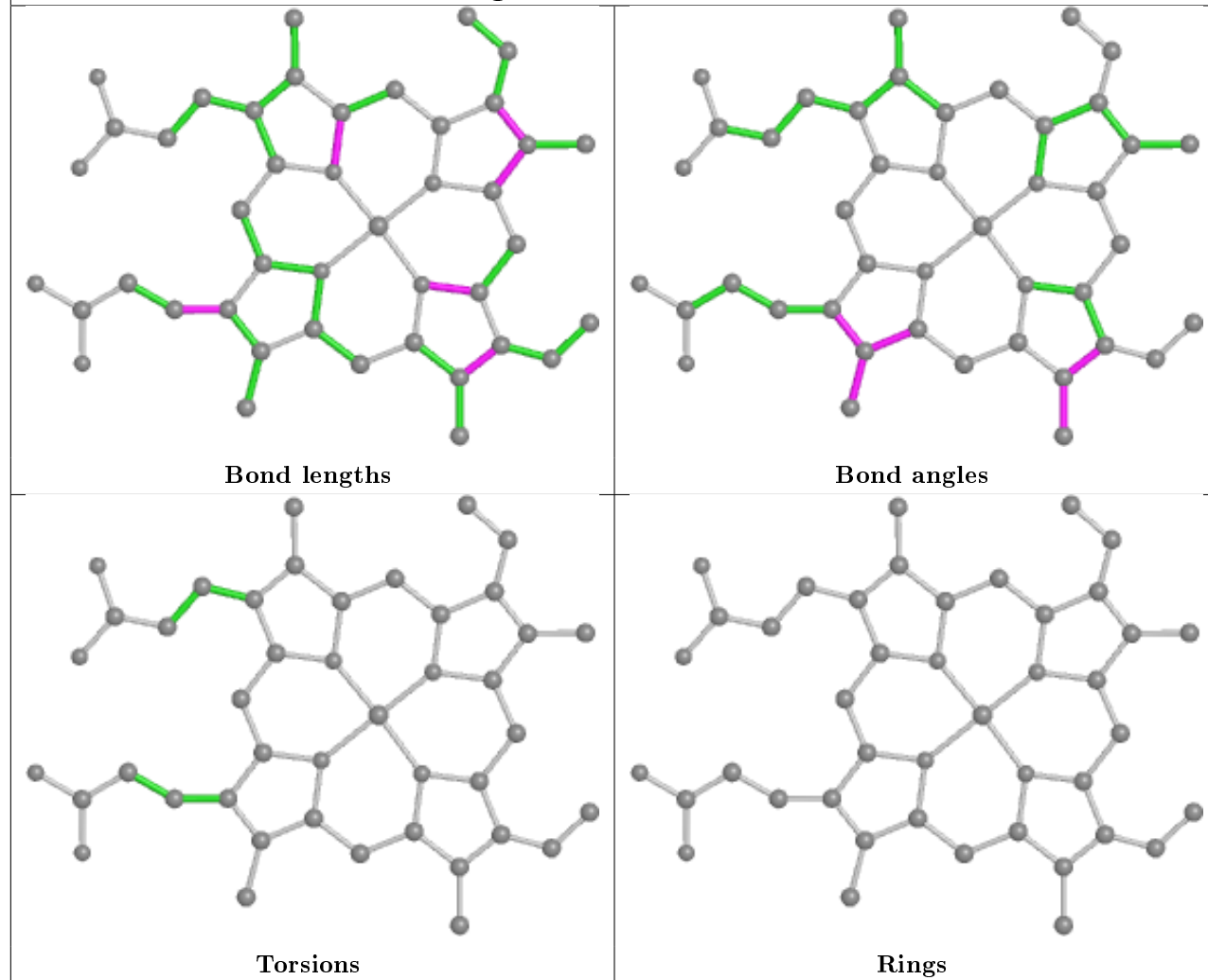
The following is a two-dimensional graphical depiction of Mogul quality analysis of bond lengths, bond angles, torsion angles, and ring geometry for all instances of the Ligand of Interest. In addition, ligands with molecular weight > 250 and outliers as shown on the validation Tables will also be included. For torsion angles, if less than 5% of the Mogul distribution of torsion angles is within 10 degrees of the torsion angle in question, then that torsion angle is considered an outlier. Any bond that is central to one or more torsion angles identified as an outlier by Mogul will be highlighted in the graph. For rings, the root-mean-square deviation (RMSD) between the ring in question and similar rings identified by Mogul is calculated over all ring torsion angles. If the average RMSD is greater than 60 degrees and the minimal RMSD between the ring in question and any Mogul-identified rings is also greater than 60 degrees, then that ring is considered an outlier. The outliers are highlighted in purple. The color gray indicates Mogul did not find sufficient equivalents in the CSD to analyse the geometry.

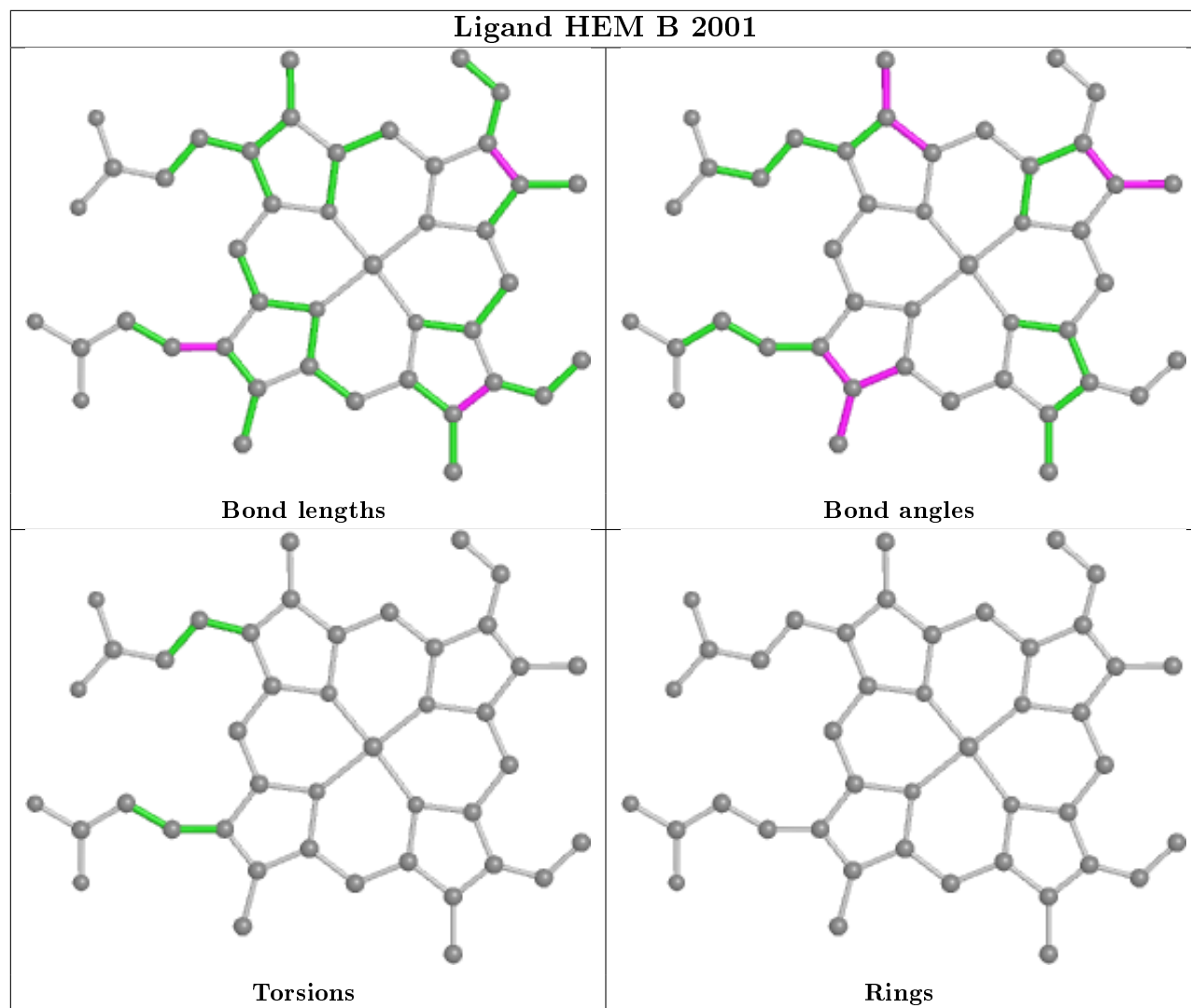


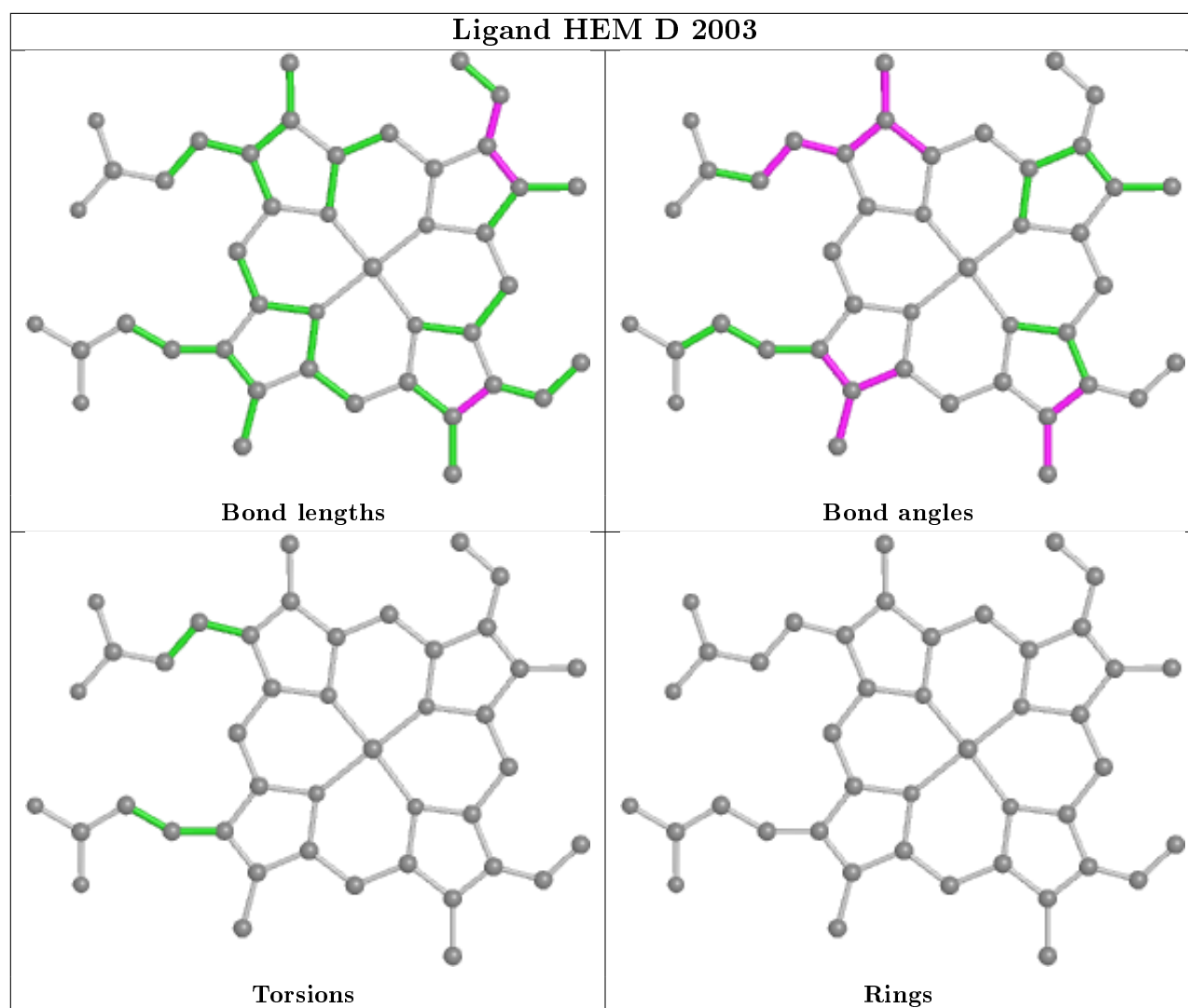




## Ligand HEM A 2000







## 5.7 Other polymers [i](#)

There are no such residues in this entry.

## 5.8 Polymer linkage issues [i](#)

There are no chain breaks in this entry.

## 6 Fit of model and data ⓘ

### 6.1 Protein, DNA and RNA chains ⓘ

In the following table, the column labelled ‘#RSRZ> 2’ contains the number (and percentage) of RSRZ outliers, followed by percent RSRZ outliers for the chain as percentile scores relative to all X-ray entries and entries of similar resolution. The OWAB column contains the minimum, median, 95<sup>th</sup> percentile and maximum values of the occupancy-weighted average B-factor per residue. The column labelled ‘Q< 0.9’ lists the number of (and percentage) of residues with an average occupancy less than 0.9.

Mol	Chain	Analysed	<RSRZ>	#RSRZ>2	OWAB(Å <sup>2</sup> )	Q<0.9
1	A	497/497 (100%)	-0.28	7 (1%) 75 72	37, 42, 50, 57	0
1	B	497/497 (100%)	-0.28	8 (1%) 72 68	37, 43, 51, 60	0
1	C	497/497 (100%)	-0.29	7 (1%) 75 72	38, 41, 51, 56	0
1	D	497/497 (100%)	-0.28	6 (1%) 79 76	37, 42, 49, 58	0
All	All	1988/1988 (100%)	-0.28	28 (1%) 75 72	37, 42, 51, 60	0

All (28) RSRZ outliers are listed below:

Mol	Chain	Res	Type	RSRZ
1	B	21	ALA	8.2
1	D	21	ALA	7.2
1	C	21	ALA	6.6
1	C	20	ALA	6.4
1	A	20	ALA	5.7
1	A	21	ALA	5.4
1	D	20	ALA	5.4
1	B	20	ALA	4.5
1	B	426	SER	2.9
1	B	306	LYS	2.9
1	D	382	ARG	2.8
1	D	306	LYS	2.8
1	A	417	SER	2.7
1	A	419	LEU	2.6
1	C	287	ASN	2.6
1	A	500	TYR	2.5
1	D	395	GLN	2.5
1	B	424	GLN	2.4
1	C	394	MET	2.4
1	C	306	LYS	2.3
1	D	23	LYS	2.3

*Continued on next page...*



*Continued from previous page...*

Mol	Chain	Res	Type	RSRZ
1	B	305	HIS	2.3
1	C	226	ASN	2.2
1	B	382	ARG	2.2
1	B	482	PHE	2.1
1	C	499	LYS	2.1
1	A	493	ILE	2.1
1	A	394	MET	2.1

## 6.2 Non-standard residues in protein, DNA, RNA chains [i](#)

There are no non-standard protein/DNA/RNA residues in this entry.

## 6.3 Carbohydrates [i](#)

There are no carbohydrates in this entry.

## 6.4 Ligands [i](#)

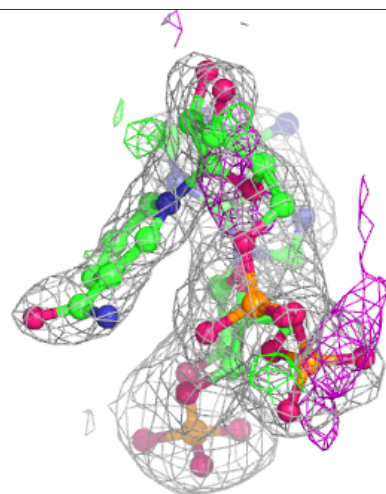
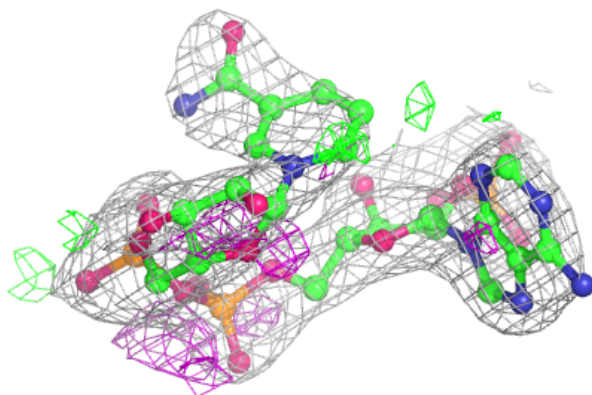
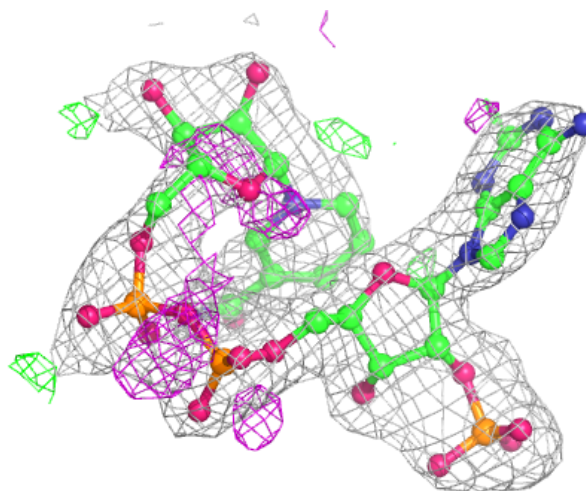
In the following table, the Atoms column lists the number of modelled atoms in the group and the number defined in the chemical component dictionary. The B-factors column lists the minimum, median, 95<sup>th</sup> percentile and maximum values of B factors of atoms in the group. The column labelled 'Q< 0.9' lists the number of atoms with occupancy less than 0.9.

Mol	Type	Chain	Res	Atoms	RSCC	RSR	B-factors( $\text{\AA}^2$ )	Q<0.9
4	NDP	C	3001	48/48	0.92	0.16	80,81,82,82	0
4	NDP	A	3000	48/48	0.92	0.12	62,65,66,66	0
2	CYN	D	4003	2/2	0.98	0.15	39,39,39,39	0
3	HEM	A	2000	43/43	0.98	0.07	39,39,40,40	0
2	CYN	B	4001	2/2	0.98	0.16	39,39,39,40	0
3	HEM	D	2003	43/43	0.98	0.09	38,39,39,39	0
3	HEM	C	2002	43/43	0.99	0.07	38,39,39,39	0
3	HEM	B	2001	43/43	0.99	0.08	38,39,39,39	0
2	CYN	A	4000	2/2	0.99	0.16	39,39,39,40	0
2	CYN	C	4002	2/2	0.99	0.08	39,39,39,40	0

The following is a graphical depiction of the model fit to experimental electron density of all instances of the Ligand of Interest. In addition, ligands with molecular weight > 250 and outliers as shown on the geometry validation Tables will also be included. Each fit is shown from different orientation to approximate a three-dimensional view.

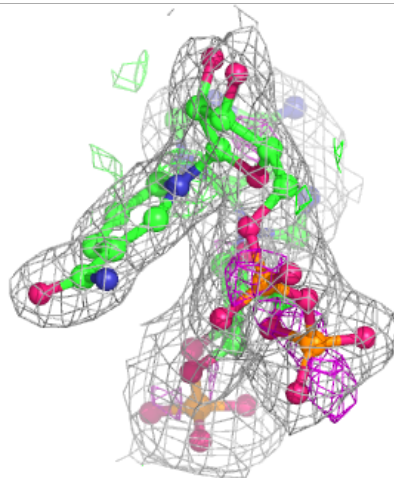
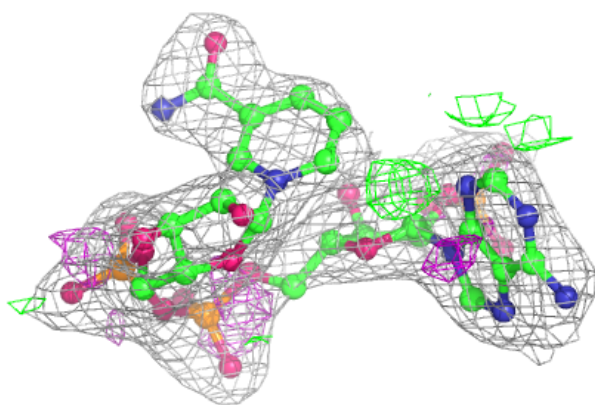
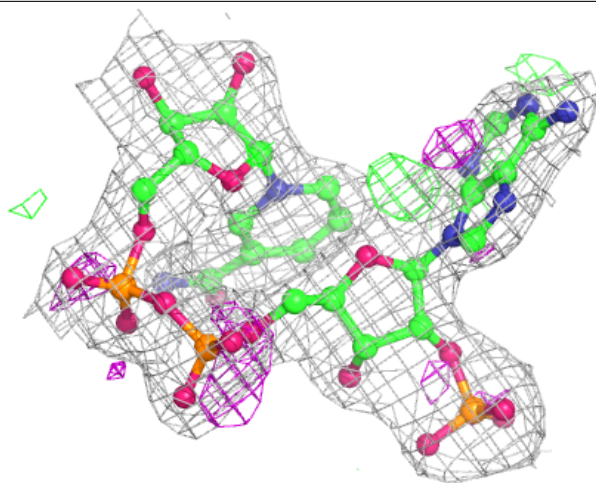
**Electron density around NDP C 3001:**

$2mF_o-DF_c$  (at 0.7 rmsd) in gray  
 $mF_o-DF_c$  (at 3 rmsd) in purple (negative)  
and green (positive)



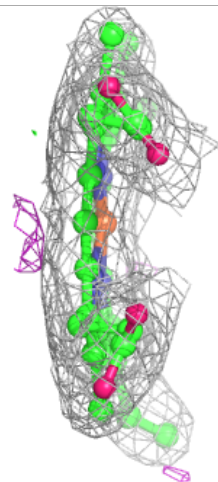
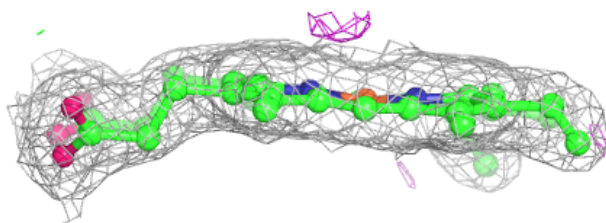
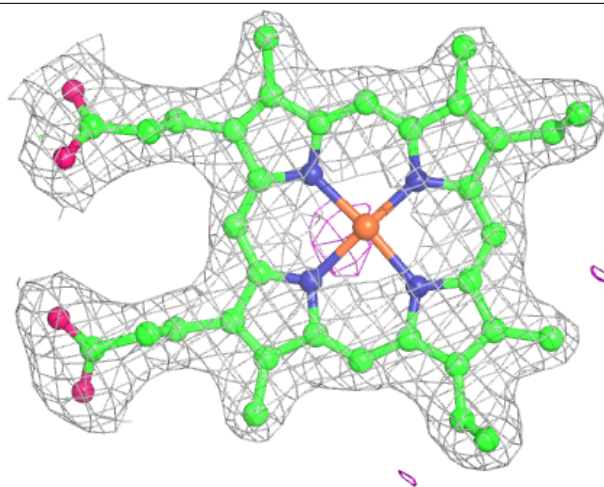
**Electron density around NDP A 3000:**

$2mF_o-DF_c$  (at 0.7 rmsd) in gray  
 $mF_o-DF_c$  (at 3 rmsd) in purple (negative)  
and green (positive)



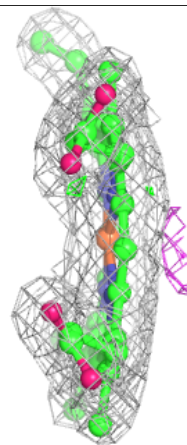
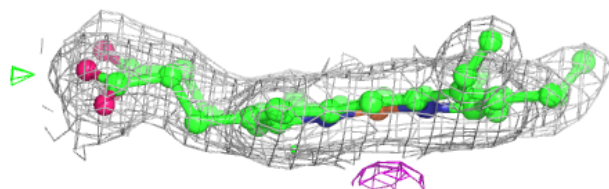
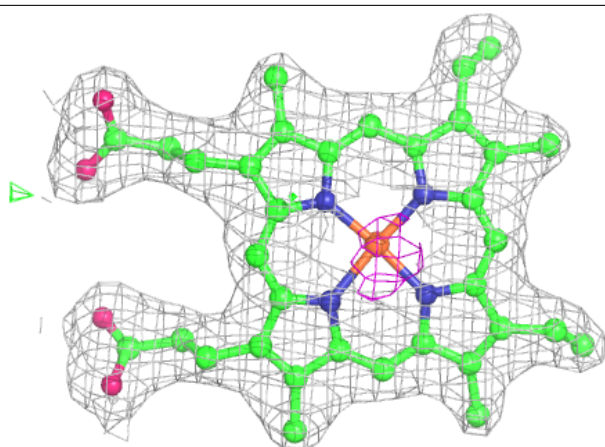
**Electron density around HEM A 2000:**

$2mF_o-DF_c$  (at 0.7 rmsd) in gray  
 $mF_o-DF_c$  (at 3 rmsd) in purple (negative)  
and green (positive)



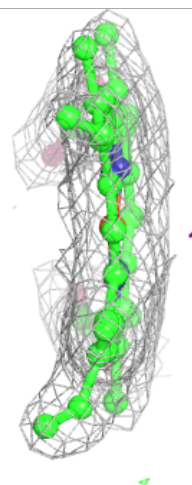
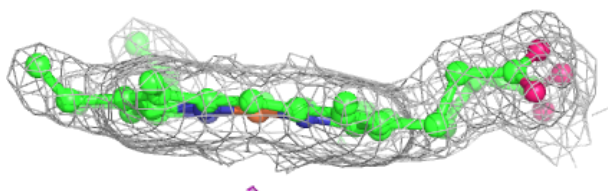
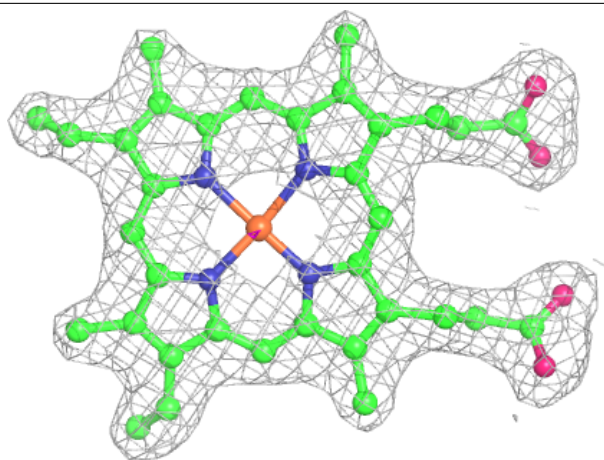
**Electron density around HEM D 2003:**

$2mF_o-DF_c$  (at 0.7 rmsd) in gray  
 $mF_o-DF_c$  (at 3 rmsd) in purple (negative)  
and green (positive)



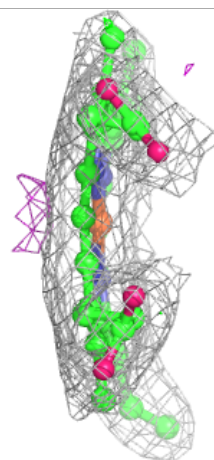
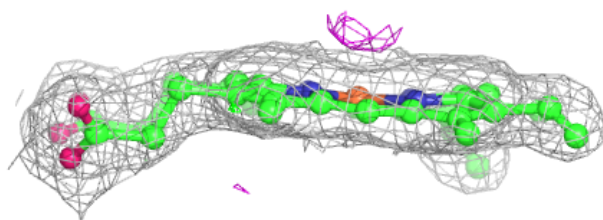
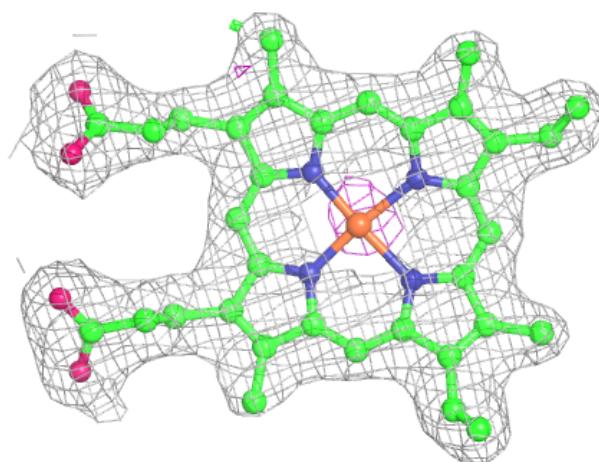
**Electron density around HEM C 2002:**

$2mF_o-DF_c$  (at 0.7 rmsd) in gray  
 $mF_o-DF_c$  (at 3 rmsd) in purple (negative)  
and green (positive)



**Electron density around HEM B 2001:**

$2mF_o-DF_c$  (at 0.7 rmsd) in gray  
 $mF_o-DF_c$  (at 3 rmsd) in purple (negative)  
and green (positive)



## 6.5 Other polymers [i](#)

There are no such residues in this entry.