



Full wwPDB X-ray Structure Validation Report ⓘ

May 16, 2020 – 02:46 am BST

PDB ID : 5DG5
Title : CRYSTAL STRUCTURE OF THE TYROSINE KINASE DOMAIN OF THE
HEPATOCYTE GROWTH FACTOR RECEPTOR C-MET IN COMPLEX
WITH ALTIRATINIB ANALOG DP-4157
Authors : Smith, B.D.; Kaufman, M.D.; Leary, C.B.; Turner, B.A.; Wise, S.A.; Ahn,
Y.M.; Booth, R.J.; Caldwell, T.M.; Ensinger, C.L.; Hood, M.M.; Lu, W.-
P.; Patt, T.W.; Patt, W.C.; Rutkoski, T.J.; Samarakoon, T.; Telikepalli, H.;
Vogeti, L.; Vogeti, S.; Yates, K.M.; Chun, L.; Stewart, L.J.; Clare, M.; Flynn,
D.L.
Deposited on : 2015-08-27
Resolution : 2.60 Å(reported)

This is a Full wwPDB X-ray Structure Validation Report for a publicly released PDB entry.

We welcome your comments at validation@mail.wwpdb.org

A user guide is available at

<https://www.wwpdb.org/validation/2017/XrayValidationReportHelp>

with specific help available everywhere you see the ⓘ symbol.

The following versions of software and data (see [references](#) ①) were used in the production of this report:

MolProbity	:	4.02b-467
Mogul	:	1.8.5 (274361), CSD as541be (2020)
Xtriage (Phenix)	:	1.13
EDS	:	2.11
buster-report	:	1.1.7 (2018)
Percentile statistics	:	20191225.v01 (using entries in the PDB archive December 25th 2019)
Refmac	:	5.8.0158
CCP4	:	7.0.044 (Gargrove)
Ideal geometry (proteins)	:	Engh & Huber (2001)
Ideal geometry (DNA, RNA)	:	Parkinson et al. (1996)
Validation Pipeline (wwPDB-VP)	:	2.11

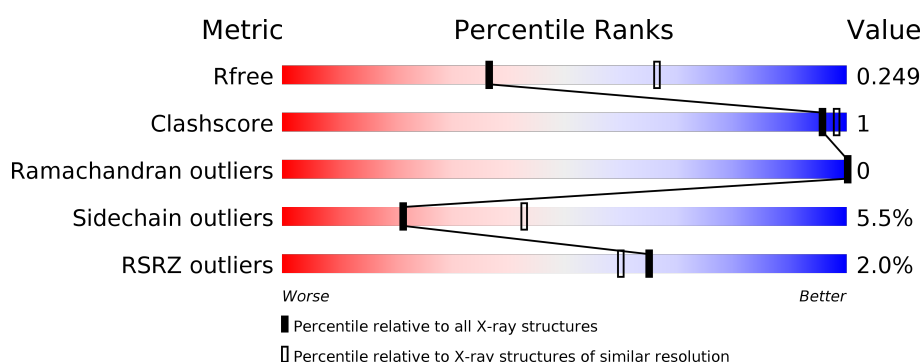
1 Overall quality at a glance

The following experimental techniques were used to determine the structure:

X-RAY DIFFRACTION

The reported resolution of this entry is 2.60 Å.

Percentile scores (ranging between 0-100) for global validation metrics of the entry are shown in the following graphic. The table shows the number of entries on which the scores are based.



Metric	Whole archive (#Entries)	Similar resolution (#Entries, resolution range(Å))
R_{free}	130704	3163 (2.60-2.60)
Clashscore	141614	3518 (2.60-2.60)
Ramachandran outliers	138981	3455 (2.60-2.60)
Sidechain outliers	138945	3455 (2.60-2.60)
RSRZ outliers	127900	3104 (2.60-2.60)

The table below summarises the geometric issues observed across the polymeric chains and their fit to the electron density. The red, orange, yellow and green segments on the lower bar indicate the fraction of residues that contain outliers for ≥ 3 , 2, 1 and 0 types of geometric quality criteria respectively. A grey segment represents the fraction of residues that are not modelled. The numeric value for each fraction is indicated below the corresponding segment, with a dot representing fractions $\leq 5\%$. The upper red bar (where present) indicates the fraction of residues that have poor fit to the electron density. The numeric value is given above the bar.

Mol	Chain	Length	Quality of chain
1	A	318	<div> <div>2%</div> <div> <div></div> <div>89%</div> <div>• • 7%</div> </div> </div>
1	B	318	<div> <div>2%</div> <div> <div></div> <div>87%</div> <div>6% 7%</div> </div> </div>

2 Entry composition

There are 3 unique types of molecules in this entry. The entry contains 4717 atoms, of which 0 are hydrogens and 0 are deuteriums.

In the tables below, the ZeroOcc column contains the number of atoms modelled with zero occupancy, the AltConf column contains the number of residues with at least one atom in alternate conformation and the Trace column contains the number of residues modelled with at most 2 atoms.

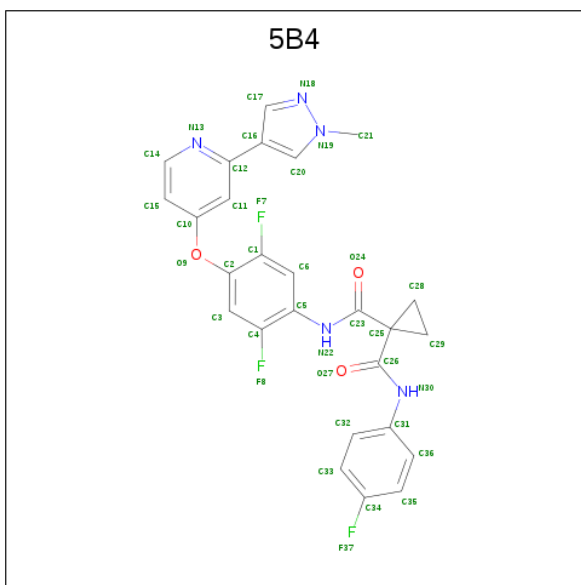
- Molecule 1 is a protein called Hepatocyte growth factor receptor.

Mol	Chain	Residues	Atoms					ZeroOcc	AltConf	Trace
1	A	297	Total	C	N	O	S	0	1	0
			2300	1489	389	407	15			
1	B	297	Total	C	N	O	S	0	0	0
			2310	1493	391	411	15			

There are 18 discrepancies between the modelled and reference sequences:

Chain	Residue	Modelled	Actual	Comment	Reference
A	1029	MET	-	initiating methionine	UNP P08581
A	1030	GLY	-	expression tag	UNP P08581
A	1031	HIS	-	expression tag	UNP P08581
A	1032	HIS	-	expression tag	UNP P08581
A	1033	HIS	-	expression tag	UNP P08581
A	1034	HIS	-	expression tag	UNP P08581
A	1035	HIS	-	expression tag	UNP P08581
A	1036	HIS	-	expression tag	UNP P08581
A	1037	MET	-	expression tag	UNP P08581
B	1029	MET	-	initiating methionine	UNP P08581
B	1030	GLY	-	expression tag	UNP P08581
B	1031	HIS	-	expression tag	UNP P08581
B	1032	HIS	-	expression tag	UNP P08581
B	1033	HIS	-	expression tag	UNP P08581
B	1034	HIS	-	expression tag	UNP P08581
B	1035	HIS	-	expression tag	UNP P08581
B	1036	HIS	-	expression tag	UNP P08581
B	1037	MET	-	expression tag	UNP P08581

- Molecule 2 is N-(2,5-difluoro-4-{[2-(1-methyl-1H-pyrazol-4-yl)pyridin-4-yl]oxy}phenyl)-N'-(4-fluorophenyl)cyclopropane-1,1-dicarboxamide (three-letter code: 5B4) (formula: C₂₆H₂₀F₃N₅O₃).

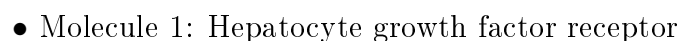


Mol	Chain	Residues	Atoms					ZeroOcc	AltConf
2	A	1	Total 37	C 26	F 3	N 5	O 3	0	0
2	B	1	Total 37	C 26	F 3	N 5	O 3	0	0

- Molecule 3 is water.

Mol	Chain	Residues	Atoms	ZeroOcc	AltConf
3	A	23	Total O 23 23	0	0
3	B	10	Total O 10 10	0	0

- Molecule 1: Hepatocyte growth factor receptor



4 Data and refinement statistics

Property	Value	Source
Space group	P 1 21 1	Depositor
Cell constants a, b, c, α , β , γ	37.13Å 115.88Å 90.16Å 90.00° 92.92° 90.00°	Depositor
Resolution (Å)	19.65 – 2.60 19.65 – 2.60	Depositor EDS
% Data completeness (in resolution range)	98.2 (19.65-2.60) 98.5 (19.65-2.60)	Depositor EDS
R_{merge}	0.10	Depositor
R_{sym}	(Not available)	Depositor
$\langle I/\sigma(I) \rangle$ ¹	1.88 (at 2.59Å)	Xtriage
Refinement program	REFMAC 5.8.0073	Depositor
R, R_{free}	0.204 , 0.245 0.208 , 0.249	Depositor DCC
R_{free} test set	1161 reflections (5.03%)	wwPDB-VP
Wilson B-factor (Å ²)	43.7	Xtriage
Anisotropy	0.177	Xtriage
Bulk solvent k_{sol} (e/Å ³), B_{sol} (Å ²)	0.32 , 30.2	EDS
L-test for twinning ²	$\langle L \rangle = 0.49$, $\langle L^2 \rangle = 0.32$	Xtriage
Estimated twinning fraction	0.108 for h,-k,-l	Xtriage
F_o, F_c correlation	0.94	EDS
Total number of atoms	4717	wwPDB-VP
Average B, all atoms (Å ²)	44.0	wwPDB-VP

Xtriage's analysis on translational NCS is as follows: *The largest off-origin peak in the Patterson function is 5.36% of the height of the origin peak. No significant pseudotranslation is detected.*

¹Intensities estimated from amplitudes.

²Theoretical values of $\langle |L| \rangle$, $\langle L^2 \rangle$ for acentric reflections are 0.5, 0.333 respectively for untwinned datasets, and 0.375, 0.2 for perfectly twinned datasets.

5 Model quality

5.1 Standard geometry

Bond lengths and bond angles in the following residue types are not validated in this section: 5B4

The Z score for a bond length (or angle) is the number of standard deviations the observed value is removed from the expected value. A bond length (or angle) with $|Z| > 5$ is considered an outlier worth inspection. RMSZ is the root-mean-square of all Z scores of the bond lengths (or angles).

Mol	Chain	Bond lengths		Bond angles	
		RMSZ	$\# Z > 5$	RMSZ	$\# Z > 5$
1	A	0.40	0/2363	0.60	0/3215
1	B	0.42	0/2369	0.62	0/3220
All	All	0.41	0/4732	0.61	0/6435

There are no bond length outliers.

There are no bond angle outliers.

There are no chirality outliers.

There are no planarity outliers.

5.2 Too-close contacts

In the following table, the Non-H and H(model) columns list the number of non-hydrogen atoms and hydrogen atoms in the chain respectively. The H(added) column lists the number of hydrogen atoms added and optimized by MolProbity. The Clashes column lists the number of clashes within the asymmetric unit, whereas Symm-Clashes lists symmetry related clashes.

Mol	Chain	Non-H	H(model)	H(added)	Clashes	Symm-Clashes
1	A	2300	0	2258	5	0
1	B	2310	0	2279	2	0
2	A	37	0	0	2	0
2	B	37	0	0	1	0
3	A	23	0	0	0	0
3	B	10	0	0	0	0
All	All	4717	0	4537	10	0

The all-atom clashscore is defined as the number of clashes found per 1000 atoms (including hydrogen atoms). The all-atom clashscore for this structure is 1.

All (10) close contacts within the same asymmetric unit are listed below, sorted by their clash

magnitude.

Atom-1	Atom-2	Interatomic distance (Å)	Clash overlap (Å)
1:B:1176:PRO:O	1:B:1279:ARG:NH2	2.15	0.80
1:A:1176:PRO:O	1:A:1279:ARG:NH1	2.24	0.60
2:A:1401:5B4:O27	2:A:1401:5B4:C32	2.58	0.52
2:B:1401:5B4:O27	2:B:1401:5B4:C32	2.57	0.50
1:A:1287:VAL:HG12	1:A:1292:ILE:HD12	1.98	0.44
2:A:1401:5B4:O24	2:A:1401:5B4:C6	2.64	0.44
1:A:1081:ASN:OD1	1:A:1082:GLU:HG3	2.18	0.44
1:B:1287:VAL:HG12	1:B:1292:ILE:HD12	2.01	0.42
1:A:1287:VAL:CG1	1:A:1292:ILE:HD12	2.50	0.41
1:A:1081:ASN:H	1:A:1081:ASN:ND2	2.20	0.40

There are no symmetry-related clashes.

5.3 Torsion angles

5.3.1 Protein backbone

In the following table, the Percentiles column shows the percent Ramachandran outliers of the chain as a percentile score with respect to all X-ray entries followed by that with respect to entries of similar resolution.

The Analysed column shows the number of residues for which the backbone conformation was analysed, and the total number of residues.

Mol	Chain	Analysed	Favoured	Allowed	Outliers	Percentiles	
1	A	296/318 (93%)	289 (98%)	7 (2%)	0	100	100
1	B	295/318 (93%)	286 (97%)	9 (3%)	0	100	100
All	All	591/636 (93%)	575 (97%)	16 (3%)	0	100	100

There are no Ramachandran outliers to report.

5.3.2 Protein sidechains

In the following table, the Percentiles column shows the percent sidechain outliers of the chain as a percentile score with respect to all X-ray entries followed by that with respect to entries of similar resolution.

The Analysed column shows the number of residues for which the sidechain conformation was analysed, and the total number of residues.

Mol	Chain	Analysed	Rotameric	Outliers	Percentiles	
1	A	246/282 (87%)	235 (96%)	11 (4%)	27	52
1	B	249/282 (88%)	233 (94%)	16 (6%)	17	35
All	All	495/564 (88%)	468 (94%)	27 (6%)	21	43

All (27) residues with a non-rotameric sidechain are listed below:

Mol	Chain	Res	Type
1	A	1070	VAL
1	A	1075	SER
1	A	1081	ASN
1	A	1111	SER
1	A	1122	SER
1	A	1131	MET
1	A	1208	ARG
1	A	1229	MET
1	A	1231	ASP
1	A	1290	PHE
1	A	1292	ILE
1	B	1059	ASN
1	B	1070	VAL
1	B	1075	SER
1	B	1098	LEU
1	B	1111	SER
1	B	1122	SER
1	B	1131	MET
1	B	1132	LYS
1	B	1148	ARG
1	B	1208	ARG
1	B	1225	LEU
1	B	1229	MET
1	B	1231	ASP
1	B	1245	LEU
1	B	1288	ASN
1	B	1292	ILE

Some sidechains can be flipped to improve hydrogen bonding and reduce clashes. All (6) such sidechains are listed below:

Mol	Chain	Res	Type
1	A	1088	HIS
1	A	1239	ASN
1	A	1288	ASN

Continued on next page...

Continued from previous page...

Mol	Chain	Res	Type
1	B	1059	ASN
1	B	1238	HIS
1	B	1239	ASN

5.3.3 RNA ⓘ

There are no RNA molecules in this entry.

5.4 Non-standard residues in protein, DNA, RNA chains ⓘ

There are no non-standard protein/DNA/RNA residues in this entry.

5.5 Carbohydrates ⓘ

There are no carbohydrates in this entry.

5.6 Ligand geometry ⓘ

2 ligands are modelled in this entry.

In the following table, the Counts columns list the number of bonds (or angles) for which Mogul statistics could be retrieved, the number of bonds (or angles) that are observed in the model and the number of bonds (or angles) that are defined in the Chemical Component Dictionary. The Link column lists molecule types, if any, to which the group is linked. The Z score for a bond length (or angle) is the number of standard deviations the observed value is removed from the expected value. A bond length (or angle) with $|Z| > 2$ is considered an outlier worth inspection. RMSZ is the root-mean-square of all Z scores of the bond lengths (or angles).

Mol	Type	Chain	Res	Link	Bond lengths			Bond angles		
					Counts	RMSZ	$\# Z > 2$	Counts	RMSZ	$\# Z > 2$
2	5B4	A	1401	-	38,41,41	1.32	3 (7%)	54,60,60	1.55	9 (16%)
2	5B4	B	1401	-	38,41,41	1.35	5 (13%)	54,60,60	1.52	9 (16%)

In the following table, the Chirals column lists the number of chiral outliers, the number of chiral centers analysed, the number of these observed in the model and the number defined in the Chemical Component Dictionary. Similar counts are reported in the Torsion and Rings columns. '-' means no outliers of that kind were identified.

Mol	Type	Chain	Res	Link	Chirals	Torsions	Rings
2	5B4	A	1401	-	-	5/26/32/32	0/5/5/5

Continued on next page...

Continued from previous page...

Mol	Type	Chain	Res	Link	Chirals	Torsions	Rings
2	5B4	B	1401	-	-	5/26/32/32	0/5/5/5

All (8) bond length outliers are listed below:

Mol	Chain	Res	Type	Atoms	Z	Observed(Å)	Ideal(Å)
2	B	1401	5B4	C5-C4	5.87	1.46	1.38
2	A	1401	5B4	C5-C4	5.43	1.45	1.38
2	B	1401	5B4	C20-N19	-3.12	1.32	1.35
2	A	1401	5B4	C20-N19	-2.80	1.32	1.35
2	A	1401	5B4	C5-N22	-2.72	1.36	1.41
2	B	1401	5B4	C31-N30	-2.64	1.36	1.41
2	B	1401	5B4	C5-N22	-2.30	1.37	1.41
2	B	1401	5B4	C6-C1	2.03	1.41	1.37

All (18) bond angle outliers are listed below:

Mol	Chain	Res	Type	Atoms	Z	Observed(°)	Ideal(°)
2	B	1401	5B4	C21-N19-N18	-4.74	114.94	120.50
2	A	1401	5B4	C21-N19-N18	-4.51	115.21	120.50
2	A	1401	5B4	C3-C4-C5	-3.69	119.99	123.50
2	B	1401	5B4	C3-C4-C5	-3.34	120.32	123.50
2	B	1401	5B4	C28-C25-C29	3.11	60.20	57.41
2	A	1401	5B4	C28-C25-C29	2.95	60.06	57.41
2	B	1401	5B4	C14-N13-C12	2.76	121.11	117.23
2	B	1401	5B4	C31-N30-C26	-2.74	121.81	126.78
2	B	1401	5B4	C15-C14-N13	-2.73	120.57	123.96
2	A	1401	5B4	C15-C14-N13	-2.68	120.62	123.96
2	A	1401	5B4	C31-N30-C26	-2.65	121.97	126.78
2	A	1401	5B4	C14-N13-C12	2.60	120.88	117.23
2	A	1401	5B4	C10-C11-C12	2.42	119.89	118.35
2	A	1401	5B4	C35-C34-C33	-2.18	119.93	122.83
2	A	1401	5B4	C25-C26-N30	2.10	118.75	115.42
2	B	1401	5B4	C29-C28-C25	-2.09	59.76	61.30
2	B	1401	5B4	C3-C2-C1	2.02	120.46	118.56
2	B	1401	5B4	C35-C34-C33	-2.02	120.15	122.83

There are no chirality outliers.

All (10) torsion outliers are listed below:

Mol	Chain	Res	Type	Atoms
2	B	1401	5B4	C29-C25-C26-N30

Continued on next page...

Continued from previous page...

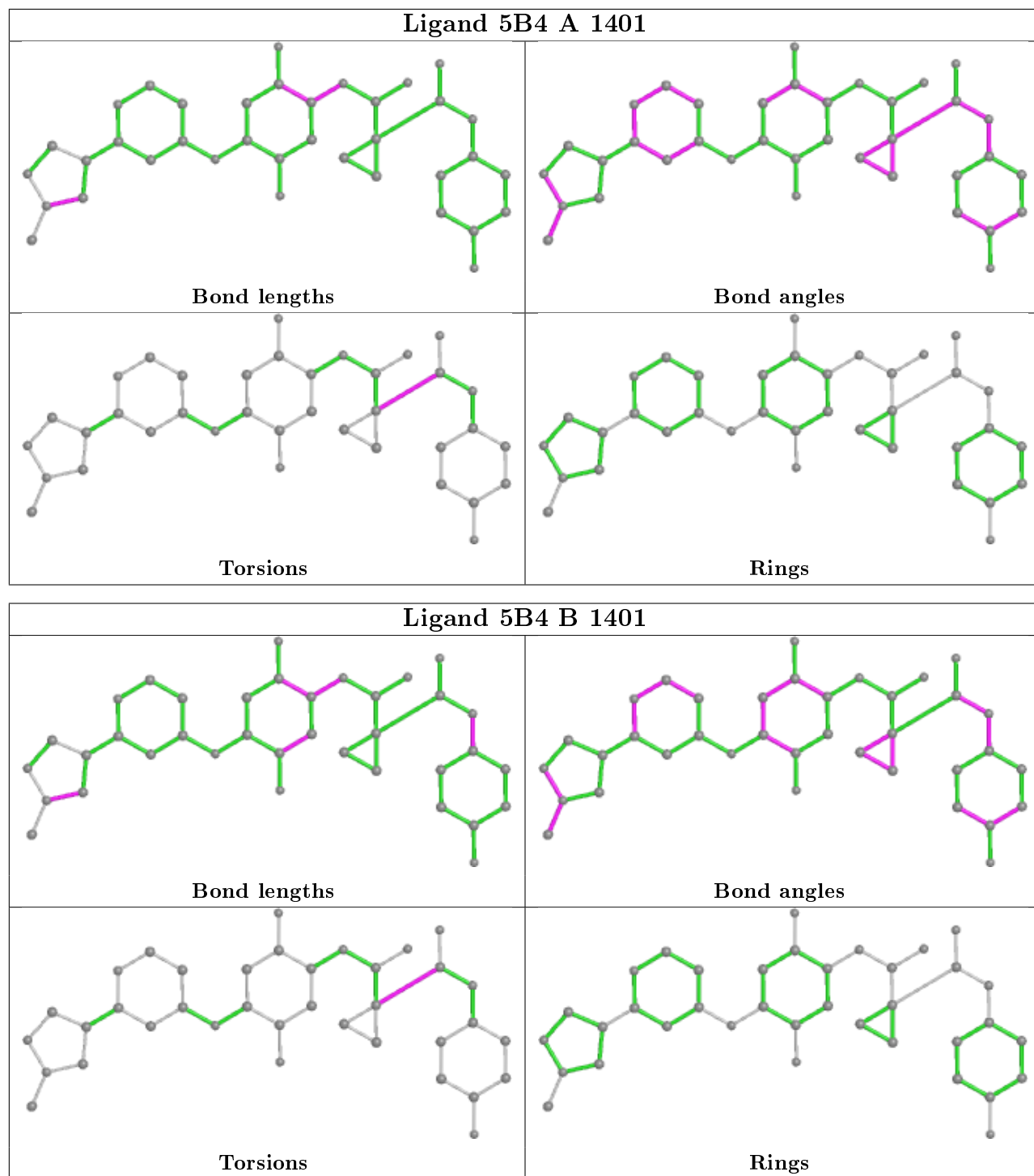
Mol	Chain	Res	Type	Atoms
2	A	1401	5B4	C28-C25-C26-N30
2	A	1401	5B4	C28-C25-C26-O27
2	B	1401	5B4	C29-C25-C26-O27
2	B	1401	5B4	C28-C25-C26-O27
2	A	1401	5B4	C23-C25-C26-N30
2	B	1401	5B4	C23-C25-C26-N30
2	A	1401	5B4	C29-C25-C26-N30
2	A	1401	5B4	C29-C25-C26-O27
2	B	1401	5B4	C28-C25-C26-N30

There are no ring outliers.

2 monomers are involved in 3 short contacts:

Mol	Chain	Res	Type	Clashes	Symm-Clashes
2	A	1401	5B4	2	0
2	B	1401	5B4	1	0

The following is a two-dimensional graphical depiction of Mogul quality analysis of bond lengths, bond angles, torsion angles, and ring geometry for all instances of the Ligand of Interest. In addition, ligands with molecular weight > 250 and outliers as shown on the validation Tables will also be included. For torsion angles, if less than 5% of the Mogul distribution of torsion angles is within 10 degrees of the torsion angle in question, then that torsion angle is considered an outlier. Any bond that is central to one or more torsion angles identified as an outlier by Mogul will be highlighted in the graph. For rings, the root-mean-square deviation (RMSD) between the ring in question and similar rings identified by Mogul is calculated over all ring torsion angles. If the average RMSD is greater than 60 degrees and the minimal RMSD between the ring in question and any Mogul-identified rings is also greater than 60 degrees, then that ring is considered an outlier. The outliers are highlighted in purple. The color gray indicates Mogul did not find sufficient equivalents in the CSD to analyse the geometry.



5.7 Other polymers [i](#)

There are no such residues in this entry.

5.8 Polymer linkage issues ⓘ

There are no chain breaks in this entry.

6 Fit of model and data [i](#)

6.1 Protein, DNA and RNA chains [i](#)

In the following table, the column labelled ‘#RSRZ> 2’ contains the number (and percentage) of RSRZ outliers, followed by percent RSRZ outliers for the chain as percentile scores relative to all X-ray entries and entries of similar resolution. The OWAB column contains the minimum, median, 95th percentile and maximum values of the occupancy-weighted average B-factor per residue. The column labelled ‘Q< 0.9’ lists the number of (and percentage) of residues with an average occupancy less than 0.9.

Mol	Chain	Analysed	<RSRZ>	#RSRZ>2	OWAB(Å ²)	Q<0.9
1	A	297/318 (93%)	-0.21	5 (1%) 70 66	27, 42, 70, 90	0
1	B	297/318 (93%)	-0.20	7 (2%) 59 53	24, 43, 70, 99	0
All	All	594/636 (93%)	-0.21	12 (2%) 65 60	24, 43, 70, 99	0

All (12) RSRZ outliers are listed below:

Mol	Chain	Res	Type	RSRZ
1	A	1286	ASP	4.3
1	B	1242	GLY	4.1
1	B	1100	ASN	3.8
1	A	1242	GLY	3.2
1	B	1073	PRO	3.1
1	B	1286	ASP	2.5
1	B	1101	ASP	2.4
1	A	1073	PRO	2.4
1	A	1173	THR	2.3
1	B	1243	ALA	2.3
1	A	1241	THR	2.3
1	B	1241	THR	2.0

6.2 Non-standard residues in protein, DNA, RNA chains [i](#)

There are no non-standard protein/DNA/RNA residues in this entry.

6.3 Carbohydrates [i](#)

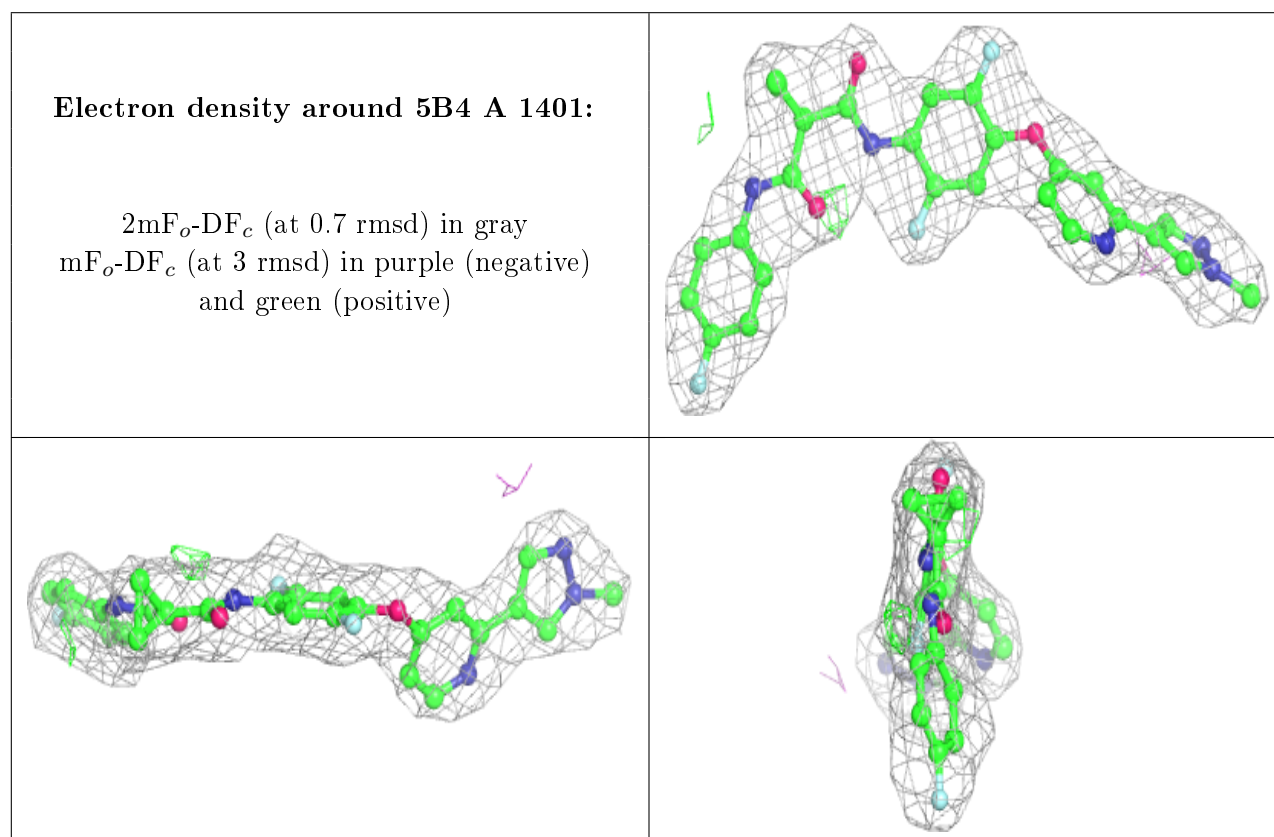
There are no carbohydrates in this entry.

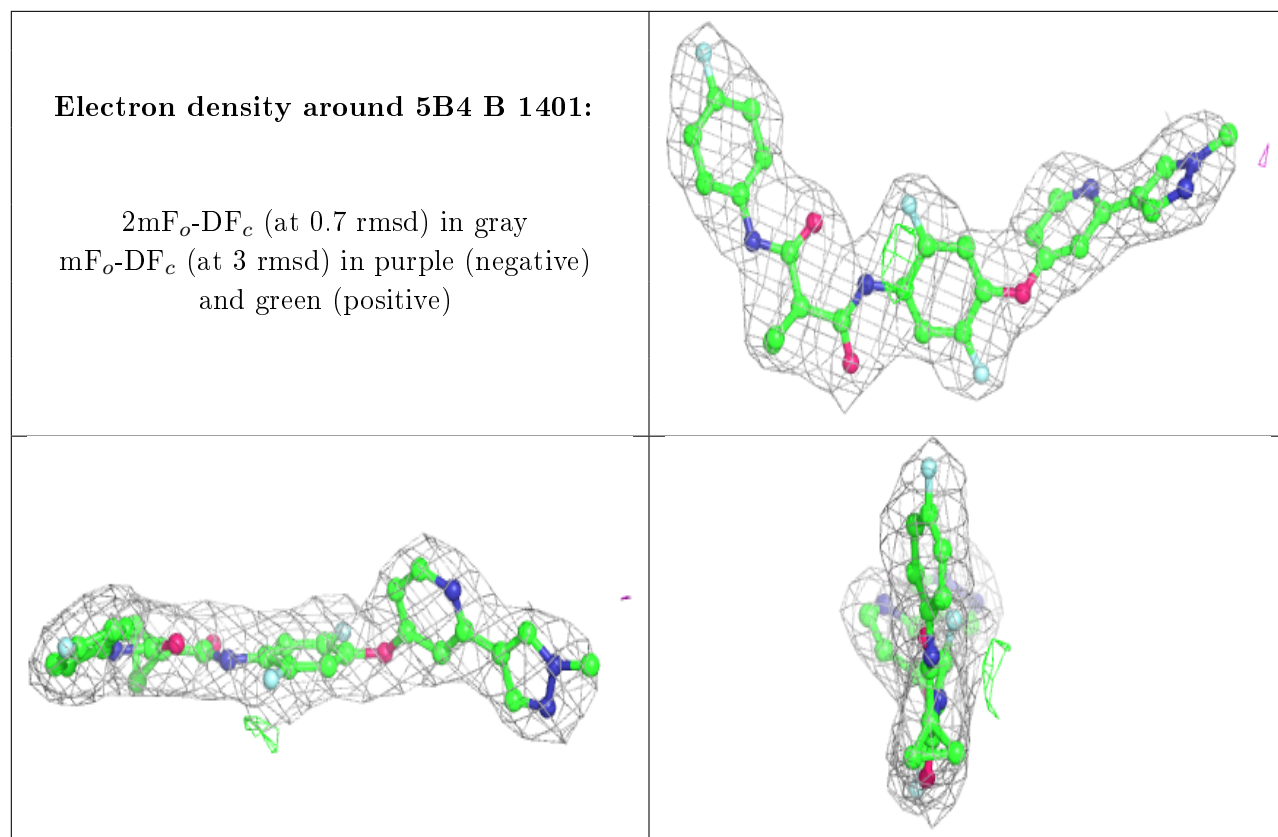
6.4 Ligands ⓘ

In the following table, the Atoms column lists the number of modelled atoms in the group and the number defined in the chemical component dictionary. The B-factors column lists the minimum, median, 95th percentile and maximum values of B factors of atoms in the group. The column labelled 'Q<0.9' lists the number of atoms with occupancy less than 0.9.

Mol	Type	Chain	Res	Atoms	RSCC	RSR	B-factors(Å ²)	Q<0.9
2	5B4	A	1401	37/37	0.95	0.15	31,32,37,37	0
2	5B4	B	1401	37/37	0.96	0.15	29,32,35,40	0

The following is a graphical depiction of the model fit to experimental electron density of all instances of the Ligand of Interest. In addition, ligands with molecular weight > 250 and outliers as shown on the geometry validation Tables will also be included. Each fit is shown from different orientation to approximate a three-dimensional view.





6.5 Other polymers [i](#)

There are no such residues in this entry.