



# Full wwPDB X-ray Structure Validation Report ⓘ

May 24, 2020 – 11:15 am BST

PDB ID : 4DI2  
Title : Crystal structure of BACE1 in complex with hydroxyethylamine inhibitor 37  
Authors : Whittington, D.A.; Long, A.M.  
Deposited on : 2012-01-30  
Resolution : 2.00 Å(reported)

This is a Full wwPDB X-ray Structure Validation Report for a publicly released PDB entry.

We welcome your comments at [validation@mail.wwpdb.org](mailto:validation@mail.wwpdb.org)

A user guide is available at

<https://www.wwpdb.org/validation/2017/XrayValidationReportHelp>

with specific help available everywhere you see the ⓘ symbol.

---

The following versions of software and data (see [references ⓘ](#)) were used in the production of this report:

MolProbity : 4.02b-467  
Mogul : 1.8.5 (274361), CSD as541be (2020)  
Xtriage (Phenix) : 1.13  
EDS : 2.11  
buster-report : 1.1.7 (2018)  
Percentile statistics : 20191225.v01 (using entries in the PDB archive December 25th 2019)  
Refmac : 5.8.0158  
CCP4 : 7.0.044 (Gargrove)  
Ideal geometry (proteins) : Engh & Huber (2001)  
Ideal geometry (DNA, RNA) : Parkinson et al. (1996)  
Validation Pipeline (wwPDB-VP) : 2.11

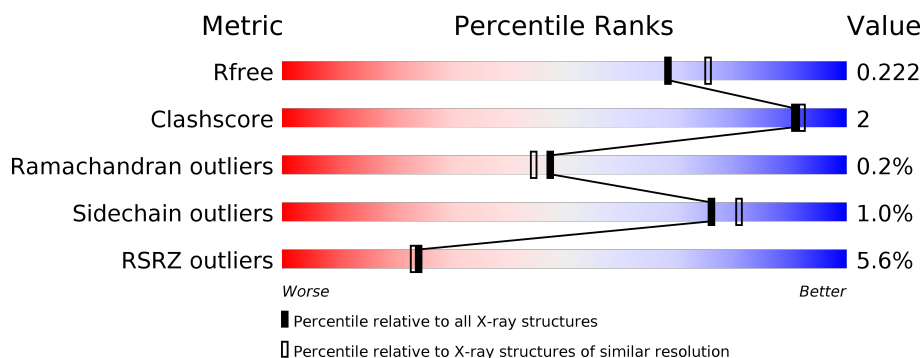
# 1 Overall quality at a glance

The following experimental techniques were used to determine the structure:

## *X-RAY DIFFRACTION*

The reported resolution of this entry is 2.00 Å.

Percentile scores (ranging between 0-100) for global validation metrics of the entry are shown in the following graphic. The table shows the number of entries on which the scores are based.



Metric	Whole archive (#Entries)	Similar resolution (#Entries, resolution range(Å))
$R_{free}$	130704	8085 (2.00-2.00)
Clashscore	141614	9178 (2.00-2.00)
Ramachandran outliers	138981	9054 (2.00-2.00)
Sidechain outliers	138945	9053 (2.00-2.00)
RSRZ outliers	127900	7900 (2.00-2.00)

The table below summarises the geometric issues observed across the polymeric chains and their fit to the electron density. The red, orange, yellow and green segments on the lower bar indicate the fraction of residues that contain outliers for  $\geq 3$ , 2, 1 and 0 types of geometric quality criteria respectively. A grey segment represents the fraction of residues that are not modelled. The numeric value for each fraction is indicated below the corresponding segment, with a dot representing fractions  $\leq 5\%$ . The upper red bar (where present) indicates the fraction of residues that have poor fit to the electron density. The numeric value is given above the bar.

Mol	Chain	Length	Quality of chain
1	A	411	<div> <div>3%</div> <div> <div></div> <div>86%</div> <div>5%</div> <div>9%</div> </div> </div>
1	B	411	<div> <div>4%</div> <div> <div></div> <div>85%</div> <div>6%</div> <div>9%</div> </div> </div>
1	C	411	<div> <div>8%</div> <div> <div></div> <div>87%</div> <div>•</div> <div>10%</div> </div> </div>

## 2 Entry composition

There are 4 unique types of molecules in this entry. The entry contains 9934 atoms, of which 0 are hydrogens and 0 are deuteriums.

In the tables below, the ZeroOcc column contains the number of atoms modelled with zero occupancy, the AltConf column contains the number of residues with at least one atom in alternate conformation and the Trace column contains the number of residues modelled with at most 2 atoms.

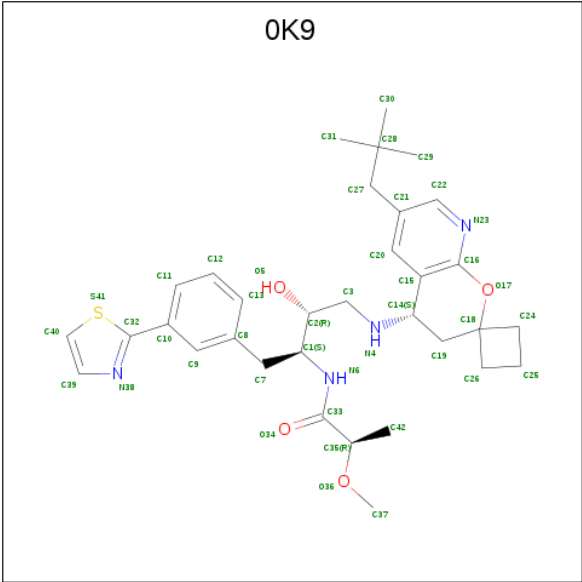
- Molecule 1 is a protein called Beta-secretase 1.

Mol	Chain	Residues	Atoms					ZeroOcc	AltConf	Trace
1	A	375	Total	C	N	O	S	0	0	0
			2951	1891	492	554	14			
1	B	375	Total	C	N	O	S	0	0	0
			2952	1889	491	558	14			
1	C	371	Total	C	N	O	S	0	0	0
			2923	1875	486	548	14			

There are 6 discrepancies between the modelled and reference sequences:

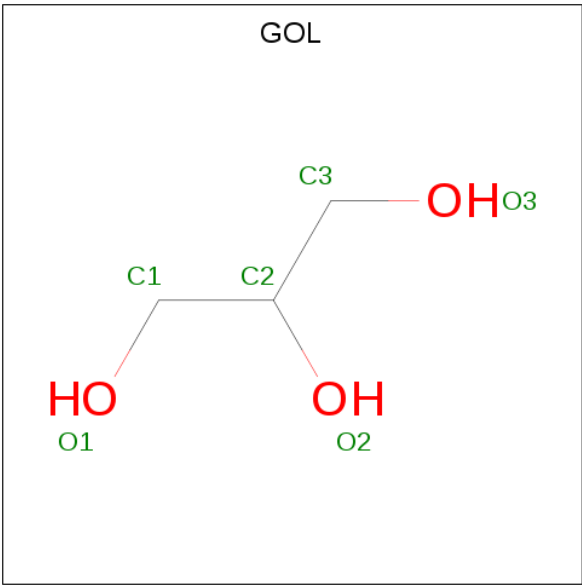
Chain	Residue	Modelled	Actual	Comment	Reference
A	-5	LYS	ARG	ENGINEERED MUTATION	UNP P56817
A	-4	LYS	ARG	ENGINEERED MUTATION	UNP P56817
B	-5	LYS	ARG	ENGINEERED MUTATION	UNP P56817
B	-4	LYS	ARG	ENGINEERED MUTATION	UNP P56817
C	-5	LYS	ARG	ENGINEERED MUTATION	UNP P56817
C	-4	LYS	ARG	ENGINEERED MUTATION	UNP P56817

- Molecule 2 is (2R)-N-{(2S,3R)-4-[[{(4'S)-6'-(2,2-dimethylpropyl)-3',4'-dihydrospiro[cyclobutane-1,2'-pyrano[2,3-b]pyridin]-4'-yl]amino}-3-hydroxy-1-[3-(1,3-thiazol-2-yl)phenyl]butan-2-yl]-2-methoxypropanamide (three-letter code: 0K9) (formula: C<sub>33</sub>H<sub>44</sub>N<sub>4</sub>O<sub>4</sub>S).



Mol	Chain	Residues	Atoms					ZeroOcc	AltConf
2	A	1	Total	C	N	O	S	0	0
			42	33	4	4	1		
2	B	1	Total	C	N	O	S	0	0
			42	33	4	4	1		
2	C	1	Total	C	N	O	S	0	0
			42	33	4	4	1		

- Molecule 3 is GLYCEROL (three-letter code: GOL) (formula: C<sub>3</sub>H<sub>8</sub>O<sub>3</sub>).



Mol	Chain	Residues	Atoms			ZeroOcc	AltConf
3	A	1	Total	C	O	0	0
			6	3	3		

Continued on next page...

*Continued from previous page...*

Mol	Chain	Residues	Atoms			ZeroOcc	AltConf
3	A	1	Total	C	O	0	0
			6	3	3		
3	B	1	Total	C	O	0	0
			6	3	3		
3	B	1	Total	C	O	0	0
			6	3	3		
3	C	1	Total	C	O	0	0
			6	3	3		

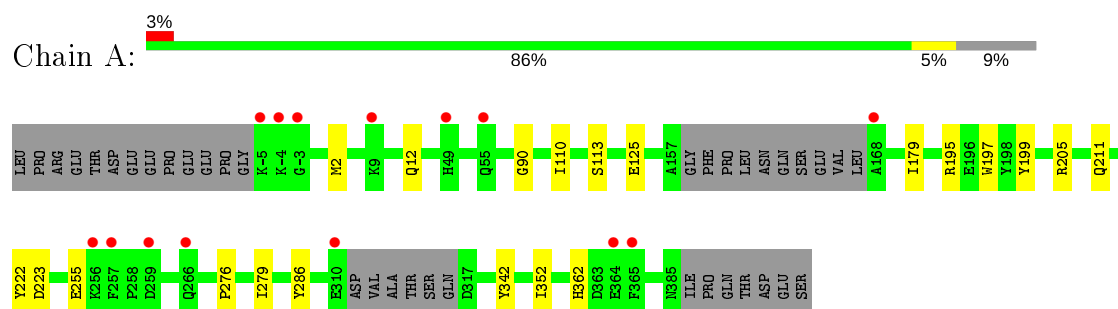
- Molecule 4 is water.

Mol	Chain	Residues	Atoms		ZeroOcc	AltConf
4	A	331	Total	O	0	0
			331	331		
4	B	336	Total	O	0	0
			336	336		
4	C	285	Total	O	0	0
			285	285		

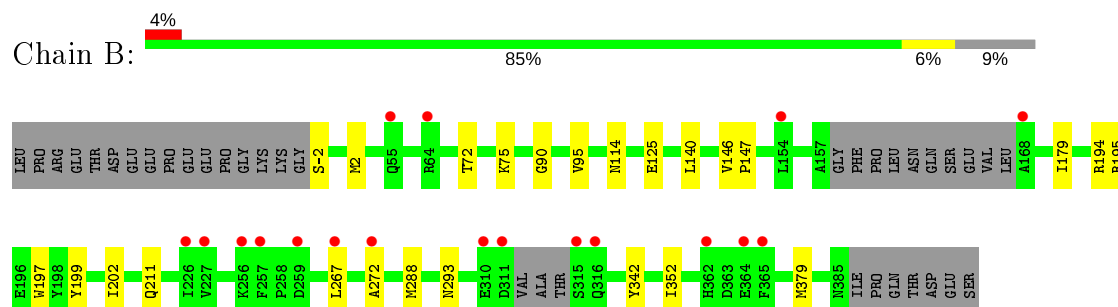
### 3 Residue-property plots [i](#)

These plots are drawn for all protein, RNA and DNA chains in the entry. The first graphic for a chain summarises the proportions of the various outlier classes displayed in the second graphic. The second graphic shows the sequence view annotated by issues in geometry and electron density. Residues are color-coded according to the number of geometric quality criteria for which they contain at least one outlier: green = 0, yellow = 1, orange = 2 and red = 3 or more. A red dot above a residue indicates a poor fit to the electron density ( $RSRZ > 2$ ). Stretches of 2 or more consecutive residues without any outlier are shown as a green connector. Residues present in the sample, but not in the model, are shown in grey.

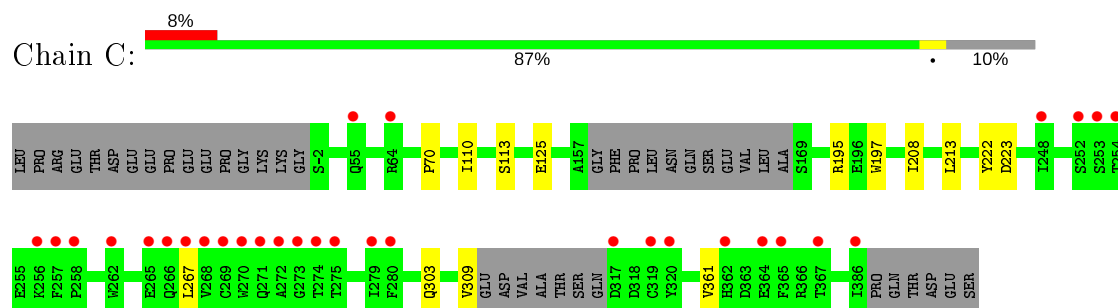
#### • Molecule 1: Beta-secretase 1



#### • Molecule 1: Beta-secretase 1



#### • Molecule 1: Beta-secretase 1



## 4 Data and refinement statistics

Property	Value	Source
Space group	P 1 21 1	Depositor
Cell constants a, b, c, $\alpha$ , $\beta$ , $\gamma$	82.70Å 104.77Å 101.56Å 90.00° 103.87° 90.00°	Depositor
Resolution (Å)	49.33 – 2.00 49.30 – 2.00	Depositor EDS
% Data completeness (in resolution range)	99.9 (49.33-2.00) 99.9 (49.30-2.00)	Depositor EDS
$R_{merge}$	0.07	Depositor
$R_{sym}$	(Not available)	Depositor
$\langle I/\sigma(I) \rangle$ <sup>1</sup>	1.82 (at 2.00Å)	Xtriage
Refinement program	REFMAC	Depositor
R, $R_{free}$	0.195 , 0.229 0.192 , 0.222	Depositor DCC
$R_{free}$ test set	5714 reflections (5.04%)	wwPDB-VP
Wilson B-factor (Å <sup>2</sup> )	42.7	Xtriage
Anisotropy	0.047	Xtriage
Bulk solvent $k_{sol}$ (e/Å <sup>3</sup> ), $B_{sol}$ (Å <sup>2</sup> )	0.34 , 52.5	EDS
L-test for twinning <sup>2</sup>	$\langle  L  \rangle = 0.50$ , $\langle L^2 \rangle = 0.34$	Xtriage
Estimated twinning fraction	No twinning to report.	Xtriage
$F_o, F_c$ correlation	0.96	EDS
Total number of atoms	9934	wwPDB-VP
Average B, all atoms (Å <sup>2</sup> )	47.0	wwPDB-VP

Xtriage's analysis on translational NCS is as follows: *The largest off-origin peak in the Patterson function is 3.87% of the height of the origin peak. No significant pseudotranslation is detected.*

<sup>1</sup>Intensities estimated from amplitudes.

<sup>2</sup>Theoretical values of  $\langle |L| \rangle$ ,  $\langle L^2 \rangle$  for acentric reflections are 0.5, 0.333 respectively for untwinned datasets, and 0.375, 0.2 for perfectly twinned datasets.

## 5 Model quality

### 5.1 Standard geometry

Bond lengths and bond angles in the following residue types are not validated in this section: GOL, 0K9

The Z score for a bond length (or angle) is the number of standard deviations the observed value is removed from the expected value. A bond length (or angle) with  $|Z| > 5$  is considered an outlier worth inspection. RMSZ is the root-mean-square of all Z scores of the bond lengths (or angles).

Mol	Chain	Bond lengths		Bond angles	
		RMSZ	# Z  >5	RMSZ	# Z  >5
1	A	0.41	0/3025	0.54	0/4106
1	B	0.41	0/3026	0.53	0/4110
1	C	0.41	0/2997	0.53	0/4071
All	All	0.41	0/9048	0.54	0/12287

There are no bond length outliers.

There are no bond angle outliers.

There are no chirality outliers.

There are no planarity outliers.

### 5.2 Too-close contacts

In the following table, the Non-H and H(model) columns list the number of non-hydrogen atoms and hydrogen atoms in the chain respectively. The H(added) column lists the number of hydrogen atoms added and optimized by MolProbity. The Clashes column lists the number of clashes within the asymmetric unit, whereas Symm-Clashes lists symmetry related clashes.

Mol	Chain	Non-H	H(model)	H(added)	Clashes	Symm-Clashes
1	A	2951	0	2873	11	0
1	B	2952	0	2861	12	0
1	C	2923	0	2844	7	0
2	A	42	0	44	0	0
2	B	42	0	44	0	0
2	C	42	0	44	0	0
3	A	12	0	16	0	0
3	B	12	0	16	0	0
3	C	6	0	8	0	0
4	A	331	0	0	1	0

*Continued on next page...*



*Continued from previous page...*

Mol	Chain	Non-H	H(model)	H(added)	Clashes	Symm-Clashes
4	B	336	0	0	2	0
4	C	285	0	0	0	0
All	All	9934	0	8750	30	0

The all-atom clashscore is defined as the number of clashes found per 1000 atoms (including hydrogen atoms). The all-atom clashscore for this structure is 2.

All (30) close contacts within the same asymmetric unit are listed below, sorted by their clash magnitude.

Atom-1	Atom-2	Interatomic distance (Å)	Clash overlap (Å)
1:C:110:ILE:HB	1:C:113:SER:HB3	1.73	0.70
1:A:12:GLN:NE2	1:A:113:SER:HA	2.18	0.59
1:B:95:VAL:HG11	1:B:140:LEU:HA	1.89	0.54
1:B:194:ARG:HD2	1:B:202:ILE:HD11	1.90	0.53
1:B:288:MET:HE1	1:B:379:MET:HA	1.89	0.53
1:B:125:GLU:OE2	1:B:195:ARG:NH2	2.36	0.52
1:A:125:GLU:OE2	1:A:195:ARG:NH2	2.40	0.50
1:C:208:ILE:HD12	1:C:213:LEU:HD21	1.96	0.48
1:C:267:LEU:HD22	1:C:309:VAL:HG21	1.97	0.46
1:A:222:TYR:HA	1:A:223:ASP:HA	1.69	0.46
4:A:610:HOH:O	1:B:75:LYS:HD3	2.16	0.46
1:B:379:MET:HE1	4:B:736:HOH:O	2.14	0.46
1:B:179:ILE:HG23	1:B:342:TYR:HE2	1.82	0.45
1:A:2:MET:HG2	1:A:90:GLY:HA2	1.99	0.45
1:C:222:TYR:HA	1:C:223:ASP:HA	1.70	0.45
1:A:205:ARG:HB3	1:A:286:TYR:HB2	2.00	0.43
1:A:179:ILE:HG23	1:A:342:TYR:HE2	1.84	0.43
1:B:2:MET:HG2	1:B:90:GLY:HA2	2.01	0.43
1:A:276:PRO:O	1:A:279:ILE:HG12	2.18	0.43
1:B:199:TYR:HB3	1:B:352:ILE:HD11	2.00	0.43
1:B:72:THR:HG21	4:B:760:HOH:O	2.18	0.43
1:C:303:GLN:HB3	1:C:361:VAL:HG21	2.00	0.43
1:A:12:GLN:HE21	1:A:113:SER:HA	1.85	0.42
1:A:199:TYR:HB3	1:A:352:ILE:HD11	2.03	0.41
1:C:125:GLU:OE2	1:C:195:ARG:NH2	2.38	0.41
1:A:255:GLU:HG3	1:A:279:ILE:CD1	2.50	0.41
1:B:202:ILE:CG2	1:B:288:MET:HE3	2.51	0.41
1:C:303:GLN:CB	1:C:361:VAL:HG21	2.51	0.41
1:A:110:ILE:HB	1:A:113:SER:HB3	2.03	0.41
1:B:146:VAL:HA	1:B:147:PRO:HD3	1.95	0.40

There are no symmetry-related clashes.

## 5.3 Torsion angles [i](#)

### 5.3.1 Protein backbone [i](#)

In the following table, the Percentiles column shows the percent Ramachandran outliers of the chain as a percentile score with respect to all X-ray entries followed by that with respect to entries of similar resolution.

The Analysed column shows the number of residues for which the backbone conformation was analysed, and the total number of residues.

Mol	Chain	Analysed	Favoured	Allowed	Outliers	Percentiles	
1	A	369/411 (90%)	358 (97%)	11 (3%)	0	100	100
1	B	369/411 (90%)	361 (98%)	7 (2%)	1 (0%)	41	37
1	C	365/411 (89%)	357 (98%)	7 (2%)	1 (0%)	41	37
All	All	1103/1233 (90%)	1076 (98%)	25 (2%)	2 (0%)	47	44

All (2) Ramachandran outliers are listed below:

Mol	Chain	Res	Type
1	B	272	ALA
1	C	70	PRO

### 5.3.2 Protein sidechains [i](#)

In the following table, the Percentiles column shows the percent sidechain outliers of the chain as a percentile score with respect to all X-ray entries followed by that with respect to entries of similar resolution.

The Analysed column shows the number of residues for which the sidechain conformation was analysed, and the total number of residues.

Mol	Chain	Analysed	Rotameric	Outliers	Percentiles	
1	A	319/352 (91%)	316 (99%)	3 (1%)	78	83
1	B	320/352 (91%)	314 (98%)	6 (2%)	57	61
1	C	317/352 (90%)	316 (100%)	1 (0%)	92	95
All	All	956/1056 (90%)	946 (99%)	10 (1%)	76	81

All (10) residues with a non-rotameric sidechain are listed below:

Mol	Chain	Res	Type
1	A	197	TRP
1	A	211	GLN
1	A	362	HIS
1	B	-2	SER
1	B	114	ASN
1	B	197	TRP
1	B	211	GLN
1	B	267	LEU
1	B	293	ASN
1	C	197	TRP

Some sidechains can be flipped to improve hydrogen bonding and reduce clashes. All (7) such sidechains are listed below:

Mol	Chain	Res	Type
1	A	12	GLN
1	A	114	ASN
1	A	211	GLN
1	B	114	ASN
1	B	211	GLN
1	B	293	ASN
1	C	114	ASN

### 5.3.3 RNA [i](#)

There are no RNA molecules in this entry.

## 5.4 Non-standard residues in protein, DNA, RNA chains [i](#)

There are no non-standard protein/DNA/RNA residues in this entry.

## 5.5 Carbohydrates [i](#)

There are no carbohydrates in this entry.

## 5.6 Ligand geometry [i](#)

8 ligands are modelled in this entry.

In the following table, the Counts columns list the number of bonds (or angles) for which Mogul statistics could be retrieved, the number of bonds (or angles) that are observed in the model and

the number of bonds (or angles) that are defined in the Chemical Component Dictionary. The Link column lists molecule types, if any, to which the group is linked. The Z score for a bond length (or angle) is the number of standard deviations the observed value is removed from the expected value. A bond length (or angle) with  $|Z| > 2$  is considered an outlier worth inspection. RMSZ is the root-mean-square of all Z scores of the bond lengths (or angles).

Mol	Type	Chain	Res	Link	Bond lengths			Bond angles		
					Counts	RMSZ	# Z  > 2	Counts	RMSZ	# Z  > 2
3	GOL	A	502	-	5,5,5	0.36	0	5,5,5	0.30	0
2	0K9	B	501	-	42,46,46	1.10	2 (4%)	47,67,67	1.69	11 (23%)
2	0K9	A	501	-	42,46,46	1.07	1 (2%)	47,67,67	1.61	10 (21%)
3	GOL	B	503	-	5,5,5	0.33	0	5,5,5	0.20	0
3	GOL	A	503	-	5,5,5	0.40	0	5,5,5	0.17	0
2	0K9	C	501	-	42,46,46	1.04	2 (4%)	47,67,67	1.57	11 (23%)
3	GOL	B	502	-	5,5,5	0.47	0	5,5,5	0.20	0
3	GOL	C	502	-	5,5,5	0.44	0	5,5,5	0.12	0

In the following table, the Chirals column lists the number of chiral outliers, the number of chiral centers analysed, the number of these observed in the model and the number defined in the Chemical Component Dictionary. Similar counts are reported in the Torsion and Rings columns. '-' means no outliers of that kind were identified.

Mol	Type	Chain	Res	Link	Chirals	Torsions	Rings
3	GOL	A	502	-	-	0/4/4/4	-
2	0K9	B	501	-	-	1/32/54/54	0/5/5/5
2	0K9	A	501	-	-	2/32/54/54	0/5/5/5
3	GOL	B	503	-	-	0/4/4/4	-
3	GOL	A	503	-	-	0/4/4/4	-
2	0K9	C	501	-	-	0/32/54/54	0/5/5/5
3	GOL	B	502	-	-	0/4/4/4	-
3	GOL	C	502	-	-	0/4/4/4	-

All (5) bond length outliers are listed below:

Mol	Chain	Res	Type	Atoms	Z	Observed(Å)	Ideal(Å)
2	B	501	0K9	C15-C14	4.32	1.56	1.52
2	A	501	0K9	C15-C14	4.14	1.55	1.52
2	C	501	0K9	C15-C14	3.71	1.55	1.52
2	B	501	0K9	C32-S41	-3.33	1.69	1.73
2	C	501	0K9	C27-C21	2.06	1.54	1.51

All (32) bond angle outliers are listed below:

Mol	Chain	Res	Type	Atoms	Z	Observed(°)	Ideal(°)
2	B	501	0K9	C24-C18-C19	-5.07	111.11	117.96
2	C	501	0K9	C24-C18-C19	-4.22	112.25	117.96
2	B	501	0K9	C39-N38-C32	4.20	115.22	104.39
2	A	501	0K9	C39-N38-C32	4.15	115.10	104.39
2	C	501	0K9	C39-N38-C32	4.13	115.04	104.39
2	A	501	0K9	C24-C18-C19	-4.05	112.48	117.96
2	B	501	0K9	C15-C16-N23	-3.88	120.52	125.36
2	A	501	0K9	C26-C18-C19	-3.87	112.73	117.96
2	A	501	0K9	C15-C16-N23	-3.81	120.61	125.36
2	C	501	0K9	C15-C16-N23	-3.75	120.67	125.36
2	C	501	0K9	C26-C18-C19	-3.30	113.50	117.96
2	B	501	0K9	C26-C18-C19	-3.16	113.69	117.96
2	A	501	0K9	C15-C20-C21	-3.09	119.09	121.98
2	B	501	0K9	C15-C20-C21	-3.02	119.16	121.98
2	C	501	0K9	C15-C20-C21	-2.90	119.26	121.98
2	A	501	0K9	C28-C27-C21	-2.87	111.76	116.86
2	C	501	0K9	C20-C21-C22	2.81	119.42	116.71
2	B	501	0K9	O17-C18-C26	2.71	116.29	109.41
2	B	501	0K9	C20-C21-C22	2.70	119.32	116.71
2	A	501	0K9	C20-C21-C22	2.69	119.31	116.71
2	B	501	0K9	C20-C15-C16	2.60	118.50	115.55
2	B	501	0K9	C28-C27-C21	-2.60	112.23	116.86
2	A	501	0K9	C20-C15-C16	2.44	118.32	115.55
2	C	501	0K9	C28-C27-C21	-2.28	112.80	116.86
2	C	501	0K9	C20-C15-C16	2.22	118.07	115.55
2	B	501	0K9	C22-N23-C16	2.19	121.91	116.27
2	C	501	0K9	C22-N23-C16	2.18	121.86	116.27
2	B	501	0K9	C21-C22-N23	-2.15	120.57	123.95
2	C	501	0K9	O17-C18-C26	2.15	114.86	109.41
2	A	501	0K9	O17-C18-C26	2.14	114.86	109.41
2	A	501	0K9	C22-N23-C16	2.09	121.64	116.27
2	C	501	0K9	C21-C22-N23	-2.06	120.72	123.95

There are no chirality outliers.

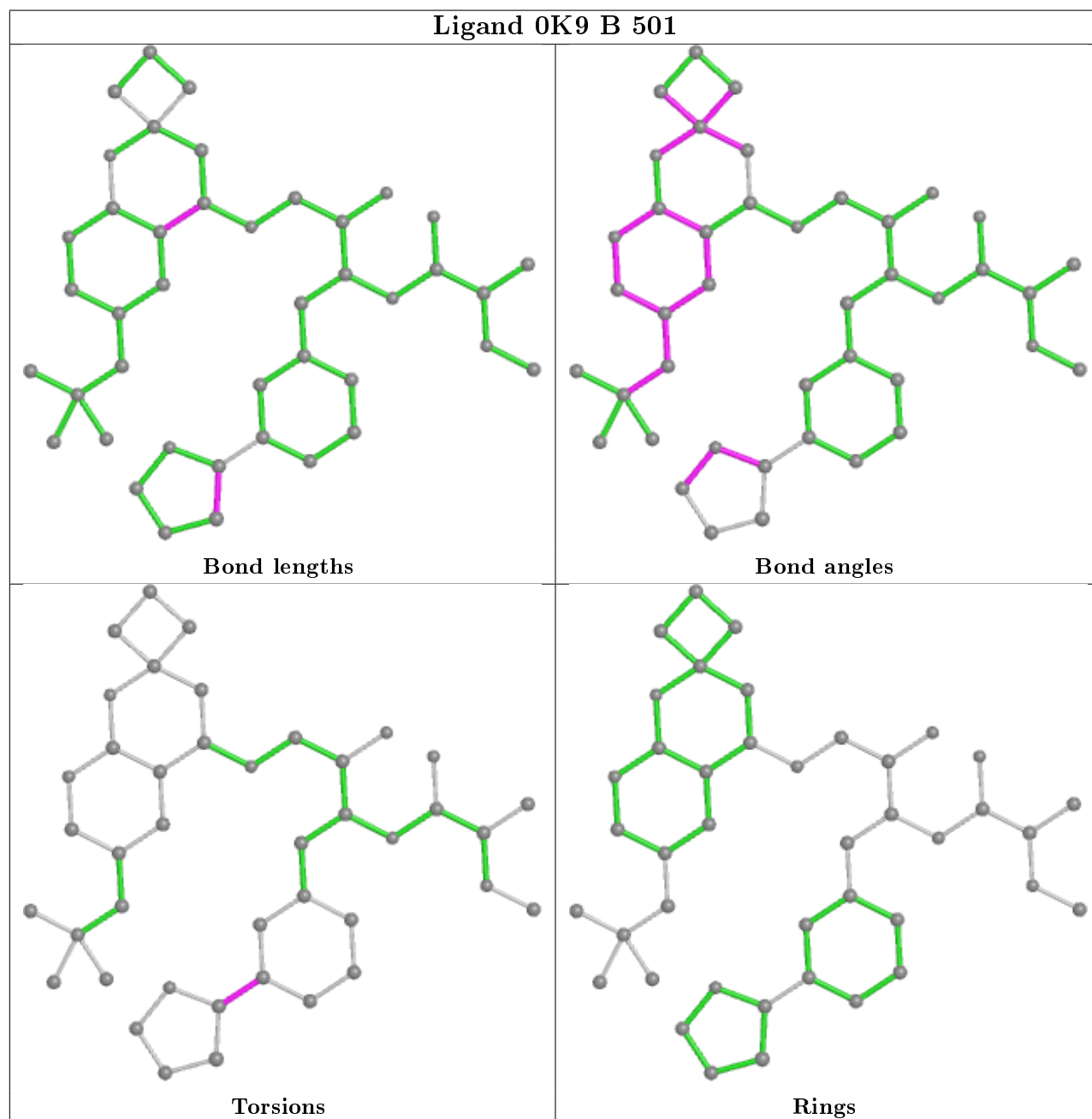
All (3) torsion outliers are listed below:

Mol	Chain	Res	Type	Atoms
2	B	501	0K9	C9-C10-C32-N38
2	A	501	0K9	C9-C10-C32-N38
2	A	501	0K9	C33-C35-O36-C37

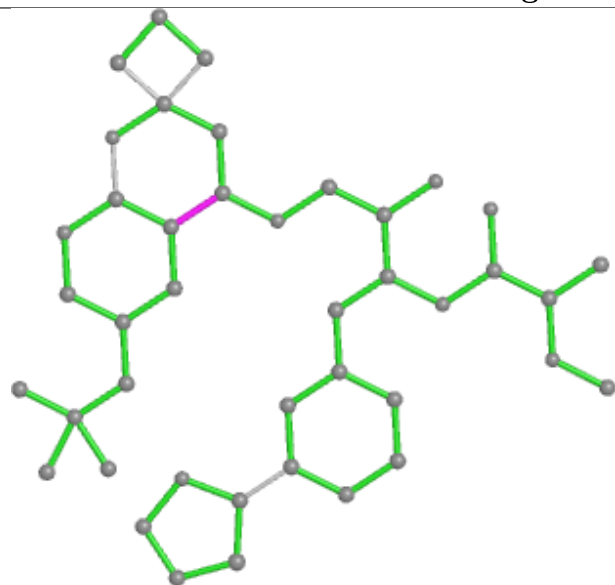
There are no ring outliers.

No monomer is involved in short contacts.

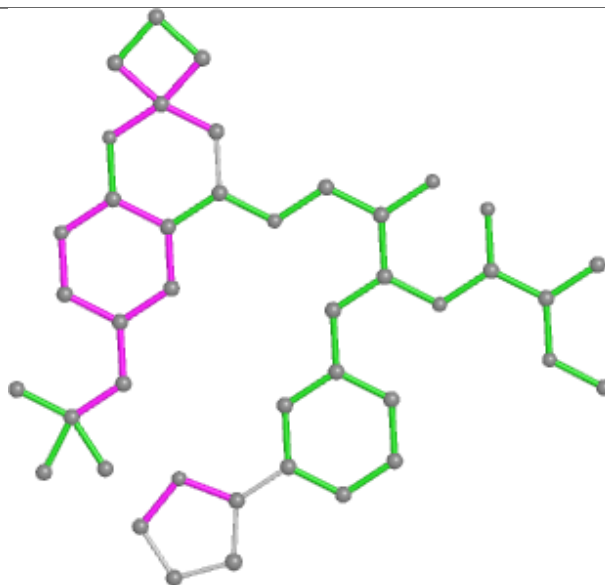
The following is a two-dimensional graphical depiction of Mogul quality analysis of bond lengths, bond angles, torsion angles, and ring geometry for all instances of the Ligand of Interest. In addition, ligands with molecular weight > 250 and outliers as shown on the validation Tables will also be included. For torsion angles, if less than 5% of the Mogul distribution of torsion angles is within 10 degrees of the torsion angle in question, then that torsion angle is considered an outlier. Any bond that is central to one or more torsion angles identified as an outlier by Mogul will be highlighted in the graph. For rings, the root-mean-square deviation (RMSD) between the ring in question and similar rings identified by Mogul is calculated over all ring torsion angles. If the average RMSD is greater than 60 degrees and the minimal RMSD between the ring in question and any Mogul-identified rings is also greater than 60 degrees, then that ring is considered an outlier. The outliers are highlighted in purple. The color gray indicates Mogul did not find sufficient equivalents in the CSD to analyse the geometry.



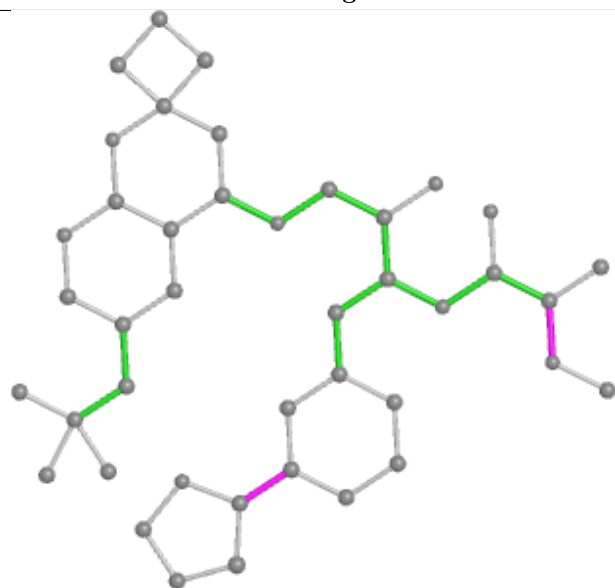
## Ligand 0K9 A 501



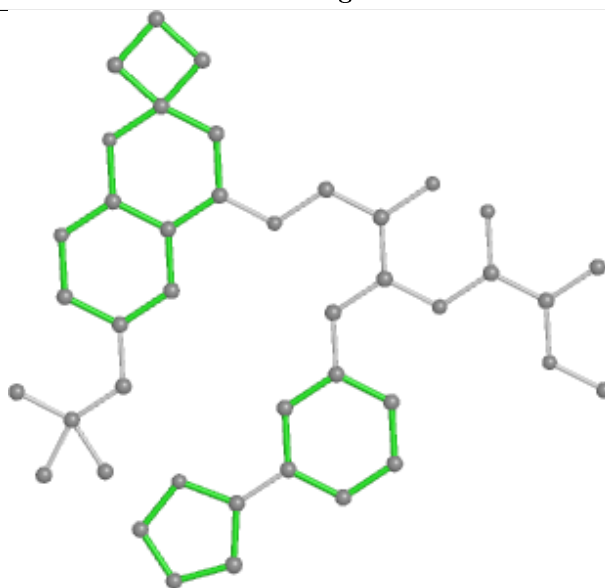
Bond lengths



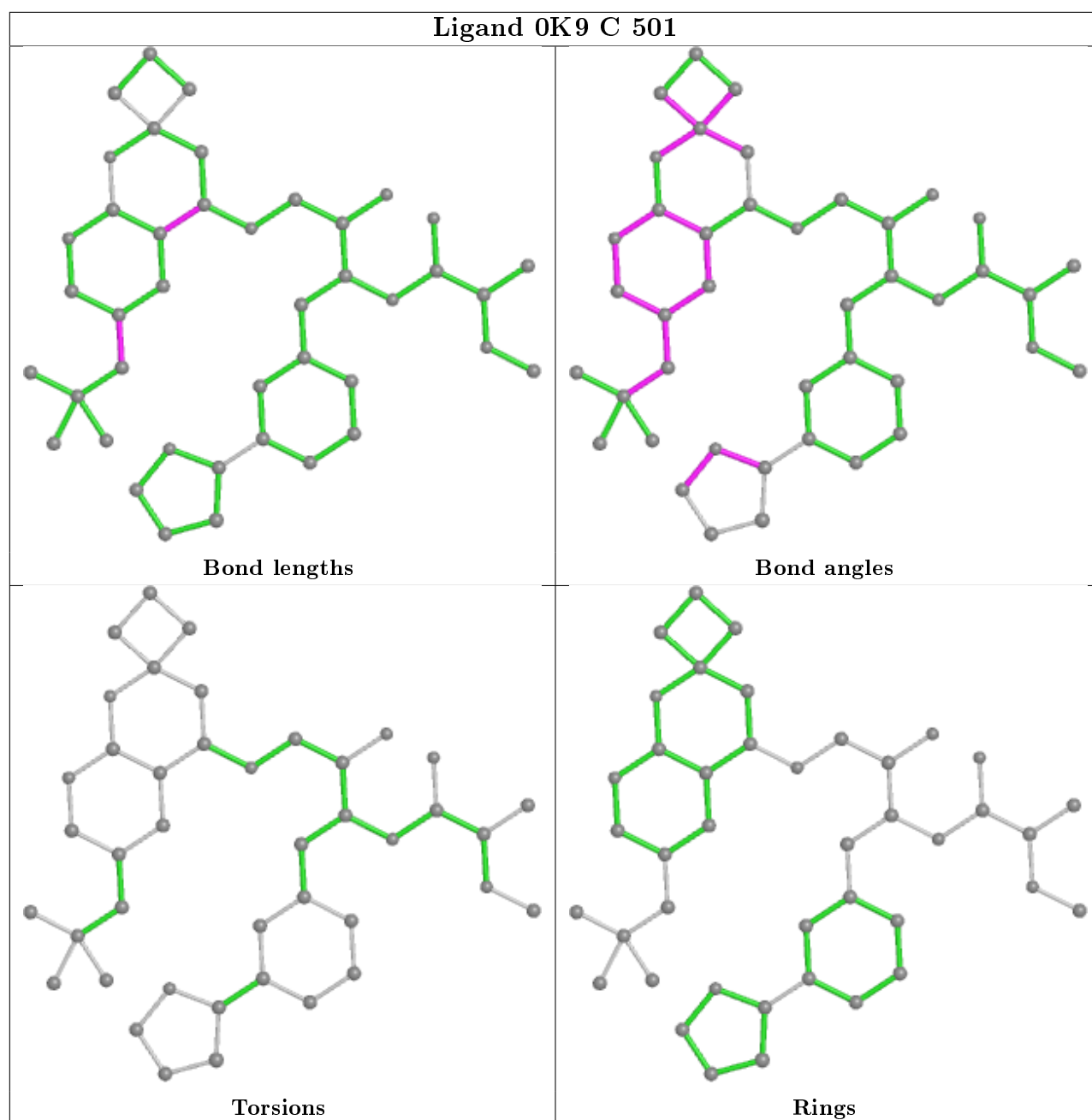
Bond angles



Torsions



Rings



## 5.7 Other polymers [i](#)

There are no such residues in this entry.

## 5.8 Polymer linkage issues [i](#)

There are no chain breaks in this entry.



## 6 Fit of model and data ⓘ

### 6.1 Protein, DNA and RNA chains ⓘ

In the following table, the column labelled ‘#RSRZ > 2’ contains the number (and percentage) of RSRZ outliers, followed by percent RSRZ outliers for the chain as percentile scores relative to all X-ray entries and entries of similar resolution. The OWAB column contains the minimum, median, 95<sup>th</sup> percentile and maximum values of the occupancy-weighted average B-factor per residue. The column labelled ‘Q < 0.9’ lists the number of (and percentage) of residues with an average occupancy less than 0.9.

Mol	Chain	Analysed	<RSRZ>	#RSRZ > 2	OWAB(Å <sup>2</sup> )	Q < 0.9
1	A	375/411 (91%)	0.12	14 (3%) 41 41	29, 43, 66, 72	0
1	B	375/411 (91%)	0.22	18 (4%) 30 29	30, 44, 66, 80	0
1	C	371/411 (90%)	0.30	31 (8%) 11 10	29, 46, 87, 98	0
All	All	1121/1233 (90%)	0.21	63 (5%) 24 23	29, 44, 70, 98	0

All (63) RSRZ outliers are listed below:

Mol	Chain	Res	Type	RSRZ
1	C	254	THR	6.0
1	C	272	ALA	5.6
1	C	365	PHE	5.5
1	C	253	SER	5.1
1	C	257	PHE	4.9
1	C	270	TRP	4.7
1	C	256	LYS	4.4
1	C	268	VAL	4.3
1	B	311	ASP	4.2
1	B	316	GLN	3.9
1	B	362	HIS	3.8
1	B	365	PHE	3.7
1	C	274	THR	3.7
1	C	273	GLY	3.7
1	B	315	SER	3.5
1	C	319	CYS	3.3
1	B	310	GLU	3.3
1	A	-3	GLY	3.2
1	C	269	CYS	3.2
1	B	256	LYS	3.2
1	C	317	ASP	3.1
1	C	280	PHE	3.0
1	A	310	GLU	2.9

*Continued on next page...*

*Continued from previous page...*

Mol	Chain	Res	Type	RSRZ
1	C	364	GLU	2.9
1	A	364	GLU	2.9
1	C	362	HIS	2.8
1	C	267	LEU	2.8
1	C	386	ILE	2.8
1	A	365	PHE	2.8
1	B	272	ALA	2.7
1	A	256	LYS	2.7
1	C	279	ILE	2.6
1	C	252	SER	2.6
1	C	266	GLN	2.6
1	A	9	LYS	2.5
1	C	64	ARG	2.5
1	A	-5	LYS	2.4
1	B	226	ILE	2.4
1	B	154	LEU	2.3
1	B	364	GLU	2.3
1	B	55	GLN	2.3
1	B	64	ARG	2.3
1	C	320	TYR	2.3
1	B	267	LEU	2.3
1	C	262	TRP	2.3
1	C	248	ILE	2.3
1	C	55	GLN	2.3
1	B	257	PHE	2.2
1	C	265	GLU	2.2
1	A	49	HIS	2.2
1	C	271	GLN	2.2
1	A	259	ASP	2.2
1	B	259	ASP	2.2
1	A	55	GLN	2.2
1	C	275	THR	2.2
1	C	258	PRO	2.2
1	A	168	ALA	2.2
1	A	-4	LYS	2.1
1	A	257	PHE	2.1
1	B	168	ALA	2.1
1	C	367	THR	2.1
1	A	266	GLN	2.0
1	B	227	VAL	2.0

## 6.2 Non-standard residues in protein, DNA, RNA chains ⓘ

There are no non-standard protein/DNA/RNA residues in this entry.

## 6.3 Carbohydrates ⓘ

There are no carbohydrates in this entry.

## 6.4 Ligands ⓘ

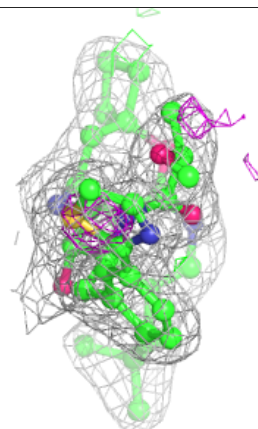
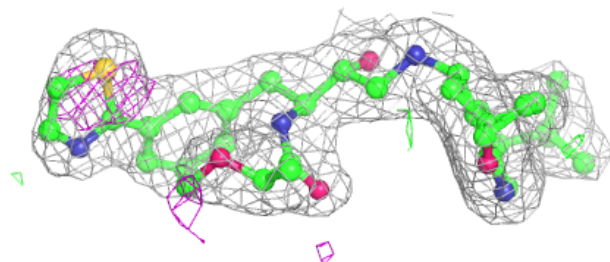
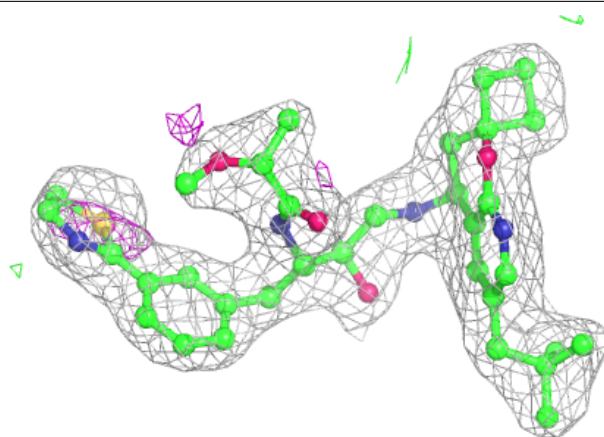
In the following table, the Atoms column lists the number of modelled atoms in the group and the number defined in the chemical component dictionary. The B-factors column lists the minimum, median, 95<sup>th</sup> percentile and maximum values of B factors of atoms in the group. The column labelled 'Q< 0.9' lists the number of atoms with occupancy less than 0.9.

Mol	Type	Chain	Res	Atoms	RSCC	RSR	B-factors( $\text{\AA}^2$ )	Q<0.9
3	GOL	B	502	6/6	0.89	0.13	47,47,48,48	0
3	GOL	C	502	6/6	0.90	0.17	64,65,66,66	0
3	GOL	A	502	6/6	0.91	0.18	74,76,76,76	0
3	GOL	A	503	6/6	0.91	0.14	53,54,55,56	0
2	0K9	C	501	42/42	0.94	0.12	35,40,50,52	0
3	GOL	B	503	6/6	0.94	0.15	49,51,52,53	0
2	0K9	A	501	42/42	0.94	0.13	34,37,46,47	0
2	0K9	B	501	42/42	0.95	0.17	33,38,44,45	0

The following is a graphical depiction of the model fit to experimental electron density of all instances of the Ligand of Interest. In addition, ligands with molecular weight > 250 and outliers as shown on the geometry validation Tables will also be included. Each fit is shown from different orientation to approximate a three-dimensional view.

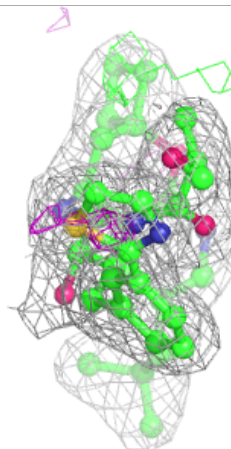
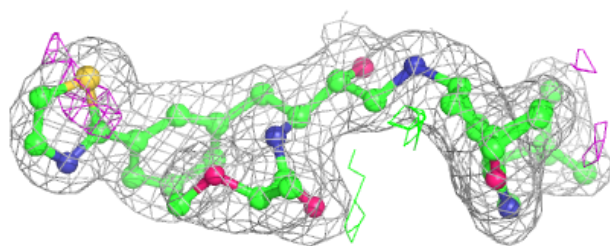
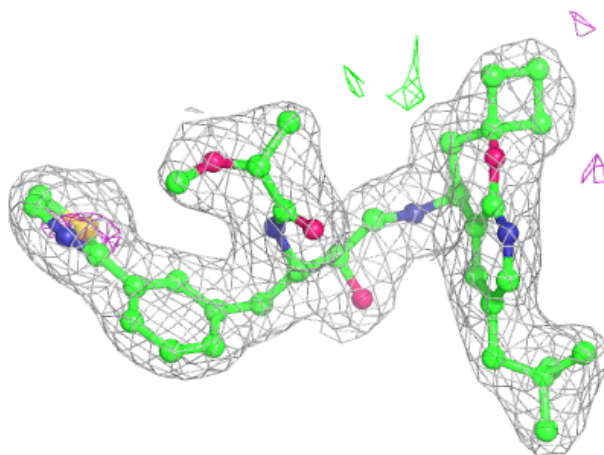
**Electron density around 0K9 C 501:**

$2mF_o-DF_c$  (at 0.7 rmsd) in gray  
 $mF_o-DF_c$  (at 3 rmsd) in purple (negative)  
and green (positive)



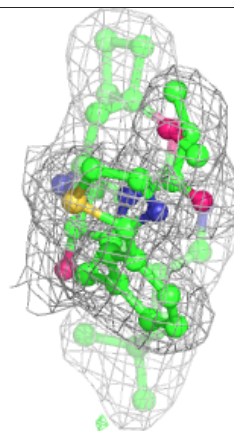
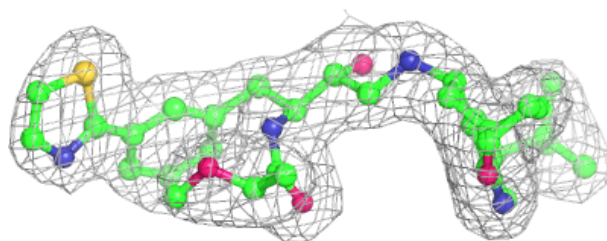
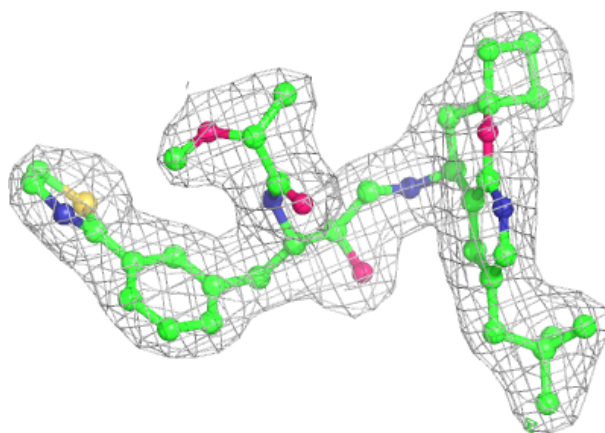
**Electron density around 0K9 A 501:**

$2mF_o-DF_c$  (at 0.7 rmsd) in gray  
 $mF_o-DF_c$  (at 3 rmsd) in purple (negative)  
and green (positive)



**Electron density around 0K9 B 501:**

$2mF_o-DF_c$  (at 0.7 rmsd) in gray  
 $mF_o-DF_c$  (at 3 rmsd) in purple (negative)  
and green (positive)



## 6.5 Other polymers ⓘ

There are no such residues in this entry.