



Full wwPDB X-ray Structure Validation Report ⓘ

May 21, 2020 – 07:41 pm BST

PDB ID : 2DJL
Title : Crystal structure of Trypanosoma cruzi dihydroorotate dehydrogenase in complex with succinate
Authors : Inaoka, D.K.; Shimizu, H.; Sakamoto, K.; Shiba, T.; Kurisu, G.; Nara, T.; Aoki, T.; Harada, S.; Kita, K.
Deposited on : 2006-04-04
Resolution : 1.38 Å(reported)

This is a Full wwPDB X-ray Structure Validation Report for a publicly released PDB entry.

We welcome your comments at validation@mail.wwpdb.org

A user guide is available at

<https://www.wwpdb.org/validation/2017/XrayValidationReportHelp>

with specific help available everywhere you see the ⓘ symbol.

The following versions of software and data (see [references ⓘ](#)) were used in the production of this report:

MolProbity : 4.02b-467
Mogul : 1.8.5 (274361), CSD as541be (2020)
Xtriage (Phenix) : 1.13
EDS : 2.11
buster-report : 1.1.7 (2018)
Percentile statistics : 20191225.v01 (using entries in the PDB archive December 25th 2019)
Refmac : 5.8.0158
CCP4 : 7.0.044 (Gargrove)
Ideal geometry (proteins) : Engh & Huber (2001)
Ideal geometry (DNA, RNA) : Parkinson et al. (1996)
Validation Pipeline (wwPDB-VP) : 2.11

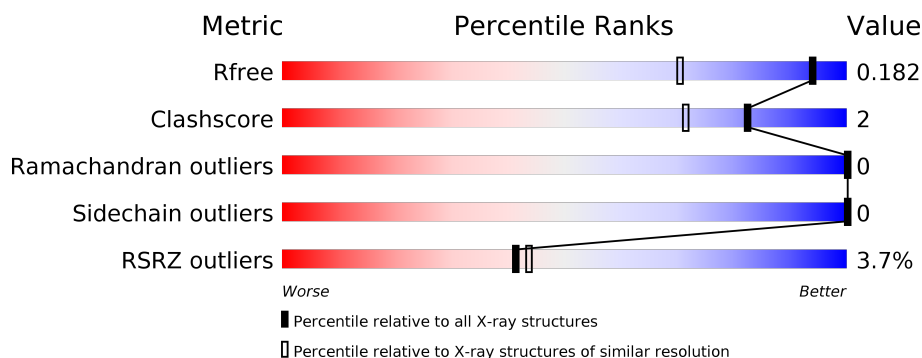
1 Overall quality at a glance

The following experimental techniques were used to determine the structure:

X-RAY DIFFRACTION

The reported resolution of this entry is 1.38 Å.

Percentile scores (ranging between 0-100) for global validation metrics of the entry are shown in the following graphic. The table shows the number of entries on which the scores are based.



Metric	Whole archive (#Entries)	Similar resolution (#Entries, resolution range(Å))
R_{free}	130704	2907 (1.40-1.36)
Clashscore	141614	3037 (1.40-1.36)
Ramachandran outliers	138981	2970 (1.40-1.36)
Sidechain outliers	138945	2969 (1.40-1.36)
RSRZ outliers	127900	2846 (1.40-1.36)

The table below summarises the geometric issues observed across the polymeric chains and their fit to the electron density. The red, orange, yellow and green segments on the lower bar indicate the fraction of residues that contain outliers for ≥ 3 , 2, 1 and 0 types of geometric quality criteria respectively. A grey segment represents the fraction of residues that are not modelled. The numeric value for each fraction is indicated below the corresponding segment, with a dot representing fractions $\leq 5\%$. The upper red bar (where present) indicates the fraction of residues that have poor fit to the electron density. The numeric value is given above the bar.

Mol	Chain	Length	Quality of chain
1	A	314	<div> <div>4%</div> <div> <div></div> <div>95%</div> <div></div> </div> <div></div> </div>
1	B	314	<div> <div>4%</div> <div> <div></div> <div>94%</div> <div>6%</div> </div> <div></div> </div>

2 Entry composition [i](#)

There are 6 unique types of molecules in this entry. The entry contains 5568 atoms, of which 0 are hydrogens and 0 are deuteriums.

In the tables below, the ZeroOcc column contains the number of atoms modelled with zero occupancy, the AltConf column contains the number of residues with at least one atom in alternate conformation and the Trace column contains the number of residues modelled with at most 2 atoms.

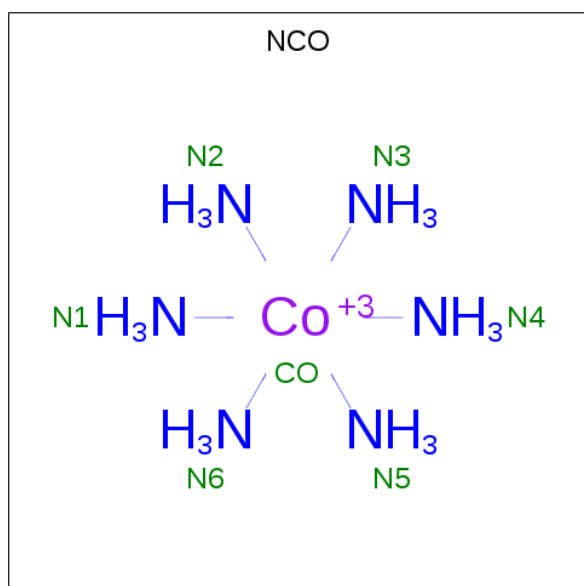
- Molecule 1 is a protein called dihydroorotate dehydrogenase.

Mol	Chain	Residues	Atoms					ZeroOcc	AltConf	Trace
1	A	312	Total	C	N	O	S	0	0	0
			2379	1525	395	440	19			
1	B	312	Total	C	N	O	S	0	0	0
			2379	1525	395	440	19			

There are 2 discrepancies between the modelled and reference sequences:

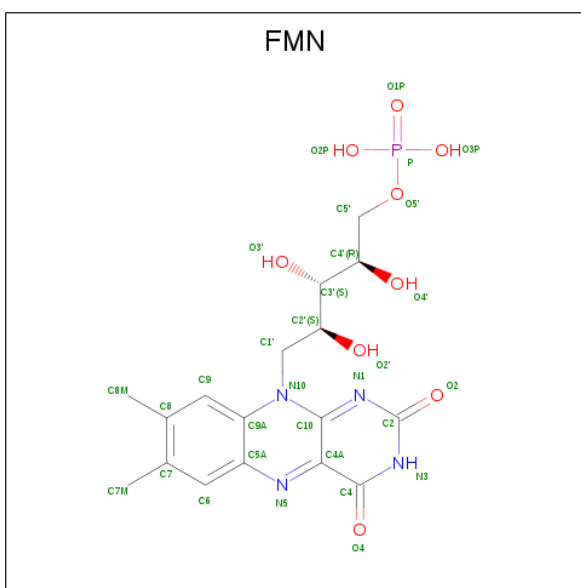
Chain	Residue	Modelled	Actual	Comment	Reference
A	24	CYS	SER	CONFLICT	GB 81295307
B	24	CYS	SER	CONFLICT	GB 81295307

- Molecule 2 is COBALT HEXAMMINE(III) (three-letter code: NCO) (formula: $\text{CoH}_{18}\text{N}_6$).



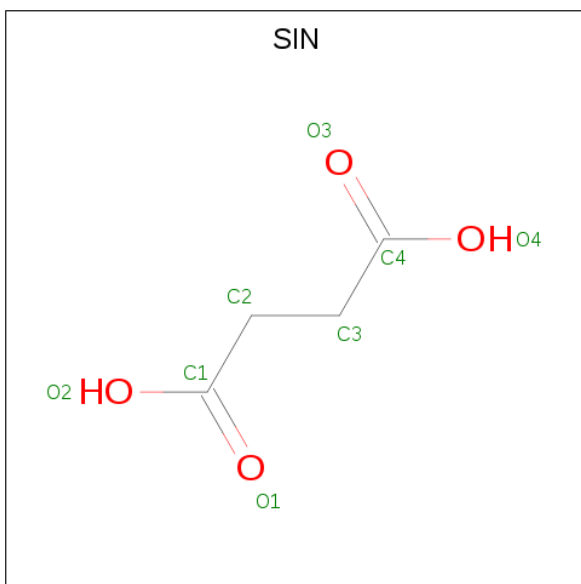
Mol	Chain	Residues	Atoms			ZeroOcc	AltConf
2	A	1	Total	Co	N	0	0
			7	1	6		

- Molecule 3 is FLAVIN MONONUCLEOTIDE (three-letter code: FMN) (formula: $C_{17}H_{21}N_4O_9P$).



Mol	Chain	Residues	Atoms					ZeroOcc	AltConf
3	A	1	Total	C	N	O	P	0	0
			31	17	4	9	1		
3	B	1	Total	C	N	O	P	0	0
			31	17	4	9	1		

- Molecule 4 is SUCCINIC ACID (three-letter code: SIN) (formula: $C_4H_6O_4$).



Mol	Chain	Residues	Atoms			ZeroOcc	AltConf
4	A	1	Total	C	O	0	0
			8	4	4		

Continued on next page...

Continued from previous page...

Mol	Chain	Residues	Atoms			ZeroOcc	AltConf
4	B	1	Total	C	O	0	0
			8	4	4		

- Molecule 5 is GLYCEROL (three-letter code: GOL) (formula: $C_3H_8O_3$).



Mol	Chain	Residues	Atoms			ZeroOcc	AltConf
5	A	1	Total	C	O	0	0
			6	3	3		
5	A	1	Total	C	O	0	0
			6	3	3		
5	A	1	Total	C	O	0	0
			6	3	3		
5	A	1	Total	C	O	0	0
			6	3	3		
5	B	1	Total	C	O	0	0
			6	3	3		

- Molecule 6 is water.

Mol	Chain	Residues	Atoms		ZeroOcc	AltConf
6	A	352	Total	O	0	0
			352	352		
6	B	343	Total	O	0	0
			343	343		

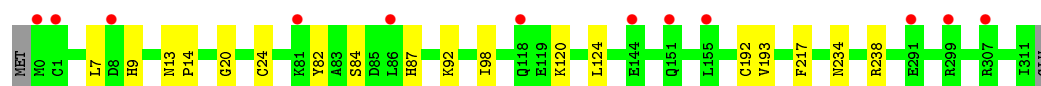
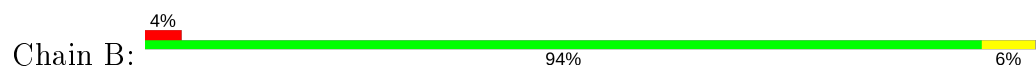
3 Residue-property plots [i](#)

These plots are drawn for all protein, RNA and DNA chains in the entry. The first graphic for a chain summarises the proportions of the various outlier classes displayed in the second graphic. The second graphic shows the sequence view annotated by issues in geometry and electron density. Residues are color-coded according to the number of geometric quality criteria for which they contain at least one outlier: green = 0, yellow = 1, orange = 2 and red = 3 or more. A red dot above a residue indicates a poor fit to the electron density ($\text{RSRZ} > 2$). Stretches of 2 or more consecutive residues without any outlier are shown as a green connector. Residues present in the sample, but not in the model, are shown in grey.

- Molecule 1: dihydroorotate dehydrogenase



- Molecule 1: dihydroorotate dehydrogenase



4 Data and refinement statistics

Property	Value	Source
Space group	P 21 21 21	Depositor
Cell constants a, b, c, α , β , γ	68.15Å 71.77Å 123.40Å 90.00° 90.00° 90.00°	Depositor
Resolution (Å)	50.00 – 1.38 45.88 – 1.38	Depositor EDS
% Data completeness (in resolution range)	95.5 (50.00-1.38) 95.5 (45.88-1.38)	Depositor EDS
R_{merge}	0.06	Depositor
R_{sym}	(Not available)	Depositor
$\langle I/\sigma(I) \rangle$ ¹	1.62 (at 1.38Å)	Xtriage
Refinement program	REFMAC 5.2.0005	Depositor
R, R_{free}	0.165 , 0.183 0.164 , 0.182	Depositor DCC
R_{free} test set	5980 reflections (5.03%)	wwPDB-VP
Wilson B-factor (Å ²)	10.1	Xtriage
Anisotropy	0.221	Xtriage
Bulk solvent k_{sol} (e/Å ³), B_{sol} (Å ²)	0.36 , 41.3	EDS
L-test for twinning ²	$\langle L \rangle = 0.50$, $\langle L^2 \rangle = 0.33$	Xtriage
Estimated twinning fraction	0.000 for k,h,-l	Xtriage
F_o, F_c correlation	0.95	EDS
Total number of atoms	5568	wwPDB-VP
Average B, all atoms (Å ²)	12.0	wwPDB-VP

Xtriage's analysis on translational NCS is as follows: *The analyses of the Patterson function reveals a significant off-origin peak that is 65.70 % of the origin peak, indicating pseudo-translational symmetry. The chance of finding a peak of this or larger height randomly in a structure without pseudo-translational symmetry is equal to 6.7938e-06. The detected translational NCS is most likely also responsible for the elevated intensity ratio.*

¹ Intensities estimated from amplitudes.

² Theoretical values of $\langle |L| \rangle$, $\langle L^2 \rangle$ for acentric reflections are 0.5, 0.333 respectively for untwinned datasets, and 0.375, 0.2 for perfectly twinned datasets.

5 Model quality [i](#)

5.1 Standard geometry [i](#)

Bond lengths and bond angles in the following residue types are not validated in this section: FMN, GOL, SIN, NCO

The Z score for a bond length (or angle) is the number of standard deviations the observed value is removed from the expected value. A bond length (or angle) with $|Z| > 5$ is considered an outlier worth inspection. RMSZ is the root-mean-square of all Z scores of the bond lengths (or angles).

Mol	Chain	Bond lengths		Bond angles	
		RMSZ	$\# Z > 5$	RMSZ	$\# Z > 5$
1	A	0.40	1/2431 (0.0%)	0.56	0/3293
1	B	0.39	1/2431 (0.0%)	0.55	0/3293
All	All	0.40	2/4862 (0.0%)	0.56	0/6586

All (2) bond length outliers are listed below:

Mol	Chain	Res	Type	Atoms	Z	Observed(Å)	Ideal(Å)
1	A	24	CYS	CB-SG	-7.87	1.68	1.82
1	B	24	CYS	CB-SG	-7.31	1.69	1.82

There are no bond angle outliers.

There are no chirality outliers.

There are no planarity outliers.

5.2 Too-close contacts [i](#)

In the following table, the Non-H and H(model) columns list the number of non-hydrogen atoms and hydrogen atoms in the chain respectively. The H(added) column lists the number of hydrogen atoms added and optimized by MolProbity. The Clashes column lists the number of clashes within the asymmetric unit, whereas Symm-Clashes lists symmetry related clashes.

Mol	Chain	Non-H	H(model)	H(added)	Clashes	Symm-Clashes
1	A	2379	0	2385	10	0
1	B	2379	0	2385	12	0
2	A	7	0	0	0	0
3	A	31	0	19	2	0
3	B	31	0	19	1	0
4	A	8	0	4	1	0
4	B	8	0	4	0	0

Continued on next page...

Continued from previous page...

Mol	Chain	Non-H	H(model)	H(added)	Clashes	Symm-Clashes
5	A	24	0	32	2	0
5	B	6	0	8	1	0
6	A	352	0	0	1	0
6	B	343	0	0	2	0
All	All	5568	0	4856	24	0

The all-atom clashscore is defined as the number of clashes found per 1000 atoms (including hydrogen atoms). The all-atom clashscore for this structure is 2.

All (24) close contacts within the same asymmetric unit are listed below, sorted by their clash magnitude.

Atom-1	Atom-2	Interatomic distance (Å)	Clash overlap (Å)
1:A:234:ASN:HD21	1:A:238:ARG:HE	1.29	0.80
1:B:234:ASN:HD21	1:B:238:ARG:HE	1.32	0.74
1:B:234:ASN:ND2	1:B:238:ARG:HE	2.00	0.59
1:B:20:GLY:HA3	3:B:2350:FMN:N5	2.20	0.57
1:A:234:ASN:ND2	1:A:238:ARG:HE	1.99	0.56
1:B:82:TYR:OH	1:B:87:HIS:HD2	1.89	0.55
1:B:9:HIS:HE1	6:B:2425:HOH:O	1.90	0.55
1:A:82:TYR:OH	1:A:87:HIS:HD2	1.89	0.55
1:A:20:GLY:HA3	3:A:1350:FMN:N5	2.21	0.55
1:A:9:HIS:HE1	6:A:1422:HOH:O	1.92	0.52
1:A:87:HIS:HE1	1:A:92:LYS:O	1.93	0.51
1:B:7:LEU:O	1:B:9:HIS:HD2	1.95	0.49
1:B:87:HIS:HE1	1:B:92:LYS:O	1.96	0.47
1:A:5:ASN:OD1	1:A:10:VAL:HG22	2.14	0.47
5:A:1362:GOL:H31	1:B:217:PHE:CE1	2.50	0.46
1:A:217:PHE:CE1	5:A:1363:GOL:H31	2.53	0.44
1:A:7:LEU:O	1:A:9:HIS:HD2	2.02	0.43
1:B:84:SER:O	1:B:120:LYS:HE2	2.18	0.43
1:B:192:CYS:HA	1:B:193:VAL:HA	1.87	0.42
5:B:1365:GOL:H11	6:B:2418:HOH:O	2.19	0.42
1:B:13:ASN:HB2	1:B:14:PRO:HD2	2.02	0.41
3:A:1350:FMN:N5	4:A:1370:SIN:H31	2.36	0.41
1:A:192:CYS:HA	1:A:193:VAL:HA	1.85	0.41
1:B:98:ILE:HG12	1:B:124:LEU:HD11	2.03	0.41

There are no symmetry-related clashes.

5.3 Torsion angles

5.3.1 Protein backbone

In the following table, the Percentiles column shows the percent Ramachandran outliers of the chain as a percentile score with respect to all X-ray entries followed by that with respect to entries of similar resolution.

The Analysed column shows the number of residues for which the backbone conformation was analysed, and the total number of residues.

Mol	Chain	Analysed	Favoured	Allowed	Outliers	Percentiles	
1	A	310/314 (99%)	302 (97%)	8 (3%)	0	100	100
1	B	310/314 (99%)	302 (97%)	8 (3%)	0	100	100
All	All	620/628 (99%)	604 (97%)	16 (3%)	0	100	100

There are no Ramachandran outliers to report.

5.3.2 Protein sidechains

In the following table, the Percentiles column shows the percent sidechain outliers of the chain as a percentile score with respect to all X-ray entries followed by that with respect to entries of similar resolution.

The Analysed column shows the number of residues for which the sidechain conformation was analysed, and the total number of residues.

Mol	Chain	Analysed	Rotameric	Outliers	Percentiles	
1	A	257/259 (99%)	257 (100%)	0	100	100
1	B	257/259 (99%)	257 (100%)	0	100	100
All	All	514/518 (99%)	514 (100%)	0	100	100

There are no protein residues with a non-rotameric sidechain to report.

Some sidechains can be flipped to improve hydrogen bonding and reduce clashes. All (11) such sidechains are listed below:

Mol	Chain	Res	Type
1	A	9	HIS
1	A	87	HIS
1	A	151	GLN
1	A	152	GLN
1	A	234	ASN
1	A	275	GLN

Continued on next page...

Continued from previous page...

Mol	Chain	Res	Type
1	B	9	HIS
1	B	87	HIS
1	B	152	GLN
1	B	234	ASN
1	B	275	GLN

5.3.3 RNA ⓘ

There are no RNA molecules in this entry.

5.4 Non-standard residues in protein, DNA, RNA chains ⓘ

There are no non-standard protein/DNA/RNA residues in this entry.

5.5 Carbohydrates ⓘ

There are no carbohydrates in this entry.

5.6 Ligand geometry ⓘ

10 ligands are modelled in this entry.

In the following table, the Counts columns list the number of bonds (or angles) for which Mogul statistics could be retrieved, the number of bonds (or angles) that are observed in the model and the number of bonds (or angles) that are defined in the Chemical Component Dictionary. The Link column lists molecule types, if any, to which the group is linked. The Z score for a bond length (or angle) is the number of standard deviations the observed value is removed from the expected value. A bond length (or angle) with $|Z| > 2$ is considered an outlier worth inspection. RMSZ is the root-mean-square of all Z scores of the bond lengths (or angles).

Mol	Type	Chain	Res	Link	Bond lengths			Bond angles		
					Counts	RMSZ	$\# Z > 2$	Counts	RMSZ	$\# Z > 2$
3	FMN	A	1350	-	31,33,33	1.33	4 (12%)	40,50,50	1.91	5 (12%)
5	GOL	A	1362	-	5,5,5	0.29	0	5,5,5	0.37	0
3	FMN	B	2350	-	31,33,33	1.36	4 (12%)	40,50,50	1.83	5 (12%)
5	GOL	A	1361	-	5,5,5	0.30	0	5,5,5	0.19	0
5	GOL	B	1365	-	5,5,5	0.32	0	5,5,5	0.28	0
4	SIN	A	1370	-	1,7,7	0.36	0	2,8,8	4.14	2 (100%)
4	SIN	B	2370	-	1,7,7	0.32	0	2,8,8	3.14	1 (50%)
2	NCO	A	1351	-	6,6,6	0.99	0	-		

Mol	Type	Chain	Res	Link	Bond lengths			Bond angles		
					Counts	RMSZ	# Z > 2	Counts	RMSZ	# Z > 2
5	GOL	A	1363	-	5,5,5	0.23	0	5,5,5	0.44	0
5	GOL	A	1364	-	5,5,5	0.39	0	5,5,5	0.46	0

In the following table, the Chirals column lists the number of chiral outliers, the number of chiral centers analysed, the number of these observed in the model and the number defined in the Chemical Component Dictionary. Similar counts are reported in the Torsion and Rings columns. '-' means no outliers of that kind were identified.

Mol	Type	Chain	Res	Link	Chirals	Torsions	Rings
3	FMN	A	1350	-	-	1/18/18/18	0/3/3/3
5	GOL	A	1362	-	-	0/4/4/4	-
3	FMN	B	2350	-	-	1/18/18/18	0/3/3/3
5	GOL	A	1361	-	-	0/4/4/4	-
5	GOL	B	1365	-	-	2/4/4/4	-
4	SIN	A	1370	-	-	0/1/5/5	-
4	SIN	B	2370	-	-	0/1/5/5	-
5	GOL	A	1363	-	-	0/4/4/4	-
5	GOL	A	1364	-	-	2/4/4/4	-

All (8) bond length outliers are listed below:

Mol	Chain	Res	Type	Atoms	Z	Observed(Å)	Ideal(Å)
3	A	1350	FMN	C10-N1	3.72	1.38	1.33
3	B	2350	FMN	C4A-N5	3.68	1.38	1.33
3	B	2350	FMN	C10-N1	3.66	1.38	1.33
3	A	1350	FMN	C4A-N5	3.37	1.38	1.33
3	B	2350	FMN	C4-N3	3.07	1.38	1.33
3	A	1350	FMN	C4-N3	2.88	1.38	1.33
3	B	2350	FMN	C5A-N5	2.31	1.39	1.35
3	A	1350	FMN	C5A-N5	2.08	1.38	1.35

All (13) bond angle outliers are listed below:

Mol	Chain	Res	Type	Atoms	Z	Observed(°)	Ideal(°)
3	A	1350	FMN	C4-N3-C2	8.72	122.50	115.14
3	B	2350	FMN	C4-N3-C2	7.54	121.51	115.14
4	A	1370	SIN	C2-C3-C4	-5.45	103.53	112.67
3	B	2350	FMN	C1'-N10-C9A	4.70	121.99	118.29
4	B	2370	SIN	C2-C3-C4	-4.31	105.44	112.67
3	A	1350	FMN	C1'-N10-C9A	4.29	121.67	118.29
3	A	1350	FMN	C4A-C4-N3	-4.28	117.58	123.43
3	B	2350	FMN	C4A-C4-N3	-3.68	118.40	123.43

Continued on next page...

Continued from previous page...

Mol	Chain	Res	Type	Atoms	Z	Observed(°)	Ideal(°)
3	B	2350	FMN	C4A-N5-C5A	3.08	119.85	116.77
3	A	1350	FMN	C5A-C9A-N10	3.00	119.89	117.72
3	B	2350	FMN	C5A-C9A-N10	2.96	119.86	117.72
3	A	1350	FMN	C4A-N5-C5A	2.56	119.33	116.77
4	A	1370	SIN	C3-C2-C1	2.14	116.27	112.67

There are no chirality outliers.

All (6) torsion outliers are listed below:

Mol	Chain	Res	Type	Atoms
5	B	1365	GOL	C1-C2-C3-O3
5	A	1364	GOL	C1-C2-C3-O3
5	A	1364	GOL	O2-C2-C3-O3
5	B	1365	GOL	O2-C2-C3-O3
3	A	1350	FMN	C4'-C5'-O5'-P
3	B	2350	FMN	C4'-C5'-O5'-P

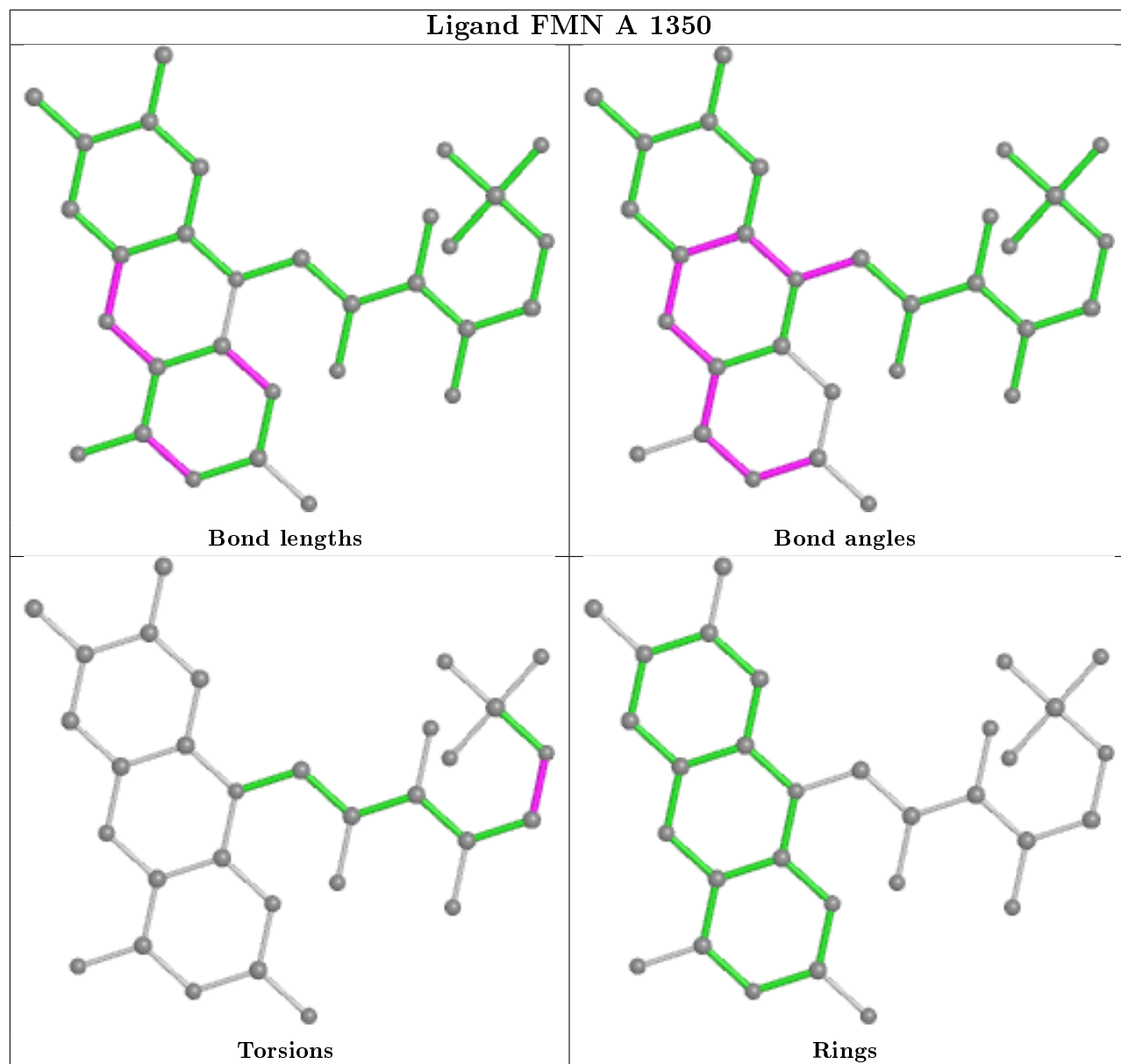
There are no ring outliers.

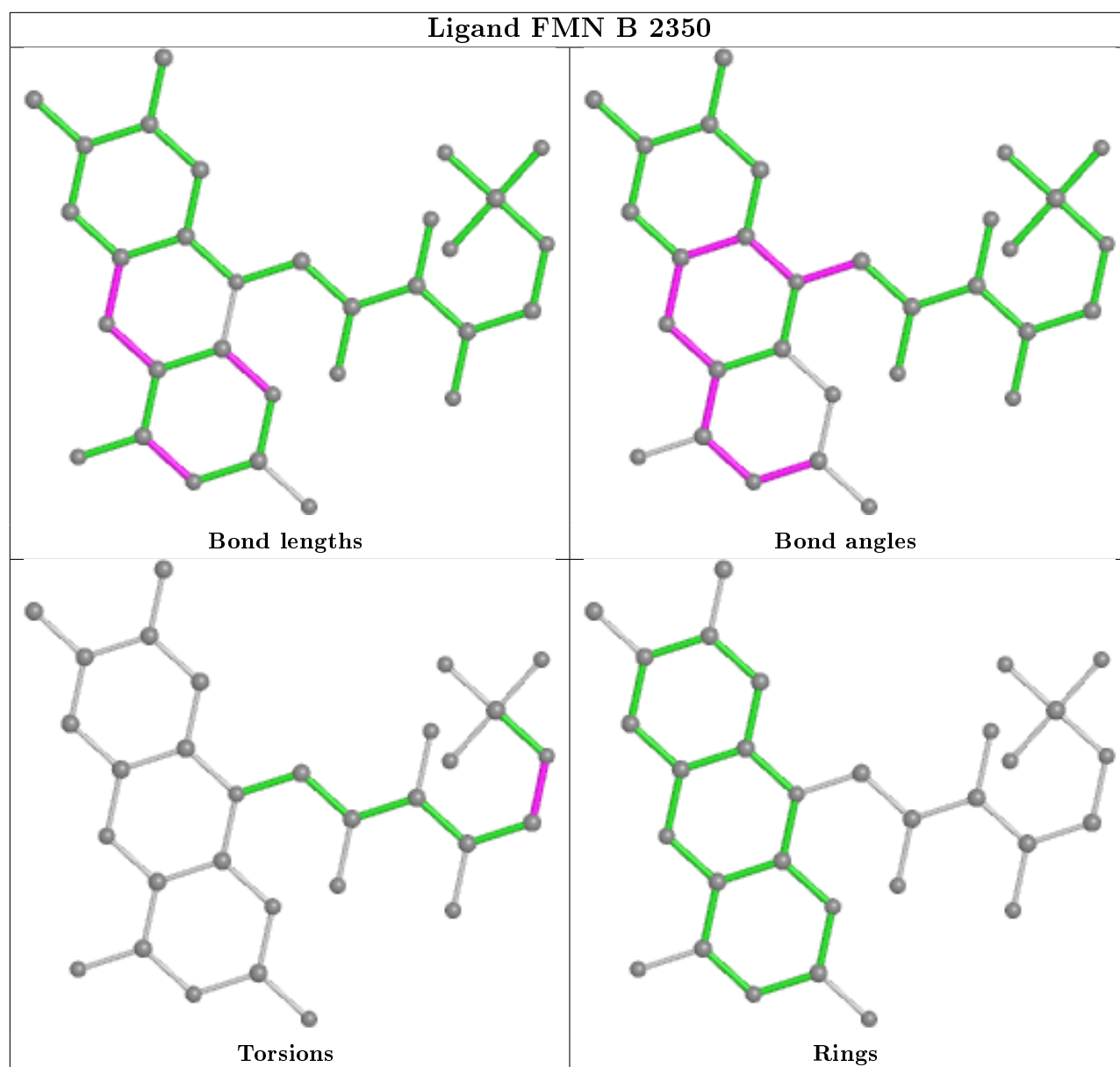
6 monomers are involved in 6 short contacts:

Mol	Chain	Res	Type	Clashes	Symm-Clashes
3	A	1350	FMN	2	0
5	A	1362	GOL	1	0
3	B	2350	FMN	1	0
5	B	1365	GOL	1	0
4	A	1370	SIN	1	0
5	A	1363	GOL	1	0

The following is a two-dimensional graphical depiction of Mogul quality analysis of bond lengths, bond angles, torsion angles, and ring geometry for all instances of the Ligand of Interest. In addition, ligands with molecular weight > 250 and outliers as shown on the validation Tables will also be included. For torsion angles, if less than 5% of the Mogul distribution of torsion angles is within 10 degrees of the torsion angle in question, then that torsion angle is considered an outlier. Any bond that is central to one or more torsion angles identified as an outlier by Mogul will be highlighted in the graph. For rings, the root-mean-square deviation (RMSD) between the ring in question and similar rings identified by Mogul is calculated over all ring torsion angles. If the average RMSD is greater than 60 degrees and the minimal RMSD between the ring in question and any Mogul-identified rings is also greater than 60 degrees, then that ring is considered an outlier. The outliers are highlighted in purple. The color gray indicates Mogul did not find sufficient equivalents in the CSD to analyse the geometry.

Ligand FMN A 1350





5.7 Other polymers [i](#)

There are no such residues in this entry.

5.8 Polymer linkage issues [i](#)

There are no chain breaks in this entry.

6 Fit of model and data

6.1 Protein, DNA and RNA chains

In the following table, the column labelled ‘#RSRZ> 2’ contains the number (and percentage) of RSRZ outliers, followed by percent RSRZ outliers for the chain as percentile scores relative to all X-ray entries and entries of similar resolution. The OWAB column contains the minimum, median, 95th percentile and maximum values of the occupancy-weighted average B-factor per residue. The column labelled ‘Q< 0.9’ lists the number of (and percentage) of residues with an average occupancy less than 0.9.

Mol	Chain	Analysed	<RSRZ>	#RSRZ>2	OWAB(Å ²)	Q<0.9
1	A	312/314 (99%)	0.20	11 (3%) 44 45	7, 10, 16, 26	0
1	B	312/314 (99%)	0.22	12 (3%) 40 42	7, 10, 16, 24	0
All	All	624/628 (99%)	0.21	23 (3%) 41 44	7, 10, 16, 26	0

All (23) RSRZ outliers are listed below:

Mol	Chain	Res	Type	RSRZ
1	B	0	MET	6.5
1	A	1	CYS	5.6
1	A	0	MET	4.1
1	A	24	CYS	3.8
1	A	8	ASP	3.5
1	B	118	GLN	3.0
1	B	8	ASP	2.8
1	A	307	ARG	2.7
1	A	5	ASN	2.7
1	B	155	LEU	2.6
1	B	1	CYS	2.6
1	A	144	GLU	2.6
1	B	307	ARG	2.5
1	B	299	ARG	2.4
1	B	86	LEU	2.4
1	A	246	PHE	2.4
1	A	2	LEU	2.3
1	B	151	GLN	2.3
1	B	81	LYS	2.3
1	B	144	GLU	2.2
1	B	291	GLU	2.1
1	A	146	MET	2.1
1	A	291	GLU	2.0

6.2 Non-standard residues in protein, DNA, RNA chains ⓘ

There are no non-standard protein/DNA/RNA residues in this entry.

6.3 Carbohydrates ⓘ

There are no carbohydrates in this entry.

6.4 Ligands ⓘ

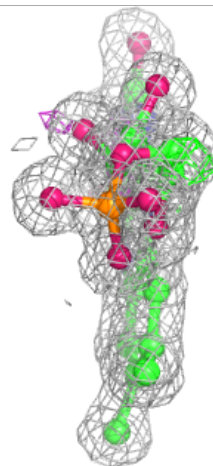
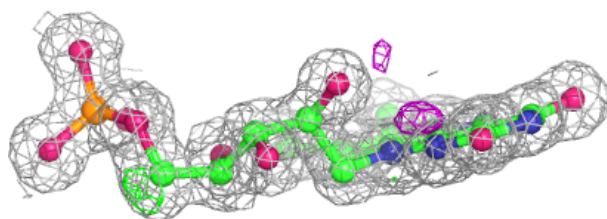
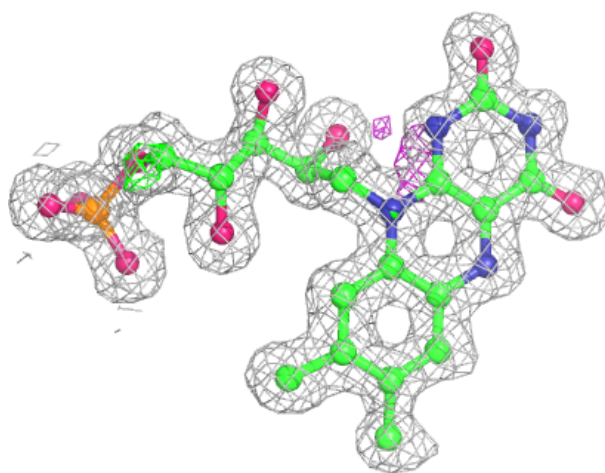
In the following table, the Atoms column lists the number of modelled atoms in the group and the number defined in the chemical component dictionary. The B-factors column lists the minimum, median, 95th percentile and maximum values of B factors of atoms in the group. The column labelled 'Q< 0.9' lists the number of atoms with occupancy less than 0.9.

Mol	Type	Chain	Res	Atoms	RSCC	RSR	B-factors(\AA^2)	Q<0.9
5	GOL	A	1364	6/6	0.83	0.21	18,21,22,22	0
5	GOL	B	1365	6/6	0.86	0.31	16,23,24,25	0
5	GOL	A	1362	6/6	0.88	0.13	16,19,19,19	0
5	GOL	A	1361	6/6	0.91	0.08	16,17,19,19	0
5	GOL	A	1363	6/6	0.95	0.08	12,14,15,15	0
4	SIN	B	2370	8/8	0.96	0.08	10,11,14,14	0
3	FMN	B	2350	31/31	0.96	0.08	6,7,8,9	0
4	SIN	A	1370	8/8	0.96	0.09	8,10,13,14	0
3	FMN	A	1350	31/31	0.97	0.07	5,7,7,9	0
2	NCO	A	1351	7/7	0.99	0.08	9,9,10,10	0

The following is a graphical depiction of the model fit to experimental electron density of all instances of the Ligand of Interest. In addition, ligands with molecular weight > 250 and outliers as shown on the geometry validation Tables will also be included. Each fit is shown from different orientation to approximate a three-dimensional view.

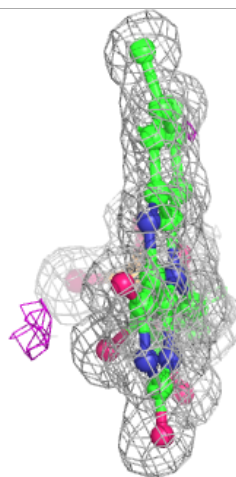
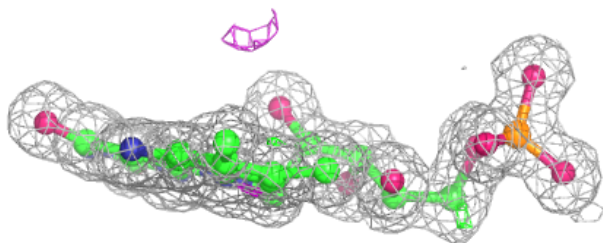
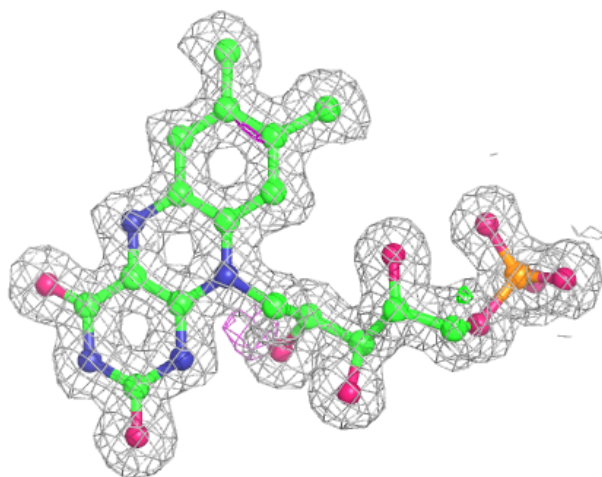
Electron density around FMN B 2350:

$2mF_o-DF_c$ (at 0.7 rmsd) in gray
 mF_o-DF_c (at 3 rmsd) in purple (negative)
and green (positive)



Electron density around FMN A 1350:

$2mF_o-DF_c$ (at 0.7 rmsd) in gray
 mF_o-DF_c (at 3 rmsd) in purple (negative)
and green (positive)



6.5 Other polymers [i](#)

There are no such residues in this entry.