



Full wwPDB X-ray Structure Validation Report ⓘ

May 25, 2020 – 09:51 am BST

PDB ID : 5DJ3
Title : Structure of the PLP-Dependent L-Arginine Hydroxylase MppP with D-Arginine Bound
Authors : Silvaggi, N.R.; Han, L.
Deposited on : 2015-09-01
Resolution : 2.23 Å(reported)

This is a Full wwPDB X-ray Structure Validation Report for a publicly released PDB entry.

We welcome your comments at validation@mail.wwpdb.org

A user guide is available at

<https://www.wwpdb.org/validation/2017/XrayValidationReportHelp>

with specific help available everywhere you see the ⓘ symbol.

The following versions of software and data (see [references ⓘ](#)) were used in the production of this report:

MolProbity : 4.02b-467
Mogul : 1.8.5 (274361), CSD as541be (2020)
Xtriage (Phenix) : 1.13
EDS : 2.11
buster-report : 1.1.7 (2018)
Percentile statistics : 20191225.v01 (using entries in the PDB archive December 25th 2019)
Refmac : 5.8.0158
CCP4 : 7.0.044 (Gargrove)
Ideal geometry (proteins) : Engh & Huber (2001)
Ideal geometry (DNA, RNA) : Parkinson et al. (1996)
Validation Pipeline (wwPDB-VP) : 2.11

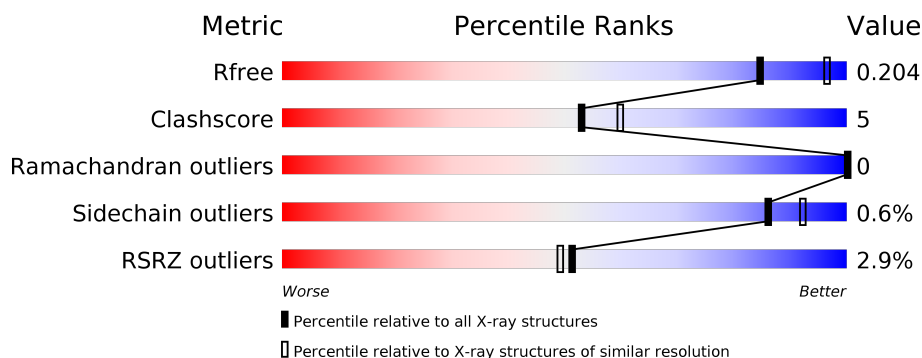
1 Overall quality at a glance

The following experimental techniques were used to determine the structure:

X-RAY DIFFRACTION

The reported resolution of this entry is 2.23 Å.

Percentile scores (ranging between 0-100) for global validation metrics of the entry are shown in the following graphic. The table shows the number of entries on which the scores are based.



Metric	Whole archive (#Entries)	Similar resolution (#Entries, resolution range(Å))
R_{free}	130704	5912 (2.24-2.20)
Clashscore	141614	6646 (2.24-2.20)
Ramachandran outliers	138981	6543 (2.24-2.20)
Sidechain outliers	138945	6544 (2.24-2.20)
RSRZ outliers	127900	5797 (2.24-2.20)

The table below summarises the geometric issues observed across the polymeric chains and their fit to the electron density. The red, orange, yellow and green segments on the lower bar indicate the fraction of residues that contain outliers for ≥ 3 , 2, 1 and 0 types of geometric quality criteria respectively. A grey segment represents the fraction of residues that are not modelled. The numeric value for each fraction is indicated below the corresponding segment, with a dot representing fractions $\leq 5\%$. The upper red bar (where present) indicates the fraction of residues that have poor fit to the electron density. The numeric value is given above the bar.

Mol	Chain	Length	Quality of chain
1	A	376	<div> <div>4%</div> <div> <div></div> <div>86%</div> <div>7%</div> <div>7%</div> </div> </div>
1	B	376	<div> <div>3%</div> <div> <div></div> <div>87%</div> <div>6%</div> <div>7%</div> </div> </div>
1	C	376	<div> <div>3%</div> <div> <div></div> <div>85%</div> <div>8%</div> <div>7%</div> </div> </div>
1	D	376	<div> <div>2%</div> <div> <div></div> <div>85%</div> <div>9%</div> <div>7%</div> </div> </div>

2 Entry composition [i](#)

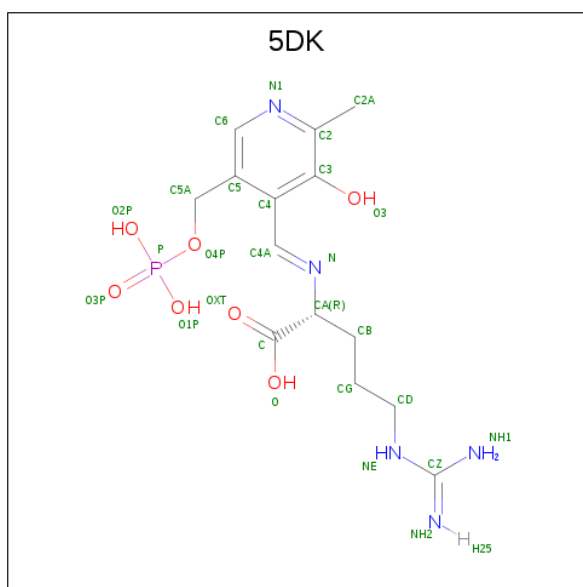
There are 4 unique types of molecules in this entry. The entry contains 22233 atoms, of which 10584 are hydrogens and 0 are deuteriums.

In the tables below, the ZeroOcc column contains the number of atoms modelled with zero occupancy, the AltConf column contains the number of residues with at least one atom in alternate conformation and the Trace column contains the number of residues modelled with at most 2 atoms.

- Molecule 1 is a protein called PLP-Dependent L-Arginine Hydroxylase MppP.

Mol	Chain	Residues	Atoms						ZeroOcc	AltConf	Trace
1	A	351	Total	C	H	N	O	S	0	0	0
			5360	1709	2646	484	514	7			
1	B	351	Total	C	H	N	O	S	0	0	0
			5360	1709	2646	484	514	7			
1	C	351	Total	C	H	N	O	S	0	0	0
			5360	1709	2646	484	514	7			
1	D	351	Total	C	H	N	O	S	0	0	0
			5360	1709	2646	484	514	7			

- Molecule 2 is (E)-N 2 -({3-hydroxy-2-methyl-5-[(phosphonoxy)methyl]pyridin-4-yl}methylidene)-D-arginine (three-letter code: 5DK) (formula: C₁₄H₂₂N₅O₇P).



Mol	Chain	Residues	Atoms					ZeroOcc	AltConf
2	A	1	Total	C	N	O	P	0	0
			27	14	5	7	1		
2	B	1	Total	C	N	O	P	0	0
			27	14	5	7	1		

Continued on next page...

Continued from previous page...

Mol	Chain	Residues	Atoms					ZeroOcc	AltConf
2	C	1	Total	C	N	O	P	0	0
			27	14	5	7	1		
2	D	1	Total	C	N	O	P	0	0
			27	14	5	7	1		

- Molecule 3 is MAGNESIUM ION (three-letter code: MG) (formula: Mg).

Mol	Chain	Residues	Atoms		ZeroOcc	AltConf
3	B	1	Total	Mg	0	0
			1	1		

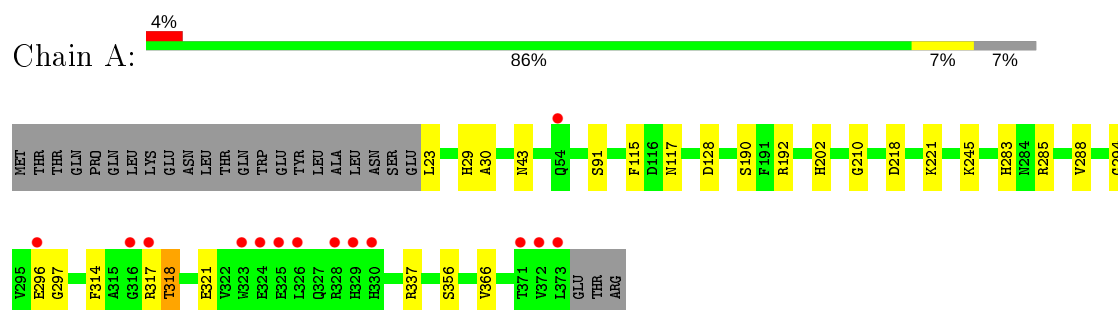
- Molecule 4 is water.

Mol	Chain	Residues	Atoms		ZeroOcc	AltConf
4	A	185	Total	O	0	0
			185	185		
4	B	164	Total	O	0	0
			164	164		
4	C	160	Total	O	0	0
			160	160		
4	D	175	Total	O	0	0
			175	175		

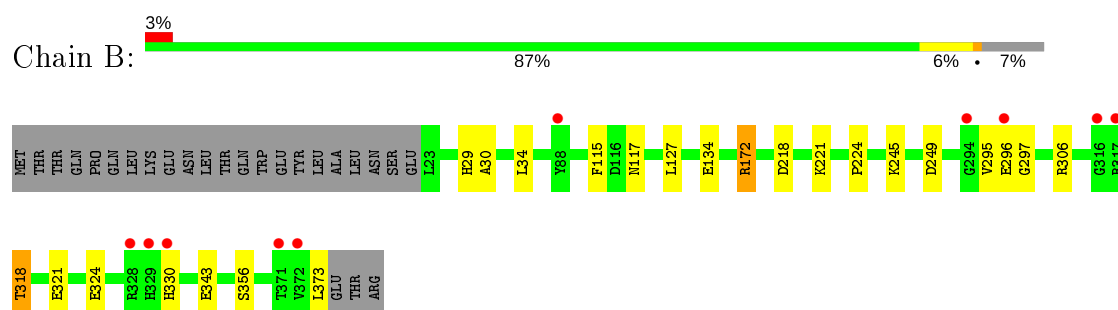
3 Residue-property plots [i](#)

These plots are drawn for all protein, RNA and DNA chains in the entry. The first graphic for a chain summarises the proportions of the various outlier classes displayed in the second graphic. The second graphic shows the sequence view annotated by issues in geometry and electron density. Residues are color-coded according to the number of geometric quality criteria for which they contain at least one outlier: green = 0, yellow = 1, orange = 2 and red = 3 or more. A red dot above a residue indicates a poor fit to the electron density ($RSRZ > 2$). Stretches of 2 or more consecutive residues without any outlier are shown as a green connector. Residues present in the sample, but not in the model, are shown in grey.

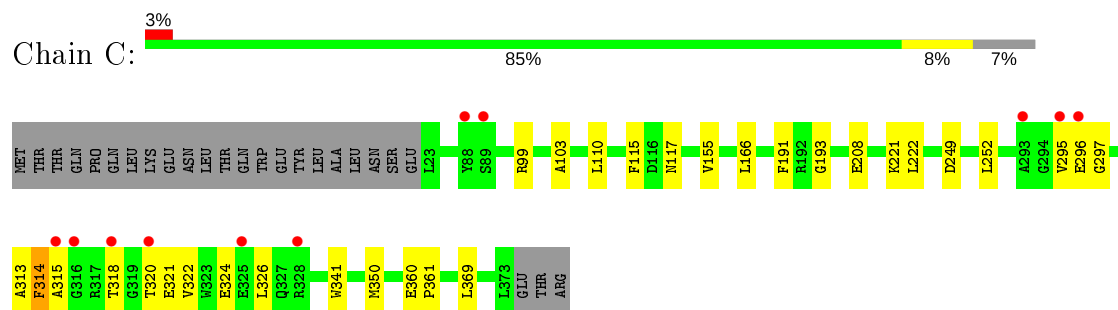
• Molecule 1: PLP-Dependent L-Arginine Hydroxylase MppP



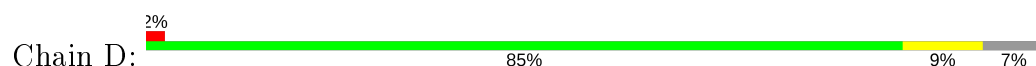
• Molecule 1: PLP-Dependent L-Arginine Hydroxylase MppP

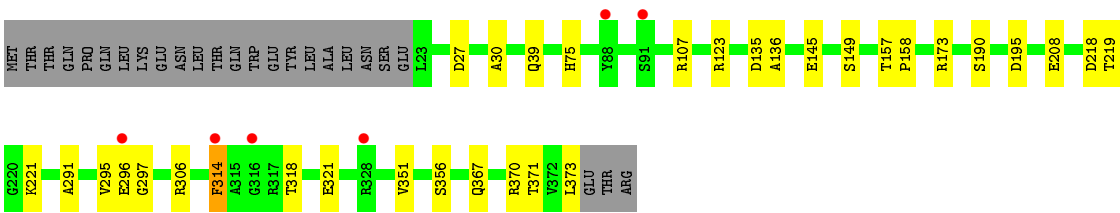


• Molecule 1: PLP-Dependent L-Arginine Hydroxylase MppP



• Molecule 1: PLP-Dependent L-Arginine Hydroxylase MppP





4 Data and refinement statistics

Property	Value	Source
Space group	P 21 21 21	Depositor
Cell constants a, b, c, α , β , γ	85.72Å 108.28Å 195.41Å 90.00° 90.00° 90.00°	Depositor
Resolution (Å)	44.53 – 2.23 44.53 – 2.23	Depositor EDS
% Data completeness (in resolution range)	89.1 (44.53-2.23) 89.0 (44.53-2.23)	Depositor EDS
R_{merge}	0.11	Depositor
R_{sym}	(Not available)	Depositor
$\langle I/\sigma(I) \rangle$ ¹	1.62 (at 2.22Å)	Xtriage
Refinement program	PHENIX (1.10_2148: ???)	Depositor
R, R_{free}	0.162 , 0.199 0.166 , 0.204	Depositor DCC
R_{free} test set	3000 reflections (3.76%)	wwPDB-VP
Wilson B-factor (Å ²)	27.1	Xtriage
Anisotropy	0.138	Xtriage
Bulk solvent k_{sol} (e/Å ³), B_{sol} (Å ²)	0.43 , 51.6	EDS
L-test for twinning ²	$\langle L \rangle = 0.50$, $\langle L^2 \rangle = 0.33$	Xtriage
Estimated twinning fraction	No twinning to report.	Xtriage
F_o, F_c correlation	0.96	EDS
Total number of atoms	22233	wwPDB-VP
Average B, all atoms (Å ²)	37.0	wwPDB-VP

Xtriage's analysis on translational NCS is as follows: *The largest off-origin peak in the Patterson function is 9.32% of the height of the origin peak. No significant pseudotranslation is detected.*

¹Intensities estimated from amplitudes.

²Theoretical values of $\langle |L| \rangle$, $\langle L^2 \rangle$ for acentric reflections are 0.5, 0.333 respectively for untwinned datasets, and 0.375, 0.2 for perfectly twinned datasets.

5 Model quality [i](#)

5.1 Standard geometry [i](#)

Bond lengths and bond angles in the following residue types are not validated in this section: 5DK, MG

The Z score for a bond length (or angle) is the number of standard deviations the observed value is removed from the expected value. A bond length (or angle) with $|Z| > 5$ is considered an outlier worth inspection. RMSZ is the root-mean-square of all Z scores of the bond lengths (or angles).

Mol	Chain	Bond lengths		Bond angles	
		RMSZ	# Z >5	RMSZ	# Z >5
1	A	0.56	0/2772	0.66	1/3774 (0.0%)
1	B	0.53	0/2772	0.67	1/3774 (0.0%)
1	C	0.54	0/2772	0.66	0/3774
1	D	0.58	0/2772	0.69	0/3774
All	All	0.55	0/11088	0.67	2/15096 (0.0%)

There are no bond length outliers.

All (2) bond angle outliers are listed below:

Mol	Chain	Res	Type	Atoms	Z	Observed(°)	Ideal(°)
1	B	172	ARG	NE-CZ-NH2	-5.04	117.78	120.30
1	A	285	ARG	NE-CZ-NH1	5.01	122.80	120.30

There are no chirality outliers.

There are no planarity outliers.

5.2 Too-close contacts [i](#)

In the following table, the Non-H and H(model) columns list the number of non-hydrogen atoms and hydrogen atoms in the chain respectively. The H(added) column lists the number of hydrogen atoms added and optimized by MolProbity. The Clashes column lists the number of clashes within the asymmetric unit, whereas Symm-Clashes lists symmetry related clashes.

Mol	Chain	Non-H	H(model)	H(added)	Clashes	Symm-Clashes
1	A	2714	2646	2673	28	0
1	B	2714	2646	2673	28	0
1	C	2714	2646	2673	26	0
1	D	2714	2646	2673	30	0
2	A	27	0	20	5	0

Continued on next page...

Continued from previous page...

Mol	Chain	Non-H	H(model)	H(added)	Clashes	Symm-Clashes
2	B	27	0	20	4	0
2	C	27	0	18	2	0
2	D	27	0	20	4	0
3	B	1	0	0	0	0
4	A	185	0	0	14	2
4	B	164	0	0	12	2
4	C	160	0	0	3	0
4	D	175	0	0	9	0
All	All	11649	10584	10770	118	2

The all-atom clashscore is defined as the number of clashes found per 1000 atoms (including hydrogen atoms). The all-atom clashscore for this structure is 5.

All (118) close contacts within the same asymmetric unit are listed below, sorted by their clash magnitude.

Atom-1	Atom-2	Interatomic distance (Å)	Clash overlap (Å)
1:B:373:LEU:O	4:B:501:HOH:O	1.89	0.90
1:D:107:ARG:NH1	4:D:602:HOH:O	2.06	0.89
1:B:330:HIS:ND1	4:B:504:HOH:O	2.09	0.85
2:D:500:5DK:H18	2:D:500:5DK:H12	1.57	0.84
1:D:173:ARG:NE	4:D:604:HOH:O	2.12	0.82
1:A:23:LEU:N	4:A:604:HOH:O	2.13	0.82
1:B:343:GLU:OE2	4:B:502:HOH:O	2.00	0.80
1:A:128:ASP:OD1	4:A:602:HOH:O	2.03	0.76
1:D:296:GLU:CG	1:D:297:GLY:HA3	2.20	0.71
1:C:249:ASP:OD1	4:C:601:HOH:O	2.09	0.71
2:B:401:5DK:O3P	4:B:503:HOH:O	2.09	0.70
1:D:219:THR:O	4:D:603:HOH:O	2.08	0.70
1:D:173:ARG:CD	4:D:604:HOH:O	2.41	0.68
1:C:208:GLU:O	4:C:602:HOH:O	2.12	0.68
1:D:123:ARG:NH1	4:D:607:HOH:O	2.20	0.67
1:B:306:ARG:NH1	4:B:510:HOH:O	2.27	0.67
1:A:283:HIS:ND1	4:A:610:HOH:O	2.27	0.67
1:D:318:THR:HG22	1:D:321:GLU:H	1.61	0.66
1:D:296:GLU:HB3	1:D:297:GLY:CA	2.27	0.65
2:D:500:5DK:H18	2:D:500:5DK:C4A	2.25	0.65
1:A:23:LEU:HA	4:A:604:HOH:O	1.96	0.64
1:C:296:GLU:CG	1:C:297:GLY:HA3	2.27	0.64
1:B:249:ASP:OD1	4:B:505:HOH:O	2.14	0.64
1:D:75:HIS:O	4:D:605:HOH:O	2.15	0.64
1:D:296:GLU:CB	1:D:297:GLY:HA3	2.29	0.63

Continued on next page...

Continued from previous page...

Atom-1	Atom-2	Interatomic distance (Å)	Clash overlap (Å)
2:A:500:5DK:NH1	4:A:605:HOH:O	2.21	0.62
1:A:317:ARG:NE	4:A:611:HOH:O	2.33	0.62
1:C:296:GLU:HB3	1:C:297:GLY:CA	2.33	0.59
1:B:295:VAL:HG12	1:B:296:GLU:HB2	1.85	0.58
1:A:318:THR:HG22	1:A:321:GLU:H	1.69	0.58
1:C:296:GLU:CB	1:C:297:GLY:HA3	2.34	0.57
1:B:296:GLU:HB3	1:B:297:GLY:CA	2.35	0.57
1:A:296:GLU:HB3	1:A:297:GLY:CA	2.34	0.57
1:D:373:LEU:O	4:D:606:HOH:O	2.18	0.56
1:D:295:VAL:HG12	1:D:296:GLU:HB2	1.87	0.55
1:A:210:GLY:HA2	4:A:648:HOH:O	2.05	0.55
1:D:190:SER:OG	1:D:221:LYS:HD2	2.06	0.55
1:A:23:LEU:CA	4:A:604:HOH:O	2.47	0.54
1:A:296:GLU:CB	1:A:297:GLY:HA3	2.37	0.54
1:A:296:GLU:CG	1:A:297:GLY:HA3	2.38	0.53
1:A:91:SER:OG	2:A:500:5DK:H15	2.08	0.53
1:B:296:GLU:CG	1:B:297:GLY:HA3	2.38	0.53
1:B:296:GLU:CB	1:B:297:GLY:HA3	2.37	0.53
1:D:296:GLU:HG2	1:D:297:GLY:HA3	1.90	0.53
1:D:296:GLU:CB	1:D:297:GLY:CA	2.87	0.53
1:C:295:VAL:HG12	1:C:296:GLU:HB2	1.90	0.52
1:A:30:ALA:HA	1:A:356:SER:HB3	1.91	0.52
1:C:103:ALA:O	4:C:603:HOH:O	2.19	0.52
1:D:173:ARG:HD3	4:D:604:HOH:O	2.07	0.52
1:B:134:GLU:OE1	4:B:506:HOH:O	2.19	0.52
1:D:314:PHE:HZ	1:D:351:VAL:HG13	1.75	0.52
1:A:296:GLU:HB3	1:A:297:GLY:HA3	1.93	0.51
1:C:193:GLY:HA3	1:C:222:LEU:HD21	1.91	0.51
1:A:318:THR:HG23	4:A:704:HOH:O	2.10	0.51
1:D:30:ALA:HA	1:D:356:SER:HB3	1.93	0.50
1:B:318:THR:HG22	1:B:321:GLU:H	1.76	0.49
1:C:191:PHE:CZ	1:C:221:LYS:HD3	2.47	0.49
1:C:296:GLU:HG2	1:C:297:GLY:HA3	1.94	0.49
1:D:367:GLN:O	1:D:371:THR:HG23	2.11	0.49
1:A:245:LYS:NZ	4:A:613:HOH:O	2.38	0.49
1:C:296:GLU:CB	1:C:297:GLY:CA	2.91	0.49
1:D:27:ASP:OD1	2:D:500:5DK:NE	2.44	0.49
1:C:296:GLU:OE2	1:C:315:ALA:O	2.31	0.48
1:C:318:THR:HG22	1:C:321:GLU:H	1.78	0.48
1:C:115:PHE:CE2	1:C:117:ASN:HB2	2.49	0.48
1:A:115:PHE:CE2	1:A:117:ASN:HB2	2.48	0.48

Continued on next page...

Continued from previous page...

Atom-1	Atom-2	Interatomic distance (Å)	Clash overlap (Å)
1:C:99:ARG:HH11	1:C:99:ARG:HG2	1.79	0.48
1:B:296:GLU:HG2	1:B:297:GLY:HA3	1.96	0.48
1:A:117:ASN:HB3	4:A:606:HOH:O	2.14	0.47
1:B:296:GLU:HB3	1:B:297:GLY:HA3	1.96	0.47
1:B:343:GLU:OE1	4:B:507:HOH:O	2.20	0.47
1:A:29:HIS:CE1	2:A:500:5DK:CZ	2.96	0.47
1:D:296:GLU:HB3	1:D:297:GLY:HA3	1.90	0.47
1:B:221:LYS:HE2	2:B:401:5DK:C4A	2.45	0.47
1:A:337:ARG:NH2	1:D:208:GLU:OE2	2.40	0.47
1:A:294:GLY:N	4:A:603:HOH:O	2.05	0.47
1:D:135:ASP:OD1	1:D:136:ALA:N	2.48	0.46
1:D:157:THR:HA	1:D:158:PRO:C	2.36	0.46
1:D:190:SER:OG	1:D:221:LYS:CD	2.64	0.46
2:A:500:5DK:H21	2:A:500:5DK:O3P	2.16	0.46
1:B:324:GLU:OE1	4:B:508:HOH:O	2.21	0.46
2:D:500:5DK:N	2:D:500:5DK:O3	2.41	0.46
1:D:39:GLN:NE2	4:D:626:HOH:O	2.47	0.45
1:B:172:ARG:NH2	4:B:514:HOH:O	2.36	0.45
1:B:318:THR:HG23	4:B:582:HOH:O	2.16	0.45
1:A:117:ASN:CB	4:A:606:HOH:O	2.65	0.44
1:C:313:ALA:HB2	1:C:350:MET:HG2	1.98	0.44
1:D:291:ALA:O	1:D:370:ARG:HD2	2.18	0.44
1:A:192:ARG:HH12	1:A:202:HIS:CE1	2.36	0.43
1:A:296:GLU:CB	1:A:297:GLY:CA	2.96	0.43
1:B:296:GLU:CB	1:B:297:GLY:CA	2.96	0.43
1:A:288:VAL:HG22	1:A:366:VAL:HG11	2.00	0.43
1:C:320:THR:O	1:C:324:GLU:HG3	2.19	0.43
1:B:115:PHE:CE1	2:B:401:5DK:H16	2.53	0.43
2:A:500:5DK:H20	1:C:252:LEU:HG	2.01	0.43
1:C:326:LEU:HD11	1:C:369:LEU:HD13	2.00	0.43
1:C:360:GLU:HB2	1:C:361:PRO:HD3	2.00	0.43
2:C:500:5DK:H21	2:C:500:5DK:O1P	2.19	0.43
1:D:195:ASP:OD1	1:D:306:ARG:NH2	2.48	0.43
1:D:107:ARG:HD2	1:D:149:SER:O	2.19	0.42
1:B:115:PHE:CE2	1:B:117:ASN:HB2	2.54	0.42
1:C:110:LEU:HD23	1:C:341:TRP:CE2	2.54	0.42
1:B:221:LYS:HE2	2:B:401:5DK:N	2.34	0.42
1:B:29:HIS:NE2	1:B:221:LYS:HE3	2.35	0.42
1:C:99:ARG:NH1	1:C:99:ARG:HG2	2.34	0.42
1:A:190:SER:HA	1:A:218:ASP:HB3	2.03	0.41
1:B:30:ALA:HA	1:B:356:SER:HB3	2.02	0.41

Continued on next page...

Continued from previous page...

Atom-1	Atom-2	Interatomic distance (Å)	Clash overlap (Å)
1:A:296:GLU:HG2	1:A:297:GLY:HA3	2.02	0.41
1:B:245:LYS:NZ	4:B:530:HOH:O	2.53	0.41
1:B:34:LEU:HD23	1:B:224:PRO:HG2	2.01	0.41
1:C:155:VAL:HG11	1:C:166:LEU:HD22	2.02	0.41
1:C:221:LYS:HE2	2:C:500:5DK:C3	2.51	0.41
1:C:297:GLY:O	1:C:314:PHE:HA	2.21	0.41
1:C:314:PHE:CZ	1:C:322:VAL:HG21	2.55	0.41
1:D:218:ASP:OD2	1:D:221:LYS:NZ	2.38	0.41
1:B:127:LEU:N	1:B:127:LEU:HD22	2.36	0.40
1:A:43:ASN:ND2	4:A:627:HOH:O	2.54	0.40
1:B:218:ASP:OD2	1:B:221:LYS:NZ	2.52	0.40

All (2) symmetry-related close contacts are listed below. The label for Atom-2 includes the symmetry operator and encoded unit-cell translations to be applied.

Atom-1	Atom-2	Interatomic distance (Å)	Clash overlap (Å)
4:A:764:HOH:O	4:B:661:HOH:O[1_655]	2.09	0.11
4:A:758:HOH:O	4:B:657:HOH:O[4_555]	2.14	0.06

5.3 Torsion angles

5.3.1 Protein backbone

In the following table, the Percentiles column shows the percent Ramachandran outliers of the chain as a percentile score with respect to all X-ray entries followed by that with respect to entries of similar resolution.

The Analysed column shows the number of residues for which the backbone conformation was analysed, and the total number of residues.

Mol	Chain	Analysed	Favoured	Allowed	Outliers	Percentiles	
1	A	349/376 (93%)	341 (98%)	8 (2%)	0	100	100
1	B	349/376 (93%)	345 (99%)	4 (1%)	0	100	100
1	C	349/376 (93%)	343 (98%)	6 (2%)	0	100	100
1	D	349/376 (93%)	341 (98%)	8 (2%)	0	100	100
All	All	1396/1504 (93%)	1370 (98%)	26 (2%)	0	100	100

There are no Ramachandran outliers to report.

5.3.2 Protein sidechains [i](#)

In the following table, the Percentiles column shows the percent sidechain outliers of the chain as a percentile score with respect to all X-ray entries followed by that with respect to entries of similar resolution.

The Analysed column shows the number of residues for which the sidechain conformation was analysed, and the total number of residues.

Mol	Chain	Analysed	Rotameric	Outliers	Percentiles	
1	A	291/315 (92%)	288 (99%)	3 (1%)	76	85
1	B	291/315 (92%)	290 (100%)	1 (0%)	92	96
1	C	291/315 (92%)	290 (100%)	1 (0%)	92	96
1	D	291/315 (92%)	289 (99%)	2 (1%)	84	91
All	All	1164/1260 (92%)	1157 (99%)	7 (1%)	86	92

All (7) residues with a non-rotameric sidechain are listed below:

Mol	Chain	Res	Type
1	A	221	LYS
1	A	314	PHE
1	A	318	THR
1	B	318	THR
1	C	314	PHE
1	D	145	GLU
1	D	314	PHE

Some sidechains can be flipped to improve hydrogen bonding and reduce clashes. There are no such sidechains identified.

5.3.3 RNA [i](#)

There are no RNA molecules in this entry.

5.4 Non-standard residues in protein, DNA, RNA chains [i](#)

There are no non-standard protein/DNA/RNA residues in this entry.

5.5 Carbohydrates [i](#)

There are no carbohydrates in this entry.

5.6 Ligand geometry

Of 5 ligands modelled in this entry, 1 is monoatomic - leaving 4 for Mogul analysis.

In the following table, the Counts columns list the number of bonds (or angles) for which Mogul statistics could be retrieved, the number of bonds (or angles) that are observed in the model and the number of bonds (or angles) that are defined in the Chemical Component Dictionary. The Link column lists molecule types, if any, to which the group is linked. The Z score for a bond length (or angle) is the number of standard deviations the observed value is removed from the expected value. A bond length (or angle) with $|Z| > 2$ is considered an outlier worth inspection. RMSZ is the root-mean-square of all Z scores of the bond lengths (or angles).

Mol	Type	Chain	Res	Link	Bond lengths			Bond angles		
					Counts	RMSZ	# Z > 2	Counts	RMSZ	# Z > 2
2	5DK	B	401	-	24,27,27	2.11	3 (12%)	28,37,37	1.64	7 (25%)
2	5DK	A	500	-	24,27,27	2.15	4 (16%)	28,37,37	1.98	7 (25%)
2	5DK	D	500	-	24,27,27	1.97	3 (12%)	28,37,37	2.05	6 (21%)
2	5DK	C	500	-	24,27,27	2.35	7 (29%)	28,37,37	2.00	5 (17%)

In the following table, the Chirals column lists the number of chiral outliers, the number of chiral centers analysed, the number of these observed in the model and the number defined in the Chemical Component Dictionary. Similar counts are reported in the Torsion and Rings columns. '-' means no outliers of that kind were identified.

Mol	Type	Chain	Res	Link	Chirals	Torsions	Rings
2	5DK	B	401	-	-	7/18/22/22	0/1/1/1
2	5DK	A	500	-	-	6/18/22/22	0/1/1/1
2	5DK	D	500	-	-	8/18/22/22	0/1/1/1
2	5DK	C	500	-	-	8/18/22/22	0/1/1/1

All (17) bond length outliers are listed below:

Mol	Chain	Res	Type	Atoms	Z	Observed(Å)	Ideal(Å)
2	A	500	5DK	CZ-NE	7.22	1.47	1.33
2	C	500	5DK	CZ-NE	7.17	1.47	1.33
2	B	401	5DK	CZ-NE	7.03	1.47	1.33
2	D	500	5DK	CZ-NE	6.84	1.46	1.33
2	C	500	5DK	C4-C4A	5.39	1.56	1.46
2	A	500	5DK	C4-C4A	5.10	1.56	1.46
2	B	401	5DK	C4-C4A	5.07	1.56	1.46
2	D	500	5DK	C4-C4A	4.23	1.54	1.46
2	C	500	5DK	P-O1P	-3.37	1.41	1.54
2	A	500	5DK	CZ-NH1	3.08	1.47	1.34

Continued on next page...

Continued from previous page...

Mol	Chain	Res	Type	Atoms	Z	Observed(Å)	Ideal(Å)
2	B	401	5DK	CZ-NH1	3.04	1.47	1.34
2	D	500	5DK	CZ-NH1	2.99	1.47	1.34
2	C	500	5DK	CZ-NH1	2.97	1.47	1.34
2	C	500	5DK	P-O3P	-2.62	1.42	1.50
2	C	500	5DK	C2A-C2	2.45	1.54	1.50
2	C	500	5DK	P-O2P	-2.36	1.45	1.54
2	A	500	5DK	C2A-C2	2.13	1.54	1.50

All (25) bond angle outliers are listed below:

Mol	Chain	Res	Type	Atoms	Z	Observed(°)	Ideal(°)
2	D	500	5DK	CA-N-C4A	-6.86	108.10	117.40
2	C	500	5DK	CA-N-C4A	-6.65	108.39	117.40
2	A	500	5DK	CA-N-C4A	-6.39	108.74	117.40
2	D	500	5DK	C4-C4A-N	-5.48	110.84	123.01
2	B	401	5DK	C4-C4A-N	-4.76	112.43	123.01
2	C	500	5DK	O2P-P-O4P	4.39	118.41	106.73
2	A	500	5DK	C4-C4A-N	-4.14	113.81	123.01
2	C	500	5DK	C4-C4A-N	-3.81	114.56	123.01
2	B	401	5DK	CA-N-C4A	-3.32	112.90	117.40
2	A	500	5DK	C2A-C2-C3	-3.02	117.16	120.89
2	B	401	5DK	C3-C4-C5	-2.95	116.00	118.26
2	C	500	5DK	O1P-P-O3P	-2.94	99.18	110.68
2	A	500	5DK	C3-C4-C5	-2.91	116.03	118.26
2	D	500	5DK	O4P-P-O3P	2.72	114.09	106.47
2	B	401	5DK	O4P-P-O3P	2.62	113.83	106.47
2	B	401	5DK	O3-C3-C2	2.34	122.58	117.49
2	B	401	5DK	O1P-P-O4P	2.33	112.92	106.73
2	D	500	5DK	O2P-P-O4P	2.32	112.89	106.73
2	A	500	5DK	C3-C4-C4A	2.31	124.71	120.41
2	B	401	5DK	O1P-P-O3P	-2.17	102.20	110.68
2	A	500	5DK	O1P-P-O4P	2.12	112.39	106.73
2	D	500	5DK	O2P-P-O3P	-2.10	102.46	110.68
2	A	500	5DK	O4P-C5A-C5	-2.09	105.37	109.35
2	D	500	5DK	C2A-C2-C3	-2.08	118.32	120.89
2	C	500	5DK	CG-CB-CA	-2.00	111.28	114.78

There are no chirality outliers.

All (29) torsion outliers are listed below:

Mol	Chain	Res	Type	Atoms
2	B	401	5DK	N-CA-CB-CG

Continued on next page...

Continued from previous page...

Mol	Chain	Res	Type	Atoms
2	B	401	5DK	C-CA-CB-CG
2	B	401	5DK	CB-CA-N-C4A
2	B	401	5DK	C-CA-N-C4A
2	B	401	5DK	NH1-CZ-NE-CD
2	A	500	5DK	N-CA-CB-CG
2	A	500	5DK	C-CA-CB-CG
2	A	500	5DK	CB-CA-N-C4A
2	A	500	5DK	C-CA-N-C4A
2	A	500	5DK	NH1-CZ-NE-CD
2	D	500	5DK	C5A-O4P-P-O1P
2	D	500	5DK	C5A-O4P-P-O3P
2	C	500	5DK	N-CA-CB-CG
2	C	500	5DK	C-CA-CB-CG
2	C	500	5DK	CB-CA-N-C4A
2	C	500	5DK	C-CA-N-C4A
2	C	500	5DK	NH1-CZ-NE-CD
2	C	500	5DK	NH2-CZ-NE-CD
2	D	500	5DK	C4-C4A-N-CA
2	B	401	5DK	NH2-CZ-NE-CD
2	B	401	5DK	C4-C4A-N-CA
2	D	500	5DK	C-CA-N-C4A
2	D	500	5DK	C5A-O4P-P-O2P
2	C	500	5DK	C5A-O4P-P-O2P
2	A	500	5DK	NE-CD-CG-CB
2	D	500	5DK	CA-CB-CG-CD
2	D	500	5DK	NE-CD-CG-CB
2	C	500	5DK	C5A-O4P-P-O3P
2	D	500	5DK	NH1-CZ-NE-CD

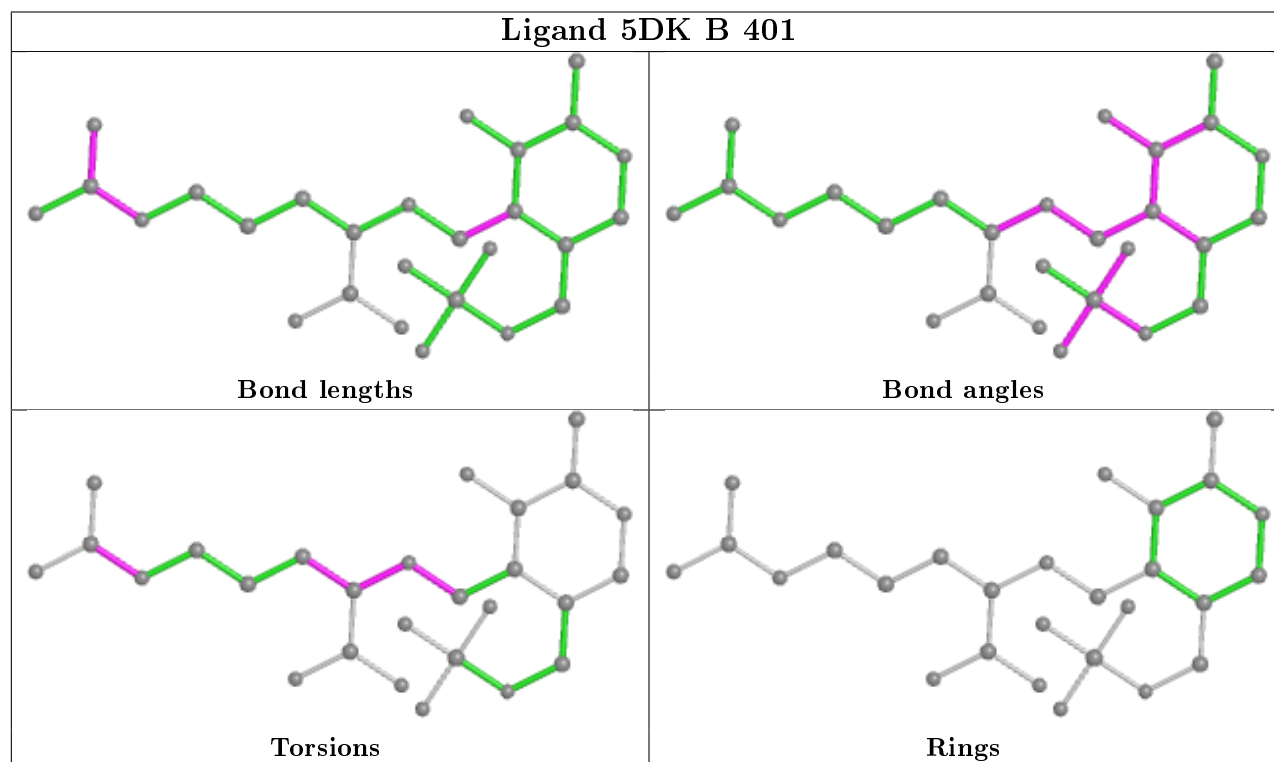
There are no ring outliers.

4 monomers are involved in 15 short contacts:

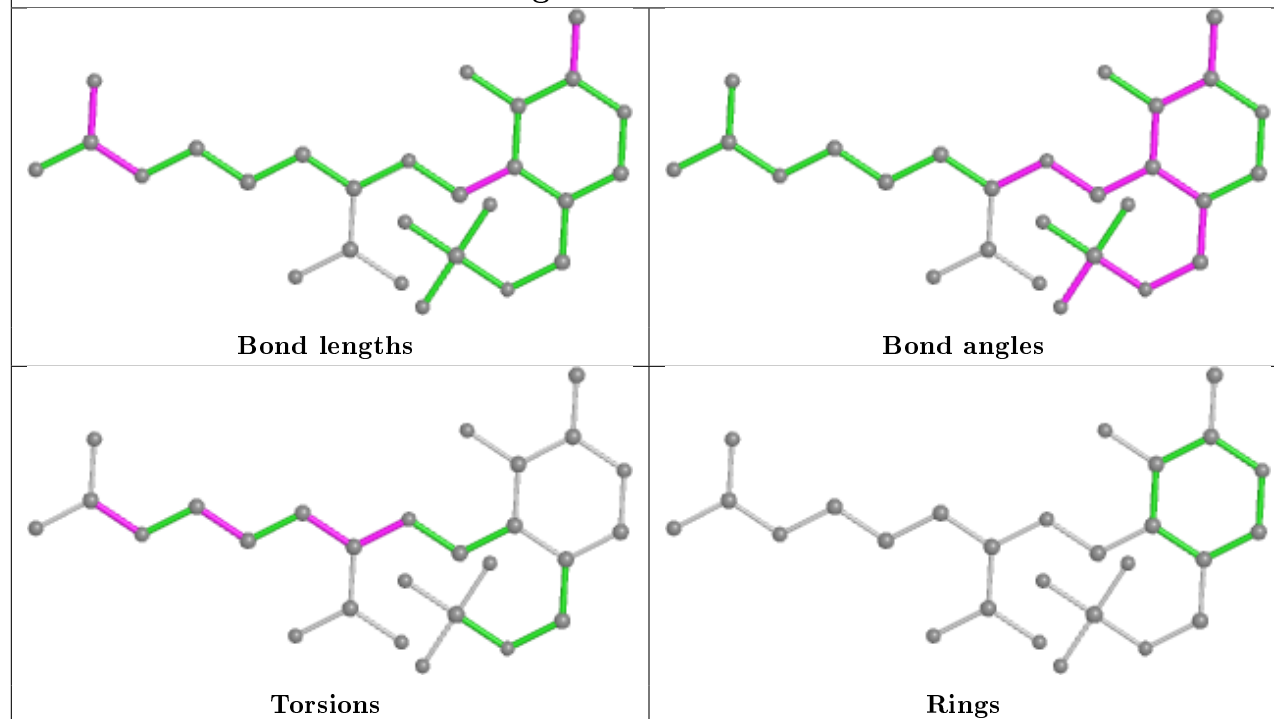
Mol	Chain	Res	Type	Clashes	Symm-Clashes
2	B	401	5DK	4	0
2	A	500	5DK	5	0
2	D	500	5DK	4	0
2	C	500	5DK	2	0

The following is a two-dimensional graphical depiction of Mogul quality analysis of bond lengths, bond angles, torsion angles, and ring geometry for all instances of the Ligand of Interest. In addition, ligands with molecular weight > 250 and outliers as shown on the validation Tables will also be included. For torsion angles, if less than 5% of the Mogul distribution of torsion angles is

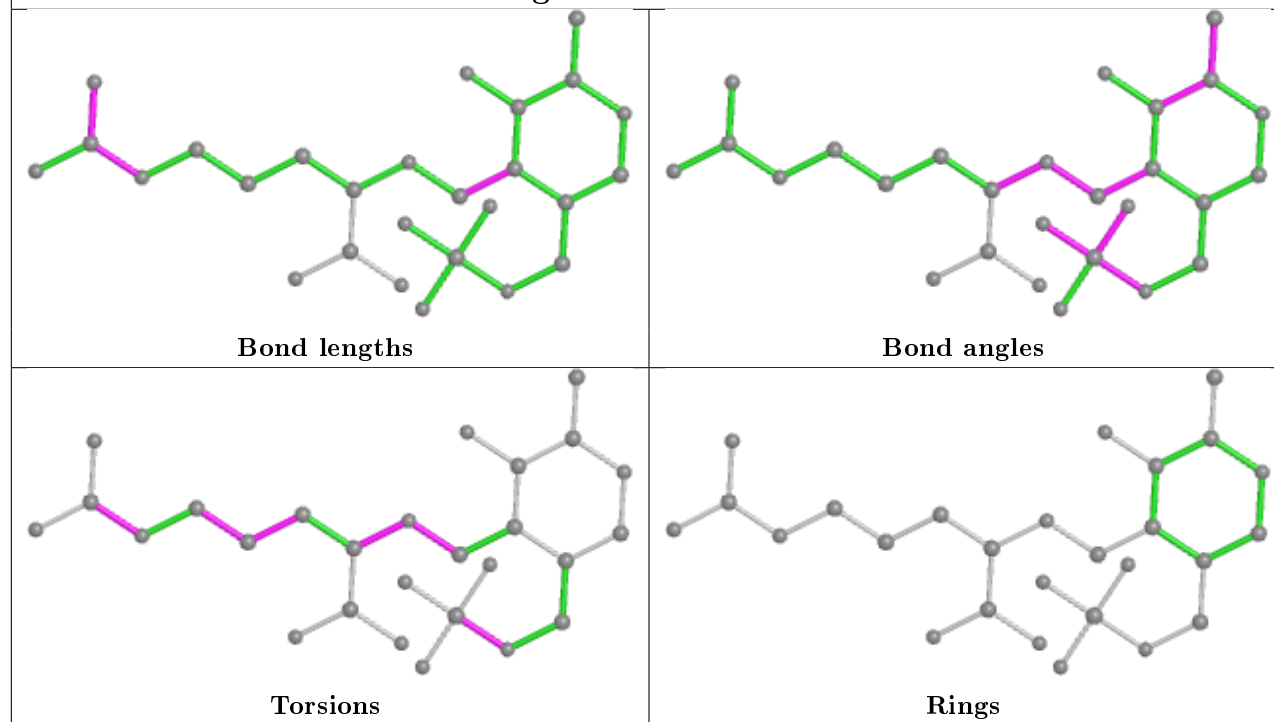
within 10 degrees of the torsion angle in question, then that torsion angle is considered an outlier. Any bond that is central to one or more torsion angles identified as an outlier by Mogul will be highlighted in the graph. For rings, the root-mean-square deviation (RMSD) between the ring in question and similar rings identified by Mogul is calculated over all ring torsion angles. If the average RMSD is greater than 60 degrees and the minimal RMSD between the ring in question and any Mogul-identified rings is also greater than 60 degrees, then that ring is considered an outlier. The outliers are highlighted in purple. The color gray indicates Mogul did not find sufficient equivalents in the CSD to analyse the geometry.

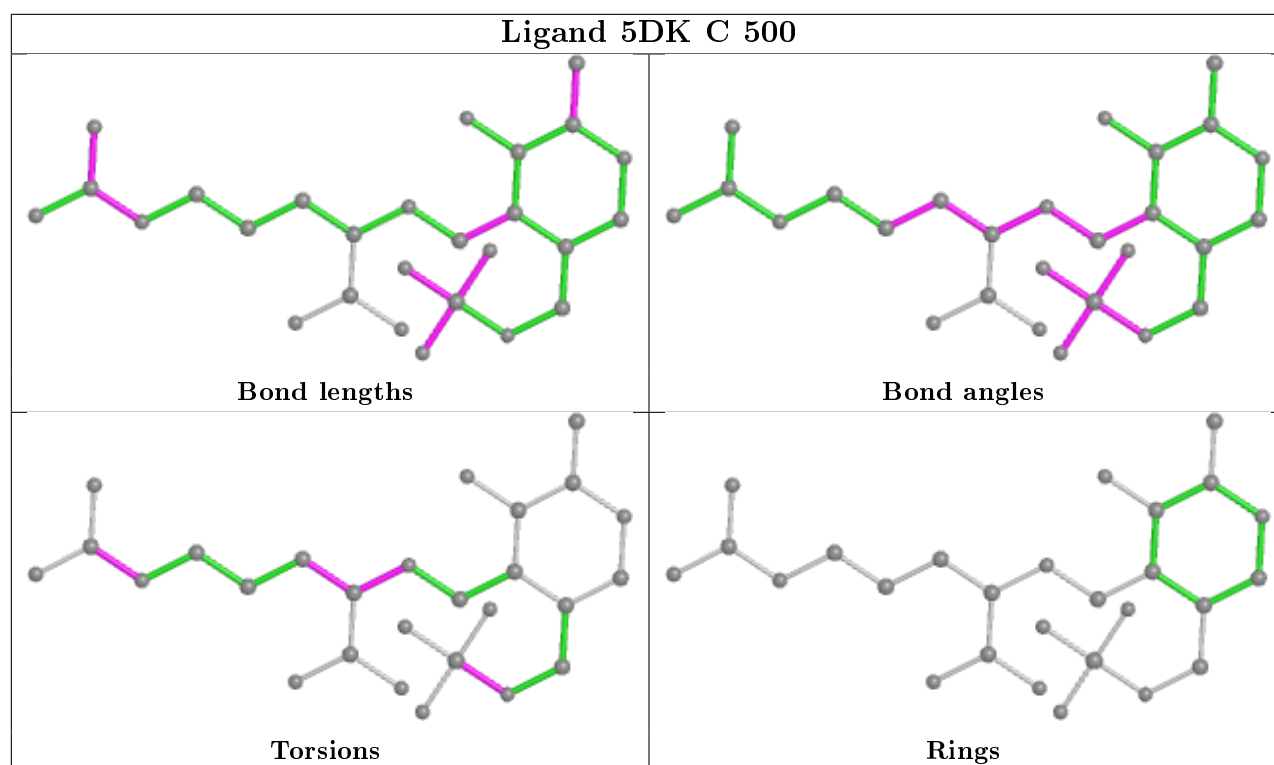


Ligand 5DK A 500



Ligand 5DK D 500





5.7 Other polymers [i](#)

There are no such residues in this entry.

5.8 Polymer linkage issues [i](#)

There are no chain breaks in this entry.

6 Fit of model and data ⓘ

6.1 Protein, DNA and RNA chains ⓘ

In the following table, the column labelled ‘#RSRZ> 2’ contains the number (and percentage) of RSRZ outliers, followed by percent RSRZ outliers for the chain as percentile scores relative to all X-ray entries and entries of similar resolution. The OWAB column contains the minimum, median, 95th percentile and maximum values of the occupancy-weighted average B-factor per residue. The column labelled ‘Q< 0.9’ lists the number of (and percentage) of residues with an average occupancy less than 0.9.

Mol	Chain	Analysed	<RSRZ>	#RSRZ>2	OWAB(Å ²)	Q<0.9
1	A	351/376 (93%)	-0.12	14 (3%) 38 36	19, 30, 62, 93	0
1	B	351/376 (93%)	-0.12	10 (2%) 53 51	19, 30, 62, 88	0
1	C	351/376 (93%)	-0.05	11 (3%) 49 46	21, 32, 60, 96	0
1	D	351/376 (93%)	-0.18	6 (1%) 70 68	19, 30, 55, 93	0
All	All	1404/1504 (93%)	-0.12	41 (2%) 51 49	19, 31, 60, 96	0

All (41) RSRZ outliers are listed below:

Mol	Chain	Res	Type	RSRZ
1	C	316	GLY	7.4
1	D	316	GLY	7.2
1	A	328	ARG	5.5
1	C	315	ALA	5.2
1	A	316	GLY	4.8
1	B	328	ARG	4.2
1	B	316	GLY	4.1
1	C	296	GLU	4.1
1	A	296	GLU	4.0
1	B	296	GLU	3.7
1	B	294	GLY	3.5
1	A	323	TRP	3.3
1	B	329	HIS	3.2
1	C	293	ALA	3.1
1	C	295	VAL	2.9
1	D	296	GLU	2.9
1	C	328	ARG	2.8
1	A	372	VAL	2.8
1	B	330	HIS	2.8
1	D	328	ARG	2.7
1	A	324	GLU	2.7

Continued on next page...

Continued from previous page...

Mol	Chain	Res	Type	RSRZ
1	A	317	ARG	2.6
1	A	329	HIS	2.6
1	A	330	HIS	2.5
1	A	373	LEU	2.4
1	D	88	TYR	2.4
1	B	372	VAL	2.4
1	B	317	ARG	2.3
1	A	325	GLU	2.3
1	B	88	TYR	2.3
1	A	326	LEU	2.3
1	C	88	TYR	2.3
1	A	54	GLN	2.3
1	B	371	THR	2.2
1	D	314	PHE	2.1
1	C	89	SER	2.1
1	C	325	GLU	2.1
1	C	320	THR	2.0
1	D	91	SER	2.0
1	A	371	THR	2.0
1	C	318	THR	2.0

6.2 Non-standard residues in protein, DNA, RNA chains [i](#)

There are no non-standard protein/DNA/RNA residues in this entry.

6.3 Carbohydrates [i](#)

There are no carbohydrates in this entry.

6.4 Ligands [i](#)

In the following table, the Atoms column lists the number of modelled atoms in the group and the number defined in the chemical component dictionary. The B-factors column lists the minimum, median, 95th percentile and maximum values of B factors of atoms in the group. The column labelled 'Q< 0.9' lists the number of atoms with occupancy less than 0.9.

Mol	Type	Chain	Res	Atoms	RSCC	RSR	B-factors(Å ²)	Q<0.9
3	MG	B	402	1/1	0.67	0.40	67,67,67,67	0
2	5DK	C	500	27/27	0.87	0.37	18,43,150,290	0
2	5DK	A	500	27/27	0.95	0.29	20,47,146,271	0

Continued on next page...

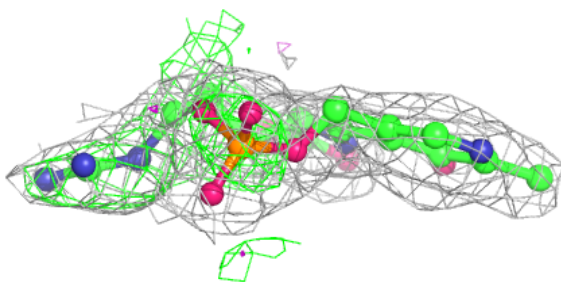
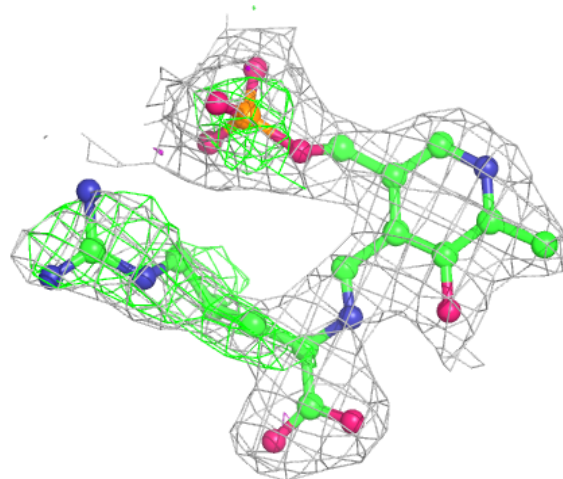
Continued from previous page...

Mol	Type	Chain	Res	Atoms	RSCC	RSR	B-factors(\AA^2)	Q<0.9
2	5DK	D	500	27/27	0.95	0.34	15,49,150,174	0
2	5DK	B	401	27/27	0.97	0.21	18,33,86,123	0

The following is a graphical depiction of the model fit to experimental electron density of all instances of the Ligand of Interest. In addition, ligands with molecular weight > 250 and outliers as shown on the geometry validation Tables will also be included. Each fit is shown from different orientation to approximate a three-dimensional view.

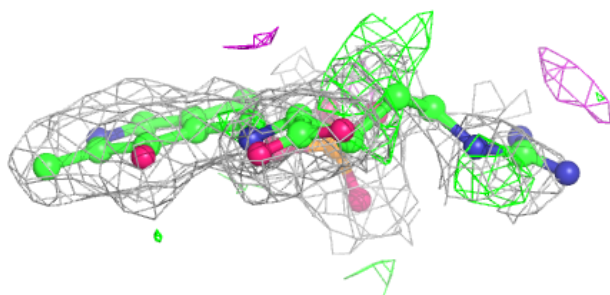
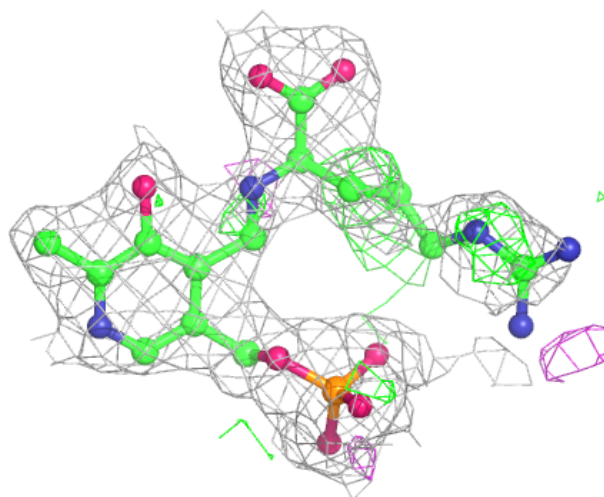
Electron density around 5DK C 500:

2mF_o-DF_c (at 0.7 rmsd) in gray
mF_o-DF_c (at 3 rmsd) in purple (negative)
and green (positive)



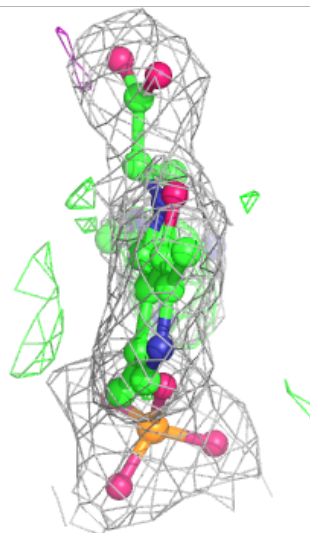
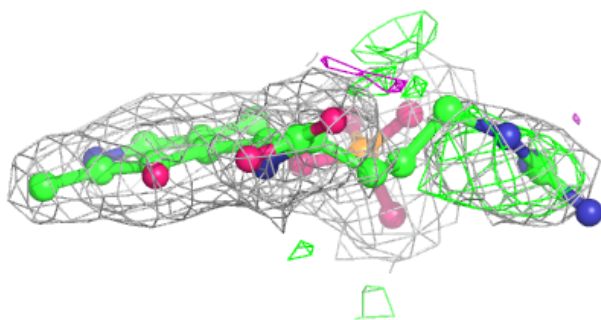
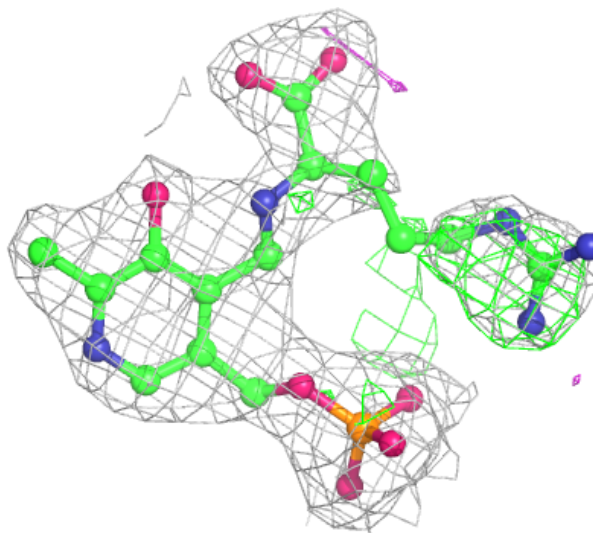
Electron density around 5DK A 500:

$2mF_o-DF_c$ (at 0.7 rmsd) in gray
 mF_o-DF_c (at 3 rmsd) in purple (negative)
and green (positive)



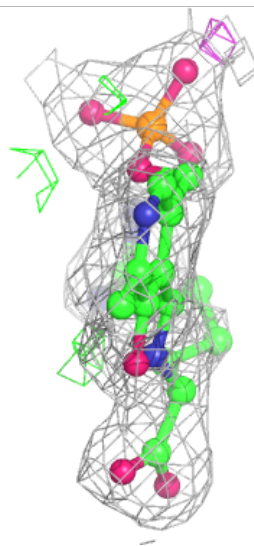
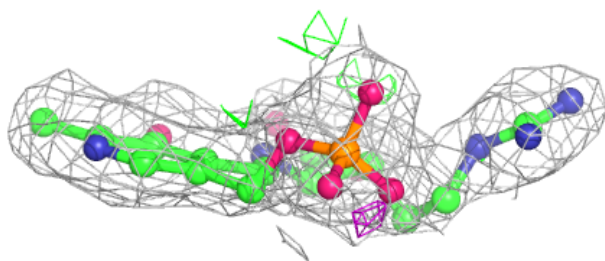
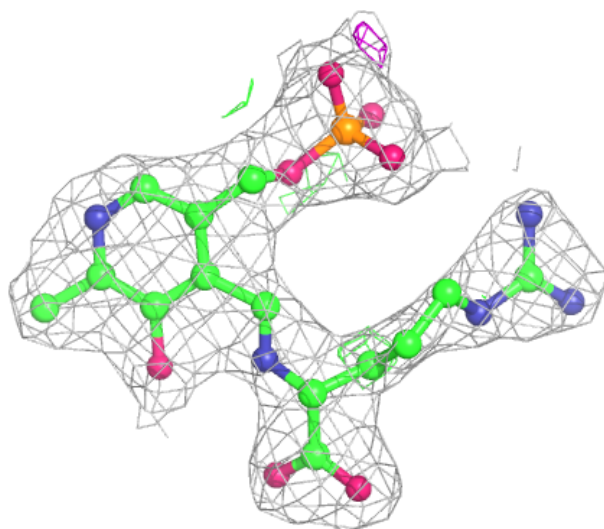
Electron density around 5DK D 500:

$2mF_o-DF_c$ (at 0.7 rmsd) in gray
 mF_o-DF_c (at 3 rmsd) in purple (negative)
and green (positive)



Electron density around 5DK B 401:

$2mF_o-DF_c$ (at 0.7 rmsd) in gray
 mF_o-DF_c (at 3 rmsd) in purple (negative)
and green (positive)



6.5 Other polymers [i](#)

There are no such residues in this entry.