



# Full wwPDB X-ray Structure Validation Report ⓘ

May 22, 2020 – 01:39 am BST

PDB ID : 5DJ9  
Title : Crystal structure of the ornithine aminotransferase from *Toxoplasma gondii* ME49 in a complex with gabaculine  
Authors : Filippova, E.V.; Minasov, G.; Flores, K.; Le, H.V.; Silverman, R.B.; McLeod, R.L.; Anderson, W.F.; Center for Structural Genomics of Infectious Diseases (CSGID)  
Deposited on : 2015-09-01  
Resolution : 1.55 Å(reported)

This is a Full wwPDB X-ray Structure Validation Report for a publicly released PDB entry.

We welcome your comments at [validation@mail.wwpdb.org](mailto:validation@mail.wwpdb.org)

A user guide is available at

<https://www.wwpdb.org/validation/2017/XrayValidationReportHelp>

with specific help available everywhere you see the ⓘ symbol.

---

The following versions of software and data (see [references ⓘ](#)) were used in the production of this report:

MolProbity : 4.02b-467  
Mogul : 1.8.5 (274361), CSD as541be (2020)  
Xtriage (Phenix) : 1.13  
EDS : 2.11  
buster-report : 1.1.7 (2018)  
Percentile statistics : 20191225.v01 (using entries in the PDB archive December 25th 2019)  
Refmac : 5.8.0158  
CCP4 : 7.0.044 (Gargrove)  
Ideal geometry (proteins) : Engh & Huber (2001)  
Ideal geometry (DNA, RNA) : Parkinson et al. (1996)  
Validation Pipeline (wwPDB-VP) : 2.11

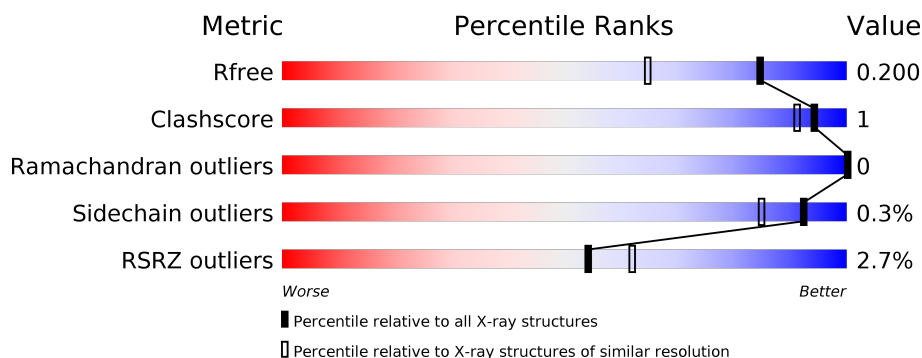
# 1 Overall quality at a glance

The following experimental techniques were used to determine the structure:

*X-RAY DIFFRACTION*

The reported resolution of this entry is 1.55 Å.

Percentile scores (ranging between 0-100) for global validation metrics of the entry are shown in the following graphic. The table shows the number of entries on which the scores are based.



Metric	Whole archive (#Entries)	Similar resolution (#Entries, resolution range(Å))
$R_{free}$	130704	1483 (1.56-1.56)
Clashscore	141614	1529 (1.56-1.56)
Ramachandran outliers	138981	1498 (1.56-1.56)
Sidechain outliers	138945	1495 (1.56-1.56)
RSRZ outliers	127900	1465 (1.56-1.56)

The table below summarises the geometric issues observed across the polymeric chains and their fit to the electron density. The red, orange, yellow and green segments on the lower bar indicate the fraction of residues that contain outliers for  $\geq 3$ , 2, 1 and 0 types of geometric quality criteria respectively. A grey segment represents the fraction of residues that are not modelled. The numeric value for each fraction is indicated below the corresponding segment, with a dot representing fractions  $\leq 5\%$ . The upper red bar (where present) indicates the fraction of residues that have poor fit to the electron density. The numeric value is given above the bar.

Mol	Chain	Length	Quality of chain
1	A	441	<div> <div>3%</div> <div> <div></div> <div>91%</div> <div>5%</div> </div> </div>
1	B	441	<div> <div>2%</div> <div> <div></div> <div>92%</div> <div>5%</div> </div> </div>

## 2 Entry composition [i](#)

There are 6 unique types of molecules in this entry. The entry contains 7418 atoms, of which 0 are hydrogens and 0 are deuteriums.

In the tables below, the ZeroOcc column contains the number of atoms modelled with zero occupancy, the AltConf column contains the number of residues with at least one atom in alternate conformation and the Trace column contains the number of residues modelled with at most 2 atoms.

- Molecule 1 is a protein called Ornithine aminotransferase, mitochondrial.

Mol	Chain	Residues	Atoms					ZeroOcc	AltConf	Trace
1	A	421	Total	C	N	O	S	0	2	0
			3279	2067	579	613	20			
1	B	421	Total	C	N	O	S	0	4	0
			3293	2076	581	615	21			

- Molecule 2 is SULFATE ION (three-letter code: SO4) (formula: O<sub>4</sub>S).



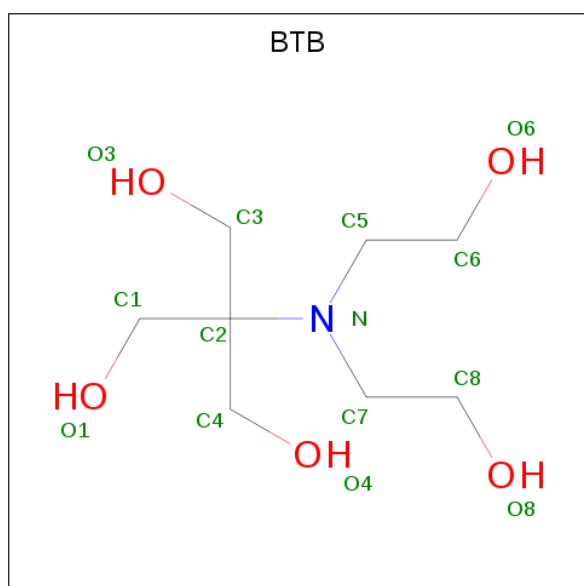
Mol	Chain	Residues	Atoms			ZeroOcc	AltConf
2	A	1	Total	O	S	0	0
			5	4	1		
2	A	1	Total	O	S	0	0
			5	4	1		
2	A	1	Total	O	S	0	0
			5	4	1		
2	B	1	Total	O	S	0	0
			5	4	1		

*Continued on next page...*

Continued from previous page...

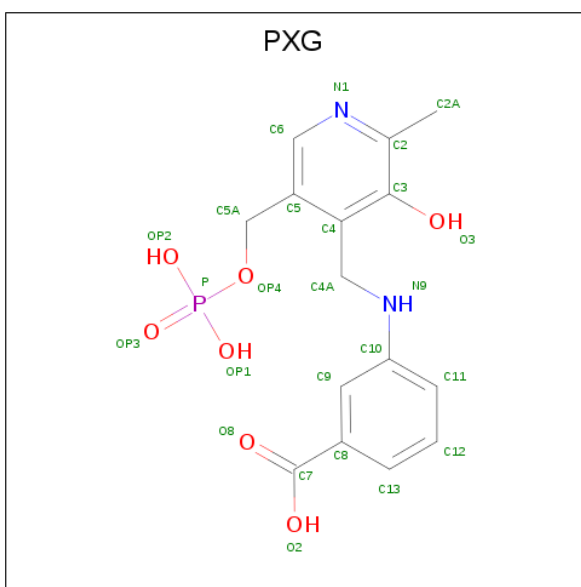
Mol	Chain	Residues	Atoms			ZeroOcc	AltConf
2	B	1	Total	O	S	0	0
			5	4	1		
2	B	1	Total	O	S	0	0
			5	4	1		
2	B	1	Total	O	S	0	0
			5	4	1		
2	B	1	Total	O	S	0	0
			5	4	1		

- Molecule 3 is 2-[BIS-(2-HYDROXY-ETHYL)-AMINO]-2-HYDROXYMETHYL-PROPAN E-1,3-DIOL (three-letter code: BTB) (formula:  $C_8H_{19}NO_5$ ).



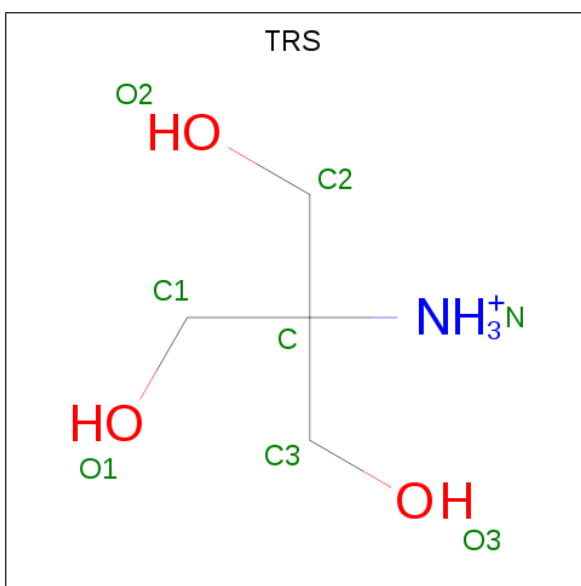
Mol	Chain	Residues	Atoms				ZeroOcc	AltConf
3	A	1	Total	C	N	O	0	0
			12	7	1	4		

- Molecule 4 is 3-[O-PHOSPHONOPYRIDOXYL]--AMINO-BENZOIC ACID (three-letter code: PXG) (formula:  $C_{15}H_{17}N_2O_7P$ ).



Mol	Chain	Residues	Atoms					ZeroOcc	AltConf
4	A	1	Total	C	N	O	P	0	0
			25	15	2	7	1		
4	B	1	Total	C	N	O	P	0	0
			25	15	2	7	1		

- Molecule 5 is 2-AMINO-2-HYDROXYMETHYL-PROPANE-1,3-DIOL (three-letter code: TRS) (formula:  $C_4H_{12}NO_3$ ).



Mol	Chain	Residues	Atoms				ZeroOcc	AltConf
5	B	1	Total	C	N	O	0	0
			7	4	1	2		

*Continued on next page...*

*Continued from previous page...*

Mol	Chain	Residues	Atoms				ZeroOcc	AltConf
5	B	1	Total	C	N	O	0	0
			8	4	1	3		

- Molecule 6 is water.

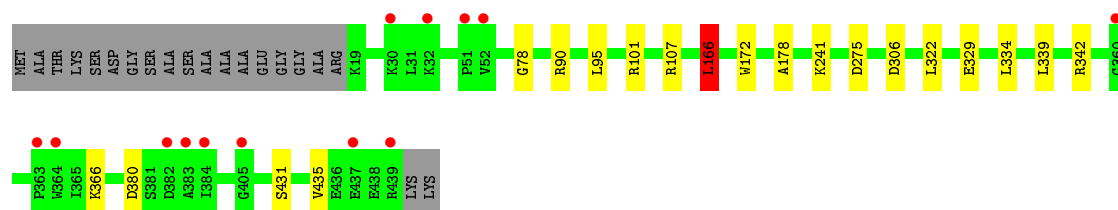
Mol	Chain	Residues	Atoms		ZeroOcc	AltConf
6	A	366	Total	O	0	3
			369	369		
6	B	360	Total	O	0	0
			360	360		

### 3 Residue-property plots [i](#)

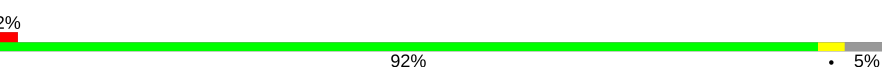
These plots are drawn for all protein, RNA and DNA chains in the entry. The first graphic for a chain summarises the proportions of the various outlier classes displayed in the second graphic. The second graphic shows the sequence view annotated by issues in geometry and electron density. Residues are color-coded according to the number of geometric quality criteria for which they contain at least one outlier: green = 0, yellow = 1, orange = 2 and red = 3 or more. A red dot above a residue indicates a poor fit to the electron density ( $RSRZ > 2$ ). Stretches of 2 or more consecutive residues without any outlier are shown as a green connector. Residues present in the sample, but not in the model, are shown in grey.

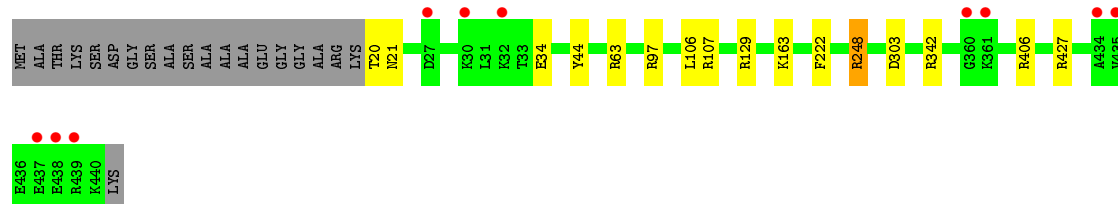
- Molecule 1: Ornithine aminotransferase, mitochondrial

Chain A: 



- Molecule 1: Ornithine aminotransferase, mitochondrial

Chain B: 



## 4 Data and refinement statistics

Property	Value	Source
Space group	P 1	Depositor
Cell constants a, b, c, $\alpha$ , $\beta$ , $\gamma$	56.26Å 60.89Å 63.50Å 100.83° 92.38° 107.86°	Depositor
Resolution (Å)	30.00 – 1.55 30.00 – 1.54	Depositor EDS
% Data completeness (in resolution range)	95.7 (30.00-1.55) 95.7 (30.00-1.54)	Depositor EDS
$R_{merge}$	0.06	Depositor
$R_{sym}$	(Not available)	Depositor
$\langle I/\sigma(I) \rangle$ <sup>1</sup>	1.94 (at 1.54Å)	Xtriage
Refinement program	REFMAC 5.8.0124	Depositor
R, $R_{free}$	0.158 , 0.190 0.169 , 0.200	Depositor DCC
$R_{free}$ test set	5425 reflections (4.93%)	wwPDB-VP
Wilson B-factor (Å <sup>2</sup> )	16.7	Xtriage
Anisotropy	0.209	Xtriage
Bulk solvent $k_{sol}$ (e/Å <sup>3</sup> ), $B_{sol}$ (Å <sup>2</sup> )	0.37 , 42.1	EDS
L-test for twinning <sup>2</sup>	$\langle  L  \rangle = 0.50$ , $\langle L^2 \rangle = 0.33$	Xtriage
Estimated twinning fraction	No twinning to report.	Xtriage
$F_o, F_c$ correlation	0.97	EDS
Total number of atoms	7418	wwPDB-VP
Average B, all atoms (Å <sup>2</sup> )	23.0	wwPDB-VP

Xtriage's analysis on translational NCS is as follows: *The largest off-origin peak in the Patterson function is 6.19% of the height of the origin peak. No significant pseudotranslation is detected.*

<sup>1</sup>Intensities estimated from amplitudes.

<sup>2</sup>Theoretical values of  $\langle |L| \rangle$ ,  $\langle L^2 \rangle$  for acentric reflections are 0.5, 0.333 respectively for untwinned datasets, and 0.375, 0.2 for perfectly twinned datasets.



## 5 Model quality [i](#)

### 5.1 Standard geometry [i](#)

Bond lengths and bond angles in the following residue types are not validated in this section: TRS, PXG, SO4, BTB

The Z score for a bond length (or angle) is the number of standard deviations the observed value is removed from the expected value. A bond length (or angle) with  $|Z| > 5$  is considered an outlier worth inspection. RMSZ is the root-mean-square of all Z scores of the bond lengths (or angles).

Mol	Chain	Bond lengths		Bond angles	
		RMSZ	$\# Z  > 5$	RMSZ	$\# Z  > 5$
1	A	0.71	0/3342	0.89	7/4526 (0.2%)
1	B	0.74	2/3356 (0.1%)	0.92	8/4545 (0.2%)
All	All	0.72	2/6698 (0.0%)	0.91	15/9071 (0.2%)

All (2) bond length outliers are listed below:

Mol	Chain	Res	Type	Atoms	Z	Observed(Å)	Ideal(Å)
1	B	34	GLU	CD-OE2	5.43	1.31	1.25
1	B	44	TYR	CE1-CZ	-5.01	1.32	1.38

All (15) bond angle outliers are listed below:

Mol	Chain	Res	Type	Atoms	Z	Observed(°)	Ideal(°)
1	B	107	ARG	NE-CZ-NH2	-8.75	115.92	120.30
1	B	342	ARG	NE-CZ-NH2	-8.25	116.17	120.30
1	B	97	ARG	NE-CZ-NH2	6.46	123.53	120.30
1	A	166	LEU	CB-CG-CD1	-6.11	100.61	111.00
1	B	63	ARG	NE-CZ-NH2	5.87	123.23	120.30
1	B	129	ARG	NE-CZ-NH1	5.78	123.19	120.30
1	A	166	LEU	CA-CB-CG	5.73	128.47	115.30
1	A	342[A]	ARG	CG-CD-NE	-5.55	100.14	111.80
1	A	342[B]	ARG	CG-CD-NE	-5.55	100.14	111.80
1	B	427	ARG	NE-CZ-NH1	5.51	123.06	120.30
1	B	222	PHE	CB-CG-CD2	-5.48	116.97	120.80
1	A	306	ASP	CB-CG-OD1	5.41	123.16	118.30
1	B	342	ARG	NE-CZ-NH1	5.14	122.87	120.30
1	A	107	ARG	NE-CZ-NH2	-5.10	117.75	120.30
1	A	101	ARG	NE-CZ-NH2	5.01	122.80	120.30

There are no chirality outliers.

There are no planarity outliers.

## 5.2 Too-close contacts

In the following table, the Non-H and H(model) columns list the number of non-hydrogen atoms and hydrogen atoms in the chain respectively. The H(added) column lists the number of hydrogen atoms added and optimized by MolProbity. The Clashes column lists the number of clashes within the asymmetric unit, whereas Symm-Clashes lists symmetry related clashes.

Mol	Chain	Non-H	H(model)	H(added)	Clashes	Symm-Clashes
1	A	3279	0	3277	12	0
1	B	3293	0	3291	10	0
2	A	15	0	0	0	0
2	B	25	0	0	0	0
3	A	12	0	14	0	0
4	A	25	0	13	0	0
4	B	25	0	13	0	0
5	B	15	0	21	0	0
6	A	369	0	0	0	0
6	B	360	0	0	5	0
All	All	7418	0	6629	17	0

The all-atom clashscore is defined as the number of clashes found per 1000 atoms (including hydrogen atoms). The all-atom clashscore for this structure is 1.

All (17) close contacts within the same asymmetric unit are listed below, sorted by their clash magnitude.

Atom-1	Atom-2	Interatomic distance (Å)	Clash overlap (Å)
1:A:90:ARG:HH21	1:B:21:ASN:HD21	1.41	0.67
1:B:303:ASP:OD2	6:B:601:HOH:O	2.17	0.57
1:B:20:THR:N	6:B:605:HOH:O	2.45	0.49
1:B:248:ARG:NH1	6:B:606:HOH:O	2.47	0.48
1:A:166:LEU:HD12	1:A:166:LEU:N	2.30	0.47
1:B:163:LYS:NZ	6:B:602:HOH:O	2.44	0.47
1:A:366:LYS:HD3	1:A:380:ASP:HB2	1.95	0.47
1:A:431:SER:O	1:A:435:VAL:HG23	2.15	0.47
1:B:406:ARG:NH2	6:B:603:HOH:O	2.44	0.46
1:A:78:GLY:HA2	1:B:106:LEU:CG	2.46	0.46
1:A:78:GLY:HA2	1:B:106:LEU:HG	1.97	0.45
1:A:172:TRP:CZ2	1:A:178:ALA:HA	2.53	0.42
1:A:95:LEU:HD12	1:A:322:LEU:HD11	2.00	0.42
1:A:334:LEU:HD23	1:A:339:LEU:HD12	2.01	0.42

*Continued on next page...*

*Continued from previous page...*

Atom-1	Atom-2	Interatomic distance (Å)	Clash overlap (Å)
1:A:90:ARG:NH2	1:B:21:ASN:HD21	2.14	0.41
1:A:241:LYS:HE2	1:A:275:ASP:O	2.22	0.40
1:A:329:GLU:HA	1:B:21:ASN:HD22	1.86	0.40

There are no symmetry-related clashes.

## 5.3 Torsion angles [i](#)

### 5.3.1 Protein backbone [i](#)

In the following table, the Percentiles column shows the percent Ramachandran outliers of the chain as a percentile score with respect to all X-ray entries followed by that with respect to entries of similar resolution.

The Analysed column shows the number of residues for which the backbone conformation was analysed, and the total number of residues.

Mol	Chain	Analysed	Favoured	Allowed	Outliers	Percentiles	
1	A	421/441 (96%)	409 (97%)	12 (3%)	0	100	100
1	B	423/441 (96%)	405 (96%)	18 (4%)	0	100	100
All	All	844/882 (96%)	814 (96%)	30 (4%)	0	100	100

There are no Ramachandran outliers to report.

### 5.3.2 Protein sidechains [i](#)

In the following table, the Percentiles column shows the percent sidechain outliers of the chain as a percentile score with respect to all X-ray entries followed by that with respect to entries of similar resolution.

The Analysed column shows the number of residues for which the sidechain conformation was analysed, and the total number of residues.

Mol	Chain	Analysed	Rotameric	Outliers	Percentiles	
1	A	350/359 (98%)	349 (100%)	1 (0%)	92	85
1	B	352/359 (98%)	351 (100%)	1 (0%)	92	85
All	All	702/718 (98%)	700 (100%)	2 (0%)	92	85

All (2) residues with a non-rotameric sidechain are listed below:

Mol	Chain	Res	Type
1	A	166	LEU
1	B	248	ARG

Some sidechains can be flipped to improve hydrogen bonding and reduce clashes. All (5) such sidechains are listed below:

Mol	Chain	Res	Type
1	A	70	ASN
1	A	169	ASN
1	B	21	ASN
1	B	70	ASN
1	B	396	ASN

### 5.3.3 RNA [i](#)

There are no RNA molecules in this entry.

## 5.4 Non-standard residues in protein, DNA, RNA chains [i](#)

There are no non-standard protein/DNA/RNA residues in this entry.

## 5.5 Carbohydrates [i](#)

There are no carbohydrates in this entry.

## 5.6 Ligand geometry [i](#)

13 ligands are modelled in this entry.

In the following table, the Counts columns list the number of bonds (or angles) for which Mogul statistics could be retrieved, the number of bonds (or angles) that are observed in the model and the number of bonds (or angles) that are defined in the Chemical Component Dictionary. The Link column lists molecule types, if any, to which the group is linked. The Z score for a bond length (or angle) is the number of standard deviations the observed value is removed from the expected value. A bond length (or angle) with  $|Z| > 2$  is considered an outlier worth inspection. RMSZ is the root-mean-square of all Z scores of the bond lengths (or angles).

Mol	Type	Chain	Res	Link	Bond lengths			Bond angles		
					Counts	RMSZ	$\# Z  > 2$	Counts	RMSZ	$\# Z  > 2$
5	TRS	B	506	-	6,6,7	0.23	0	5,8,9	0.52	0
2	SO4	B	502	-	4,4,4	0.40	0	6,6,6	0.26	0
2	SO4	B	503	-	4,4,4	0.34	0	6,6,6	0.23	0

Mol	Type	Chain	Res	Link	Bond lengths			Bond angles		
					Counts	RMSZ	# Z  > 2	Counts	RMSZ	# Z  > 2
2	SO4	A	503	-	4,4,4	0.32	0	6,6,6	0.18	0
2	SO4	B	504	-	4,4,4	0.33	0	6,6,6	0.16	0
3	BTB	A	504	-	11,11,13	1.01	1 (9%)	6,14,16	1.00	0
5	TRS	B	507	-	7,7,7	0.31	0	9,9,9	0.35	0
2	SO4	A	502	-	4,4,4	0.44	0	6,6,6	0.19	0
4	PXG	A	505	-	24,26,26	2.11	4 (16%)	32,37,37	1.56	8 (25%)
2	SO4	B	505	-	4,4,4	0.39	0	6,6,6	0.24	0
4	PXG	B	508	-	24,26,26	1.95	4 (16%)	32,37,37	1.52	5 (15%)
2	SO4	A	501	-	4,4,4	0.36	0	6,6,6	0.07	0
2	SO4	B	501	-	4,4,4	0.33	0	6,6,6	0.15	0

In the following table, the Chirals column lists the number of chiral outliers, the number of chiral centers analysed, the number of these observed in the model and the number defined in the Chemical Component Dictionary. Similar counts are reported in the Torsion and Rings columns. '-' means no outliers of that kind were identified.

Mol	Type	Chain	Res	Link	Chirals	Torsions	Rings
5	TRS	B	507	-	-	3/9/9/9	-
4	PXG	A	505	-	-	3/11/15/15	0/2/2/2
5	TRS	B	506	-	-	0/6/6/9	-
3	BTB	A	504	-	-	2/18/18/21	-
4	PXG	B	508	-	-	3/11/15/15	0/2/2/2

All (9) bond length outliers are listed below:

Mol	Chain	Res	Type	Atoms	Z	Observed(Å)	Ideal(Å)
4	A	505	PXG	C3-C2	6.43	1.47	1.40
4	A	505	PXG	C3-C4	5.18	1.48	1.40
4	B	508	PXG	C3-C2	5.16	1.46	1.40
4	B	508	PXG	C3-C4	5.14	1.47	1.40
4	A	505	PXG	C5-C4	4.94	1.47	1.40
4	B	508	PXG	C5-C4	4.46	1.46	1.40
4	A	505	PXG	C8-C7	2.63	1.50	1.47
4	B	508	PXG	C8-C7	2.17	1.49	1.47
3	A	504	BTB	C5-N	2.07	1.49	1.46

All (13) bond angle outliers are listed below:

Mol	Chain	Res	Type	Atoms	Z	Observed(°)	Ideal(°)
4	A	505	PXG	C6-C5-C4	4.35	121.20	118.12

*Continued on next page...*

*Continued from previous page...*

Mol	Chain	Res	Type	Atoms	Z	Observed(°)	Ideal(°)
4	B	508	PXG	C6-N1-C2	3.52	125.69	119.17
4	B	508	PXG	C4A-C4-C3	3.28	123.56	120.04
4	B	508	PXG	OP4-P-OP3	-3.08	97.84	106.47
4	B	508	PXG	C11-C10-N9	-2.75	115.27	120.97
4	A	505	PXG	C6-N1-C2	2.66	124.10	119.17
4	A	505	PXG	C3-C4-C5	-2.32	116.49	118.72
4	A	505	PXG	C4A-C4-C3	2.21	122.41	120.04
4	B	508	PXG	C5-C6-N1	-2.16	120.22	123.82
4	A	505	PXG	O3-C3-C2	2.08	122.02	117.49
4	A	505	PXG	OP1-P-OP4	-2.04	101.31	106.73
4	A	505	PXG	C4-C3-C2	-2.01	116.97	120.06
4	A	505	PXG	C11-C10-N9	-2.01	116.81	120.97

There are no chirality outliers.

All (11) torsion outliers are listed below:

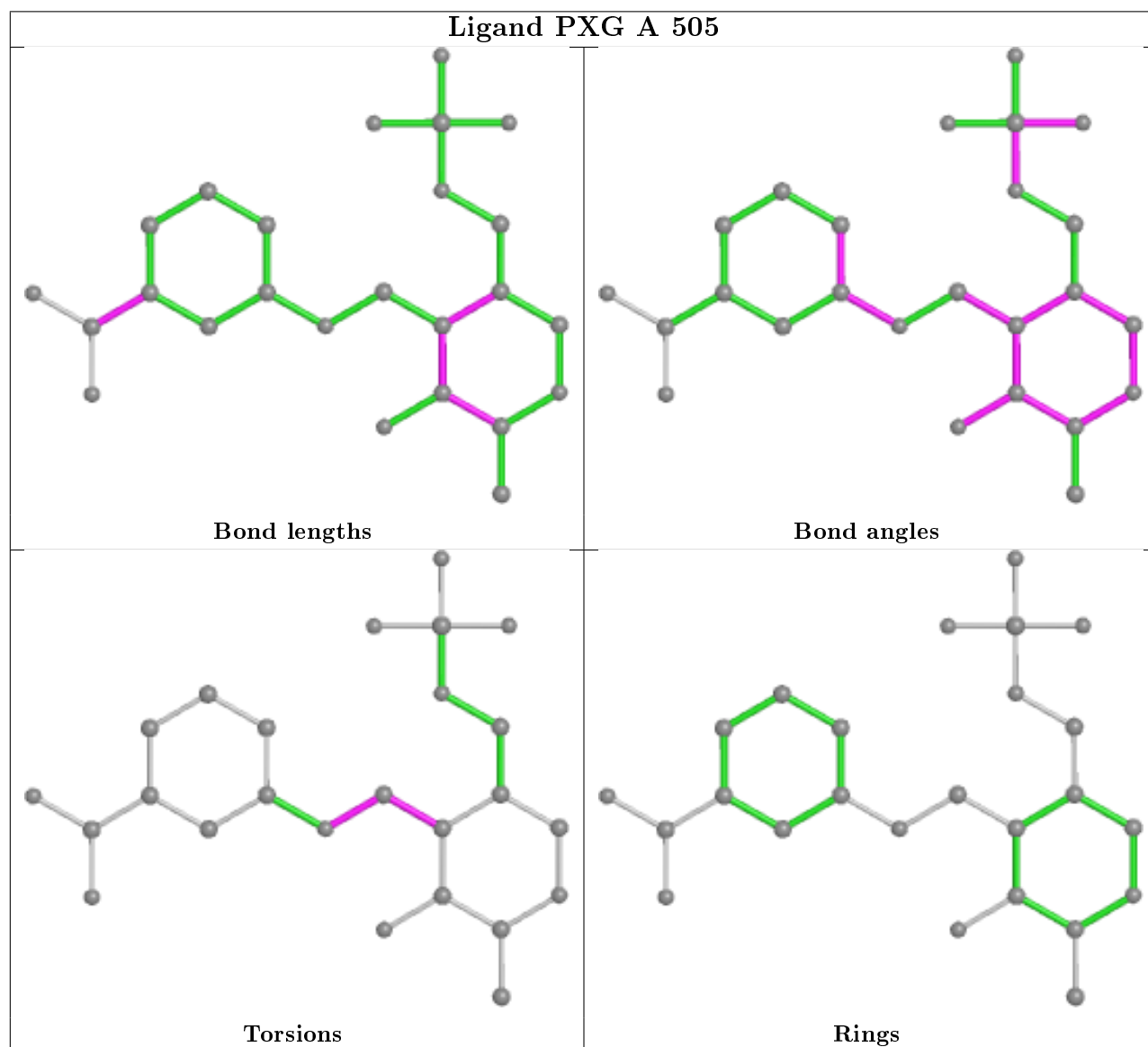
Mol	Chain	Res	Type	Atoms
3	A	504	BTB	C8-C7-N-C2
4	A	505	PXG	C5-C4-C4A-N9
4	B	508	PXG	C5-C4-C4A-N9
5	B	507	TRS	N-C-C1-O1
3	A	504	BTB	N-C7-C8-O8
4	A	505	PXG	C4-C4A-N9-C10
4	A	505	PXG	C3-C4-C4A-N9
4	B	508	PXG	C3-C4-C4A-N9
5	B	507	TRS	C2-C-C3-O3
4	B	508	PXG	C4-C4A-N9-C10
5	B	507	TRS	N-C-C3-O3

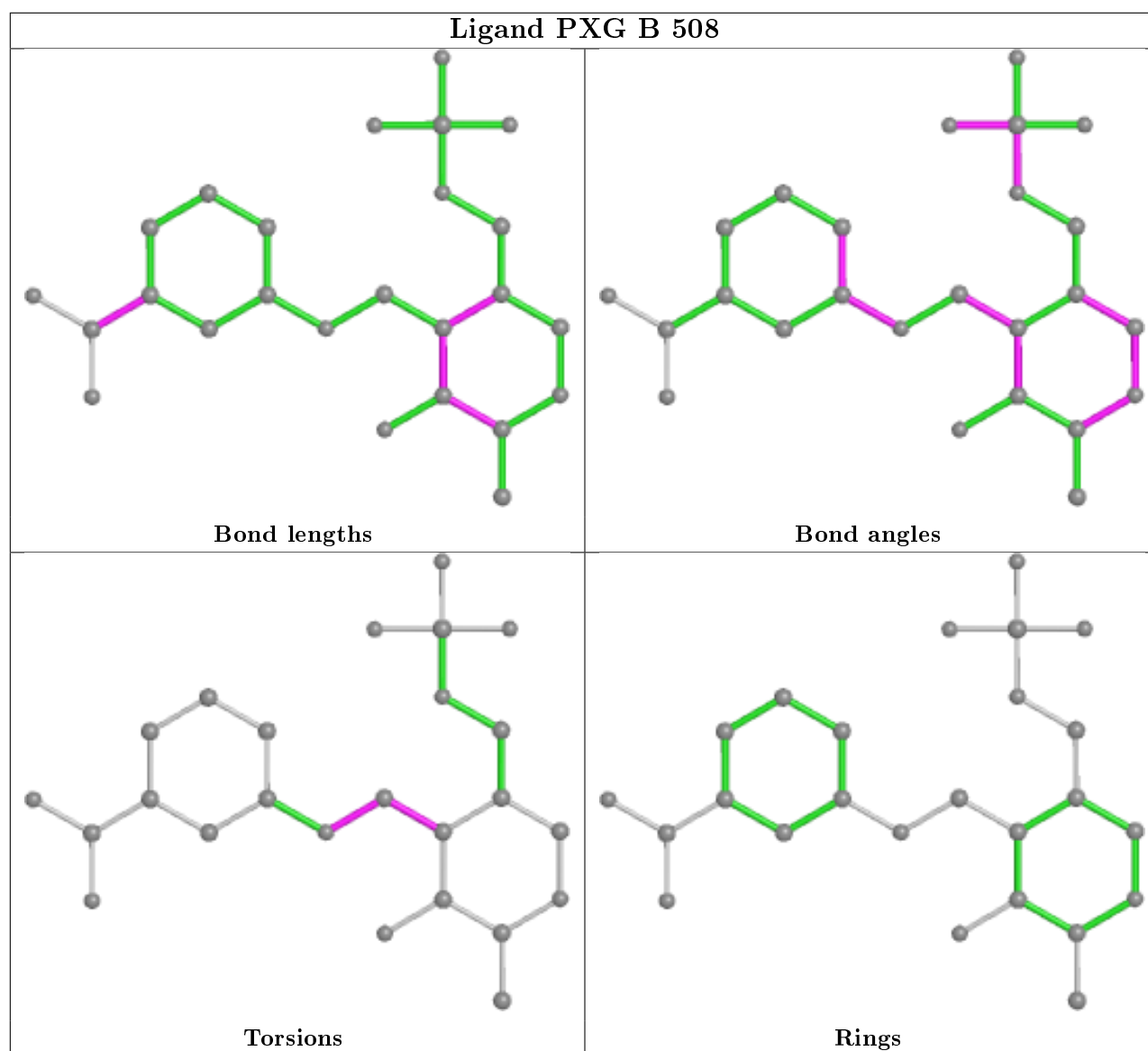
There are no ring outliers.

No monomer is involved in short contacts.

The following is a two-dimensional graphical depiction of Mogul quality analysis of bond lengths, bond angles, torsion angles, and ring geometry for all instances of the Ligand of Interest. In addition, ligands with molecular weight > 250 and outliers as shown on the validation Tables will also be included. For torsion angles, if less than 5% of the Mogul distribution of torsion angles is within 10 degrees of the torsion angle in question, then that torsion angle is considered an outlier. Any bond that is central to one or more torsion angles identified as an outlier by Mogul will be highlighted in the graph. For rings, the root-mean-square deviation (RMSD) between the ring in question and similar rings identified by Mogul is calculated over all ring torsion angles. If the average RMSD is greater than 60 degrees and the minimal RMSD between the ring in question and any Mogul-identified rings is also greater than 60 degrees, then that ring is considered an outlier.

The outliers are highlighted in purple. The color gray indicates Mogul did not find sufficient equivalents in the CSD to analyse the geometry.





## 5.7 Other polymers [i](#)

There are no such residues in this entry.

## 5.8 Polymer linkage issues [i](#)

There are no chain breaks in this entry.



## 6 Fit of model and data ⓘ

### 6.1 Protein, DNA and RNA chains ⓘ

In the following table, the column labelled ‘#RSRZ> 2’ contains the number (and percentage) of RSRZ outliers, followed by percent RSRZ outliers for the chain as percentile scores relative to all X-ray entries and entries of similar resolution. The OWAB column contains the minimum, median, 95<sup>th</sup> percentile and maximum values of the occupancy-weighted average B-factor per residue. The column labelled ‘Q< 0.9’ lists the number of (and percentage) of residues with an average occupancy less than 0.9.

Mol	Chain	Analysed	<RSRZ>	#RSRZ>2	OWAB(Å <sup>2</sup> )	Q<0.9
1	A	421/441 (95%)	0.02	13 (3%) 49 57	12, 21, 41, 56	0
1	B	421/441 (95%)	-0.06	10 (2%) 59 65	12, 19, 35, 57	0
All	All	842/882 (95%)	-0.02	23 (2%) 54 62	12, 20, 38, 57	0

All (23) RSRZ outliers are listed below:

Mol	Chain	Res	Type	RSRZ
1	A	384	ILE	4.9
1	A	52	VAL	4.8
1	A	383	ALA	4.6
1	B	360	GLY	4.6
1	A	363	PRO	3.8
1	A	32	LYS	3.7
1	A	51	PRO	3.7
1	A	405	GLY	3.6
1	B	32	LYS	3.2
1	B	437	GLU	3.2
1	A	437	GLU	3.0
1	A	382	ASP	3.0
1	B	435	VAL	2.9
1	A	360	GLY	2.7
1	A	439	ARG	2.7
1	A	30	LYS	2.7
1	A	364	TRP	2.6
1	B	438	GLU	2.5
1	B	361	LYS	2.3
1	B	30	LYS	2.3
1	B	27	ASP	2.3
1	B	439	ARG	2.1
1	B	434	ALA	2.1

## 6.2 Non-standard residues in protein, DNA, RNA chains ⓘ

There are no non-standard protein/DNA/RNA residues in this entry.

## 6.3 Carbohydrates ⓘ

There are no carbohydrates in this entry.

## 6.4 Ligands ⓘ

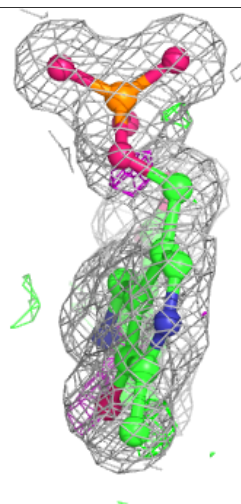
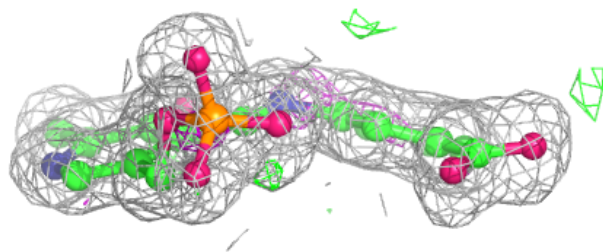
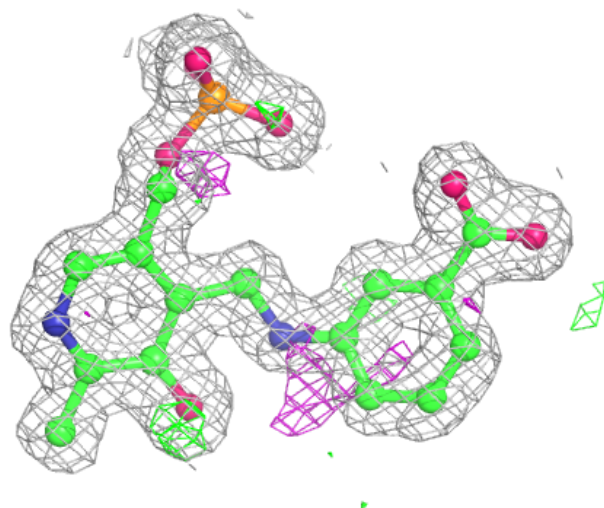
In the following table, the Atoms column lists the number of modelled atoms in the group and the number defined in the chemical component dictionary. The B-factors column lists the minimum, median, 95<sup>th</sup> percentile and maximum values of B factors of atoms in the group. The column labelled 'Q< 0.9' lists the number of atoms with occupancy less than 0.9.

Mol	Type	Chain	Res	Atoms	RSCC	RSR	B-factors( $\text{\AA}^2$ )	Q<0.9
3	BTB	A	504	12/14	0.65	0.23	52,54,56,57	0
5	TRS	B	507	8/8	0.71	0.15	54,55,56,56	0
5	TRS	B	506	7/8	0.81	0.15	55,56,57,58	0
2	SO4	B	505	5/5	0.86	0.28	56,57,59,61	0
2	SO4	B	503	5/5	0.91	0.17	52,53,54,58	0
2	SO4	A	503	5/5	0.92	0.14	45,46,51,51	0
2	SO4	A	502	5/5	0.95	0.19	27,29,35,36	0
2	SO4	A	501	5/5	0.95	0.21	58,59,60,62	0
2	SO4	B	504	5/5	0.96	0.14	48,53,54,54	0
2	SO4	B	501	5/5	0.96	0.12	51,54,55,55	0
4	PXG	A	505	25/25	0.97	0.09	12,14,22,23	0
4	PXG	B	508	25/25	0.97	0.10	13,15,23,23	0
2	SO4	B	502	5/5	0.98	0.13	26,28,30,30	0

The following is a graphical depiction of the model fit to experimental electron density of all instances of the Ligand of Interest. In addition, ligands with molecular weight > 250 and outliers as shown on the geometry validation Tables will also be included. Each fit is shown from different orientation to approximate a three-dimensional view.

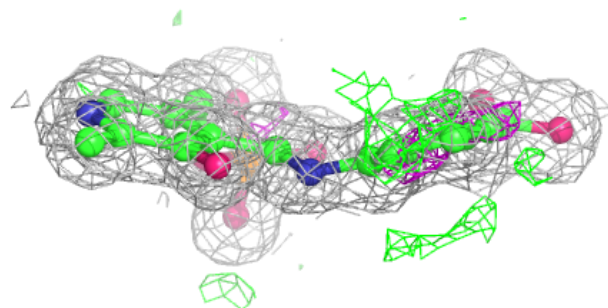
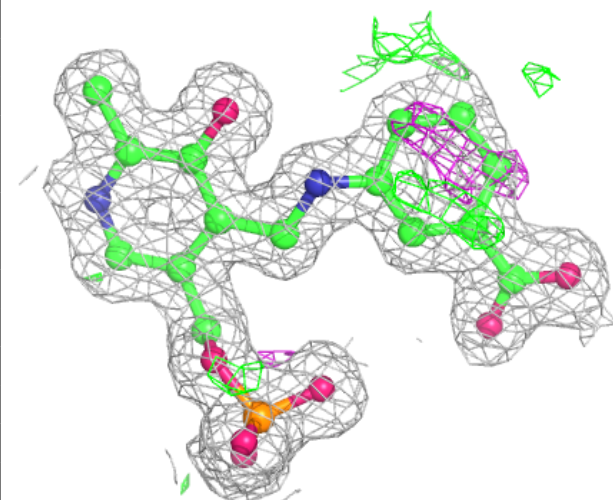
**Electron density around PXG A 505:**

$2mF_o-DF_c$  (at 0.7 rmsd) in gray  
 $mF_o-DF_c$  (at 3 rmsd) in purple (negative)  
and green (positive)



**Electron density around PXG B 508:**

$2mF_o-DF_c$  (at 0.7 rmsd) in gray  
 $mF_o-DF_c$  (at 3 rmsd) in purple (negative)  
and green (positive)



## 6.5 Other polymers [i](#)

There are no such residues in this entry.