



# Full wwPDB X-ray Structure Validation Report ⓘ

May 12, 2021 – 04:28 PM EDT

PDB ID : 4DKQ  
Title : Crystal structure of clade A/E 93TH057 HIV-1 gp120 core in complex with DMJ-I-228  
Authors : Kwon, Y.D.; LaLonde, J.M.; Jones, D.M.; Sun, A.W.; Courter, J.R.; Soeta, T.; Kobayashi, T.; Princiotta, A.M.; Wu, X.; Mascola, J.; Schon, A.; Freire, E.; Sodroski, J.; Madani, N.; Smith III, A.B.; Kwong, P.D.  
Deposited on : 2012-02-03  
Resolution : 1.89 Å(reported)

This is a Full wwPDB X-ray Structure Validation Report for a publicly released PDB entry.

We welcome your comments at [validation@mail.wwpdb.org](mailto:validation@mail.wwpdb.org)

A user guide is available at

<https://www.wwpdb.org/validation/2017/XrayValidationReportHelp>

with specific help available everywhere you see the ⓘ symbol.

---

The following versions of software and data (see [references ⓘ](#)) were used in the production of this report:

MolProbity : 4.02b-467  
Mogul : 1.8.5 (274361), CSD as541be (2020)  
Xtriage (Phenix) : 1.13  
EDS : 2.18  
buster-report : 1.1.7 (2018)  
Percentile statistics : 20191225.v01 (using entries in the PDB archive December 25th 2019)  
Refmac : 5.8.0158  
CCP4 : 7.0.044 (Gargrove)  
Ideal geometry (proteins) : Engh & Huber (2001)  
Ideal geometry (DNA, RNA) : Parkinson et al. (1996)  
Validation Pipeline (wwPDB-VP) : 2.18

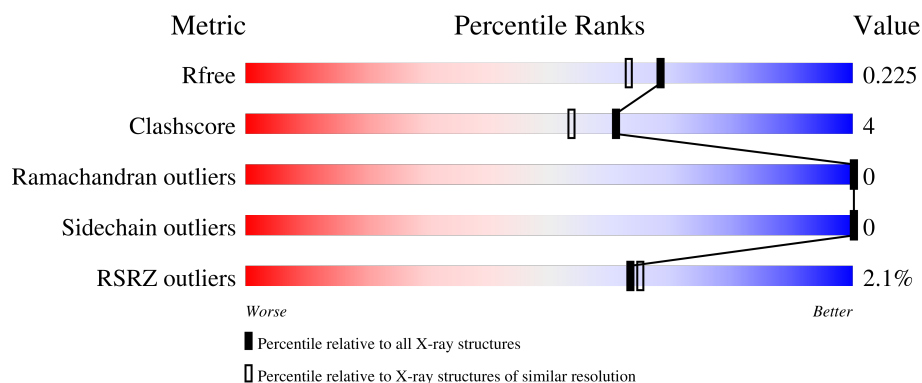
# 1 Overall quality at a glance

The following experimental techniques were used to determine the structure:

## *X-RAY DIFFRACTION*


The reported resolution of this entry is 1.89 Å.

Percentile scores (ranging between 0-100) for global validation metrics of the entry are shown in the following graphic. The table shows the number of entries on which the scores are based.



Metric	Whole archive (#Entries)	Similar resolution (#Entries, resolution range(Å))
$R_{free}$	130704	9470 (1.90-1.86)
Clashscore	141614	10282 (1.90-1.86)
Ramachandran outliers	138981	10152 (1.90-1.86)
Sidechain outliers	138945	10152 (1.90-1.86)
RSRZ outliers	127900	9303 (1.90-1.86)

The table below summarises the geometric issues observed across the polymeric chains and their fit to the electron density. The red, orange, yellow and green segments of the lower bar indicate the fraction of residues that contain outliers for  $\geq 3$ , 2, 1 and 0 types of geometric quality criteria respectively. A grey segment represents the fraction of residues that are not modelled. The numeric value for each fraction is indicated below the corresponding segment, with a dot representing fractions  $\leq 5\%$ . The upper red bar (where present) indicates the fraction of residues that have poor fit to the electron density. The numeric value is given above the bar.

Mol	Chain	Length	Quality of chain
1	A	353	

The following table lists non-polymeric compounds, carbohydrate monomers and non-standard residues in protein, DNA, RNA chains that are outliers for geometric or electron-density-fit criteria:

Mol	Type	Chain	Res	Chirality	Geometry	Clashes	Electron density
2	NAG	A	608	-	-	-	X

## 2 Entry composition [i](#)

There are 5 unique types of molecules in this entry. The entry contains 3048 atoms, of which 0 are hydrogens and 0 are deuteriums.

In the tables below, the ZeroOcc column contains the number of atoms modelled with zero occupancy, the AltConf column contains the number of residues with at least one atom in alternate conformation and the Trace column contains the number of residues modelled with at most 2 atoms.

- Molecule 1 is a protein called clade A/E 93TH057 HIV-1 gp120 core.

Mol	Chain	Residues	Atoms					ZeroOcc	AltConf	Trace
1	A	339	Total	C	N	O	S	0	0	0
			2654	1666	460	507	21			

- Molecule 2 is 2-acetamido-2-deoxy-beta-D-glucopyranose (three-letter code: NAG) (formula:  $C_8H_{15}NO_6$ ).



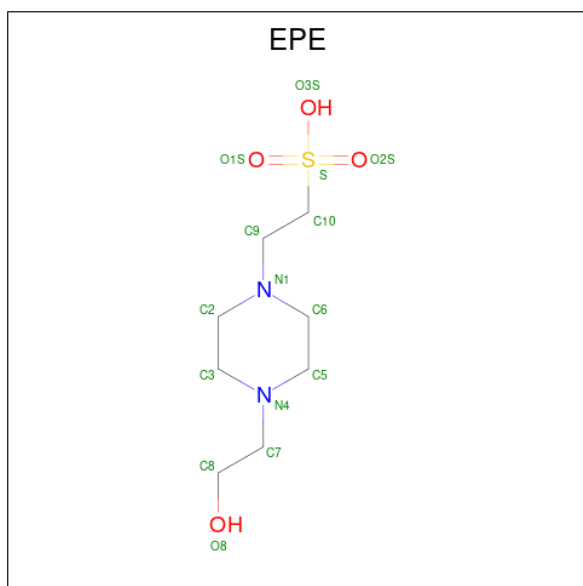
Mol	Chain	Residues	Atoms				ZeroOcc	AltConf
2	A	1	Total	C	N	O	0	0
			14	8	1	5		
2	A	1	Total	C	N	O	0	0
			14	8	1	5		
2	A	1	Total	C	N	O	0	0
			14	8	1	5		
2	A	1	Total	C	N	O	0	0
			14	8	1	5		
2	A	1	Total	C	N	O	0	0
			14	8	1	5		

*Continued on next page...*

Continued from previous page...

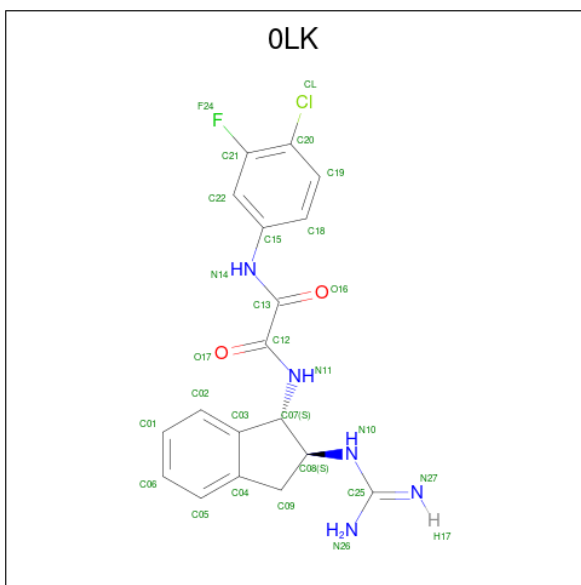
Mol	Chain	Residues	Atoms				ZeroOcc	AltConf
2	A	1	Total	C	N	O	0	0
			14	8	1	5		
2	A	1	Total	C	N	O	0	0
			14	8	1	5		
2	A	1	Total	C	N	O	0	0
			14	8	1	5		
2	A	1	Total	C	N	O	0	0
			14	8	1	5		
2	A	1	Total	C	N	O	0	0
			14	8	1	5		

- Molecule 3 is 4-(2-HYDROXYETHYL)-1-PIPERAZINE ETHANESULFONIC ACID (three-letter code: EPE) (formula: C<sub>8</sub>H<sub>18</sub>N<sub>2</sub>O<sub>4</sub>S).



Mol	Chain	Residues	Atoms					ZeroOcc	AltConf
3	A	1	Total	C	N	O	S	0	0
			15	8	2	4	1		

- Molecule 4 is N-[(1S,2S)-2-carbamimidamido-2,3-dihydro-1H-inden-1-yl]-N'-(4-chloro-3-fluorophenyl)ethanediamide (three-letter code: 0LK) (formula: C<sub>18</sub>H<sub>17</sub>ClFN<sub>5</sub>O<sub>2</sub>).



Mol	Chain	Residues	Atoms						ZeroOcc	AltConf
4	A	1	Total	C	Cl	F	N	O	0	0
			27	18	1	1	5	2		

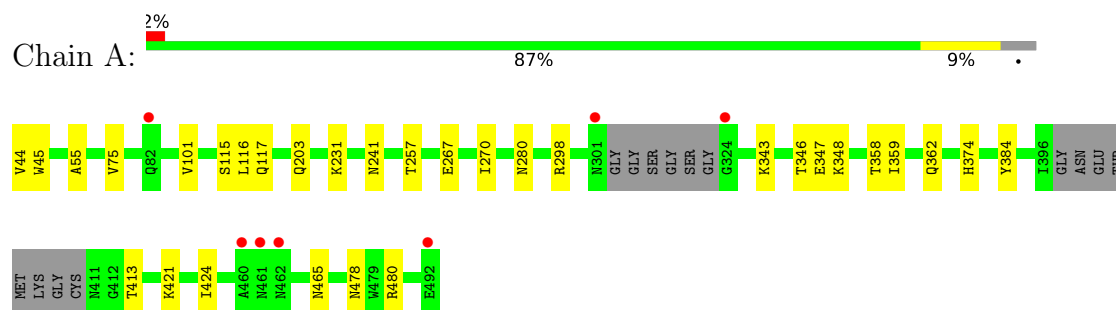
- Molecule 5 is water.

Mol	Chain	Residues	Atoms	ZeroOcc	AltConf
5	A	198	Total O 198 198	0	0

### 3 Residue-property plots [i](#)

These plots are drawn for all protein, RNA, DNA and oligosaccharide chains in the entry. The first graphic for a chain summarises the proportions of the various outlier classes displayed in the second graphic. The second graphic shows the sequence view annotated by issues in geometry and electron density. Residues are color-coded according to the number of geometric quality criteria for which they contain at least one outlier: green = 0, yellow = 1, orange = 2 and red = 3 or more. A red dot above a residue indicates a poor fit to the electron density ( $RSRZ > 2$ ). Stretches of 2 or more consecutive residues without any outlier are shown as a green connector. Residues present in the sample, but not in the model, are shown in grey.

- Molecule 1: clade A/E 93TH057 HIV-1 gp120 core



## 4 Data and refinement statistics

Property	Value	Source
Space group	P 21 21 21	Depositor
Cell constants a, b, c, $\alpha$ , $\beta$ , $\gamma$	63.74Å 67.52Å 89.25Å 90.00° 90.00° 90.00°	Depositor
Resolution (Å)	46.35 – 1.89 46.35 – 1.89	Depositor EDS
% Data completeness (in resolution range)	94.4 (46.35-1.89) 93.8 (46.35-1.89)	Depositor EDS
$R_{merge}$	0.08	Depositor
$R_{sym}$	0.09	Depositor
$\langle I/\sigma(I) \rangle$ <sup>1</sup>	0.24 (at 1.88Å)	Xtriage
Refinement program	PHENIX 1.6.4_486, REFMAC	Depositor
R, $R_{free}$	0.192 , 0.233 0.187 , 0.225	Depositor DCC
$R_{free}$ test set	1524 reflections (4.97%)	wwPDB-VP
Wilson B-factor (Å <sup>2</sup> )	27.0	Xtriage
Anisotropy	0.290	Xtriage
Bulk solvent $k_{sol}$ (e/Å <sup>3</sup> ), $B_{sol}$ (Å <sup>2</sup> )	0.38 , 47.7	EDS
L-test for twinning <sup>2</sup>	$\langle  L  \rangle = 0.48$ , $\langle L^2 \rangle = 0.32$	Xtriage
Estimated twinning fraction	No twinning to report.	Xtriage
$F_o, F_c$ correlation	0.95	EDS
Total number of atoms	3048	wwPDB-VP
Average B, all atoms (Å <sup>2</sup> )	34.0	wwPDB-VP

Xtriage's analysis on translational NCS is as follows: *The largest off-origin peak in the Patterson function is 7.08% of the height of the origin peak. No significant pseudotranslation is detected.*

<sup>1</sup>Intensities estimated from amplitudes.

<sup>2</sup>Theoretical values of  $\langle |L| \rangle$ ,  $\langle L^2 \rangle$  for acentric reflections are 0.5, 0.333 respectively for untwinned datasets, and 0.375, 0.2 for perfectly twinned datasets.

## 5 Model quality

### 5.1 Standard geometry

Bond lengths and bond angles in the following residue types are not validated in this section: EPE, NAG, OLK

The Z score for a bond length (or angle) is the number of standard deviations the observed value is removed from the expected value. A bond length (or angle) with  $|Z| > 5$  is considered an outlier worth inspection. RMSZ is the root-mean-square of all Z scores of the bond lengths (or angles).

Mol	Chain	Bond lengths		Bond angles	
		RMSZ	$\# Z  > 5$	RMSZ	$\# Z  > 5$
1	A	0.28	0/2709	0.45	0/3678

There are no bond length outliers.

There are no bond angle outliers.

There are no chirality outliers.

There are no planarity outliers.

### 5.2 Too-close contacts

In the following table, the Non-H and H(model) columns list the number of non-hydrogen atoms and hydrogen atoms in the chain respectively. The H(added) column lists the number of hydrogen atoms added and optimized by MolProbity. The Clashes column lists the number of clashes within the asymmetric unit, whereas Symm-Clashes lists symmetry-related clashes.

Mol	Chain	Non-H	H(model)	H(added)	Clashes	Symm-Clashes
1	A	2654	0	2591	23	0
2	A	154	0	143	2	0
3	A	15	0	17	1	0
4	A	27	0	16	1	0
5	A	198	0	0	4	0
All	All	3048	0	2767	25	0

The all-atom clashscore is defined as the number of clashes found per 1000 atoms (including hydrogen atoms). The all-atom clashscore for this structure is 4.

All (25) close contacts within the same asymmetric unit are listed below, sorted by their clash magnitude.



Atom-1	Atom-2	Interatomic distance (Å)	Clash overlap (Å)
1:A:231:LYS:NZ	1:A:267:GLU:OE1	2.04	0.91
1:A:358:THR:HB	1:A:465:ASN:HD22	1.46	0.79
1:A:358:THR:HB	1:A:465:ASN:ND2	2.09	0.68
1:A:280:ASN:ND2	5:A:894:HOH:O	2.24	0.67
1:A:362:GLN:NE2	5:A:881:HOH:O	2.22	0.63
1:A:257:THR:O	1:A:374:HIS:HD2	1.86	0.59
1:A:348:LYS:HD3	2:A:605:NAG:O6	2.03	0.57
1:A:298:ARG:HD2	1:A:298:ARG:C	2.27	0.54
1:A:346:THR:HG23	1:A:359:ILE:HB	1.92	0.51
1:A:241:ASN:OD1	5:A:892:HOH:O	2.20	0.49
1:A:343:LYS:O	1:A:347:GLU:HG2	2.13	0.49
1:A:384:TYR:OH	1:A:424:ILE:HG23	2.14	0.47
1:A:374:HIS:HE1	5:A:834:HOH:O	1.98	0.47
1:A:115:SER:HB2	1:A:116:LEU:HD12	1.97	0.47
1:A:270:ILE:HB	1:A:348:LYS:HG3	1.98	0.46
4:A:613:OLK:O16	4:A:613:OLK:H1	2.19	0.43
1:A:384:TYR:OH	1:A:424:ILE:HD12	2.19	0.43
1:A:413:THR:OG1	2:A:607:NAG:H81	2.19	0.43
1:A:101:VAL:HG21	1:A:480:ARG:HG3	2.02	0.42
3:A:612:EPE:H52	3:A:612:EPE:O8	2.19	0.42
1:A:117:GLN:OE1	1:A:203:GLN:NE2	2.52	0.42
1:A:55:ALA:HA	1:A:75:VAL:O	2.20	0.42
1:A:384:TYR:CE1	1:A:421:LYS:HB2	2.56	0.41
1:A:44:VAL:HG22	1:A:45:TRP:N	2.36	0.41
1:A:478:ASN:HD22	1:A:478:ASN:N	2.19	0.41

There are no symmetry-related clashes.

## 5.3 Torsion angles [i](#)

### 5.3.1 Protein backbone [i](#)

In the following table, the Percentiles column shows the percent Ramachandran outliers of the chain as a percentile score with respect to all X-ray entries followed by that with respect to entries of similar resolution.

The Analysed column shows the number of residues for which the backbone conformation was analysed, and the total number of residues.

Mol	Chain	Analysed	Favoured	Allowed	Outliers	Percentiles	
1	A	333/353 (94%)	326 (98%)	7 (2%)	0	100	100

There are no Ramachandran outliers to report.

### 5.3.2 Protein sidechains [i](#)

In the following table, the Percentiles column shows the percent sidechain outliers of the chain as a percentile score with respect to all X-ray entries followed by that with respect to entries of similar resolution.

The Analysed column shows the number of residues for which the sidechain conformation was analysed, and the total number of residues.

Mol	Chain	Analysed	Rotameric	Outliers	Percentiles	
1	A	303/311 (97%)	303 (100%)	0	100	100

There are no protein residues with a non-rotameric sidechain to report.

Sometimes sidechains can be flipped to improve hydrogen bonding and reduce clashes. All (6) such sidechains are listed below:

Mol	Chain	Res	Type
1	A	203	GLN
1	A	352	HIS
1	A	374	HIS
1	A	444	ASN
1	A	465	ASN
1	A	478	ASN

### 5.3.3 RNA [i](#)

There are no RNA molecules in this entry.

## 5.4 Non-standard residues in protein, DNA, RNA chains [i](#)

There are no non-standard protein/DNA/RNA residues in this entry.

## 5.5 Carbohydrates [i](#)

There are no monosaccharides in this entry.

## 5.6 Ligand geometry [i](#)

13 ligands are modelled in this entry.

In the following table, the Counts columns list the number of bonds (or angles) for which Mogul statistics could be retrieved, the number of bonds (or angles) that are observed in the model and the number of bonds (or angles) that are defined in the Chemical Component Dictionary. The Link column lists molecule types, if any, to which the group is linked. The Z score for a bond length (or angle) is the number of standard deviations the observed value is removed from the expected value. A bond length (or angle) with  $|Z| > 2$  is considered an outlier worth inspection. RMSZ is the root-mean-square of all Z scores of the bond lengths (or angles).

Mol	Type	Chain	Res	Link	Bond lengths			Bond angles		
					Counts	RMSZ	# Z  > 2	Counts	RMSZ	# Z  > 2
2	NAG	A	611	1	14,14,15	0.26	0	17,19,21	0.73	0
2	NAG	A	605	1	14,14,15	0.30	0	17,19,21	0.98	2 (11%)
2	NAG	A	606	1	14,14,15	0.30	0	17,19,21	0.81	0
2	NAG	A	604	1	14,14,15	0.35	0	17,19,21	0.73	0
2	NAG	A	602	1	14,14,15	0.27	0	17,19,21	0.72	0
3	EPE	A	612	-	15,15,15	2.40	4 (26%)	18,20,20	3.36	6 (33%)
2	NAG	A	607	1	14,14,15	0.33	0	17,19,21	0.67	0
2	NAG	A	610	1	14,14,15	0.26	0	17,19,21	0.80	0
4	OLK	A	613	-	28,29,29	2.95	13 (46%)	37,41,41	1.52	6 (16%)
2	NAG	A	603	1	14,14,15	0.35	0	17,19,21	1.04	1 (5%)
2	NAG	A	601	1	14,14,15	0.31	0	17,19,21	0.73	1 (5%)
2	NAG	A	609	1	14,14,15	0.31	0	17,19,21	0.65	0
2	NAG	A	608	1	14,14,15	0.54	0	17,19,21	0.69	0

In the following table, the Chirals column lists the number of chiral outliers, the number of chiral centers analysed, the number of these observed in the model and the number defined in the Chemical Component Dictionary. Similar counts are reported in the Torsion and Rings columns. '-' means no outliers of that kind were identified.

Mol	Type	Chain	Res	Link	Chirals	Torsions	Rings
2	NAG	A	611	1	-	2/6/23/26	0/1/1/1
2	NAG	A	605	1	-	0/6/23/26	0/1/1/1
2	NAG	A	606	1	-	1/6/23/26	0/1/1/1
2	NAG	A	604	1	-	0/6/23/26	0/1/1/1
2	NAG	A	602	1	-	0/6/23/26	0/1/1/1
3	EPE	A	612	-	-	0/9/19/19	0/1/1/1
2	NAG	A	607	1	-	0/6/23/26	0/1/1/1
2	NAG	A	610	1	-	3/6/23/26	0/1/1/1
4	OLK	A	613	-	-	2/16/28/28	0/3/3/3
2	NAG	A	603	1	-	0/6/23/26	0/1/1/1
2	NAG	A	601	1	-	2/6/23/26	0/1/1/1
2	NAG	A	609	1	-	0/6/23/26	0/1/1/1
2	NAG	A	608	1	-	2/6/23/26	0/1/1/1

All (17) bond length outliers are listed below:

Mol	Chain	Res	Type	Atoms	Z	Observed(Å)	Ideal(Å)
4	A	613	OLK	C07-C08	7.60	1.63	1.55
3	A	612	EPE	O1S-S	5.63	1.61	1.45
4	A	613	OLK	C19-C18	5.09	1.48	1.38
4	A	613	OLK	O16-C13	5.02	1.33	1.23
4	A	613	OLK	C07-N11	4.74	1.54	1.46
3	A	612	EPE	O2S-S	4.66	1.58	1.45
4	A	613	OLK	C08-N10	4.49	1.53	1.46
4	A	613	OLK	C03-C07	-4.45	1.47	1.51
4	A	613	OLK	C25-N10	-4.04	1.25	1.33
3	A	612	EPE	O8-C8	-3.88	1.22	1.42
4	A	613	OLK	C22-C21	3.53	1.43	1.37
3	A	612	EPE	O3S-S	3.30	1.59	1.47
4	A	613	OLK	C22-C15	3.05	1.44	1.39
4	A	613	OLK	C02-C03	-2.75	1.36	1.39
4	A	613	OLK	C15-N14	-2.20	1.37	1.41
4	A	613	OLK	C01-C02	2.09	1.43	1.38
4	A	613	OLK	C25-N27	2.08	1.40	1.32

All (16) bond angle outliers are listed below:

Mol	Chain	Res	Type	Atoms	Z	Observed(°)	Ideal(°)
3	A	612	EPE	O2S-S-C10	8.39	117.02	106.92
3	A	612	EPE	O3S-S-C10	8.23	119.08	105.77
3	A	612	EPE	O2S-S-O1S	-5.04	96.50	113.95
4	A	613	OLK	C12-C13-N14	4.23	119.00	112.31
4	A	613	OLK	O16-C13-C12	-3.89	116.55	121.30
3	A	612	EPE	O1S-S-C10	-3.48	102.72	106.92
3	A	612	EPE	O3S-S-O1S	-3.46	102.82	111.27
3	A	612	EPE	O8-C8-C7	2.43	121.25	111.19
4	A	613	OLK	C07-N11-C12	2.42	126.22	122.32
2	A	605	NAG	C2-N2-C7	-2.32	119.61	122.90
4	A	613	OLK	C15-C22-C21	2.24	120.58	118.76
2	A	603	NAG	O5-C1-C2	-2.20	107.82	111.29
4	A	613	OLK	C04-C03-C07	2.18	112.05	110.22
4	A	613	OLK	C08-C07-N11	-2.12	110.89	114.60
2	A	605	NAG	O5-C1-C2	-2.05	108.05	111.29
2	A	601	NAG	O5-C1-C2	-2.05	108.05	111.29

There are no chirality outliers.

All (12) torsion outliers are listed below:

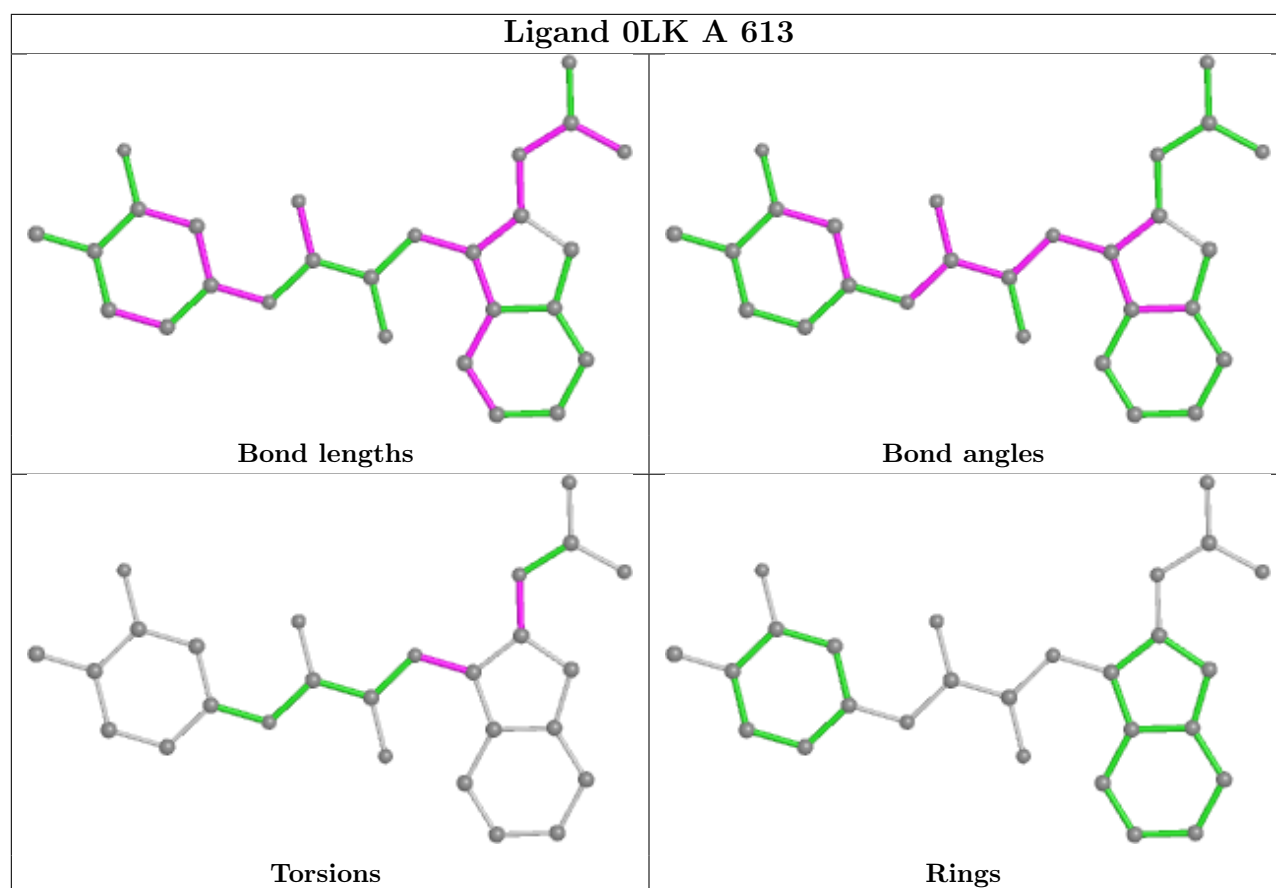
Mol	Chain	Res	Type	Atoms
4	A	613	0LK	C08-C07-N11-C12
4	A	613	0LK	C07-C08-N10-C25
2	A	608	NAG	C4-C5-C6-O6
2	A	610	NAG	C8-C7-N2-C2
2	A	610	NAG	O7-C7-N2-C2
2	A	611	NAG	C8-C7-N2-C2
2	A	611	NAG	O7-C7-N2-C2
2	A	608	NAG	O5-C5-C6-O6
2	A	610	NAG	O5-C5-C6-O6
2	A	601	NAG	C4-C5-C6-O6
2	A	601	NAG	O5-C5-C6-O6
2	A	606	NAG	C4-C5-C6-O6

There are no ring outliers.

4 monomers are involved in 4 short contacts:

Mol	Chain	Res	Type	Clashes	Symm-Clashes
2	A	605	NAG	1	0
3	A	612	EPE	1	0
2	A	607	NAG	1	0
4	A	613	0LK	1	0

The following is a two-dimensional graphical depiction of Mogul quality analysis of bond lengths, bond angles, torsion angles, and ring geometry for all instances of the Ligand of Interest. In addition, ligands with molecular weight > 250 and outliers as shown on the validation Tables will also be included. For torsion angles, if less than 5% of the Mogul distribution of torsion angles is within 10 degrees of the torsion angle in question, then that torsion angle is considered an outlier. Any bond that is central to one or more torsion angles identified as an outlier by Mogul will be highlighted in the graph. For rings, the root-mean-square deviation (RMSD) between the ring in question and similar rings identified by Mogul is calculated over all ring torsion angles. If the average RMSD is greater than 60 degrees and the minimal RMSD between the ring in question and any Mogul-identified rings is also greater than 60 degrees, then that ring is considered an outlier. The outliers are highlighted in purple. The color gray indicates Mogul did not find sufficient equivalents in the CSD to analyse the geometry.



## 5.7 Other polymers [i](#)

There are no such residues in this entry.

## 5.8 Polymer linkage issues [i](#)

There are no chain breaks in this entry.

## 6 Fit of model and data [i](#)

### 6.1 Protein, DNA and RNA chains [i](#)

In the following table, the column labelled ‘#RSRZ> 2’ contains the number (and percentage) of RSRZ outliers, followed by percent RSRZ outliers for the chain as percentile scores relative to all X-ray entries and entries of similar resolution. The OWAB column contains the minimum, median, 95<sup>th</sup> percentile and maximum values of the occupancy-weighted average B-factor per residue. The column labelled ‘Q< 0.9’ lists the number of (and percentage) of residues with an average occupancy less than 0.9.

Mol	Chain	Analysed	<RSRZ>	#RSRZ>2	OWAB(Å <sup>2</sup> )	Q<0.9
1	A	339/353 (96%)	0.04	7 (2%) 63 65	18, 30, 55, 88	0

All (7) RSRZ outliers are listed below:

Mol	Chain	Res	Type	RSRZ
1	A	492	GLU	6.5
1	A	82	GLN	4.8
1	A	324	GLY	4.2
1	A	462	ASN	3.1
1	A	460	ALA	2.8
1	A	301	ASN	2.6
1	A	461	ASN	2.6

### 6.2 Non-standard residues in protein, DNA, RNA chains [i](#)

There are no non-standard protein/DNA/RNA residues in this entry.

### 6.3 Carbohydrates [i](#)

There are no monosaccharides in this entry.

### 6.4 Ligands [i](#)

In the following table, the Atoms column lists the number of modelled atoms in the group and the number defined in the chemical component dictionary. The B-factors column lists the minimum, median, 95<sup>th</sup> percentile and maximum values of B factors of atoms in the group. The column labelled ‘Q< 0.9’ lists the number of atoms with occupancy less than 0.9.

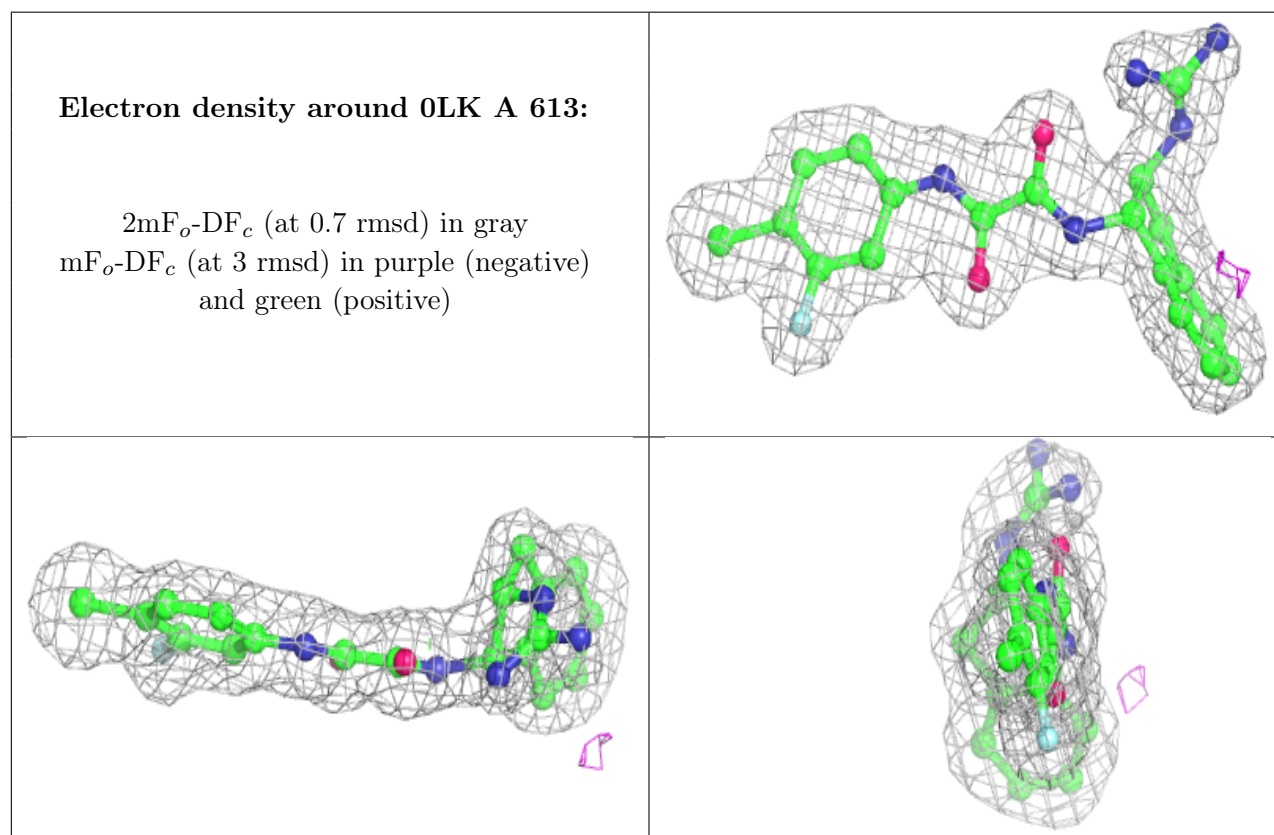
Mol	Type	Chain	Res	Atoms	RSCC	RSR	B-factors(Å <sup>2</sup> )	Q<0.9
2	NAG	A	608	14/15	0.55	0.43	27,43,67,76	0

*Continued on next page...*

Continued from previous page...

Mol	Type	Chain	Res	Atoms	RSCC	RSR	B-factors( $\text{\AA}^2$ )	Q<0.9
2	NAG	A	602	14/15	0.64	0.33	57,68,76,77	0
2	NAG	A	606	14/15	0.75	0.21	37,49,60,63	0
2	NAG	A	611	14/15	0.77	0.20	45,55,60,64	0
2	NAG	A	610	14/15	0.78	0.30	64,72,75,76	0
2	NAG	A	601	14/15	0.84	0.15	34,43,46,46	0
2	NAG	A	607	14/15	0.85	0.38	47,60,84,88	0
2	NAG	A	609	14/15	0.88	0.16	37,52,60,64	0
2	NAG	A	604	14/15	0.93	0.08	24,33,39,42	0
2	NAG	A	603	14/15	0.94	0.10	20,26,31,37	0
2	NAG	A	605	14/15	0.94	0.11	27,45,56,56	0
3	EPE	A	612	15/15	0.94	0.13	21,25,34,34	0
4	OLK	A	613	27/27	0.97	0.12	18,24,30,43	0

The following is a graphical depiction of the model fit to experimental electron density of all instances of the Ligand of Interest. In addition, ligands with molecular weight > 250 and outliers as shown on the geometry validation Tables will also be included. Each fit is shown from different orientation to approximate a three-dimensional view.



## 6.5 Other polymers ⓘ

There are no such residues in this entry.