



Full wwPDB X-ray Structure Validation Report ⓘ

Dec 8, 2020 – 10:26 AM JST

PDB ID : 7DLQ
Title : CRYSTAL STRUCTURE OF THE COMPLEX OF LACTOPEROXIDASE
WITH HYDROGEN PEROXIDE AT 1.77Å RESOLUTION
Authors : Singh, P.K.; Sharma, P.; Bhushan, A.; Sharma, S.; Singh, T.P.
Deposited on : 2020-11-29
Resolution : 1.77 Å(reported)

This is a Full wwPDB X-ray Structure Validation Report for a publicly released PDB entry.

We welcome your comments at validation@mail.wwpdb.org

A user guide is available at

<https://www.wwpdb.org/validation/2017/XrayValidationReportHelp>

with specific help available everywhere you see the ⓘ symbol.

The following versions of software and data (see [references ⓘ](#)) were used in the production of this report:

MolProbity : 4.02b-467
Mogul : 1.8.5 (274361), CSD as541be (2020)
Xtriage (Phenix) : 1.13
EDS : 2.15.1
buster-report : 1.1.7 (2018)
Percentile statistics : 20191225.v01 (using entries in the PDB archive December 25th 2019)
Refmac : 5.8.0158
CCP4 : 7.0.044 (Gargrove)
Ideal geometry (proteins) : Engh & Huber (2001)
Ideal geometry (DNA, RNA) : Parkinson et al. (1996)
Validation Pipeline (wwPDB-VP) : 2.15.1

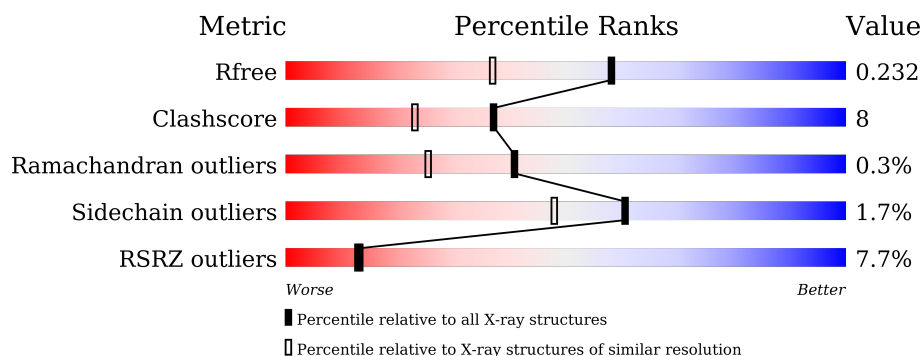
1 Overall quality at a glance

The following experimental techniques were used to determine the structure:

X-RAY DIFFRACTION

The reported resolution of this entry is 1.77 Å.

Percentile scores (ranging between 0-100) for global validation metrics of the entry are shown in the following graphic. The table shows the number of entries on which the scores are based.



Metric	Whole archive (#Entries)	Similar resolution (#Entries, resolution range(Å))
R_{free}	130704	9185 (1.80-1.76)
Clashscore	141614	10184 (1.80-1.76)
Ramachandran outliers	138981	10051 (1.80-1.76)
Sidechain outliers	138945	10050 (1.80-1.76)
RSRZ outliers	127900	9032 (1.80-1.76)

The table below summarises the geometric issues observed across the polymeric chains and their fit to the electron density. The red, orange, yellow and green segments of the lower bar indicate the fraction of residues that contain outliers for ≥ 3 , 2, 1 and 0 types of geometric quality criteria respectively. A grey segment represents the fraction of residues that are not modelled. The numeric value for each fraction is indicated below the corresponding segment, with a dot representing fractions $\leq 5\%$. The upper red bar (where present) indicates the fraction of residues that have poor fit to the electron density. The numeric value is given above the bar.

Mol	Chain	Length	Quality of chain
1	A	595	
2	B	2	
2	C	2	

The following table lists non-polymeric compounds, carbohydrate monomers and non-standard residues in protein, DNA, RNA chains that are outliers for geometric or electron-density-fit criteria:

Mol	Type	Chain	Res	Chirality	Geometry	Clashes	Electron density
10	OSM	A	617	-	-	X	-
10	OSM	A	619	-	-	X	-
11	PEO	A	627	-	-	X	-
2	NAG	B	2	-	-	-	X

2 Entry composition [i](#)

There are 12 unique types of molecules in this entry. The entry contains 5585 atoms, of which 0 are hydrogens and 0 are deuteriums.

In the tables below, the ZeroOcc column contains the number of atoms modelled with zero occupancy, the AltConf column contains the number of residues with at least one atom in alternate conformation and the Trace column contains the number of residues modelled with at most 2 atoms.

- Molecule 1 is a protein called Lactoperoxidase.

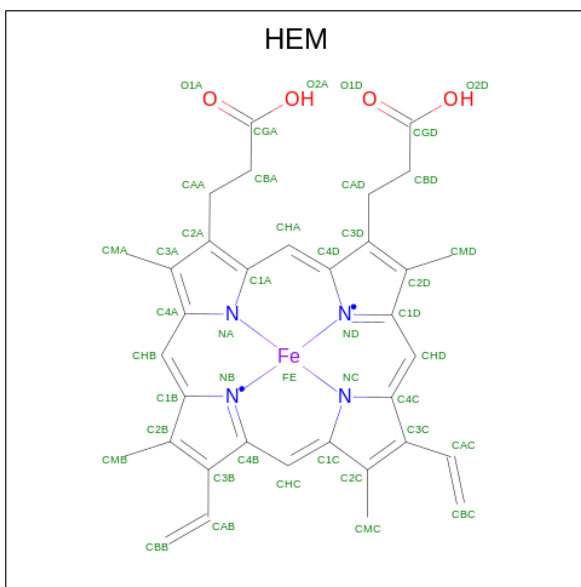
Mol	Chain	Residues	Atoms					ZeroOcc	AltConf	Trace
1	A	595	Total	C	N	O	S	0	0	0
			4770	3037	847	860	26			

- Molecule 2 is an oligosaccharide called 2-acetamido-2-deoxy-beta-D-glucopyranose-(1-4)-2-acetamido-2-deoxy-beta-D-glucopyranose.



Mol	Chain	Residues	Atoms				ZeroOcc	AltConf	Trace
2	B	2	Total	C	N	O	0	0	0
			28	16	2	10			
2	C	2	Total	C	N	O	0	0	0
			28	16	2	10			

- Molecule 3 is PROTOPORPHYRIN IX CONTAINING FE (three-letter code: HEM) (formula: C₃₄H₃₂FeN₄O₄) (labeled as "Ligand of Interest" by depositor).

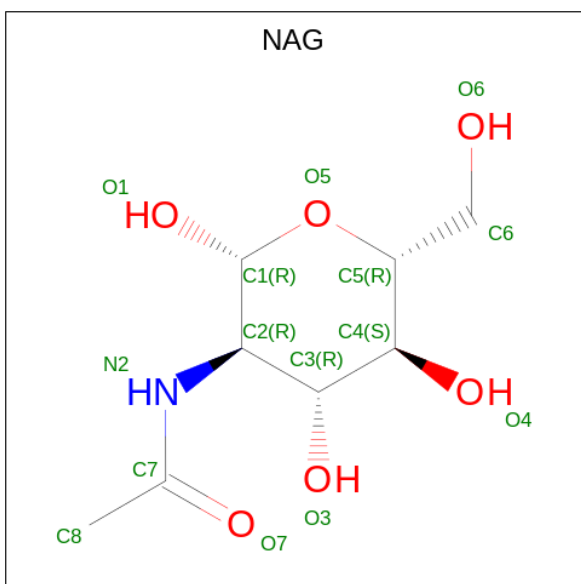


Mol	Chain	Residues	Atoms				ZeroOcc	AltConf
3	A	1	Total	C	Fe	N	O	
			43	34	1	4	4	

- Molecule 4 is CALCIUM ION (three-letter code: CA) (formula: Ca).

Mol	Chain	Residues	Atoms		ZeroOcc	AltConf
4	A	1	Total	Ca		
			1	1	0	0

- Molecule 5 is 2-acetamido-2-deoxy-beta-D-glucopyranose (three-letter code: NAG) (formula: C₈H₁₅NO₆).

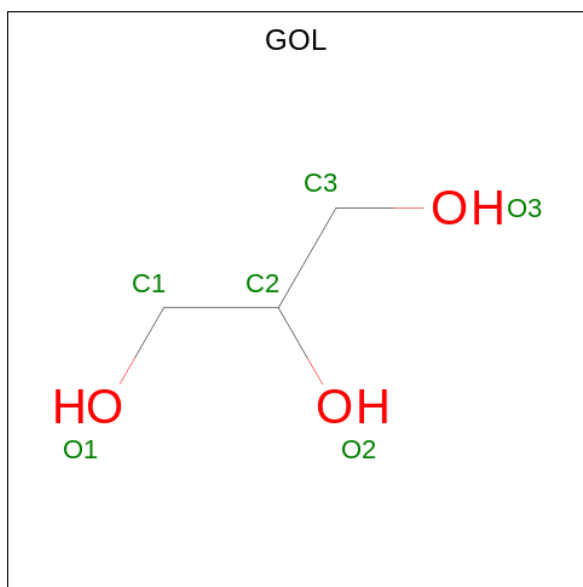


Mol	Chain	Residues	Atoms				ZeroOcc	AltConf
5	A	1	Total	C	N	O	0	0
			14	8	1	5		

- Molecule 6 is IODIDE ION (three-letter code: IOD) (formula: I).

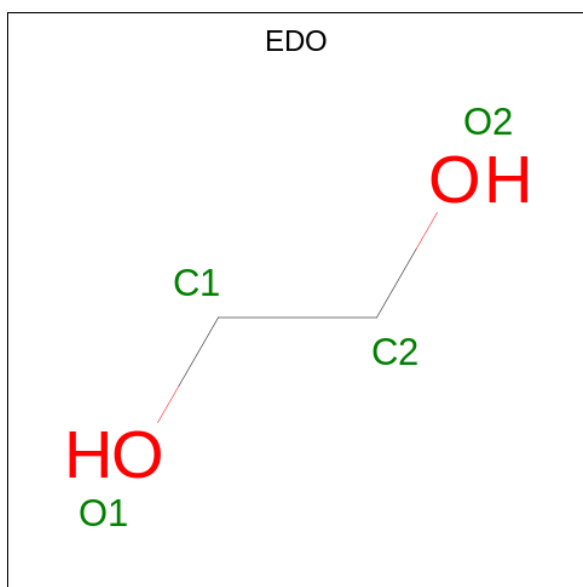
Mol	Chain	Residues	Atoms		ZeroOcc	AltConf
6	A	19	Total	I	0	0
			19	19		

- Molecule 7 is GLYCEROL (three-letter code: GOL) (formula: C₃H₈O₃).



Mol	Chain	Residues	Atoms			ZeroOcc	AltConf
7	A	1	Total	C	O	0	0
			6	3	3		

- Molecule 8 is 1,2-ETHANEDIOL (three-letter code: EDO) (formula: C₂H₆O₂).

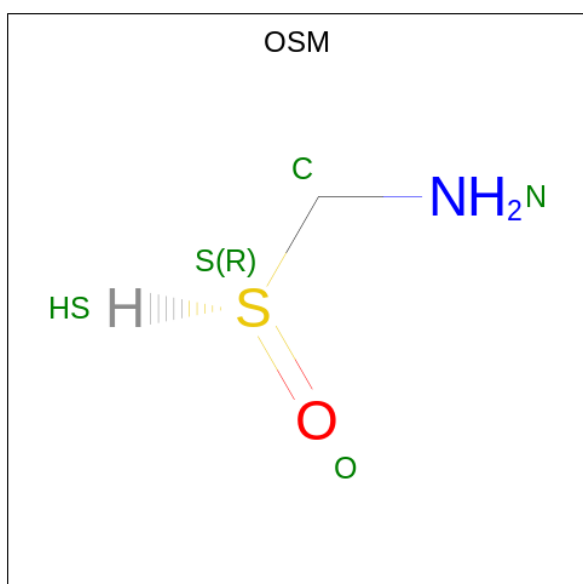


Mol	Chain	Residues	Atoms			ZeroOcc	AltConf
8	A	1	Total	C	O	0	0
			4	2	2		

- Molecule 9 is ZINC ION (three-letter code: ZN) (formula: Zn).

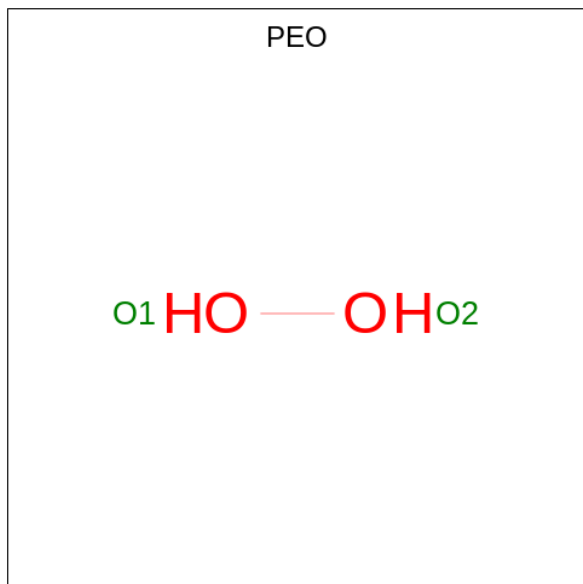
Mol	Chain	Residues	Atoms		ZeroOcc	AltConf
9	A	1	Total	Zn	0	0
			1	1		

- Molecule 10 is 1-(OXIDOSULFANYL)METHANAMINE (three-letter code: OSM) (formula: CH₅NOS).



Mol	Chain	Residues	Atoms	ZeroOcc	AltConf
10	A	1	Total C N O S 4 1 1 1 1	0	0
10	A	1	Total C N O S 4 1 1 1 1	0	0
10	A	1	Total C N O S 4 1 1 1 1	0	0

- Molecule 11 is HYDROGEN PEROXIDE (three-letter code: PEO) (formula: H₂O₂).



Mol	Chain	Residues	Atoms	ZeroOcc	AltConf
11	A	1	Total O 2 2	0	0

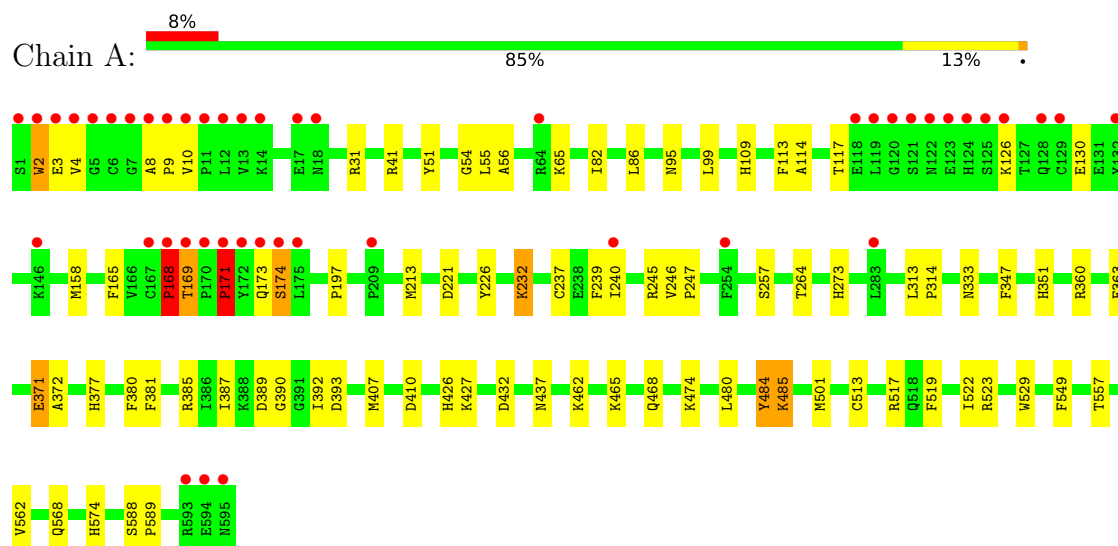
- Molecule 12 is water.

Mol	Chain	Residues	Atoms	ZeroOcc	AltConf
12	A	657	Total O 657 657	0	0

3 Residue-property plots

These plots are drawn for all protein, RNA, DNA and oligosaccharide chains in the entry. The first graphic for a chain summarises the proportions of the various outlier classes displayed in the second graphic. The second graphic shows the sequence view annotated by issues in geometry and electron density. Residues are color-coded according to the number of geometric quality criteria for which they contain at least one outlier: green = 0, yellow = 1, orange = 2 and red = 3 or more. A red dot above a residue indicates a poor fit to the electron density ($RSRZ > 2$). Stretches of 2 or more consecutive residues without any outlier are shown as a green connector. Residues present in the sample, but not in the model, are shown in grey.

• Molecule 1: Lactoperoxidase



• Molecule 2: 2-acetamido-2-deoxy-beta-D-glucopyranose-(1-4)-2-acetamido-2-deoxy-beta-D-glucopyranose



• Molecule 2: 2-acetamido-2-deoxy-beta-D-glucopyranose-(1-4)-2-acetamido-2-deoxy-beta-D-glucopyranose



4 Data and refinement statistics

Property	Value	Source
Space group	P 1 21 1	Depositor
Cell constants a, b, c, α , β , γ	54.23Å 79.84Å 77.55Å 90.00° 102.67° 90.00°	Depositor
Resolution (Å)	34.57 – 1.77 34.57 – 1.77	Depositor EDS
% Data completeness (in resolution range)	98.2 (34.57-1.77) 98.2 (34.57-1.77)	Depositor EDS
R_{merge}	(Not available)	Depositor
R_{sym}	0.06	Depositor
$\langle I/\sigma(I) \rangle$ ¹	3.08 (at 1.77Å)	Xtriage
Refinement program	REFMAC 5.8.0267	Depositor
R, R_{free}	0.187 , 0.226 0.194 , 0.232	Depositor DCC
R_{free} test set	3107 reflections (5.05%)	wwPDB-VP
Wilson B-factor (Å ²)	22.3	Xtriage
Anisotropy	0.101	Xtriage
Bulk solvent k_{sol} (e/Å ³), B_{sol} (Å ²)	0.30 , 44.5	EDS
L-test for twinning ²	$\langle L \rangle = 0.49$, $\langle L^2 \rangle = 0.32$	Xtriage
Estimated twinning fraction	No twinning to report.	Xtriage
F_o, F_c correlation	0.95	EDS
Total number of atoms	5585	wwPDB-VP
Average B, all atoms (Å ²)	34.0	wwPDB-VP

Xtriage's analysis on translational NCS is as follows: *The largest off-origin peak in the Patterson function is 5.02% of the height of the origin peak. No significant pseudotranslation is detected.*

¹Intensities estimated from amplitudes.

²Theoretical values of $\langle |L| \rangle$, $\langle L^2 \rangle$ for acentric reflections are 0.5, 0.333 respectively for untwinned datasets, and 0.375, 0.2 for perfectly twinned datasets.

5 Model quality

5.1 Standard geometry

Bond lengths and bond angles in the following residue types are not validated in this section: GOL, ZN, NAG, CA, EDO, PEO, OSM, HEM, IOD

The Z score for a bond length (or angle) is the number of standard deviations the observed value is removed from the expected value. A bond length (or angle) with $|Z| > 5$ is considered an outlier worth inspection. RMSZ is the root-mean-square of all Z scores of the bond lengths (or angles).

Mol	Chain	Bond lengths		Bond angles	
		RMSZ	$\# Z > 5$	RMSZ	$\# Z > 5$
1	A	0.76	3/4898 (0.1%)	0.94	15/6645 (0.2%)

All (3) bond length outliers are listed below:

Mol	Chain	Res	Type	Atoms	Z	Observed(Å)	Ideal(Å)
1	A	114	ALA	CA-CB	-7.90	1.35	1.52
1	A	113	PHE	CA-CB	6.28	1.67	1.53
1	A	562	VAL	C-N	-6.10	1.22	1.34

All (15) bond angle outliers are listed below:

Mol	Chain	Res	Type	Atoms	Z	Observed(°)	Ideal(°)
1	A	240	ILE	CB-CA-C	8.99	129.58	111.60
1	A	168	PRO	CA-N-CD	-8.88	99.07	111.50
1	A	426	HIS	CB-CA-C	8.62	127.63	110.40
1	A	168	PRO	CB-CA-C	7.56	130.89	112.00
1	A	114	ALA	N-CA-C	-7.27	91.38	111.00
1	A	114	ALA	CB-CA-C	7.24	120.97	110.10
1	A	484	TYR	CB-CA-C	7.18	124.77	110.40
1	A	174	SER	CB-CA-C	5.93	121.37	110.10
1	A	114	ALA	N-CA-CB	5.66	118.02	110.10
1	A	56	ALA	N-CA-CB	-5.62	102.23	110.10
1	A	371	GLU	N-CA-C	-5.38	96.49	111.00
1	A	372	ALA	N-CA-CB	5.37	117.62	110.10
1	A	390	GLY	N-CA-C	5.25	126.23	113.10
1	A	171	PRO	N-CA-CB	-5.09	97.00	102.60
1	A	485	LYS	CB-CA-C	-5.03	100.35	110.40

There are no chirality outliers.

There are no planarity outliers.

5.2 Too-close contacts ⓘ

In the following table, the Non-H and H(model) columns list the number of non-hydrogen atoms and hydrogen atoms in the chain respectively. The H(added) column lists the number of hydrogen atoms added and optimized by MolProbity. The Clashes column lists the number of clashes within the asymmetric unit, whereas Symm-Clashes lists symmetry-related clashes.

Mol	Chain	Non-H	H(model)	H(added)	Clashes	Symm-Clashes
1	A	4770	0	4689	70	0
2	B	28	0	25	0	0
2	C	28	0	25	0	0
3	A	43	0	30	1	0
4	A	1	0	0	0	0
5	A	14	0	13	0	0
6	A	19	0	0	6	0
7	A	6	0	8	2	0
8	A	4	0	4	1	0
9	A	1	0	0	0	0
10	A	12	0	13	5	0
11	A	2	0	0	2	0
12	A	657	0	0	20	0
All	All	5585	0	4807	76	0

The all-atom clashscore is defined as the number of clashes found per 1000 atoms (including hydrogen atoms). The all-atom clashscore for this structure is 8.

All (76) close contacts within the same asymmetric unit are listed below, sorted by their clash magnitude.

Atom-1	Atom-2	Interatomic distance (Å)	Clash overlap (Å)
1:A:165:PHE:CZ	1:A:169:THR:O	1.90	1.25
1:A:3:GLU:HG2	1:A:174:SER:OG	1.41	1.19
1:A:333:ASN:HD22	10:A:619:OSM:HS	1.05	0.96
1:A:109:HIS:NE2	11:A:627:PEO:O1	2.04	0.90
1:A:165:PHE:HZ	1:A:169:THR:O	1.56	0.89
1:A:173:GLN:OE1	12:A:702:HOH:O	1.92	0.86
6:A:622:IOD:I	12:A:1339:HOH:O	2.63	0.85
6:A:623:IOD:I	12:A:1198:HOH:O	2.65	0.84
1:A:351:HIS:HD1	1:A:437:ASN:HD21	1.27	0.79
1:A:169:THR:HG21	12:A:1029:HOH:O	1.84	0.77
1:A:410:ASP:OD1	12:A:703:HOH:O	2.02	0.77
1:A:117:THR:HG22	1:A:169:THR:CG2	2.18	0.73
1:A:126:LYS:O	12:A:704:HOH:O	2.06	0.72
1:A:65:LYS:NZ	12:A:708:HOH:O	2.25	0.70

Continued on next page...

Continued from previous page...

Atom-1	Atom-2	Interatomic distance (Å)	Clash overlap (Å)
1:A:3:GLU:CG	1:A:174:SER:OG	2.33	0.68
1:A:117:THR:HG22	1:A:169:THR:HG22	1.74	0.67
1:A:3:GLU:HG2	1:A:174:SER:HG	1.58	0.64
1:A:3:GLU:HG2	1:A:174:SER:CB	2.28	0.63
10:A:617:OSM:H2	12:A:860:HOH:O	1.97	0.62
6:A:620:IOD:I	11:A:627:PEO:O1	2.88	0.62
1:A:10:VAL:O	1:A:10:VAL:HG12	2.02	0.59
1:A:86:LEU:O	12:A:705:HOH:O	2.17	0.59
1:A:245:ARG:NH2	12:A:715:HOH:O	2.35	0.59
1:A:51:TYR:CD2	1:A:55:LEU:O	2.56	0.59
1:A:221:ASP:HB2	1:A:226:TYR:CZ	2.39	0.57
1:A:117:THR:HG22	1:A:169:THR:HG21	1.86	0.57
1:A:41:ARG:NH1	12:A:716:HOH:O	2.36	0.57
1:A:385:ARG:O	1:A:389:ASP:HB3	2.05	0.57
1:A:333:ASN:ND2	10:A:619:OSM:S	2.76	0.57
1:A:2:TRP:HE3	1:A:2:TRP:O	1.89	0.55
1:A:8:ALA:HB3	1:A:9:PRO:HD3	1.89	0.55
1:A:165:PHE:CE1	1:A:169:THR:O	2.56	0.55
1:A:197:PRO:HD2	6:A:625:IOD:I	2.78	0.54
1:A:232:LYS:NZ	10:A:617:OSM:HS	2.06	0.53
1:A:393:ASP:OD1	1:A:557:THR:HB	2.09	0.53
1:A:377:HIS:HA	1:A:380:PHE:CE2	2.44	0.52
1:A:3:GLU:CG	1:A:174:SER:CB	2.87	0.52
1:A:462:LYS:HD2	12:A:768:HOH:O	2.09	0.52
1:A:237:CYS:HA	1:A:381:PHE:O	2.11	0.51
1:A:363:GLU:H	8:A:615:EDO:H21	1.76	0.51
1:A:99:LEU:HD21	1:A:549:PHE:CD1	2.46	0.51
1:A:232:LYS:HZ2	10:A:617:OSM:HS	1.58	0.50
1:A:8:ALA:N	1:A:9:PRO:CD	2.75	0.49
1:A:523:ARG:HG3	1:A:529:TRP:CE2	2.47	0.49
1:A:568:GLN:HG3	12:A:1064:HOH:O	2.12	0.49
1:A:574:HIS:O	12:A:706:HOH:O	2.20	0.48
1:A:54:GLY:HA2	12:A:1092:HOH:O	2.14	0.47
3:A:601:HEM:HMC2	3:A:601:HEM:HBC2	1.96	0.47
1:A:360:ARG:NH2	1:A:371:GLU:O	2.41	0.46
1:A:257:SER:O	1:A:381:PHE:HA	2.16	0.46
1:A:484:TYR:O	1:A:485:LYS:CB	2.63	0.46
1:A:239:PHE:HZ	1:A:427:LYS:HB3	1.82	0.45
1:A:377:HIS:CD2	7:A:614:GOL:H2	2.52	0.45
1:A:377:HIS:HD2	7:A:614:GOL:H2	1.82	0.44
1:A:517:ARG:NE	12:A:737:HOH:O	2.45	0.43

Continued on next page...

Continued from previous page...

Atom-1	Atom-2	Interatomic distance (Å)	Clash overlap (Å)
1:A:239:PHE:CZ	1:A:427:LYS:HB3	2.53	0.43
1:A:31:ARG:HD2	6:A:613:IOD:I	2.88	0.43
1:A:246:VAL:HG11	1:A:387:ILE:HG13	1.99	0.43
1:A:158:MET:HE1	1:A:432:ASP:H	1.83	0.43
1:A:313:LEU:N	1:A:314:PRO:CD	2.82	0.42
1:A:130:GLU:HB2	12:A:704:HOH:O	2.19	0.42
1:A:213:MET:HG2	1:A:273:HIS:CD2	2.55	0.42
1:A:246:VAL:HA	1:A:247:PRO:HD3	1.93	0.42
1:A:407:MET:HB3	1:A:501:MET:CE	2.50	0.42
1:A:484:TYR:O	1:A:485:LYS:HB2	2.19	0.42
1:A:169:THR:CG2	12:A:1029:HOH:O	2.58	0.42
1:A:2:TRP:O	1:A:2:TRP:CE3	2.70	0.42
1:A:588:SER:OG	1:A:589:PRO:HD3	2.21	0.41
1:A:82:ILE:HD13	1:A:480:LEU:HD23	2.03	0.41
1:A:519:PHE:O	1:A:522:ILE:HG13	2.21	0.41
1:A:468:GLN:HG2	1:A:474:LYS:HA	2.03	0.41
1:A:484:TYR:O	1:A:485:LYS:HG2	2.21	0.41
1:A:264:THR:HG23	1:A:392:ILE:HB	2.03	0.41
1:A:465:LYS:NZ	12:A:736:HOH:O	2.45	0.41
1:A:588:SER:N	1:A:589:PRO:CD	2.84	0.41
6:A:612:IOD:I	12:A:1235:HOH:O	2.93	0.40

There are no symmetry-related clashes.

5.3 Torsion angles

5.3.1 Protein backbone

In the following table, the Percentiles column shows the percent Ramachandran outliers of the chain as a percentile score with respect to all X-ray entries followed by that with respect to entries of similar resolution.

The Analysed column shows the number of residues for which the backbone conformation was analysed, and the total number of residues.

Mol	Chain	Analysed	Favoured	Allowed	Outliers	Percentiles
1	A	593/595 (100%)	578 (98%)	13 (2%)	2 (0%)	41 25

All (2) Ramachandran outliers are listed below:

Mol	Chain	Res	Type
1	A	168	PRO
1	A	171	PRO

5.3.2 Protein sidechains [i](#)

In the following table, the Percentiles column shows the percent sidechain outliers of the chain as a percentile score with respect to all X-ray entries followed by that with respect to entries of similar resolution.

The Analysed column shows the number of residues for which the sidechain conformation was analysed, and the total number of residues.

Mol	Chain	Analysed	Rotameric	Outliers	Percentiles	
1	A	518/518 (100%)	509 (98%)	9 (2%)	60	48

All (9) residues with a non-rotameric sidechain are listed below:

Mol	Chain	Res	Type
1	A	2	TRP
1	A	4	VAL
1	A	95	ASN
1	A	168	PRO
1	A	169	THR
1	A	171	PRO
1	A	232	LYS
1	A	347	PHE
1	A	513	CYS

Sometimes sidechains can be flipped to improve hydrogen bonding and reduce clashes. All (4) such sidechains are listed below:

Mol	Chain	Res	Type
1	A	122	ASN
1	A	128	GLN
1	A	147	ASN
1	A	173	GLN

5.3.3 RNA [i](#)

There are no RNA molecules in this entry.

5.4 Non-standard residues in protein, DNA, RNA chains ⓘ

There are no non-standard protein/DNA/RNA residues in this entry.

5.5 Carbohydrates ⓘ

4 monosaccharides are modelled in this entry.

In the following table, the Counts columns list the number of bonds (or angles) for which Mogul statistics could be retrieved, the number of bonds (or angles) that are observed in the model and the number of bonds (or angles) that are defined in the Chemical Component Dictionary. The Link column lists molecule types, if any, to which the group is linked. The Z score for a bond length (or angle) is the number of standard deviations the observed value is removed from the expected value. A bond length (or angle) with $|Z| > 2$ is considered an outlier worth inspection. RMSZ is the root-mean-square of all Z scores of the bond lengths (or angles).

Mol	Type	Chain	Res	Link	Bond lengths			Bond angles		
					Counts	RMSZ	# $ Z > 2$	Counts	RMSZ	# $ Z > 2$
2	NAG	B	1	1,2	14,14,15	0.94	0	17,19,21	1.60	4 (23%)
2	NAG	B	2	2	14,14,15	0.55	0	17,19,21	1.20	2 (11%)
2	NAG	C	1	1,2	14,14,15	0.93	0	17,19,21	1.07	0
2	NAG	C	2	2	14,14,15	0.51	0	17,19,21	2.62	6 (35%)

In the following table, the Chirals column lists the number of chiral outliers, the number of chiral centers analysed, the number of these observed in the model and the number defined in the Chemical Component Dictionary. Similar counts are reported in the Torsion and Rings columns. '-' means no outliers of that kind were identified.

Mol	Type	Chain	Res	Link	Chirals	Torsions	Rings
2	NAG	B	1	1,2	-	0/6/23/26	0/1/1/1
2	NAG	B	2	2	-	2/6/23/26	0/1/1/1
2	NAG	C	1	1,2	-	2/6/23/26	0/1/1/1
2	NAG	C	2	2	-	2/6/23/26	0/1/1/1

There are no bond length outliers.

All (12) bond angle outliers are listed below:

Mol	Chain	Res	Type	Atoms	Z	Observed(°)	Ideal(°)
2	C	2	NAG	C1-O5-C5	6.85	121.47	112.19
2	C	2	NAG	C4-C3-C2	-5.52	102.93	111.02
2	C	2	NAG	O5-C1-C2	-3.64	105.53	111.29
2	B	1	NAG	O5-C5-C6	-3.12	102.31	107.20
2	B	2	NAG	C1-O5-C5	2.96	116.20	112.19

Continued on next page...

Continued from previous page...

Mol	Chain	Res	Type	Atoms	Z	Observed(°)	Ideal(°)
2	B	1	NAG	O4-C4-C5	2.93	116.57	109.30
2	B	1	NAG	C1-O5-C5	-2.61	108.65	112.19
2	C	2	NAG	C2-N2-C7	-2.55	119.27	122.90
2	C	2	NAG	O3-C3-C2	2.54	114.72	109.47
2	B	1	NAG	C6-C5-C4	2.25	118.28	113.00
2	C	2	NAG	C1-C2-N2	2.17	114.20	110.49
2	B	2	NAG	C4-C3-C2	2.14	114.15	111.02

There are no chirality outliers.

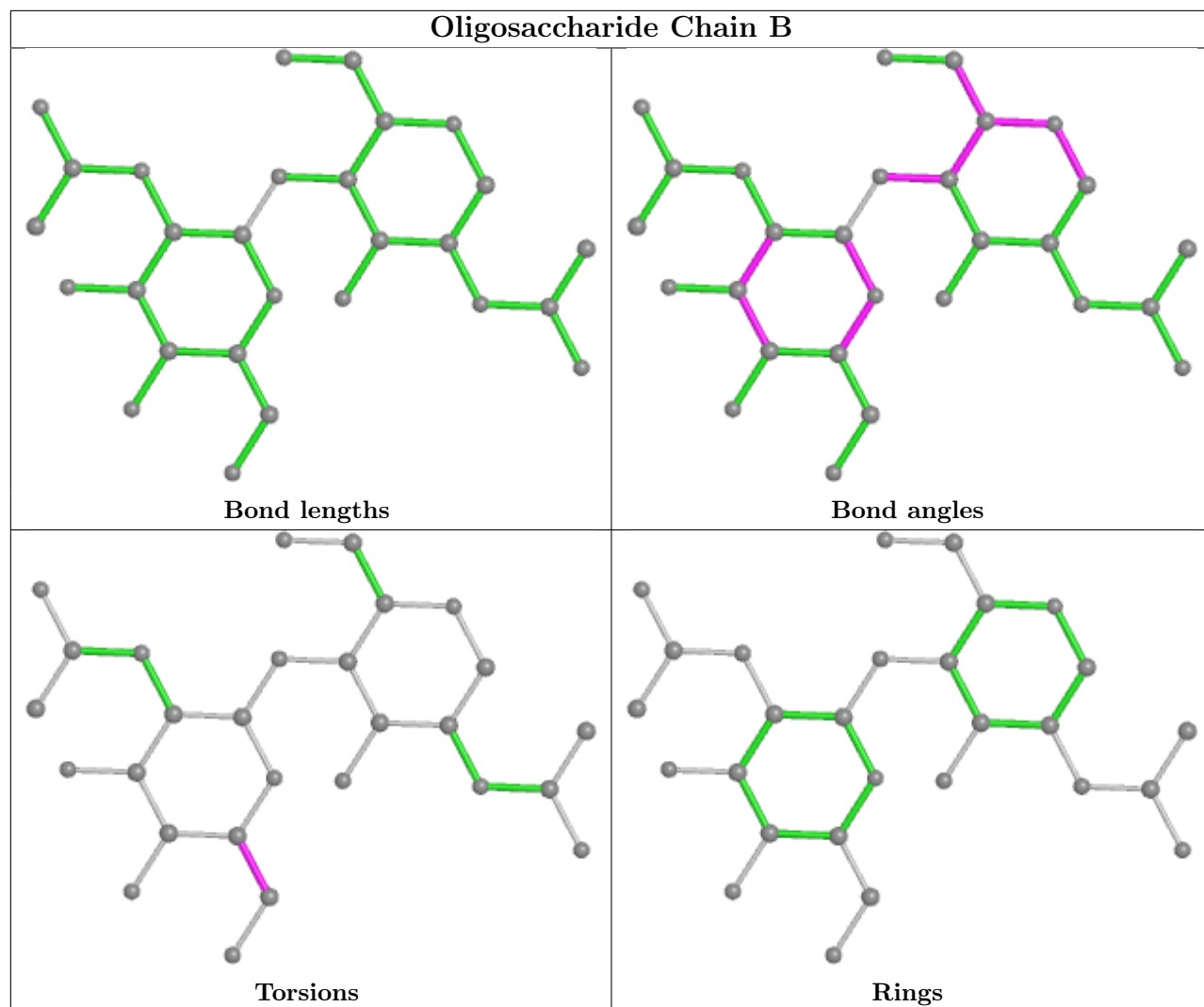
All (6) torsion outliers are listed below:

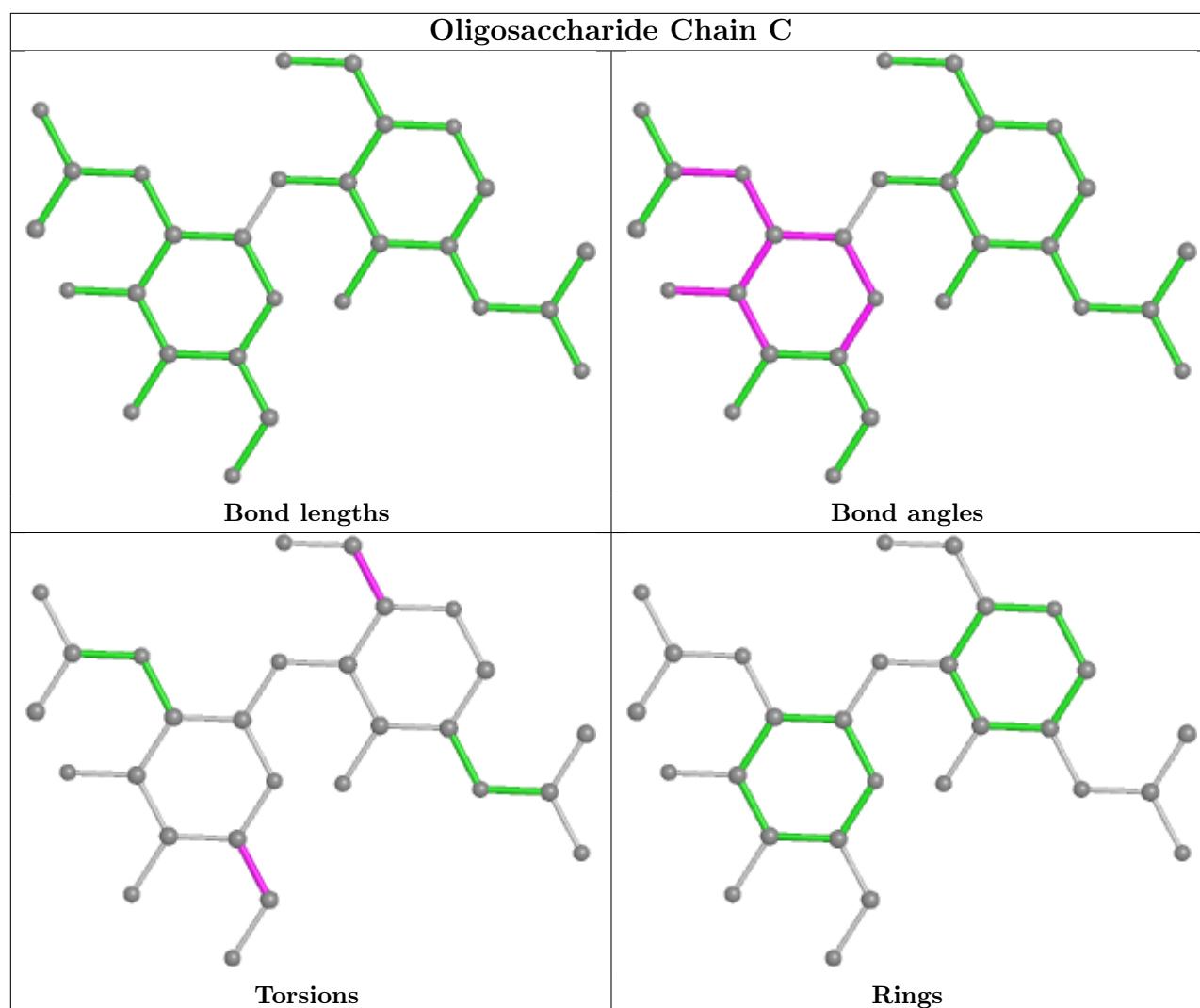
Mol	Chain	Res	Type	Atoms
2	B	2	NAG	C4-C5-C6-O6
2	B	2	NAG	O5-C5-C6-O6
2	C	2	NAG	C4-C5-C6-O6
2	C	2	NAG	O5-C5-C6-O6
2	C	1	NAG	O5-C5-C6-O6
2	C	1	NAG	C4-C5-C6-O6

There are no ring outliers.

No monomer is involved in short contacts.

The following is a two-dimensional graphical depiction of Mogul quality analysis of bond lengths, bond angles, torsion angles, and ring geometry for oligosaccharide.





5.6 Ligand geometry [i](#)

Of 29 ligands modelled in this entry, 21 are monoatomic - leaving 8 for Mogul analysis.

In the following table, the Counts columns list the number of bonds (or angles) for which Mogul statistics could be retrieved, the number of bonds (or angles) that are observed in the model and the number of bonds (or angles) that are defined in the Chemical Component Dictionary. The Link column lists molecule types, if any, to which the group is linked. The Z score for a bond length (or angle) is the number of standard deviations the observed value is removed from the expected value. A bond length (or angle) with $|Z| > 2$ is considered an outlier worth inspection. RMSZ is the root-mean-square of all Z scores of the bond lengths (or angles).

Mol	Type	Chain	Res	Link	Bond lengths			Bond angles		
					Counts	RMSZ	$\# Z > 2$	Counts	RMSZ	$\# Z > 2$
5	NAG	A	603	1	14,14,15	0.69	0	12,19,21	1.98	4 (33%)
3	HEM	A	601	1,11	27,50,50	1.02	1 (3%)	17,82,82	2.10	4 (23%)
7	GOL	A	614	-	5,5,5	0.16	0	5,5,5	0.58	0

Mol	Type	Chain	Res	Link	Bond lengths			Bond angles		
					Counts	RMSZ	# Z > 2	Counts	RMSZ	# Z > 2
11	PEO	A	627	3	1,1,1	0.70	0	-		
10	OSM	A	619	-	1,3,3	0.01	0	0,2,2	0.00	-
8	EDO	A	615	-	3,3,3	1.90	2 (66%)	2,2,2	0.97	0
10	OSM	A	618	-	1,3,3	0.02	0	0,2,2	0.00	-
10	OSM	A	617	-	1,3,3	0.01	0	0,2,2	0.00	-

In the following table, the Chirals column lists the number of chiral outliers, the number of chiral centers analysed, the number of these observed in the model and the number defined in the Chemical Component Dictionary. Similar counts are reported in the Torsion and Rings columns. '-' means no outliers of that kind were identified.

Mol	Type	Chain	Res	Link	Chirals	Torsions	Rings
3	HEM	A	601	1,11	-	0/6/54/54	-
7	GOL	A	614	-	-	3/4/4/4	-
10	OSM	A	619	-	-	0/0/1/1	-
8	EDO	A	615	-	-	0/1/1/1	-
10	OSM	A	618	-	-	0/0/1/1	-
10	OSM	A	617	-	-	0/0/1/1	-

All (3) bond length outliers are listed below:

Mol	Chain	Res	Type	Atoms	Z	Observed(Å)	Ideal(Å)
3	A	601	HEM	C4D-C3D	2.76	1.48	1.42
8	A	615	EDO	O2-C2	-2.39	1.29	1.42
8	A	615	EDO	O1-C1	-2.01	1.31	1.42

All (8) bond angle outliers are listed below:

Mol	Chain	Res	Type	Atoms	Z	Observed(°)	Ideal(°)
5	A	603	NAG	O5-C1-C2	-4.04	104.91	111.29
3	A	601	HEM	CMB-C2B-C3B	4.00	132.17	124.68
3	A	601	HEM	CBD-CAD-C3D	-3.77	105.54	112.48
3	A	601	HEM	CMC-C2C-C3C	3.75	131.70	124.68
3	A	601	HEM	C1D-C2D-C3D	-3.64	104.47	107.00
5	A	603	NAG	C4-C3-C2	-2.98	106.65	111.02
5	A	603	NAG	O5-C5-C6	2.90	111.75	107.20
5	A	603	NAG	O4-C4-C5	2.01	114.28	109.30

There are no chirality outliers.

All (3) torsion outliers are listed below:

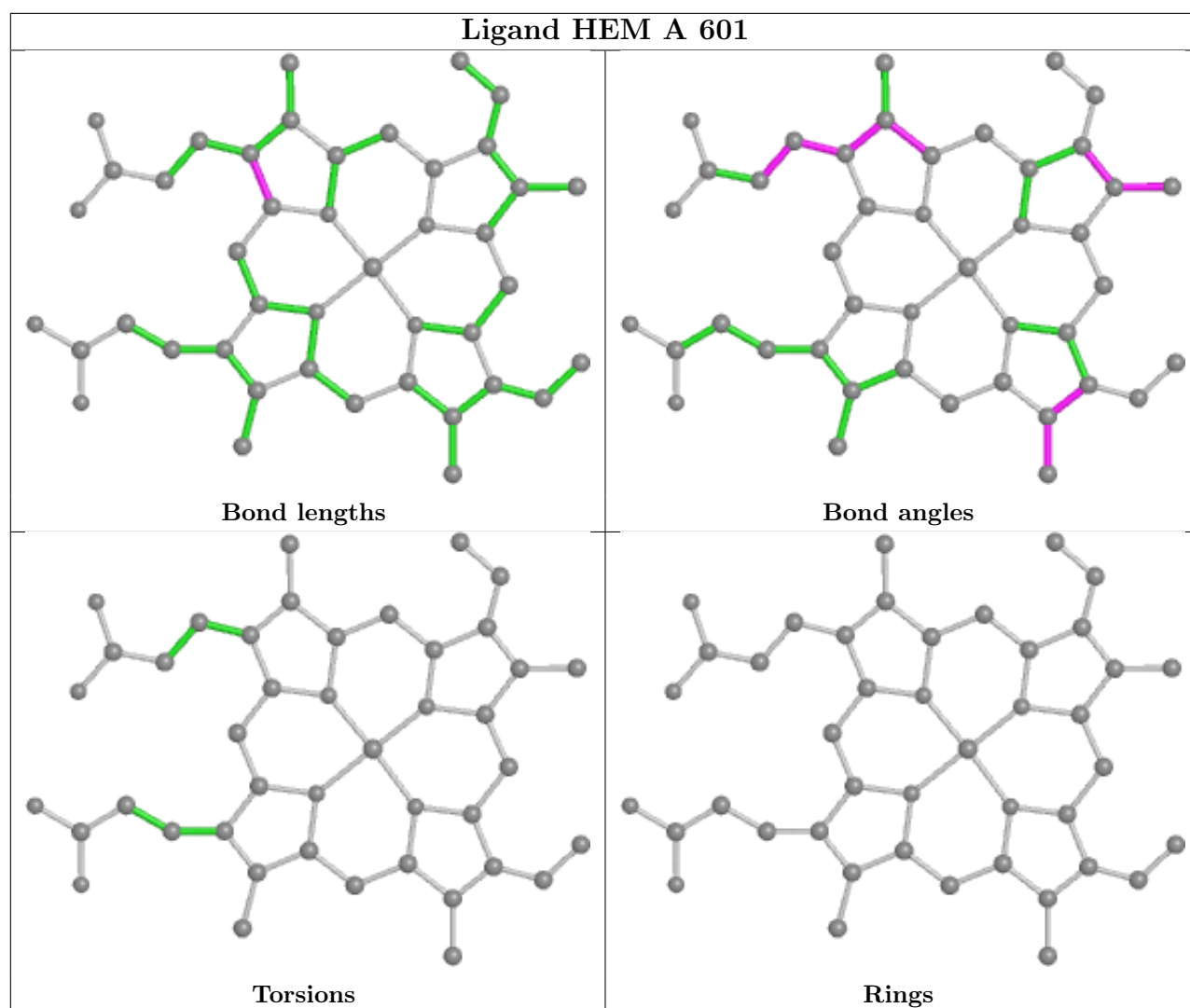
Mol	Chain	Res	Type	Atoms
7	A	614	GOL	O1-C1-C2-C3
7	A	614	GOL	O1-C1-C2-O2
7	A	614	GOL	C1-C2-C3-O3

There are no ring outliers.

6 monomers are involved in 11 short contacts:

Mol	Chain	Res	Type	Clashes	Symm-Clashes
3	A	601	HEM	1	0
7	A	614	GOL	2	0
11	A	627	PEO	2	0
10	A	619	OSM	2	0
8	A	615	EDO	1	0
10	A	617	OSM	3	0

The following is a two-dimensional graphical depiction of Mogul quality analysis of bond lengths, bond angles, torsion angles, and ring geometry for all instances of the Ligand of Interest. In addition, ligands with molecular weight > 250 and outliers as shown on the validation Tables will also be included. For torsion angles, if less than 5% of the Mogul distribution of torsion angles is within 10 degrees of the torsion angle in question, then that torsion angle is considered an outlier. Any bond that is central to one or more torsion angles identified as an outlier by Mogul will be highlighted in the graph. For rings, the root-mean-square deviation (RMSD) between the ring in question and similar rings identified by Mogul is calculated over all ring torsion angles. If the average RMSD is greater than 60 degrees and the minimal RMSD between the ring in question and any Mogul-identified rings is also greater than 60 degrees, then that ring is considered an outlier. The outliers are highlighted in purple. The color gray indicates Mogul did not find sufficient equivalents in the CSD to analyse the geometry.



5.7 Other polymers [i](#)

There are no such residues in this entry.

5.8 Polymer linkage issues [i](#)

There are no chain breaks in this entry.

6 Fit of model and data

6.1 Protein, DNA and RNA chains

In the following table, the column labelled ‘#RSRZ> 2’ contains the number (and percentage) of RSRZ outliers, followed by percent RSRZ outliers for the chain as percentile scores relative to all X-ray entries and entries of similar resolution. The OWAB column contains the minimum, median, 95th percentile and maximum values of the occupancy-weighted average B-factor per residue. The column labelled ‘Q< 0.9’ lists the number of (and percentage) of residues with an average occupancy less than 0.9.

Mol	Chain	Analysed	<RSRZ>	#RSRZ>2		OWAB(Å ²)	Q<0.9
1	A	595/595 (100%)	0.63	46 (7%)	13 13	14, 26, 94, 171	0

All (46) RSRZ outliers are listed below:

Mol	Chain	Res	Type	RSRZ
1	A	1	SER	28.0
1	A	174	SER	25.5
1	A	2	TRP	22.8
1	A	7	GLY	20.4
1	A	10	VAL	16.8
1	A	172	TYR	16.1
1	A	4	VAL	14.4
1	A	120	GLY	14.0
1	A	121	SER	12.9
1	A	8	ALA	12.8
1	A	12	LEU	11.9
1	A	119	LEU	11.8
1	A	13	VAL	10.7
1	A	122	ASN	9.9
1	A	595	ASN	9.5
1	A	171	PRO	9.4
1	A	124	HIS	9.0
1	A	173	GLN	8.8
1	A	3	GLU	7.9
1	A	594	GLU	7.9
1	A	6	CYS	7.4
1	A	168	PRO	7.3
1	A	593	ARG	6.8
1	A	11	PRO	6.8
1	A	169	THR	6.1
1	A	5	GLY	5.9
1	A	118	GLU	5.9

Continued on next page...

Continued from previous page...

Mol	Chain	Res	Type	RSRZ
1	A	125	SER	5.8
1	A	283	LEU	5.2
1	A	14	LYS	4.7
1	A	175	LEU	4.5
1	A	9	PRO	4.4
1	A	129	CYS	3.9
1	A	123	GLU	3.9
1	A	132	TYR	3.7
1	A	170	PRO	3.6
1	A	128	GLN	3.0
1	A	167	CYS	2.9
1	A	126	LYS	2.7
1	A	18	ASN	2.6
1	A	64	ARG	2.6
1	A	240	ILE	2.5
1	A	209	PRO	2.3
1	A	146	LYS	2.2
1	A	254	PHE	2.1
1	A	17	GLU	2.1

6.2 Non-standard residues in protein, DNA, RNA chains [i](#)

There are no non-standard protein/DNA/RNA residues in this entry.

6.3 Carbohydrates [i](#)

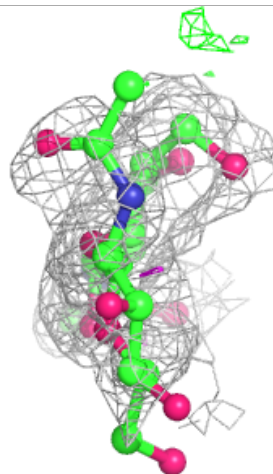
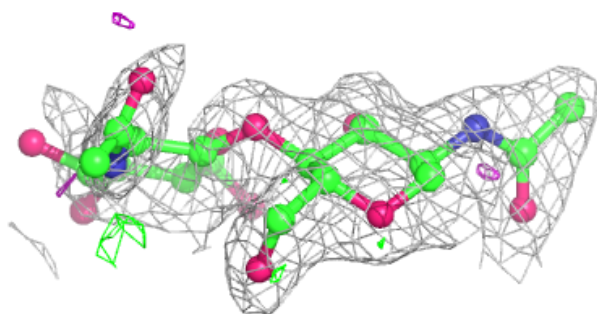
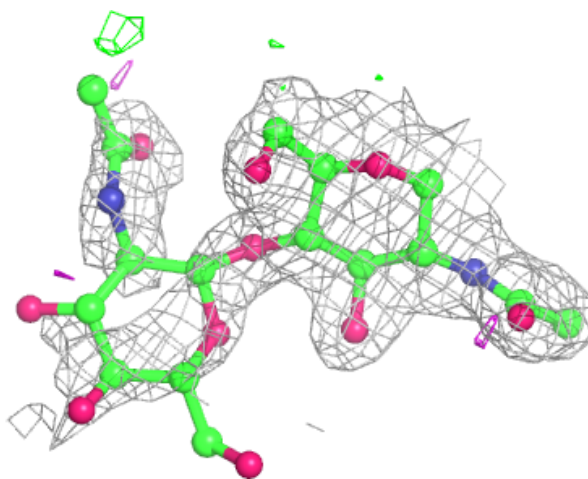
In the following table, the Atoms column lists the number of modelled atoms in the group and the number defined in the chemical component dictionary. The B-factors column lists the minimum, median, 95th percentile and maximum values of B factors of atoms in the group. The column labelled 'Q< 0.9' lists the number of atoms with occupancy less than 0.9.

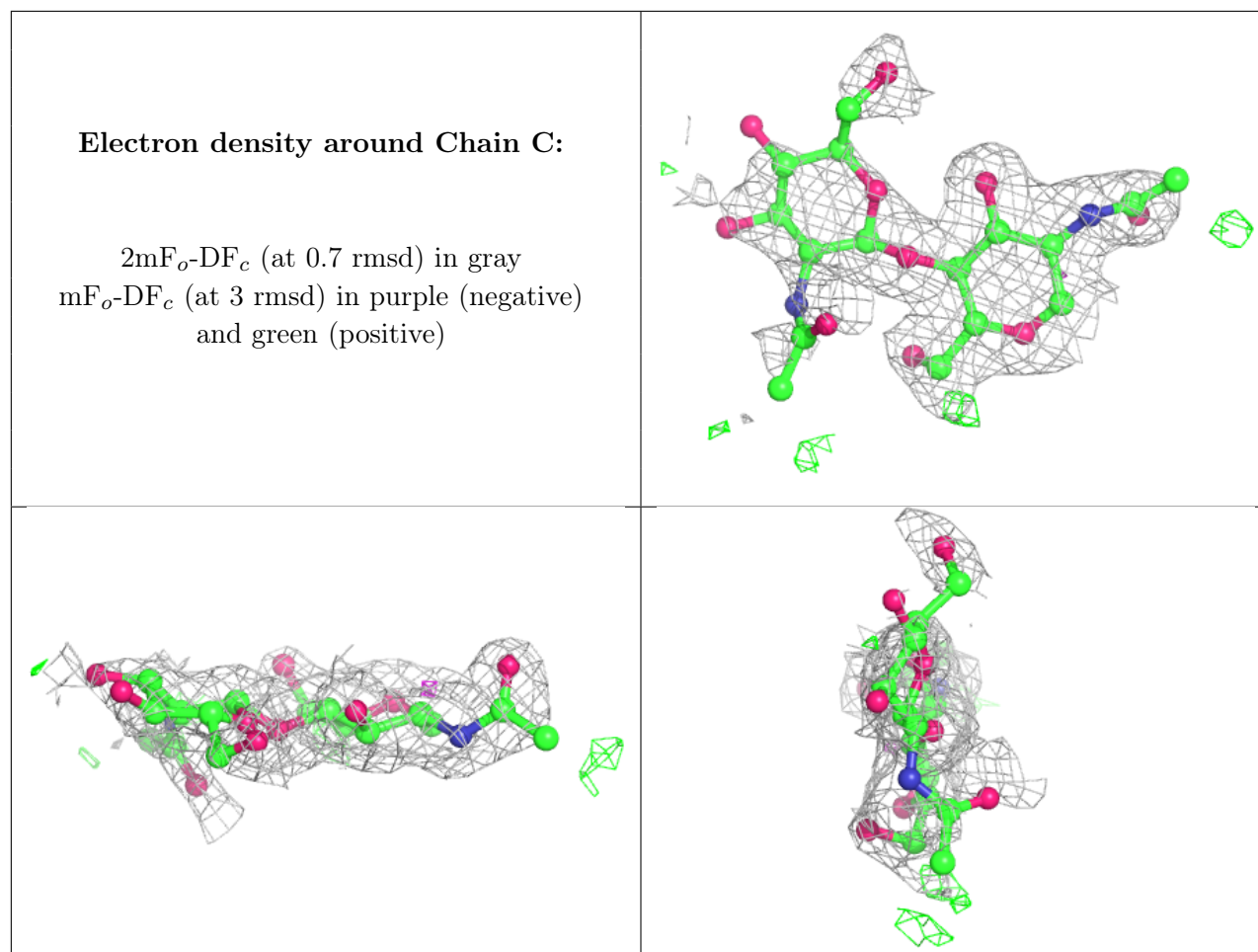
Mol	Type	Chain	Res	Atoms	RSCC	RSR	B-factors(\AA^2)	Q<0.9
2	NAG	B	2	14/15	0.71	0.41	64,82,87,90	0
2	NAG	C	2	14/15	0.75	0.32	60,73,80,81	0
2	NAG	B	1	14/15	0.88	0.12	29,35,44,46	0
2	NAG	C	1	14/15	0.95	0.10	24,33,41,45	0

The following is a graphical depiction of the model fit to experimental electron density for oligosaccharide. Each fit is shown from different orientation to approximate a three-dimensional view.

Electron density around Chain B:

$2mF_o-DF_c$ (at 0.7 rmsd) in gray
 mF_o-DF_c (at 3 rmsd) in purple (negative)
and green (positive)





6.4 Ligands ⓘ

In the following table, the Atoms column lists the number of modelled atoms in the group and the number defined in the chemical component dictionary. The B-factors column lists the minimum, median, 95th percentile and maximum values of B factors of atoms in the group. The column labelled 'Q< 0.9' lists the number of atoms with occupancy less than 0.9.

Mol	Type	Chain	Res	Atoms	RSCC	RSR	B-factors(Å ²)	Q<0.9
5	NAG	A	603	14/15	0.87	0.20	39,45,52,54	0
7	GOL	A	614	6/6	0.90	0.18	32,38,48,48	0
6	IOD	A	629	1/1	0.93	0.15	74,74,74,74	1
10	OSM	A	619	4/4	0.95	0.17	33,36,37,38	4
11	PEO	A	627	2/2	0.95	0.11	19,19,19,23	0
6	IOD	A	613	1/1	0.95	0.05	33,33,33,33	1
10	OSM	A	617	4/4	0.96	0.09	34,35,37,45	0
6	IOD	A	623	1/1	0.96	0.04	43,43,43,43	1
6	IOD	A	626	1/1	0.96	0.04	34,34,34,34	0
10	OSM	A	618	4/4	0.96	0.13	30,36,37,38	0
6	IOD	A	611	1/1	0.97	0.06	38,38,38,38	1

Continued on next page...

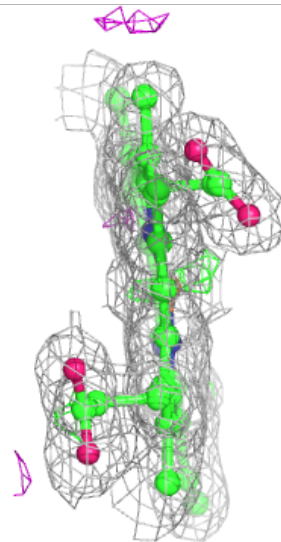
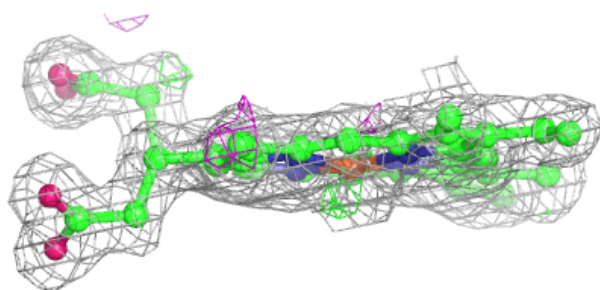
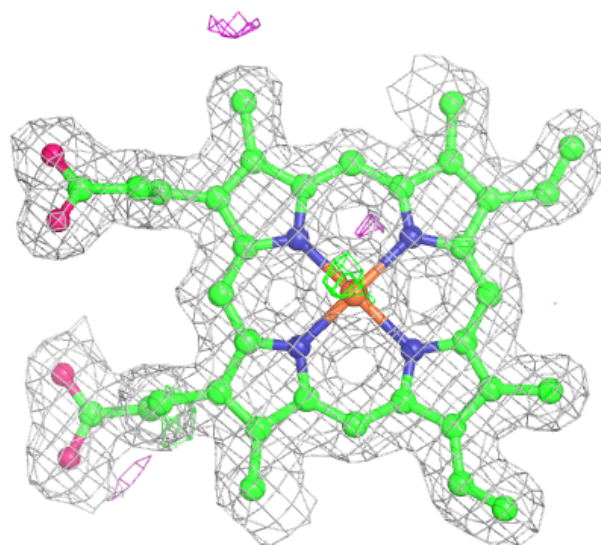
Continued from previous page...

Mol	Type	Chain	Res	Atoms	RSCC	RSR	B-factors(\AA^2)	Q<0.9
6	IOD	A	610	1/1	0.97	0.06	55,55,55,55	1
6	IOD	A	607	1/1	0.97	0.04	36,36,36,36	1
6	IOD	A	612	1/1	0.98	0.03	37,37,37,37	1
3	HEM	A	601	43/43	0.98	0.11	14,15,19,19	0
6	IOD	A	622	1/1	0.98	0.06	38,38,38,38	1
6	IOD	A	628	1/1	0.98	0.03	43,43,43,43	0
8	EDO	A	615	4/4	0.98	0.06	18,19,19,21	0
6	IOD	A	606	1/1	0.98	0.03	41,41,41,41	1
6	IOD	A	625	1/1	0.98	0.04	35,35,35,35	1
6	IOD	A	608	1/1	0.99	0.04	26,26,26,26	0
6	IOD	A	621	1/1	0.99	0.02	39,39,39,39	1
6	IOD	A	624	1/1	0.99	0.03	34,34,34,34	1
6	IOD	A	609	1/1	0.99	0.03	32,32,32,32	1
6	IOD	A	620	1/1	0.99	0.08	24,24,24,24	1
6	IOD	A	605	1/1	0.99	0.04	29,29,29,29	1
9	ZN	A	616	1/1	0.99	0.03	32,32,32,32	0
4	CA	A	602	1/1	1.00	0.05	16,16,16,16	0
6	IOD	A	604	1/1	1.00	0.06	17,17,17,17	1

The following is a graphical depiction of the model fit to experimental electron density of all instances of the Ligand of Interest. In addition, ligands with molecular weight > 250 and outliers as shown on the geometry validation Tables will also be included. Each fit is shown from different orientation to approximate a three-dimensional view.

Electron density around HEM A 601:

$2mF_o-DF_c$ (at 0.7 rmsd) in gray
 mF_o-DF_c (at 3 rmsd) in purple (negative)
and green (positive)



6.5 Other polymers [i](#)

There are no such residues in this entry.