



# wwPDB X-ray Structure Validation Summary Report ⓘ

Sep 9, 2020 – 01:58 PM BST

PDB ID : 5DNC  
Title : Crystal structure of the Asn-bound guinea pig L-asparaginase 1 catalytic domain active site mutant T19A  
Authors : Schalk, A.M.; Lavie, A.  
Deposited on : 2015-09-09  
Resolution : 2.01 Å(reported)

This is a wwPDB X-ray Structure Validation Summary Report for a publicly released PDB entry.

We welcome your comments at [validation@mail.wwpdb.org](mailto:validation@mail.wwpdb.org)

A user guide is available at

<https://www.wwpdb.org/validation/2017/XrayValidationReportHelp>

with specific help available everywhere you see the ⓘ symbol.

---

The following versions of software and data (see [references ⓘ](#)) were used in the production of this report:

MolProbity : 4.02b-467  
Mogul : 1.8.5 (274361), CSD as541be (2020)  
Xtriage (Phenix) : 1.13  
EDS : 2.14.3.dev2  
Percentile statistics : 20191225.v01 (using entries in the PDB archive December 25th 2019)  
Refmac : 5.8.0158  
CCP4 : 7.0.044 (Gargrove)  
Ideal geometry (proteins) : Engh & Huber (2001)  
Ideal geometry (DNA, RNA) : Parkinson et al. (1996)  
Validation Pipeline (wwPDB-VP) : 2.14.3.dev2

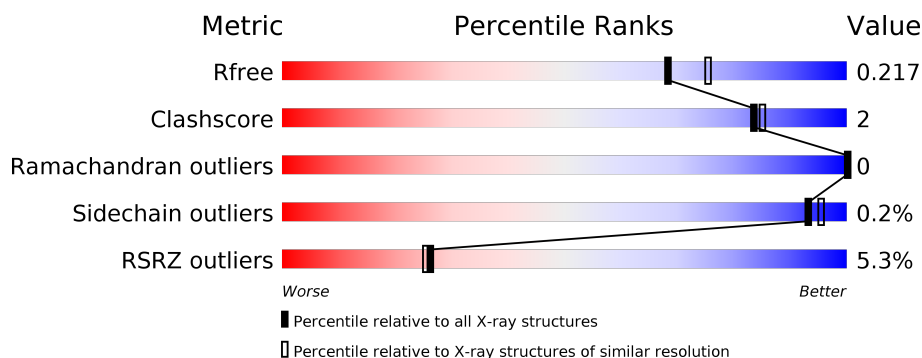
# 1 Overall quality at a glance

The following experimental techniques were used to determine the structure:

## *X-RAY DIFFRACTION*

The reported resolution of this entry is 2.01 Å.

Percentile scores (ranging between 0-100) for global validation metrics of the entry are shown in the following graphic. The table shows the number of entries on which the scores are based.



Metric	Whole archive (#Entries)	Similar resolution (#Entries, resolution range(Å))
$R_{free}$	130704	8085 (2.00-2.00)
Clashscore	141614	9178 (2.00-2.00)
Ramachandran outliers	138981	9054 (2.00-2.00)
Sidechain outliers	138945	9053 (2.00-2.00)
RSRZ outliers	127900	7900 (2.00-2.00)

The table below summarises the geometric issues observed across the polymeric chains and their fit to the electron density. The red, orange, yellow and green segments on the lower bar indicate the fraction of residues that contain outliers for  $\geq 3$ , 2, 1 and 0 types of geometric quality criteria respectively. A grey segment represents the fraction of residues that are not modelled. The numeric value for each fraction is indicated below the corresponding segment, with a dot representing fractions  $\leq 5\%$ . The upper red bar (where present) indicates the fraction of residues that have poor fit to the electron density. The numeric value is given above the bar.

Mol	Chain	Length	Quality of chain
1	A	588	<div> <div>4%</div> <div> <div></div> <div>57%</div> <div>•</div> <div>40%</div> </div> </div>
1	B	588	<div> <div>3%</div> <div> <div></div> <div>57%</div> <div>•</div> <div>40%</div> </div> </div>
1	C	588	<div> <div>3%</div> <div> <div></div> <div>56%</div> <div>•</div> <div>40%</div> </div> </div>
1	D	588	<div> <div>3%</div> <div> <div></div> <div>57%</div> <div>•</div> <div>39%</div> </div> </div>

## 2 Entry composition

There are 4 unique types of molecules in this entry. The entry contains 11493 atoms, of which 0 are hydrogens and 0 are deuteriums.

In the tables below, the ZeroOcc column contains the number of atoms modelled with zero occupancy, the AltConf column contains the number of residues with at least one atom in alternate conformation and the Trace column contains the number of residues modelled with at most 2 atoms.

- Molecule 1 is a protein called L-asparaginase.

Mol	Chain	Residues	Atoms					ZeroOcc	AltConf	Trace
1	A	354	Total	C	N	O	S	0	0	0
			2708	1733	468	491	16			
1	B	355	Total	C	N	O	S	0	1	0
			2729	1748	471	494	16			
1	C	354	Total	C	N	O	S	0	1	0
			2719	1743	469	491	16			
1	D	356	Total	C	N	O	S	0	0	0
			2720	1740	470	494	16			

There are 96 discrepancies between the modelled and reference sequences:

Chain	Residue	Modelled	Actual	Comment	Reference
A	-22	MET	-	initiating methionine	UNP H0W0T5
A	-21	GLY	-	expression tag	UNP H0W0T5
A	-20	SER	-	expression tag	UNP H0W0T5
A	-19	SER	-	expression tag	UNP H0W0T5
A	-18	HIS	-	expression tag	UNP H0W0T5
A	-17	HIS	-	expression tag	UNP H0W0T5
A	-16	HIS	-	expression tag	UNP H0W0T5
A	-15	HIS	-	expression tag	UNP H0W0T5
A	-14	HIS	-	expression tag	UNP H0W0T5
A	-13	HIS	-	expression tag	UNP H0W0T5
A	-12	SER	-	expression tag	UNP H0W0T5
A	-11	SER	-	expression tag	UNP H0W0T5
A	-10	GLY	-	expression tag	UNP H0W0T5
A	-9	GLY	-	expression tag	UNP H0W0T5
A	-8	ASN	-	expression tag	UNP H0W0T5
A	-7	GLU	-	expression tag	UNP H0W0T5
A	-6	ASN	-	expression tag	UNP H0W0T5
A	-5	LEU	-	expression tag	UNP H0W0T5
A	-4	TYR	-	expression tag	UNP H0W0T5
A	-3	PHE	-	expression tag	UNP H0W0T5
A	-2	GLN	-	expression tag	UNP H0W0T5

*Continued on next page...*

*Continued from previous page...*

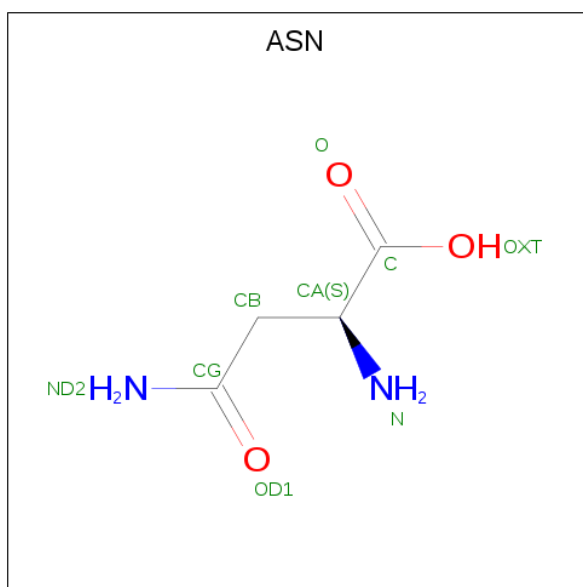
Chain	Residue	Modelled	Actual	Comment	Reference
A	-1	GLY	-	expression tag	UNP H0W0T5
A	0	HIS	-	expression tag	UNP H0W0T5
A	19	ALA	THR	engineered mutation	UNP H0W0T5
B	-22	MET	-	initiating methionine	UNP H0W0T5
B	-21	GLY	-	expression tag	UNP H0W0T5
B	-20	SER	-	expression tag	UNP H0W0T5
B	-19	SER	-	expression tag	UNP H0W0T5
B	-18	HIS	-	expression tag	UNP H0W0T5
B	-17	HIS	-	expression tag	UNP H0W0T5
B	-16	HIS	-	expression tag	UNP H0W0T5
B	-15	HIS	-	expression tag	UNP H0W0T5
B	-14	HIS	-	expression tag	UNP H0W0T5
B	-13	HIS	-	expression tag	UNP H0W0T5
B	-12	SER	-	expression tag	UNP H0W0T5
B	-11	SER	-	expression tag	UNP H0W0T5
B	-10	GLY	-	expression tag	UNP H0W0T5
B	-9	GLY	-	expression tag	UNP H0W0T5
B	-8	ASN	-	expression tag	UNP H0W0T5
B	-7	GLU	-	expression tag	UNP H0W0T5
B	-6	ASN	-	expression tag	UNP H0W0T5
B	-5	LEU	-	expression tag	UNP H0W0T5
B	-4	TYR	-	expression tag	UNP H0W0T5
B	-3	PHE	-	expression tag	UNP H0W0T5
B	-2	GLN	-	expression tag	UNP H0W0T5
B	-1	GLY	-	expression tag	UNP H0W0T5
B	0	HIS	-	expression tag	UNP H0W0T5
B	19	ALA	THR	engineered mutation	UNP H0W0T5
C	-22	MET	-	initiating methionine	UNP H0W0T5
C	-21	GLY	-	expression tag	UNP H0W0T5
C	-20	SER	-	expression tag	UNP H0W0T5
C	-19	SER	-	expression tag	UNP H0W0T5
C	-18	HIS	-	expression tag	UNP H0W0T5
C	-17	HIS	-	expression tag	UNP H0W0T5
C	-16	HIS	-	expression tag	UNP H0W0T5
C	-15	HIS	-	expression tag	UNP H0W0T5
C	-14	HIS	-	expression tag	UNP H0W0T5
C	-13	HIS	-	expression tag	UNP H0W0T5
C	-12	SER	-	expression tag	UNP H0W0T5
C	-11	SER	-	expression tag	UNP H0W0T5
C	-10	GLY	-	expression tag	UNP H0W0T5
C	-9	GLY	-	expression tag	UNP H0W0T5
C	-8	ASN	-	expression tag	UNP H0W0T5

*Continued on next page...*

*Continued from previous page...*

Chain	Residue	Modelled	Actual	Comment	Reference
C	-7	GLU	-	expression tag	UNP H0W0T5
C	-6	ASN	-	expression tag	UNP H0W0T5
C	-5	LEU	-	expression tag	UNP H0W0T5
C	-4	TYR	-	expression tag	UNP H0W0T5
C	-3	PHE	-	expression tag	UNP H0W0T5
C	-2	GLN	-	expression tag	UNP H0W0T5
C	-1	GLY	-	expression tag	UNP H0W0T5
C	0	HIS	-	expression tag	UNP H0W0T5
C	19	ALA	THR	engineered mutation	UNP H0W0T5
D	-22	MET	-	initiating methionine	UNP H0W0T5
D	-21	GLY	-	expression tag	UNP H0W0T5
D	-20	SER	-	expression tag	UNP H0W0T5
D	-19	SER	-	expression tag	UNP H0W0T5
D	-18	HIS	-	expression tag	UNP H0W0T5
D	-17	HIS	-	expression tag	UNP H0W0T5
D	-16	HIS	-	expression tag	UNP H0W0T5
D	-15	HIS	-	expression tag	UNP H0W0T5
D	-14	HIS	-	expression tag	UNP H0W0T5
D	-13	HIS	-	expression tag	UNP H0W0T5
D	-12	SER	-	expression tag	UNP H0W0T5
D	-11	SER	-	expression tag	UNP H0W0T5
D	-10	GLY	-	expression tag	UNP H0W0T5
D	-9	GLY	-	expression tag	UNP H0W0T5
D	-8	ASN	-	expression tag	UNP H0W0T5
D	-7	GLU	-	expression tag	UNP H0W0T5
D	-6	ASN	-	expression tag	UNP H0W0T5
D	-5	LEU	-	expression tag	UNP H0W0T5
D	-4	TYR	-	expression tag	UNP H0W0T5
D	-3	PHE	-	expression tag	UNP H0W0T5
D	-2	GLN	-	expression tag	UNP H0W0T5
D	-1	GLY	-	expression tag	UNP H0W0T5
D	0	HIS	-	expression tag	UNP H0W0T5
D	19	ALA	THR	engineered mutation	UNP H0W0T5

- Molecule 2 is ASPARAGINE (three-letter code: ASN) (formula: C<sub>4</sub>H<sub>8</sub>N<sub>2</sub>O<sub>3</sub>).



Mol	Chain	Residues	Atoms				ZeroOcc	AltConf
2	A	1	Total	C	N	O	0	0
			9	4	2	3		
2	B	1	Total	C	N	O	0	0
			9	4	2	3		
2	C	1	Total	C	N	O	0	0
			9	4	2	3		
2	D	1	Total	C	N	O	0	0
			9	4	2	3		

- Molecule 3 is 1,2-ETHANEDIOL (three-letter code: EDO) (formula: C<sub>2</sub>H<sub>6</sub>O<sub>2</sub>).



Mol	Chain	Residues	Atoms	ZeroOcc	AltConf
3	A	1	Total C O 4 2 2	0	0
3	A	1	Total C O 4 2 2	0	0
3	A	1	Total C O 4 2 2	0	0
3	A	1	Total C O 4 2 2	0	0
3	A	1	Total C O 4 2 2	0	0
3	B	1	Total C O 4 2 2	0	0
3	B	1	Total C O 4 2 2	0	0
3	B	1	Total C O 4 2 2	0	0
3	B	1	Total C O 4 2 2	0	0
3	B	1	Total C O 4 2 2	0	0
3	C	1	Total C O 4 2 2	0	0
3	C	1	Total C O 4 2 2	0	0
3	C	1	Total C O 4 2 2	0	0
3	C	1	Total C O 4 2 2	0	0
3	D	1	Total C O 4 2 2	0	0
3	D	1	Total C O 4 2 2	0	0
3	D	1	Total C O 4 2 2	0	0
3	D	1	Total C O 4 2 2	0	0

- Molecule 4 is water.

Mol	Chain	Residues	Atoms	ZeroOcc	AltConf
4	A	147	Total O 147 147	0	0
4	B	136	Total O 136 136	0	0
4	C	120	Total O 120 120	0	0

*Continued on next page...*

*Continued from previous page...*

Mol	Chain	Residues	Atoms		ZeroOcc	AltConf
4	D	110	Total	O	0	0
			110	110		





[illegible]

Chain D:

Sequence logo for Chain D. The y-axis represents information content in bits (0.00 to 0.15). The x-axis lists amino acids. The logo shows high conservation at the N-terminus (positions 1-10) and at the C-terminus (positions 90-102). The most conserved residues are Lysine (L), Glutamine (Q), and Asparagine (N).

Position	Amino Acid	Information Content (bits)
1	Lysine (L)	0.15
2	Glutamine (Q)	0.15
3	Asparagine (N)	0.15
4	Glutamine (Q)	0.15
5	Asparagine (N)	0.15
6	Glutamine (Q)	0.15
7	Asparagine (N)	0.15
8	Glutamine (Q)	0.15
9	Asparagine (N)	0.15
10	Glutamine (Q)	0.15
11	Asparagine (N)	0.15
12	Glutamine (Q)	0.15
13	Asparagine (N)	0.15
14	Glutamine (Q)	0.15
15	Asparagine (N)	0.15
16	Glutamine (Q)	0.15
17	Asparagine (N)	0.15
18	Glutamine (Q)	0.15
19	Asparagine (N)	0.15
20	Glutamine (Q)	0.15
21	Asparagine (N)	0.15
22	Glutamine (Q)	0.15
23	Asparagine (N)	0.15
24	Glutamine (Q)	0.15
25	Asparagine (N)	0.15
26	Glutamine (Q)	0.15
27	Asparagine (N)	0.15
28	Glutamine (Q)	0.15
29	Asparagine (N)	0.15
30	Glutamine (Q)	0.15
31	Asparagine (N)	0.15
32	Glutamine (Q)	0.15
33	Asparagine (N)	0.15
34	Glutamine (Q)	0.15
35	Asparagine (N)	0.15
36	Glutamine (Q)	0.15
37	Asparagine (N)	0.15
38	Glutamine (Q)	0.15
39	Asparagine (N)	0.15
40	Glutamine (Q)	0.15
41	Asparagine (N)	0.15
42	Glutamine (Q)	0.15
43	Asparagine (N)	0.15
44	Glutamine (Q)	0.15
45	Asparagine (N)	0.15
46	Glutamine (Q)	0.15
47	Asparagine (N)	0.15
48	Glutamine (Q)	0.15
49	Asparagine (N)	0.15
50	Glutamine (Q)	0.15
51	Asparagine (N)	0.15
52	Glutamine (Q)	0.15
53	Asparagine (N)	0.15
54	Glutamine (Q)	0.15
55	Asparagine (N)	0.15
56	Glutamine (Q)	0.15
57	Asparagine (N)	0.15
58	Glutamine (Q)	0.15
59	Asparagine (N)	0.15
60	Glutamine (Q)	0.15
61	Asparagine (N)	0.15
62	Glutamine (Q)	0.15
63	Asparagine (N)	0.15
64	Glutamine (Q)	0.15
65	Asparagine (N)	0.15
66	Glutamine (Q)	0.15
67	Asparagine (N)	0.15
68	Glutamine (Q)	0.15
69	Asparagine (N)	0.15
70	Glutamine (Q)	0.15
71	Asparagine (N)	0.15
72	Glutamine (Q)	0.15
73	Asparagine (N)	0.15
74	Glutamine (Q)	0.15
75	Asparagine (N)	0.15
76	Glutamine (Q)	0.15
77	Asparagine (N)	0.15
78	Glutamine (Q)	0.15
79	Asparagine (N)	0.15
80	Glutamine (Q)	0.15
81	Asparagine (N)	0.15
82	Glutamine (Q)	0.15
83	Asparagine (N)	0.15
84	Glutamine (Q)	0.15
85	Asparagine (N)	0.15
86	Glutamine (Q)	0.15
87	Asparagine (N)	0.15
88	Glutamine (Q)	0.15
89	Asparagine (N)	0.15
90	Glutamine (Q)	0.15
91	Asparagine (N)	0.15
92	Glutamine (Q)	0.15
93	Asparagine (N)	0.15
94	Glutamine (Q)	0.15
95	Asparagine (N)	0.15
96	Glutamine (Q)	0.15
97	Asparagine (N)	0.15
98	Glutamine (Q)	0.15
99	Asparagine (N)	0.15
100	Glutamine (Q)	0.15
101	Asparagine (N)	0.15
102	Glutamine (Q)	0.15

## 4 Data and refinement statistics

Property	Value	Source
Space group	I 2 2 2	Depositor
Cell constants a, b, c, $\alpha$ , $\beta$ , $\gamma$	123.19Å 155.00Å 157.10Å 90.00° 90.00° 90.00°	Depositor
Resolution (Å)	30.00 – 2.01 29.66 – 2.01	Depositor EDS
% Data completeness (in resolution range)	96.6 (30.00-2.01) 96.7 (29.66-2.01)	Depositor EDS
$R_{merge}$	(Not available)	Depositor
$R_{sym}$	0.09	Depositor
$\langle I/\sigma(I) \rangle$ <sup>1</sup>	1.24 (at 2.01Å)	Xtriage
Refinement program	REFMAC 5.8.0073	Depositor
R, $R_{free}$	0.187 , 0.212 0.194 , 0.217	Depositor DCC
$R_{free}$ test set	4841 reflections (4.98%)	wwPDB-VP
Wilson B-factor (Å <sup>2</sup> )	32.5	Xtriage
Anisotropy	0.213	Xtriage
Bulk solvent $k_{sol}$ (e/Å <sup>3</sup> ), $B_{sol}$ (Å <sup>2</sup> )	0.36 , 44.3	EDS
L-test for twinning <sup>2</sup>	$\langle  L  \rangle = 0.49$ , $\langle L^2 \rangle = 0.32$	Xtriage
Estimated twinning fraction	0.014 for -h,-l,-k	Xtriage
$F_o, F_c$ correlation	0.96	EDS
Total number of atoms	11493	wwPDB-VP
Average B, all atoms (Å <sup>2</sup> )	38.0	wwPDB-VP

Xtriage's analysis on translational NCS is as follows: *The largest off-origin peak in the Patterson function is 5.89% of the height of the origin peak. No significant pseudotranslation is detected.*

<sup>1</sup>Intensities estimated from amplitudes.

<sup>2</sup>Theoretical values of  $\langle |L| \rangle$ ,  $\langle L^2 \rangle$  for acentric reflections are 0.5, 0.333 respectively for untwinned datasets, and 0.375, 0.2 for perfectly twinned datasets.

## 5 Model quality [i](#)

### 5.1 Standard geometry [i](#)

Bond lengths and bond angles in the following residue types are not validated in this section: EDO

The Z score for a bond length (or angle) is the number of standard deviations the observed value is removed from the expected value. A bond length (or angle) with  $|Z| > 5$  is considered an outlier worth inspection. RMSZ is the root-mean-square of all Z scores of the bond lengths (or angles).

Mol	Chain	Bond lengths		Bond angles	
		RMSZ	# Z  >5	RMSZ	# Z  >5
1	A	0.54	0/2765	0.67	1/3760 (0.0%)
1	B	0.52	0/2788	0.67	2/3793 (0.1%)
1	C	0.54	0/2781	0.68	1/3783 (0.0%)
1	D	0.52	0/2777	0.68	2/3777 (0.1%)
All	All	0.53	0/11111	0.68	6/15113 (0.0%)

There are no bond length outliers.

The worst 5 of 6 bond angle outliers are listed below:

Mol	Chain	Res	Type	Atoms	Z	Observed(°)	Ideal(°)
1	D	284	ARG	NE-CZ-NH2	5.31	122.95	120.30
1	D	102	ARG	NE-CZ-NH1	5.22	122.91	120.30
1	B	301	ARG	NE-CZ-NH2	5.18	122.89	120.30
1	A	253	ARG	NE-CZ-NH2	5.11	122.86	120.30
1	B	242	ARG	NE-CZ-NH2	5.05	122.83	120.30

There are no chirality outliers.

There are no planarity outliers.

### 5.2 Too-close contacts [i](#)

In the following table, the Non-H and H(model) columns list the number of non-hydrogen atoms and hydrogen atoms in the chain respectively. The H(added) column lists the number of hydrogen atoms added and optimized by MolProbity. The Clashes column lists the number of clashes within the asymmetric unit, whereas Symm-Clashes lists symmetry related clashes.

Mol	Chain	Non-H	H(model)	H(added)	Clashes	Symm-Clashes
1	A	2708	0	2779	16	0
1	B	2729	0	2795	13	0

*Continued on next page...*

*Continued from previous page...*

Mol	Chain	Non-H	H(model)	H(added)	Clashes	Symm-Clashes
1	C	2719	0	2789	18	0
1	D	2720	0	2791	17	0
2	A	9	0	5	0	0
2	B	9	0	5	0	0
2	C	9	0	5	0	0
2	D	9	0	5	0	0
3	A	20	0	30	1	0
3	B	16	0	24	0	0
3	C	16	0	24	3	0
3	D	16	0	24	3	0
4	A	147	0	0	1	0
4	B	136	0	0	1	0
4	C	120	0	0	0	0
4	D	110	0	0	1	0
All	All	11493	0	11276	54	0

The all-atom clashscore is defined as the number of clashes found per 1000 atoms (including hydrogen atoms). The all-atom clashscore for this structure is 2.

The worst 5 of 54 close contacts within the same asymmetric unit are listed below, sorted by their clash magnitude.

Atom-1	Atom-2	Interatomic distance (Å)	Clash overlap (Å)
1:C:281:GLN:OE1	1:C:284:ARG:NH2	2.03	0.90
1:C:150[A]:TRP:NE1	1:D:208:VAL:HG11	1.86	0.90
1:D:59:HIS:O	4:D:701:HOH:O	1.96	0.84
1:A:150:TRP:NE1	1:B:208:VAL:HG11	2.03	0.73
1:C:150[A]:TRP:NE1	1:D:208:VAL:CG1	2.53	0.71

There are no symmetry-related clashes.

## 5.3 Torsion angles [i](#)

### 5.3.1 Protein backbone [i](#)

In the following table, the Percentiles column shows the percent Ramachandran outliers of the chain as a percentile score with respect to all X-ray entries followed by that with respect to entries of similar resolution.

The Analysed column shows the number of residues for which the backbone conformation was analysed, and the total number of residues.

Mol	Chain	Analysed	Favoured	Allowed	Outliers	Percentiles	
1	A	352/588 (60%)	346 (98%)	6 (2%)	0	100	100
1	B	354/588 (60%)	348 (98%)	6 (2%)	0	100	100
1	C	353/588 (60%)	347 (98%)	6 (2%)	0	100	100
1	D	354/588 (60%)	348 (98%)	6 (2%)	0	100	100
All	All	1413/2352 (60%)	1389 (98%)	24 (2%)	0	100	100

There are no Ramachandran outliers to report.

### 5.3.2 Protein sidechains ⓘ

In the following table, the Percentiles column shows the percent sidechain outliers of the chain as a percentile score with respect to all X-ray entries followed by that with respect to entries of similar resolution.

The Analysed column shows the number of residues for which the sidechain conformation was analysed, and the total number of residues.

Mol	Chain	Analysed	Rotameric	Outliers	Percentiles	
1	A	295/473 (62%)	294 (100%)	1 (0%)	92	95
1	B	297/473 (63%)	297 (100%)	0	100	100
1	C	296/473 (63%)	295 (100%)	1 (0%)	92	95
1	D	296/473 (63%)	296 (100%)	0	100	100
All	All	1184/1892 (63%)	1182 (100%)	2 (0%)	93	95

All (2) residues with a non-rotameric sidechain are listed below:

Mol	Chain	Res	Type
1	A	211	ASP
1	C	211	ASP

Some sidechains can be flipped to improve hydrogen bonding and reduce clashes. All (3) such sidechains are listed below:

Mol	Chain	Res	Type
1	A	23	GLN
1	A	281	GLN
1	C	23	GLN

### 5.3.3 RNA ⓘ

There are no RNA molecules in this entry.

## 5.4 Non-standard residues in protein, DNA, RNA chains ⓘ

There are no non-standard protein/DNA/RNA residues in this entry.

## 5.5 Carbohydrates ⓘ

There are no monosaccharides in this entry.

## 5.6 Ligand geometry ⓘ

21 ligands are modelled in this entry.

In the following table, the Counts columns list the number of bonds (or angles) for which Mogul statistics could be retrieved, the number of bonds (or angles) that are observed in the model and the number of bonds (or angles) that are defined in the Chemical Component Dictionary. The Link column lists molecule types, if any, to which the group is linked. The Z score for a bond length (or angle) is the number of standard deviations the observed value is removed from the expected value. A bond length (or angle) with  $|Z| > 2$  is considered an outlier worth inspection. RMSZ is the root-mean-square of all Z scores of the bond lengths (or angles).

Mol	Type	Chain	Res	Link	Bond lengths			Bond angles		
					Counts	RMSZ	$\# Z  > 2$	Counts	RMSZ	$\# Z  > 2$
3	EDO	C	604	-	3,3,3	0.52	0	2,2,2	0.17	0
3	EDO	A	604	-	3,3,3	1.00	0	2,2,2	0.05	0
3	EDO	B	604	-	3,3,3	0.35	0	2,2,2	0.95	0
3	EDO	A	605	-	3,3,3	0.52	0	2,2,2	0.26	0
3	EDO	B	603	-	3,3,3	0.38	0	2,2,2	0.28	0
3	EDO	D	603	-	3,3,3	0.56	0	2,2,2	0.07	0
3	EDO	B	602	-	3,3,3	0.38	0	2,2,2	0.57	0
3	EDO	C	605	-	3,3,3	0.59	0	2,2,2	0.15	0
3	EDO	A	602	-	3,3,3	0.54	0	2,2,2	0.06	0
3	EDO	C	602	-	3,3,3	0.89	0	2,2,2	0.51	0
3	EDO	A	606	-	3,3,3	0.77	0	2,2,2	0.07	0
3	EDO	C	603	-	3,3,3	0.29	0	2,2,2	0.64	0
3	EDO	D	602	-	3,3,3	0.36	0	2,2,2	0.55	0
3	EDO	D	605	-	3,3,3	1.08	0	2,2,2	0.36	0
3	EDO	A	603	-	3,3,3	0.39	0	2,2,2	0.55	0
3	EDO	B	605	-	3,3,3	1.05	0	2,2,2	0.14	0
3	EDO	D	604	-	3,3,3	0.38	0	2,2,2	0.40	0

In the following table, the Chirals column lists the number of chiral outliers, the number of chiral centers analysed, the number of these observed in the model and the number defined in the Chemical Component Dictionary. Similar counts are reported in the Torsion and Rings columns. '-' means no outliers of that kind were identified.

Mol	Type	Chain	Res	Link	Chirals	Torsions	Rings
3	EDO	C	604	-	-	0/1/1/1	-
3	EDO	A	604	-	-	1/1/1/1	-
3	EDO	B	604	-	-	1/1/1/1	-
3	EDO	A	605	-	-	1/1/1/1	-
3	EDO	B	603	-	-	0/1/1/1	-
3	EDO	D	603	-	-	0/1/1/1	-
3	EDO	B	602	-	-	0/1/1/1	-
3	EDO	C	605	-	-	0/1/1/1	-
3	EDO	A	602	-	-	0/1/1/1	-
3	EDO	C	602	-	-	1/1/1/1	-
3	EDO	A	606	-	-	0/1/1/1	-
3	EDO	C	603	-	-	1/1/1/1	-
3	EDO	D	602	-	-	0/1/1/1	-
3	EDO	D	605	-	-	1/1/1/1	-
3	EDO	A	603	-	-	1/1/1/1	-
3	EDO	B	605	-	-	1/1/1/1	-
3	EDO	D	604	-	-	1/1/1/1	-

There are no bond length outliers.

There are no bond angle outliers.

There are no chirality outliers.

5 of 9 torsion outliers are listed below:

Mol	Chain	Res	Type	Atoms
3	B	604	EDO	O1-C1-C2-O2
3	D	604	EDO	O1-C1-C2-O2
3	A	604	EDO	O1-C1-C2-O2
3	A	605	EDO	O1-C1-C2-O2
3	C	602	EDO	O1-C1-C2-O2

There are no ring outliers.

3 monomers are involved in 7 short contacts:

Mol	Chain	Res	Type	Clashes	Symm-Clashes
3	A	605	EDO	1	0
3	C	602	EDO	3	0
3	D	605	EDO	3	0



## 5.7 Other polymers [i](#)

There are no such residues in this entry.

## 5.8 Polymer linkage issues [i](#)

There are no chain breaks in this entry.

## 6 Fit of model and data [i](#)

### 6.1 Protein, DNA and RNA chains [i](#)

In the following table, the column labelled ‘#RSRZ> 2’ contains the number (and percentage) of RSRZ outliers, followed by percent RSRZ outliers for the chain as percentile scores relative to all X-ray entries and entries of similar resolution. The OWAB column contains the minimum, median, 95<sup>th</sup> percentile and maximum values of the occupancy-weighted average B-factor per residue. The column labelled ‘Q< 0.9’ lists the number of (and percentage) of residues with an average occupancy less than 0.9.

Mol	Chain	Analysed	<RSRZ>	#RSRZ>2	OWAB(Å <sup>2</sup> )	Q<0.9
1	A	354/588 (60%)	0.01	23 (6%) 18 18	22, 31, 68, 119	0
1	B	355/588 (60%)	-0.03	15 (4%) 36 35	22, 34, 66, 99	0
1	C	354/588 (60%)	-0.03	18 (5%) 28 27	22, 32, 61, 102	0
1	D	356/588 (60%)	0.11	19 (5%) 26 25	24, 37, 70, 113	0
All	All	1419/2352 (60%)	0.02	75 (5%) 26 25	22, 34, 67, 119	0

The worst 5 of 75 RSRZ outliers are listed below:

Mol	Chain	Res	Type	RSRZ
1	A	68	HIS	8.1
1	D	68	HIS	7.9
1	A	67	SER	7.6
1	D	225	LYS	6.2
1	D	67	SER	6.2

### 6.2 Non-standard residues in protein, DNA, RNA chains [i](#)

There are no non-standard protein/DNA/RNA residues in this entry.

### 6.3 Carbohydrates [i](#)

There are no monosaccharides in this entry.

### 6.4 Ligands [i](#)

In the following table, the Atoms column lists the number of modelled atoms in the group and the number defined in the chemical component dictionary. The B-factors column lists the minimum, median, 95<sup>th</sup> percentile and maximum values of B factors of atoms in the group. The column labelled ‘Q< 0.9’ lists the number of atoms with occupancy less than 0.9.

Mol	Type	Chain	Res	Atoms	RSCC	RSR	B-factors( $\text{\AA}^2$ )	Q<0.9
3	EDO	D	605	4/4	0.73	0.17	33,34,35,38	0
3	EDO	A	604	4/4	0.79	0.16	37,38,41,42	0
3	EDO	C	602	4/4	0.83	0.12	33,38,39,41	0
3	EDO	D	602	4/4	0.85	0.16	46,47,47,50	0
3	EDO	B	605	4/4	0.85	0.12	31,37,38,42	0
3	EDO	C	605	4/4	0.89	0.15	45,50,51,51	0
3	EDO	A	606	4/4	0.91	0.17	34,38,39,39	0
3	EDO	C	603	4/4	0.92	0.23	45,45,46,48	0
3	EDO	A	602	4/4	0.93	0.14	38,41,42,43	0
3	EDO	A	603	4/4	0.93	0.14	52,53,53,53	0
3	EDO	A	605	4/4	0.93	0.10	47,48,48,49	0
3	EDO	B	603	4/4	0.93	0.22	46,48,49,50	0
3	EDO	B	604	4/4	0.94	0.23	48,48,49,49	0
3	EDO	C	604	4/4	0.94	0.09	45,48,49,49	0
3	EDO	D	604	4/4	0.95	0.13	51,54,54,55	0
2	ASN	B	601	9/9	0.96	0.08	26,28,29,31	0
3	EDO	D	603	4/4	0.96	0.14	30,33,34,34	0
2	ASN	C	601	9/9	0.97	0.06	24,26,29,30	0
3	EDO	B	602	4/4	0.97	0.08	35,38,41,44	0
2	ASN	D	601	9/9	0.97	0.08	23,26,27,27	0
2	ASN	A	601	9/9	0.97	0.09	27,28,29,33	0

## 6.5 Other polymers [i](#)

There are no such residues in this entry.