



Full wwPDB X-ray Structure Validation Report ⓘ

May 22, 2020 – 02:40 am BST

PDB ID : 5DP6
Title : Crystal Structure of EV71 3C Proteinase in complex with compound 7
Authors : Wu, C.; Zhang, L.; Li, P.; Cai, Q.; Peng, X.; Li, N.; Cai, Y.; Li, J.; Lin, T.
Deposited on : 2015-09-12
Resolution : 3.01 Å(reported)

This is a Full wwPDB X-ray Structure Validation Report for a publicly released PDB entry.

We welcome your comments at validation@mail.wwpdb.org

A user guide is available at

<https://www.wwpdb.org/validation/2017/XrayValidationReportHelp>

with specific help available everywhere you see the ⓘ symbol.

The following versions of software and data (see [references ⓘ](#)) were used in the production of this report:

MolProbity : 4.02b-467
Mogul : 1.8.5 (274361), CSD as541be (2020)
Xtriage (Phenix) : 1.13
EDS : 2.11
buster-report : 1.1.7 (2018)
Percentile statistics : 20191225.v01 (using entries in the PDB archive December 25th 2019)
Refmac : 5.8.0158
CCP4 : 7.0.044 (Gargrove)
Ideal geometry (proteins) : Engh & Huber (2001)
Ideal geometry (DNA, RNA) : Parkinson et al. (1996)
Validation Pipeline (wwPDB-VP) : 2.11

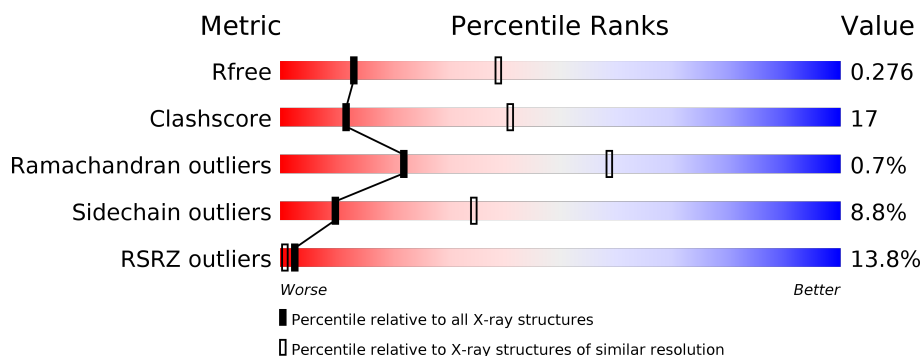
1 Overall quality at a glance ⓘ

The following experimental techniques were used to determine the structure:

X-RAY DIFFRACTION

The reported resolution of this entry is 3.01 Å.

Percentile scores (ranging between 0-100) for global validation metrics of the entry are shown in the following graphic. The table shows the number of entries on which the scores are based.



Metric	Whole archive (#Entries)	Similar resolution (#Entries, resolution range(Å))
R_{free}	130704	2399 (3.04-3.00)
Clashscore	141614	2734 (3.04-3.00)
Ramachandran outliers	138981	2640 (3.04-3.00)
Sidechain outliers	138945	2643 (3.04-3.00)
RSRZ outliers	127900	2287 (3.04-3.00)

The table below summarises the geometric issues observed across the polymeric chains and their fit to the electron density. The red, orange, yellow and green segments on the lower bar indicate the fraction of residues that contain outliers for ≥ 3 , 2, 1 and 0 types of geometric quality criteria respectively. A grey segment represents the fraction of residues that are not modelled. The numeric value for each fraction is indicated below the corresponding segment, with a dot representing fractions $\leq 5\%$. The upper red bar (where present) indicates the fraction of residues that have poor fit to the electron density. The numeric value is given above the bar.

Mol	Chain	Length	Quality of chain
1	A	192	<div> <div>70%</div> <div>17%</div> <div>5%</div> <div>•</div> <div>7%</div> </div>
1	B	192	<div> <div>66%</div> <div>21%</div> <div>•</div> <div>•</div> <div>7%</div> </div>
1	C	192	<div> <div>24%</div> <div>75%</div> <div>16%</div> <div>••</div> <div>7%</div> </div>
1	D	192	<div> <div>28%</div> <div>74%</div> <div>18%</div> <div>••</div> <div>6%</div> </div>

2 Entry composition

There are 2 unique types of molecules in this entry. The entry contains 5621 atoms, of which 0 are hydrogens and 0 are deuteriums.

In the tables below, the ZeroOcc column contains the number of atoms modelled with zero occupancy, the AltConf column contains the number of residues with at least one atom in alternate conformation and the Trace column contains the number of residues modelled with at most 2 atoms.

- Molecule 1 is a protein called 3C proteinase.

Mol	Chain	Residues	Atoms					ZeroOcc	AltConf	Trace
1	A	178	Total	C	N	O	S	0	0	0
			1382	876	246	253	7			
1	B	179	Total	C	N	O	S	0	0	0
			1389	881	247	254	7			
1	C	179	Total	C	N	O	S	0	0	0
			1389	881	247	254	7			
1	D	180	Total	C	N	O	S	0	0	0
			1393	883	248	255	7			

There are 36 discrepancies between the modelled and reference sequences:

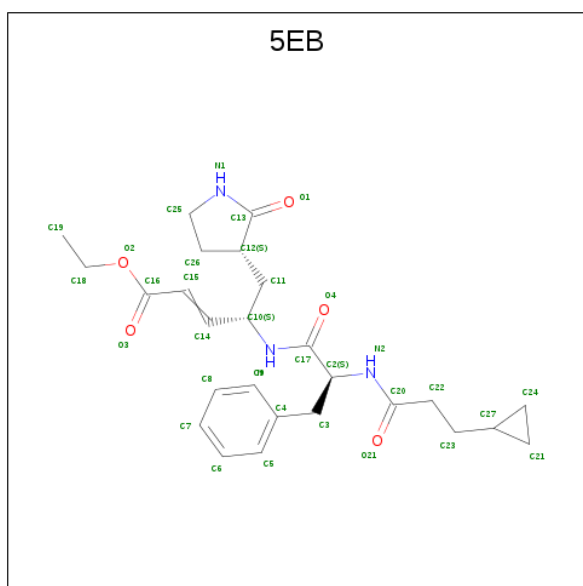
Chain	Residue	Modelled	Actual	Comment	Reference
A	0	MET	-	expression tag	UNP A9XG43
A	184	LEU	-	expression tag	UNP A9XG43
A	185	GLU	-	expression tag	UNP A9XG43
A	186	HIS	-	expression tag	UNP A9XG43
A	187	HIS	-	expression tag	UNP A9XG43
A	188	HIS	-	expression tag	UNP A9XG43
A	189	HIS	-	expression tag	UNP A9XG43
A	190	HIS	-	expression tag	UNP A9XG43
A	191	HIS	-	expression tag	UNP A9XG43
B	0	MET	-	expression tag	UNP A9XG43
B	184	LEU	-	expression tag	UNP A9XG43
B	185	GLU	-	expression tag	UNP A9XG43
B	186	HIS	-	expression tag	UNP A9XG43
B	187	HIS	-	expression tag	UNP A9XG43
B	188	HIS	-	expression tag	UNP A9XG43
B	189	HIS	-	expression tag	UNP A9XG43
B	190	HIS	-	expression tag	UNP A9XG43
B	191	HIS	-	expression tag	UNP A9XG43
C	0	MET	-	expression tag	UNP A9XG43
C	184	LEU	-	expression tag	UNP A9XG43
C	185	GLU	-	expression tag	UNP A9XG43

Continued on next page...

Continued from previous page...

Chain	Residue	Modelled	Actual	Comment	Reference
C	186	HIS	-	expression tag	UNP A9XG43
C	187	HIS	-	expression tag	UNP A9XG43
C	188	HIS	-	expression tag	UNP A9XG43
C	189	HIS	-	expression tag	UNP A9XG43
C	190	HIS	-	expression tag	UNP A9XG43
C	191	HIS	-	expression tag	UNP A9XG43
D	0	MET	-	expression tag	UNP A9XG43
D	184	LEU	-	expression tag	UNP A9XG43
D	185	GLU	-	expression tag	UNP A9XG43
D	186	HIS	-	expression tag	UNP A9XG43
D	187	HIS	-	expression tag	UNP A9XG43
D	188	HIS	-	expression tag	UNP A9XG43
D	189	HIS	-	expression tag	UNP A9XG43
D	190	HIS	-	expression tag	UNP A9XG43
D	191	HIS	-	expression tag	UNP A9XG43

- Molecule 2 is ethyl (2Z,4S)-4-{{[N-(3-cyclopropylpropanoyl)-L-phenylalanyl]amino}-5-[(3S)-2-oxopyrrolidin-3-yl]}pent-2-enoate (three-letter code: 5EB) (formula: C₂₆H₃₅N₃O₅).

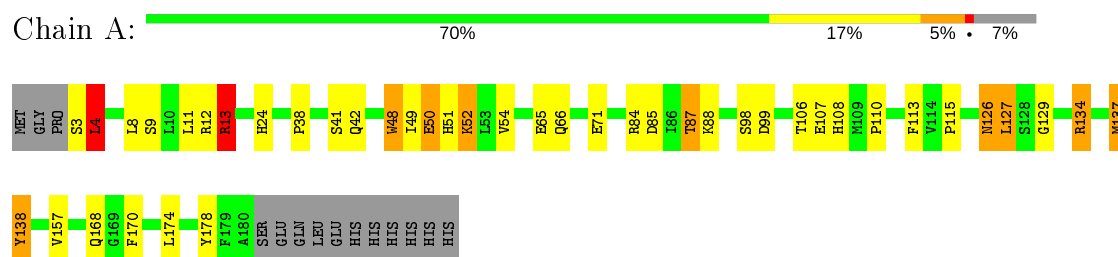


Mol	Chain	Residues	Atoms				ZeroOcc	AltConf
2	A	1	Total	C	N	O	0	0
			34	26	3	5		
2	B	1	Total	C	N	O	0	0
			34	26	3	5		

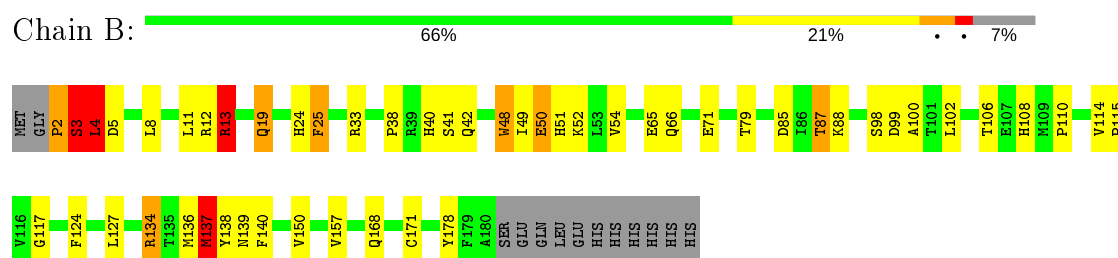
3 Residue-property plots [i](#)

These plots are drawn for all protein, RNA and DNA chains in the entry. The first graphic for a chain summarises the proportions of the various outlier classes displayed in the second graphic. The second graphic shows the sequence view annotated by issues in geometry and electron density. Residues are color-coded according to the number of geometric quality criteria for which they contain at least one outlier: green = 0, yellow = 1, orange = 2 and red = 3 or more. A red dot above a residue indicates a poor fit to the electron density ($RSRZ > 2$). Stretches of 2 or more consecutive residues without any outlier are shown as a green connector. Residues present in the sample, but not in the model, are shown in grey.

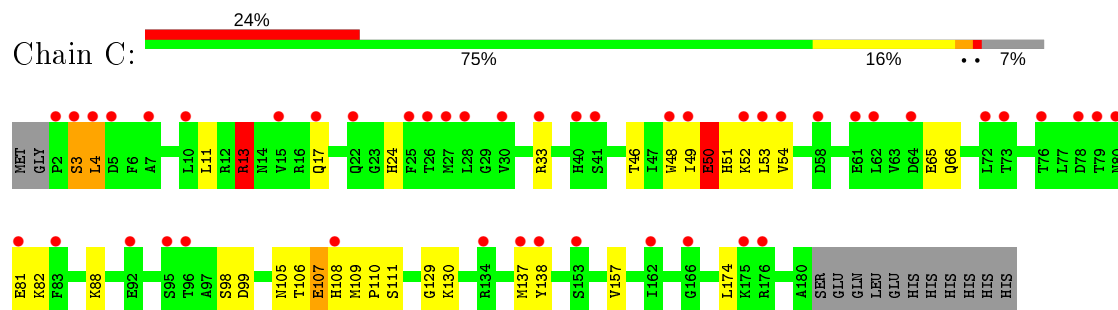
• Molecule 1: 3C proteinase



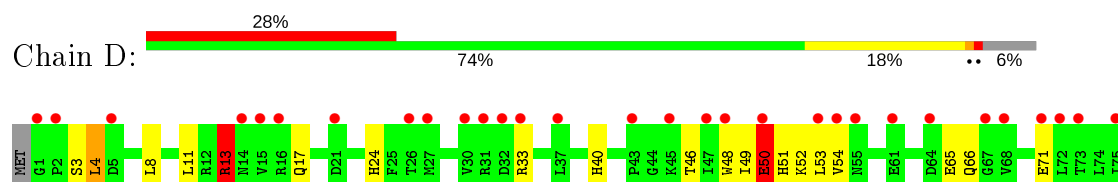
• Molecule 1: 3C proteinase

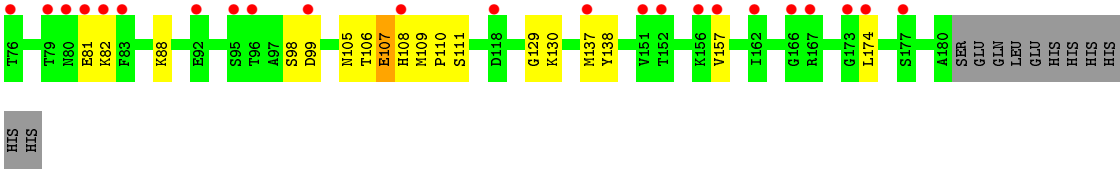


• Molecule 1: 3C proteinase



• Molecule 1: 3C proteinase





4 Data and refinement statistics

Property	Value	Source
Space group	P 21 21 21	Depositor
Cell constants a, b, c, α , β , γ	85.84Å 85.71Å 101.31Å 90.00° 90.00° 90.00°	Depositor
Resolution (Å)	42.89 – 3.01 42.85 – 3.01	Depositor EDS
% Data completeness (in resolution range)	96.0 (42.89-3.01) 96.0 (42.85-3.01)	Depositor EDS
R_{merge}	0.15	Depositor
R_{sym}	(Not available)	Depositor
$\langle I/\sigma(I) \rangle$ ¹	2.96 (at 3.01Å)	Xtriage
Refinement program	REFMAC 5.7.0032	Depositor
R, R_{free}	0.229 , 0.279 0.229 , 0.276	Depositor DCC
R_{free} test set	731 reflections (4.93%)	wwPDB-VP
Wilson B-factor (Å ²)	60.9	Xtriage
Anisotropy	0.251	Xtriage
Bulk solvent k_{sol} (e/Å ³), B_{sol} (Å ²)	0.34 , 48.1	EDS
L-test for twinning ²	$\langle L \rangle = 0.50$, $\langle L^2 \rangle = 0.33$	Xtriage
Estimated twinning fraction	0.430 for k,h,-l	Xtriage
F_o, F_c correlation	0.91	EDS
Total number of atoms	5621	wwPDB-VP
Average B, all atoms (Å ²)	91.0	wwPDB-VP

Xtriage's analysis on translational NCS is as follows: *The largest off-origin peak in the Patterson function is 4.93% of the height of the origin peak. No significant pseudotranslation is detected.*

¹Intensities estimated from amplitudes.

²Theoretical values of $\langle |L| \rangle$, $\langle L^2 \rangle$ for acentric reflections are 0.5, 0.333 respectively for untwinned datasets, and 0.375, 0.2 for perfectly twinned datasets.

5 Model quality

5.1 Standard geometry

Bond lengths and bond angles in the following residue types are not validated in this section: 5EB

The Z score for a bond length (or angle) is the number of standard deviations the observed value is removed from the expected value. A bond length (or angle) with $|Z| > 5$ is considered an outlier worth inspection. RMSZ is the root-mean-square of all Z scores of the bond lengths (or angles).

Mol	Chain	Bond lengths		Bond angles	
		RMSZ	# Z >5	RMSZ	# Z >5
1	A	0.83	6/1408 (0.4%)	0.96	8/1906 (0.4%)
1	B	0.97	10/1416 (0.7%)	1.11	9/1917 (0.5%)
1	C	0.67	3/1416 (0.2%)	0.91	5/1917 (0.3%)
1	D	0.68	3/1420 (0.2%)	0.91	6/1923 (0.3%)
All	All	0.80	22/5660 (0.4%)	0.98	28/7663 (0.4%)

Chiral center outliers are detected by calculating the chiral volume of a chiral center and verifying if the center is modelled as a planar moiety or with the opposite hand. A planarity outlier is detected by checking planarity of atoms in a peptide group, atoms in a mainchain group or atoms of a sidechain that are expected to be planar.

Mol	Chain	#Chirality outliers	#Planarity outliers
1	A	0	1
1	B	0	1
1	C	0	1
All	All	0	3

All (22) bond length outliers are listed below:

Mol	Chain	Res	Type	Atoms	Z	Observed(Å)	Ideal(Å)
1	A	48	TRP	CB-CG	-11.38	1.29	1.50
1	B	48	TRP	CB-CG	-11.05	1.30	1.50
1	B	25	PHE	CG-CD2	-9.38	1.24	1.38
1	D	48	TRP	CB-CG	-8.93	1.34	1.50
1	C	48	TRP	CB-CG	-8.85	1.34	1.50
1	D	13	ARG	CZ-NH1	-8.17	1.22	1.33
1	C	13	ARG	CZ-NH1	-8.13	1.22	1.33
1	B	13	ARG	NE-CZ	-7.71	1.23	1.33
1	B	25	PHE	CG-CD1	-7.47	1.27	1.38
1	B	140	PHE	CG-CD2	-7.18	1.27	1.38
1	A	13	ARG	CZ-NH1	-6.85	1.24	1.33

Continued on next page...

Continued from previous page...

Mol	Chain	Res	Type	Atoms	Z	Observed(Å)	Ideal(Å)
1	A	48	TRP	CE2-CZ2	-6.79	1.28	1.39
1	C	48	TRP	CE3-CZ3	-6.67	1.27	1.38
1	D	48	TRP	CE3-CZ3	-6.60	1.27	1.38
1	B	13	ARG	CZ-NH1	-6.55	1.24	1.33
1	B	140	PHE	CG-CD1	-6.55	1.28	1.38
1	B	48	TRP	CE2-CZ2	-5.96	1.29	1.39
1	B	25	PHE	CE1-CZ	-5.60	1.26	1.37
1	A	48	TRP	CD1-NE1	-5.41	1.28	1.38
1	B	48	TRP	CD1-NE1	-5.40	1.28	1.38
1	A	13	ARG	CZ-NH2	-5.22	1.26	1.33
1	A	48	TRP	CG-CD1	-5.03	1.29	1.36

All (28) bond angle outliers are listed below:

Mol	Chain	Res	Type	Atoms	Z	Observed(°)	Ideal(°)
1	B	13	ARG	NE-CZ-NH1	-20.74	109.93	120.30
1	B	13	ARG	CG-CD-NE	16.38	146.20	111.80
1	D	13	ARG	NE-CZ-NH2	16.29	128.44	120.30
1	C	13	ARG	NE-CZ-NH2	16.17	128.39	120.30
1	A	137	MET	CG-SD-CE	10.70	117.31	100.20
1	B	13	ARG	NH1-CZ-NH2	10.25	130.67	119.40
1	D	13	ARG	NE-CZ-NH1	-9.95	115.33	120.30
1	C	13	ARG	NE-CZ-NH1	-9.90	115.35	120.30
1	B	3	SER	CB-CA-C	-8.96	93.08	110.10
1	A	13	ARG	NE-CZ-NH2	-8.51	116.04	120.30
1	A	113	PHE	CB-CG-CD1	8.37	126.66	120.80
1	C	13	ARG	CG-CD-NE	7.13	126.77	111.80
1	D	13	ARG	CG-CD-NE	7.08	126.66	111.80
1	A	113	PHE	CB-CG-CD2	-7.05	115.86	120.80
1	A	134	ARG	NE-CZ-NH1	6.78	123.69	120.30
1	B	13	ARG	NE-CZ-NH2	-6.74	116.93	120.30
1	A	134	ARG	NE-CZ-NH2	-6.21	117.19	120.30
1	B	137	MET	CG-SD-CE	6.14	110.02	100.20
1	A	127	LEU	CB-CG-CD2	-6.09	100.65	111.00
1	D	4	LEU	CA-CB-CG	5.98	129.04	115.30
1	D	137	MET	CG-SD-CE	5.81	109.50	100.20
1	C	137	MET	CG-SD-CE	5.76	109.41	100.20
1	D	4	LEU	CB-CG-CD2	-5.70	101.31	111.00
1	B	48	TRP	N-CA-CB	-5.66	100.42	110.60
1	A	48	TRP	N-CA-CB	-5.64	100.45	110.60
1	B	134	ARG	NE-CZ-NH1	5.61	123.10	120.30
1	B	12	ARG	NE-CZ-NH1	5.47	123.04	120.30

Continued on next page...

Continued from previous page...

Mol	Chain	Res	Type	Atoms	Z	Observed(°)	Ideal(°)
1	C	4	LEU	CB-CG-CD2	-5.15	102.25	111.00

There are no chirality outliers.

All (3) planarity outliers are listed below:

Mol	Chain	Res	Type	Group
1	A	3	SER	Peptide
1	B	2	PRO	Peptide
1	C	3	SER	Peptide

5.2 Too-close contacts ⓘ

In the following table, the Non-H and H(model) columns list the number of non-hydrogen atoms and hydrogen atoms in the chain respectively. The H(added) column lists the number of hydrogen atoms added and optimized by MolProbity. The Clashes column lists the number of clashes within the asymmetric unit, whereas Symm-Clashes lists symmetry related clashes.

Mol	Chain	Non-H	H(model)	H(added)	Clashes	Symm-Clashes
1	A	1382	0	1398	53	0
1	B	1389	0	1406	59	0
1	C	1389	0	1406	85	0
1	D	1393	0	1411	87	0
2	A	34	0	0	3	0
2	B	34	0	0	3	0
All	All	5621	0	5621	196	0

The all-atom clashscore is defined as the number of clashes found per 1000 atoms (including hydrogen atoms). The all-atom clashscore for this structure is 17.

All (196) close contacts within the same asymmetric unit are listed below, sorted by their clash magnitude.

Atom-1	Atom-2	Interatomic distance (Å)	Clash overlap (Å)
1:A:13:ARG:HH12	1:A:84:ARG:CZ	1.34	1.38
1:B:19:GLN:OE1	1:B:24:HIS:NE2	1.56	1.34
1:B:19:GLN:OE1	1:B:24:HIS:CE1	1.89	1.24
1:C:110:PRO:HD3	1:D:107:GLU:OE1	1.36	1.21
1:C:105:ASN:OD1	1:D:51:HIS:CE1	1.95	1.20
1:C:107:GLU:OE1	1:D:110:PRO:HD3	1.40	1.18
1:C:51:HIS:CE1	1:D:105:ASN:OD1	1.98	1.14

Continued on next page...

Continued from previous page...

Atom-1	Atom-2	Interatomic distance (Å)	Clash overlap (Å)
1:B:2:PRO:O	1:B:3:SER:HB2	1.40	1.12
1:A:13:ARG:NH1	1:A:84:ARG:CZ	2.11	1.10
1:B:3:SER:HA	1:B:5:ASP:H	1.05	1.10
1:C:107:GLU:OE2	1:D:109:MET:N	1.85	1.10
1:C:109:MET:N	1:D:107:GLU:OE2	1.86	1.05
1:A:9:SER:OG	1:A:13:ARG:NH2	1.89	1.04
1:B:2:PRO:O	1:B:3:SER:CB	1.99	1.03
1:C:51:HIS:NE2	1:D:105:ASN:OD1	1.92	1.03
1:B:19:GLN:OE1	1:B:24:HIS:CD2	2.13	1.02
1:C:105:ASN:OD1	1:D:51:HIS:NE2	1.92	1.01
1:C:107:GLU:CD	1:D:110:PRO:HD3	1.82	0.99
1:C:110:PRO:HD3	1:D:107:GLU:CD	1.83	0.99
1:C:107:GLU:CG	1:D:107:GLU:O	2.13	0.96
1:B:3:SER:HA	1:B:5:ASP:N	1.78	0.96
1:C:107:GLU:O	1:D:107:GLU:CG	2.14	0.96
1:C:107:GLU:O	1:D:107:GLU:O	1.84	0.92
1:A:13:ARG:HH12	1:A:84:ARG:NH1	1.71	0.89
1:C:107:GLU:C	1:D:107:GLU:O	2.13	0.87
1:B:3:SER:H	1:B:4:LEU:CB	1.87	0.86
1:C:51:HIS:CE1	1:D:110:PRO:HB2	2.10	0.86
1:C:107:GLU:O	1:D:107:GLU:C	2.13	0.86
1:C:107:GLU:OE2	1:D:108:HIS:C	2.17	0.81
1:C:51:HIS:CE1	1:D:110:PRO:CB	2.63	0.81
1:A:127:LEU:CD2	2:A:201:5EB:C6	2.58	0.81
1:D:106:THR:HG22	1:D:108:HIS:H	1.46	0.80
1:B:106:THR:HG22	1:B:108:HIS:H	1.47	0.80
1:C:106:THR:HG22	1:C:108:HIS:H	1.45	0.80
1:C:108:HIS:C	1:D:107:GLU:OE2	2.21	0.80
1:C:110:PRO:HB2	1:D:51:HIS:CE1	2.15	0.80
1:C:107:GLU:O	1:D:107:GLU:HG2	1.82	0.79
1:B:3:SER:CA	1:B:5:ASP:H	1.92	0.79
1:C:107:GLU:HG2	1:D:107:GLU:O	1.81	0.79
1:C:108:HIS:ND1	1:D:108:HIS:ND1	2.32	0.78
1:A:127:LEU:HD21	2:A:201:5EB:C6	2.13	0.78
1:C:51:HIS:ND1	1:D:111:SER:N	2.33	0.77
1:C:110:PRO:CD	1:D:107:GLU:CD	2.52	0.77
1:A:134:ARG:NH1	1:A:178:TYR:OH	2.16	0.77
1:C:107:GLU:CD	1:D:110:PRO:CD	2.53	0.77
1:C:110:PRO:CB	1:D:51:HIS:CE1	2.69	0.76
1:C:111:SER:N	1:D:51:HIS:ND1	2.33	0.76
1:B:134:ARG:NH1	1:B:178:TYR:OH	2.18	0.76

Continued on next page...

Continued from previous page...

Atom-1	Atom-2	Interatomic distance (Å)	Clash overlap (Å)
1:C:110:PRO:CD	1:D:107:GLU:OE1	2.26	0.76
1:A:4:LEU:HG	1:B:8:LEU:CD2	2.16	0.75
1:D:13:ARG:HG3	1:D:13:ARG:HH11	1.52	0.75
1:C:13:ARG:HG3	1:C:13:ARG:HH11	1.50	0.75
1:C:106:THR:HG22	1:C:108:HIS:N	2.01	0.75
1:D:106:THR:HG22	1:D:108:HIS:N	2.01	0.74
1:C:107:GLU:O	1:D:107:GLU:CB	2.38	0.72
1:B:3:SER:N	1:B:4:LEU:CB	2.54	0.71
1:B:3:SER:N	1:B:4:LEU:HB2	2.05	0.71
1:A:9:SER:HG	1:A:13:ARG:NH2	1.84	0.71
1:B:3:SER:H	1:B:4:LEU:HB3	1.53	0.71
1:C:107:GLU:CB	1:D:107:GLU:O	2.37	0.71
1:A:38:PRO:O	1:A:41:SER:OG	2.09	0.70
1:B:3:SER:H	1:B:4:LEU:HB2	1.54	0.70
1:C:107:GLU:O	1:D:107:GLU:CD	2.31	0.69
1:B:85:ASP:OD1	1:B:87:THR:OG1	2.11	0.69
1:A:13:ARG:HH12	1:A:84:ARG:NH2	1.88	0.68
1:A:13:ARG:NH1	1:A:84:ARG:NE	2.41	0.68
1:C:107:GLU:CD	1:D:107:GLU:O	2.31	0.68
1:A:106:THR:HG22	1:A:108:HIS:H	1.58	0.68
1:A:8:LEU:HD12	1:B:8:LEU:CD1	2.24	0.68
1:A:8:LEU:HD12	1:B:8:LEU:HD12	1.75	0.67
1:C:51:HIS:ND1	1:D:110:PRO:HB2	2.08	0.67
1:A:85:ASP:OD1	1:A:87:THR:OG1	2.12	0.67
1:C:51:HIS:CE1	1:D:17:GLN:HE21	2.12	0.67
1:C:17:GLN:HE21	1:D:51:HIS:CE1	2.12	0.66
1:C:107:GLU:OE1	1:D:110:PRO:CD	2.31	0.66
1:C:51:HIS:HE1	1:D:110:PRO:CB	2.10	0.64
1:A:4:LEU:HG	1:B:8:LEU:HD21	1.78	0.64
1:A:137:MET:SD	1:A:168:GLN:NE2	2.71	0.64
1:B:127:LEU:CD2	2:B:201:5EB:C6	2.76	0.63
1:A:8:LEU:CD1	1:B:8:LEU:HD12	2.29	0.63
1:B:19:GLN:CD	1:B:24:HIS:CD2	2.72	0.62
1:B:24:HIS:HB3	1:B:106:THR:HG23	1.79	0.62
1:A:24:HIS:HB3	1:A:106:THR:HG23	1.80	0.62
1:C:110:PRO:HB2	1:D:51:HIS:ND1	2.13	0.62
1:B:19:GLN:CD	1:B:24:HIS:NE2	2.46	0.62
1:C:51:HIS:CE1	1:D:110:PRO:CA	2.83	0.62
1:C:110:PRO:HB3	1:D:107:GLU:HG3	1.81	0.61
1:C:110:PRO:CB	1:D:51:HIS:HE1	2.14	0.60
1:B:137:MET:SD	1:B:168:GLN:NE2	2.74	0.60

Continued on next page...

Continued from previous page...

Atom-1	Atom-2	Interatomic distance (Å)	Clash overlap (Å)
1:A:50:GLU:O	1:A:51:HIS:CB	2.50	0.59
1:A:42:GLN:NE2	1:D:129:GLY:HA2	2.17	0.58
1:A:4:LEU:HG	1:B:8:LEU:HD22	1.84	0.58
1:A:50:GLU:O	1:A:51:HIS:HB2	2.02	0.58
1:B:71:GLU:HA	1:B:71:GLU:OE1	2.03	0.58
1:C:107:GLU:CA	1:D:107:GLU:O	2.52	0.58
1:C:107:GLU:HG3	1:D:110:PRO:HB3	1.84	0.58
1:B:127:LEU:HD21	2:B:201:5EB:C6	2.35	0.57
1:C:49:ILE:O	1:C:51:HIS:N	2.38	0.57
1:B:13:ARG:HH11	1:B:13:ARG:CG	2.17	0.57
1:C:51:HIS:ND1	1:D:110:PRO:C	2.58	0.57
1:C:107:GLU:O	1:D:107:GLU:CA	2.53	0.56
1:C:107:GLU:HA	1:D:107:GLU:HG2	1.88	0.56
1:A:8:LEU:CD1	1:B:8:LEU:CD1	2.83	0.56
1:C:110:PRO:CA	1:D:51:HIS:CE1	2.88	0.56
1:A:110:PRO:HD2	1:B:115:PRO:CB	2.35	0.55
1:A:71:GLU:OE1	1:A:71:GLU:HA	2.07	0.55
1:A:49:ILE:HD12	1:A:54:VAL:HG21	1.88	0.55
1:A:42:GLN:NE2	1:D:129:GLY:CA	2.70	0.54
1:A:110:PRO:HD2	1:B:115:PRO:HB2	1.89	0.54
1:C:107:GLU:HG2	1:D:107:GLU:C	2.28	0.54
1:C:107:GLU:C	1:D:107:GLU:HG2	2.29	0.54
1:A:13:ARG:NH1	1:A:84:ARG:NH1	2.42	0.53
1:A:127:LEU:HD23	2:A:201:5EB:C6	2.38	0.53
1:C:107:GLU:HG2	1:D:107:GLU:HA	1.90	0.53
1:A:13:ARG:CB	1:A:13:ARG:HH11	2.22	0.53
1:B:50:GLU:O	1:B:51:HIS:CB	2.57	0.52
1:A:137:MET:HG2	1:A:138:TYR:N	2.25	0.52
1:B:38:PRO:O	1:B:41:SER:OG	2.26	0.52
1:A:9:SER:OG	1:A:13:ARG:CZ	2.56	0.52
1:C:110:PRO:C	1:D:51:HIS:ND1	2.63	0.52
1:A:115:PRO:HB2	1:B:110:PRO:HD2	1.91	0.52
1:A:115:PRO:CB	1:B:110:PRO:HD2	2.40	0.51
1:B:49:ILE:HD12	1:B:54:VAL:HG21	1.92	0.51
1:B:42:GLN:NE2	1:C:129:GLY:HA2	2.24	0.51
1:B:50:GLU:O	1:B:51:HIS:HB2	2.10	0.51
1:B:40:HIS:ND1	1:B:71:GLU:OE2	2.33	0.51
1:C:65:GLU:OE2	1:C:66:GLN:HG3	2.11	0.50
1:C:13:ARG:NH1	1:C:13:ARG:HG3	2.24	0.50
1:B:139:ASN:ND2	1:B:168:GLN:HE21	2.10	0.50
1:A:8:LEU:CD2	1:B:4:LEU:HG	2.41	0.50

Continued on next page...

Continued from previous page...

Atom-1	Atom-2	Interatomic distance (Å)	Clash overlap (Å)
1:D:49:ILE:O	1:D:51:HIS:N	2.40	0.49
1:A:157:VAL:HG12	1:A:174:LEU:HD12	1.94	0.49
1:B:42:GLN:NE2	1:C:129:GLY:CA	2.75	0.49
1:D:65:GLU:OE2	1:D:66:GLN:HG3	2.12	0.49
1:C:107:GLU:C	1:D:107:GLU:OE2	2.51	0.49
1:A:65:GLU:HG2	1:A:66:GLN:N	2.28	0.48
1:C:107:GLU:OE2	1:D:107:GLU:C	2.51	0.48
1:D:13:ARG:NH1	1:D:13:ARG:HG3	2.24	0.48
1:A:13:ARG:HH11	1:A:13:ARG:HB2	1.77	0.48
1:C:107:GLU:OE2	1:D:109:MET:CA	2.61	0.47
1:B:19:GLN:OE1	1:B:24:HIS:CG	2.63	0.47
1:B:13:ARG:HH11	1:B:13:ARG:HG2	1.80	0.47
1:B:3:SER:CA	1:B:5:ASP:N	2.62	0.47
1:D:157:VAL:HG12	1:D:174:LEU:HD12	1.97	0.47
1:B:2:PRO:O	1:B:3:SER:HB3	2.06	0.46
1:C:49:ILE:HD12	1:C:54:VAL:HG21	1.98	0.46
1:D:49:ILE:HD12	1:D:54:VAL:HG21	1.98	0.46
1:A:13:ARG:HH22	1:A:84:ARG:NH1	2.14	0.46
1:A:137:MET:HG3	1:A:170:PHE:CE1	2.50	0.46
1:C:81:GLU:HG2	1:C:82:LYS:N	2.31	0.46
1:D:81:GLU:HG2	1:D:82:LYS:N	2.31	0.45
1:D:46:THR:HB	1:D:53:LEU:HD11	1.98	0.45
1:C:107:GLU:CA	1:D:107:GLU:HG2	2.47	0.45
1:C:157:VAL:HG12	1:C:174:LEU:HD12	1.98	0.45
1:C:51:HIS:CE1	1:D:17:GLN:NE2	2.83	0.45
1:C:108:HIS:HA	1:D:108:HIS:HD1	1.82	0.45
1:A:106:THR:HG22	1:A:108:HIS:N	2.30	0.45
1:C:111:SER:HB2	1:D:51:HIS:HA	1.48	0.45
1:D:106:THR:CG2	1:D:107:GLU:N	2.80	0.44
1:C:109:MET:CA	1:D:107:GLU:OE2	2.62	0.44
1:C:106:THR:CG2	1:C:107:GLU:N	2.80	0.44
1:C:51:HIS:HE1	1:D:110:PRO:CA	2.29	0.44
1:D:40:HIS:ND1	1:D:71:GLU:OE2	2.49	0.44
1:B:25:PHE:CZ	1:B:41:SER:HA	2.53	0.44
1:C:51:HIS:HA	1:D:111:SER:HB2	1.52	0.44
1:C:46:THR:HB	1:C:53:LEU:HD11	2.00	0.43
1:B:8:LEU:HD23	1:B:8:LEU:HA	1.87	0.43
1:A:8:LEU:HD12	1:B:8:LEU:HD11	1.97	0.43
1:C:107:GLU:HG2	1:D:107:GLU:CA	2.48	0.43
1:B:106:THR:HG22	1:B:108:HIS:N	2.23	0.43
1:B:136:MET:HB2	1:B:171:CYS:SG	2.59	0.42

Continued on next page...

Continued from previous page...

Atom-1	Atom-2	Interatomic distance (Å)	Clash overlap (Å)
1:C:24:HIS:HB3	1:C:106:THR:HG23	2.01	0.42
1:A:52:LYS:O	1:A:52:LYS:HG3	2.19	0.42
1:B:150:VAL:CG1	1:B:157:VAL:HG13	2.50	0.42
1:D:24:HIS:HB3	1:D:106:THR:HG23	2.00	0.42
1:A:8:LEU:HD23	1:A:8:LEU:HA	1.93	0.42
1:C:17:GLN:NE2	1:D:51:HIS:CE1	2.84	0.42
1:C:51:HIS:CE1	1:D:110:PRO:HA	2.54	0.42
1:A:12:ARG:HH21	1:A:13:ARG:HE	1.67	0.42
1:D:8:LEU:HD23	1:D:8:LEU:HA	1.88	0.41
1:C:107:GLU:HG3	1:D:110:PRO:HG3	2.02	0.41
1:B:100:ALA:N	1:B:117:GLY:O	2.34	0.41
1:B:65:GLU:HG2	1:B:66:GLN:N	2.34	0.41
1:C:106:THR:O	1:D:107:GLU:OE2	2.39	0.41
1:A:65:GLU:OE2	1:A:66:GLN:HG3	2.20	0.41
1:C:51:HIS:CE1	1:D:111:SER:N	2.89	0.41
1:B:124:PHE:CD1	1:B:124:PHE:C	2.94	0.41
1:C:108:HIS:HA	1:D:108:HIS:ND1	2.35	0.41
1:A:106:THR:HG22	1:A:107:GLU:N	2.36	0.41
1:B:102:LEU:HB3	1:B:114:VAL:HB	2.02	0.41
2:B:201:5EB:C26	2:B:201:5EB:C17	2.99	0.41
1:A:13:ARG:NH1	1:A:13:ARG:HB2	2.36	0.41
1:A:8:LEU:HD21	1:B:4:LEU:HG	2.01	0.41
1:A:126:ASN:HD21	1:A:129:GLY:H	1.69	0.40
1:C:110:PRO:HB2	1:D:50:GLU:O	2.22	0.40
1:C:50:GLU:O	1:D:110:PRO:HB2	2.22	0.40

There are no symmetry-related clashes.

5.3 Torsion angles

5.3.1 Protein backbone

In the following table, the Percentiles column shows the percent Ramachandran outliers of the chain as a percentile score with respect to all X-ray entries followed by that with respect to entries of similar resolution.

The Analysed column shows the number of residues for which the backbone conformation was analysed, and the total number of residues.

Mol	Chain	Analysed	Favoured	Allowed	Outliers	Percentiles
1	A	176/192 (92%)	163 (93%)	12 (7%)	1 (1%)	25 62

Continued on next page...

Continued from previous page...

Mol	Chain	Analysed	Favoured	Allowed	Outliers	Percentiles	
1	B	177/192 (92%)	164 (93%)	11 (6%)	2 (1%)	14	48
1	C	177/192 (92%)	168 (95%)	8 (4%)	1 (1%)	25	62
1	D	178/192 (93%)	169 (95%)	8 (4%)	1 (1%)	25	62
All	All	708/768 (92%)	664 (94%)	39 (6%)	5 (1%)	22	59

All (5) Ramachandran outliers are listed below:

Mol	Chain	Res	Type
1	A	4	LEU
1	B	3	SER
1	B	4	LEU
1	C	50	GLU
1	D	50	GLU

5.3.2 Protein sidechains ⓘ

In the following table, the Percentiles column shows the percent sidechain outliers of the chain as a percentile score with respect to all X-ray entries followed by that with respect to entries of similar resolution.

The Analysed column shows the number of residues for which the sidechain conformation was analysed, and the total number of residues.

Mol	Chain	Analysed	Rotameric	Outliers	Percentiles	
1	A	153/166 (92%)	141 (92%)	12 (8%)	12	40
1	B	154/166 (93%)	138 (90%)	16 (10%)	7	26
1	C	154/166 (93%)	141 (92%)	13 (8%)	11	37
1	D	154/166 (93%)	141 (92%)	13 (8%)	11	37
All	All	615/664 (93%)	561 (91%)	54 (9%)	10	34

All (54) residues with a non-rotameric sidechain are listed below:

Mol	Chain	Res	Type
1	A	4	LEU
1	A	11	LEU
1	A	13	ARG
1	A	48	TRP
1	A	50	GLU
1	A	52	LYS

Continued on next page...

Continued from previous page...

Mol	Chain	Res	Type
1	A	87	THR
1	A	88	LYS
1	A	98	SER
1	A	99	ASP
1	A	126	ASN
1	A	138	TYR
1	B	3	SER
1	B	4	LEU
1	B	11	LEU
1	B	13	ARG
1	B	19	GLN
1	B	33	ARG
1	B	48	TRP
1	B	50	GLU
1	B	52	LYS
1	B	79	THR
1	B	87	THR
1	B	88	LYS
1	B	98	SER
1	B	99	ASP
1	B	137	MET
1	B	138	TYR
1	C	3	SER
1	C	4	LEU
1	C	11	LEU
1	C	13	ARG
1	C	33	ARG
1	C	50	GLU
1	C	52	LYS
1	C	88	LYS
1	C	98	SER
1	C	99	ASP
1	C	107	GLU
1	C	130	LYS
1	C	138	TYR
1	D	3	SER
1	D	4	LEU
1	D	11	LEU
1	D	13	ARG
1	D	33	ARG
1	D	50	GLU
1	D	52	LYS

Continued on next page...

Continued from previous page...

Mol	Chain	Res	Type
1	D	88	LYS
1	D	98	SER
1	D	99	ASP
1	D	107	GLU
1	D	130	LYS
1	D	138	TYR

Some sidechains can be flipped to improve hydrogen bonding and reduce clashes. All (14) such sidechains are listed below:

Mol	Chain	Res	Type
1	A	22	GLN
1	A	42	GLN
1	A	126	ASN
1	A	168	GLN
1	B	22	GLN
1	B	42	GLN
1	B	126	ASN
1	B	139	ASN
1	C	22	GLN
1	C	126	ASN
1	C	139	ASN
1	D	22	GLN
1	D	126	ASN
1	D	139	ASN

5.3.3 RNA ⓘ

There are no RNA molecules in this entry.

5.4 Non-standard residues in protein, DNA, RNA chains ⓘ

There are no non-standard protein/DNA/RNA residues in this entry.

5.5 Carbohydrates ⓘ

There are no carbohydrates in this entry.

5.6 Ligand geometry

2 ligands are modelled in this entry.

In the following table, the Counts columns list the number of bonds (or angles) for which Mogul statistics could be retrieved, the number of bonds (or angles) that are observed in the model and the number of bonds (or angles) that are defined in the Chemical Component Dictionary. The Link column lists molecule types, if any, to which the group is linked. The Z score for a bond length (or angle) is the number of standard deviations the observed value is removed from the expected value. A bond length (or angle) with $|Z| > 2$ is considered an outlier worth inspection. RMSZ is the root-mean-square of all Z scores of the bond lengths (or angles).

Mol	Type	Chain	Res	Link	Bond lengths			Bond angles		
					Counts	RMSZ	# Z > 2	Counts	RMSZ	# Z > 2
2	5EB	A	201	1	36,36,36	1.63	4 (11%)	41,47,47	1.98	10 (24%)
2	5EB	B	201	1	36,36,36	1.72	4 (11%)	41,47,47	1.80	11 (26%)

In the following table, the Chirals column lists the number of chiral outliers, the number of chiral centers analysed, the number of these observed in the model and the number defined in the Chemical Component Dictionary. Similar counts are reported in the Torsion and Rings columns. '-' means no outliers of that kind were identified.

Mol	Type	Chain	Res	Link	Chirals	Torsions	Rings
2	5EB	A	201	1	-	19/33/45/45	0/3/3/3
2	5EB	B	201	1	-	16/33/45/45	0/3/3/3

All (8) bond length outliers are listed below:

Mol	Chain	Res	Type	Atoms	Z	Observed(Å)	Ideal(Å)
2	B	201	5EB	C15-C14	7.21	1.49	1.32
2	A	201	5EB	C15-C14	6.55	1.47	1.32
2	B	201	5EB	O2-C16	3.69	1.43	1.34
2	A	201	5EB	C17-N	-3.60	1.26	1.34
2	A	201	5EB	C20-N2	-3.37	1.26	1.34
2	B	201	5EB	C17-N	-3.24	1.26	1.34
2	B	201	5EB	C20-N2	-2.97	1.27	1.34
2	A	201	5EB	O2-C16	2.96	1.41	1.34

All (21) bond angle outliers are listed below:

Mol	Chain	Res	Type	Atoms	Z	Observed(°)	Ideal(°)
2	A	201	5EB	C10-C14-C15	-7.82	112.51	125.78
2	B	201	5EB	C10-C14-C15	-5.89	115.77	125.78
2	A	201	5EB	C7-C6-C5	3.99	126.26	120.19

Continued on next page...

Continued from previous page...

Mol	Chain	Res	Type	Atoms	Z	Observed(°)	Ideal(°)
2	B	201	5EB	C7-C6-C5	3.54	125.58	120.19
2	A	201	5EB	C14-C15-C16	-3.43	114.92	122.62
2	B	201	5EB	C2-N2-C20	3.32	130.18	121.65
2	A	201	5EB	C22-C20-N2	-2.86	110.88	115.83
2	A	201	5EB	C2-N2-C20	2.72	128.65	121.65
2	B	201	5EB	O1-C13-C12	-2.64	123.13	126.23
2	B	201	5EB	C14-C10-N	-2.61	105.61	110.53
2	B	201	5EB	C22-C20-N2	-2.53	111.45	115.83
2	B	201	5EB	O3-C16-C15	-2.45	115.00	123.58
2	B	201	5EB	C17-C2-N2	-2.45	104.49	111.16
2	A	201	5EB	O21-C20-C22	2.44	126.49	122.02
2	A	201	5EB	C17-C2-N2	-2.30	104.89	111.16
2	B	201	5EB	O2-C16-O3	2.27	127.91	122.93
2	B	201	5EB	C14-C15-C16	-2.22	117.63	122.62
2	A	201	5EB	C26-C12-C13	2.21	105.75	102.88
2	A	201	5EB	O1-C13-C12	-2.18	123.67	126.23
2	A	201	5EB	C6-C5-C4	-2.14	117.36	120.63
2	B	201	5EB	O2-C16-C15	2.01	116.90	111.55

There are no chirality outliers.

All (35) torsion outliers are listed below:

Mol	Chain	Res	Type	Atoms
2	A	201	5EB	C20-C22-C23-C27
2	A	201	5EB	C22-C23-C27-C24
2	A	201	5EB	C10-C14-C15-C16
2	A	201	5EB	C15-C16-O2-C18
2	B	201	5EB	C22-C23-C27-C24
2	B	201	5EB	C10-C14-C15-C16
2	B	201	5EB	C3-C2-N2-C20
2	A	201	5EB	C19-C18-O2-C16
2	A	201	5EB	O3-C16-O2-C18
2	B	201	5EB	C20-C22-C23-C27
2	A	201	5EB	N2-C2-C3-C4
2	A	201	5EB	C17-C2-C3-C4
2	B	201	5EB	N2-C2-C3-C4
2	A	201	5EB	C3-C2-N2-C20
2	B	201	5EB	C15-C16-O2-C18
2	B	201	5EB	C14-C15-C16-O2
2	A	201	5EB	C14-C15-C16-O2
2	B	201	5EB	C14-C15-C16-O3
2	B	201	5EB	C2-C3-C4-C5

Continued on next page...

Continued from previous page...

Mol	Chain	Res	Type	Atoms
2	A	201	5EB	C2-C3-C4-C5
2	B	201	5EB	C2-C3-C4-C9
2	A	201	5EB	C2-C3-C4-C9
2	A	201	5EB	C14-C15-C16-O3
2	A	201	5EB	N-C17-C2-N2
2	A	201	5EB	O4-C17-C2-N2
2	A	201	5EB	C22-C23-C27-C21
2	A	201	5EB	N-C10-C14-C15
2	B	201	5EB	C22-C23-C27-C21
2	B	201	5EB	O3-C16-O2-C18
2	B	201	5EB	N-C17-C2-N2
2	B	201	5EB	O4-C17-C2-N2
2	A	201	5EB	C17-C2-N2-C20
2	B	201	5EB	C17-C2-C3-C4
2	B	201	5EB	N-C10-C11-C12
2	A	201	5EB	O4-C17-C2-C3

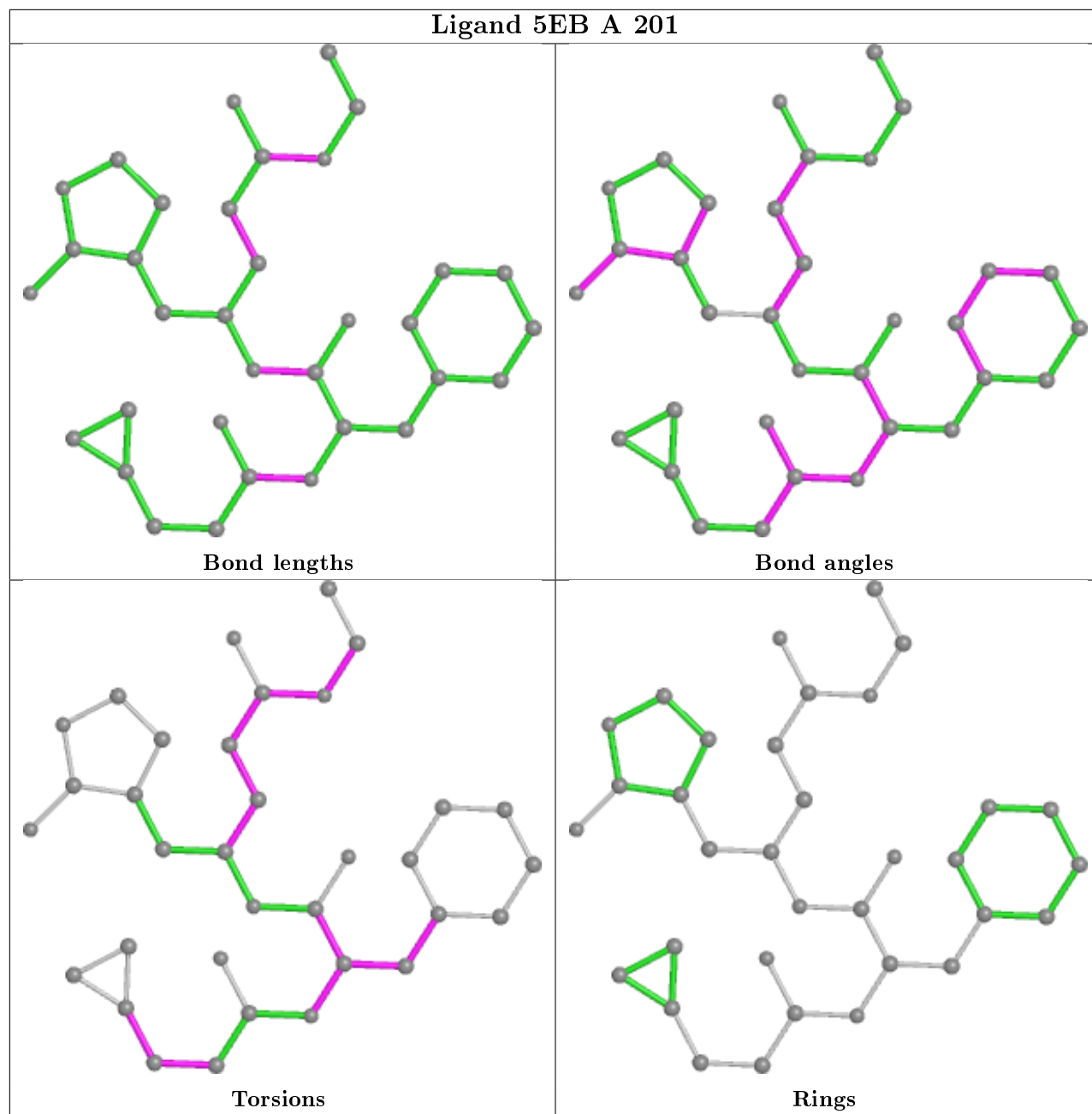
There are no ring outliers.

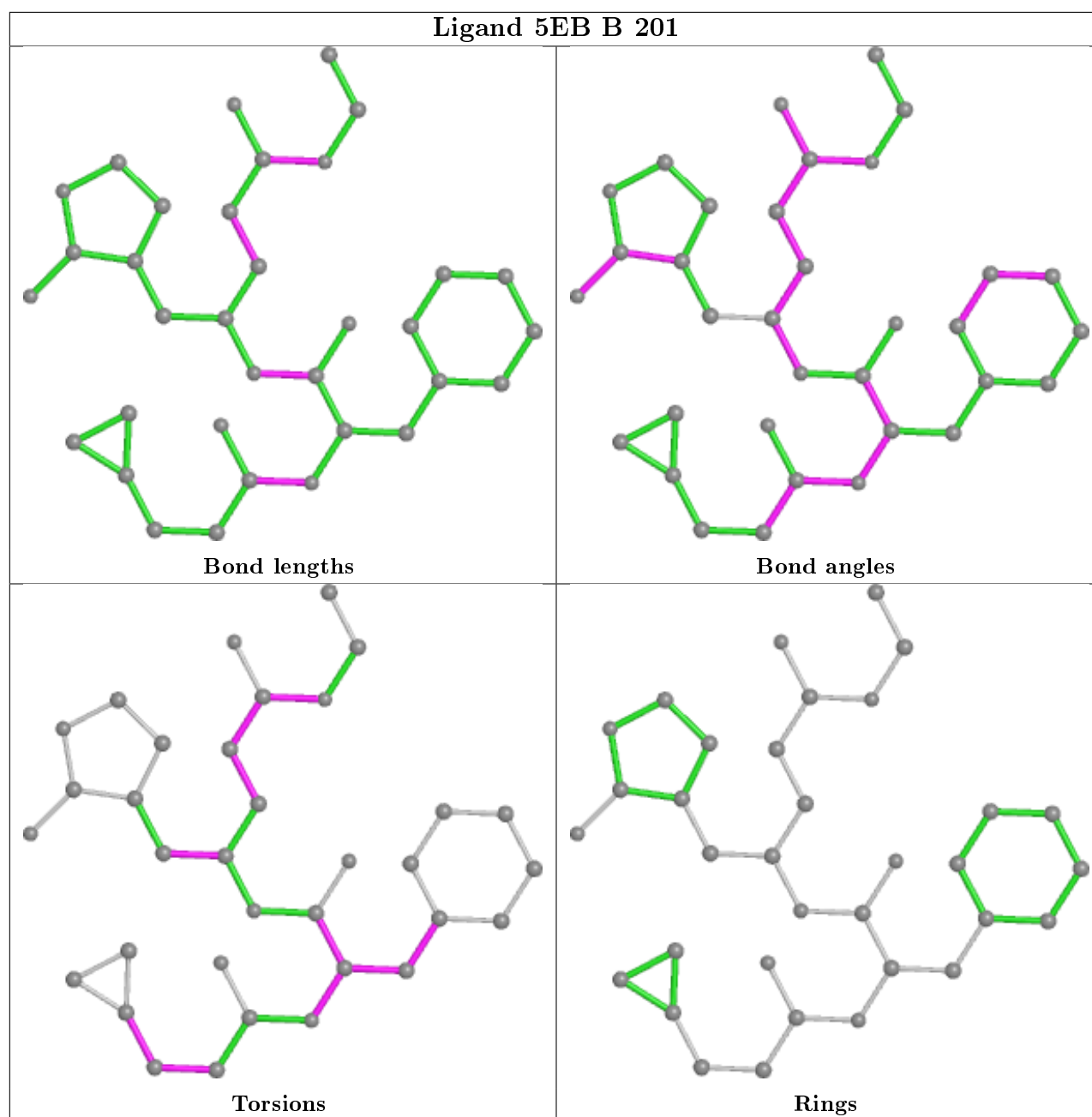
2 monomers are involved in 6 short contacts:

Mol	Chain	Res	Type	Clashes	Symm-Clashes
2	A	201	5EB	3	0
2	B	201	5EB	3	0

The following is a two-dimensional graphical depiction of Mogul quality analysis of bond lengths, bond angles, torsion angles, and ring geometry for all instances of the Ligand of Interest. In addition, ligands with molecular weight > 250 and outliers as shown on the validation Tables will also be included. For torsion angles, if less than 5% of the Mogul distribution of torsion angles is within 10 degrees of the torsion angle in question, then that torsion angle is considered an outlier. Any bond that is central to one or more torsion angles identified as an outlier by Mogul will be highlighted in the graph. For rings, the root-mean-square deviation (RMSD) between the ring in question and similar rings identified by Mogul is calculated over all ring torsion angles. If the average RMSD is greater than 60 degrees and the minimal RMSD between the ring in question and any Mogul-identified rings is also greater than 60 degrees, then that ring is considered an outlier. The outliers are highlighted in purple. The color gray indicates Mogul did not find sufficient equivalents in the CSD to analyse the geometry.

Ligand 5EB A 201





5.7 Other polymers [i](#)

There are no such residues in this entry.

5.8 Polymer linkage issues [i](#)

There are no chain breaks in this entry.

6 Fit of model and data ⓘ

6.1 Protein, DNA and RNA chains ⓘ

In the following table, the column labelled ‘#RSRZ> 2’ contains the number (and percentage) of RSRZ outliers, followed by percent RSRZ outliers for the chain as percentile scores relative to all X-ray entries and entries of similar resolution. The OWAB column contains the minimum, median, 95th percentile and maximum values of the occupancy-weighted average B-factor per residue. The column labelled ‘Q< 0.9’ lists the number of (and percentage) of residues with an average occupancy less than 0.9.

Mol	Chain	Analysed	<RSRZ>	#RSRZ>2		OWAB(Å ²)	Q<0.9
1	A	178/192 (92%)	-0.27	0	100 100	30, 46, 79, 97	0
1	B	179/192 (93%)	-0.25	0	100 100	31, 46, 80, 148	0
1	C	179/192 (93%)	1.29	46 (25%)	0 0	69, 133, 173, 216	0
1	D	180/192 (93%)	1.44	53 (29%)	0 0	68, 131, 180, 218	0
All	All	716/768 (93%)	0.56	99 (13%)	2 1	30, 86, 169, 218	0

All (99) RSRZ outliers are listed below:

Mol	Chain	Res	Type	RSRZ
1	D	80	ASN	9.5
1	D	32	ASP	7.3
1	D	166	GLY	5.5
1	D	92	GLU	5.5
1	C	25	PHE	5.2
1	C	53	LEU	5.0
1	C	73	THR	4.6
1	C	3	SER	4.6
1	D	73	THR	4.6
1	C	4	LEU	4.5
1	C	2	PRO	4.4
1	D	72	LEU	4.3
1	C	166	GLY	4.2
1	C	95	SER	4.1
1	C	83	PHE	4.0
1	D	81	GLU	4.0
1	C	5	ASP	3.9
1	C	137	MET	3.9
1	D	83	PHE	3.8
1	D	50	GLU	3.7
1	D	96	THR	3.7

Continued on next page...

Continued from previous page...

Mol	Chain	Res	Type	RSRZ
1	D	118	ASP	3.7
1	C	96	THR	3.7
1	D	64	ASP	3.7
1	D	47	ILE	3.6
1	C	80	ASN	3.4
1	D	26	THR	3.4
1	D	162	ILE	3.3
1	D	33	ARG	3.3
1	D	151	VAL	3.3
1	D	95	SER	3.3
1	C	61	GLU	3.2
1	D	76	THR	3.2
1	C	48	TRP	3.2
1	D	79	THR	3.2
1	C	81	GLU	3.2
1	D	1	GLY	3.1
1	D	55	ASN	3.1
1	D	157	VAL	3.0
1	C	41	SER	3.0
1	C	54	VAL	3.0
1	C	30	VAL	3.0
1	D	53	LEU	3.0
1	D	27	MET	3.0
1	C	28	LEU	3.0
1	D	31	ARG	3.0
1	D	173	GLY	3.0
1	C	79	THR	2.9
1	D	54	VAL	2.9
1	D	67	GLY	2.9
1	C	22	GLN	2.9
1	C	15	VAL	2.9
1	D	14	ASN	2.8
1	D	5	ASP	2.8
1	D	137	MET	2.8
1	C	52	LYS	2.8
1	C	176	ARG	2.8
1	D	2	PRO	2.8
1	D	15	VAL	2.7
1	C	138	TYR	2.7
1	C	64	ASP	2.7
1	C	76	THR	2.7
1	C	108	HIS	2.7

Continued on next page...

Continued from previous page...

Mol	Chain	Res	Type	RSRZ
1	C	27	MET	2.6
1	D	75	ILE	2.6
1	D	156	LYS	2.5
1	D	37	LEU	2.5
1	C	49	ILE	2.5
1	D	152	THR	2.5
1	C	58	ASP	2.5
1	C	92	GLU	2.5
1	C	26	THR	2.5
1	D	82	LYS	2.3
1	D	43	PRO	2.3
1	C	33	ARG	2.3
1	D	45	LYS	2.3
1	D	174	LEU	2.3
1	D	108	HIS	2.3
1	C	162	ILE	2.3
1	D	99	ASP	2.2
1	C	62	LEU	2.2
1	C	175	LYS	2.2
1	D	48	TRP	2.1
1	D	68	VAL	2.1
1	C	17	GLN	2.1
1	D	61	GLU	2.1
1	C	134	ARG	2.1
1	C	10	LEU	2.1
1	C	7	ALA	2.1
1	C	153	SER	2.1
1	D	30	VAL	2.1
1	C	40	HIS	2.1
1	D	16	ARG	2.1
1	C	72	LEU	2.0
1	D	167	ARG	2.0
1	C	78	ASP	2.0
1	D	21	ASP	2.0
1	D	177	SER	2.0
1	D	71	GLU	2.0

6.2 Non-standard residues in protein, DNA, RNA chains ⓘ

There are no non-standard protein/DNA/RNA residues in this entry.

6.3 Carbohydrates

There are no carbohydrates in this entry.

6.4 Ligands

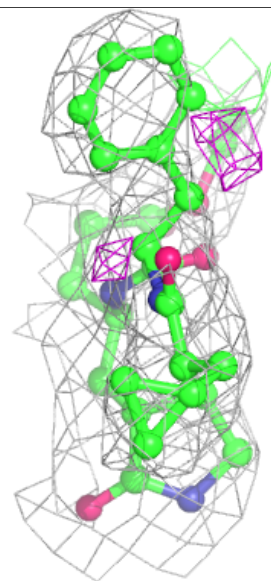
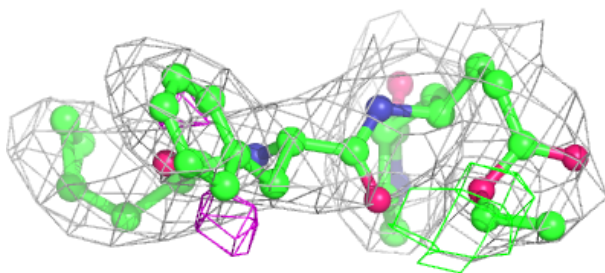
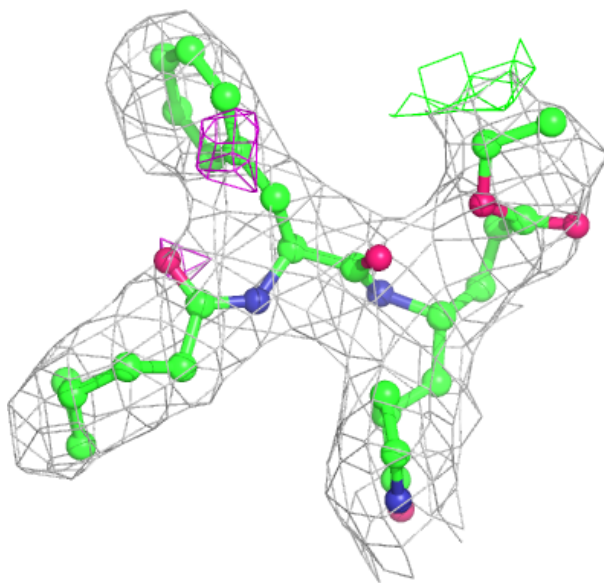
In the following table, the Atoms column lists the number of modelled atoms in the group and the number defined in the chemical component dictionary. The B-factors column lists the minimum, median, 95th percentile and maximum values of B factors of atoms in the group. The column labelled 'Q< 0.9' lists the number of atoms with occupancy less than 0.9.

Mol	Type	Chain	Res	Atoms	RSCC	RSR	B-factors(\AA^2)	Q<0.9
2	5EB	A	201	34/34	0.91	0.23	41,50,74,80	0
2	5EB	B	201	34/34	0.94	0.23	44,54,71,94	0

The following is a graphical depiction of the model fit to experimental electron density of all instances of the Ligand of Interest. In addition, ligands with molecular weight > 250 and outliers as shown on the geometry validation Tables will also be included. Each fit is shown from different orientation to approximate a three-dimensional view.

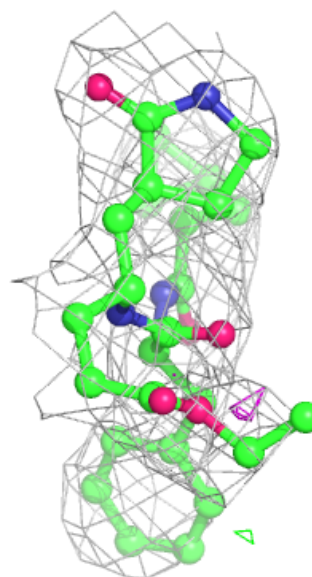
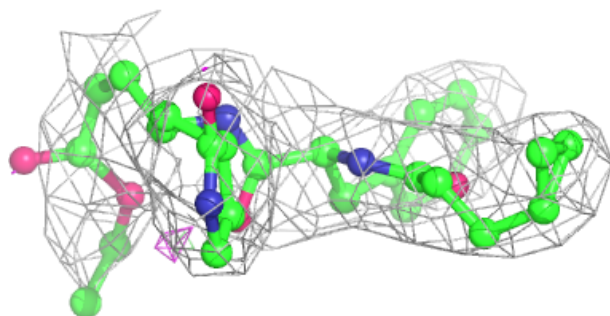
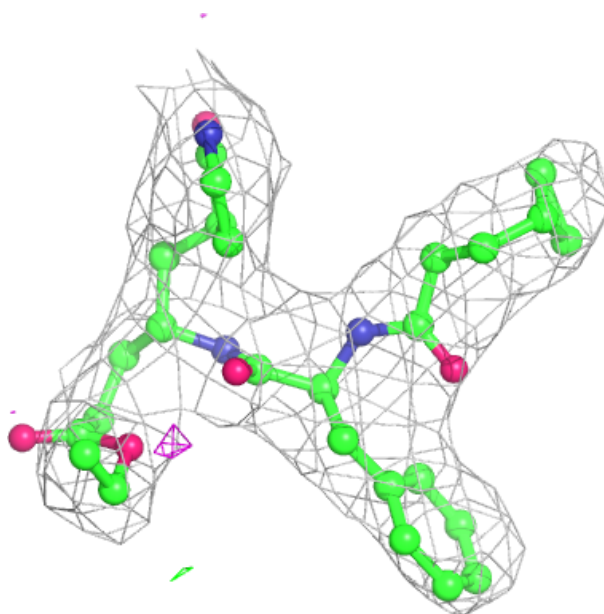
Electron density around 5EB A 201:

$2mF_o-DF_c$ (at 0.7 rmsd) in gray
 mF_o-DF_c (at 3 rmsd) in purple (negative)
and green (positive)



Electron density around 5EB B 201:

$2mF_o-DF_c$ (at 0.7 rmsd) in gray
 mF_o-DF_c (at 3 rmsd) in purple (negative)
and green (positive)



6.5 Other polymers ⓘ

There are no such residues in this entry.