



# wwPDB X-ray Structure Validation Summary Report ⓘ

May 15, 2020 – 05:06 am BST

PDB ID : 2DQN  
Title : Structure of tRNA-Dependent Amidotransferase GatCAB complexed with Asn  
Authors : Nakamura, A.; Yao, M.; Tanaka, I.  
Deposited on : 2006-05-29  
Resolution : 2.55 Å(reported)

This is a wwPDB X-ray Structure Validation Summary Report for a publicly released PDB entry.

We welcome your comments at [validation@mail.wwpdb.org](mailto:validation@mail.wwpdb.org)

A user guide is available at

<https://www.wwpdb.org/validation/2017/XrayValidationReportHelp>

with specific help available everywhere you see the ⓘ symbol.

---

The following versions of software and data (see [references ⓘ](#)) were used in the production of this report:

MolProbity	:	4.02b-467
Xtriage (Phenix)	:	1.13
EDS	:	2.11
Percentile statistics	:	20191225.v01 (using entries in the PDB archive December 25th 2019)
Refmac	:	5.8.0158
CCP4	:	7.0.044 (Gargrove)
Ideal geometry (proteins)	:	Engh & Huber (2001)
Ideal geometry (DNA, RNA)	:	Parkinson et al. (1996)
Validation Pipeline (wwPDB-VP)	:	2.11

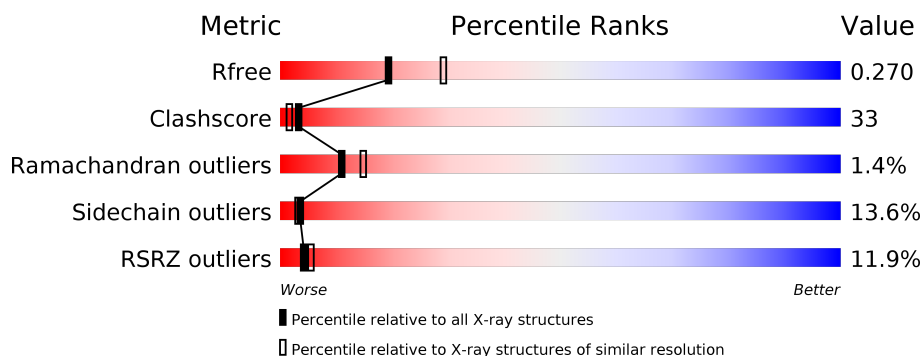
# 1 Overall quality at a glance

The following experimental techniques were used to determine the structure:

## *X-RAY DIFFRACTION*

The reported resolution of this entry is 2.55 Å.

Percentile scores (ranging between 0-100) for global validation metrics of the entry are shown in the following graphic. The table shows the number of entries on which the scores are based.



Metric	Whole archive (#Entries)	Similar resolution (#Entries, resolution range(Å))
$R_{free}$	130704	1284 (2.56-2.52)
Clashscore	141614	1332 (2.56-2.52)
Ramachandran outliers	138981	1315 (2.56-2.52)
Sidechain outliers	138945	1315 (2.56-2.52)
RSRZ outliers	127900	1272 (2.56-2.52)

The table below summarises the geometric issues observed across the polymeric chains and their fit to the electron density. The red, orange, yellow and green segments on the lower bar indicate the fraction of residues that contain outliers for  $\geq 3$ , 2, 1 and 0 types of geometric quality criteria respectively. A grey segment represents the fraction of residues that are not modelled. The numeric value for each fraction is indicated below the corresponding segment, with a dot representing fractions  $\leq 5\%$ . The upper red bar (where present) indicates the fraction of residues that have poor fit to the electron density. The numeric value is given above the bar.

Mol	Chain	Length	Quality of chain
1	A	485	<div> <div>3%</div> <div> <div></div> <div>57%</div> <div>36%</div> <div>7%</div> </div> </div>
2	B	483	<div> <div>18%</div> <div> <div></div> <div>36%</div> <div>38%</div> <div>10%</div> <div>16%</div> </div> </div>
3	C	100	<div> <div>16%</div> <div> <div></div> <div>50%</div> <div>36%</div> <div>9%</div> <div>• •</div> </div> </div>

## 2 Entry composition

There are 6 unique types of molecules in this entry. The entry contains 7925 atoms, of which 0 are hydrogens and 0 are deuteriums.

In the tables below, the ZeroOcc column contains the number of atoms modelled with zero occupancy, the AltConf column contains the number of residues with at least one atom in alternate conformation and the Trace column contains the number of residues modelled with at most 2 atoms.

- Molecule 1 is a protein called Glutamyl-tRNA(Gln) amidotransferase subunit A.

Mol	Chain	Residues	Atoms					ZeroOcc	AltConf	Trace
1	A	485	Total	C	N	O	S	0	0	0
			3716	2359	605	739	13			

- Molecule 2 is a protein called Aspartyl/glutamyl-tRNA(Asn/Gln) amidotransferase subunit B.

Mol	Chain	Residues	Atoms					ZeroOcc	AltConf	Trace
2	B	405	Total	C	N	O	S	0	0	0
			3228	2034	542	639	13			

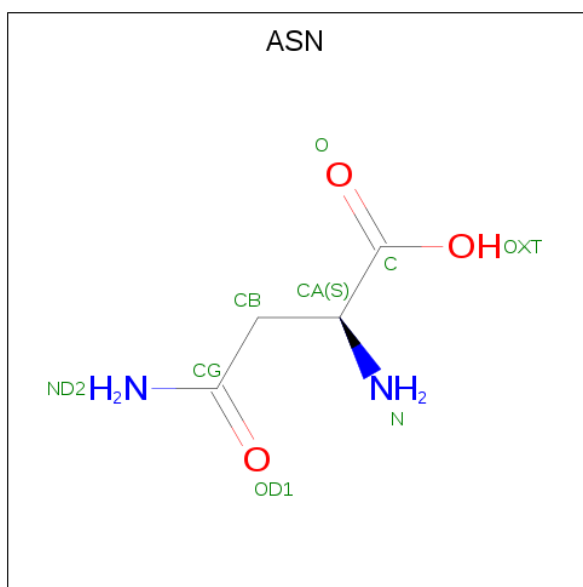
There are 8 discrepancies between the modelled and reference sequences:

Chain	Residue	Modelled	Actual	Comment	Reference
B	476	LEU	-	expression tag	UNP P64201
B	477	GLU	-	expression tag	UNP P64201
B	478	HIS	-	expression tag	UNP P64201
B	479	HIS	-	expression tag	UNP P64201
B	480	HIS	-	expression tag	UNP P64201
B	481	HIS	-	expression tag	UNP P64201
B	482	HIS	-	expression tag	UNP P64201
B	483	HIS	-	expression tag	UNP P64201

- Molecule 3 is a protein called Aspartyl/glutamyl-tRNA(Asn/Gln) amidotransferase subunit C.

Mol	Chain	Residues	Atoms					ZeroOcc	AltConf	Trace
3	C	98	Total	C	N	O	S	0	0	0
			774	476	129	167	2			

- Molecule 4 is ASPARAGINE (three-letter code: ASN) (formula: C<sub>4</sub>H<sub>8</sub>N<sub>2</sub>O<sub>3</sub>).



Mol	Chain	Residues	Atoms				ZeroOcc	AltConf
4	A	1	Total	C	N	O	0	0
			9	4	2	3		

- Molecule 5 is MAGNESIUM ION (three-letter code: MG) (formula: Mg).

Mol	Chain	Residues	Atoms		ZeroOcc	AltConf
5	B	1	Total	Mg	0	0
			1	1		

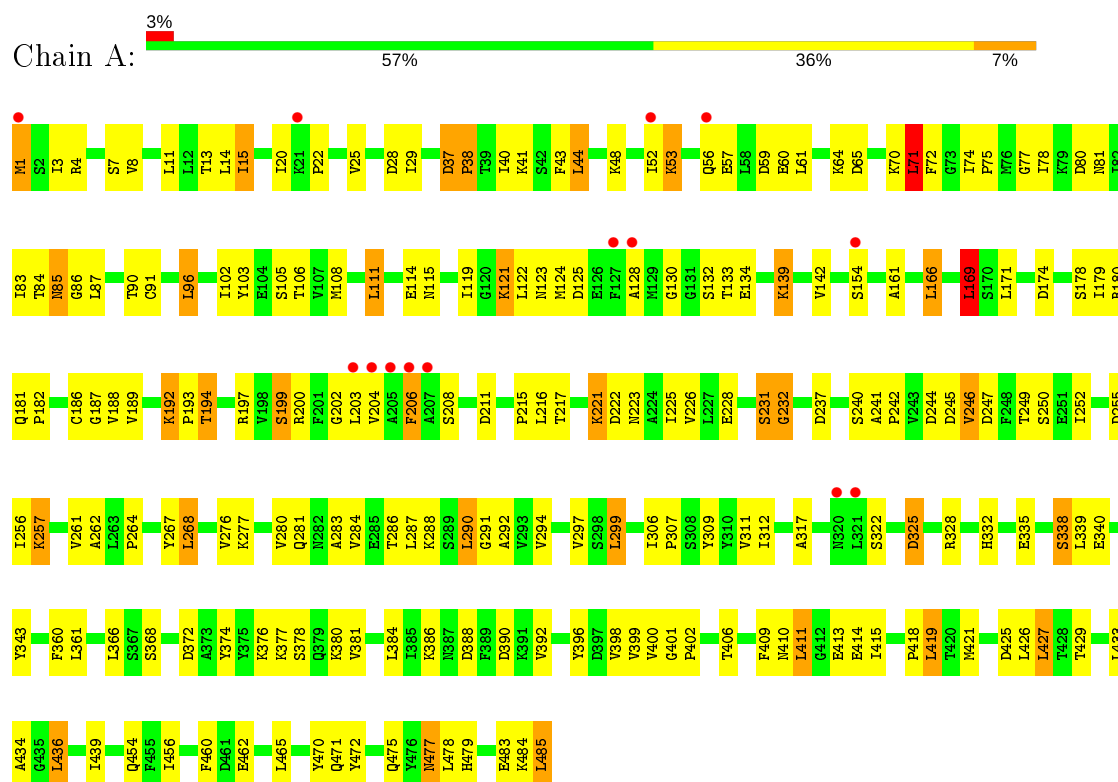
- Molecule 6 is water.

Mol	Chain	Residues	Atoms		ZeroOcc	AltConf
6	A	121	Total	O	0	0
			121	121		
6	B	61	Total	O	0	0
			61	61		
6	C	15	Total	O	0	0
			15	15		

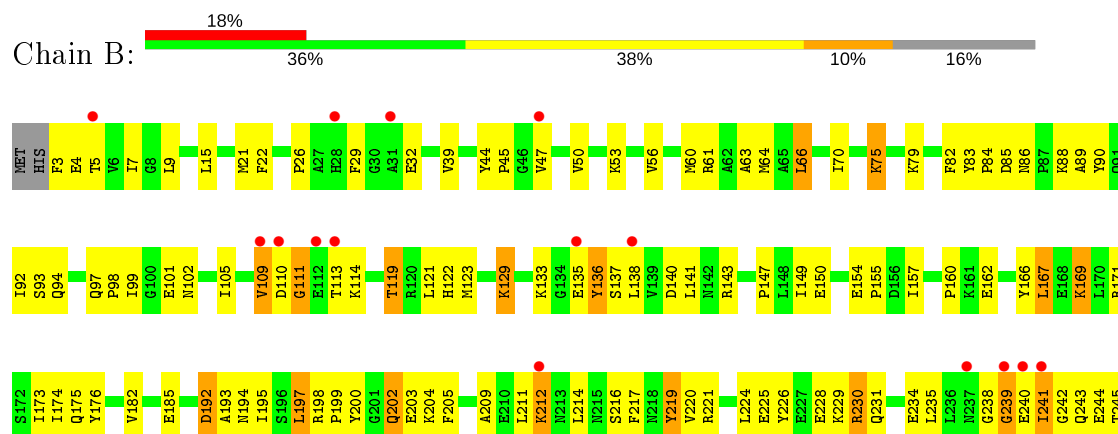
### 3 Residue-property plots

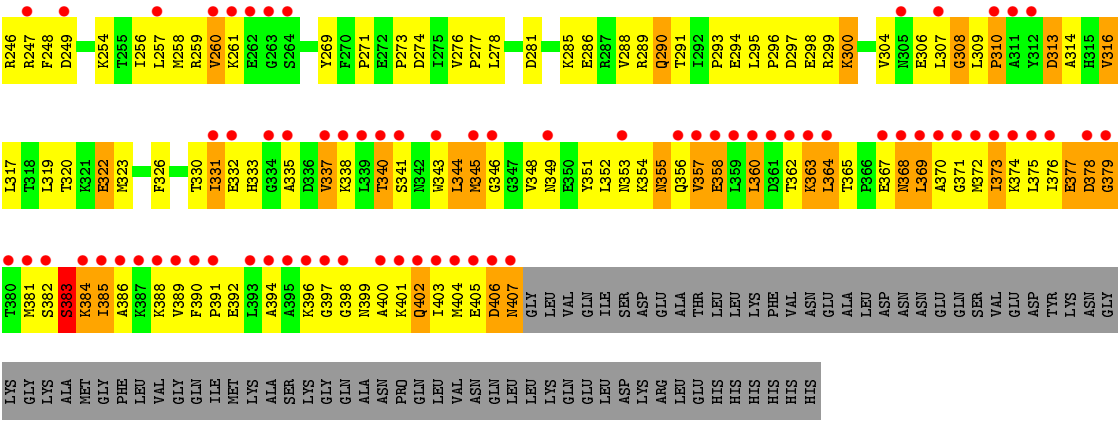
These plots are drawn for all protein, RNA and DNA chains in the entry. The first graphic for a chain summarises the proportions of the various outlier classes displayed in the second graphic. The second graphic shows the sequence view annotated by issues in geometry and electron density. Residues are color-coded according to the number of geometric quality criteria for which they contain at least one outlier: green = 0, yellow = 1, orange = 2 and red = 3 or more. A red dot above a residue indicates a poor fit to the electron density ( $RSRZ > 2$ ). Stretches of 2 or more consecutive residues without any outlier are shown as a green connector. Residues present in the sample, but not in the model, are shown in grey.

- Molecule 1: Glutamyl-tRNA(Gln) amidotransferase subunit A

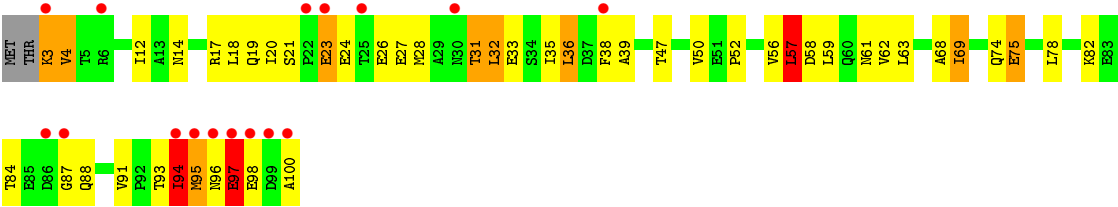


- Molecule 2: Aspartyl/glutamyl-tRNA(Asn/Gln) amidotransferase subunit B





● Molecule 3: Aspartyl/glutamyl-tRNA(Asn/Gln) amidotransferase subunit C



## 4 Data and refinement statistics

Property	Value	Source
Space group	P 21 21 21	Depositor
Cell constants a, b, c, $\alpha$ , $\beta$ , $\gamma$	71.81Å 92.36Å 182.25Å 90.00° 90.00° 90.00°	Depositor
Resolution (Å)	20.00 – 2.55 41.19 – 2.55	Depositor EDS
% Data completeness (in resolution range)	98.8 (20.00-2.55) 98.8 (41.19-2.55)	Depositor EDS
$R_{merge}$	0.07	Depositor
$R_{sym}$	0.07	Depositor
$\langle I/\sigma(I) \rangle$ <sup>1</sup>	3.69 (at 2.54Å)	Xtriage
Refinement program	CNS 1.1	Depositor
R, $R_{free}$	0.234 , 0.271 0.233 , 0.270	Depositor DCC
$R_{free}$ test set	3915 reflections (9.83%)	wwPDB-VP
Wilson B-factor (Å <sup>2</sup> )	45.5	Xtriage
Anisotropy	0.566	Xtriage
Bulk solvent $k_{sol}$ (e/Å <sup>3</sup> ), $B_{sol}$ (Å <sup>2</sup> )	0.31 , 43.6	EDS
L-test for twinning <sup>2</sup>	$\langle  L  \rangle = 0.49$ , $\langle L^2 \rangle = 0.32$	Xtriage
Estimated twinning fraction	No twinning to report.	Xtriage
$F_o, F_c$ correlation	0.92	EDS
Total number of atoms	7925	wwPDB-VP
Average B, all atoms (Å <sup>2</sup> )	54.0	wwPDB-VP

Xtriage's analysis on translational NCS is as follows: *The largest off-origin peak in the Patterson function is 3.96% of the height of the origin peak. No significant pseudotranslation is detected.*

<sup>1</sup>Intensities estimated from amplitudes.

<sup>2</sup>Theoretical values of  $\langle |L| \rangle$ ,  $\langle L^2 \rangle$  for acentric reflections are 0.5, 0.333 respectively for untwinned datasets, and 0.375, 0.2 for perfectly twinned datasets.

## 5 Model quality [i](#)

### 5.1 Standard geometry [i](#)

Bond lengths and bond angles in the following residue types are not validated in this section: MG

The Z score for a bond length (or angle) is the number of standard deviations the observed value is removed from the expected value. A bond length (or angle) with  $|Z| > 5$  is considered an outlier worth inspection. RMSZ is the root-mean-square of all Z scores of the bond lengths (or angles).

Mol	Chain	Bond lengths		Bond angles	
		RMSZ	$\# Z  > 5$	RMSZ	$\# Z  > 5$
1	A	0.48	0/3784	0.75	3/5116 (0.1%)
2	B	0.45	0/3290	0.79	4/4442 (0.1%)
3	C	0.41	0/782	0.82	3/1056 (0.3%)
All	All	0.46	0/7856	0.78	10/10614 (0.1%)

Chiral center outliers are detected by calculating the chiral volume of a chiral center and verifying if the center is modelled as a planar moiety or with the opposite hand. A planarity outlier is detected by checking planarity of atoms in a peptide group, atoms in a mainchain group or atoms of a sidechain that are expected to be planar.

Mol	Chain	#Chirality outliers	#Planarity outliers
1	A	0	1

There are no bond length outliers.

The worst 5 of 10 bond angle outliers are listed below:

Mol	Chain	Res	Type	Atoms	Z	Observed(°)	Ideal(°)
2	B	111	GLY	N-CA-C	-11.22	85.04	113.10
3	C	97	GLU	N-CA-C	9.27	136.02	111.00
2	B	383	SER	N-CA-C	7.53	131.33	111.00
3	C	57	LEU	CA-CB-CG	-6.62	100.08	115.30
1	A	231	SER	N-CA-C	6.27	127.92	111.00

There are no chirality outliers.

All (1) planarity outliers are listed below:

Mol	Chain	Res	Type	Group
1	A	472	TYR	Sidechain



## 5.2 Too-close contacts ⓘ

In the following table, the Non-H and H(model) columns list the number of non-hydrogen atoms and hydrogen atoms in the chain respectively. The H(added) column lists the number of hydrogen atoms added and optimized by MolProbity. The Clashes column lists the number of clashes within the asymmetric unit, whereas Symm-Clashes lists symmetry related clashes.

Mol	Chain	Non-H	H(model)	H(added)	Clashes	Symm-Clashes
1	A	3716	0	3709	183	0
2	B	3228	0	3176	293	0
3	C	774	0	753	69	0
4	A	9	0	5	3	0
5	B	1	0	0	0	0
6	A	121	0	0	5	0
6	B	61	0	0	6	0
6	C	15	0	0	1	0
All	All	7925	0	7643	505	0

The all-atom clashscore is defined as the number of clashes found per 1000 atoms (including hydrogen atoms). The all-atom clashscore for this structure is 33.

The worst 5 of 505 close contacts within the same asymmetric unit are listed below, sorted by their clash magnitude.

Atom-1	Atom-2	Interatomic distance (Å)	Clash overlap (Å)
2:B:199:PRO:HG2	2:B:202:GLN:HE22	1.12	1.12
2:B:357:VAL:HG11	2:B:363:LYS:HE2	1.32	1.09
2:B:192:ASP:OD2	2:B:212:LYS:HD3	1.63	0.98
3:C:23:GLU:OE1	3:C:24:GLU:HG3	1.63	0.96
1:A:194:THR:HG22	1:A:462:GLU:OE2	1.68	0.92

There are no symmetry-related clashes.

## 5.3 Torsion angles ⓘ

### 5.3.1 Protein backbone ⓘ

In the following table, the Percentiles column shows the percent Ramachandran outliers of the chain as a percentile score with respect to all X-ray entries followed by that with respect to entries of similar resolution.

The Analysed column shows the number of residues for which the backbone conformation was analysed, and the total number of residues.

Mol	Chain	Analysed	Favoured	Allowed	Outliers	Percentiles	
1	A	483/485 (100%)	462 (96%)	20 (4%)	1 (0%)	47	60
2	B	403/483 (83%)	364 (90%)	28 (7%)	11 (3%)	5	4
3	C	96/100 (96%)	89 (93%)	5 (5%)	2 (2%)	7	7
All	All	982/1068 (92%)	915 (93%)	53 (5%)	14 (1%)	11	15

5 of 14 Ramachandran outliers are listed below:

Mol	Chain	Res	Type
1	A	232	GLY
2	B	239	GLY
2	B	308	GLY
2	B	381	MET
2	B	383	SER

### 5.3.2 Protein sidechains ⓘ

In the following table, the Percentiles column shows the percent sidechain outliers of the chain as a percentile score with respect to all X-ray entries followed by that with respect to entries of similar resolution.

The Analysed column shows the number of residues for which the sidechain conformation was analysed, and the total number of residues.

Mol	Chain	Analysed	Rotameric	Outliers	Percentiles	
1	A	406/406 (100%)	356 (88%)	50 (12%)	4	4
2	B	352/419 (84%)	305 (87%)	47 (13%)	4	3
3	C	86/88 (98%)	69 (80%)	17 (20%)	1	1
All	All	844/913 (92%)	730 (86%)	114 (14%)	3	3

5 of 114 residues with a non-rotameric sidechain are listed below:

Mol	Chain	Res	Type
2	B	50	VAL
2	B	202	GLN
3	C	33	GLU
2	B	75	LYS
2	B	136	TYR

Some sidechains can be flipped to improve hydrogen bonding and reduce clashes. 5 of 16 such sidechains are listed below:

Mol	Chain	Res	Type
2	B	290	GLN
2	B	315	HIS
2	B	402	GLN
2	B	202	GLN
3	C	60	GLN

### 5.3.3 RNA [i](#)

There are no RNA molecules in this entry.

### 5.4 Non-standard residues in protein, DNA, RNA chains [i](#)

There are no non-standard protein/DNA/RNA residues in this entry.

### 5.5 Carbohydrates [i](#)

There are no carbohydrates in this entry.

### 5.6 Ligand geometry [i](#)

Of 2 ligands modelled in this entry, 1 is monoatomic - leaving 1 for Mogul analysis.

There are no bond length outliers.

There are no bond angle outliers.

There are no chirality outliers.

There are no torsion outliers.

There are no ring outliers.

No monomer is involved in short contacts.

### 5.7 Other polymers [i](#)

There are no such residues in this entry.

### 5.8 Polymer linkage issues [i](#)

There are no chain breaks in this entry.

## 6 Fit of model and data [i](#)

### 6.1 Protein, DNA and RNA chains [i](#)

In the following table, the column labelled ‘#RSRZ> 2’ contains the number (and percentage) of RSRZ outliers, followed by percent RSRZ outliers for the chain as percentile scores relative to all X-ray entries and entries of similar resolution. The OWAB column contains the minimum, median, 95<sup>th</sup> percentile and maximum values of the occupancy-weighted average B-factor per residue. The column labelled ‘Q< 0.9’ lists the number of (and percentage) of residues with an average occupancy less than 0.9.

Mol	Chain	Analysed	<RSRZ>	#RSRZ>2			OWAB(Å²)	Q<0.9
1	A	485/485 (100%)	0.27	14 (2%)	51	59	24, 38, 58, 80	0
2	B	405/483 (83%)	1.10	88 (21%)	0	0	30, 67, 95, 95	0
3	C	98/100 (98%)	0.94	16 (16%)	1	1	42, 62, 95, 95	0
All	All	988/1068 (92%)	0.67	118 (11%)	4	5	24, 49, 95, 95	0

The worst 5 of 118 RSRZ outliers are listed below:

Mol	Chain	Res	Type	RSRZ
2	B	382	SER	10.5
2	B	381	MET	9.6
2	B	403	ILE	9.6
1	A	1	MET	9.1
2	B	400	ALA	8.9

### 6.2 Non-standard residues in protein, DNA, RNA chains [i](#)

There are no non-standard protein/DNA/RNA residues in this entry.

### 6.3 Carbohydrates [i](#)

There are no carbohydrates in this entry.

### 6.4 Ligands [i](#)

In the following table, the Atoms column lists the number of modelled atoms in the group and the number defined in the chemical component dictionary. The B-factors column lists the minimum, median, 95<sup>th</sup> percentile and maximum values of B factors of atoms in the group. The column labelled ‘Q< 0.9’ lists the number of atoms with occupancy less than 0.9.

Mol	Type	Chain	Res	Atoms	RSCC	RSR	B-factors( $\text{\AA}^2$ )	Q<0.9
5	MG	B	501	1/1	0.86	0.23	33,33,33,33	0
4	ASN	A	511	9/9	0.96	0.24	32,36,39,42	0

## 6.5 Other polymers [i](#)

There are no such residues in this entry.