



wwPDB X-ray Structure Validation Summary Report ⓘ

Aug 9, 2020 – 02:59 PM BST

PDB ID : 2DQY
Title : Crystal structure of human carboxylesterase in complex with cholate and palmitate
Authors : Bencharit, S.; Edwards, C.C.; Morton, C.L.; Howard-Williams, E.L.; Potter, P.M.; Redinbo, M.R.
Deposited on : 2006-06-02
Resolution : 3.00 Å(reported)

This is a wwPDB X-ray Structure Validation Summary Report for a publicly released PDB entry.

We welcome your comments at validation@mail.wwpdb.org

A user guide is available at

<https://www.wwpdb.org/validation/2017/XrayValidationReportHelp>

with specific help available everywhere you see the ⓘ symbol.

The following versions of software and data (see [references ⓘ](#)) were used in the production of this report:

MolProbity	:	4.02b-467
Mogul	:	1.8.5 (274361), CSD as541be (2020)
Xtriage (Phenix)	:	NOT EXECUTED
EDS	:	NOT EXECUTED
buster-report	:	1.1.7 (2018)
Percentile statistics	:	20191225.v01 (using entries in the PDB archive December 25th 2019)
Ideal geometry (proteins)	:	Engh & Huber (2001)
Ideal geometry (DNA, RNA)	:	Parkinson et al. (1996)
Validation Pipeline (wwPDB-VP)	:	2.13.1

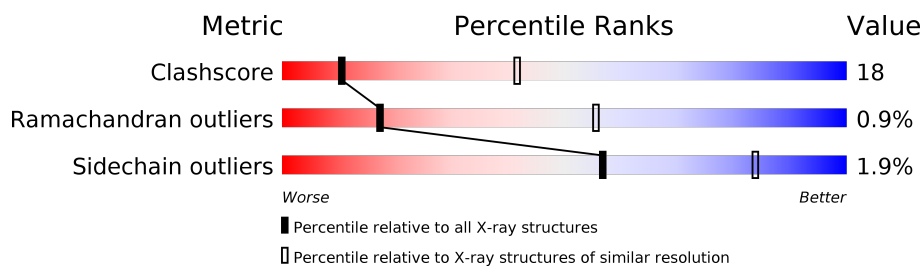
1 Overall quality at a glance

The following experimental techniques were used to determine the structure:

X-RAY DIFFRACTION

The reported resolution of this entry is 3.00 Å.

Percentile scores (ranging between 0-100) for global validation metrics of the entry are shown in the following graphic. The table shows the number of entries on which the scores are based.



Metric	Whole archive (#Entries)	Similar resolution (#Entries, resolution range(Å))
Clashscore	141614	2416 (3.00-3.00)
Ramachandran outliers	138981	2333 (3.00-3.00)
Sidechain outliers	138945	2336 (3.00-3.00)

The table below summarises the geometric issues observed across the polymeric chains and their fit to the electron density. The red, orange, yellow and green segments on the lower bar indicate the fraction of residues that contain outliers for ≥ 3 , 2, 1 and 0 types of geometric quality criteria respectively. A grey segment represents the fraction of residues that are not modelled. The numeric value for each fraction is indicated below the corresponding segment, with a dot representing fractions $\leq 5\%$.

Note EDS was not executed.

Mol	Chain	Length	Quality of chain
1	A	542	
1	B	542	
1	C	542	

The following table lists non-polymeric compounds, carbohydrate monomers and non-standard residues in protein, DNA, RNA chains that are outliers for geometric or electron-density-fit criteria:

Mol	Type	Chain	Res	Chirality	Geometry	Clashes	Electron density
2	NAG	C	379	X	-	-	-
6	PLM	A	11	-	-	X	-

2 Entry composition [i](#)

There are 7 unique types of molecules in this entry. The entry contains 12967 atoms, of which 0 are hydrogens and 0 are deuteriums.

In the tables below, the ZeroOcc column contains the number of atoms modelled with zero occupancy, the AltConf column contains the number of residues with at least one atom in alternate conformation and the Trace column contains the number of residues modelled with at most 2 atoms.

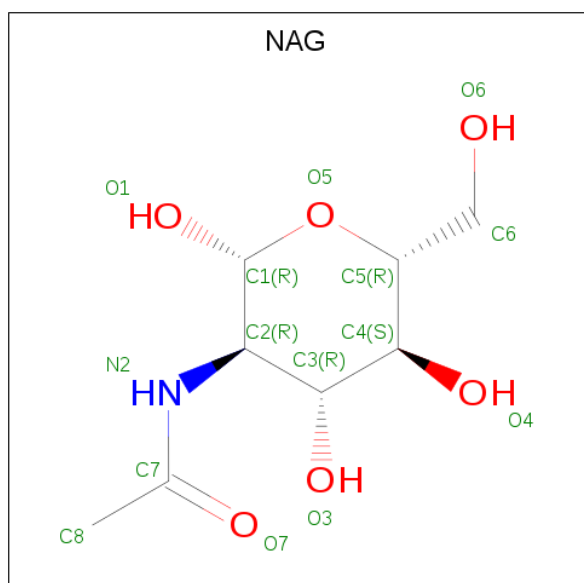
- Molecule 1 is a protein called Liver carboxylesterase 1.

Mol	Chain	Residues	Atoms					ZeroOcc	AltConf	Trace
1	A	532	Total	C	N	O	S	0	0	0
			4130	2662	685	763	20			
1	B	532	Total	C	N	O	S	0	0	0
			4130	2662	685	763	20			
1	C	532	Total	C	N	O	S	0	0	0
			4130	2662	685	763	20			

There are 3 discrepancies between the modelled and reference sequences:

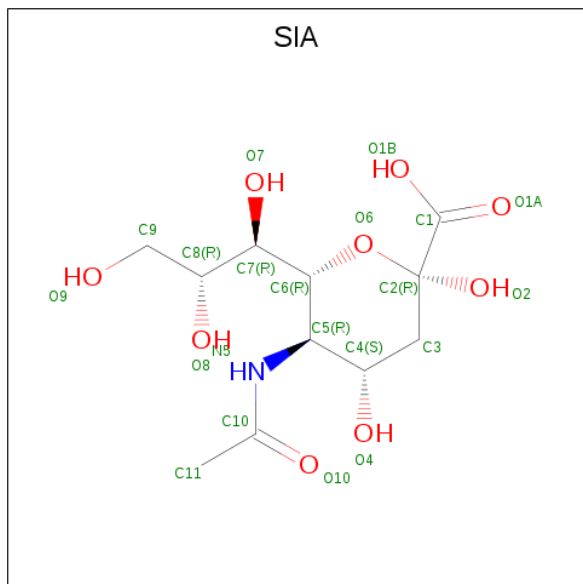
Chain	Residue	Modelled	Actual	Comment	Reference
A	?	-	GLN	deletion	UNP P23141
B	?	-	GLN	deletion	UNP P23141
C	?	-	GLN	deletion	UNP P23141

- Molecule 2 is 2-acetamido-2-deoxy-beta-D-glucopyranose (three-letter code: NAG) (formula: $C_8H_{15}NO_6$).



Mol	Chain	Residues	Atoms				ZeroOcc	AltConf
2	A	1	Total	C	N	O	0	0
			14	8	1	5		
2	B	1	Total	C	N	O	0	0
			14	8	1	5		
2	C	1	Total	C	N	O	0	0
			14	8	1	5		

- Molecule 3 is N-acetyl-alpha-neuraminic acid (three-letter code: SIA) (formula: C₁₁H₁₉NO₉).



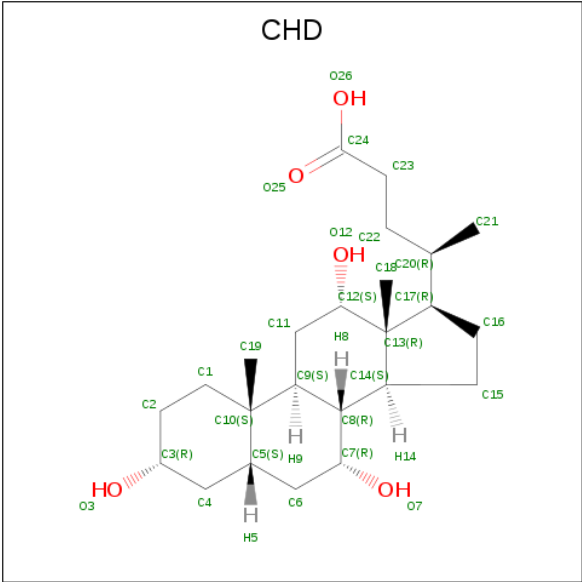
Mol	Chain	Residues	Atoms				ZeroOcc	AltConf
3	A	1	Total	C	N	O	0	0
			21	11	1	9		
3	B	1	Total	C	N	O	0	0
			21	11	1	9		
3	C	1	Total	C	N	O	0	0
			21	11	1	9		

- Molecule 4 is SULFATE ION (three-letter code: SO4) (formula: O₄S).



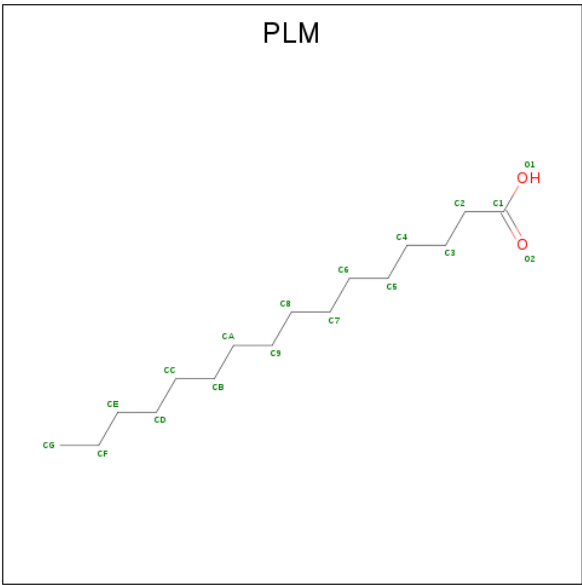
Mol	Chain	Residues	Atoms			ZeroOcc	AltConf
4	A	1	Total	O	S	0	0
			5	4	1		
4	A	1	Total	O	S	0	0
			5	4	1		
4	A	1	Total	O	S	0	0
			5	4	1		
4	B	1	Total	O	S	0	0
			5	4	1		
4	C	1	Total	O	S	0	0
			5	4	1		
4	C	1	Total	O	S	0	0
			5	4	1		

- Molecule 5 is CHOLIC ACID (three-letter code: CHD) (formula: C₂₄H₄₀O₅).



Mol	Chain	Residues	Atoms			ZeroOcc	AltConf
5	A	1	Total	C	O	0	0
			29	24	5		
5	B	1	Total	C	O	0	0
			29	24	5		
5	C	1	Total	C	O	0	0
			29	24	5		

- Molecule 6 is PALMITIC ACID (three-letter code: PLM) (formula: C₁₆H₃₂O₂).



Mol	Chain	Residues	Atoms			ZeroOcc	AltConf
6	A	1	Total	C	O	0	0
			18	16	2		

Continued on next page...

Continued from previous page...

Mol	Chain	Residues	Atoms			ZeroOcc	AltConf
6	B	1	Total	C	O	0	0
			18	16	2		
6	C	1	Total	C	O	0	0
			18	16	2		

- Molecule 7 is water.

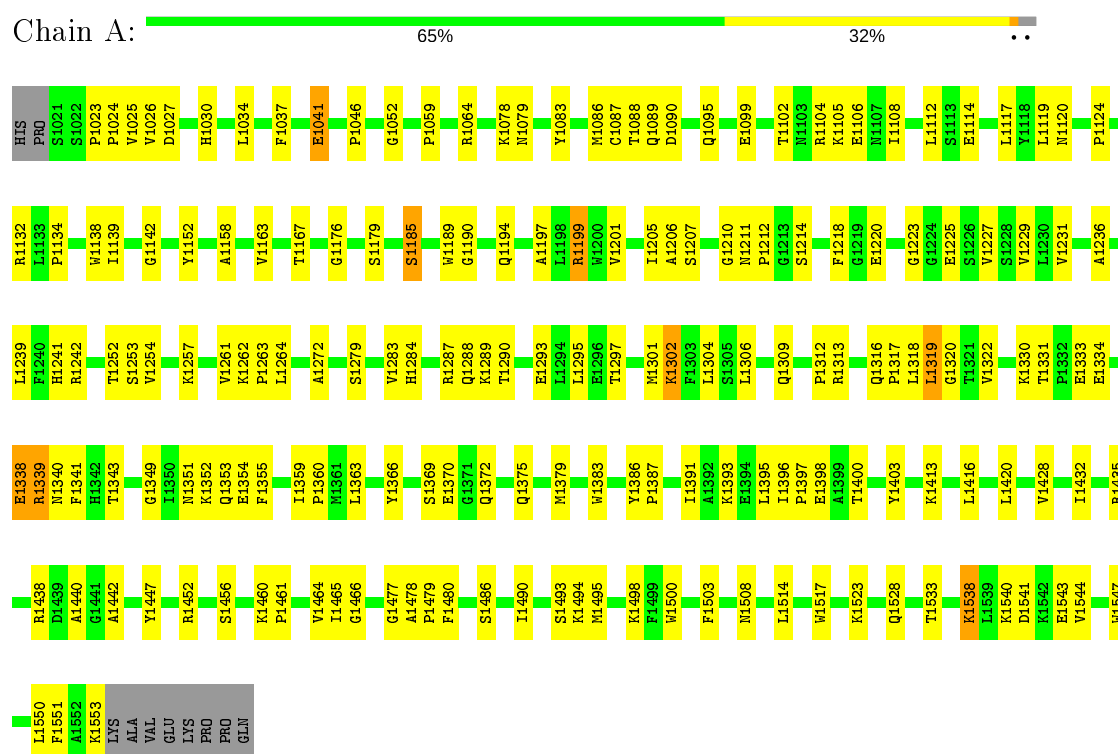
Mol	Chain	Residues	Atoms		ZeroOcc	AltConf
7	A	108	Total	O	0	0
			108	108		
7	B	87	Total	O	0	0
			87	87		
7	C	106	Total	O	0	0
			106	106		

3 Residue-property plots

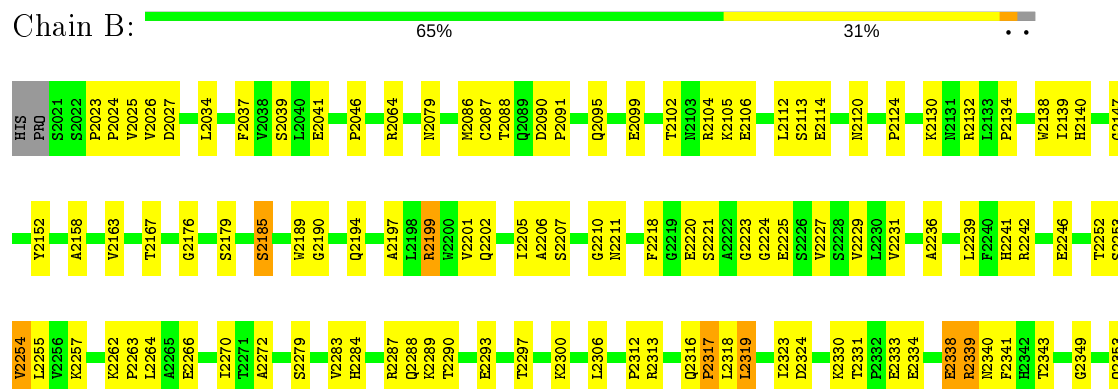
These plots are drawn for all protein, RNA, DNA and oligosaccharide chains in the entry. The first graphic for a chain summarises the proportions of the various outlier classes displayed in the second graphic. The second graphic shows the sequence view annotated by issues in geometry. Residues are color-coded according to the number of geometric quality criteria for which they contain at least one outlier: green = 0, yellow = 1, orange = 2 and red = 3 or more. Stretches of 2 or more consecutive residues without any outlier are shown as a green connector. Residues present in the sample, but not in the model, are shown in grey.

Note EDS was not executed.

- Molecule 1: Liver carboxylesterase 1



- Molecule 1: Liver carboxylesterase 1



4 Data and refinement statistics

Xtriage (Phenix) and EDS were not executed - this section is therefore incomplete.

Property	Value	Source
Space group	P 21 21 21	Depositor
Cell constants a, b, c, α , β , γ	55.29 Å 179.88 Å 201.32 Å 90.00° 90.00° 90.00°	Depositor
Resolution (Å)	19.93 – 3.00	Depositor
% Data completeness (in resolution range)	93.0 (19.93-3.00)	Depositor
R_{merge}	(Not available)	Depositor
R_{sym}	0.11	Depositor
Refinement program	CNS 1.1	Depositor
R, R_{free}	0.226 , 0.271	Depositor
Estimated twinning fraction	No twinning to report.	Xtriage
Total number of atoms	12967	wwPDB-VP
Average B, all atoms (Å ²)	31.0	wwPDB-VP

5 Model quality [i](#)

5.1 Standard geometry [i](#)

Bond lengths and bond angles in the following residue types are not validated in this section: PLM, SIA, CHD, NAG, SO4

The Z score for a bond length (or angle) is the number of standard deviations the observed value is removed from the expected value. A bond length (or angle) with $|Z| > 5$ is considered an outlier worth inspection. RMSZ is the root-mean-square of all Z scores of the bond lengths (or angles).

Mol	Chain	Bond lengths		Bond angles	
		RMSZ	# Z >5	RMSZ	# Z >5
1	A	0.43	0/4236	0.60	1/5754 (0.0%)
1	B	0.42	0/4236	0.58	0/5754
1	C	0.42	0/4236	0.58	0/5754
All	All	0.42	0/12708	0.59	1/17262 (0.0%)

There are no bond length outliers.

All (1) bond angle outliers are listed below:

Mol	Chain	Res	Type	Atoms	Z	Observed(°)	Ideal(°)
1	A	1319	LEU	N-CA-C	-7.63	90.40	111.00

There are no chirality outliers.

There are no planarity outliers.

5.2 Too-close contacts [i](#)

In the following table, the Non-H and H(model) columns list the number of non-hydrogen atoms and hydrogen atoms in the chain respectively. The H(added) column lists the number of hydrogen atoms added and optimized by MolProbity. The Clashes column lists the number of clashes within the asymmetric unit, whereas Symm-Clashes lists symmetry related clashes.

Mol	Chain	Non-H	H(model)	H(added)	Clashes	Symm-Clashes
1	A	4130	0	4131	165	0
1	B	4130	0	4131	143	0
1	C	4130	0	4131	153	0
2	A	14	0	13	0	0
2	B	14	0	13	0	0
2	C	14	0	13	2	0
3	A	21	0	18	3	0

Continued on next page...

Continued from previous page...

Mol	Chain	Non-H	H(model)	H(added)	Clashes	Symm-Clashes
3	B	21	0	18	2	0
3	C	21	0	18	8	0
4	A	15	0	0	0	0
4	B	5	0	0	0	0
4	C	10	0	0	0	0
5	A	29	0	39	2	0
5	B	29	0	39	0	0
5	C	29	0	39	7	0
6	A	18	0	31	9	0
6	B	18	0	31	2	0
6	C	18	0	31	7	0
7	A	108	0	0	14	0
7	B	87	0	0	11	0
7	C	106	0	0	22	0
All	All	12967	0	12696	468	0

The all-atom clashscore is defined as the number of clashes found per 1000 atoms (including hydrogen atoms). The all-atom clashscore for this structure is 18.

The worst 5 of 468 close contacts within the same asymmetric unit are listed below, sorted by their clash magnitude.

Atom-1	Atom-2	Interatomic distance (Å)	Clash overlap (Å)
1:B:2317:PRO:HG3	1:B:2387:PRO:HB2	1.29	1.06
1:A:1199:ARG:HH11	1:A:1199:ARG:HB3	1.28	0.97
1:C:3199:ARG:HB3	1:C:3199:ARG:HH11	1.31	0.95
1:B:2199:ARG:HB3	1:B:2199:ARG:HH11	1.26	0.95
1:B:2105:LYS:HE2	1:B:2106:GLU:HG2	1.51	0.93

There are no symmetry-related clashes.

5.3 Torsion angles [i](#)

5.3.1 Protein backbone [i](#)

In the following table, the Percentiles column shows the percent Ramachandran outliers of the chain as a percentile score with respect to all X-ray entries followed by that with respect to entries of similar resolution.

The Analysed column shows the number of residues for which the backbone conformation was analysed, and the total number of residues.

Mol	Chain	Analysed	Favoured	Allowed	Outliers	Percentiles	
1	A	530/542 (98%)	481 (91%)	45 (8%)	4 (1%)	19	57
1	B	530/542 (98%)	478 (90%)	44 (8%)	8 (2%)	10	42
1	C	530/542 (98%)	484 (91%)	43 (8%)	3 (1%)	25	64
All	All	1590/1626 (98%)	1443 (91%)	132 (8%)	15 (1%)	17	55

5 of 15 Ramachandran outliers are listed below:

Mol	Chain	Res	Type
1	A	1185	SER
1	B	2185	SER
1	B	2319	LEU
1	B	2369	SER
1	C	3185	SER

5.3.2 Protein sidechains ⓘ

In the following table, the Percentiles column shows the percent sidechain outliers of the chain as a percentile score with respect to all X-ray entries followed by that with respect to entries of similar resolution.

The Analysed column shows the number of residues for which the sidechain conformation was analysed, and the total number of residues.

Mol	Chain	Analysed	Rotameric	Outliers	Percentiles	
1	A	448/457 (98%)	440 (98%)	8 (2%)	59	85
1	B	448/457 (98%)	439 (98%)	9 (2%)	55	83
1	C	448/457 (98%)	439 (98%)	9 (2%)	55	83
All	All	1344/1371 (98%)	1318 (98%)	26 (2%)	57	84

5 of 26 residues with a non-rotameric sidechain are listed below:

Mol	Chain	Res	Type
1	B	2264	LEU
1	B	2366	TYR
1	C	3500	TRP
1	B	2338	GLU
1	B	2339	ARG

Some sidechains can be flipped to improve hydrogen bonding and reduce clashes. 5 of 25 such sidechains are listed below:

Mol	Chain	Res	Type
1	B	2131	ASN
1	B	2316	GLN
1	C	3372	GLN
1	B	2238	ASN
1	B	2372	GLN

5.3.3 RNA [i](#)

There are no RNA molecules in this entry.

5.4 Non-standard residues in protein, DNA, RNA chains [i](#)

There are no non-standard protein/DNA/RNA residues in this entry.

5.5 Carbohydrates [i](#)

There are no monosaccharides in this entry.

5.6 Ligand geometry [i](#)

18 ligands are modelled in this entry.

In the following table, the Counts columns list the number of bonds (or angles) for which Mogul statistics could be retrieved, the number of bonds (or angles) that are observed in the model and the number of bonds (or angles) that are defined in the Chemical Component Dictionary. The Link column lists molecule types, if any, to which the group is linked. The Z score for a bond length (or angle) is the number of standard deviations the observed value is removed from the expected value. A bond length (or angle) with $|Z| > 2$ is considered an outlier worth inspection. RMSZ is the root-mean-square of all Z scores of the bond lengths (or angles).

Mol	Type	Chain	Res	Link	Bond lengths			Bond angles		
					Counts	RMSZ	# Z > 2	Counts	RMSZ	# Z > 2
4	SO4	A	185	-	4,4,4	0.31	0	6,6,6	0.11	0
4	SO4	A	285	-	4,4,4	0.30	0	6,6,6	0.07	0
4	SO4	B	284	-	4,4,4	0.26	0	6,6,6	0.11	0
5	CHD	A	1	-	29,32,32	2.11	14 (48%)	48,51,51	1.36	7 (14%)
6	PLM	C	13	-	14,17,17	0.43	0	13,17,17	0.42	0
2	NAG	C	379	1	14,14,15	0.64	0	17,19,21	1.11	1 (5%)
4	SO4	A	184	-	4,4,4	0.30	0	6,6,6	0.06	0
2	NAG	B	279	1	14,14,15	0.54	0	17,19,21	1.00	1 (5%)
3	SIA	C	382	-	18,21,21	0.99	2 (11%)	21,31,31	1.07	1 (4%)

Mol	Type	Chain	Res	Link	Bond lengths			Bond angles		
					Counts	RMSZ	# Z > 2	Counts	RMSZ	# Z > 2
4	SO4	C	385	-	4,4,4	0.31	0	6,6,6	0.08	0
2	NAG	A	179	1	14,14,15	0.79	0	17,19,21	1.13	2 (11%)
5	CHD	C	3	-	29,32,32	2.14	12 (41%)	48,51,51	1.36	7 (14%)
3	SIA	B	282	-	18,21,21	0.81	0	21,31,31	1.13	2 (9%)
6	PLM	A	11	-	14,17,17	0.38	0	13,17,17	0.44	0
4	SO4	C	384	-	4,4,4	0.28	0	6,6,6	0.13	0
5	CHD	B	2	-	29,32,32	2.25	16 (55%)	48,51,51	1.39	7 (14%)
6	PLM	B	12	-	14,17,17	0.45	0	13,17,17	0.44	0
3	SIA	A	182	-	18,21,21	1.02	2 (11%)	21,31,31	0.87	1 (4%)

In the following table, the Chirals column lists the number of chiral outliers, the number of chiral centers analysed, the number of these observed in the model and the number defined in the Chemical Component Dictionary. Similar counts are reported in the Torsion and Rings columns. '-' means no outliers of that kind were identified.

Mol	Type	Chain	Res	Link	Chirals	Torsions	Rings
2	NAG	A	179	1	-	3/6/23/26	0/1/1/1
5	CHD	A	1	-	-	1/7/74/74	0/4/4/4
6	PLM	C	13	-	-	9/13/15/15	-
2	NAG	B	279	1	-	2/6/23/26	0/1/1/1
2	NAG	C	379	1	1/1/5/7	3/6/23/26	0/1/1/1
3	SIA	C	382	-	-	11/14/38/38	0/1/1/1
5	CHD	C	3	-	-	3/7/74/74	0/4/4/4
3	SIA	B	282	-	-	4/14/38/38	0/1/1/1
6	PLM	A	11	-	-	11/13/15/15	-
5	CHD	B	2	-	-	3/7/74/74	0/4/4/4
6	PLM	B	12	-	-	7/13/15/15	-
3	SIA	A	182	-	-	3/14/38/38	0/1/1/1

The worst 5 of 46 bond length outliers are listed below:

Mol	Chain	Res	Type	Atoms	Z	Observed(Å)	Ideal(Å)
5	C	3	CHD	C20-C17	4.73	1.62	1.54
5	B	2	CHD	C11-C12	3.87	1.59	1.53
5	B	2	CHD	C10-C9	3.70	1.62	1.56
5	C	3	CHD	C11-C12	3.61	1.59	1.53
5	A	1	CHD	C11-C12	3.59	1.59	1.53

The worst 5 of 29 bond angle outliers are listed below:

Mol	Chain	Res	Type	Atoms	Z	Observed(°)	Ideal(°)
5	B	2	CHD	C17-C13-C14	-4.16	95.90	100.09
5	C	3	CHD	C19-C10-C1	-3.79	102.16	108.26
2	B	279	NAG	C2-N2-C7	-3.50	117.92	122.90
5	A	1	CHD	C17-C13-C14	-3.28	96.79	100.09
2	C	379	NAG	C4-C3-C2	3.21	115.72	111.02

All (1) chirality outliers are listed below:

Mol	Chain	Res	Type	Atom
2	C	379	NAG	C1

5 of 60 torsion outliers are listed below:

Mol	Chain	Res	Type	Atoms
2	C	379	NAG	C3-C2-N2-C7
2	C	379	NAG	C8-C7-N2-C2
2	C	379	NAG	O7-C7-N2-C2
3	C	382	SIA	C5-C6-C7-C8
3	C	382	SIA	C5-C6-C7-O7

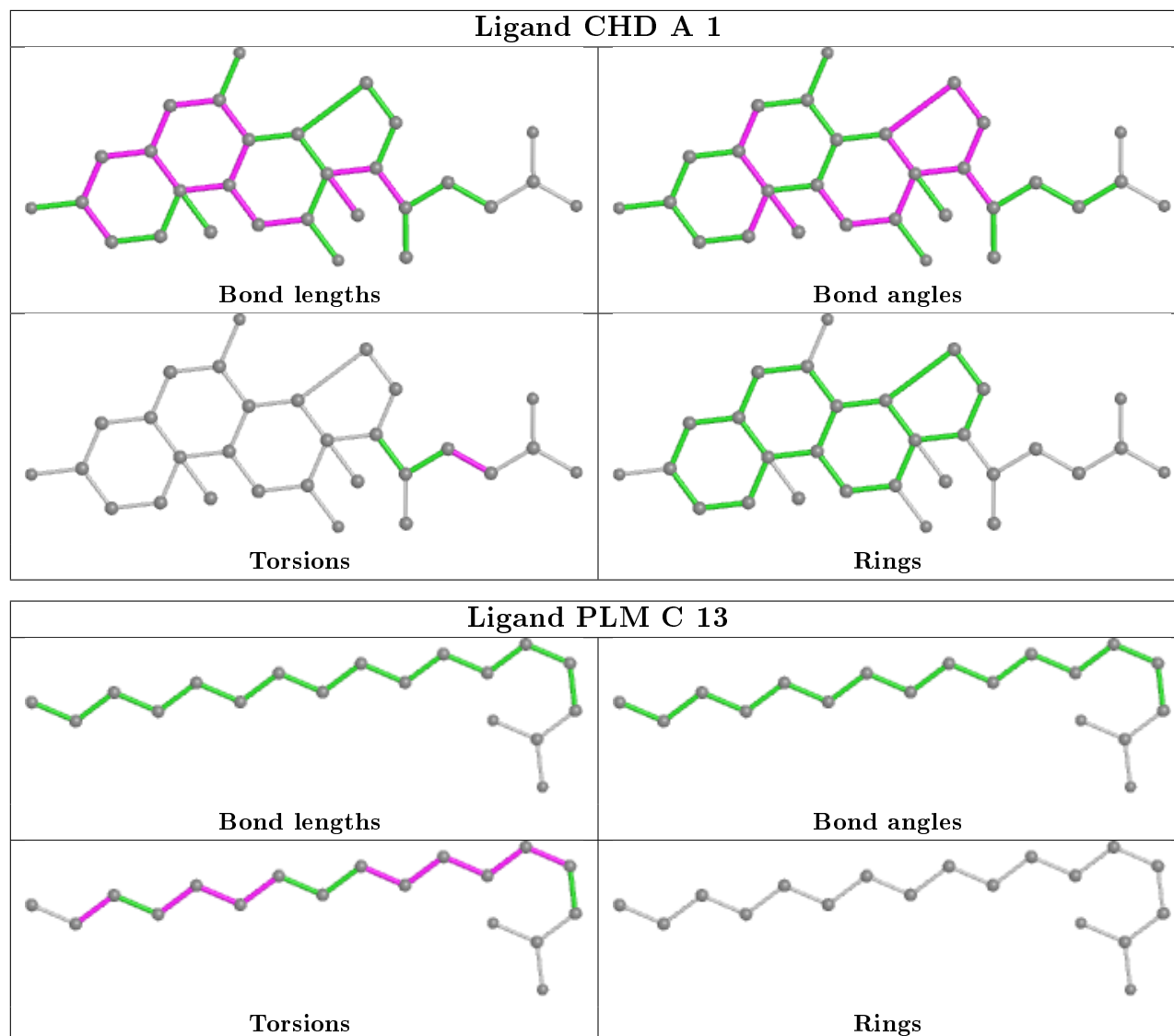
There are no ring outliers.

9 monomers are involved in 42 short contacts:

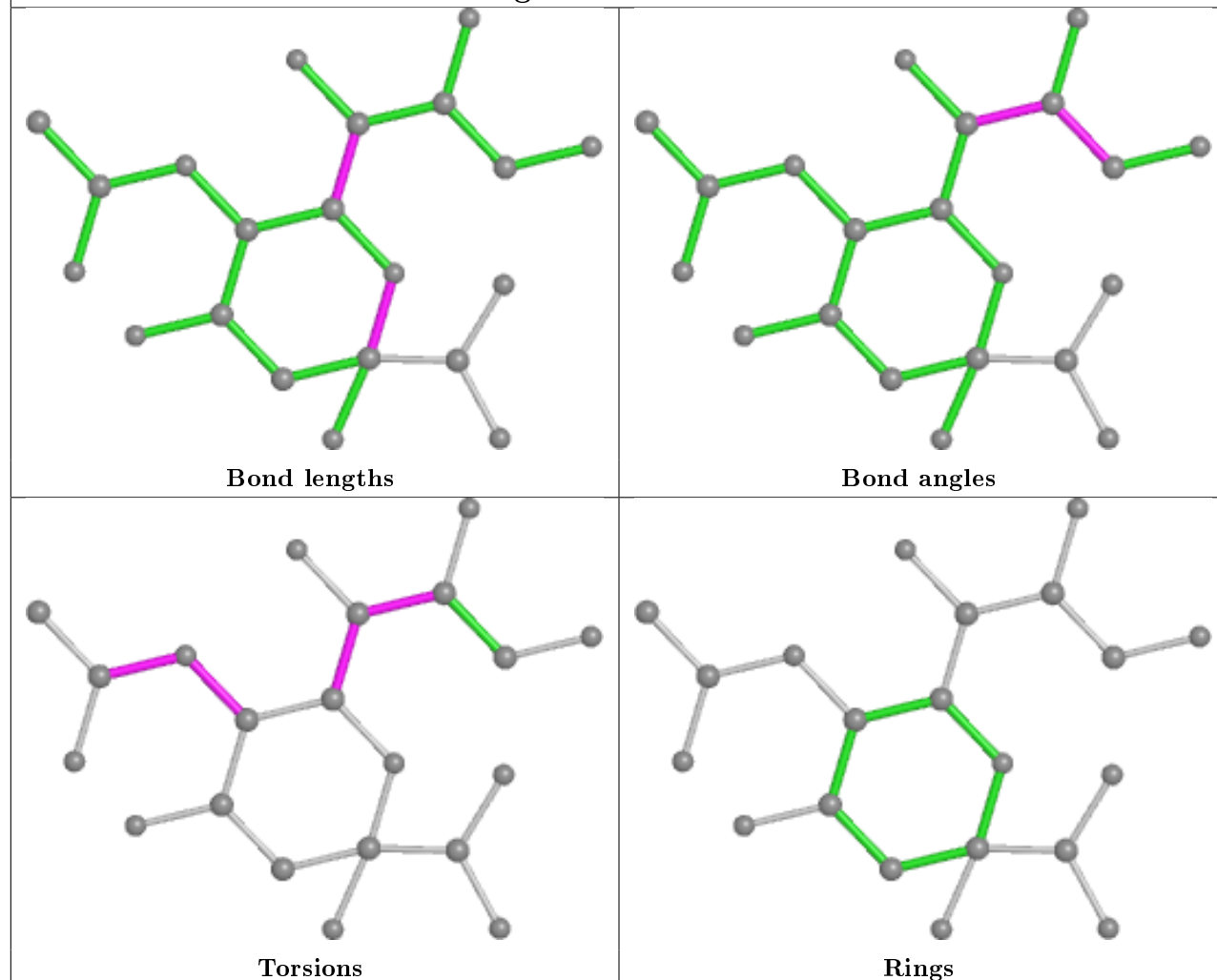
Mol	Chain	Res	Type	Clashes	Symm-Clashes
5	A	1	CHD	2	0
6	C	13	PLM	7	0
2	C	379	NAG	2	0
3	C	382	SIA	8	0
5	C	3	CHD	7	0
3	B	282	SIA	2	0
6	A	11	PLM	9	0
6	B	12	PLM	2	0
3	A	182	SIA	3	0

The following is a two-dimensional graphical depiction of Mogul quality analysis of bond lengths, bond angles, torsion angles, and ring geometry for all instances of the Ligand of Interest. In addition, ligands with molecular weight > 250 and outliers as shown on the validation Tables will also be included. For torsion angles, if less than 5% of the Mogul distribution of torsion angles is within 10 degrees of the torsion angle in question, then that torsion angle is considered an outlier. Any bond that is central to one or more torsion angles identified as an outlier by Mogul will be highlighted in the graph. For rings, the root-mean-square deviation (RMSD) between the ring in question and similar rings identified by Mogul is calculated over all ring torsion angles. If the average RMSD is greater than 60 degrees and the minimal RMSD between the ring in question and

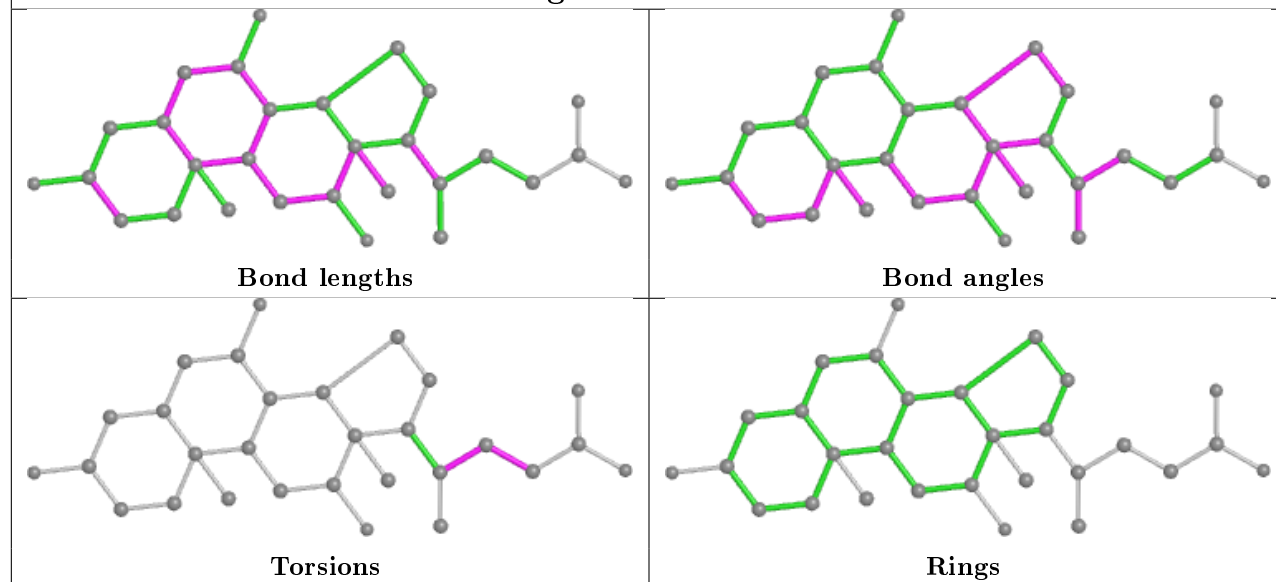
any Mogul-identified rings is also greater than 60 degrees, then that ring is considered an outlier. The outliers are highlighted in purple. The color gray indicates Mogul did not find sufficient equivalents in the CSD to analyse the geometry.



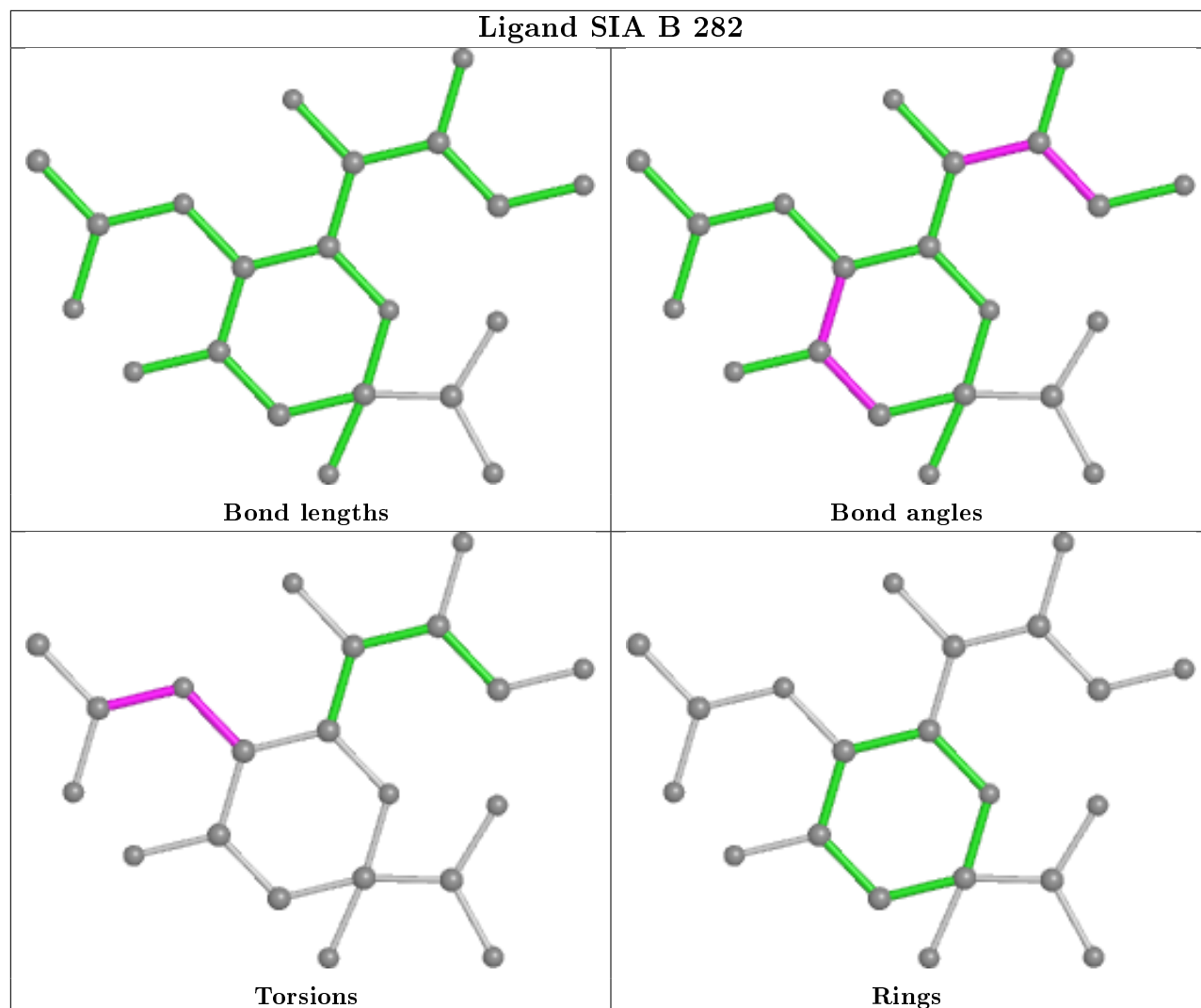
Ligand SIA C 382



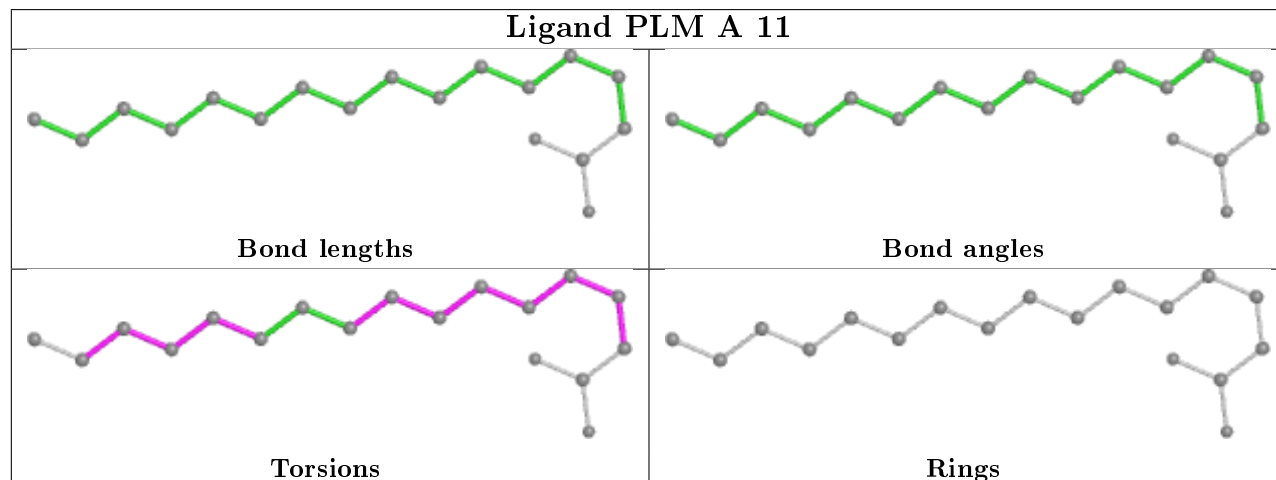
Ligand CHD C 3



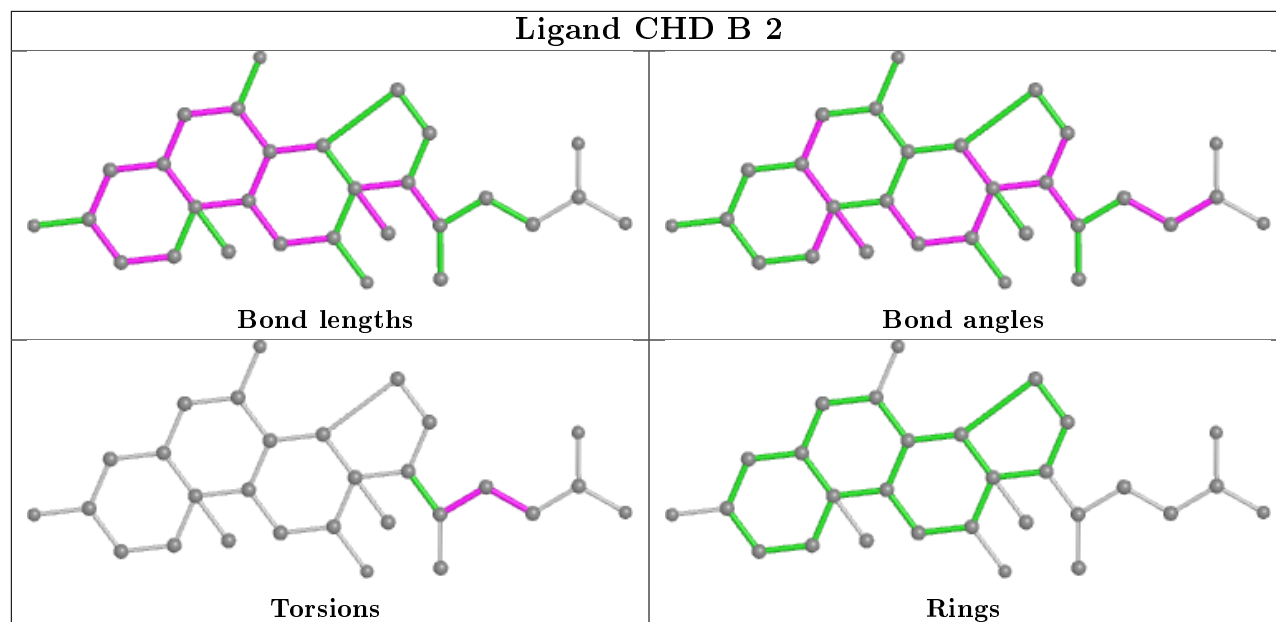
Ligand SIA B 282



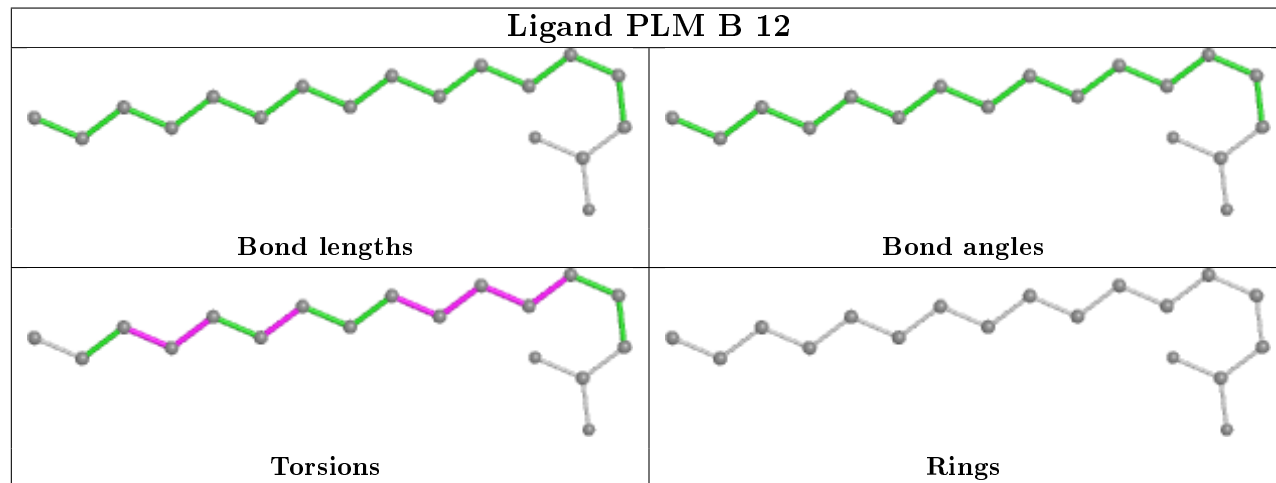
Ligand PLM A 11

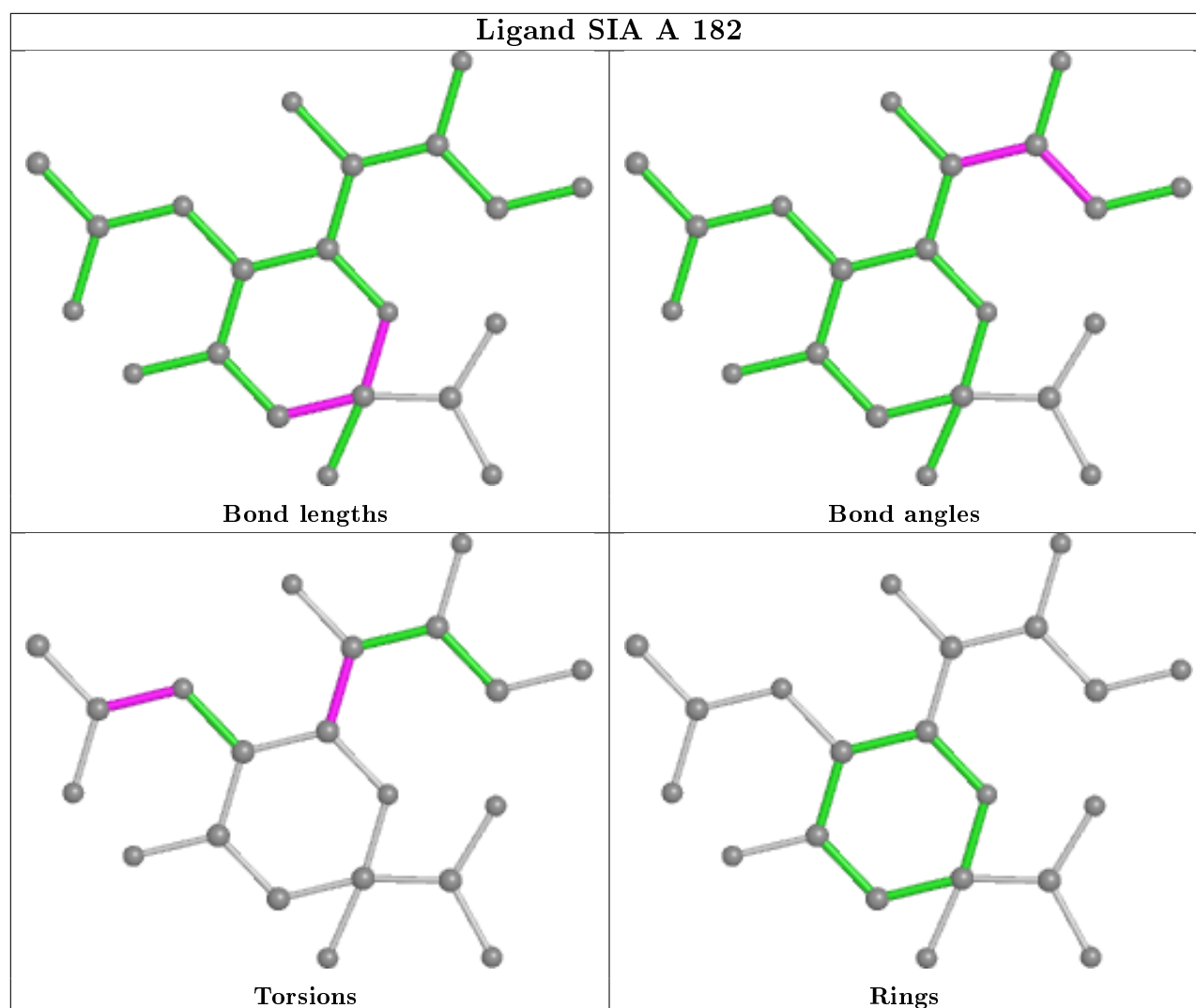


Ligand CHD B 2



Ligand PLM B 12





5.7 Other polymers [i](#)

There are no such residues in this entry.

5.8 Polymer linkage issues [i](#)

There are no chain breaks in this entry.

6 Fit of model and data ⓘ

6.1 Protein, DNA and RNA chains ⓘ

EDS was not executed - this section is therefore empty.

6.2 Non-standard residues in protein, DNA, RNA chains ⓘ

EDS was not executed - this section is therefore empty.

6.3 Carbohydrates ⓘ

EDS was not executed - this section is therefore empty.

6.4 Ligands ⓘ

EDS was not executed - this section is therefore empty.

6.5 Other polymers ⓘ

EDS was not executed - this section is therefore empty.