



# Full wwPDB X-ray Structure Validation Report ⓘ

May 21, 2020 – 04:43 pm BST

PDB ID : 2DR8  
Title : Complex structure of CCA-adding enzyme with tRNA<sup>mini</sup>DC and CTP  
Authors : Tomita, K.; Ishitani, R.; Fukai, S.; Nureki, O.  
Deposited on : 2006-06-08  
Resolution : 2.50 Å(reported)

This is a Full wwPDB X-ray Structure Validation Report for a publicly released PDB entry.

We welcome your comments at [validation@mail.wwpdb.org](mailto:validation@mail.wwpdb.org)

A user guide is available at

<https://www.wwpdb.org/validation/2017/XrayValidationReportHelp>

with specific help available everywhere you see the ⓘ symbol.

---

The following versions of software and data (see [references ⓘ](#)) were used in the production of this report:

MolProbity : 4.02b-467  
Mogul : 1.8.5 (274361), CSD as541be (2020)  
Xtriage (Phenix) : 1.13  
EDS : 2.11  
buster-report : 1.1.7 (2018)  
Percentile statistics : 20191225.v01 (using entries in the PDB archive December 25th 2019)  
Refmac : 5.8.0158  
CCP4 : 7.0.044 (Gargrove)  
Ideal geometry (proteins) : Engh & Huber (2001)  
Ideal geometry (DNA, RNA) : Parkinson et al. (1996)  
Validation Pipeline (wwPDB-VP) : 2.11

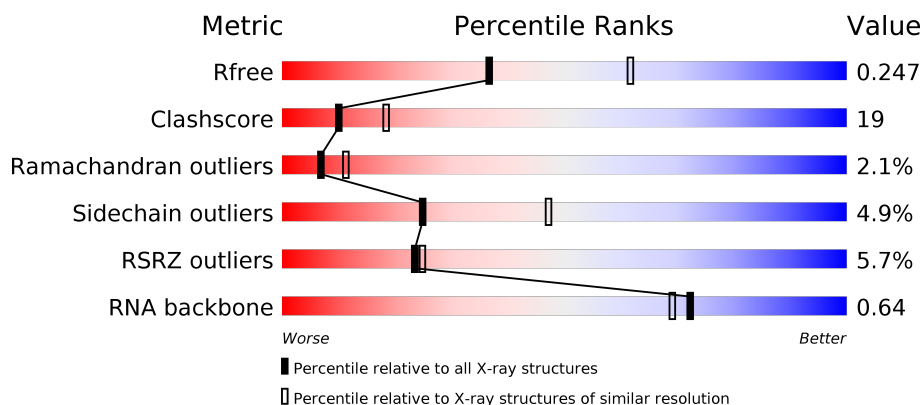
# 1 Overall quality at a glance

The following experimental techniques were used to determine the structure:

*X-RAY DIFFRACTION*

The reported resolution of this entry is 2.50 Å.

Percentile scores (ranging between 0-100) for global validation metrics of the entry are shown in the following graphic. The table shows the number of entries on which the scores are based.



Metric	Whole archive (#Entries)	Similar resolution (#Entries, resolution range(Å))
$R_{free}$	130704	4661 (2.50-2.50)
Clashscore	141614	5346 (2.50-2.50)
Ramachandran outliers	138981	5231 (2.50-2.50)
Sidechain outliers	138945	5233 (2.50-2.50)
RSRZ outliers	127900	4559 (2.50-2.50)
RNA backbone	3102	1008 (2.84-2.16)

The table below summarises the geometric issues observed across the polymeric chains and their fit to the electron density. The red, orange, yellow and green segments on the lower bar indicate the fraction of residues that contain outliers for  $\geq 3$ , 2, 1 and 0 types of geometric quality criteria respectively. A grey segment represents the fraction of residues that are not modelled. The numeric value for each fraction is indicated below the corresponding segment, with a dot representing fractions  $\leq 5\%$ . The upper red bar (where present) indicates the fraction of residues that have poor fit to the electron density. The numeric value is given above the bar.

Mol	Chain	Length	Quality of chain
1	B	33	<div> <div>6%</div> <div> <div></div> <div>39%</div> <div>42%</div> <div>18%</div> </div> </div>
2	A	437	<div> <div>6%</div> <div> <div></div> <div>65%</div> <div>32%</div> <div>.</div> </div> </div>

## 2 Entry composition [i](#)

There are 6 unique types of molecules in this entry. The entry contains 4532 atoms, of which 0 are hydrogens and 0 are deuteriums.

In the tables below, the ZeroOcc column contains the number of atoms modelled with zero occupancy, the AltConf column contains the number of residues with at least one atom in alternate conformation and the Trace column contains the number of residues modelled with at most 2 atoms.

- Molecule 1 is a RNA chain called tRNA (33-MER).

Mol	Chain	Residues	Atoms					ZeroOcc	AltConf	Trace
1	B	33	Total	C	N	O	P	0	0	0
			704	312	124	235	33			

- Molecule 2 is a protein called CCA-adding enzyme.

Mol	Chain	Residues	Atoms					ZeroOcc	AltConf	Trace
2	A	437	Total	C	N	O	S	0	0	0
			3630	2333	632	652	13			

- Molecule 3 is SULFATE ION (three-letter code: SO4) (formula: O<sub>4</sub>S).

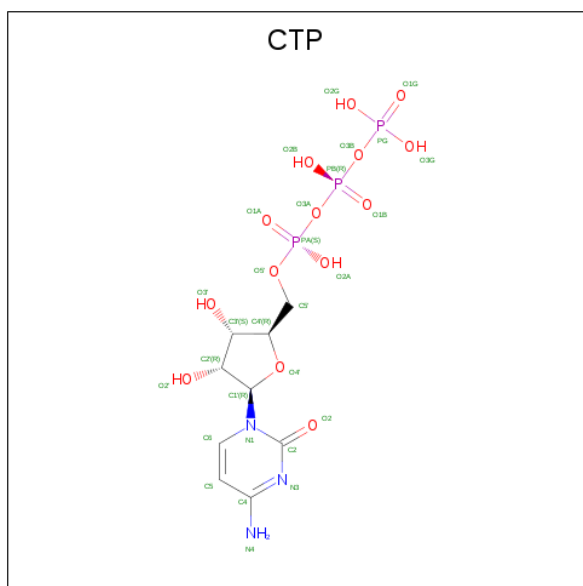


Mol	Chain	Residues	Atoms			ZeroOcc	AltConf
3	A	1	Total	O	S	0	0
			5	4	1		

- Molecule 4 is MAGNESIUM ION (three-letter code: MG) (formula: Mg).

Mol	Chain	Residues	Atoms	ZeroOcc	AltConf
4	A	1	Total Mg 1 1	0	0

- Molecule 5 is CYTIDINE-5'-TRIPHOSPHATE (three-letter code: CTP) (formula:  $C_9H_{16}N_3O_{14}P_3$ ).



Mol	Chain	Residues	Atoms	ZeroOcc	AltConf
5	A	1	Total C N O P 29 9 3 14 3	0	0

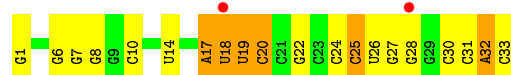
- Molecule 6 is water.

Mol	Chain	Residues	Atoms	ZeroOcc	AltConf
6	B	33	Total O 33 33	0	0
6	A	130	Total O 130 130	0	0

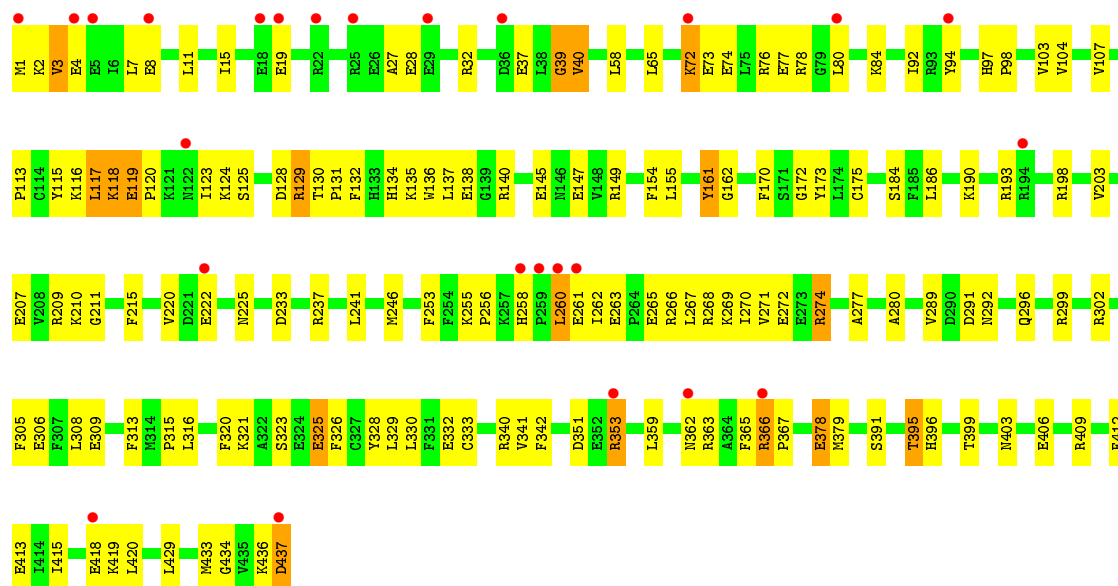
### 3 Residue-property plots [i](#)

These plots are drawn for all protein, RNA and DNA chains in the entry. The first graphic for a chain summarises the proportions of the various outlier classes displayed in the second graphic. The second graphic shows the sequence view annotated by issues in geometry and electron density. Residues are color-coded according to the number of geometric quality criteria for which they contain at least one outlier: green = 0, yellow = 1, orange = 2 and red = 3 or more. A red dot above a residue indicates a poor fit to the electron density ( $RSRZ > 2$ ). Stretches of 2 or more consecutive residues without any outlier are shown as a green connector. Residues present in the sample, but not in the model, are shown in grey.

- Molecule 1: tRNA (33-MER)



- Molecule 2: CCA-adding enzyme



## 4 Data and refinement statistics

Property	Value	Source
Space group	P 43 21 2	Depositor
Cell constants a, b, c, $\alpha$ , $\beta$ , $\gamma$	58.03 Å 58.03 Å 429.51 Å 90.00° 90.00° 90.00°	Depositor
Resolution (Å)	9.98 – 2.50 9.98 – 2.50	Depositor EDS
% Data completeness (in resolution range)	98.0 (9.98-2.50) 98.2 (9.98-2.50)	Depositor EDS
$R_{merge}$	(Not available)	Depositor
$R_{sym}$	(Not available)	Depositor
$\langle I/\sigma(I) \rangle$ <sup>1</sup>	4.73 (at 2.50 Å)	Xtriage
Refinement program	CNS 1.1	Depositor
R, $R_{free}$	0.224 , 0.257 0.216 , 0.247	Depositor DCC
$R_{free}$ test set	1247 reflections (4.82%)	wwPDB-VP
Wilson B-factor (Å <sup>2</sup> )	49.0	Xtriage
Anisotropy	0.052	Xtriage
Bulk solvent $k_{sol}$ (e/Å <sup>3</sup> ), $B_{sol}$ (Å <sup>2</sup> )	0.42 , 57.0	EDS
L-test for twinning <sup>2</sup>	$\langle  L  \rangle = 0.47$ , $\langle L^2 \rangle = 0.30$	Xtriage
Estimated twinning fraction	No twinning to report.	Xtriage
$F_o, F_c$ correlation	0.94	EDS
Total number of atoms	4532	wwPDB-VP
Average B, all atoms (Å <sup>2</sup> )	47.0	wwPDB-VP

Xtriage's analysis on translational NCS is as follows: *The largest off-origin peak in the Patterson function is 4.26% of the height of the origin peak. No significant pseudotranslation is detected.*

<sup>1</sup>Intensities estimated from amplitudes.

<sup>2</sup>Theoretical values of  $\langle |L| \rangle$ ,  $\langle L^2 \rangle$  for acentric reflections are 0.5, 0.333 respectively for untwinned datasets, and 0.375, 0.2 for perfectly twinned datasets.

## 5 Model quality

### 5.1 Standard geometry

Bond lengths and bond angles in the following residue types are not validated in this section: MG, CTP, SO4

The Z score for a bond length (or angle) is the number of standard deviations the observed value is removed from the expected value. A bond length (or angle) with  $|Z| > 5$  is considered an outlier worth inspection. RMSZ is the root-mean-square of all Z scores of the bond lengths (or angles).

Mol	Chain	Bond lengths		Bond angles	
		RMSZ	$\# Z  > 5$	RMSZ	$\# Z  > 5$
1	B	0.47	1/784 (0.1%)	0.74	0/1219
2	A	0.41	0/3713	0.62	1/4987 (0.0%)
All	All	0.42	1/4497 (0.0%)	0.64	1/6206 (0.0%)

Chiral center outliers are detected by calculating the chiral volume of a chiral center and verifying if the center is modelled as a planar moiety or with the opposite hand. A planarity outlier is detected by checking planarity of atoms in a peptide group, atoms in a mainchain group or atoms of a sidechain that are expected to be planar.

Mol	Chain	#Chirality outliers	#Planarity outliers
1	B	0	1

All (1) bond length outliers are listed below:

Mol	Chain	Res	Type	Atoms	Z	Observed(Å)	Ideal(Å)
1	B	1	G	OP3-P	-7.07	1.52	1.61

All (1) bond angle outliers are listed below:

Mol	Chain	Res	Type	Atoms	Z	Observed(°)	Ideal(°)
2	A	39	GLY	N-CA-C	-5.41	99.57	113.10

There are no chirality outliers.

All (1) planarity outliers are listed below:

Mol	Chain	Res	Type	Group
1	B	14	U	Sidechain

## 5.2 Too-close contacts ⓘ

In the following table, the Non-H and H(model) columns list the number of non-hydrogen atoms and hydrogen atoms in the chain respectively. The H(added) column lists the number of hydrogen atoms added and optimized by MolProbity. The Clashes column lists the number of clashes within the asymmetric unit, whereas Symm-Clashes lists symmetry related clashes.

Mol	Chain	Non-H	H(model)	H(added)	Clashes	Symm-Clashes
1	B	704	0	359	22	0
2	A	3630	0	3633	134	1
3	A	5	0	0	0	0
4	A	1	0	0	0	0
5	A	29	0	12	5	0
6	A	130	0	0	17	0
6	B	33	0	0	4	0
All	All	4532	0	4004	158	1

The all-atom clashscore is defined as the number of clashes found per 1000 atoms (including hydrogen atoms). The all-atom clashscore for this structure is 19.

All (158) close contacts within the same asymmetric unit are listed below, sorted by their clash magnitude.

Atom-1	Atom-2	Interatomic distance (Å)	Clash overlap (Å)
2:A:123:ILE:HD11	2:A:129:ARG:HB3	1.39	1.03
5:A:501:CTP:H5'2	5:A:501:CTP:O1B	1.65	0.95
1:B:24:C:H2'	1:B:25:C:H5''	1.51	0.92
1:B:24:C:C2'	1:B:25:C:H5''	2.00	0.91
2:A:296:GLN:HE22	2:A:403:ASN:HD22	1.17	0.89
2:A:391:SER:O	2:A:395:THR:HG22	1.80	0.82
2:A:118:LYS:HD3	2:A:118:LYS:H	1.46	0.79
2:A:120:PRO:HG2	2:A:220:VAL:HG13	1.64	0.79
2:A:2:LYS:NZ	2:A:2:LYS:HB3	1.99	0.77
1:B:24:C:H2'	1:B:25:C:C5'	2.15	0.76
2:A:76:ARG:HB3	2:A:98:PRO:HG3	1.68	0.75
2:A:120:PRO:HG3	2:A:132:PHE:CG	2.23	0.74
2:A:325:GLU:HG2	2:A:326:PHE:CD1	2.23	0.74
2:A:436:LYS:O	2:A:437:ASP:HB2	1.85	0.74
2:A:365:PHE:O	2:A:366:ARG:HB3	1.87	0.73
2:A:198:ARG:HG3	2:A:210:LYS:HE2	1.69	0.73
5:A:501:CTP:H4'	6:A:519:HOH:O	1.89	0.72
2:A:363:ARG:HD2	6:A:549:HOH:O	1.89	0.72
2:A:129:ARG:HD3	6:A:540:HOH:O	1.91	0.70
2:A:351:ASP:HB2	6:A:528:HOH:O	1.92	0.68

*Continued on next page...*



*Continued from previous page...*

Atom-1	Atom-2	Interatomic distance (Å)	Clash overlap (Å)
2:A:120:PRO:HG3	2:A:132:PHE:CD2	2.29	0.68
2:A:94:TYR:HB3	2:A:98:PRO:HA	1.75	0.68
1:B:25:C:H6	1:B:25:C:H5'	1.57	0.67
2:A:28:GLU:O	2:A:32:ARG:HG3	1.95	0.66
2:A:341:VAL:HG12	2:A:379:MET:SD	2.36	0.66
2:A:2:LYS:HG2	2:A:3:VAL:N	2.10	0.66
2:A:203:VAL:HG23	6:A:535:HOH:O	1.96	0.65
2:A:80:LEU:O	2:A:84:LYS:HG3	1.97	0.65
2:A:2:LYS:HG2	2:A:3:VAL:H	1.62	0.64
2:A:299:ARG:NH1	2:A:399:THR:O	2.29	0.64
2:A:72:LYS:HD3	2:A:73:GLU:N	2.12	0.64
2:A:94:TYR:CB	2:A:98:PRO:HA	2.28	0.64
1:B:22:G:H3'	6:B:54:HOH:O	1.98	0.64
2:A:395:THR:HG23	2:A:396:HIS:HD2	1.63	0.63
2:A:1:MET:O	2:A:1:MET:HG2	1.99	0.62
2:A:186:LEU:O	2:A:190:LYS:HG3	2.00	0.62
2:A:268:ARG:HD3	2:A:418:GLU:OE2	1.99	0.62
2:A:316:LEU:HD12	2:A:332:GLU:HG2	1.81	0.62
2:A:342:PHE:CZ	2:A:378:GLU:HB3	2.35	0.61
2:A:39:GLY:O	2:A:40:VAL:HB	2.00	0.60
2:A:262:ILE:HG13	2:A:266:ARG:HD3	1.83	0.60
2:A:260:LEU:HD21	2:A:437:ASP:OXT	2.00	0.60
2:A:270:ILE:O	2:A:274:ARG:HG3	2.02	0.59
2:A:149:ARG:HD2	6:A:517:HOH:O	2.01	0.59
5:A:501:CTP:H5'2	5:A:501:CTP:PB	2.43	0.59
1:B:17:A:O2'	1:B:18:U:H3'	2.03	0.59
2:A:161:TYR:O	2:A:170:PHE:O	2.21	0.58
2:A:269:LYS:HA	2:A:272:GLU:HG2	1.85	0.58
2:A:325:GLU:HG2	2:A:326:PHE:CE1	2.38	0.58
1:B:30:C:O2'	1:B:31:C:H5'	2.04	0.58
2:A:198:ARG:HB3	2:A:211:GLY:O	2.04	0.57
2:A:65:LEU:HB3	2:A:116:LYS:HB2	1.85	0.57
2:A:296:GLN:HE22	2:A:403:ASN:ND2	1.96	0.57
2:A:1:MET:HB3	6:A:603:HOH:O	2.04	0.57
2:A:128:ASP:O	2:A:131:PRO:HD2	2.05	0.56
1:B:19:U:O2'	1:B:20:C:OP1	2.17	0.56
2:A:123:ILE:HG23	2:A:125:SER:O	2.05	0.55
2:A:415:ILE:HG22	2:A:420:LEU:HB2	1.87	0.55
2:A:233:ASP:O	2:A:237:ARG:HG3	2.07	0.55
2:A:15:ILE:HG12	6:A:517:HOH:O	2.07	0.55
2:A:325:GLU:OE1	2:A:325:GLU:N	2.32	0.55

*Continued on next page...*

*Continued from previous page...*

Atom-1	Atom-2	Interatomic distance (Å)	Clash overlap (Å)
2:A:2:LYS:HZ2	2:A:2:LYS:HB3	1.71	0.54
2:A:8:GLU:HG3	6:A:628:HOH:O	2.07	0.54
2:A:246:MET:CE	2:A:246:MET:HA	2.37	0.54
2:A:302:ARG:O	2:A:306:GLU:HG3	2.07	0.54
2:A:262:ILE:CG1	2:A:266:ARG:HD3	2.38	0.54
1:B:24:C:O2'	1:B:25:C:H5''	2.07	0.54
2:A:129:ARG:HD2	6:A:559:HOH:O	2.06	0.54
2:A:246:MET:HE2	2:A:246:MET:HA	1.90	0.54
2:A:2:LYS:HZ3	2:A:2:LYS:HB3	1.73	0.53
1:B:25:C:H2'	1:B:26:U:O4'	2.09	0.53
2:A:123:ILE:CD1	2:A:129:ARG:HB3	2.28	0.53
2:A:289:VAL:HG22	2:A:292:ASN:ND2	2.24	0.52
2:A:198:ARG:CG	2:A:210:LYS:HE2	2.40	0.52
2:A:326:PHE:HB2	6:A:556:HOH:O	2.08	0.52
2:A:123:ILE:HG12	2:A:128:ASP:HB2	1.92	0.51
2:A:84:LYS:HB3	2:A:84:LYS:HZ2	1.75	0.51
2:A:308:LEU:HB3	2:A:315:PRO:HG3	1.92	0.51
1:B:20:C:H5''	6:B:48:HOH:O	2.10	0.51
2:A:263:GLU:C	2:A:265:GLU:H	2.13	0.51
2:A:104:VAL:O	2:A:107:VAL:HG12	2.11	0.51
2:A:72:LYS:HD3	2:A:73:GLU:HG3	1.93	0.51
2:A:80:LEU:HG	2:A:84:LYS:HD2	1.92	0.51
2:A:118:LYS:HD3	2:A:118:LYS:N	2.22	0.50
2:A:323:SER:HB2	6:A:556:HOH:O	2.11	0.50
2:A:58:LEU:HG	2:A:107:VAL:CG2	2.40	0.50
1:B:24:C:C2'	1:B:25:C:C5'	2.81	0.50
2:A:155:LEU:HD13	2:A:170:PHE:HB2	1.94	0.50
2:A:313:PHE:O	2:A:333:CYS:HB3	2.11	0.50
2:A:436:LYS:O	2:A:437:ASP:CB	2.58	0.49
2:A:280:ALA:HB2	2:A:330:LEU:HD23	1.94	0.49
1:B:27:G:O2'	1:B:28:G:H5'	2.12	0.49
2:A:118:LYS:O	2:A:119:GLU:HB2	2.13	0.49
2:A:115:TYR:CZ	2:A:124:LYS:HE3	2.48	0.49
2:A:308:LEU:CB	2:A:315:PRO:HG3	2.42	0.49
1:B:20:C:H3'	6:B:48:HOH:O	2.12	0.48
1:B:7:G:O2'	1:B:8:G:H5'	2.13	0.48
2:A:172:GLY:O	2:A:175:CYS:HB2	2.13	0.48
2:A:40:VAL:HG13	6:A:509:HOH:O	2.12	0.48
2:A:147:GLU:OE1	2:A:184:SER:HB2	2.14	0.48
1:B:17:A:O2'	1:B:18:U:P	2.72	0.47
2:A:263:GLU:C	2:A:265:GLU:N	2.68	0.47

*Continued on next page...*

*Continued from previous page...*

Atom-1	Atom-2	Interatomic distance (Å)	Clash overlap (Å)
2:A:134:HIS:O	2:A:138:GLU:HG3	2.15	0.47
2:A:353:ARG:HB3	6:A:528:HOH:O	2.15	0.47
2:A:80:LEU:CD1	2:A:92:ILE:HG12	2.45	0.46
2:A:117:LEU:N	2:A:117:LEU:HD12	2.30	0.46
2:A:413:GLU:OE1	2:A:415:ILE:HD11	2.14	0.46
2:A:306:GLU:HA	2:A:309:GLU:HG2	1.96	0.46
2:A:97:HIS:HE1	2:A:113:PRO:O	1.98	0.46
2:A:161:TYR:O	2:A:170:PHE:N	2.49	0.46
2:A:173:TYR:HB2	5:A:501:CTP:H3'	1.97	0.46
2:A:140:ARG:NH1	6:A:513:HOH:O	2.44	0.46
1:B:6:G:O2'	1:B:7:G:H5'	2.15	0.45
2:A:123:ILE:CG2	2:A:125:SER:O	2.65	0.45
2:A:136:TRP:HE3	2:A:137:LEU:HD12	1.80	0.45
1:B:33:C:H5'	6:B:64:HOH:O	2.17	0.45
2:A:73:GLU:O	2:A:77:GLU:HG3	2.16	0.45
2:A:305:PHE:CE1	2:A:315:PRO:HB2	2.52	0.45
2:A:193:ARG:HD3	2:A:246:MET:HG3	1.98	0.45
1:B:32:A:O2'	2:A:291:ASP:OD1	2.35	0.45
2:A:78:ARG:NH1	6:A:570:HOH:O	2.50	0.44
2:A:103:VAL:HA	2:A:107:VAL:O	2.17	0.44
2:A:154:PHE:HE1	2:A:253:PHE:HB3	1.82	0.44
2:A:396:HIS:O	2:A:399:THR:HG22	2.18	0.44
2:A:325:GLU:CD	2:A:325:GLU:H	2.18	0.44
2:A:255:LYS:HA	2:A:256:PRO:HD3	1.90	0.44
1:B:17:A:HO2'	1:B:18:U:H3'	1.83	0.44
2:A:198:ARG:CB	2:A:210:LYS:HE2	2.48	0.43
2:A:267:LEU:O	2:A:271:VAL:HG23	2.18	0.43
2:A:27:ALA:CB	2:A:107:VAL:HG11	2.48	0.43
2:A:4:GLU:O	2:A:8:GLU:HG2	2.18	0.43
2:A:277:ALA:O	2:A:332:GLU:HA	2.19	0.43
2:A:130:THR:HG23	5:A:501:CTP:O2'	2.18	0.43
2:A:130:THR:HB	2:A:131:PRO:HD3	2.01	0.43
1:B:25:C:O2'	1:B:26:U:H5'	2.18	0.43
2:A:263:GLU:H	2:A:263:GLU:CD	2.23	0.43
2:A:320:PHE:HA	2:A:328:TYR:O	2.19	0.43
2:A:263:GLU:HG2	2:A:266:ARG:HB2	2.00	0.42
2:A:269:LYS:O	2:A:272:GLU:HG2	2.19	0.42
2:A:7:LEU:O	2:A:11:LEU:HG	2.18	0.42
2:A:207:GLU:OE1	2:A:209:ARG:NH1	2.51	0.42
2:A:92:ILE:N	2:A:92:ILE:HD12	2.34	0.42
2:A:265:GLU:HG3	2:A:269:LYS:NZ	2.34	0.42

*Continued on next page...*

Continued from previous page...

Atom-1	Atom-2	Interatomic distance (Å)	Clash overlap (Å)
2:A:73:GLU:N	2:A:73:GLU:OE1	2.37	0.42
1:B:17:A:HO2'	1:B:18:U:P	2.43	0.42
2:A:154:PHE:CE1	2:A:253:PHE:HB3	2.55	0.42
2:A:296:GLN:NE2	2:A:403:ASN:HD22	2.00	0.42
2:A:412:PHE:C	2:A:412:PHE:CD1	2.93	0.42
2:A:135:LYS:HE3	6:A:542:HOH:O	2.21	0.41
2:A:11:LEU:HD22	2:A:15:ILE:HD11	2.02	0.41
2:A:74:GLU:OE1	2:A:78:ARG:HG2	2.21	0.41
2:A:94:TYR:HB2	2:A:98:PRO:HA	2.01	0.41
2:A:215:PHE:CE1	2:A:225:ASN:HB2	2.56	0.41
2:A:84:LYS:HB3	2:A:84:LYS:NZ	2.35	0.41
2:A:406:GLU:HB3	2:A:409:ARG:NH2	2.36	0.41
2:A:359:LEU:CD2	2:A:367:PRO:HG3	2.50	0.40
2:A:280:ALA:HA	2:A:329:LEU:O	2.21	0.40
2:A:429:LEU:O	2:A:433:MET:HG3	2.22	0.40

All (1) symmetry-related close contacts are listed below. The label for Atom-2 includes the symmetry operator and encoded unit-cell translations to be applied.

Atom-1	Atom-2	Interatomic distance (Å)	Clash overlap (Å)
2:A:365:PHE:O	2:A:434:GLY:O[7_645]	2.19	0.01

## 5.3 Torsion angles [i](#)

### 5.3.1 Protein backbone [i](#)

In the following table, the Percentiles column shows the percent Ramachandran outliers of the chain as a percentile score with respect to all X-ray entries followed by that with respect to entries of similar resolution.

The Analysed column shows the number of residues for which the backbone conformation was analysed, and the total number of residues.

Mol	Chain	Analysed	Favoured	Allowed	Outliers	Percentiles
2	A	435/437 (100%)	405 (93%)	21 (5%)	9 (2%)	<b>7</b> <b>11</b>

All (9) Ramachandran outliers are listed below:

Mol	Chain	Res	Type
2	A	3	VAL

Continued on next page...

*Continued from previous page...*

Mol	Chain	Res	Type
2	A	37	GLU
2	A	40	VAL
2	A	161	TYR
2	A	260	LEU
2	A	119	GLU
2	A	162	GLY
2	A	222	GLU
2	A	366	ARG

### 5.3.2 Protein sidechains ⓘ

In the following table, the Percentiles column shows the percent sidechain outliers of the chain as a percentile score with respect to all X-ray entries followed by that with respect to entries of similar resolution.

The Analysed column shows the number of residues for which the sidechain conformation was analysed, and the total number of residues.

Mol	Chain	Analysed	Rotameric	Outliers	Percentiles	
2	A	387/387 (100%)	368 (95%)	19 (5%)	25	47

All (19) residues with a non-rotameric sidechain are listed below:

Mol	Chain	Res	Type
2	A	19	GLU
2	A	72	LYS
2	A	117	LEU
2	A	118	LYS
2	A	129	ARG
2	A	145	GLU
2	A	241	LEU
2	A	258	HIS
2	A	261	GLU
2	A	274	ARG
2	A	321	LYS
2	A	325	GLU
2	A	340	ARG
2	A	353	ARG
2	A	362	ASN
2	A	378	GLU
2	A	395	THR
2	A	419	LYS

*Continued on next page...*

*Continued from previous page...*

Mol	Chain	Res	Type
2	A	437	ASP

Some sidechains can be flipped to improve hydrogen bonding and reduce clashes. All (6) such sidechains are listed below:

Mol	Chain	Res	Type
2	A	97	HIS
2	A	146	ASN
2	A	234	ASN
2	A	334	GLN
2	A	396	HIS
2	A	403	ASN

### 5.3.3 RNA ⓘ

Mol	Chain	Analysed	Backbone Outliers	Pucker Outliers
1	B	32/33 (96%)	6 (18%)	3 (9%)

All (6) RNA backbone outliers are listed below:

Mol	Chain	Res	Type
1	B	10	C
1	B	17	A
1	B	18	U
1	B	19	U
1	B	20	C
1	B	25	C

All (3) RNA pucker outliers are listed below:

Mol	Chain	Res	Type
1	B	17	A
1	B	19	U
1	B	32	A

## 5.4 Non-standard residues in protein, DNA, RNA chains ⓘ

There are no non-standard protein/DNA/RNA residues in this entry.

## 5.5 Carbohydrates

There are no carbohydrates in this entry.

## 5.6 Ligand geometry

Of 3 ligands modelled in this entry, 1 is monoatomic - leaving 2 for Mogul analysis.

In the following table, the Counts columns list the number of bonds (or angles) for which Mogul statistics could be retrieved, the number of bonds (or angles) that are observed in the model and the number of bonds (or angles) that are defined in the Chemical Component Dictionary. The Link column lists molecule types, if any, to which the group is linked. The Z score for a bond length (or angle) is the number of standard deviations the observed value is removed from the expected value. A bond length (or angle) with  $|Z| > 2$  is considered an outlier worth inspection. RMSZ is the root-mean-square of all Z scores of the bond lengths (or angles).

Mol	Type	Chain	Res	Link	Bond lengths			Bond angles		
					Counts	RMSZ	# Z  > 2	Counts	RMSZ	# Z  > 2
3	SO4	A	502	-	4,4,4	0.30	0	6,6,6	0.12	0
5	CTP	A	501	4	23,30,30	0.84	0	30,47,47	1.29	4 (13%)

In the following table, the Chirals column lists the number of chiral outliers, the number of chiral centers analysed, the number of these observed in the model and the number defined in the Chemical Component Dictionary. Similar counts are reported in the Torsion and Rings columns. '-' means no outliers of that kind were identified.

Mol	Type	Chain	Res	Link	Chirals	Torsions	Rings
5	CTP	A	501	4	-	6/20/38/38	0/2/2/2

There are no bond length outliers.

All (4) bond angle outliers are listed below:

Mol	Chain	Res	Type	Atoms	Z	Observed(°)	Ideal(°)
5	A	501	CTP	C2-N3-C4	3.59	119.98	116.34
5	A	501	CTP	PB-O3B-PG	-2.85	123.05	132.83
5	A	501	CTP	PB-O3A-PA	-2.81	123.19	132.83
5	A	501	CTP	O2G-PG-O1G	2.14	119.06	110.68

There are no chirality outliers.

All (6) torsion outliers are listed below:

Mol	Chain	Res	Type	Atoms
5	A	501	CTP	C2'-C1'-N1-C6

*Continued on next page...*

*Continued from previous page...*

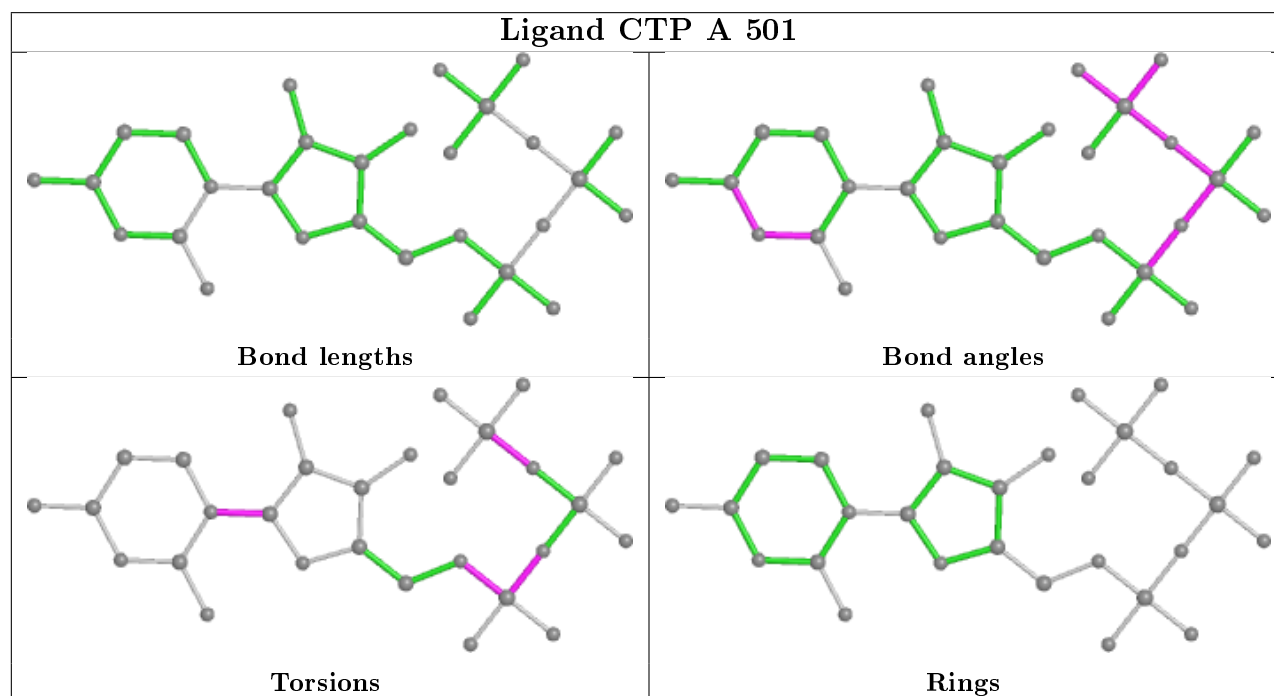
Mol	Chain	Res	Type	Atoms
5	A	501	CTP	C5'-O5'-PA-O3A
5	A	501	CTP	PB-O3A-PA-O5'
5	A	501	CTP	C5'-O5'-PA-O1A
5	A	501	CTP	C5'-O5'-PA-O2A
5	A	501	CTP	PB-O3B-PG-O1G

There are no ring outliers.

1 monomer is involved in 5 short contacts:

Mol	Chain	Res	Type	Clashes	Symm-Clashes
5	A	501	CTP	5	0

The following is a two-dimensional graphical depiction of Mogul quality analysis of bond lengths, bond angles, torsion angles, and ring geometry for all instances of the Ligand of Interest. In addition, ligands with molecular weight > 250 and outliers as shown on the validation Tables will also be included. For torsion angles, if less than 5% of the Mogul distribution of torsion angles is within 10 degrees of the torsion angle in question, then that torsion angle is considered an outlier. Any bond that is central to one or more torsion angles identified as an outlier by Mogul will be highlighted in the graph. For rings, the root-mean-square deviation (RMSD) between the ring in question and similar rings identified by Mogul is calculated over all ring torsion angles. If the average RMSD is greater than 60 degrees and the minimal RMSD between the ring in question and any Mogul-identified rings is also greater than 60 degrees, then that ring is considered an outlier. The outliers are highlighted in purple. The color gray indicates Mogul did not find sufficient equivalents in the CSD to analyse the geometry.





## 5.7 Other polymers

There are no such residues in this entry.

## 5.8 Polymer linkage issues

There are no chain breaks in this entry.

## 6 Fit of model and data ⓘ

### 6.1 Protein, DNA and RNA chains ⓘ

In the following table, the column labelled ‘#RSRZ> 2’ contains the number (and percentage) of RSRZ outliers, followed by percent RSRZ outliers for the chain as percentile scores relative to all X-ray entries and entries of similar resolution. The OWAB column contains the minimum, median, 95<sup>th</sup> percentile and maximum values of the occupancy-weighted average B-factor per residue. The column labelled ‘Q< 0.9’ lists the number of (and percentage) of residues with an average occupancy less than 0.9.

Mol	Chain	Analysed	<RSRZ>	#RSRZ>2			OWAB(Å <sup>2</sup> )	Q<0.9
1	B	33/33 (100%)	-0.09	2 (6%)	21	22	38, 54, 76, 78	0
2	A	437/437 (100%)	0.03	25 (5%)	23	25	22, 43, 67, 97	0
All	All	470/470 (100%)	0.02	27 (5%)	23	25	22, 43, 71, 97	0

All (27) RSRZ outliers are listed below:

Mol	Chain	Res	Type	RSRZ
2	A	94	TYR	5.7
2	A	1	MET	5.3
2	A	362	ASN	4.6
2	A	258	HIS	4.1
2	A	260	LEU	4.0
2	A	29	GLU	3.8
2	A	18	GLU	2.9
2	A	80	LEU	2.9
2	A	22	ARG	2.9
2	A	418	GLU	2.8
2	A	122	ASN	2.7
2	A	194	ARG	2.7
2	A	36	ASP	2.7
2	A	437	ASP	2.6
2	A	25	ARG	2.6
2	A	4	GLU	2.6
2	A	259	PRO	2.4
2	A	19	GLU	2.4
2	A	8	GLU	2.3
2	A	5	GLU	2.3
2	A	72	LYS	2.2
1	B	28	G	2.2
2	A	261	GLU	2.2
2	A	366	ARG	2.1

*Continued on next page...*

*Continued from previous page...*

Mol	Chain	Res	Type	RSRZ
1	B	18	U	2.1
2	A	353	ARG	2.1
2	A	222	GLU	2.0

## 6.2 Non-standard residues in protein, DNA, RNA chains [i](#)

There are no non-standard protein/DNA/RNA residues in this entry.

## 6.3 Carbohydrates [i](#)

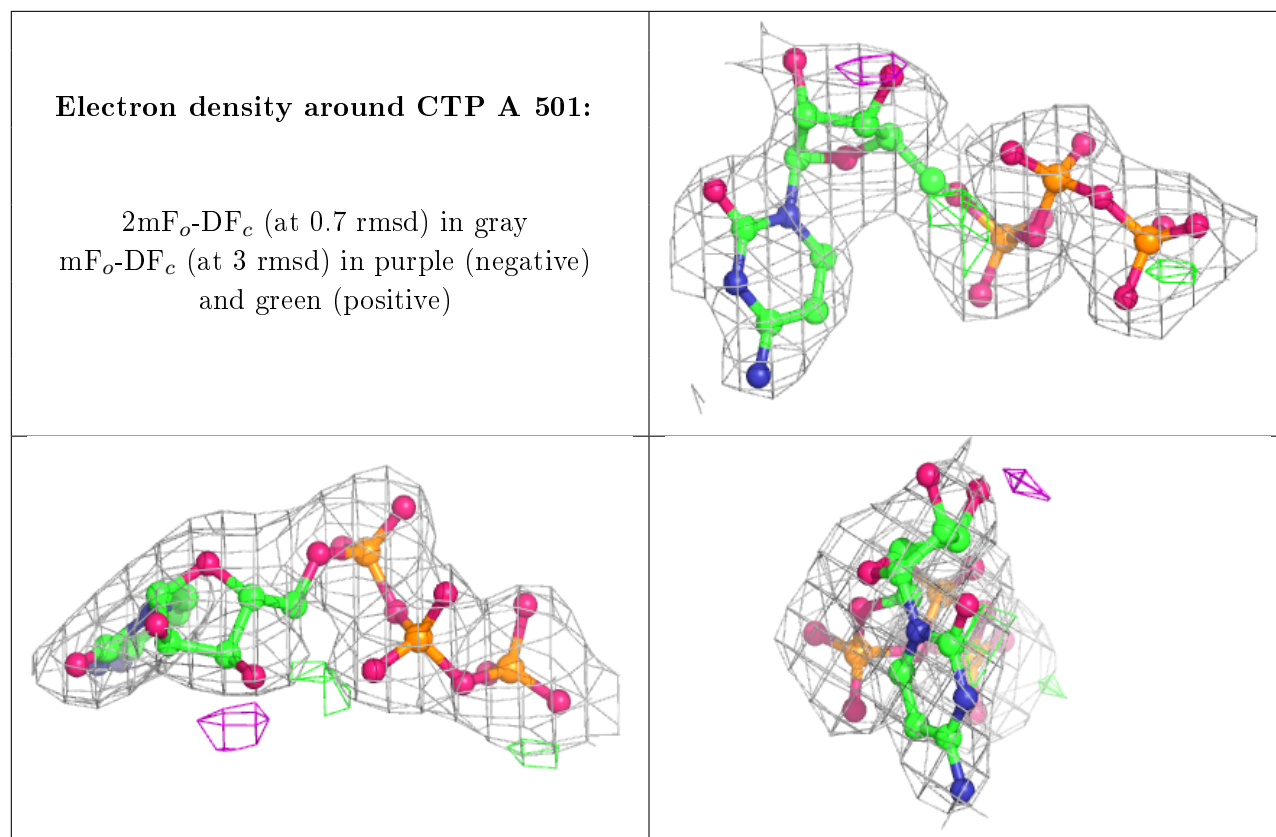
There are no carbohydrates in this entry.

## 6.4 Ligands [i](#)

In the following table, the Atoms column lists the number of modelled atoms in the group and the number defined in the chemical component dictionary. The B-factors column lists the minimum, median, 95<sup>th</sup> percentile and maximum values of B factors of atoms in the group. The column labelled 'Q< 0.9' lists the number of atoms with occupancy less than 0.9.

Mol	Type	Chain	Res	Atoms	RSCC	RSR	B-factors( $\text{\AA}^2$ )	Q<0.9
4	MG	A	503	1/1	0.87	0.43	80,80,80,80	0
3	SO4	A	502	5/5	0.93	0.15	74,75,75,76	0
5	CTP	A	501	29/29	0.97	0.12	38,44,47,49	0

The following is a graphical depiction of the model fit to experimental electron density of all instances of the Ligand of Interest. In addition, ligands with molecular weight > 250 and outliers as shown on the geometry validation Tables will also be included. Each fit is shown from different orientation to approximate a three-dimensional view.



## 6.5 Other polymers [i](#)

There are no such residues in this entry.