



# wwPDB X-ray Structure Validation Summary Report ⓘ

Jun 21, 2022 – 12:08 AM JST

PDB ID : 7DRR  
Title : Structure of SspE-R100A protein  
Authors : Haiyan, G.; Jinchuan, Z.; Chen, S.; Wang, L.; Wu, G.  
Deposited on : 2020-12-29  
Resolution : 3.48 Å(reported)

This is a wwPDB X-ray Structure Validation Summary Report for a publicly released PDB entry.

We welcome your comments at [validation@mail.wwpdb.org](mailto:validation@mail.wwpdb.org)

A user guide is available at

<https://www.wwpdb.org/validation/2017/XrayValidationReportHelp>

with specific help available everywhere you see the ⓘ symbol.

The types of validation reports are described at <http://www.wwpdb.org/validation/2017/FAQs#types>.

---

The following versions of software and data (see [references ⓘ](#)) were used in the production of this report:

MolProbity	:	4.02b-467
Xtriage (Phenix)	:	1.13
EDS	:	2.29
Percentile statistics	:	20191225.v01 (using entries in the PDB archive December 25th 2019)
Refmac	:	5.8.0158
CCP4	:	7.0.044 (Gargrove)
Ideal geometry (proteins)	:	Engh & Huber (2001)
Ideal geometry (DNA, RNA)	:	Parkinson et al. (1996)
Validation Pipeline (wwPDB-VP)	:	2.29

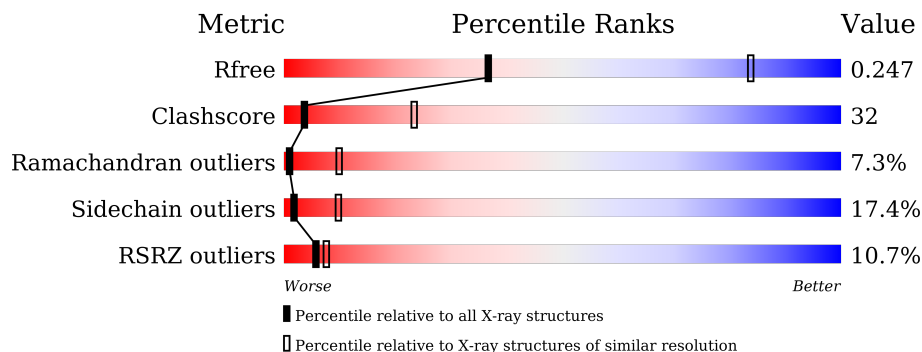
# 1 Overall quality at a glance ⓘ

The following experimental techniques were used to determine the structure:

*X-RAY DIFFRACTION*

The reported resolution of this entry is 3.48 Å.

Percentile scores (ranging between 0-100) for global validation metrics of the entry are shown in the following graphic. The table shows the number of entries on which the scores are based.



Metric	Whole archive (#Entries)	Similar resolution (#Entries, resolution range(Å))
$R_{free}$	130704	1379 (3.56-3.40)
Clashscore	141614	1461 (3.56-3.40)
Ramachandran outliers	138981	1424 (3.56-3.40)
Sidechain outliers	138945	1425 (3.56-3.40)
RSRZ outliers	127900	1289 (3.56-3.40)

The table below summarises the geometric issues observed across the polymeric chains and their fit to the electron density. The red, orange, yellow and green segments of the lower bar indicate the fraction of residues that contain outliers for  $\geq 3$ , 2, 1 and 0 types of geometric quality criteria respectively. A grey segment represents the fraction of residues that are not modelled. The numeric value for each fraction is indicated below the corresponding segment, with a dot representing fractions  $\leq 5\%$ . The upper red bar (where present) indicates the fraction of residues that have poor fit to the electron density. The numeric value is given above the bar.

Mol	Chain	Length	Quality of chain
1	A	771	<div> <div>9%</div> <div>41%</div> <div>46%</div> <div>12%</div> <div>.</div> </div>
1	B	771	<div> <div>21%</div> <div>44%</div> <div>43%</div> <div>11%</div> <div>.</div> </div>
1	C	771	<div> <div>5%</div> <div>41%</div> <div>41%</div> <div>15%</div> <div>.</div> </div>
1	D	771	<div> <div>8%</div> <div>43%</div> <div>42%</div> <div>12%</div> <div>.</div> </div>

## 2 Entry composition

There is only 1 type of molecule in this entry. The entry contains 24524 atoms, of which 0 are hydrogens and 0 are deuteriums.

In the tables below, the ZeroOcc column contains the number of atoms modelled with zero occupancy, the AltConf column contains the number of residues with at least one atom in alternate conformation and the Trace column contains the number of residues modelled with at most 2 atoms.

- Molecule 1 is a protein called SspE protein.

Mol	Chain	Residues	Atoms					ZeroOcc	AltConf	Trace
1	D	771	Total	C	N	O	S	0	0	0
			6131	3869	1076	1166	20			
1	A	771	Total	C	N	O	S	0	0	0
			6131	3869	1076	1166	20			
1	B	771	Total	C	N	O	S	0	0	0
			6131	3869	1076	1166	20			
1	C	771	Total	C	N	O	S	0	0	0
			6131	3869	1076	1166	20			

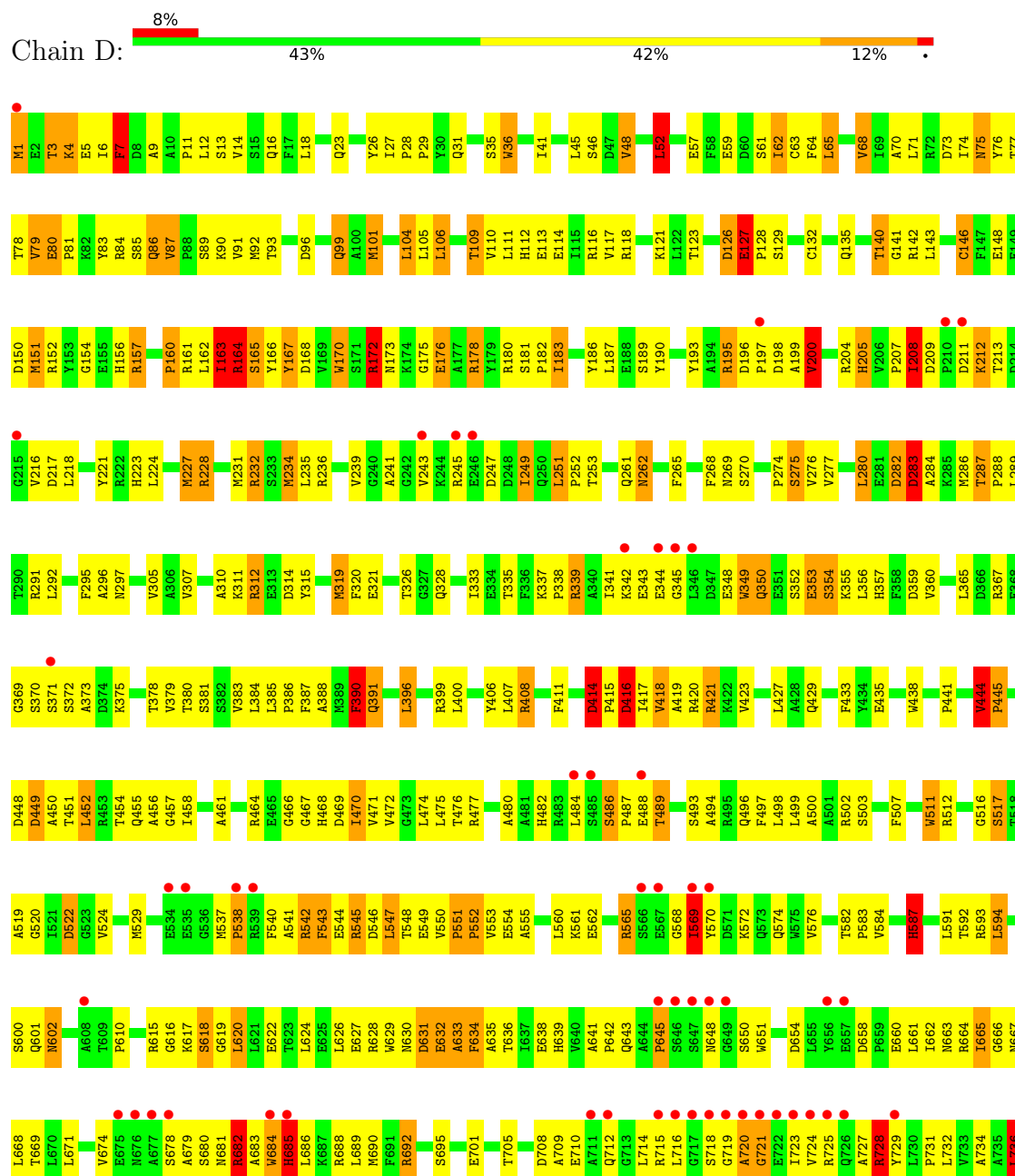
There are 4 discrepancies between the modelled and reference sequences:

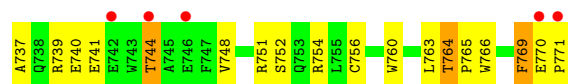
Chain	Residue	Modelled	Actual	Comment	Reference
D	100	ALA	ARG	engineered mutation	UNP A0A6I8WFL9
A	100	ALA	ARG	engineered mutation	UNP A0A6I8WFL9
B	100	ALA	ARG	engineered mutation	UNP A0A6I8WFL9
C	100	ALA	ARG	engineered mutation	UNP A0A6I8WFL9

### 3 Residue-property plots

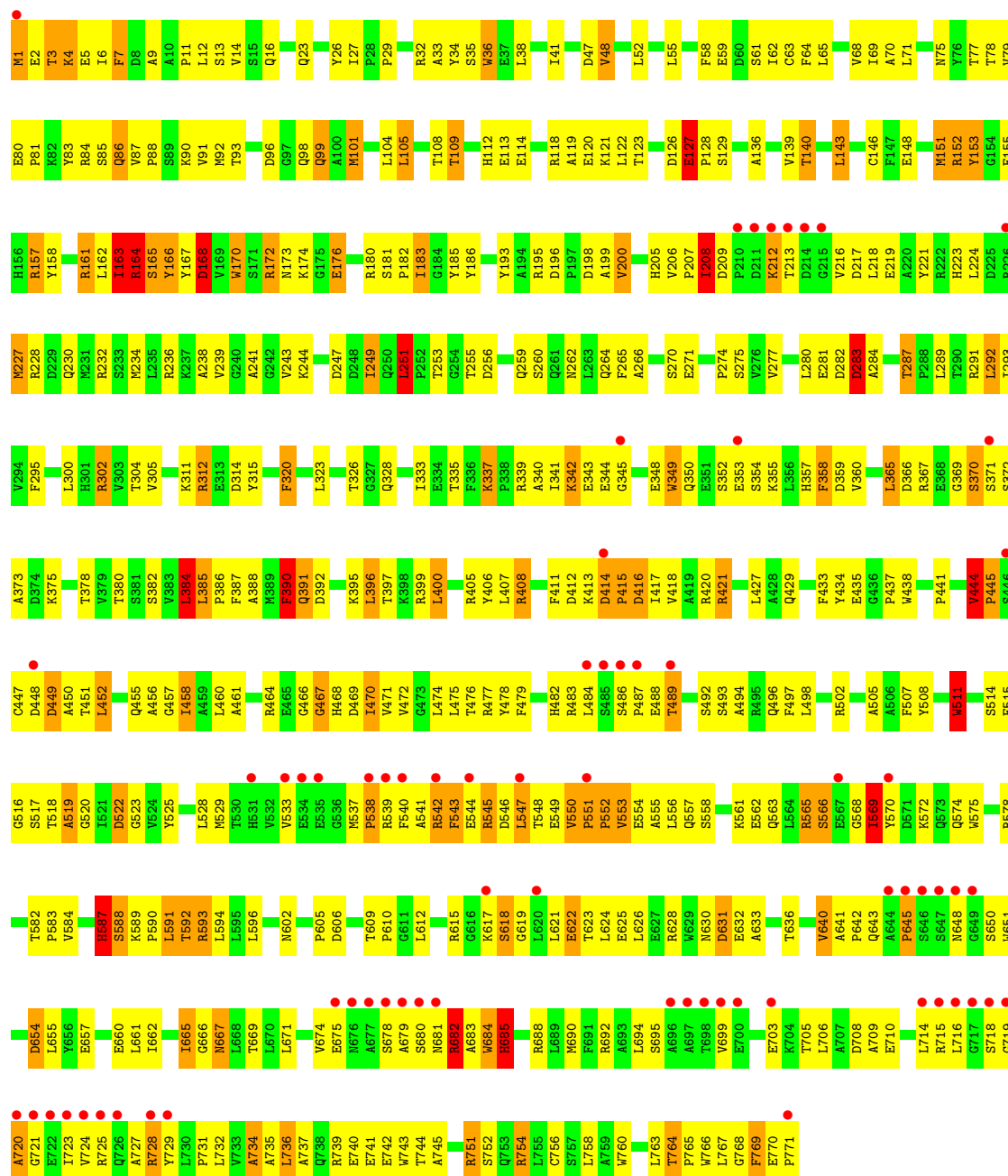
These plots are drawn for all protein, RNA, DNA and oligosaccharide chains in the entry. The first graphic for a chain summarises the proportions of the various outlier classes displayed in the second graphic. The second graphic shows the sequence view annotated by issues in geometry and electron density. Residues are color-coded according to the number of geometric quality criteria for which they contain at least one outlier: green = 0, yellow = 1, orange = 2 and red = 3 or more. A red dot above a residue indicates a poor fit to the electron density ( $RSRZ > 2$ ). Stretches of 2 or more consecutive residues without any outlier are shown as a green connector. Residues present in the sample, but not in the model, are shown in grey.

#### • Molecule 1: SspE protein

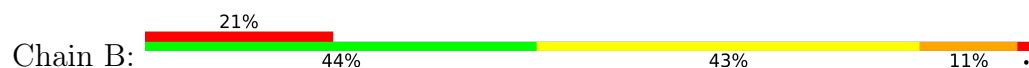


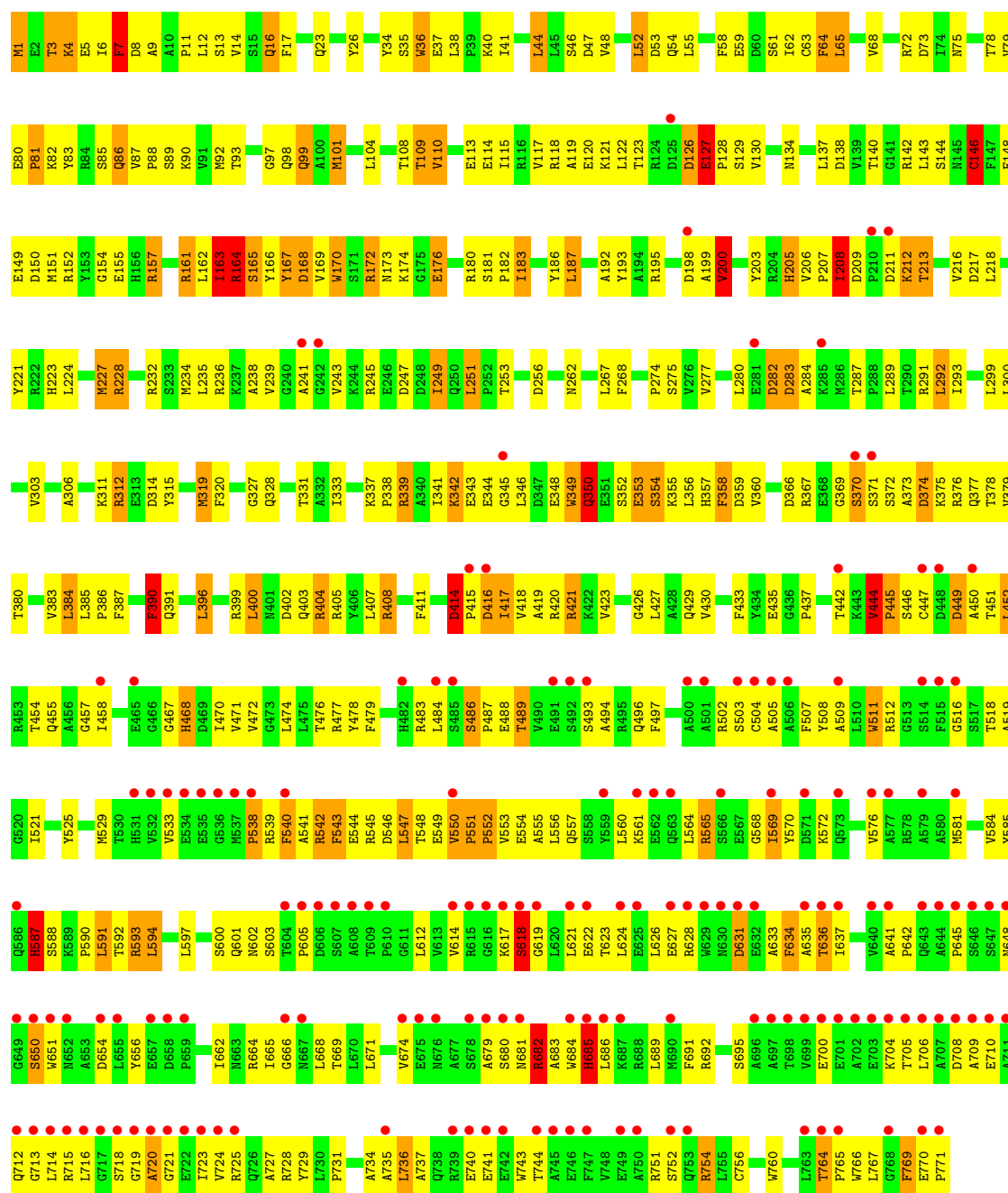


• Molecule 1: SspE protein



• Molecule 1: SspE protein







## 4 Data and refinement statistics

Property	Value	Source
Space group	P 21 21 21	Depositor
Cell constants a, b, c, $\alpha$ , $\beta$ , $\gamma$	110.03Å 137.97Å 292.35Å 90.00° 90.00° 90.00°	Depositor
Resolution (Å)	36.54 – 3.48 36.54 – 3.48	Depositor EDS
% Data completeness (in resolution range)	93.3 (36.54-3.48) 93.4 (36.54-3.48)	Depositor EDS
$R_{merge}$	(Not available)	Depositor
$R_{sym}$	(Not available)	Depositor
$\langle I/\sigma(I) \rangle$ <sup>1</sup>	2.86 (at 3.48Å)	Xtriage
Refinement program	REFMAC 5.5	Depositor
R, $R_{free}$	0.224 , 0.294 0.241 , 0.247	Depositor DCC
$R_{free}$ test set	2673 reflections (4.94%)	wwPDB-VP
Wilson B-factor (Å <sup>2</sup> )	49.7	Xtriage
Anisotropy	0.083	Xtriage
Bulk solvent $k_{sol}$ (e/Å <sup>3</sup> ), $B_{sol}$ (Å <sup>2</sup> )	0.27 , 60.8	EDS
L-test for twinning <sup>2</sup>	$\langle  L  \rangle = 0.48$ , $\langle L^2 \rangle = 0.32$	Xtriage
Estimated twinning fraction	No twinning to report.	Xtriage
$F_o, F_c$ correlation	0.86	EDS
Total number of atoms	24524	wwPDB-VP
Average B, all atoms (Å <sup>2</sup> )	79.0	wwPDB-VP

Xtriage's analysis on translational NCS is as follows: *The largest off-origin peak in the Patterson function is 2.67% of the height of the origin peak. No significant pseudotranslation is detected.*

<sup>1</sup>Intensities estimated from amplitudes.

<sup>2</sup>Theoretical values of  $\langle |L| \rangle$ ,  $\langle L^2 \rangle$  for acentric reflections are 0.5, 0.333 respectively for untwinned datasets, and 0.375, 0.2 for perfectly twinned datasets.



## 5 Model quality

### 5.1 Standard geometry

The Z score for a bond length (or angle) is the number of standard deviations the observed value is removed from the expected value. A bond length (or angle) with  $|Z| > 5$  is considered an outlier worth inspection. RMSZ is the root-mean-square of all Z scores of the bond lengths (or angles).

Mol	Chain	Bond lengths		Bond angles	
		RMSZ	$\# Z  > 5$	RMSZ	$\# Z  > 5$
1	A	0.66	3/6266 (0.0%)	0.93	14/8508 (0.2%)
1	B	0.67	2/6266 (0.0%)	0.88	13/8508 (0.2%)
1	C	0.93	12/6266 (0.2%)	1.08	32/8508 (0.4%)
1	D	0.74	8/6266 (0.1%)	0.97	20/8508 (0.2%)
All	All	0.76	25/25064 (0.1%)	0.97	79/34032 (0.2%)

Chiral center outliers are detected by calculating the chiral volume of a chiral center and verifying if the center is modelled as a planar moiety or with the opposite hand. A planarity outlier is detected by checking planarity of atoms in a peptide group, atoms in a mainchain group or atoms of a sidechain that are expected to be planar.

Mol	Chain	#Chirality outliers	#Planarity outliers
1	A	0	2
1	C	0	6
1	D	0	1
All	All	0	9

The worst 5 of 25 bond length outliers are listed below:

Mol	Chain	Res	Type	Atoms	Z	Observed(Å)	Ideal(Å)
1	C	159	TYR	CD2-CE2	-7.91	1.27	1.39
1	B	146	CYS	CB-SG	-7.87	1.68	1.82
1	D	80	GLU	CB-CG	7.46	1.66	1.52
1	A	756	CYS	CB-SG	-6.60	1.71	1.82
1	C	159	TYR	CE2-CZ	-6.55	1.30	1.38

The worst 5 of 79 bond angle outliers are listed below:

Mol	Chain	Res	Type	Atoms	Z	Observed(°)	Ideal(°)
1	C	251	LEU	CA-CB-CG	10.39	139.20	115.30
1	B	251	LEU	CA-CB-CG	9.31	136.71	115.30
1	D	152	ARG	NE-CZ-NH2	-9.03	115.79	120.30
1	C	142	ARG	NE-CZ-NH1	-8.95	115.82	120.30

*Continued on next page...*

*Continued from previous page...*

Mol	Chain	Res	Type	Atoms	Z	Observed(°)	Ideal(°)
1	D	319	MET	CB-CG-SD	-8.71	86.26	112.40

There are no chirality outliers.

5 of 9 planarity outliers are listed below:

Mol	Chain	Res	Type	Group
1	A	207	PRO	Peptide
1	A	553	VAL	Peptide
1	C	173	ASN	Peptide
1	C	79	VAL	Peptide
1	D	175	GLY	Peptide

## 5.2 Too-close contacts

In the following table, the Non-H and H(model) columns list the number of non-hydrogen atoms and hydrogen atoms in the chain respectively. The H(added) column lists the number of hydrogen atoms added and optimized by MolProbity. The Clashes column lists the number of clashes within the asymmetric unit, whereas Symm-Clashes lists symmetry-related clashes.

Mol	Chain	Non-H	H(model)	H(added)	Clashes	Symm-Clashes
1	A	6131	0	6038	380	1
1	B	6131	0	6038	374	1
1	C	6131	0	6038	419	2
1	D	6131	0	6038	380	2
All	All	24524	0	24152	1535	3

The all-atom clashscore is defined as the number of clashes found per 1000 atoms (including hydrogen atoms). The all-atom clashscore for this structure is 32.

The worst 5 of 1535 close contacts within the same asymmetric unit are listed below, sorted by their clash magnitude.

Atom-1	Atom-2	Interatomic distance (Å)	Clash overlap (Å)
1:D:126:ASP:HB3	1:D:129:SER:HB3	1.37	1.05
1:A:126:ASP:HB3	1:A:129:SER:HB3	1.36	1.04
1:C:173:ASN:HB2	1:C:176:GLU:OE2	1.57	1.02
1:D:183:ILE:HD12	1:D:183:ILE:H	1.26	0.98
1:C:243:VAL:HG11	1:C:245:ARG:HH21	1.27	0.96

All (3) symmetry-related close contacts are listed below. The label for Atom-2 includes the symmetry operator and encoded unit-cell translations to be applied.

Atom-1	Atom-2	Interatomic distance (Å)	Clash overlap (Å)
1:D:85:SER:N	1:C:211:ASP:OD2[4_457]	2.06	0.14
1:D:84:ARG:N	1:C:211:ASP:OD2[4_457]	2.15	0.05
1:A:657:GLU:OE1	1:B:236:ARG:NH1[4_447]	2.15	0.05

## 5.3 Torsion angles [i](#)

### 5.3.1 Protein backbone [i](#)

In the following table, the Percentiles column shows the percent Ramachandran outliers of the chain as a percentile score with respect to all X-ray entries followed by that with respect to entries of similar resolution.

The Analysed column shows the number of residues for which the backbone conformation was analysed, and the total number of residues.

Mol	Chain	Analysed	Favoured	Allowed	Outliers	Percentiles	
1	A	769/771 (100%)	598 (78%)	112 (15%)	59 (8%)	1	9
1	B	769/771 (100%)	597 (78%)	122 (16%)	50 (6%)	1	12
1	C	769/771 (100%)	601 (78%)	109 (14%)	59 (8%)	1	9
1	D	769/771 (100%)	600 (78%)	113 (15%)	56 (7%)	1	10
All	All	3076/3084 (100%)	2396 (78%)	456 (15%)	224 (7%)	1	10

5 of 224 Ramachandran outliers are listed below:

Mol	Chain	Res	Type
1	D	4	LYS
1	D	36	TRP
1	D	127	GLU
1	D	200	VAL
1	D	205	HIS

### 5.3.2 Protein sidechains [i](#)

In the following table, the Percentiles column shows the percent sidechain outliers of the chain as a percentile score with respect to all X-ray entries followed by that with respect to entries of similar resolution.

The Analysed column shows the number of residues for which the sidechain conformation was analysed, and the total number of residues.

Mol	Chain	Analysed	Rotameric	Outliers	Percentiles	
1	A	650/650 (100%)	541 (83%)	109 (17%)	2	11
1	B	650/650 (100%)	537 (83%)	113 (17%)	2	10
1	C	650/650 (100%)	529 (81%)	121 (19%)	1	7
1	D	650/650 (100%)	540 (83%)	110 (17%)	2	11
All	All	2600/2600 (100%)	2147 (83%)	453 (17%)	2	10

5 of 453 residues with a non-rotameric sidechain are listed below:

Mol	Chain	Res	Type
1	B	65	LEU
1	C	654	ASP
1	B	374	ASP
1	C	602	ASN
1	C	350	GLN

Sometimes sidechains can be flipped to improve hydrogen bonding and reduce clashes. 5 of 15 such sidechains are listed below:

Mol	Chain	Res	Type
1	B	31	GLN
1	C	401	ASN
1	B	377	GLN
1	C	712	GLN
1	C	98	GLN

### 5.3.3 RNA [i](#)

There are no RNA molecules in this entry.

## 5.4 Non-standard residues in protein, DNA, RNA chains [i](#)

There are no non-standard protein/DNA/RNA residues in this entry.

## 5.5 Carbohydrates [i](#)

There are no monosaccharides in this entry.

## 5.6 Ligand geometry [i](#)

There are no ligands in this entry.

## 5.7 Other polymers [i](#)

There are no such residues in this entry.

## 5.8 Polymer linkage issues [i](#)

There are no chain breaks in this entry.

## 6 Fit of model and data [i](#)

### 6.1 Protein, DNA and RNA chains [i](#)

In the following table, the column labelled ‘#RSRZ > 2’ contains the number (and percentage) of RSRZ outliers, followed by percent RSRZ outliers for the chain as percentile scores relative to all X-ray entries and entries of similar resolution. The OWAB column contains the minimum, median, 95<sup>th</sup> percentile and maximum values of the occupancy-weighted average B-factor per residue. The column labelled ‘Q < 0.9’ lists the number of (and percentage) of residues with an average occupancy less than 0.9.

Mol	Chain	Analysed	<RSRZ>	#RSRZ>2	OWAB(Å <sup>2</sup> )	Q<0.9
1	A	771/771 (100%)	0.34	69 (8%) 9 11	22, 75, 151, 187	0
1	B	771/771 (100%)	0.90	164 (21%) 0 1	16, 102, 186, 207	0
1	C	771/771 (100%)	-0.07	38 (4%) 29 28	4, 50, 132, 180	0
1	D	771/771 (100%)	0.18	58 (7%) 14 16	8, 76, 152, 195	0
All	All	3084/3084 (100%)	0.34	329 (10%) 6 7	4, 72, 168, 207	0

The worst 5 of 329 RSRZ outliers are listed below:

Mol	Chain	Res	Type	RSRZ
1	B	721	GLY	14.3
1	B	722	GLU	13.0
1	A	719	GLY	10.2
1	D	718	SER	9.5
1	A	211	ASP	9.3

### 6.2 Non-standard residues in protein, DNA, RNA chains [i](#)

There are no non-standard protein/DNA/RNA residues in this entry.

### 6.3 Carbohydrates [i](#)

There are no monosaccharides in this entry.

### 6.4 Ligands [i](#)

There are no ligands in this entry.

## 6.5 Other polymers [i](#)

There are no such residues in this entry.