



# Full wwPDB X-ray Structure Validation Report ⓘ

Sep 12, 2022 – 12:59 PM EDT

PDB ID : 8DRV  
Title : Product structure of SARS-CoV-2 Mpro C145A mutant in complex with nsp8-nsp9 (C8) cut site sequence  
Authors : Lee, J.; Kenward, C.; Worrall, L.J.; Vuckovic, M.; Paetzel, M.; Strynadka, N.C.J.  
Deposited on : 2022-07-21  
Resolution : 2.40 Å(reported)

This is a Full wwPDB X-ray Structure Validation Report for a publicly released PDB entry.

We welcome your comments at [validation@mail.wwpdb.org](mailto:validation@mail.wwpdb.org)

A user guide is available at

<https://www.wwpdb.org/validation/2017/XrayValidationReportHelp>

with specific help available everywhere you see the ⓘ symbol.

The types of validation reports are described at <http://www.wwpdb.org/validation/2017/FAQs#types>.

---

The following versions of software and data (see [references ⓘ](#)) were used in the production of this report:

MolProbity	:	4.02b-467
Mogul	:	1.8.5 (274361), CSD as541be (2020)
Xtriage (Phenix)	:	1.13
EDS	:	2.29
Percentile statistics	:	20191225.v01 (using entries in the PDB archive December 25th 2019)
Refmac	:	5.8.0158
CCP4	:	7.0.044 (Gargrove)
Ideal geometry (proteins)	:	Engh & Huber (2001)
Ideal geometry (DNA, RNA)	:	Parkinson et al. (1996)
Validation Pipeline (wwPDB-VP)	:	2.29

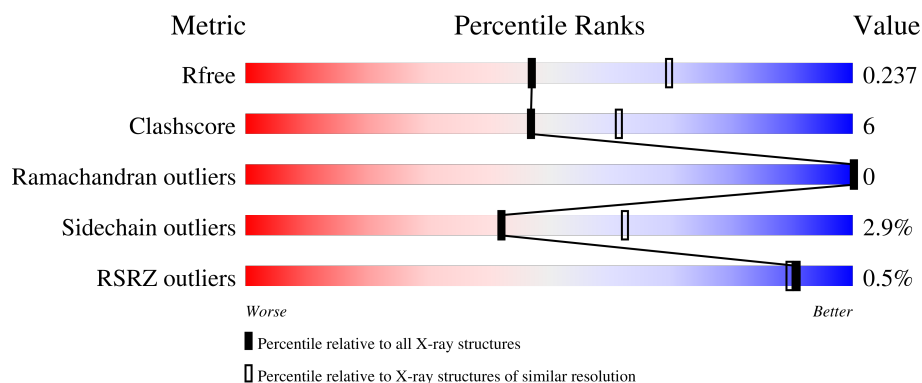
# 1 Overall quality at a glance

The following experimental techniques were used to determine the structure:

*X-RAY DIFFRACTION*




The reported resolution of this entry is 2.40 Å.

Percentile scores (ranging between 0-100) for global validation metrics of the entry are shown in the following graphic. The table shows the number of entries on which the scores are based.



Metric	Whole archive (#Entries)	Similar resolution (#Entries, resolution range(Å))
$R_{free}$	130704	3907 (2.40-2.40)
Clashscore	141614	4398 (2.40-2.40)
Ramachandran outliers	138981	4318 (2.40-2.40)
Sidechain outliers	138945	4319 (2.40-2.40)
RSRZ outliers	127900	3811 (2.40-2.40)

The table below summarises the geometric issues observed across the polymeric chains and their fit to the electron density. The red, orange, yellow and green segments of the lower bar indicate the fraction of residues that contain outliers for  $\geq 3$ , 2, 1 and 0 types of geometric quality criteria respectively. A grey segment represents the fraction of residues that are not modelled. The numeric value for each fraction is indicated below the corresponding segment, with a dot representing fractions  $\leq 5\%$ . The upper red bar (where present) indicates the fraction of residues that have poor fit to the electron density. The numeric value is given above the bar.

Mol	Chain	Length	Quality of chain
1	A	306	 87% 12% .
1	B	306	 78% 21% .
1	C	306	 87% 11% ..
1	D	306	 81% 17% ..

## 2 Entry composition

There are 3 unique types of molecules in this entry. The entry contains 9660 atoms, of which 0 are hydrogens and 0 are deuteriums.

In the tables below, the ZeroOcc column contains the number of atoms modelled with zero occupancy, the AltConf column contains the number of residues with at least one atom in alternate conformation and the Trace column contains the number of residues modelled with at most 2 atoms.

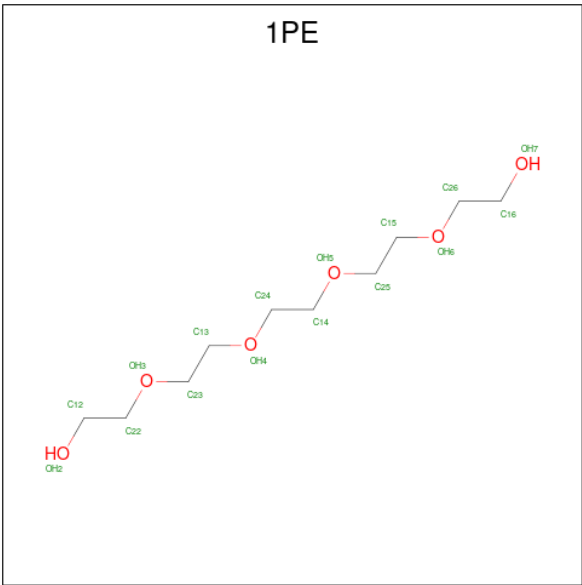
- Molecule 1 is a protein called Fusion protein of 3C-like proteinase nsp5 and nsp8-nsp9 (C8) cut site.

Mol	Chain	Residues	Atoms					ZeroOcc	AltConf	Trace
1	A	306	Total	C	N	O	S	0	1	0
			2370	1501	401	447	21			
1	B	306	Total	C	N	O	S	0	0	0
			2367	1499	403	444	21			
1	C	302	Total	C	N	O	S	0	2	0
			2341	1479	399	443	20			
1	D	303	Total	C	N	O	S	0	0	0
			2325	1472	395	437	21			

There are 4 discrepancies between the modelled and reference sequences:

Chain	Residue	Modelled	Actual	Comment	Reference
A	145	ALA	CYS	engineered mutation	UNP P0DTD1
B	145	ALA	CYS	engineered mutation	UNP P0DTD1
C	145	ALA	CYS	engineered mutation	UNP P0DTD1
D	145	ALA	CYS	engineered mutation	UNP P0DTD1

- Molecule 2 is PENTAETHYLENE GLYCOL (three-letter code: 1PE) (formula: C<sub>10</sub>H<sub>22</sub>O<sub>6</sub>).



Mol	Chain	Residues	Atoms			ZeroOcc	AltConf
2	B	1	Total	C	O	0	0
			10	6	4		

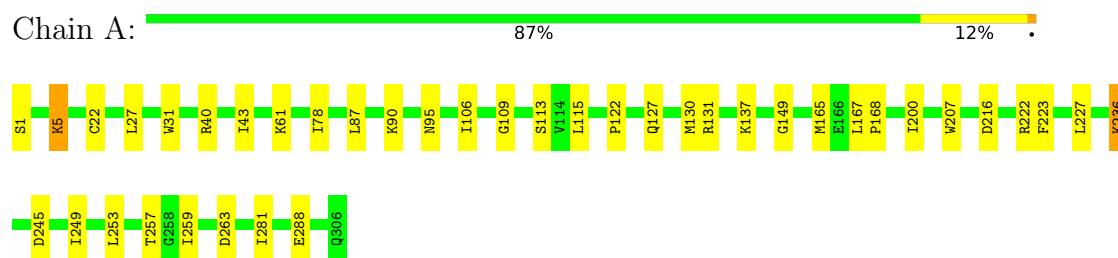
- Molecule 3 is water.

Mol	Chain	Residues	Atoms		ZeroOcc	AltConf
3	A	71	Total	O	0	0
			71	71		
3	B	75	Total	O	0	0
			75	75		
3	C	61	Total	O	0	0
			61	61		
3	D	40	Total	O	0	0
			40	40		

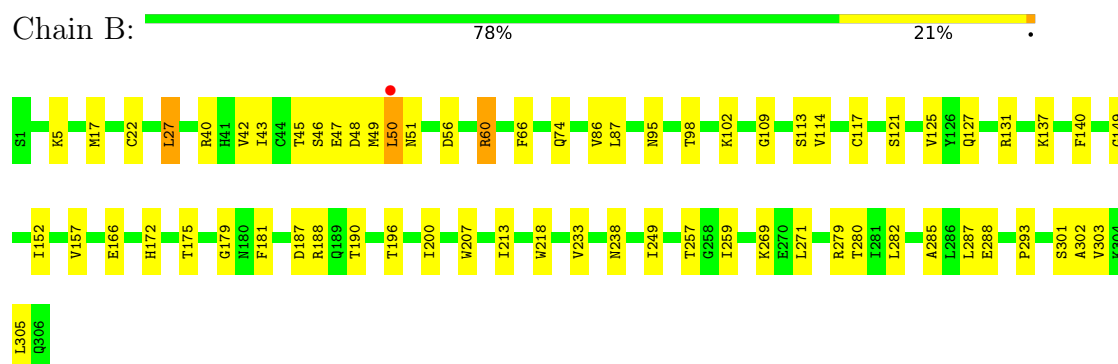
### 3 Residue-property plots

These plots are drawn for all protein, RNA, DNA and oligosaccharide chains in the entry. The first graphic for a chain summarises the proportions of the various outlier classes displayed in the second graphic. The second graphic shows the sequence view annotated by issues in geometry and electron density. Residues are color-coded according to the number of geometric quality criteria for which they contain at least one outlier: green = 0, yellow = 1, orange = 2 and red = 3 or more. A red dot above a residue indicates a poor fit to the electron density ( $RSRZ > 2$ ). Stretches of 2 or more consecutive residues without any outlier are shown as a green connector. Residues present in the sample, but not in the model, are shown in grey.

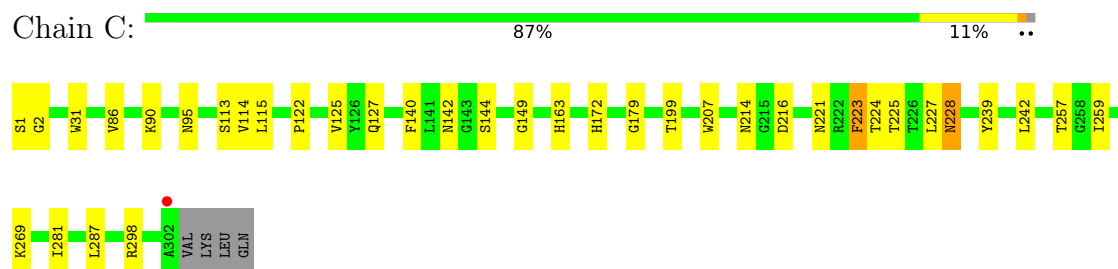
- Molecule 1: Fusion protein of 3C-like proteinase nsp5 and nsp8-nsp9 (C8) cut site



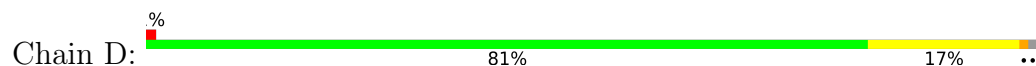
- Molecule 1: Fusion protein of 3C-like proteinase nsp5 and nsp8-nsp9 (C8) cut site

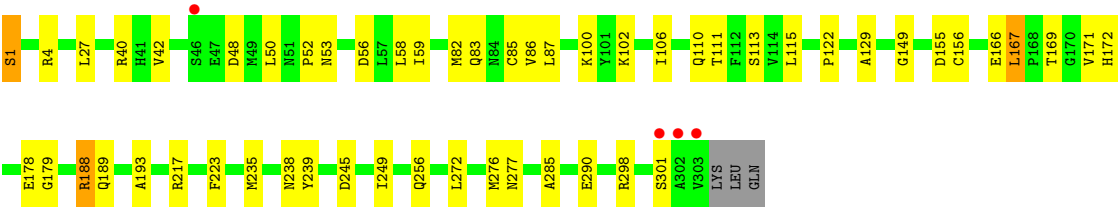


- Molecule 1: Fusion protein of 3C-like proteinase nsp5 and nsp8-nsp9 (C8) cut site



- Molecule 1: Fusion protein of 3C-like proteinase nsp5 and nsp8-nsp9 (C8) cut site





## 4 Data and refinement statistics

Property	Value	Source
Space group	P 21 21 21	Depositor
Cell constants a, b, c, $\alpha$ , $\beta$ , $\gamma$	85.79Å 117.20Å 121.38Å 90.00° 90.00° 90.00°	Depositor
Resolution (Å)	60.69 – 2.40 70.06 – 2.40	Depositor EDS
% Data completeness (in resolution range)	99.8 (60.69-2.40) 99.9 (70.06-2.40)	Depositor EDS
$R_{merge}$	0.18	Depositor
$R_{sym}$	(Not available)	Depositor
$\langle I/\sigma(I) \rangle$ <sup>1</sup>	2.08 (at 2.40Å)	Xtriage
Refinement program	PHENIX 1.20.1_4487	Depositor
R, $R_{free}$	0.178 , 0.240 0.175 , 0.237	Depositor DCC
$R_{free}$ test set	2441 reflections (5.03%)	wwPDB-VP
Wilson B-factor (Å <sup>2</sup> )	45.9	Xtriage
Anisotropy	0.133	Xtriage
Bulk solvent $k_{sol}$ (e/Å <sup>3</sup> ), $B_{sol}$ (Å <sup>2</sup> )	0.31 , 34.6	EDS
L-test for twinning <sup>2</sup>	$\langle  L  \rangle = 0.51$ , $\langle L^2 \rangle = 0.34$	Xtriage
Estimated twinning fraction	0.000 for -h,l,k	Xtriage
$F_o, F_c$ correlation	0.96	EDS
Total number of atoms	9660	wwPDB-VP
Average B, all atoms (Å <sup>2</sup> )	53.0	wwPDB-VP

Xtriage's analysis on translational NCS is as follows: *The largest off-origin peak in the Patterson function is 4.45% of the height of the origin peak. No significant pseudotranslation is detected.*

<sup>1</sup>Intensities estimated from amplitudes.

<sup>2</sup>Theoretical values of  $\langle |L| \rangle$ ,  $\langle L^2 \rangle$  for acentric reflections are 0.5, 0.333 respectively for untwinned datasets, and 0.375, 0.2 for perfectly twinned datasets.

## 5 Model quality [i](#)

### 5.1 Standard geometry [i](#)

Bond lengths and bond angles in the following residue types are not validated in this section: 1PE

The Z score for a bond length (or angle) is the number of standard deviations the observed value is removed from the expected value. A bond length (or angle) with  $|Z| > 5$  is considered an outlier worth inspection. RMSZ is the root-mean-square of all Z scores of the bond lengths (or angles).

Mol	Chain	Bond lengths		Bond angles	
		RMSZ	# Z  >5	RMSZ	# Z  >5
1	A	0.47	0/2422	0.67	0/3292
1	B	0.45	0/2419	0.65	0/3286
1	C	0.45	0/2393	0.63	0/3255
1	D	0.41	0/2377	0.61	0/3233
All	All	0.45	0/9611	0.64	0/13066

There are no bond length outliers.

There are no bond angle outliers.

There are no chirality outliers.

There are no planarity outliers.

### 5.2 Too-close contacts [i](#)

In the following table, the Non-H and H(model) columns list the number of non-hydrogen atoms and hydrogen atoms in the chain respectively. The H(added) column lists the number of hydrogen atoms added and optimized by MolProbity. The Clashes column lists the number of clashes within the asymmetric unit, whereas Symm-Clashes lists symmetry-related clashes.

Mol	Chain	Non-H	H(model)	H(added)	Clashes	Symm-Clashes
1	A	2370	0	2319	27	0
1	B	2367	0	2324	39	0
1	C	2341	0	2268	24	0
1	D	2325	0	2261	33	0
2	B	10	0	12	0	0
3	A	71	0	0	2	0
3	B	75	0	0	1	0
3	C	61	0	0	1	0
3	D	40	0	0	2	0
All	All	9660	0	9184	116	0



The all-atom clashscore is defined as the number of clashes found per 1000 atoms (including hydrogen atoms). The all-atom clashscore for this structure is 6.

All (116) close contacts within the same asymmetric unit are listed below, sorted by their clash magnitude.

Atom-1	Atom-2	Interatomic distance (Å)	Clash overlap (Å)
1:C:2:GLY:H	1:C:214:ASN:HD21	1.16	0.91
1:A:167:LEU:HD23	1:B:303:VAL:HG22	1.75	0.68
1:A:5:LYS:HD3	3:A:402:HOH:O	1.95	0.66
1:C:221:ASN:HD21	1:C:223:PHE:HD2	1.41	0.66
1:B:213:ILE:HG12	1:B:302:ALA:HB2	1.78	0.65
1:A:245:ASP:O	1:A:249:ILE:HG12	1.98	0.64
1:B:51:ASN:HA	1:B:188:ARG:NH1	2.14	0.62
1:A:131:ARG:HD3	1:A:137:LYS:HG3	1.82	0.61
1:D:53:ASN:ND2	1:D:56:ASP:OD2	2.35	0.60
1:C:86:VAL:HG13	1:C:179:GLY:HA2	1.82	0.60
1:D:86:VAL:HG13	1:D:179:GLY:HA2	1.84	0.60
1:D:106:ILE:HD11	1:D:110:GLN:HG3	1.86	0.58
1:A:109:GLY:HA2	1:A:200:ILE:HD13	1.85	0.58
1:D:52:PRO:O	1:D:188:ARG:NH2	2.34	0.57
1:D:50:LEU:HA	1:D:189:GLN:HB2	1.85	0.56
1:B:166:GLU:OE1	1:D:1:SER:HB2	2.05	0.56
1:A:257:THR:HB	1:A:259:ILE:HD12	1.87	0.56
1:D:40:ARG:HA	1:D:87:LEU:HG	1.88	0.55
1:A:1:SER:N	1:C:140:PHE:O	2.39	0.55
1:D:100:LYS:HD3	1:D:156:CYS:HB2	1.89	0.55
1:D:245:ASP:O	1:D:249:ILE:HG13	2.07	0.54
1:B:109:GLY:HA2	1:B:200:ILE:HD13	1.91	0.53
1:C:113:SER:OG	1:C:127:GLN:NE2	2.42	0.53
1:D:111:THR:HG22	1:D:129:ALA:HB2	1.92	0.52
1:D:256:GLN:NE2	1:D:301:SER:O	2.42	0.51
1:A:22:CYS:SG	1:A:61:LYS:HE2	2.50	0.51
1:D:276:MET:HG3	1:D:285:ALA:O	2.11	0.51
1:C:257:THR:HB	1:C:259:ILE:HD13	1.92	0.51
1:C:163:HIS:CE1	1:C:172:HIS:HB3	2.47	0.50
1:B:257:THR:HB	1:B:259:ILE:HD12	1.93	0.49
1:B:46:SER:HA	1:B:49:MET:HG2	1.94	0.49
1:C:207:TRP:HZ3	1:C:287:LEU:HD23	1.78	0.48
1:A:165:MET:HB3	1:B:305:LEU:HD23	1.94	0.48
1:A:113:SER:O	1:A:149:GLY:HA2	2.13	0.48
1:D:83:GLN:HE22	1:D:178:GLU:HG2	1.77	0.48
1:B:175:THR:HG22	1:B:181:PHE:HA	1.96	0.48
1:B:213:ILE:HG12	1:B:302:ALA:CB	2.44	0.48

*Continued on next page...*

*Continued from previous page...*

Atom-1	Atom-2	Interatomic distance (Å)	Clash overlap (Å)
1:B:207:TRP:CE2	1:B:288:GLU:HB2	2.48	0.48
1:D:277:ASN:N	3:D:402:HOH:O	2.46	0.48
1:B:166:GLU:CD	1:D:1:SER:HB2	2.34	0.47
1:B:86:VAL:HG13	1:B:179:GLY:HA2	1.96	0.47
1:B:238:ASN:ND2	3:B:505:HOH:O	2.47	0.47
1:C:2:GLY:H	1:C:214:ASN:ND2	1.98	0.47
1:D:4:ARG:NH1	3:D:403:HOH:O	2.48	0.47
1:D:113:SER:O	1:D:149:GLY:HA2	2.15	0.47
1:A:168:PRO:CB	1:B:301:SER:HB3	2.44	0.47
1:A:115:LEU:HD11	1:A:122:PRO:HB3	1.97	0.46
1:D:83:GLN:NE2	1:D:178:GLU:HG2	2.30	0.46
1:C:114:VAL:O	1:C:125:VAL:HA	2.16	0.46
1:D:58:LEU:HD22	1:D:82:MET:HE3	1.98	0.46
1:D:167:LEU:HD12	1:D:193:ALA:HA	1.96	0.46
1:C:113:SER:O	1:C:149:GLY:HA2	2.16	0.46
1:B:207:TRP:CZ3	1:B:287:LEU:HA	2.50	0.46
1:B:50:LEU:HD13	1:B:190:THR:HG22	1.98	0.46
1:B:95:ASN:HB3	1:B:98:THR:OG1	2.16	0.46
1:C:224:THR:OG1	1:C:225:THR:N	2.48	0.45
1:A:227:LEU:HD12	1:A:227:LEU:HA	1.73	0.45
1:B:113:SER:O	1:B:149:GLY:HA2	2.17	0.45
1:B:218:TRP:CE2	1:B:279:ARG:HD2	2.51	0.45
1:B:285:ALA:HB3	1:D:285:ALA:HB3	1.98	0.45
1:C:227:LEU:HD11	1:C:242:LEU:O	2.17	0.45
1:D:106:ILE:HD12	1:D:106:ILE:HA	1.82	0.45
1:B:17:MET:HG3	1:B:117:CYS:SG	2.57	0.45
1:A:40:ARG:O	1:A:43:ILE:HG12	2.17	0.44
1:B:233:VAL:HG11	1:B:269:LYS:HG3	1.99	0.44
1:B:249:ILE:HG22	1:B:293:PRO:HG2	2.00	0.44
1:A:137:LYS:HE2	3:A:423:HOH:O	2.18	0.44
1:B:50:LEU:HD12	1:B:51:ASN:N	2.32	0.44
1:D:129:ALA:CB	1:D:290:GLU:HG2	2.48	0.44
1:D:106:ILE:HG13	1:D:110:GLN:HB2	1.99	0.44
1:B:114:VAL:O	1:B:125:VAL:HA	2.18	0.44
1:B:271:LEU:HD23	1:B:271:LEU:HA	1.83	0.44
1:B:282:LEU:HA	1:B:282:LEU:HD23	1.77	0.44
1:C:228:ASN:HB2	3:C:425:HOH:O	2.17	0.44
1:C:140:PHE:HB3	1:C:144:SER:OG	2.18	0.44
1:A:222:ARG:NE	1:A:222:ARG:HA	2.33	0.43
1:C:31:TRP:CE2	1:C:95:ASN:HB2	2.54	0.43
1:A:78:ILE:HG13	1:A:90:LYS:HD3	1.99	0.43

*Continued on next page...*

*Continued from previous page...*

Atom-1	Atom-2	Interatomic distance (Å)	Clash overlap (Å)
1:B:5:LYS:HG2	1:B:127:GLN:HB2	2.00	0.43
1:A:5:LYS:HG2	1:A:127:GLN:HB3	2.00	0.42
1:D:40:ARG:HD3	1:D:85:CYS:HA	2.01	0.42
1:D:276:MET:O	1:D:277:ASN:HB3	2.19	0.42
1:A:31:TRP:CD2	1:A:95:ASN:HB2	2.55	0.42
1:C:2:GLY:N	1:C:214:ASN:HD21	1.99	0.42
1:C:207:TRP:CH2	1:C:281:ILE:HB	2.54	0.42
1:B:218:TRP:CD2	1:B:279:ARG:HD2	2.55	0.42
1:D:239:TYR:CZ	1:D:272:LEU:HD21	2.54	0.42
1:A:236:LYS:HE2	1:A:236:LYS:HB2	1.86	0.42
1:A:207:TRP:CE2	1:A:288:GLU:HB3	2.55	0.42
1:B:152:ILE:HG12	1:B:157:VAL:HG22	2.00	0.42
1:C:199:THR:HG21	1:C:239:TYR:CZ	2.55	0.42
1:D:59:ILE:HD13	1:D:59:ILE:HA	1.98	0.42
1:D:166:GLU:HG3	1:D:172:HIS:CD2	2.55	0.41
1:B:66:PHE:CE2	1:B:87:LEU:HD21	2.55	0.41
1:A:253:LEU:HD23	1:A:253:LEU:HA	1.91	0.41
1:B:187:ASP:OD1	1:B:187:ASP:N	2.46	0.41
1:A:223:PHE:O	1:A:263:ASP:HA	2.21	0.41
1:B:131:ARG:HD3	1:B:137:LYS:HD2	2.02	0.41
1:C:31:TRP:CD2	1:C:95:ASN:HB2	2.56	0.41
1:D:27:LEU:HD11	1:D:42:VAL:HB	2.03	0.41
1:A:87:LEU:HD12	1:A:87:LEU:HA	1.94	0.41
1:C:259:ILE:HD12	1:C:259:ILE:N	2.36	0.41
1:D:102:LYS:HE3	1:D:102:LYS:HB2	1.75	0.41
1:A:106:ILE:HD12	1:A:130:MET:HB2	2.03	0.41
1:B:56:ASP:O	1:B:60:ARG:HG2	2.20	0.41
1:C:115:LEU:HD11	1:C:122:PRO:HB3	2.03	0.41
1:D:115:LEU:HD11	1:D:122:PRO:HB3	2.03	0.41
1:B:45:THR:HG23	1:B:47:GLU:H	1.87	0.40
1:A:106:ILE:CD1	1:A:130:MET:HB2	2.52	0.40
1:B:27:LEU:HD11	1:B:42:VAL:HB	2.03	0.40
1:B:40:ARG:O	1:B:43:ILE:HG12	2.21	0.40
1:B:140:PHE:HD2	1:B:172:HIS:CG	2.39	0.40
1:A:207:TRP:CH2	1:A:281:ILE:HB	2.57	0.40
1:C:1:SER:HB3	1:C:214:ASN:ND2	2.36	0.40
1:C:90:LYS:HB3	1:C:90:LYS:HE2	1.86	0.40
1:D:169:THR:HB	1:D:171:VAL:HG22	2.03	0.40

There are no symmetry-related clashes.

## 5.3 Torsion angles

### 5.3.1 Protein backbone

In the following table, the Percentiles column shows the percent Ramachandran outliers of the chain as a percentile score with respect to all X-ray entries followed by that with respect to entries of similar resolution.

The Analysed column shows the number of residues for which the backbone conformation was analysed, and the total number of residues.

Mol	Chain	Analysed	Favoured	Allowed	Outliers	Percentiles	
1	A	305/306 (100%)	298 (98%)	7 (2%)	0	100	100
1	B	304/306 (99%)	296 (97%)	8 (3%)	0	100	100
1	C	302/306 (99%)	292 (97%)	10 (3%)	0	100	100
1	D	301/306 (98%)	299 (99%)	2 (1%)	0	100	100
All	All	1212/1224 (99%)	1185 (98%)	27 (2%)	0	100	100

There are no Ramachandran outliers to report.

### 5.3.2 Protein sidechains

In the following table, the Percentiles column shows the percent sidechain outliers of the chain as a percentile score with respect to all X-ray entries followed by that with respect to entries of similar resolution.

The Analysed column shows the number of residues for which the sidechain conformation was analysed, and the total number of residues.

Mol	Chain	Analysed	Rotameric	Outliers	Percentiles	
1	A	262/262 (100%)	258 (98%)	4 (2%)	65	80
1	B	262/262 (100%)	252 (96%)	10 (4%)	33	51
1	C	257/262 (98%)	251 (98%)	6 (2%)	50	70
1	D	255/262 (97%)	245 (96%)	10 (4%)	32	50
All	All	1036/1048 (99%)	1006 (97%)	30 (3%)	42	62

All (30) residues with a non-rotameric sidechain are listed below:

Mol	Chain	Res	Type
1	A	5	LYS
1	A	27	LEU

*Continued on next page...*

*Continued from previous page...*

Mol	Chain	Res	Type
1	A	216	ASP
1	A	236	LYS
1	B	22	CYS
1	B	27	LEU
1	B	48	ASP
1	B	50	LEU
1	B	60	ARG
1	B	74	GLN
1	B	102	LYS
1	B	121	SER
1	B	196	THR
1	B	280	THR
1	C	142	ASN
1	C	216	ASP
1	C	223	PHE
1	C	228	ASN
1	C	269	LYS
1	C	298	ARG
1	D	1	SER
1	D	48	ASP
1	D	155	ASP
1	D	167	LEU
1	D	188	ARG
1	D	217	ARG
1	D	223	PHE
1	D	235	MET
1	D	238	ASN
1	D	298	ARG

Sometimes sidechains can be flipped to improve hydrogen bonding and reduce clashes. All (14) such sidechains are listed below:

Mol	Chain	Res	Type
1	A	41	HIS
1	A	256	GLN
1	B	83	GLN
1	B	142	ASN
1	C	64	HIS
1	C	127	GLN
1	C	142	ASN
1	C	189	GLN
1	C	214	ASN
1	C	221	ASN

*Continued on next page...*

*Continued from previous page...*

Mol	Chain	Res	Type
1	C	274	ASN
1	D	189	GLN
1	D	238	ASN
1	D	274	ASN

### 5.3.3 RNA [i](#)

There are no RNA molecules in this entry.

### 5.4 Non-standard residues in protein, DNA, RNA chains [i](#)

There are no non-standard protein/DNA/RNA residues in this entry.

### 5.5 Carbohydrates [i](#)

There are no monosaccharides in this entry.

### 5.6 Ligand geometry [i](#)

1 ligand is modelled in this entry.

In the following table, the Counts columns list the number of bonds (or angles) for which Mogul statistics could be retrieved, the number of bonds (or angles) that are observed in the model and the number of bonds (or angles) that are defined in the Chemical Component Dictionary. The Link column lists molecule types, if any, to which the group is linked. The Z score for a bond length (or angle) is the number of standard deviations the observed value is removed from the expected value. A bond length (or angle) with  $|Z| > 2$  is considered an outlier worth inspection. RMSZ is the root-mean-square of all Z scores of the bond lengths (or angles).

Mol	Type	Chain	Res	Link	Bond lengths			Bond angles		
					Counts	RMSZ	$\# Z  > 2$	Counts	RMSZ	$\# Z  > 2$
2	1PE	B	401	-	9,9,15	0.26	0	8,8,14	0.42	0

In the following table, the Chirals column lists the number of chiral outliers, the number of chiral centers analysed, the number of these observed in the model and the number defined in the Chemical Component Dictionary. Similar counts are reported in the Torsion and Rings columns. '-' means no outliers of that kind were identified.

Mol	Type	Chain	Res	Link	Chirals	Torsions	Rings
2	1PE	B	401	-	-	3/7/7/13	-

There are no bond length outliers.

There are no bond angle outliers.

There are no chirality outliers.

All (3) torsion outliers are listed below:

Mol	Chain	Res	Type	Atoms
2	B	401	1PE	OH6-C15-C25-OH5
2	B	401	1PE	OH5-C14-C24-OH4
2	B	401	1PE	C24-C14-OH5-C25

There are no ring outliers.

No monomer is involved in short contacts.

## 5.7 Other polymers [i](#)

There are no such residues in this entry.

## 5.8 Polymer linkage issues [i](#)

There are no chain breaks in this entry.

## 6 Fit of model and data [i](#)

### 6.1 Protein, DNA and RNA chains [i](#)

In the following table, the column labelled ‘#RSRZ> 2’ contains the number (and percentage) of RSRZ outliers, followed by percent RSRZ outliers for the chain as percentile scores relative to all X-ray entries and entries of similar resolution. The OWAB column contains the minimum, median, 95<sup>th</sup> percentile and maximum values of the occupancy-weighted average B-factor per residue. The column labelled ‘Q< 0.9’ lists the number of (and percentage) of residues with an average occupancy less than 0.9.

Mol	Chain	Analysed	<RSRZ>	#RSRZ>2	OWAB(Å <sup>2</sup> )	Q<0.9
1	A	306/306 (100%)	-0.51	0 100 100	31, 46, 70, 79	0
1	B	306/306 (100%)	-0.58	1 (0%) 94 93	36, 47, 65, 114	0
1	C	302/306 (98%)	-0.46	1 (0%) 94 93	32, 49, 82, 131	0
1	D	303/306 (99%)	-0.32	4 (1%) 77 75	42, 60, 92, 117	0
All	All	1217/1224 (99%)	-0.47	6 (0%) 91 89	31, 51, 80, 131	0

All (6) RSRZ outliers are listed below:

Mol	Chain	Res	Type	RSRZ
1	C	302	ALA	4.4
1	D	302	ALA	4.3
1	D	46	SER	3.2
1	D	303	VAL	3.1
1	D	301	SER	2.4
1	B	50	LEU	2.1

### 6.2 Non-standard residues in protein, DNA, RNA chains [i](#)

There are no non-standard protein/DNA/RNA residues in this entry.

### 6.3 Carbohydrates [i](#)

There are no monosaccharides in this entry.

### 6.4 Ligands [i](#)

In the following table, the Atoms column lists the number of modelled atoms in the group and the number defined in the chemical component dictionary. The B-factors column lists the minimum,



median, 95<sup>th</sup> percentile and maximum values of B factors of atoms in the group. The column labelled 'Q< 0.9' lists the number of atoms with occupancy less than 0.9.

Mol	Type	Chain	Res	Atoms	RSCC	RSR	B-factors( $\text{\AA}^2$ )	Q<0.9
2	1PE	B	401	10/16	0.92	0.12	49,55,59,61	0

## 6.5 Other polymers [i](#)

There are no such residues in this entry.