



# Full wwPDB X-ray Structure Validation Report ⓘ

Jun 14, 2020 – 10:00 pm BST

PDB ID : 3DSI  
Title : Crystal Structure of Arabidopsis thaliana Allene Oxide Synthase (AOS, cytochrome P450 74A, CYP74A) Complexed with 13(S)-HOT at 1.60 Å resolution  
Authors : Lee, D.S.; Nioche, P.; Raman, C.S.  
Deposited on : 2008-07-12  
Resolution : 1.60 Å(reported)

This is a Full wwPDB X-ray Structure Validation Report for a publicly released PDB entry.

We welcome your comments at [validation@mail.wwpdb.org](mailto:validation@mail.wwpdb.org)

A user guide is available at

<https://www.wwpdb.org/validation/2017/XrayValidationReportHelp>

with specific help available everywhere you see the ⓘ symbol.

---

The following versions of software and data (see [references ⓘ](#)) were used in the production of this report:

MolProbity : 4.02b-467  
Mogul : 1.8.5 (274361), CSD as541be (2020)  
Xtriage (Phenix) : 1.13  
EDS : 2.11  
buster-report : 1.1.7 (2018)  
Percentile statistics : 20191225.v01 (using entries in the PDB archive December 25th 2019)  
Refmac : 5.8.0158  
CCP4 : 7.0.044 (Gargrove)  
Ideal geometry (proteins) : Engh & Huber (2001)  
Ideal geometry (DNA, RNA) : Parkinson et al. (1996)  
Validation Pipeline (wwPDB-VP) : 2.11

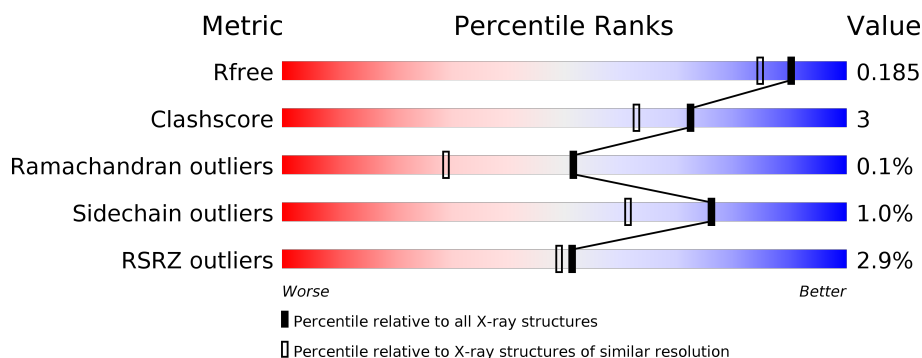
# 1 Overall quality at a glance

The following experimental techniques were used to determine the structure:

## *X-RAY DIFFRACTION*

The reported resolution of this entry is 1.60 Å.

Percentile scores (ranging between 0-100) for global validation metrics of the entry are shown in the following graphic. The table shows the number of entries on which the scores are based.



Metric	Whole archive (#Entries)	Similar resolution (#Entries, resolution range(Å))
$R_{free}$	130704	3398 (1.60-1.60)
Clashscore	141614	3665 (1.60-1.60)
Ramachandran outliers	138981	3564 (1.60-1.60)
Sidechain outliers	138945	3563 (1.60-1.60)
RSRZ outliers	127900	3321 (1.60-1.60)

The table below summarises the geometric issues observed across the polymeric chains and their fit to the electron density. The red, orange, yellow and green segments on the lower bar indicate the fraction of residues that contain outliers for  $\geq 3$ , 2, 1 and 0 types of geometric quality criteria respectively. A grey segment represents the fraction of residues that are not modelled. The numeric value for each fraction is indicated below the corresponding segment, with a dot representing fractions  $\leq 5\%$ . The upper red bar (where present) indicates the fraction of residues that have poor fit to the electron density. The numeric value is given above the bar.

Mol	Chain	Length	Quality of chain
1	A	495	<div> <div>2%</div> <div> <div></div> <div>88%</div> <div>6%</div> <div>6%</div> </div> </div>
1	B	495	<div> <div>3%</div> <div> <div></div> <div>86%</div> <div>7%</div> <div>6%</div> </div> </div>

## 2 Entry composition

There are 6 unique types of molecules in this entry. The entry contains 8575 atoms, of which 0 are hydrogens and 0 are deuteriums.

In the tables below, the ZeroOcc column contains the number of atoms modelled with zero occupancy, the AltConf column contains the number of residues with at least one atom in alternate conformation and the Trace column contains the number of residues modelled with at most 2 atoms.

- Molecule 1 is a protein called Cytochrome P450 74A, chloroplast.

Mol	Chain	Residues	Atoms					ZeroOcc	AltConf	Trace
1	A	466	Total	C	N	O	S	0	14	0
			3829	2465	644	710	10			
1	B	465	Total	C	N	O	S	0	12	0
			3798	2452	637	699	10			

There are 20 discrepancies between the modelled and reference sequences:

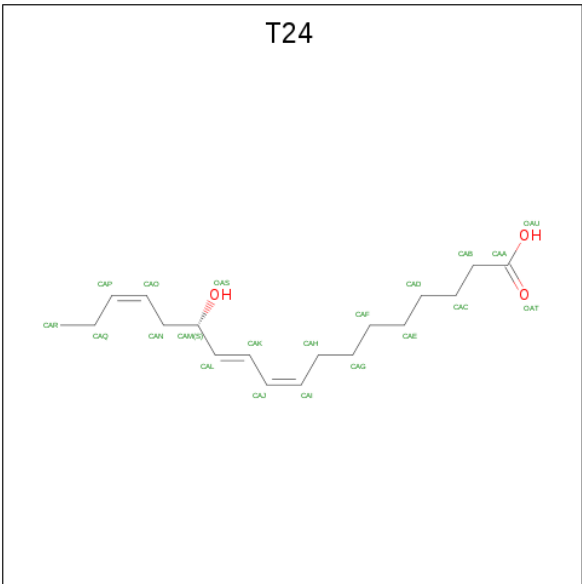
Chain	Residue	Modelled	Actual	Comment	Reference
A	28	MET	-	EXPRESSION TAG	UNP Q96242
A	29	ALA	-	EXPRESSION TAG	UNP Q96242
A	30	LYS	-	EXPRESSION TAG	UNP Q96242
A	31	LYS	-	EXPRESSION TAG	UNP Q96242
A	32	THR	-	EXPRESSION TAG	UNP Q96242
A	33	SER	-	EXPRESSION TAG	UNP Q96242
A	519	HIS	-	EXPRESSION TAG	UNP Q96242
A	520	HIS	-	EXPRESSION TAG	UNP Q96242
A	521	HIS	-	EXPRESSION TAG	UNP Q96242
A	522	HIS	-	EXPRESSION TAG	UNP Q96242
B	28	MET	-	EXPRESSION TAG	UNP Q96242
B	29	ALA	-	EXPRESSION TAG	UNP Q96242
B	30	LYS	-	EXPRESSION TAG	UNP Q96242
B	31	LYS	-	EXPRESSION TAG	UNP Q96242
B	32	THR	-	EXPRESSION TAG	UNP Q96242
B	33	SER	-	EXPRESSION TAG	UNP Q96242
B	519	HIS	-	EXPRESSION TAG	UNP Q96242
B	520	HIS	-	EXPRESSION TAG	UNP Q96242
B	521	HIS	-	EXPRESSION TAG	UNP Q96242
B	522	HIS	-	EXPRESSION TAG	UNP Q96242

- Molecule 2 is PROTOPORPHYRIN IX CONTAINING FE (three-letter code: HEM) (formula:  $C_{34}H_{32}FeN_4O_4$ ).



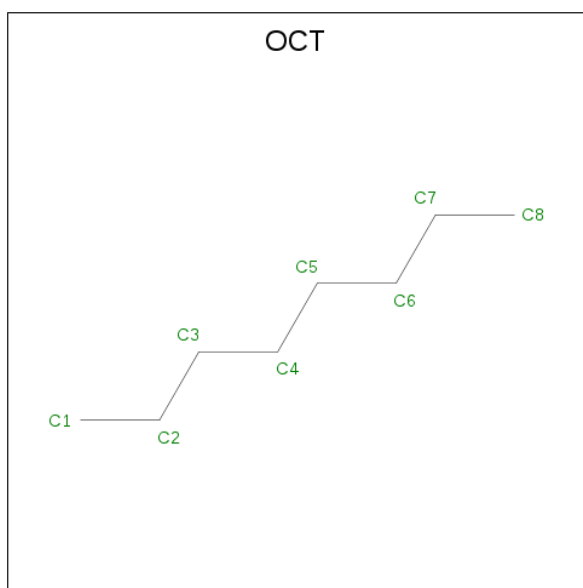
Mol	Chain	Residues	Atoms					ZeroOcc	AltConf
2	A	1	Total	C	Fe	N	O	0	0
			43	34	1	4	4		
2	B	1	Total	C	Fe	N	O	0	0
			43	34	1	4	4		

- Molecule 3 is (9Z,11E,13S,15Z)-13-hydroxyoctadeca-9,11,15-trienoic acid (three-letter code: T24) (formula: C<sub>18</sub>H<sub>30</sub>O<sub>3</sub>).



Mol	Chain	Residues	Atoms			ZeroOcc	AltConf
3	A	1	Total	C	O	0	0
			21	18	3		

- Molecule 4 is N-OCTANE (three-letter code: OCT) (formula:  $C_8H_{18}$ ).



Mol	Chain	Residues	Atoms		ZeroOcc	AltConf
4	A	1	Total	C	0	0
			8	8		
4	B	1	Total	C	0	0
			8	8		

- Molecule 5 is GLYCEROL (three-letter code: GOL) (formula:  $C_3H_8O_3$ ).



Mol	Chain	Residues	Atoms			ZeroOcc	AltConf
5	A	1	Total	C	O	0	0
			6	3	3		

*Continued on next page...*

*Continued from previous page...*

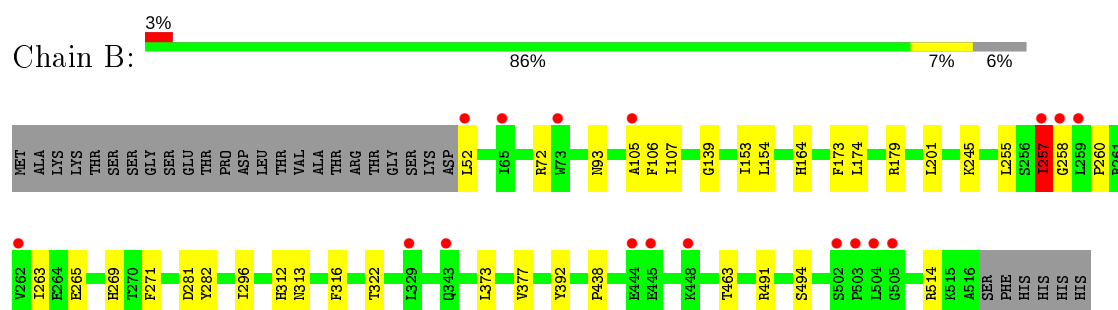
Mol	Chain	Residues	Atoms			ZeroOcc	AltConf
5	A	1	Total	C	O	0	0
			6	3	3		
5	B	1	Total	C	O	0	0
			6	3	3		

- Molecule 6 is water.

Mol	Chain	Residues	Atoms		ZeroOcc	AltConf
6	A	417	Total	O	0	0
			417	417		
6	B	390	Total	O	0	0
			390	390		



- Molecule 1: Cytochrome P450 74A, chloroplast



## 4 Data and refinement statistics

Property	Value	Source
Space group	P 21 21 21	Depositor
Cell constants a, b, c, $\alpha$ , $\beta$ , $\gamma$	63.41Å 104.85Å 162.42Å 90.00° 90.00° 90.00°	Depositor
Resolution (Å)	88.04 – 1.60 32.38 – 1.59	Depositor EDS
% Data completeness (in resolution range)	99.3 (88.04-1.60) 99.3 (32.38-1.59)	Depositor EDS
$R_{merge}$	(Not available)	Depositor
$R_{sym}$	(Not available)	Depositor
$\langle I/\sigma(I) \rangle$ <sup>1</sup>	2.59 (at 1.59Å)	Xtriage
Refinement program	REFMAC 5.2.0019	Depositor
R, $R_{free}$	0.167 , 0.185 0.166 , 0.185	Depositor DCC
$R_{free}$ test set	7200 reflections (5.01%)	wwPDB-VP
Wilson B-factor (Å <sup>2</sup> )	18.9	Xtriage
Anisotropy	0.286	Xtriage
Bulk solvent $k_{sol}$ (e/Å <sup>3</sup> ), $B_{sol}$ (Å <sup>2</sup> )	0.39 , 49.8	EDS
L-test for twinning <sup>2</sup>	$\langle  L  \rangle = 0.50$ , $\langle L^2 \rangle = 0.33$	Xtriage
Estimated twinning fraction	No twinning to report.	Xtriage
$F_o, F_c$ correlation	0.97	EDS
Total number of atoms	8575	wwPDB-VP
Average B, all atoms (Å <sup>2</sup> )	20.0	wwPDB-VP

Xtriage's analysis on translational NCS is as follows: *The largest off-origin peak in the Patterson function is 3.37% of the height of the origin peak. No significant pseudotranslation is detected.*

<sup>1</sup>Intensities estimated from amplitudes.

<sup>2</sup>Theoretical values of  $\langle |L| \rangle$ ,  $\langle L^2 \rangle$  for acentric reflections are 0.5, 0.333 respectively for untwinned datasets, and 0.375, 0.2 for perfectly twinned datasets.



## 5 Model quality

### 5.1 Standard geometry

Bond lengths and bond angles in the following residue types are not validated in this section: GOL, OCT, HEM, T24

The Z score for a bond length (or angle) is the number of standard deviations the observed value is removed from the expected value. A bond length (or angle) with  $|Z| > 5$  is considered an outlier worth inspection. RMSZ is the root-mean-square of all Z scores of the bond lengths (or angles).

Mol	Chain	Bond lengths		Bond angles	
		RMSZ	# Z  >5	RMSZ	# Z  >5
1	A	0.48	0/3922	0.59	0/5302
1	B	0.46	0/3891	0.58	0/5262
All	All	0.47	0/7813	0.58	0/10564

There are no bond length outliers.

There are no bond angle outliers.

There are no chirality outliers.

There are no planarity outliers.

### 5.2 Too-close contacts

In the following table, the Non-H and H(model) columns list the number of non-hydrogen atoms and hydrogen atoms in the chain respectively. The H(added) column lists the number of hydrogen atoms added and optimized by MolProbity. The Clashes column lists the number of clashes within the asymmetric unit, whereas Symm-Clashes lists symmetry related clashes.

Mol	Chain	Non-H	H(model)	H(added)	Clashes	Symm-Clashes
1	A	3829	0	3802	21	0
1	B	3798	0	3791	29	0
2	A	43	0	30	3	0
2	B	43	0	30	4	0
3	A	21	0	29	1	0
4	A	8	0	18	0	0
4	B	8	0	18	0	0
5	A	12	0	16	0	0
5	B	6	0	8	0	0
6	A	417	0	0	10	0
6	B	390	0	0	7	0
All	All	8575	0	7742	53	0

The all-atom clashscore is defined as the number of clashes found per 1000 atoms (including hydrogen atoms). The all-atom clashscore for this structure is 3.

All (53) close contacts within the same asymmetric unit are listed below, sorted by their clash magnitude.

Atom-1	Atom-2	Interatomic distance (Å)	Clash overlap (Å)
3:A:601:T24:OAU	6:A:925:HOH:O	1.67	1.11
1:B:271:PHE:HA	6:B:635:HOH:O	1.69	0.93
1:B:72:ARG:HH22	1:B:105:ALA:HB2	1.33	0.93
1:A:388:VAL:HA	6:A:925:HOH:O	1.74	0.88
1:B:93[B]:ASN:ND2	6:B:757:HOH:O	2.10	0.82
1:B:72:ARG:NH2	1:B:105:ALA:HB2	1.98	0.78
1:B:107:ILE:HG23	6:B:686:HOH:O	1.82	0.78
1:A:72:ARG:HH12	1:A:105:ALA:HB2	1.57	0.69
1:A:387:PRO:O	6:A:925:HOH:O	2.11	0.68
1:B:255:LEU:O	1:B:269:HIS:HE1	1.77	0.67
1:B:282:TYR:OH	1:B:312:HIS:HD2	1.77	0.67
1:A:65:ILE:O	1:A:69:ILE:HG12	1.97	0.65
1:B:154:LEU:H	1:B:313:ASN:HD21	1.45	0.64
1:B:164:HIS:HE1	2:B:600:HEM:O2D	1.81	0.64
1:B:105:ALA:HB3	6:B:932:HOH:O	1.98	0.63
1:A:491:ARG:HD2	6:A:829:HOH:O	1.98	0.62
1:B:173:PHE:HD2	1:B:296[A]:ILE:HD12	1.69	0.57
1:B:260:PRO:HD2	1:B:263:ILE:HD12	1.88	0.56
2:B:600:HEM:HBC2	2:B:600:HEM:HHD	1.89	0.54
1:B:154:LEU:H	1:B:313:ASN:ND2	2.08	0.52
1:A:199:LYS:HE2	6:A:699:HOH:O	2.09	0.52
1:A:149:GLY:HA3	1:A:312:HIS:CE1	2.45	0.52
1:B:164:HIS:HD2	6:B:652:HOH:O	1.94	0.51
1:A:171:LEU:HB3	2:A:600:HEM:HBC1	1.93	0.50
1:B:174:LEU:HD13	1:B:296[B]:ILE:HG13	1.94	0.50
1:A:472:ALA:HB3	2:A:600:HEM:HBC2	1.93	0.49
1:B:257:ILE:HG22	1:B:258:GLY:H	1.77	0.49
1:A:505:GLY:HA3	6:A:683:HOH:O	2.13	0.48
1:B:322:THR:HG23	2:B:600:HEM:HMC1	1.95	0.47
1:B:494:SER:OG	1:B:514:ARG:HD2	2.14	0.47
1:B:377[A]:VAL:HG12	1:B:438:PRO:HB3	1.96	0.46
1:A:128:VAL:HG13	6:A:764:HOH:O	2.16	0.46
1:A:259:LEU:HB2	1:A:264:GLU:HG3	1.98	0.45
1:A:487:GLU:HG2	6:A:957:HOH:O	2.15	0.45
1:A:257[B]:ILE:HG13	1:A:259:LEU:HD23	1.97	0.44
2:B:600:HEM:CHD	2:B:600:HEM:HBC2	2.48	0.44
1:A:59:GLY:HA2	1:A:92:TYR:CZ	2.52	0.44

*Continued on next page...*

Continued from previous page...

Atom-1	Atom-2	Interatomic distance (Å)	Clash overlap (Å)
1:B:173:PHE:HD2	1:B:296[A]:ILE:CD1	2.31	0.43
1:B:139:GLY:HA2	1:B:392:TYR:CD2	2.54	0.42
1:B:153:ILE:HG21	1:B:316:PHE:CG	2.54	0.42
1:B:173:PHE:CD2	1:B:296[A]:ILE:HD12	2.52	0.42
1:A:491:ARG:HG3	6:A:852:HOH:O	2.19	0.42
1:A:322:THR:HG23	2:A:600:HEM:HMC1	2.02	0.42
1:B:265:GLU:OE2	1:B:269:HIS:HD2	2.02	0.42
1:B:491:ARG:HD2	6:B:769:HOH:O	2.20	0.41
1:B:373:LEU:O	1:B:377[A]:VAL:HG13	2.21	0.41
1:A:139:GLY:HA2	1:A:392:TYR:CD2	2.55	0.40
1:A:153:ILE:HG21	1:A:316:PHE:CG	2.57	0.40
1:B:106:PHE:HB2	6:B:635:HOH:O	2.21	0.40
1:B:255:LEU:O	1:B:269:HIS:CE1	2.67	0.40
1:B:245:LYS:HD3	1:B:281:ASP:OD2	2.22	0.40
1:A:252:HIS:CG	1:A:253:PRO:HD3	2.57	0.40
1:A:283:GLN:NE2	6:A:991:HOH:O	2.49	0.40

There are no symmetry-related clashes.

## 5.3 Torsion angles ⓘ

### 5.3.1 Protein backbone ⓘ

In the following table, the Percentiles column shows the percent Ramachandran outliers of the chain as a percentile score with respect to all X-ray entries followed by that with respect to entries of similar resolution.

The Analysed column shows the number of residues for which the backbone conformation was analysed, and the total number of residues.

Mol	Chain	Analysed	Favoured	Allowed	Outliers	Percentiles	
1	A	478/495 (97%)	469 (98%)	9 (2%)	0	100	100
1	B	475/495 (96%)	467 (98%)	7 (2%)	1 (0%)	47	26
All	All	953/990 (96%)	936 (98%)	16 (2%)	1 (0%)	51	29

All (1) Ramachandran outliers are listed below:

Mol	Chain	Res	Type
1	B	257	ILE

### 5.3.2 Protein sidechains ⓘ

In the following table, the Percentiles column shows the percent sidechain outliers of the chain as a percentile score with respect to all X-ray entries followed by that with respect to entries of similar resolution.

The Analysed column shows the number of residues for which the sidechain conformation was analysed, and the total number of residues.

Mol	Chain	Analysed	Rotameric	Outliers	Percentiles	
1	A	415/426 (97%)	412 (99%)	3 (1%)	84	73
1	B	412/426 (97%)	407 (99%)	5 (1%)	71	54
All	All	827/852 (97%)	819 (99%)	8 (1%)	76	61

All (8) residues with a non-rotameric sidechain are listed below:

Mol	Chain	Res	Type
1	A	128	VAL
1	A	201	LEU
1	A	359	ASN
1	B	52	LEU
1	B	179	ARG
1	B	201	LEU
1	B	257	ILE
1	B	463	THR

Some sidechains can be flipped to improve hydrogen bonding and reduce clashes. All (13) such sidechains are listed below:

Mol	Chain	Res	Type
1	A	56	ASN
1	A	100	ASN
1	A	169	ASN
1	A	180	ASN
1	A	332	ASN
1	A	359	ASN
1	A	452	HIS
1	B	100	ASN
1	B	164	HIS
1	B	269	HIS
1	B	312	HIS
1	B	313	ASN
1	B	332	ASN

### 5.3.3 RNA ⓘ

There are no RNA molecules in this entry.

## 5.4 Non-standard residues in protein, DNA, RNA chains ⓘ

There are no non-standard protein/DNA/RNA residues in this entry.

## 5.5 Carbohydrates ⓘ

There are no carbohydrates in this entry.

## 5.6 Ligand geometry ⓘ

8 ligands are modelled in this entry.

In the following table, the Counts columns list the number of bonds (or angles) for which Mogul statistics could be retrieved, the number of bonds (or angles) that are observed in the model and the number of bonds (or angles) that are defined in the Chemical Component Dictionary. The Link column lists molecule types, if any, to which the group is linked. The Z score for a bond length (or angle) is the number of standard deviations the observed value is removed from the expected value. A bond length (or angle) with  $|Z| > 2$  is considered an outlier worth inspection. RMSZ is the root-mean-square of all Z scores of the bond lengths (or angles).

Mol	Type	Chain	Res	Link	Bond lengths			Bond angles		
					Counts	RMSZ	# $ Z  > 2$	Counts	RMSZ	# $ Z  > 2$
5	GOL	A	602	-	5,5,5	0.33	0	5,5,5	0.34	0
4	OCT	B	5	-	7,7,7	0.26	0	6,6,6	0.56	0
5	GOL	B	1	-	5,5,5	0.29	0	5,5,5	0.31	0
3	T24	A	601	-	16,20,20	1.48	3 (18%)	15,21,21	0.74	0
4	OCT	A	2	-	7,7,7	0.23	0	6,6,6	0.50	0
2	HEM	B	600	1	27,50,50	2.04	6 (22%)	17,82,82	1.60	3 (17%)
2	HEM	A	600	1	27,50,50	2.05	7 (25%)	17,82,82	1.86	5 (29%)
5	GOL	A	3	-	5,5,5	0.42	0	5,5,5	0.39	0

In the following table, the Chirals column lists the number of chiral outliers, the number of chiral centers analysed, the number of these observed in the model and the number defined in the Chemical Component Dictionary. Similar counts are reported in the Torsion and Rings columns. '-' means no outliers of that kind were identified.

Mol	Type	Chain	Res	Link	Chirals	Torsions	Rings
5	GOL	A	602	-	-	0/4/4/4	-

*Continued on next page...*

*Continued from previous page...*

Mol	Type	Chain	Res	Link	Chirals	Torsions	Rings
4	OCT	B	5	-	-	0/5/5/5	-
5	GOL	B	1	-	-	0/4/4/4	-
3	T24	A	601	-	-	2/17/19/19	-
4	OCT	A	2	-	-	3/5/5/5	-
2	HEM	B	600	1	-	0/6/54/54	-
2	HEM	A	600	1	-	0/6/54/54	-
5	GOL	A	3	-	-	0/4/4/4	-

All (16) bond length outliers are listed below:

Mol	Chain	Res	Type	Atoms	Z	Observed(Å)	Ideal(Å)
2	B	600	HEM	C3C-C2C	-4.87	1.33	1.40
2	B	600	HEM	C3D-C2D	4.35	1.50	1.37
2	A	600	HEM	C3D-C2D	4.27	1.50	1.37
2	A	600	HEM	C3C-C2C	-4.09	1.34	1.40
2	A	600	HEM	C3C-CAC	3.95	1.55	1.47
2	B	600	HEM	C3C-CAC	3.77	1.55	1.47
2	B	600	HEM	C3B-C2B	-3.76	1.35	1.40
2	A	600	HEM	C3B-C2B	-3.66	1.35	1.40
2	B	600	HEM	C3B-CAB	3.34	1.54	1.47
2	A	600	HEM	C3B-CAB	3.30	1.54	1.47
3	A	601	T24	CAN-CAO	-2.74	1.41	1.50
3	A	601	T24	CAQ-CAP	-2.39	1.40	1.51
2	A	600	HEM	CAA-C2A	2.36	1.55	1.52
3	A	601	T24	CAM-CAL	2.26	1.55	1.50
2	A	600	HEM	C1D-ND	2.21	1.40	1.36
2	B	600	HEM	CAA-C2A	2.07	1.55	1.52

All (8) bond angle outliers are listed below:

Mol	Chain	Res	Type	Atoms	Z	Observed(°)	Ideal(°)
2	B	600	HEM	CBD-CAD-C3D	-4.49	104.20	112.48
2	A	600	HEM	CBD-CAD-C3D	-4.21	104.73	112.48
2	A	600	HEM	C4A-C3A-C2A	3.48	109.42	107.00
2	A	600	HEM	CMA-C3A-C4A	-3.42	123.21	128.46
2	B	600	HEM	C4A-C3A-C2A	2.38	108.65	107.00
2	A	600	HEM	CMB-C2B-C3B	2.18	128.75	124.68
2	B	600	HEM	CBA-CAA-C2A	-2.11	108.59	112.49
2	A	600	HEM	CAA-CBA-CGA	-2.02	109.29	112.67

There are no chirality outliers.

All (5) torsion outliers are listed below:

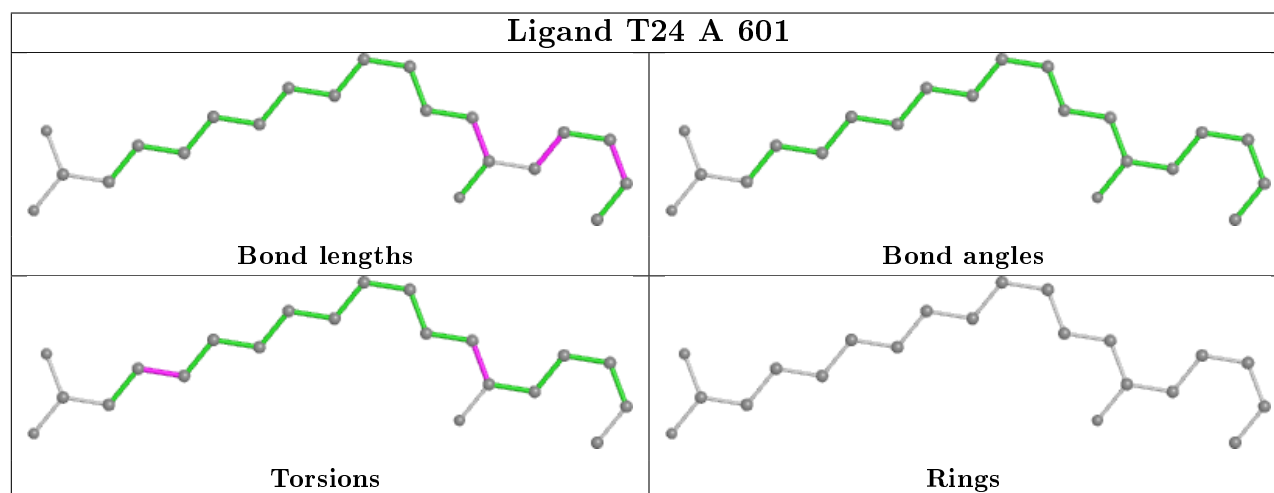
Mol	Chain	Res	Type	Atoms
4	A	2	OCT	C3-C4-C5-C6
3	A	601	T24	CAK-CAL-CAM-CAN
3	A	601	T24	CAB-CAC-CAD-CAE
4	A	2	OCT	C4-C5-C6-C7
4	A	2	OCT	C5-C6-C7-C8

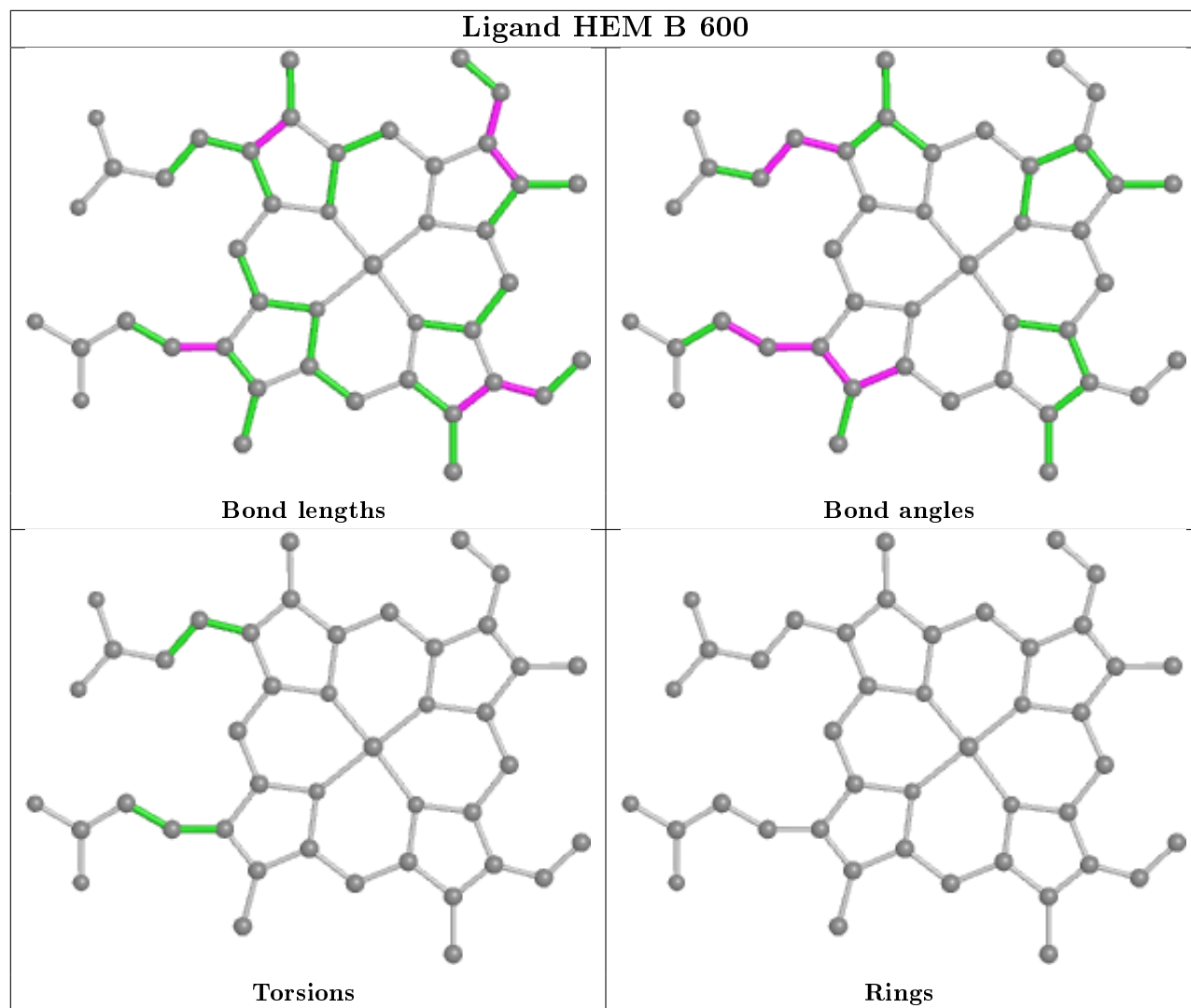
There are no ring outliers.

3 monomers are involved in 8 short contacts:

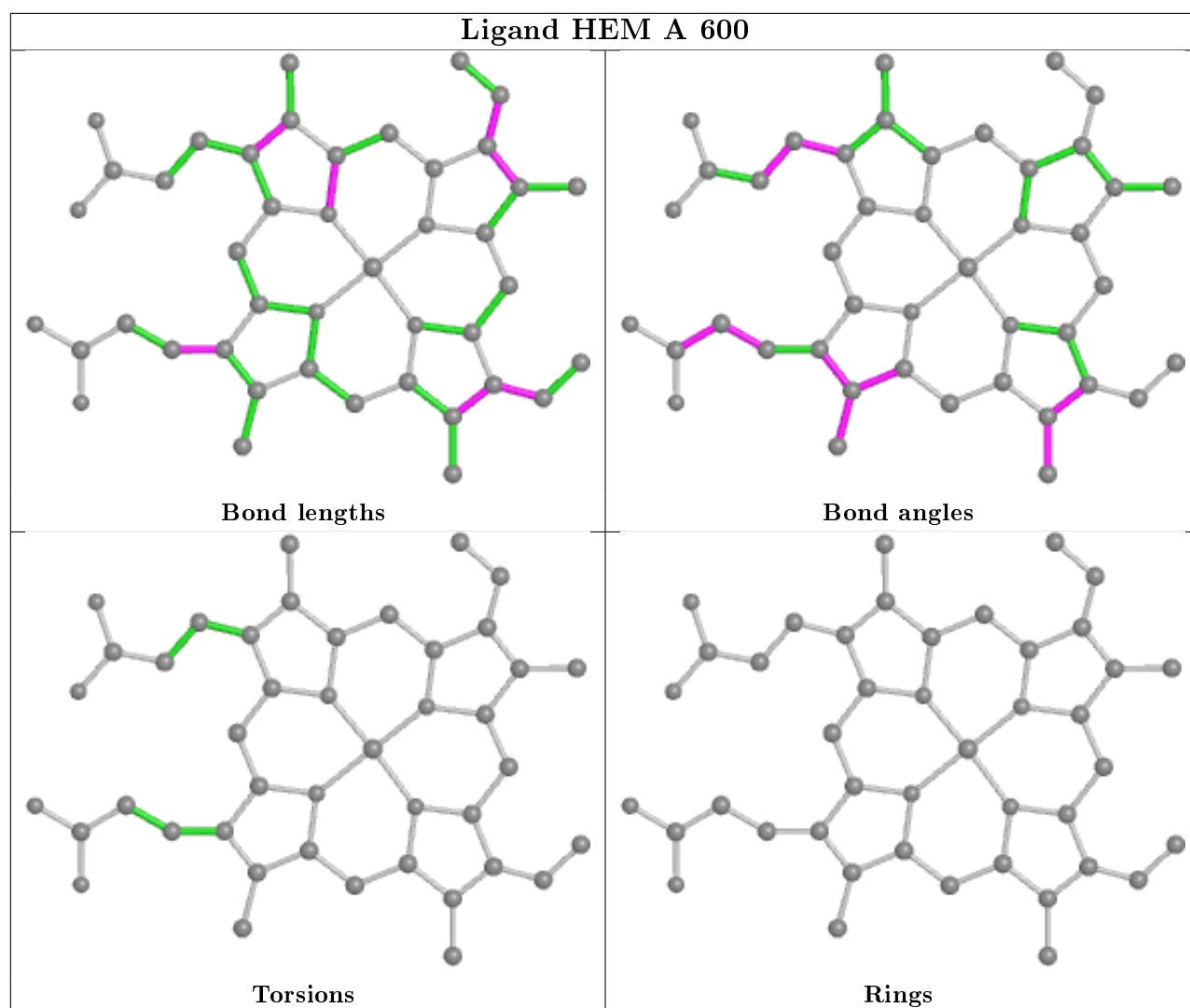
Mol	Chain	Res	Type	Clashes	Symm-Clashes
3	A	601	T24	1	0
2	B	600	HEM	4	0
2	A	600	HEM	3	0

The following is a two-dimensional graphical depiction of Mogul quality analysis of bond lengths, bond angles, torsion angles, and ring geometry for all instances of the Ligand of Interest. In addition, ligands with molecular weight > 250 and outliers as shown on the validation Tables will also be included. For torsion angles, if less than 5% of the Mogul distribution of torsion angles is within 10 degrees of the torsion angle in question, then that torsion angle is considered an outlier. Any bond that is central to one or more torsion angles identified as an outlier by Mogul will be highlighted in the graph. For rings, the root-mean-square deviation (RMSD) between the ring in question and similar rings identified by Mogul is calculated over all ring torsion angles. If the average RMSD is greater than 60 degrees and the minimal RMSD between the ring in question and any Mogul-identified rings is also greater than 60 degrees, then that ring is considered an outlier. The outliers are highlighted in purple. The color gray indicates Mogul did not find sufficient equivalents in the CSD to analyse the geometry.









## 5.7 Other polymers [i](#)

There are no such residues in this entry.

## 5.8 Polymer linkage issues [i](#)

There are no chain breaks in this entry.

## 6 Fit of model and data ⓘ

### 6.1 Protein, DNA and RNA chains ⓘ

In the following table, the column labelled ‘#RSRZ> 2’ contains the number (and percentage) of RSRZ outliers, followed by percent RSRZ outliers for the chain as percentile scores relative to all X-ray entries and entries of similar resolution. The OWAB column contains the minimum, median, 95<sup>th</sup> percentile and maximum values of the occupancy-weighted average B-factor per residue. The column labelled ‘Q< 0.9’ lists the number of (and percentage) of residues with an average occupancy less than 0.9.

Mol	Chain	Analysed	<RSRZ>	#RSRZ>2	OWAB(Å <sup>2</sup> )	Q<0.9
1	A	466/495 (94%)	-0.17	10 (2%) 63 62	14, 18, 27, 36	0
1	B	465/495 (93%)	0.03	17 (3%) 41 39	14, 19, 30, 42	0
All	All	931/990 (94%)	-0.07	27 (2%) 51 49	14, 18, 29, 42	0

All (27) RSRZ outliers are listed below:

Mol	Chain	Res	Type	RSRZ
1	B	258	GLY	10.7
1	B	504	LEU	9.9
1	B	503	PRO	6.1
1	B	259	LEU	5.3
1	B	505	GLY	3.9
1	B	502	SER	3.7
1	A	258	GLY	3.3
1	A	257[A]	ILE	3.1
1	B	262	VAL	2.9
1	B	257	ILE	2.8
1	A	51	ASP	2.8
1	A	259	LEU	2.8
1	A	63	LEU	2.7
1	A	64	PRO	2.7
1	A	516	ALA	2.6
1	B	445	GLU	2.6
1	B	65	ILE	2.6
1	A	236	LYS	2.5
1	B	444	GLU	2.5
1	B	448	LYS	2.4
1	A	65	ILE	2.3
1	B	52	LEU	2.3
1	B	343	GLN	2.2
1	A	444	GLU	2.2

*Continued on next page...*

*Continued from previous page...*

Mol	Chain	Res	Type	RSRZ
1	B	105	ALA	2.1
1	B	329	LEU	2.0
1	B	73	TRP	2.0

## 6.2 Non-standard residues in protein, DNA, RNA chains [i](#)

There are no non-standard protein/DNA/RNA residues in this entry.

## 6.3 Carbohydrates [i](#)

There are no carbohydrates in this entry.

## 6.4 Ligands [i](#)

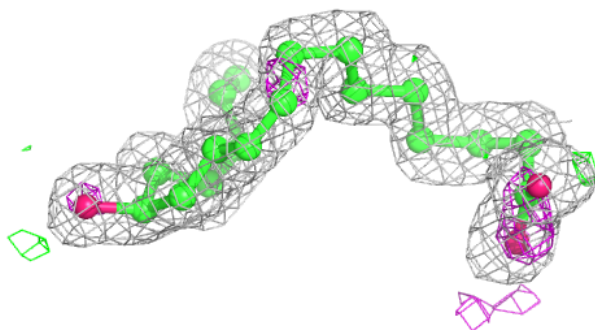
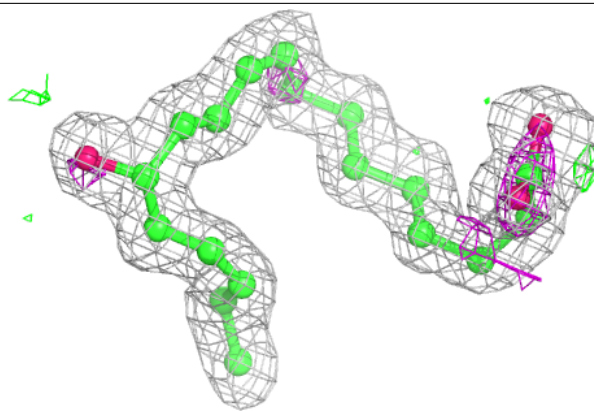
In the following table, the Atoms column lists the number of modelled atoms in the group and the number defined in the chemical component dictionary. The B-factors column lists the minimum, median, 95<sup>th</sup> percentile and maximum values of B factors of atoms in the group. The column labelled 'Q< 0.9' lists the number of atoms with occupancy less than 0.9.

Mol	Type	Chain	Res	Atoms	RSCC	RSR	B-factors(Å <sup>2</sup> )	Q<0.9
4	OCT	A	2	8/8	0.81	0.12	54,54,56,57	0
4	OCT	B	5	8/8	0.86	0.11	45,47,50,51	0
5	GOL	A	602	6/6	0.88	0.20	28,30,32,34	0
5	GOL	A	3	6/6	0.91	0.13	27,31,35,38	0
3	T24	A	601	21/21	0.92	0.11	15,20,25,25	0
5	GOL	B	1	6/6	0.96	0.10	18,20,21,24	0
2	HEM	A	600	43/43	0.98	0.07	12,14,16,23	0
2	HEM	B	600	43/43	0.98	0.07	12,13,16,24	0

The following is a graphical depiction of the model fit to experimental electron density of all instances of the Ligand of Interest. In addition, ligands with molecular weight > 250 and outliers as shown on the geometry validation Tables will also be included. Each fit is shown from different orientation to approximate a three-dimensional view.

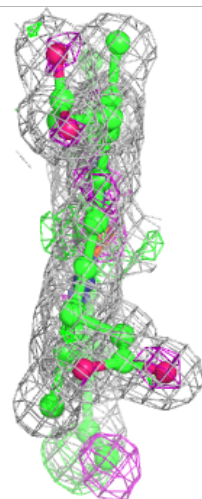
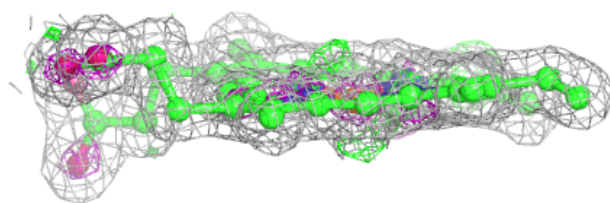
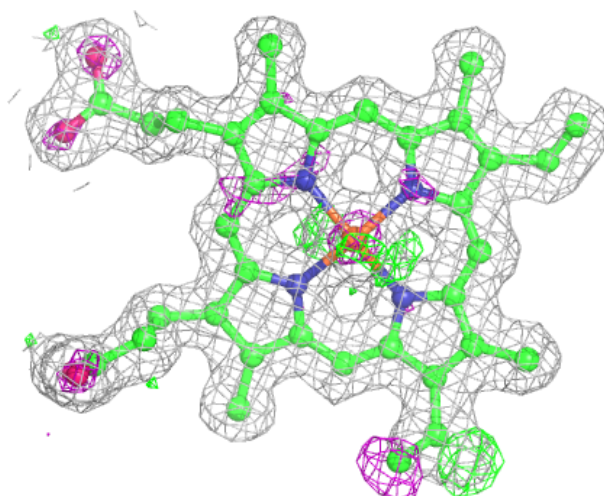
**Electron density around T24 A 601:**

$2mF_o-DF_c$  (at 0.7 rmsd) in gray  
 $mF_o-DF_c$  (at 3 rmsd) in purple (negative)  
and green (positive)



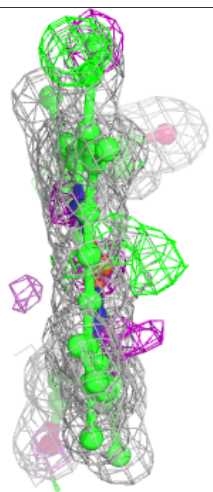
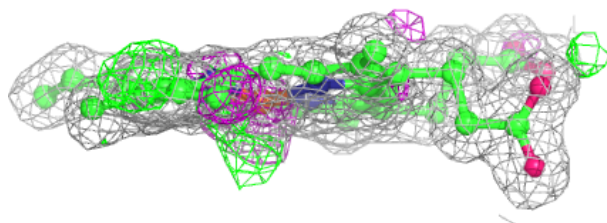
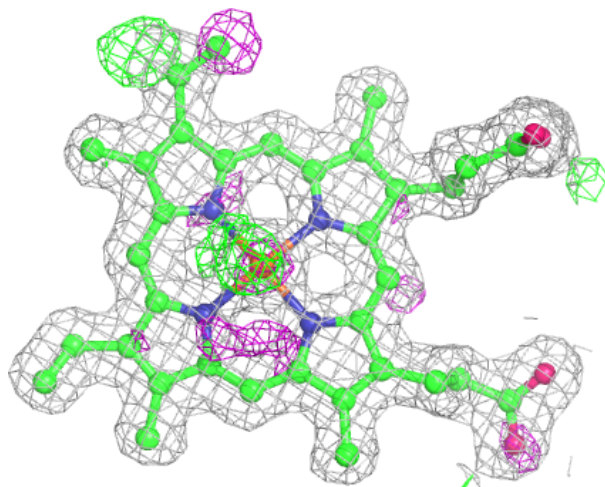
**Electron density around HEM A 600:**

$2mF_o-DF_c$  (at 0.7 rmsd) in gray  
 $mF_o-DF_c$  (at 3 rmsd) in purple (negative)  
and green (positive)



**Electron density around HEM B 600:**

$2mF_o-DF_c$  (at 0.7 rmsd) in gray  
 $mF_o-DF_c$  (at 3 rmsd) in purple (negative)  
and green (positive)



## 6.5 Other polymers [i](#)

There are no such residues in this entry.