



Full wwPDB X-ray Structure Validation Report ⓘ

Oct 10, 2021 – 04:13 PM EDT

PDB ID : 3DSY
Title : E(L212)Q mutant structure of photosynthetic reaction center from Rhodospirillum rubrum
Authors : Pokkuluri, P.R.; Schiffer, M.
Deposited on : 2008-07-14
Resolution : 3.00 Å(reported)

This is a Full wwPDB X-ray Structure Validation Report for a publicly released PDB entry.

We welcome your comments at validation@mail.wwpdb.org

A user guide is available at

<https://www.wwpdb.org/validation/2017/XrayValidationReportHelp>

with specific help available everywhere you see the ⓘ symbol.

The following versions of software and data (see [references ⓘ](#)) were used in the production of this report:

MolProbity : 4.02b-467
Mogul : 1.8.5 (274361), CSD as541be (2020)
Xtriage (Phenix) : 1.13
EDS : 2.23.2
buster-report : 1.1.7 (2018)
Percentile statistics : 20191225.v01 (using entries in the PDB archive December 25th 2019)
Refmac : 5.8.0158
CCP4 : 7.0.044 (Gargrove)
Ideal geometry (proteins) : Engh & Huber (2001)
Ideal geometry (DNA, RNA) : Parkinson et al. (1996)
Validation Pipeline (wwPDB-VP) : 2.23.2

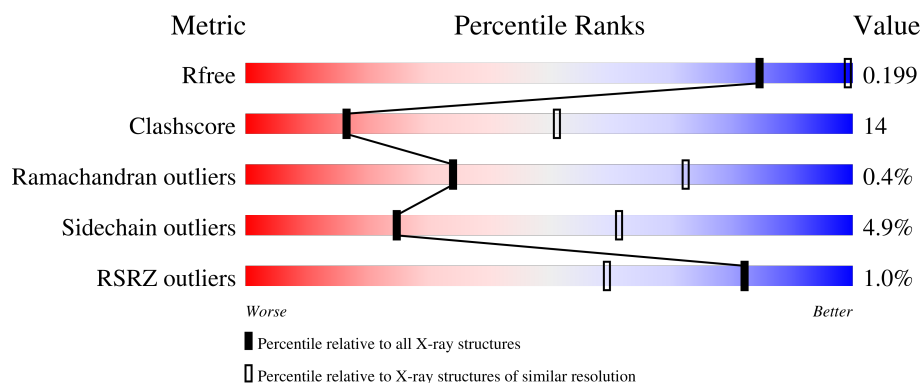
1 Overall quality at a glance

The following experimental techniques were used to determine the structure:

X-RAY DIFFRACTION




The reported resolution of this entry is 3.00 Å.

Percentile scores (ranging between 0-100) for global validation metrics of the entry are shown in the following graphic. The table shows the number of entries on which the scores are based.



Metric	Whole archive (#Entries)	Similar resolution (#Entries, resolution range(Å))
R_{free}	130704	2092 (3.00-3.00)
Clashscore	141614	2416 (3.00-3.00)
Ramachandran outliers	138981	2333 (3.00-3.00)
Sidechain outliers	138945	2336 (3.00-3.00)
RSRZ outliers	127900	1990 (3.00-3.00)

The table below summarises the geometric issues observed across the polymeric chains and their fit to the electron density. The red, orange, yellow and green segments of the lower bar indicate the fraction of residues that contain outliers for ≥ 3 , 2, 1 and 0 types of geometric quality criteria respectively. A grey segment represents the fraction of residues that are not modelled. The numeric value for each fraction is indicated below the corresponding segment, with a dot representing fractions $\leq 5\%$. The upper red bar (where present) indicates the fraction of residues that have poor fit to the electron density. The numeric value is given above the bar.

Mol	Chain	Length	Quality of chain
1	L	281	 69% 26% . .
2	M	314	 2% 65% 26% . .
3	H	260	 2% 61% 27% . 8%

The following table lists non-polymeric compounds, carbohydrate monomers and non-standard residues in protein, DNA, RNA chains that are outliers for geometric or electron-density-fit criteria:

Mol	Type	Chain	Res	Chirality	Geometry	Clashes	Electron density
4	BCL	L	501	X	-	-	-
4	BCL	M	501	X	-	-	-
5	BPH	M	503	X	-	-	-
6	U10	L	504	-	-	-	X
7	LDA	L	709	-	-	-	X

2 Entry composition

There are 11 unique types of molecules in this entry. The entry contains 7287 atoms, of which 0 are hydrogens and 0 are deuteriums.

In the tables below, the ZeroOcc column contains the number of atoms modelled with zero occupancy, the AltConf column contains the number of residues with at least one atom in alternate conformation and the Trace column contains the number of residues modelled with at most 2 atoms.

- Molecule 1 is a protein called Reaction center protein L chain.

Mol	Chain	Residues	Atoms					ZeroOcc	AltConf	Trace
1	L	281	Total	C	N	O	S	0	0	0
			2232	1507	356	361	8			

There is a discrepancy between the modelled and reference sequences:

Chain	Residue	Modelled	Actual	Comment	Reference
L	212	GLN	GLU	engineered mutation	UNP P0C0Y8

- Molecule 2 is a protein called Reaction center protein M chain.

Mol	Chain	Residues	Atoms					ZeroOcc	AltConf	Trace
2	M	302	Total	C	N	O	S	0	0	0
			2408	1607	394	397	10			

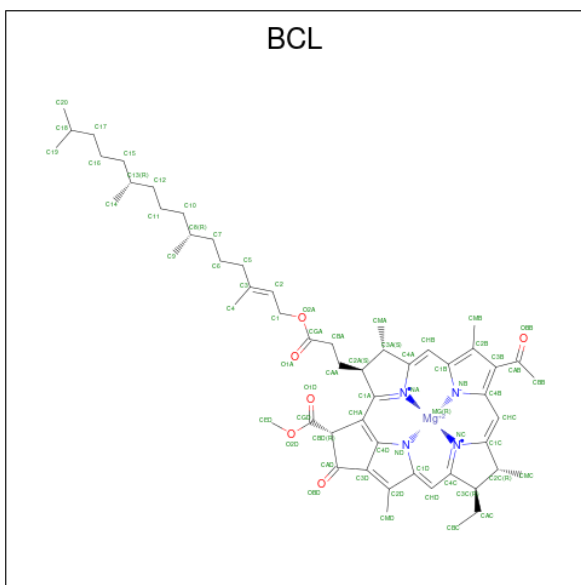
There are 7 discrepancies between the modelled and reference sequences:

Chain	Residue	Modelled	Actual	Comment	Reference
M	308	HIS	-	expression tag	UNP P0C0Y9
M	309	HIS	-	expression tag	UNP P0C0Y9
M	310	HIS	-	expression tag	UNP P0C0Y9
M	311	HIS	-	expression tag	UNP P0C0Y9
M	312	HIS	-	expression tag	UNP P0C0Y9
M	313	HIS	-	expression tag	UNP P0C0Y9
M	314	HIS	-	expression tag	UNP P0C0Y9

- Molecule 3 is a protein called Reaction center protein H chain.

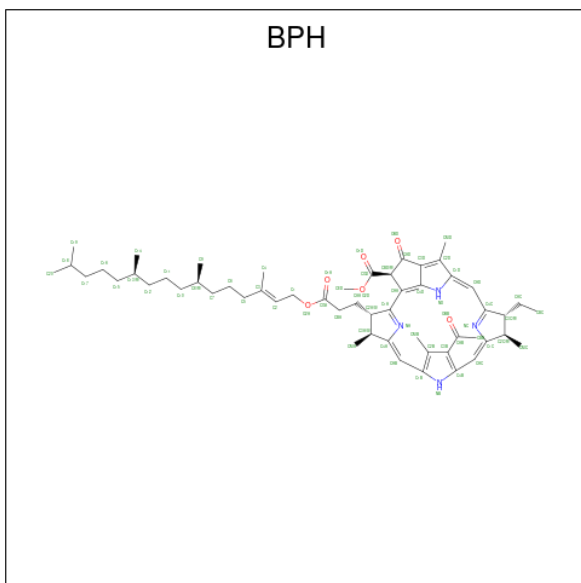
Mol	Chain	Residues	Atoms					ZeroOcc	AltConf	Trace
3	H	240	Total	C	N	O	S	0	0	0
			1829	1169	314	337	9			

- Molecule 4 is BACTERIOCHLOROPHYLL A (three-letter code: BCL) (formula: C₅₅H₇₄MgN₄O₆).



Mol	Chain	Residues	Atoms					ZeroOcc	AltConf
4	L	1	Total 66	C 55	Mg 1	N 4	O 6	0	0
4	L	1	Total 66	C 55	Mg 1	N 4	O 6	0	0
4	M	1	Total 66	C 55	Mg 1	N 4	O 6	0	0
4	M	1	Total 66	C 55	Mg 1	N 4	O 6	0	0

- Molecule 5 is BACTERIOPHEOPHYTIN A (three-letter code: BPH) (formula: $\text{C}_{55}\text{H}_{76}\text{N}_4\text{O}_6$).



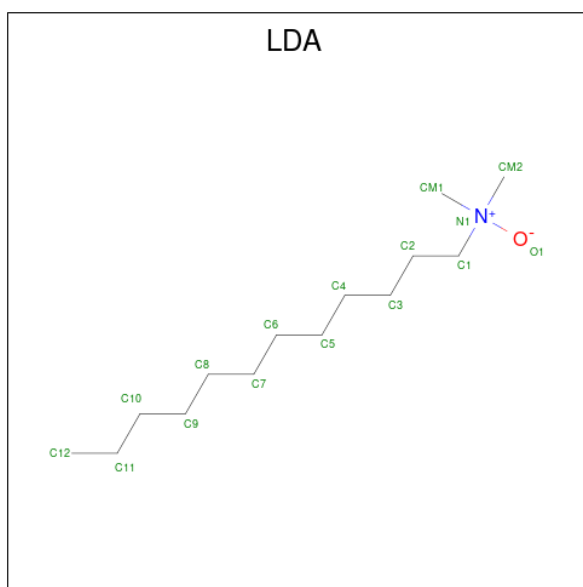
Mol	Chain	Residues	Atoms				ZeroOcc	AltConf
5	L	1	Total	C	N	O	0	0
			65	55	4	6		
5	M	1	Total	C	N	O	10	0
			65	55	4	6		

- Molecule 6 is UBIQUINONE-10 (three-letter code: U10) (formula: $C_{59}H_{90}O_4$).



Mol	Chain	Residues	Atoms			ZeroOcc	AltConf
6	L	1	Total	C	O	0	0
			48	44	4		
6	M	1	Total	C	O	0	0
			48	44	4		

- Molecule 7 is LAURYL DIMETHYLAMINE-N-OXIDE (three-letter code: LDA) (formula: $C_{14}H_{31}NO$).

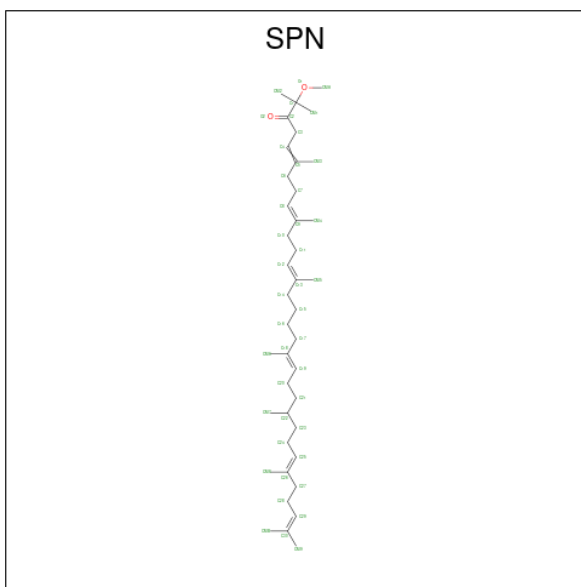


Mol	Chain	Residues	Atoms				ZeroOcc	AltConf
7	L	1	Total	C	N	O	0	0
			16	14	1	1		
7	M	1	Total	C	N	O	0	0
			16	14	1	1		
7	M	1	Total	C	N	O	0	0
			16	14	1	1		
7	H	1	Total	C	N	O	0	0
			16	14	1	1		

- Molecule 8 is FE (III) ION (three-letter code: FE) (formula: Fe).

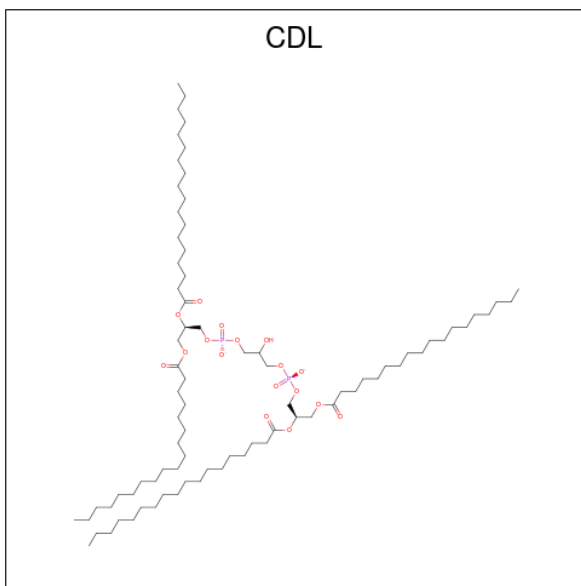
Mol	Chain	Residues	Atoms		ZeroOcc	AltConf
8	M	1	Total	Fe	0	0
			1	1		

- Molecule 9 is SPEROIDENONE (three-letter code: SPN) (formula: C₄₁H₇₀O₂).



Mol	Chain	Residues	Atoms			ZeroOcc	AltConf
9	M	1	Total	C	O	0	0
			43	41	2		

- Molecule 10 is CARDIOLIPIN (three-letter code: CDL) (formula: $C_{81}H_{156}O_{17}P_2$).



Mol	Chain	Residues	Atoms				ZeroOcc	AltConf
10	M	1	Total	C	O	P	0	0
			81	62	17	2		

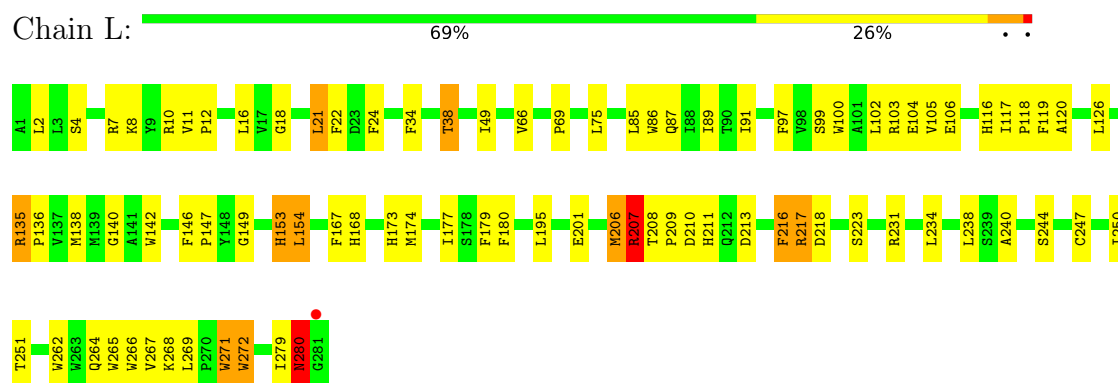
- Molecule 11 is water.

Mol	Chain	Residues	Atoms		ZeroOcc	AltConf
11	L	39	Total 39	O 39	0	0
11	M	40	Total 40	O 40	0	0
11	H	60	Total 60	O 60	0	0

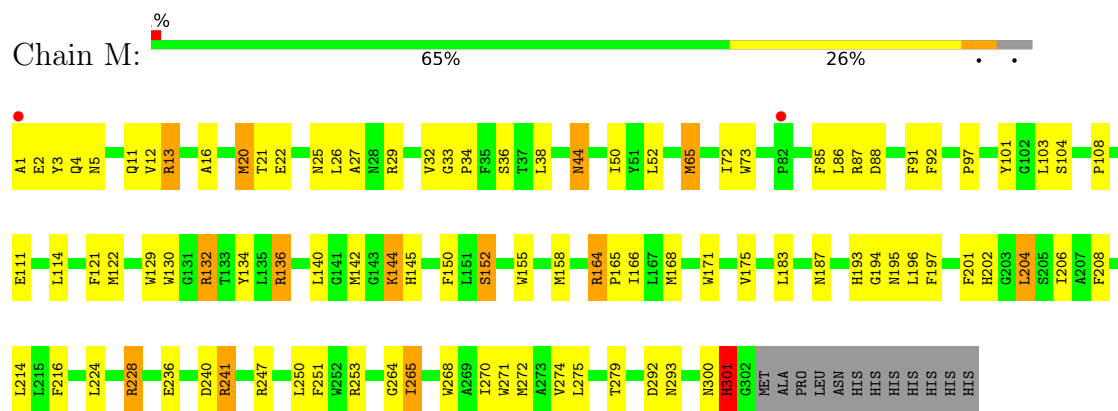
3 Residue-property plots

These plots are drawn for all protein, RNA, DNA and oligosaccharide chains in the entry. The first graphic for a chain summarises the proportions of the various outlier classes displayed in the second graphic. The second graphic shows the sequence view annotated by issues in geometry and electron density. Residues are color-coded according to the number of geometric quality criteria for which they contain at least one outlier: green = 0, yellow = 1, orange = 2 and red = 3 or more. A red dot above a residue indicates a poor fit to the electron density ($RSRZ > 2$). Stretches of 2 or more consecutive residues without any outlier are shown as a green connector. Residues present in the sample, but not in the model, are shown in grey.

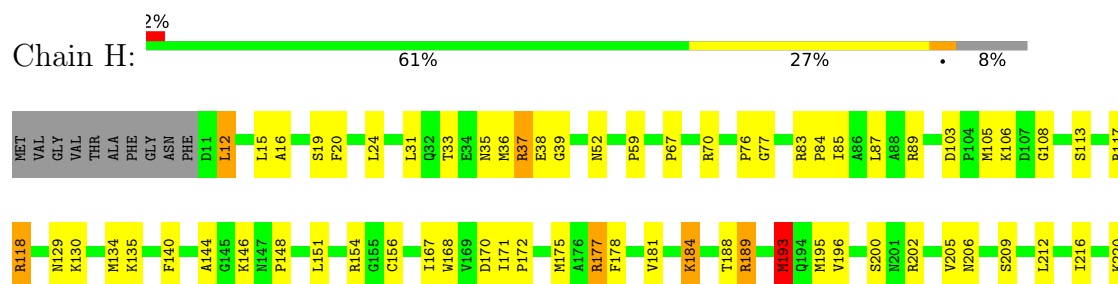
• Molecule 1: Reaction center protein L chain



• Molecule 2: Reaction center protein M chain



• Molecule 3: Reaction center protein H chain



S221	P222	T223	E224	V225	T226	E229	E230	D231	L241	M242	Y243	A244	A245	P246	K247	R248	K249	S250	VAL	VAL	ALA	ALA	ALA	MET	LEU	ALA	GLU	TYR	ALA

4 Data and refinement statistics

Property	Value	Source
Space group	P 31 2 1	Depositor
Cell constants a, b, c, α , β , γ	141.70Å 141.70Å 187.00Å 90.00° 90.00° 120.00°	Depositor
Resolution (Å)	30.00 – 3.00 29.15 – 3.00	Depositor EDS
% Data completeness (in resolution range)	(Not available) (30.00-3.00) 94.9 (29.15-3.00)	Depositor EDS
R_{merge}	0.10	Depositor
R_{sym}	(Not available)	Depositor
$\langle I/\sigma(I) \rangle$ ¹	3.98 (at 3.00Å)	Xtriage
Refinement program	CNS	Depositor
R, R_{free}	0.191 , (Not available) 0.191 , 0.199	Depositor DCC
R_{free} test set	3058 reflections (7.07%)	wwPDB-VP
Wilson B-factor (Å ²)	52.3	Xtriage
Anisotropy	0.108	Xtriage
Bulk solvent k_{sol} (e/Å ³), B_{sol} (Å ²)	0.30 , 68.7	EDS
L-test for twinning ²	$\langle L \rangle = 0.50$, $\langle L^2 \rangle = 0.33$	Xtriage
Estimated twinning fraction	0.022 for -h,-k,l	Xtriage
F_o, F_c correlation	0.92	EDS
Total number of atoms	7287	wwPDB-VP
Average B, all atoms (Å ²)	43.0	wwPDB-VP

Xtriage's analysis on translational NCS is as follows: *The largest off-origin peak in the Patterson function is 2.71% of the height of the origin peak. No significant pseudotranslation is detected.*

¹Intensities estimated from amplitudes.

²Theoretical values of $\langle |L| \rangle$, $\langle L^2 \rangle$ for acentric reflections are 0.5, 0.333 respectively for untwinned datasets, and 0.375, 0.2 for perfectly twinned datasets.

5 Model quality ⓘ

5.1 Standard geometry ⓘ

Bond lengths and bond angles in the following residue types are not validated in this section: LDA, SPN, BCL, BPH, U10, CDL, FE

The Z score for a bond length (or angle) is the number of standard deviations the observed value is removed from the expected value. A bond length (or angle) with $|Z| > 5$ is considered an outlier worth inspection. RMSZ is the root-mean-square of all Z scores of the bond lengths (or angles).

Mol	Chain	Bond lengths		Bond angles	
		RMSZ	$\# Z > 5$	RMSZ	$\# Z > 5$
1	L	0.95	0/2320	1.08	13/3175 (0.4%)
2	M	1.05	2/2500 (0.1%)	1.13	18/3413 (0.5%)
3	H	0.93	2/1877 (0.1%)	1.24	21/2553 (0.8%)
All	All	0.98	4/6697 (0.1%)	1.15	52/9141 (0.6%)

Chiral center outliers are detected by calculating the chiral volume of a chiral center and verifying if the center is modelled as a planar moiety or with the opposite hand. A planarity outlier is detected by checking planarity of atoms in a peptide group, atoms in a mainchain group or atoms of a sidechain that are expected to be planar.

Mol	Chain	#Chirality outliers	#Planarity outliers
1	L	0	1

All (4) bond length outliers are listed below:

Mol	Chain	Res	Type	Atoms	Z	Observed(Å)	Ideal(Å)
3	H	76	PRO	C-N	-6.34	1.21	1.33
3	H	77	GLY	N-CA	5.73	1.54	1.46
2	M	247	ARG	CG-CD	-5.44	1.38	1.51
2	M	301	HIS	CA-C	-5.15	1.39	1.52

All (52) bond angle outliers are listed below:

Mol	Chain	Res	Type	Atoms	Z	Observed(°)	Ideal(°)
3	H	248	ARG	CD-NE-CZ	13.05	141.88	123.60
2	M	247	ARG	NE-CZ-NH2	11.49	126.04	120.30
1	L	103	ARG	NE-CZ-NH1	10.94	125.77	120.30
3	H	250	SER	CA-C-O	-8.26	102.76	120.10
1	L	207	ARG	NE-CZ-NH2	7.49	124.04	120.30
2	M	13	ARG	NE-CZ-NH2	7.33	123.97	120.30

Continued on next page...

Continued from previous page...

Mol	Chain	Res	Type	Atoms	Z	Observed(°)	Ideal(°)
3	H	202	ARG	NE-CZ-NH2	7.31	123.95	120.30
3	H	70	ARG	NE-CZ-NH2	7.29	123.95	120.30
3	H	154	ARG	NE-CZ-NH2	7.29	123.94	120.30
1	L	231	ARG	NE-CZ-NH2	7.28	123.94	120.30
3	H	37	ARG	NE-CZ-NH2	7.25	123.93	120.30
2	M	164	ARG	NE-CZ-NH2	7.24	123.92	120.30
3	H	117	ARG	NE-CZ-NH2	7.23	123.91	120.30
1	L	217	ARG	NE-CZ-NH2	7.14	123.87	120.30
3	H	189	ARG	NE-CZ-NH2	6.78	123.69	120.30
2	M	52	LEU	CB-CA-C	6.74	123.01	110.20
2	M	228	ARG	NE-CZ-NH2	6.71	123.66	120.30
3	H	248	ARG	NE-CZ-NH1	6.65	123.63	120.30
2	M	247	ARG	CD-NE-CZ	6.57	132.80	123.60
1	L	135	ARG	NE-CZ-NH2	6.56	123.58	120.30
2	M	136	ARG	NE-CZ-NH2	6.50	123.55	120.30
2	M	253	ARG	NE-CZ-NH2	6.49	123.54	120.30
2	M	132	ARG	NE-CZ-NH2	6.47	123.53	120.30
3	H	177	ARG	NE-CZ-NH2	6.44	123.52	120.30
1	L	103	ARG	NH1-CZ-NH2	-6.41	112.35	119.40
3	H	83	ARG	NE-CZ-NH2	6.38	123.49	120.30
1	L	280	ASN	O-C-N	-6.31	112.47	123.20
1	L	7	ARG	NE-CZ-NH2	6.28	123.44	120.30
2	M	241	ARG	NE-CZ-NH2	6.26	123.43	120.30
2	M	20	MET	CG-SD-CE	6.12	109.98	100.20
3	H	175	MET	CG-SD-CE	6.09	109.94	100.20
1	L	206	MET	CG-SD-CE	6.09	109.94	100.20
2	M	158	MET	CG-SD-CE	6.06	109.89	100.20
1	L	10	ARG	NE-CZ-NH2	6.06	123.33	120.30
3	H	36	MET	CG-SD-CE	6.04	109.86	100.20
3	H	89	ARG	NE-CZ-NH2	5.97	123.28	120.30
3	H	134	MET	CG-SD-CE	5.90	109.64	100.20
1	L	174	MET	CG-SD-CE	5.87	109.60	100.20
2	M	1	ALA	CB-CA-C	5.86	118.89	110.10
3	H	242	MET	CG-SD-CE	5.80	109.48	100.20
2	M	142	MET	CG-SD-CE	5.79	109.47	100.20
2	M	272	MET	CG-SD-CE	5.75	109.40	100.20
3	H	193	MET	CG-SD-CE	5.74	109.38	100.20
1	L	138	MET	CG-SD-CE	5.71	109.33	100.20
3	H	178	PHE	CB-CA-C	-5.69	99.02	110.40
2	M	122	MET	CG-SD-CE	5.65	109.24	100.20
3	H	105	MET	CG-SD-CE	5.64	109.22	100.20
2	M	65	MET	CG-SD-CE	5.62	109.19	100.20

Continued on next page...

Continued from previous page...

Mol	Chain	Res	Type	Atoms	Z	Observed(°)	Ideal(°)
3	H	195	MET	CG-SD-CE	5.54	109.06	100.20
3	H	118	ARG	NE-CZ-NH2	5.44	123.02	120.30
2	M	168	MET	CG-SD-CE	5.34	108.74	100.20
1	L	2	LEU	CB-CA-C	-5.07	100.56	110.20

There are no chirality outliers.

All (1) planarity outliers are listed below:

Mol	Chain	Res	Type	Group
1	L	280	ASN	Mainchain

5.2 Too-close contacts

In the following table, the Non-H and H(model) columns list the number of non-hydrogen atoms and hydrogen atoms in the chain respectively. The H(added) column lists the number of hydrogen atoms added and optimized by MolProbity. The Clashes column lists the number of clashes within the asymmetric unit, whereas Symm-Clashes lists symmetry-related clashes.

Mol	Chain	Non-H	H(model)	H(added)	Clashes	Symm-Clashes
1	L	2232	0	2189	74	0
2	M	2408	0	2321	77	0
3	H	1829	0	1836	46	0
4	L	132	0	148	15	0
4	M	132	0	148	17	0
5	L	65	0	76	2	0
5	M	65	0	76	1	0
6	L	48	0	63	6	0
6	M	48	0	63	6	0
7	H	16	0	31	4	0
7	L	16	0	31	4	0
7	M	32	0	62	4	0
8	M	1	0	0	0	0
9	M	43	0	69	1	0
10	M	81	0	106	1	0
11	H	60	0	0	2	0
11	L	39	0	0	1	0
11	M	40	0	0	1	0
All	All	7287	0	7219	203	0

The all-atom clashscore is defined as the number of clashes found per 1000 atoms (including hydrogen atoms). The all-atom clashscore for this structure is 14.

All (203) close contacts within the same asymmetric unit are listed below, sorted by their clash magnitude.

Atom-1	Atom-2	Interatomic distance (Å)	Clash overlap (Å)
3:H:33:THR:O	3:H:59:PRO:HG3	1.69	0.91
1:L:34:PHE:O	1:L:38:THR:HG23	1.71	0.89
6:M:504:U10:H202	7:H:703:LDA:H112	1.54	0.88
2:M:204:LEU:HB3	2:M:279:THR:HG21	1.56	0.85
3:H:146:LYS:NZ	3:H:200:SER:O	2.11	0.83
2:M:197:PHE:HZ	4:M:502:BCL:HBB2	1.47	0.80
4:L:502:BCL:OBB	4:L:502:BCL:HHC	1.81	0.79
1:L:179:PHE:CE1	6:L:504:U10:H18	2.21	0.76
1:L:208:THR:O	1:L:211:HIS:HB2	1.86	0.75
2:M:197:PHE:CZ	4:M:502:BCL:HBB2	2.22	0.75
4:M:502:BCL:CBB	4:M:502:BCL:HHC	2.19	0.72
2:M:270:ILE:HD13	10:M:800:CDL:H711	1.71	0.72
1:L:91:ILE:HG13	7:L:709:LDA:H91	1.71	0.72
2:M:21:THR:CG2	2:M:26:LEU:HD11	2.20	0.71
2:M:208:PHE:HE1	7:M:701:LDA:H91	1.55	0.70
2:M:152:SER:O	2:M:155:TRP:HB3	1.91	0.70
1:L:91:ILE:CG1	7:L:709:LDA:H91	2.22	0.70
2:M:21:THR:HG23	2:M:26:LEU:HD21	1.73	0.69
1:L:135:ARG:HB3	1:L:136:PRO:HD3	1.76	0.67
3:H:129:ASN:ND2	3:H:224:GLU:HG2	2.08	0.67
4:M:502:BCL:HHC	4:M:502:BCL:HBB3	1.77	0.67
3:H:171:ILE:HB	3:H:172:PRO:HD3	1.76	0.67
2:M:130:TRP:HD1	2:M:150:PHE:CD2	2.13	0.67
4:M:501:BCL:C11	4:M:502:BCL:H203	2.26	0.66
4:L:501:BCL:HBB2	4:L:501:BCL:HMB1	1.79	0.65
6:M:504:U10:H202	7:H:703:LDA:C11	2.27	0.64
1:L:208:THR:HB	1:L:209:PRO:HD2	1.80	0.64
1:L:22:PHE:HA	1:L:24:PHE:CE2	2.34	0.63
1:L:38:THR:HG22	1:L:99:SER:HB3	1.79	0.63
1:L:216:PHE:CE2	6:L:504:U10:H4M2	2.34	0.63
2:M:13:ARG:O	3:H:140:PHE:HA	1.98	0.63
2:M:21:THR:HG23	2:M:26:LEU:HD11	1.80	0.63
2:M:193:HIS:O	2:M:293:ASN:HA	1.98	0.63
4:M:501:BCL:H111	4:M:502:BCL:H203	1.81	0.62
2:M:134:TYR:CE2	2:M:144:LYS:HG2	2.36	0.61
1:L:69:PRO:HG2	1:L:142:TRP:HB2	1.83	0.61
4:L:501:BCL:H192	5:L:503:BPH:H7C2	1.83	0.60
3:H:37:ARG:HG2	3:H:37:ARG:HH11	1.67	0.60
3:H:241:LEU:O	3:H:248:ARG:NH2	2.34	0.60
4:M:501:BCL:CBB	4:M:501:BCL:HMB1	2.32	0.60

Continued on next page...

Continued from previous page...

Atom-1	Atom-2	Interatomic distance (Å)	Clash overlap (Å)
1:L:16:LEU:N	1:L:106:GLU:OE2	2.31	0.60
2:M:130:TRP:HD1	2:M:150:PHE:HD2	1.49	0.59
1:L:8:LYS:HA	3:H:87:LEU:CD1	2.33	0.59
1:L:244:SER:OG	4:L:502:BCL:HMA2	2.02	0.59
3:H:148:PRO:HA	3:H:151:LEU:HD12	1.84	0.59
2:M:194:GLY:O	2:M:195:ASN:HB3	2.03	0.58
3:H:196:VAL:HG12	3:H:205:VAL:HG22	1.85	0.58
2:M:208:PHE:CE1	7:M:701:LDA:H91	2.37	0.58
3:H:129:ASN:ND2	3:H:224:GLU:CG	2.66	0.58
1:L:8:LYS:HA	3:H:87:LEU:HD11	1.85	0.58
1:L:116:HIS:O	1:L:119:PHE:HB3	2.04	0.58
4:M:501:BCL:HMB1	4:M:501:BCL:HBB2	1.85	0.57
3:H:177:ARG:O	3:H:193:MET:HB2	2.03	0.57
1:L:173:HIS:CE1	1:L:177:ILE:HD11	2.40	0.57
1:L:180:PHE:CE2	1:L:240:ALA:HB1	2.39	0.56
1:L:264:GLN:HA	1:L:267:VAL:HG12	1.86	0.56
1:L:85:LEU:O	1:L:89:ILE:HG13	2.06	0.56
1:L:38:THR:HG22	1:L:99:SER:CB	2.35	0.56
2:M:21:THR:HG21	2:M:26:LEU:HD11	1.87	0.55
1:L:201:GLU:OE2	2:M:144:LYS:NZ	2.39	0.55
1:L:218:ASP:OD1	2:M:29:ARG:HD3	2.07	0.55
3:H:244:ALA:C	3:H:246:PRO:HD2	2.27	0.55
1:L:269:LEU:HB2	1:L:272:TRP:NE1	2.22	0.54
1:L:4:SER:OG	3:H:39:GLY:HA2	2.07	0.54
2:M:85:PHE:HD2	2:M:86:LEU:HD12	1.73	0.54
2:M:72:ILE:HG13	2:M:73:TRP:N	2.22	0.54
2:M:130:TRP:CD1	2:M:150:PHE:HD2	2.25	0.54
2:M:108:PRO:HG2	2:M:111:GLU:HB2	1.90	0.53
1:L:250:ILE:HD12	6:L:504:U10:H402	1.90	0.53
1:L:267:VAL:HG21	1:L:280:ASN:ND2	2.24	0.53
4:L:501:BCL:HMD1	2:M:206:ILE:HD13	1.91	0.53
4:L:502:BCL:H203	4:L:501:BCL:H102	1.91	0.52
7:M:701:LDA:H101	7:H:703:LDA:C12	2.39	0.52
3:H:20:PHE:HE2	3:H:24:LEU:HD22	1.74	0.52
1:L:234:LEU:O	1:L:238:LEU:HG	2.09	0.52
1:L:271:TRP:CD1	1:L:271:TRP:N	2.77	0.52
1:L:142:TRP:CZ2	7:L:709:LDA:H51	2.44	0.52
1:L:223:SER:O	2:M:44:ASN:HB2	2.10	0.52
2:M:20:MET:O	2:M:29:ARG:NH2	2.42	0.52
2:M:32:VAL:HG12	2:M:33:GLY:O	2.09	0.52
2:M:44:ASN:HB3	11:M:1048:HOH:O	2.10	0.52

Continued on next page...

Continued from previous page...

Atom-1	Atom-2	Interatomic distance (Å)	Clash overlap (Å)
2:M:25:ASN:OD1	2:M:27:ALA:HB3	2.10	0.52
3:H:184:LYS:O	3:H:184:LYS:HG3	2.10	0.52
2:M:101:TYR:O	2:M:104:SER:HB2	2.10	0.51
2:M:187:ASN:HA	4:M:502:BCL:CBC	2.40	0.51
1:L:195:LEU:HB3	2:M:145:HIS:CD2	2.45	0.51
5:L:503:BPH:ND	2:M:214:LEU:HD13	2.26	0.51
3:H:168:TRP:CZ3	3:H:225:VAL:HG22	2.44	0.51
3:H:226:THR:OG1	3:H:229:GLU:HG3	2.10	0.50
3:H:84:PRO:O	3:H:85:ILE:HD13	2.11	0.50
1:L:213:ASP:O	1:L:217:ARG:HG3	2.11	0.50
2:M:3:TYR:CZ	2:M:5:ASN:HA	2.47	0.50
2:M:175:VAL:HG11	9:M:600:SPN:H161	1.93	0.49
1:L:75:LEU:HD11	1:L:140:GLY:HA2	1.94	0.49
1:L:223:SER:OG	6:L:504:U10:H3M1	2.11	0.49
2:M:241:ARG:NH1	3:H:38:GLU:OE1	2.41	0.49
1:L:11:VAL:HB	1:L:12:PRO:HD2	1.94	0.49
1:L:135:ARG:HB3	1:L:136:PRO:CD	2.42	0.49
1:L:262:TRP:O	1:L:265:TRP:HD1	1.95	0.49
3:H:129:ASN:HD22	3:H:224:GLU:HG2	1.75	0.49
4:L:502:BCL:HAA2	4:L:501:BCL:HAC1	1.93	0.49
2:M:4:GLN:HE21	2:M:4:GLN:HA	1.78	0.49
3:H:12:LEU:O	3:H:15:LEU:HB3	2.12	0.49
1:L:168:HIS:HB3	2:M:183:LEU:HD13	1.95	0.49
2:M:88:ASP:HB2	2:M:92:PHE:CZ	2.48	0.48
1:L:207:ARG:NH1	2:M:140:LEU:O	2.38	0.48
2:M:97:PRO:HG2	2:M:171:TRP:HB2	1.95	0.48
3:H:84:PRO:C	3:H:85:ILE:HD13	2.34	0.48
2:M:101:TYR:O	2:M:104:SER:CB	2.62	0.48
1:L:104:GLU:HB3	1:L:118:PRO:HG3	1.96	0.48
4:L:502:BCL:OBB	4:L:502:BCL:CHC	2.55	0.48
3:H:20:PHE:CE2	3:H:24:LEU:HD22	2.48	0.47
1:L:87:GLN:NE2	1:L:142:TRP:CD1	2.82	0.47
2:M:164:ARG:HB3	2:M:165:PRO:HD3	1.95	0.47
1:L:168:HIS:CD2	4:M:501:BCL:CMD	2.98	0.47
2:M:130:TRP:CD1	2:M:150:PHE:CD2	3.00	0.47
7:M:701:LDA:H101	7:H:703:LDA:H121	1.97	0.47
1:L:49:ILE:HG12	1:L:89:ILE:HD13	1.97	0.46
1:L:279:ILE:HG21	2:M:91:PHE:HB3	1.97	0.46
1:L:102:LEU:O	1:L:105:VAL:HB	2.15	0.46
3:H:170:ASP:HB2	3:H:177:ARG:HG3	1.97	0.46
1:L:207:ARG:HG3	1:L:211:HIS:CG	2.51	0.46

Continued on next page...

Continued from previous page...

Atom-1	Atom-2	Interatomic distance (Å)	Clash overlap (Å)
1:L:22:PHE:HA	1:L:24:PHE:HE2	1.80	0.45
1:L:34:PHE:HB2	11:L:1003:HOH:O	2.15	0.45
2:M:16:ALA:HB1	2:M:32:VAL:HG11	1.98	0.45
1:L:177:ILE:HG23	4:L:502:BCL:HMB3	1.97	0.45
6:L:504:U10:H372	6:L:504:U10:H351	1.70	0.45
2:M:202:HIS:CE1	2:M:206:ILE:HD11	2.52	0.45
2:M:240:ASP:HB2	3:H:118:ARG:HH21	1.82	0.45
2:M:250:LEU:O	2:M:251:PHE:C	2.53	0.45
2:M:4:GLN:HA	2:M:4:GLN:NE2	2.31	0.45
2:M:268:TRP:CD1	6:M:504:U10:H111	2.52	0.45
2:M:201:PHE:HD1	2:M:279:THR:HG23	1.82	0.44
3:H:148:PRO:HD2	3:H:167:ILE:HD11	1.98	0.44
2:M:264:GLY:HA3	3:H:35:ASN:OD1	2.17	0.44
3:H:171:ILE:HB	3:H:172:PRO:CD	2.47	0.44
6:L:504:U10:H271	6:L:504:U10:H251	1.79	0.44
2:M:251:PHE:C	2:M:251:PHE:CD1	2.91	0.44
1:L:264:GLN:O	1:L:268:LYS:HB2	2.17	0.43
3:H:189:ARG:HD2	3:H:216:ILE:HB	1.99	0.43
4:L:502:BCL:HMB1	4:L:502:BCL:HBB3	2.00	0.43
2:M:25:ASN:OD1	2:M:25:ASN:C	2.57	0.43
2:M:236:GLU:HB3	11:H:1085:HOH:O	2.19	0.43
6:M:504:U10:H28	6:M:504:U10:H322	1.48	0.43
1:L:217:ARG:O	2:M:50:ILE:HA	2.18	0.43
2:M:2:GLU:OE2	2:M:228:ARG:NH2	2.51	0.43
2:M:268:TRP:CE3	3:H:31:LEU:HD13	2.53	0.43
1:L:49:ILE:CG1	1:L:89:ILE:HD13	2.49	0.43
1:L:234:LEU:HD22	2:M:224:LEU:HD12	1.99	0.43
4:M:502:BCL:HBB2	4:M:502:BCL:HHC	1.98	0.43
1:L:100:TRP:CH2	6:M:504:U10:H251	2.54	0.43
1:L:117:ILE:HB	1:L:118:PRO:HD3	2.00	0.43
3:H:37:ARG:HG2	3:H:37:ARG:NH1	2.32	0.43
1:L:265:TRP:CG	1:L:266:TRP:N	2.87	0.43
2:M:11:GLN:HB2	3:H:144:ALA:HB3	1.99	0.43
1:L:153:HIS:CE1	1:L:154:LEU:HD23	2.54	0.43
1:L:173:HIS:O	1:L:177:ILE:HG13	2.20	0.42
2:M:12:VAL:CG1	3:H:140:PHE:HD2	2.32	0.42
3:H:16:ALA:O	3:H:19:SER:HB2	2.20	0.42
2:M:129:TRP:CH2	2:M:132:ARG:NH1	2.88	0.42
1:L:85:LEU:HD23	1:L:85:LEU:HA	1.89	0.42
2:M:3:TYR:OH	2:M:5:ASN:HA	2.20	0.42
3:H:209:SER:OG	3:H:212:LEU:HD12	2.20	0.42

Continued on next page...

Continued from previous page...

Atom-1	Atom-2	Interatomic distance (Å)	Clash overlap (Å)
3:H:181:VAL:O	3:H:188:THR:HA	2.19	0.42
2:M:36:SER:OG	2:M:38:LEU:HB3	2.19	0.42
2:M:114:LEU:HD12	2:M:114:LEU:HA	1.84	0.42
2:M:300:ASN:O	2:M:301:HIS:HB2	2.20	0.42
1:L:167:PHE:HB3	4:L:502:BCL:HMC3	2.02	0.42
4:L:502:BCL:H141	4:L:502:BCL:H162	1.90	0.42
3:H:130:LYS:HD2	11:H:1118:HOH:O	2.19	0.42
3:H:156:CYS:HB3	3:H:206:ASN:O	2.19	0.42
1:L:168:HIS:NE2	4:M:501:BCL:HMD3	2.35	0.42
3:H:245:ALA:HB3	3:H:246:PRO:HD3	2.02	0.42
1:L:149:GLY:O	1:L:153:HIS:HB3	2.20	0.41
2:M:2:GLU:HG2	2:M:3:TYR:N	2.35	0.41
2:M:197:PHE:HD1	2:M:197:PHE:HA	1.72	0.41
1:L:97:PHE:CE1	4:L:502:BCL:H121	2.56	0.41
1:L:120:ALA:HB1	1:L:238:LEU:HD21	2.01	0.41
1:L:267:VAL:HG21	1:L:280:ASN:HD22	1.85	0.41
2:M:65:MET:HB3	2:M:121:PHE:CD2	2.56	0.41
2:M:134:TYR:CD2	2:M:144:LYS:HG2	2.55	0.41
2:M:265:ILE:HG12	6:M:504:U10:C2	2.51	0.41
3:H:247:LYS:O	3:H:249:LYS:NZ	2.53	0.41
2:M:271:TRP:O	2:M:275:LEU:HG	2.20	0.41
3:H:103:ASP:HB3	3:H:106:LYS:HB2	2.02	0.41
1:L:18:GLY:O	1:L:21:LEU:HB2	2.21	0.41
1:L:146:PHE:HA	1:L:147:PRO:HD3	1.93	0.41
1:L:206:MET:O	3:H:67:PRO:HG3	2.21	0.41
1:L:267:VAL:HG23	2:M:87:ARG:HG2	2.03	0.41
4:L:501:BCL:H161	4:L:501:BCL:H122	1.80	0.41
4:M:501:BCL:C4A	4:M:501:BCL:HBA1	2.50	0.41
3:H:148:PRO:O	3:H:151:LEU:HG	2.21	0.41
1:L:21:LEU:HD13	1:L:22:PHE:CE1	2.56	0.41
2:M:103:LEU:HD21	2:M:166:ILE:HA	2.03	0.41
2:M:270:ILE:O	2:M:274:VAL:HB	2.20	0.40
4:M:502:BCL:H191	5:M:503:BPH:H8	2.03	0.40
4:M:502:BCL:CBB	4:M:502:BCL:CHC	2.92	0.40
1:L:66:VAL:HG12	1:L:86:TRP:HB2	2.03	0.40
2:M:187:ASN:HA	4:M:502:BCL:HBC3	2.03	0.40
1:L:91:ILE:HG12	7:L:709:LDA:H91	2.00	0.40
1:L:97:PHE:CZ	4:L:502:BCL:H121	2.57	0.40
4:M:501:BCL:OBB	4:M:501:BCL:HHC	2.21	0.40
3:H:108:GLY:O	3:H:113:SER:HA	2.22	0.40

There are no symmetry-related clashes.

5.3 Torsion angles

5.3.1 Protein backbone

In the following table, the Percentiles column shows the percent Ramachandran outliers of the chain as a percentile score with respect to all X-ray entries followed by that with respect to entries of similar resolution.

The Analysed column shows the number of residues for which the backbone conformation was analysed, and the total number of residues.

Mol	Chain	Analysed	Favoured	Allowed	Outliers	Percentiles	
1	L	279/281 (99%)	265 (95%)	14 (5%)	0	100	100
2	M	300/314 (96%)	286 (95%)	11 (4%)	3 (1%)	15	53
3	H	238/260 (92%)	229 (96%)	9 (4%)	0	100	100
All	All	817/855 (96%)	780 (96%)	34 (4%)	3 (0%)	34	72

All (3) Ramachandran outliers are listed below:

Mol	Chain	Res	Type
2	M	301	HIS
2	M	22	GLU
2	M	34	PRO

5.3.2 Protein sidechains

In the following table, the Percentiles column shows the percent sidechain outliers of the chain as a percentile score with respect to all X-ray entries followed by that with respect to entries of similar resolution.

The Analysed column shows the number of residues for which the sidechain conformation was analysed, and the total number of residues.

Mol	Chain	Analysed	Rotameric	Outliers	Percentiles	
1	L	220/220 (100%)	208 (94%)	12 (6%)	21	57
2	M	236/247 (96%)	227 (96%)	9 (4%)	33	69
3	H	195/208 (94%)	184 (94%)	11 (6%)	21	56
All	All	651/675 (96%)	619 (95%)	32 (5%)	25	61

All (32) residues with a non-rotameric sidechain are listed below:

Mol	Chain	Res	Type
1	L	21	LEU
1	L	38	THR
1	L	126	LEU
1	L	153	HIS
1	L	154	LEU
1	L	207	ARG
1	L	210	ASP
1	L	216	PHE
1	L	247	CYS
1	L	251	THR
1	L	271	TRP
1	L	272	TRP
2	M	44	ASN
2	M	136	ARG
2	M	144	LYS
2	M	152	SER
2	M	196	LEU
2	M	204	LEU
2	M	216	PHE
2	M	265	ILE
2	M	292	ASP
3	H	12	LEU
3	H	52	ASN
3	H	135	LYS
3	H	184	LYS
3	H	193	MET
3	H	220	LYS
3	H	221	SER
3	H	222	PRO
3	H	225	VAL
3	H	231	ASP
3	H	249	LYS

Sometimes sidechains can be flipped to improve hydrogen bonding and reduce clashes. All (4) such sidechains are listed below:

Mol	Chain	Res	Type
1	L	280	ASN
2	M	4	GLN
2	M	188	ASN
3	H	129	ASN

5.3.3 RNA ⓘ

There are no RNA molecules in this entry.

5.4 Non-standard residues in protein, DNA, RNA chains ⓘ

There are no non-standard protein/DNA/RNA residues in this entry.

5.5 Carbohydrates ⓘ

There are no monosaccharides in this entry.

5.6 Ligand geometry ⓘ

Of 15 ligands modelled in this entry, 1 is monoatomic - leaving 14 for Mogul analysis.

In the following table, the Counts columns list the number of bonds (or angles) for which Mogul statistics could be retrieved, the number of bonds (or angles) that are observed in the model and the number of bonds (or angles) that are defined in the Chemical Component Dictionary. The Link column lists molecule types, if any, to which the group is linked. The Z score for a bond length (or angle) is the number of standard deviations the observed value is removed from the expected value. A bond length (or angle) with $|Z| > 2$ is considered an outlier worth inspection. RMSZ is the root-mean-square of all Z scores of the bond lengths (or angles).

Mol	Type	Chain	Res	Link	Bond lengths			Bond angles		
					Counts	RMSZ	$\# Z > 2$	Counts	RMSZ	$\# Z > 2$
4	BCL	M	501	2	58,74,74	1.57	10 (17%)	69,115,115	2.54	27 (39%)
7	LDA	M	704	-	12,15,15	2.06	1 (8%)	14,17,17	0.52	0
10	CDL	M	800	-	80,80,99	0.48	0	86,92,111	0.93	5 (5%)
7	LDA	H	703	-	12,15,15	2.41	1 (8%)	14,17,17	0.65	0
6	U10	M	504	-	48,48,63	2.46	21 (43%)	58,61,79	1.30	7 (12%)
9	SPN	M	600	-	40,42,42	3.75	17 (42%)	50,52,52	2.58	16 (32%)
5	BPH	M	503	-	64,70,70	1.34	7 (10%)	76,101,101	2.29	29 (38%)
5	BPH	L	503	-	64,70,70	1.30	9 (14%)	76,101,101	1.92	19 (25%)
4	BCL	M	502	2	58,74,74	1.31	8 (13%)	69,115,115	1.94	13 (18%)
4	BCL	L	502	1	58,74,74	1.61	10 (17%)	69,115,115	2.63	14 (20%)
4	BCL	L	501	1	58,74,74	1.39	10 (17%)	69,115,115	2.24	14 (20%)
7	LDA	M	701	-	12,15,15	2.56	1 (8%)	14,17,17	0.40	0
7	LDA	L	709	-	12,15,15	2.42	1 (8%)	14,17,17	0.49	0
6	U10	L	504	-	48,48,63	2.15	20 (41%)	58,61,79	1.01	3 (5%)

In the following table, the Chirals column lists the number of chiral outliers, the number of chiral centers analysed, the number of these observed in the model and the number defined in the Chemical Component Dictionary. Similar counts are reported in the Torsion and Rings columns. '-' means no outliers of that kind were identified.

Mol	Type	Chain	Res	Link	Chirals	Torsions	Rings
4	BCL	M	501	2	2/2/21/25	15/37/137/137	-
7	LDA	M	704	-	-	2/13/13/13	-
10	CDL	M	800	-	-	30/91/91/110	-
7	LDA	H	703	-	-	5/13/13/13	-
6	U10	M	504	-	-	10/45/69/87	0/1/1/1
9	SPN	M	600	-	-	19/50/51/51	-
5	BPH	M	503	-	1/1/18/22	16/54/105/105	0/5/6/6
5	BPH	L	503	-	-	5/54/105/105	0/5/6/6
4	BCL	M	502	2	-	7/37/137/137	-
4	BCL	L	502	1	-	6/37/137/137	-
4	BCL	L	501	1	1/1/21/25	10/37/137/137	-
7	LDA	M	701	-	-	8/13/13/13	-
7	LDA	L	709	-	-	4/13/13/13	-
6	U10	L	504	-	-	9/45/69/87	0/1/1/1

All (116) bond length outliers are listed below:

Mol	Chain	Res	Type	Atoms	Z	Observed(Å)	Ideal(Å)
9	M	600	SPN	C4-C5	8.89	1.54	1.33
9	M	600	SPN	C19-C18	8.79	1.54	1.33
7	M	701	LDA	O1-N1	-8.73	1.21	1.42
9	M	600	SPN	C8-C9	8.43	1.53	1.33
7	H	703	LDA	O1-N1	-8.34	1.22	1.42
7	L	709	LDA	O1-N1	-8.28	1.22	1.42
9	M	600	SPN	C12-C13	8.17	1.52	1.33
6	M	504	U10	C27-C28	-7.34	1.26	1.50
6	M	504	U10	O3-C3	7.30	1.54	1.36
7	M	704	LDA	O1-N1	-6.99	1.25	1.42
9	M	600	SPN	C3-C4	-6.55	1.41	1.50
9	M	600	SPN	C17-C18	-5.91	1.39	1.51
9	M	600	SPN	C10-C9	-5.79	1.39	1.51
9	M	600	SPN	C14-C13	-5.41	1.40	1.51
9	M	600	SPN	C6-C5	-5.21	1.40	1.51
4	L	502	BCL	O2D-CED	-5.07	1.33	1.45
4	M	501	BCL	O2D-CGD	4.78	1.44	1.33
4	L	501	BCL	O2D-CGD	4.61	1.44	1.33

Continued on next page...

Continued from previous page...

Mol	Chain	Res	Type	Atoms	Z	Observed(Å)	Ideal(Å)
6	L	504	U10	O3-C3	4.50	1.47	1.36
4	M	501	BCL	MG-NA	4.49	2.16	2.06
4	L	502	BCL	C1-C2	-4.27	1.36	1.49
4	L	502	BCL	MG-NA	4.23	2.16	2.06
4	M	502	BCL	C1B-NB	4.17	1.38	1.35
4	L	502	BCL	O2A-CGA	4.15	1.45	1.33
4	L	501	BCL	MG-NA	4.05	2.15	2.06
4	M	502	BCL	MG-NA	4.00	2.15	2.06
6	L	504	U10	O4-C4	3.98	1.46	1.36
6	L	504	U10	C7-C6	3.93	1.57	1.51
5	L	503	BPH	O2D-CGD	3.87	1.42	1.33
5	M	503	BPH	O2A-CGA	3.85	1.44	1.33
5	M	503	BPH	O2D-CGD	3.83	1.42	1.33
6	M	504	U10	C17-C18	-3.81	1.38	1.50
4	M	501	BCL	O2A-CGA	3.73	1.44	1.33
4	M	502	BCL	C4B-NB	3.69	1.38	1.35
6	M	504	U10	O4-C4	3.62	1.45	1.36
4	M	501	BCL	C1B-NB	3.60	1.38	1.35
9	M	600	SPN	C20-C19	-3.49	1.39	1.50
6	M	504	U10	C36-C34	3.48	1.58	1.51
5	L	503	BPH	O2A-CGA	3.44	1.43	1.33
6	L	504	U10	C33-C34	3.41	1.41	1.33
6	L	504	U10	C28-C29	3.38	1.41	1.33
4	M	501	BCL	C4B-NB	3.37	1.38	1.35
9	M	600	SPN	C25-C26	3.35	1.41	1.33
6	M	504	U10	C37-C38	-3.27	1.39	1.50
6	M	504	U10	C22-C23	-3.24	1.39	1.50
6	L	504	U10	C36-C34	3.21	1.58	1.51
6	M	504	U10	C35-C34	3.21	1.58	1.50
4	L	501	BCL	C4B-NB	3.16	1.38	1.35
6	L	504	U10	C23-C24	3.16	1.40	1.33
6	M	504	U10	C33-C34	3.16	1.40	1.33
4	L	502	BCL	C4B-NB	3.13	1.38	1.35
6	L	504	U10	C17-C18	-3.09	1.40	1.50
9	M	600	SPN	C11-C12	-3.07	1.40	1.50
9	M	600	SPN	C7-C8	-3.07	1.40	1.50
4	L	502	BCL	MG-NC	3.05	2.13	2.06
9	M	600	SPN	C29-C30	3.05	1.41	1.32
6	L	504	U10	C31-C29	2.97	1.57	1.51
6	L	504	U10	C13-C14	2.96	1.40	1.33
6	L	504	U10	O4-C4M	-2.96	1.38	1.45
6	L	504	U10	C8-C9	2.95	1.40	1.33

Continued on next page...

Continued from previous page...

Mol	Chain	Res	Type	Atoms	Z	Observed(Å)	Ideal(Å)
9	M	600	SPN	O1-CMA	2.95	1.52	1.43
6	L	504	U10	C38-C39	2.92	1.40	1.32
5	M	503	BPH	O2D-CED	-2.88	1.38	1.45
6	M	504	U10	C8-C9	2.83	1.39	1.33
6	M	504	U10	C23-C24	2.80	1.39	1.33
6	L	504	U10	C21-C19	2.79	1.57	1.51
6	M	504	U10	C38-C39	2.70	1.40	1.32
4	M	502	BCL	C2-C3	2.69	1.39	1.33
4	M	501	BCL	CAA-C2A	2.64	1.59	1.54
4	L	501	BCL	C1B-NB	2.64	1.37	1.35
4	L	501	BCL	C2-C3	2.61	1.39	1.33
9	M	600	SPN	C21-C22	-2.57	1.39	1.52
5	L	503	BPH	C2-C3	2.54	1.39	1.33
5	L	503	BPH	CAA-C2A	2.52	1.58	1.54
4	L	501	BCL	CMB-C2B	-2.52	1.46	1.51
6	M	504	U10	O4-C4M	-2.51	1.39	1.45
4	L	501	BCL	O2A-CGA	2.50	1.40	1.33
6	M	504	U10	C30-C29	2.46	1.57	1.50
5	M	503	BPH	C15-C13	2.45	1.65	1.52
6	M	504	U10	C13-C14	2.45	1.38	1.33
5	L	503	BPH	O2D-CED	-2.44	1.39	1.45
6	L	504	U10	C7-C8	-2.43	1.47	1.50
4	M	501	BCL	CMA-C3A	2.42	1.58	1.53
6	M	504	U10	C18-C19	2.39	1.38	1.33
6	L	504	U10	C18-C19	2.39	1.38	1.33
5	L	503	BPH	O1D-CGD	2.38	1.27	1.21
5	M	503	BPH	C2-C3	2.36	1.38	1.33
6	M	504	U10	O2-C2	2.36	1.28	1.23
6	M	504	U10	C15-C14	2.36	1.56	1.50
4	M	502	BCL	O2D-CED	-2.35	1.39	1.45
5	M	503	BPH	C2C-C3C	-2.34	1.47	1.54
6	M	504	U10	O3-C3M	-2.32	1.39	1.45
4	M	501	BCL	C2C-C3C	-2.32	1.48	1.54
4	M	501	BCL	C2-C3	2.32	1.38	1.33
6	L	504	U10	C10-C9	2.31	1.56	1.50
4	L	501	BCL	C3D-C2D	-2.28	1.35	1.39
6	L	504	U10	C16-C14	2.26	1.56	1.51
4	M	501	BCL	C3B-C2B	-2.25	1.35	1.39
4	L	502	BCL	C4-C3	2.25	1.56	1.50
6	L	504	U10	C15-C14	2.24	1.56	1.50
6	M	504	U10	C7-C8	-2.23	1.47	1.50
4	L	502	BCL	CMC-C2C	-2.22	1.48	1.53

Continued on next page...

Continued from previous page...

Mol	Chain	Res	Type	Atoms	Z	Observed(Å)	Ideal(Å)
9	M	600	SPN	C16-C15	-2.20	1.39	1.51
5	M	503	BPH	CAA-C2A	2.19	1.58	1.54
6	L	504	U10	C35-C34	2.16	1.56	1.50
4	M	502	BCL	O2A-CGA	2.14	1.39	1.33
4	L	502	BCL	O2D-CGD	2.12	1.38	1.33
5	L	503	BPH	C4C-NC	2.09	1.41	1.37
6	M	504	U10	C40-C39	2.05	1.55	1.50
5	L	503	BPH	C4A-NA	2.05	1.40	1.35
4	L	502	BCL	C3D-C2D	-2.04	1.35	1.39
4	M	502	BCL	OBD-CAD	2.02	1.25	1.22
5	L	503	BPH	C5-C3	2.01	1.55	1.51
4	L	501	BCL	O2D-CED	-2.01	1.40	1.45
4	M	502	BCL	C3D-C2D	-2.01	1.35	1.39
4	L	501	BCL	C3B-CAB	-2.01	1.43	1.49

All (147) bond angle outliers are listed below:

Mol	Chain	Res	Type	Atoms	Z	Observed(°)	Ideal(°)
4	L	502	BCL	C4B-C3B-CAB	-11.09	105.71	127.13
4	L	502	BCL	OBB-CAB-C3B	9.35	136.58	119.99
4	L	501	BCL	C4A-NA-C1A	8.52	110.54	106.71
5	M	503	BPH	O2D-CGD-CBD	8.34	126.08	111.27
4	L	502	BCL	C4A-NA-C1A	8.27	110.42	106.71
4	L	501	BCL	O2D-CGD-CBD	7.92	125.35	111.27
5	L	503	BPH	O2D-CGD-CBD	7.88	125.26	111.27
4	M	501	BCL	C1-C2-C3	7.84	139.59	126.04
4	M	502	BCL	C4A-NA-C1A	7.82	110.22	106.71
9	M	600	SPN	CM6-C18-C17	7.01	127.06	115.27
4	L	502	BCL	C1C-NC-C4C	6.46	109.61	106.71
9	M	600	SPN	CM5-C13-C14	6.43	126.08	115.27
4	M	501	BCL	C4-C3-C5	-5.94	105.28	115.27
5	M	503	BPH	C1-C2-C3	5.91	136.27	126.04
4	M	501	BCL	OBB-CAB-C3B	5.87	130.41	119.99
4	M	502	BCL	C1C-NC-C4C	5.76	109.30	106.71
4	M	502	BCL	O2D-CGD-CBD	5.70	121.39	111.27
4	L	501	BCL	O1D-CGD-CBD	-5.50	113.23	124.48
4	L	501	BCL	C1C-NC-C4C	5.45	109.16	106.71
4	L	501	BCL	OBB-CAB-C3B	5.26	129.32	119.99
9	M	600	SPN	C6-C5-C4	-5.15	110.70	121.12
5	L	503	BPH	O2A-CGA-O1A	-5.10	110.71	123.59
4	L	502	BCL	O2D-CGD-CBD	4.95	120.06	111.27
9	M	600	SPN	C17-C18-C19	-4.88	111.23	121.12

Continued on next page...

Continued from previous page...

Mol	Chain	Res	Type	Atoms	Z	Observed(°)	Ideal(°)
4	M	501	BCL	OBD-CAD-CBD	-4.73	119.14	125.89
4	M	501	BCL	O2A-CGA-O1A	-4.65	111.86	123.59
5	M	503	BPH	C4A-NA-C1A	4.65	111.89	108.14
4	M	501	BCL	O2A-CGA-CBA	4.63	126.43	111.91
9	M	600	SPN	C3-C4-C5	-4.63	119.09	126.79
4	M	501	BCL	O2D-CGD-CBD	4.58	119.41	111.27
5	L	503	BPH	O2D-CGD-O1D	-4.54	114.95	123.84
4	M	501	BCL	C4A-NA-C1A	4.53	108.74	106.71
4	M	501	BCL	C4D-C3D-CAD	-4.48	105.97	108.47
4	L	501	BCL	OBB-CAB-CBB	-4.39	110.28	120.17
5	M	503	BPH	C16-C15-C13	4.36	130.00	115.92
9	M	600	SPN	CM7-C22-C21	4.25	126.67	111.29
4	L	502	BCL	OBB-CAB-CBB	-4.11	110.92	120.17
5	M	503	BPH	O2D-CGD-O1D	-4.02	115.98	123.84
4	M	501	BCL	C1C-NC-C4C	4.02	108.51	106.71
9	M	600	SPN	C20-C19-C18	-3.98	118.07	127.66
4	M	501	BCL	CAA-C2A-C3A	-3.93	102.01	112.78
4	M	501	BCL	C5-C3-C2	3.91	129.03	121.12
9	M	600	SPN	C10-C9-C8	-3.88	113.26	121.12
9	M	600	SPN	CM4-C9-C10	3.86	121.77	115.27
9	M	600	SPN	C7-C8-C9	-3.81	118.49	127.66
5	M	503	BPH	CED-O2D-CGD	3.78	124.48	115.94
4	M	502	BCL	O1D-CGD-CBD	-3.77	116.77	124.48
9	M	600	SPN	C11-C12-C13	-3.76	118.61	127.66
5	L	503	BPH	OBD-CAD-CBD	-3.72	120.58	125.89
5	M	503	BPH	CBC-CAC-C3C	3.71	121.72	113.47
9	M	600	SPN	C14-C13-C12	-3.69	113.66	121.12
4	M	501	BCL	C4B-C3B-CAB	-3.65	120.08	127.13
4	M	501	BCL	CMB-C2B-C1B	-3.59	122.94	128.46
4	M	502	BCL	OBB-CAB-C3B	3.50	126.20	119.99
6	M	504	U10	C27-C28-C29	3.48	136.03	127.66
5	L	503	BPH	O2A-CGA-CBA	3.43	122.67	111.91
4	M	502	BCL	O2A-CGA-CBA	3.40	122.59	111.91
6	M	504	U10	C26-C27-C28	-3.24	101.24	111.88
5	M	503	BPH	CAA-C2A-C3A	-3.23	103.93	112.78
4	M	501	BCL	OBB-CAB-CBB	-3.23	112.91	120.17
5	M	503	BPH	O1D-CGD-CBD	-3.21	117.91	124.48
4	M	502	BCL	C4D-C3D-CAD	-3.21	106.68	108.47
4	M	501	BCL	O2D-CGD-O1D	-3.21	117.57	123.84
5	M	503	BPH	C6-C5-C3	3.17	121.76	113.45
4	L	502	BCL	O2A-CGA-CBA	3.17	121.85	111.91
4	L	502	BCL	OBD-CAD-CBD	-3.15	121.39	125.89

Continued on next page...

Continued from previous page...

Mol	Chain	Res	Type	Atoms	Z	Observed(°)	Ideal(°)
9	M	600	SPN	C16-C17-C18	3.07	121.52	113.45
5	M	503	BPH	C11-C12-C13	-3.06	106.03	115.92
4	M	501	BCL	C4B-CHC-C1C	-3.06	124.06	130.12
5	M	503	BPH	C17-C16-C15	3.04	127.22	113.24
4	L	502	BCL	CBB-CAB-C3B	-3.03	111.34	120.34
5	L	503	BPH	CAA-C2A-C3A	-3.03	104.48	112.78
4	L	501	BCL	CMB-C2B-C1B	-3.01	123.83	128.46
4	M	501	BCL	C2C-C3C-C4C	3.00	105.83	101.34
4	L	501	BCL	C4B-C3B-CAB	-2.98	121.37	127.13
5	M	503	BPH	C4D-CHA-C1A	-2.96	123.21	130.51
5	L	503	BPH	C4A-NA-C1A	2.95	110.53	108.14
4	M	502	BCL	CED-O2D-CGD	2.93	122.56	115.94
5	M	503	BPH	O2A-CGA-O1A	-2.91	116.25	123.59
4	L	502	BCL	O1D-CGD-CBD	-2.87	118.62	124.48
10	M	800	CDL	OB8-CB6-CB4	2.87	116.77	108.43
4	L	501	BCL	CMD-C2D-C3D	2.83	129.98	124.68
5	L	503	BPH	CMA-C3A-C4A	-2.83	103.94	112.36
5	M	503	BPH	C2C-C3C-C4C	2.83	105.57	101.34
4	L	501	BCL	O2A-CGA-CBA	2.81	120.72	111.91
4	M	501	BCL	CMA-C3A-C2A	-2.80	102.53	113.83
4	M	502	BCL	OBD-CAD-CBD	-2.78	121.92	125.89
6	L	504	U10	C7-C8-C9	2.77	131.40	126.79
5	M	503	BPH	CBB-CAB-C3B	-2.76	114.53	120.43
5	L	503	BPH	C4D-CHA-C1A	-2.75	123.73	130.51
5	L	503	BPH	CAC-C3C-C2C	2.71	121.04	114.26
4	L	502	BCL	CMB-C2B-C1B	-2.69	124.33	128.46
5	M	503	BPH	C3C-C2C-C1C	2.68	106.20	101.87
5	L	503	BPH	CED-O2D-CGD	2.64	121.92	115.94
4	M	501	BCL	CMD-C2D-C3D	2.61	129.57	124.68
10	M	800	CDL	CB6-CB4-CB3	-2.61	105.62	111.79
5	M	503	BPH	CHD-C4C-NC	-2.60	122.11	125.20
4	L	501	BCL	C4D-C3D-CAD	-2.57	107.04	108.47
4	L	502	BCL	C4D-C3D-CAD	-2.56	107.04	108.47
4	L	501	BCL	O2A-CGA-O1A	-2.50	117.27	123.59
5	L	503	BPH	C4-C3-C5	-2.50	111.07	115.27
9	M	600	SPN	CM3-C5-C6	2.48	119.44	115.27
5	M	503	BPH	C5-C3-C2	-2.45	116.15	121.12
4	M	502	BCL	C1-C2-C3	2.43	130.24	126.04
6	M	504	U10	C7-C8-C9	2.42	130.83	126.79
5	L	503	BPH	C3A-C4A-NA	-2.41	108.93	113.05
5	M	503	BPH	CMD-C2D-C3D	2.41	129.19	124.68
6	M	504	U10	C25-C24-C26	-2.41	111.22	115.27

Continued on next page...

Continued from previous page...

Mol	Chain	Res	Type	Atoms	Z	Observed(°)	Ideal(°)
5	L	503	BPH	C3C-C2C-C1C	2.39	105.73	101.87
4	L	502	BCL	C1-C2-C3	2.39	130.17	126.04
5	L	503	BPH	CAA-C2A-C1A	-2.38	106.17	112.33
4	L	501	BCL	CAC-C3C-C4C	-2.38	107.31	112.58
5	M	503	BPH	CAA-C2A-C1A	-2.36	106.23	112.33
5	M	503	BPH	C14-C13-C12	2.33	119.74	111.29
4	L	502	BCL	CED-O2D-CGD	2.33	121.20	115.94
5	L	503	BPH	O1D-CGD-CBD	-2.32	119.74	124.48
5	L	503	BPH	C2C-C3C-C4C	2.30	104.79	101.34
4	M	502	BCL	CMB-C2B-C1B	-2.29	124.94	128.46
4	M	501	BCL	C1B-CHB-C4A	-2.29	125.58	130.12
5	M	503	BPH	OBD-CAD-CBD	-2.28	122.64	125.89
5	L	503	BPH	C2A-C3A-C4A	2.26	105.80	101.34
9	M	600	SPN	C15-C16-C17	2.25	121.29	113.19
5	L	503	BPH	C3A-C4A-CHB	2.23	125.68	121.83
10	M	800	CDL	OA8-CA7-OA9	-2.23	117.97	123.59
6	L	504	U10	C3M-O3-C3	2.23	124.35	116.47
4	M	502	BCL	C3A-C2A-C1A	2.22	104.67	101.34
4	M	501	BCL	CHA-C1A-NA	-2.21	121.33	126.40
6	M	504	U10	C3M-O3-C3	2.20	124.26	116.47
5	M	503	BPH	C2A-C1A-NA	-2.20	109.34	111.86
9	M	600	SPN	C7-C6-C5	2.20	120.20	112.98
6	L	504	U10	C4M-O4-C4	2.16	124.14	116.47
5	M	503	BPH	C11-C10-C8	2.16	122.89	115.92
4	M	501	BCL	CMB-C2B-C3B	2.15	128.71	124.68
4	L	501	BCL	OBD-CAD-CBD	-2.15	122.83	125.89
5	M	503	BPH	C7-C6-C5	-2.14	107.54	113.36
5	M	503	BPH	CMA-C3A-C4A	-2.12	106.05	112.36
10	M	800	CDL	OB6-CB5-OB7	-2.12	118.58	123.70
4	M	501	BCL	OBD-CAD-C3D	2.10	131.46	127.98
4	M	501	BCL	O1D-CGD-CBD	-2.09	120.20	124.48
4	M	501	BCL	CMA-C3A-C4A	-2.08	106.19	111.77
5	M	503	BPH	C6-C7-C8	-2.07	109.23	115.92
10	M	800	CDL	CA6-CA4-CA3	-2.06	106.91	111.79
5	M	503	BPH	C4-C3-C5	2.05	118.72	115.27
4	M	502	BCL	O2A-CGA-O1A	-2.05	118.42	123.59
6	M	504	U10	C31-C29-C28	-2.04	116.98	121.12
4	M	501	BCL	C3C-C2C-C1C	2.03	105.15	101.87
6	M	504	U10	C4M-O4-C4	2.03	123.66	116.47

All (4) chirality outliers are listed below:

Mol	Chain	Res	Type	Atom
4	L	501	BCL	C13
4	M	501	BCL	C13
4	M	501	BCL	C8
5	M	503	BPH	C8

All (146) torsion outliers are listed below:

Mol	Chain	Res	Type	Atoms
4	L	501	BCL	C2C-C3C-CAC-CBC
4	L	501	BCL	C4C-C3C-CAC-CBC
4	M	501	BCL	C1-C2-C3-C4
5	M	503	BPH	C4B-C3B-CAB-CBB
5	M	503	BPH	C4B-C3B-CAB-OB
5	M	503	BPH	C2B-C3B-CAB-CBB
5	M	503	BPH	C2B-C3B-CAB-OB
5	M	503	BPH	O2A-C1-C2-C3
5	M	503	BPH	C1-C2-C3-C4
5	M	503	BPH	C1-C2-C3-C5
6	L	504	U10	C23-C24-C26-C27
6	L	504	U10	C25-C24-C26-C27
6	L	504	U10	C35-C34-C36-C37
7	L	709	LDA	N1-C1-C2-C3
7	M	701	LDA	C2-C1-N1-O1
7	M	701	LDA	C2-C1-N1-CM1
7	M	701	LDA	C2-C1-N1-CM2
7	H	703	LDA	C2-C1-N1-O1
7	H	703	LDA	C2-C1-N1-CM1
9	M	600	SPN	C3-C4-C5-CM3
9	M	600	SPN	C11-C10-C9-CM4
9	M	600	SPN	C16-C17-C18-CM6
10	M	800	CDL	CA3-OA5-PA1-OA2
10	M	800	CDL	CA3-OA5-PA1-OA3
10	M	800	CDL	CA3-OA5-PA1-OA4
4	L	501	BCL	CBD-CGD-O2D-CED
4	L	501	BCL	O1D-CGD-O2D-CED
6	L	504	U10	C33-C34-C36-C37
9	M	600	SPN	C14-C15-C16-C17
4	M	501	BCL	C1-C2-C3-C5
7	L	709	LDA	C6-C7-C8-C9
5	M	503	BPH	C4-C3-C5-C6
9	M	600	SPN	CM5-C13-C14-C15
5	M	503	BPH	C2-C3-C5-C6
9	M	600	SPN	C4-C5-C6-C7

Continued on next page...

Continued from previous page...

Mol	Chain	Res	Type	Atoms
9	M	600	SPN	C11-C10-C9-C8
9	M	600	SPN	C12-C13-C14-C15
9	M	600	SPN	C16-C17-C18-C19
6	M	504	U10	C24-C26-C27-C28
4	M	502	BCL	C3-C5-C6-C7
9	M	600	SPN	C20-C21-C22-CM7
4	M	502	BCL	C13-C15-C16-C17
10	M	800	CDL	CB7-C71-C72-C73
4	M	501	BCL	C11-C12-C13-C15
4	M	501	BCL	C15-C16-C17-C18
6	L	504	U10	C29-C31-C32-C33
6	M	504	U10	C29-C31-C32-C33
4	M	502	BCL	C15-C16-C17-C18
4	L	502	BCL	C15-C16-C17-C18
6	M	504	U10	C30-C29-C31-C32
4	M	501	BCL	C10-C11-C12-C13
7	H	703	LDA	C7-C8-C9-C10
4	M	501	BCL	C4-C3-C5-C6
7	H	703	LDA	C6-C7-C8-C9
10	M	800	CDL	C79-C80-C81-C82
10	M	800	CDL	OA7-CA5-OA6-CA4
10	M	800	CDL	C11-CA5-OA6-CA4
10	M	800	CDL	C39-C40-C41-C42
10	M	800	CDL	C78-C79-C80-C81
10	M	800	CDL	C54-C55-C56-C57
7	L	709	LDA	C2-C3-C4-C5
10	M	800	CDL	C34-C35-C36-C37
6	M	504	U10	C28-C29-C31-C32
7	M	701	LDA	C7-C8-C9-C10
7	M	704	LDA	C3-C4-C5-C6
4	M	502	BCL	C6-C7-C8-C10
9	M	600	SPN	C24-C25-C26-CM8
6	M	504	U10	C14-C16-C17-C18
7	M	701	LDA	C1-C2-C3-C4
4	M	501	BCL	C2-C3-C5-C6
4	M	502	BCL	C6-C7-C8-C9
5	L	503	BPH	C8-C10-C11-C12
10	M	800	CDL	C36-C37-C38-C39
10	M	800	CDL	C80-C81-C82-C83
10	M	800	CDL	C52-C53-C54-C55
4	L	501	BCL	C15-C16-C17-C18
7	H	703	LDA	C11-C10-C9-C8

Continued on next page...

Continued from previous page...

Mol	Chain	Res	Type	Atoms
10	M	800	CDL	C21-C22-C23-C24
5	L	503	BPH	C4-C3-C5-C6
5	L	503	BPH	C2-C3-C5-C6
10	M	800	CDL	OA5-CA3-CA4-OA6
4	L	502	BCL	C11-C12-C13-C15
4	M	501	BCL	C11-C10-C8-C9
4	M	501	BCL	C11-C12-C13-C14
4	M	501	BCL	C3-C5-C6-C7
6	M	504	U10	C25-C24-C26-C27
6	M	504	U10	C35-C34-C36-C37
6	M	504	U10	C23-C24-C26-C27
9	M	600	SPN	C25-C26-C27-C28
7	M	701	LDA	C9-C10-C11-C12
7	M	701	LDA	C4-C5-C6-C7
10	M	800	CDL	C40-C41-C42-C43
10	M	800	CDL	C13-C14-C15-C16
5	L	503	BPH	O2A-C1-C2-C3
10	M	800	CDL	C11-C12-C13-C14
9	M	600	SPN	CM3-C5-C6-C7
10	M	800	CDL	C19-C20-C21-C22
6	L	504	U10	C14-C16-C17-C18
6	M	504	U10	C33-C34-C36-C37
5	M	503	BPH	C11-C12-C13-C14
5	M	503	BPH	C4C-C3C-CAC-CBC
10	M	800	CDL	C81-C82-C83-C84
5	M	503	BPH	C11-C12-C13-C15
9	M	600	SPN	C21-C22-C23-C24
10	M	800	CDL	CA3-CA4-CA6-OA8
4	L	501	BCL	CHA-CBD-CGD-O1D
4	L	501	BCL	CHA-CBD-CGD-O2D
5	M	503	BPH	C13-C15-C16-C17
4	L	502	BCL	C16-C17-C18-C20
10	M	800	CDL	OA5-CA3-CA4-CA6
5	M	503	BPH	C5-C6-C7-C8
10	M	800	CDL	C55-C56-C57-C58
4	L	501	BCL	C6-C7-C8-C10
4	M	501	BCL	C12-C13-C15-C16
10	M	800	CDL	CA5-C11-C12-C13
4	L	501	BCL	C6-C7-C8-C9
7	M	701	LDA	C5-C6-C7-C8
10	M	800	CDL	C33-C34-C35-C36
10	M	800	CDL	C20-C21-C22-C23

Continued on next page...

Continued from previous page...

Mol	Chain	Res	Type	Atoms
7	L	709	LDA	C4-C5-C6-C7
4	M	501	BCL	C11-C10-C8-C7
4	L	502	BCL	C11-C12-C13-C14
4	M	502	BCL	C10-C11-C12-C13
4	L	501	BCL	C11-C10-C8-C9
6	L	504	U10	C2-C3-O3-C3M
5	M	503	BPH	C8-C10-C11-C12
9	M	600	SPN	C2-C3-C4-C5
6	L	504	U10	C26-C27-C28-C29
6	L	504	U10	C12-C11-C9-C10
4	M	501	BCL	C14-C13-C15-C16
4	L	502	BCL	CAD-CBD-CGD-O2D
4	M	501	BCL	CAD-CBD-CGD-O2D
5	L	503	BPH	CAD-CBD-CGD-O2D
5	M	503	BPH	CAD-CBD-CGD-O2D
10	M	800	CDL	C72-C71-CB7-OB8
9	M	600	SPN	CM8-C26-C27-C28
6	M	504	U10	C5-C4-O4-C4M
4	M	501	BCL	CHA-CBD-CGD-O2D
10	M	800	CDL	C51-C52-C53-C54
10	M	800	CDL	C72-C71-CB7-OB9
9	M	600	SPN	C10-C11-C12-C13
9	M	600	SPN	C18-C19-C20-C21
7	M	704	LDA	C4-C5-C6-C7
4	L	502	BCL	O1A-CGA-O2A-C1
9	M	600	SPN	C6-C7-C8-C9
4	M	502	BCL	CAA-CBA-CGA-O2A

There are no ring outliers.

13 monomers are involved in 55 short contacts:

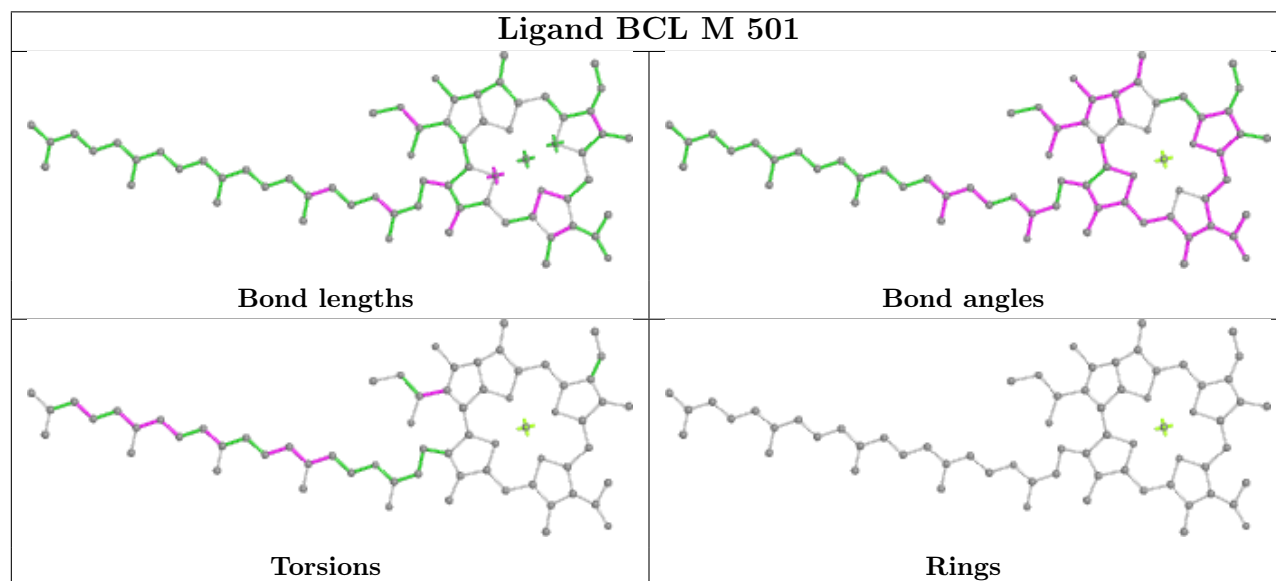
Mol	Chain	Res	Type	Clashes	Symm-Clashes
4	M	501	BCL	8	0
10	M	800	CDL	1	0
7	H	703	LDA	4	0
6	M	504	U10	6	0
9	M	600	SPN	1	0
5	M	503	BPH	1	0
5	L	503	BPH	2	0
4	M	502	BCL	11	0
4	L	502	BCL	11	0
4	L	501	BCL	6	0

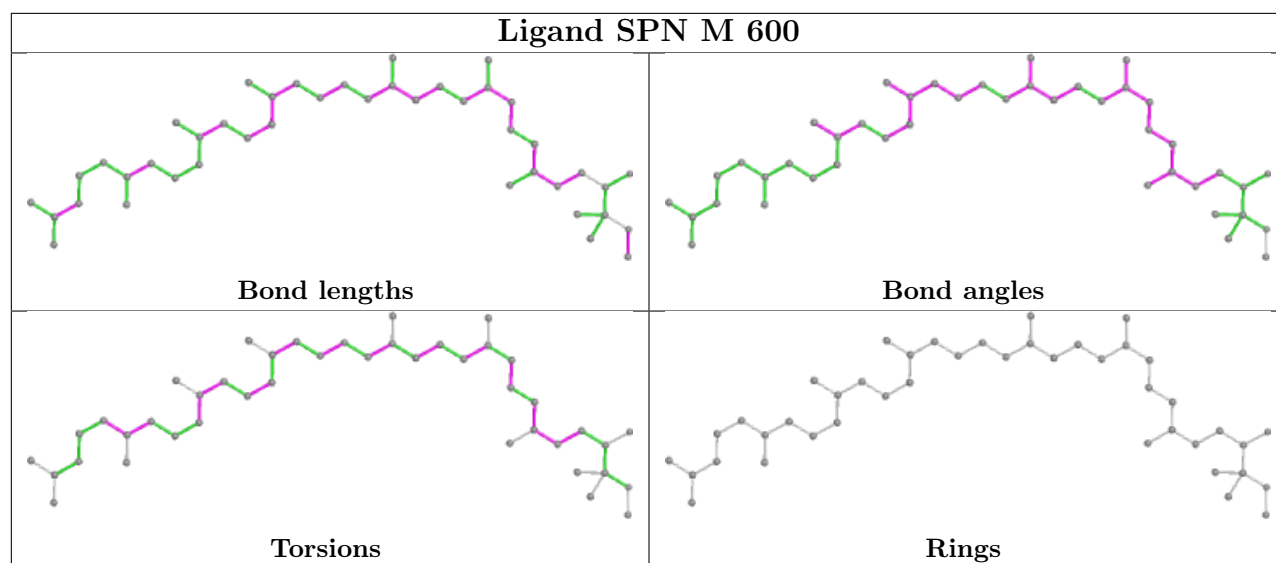
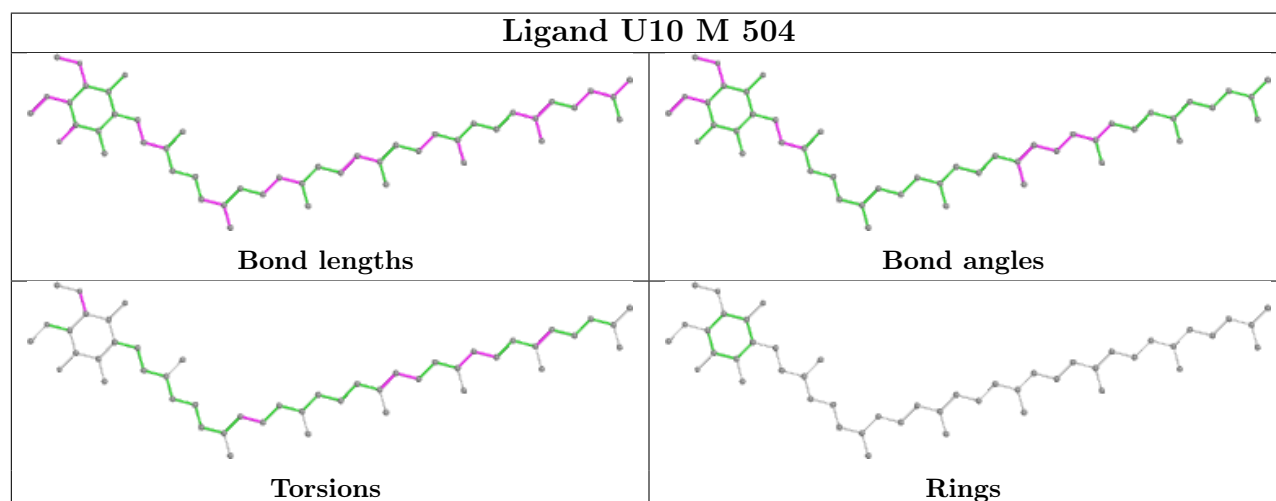
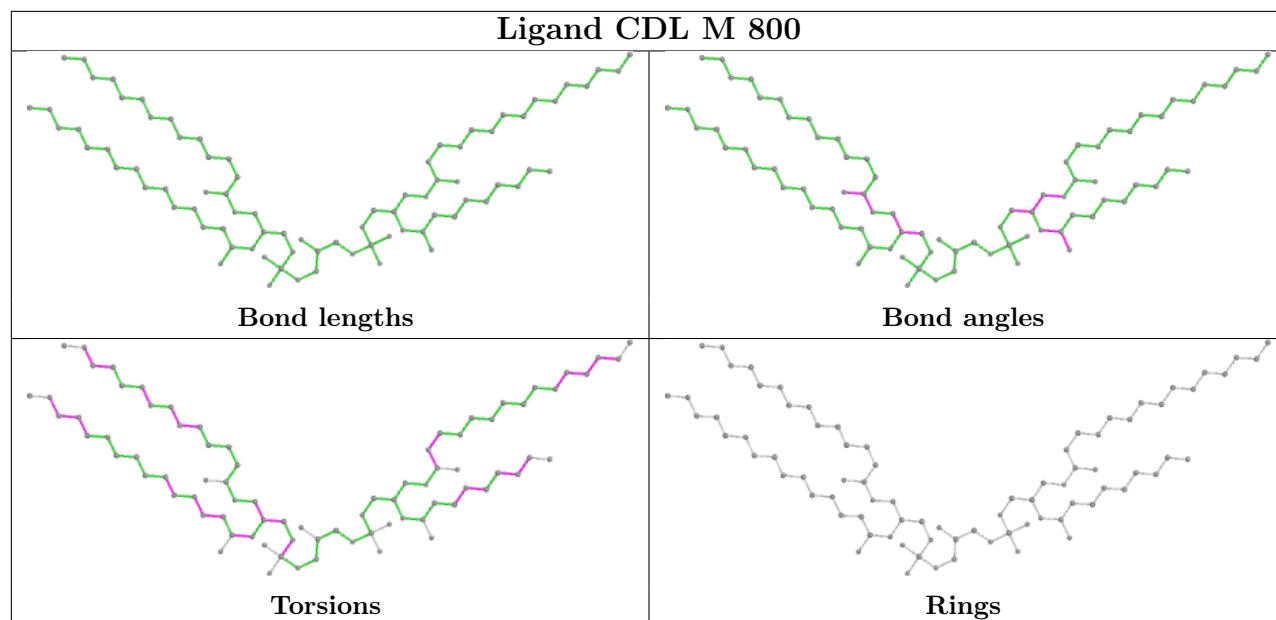
Continued on next page...

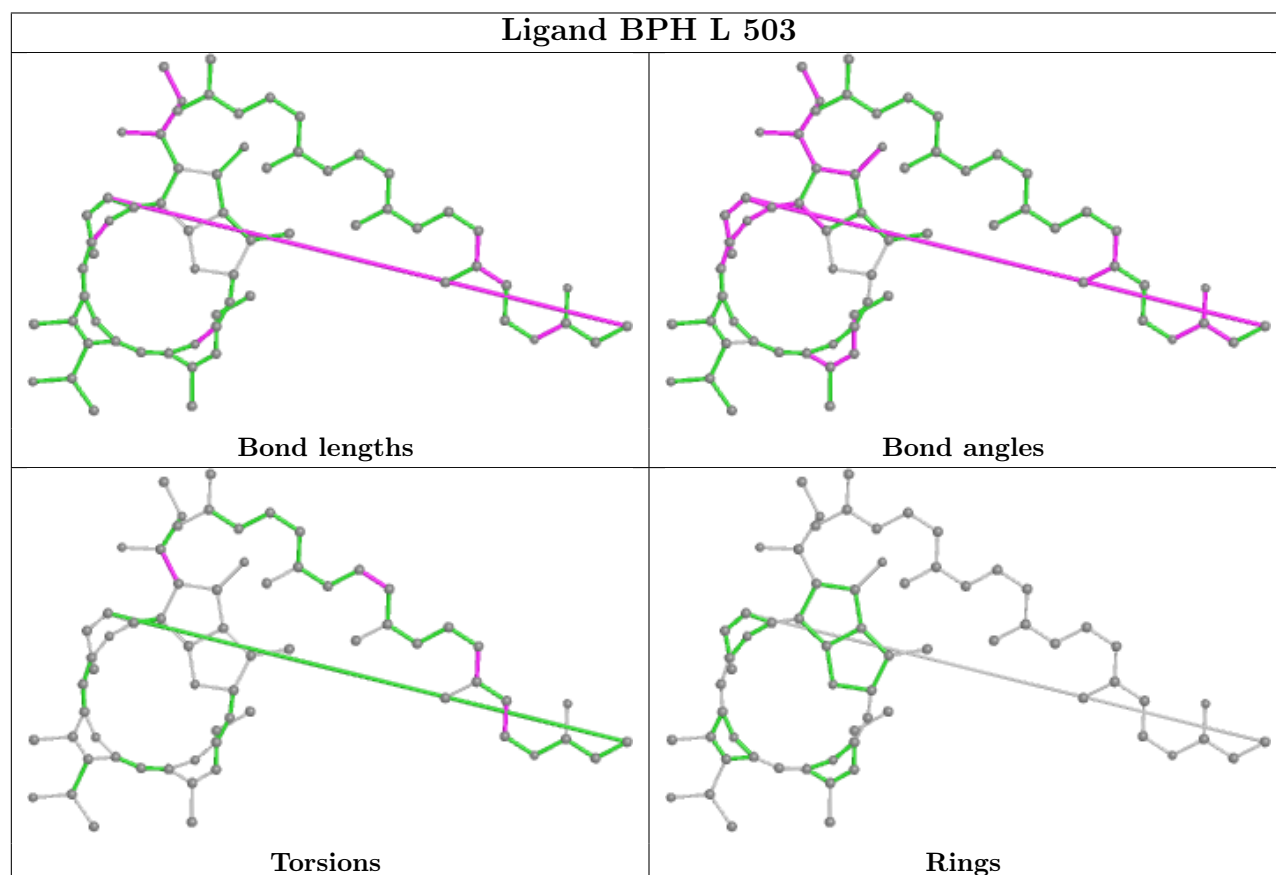
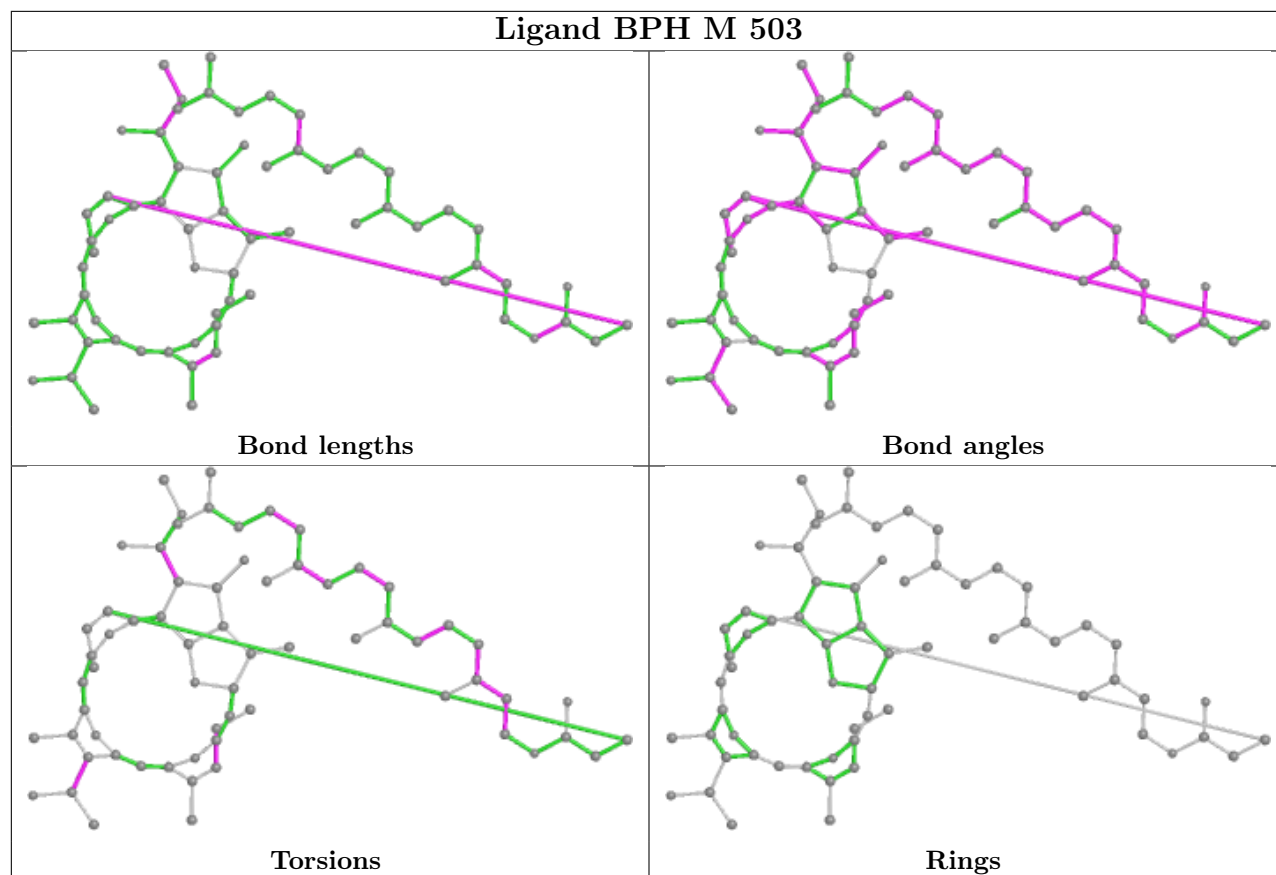
Continued from previous page...

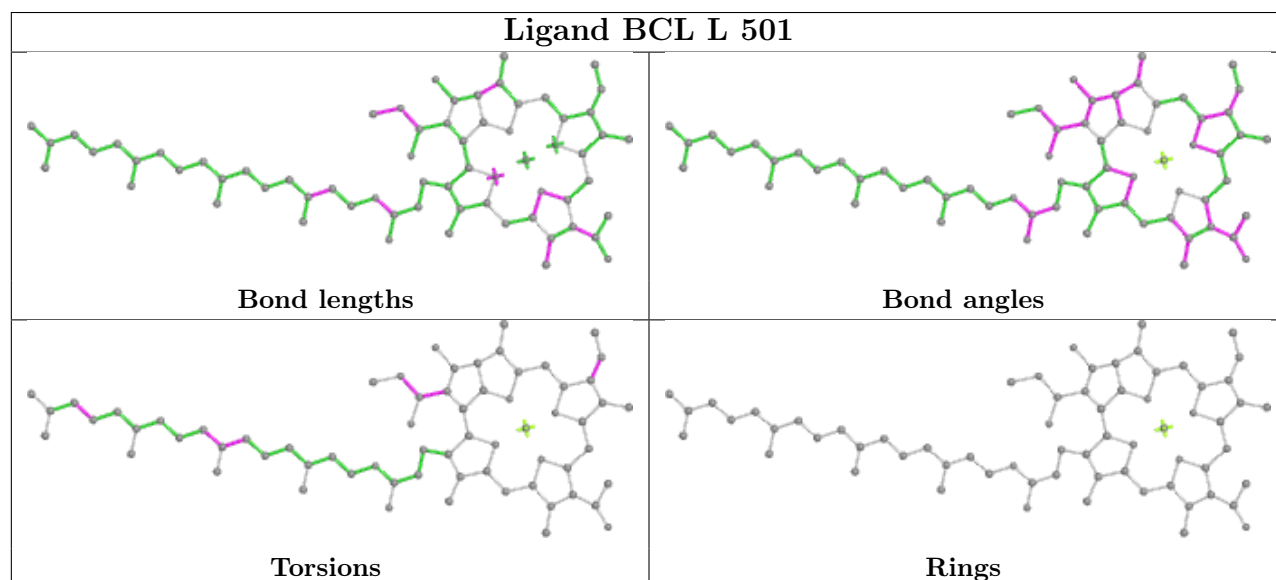
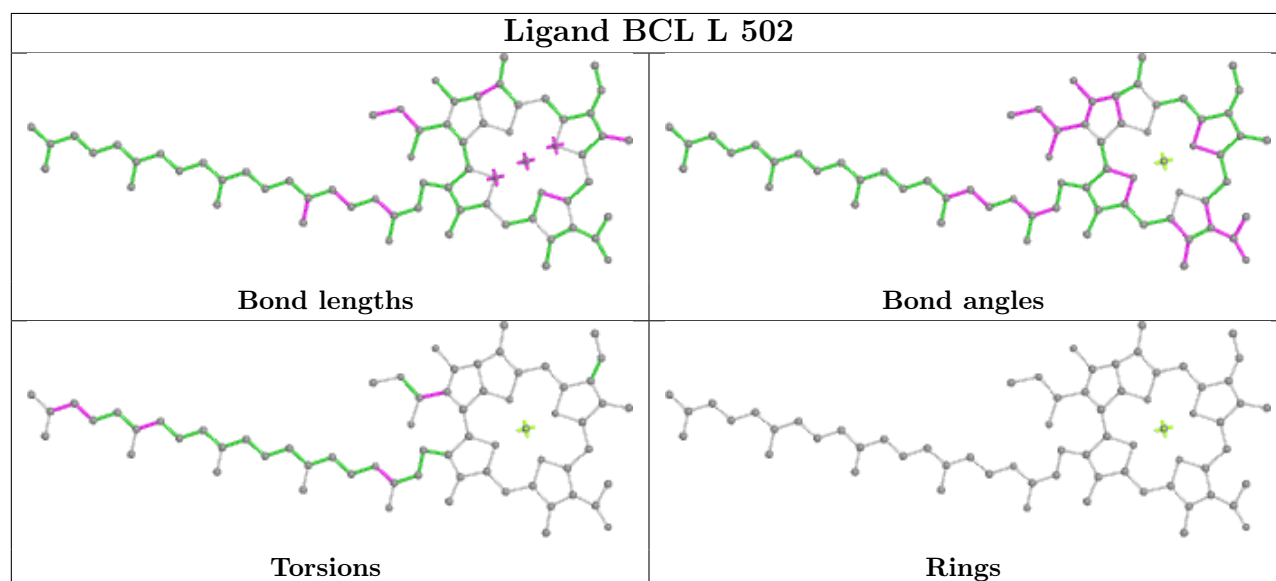
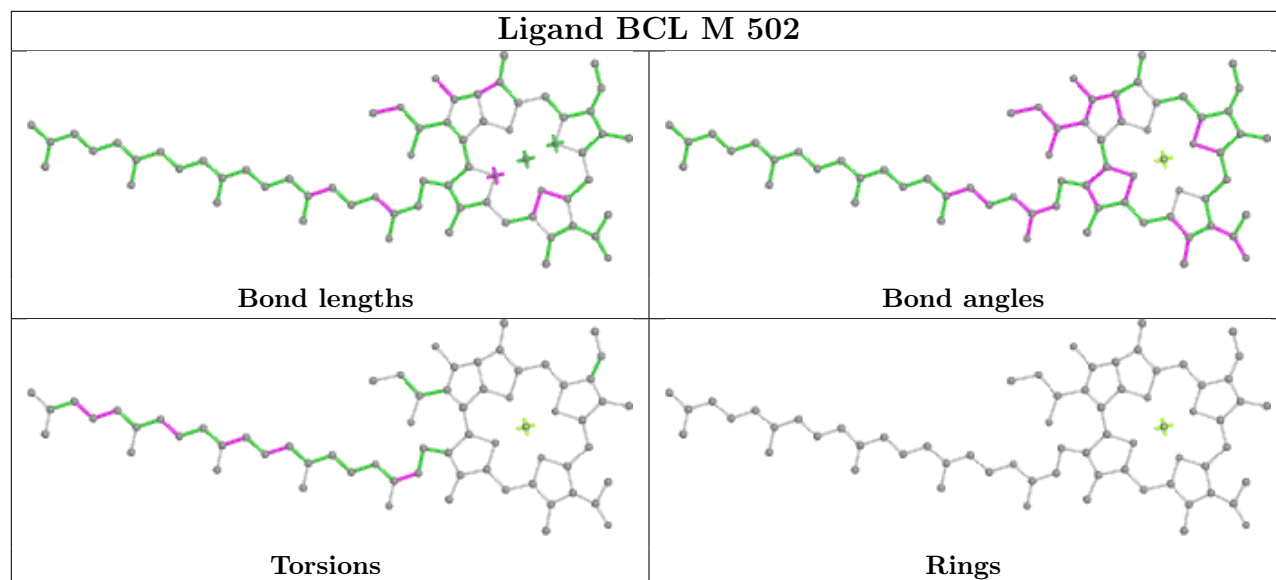
Mol	Chain	Res	Type	Clashes	Symm-Clashes
7	M	701	LDA	4	0
7	L	709	LDA	4	0
6	L	504	U10	6	0

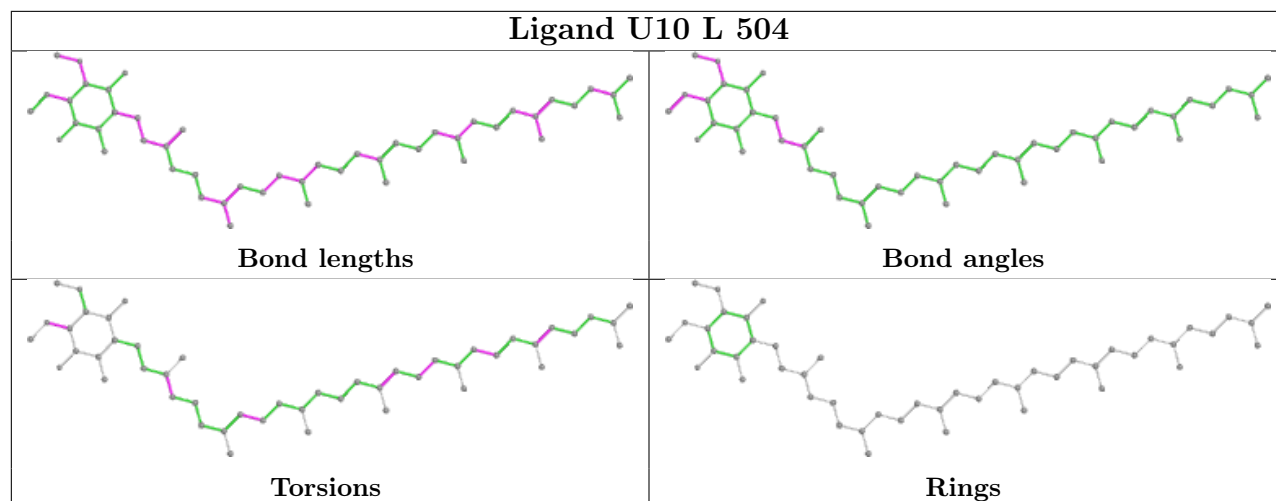
The following is a two-dimensional graphical depiction of Mogul quality analysis of bond lengths, bond angles, torsion angles, and ring geometry for all instances of the Ligand of Interest. In addition, ligands with molecular weight > 250 and outliers as shown on the validation Tables will also be included. For torsion angles, if less than 5% of the Mogul distribution of torsion angles is within 10 degrees of the torsion angle in question, then that torsion angle is considered an outlier. Any bond that is central to one or more torsion angles identified as an outlier by Mogul will be highlighted in the graph. For rings, the root-mean-square deviation (RMSD) between the ring in question and similar rings identified by Mogul is calculated over all ring torsion angles. If the average RMSD is greater than 60 degrees and the minimal RMSD between the ring in question and any Mogul-identified rings is also greater than 60 degrees, then that ring is considered an outlier. The outliers are highlighted in purple. The color gray indicates Mogul did not find sufficient equivalents in the CSD to analyse the geometry.











5.7 Other polymers [i](#)

There are no such residues in this entry.

5.8 Polymer linkage issues [i](#)

There are no chain breaks in this entry.

6 Fit of model and data [i](#)

6.1 Protein, DNA and RNA chains [i](#)

In the following table, the column labelled ‘#RSRZ> 2’ contains the number (and percentage) of RSRZ outliers, followed by percent RSRZ outliers for the chain as percentile scores relative to all X-ray entries and entries of similar resolution. The OWAB column contains the minimum, median, 95th percentile and maximum values of the occupancy-weighted average B-factor per residue. The column labelled ‘Q< 0.9’ lists the number of (and percentage) of residues with an average occupancy less than 0.9.

Mol	Chain	Analysed	<RSRZ>	#RSRZ>2	OWAB(Å ²)	Q<0.9
1	L	281/281 (100%)	-0.77	1 (0%) 92 79	25, 36, 70, 88	0
2	M	302/314 (96%)	-0.71	2 (0%) 87 69	20, 42, 79, 95	0
3	H	240/260 (92%)	-0.57	5 (2%) 63 34	27, 40, 62, 102	0
All	All	823/855 (96%)	-0.69	8 (0%) 82 59	20, 39, 72, 102	0

All (8) RSRZ outliers are listed below:

Mol	Chain	Res	Type	RSRZ
3	H	250	SER	5.9
3	H	249	LYS	4.2
3	H	246	PRO	2.7
1	L	281	GLY	2.7
2	M	82	PRO	2.4
3	H	247	LYS	2.2
3	H	245	ALA	2.2
2	M	1	ALA	2.2

6.2 Non-standard residues in protein, DNA, RNA chains [i](#)

There are no non-standard protein/DNA/RNA residues in this entry.

6.3 Carbohydrates [i](#)

There are no monosaccharides in this entry.

6.4 Ligands [i](#)

In the following table, the Atoms column lists the number of modelled atoms in the group and the number defined in the chemical component dictionary. The B-factors column lists the minimum,

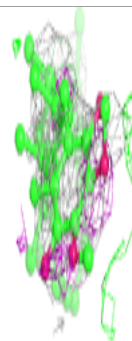
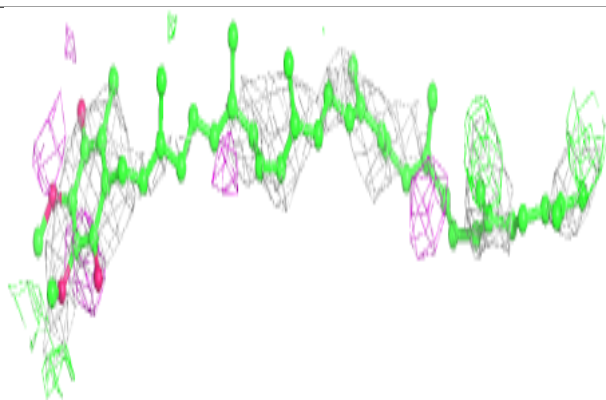
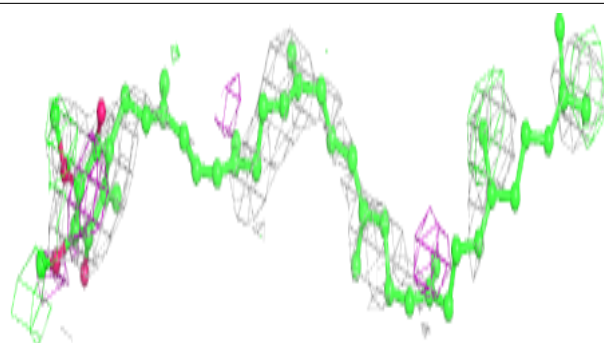
median, 95th percentile and maximum values of B factors of atoms in the group. The column labelled 'Q< 0.9' lists the number of atoms with occupancy less than 0.9.

Mol	Type	Chain	Res	Atoms	RSCC	RSR	B-factors(Å ²)	Q<0.9
7	LDA	M	704	16/16	0.61	0.34	75,89,107,108	0
6	U10	L	504	48/63	0.68	0.58	85,90,93,94	0
7	LDA	L	709	16/16	0.73	0.52	92,96,99,99	0
9	SPN	M	600	43/43	0.86	0.26	42,55,71,74	0
10	CDL	M	800	81/100	0.86	0.50	41,64,78,79	81
7	LDA	H	703	16/16	0.88	0.25	62,63,68,68	0
7	LDA	M	701	16/16	0.90	0.20	50,59,67,67	0
6	U10	M	504	48/63	0.94	0.18	29,36,67,68	0
4	BCL	M	501	66/66	0.95	0.20	24,34,99,100	0
5	BPH	M	503	65/65	0.96	0.15	31,42,61,66	10
4	BCL	L	501	66/66	0.97	0.15	19,25,50,52	0
4	BCL	M	502	66/66	0.97	0.17	24,30,58,65	0
5	BPH	L	503	65/65	0.97	0.16	19,30,42,44	0
4	BCL	L	502	66/66	0.98	0.14	22,26,47,50	0
8	FE	M	500	1/1	0.99	0.05	28,28,28,28	0

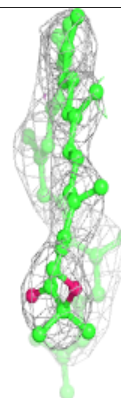
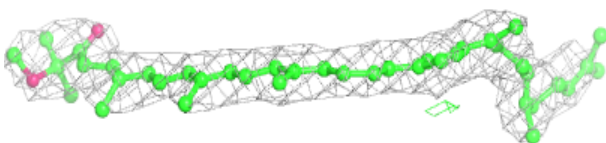
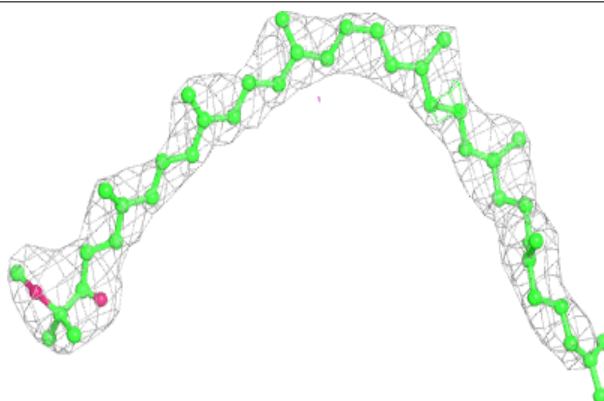
The following is a graphical depiction of the model fit to experimental electron density of all instances of the Ligand of Interest. In addition, ligands with molecular weight > 250 and outliers as shown on the geometry validation Tables will also be included. Each fit is shown from different orientation to approximate a three-dimensional view.

Electron density around U10 L 504:

$2mF_o-DF_c$ (at 0.7 rmsd) in gray
 mF_o-DF_c (at 3 rmsd) in purple (negative)
and green (positive)

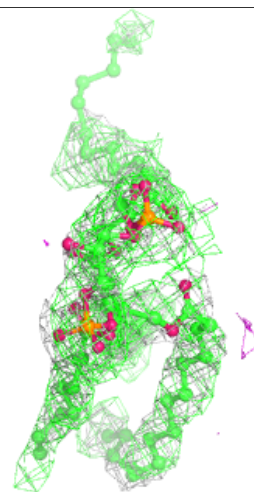
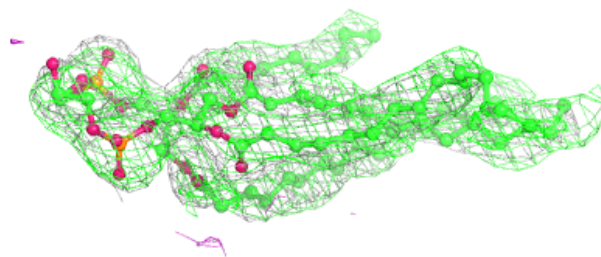
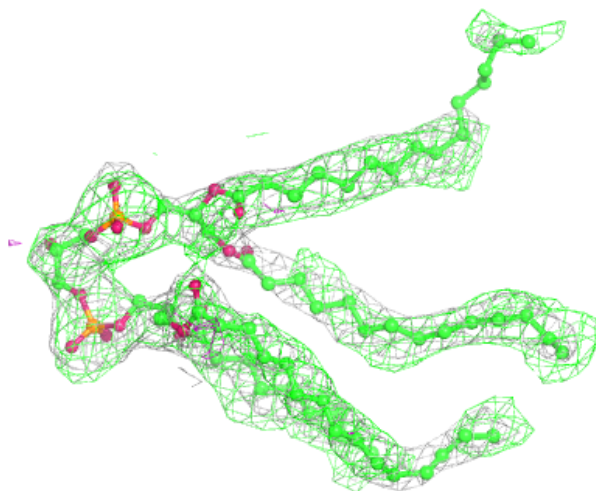
**Electron density around SPN M 600:**

$2mF_o-DF_c$ (at 0.7 rmsd) in gray
 mF_o-DF_c (at 3 rmsd) in purple (negative)
and green (positive)



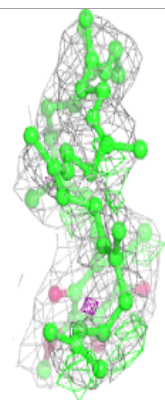
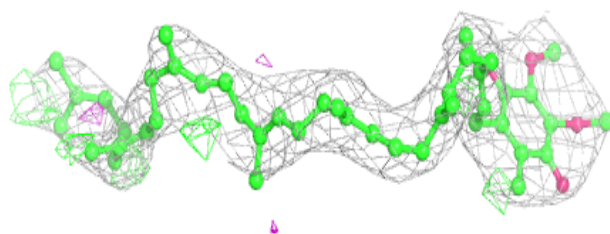
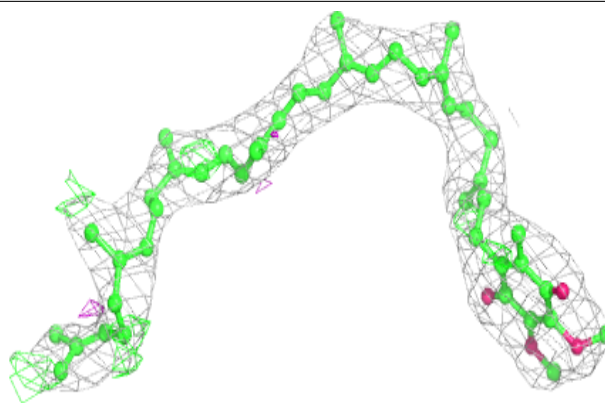
Electron density around CDL M 800:

$2mF_o-DF_c$ (at 0.7 rmsd) in gray
 mF_o-DF_c (at 3 rmsd) in purple (negative)
and green (positive)



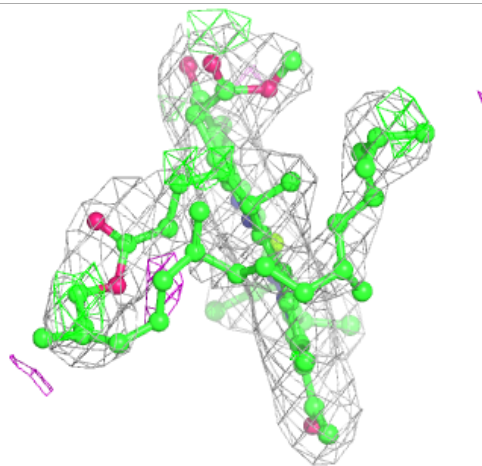
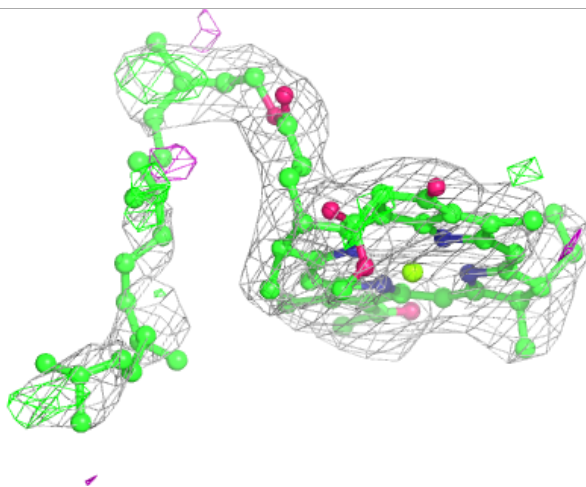
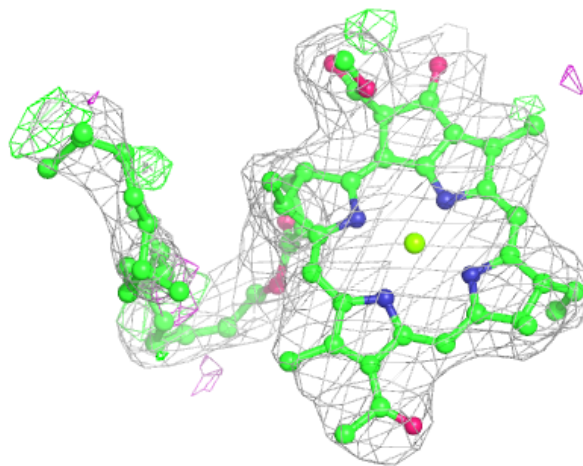
Electron density around U10 M 504:

$2mF_o-DF_c$ (at 0.7 rmsd) in gray
 mF_o-DF_c (at 3 rmsd) in purple (negative)
and green (positive)



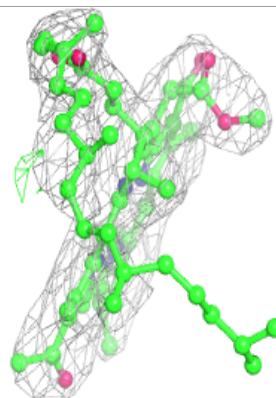
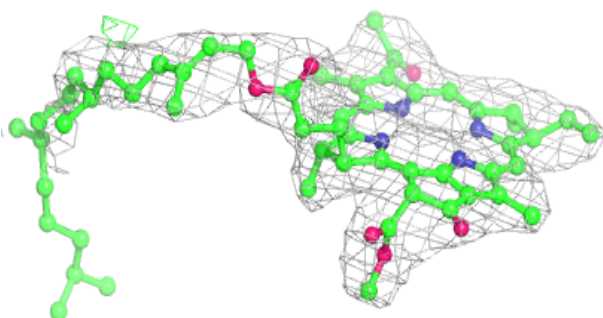
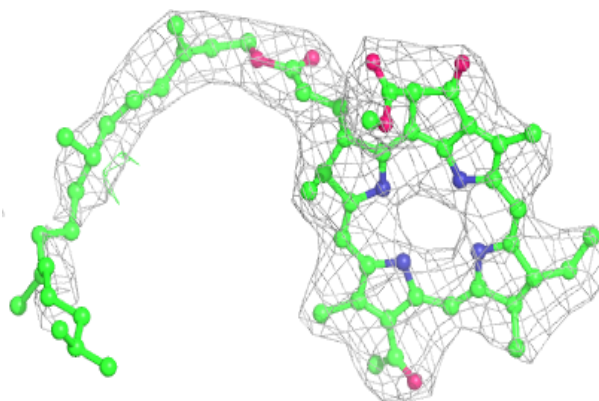
Electron density around BCL M 501:

$2mF_o-DF_c$ (at 0.7 rmsd) in gray
 mF_o-DF_c (at 3 rmsd) in purple (negative)
and green (positive)

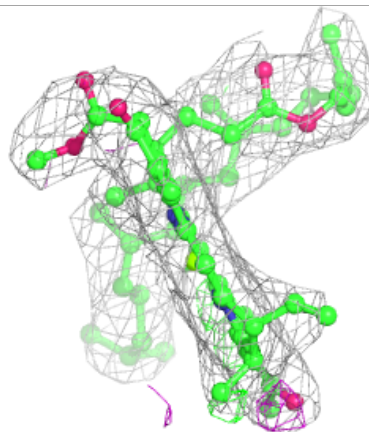
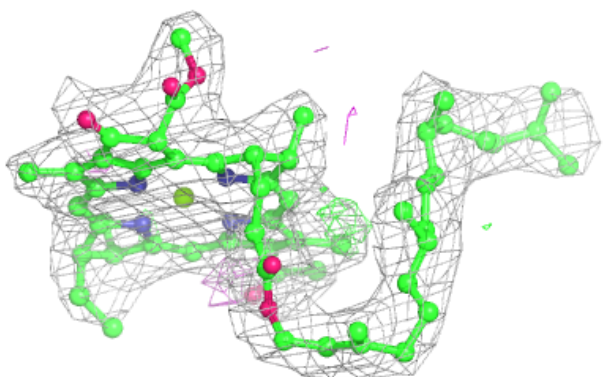
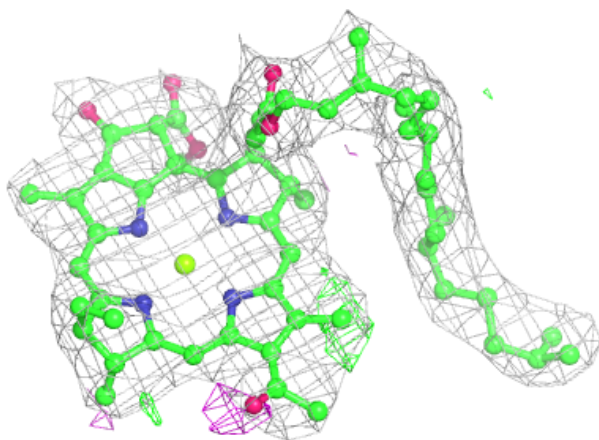


Electron density around BPH M 503:

$2mF_o-DF_c$ (at 0.7 rmsd) in gray
 mF_o-DF_c (at 3 rmsd) in purple (negative)
and green (positive)

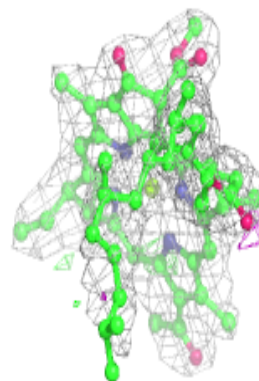
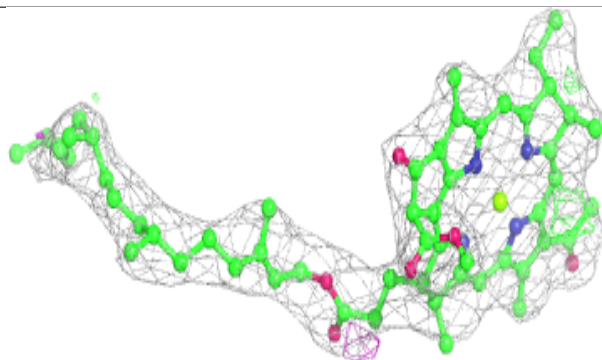
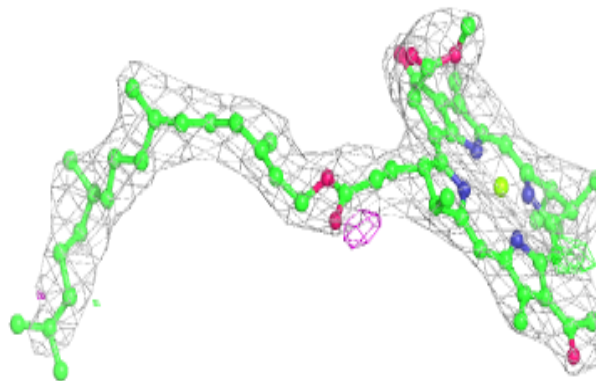
**Electron density around BCL L 501:**

$2mF_o-DF_c$ (at 0.7 rmsd) in gray
 mF_o-DF_c (at 3 rmsd) in purple (negative)
and green (positive)



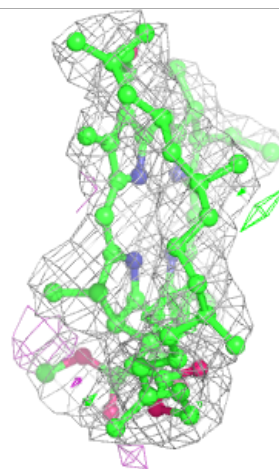
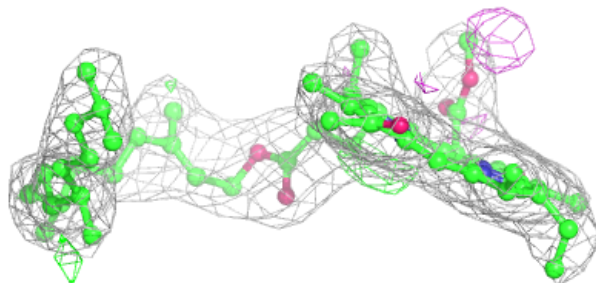
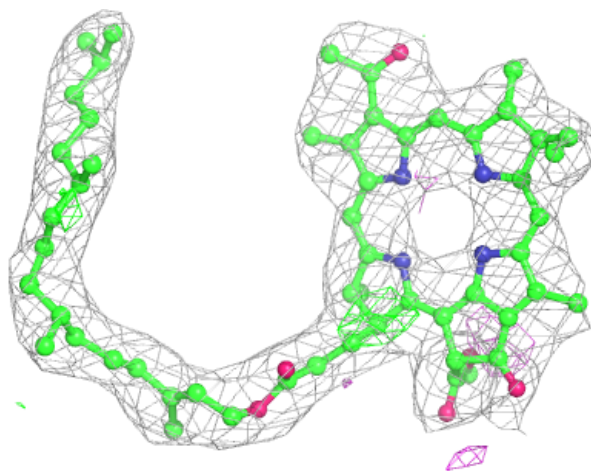
Electron density around BCL M 502:

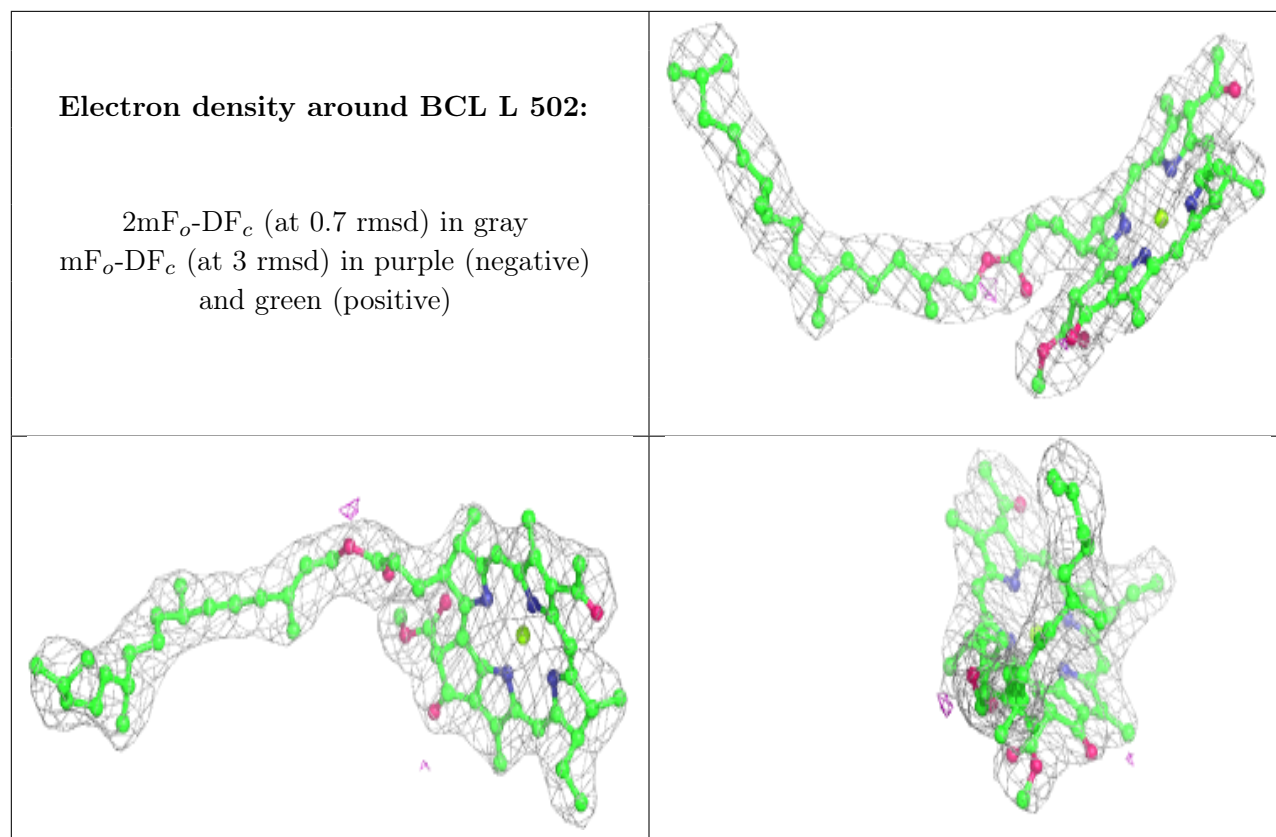
$2mF_o - DF_c$ (at 0.7 rmsd) in gray
 $mF_o - DF_c$ (at 3 rmsd) in purple (negative)
and green (positive)



Electron density around BPH L 503:

$2mF_o-DF_c$ (at 0.7 rmsd) in gray
 mF_o-DF_c (at 3 rmsd) in purple (negative)
and green (positive)





6.5 Other polymers [i](#)

There are no such residues in this entry.