



Full wwPDB X-ray Structure Validation Report ⓘ

May 25, 2020 – 02:50 am BST

PDB ID : 5DTJ
Title : Crystal Structure of dfp-inhibited mouse acetylcholinesterase in complex with the reactivator SP-134
Authors : Tran, T.H.; Tong, L.
Deposited on : 2015-09-18
Resolution : 2.71 Å(reported)

This is a Full wwPDB X-ray Structure Validation Report for a publicly released PDB entry.

We welcome your comments at validation@mail.wwpdb.org

A user guide is available at

<https://www.wwpdb.org/validation/2017/XrayValidationReportHelp>

with specific help available everywhere you see the ⓘ symbol.

The following versions of software and data (see [references ⓘ](#)) were used in the production of this report:

MolProbity : 4.02b-467
Mogul : 1.8.5 (274361), CSD as541be (2020)
Xtriage (Phenix) : 1.13
EDS : 2.11
buster-report : 1.1.7 (2018)
Percentile statistics : 20191225.v01 (using entries in the PDB archive December 25th 2019)
Refmac : 5.8.0158
CCP4 : 7.0.044 (Gargrove)
Ideal geometry (proteins) : Engh & Huber (2001)
Ideal geometry (DNA, RNA) : Parkinson et al. (1996)
Validation Pipeline (wwPDB-VP) : 2.11

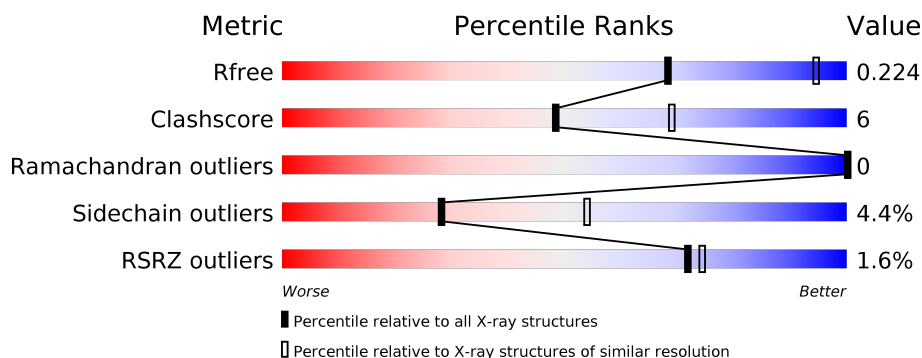
1 Overall quality at a glance

The following experimental techniques were used to determine the structure:

X-RAY DIFFRACTION

The reported resolution of this entry is 2.71 Å.

Percentile scores (ranging between 0-100) for global validation metrics of the entry are shown in the following graphic. The table shows the number of entries on which the scores are based.



Metric	Whole archive (#Entries)	Similar resolution (#Entries, resolution range(Å))
R_{free}	130704	3359 (2.74-2.70)
Clashscore	141614	3686 (2.74-2.70)
Ramachandran outliers	138981	3622 (2.74-2.70)
Sidechain outliers	138945	3623 (2.74-2.70)
RSRZ outliers	127900	3276 (2.74-2.70)

The table below summarises the geometric issues observed across the polymeric chains and their fit to the electron density. The red, orange, yellow and green segments on the lower bar indicate the fraction of residues that contain outliers for ≥ 3 , 2, 1 and 0 types of geometric quality criteria respectively. A grey segment represents the fraction of residues that are not modelled. The numeric value for each fraction is indicated below the corresponding segment, with a dot representing fractions $\leq 5\%$. The upper red bar (where present) indicates the fraction of residues that have poor fit to the electron density. The numeric value is given above the bar.

Mol	Chain	Length	Quality of chain
1	A	545	<div> <div>2%</div> <div> <div></div> <div>86%</div> <div>11%</div> <div>..</div> </div> </div>
1	B	545	<div> <div>%</div> <div> <div></div> <div>81%</div> <div>15%</div> <div>..</div> </div> </div>

The following table lists non-polymeric compounds, carbohydrate monomers and non-standard residues in protein, DNA, RNA chains that are outliers for geometric or electron-density-fit criteria:

Mol	Type	Chain	Res	Chirality	Geometry	Clashes	Electron density
2	5G8	B	602	-	-	X	-

2 Entry composition [i](#)

There are 2 unique types of molecules in this entry. The entry contains 8439 atoms, of which 0 are hydrogens and 0 are deuteriums.

In the tables below, the ZeroOcc column contains the number of atoms modelled with zero occupancy, the AltConf column contains the number of residues with at least one atom in alternate conformation and the Trace column contains the number of residues modelled with at most 2 atoms.

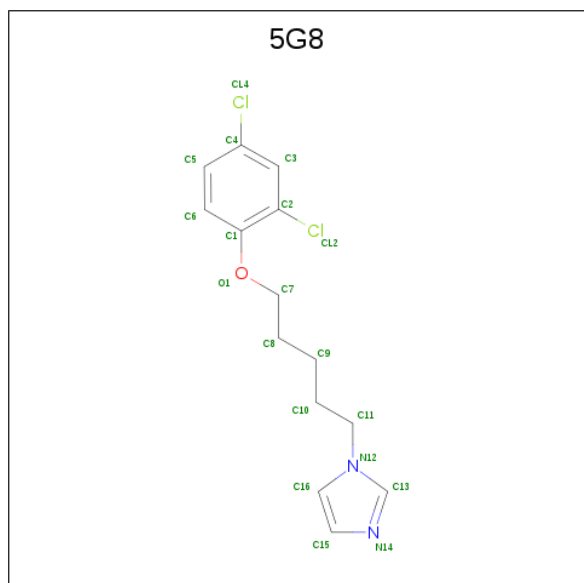
- Molecule 1 is a protein called Acetylcholinesterase.

Mol	Chain	Residues	Atoms						ZeroOcc	AltConf	Trace
1	A	537	Total	C	N	O	P	S	0	0	0
			4207	2698	728	765	1	15			
1	B	532	Total	C	N	O	P	S	0	0	0
			4166	2674	720	757	1	14			

There are 6 discrepancies between the modelled and reference sequences:

Chain	Residue	Modelled	Actual	Comment	Reference
A	-2	ASP	-	expression tag	UNP P21836
A	-1	PRO	-	expression tag	UNP P21836
A	0	MET	-	expression tag	UNP P21836
B	-2	ASP	-	expression tag	UNP P21836
B	-1	PRO	-	expression tag	UNP P21836
B	0	MET	-	expression tag	UNP P21836

- Molecule 2 is 1-[5-(2,4-dichlorophenoxy)pentyl]-1H-imidazole (three-letter code: 5G8) (formula: C₁₄H₁₆Cl₂N₂O).

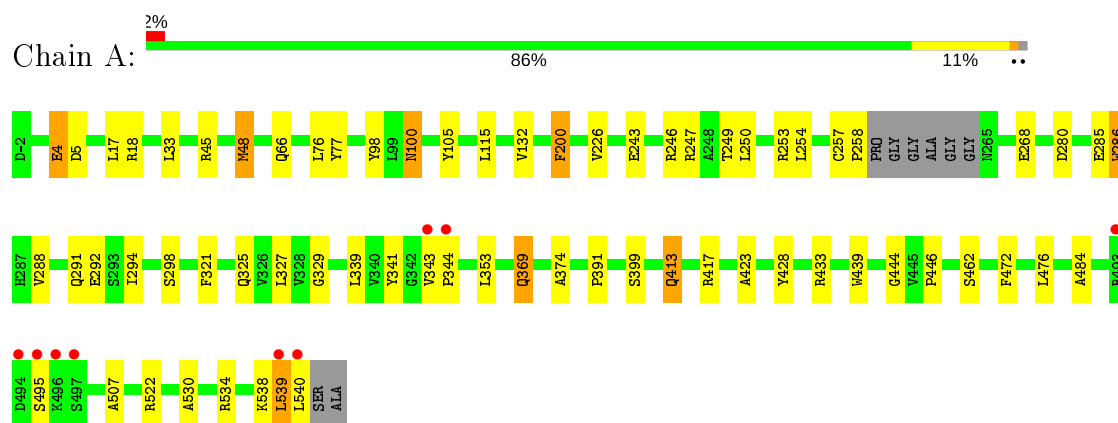


Mol	Chain	Residues	Atoms					ZeroOcc	AltConf
2	A	1	Total	C	Cl	O		0	0
			9	6	2	1			
2	A	1	Total	C	Cl	N	O	0	0
			19	14	2	2	1		
2	B	1	Total	C	Cl	N	O	0	0
			19	14	2	2	1		
2	B	1	Total	C	Cl	N	O	0	0
			19	14	2	2	1		

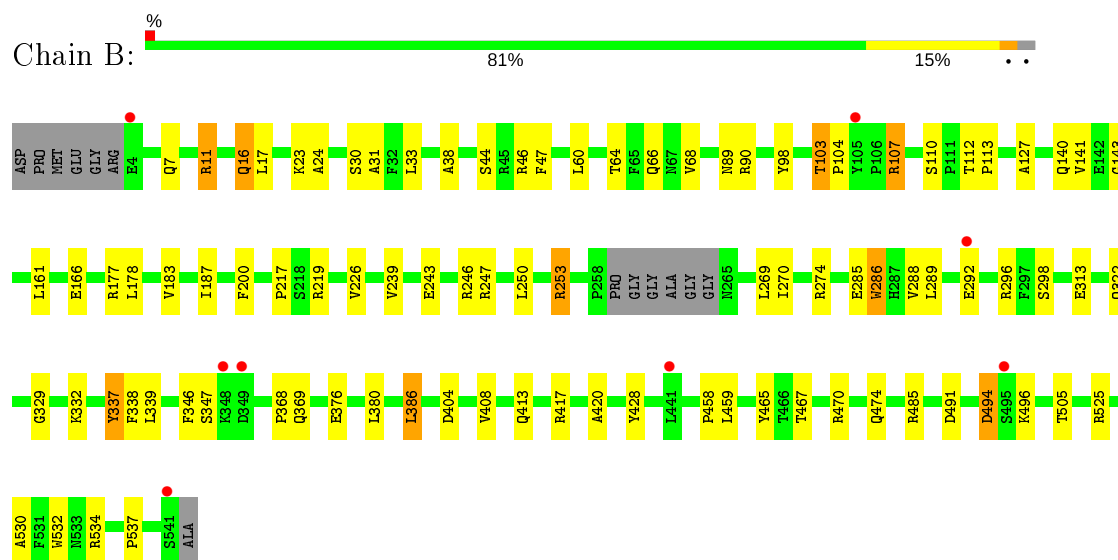
3 Residue-property plots [i](#)

These plots are drawn for all protein, RNA and DNA chains in the entry. The first graphic for a chain summarises the proportions of the various outlier classes displayed in the second graphic. The second graphic shows the sequence view annotated by issues in geometry and electron density. Residues are color-coded according to the number of geometric quality criteria for which they contain at least one outlier: green = 0, yellow = 1, orange = 2 and red = 3 or more. A red dot above a residue indicates a poor fit to the electron density ($RSRZ > 2$). Stretches of 2 or more consecutive residues without any outlier are shown as a green connector. Residues present in the sample, but not in the model, are shown in grey.

• Molecule 1: Acetylcholinesterase



• Molecule 1: Acetylcholinesterase



4 Data and refinement statistics

Property	Value	Source
Space group	P 21 21 21	Depositor
Cell constants a, b, c, α , β , γ	79.49Å 113.37Å 227.12Å 90.00° 90.00° 90.00°	Depositor
Resolution (Å)	46.20 – 2.71 49.35 – 2.71	Depositor EDS
% Data completeness (in resolution range)	99.4 (46.20-2.71) 93.0 (49.35-2.71)	Depositor EDS
R_{merge}	(Not available)	Depositor
R_{sym}	(Not available)	Depositor
$\langle I/\sigma(I) \rangle$ ¹	2.53 (at 2.73Å)	Xtriage
Refinement program	PHENIX 1.9_1685	Depositor
R, R_{free}	0.179 , 0.221 0.186 , 0.224	Depositor DCC
R_{free} test set	2000 reflections (3.55%)	wwPDB-VP
Wilson B-factor (Å ²)	50.1	Xtriage
Anisotropy	0.802	Xtriage
Bulk solvent k_{sol} (e/Å ³), B_{sol} (Å ²)	0.33 , 40.8	EDS
L-test for twinning ²	$\langle L \rangle = 0.49$, $\langle L^2 \rangle = 0.32$	Xtriage
Estimated twinning fraction	No twinning to report.	Xtriage
F_o, F_c correlation	0.95	EDS
Total number of atoms	8439	wwPDB-VP
Average B, all atoms (Å ²)	60.0	wwPDB-VP

Xtriage's analysis on translational NCS is as follows: *The largest off-origin peak in the Patterson function is 3.97% of the height of the origin peak. No significant pseudotranslation is detected.*

¹Intensities estimated from amplitudes.

²Theoretical values of $\langle |L| \rangle$, $\langle L^2 \rangle$ for acentric reflections are 0.5, 0.333 respectively for untwinned datasets, and 0.375, 0.2 for perfectly twinned datasets.

5 Model quality [i](#)

5.1 Standard geometry [i](#)

Bond lengths and bond angles in the following residue types are not validated in this section: MIS, 5G8

The Z score for a bond length (or angle) is the number of standard deviations the observed value is removed from the expected value. A bond length (or angle) with $|Z| > 5$ is considered an outlier worth inspection. RMSZ is the root-mean-square of all Z scores of the bond lengths (or angles).

Mol	Chain	Bond lengths		Bond angles	
		RMSZ	$\# Z > 5$	RMSZ	$\# Z > 5$
1	A	0.47	0/4318	0.61	0/5898
1	B	0.44	0/4276	0.59	1/5842 (0.0%)
All	All	0.45	0/8594	0.60	1/11740 (0.0%)

There are no bond length outliers.

All (1) bond angle outliers are listed below:

Mol	Chain	Res	Type	Atoms	Z	Observed(°)	Ideal(°)
1	B	337	TYR	C-N-CA	-5.17	108.77	121.70

There are no chirality outliers.

There are no planarity outliers.

5.2 Too-close contacts [i](#)

In the following table, the Non-H and H(model) columns list the number of non-hydrogen atoms and hydrogen atoms in the chain respectively. The H(added) column lists the number of hydrogen atoms added and optimized by MolProbity. The Clashes column lists the number of clashes within the asymmetric unit, whereas Symm-Clashes lists symmetry related clashes.

Mol	Chain	Non-H	H(model)	H(added)	Clashes	Symm-Clashes
1	A	4207	0	4098	36	0
1	B	4166	0	4058	61	0
2	A	28	0	19	2	0
2	B	38	0	32	11	0
All	All	8439	0	8207	100	0

The all-atom clashscore is defined as the number of clashes found per 1000 atoms (including hydrogen atoms). The all-atom clashscore for this structure is 6.

All (100) close contacts within the same asymmetric unit are listed below, sorted by their clash magnitude.

Atom-1	Atom-2	Interatomic distance (Å)	Clash overlap (Å)
1:B:247:ARG:CZ	1:B:289:LEU:HD21	2.04	0.87
1:B:337:TYR:CE1	2:B:602:5G8:H9	2.19	0.78
1:B:113:PRO:HG2	1:B:485:ARG:HG3	1.65	0.78
1:A:285:GLU:OE1	2:A:602:5G8:H15	1.87	0.74
1:A:374:ALA:HA	1:A:539:LEU:HD12	1.72	0.71
1:B:491:ASP:HB3	1:B:494:ASP:HA	1.73	0.68
1:B:337:TYR:CD1	2:B:602:5G8:H9	2.29	0.67
1:B:30:SER:HB2	1:B:103:THR:HG22	1.78	0.65
1:B:338:PHE:CE2	2:B:602:5G8:H7	2.36	0.61
1:B:288:VAL:HG13	1:B:289:LEU:HD13	1.82	0.61
1:B:413:GLN:O	1:B:417:ARG:HG2	2.01	0.60
1:A:5:ASP:OD2	1:A:105:TYR:OH	2.19	0.60
1:A:76:LEU:HD22	1:A:341:TYR:CE1	2.37	0.59
1:B:112:THR:HG21	1:B:143:GLY:O	2.03	0.59
1:A:4:GLU:CD	1:A:18:ARG:HD3	2.23	0.59
1:B:337:TYR:CE1	2:B:602:5G8:H5	2.37	0.59
1:B:166:GLU:HG2	1:B:270:ILE:HD13	1.85	0.58
1:B:338:PHE:HE2	2:B:602:5G8:H7	1.71	0.56
1:A:45:ARG:HA	1:A:48:MET:HG3	1.87	0.56
1:B:89:ASN:O	1:B:90:ARG:NH1	2.37	0.55
1:B:286:TRP:C	1:B:288:VAL:H	2.10	0.55
1:B:458:PRO:HA	1:B:465:TYR:CD2	2.42	0.54
1:B:243:GLU:OE2	1:B:246:ARG:NH1	2.40	0.54
1:B:494:ASP:N	1:B:494:ASP:OD1	2.31	0.54
1:B:404:ASP:HA	1:B:408:VAL:HB	1.89	0.53
1:A:507:ALA:HA	1:A:522:ARG:HH21	1.73	0.53
1:A:369:GLN:NE2	1:A:540:LEU:HD11	2.24	0.53
1:B:491:ASP:HB3	1:B:494:ASP:CA	2.39	0.53
1:B:247:ARG:NH2	1:B:289:LEU:HD21	2.23	0.52
1:B:337:TYR:CD1	2:B:602:5G8:H5	2.43	0.52
1:A:115:LEU:HD21	1:A:484:ALA:HB2	1.92	0.51
1:B:247:ARG:NH1	1:B:289:LEU:HD21	2.26	0.51
1:A:226:VAL:HG22	1:A:327:LEU:HB3	1.92	0.50
1:A:472:PHE:CZ	1:A:476:LEU:HD11	2.47	0.50
1:A:76:LEU:HD23	1:A:77:TYR:CE2	2.47	0.50
1:B:247:ARG:CD	1:B:289:LEU:HD11	2.42	0.50
1:B:161:LEU:HD12	1:B:270:ILE:HD11	1.93	0.49
1:B:11:ARG:NH2	1:B:16:GLN:OE1	2.44	0.49
1:B:285:GLU:OE1	2:B:601:5G8:H15	2.13	0.49
1:B:17:LEU:HD23	1:B:60:LEU:HB3	1.93	0.49

Continued on next page...

Continued from previous page...

Atom-1	Atom-2	Interatomic distance (Å)	Clash overlap (Å)
2:B:601:5G8:H3	2:B:602:5G8:CL2	2.49	0.49
1:B:7:GLN:OE1	1:B:107:ARG:N	2.29	0.49
1:B:66:GLN:HG3	1:B:98:TYR:CG	2.48	0.49
1:A:353:LEU:HB3	1:A:391:PRO:HB2	1.95	0.48
1:A:4:GLU:OE2	1:A:18:ARG:HD3	2.12	0.48
1:B:31:ALA:HB1	1:B:33:LEU:HD21	1.96	0.47
1:A:200:PHE:CB	1:A:226:VAL:HB	2.45	0.47
1:A:539:LEU:HD23	1:A:539:LEU:H	1.79	0.47
1:A:257:CYS:HA	1:A:258:PRO:HD2	1.73	0.47
1:B:103:THR:HG23	1:B:104:PRO:O	2.14	0.47
1:A:321:PHE:HB3	1:A:423:ALA:HB2	1.97	0.47
1:A:444:GLY:O	1:A:446:PRO:HD3	2.15	0.47
1:B:200:PHE:CB	1:B:226:VAL:HB	2.46	0.46
1:B:44:SER:HA	1:B:274:ARG:HD2	1.97	0.46
1:A:329:GLY:HA3	1:A:428:TYR:CE2	2.51	0.46
1:B:288:VAL:HG13	1:B:289:LEU:CD1	2.45	0.46
1:B:491:ASP:HB3	1:B:494:ASP:HB3	1.97	0.46
1:B:530:ALA:O	1:B:534:ARG:HB2	2.15	0.46
1:A:286:TRP:HA	1:A:286:TRP:CE3	2.52	0.45
1:B:329:GLY:HA3	1:B:428:TYR:CE2	2.51	0.45
1:A:339:LEU:HD11	1:A:399:SER:HA	1.98	0.45
1:B:183:VAL:HG13	1:B:187:ILE:HB	1.99	0.45
1:B:339:LEU:HD13	1:B:346:PHE:CE2	2.51	0.45
1:B:386:LEU:HA	1:B:386:LEU:HD23	1.81	0.45
1:A:243:GLU:OE2	1:A:246:ARG:NH1	2.50	0.45
1:B:68:VAL:HG23	1:B:90:ARG:HB2	1.98	0.45
1:B:24:ALA:HB3	1:B:140:GLN:HG3	1.99	0.44
1:B:337:TYR:CE1	2:B:602:5G8:C9	2.97	0.44
1:B:420:ALA:HB2	1:B:505:THR:HG21	1.98	0.44
1:B:292:GLU:HG2	1:B:368:PRO:HB3	1.99	0.43
1:B:177:ARG:CZ	1:B:217:PRO:HB2	2.48	0.43
1:A:413:GLN:O	1:A:417:ARG:HG2	2.18	0.43
1:B:46:ARG:HD3	1:B:47:PHE:CZ	2.54	0.43
2:A:601:5G8:CL2	2:A:602:5G8:H3	2.56	0.43
1:B:250:LEU:HD12	1:B:253:ARG:HG2	2.00	0.43
1:B:161:LEU:HD11	1:B:269:LEU:HD22	2.00	0.43
1:B:329:GLY:HA3	1:B:428:TYR:CZ	2.54	0.43
1:A:66:GLN:HG3	1:A:98:TYR:CD2	2.54	0.43
1:B:288:VAL:HG12	1:B:298:SER:OG	2.19	0.43
1:B:470:ARG:O	1:B:474:GLN:HG3	2.18	0.43
1:A:286:TRP:HA	1:A:286:TRP:HE3	1.84	0.42

Continued on next page...

Continued from previous page...

Atom-1	Atom-2	Interatomic distance (Å)	Clash overlap (Å)
1:A:433:ARG:NH2	1:A:439:TRP:O	2.52	0.42
1:A:249:THR:O	1:A:253:ARG:HG3	2.20	0.42
1:A:254:LEU:HD12	1:A:288:VAL:HG12	2.02	0.42
1:B:68:VAL:HG13	1:B:127:ALA:HB2	2.01	0.42
1:B:286:TRP:C	1:B:288:VAL:N	2.73	0.41
1:B:313:GLU:HG2	1:B:313:GLU:H	1.66	0.41
1:B:141:VAL:HG21	1:B:459:LEU:CD2	2.50	0.41
1:A:530:ALA:O	1:A:534:ARG:HB2	2.20	0.41
2:B:602:5G8:H4	2:B:602:5G8:H3	1.71	0.41
1:B:337:TYR:HE1	2:B:602:5G8:H5	1.84	0.41
1:A:243:GLU:O	1:A:247:ARG:HG3	2.20	0.41
1:B:376:GLU:O	1:B:380:LEU:HG	2.21	0.41
1:A:292:GLU:C	1:A:294:ILE:H	2.23	0.41
1:A:343:VAL:HA	1:A:344:PRO:HD3	1.86	0.41
1:B:532:TRP:O	1:B:537:PRO:HD3	2.20	0.41
1:A:33:LEU:HD23	1:A:100:ASN:HB3	2.03	0.40
1:B:38:ALA:HB2	1:B:178:LEU:HD23	2.04	0.40
1:A:200:PHE:HB2	1:A:226:VAL:HB	2.03	0.40
1:A:250:LEU:O	1:A:254:LEU:HG	2.21	0.40

There are no symmetry-related clashes.

5.3 Torsion angles [i](#)

5.3.1 Protein backbone [i](#)

In the following table, the Percentiles column shows the percent Ramachandran outliers of the chain as a percentile score with respect to all X-ray entries followed by that with respect to entries of similar resolution.

The Analysed column shows the number of residues for which the backbone conformation was analysed, and the total number of residues.

Mol	Chain	Analysed	Favoured	Allowed	Outliers	Percentiles	
1	A	532/545 (98%)	503 (94%)	29 (6%)	0	100	100
1	B	527/545 (97%)	496 (94%)	31 (6%)	0	100	100
All	All	1059/1090 (97%)	999 (94%)	60 (6%)	0	100	100

There are no Ramachandran outliers to report.

5.3.2 Protein sidechains ⓘ

In the following table, the Percentiles column shows the percent sidechain outliers of the chain as a percentile score with respect to all X-ray entries followed by that with respect to entries of similar resolution.

The Analysed column shows the number of residues for which the sidechain conformation was analysed, and the total number of residues.

Mol	Chain	Analysed	Rotameric	Outliers	Percentiles	
1	A	442/444 (100%)	424 (96%)	18 (4%)	30	57
1	B	438/444 (99%)	417 (95%)	21 (5%)	25	51
All	All	880/888 (99%)	841 (96%)	39 (4%)	28	54

All (39) residues with a non-rotameric sidechain are listed below:

Mol	Chain	Res	Type
1	A	4	GLU
1	A	17	LEU
1	A	48	MET
1	A	100	ASN
1	A	132	VAL
1	A	200	PHE
1	A	268	GLU
1	A	280	ASP
1	A	286	TRP
1	A	291	GLN
1	A	298	SER
1	A	325	GLN
1	A	369	GLN
1	A	413	GLN
1	A	462	SER
1	A	495	SER
1	A	538	LYS
1	A	539	LEU
1	B	11	ARG
1	B	16	GLN
1	B	23	LYS
1	B	64	THR
1	B	103	THR
1	B	107	ARG
1	B	110	SER
1	B	219	ARG
1	B	239	VAL

Continued on next page...

Continued from previous page...

Mol	Chain	Res	Type
1	B	253	ARG
1	B	286	TRP
1	B	296	ARG
1	B	322	GLN
1	B	332	LYS
1	B	347	SER
1	B	369	GLN
1	B	386	LEU
1	B	467	THR
1	B	494	ASP
1	B	496	LYS
1	B	525	ARG

Some sidechains can be flipped to improve hydrogen bonding and reduce clashes. There are no such sidechains identified.

5.3.3 RNA ⓘ

There are no RNA molecules in this entry.

5.4 Non-standard residues in protein, DNA, RNA chains ⓘ

2 non-standard protein/DNA/RNA residues are modelled in this entry.

In the following table, the Counts columns list the number of bonds (or angles) for which Mogul statistics could be retrieved, the number of bonds (or angles) that are observed in the model and the number of bonds (or angles) that are defined in the Chemical Component Dictionary. The Link column lists molecule types, if any, to which the group is linked. The Z score for a bond length (or angle) is the number of standard deviations the observed value is removed from the expected value. A bond length (or angle) with $|Z| > 2$ is considered an outlier worth inspection. RMSZ is the root-mean-square of all Z scores of the bond lengths (or angles).

Mol	Type	Chain	Res	Link	Bond lengths			Bond angles		
					Counts	RMSZ	$\# Z > 2$	Counts	RMSZ	$\# Z > 2$
1	MIS	B	203	1	11,12,13	0.72	0	10,16,18	3.59	2 (20%)
1	MIS	A	203	1	11,12,13	0.79	0	10,16,18	3.93	1 (10%)

In the following table, the Chirals column lists the number of chiral outliers, the number of chiral centers analysed, the number of these observed in the model and the number defined in the Chemical Component Dictionary. Similar counts are reported in the Torsion and Rings columns. '-' means no outliers of that kind were identified.

Mol	Type	Chain	Res	Link	Chirals	Torsions	Rings
1	MIS	B	203	1	-	4/10/13/15	-
1	MIS	A	203	1	-	4/10/13/15	-

There are no bond length outliers.

All (3) bond angle outliers are listed below:

Mol	Chain	Res	Type	Atoms	Z	Observed(°)	Ideal(°)
1	A	203	MIS	OG-CB-CA	12.08	119.90	108.14
1	B	203	MIS	OG-CB-CA	10.62	118.48	108.14
1	B	203	MIS	O3P-P-O2P	-2.24	101.06	109.47

There are no chirality outliers.

All (8) torsion outliers are listed below:

Mol	Chain	Res	Type	Atoms
1	B	203	MIS	CB-OG-P-O1P
1	B	203	MIS	CB-OG-P-O3P
1	A	203	MIS	CB-OG-P-O3P
1	B	203	MIS	C2-C1-O3P-P
1	A	203	MIS	C3-C1-O3P-P
1	A	203	MIS	CB-OG-P-O2P
1	B	203	MIS	N-CA-CB-OG
1	A	203	MIS	N-CA-CB-OG

There are no ring outliers.

No monomer is involved in short contacts.

5.5 Carbohydrates [i](#)

There are no carbohydrates in this entry.

5.6 Ligand geometry [i](#)

4 ligands are modelled in this entry.

In the following table, the Counts columns list the number of bonds (or angles) for which Mogul statistics could be retrieved, the number of bonds (or angles) that are observed in the model and the number of bonds (or angles) that are defined in the Chemical Component Dictionary. The Link column lists molecule types, if any, to which the group is linked. The Z score for a bond length (or angle) is the number of standard deviations the observed value is removed from the

expected value. A bond length (or angle) with $|Z| > 2$ is considered an outlier worth inspection. RMSZ is the root-mean-square of all Z scores of the bond lengths (or angles).

Mol	Type	Chain	Res	Link	Bond lengths			Bond angles		
					Counts	RMSZ	$\# Z > 2$	Counts	RMSZ	$\# Z > 2$
2	5G8	A	601	-	9,9,20	1.45	2 (22%)	12,12,25	1.49	2 (16%)
2	5G8	B	602	-	19,20,20	1.02	2 (10%)	23,25,25	1.09	1 (4%)
2	5G8	A	602	-	19,20,20	1.14	2 (10%)	23,25,25	1.03	1 (4%)
2	5G8	B	601	-	19,20,20	0.81	1 (5%)	23,25,25	1.00	1 (4%)

In the following table, the Chirals column lists the number of chiral outliers, the number of chiral centers analysed, the number of these observed in the model and the number defined in the Chemical Component Dictionary. Similar counts are reported in the Torsion and Rings columns. '-' means no outliers of that kind were identified.

Mol	Type	Chain	Res	Link	Chirals	Torsions	Rings
2	5G8	B	602	-	-	1/9/9/9	0/2/2/2
2	5G8	A	601	-	-	-	0/1/1/2
2	5G8	A	602	-	-	2/9/9/9	0/2/2/2
2	5G8	B	601	-	-	0/9/9/9	0/2/2/2

All (7) bond length outliers are listed below:

Mol	Chain	Res	Type	Atoms	Z	Observed(Å)	Ideal(Å)
2	A	602	5G8	C2-CL2	3.38	1.81	1.73
2	A	601	5G8	C1-C2	2.98	1.42	1.39
2	A	602	5G8	C16-N12	-2.67	1.32	1.37
2	B	602	5G8	C2-CL2	2.34	1.79	1.73
2	B	602	5G8	C16-N12	-2.28	1.33	1.37
2	B	601	5G8	C16-N12	-2.17	1.33	1.37
2	A	601	5G8	C2-CL2	2.08	1.78	1.73

All (5) bond angle outliers are listed below:

Mol	Chain	Res	Type	Atoms	Z	Observed(°)	Ideal(°)
2	B	602	5G8	C1-C2-CL2	3.52	123.56	119.43
2	A	601	5G8	C1-C2-CL2	2.65	124.50	119.53
2	A	601	5G8	C3-C2-C1	-2.58	119.42	120.91
2	B	601	5G8	C3-C2-CL2	2.31	122.22	118.49
2	A	602	5G8	C6-C1-C2	2.08	122.12	118.84

There are no chirality outliers.

All (3) torsion outliers are listed below:

Mol	Chain	Res	Type	Atoms
2	A	602	5G8	C10-C11-N12-C16
2	A	602	5G8	C10-C11-N12-C13
2	B	602	5G8	C8-C7-O1-C1

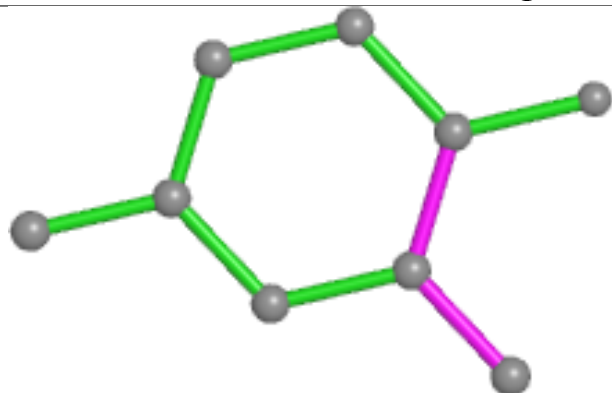
There are no ring outliers.

4 monomers are involved in 13 short contacts:

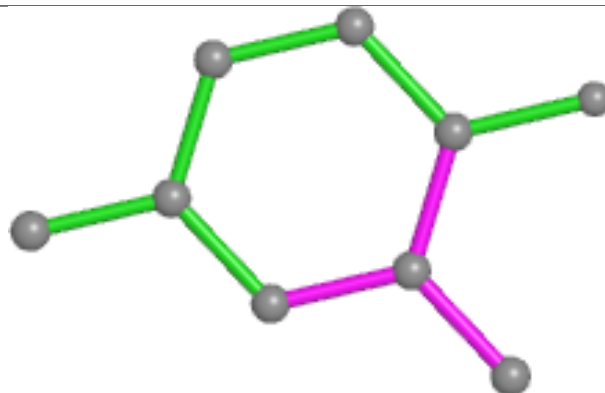
Mol	Chain	Res	Type	Clashes	Symm-Clashes
2	A	601	5G8	1	0
2	B	602	5G8	10	0
2	A	602	5G8	2	0
2	B	601	5G8	2	0

The following is a two-dimensional graphical depiction of Mogul quality analysis of bond lengths, bond angles, torsion angles, and ring geometry for all instances of the Ligand of Interest. In addition, ligands with molecular weight > 250 and outliers as shown on the validation Tables will also be included. For torsion angles, if less than 5% of the Mogul distribution of torsion angles is within 10 degrees of the torsion angle in question, then that torsion angle is considered an outlier. Any bond that is central to one or more torsion angles identified as an outlier by Mogul will be highlighted in the graph. For rings, the root-mean-square deviation (RMSD) between the ring in question and similar rings identified by Mogul is calculated over all ring torsion angles. If the average RMSD is greater than 60 degrees and the minimal RMSD between the ring in question and any Mogul-identified rings is also greater than 60 degrees, then that ring is considered an outlier. The outliers are highlighted in purple. The color gray indicates Mogul did not find sufficient equivalents in the CSD to analyse the geometry.

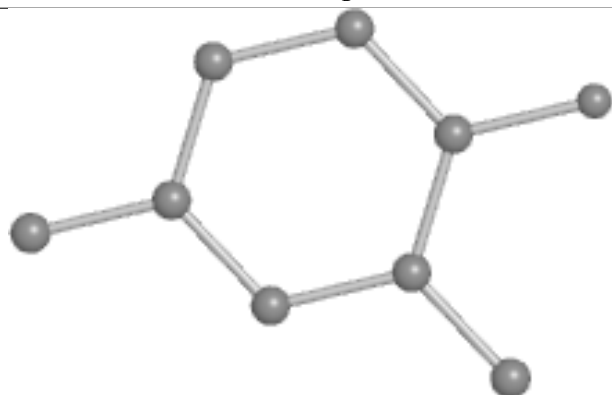
Ligand 5G8 A 601



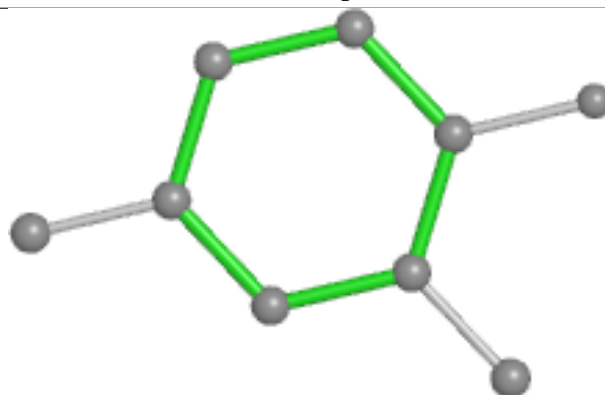
Bond lengths



Bond angles

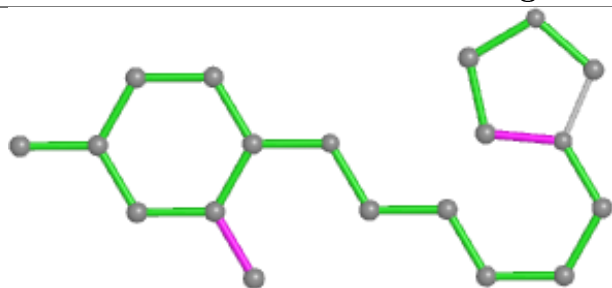


Torsions

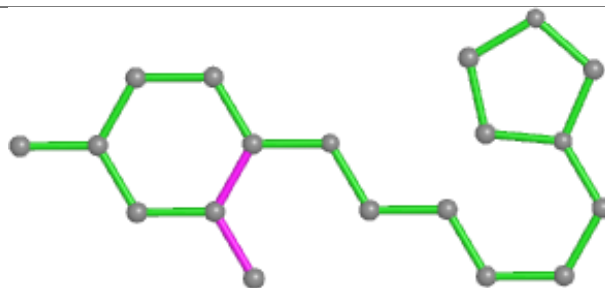


Rings

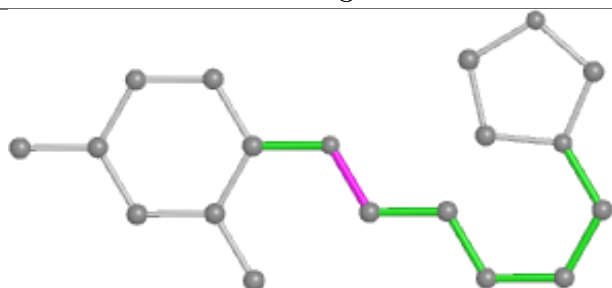
Ligand 5G8 B 602



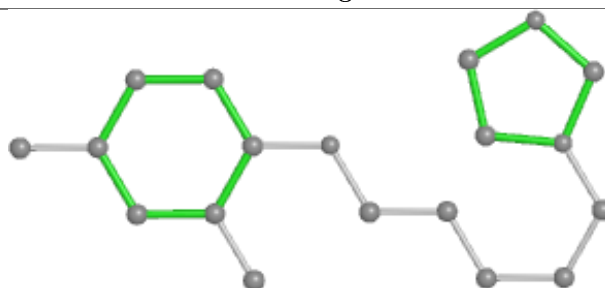
Bond lengths



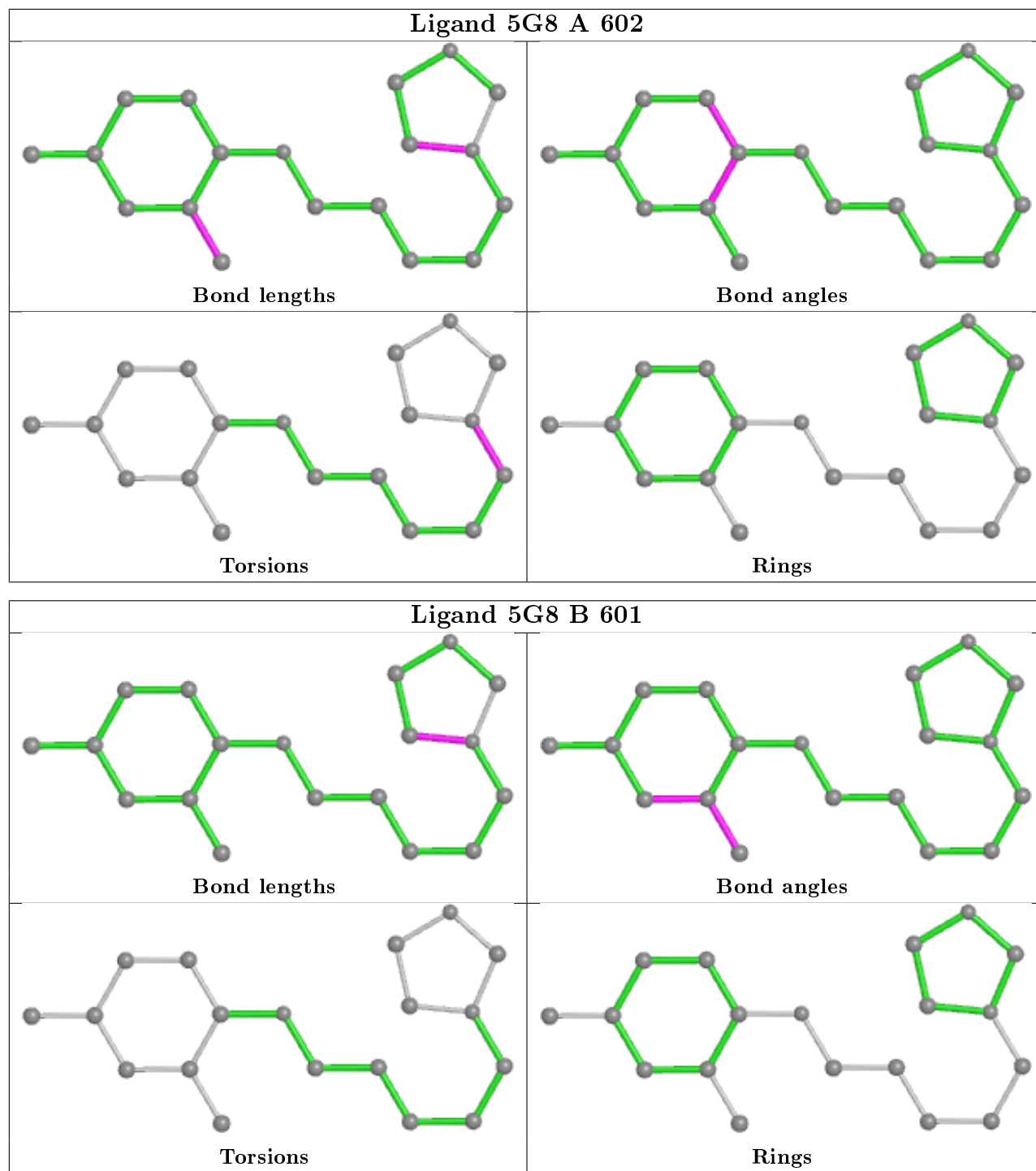
Bond angles



Torsions



Rings



5.7 Other polymers [i](#)

There are no such residues in this entry.

5.8 Polymer linkage issues [i](#)

There are no chain breaks in this entry.

6 Fit of model and data [i](#)

6.1 Protein, DNA and RNA chains [i](#)

In the following table, the column labelled ‘#RSRZ> 2’ contains the number (and percentage) of RSRZ outliers, followed by percent RSRZ outliers for the chain as percentile scores relative to all X-ray entries and entries of similar resolution. The OWAB column contains the minimum, median, 95th percentile and maximum values of the occupancy-weighted average B-factor per residue. The column labelled ‘Q< 0.9’ lists the number of (and percentage) of residues with an average occupancy less than 0.9.

Mol	Chain	Analysed	<RSRZ>	#RSRZ>2	OWAB(Å ²)	Q<0.9
1	A	536/545 (98%)	-0.24	9 (1%) 70 72	36, 53, 83, 135	1 (0%)
1	B	531/545 (97%)	-0.15	8 (1%) 73 76	38, 59, 92, 141	0
All	All	1067/1090 (97%)	-0.19	17 (1%) 72 74	36, 56, 89, 141	1 (0%)

All (17) RSRZ outliers are listed below:

Mol	Chain	Res	Type	RSRZ
1	A	539	LEU	5.0
1	B	541	SER	4.6
1	A	496	LYS	4.5
1	A	493	ARG	4.3
1	A	540	LEU	4.3
1	B	4	GLU	4.2
1	B	292	GLU	3.9
1	B	441	LEU	3.0
1	B	349	ASP	2.8
1	B	495	SER	2.7
1	A	497	SER	2.4
1	B	105	TYR	2.4
1	A	343	VAL	2.3
1	A	494	ASP	2.2
1	A	344	PRO	2.1
1	A	495	SER	2.1
1	B	348	LYS	2.0

6.2 Non-standard residues in protein, DNA, RNA chains [i](#)

In the following table, the Atoms column lists the number of modelled atoms in the group and the number defined in the chemical component dictionary. The B-factors column lists the minimum, median, 95th percentile and maximum values of B factors of atoms in the group. The column labelled ‘Q< 0.9’ lists the number of atoms with occupancy less than 0.9.

Mol	Type	Chain	Res	Atoms	RSCC	RSR	B-factors(\AA^2)	Q<0.9
1	MIS	A	203	13/14	0.98	0.22	33,48,55,61	0
1	MIS	B	203	13/14	0.99	0.21	38,50,57,57	0

6.3 Carbohydrates [i](#)

There are no carbohydrates in this entry.

6.4 Ligands [i](#)

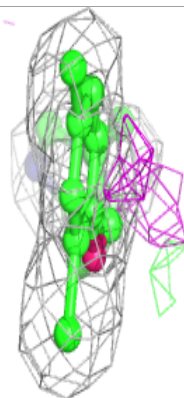
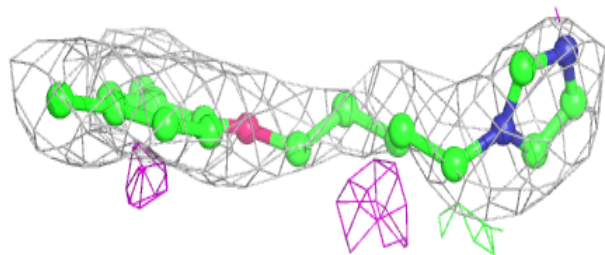
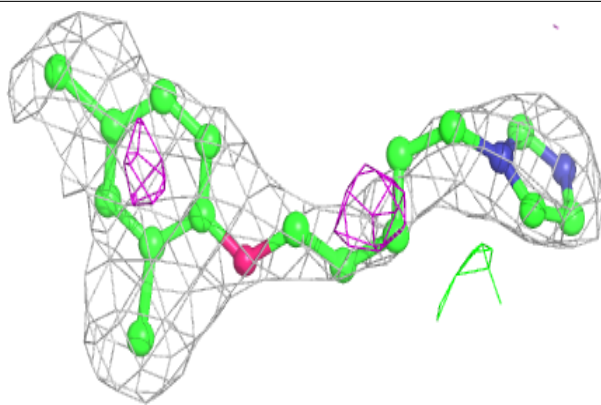
In the following table, the Atoms column lists the number of modelled atoms in the group and the number defined in the chemical component dictionary. The B-factors column lists the minimum, median, 95th percentile and maximum values of B factors of atoms in the group. The column labelled 'Q< 0.9' lists the number of atoms with occupancy less than 0.9.

Mol	Type	Chain	Res	Atoms	RSCC	RSR	B-factors(\AA^2)	Q<0.9
2	5G8	B	602	19/19	0.91	0.21	72,84,91,91	0
2	5G8	A	601	9/19	0.92	0.15	57,78,88,89	0
2	5G8	A	602	19/19	0.96	0.15	46,56,67,73	0
2	5G8	B	601	19/19	0.96	0.17	57,69,83,84	0

The following is a graphical depiction of the model fit to experimental electron density of all instances of the Ligand of Interest. In addition, ligands with molecular weight > 250 and outliers as shown on the geometry validation Tables will also be included. Each fit is shown from different orientation to approximate a three-dimensional view.

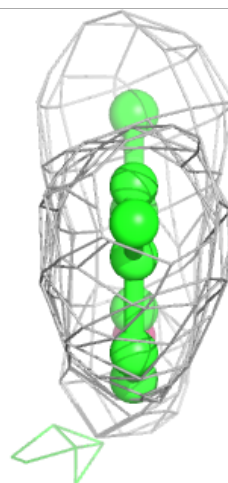
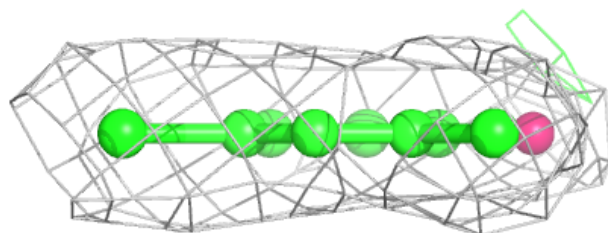
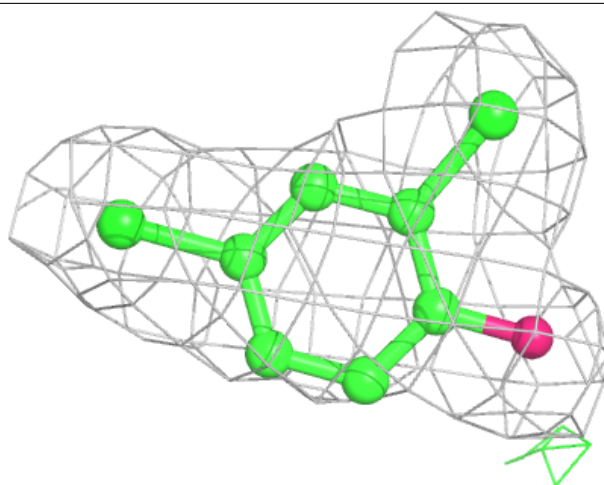
Electron density around 5G8 B 602:

$2mF_o - DF_c$ (at 0.7 rmsd) in gray
 $mF_o - DF_c$ (at 3 rmsd) in purple (negative)
and green (positive)



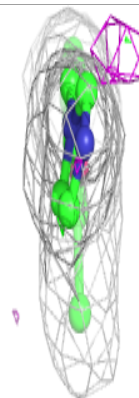
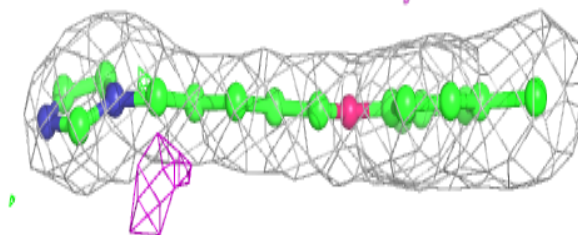
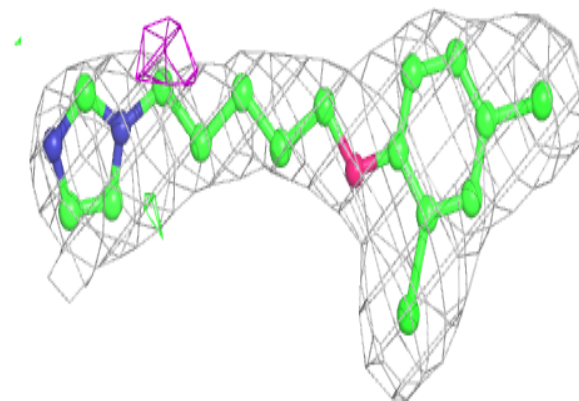
Electron density around 5G8 A 601:

$2mF_o-DF_c$ (at 0.7 rmsd) in gray
 mF_o-DF_c (at 3 rmsd) in purple (negative)
and green (positive)

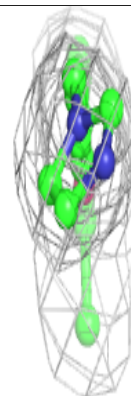
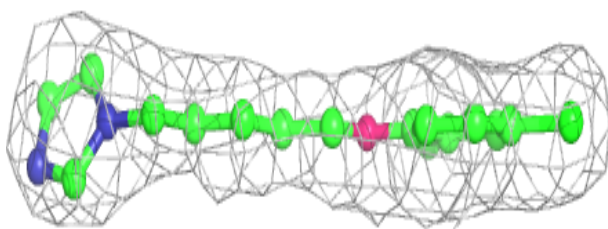
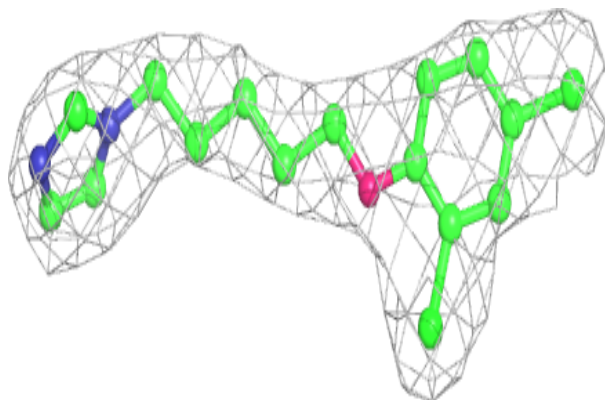


Electron density around 5G8 A 602:

$2mF_o-DF_c$ (at 0.7 rmsd) in gray
 mF_o-DF_c (at 3 rmsd) in purple (negative)
and green (positive)

**Electron density around 5G8 B 601:**

$2mF_o-DF_c$ (at 0.7 rmsd) in gray
 mF_o-DF_c (at 3 rmsd) in purple (negative)
and green (positive)



6.5 Other polymers [i](#)

There are no such residues in this entry.